

1 **Resting EEG spectral slopes are associated with age-related differences in information processing**

2 **speed**

3

4 Pathania, A.¹, Euler, M.J.², Clark, M.¹, Cowan, R.¹, Duff, K.³, & Lohse, K.R.^{1,4}

5

6 ¹Department of Health and Kinesiology, University of Utah

7 ²Department of Psychology, University of Utah

8 ³Department of Neurology, University of Utah

9 ⁴Program in Physical Therapy and Department of Neurology, Washington University School of Medicine

10 in Saint Louis

11

12 **Abstract**

13 **Background:** Previous research has shown the slope of the EEG power spectrum differentiates between
14 older and younger adults in various experimental cognitive tasks. Here, we extend that work, assessing
15 the relation between the EEG power spectrum and performance on the Repeatable Battery for the
16 Assessment of Neuropsychological Status (RBANS), a widely-used neuropsychological instrument that
17 assesses a broad range of cognitive domains.

18 **Methods:** Forty-four participants (21 younger adults, 23 older adults) completed the RBANS with EEG
19 data collected at-rest. Using spectral parameterization, we tested the mediating effect of the spectral
20 slope on age-related differences in subsequent cognitive task performance.

21 **Results:** Older adults performed reliably worse on the RBANS overall, and on the Attention and Delayed
22 Memory domains. However, evidence of mediation was only found for the Coding subtest, a measure of
23 information processing speed.

24 **Conclusions:** We found some evidence that the slope of the resting EEG power spectrum mediated age-
25 related differences in cognition. These effects were evident only in tasks requiring speeded processing,
26 whereas this effect was not statistically significant for delayed memory, even though age-related
27 differences were present.

28

29 **Resting EEG spectral slopes are associated with age-related differences in information processing**
30 **speed**

31 Aging is broadly associated with declines in cognitive and motor abilities. Although the average
32 pattern is for a decline in cognitive function with age, these changes are heterogeneous, such that
33 within “normal” aging, there are substantial individual differences in both average performance and
34 changes in performance over time (Habib et al., 2007). Some individuals experience declines so severe
35 that they exceed the range of healthy aging, leading to mild cognitive impairment (MCI) or even
36 dementia (Tucker-Drob, 2019). These declines can be attributed to numerous neurophysiological
37 changes over the lifespan (Bäckman et al., 2006; Cabeza et al., 2016; Hedden & Gabrieli, 2004).
38 Furthermore, these physical changes are broad and influence many different psychological processes,
39 such as executive functions (Buckner, 2004), affective regulation (Fiske et al., 2009), and memory
40 formation (Nyberg et al., 2012).

41 Although numerous studies have documented the wide range of individual differences in older
42 adults' cognitive function (Andrews et al., 2002; Dekhtyar et al., 2017; Lindenberger, 2014), the causes
43 of these declines are unclear. Indeed, it is likely that age-related declines are multi-causal (Harada et al.,
44 2013), further complicating the issue. Across different domains of cognition and changes in anatomical
45 structures, one unifying way of understanding this problem from a functional perspective is the *neural*
46 *noise hypothesis*. The neural noise hypothesis suggests that many (not all) age-related changes in
47 cognition might be explained by a reduction in the signal-to-noise ratio of neural circuits with increased
48 chronological age (Cremer & Zeef, 1987; Voytek & Knight, 2015; Waschke et al., 2017). Recently,
49 researchers have proposed that the slope of the EEG power spectrum may be a viable correlate of
50 neural noise.

51 **Characterizing the EEG Power Spectrum**

52 The slope of EEG power spectrum exhibits a pattern of $1/f$ noise, which is a common finding in
53 many biological, physical, and even social systems (He, 2014; Ward & Greenwood, 2007). We can think
54 of $1/f$ noise as a particular kind of pattern where low frequencies have the most power in the signal, and
55 power decreases at higher frequencies; that is, there is a negative relationship between power and
56 frequency, as is common in human EEG (Cohen, 2014), which follows the form:

57 (Eq. 1.) $P \sim \frac{k}{f^x}$,

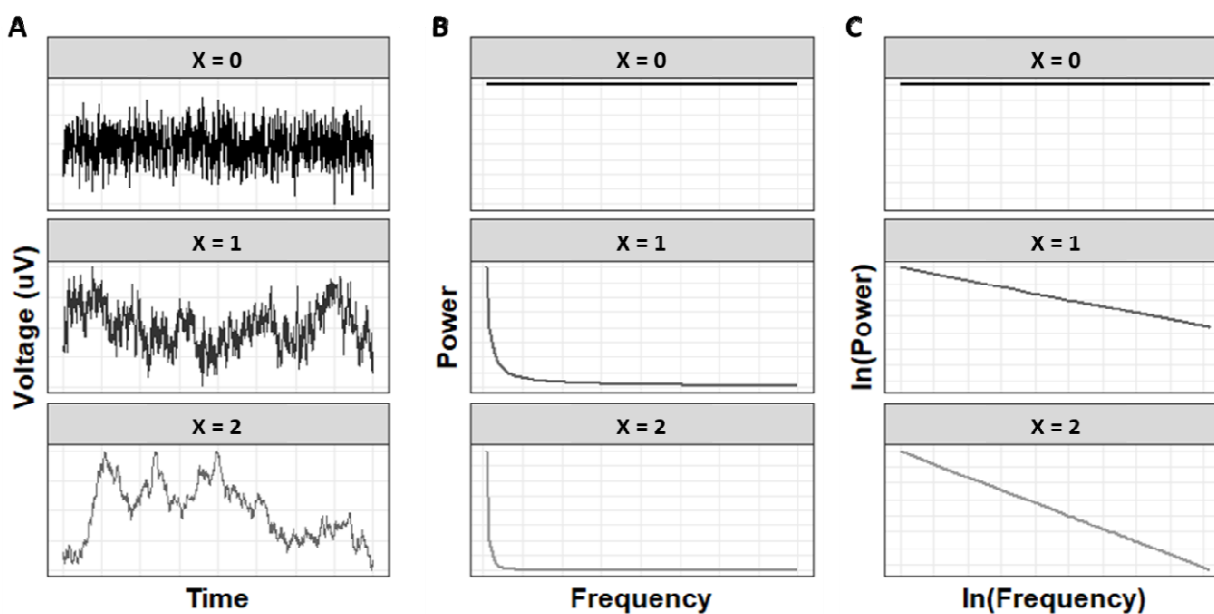
58 where the power in a signal (P) is inversely proportional to the frequency ($1/f$), with this
59 proportionality determined by a decay parameter (x), hereafter referred to as the exponent, and a
60 constant (k), hereafter referred to as the offset. When transformed into log-log space, this relationship
61 becomes a linear function:

62 (Eq. 2.) $\ln(P) = \ln(k) - x * \ln(f)$,

63 such that power in the signal monotonically decreases as the frequency increases, as shown in
64 Figure 1. That is, in the resulting linear function, the exponent is now the slope of the line relating power
65 to frequency. Many systems show this proportionality (with some relabeling of terms) from geology
66 (Holliger, 1996), to music (Voss & Clarke, 1975), to human cognition (Gilden et al., 1995; Wagenmakers
67 et al., 2004).

68 In the human EEG, a large proportion of the signal follows a broad-band $1/f$ pattern, with
69 deviations away from this pattern reflecting periodic activity in the canonical frequency bands (e.g.,
70 alpha, beta, delta). Whereas decades of research has demonstrated relations between various
71 oscillatory processes and specific psychological states or correlates, the psychological significance of the
72 aperiodic ($1/f$) component of the power spectrum has only recently become clear. Because the $1/f$
73 pattern is so prevalent across different types of systems, it was often regarded as a form of background
74 noise, with limited functional significance (see He, 2014 for a review). However, in the last several
75 decades, key studies have established a plausible physiological basis for the spectral slope (Freeman &

76 Zhai, 2009; He et al., 2010) and a growing number of functional correlates (Ouyang et al., 2020; Voytek
77 et al., 2015).



78
79 **Figure 1.** Three different time-series of hypothetical electrophysiological data. (A) Voltages are shown
80 over time. (B) Following a fast Fourier transform, an exponential function (—) is fit to the raw
81 power spectrum. (C) By log-transforming the Power and the Frequency of the power spectrum, we can
82 now approximate this relationship with a linear function (—). These
83 transformations are shown for three different cases where the value of the exponent changes from 0
84 (shown in black, representing “white” noise), to 1 (shown in dark grey, representing “pink” noise), to 2
85 (shown in light grey, representing Brownian or “red” noise).

86

87

88 Most recently, studies have provided evidence that the spectral slope reflects the balance of
89 excitation and inhibition (E:I) in the brain, such that flatter slopes indicate an increase in random
90 excitatory spiking, a potential source of noise in the signal (Gao et al., 2017). Although those findings,
91 and much of this literature, has involved invasive recordings from local field potentials or
92 electrocorticography, more recent research has extended this to scalp EEG, demonstrating that
93 anesthetic agents with known (and opposite) influences on excitation and inhibition modulate the
94 spectral slope in the expected direction (Waschke et al., 2021). Other aspects of the electrophysiological
95 power spectrum are increasingly understood as well, such as the relation of the spectral offset to
96 neuronal firing rates (Manning et al., 2009), and the relation of the characteristic bend in the slope (the
97 “knee” frequency) to the timescale of neural dynamics (Gao et al., 2020). This empirical work aligns with
98 simulation studies, which have shown that the slope and other spectral features can be well-modelled
99 as a function of local neuronal spikes and aggregate synaptic dynamics (Freeman & Zhai, 2009; Gao et
100 al., 2020; Miller et al., 2009). Altogether, recent basic science on the spectral slope provides a
101 compelling basis for considering it a viable index of neural noise (Tran et al., 2020).

102 **Functional and Age-Related Correlates of the Spectral Slope**

103 Simultaneous with these developments in understanding the mechanistic basis of the spectral
104 slope, many studies have identified important functional correlates. For instance, the spectral slope has
105 been observed to change across the lifespan (Dave et al., 2018; Donoghue et al., 2020; Schaworonkow &
106 Voytek, 2021; Tran et al., 2020; Voytek & Knight, 2015), across a variety of tasks (Ouyang et al., 2020;
107 Pathania et al., 2021; Voytek et al., 2015), across state-dependent variations in sleep (Freeman & Zhai,
108 2009; Leemburg et al., 2018; Miskovic et al., 2019), and during anesthesia (Gao et al., 2017; Waschke et
109 al., 2021). Furthermore, recent evidence points to the EEG spectral slope being a product of both fast
110 networks representing the local dynamics and slow networks representing the more distributed
111 recurrent connections. These two types of networks balance the excitation and inhibition to maximize

112 the information processing capabilities (Chaudhuri et al., 2018). Thus, the $1/f$ component of the power
113 spectrum is not only a slowly changing tonic signal, but an important physiological signal that can
114 change quite quickly given the demands of a task and the state of an individual.

115 With respect to aging specifically, several recent studies have shown flattening of the spectral
116 slope associated with differences in cognitive performance, or other aspects of brain functioning (Dave
117 et al., 2018; McNair et al., 2019; Tran et al., 2020; Waschke et al., 2017). Voytek and colleagues (2015)
118 conducted one of the first studies in this area, demonstrating that differences in the EEG spectral slope
119 at rest were not only related to age differences in working memory performance, but the slope
120 specifically *mediated* that effect. That is, older adults did not merely differ in both performance and
121 slope values from younger adults, but the behavioral differences could be accounted for statistically by
122 the slope effect alone. In the time since, many studies have replicated and expanded upon this basic
123 effect. For example, in the neural domain, flatter slopes in older adults have been related to reductions
124 in the amplitude of the N400 event-related potential (ERP) during language processing (Dave et al.,
125 2018), delayed auditory P2 ERP latencies during tone discrimination (McNair et al., 2019), and changes
126 in various measures of single-trial neural variability (Tran et al., 2020; Waschke et al., 2017).
127 Behaviorally, some of these and other studies have linked flatter slopes in older adults to poorer
128 performances on tasks of spatial attention (Tran et al., 2020) and visual-short-term memory (Thuwal et
129 al., 2021). Still other work has linked changes in the spectral offset to poorer cognitive control across the
130 adult age range (Clements et al., 2021), while spectral slope has been linked to speeded target detection
131 in adults aged 40 and below (Ouyang et al., 2020).

132 Overall, these studies demonstrate a consistent pattern of flatter slopes in older adults, which
133 are linked to changes in functioning across a variety of tasks, and in line with the neural noise
134 hypothesis. Notwithstanding this progress, there are several outstanding questions, which if addressed,
135 could further enhance understanding of the functional significance of the spectral slope. Largest among

136 these is the fact that, although the field as a whole has examined a range of tasks, to our knowledge, no
137 single study has examined correlates of the spectral slope across a broad range of cognitive domains.
138 This is important from the perspective of assessing the generality of spectral slope effects in aging, and
139 the degree to which it may be more sensitive to declines in some functions than others (Dave et al.,
140 2018, p. 40). In addition, prior studies that have examined cognitive correlates of the spectral slope have
141 thus far focused on experimental tasks, as opposed to standardized measures, such as those used in
142 neuropsychological assessment. Insofar as the spectral slope is of interest in terms of its translational
143 potential as biomarker of age-related decline, it is beneficial to examine the degree to which variation in
144 the slope relates to performance on tasks that have been validated for actual clinical decision-making.
145 Thus, in light of these considerations, the primary goal of this study was to replicate and expand upon
146 the prior findings relating flatter spectral slopes to cognitive performance declines in older adults, by
147 using a larger battery of clinically validated cognitive tests. Following from the initial study by Voytek et
148 al. (2015)—the only study to date which has demonstrated a mediating effect of the spectral slope—our
149 primary hypothesis was that the slope of the EEG power spectrum (collected at rest), would mediate
150 age-group differences in performance across diverse cognitive domains.

151

152

153 **Methods**

154 **Participants**

155 Forty-nine participants were recruited for the study: healthy young adults (YA; <35y; n=22);
156 cognitively healthy older adults (OA; >59y; n=24); and older adults with mild cognitive impairment (MCI;
157 n = 3) following approval of the University Institutional Review Board. We originally planned to recruit a
158 comparable sample of older adults with amnesic MCI, which is considered a prodrome of Alzheimer's
159 disease (Levey et al., 2006). This sample would allow for comparison of neurological changes between
160 neurologically healthy older adults and those with MCI. Due to the onset of COVID-19 during data
161 collection, however, we had to postpone data collection in older adults with MCI as a safety precaution.
162 As a result, the n=3 older adults with amnesic MCI are excluded from statistical analyses, and our focus
163 is solely on our primary aim comparing cognitively intact younger and older adults in the current sample.

164 Following informed consent, participants completed a demographic survey, wherein they self-
165 reported their education status, handedness, current medical status, and physical activity status. Older
166 adults also self-reported their concurrent medications and sleep quality using The Pittsburgh Sleep
167 Quality Index (PSQI), but these data were not obtained for younger adults.

168 Participants over 18 were recruited and did not have any impairments that would limit the
169 function of their arms, hand, or legs. Participants were recruited from the local community by flyers and
170 word of mouth recruitment. Older adults specifically were also recruited through a participant database
171 maintained by the Center on Aging at the University of Utah. Participants with MCI were recruited from
172 an ongoing study by one of the coauthors (KD), a licensed neuropsychologist, who also provided their
173 diagnosis for amnesic MCI. Participants were excluded if they had any self-reported musculoskeletal,
174 neurological, or perceptual impairments that they thought would affect their performance in these
175 tasks, or any history of skin allergies (as a precaution for EEG data collection). In addition, participants

176 were excluded if they had any medical history of severe cognitive impairment (e.g., dementia) or
177 psychiatric conditions (e.g., severe depression, bipolar disorder, substance abuse).

178 **Tasks and Measures**

179 Participants completed a battery of cognitive and motor tasks: the RBANS to assess cognition, a
180 maximum grip-force task, a simulated feeding task (Schaefer et al., 2015; Schaefer & Hengge, 2016), and
181 a sensorimotor test of standing balance. However, to address our primary aim the current study focuses
182 only on the resting EEG data and the behavioral data from the RBANS.

183 ***Cognitive Assessment***

184 **RBANS:** This individually-administered, paper and pencil battery has been validated to assess
185 cognitive function in adults ages 20-89 (Randolph et al., 1998). It is a reliable and valid assessment of
186 cognitive status for detecting dementia (Duff et al., 2008), discriminating among individual differences in
187 healthy older adults (England et al., 2014; Patton et al., 2003), and in similarly aged clinical populations
188 (Larson et al., 2005). Furthermore, there is good evidence of convergent validity to show that RBANS
189 scores are associated with instrumental activities of daily living (Freilich & Hyer, 2007; Larson et al.,
190 2005). The RBANS consists of 12 subtests that load onto 5 indices of various cognitive domains:
191 immediate memory, visuospatial/constructional ability, language, attention, and delayed memory. To
192 ensure consistency of scoring, all tests were scored by the same author, AP. Although age-corrected
193 normative data is available, we elected to use non-age-corrected raw scores so that we could compare
194 age-groups on their absolute performance (rather than performance relative to age-matched peers).

195 **EEG Processing and Aggregation**

196 Scalp EEG was collected from a 32-channel actiCAP active electrode system housed in a 64-
197 channel cap and amplified with a BrainAmp DC amplifier (BrainProducts GmbH). The resting EEG data
198 was collected for two minutes in each of two different conditions; eyes open and eyes closed. To reduce
199 the potential for artifacts and make the parameterization of the power spectrum easier, we a priori

200 chose to analyze only on data from eyes-closed rest. Participants were seated in each condition and
201 instructed to, “Clear their minds and relax”. In the eyes open condition, all participants were oriented
202 towards a fixation cross that was taped to a white wall approximately 2m away. The electrodes were
203 labelled in accordance with the standard 10-10 geodesic montage (Oostenveld & Praamstra, 2001). The
204 specific electrode sites included, Fp1, Fz, F3, F7, FT9, FC5, FC1, C3, T7, TP9, CP5, CP1, Pz, P3, P7, O1, Oz,
205 O2, P4, P8, TP10, CP6, CP2, Cz, C4, T8, FT10, FC6, FC2, F4, F8, and Fp2. The data were online referenced
206 to the right ear, with a common ground on the left ear. The electrode impedances were maintained
207 below 25k Ω , with a sampling frequency of 1000Hz.

208 EEG data processing was conducted with the BrainVision Analyzer 2.1.2 software (BrainProducts
209 GmbH). No online filters were applied, but offline the data were band-pass filtered between 0.1 and 40
210 Hz with 24-dB rolloffs with a 60 Hz notch filter. The data were manually inspected, and eyeblinks marked
211 for ICA-based ocular correction within BrainVision Analyzer software (BrainProducts 2013). This function
212 was run with the FP2 electrode serving as the VEOG and the HEOG electrode. Using Welch’s method,
213 the data were epoched in 1-s segments, which overlapped by 50%. Following that, segments with
214 artifacts were removed (average of 91% segments retained per person, SD = 6.73%). The remaining
215 segments were subjected to a fast Fourier transformation using 0.977 Hz bins and a Hamming window
216 with a 50% taper (Welch, 1967). The data were then truncated between 2-25 Hz to exclude gamma-
217 band power and higher frequency muscle activation and were then averaged within sets of electrodes to
218 get the average power spectrum in each region (Frontal: F7, F3, Fz, F4, F8; Central: C3, Cz, C4; Parietal:
219 P7, P3, Pz, P4, P8; and Occipital: O1, Oz, O2).

220 **Calculation of the Exponent and Offsets**

221 To compute the exponents and offsets for each participant, we used the spectral
222 parameterization algorithm (*specparam* toolbox), which decomposes the power spectral density into
223 the aperiodic background (exponent and offset) and the periodic peaks (Donoghue et al., 2020). The

224 code for this algorithm is available as an open source *specparam* toolbox (<https://fooof-tools.github.io/>).

225 The data were truncated to 2-25 Hz, and the *offsets* and *exponent* were extracted from the average

226 power spectrum in each brain region for each participant. To ensure consistency of data processing, the

227 EEG data was parametrized with the “*aperiodic_mode*” set at ‘fixed’, the width the peaks limited to 8,

228 and the minimum peak height set to 0.05. The choice of parameters led to a median $r^2 = 0.96$,

229 IQR=[0.92,0.98] across all regions. Thus, although other processing parameters could have been chosen,

230 we achieved good spectral parameterization across participants and regions.

231 **Statistical Analysis**

232 All statistical analyses were conducted in R v4.1.0 (R Core Team, 2021; R Studio Team, 2020;

233 Wickham et al., 2019). Following the extraction of the exponents and offsets, we used mixed-effects

234 regression (Bates et al., 2014), with fixed effects of age-group and brain region, and their interactions. A

235 random effect of Subject accounted for the within-subject nature of the Region factor.

236 To assess age-group differences in cognitive performance, we used independent samples t-tests

237 to compare performance on the raw RBANS scores between age groups. *A priori*, we chose to conduct

238 one-tailed tests as past data strongly suggest that older adults should generally score worse than

239 younger adults. We tested the effect of age-group for RBANS domain-composite scores, calculated from

240 the percentage of the maximum possible score on each subtest. Note that this is a departure from the

241 way RBANS scores are normally analyzed, which requires age-normalizing the scores. Because our

242 planned analyses require us to test the effect of age and then its (potential) mediation, we chose not to

243 age-normalize the RBANS scores. Thus, we focus on the full RBANS composite score (percentile scores

244 averaged across all domains) and domain composite scores (percentile scores combining subtests in

245 each domain).

246 Finally, we used mediation analysis with non-parametric bootstrapping to assess the mediating

247 effect of the exponent on age-related declines in cognition (Imai et al., 2010; Tingley et al., 2014). A

248 *priori*, we chose to focus on the exponents from the frontal electrodes only, reflecting our interest in
249 higher cognitive function. The exponents were extracted from the *specparam* toolbox (one frontal
250 exponent value for each participant) and then used as a mediator in a series of regression models.
251 Cognitive domain performance was regressed onto age-group, the exponent was regressed onto age
252 group, and cognitive test performance was regressed onto age-group and the exponent. Using k=5,000
253 iterations, these models were bootstrapped to estimate the total effect, the average direct effect, and
254 the average mediation effect.

255 To ensure reproducibility, de-identified EEG and behavioral data, plus all analysis code are
256 available from the corresponding author's GitHub account
257 (https://github.com/keithlohse/spectral_slopes_aging).

258

259 Results

260 Demographics

261 Forty-nine participants were recruited from within the university and the larger community.
262 However, due to a data storage issue, we lost EEG data for one YA participant, bringing our total YA
263 n=21, and one OA participant, bringing our total OA n=23. Demographic statistics for these participants
264 are shown in Table 1. Data from the n=3 older adults with MCI were too limited to include in statistical
265 analyses. All subsequent analyses are based on the N=44 cognitively intact older and younger adults.

266

267 **Table 1.** Summary statistics for the participant demographic surveys.

Variable	Younger Adults	Older Adults
Participants (n)	21	23
Age, mean (SD)	23.29(3.47)	70.83(5.77)
Age, range	19, 33	59, 83
Male (n)	11	4
Education level (years), mean (SD)	14.93 (1.58)	15.45(2.61)
# of Current Medications	<i>Not Collected</i>	1 to 23
No. of medications, mean (SD)	<i>Not Collected</i>	5.55(5.26)
Average Maximum Grip Force (kgf)	20.5 (6.5)	12.4 (4.2)
Self-Reported Physical Activity		
Vigorous PA (Days per week)	2.98(1.75)	2.22(2.33)
Vigorous PA (Hours per day)	1.21(0.64)	0.87(0.91)
Moderate PA (Days per week)	3.67(1.72)	4.15(2.52)
Moderate PA (Hours per day)	1.42(0.83)	1.51(1.22)
Light PA (Days per week)	5.76(2.12)	5.43(2.42)
Light PA (Hours per day)	3.74(3.15)	2.91(2.08)
Resistance training (Days per week)	2.52(2.09)	1.17(1.59)
Sleep Quality, mean (SD)	<i>Not Collected</i>	5.33(3.57)

268 Note that details of medications taken and the Pittsburgh Sleep Quality Index were only added to the
269 study protocol after data collection in the younger adults was finished. As such, these data are only
270 available for the older adults.

271 **Age-Related Differences in EEG Power Spectra**

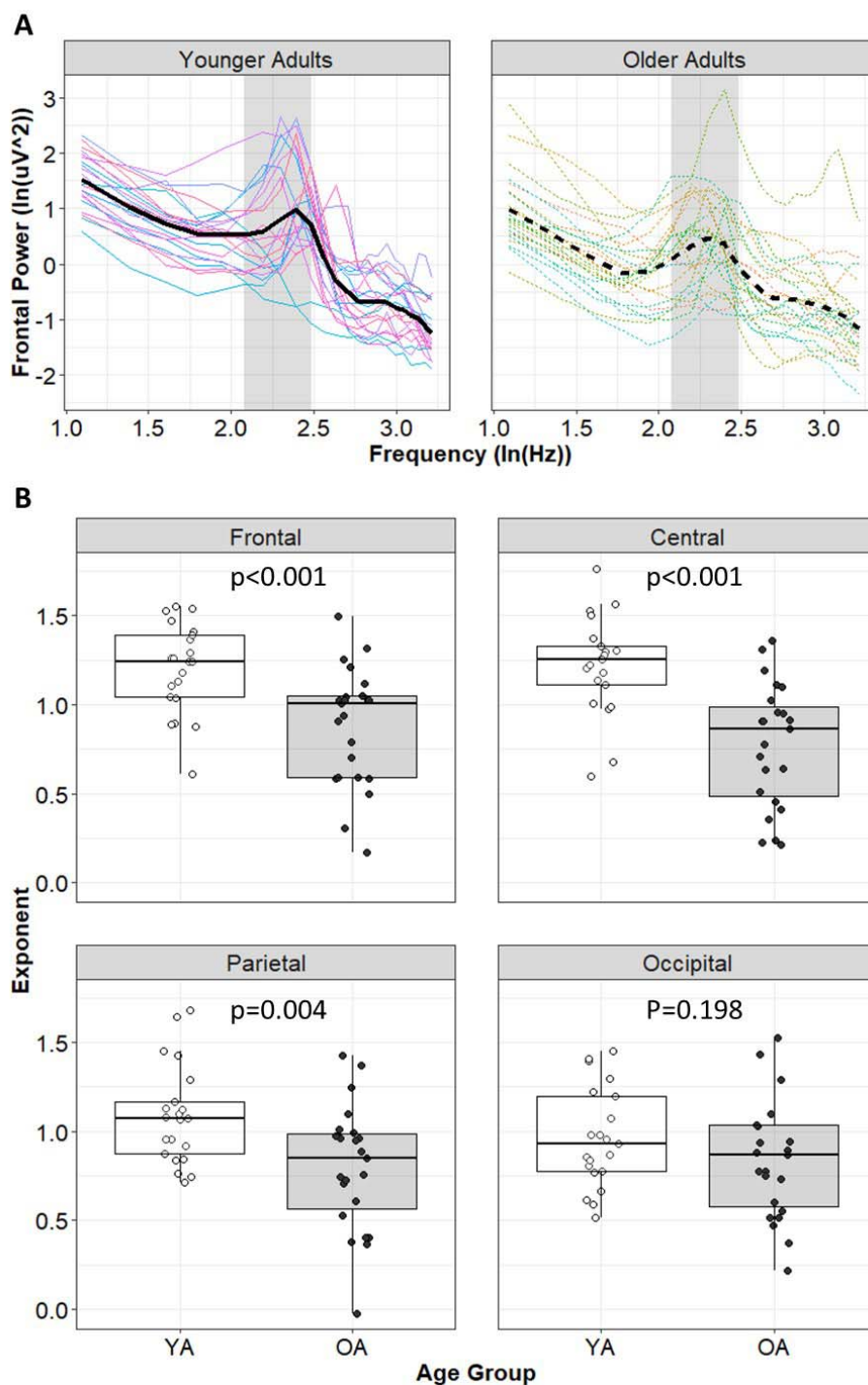
272 To measure age-related changes in the exponent in different brain regions, a linear mixed-effect
273 regression model with fixed effects of age-group and brain region, and their interactions revealed a
274 significant main effect of Age-Group ($F(1,44) = 12.56, p < 0.001$) and brain Region ($F(3,132) = 8.70, p <$
275 0.001). These effects were superseded by the Age-Group x Region interaction ($F(3,132) = 10.09, p <$
276 0.001). To decompose this interaction, we subset the data into regions, and performed linear
277 regressions with fixed-effects of Age-Group.

278 In the frontal region, there was a significant main effect of Age-Group, $F(1,42)=13.28, p <0.001$.
279 The exponents in the frontal region were lower in older adults (i.e., flatter power spectra) as compared
280 to the younger adults, see Figure 2B.

281 In the central region, there was a there was a significant main effect of Age-Group,
282 $F(1,42)=22.00, p <0.001$. The exponents in the central region were reliably lower in older adults as
283 compared to the younger adults, see Figure 2B.

284 In the parietal region, there was a there was a significant main effect of Age-Group,
285 $F(1,42)=9.24, p = 0.004$. The exponents in the parietal region were reliably lower in older adults as
286 compared to the younger adults. In the occipital region, however, no significant effect of Age-Group was
287 observed, $F(1,42) = 1.71, p = 0.198$. Both results are shown in Figure 2B

288



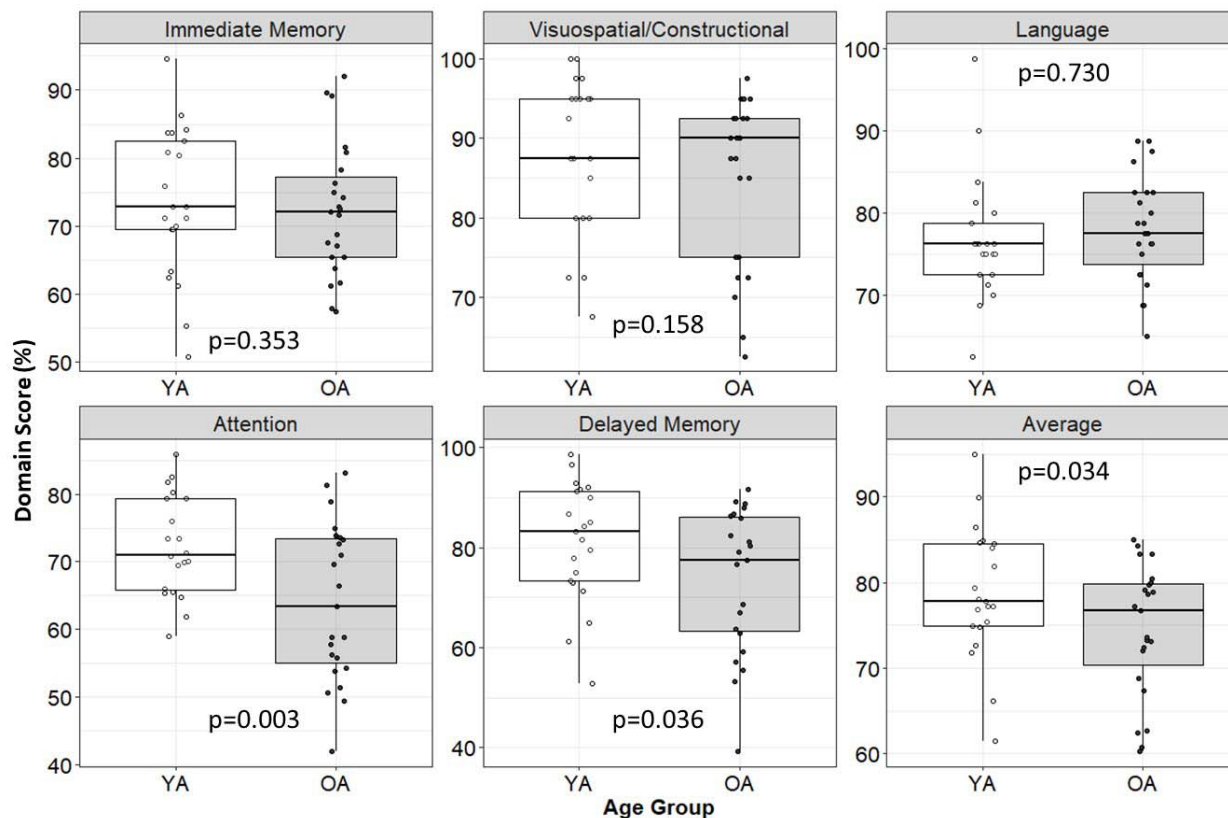
289

290 **Figure 2.** (A) Average power spectra across the frontal electrodes (F7, F3, Fz, F4, F8) as function of age-
291 age group, shown in log-log space. Thin colored lines show individuals, thicker black lines show the average
292 power spectra for the whole group (line dashing varies with group). (B) Estimated exponents from each
293 region as a function of age group. P-values are based on a linear model regressing exponents onto a
294 contrast coded age group variable in each region. YA = younger adults; OA = older adults. The canonical
295 alpha band (8-12 Hz) is highlighted in Panel A.
296

297 **Age-Related Differences in Cognition**

298 As shown in Figure 3, there was considerable variability both within and between groups on the
299 different scales of the RBANS. For the RBANS composite score, there was a statistically significant
300 difference between younger and older adults ($t(41.6) = -1.87, p=0.034$), with older adults performing
301 worse ($d=-0.40$). Delving into the specific cognitive domains of the RBANS, only Attention ($t(38.1) = -$
302 $2.86, p = 0.003, d=-0.61$) and Delayed Memory ($t(41.8) = -1.84, p=0.036, d=-0.39$) showed statistically
303 significant differences, whereas differences for Immediate Memory ($t(40.3)=-0.38, p = 0.353, d=-0.08$),
304 Visuospatial/Constructional ability ($t(42.0)=-1.01, p = 0.158, d=-0.21$), and Language ($t(39.7) = 0.62, p =$
305 $0.730, d=0.13$) were not statistically significant.

306



307

308 **Figure 3.** RBANS scores for each cognitive domain as a function of group: Immediate memory,
309 Visuospatial/ Constructional abilities, Language, Attention, and Delayed Memory. P-values are based on
310 directional Welch's Two Sample t-test (not assuming equal variances), where $H_0: OA \geq YA$. YA =
311 younger adults; OA = older adults.

312 **Does the spectral slope mediate age-related changes in cognition?**

313 Given our *a priori* predictions, exponents from the frontal region were tested as potential
314 mediators for age-group differences in the RBANS. As shown in Table 2, we tested only those RBANS
315 scales that showed statistically significant differences between age-groups. Contrary to our predictions,
316 neither total RBANS scores ($p=0.170$), the Delayed Memory domain ($p=0.183$), nor the Attention domain
317 ($p=0.259$) showed a statistically significant mediation effect. See Figure 4A-C.

318 In an earlier version of these analyses published in a pre-print (Pathania, Clark, et al., 2021), we
319 did find evidence of statistically significant mediations. However, those analyses used regression-based
320 methods to estimate the slope of power spectrum (rather than spectral parameterization) and analyzed
321 the RBANS at the level of specific subtests rather than scales. To better understand these discrepant

322 results, we focused on the Attention scale, which showed the largest age-related differences, and ran
323 mediation analyses on its constituent subtests: the Coding test and the Digit Span test (see Figure 4D
324 and E). As shown in Table 2, there was evidence of mediation for the Coding subtest ($p=0.034$), but not
325 for the Digit Span subtest ($p=0.800$). Thus, across our pre-print and the current analysis, there was
326 evidence that the exponent of the frontal power spectrum mediated age-related differences in the
327 coding subscale. This suggests that the mediation is not an artifact of the method of estimation
328 (regression in the pre-print, spectral parameterization here) and is instead something unique about the
329 Coding subtest that is not shared with the Digit Span.

330

331

332 **Table 2.** Testing the exponent of the power spectrum as a mediator of age-related differences using
333 non-parametric bootstrapping to estimate mediation effects.

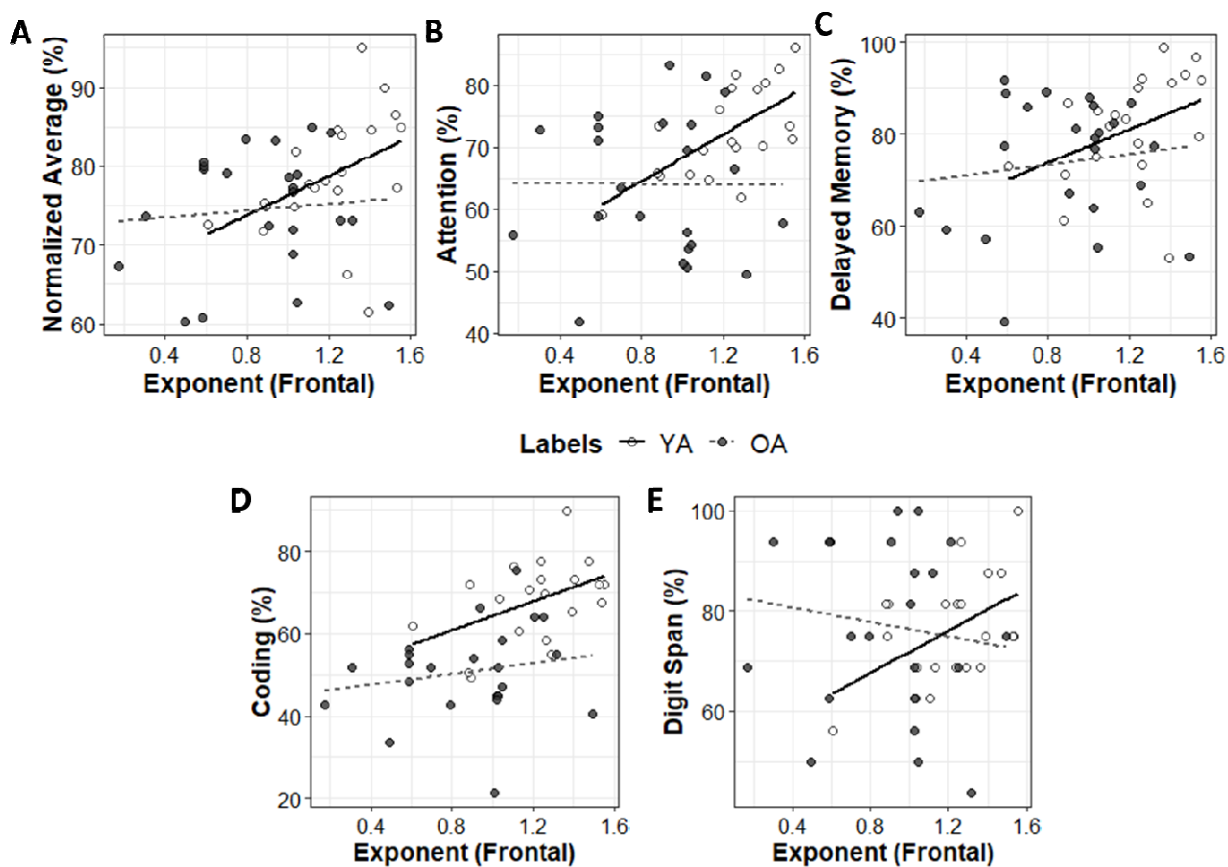
Dependent Variable	Total Effect		Direct Effect		Average Mediation Effect	
	Estimate	p-value	Estimate	p-value	Estimate	p-value
Average (%)	4.34	0.050	2.50	0.340	1.84	0.170
Delayed Memory (%)	7.29	0.057	4.04	0.378	3.25	0.183
Attention (%)	8.36	0.003	6.29	0.070	2.06	0.259
-- Coding Subtest (%)	17.32	<0.001	13.92	<0.001	3.40	0.034
-- Digit Span Subtest (%)	-0.61	0.860	-1.34	0.800	0.73	0.800

334 *Note that the total effect reflects the effect of both the grouping variable (Age Group) and the
335 mediator (spectral power Exponent) on the outcome (domains of cognition). The direct effect is the
336 effect of the group variable with the mediator removed, and the mediation effect is a statistical test of
337 the exponent as a mediator.

338

339

340



341

342 **Figure 4.** RBANS total (A), Attention domain (B), Delayed Memory domain (C), Coding subtest (D), and
343 Digit Span subtest (E) scores as a function of the spectral slope across the frontal electrodes. These
344 subtests were selected for the statistically significant differences between younger (YA) and older adults
345 (OA) shown in Figure 3. Lines indicate the ordinary least squares regression line within each group.
346

347 **Discussion**

348 Consistent with the neural-noise hypothesis of aging, our data showed that (1) the slope of the
349 resting EEG power spectrum is flatter in older compared to younger adults (replicating past work) and
350 (2) individual differences in the slope of the EEG power spectrum mediated age-related differences in a
351 clinically validated assessment of information processing speed (extending past work). However, it is
352 important to note that this pattern was not evident across the five different domains of the RBANS.
353 Contrary to our predictions, none of the RBANS domains showed a reliable mediation effect. Since the
354 Attention domain showed the largest age-related differences, we performed mediation analysis with its
355 constituent subscales, Coding and Digit Span. The effect was apparent only in the Coding subtest. Other
356 domains/subtests of the RBANS were not examined, as we did not find reliable evidence of cognitive
357 differences between the performance of younger adults and older adults. Thus, combining the current
358 data with past work, it appears that the flattening of the exponent with age is a reliable effect (Tran et
359 al., 2020; Voytek et al., 2015; Waschke et al., 2017). Further, the exponent is related to cognition not
360 only in tightly controlled laboratory tasks (Thuwal et al., 2021, Tran et al., 2020; Voytek et al., 2015), but
361 also in validated clinical tests (the Coding subtest of the RBANS in the present data).

362 The obtained pattern of results raises important questions about how the findings pertaining to
363 Coding subtest of the RBANS should be interpreted. The Coding subtest falls under the “Attention”
364 domain. Interestingly, the Digit Span is the other subtest in the Attention domain, and we found no
365 evidence of a mediation effect with respect to Digit Span scores. Ultimately, the reason for the strong
366 association with the Coding subtest is not clear, but we posit a few possible (non-exclusive)
367 explanations. First, the Coding subtest has the strictest time requirements of any subtest on the RBANS,
368 and is directly analogous to other symbol substitution tasks that are commonly used to assess
369 processing speed in neuropsychology (Larrabee, 2017). To perform the task efficiently, participants need
370 to memorize the correspondence between symbols presented on the paper and the numbers those

371 symbols represent (i.e., a symbol-number pairing). As the task goes on, more efficient participants are
372 able to encode the symbol-number pairings into working memory, as opposed to repeatedly alternating
373 between the symbol key and the response field. Thus, these tasks require the rapid integration of
374 various sub-processes, including visual scanning, working memory, sustained attention, and visuomotor
375 coordination, and consequently quantify an individual's ability to rapidly learn, coordinate, and execute
376 a set of simpler sub-tasks (Lezak et al., 2004).

377 A second, perhaps complementary, perspective on these measures highlights the importance of
378 executive functions, via cognitive control and working memory, in allowing individuals to rapidly
379 coordinate the necessary sub-processes when faced with a novel task and timed testing conditions
380 (Koziol & Budding, 2009). Both of these perspectives are consistent with the large literatures that
381 highlight: (1) the relative prominence of changes in the (interrelated) functions of processing speed,
382 working memory, and fluid cognition with greater age (Salthouse & Davis, 2006), and (2) the effects of
383 clinical conditions affecting distributed processing and/or white matter integrity on timed symbol-
384 substitution tasks (e.g., DeLuca et al., 2004; Kinnunen et al., 2011; Lezak et al., 2004).

385 Interestingly, we did not find evidence for the exponent mediating age-related differences in
386 delayed memory. From these pilot data, we cannot conclude that there is no relationship between
387 exponents and delayed memory, but we found no evidence for a mediating effect in the current sample.
388 There are several reasons why there might be no evidence of mediation in delayed memory despite a
389 relatively large age-related difference. It could be that there truly is no mediating effect in delayed
390 memory in the population or it could be that there is an effect but we lacked the power to detect it. This
391 second option is an important consideration because in the present sample the Attention domain
392 showed the largest age-related differences. If differences in other domains were larger (i.e., between
393 group variance increased or within group variation reduced) that would increase the power to detect a

394 mediation if one exists in that domain. At present, however, we only find evidence of a mediation effect
395 for the Coding subtest, which leans most heavily on speeded information processing.

396 Finally, it is unfortunate that we were unable to collect data from our sample of older adults
397 with MCI. The descriptive data for three participants are interesting, but far too limited to allow a
398 substantial qualitative interpretation. Based on the relationship between resting EEG exponents and
399 performance in cognitively intact older adults, however, we do think that these pilot data warrant
400 further research into the clinical utility of the resting spectral slope as a biomarker of cognitive decline.
401 We have shown that resting EEG exponents are sensitive to individual differences in some aspects of
402 cognition. Combined with past work showing how frequency-based EEG measures can longitudinally
403 predict the conversion from MCI to Alzheimer's disease (Engedal et al., 2020; Poil et al., 2013), we think
404 the present data warrant longitudinal studies to see if the EEG exponents possibly outperform other
405 biomarkers, or if the predictive utility of other biomarkers is improved after accounting for the EEG
406 exponent/offset (Donoghue et al., 2020).

407

408 **Limitations**

409 There are a number of limitations in the present study of which we need to be cognizant. First
410 and foremost, we have a limited sample size and we need to be careful in the interpretation of our
411 hypothesis test results. Due to relatively low power in some analyses, significant results may not be
412 representative of the real underlying effects, and non-significant results may have simply lacked
413 adequate statistical power (Button et al., 2013; Lohse et al., 2016). Finally, although the RBANS does tap
414 multiple cognitive domains, it does not have pure measures of executive functioning. Given the present
415 results, future studies might examine if executive function specifically is influenced by age and spectral
416 slope.

417

418 **Conclusions**

419 Consistent with the neural-noise hypothesis of aging, we replicated earlier work showing that
420 the resting EEG exponents become flatter with age and that individual differences in the exponents
421 explain individual differences in cognition. We also extend this past work by demonstrating these effects
422 in clinically validated assessments of cognitive status. However, the mediation effect was only present in
423 a test of information processing speed, suggesting that these effects are not broadly applicable to all
424 areas of cognition.

References

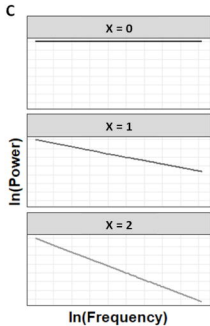
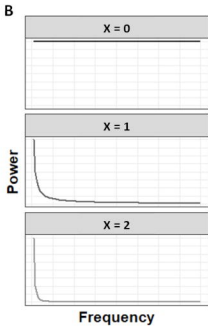
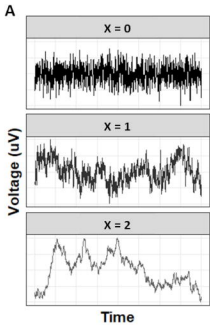
- Andrews, G., Clark, M., & Luszcz, M. (2002). Successful Aging in the Australian Longitudinal Study of Aging: Applying the MacArthur Model Cross-Nationally. *Journal of Social Issues, 58*(4), 749–765. <https://doi.org/10.1111/1540-4560.00288>
- Bäckman, L., Nyberg, L., Lindenberger, U., Li, S.-C., & Farde, L. (2006). The correlative triad among aging, dopamine, and cognition: Current status and future prospects. *Neuroscience & Biobehavioral Reviews, 30*(6), 791–807. <https://doi.org/10.1016/j.neubiorev.2006.06.005>
- Bates, D., Mächler, M., Bolker, B., & Walker, S. (2014). Fitting Linear Mixed-Effects Models using lme4. *ArXiv:1406.5823 [Stat]*. <http://arxiv.org/abs/1406.5823>
- Buckner, R. L. (2004). Memory and Executive Function in Aging and AD: Multiple Factors that Cause Decline and Reserve Factors that Compensate. *Neuron, 44*(1), 195–208. <https://doi.org/10.1016/j.neuron.2004.09.006>
- Button, K. S., Ioannidis, J. P. A., Mokrysz, C., Nosek, B. A., Flint, J., Robinson, E. S. J., & Munafò, M. R. (2013). Power failure: Why small sample size undermines the reliability of neuroscience. *Nature Reviews Neuroscience, 14*(5), 365–376. <https://doi.org/10.1038/nrn3475>
- Cabeza, R., Nyberg, L., & Park, D. C. (2016). *Cognitive Neuroscience of Aging: Linking Cognitive and Cerebral Aging*. Oxford University Press.
- Chaudhuri, R., He, B. J., & Wang, X.-J. (2018). Random Recurrent Networks Near Criticality Capture the Broadband Power Distribution of Human ECoG Dynamics. *Cerebral Cortex (New York, N.Y.: 1991), 28*(10), 3610–3622. <https://doi.org/10.1093/cercor/bhx233>
- Clements, G. M., Bowie, D. C., Gyurkovics, M., Low, K. A., Fabiani, M., & Gratton, G. (2021). Spontaneous alpha and theta oscillations are related to complementary aspects of cognitive control in younger and older adults. *Frontiers in Human Neuroscience, 15*, 106.
- Cohen, M. X. (2014). Fluctuations in Oscillation Frequency Control Spike Timing and Coordinate Neural Networks. *Journal of Neuroscience, 34*(27), 8988–8998. <https://doi.org/10.1523/JNEUROSCI.0261-14.2014>
- Cremer, R., & Zeef, E. J. (1987). What Kind of Noise Increases With Age? *Journal of Gerontology, 42*(5), 515–518. <https://doi.org/10.1093/geronj/42.5.515>
- Dave, S., Brothers, T. A., & Swaab, T. Y. (2018). 1/f neural noise and electrophysiological indices of contextual prediction in aging. *Brain Research, 1691*, 34–43. <https://doi.org/10.1016/j.brainres.2018.04.007>
- Dekhtyar, M., Papp, K. V., Buckley, R., Jacobs, H. I. L., Schultz, A. P., Johnson, K. A., Sperling, R. A., & Rentz, D. M. (2017). Neuroimaging markers associated with maintenance of optimal memory performance in late-life. *Neuropsychologia, 100*, 164–170. <https://doi.org/10.1016/j.neuropsychologia.2017.04.037>
- DeLuca, J., Chelune, G. J., Tulskey, D. S., Lengenfelder, J., & Chiaravalloti, N. D. (2004). Is Speed of Processing or Working Memory the Primary Information Processing Deficit in Multiple Sclerosis? *Journal of Clinical and Experimental Neuropsychology, 26*(4), 550–562. <https://doi.org/10.1080/13803390490496641>

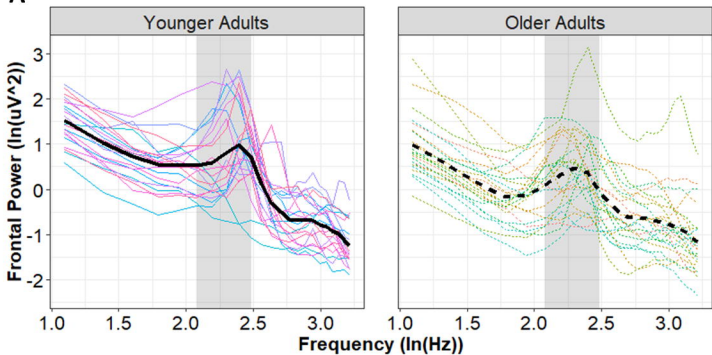
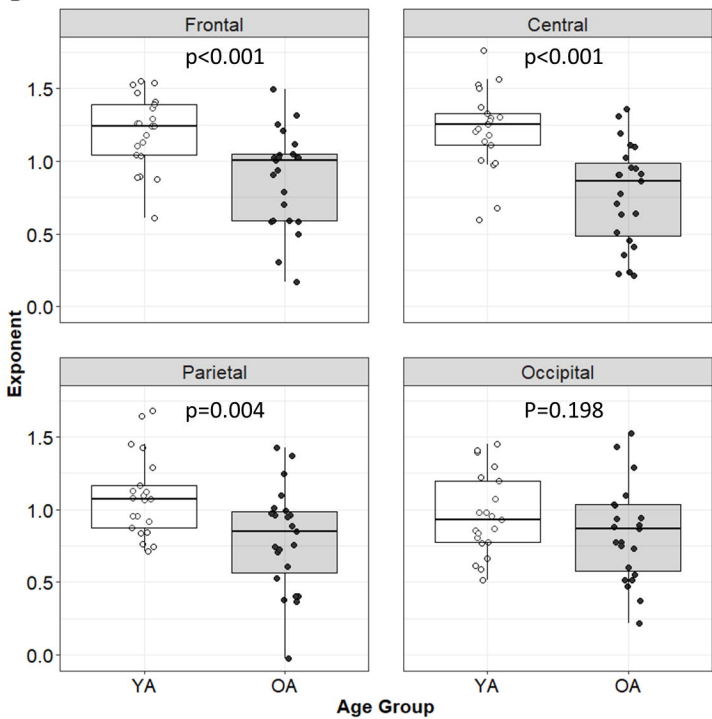
- Donoghue, T., Haller, M., Peterson, E. J., Varma, P., Sebastian, P., Gao, R., Noto, T., Lara, A. H., Wallis, J. D., Knight, R. T., Shestyuk, A., & Voytek, B. (2020). Parameterizing neural power spectra into periodic and aperiodic components. *Nature Neuroscience*, *23*(12), 1655–1665. <https://doi.org/10.1038/s41593-020-00744-x>
- Duff, K., Clark, H. J. D., O’Bryant, S. E., Mold, J. W., Schiffer, R. B., & Sutker, P. B. (2008). Utility of the RBANS in detecting cognitive impairment associated with Alzheimer’s disease: Sensitivity, specificity, and positive and negative predictive powers. *Archives of Clinical Neuropsychology*, *23*(5), 603–612. <https://doi.org/10.1016/j.acn.2008.06.004>
- Engedal, K., Barca, M. L., Høgh, P., Bo Andersen, B., Winther Dombernowsky, N., Naik, M., Gudmundsson, T. E., Øksengaard, A.-R., Wahlund, L.-O., & Snaedal, J. (2020). The Power of EEG to Predict Conversion from Mild Cognitive Impairment and Subjective Cognitive Decline to Dementia. *Dementia and Geriatric Cognitive Disorders*, *49*(1), 38–47. <https://doi.org/10.1159/000508392>
- England, H. B., Gillis, M. M., & Hampstead, B. M. (2014). RBANS Memory Indices Are Related to Medial Temporal Lobe Volumetrics in Healthy Older Adults and Those with Mild Cognitive Impairment. *Archives of Clinical Neuropsychology*, *29*(4), 322–328. <https://doi.org/10.1093/arclin/acu012>
- Fiske, A., Wetherell, J. L., & Gatz, M. (2009). Depression in Older Adults. *Annual Review of Clinical Psychology*, *5*(1), 363–389. <https://doi.org/10.1146/annurev.clinpsy.032408.153621>
- Freeman, W. J., & Zhai, J. (2009). Simulated power spectral density (PSD) of background electrocorticogram (ECoG). *Cognitive Neurodynamics*, *3*(1), 97–103. <https://doi.org/10.1007/s11571-008-9064-y>
- Freilich, B. M., & Hyer, L. A. (2007). Relation of the Repeatable Battery for Assessment of Neuropsychological Status to Measures of Daily Functioning in Dementia. *Psychological Reports*, *101*(1), 119–129. <https://doi.org/10.2466/pr0.101.1.119-129>
- Gao, R., Peterson, E. J., & Voytek, B. (2017). Inferring synaptic excitation/inhibition balance from field potentials. *NeuroImage*, *158*, 70–78. <https://doi.org/10.1016/j.neuroimage.2017.06.078>
- Gao, R., van den Brink, R. L., Pfeffer, T., & Voytek, B. (2020). Neuronal timescales are functionally dynamic and shaped by cortical microarchitecture. *Elife*, *9*, e61277.
- Gilden, D. L., Thornton, T., & Mallon, M. W. (1995). 1/f noise in human cognition. *Science*, *267*(5205), 1837–1839. <https://doi.org/10.1126/science.7892611>
- Habib, R., Nyberg, L., & Nilsson, L.-G. (2007). Cognitive and Non-Cognitive Factors Contributing to the Longitudinal Identification of Successful Older Adults in the Betula Study. *Aging, Neuropsychology, and Cognition*, *14*(3), 257–273. <https://doi.org/10.1080/13825580600582412>
- Harada, C. N., Natelson Love, M. C., & Triebel, K. (2013). Normal Cognitive Aging. *Clinics in Geriatric Medicine*, *29*(4), 737–752. <https://doi.org/10.1016/j.cger.2013.07.002>
- He, B. J. (2014). Scale-free brain activity: Past, present, and future. *Trends in Cognitive Sciences*, *18*(9), 480–487. <https://doi.org/10.1016/j.tics.2014.04.003>

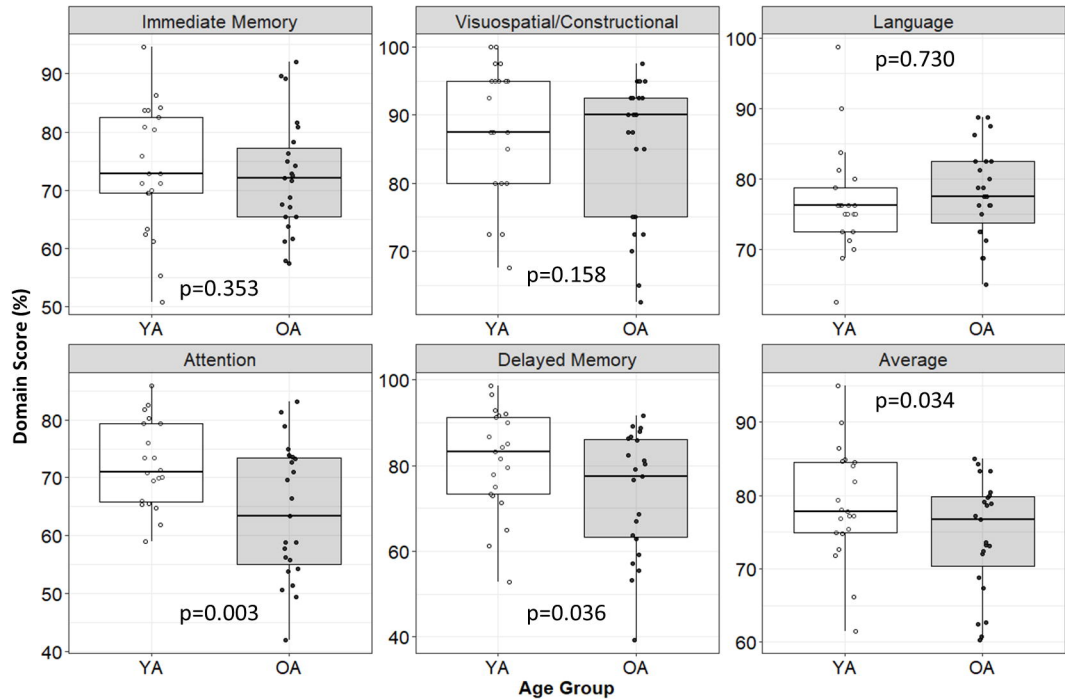
- He, B. J., Zempel, J. M., Snyder, A. Z., & Raichle, M. E. (2010). The Temporal Structures and Functional Significance of Scale-free Brain Activity. *Neuron*, *66*(3), 353–369. <https://doi.org/10.1016/j.neuron.2010.04.020>
- Hedden, T., & Gabrieli, J. D. E. (2004). Insights into the ageing mind: A view from cognitive neuroscience. *Nature Reviews Neuroscience*, *5*(2), 87–96. <https://doi.org/10.1038/nrn1323>
- Hickmott, P., & Dinse, H. (2013). Effects of Aging on Properties of the Local Circuit in Rat Primary Somatosensory Cortex (S1) In Vitro. *Cerebral Cortex*, *23*(10), 2500–2513. <https://doi.org/10.1093/cercor/bhs248>
- Holliger, K. (1996). Fault scaling and 1/f noise scaling of seismic velocity fluctuations in the upper crystalline crust. *Geology*, *24*(12), 1103–1106. [https://doi.org/10.1130/0091-7613\(1996\)024<1103:FSAFNS>2.3.CO;2](https://doi.org/10.1130/0091-7613(1996)024<1103:FSAFNS>2.3.CO;2)
- Imai, K., Keele, L., & Tingley, D. (2010). A general approach to causal mediation analysis. *Psychological Methods*, *15*(4), 309–334. <https://doi.org/10.1037/a0020761>
- Kinnunen, K. M., Greenwood, R., Powell, J. H., Leech, R., Hawkins, P. C., Bonnelle, V., Patel, M. C., Counsell, S. J., & Sharp, D. J. (2011). White matter damage and cognitive impairment after traumatic brain injury. *Brain*, *134*(2), 449–463. <https://doi.org/10.1093/brain/awq347>
- Koziol, L. F., & Budding, D. E. (2009). *Subcortical Structures and Cognition: Implications for Neuropsychological Assessment*. Springer Science & Business Media.
- Larrabee, G. J. (2017). Psychometric Foundations of Neuropsychological Assessment. In *Textbook of Clinical Neuropsychology* (2nd ed.). Taylor & Francis.
- Larson, E. B., Kirschner, K., Bode, R., Heinemann, A., & Goodman, R. (2005). Construct and Predictive Validity of the Repeatable Battery for the Assessment of Neuropsychological Status in the Evaluation of Stroke Patients. *Journal of Clinical and Experimental Neuropsychology*, *27*(1), 16–32. <https://doi.org/10.1080/138033990513564>
- Leemburg, S., Gao, B., Cam, E., Sarnthein, J., & Bassetti, C. L. (2018). Power spectrum slope is related to motor function after focal cerebral ischemia in the rat. *Sleep*, *41*(zsy132). <https://doi.org/10.1093/sleep/zsy132>
- Lezak, P. of N. P. and N. M. D., Lezak, M. D., Howieson, A. P. of N. and P. D. B., Howieson, D. B., Loring, P. of N. D. W., Loring, D. W., & Fischer, J. S. (2004). *Neuropsychological Assessment*. Oxford University Press.
- Lindenberger, U. (2014). Human cognitive aging: Corriger la fortune? *Science*, *346*(6209), 572–578. <https://doi.org/10.1126/science.1254403>
- Lohse, K., Buchanan, T., & Miller, M. (2016). Underpowered and Overworked: Problems With Data Analysis in Motor Learning Studies. *Journal of Motor Learning and Development*, *4*(1), 37–58. <https://doi.org/10.1123/jmld.2015-0010>
- Manning, J. R., Jacobs, J., Fried, I., & Kahana, M. J. (2009). Broadband Shifts in Local Field Potential Power Spectra Are Correlated with Single-Neuron Spiking in Humans. *Journal of Neuroscience*, *29*(43), 13613–13620. <https://doi.org/10.1523/JNEUROSCI.2041-09.2009>
- McNair, S. W., Kayser, S. J., & Kayser, C. (2019). Consistent pre-stimulus influences on auditory perception across the lifespan. *NeuroImage*, *186*, 22–32. <https://doi.org/10.1016/j.neuroimage.2018.10.085>

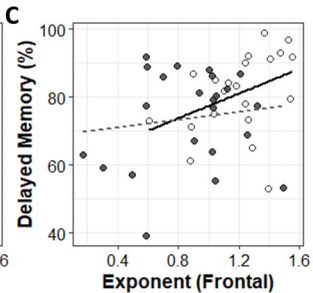
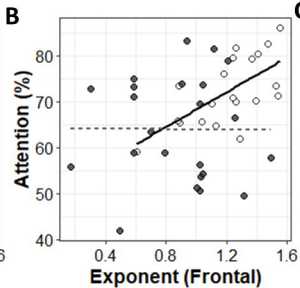
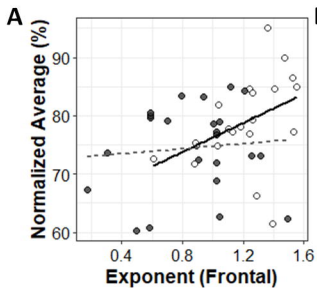
- Miller, K. J., Sorensen, L. B., Ojemann, J. G., & Nijs, M. den. (2009). Power-Law Scaling in the Brain Surface Electric Potential. *PLOS Computational Biology*, 5(12), e1000609. <https://doi.org/10.1371/journal.pcbi.1000609>
- Miskovic, V., MacDonald, K. J., Rhodes, L. J., & Cote, K. A. (2019). Changes in EEG multiscale entropy and power-law frequency scaling during the human sleep cycle. *Human Brain Mapping*, 40(2), 538–551. <https://doi.org/10.1002/hbm.24393>
- Nyberg, L., Lövdén, M., Riklund, K., Lindenberger, U., & Bäckman, L. (2012). Memory aging and brain maintenance. *Trends in Cognitive Sciences*, 16(5), 292–305. <https://doi.org/10.1016/j.tics.2012.04.005>
- Oostenveld, R., & Praamstra, P. (2001). The five percent electrode system for high-resolution EEG and ERP measurements. *Clinical Neurophysiology*, 112(4), 713–719.
- Ouyang, G., Hildebrandt, A., Schmitz, F., & Hermann (2020). Decomposing alpha and 1/f brain activities reveals their differential associations with cognitive processing speed. *NeuroImage*, 205, 116304.
- Pathania, A., Clark, M., Cowan, R., Euler, M., Duff, K., & Lohse, K. R. (2021). Relating resting EEG power spectra to age-related differences in cognitive performance: An observational pilot study. *MedRxiv*, 2021.02.12.21251655. <https://doi.org/10.1101/2021.02.12.21251655>
- Pathania, A., Schreiber, M., Miller, M. W., Euler, M. J., & Lohse, K. R. (2021). Exploring the reliability and sensitivity of the EEG power spectrum as a biomarker. *International Journal of Psychophysiology*, 160, 18–27. <https://doi.org/10.1016/j.ijpsycho.2020.12.002>
- Patton, D. E., Duff, K., Schoenberg, M. R., Mold, J., Scott, J. G., & Adams, R. L. (2003). Performance of Cognitively Normal African Americans on the RBANS in Community Dwelling Older Adults. *The Clinical Neuropsychologist*, 17(4), 515–530. <https://doi.org/10.1076/clin.17.4.515.27948>
- Poil, S.-S., De Haan, W., van der Flier, W. M., Mansvelde, H. D., Scheltens, P., & Linkenkaer-Hansen, K. (2013). Integrative EEG biomarkers predict progression to Alzheimer’s disease at the MCI stage. *Frontiers in Aging Neuroscience*, 5. <https://doi.org/10.3389/fnagi.2013.00058>
- Randolph, C., Tierney, M. C., Mohr, E., & Chase, T. N. (1998). The Repeatable Battery for the Assessment of Neuropsychological Status (RBANS): Preliminary Clinical Validity. *Journal of Clinical and Experimental Neuropsychology*, 20(3), 310–319. <https://doi.org/10.1076/jcen.20.3.310.823>
- R Core Team (2021). R: A language and environment for statistical computing. R Foundation for Statistical Computing, Vienna, Austria. URL <https://www.R-project.org/>.
- RStudio Team (2020). RStudio: Integrated Development for R. RStudio, PBC, Boston, MA URL <http://www.rstudio.com/>.
- Salthouse, T. A. (2000). Aging and measures of processing speed. *Biological Psychology*, 54(1), 35–54. [https://doi.org/10.1016/S0301-0511\(00\)00052-1](https://doi.org/10.1016/S0301-0511(00)00052-1)
- Salthouse, T. A., & Davis, H. P. (2006). Organization of cognitive abilities and neuropsychological variables across the lifespan. *Developmental Review*, 26(1), 31–54. <https://doi.org/10.1016/j.dr.2005.09.001>
- Schaefer, S. Y., Dibble, L. E., & Duff, K. (2015). Efficacy and Feasibility of Functional Upper Extremity Task-Specific Training for Older Adults With and Without Cognitive Impairment. *Neurorehabilitation and Neural Repair*, 29(7), 636–644. <https://doi.org/10.1177/1545968314558604>

- Schaefer, S. Y., & Hengge, C. R. (2016). Testing the concurrent validity of a naturalistic upper extremity reaching task. *Experimental Brain Research*, 234(1), 229–240. <https://doi.org/10.1007/s00221-015-4454-y>
- Schaworonkow, N., & Voytek, B. (2021). Longitudinal changes in aperiodic and periodic activity in electrophysiological recordings in the first seven months of life. *Developmental Cognitive Neuroscience*, 47, 100895.
- Thuwal, K., Banerjee, A., & Roy, D. (2021). Aperiodic and periodic components of ongoing oscillatory brain dynamics link distinct functional aspects of cognition across adult lifespan. *Eneuro*. <https://doi.org/10.1523/ENEURO.0224-21.2021>
- Tingley, D., Yamamoto, T., Hirose, K., Keele, L., & Imai, K. (2014). *Mediation: R package for causal mediation analysis*. <https://doi.org/10.18637/jss.v059.i05>
- Tran, T., Rolle, C., Gazzaley, A., & Voytek, B. (2020). Linked Sources of Neural Noise Contribute to Age-related Cognitive Decline. *Journal of Cognitive Neuroscience*, 32, 1–110. https://doi.org/10.1162/jocn_a_01584
- Tucker-Drob, E. M. (2019). Cognitive Aging and Dementia: A Life-Span Perspective. *Annual Review of Developmental Psychology*, 1(1), 177–196. <https://doi.org/10.1146/annurev-devpsych-121318-085204>
- Voss, R. F., & Clarke, J. (1975). '1/f noise' in music and speech. *Nature*, 258, 317–318. <https://doi.org/10.1038/258317a0>
- Voytek, B., & Knight, R. T. (2015). Dynamic Network Communication as a Unifying Neural Basis for Cognition, Development, Aging, and Disease. *Biological Psychiatry*, 77(12), 1089–1097. <https://doi.org/10.1016/j.biopsych.2015.04.016>
- Voytek, B., Kramer, Mark. A., Case, J., Lepage, Kyle. Q., Tempesta, Zechari. R., Knight, Robert. T., & Gazzaley, A. (2015). Age-Related Changes in 1/f Neural Electrophysiological Noise. *Journal of Neuroscience*, 35(38), 13257–13265. <https://doi.org/10.1523/JNEUROSCI.2332-14.2015>
- Wagenmakers, E.-J., Farrell, S., & Ratcliff, R. (2004). Estimation and interpretation of 1/f α noise in human cognition. *Psychonomic Bulletin & Review*, 11(4), 579–615. <https://doi.org/10.3758/BF03196615>
- Ward, L. M., & Greenwood, P. E. (2007). 1/f noise. *Scholarpedia*, 2(12), 1537. <https://doi.org/10.4249/scholarpedia.1537>
- Waschke, L., Wöstmann, M., & Obleser, J. (2017). States and traits of neural irregularity in the age-varying human brain. *Scientific Reports*, 7(1), 17381. <https://doi.org/10.1038/s41598-017-17766-4>
- Wickham et al., (2019). Welcome to the tidyverse. *Journal of Open Source Software*, 4(43), 1686, <https://doi.org/10.21105/joss.01686>



A**B**





Labels ○ YA ● OA

