

1 **Evaluation of a fully automated high-throughput SARS-CoV-2 multiplex qPCR**  
2 **assay with build-in screening functionality for DelHV69/70- and N501Y variants**  
3 **such as B.1.1.7**

4  
5 Dominik Nörz<sup>1</sup>, Moritz Grunwald<sup>1</sup>, Flaminia Olearo<sup>1</sup>, Nicole Fischer<sup>1</sup>, Martin Aepfelbacher<sup>1</sup>, Susanne  
6 Pfefferle<sup>1</sup> und Marc Lütgehetmann<sup>1</sup>

7  
8 <sup>1</sup> University Medical Center Hamburg-Eppendorf (UKE), Institute of Medical Microbiology, Virology  
9 and Hygiene, Hamburg, Germany

10  
11

12

13

14

15

16

17

18

19

20

21

22

23 **Address correspondence to:**

24 Marc Lütgehetmann

25 Institute of Medical Microbiology, Virology and Hygiene

26 Martinstraße 52

27 D-20246 Hamburg

28 [mluetgeh@uke.de](mailto:mluetgeh@uke.de)

29

30

31

32

## 33 1 Abstract

34 **Background:** New SARS-CoV-2 variants with increased transmissibility, like B.1.1.7 from  
35 England or B1.351 from South Africa, have caused considerable concern worldwide. In order  
36 to contain the spread of these lineages, it is of utmost importance to have rapid, sensitive and  
37 high-throughput detection methods at hand. **Methods:** Analytical sensitivity was assessed for  
38 both wild-type SARS-CoV-2 and B.1.1.7 lineage by serial dilution. A total of 141 clinical samples  
39 were subjected to the test and results compared to a commercial manual typing-PCR assay  
40 and NGS. **Results:** The multiplex assay is highly sensitive for detection of SARS-CoV-2 RNA in  
41 clinical samples, with an LoD of 25.82 cp/ml (CI: 11.61 - 57.48). LoDs are slightly higher for the  
42 HV68/70 deletion (111.36 cp/ml; CI: 78.16 - 158.67) and the N501Y SNP (2548.04 cp/ml, CI: 1592.58  
43 - 4076.73). A total of 141 clinical samples were tested with the assay, including 16 samples containing  
44 SARS-CoV-2 of the B.1.1.7 lineage. Three non-B.1.1.7 samples contained a HV69/70 deletion. All were  
45 correctly identified by the multiplex assay. **Conclusion:** We describe here a highly sensitive, fully  
46 automated multiplex PCR assay for the simultaneous detection of del-HV69/70 and N501Y  
47 that can distinguish between lineages B.1.1.7 and B1.351. The assay allows for high-  
48 throughput screening for relevant variants in clinical samples prior to sequencing.

49

## 50 2 Introduction:

51 A number of novel SARS-CoV-2 variants that emerged in fall 2020, some of which show  
52 increased transmissibility and possible immune escape, are increasingly attracting worldwide  
53 attention (1, 2).

54 The B.1.1.7 lineage (VOC202012/01, 501Y.V1) first emerged in southern England and is  
55 notable for an unusually high number of mutations with no direct common ancestor  
56 compared to previous sequences (3, 4). In particular, non-synonymous spike-gene mutations  
57 such as the N501Y SNP (single nucleotide polymorphism) may lead to changes in receptor  
58 binding properties (5). Another variant, B.1.351 (501Y.V2) first described in south Africa, is  
59 characterized by the same spike mutation, along with E484K and others (6). Both have largely  
60 replaced previously circulating lineages in their respective areas of origin, indicating improved  
61 host adaptation and immune evasion.

62

63 As a result of increased awareness in public health and science institutions, there has been a  
64 rapidly growing demand for whole genome sequencing worldwide in order to recognize and  
65 map the spread of these emerging variants. In this context, the speed and scalability of fully  
66 automated RT-PCR can be highly beneficial to pre-screen samples for relevant mutations.

67 The aim of this study was to create and validate a high-throughput first-line screening assay  
68 with the build-in ability to discriminate between relevant SARS-CoV-2 variants such as B.1.1.7  
69 and B.1.351 on a fully automated sample-to-result PCR-platform (7). Inhouse assays have  
70 previously been used successfully for SARS-CoV-2 detection and diagnostics with this system  
71 via its open mode (Cobas Omni Utility Channel) (8).

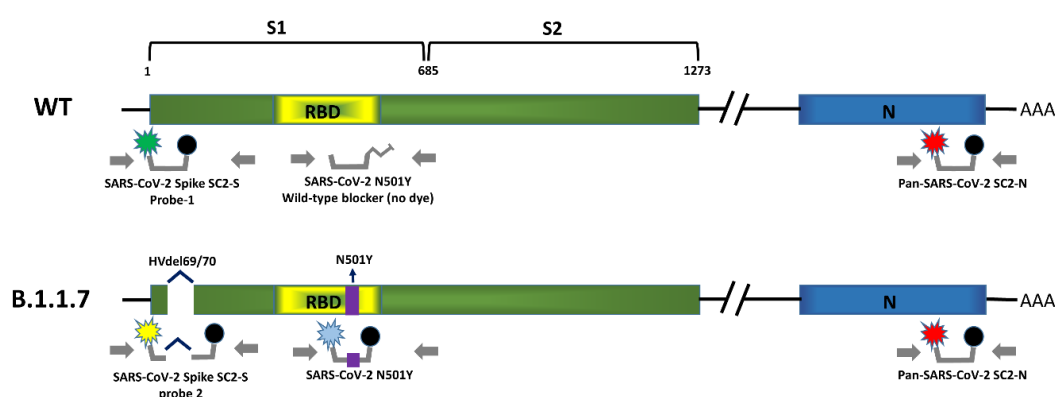
72

### 73 **3 Multiplex assay setup**

74 The basic rationale of the multiplex assay was to combine two highly sensitive diagnostic SARS-CoV-2  
75 PCR assays with additional assays to simultaneously detect relevant mutations. The SC2-assay by the  
76 US CDC (N-gene, SC2-N) was modified to serve as Pan-SCoV2 target (9). A publicly available diagnostic

77 S-gene assay by Zhen et al. serves as second target (SC2-S) (10), while also featuring a drop-out  
 78 phenomenon in the presence of a HV69/70 deletion due to probe location, which is rescued by an  
 79 additional Taqman-probe (S-Del) that allows differentiation for wild-type and del-HV69/70. An  
 80 additional assay was designed (using Beacon designer and PrimerQuest software) and integrated into  
 81 the multiplex to detect the N501Y SNP. See *Figure 1* for a schematic overview of the PCRs and their  
 82 target regions.

a)

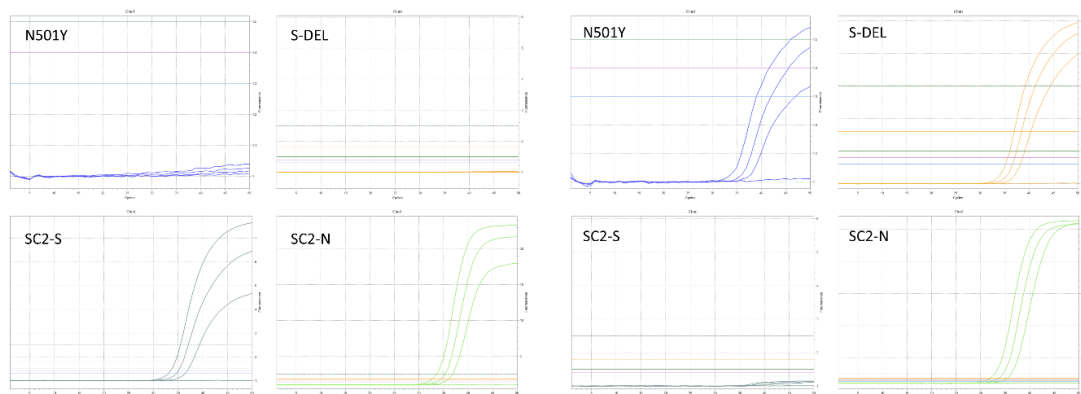


83

b)

SARS-CoV-2 wild-type  
(Accuplex Verification Panel)

SARS-CoV-2 B.1.1.7  
(clinical isolate)



84

85

86 *Figure 1:*

87 *a) Schematic overview of the primers and probes used in the novel multiplex assay and their target*  
88 *regions within the SARS-CoV-2 lineages (wildtype (WT) and B.1.1.7). SARS-CoV-2 Spike SC2 PCR targets*  
89 *the spike gene (S1) of both lineages, with probe-1 detecting the wildtype sequence and probe 2 being*  
90 *specific for the HV69/70 deletion of the B.1.1.7 lineage. The SARS-CoV-2 N501YPCR targeting the*  
91 *receptor binding domain (RBD) is specifically designed for detecting the N501Y SNP. Both lineages are*  
92 *detected by the third PCR targeting the N-gene (N).*

93 *b) Exemplary amplification curves for low concentration SARS-CoV-2 wild-type and B.1.1.7 as seen in*  
94 *the Utility Channel optimization software.*

95

96 Primers and Probes were added to MMX-R2 to form the MMR2 mastermix and loaded into cobas omni  
97 utility channel cassettes, according to instructions by the manufacturer. Final concentrations of  
98 primers and probes are indicated in *table 1*. The utility channel run protocol is outlined in *table 2*.

99 The cobas 6800/8800 internal control (IC) is a spike-in (packaged) RNA target, which is  
100 automatically added during extraction by the system. MMRX-R2-reagent already contains the  
101 internal control assay by default; the respective sequences are not disclosed by the  
102 manufacturer. The IC acts as a full process control in the same way as in commercial cobas  
103 6800/8800 IVD tests manufactured by Roche.

104

105

Assay	Primer/Probe	Sequence (5' - 3')	Conc. [nM]	Inclusivity	Ref.
Pan-SARS-CoV-2 SC2-N	Fwd:	5'-CTG CAG ATT TGG ATG ATT TCT (OMe-C)C -3'	400	SARS-CoV-2 any lineage	[9]
	Rev:	5'- CCT TGT GTG GTC TGC ATG AGT T(OMe-U)A G -3'	400		
	Probe:	5'- Atto620- ATT GCA ACA (BMN-Q620)ATC CAT GAG CAG TGC TGA CTC -BMN-Q620 -3'	100		
SARS-CoV-2 Spike SC2-S	Fwd:	5'- TCA ACT CAG GAC TTG TTC T(OMe-U)A C -3'	400	SARS-CoV-2 Probe-1: HV69/70 WT Probe-2: del-HV69/70	[10]
	Rev:	5'- TGG TAG GAC AGG GTT AT(OMe-C) AAA C -3'	400		
	Probe-1:	5'- Fam- TGG TCC CAG (ZEN)AGA CAT GTA TAG CAT -Iowa Black NFQ -3'	75		
	Probe-2:	5'- YakYellow- TGG TCC CAG A(+G)A T(+A)G C(+A)T -BHQ1	75		
SARS-CoV-2 Spike N501Y	Fwd:	5'- CCG GTA GCA CAC CTT G(OMe-U)A AT -3'	400	Spike N501Y	[This study]
	Rev:	5'- AGT TGC TGG TGC ATG TA(OMe-G) AA -3'	400		
	Probe:	5'- Atto390- CC(+A) (+A)CC CAC (+T)(+T)(+A) TGG T(+G) -BHQ1 -3'	150		
	Blocker:	5'- CC(+A) (+A)CC CAC (+T)(+A)(+A) TGG T(+G) -C3-Spacer -3'	150		

106

107 *Table 1: Primers and probes were custom made by Integrated DNA Technologies (Coralville, USA), Ella*  
108 *Biotech GmbH (Martinsried, Germany) and biomers.net GmbH (Ulm, Germany). Final concentrations*  
109 *of oligonucleotides indicated above refer to concentrations within the final reaction mix. OMe-X, 2'O-*  
110 *methyl-RNA base. BMN-Q620, proprietary dark-quencher by biomers.net can likely be replaced with*  
111 *e.g. BHQ2. +X, Locked nucleic acid (LNA) base.*

112

113

114

115

116

117

118

119

120

121

122

Software settings					
Sample type	Swab (400 µL)				
Channels	1: <i>N501Y</i>	2: <i>SC2-S</i>	3: <i>S-DEL</i>	4: <i>SC2-N</i>	5: <i>IC</i>
RFI	1.3	1.5	1.8	1.4	1.5
PCR cycling conditions					
	UNG incubation	Pre-PCR step	1 <sup>st</sup> measurement	2 <sup>nd</sup> measurement	Cooling
No. of cycles	Predefined	1	5	45	Predefined
No. of steps		3	2	2	
Temperature		55°C; 60°C; 65°C	95°C; 55°C	91°C; 58°C	
Hold time		120 s; 360 s; 240 s	5 s; 30 s	5 s; 25 s	
Data acquisition		None	End of each cycle	End of each cycle	

123

124 *Table 2: Run protocol for the SCOV2\_VAR\_UCT assay. Configuration was done with cobas omni Utility*

125 *Channel software according to instructions by the manufacturer.*

126

127

## 128 **4 Evaluation of Sensitivity, Specificity and clinical**

### 129 **performance**

130 For analytical performance evaluation, quantified SARS-COV-2 reference material (Seracare Accuplex  
 131 SARS-CoV-2, FluA/B and RSV Verification Panel, Milford, USA) and patient sample containing B.1.1.7  
 132 lineage (according to SARS CoV-2 whole genome sequencing) were used to prepare dilution series in  
 133 pooled negative patient samples. Absolute quantification of the latter was carried out using the same  
 134 assay with preexisting linearity data and the Accuplex verification panel as reference on the cobas6800  
 135 system (11). 2-fold dilution series (8 repeats per dilution step) were used to determine lower limit of  
 136 detection.

137 To evaluate clinical performance and specificity of differentiation, a set of 101 samples RT-PCR positive  
138 for SARS-CoV-2 were subjected to the SCOV2\_VAR\_UCT. Of these samples, 14 were predetermined as  
139 B.1.1.7 lineage. Presence of the respective mutations was confirmed by a set of commercial assays by  
140 TIB MOL (VirSniP Spike N501Y and Del69/70, Berlin, Germany). Presence of del-HV69/70 and N501Y  
141 mutations in the non-B117 set was precluded using the same commercial assays. A further 40 SARS-  
142 CoV-2 negative samples (by cobas SARS-CoV-2 IVD test), and a cross-reactivity panel containing various  
143 respiratory pathogens (*supplementary table 1*) were tested with the assay to assess overall specificity.  
144  
145 Overall analytic LoD (95% chance of detection) was determined as 25.82 cp/ml (CI: 57.48 – 11.61) (SC2-  
146 S LoD: 73.89; CI: 151.03 – 36.16. SC2-N LoD: 11.13, CI 16.02 – 7.73), as seen in *supplementary table 2*.  
147 There were no significant differences with B.1.1.7 lineage (Lod: 20.37, CI: 97.86 – 20.37) (S-DEL LoD:  
148 111.36; CI: 158.67 – 78.16. SC2-N LoD: 20.37; CI: 97.86 – 20.37). Limit for successful detection of an  
149 N501Y SNP was 2548.04 cp/ml (CI: 4076.73 – 1592.58), indicating that the N501Y SNP-assay is about  
150 100-fold less sensitive than the two diagnostic-grade SARS-CoV-2 assays.  
151 Of the 101 SARS-CoV-2 positive samples, all were correctly identified by the SCOV2\_VAR\_UCT. 16  
152 B.1.1.7 lineage samples were classified as positive for N501Y and del-HV69/70. 3 of the 85 non-B.1.1.7  
153 samples were positive for del-HV69/70, but not N501Y, which was confirmed by the TIB MOL reference  
154 assays (*table 3*). This is in line with existing data showing sporadic occurrences of del-HV69/70  
155 mutations within the endemic SARS-CoV-2 population (approx. 6%).

156

157

158

159

160

161



	SCOV2_VAR_UCT				Total
	Target-1: N501Y	Target-2: SC2-S	Target-3: S-Del	Target-4: SC2-N	
<u>SARS-CoV-2 positive</u>					
Non-B.1.1.7, HV69/70 WT	0/82	82/82	0/82	82/82	82
Non-B.1.1.7, Del-HV69/70	0/3	0/3	3/3	3/3	3
B.1.1.7 lineage	16/16	0/16	16/16	16/16	16
<u>SARS-CoV-2 negative</u>	0/40	0/40	0/40	0/40	40
				Total Samples	141

162

163 *Table 3: Clinical samples (UTM based) were predetermined positive or negative in routine diagnostics*  
 164 *(commercial and inhouse methods) and checked for the Del-69/70 and N501Y spike-gene mutations*  
 165 *using commercial VirSNIp assays by TIB MOL (Berlin, Germany). B.1.1.7 lineage samples were*  
 166 *predetermined by whole genome sequencing. All samples and mutations were correctly detected by*  
 167 *the SCOV2\_VAR assay.*

168

169

170

## 171 **5 Discussion and Conclusion**

172 Diagnostic labs in Europe are increasingly confronted with demands for rapid differentiation of SARS-  
 173 CoV-2 isolates due to concerns about potentially higher transmissibility and immune escape with  
 174 recently emerged lineages such as B.1.1.7 and B1.351 (1, 6). Previous reports have demonstrated how  
 175 inclusivity issues of commercial assays such as the “TaqPath RT-PCR COVID-19 kit” (Thermo Fischer  
 176 Scientific, USA) can coincidentally be used to pre-screen for B.1.1.7 lineage variants because of a drop-  
 177 out phenomenon in one of the targets associated with del-HV69/70 (12). However, this method runs

178 the risk of misinterpreting sporadic HV69/70 deletions, of which we found three within the B.1.1.7  
179 negative set. Mutations like N501Y have independently occurred multiple times in areas with high  
180 incidence rates, implying advantages in an environment of high background host-immunity. Their  
181 relevance may further grow in the context of ongoing vaccination campaigns. Commercial solutions  
182 for SARS-CoV-2 SNP detection such as the TIB MOL VirSniP-kits are in the process of entering the  
183 diagnostics market; however, they mostly consist of manual protocols, thus limiting their suitability for  
184 large scale application. The SCOV2\_VAR\_UCT is able to detect both the del-HV69/70 and N501Y  
185 mutations, relevant for B.1.1.7 and B1.351 and further adaptations can be implemented to also pick up  
186 new emerging SNPs if necessary. It is self-evident that such methods cannot be a replacement for  
187 whole genome sequencing; they do, however, represent a valuable asset to quickly detect clusters and  
188 help better direct NGS capacities.

189 In conclusion, the SCOV2\_VAR\_UCT multiplex presented in this study combines highly sensitive SARS-  
190 CoV-2 detection with relatively reliable identification of the B.1.1.7 lineage by detecting two hallmark  
191 mutations. Furthermore, other lineages featuring the N501Y SNP, but lacking the deletion, would also  
192 be recognized as abnormal for further investigation. It can thus be used either as a secondary assay for  
193 pre-screening prior to sequencing, or as a first-line diagnostic assay. Using the cobas6800/8800  
194 automated systems, this setup can be employed for high-throughput screening for B.1.1.7 and other  
195 variants, requiring minimal hands-on time.

196

## 197 **6 Author contribution**

198 ML, SP, DN, FO, NF and MA conceptualized and supervised the study. DN and MG performed  
199 the experiments. DN, ML, SP, NF, FO, and MA wrote and edited the manuscript. All authors  
200 agreed to the publication of the final manuscript.

201

## 202 7 Competing interest

203 ML received speaker honoraria and related travel expenses from Roche Diagnostics.

204 All other authors declare no conflict of interest.

205

## 206 References:

- 207 1. Kirby T. 2021. New variant of SARS-CoV-2 in UK causes surge of COVID-19. *The Lancet*  
208 *Respiratory Medicine* 9:e20-e21.
- 209 2. Wang P, Liu L, Iketani S, Luo Y, Guo Y, Wang M, Yu J, Zhang B, Kwong PD, Graham BS, Mascola  
210 JR, Chang JY, Yin MT, Sobieszczyk M, Kyratsous CA, Shapiro L, Sheng Z, Nair MS, Huang Y, Ho  
211 DD. 2021. Increased Resistance of SARS-CoV-2 Variants B.1.351 and B.1.1.7 to Antibody  
212 Neutralization. *bioRxiv* doi:10.1101/2021.01.25.428137:2021.01.25.428137.
- 213 3. Volz E, Mishra S, Chand M, Barrett JC, Johnson R, Geidelberg L, Hinsley WR, Laydon DJ, Dabrera  
214 G, O'Toole Á, Amato R, Ragonnet-Cronin M, Harrison I, Jackson B, Ariani CV, Boyd O, Loman  
215 NJ, McCrone JT, Gonçalves S, Jorgensen D, Myers R, Hill V, Jackson DK, Gaythorpe K, Groves N,  
216 Sillitoe J, Kwiatkowski DP, Flaxman S, Ratmann O, Bhatt S, Hopkins S, Gandy A, Rambaut A,  
217 Ferguson NM. 2021. Transmission of SARS-CoV-2 Lineage B.1.1.7 in England: Insights from  
218 linking epidemiological and genetic data. *medRxiv*  
219 doi:10.1101/2020.12.30.20249034:2020.12.30.20249034.
- 220 4. Kemp S, Harvey W, Lytras S, Carabelli A, Robertson D, Gupta R. 2021. Recurrent emergence  
221 and transmission of a SARS-CoV-2 Spike deletion H69/V70. *bioRxiv*  
222 doi:10.1101/2020.12.14.422555:2020.12.14.422555.
- 223 5. Luan B, Wang H, Huynh T. 2021. Molecular Mechanism of the N501Y Mutation for Enhanced  
224 Binding between SARS-CoV-2's Spike Protein and Human ACE2 Receptor. *bioRxiv*  
225 doi:10.1101/2021.01.04.425316:2021.01.04.425316.
- 226 6. Tegally H, Wilkinson E, Giovanetti M, Iranzadeh A, Fonseca V, Giandhari J, Doolabh D, Pillay S,  
227 San EJ, Msomi N, Mlisana K, von Gottberg A, Walaza S, Allam M, Ismail A, Mohale T, Glass AJ,  
228 Engelbrecht S, Van Zyl G, Preiser W, Petruccione F, Sigal A, Hardie D, Marais G, Hsiao M,  
229 Korsman S, Davies M-A, Tyers L, Mudau I, York D, Maslo C, Goedhals D, Abrahams S, Laguda-  
230 Akingba O, Alisoltani-Dehkordi A, Godzik A, Wibmer CK, Sewell BT, Lourenço J, Alcantara LCJ,  
231 Pond SLK, Weaver S, Martin D, Lessells RJ, Bhiman JN, Williamson C, de Oliveira T. 2020.  
232 Emergence and rapid spread of a new severe acute respiratory syndrome-related coronavirus  
233 2 (SARS-CoV-2) lineage with multiple spike mutations in South Africa. *medRxiv*  
234 doi:10.1101/2020.12.21.20248640:2020.12.21.20248640.
- 235 7. Poljak M, Korva M, Knap Gašper N, Fujs Komloš K, Sagadin M, Uršič T, Avšič Županc T, Petrovec  
236 M. 2020. Clinical evaluation of the cobas SARS-CoV-2 test and a diagnostic platform switch

- 237 during 48 hours in the midst of the COVID-19 pandemic. *Journal of Clinical Microbiology*  
238 doi:10.1128/jcm.00599-20:JCM.00599-20.
- 239 8. Pfefferle S, Reucher S, Nörz D, Lütgehetmann M. 2020. Evaluation of a quantitative RT-PCR  
240 assay for the detection of the emerging coronavirus SARS-CoV-2 using a high throughput  
241 system. *Eurosurveillance* 25:2000152.
- 242 9. CDC. 2020. Research Use Only CDC Influenza SARS-CoV-2 (Flu SC2) Multiplex Assay Real-Time  
243 RT-PCR Primers and Probes. CDC Website.
- 244 10. Zhen W, Berry GJ. 2020. Development of a New Multiplex Real-Time RT-PCR Assay for Severe  
245 Acute Respiratory Syndrome Coronavirus 2 (SARS-CoV-2) Detection. *The Journal of molecular*  
246 *diagnostics : JMD* 22:1367-1372.
- 247 11. Nörz D, Frontzek A, Eigner U, Oestereich L, Fischer N, Aepfelbacher M, Pfefferle S,  
248 Lütgehetmann M. 2020. Pushing beyond specifications: Evaluation of linearity and clinical  
249 performance of a fully automated SARS-CoV-2 RT-PCR assay for reliable quantification in blood  
250 and other materials outside recommendations. *medRxiv*  
251 doi:10.1101/2020.05.28.20115469:2020.05.28.20115469.
- 252 12. Bal A, Destras G, Gaymard A, Stefic K, Marlet J, Eymieux S, Regue H, Semanas Q, d'Aubarede  
253 C, Billaud G, Laurent F, Gonzalez C, Mekki Y, Valette M, Bouscambert M, Gaudy-Graffin C, Lina  
254 B, Morfin F, Josset L. 2021. Two-step strategy for the identification of SARS-CoV-2 variant of  
255 concern 202012/01 and other variants with spike deletion H69-V70, France, August to  
256 December 2020. *medRxiv* doi:10.1101/2020.11.10.20228528:2020.11.10.20228528.  
257