

1 **The antibody response to SARS-CoV-2 infection persists over at least 8 months in**
2 **symptomatic patients**

3

4 Riccardo Levi^{1,2*}, Leonardo Ubaldi^{1,2*}, Chiara Pozzi², Giovanni Angelotti², Maria Teresa Sandri^{1,2},
5 Elena Azzolini^{1,2}, Michela Salvatici², Victor Savevski², Alberto Mantovani^{1,2,3} and Maria
6 Rescigno^{1,2,#}

7

8 ¹Humanitas University, Department of Biomedical Sciences, Via Rita Levi Montalcini, 20072 Pieve
9 Emanuele, MI, Italy.

10 ²IRCCS Humanitas Clinical and Research Center, Via Manzoni 56, 20089 Rozzano, MI, Italy.

11 ³The William Harvey Research Institute, Queen Mary University of London, London, UK

12

13 *These authors contributed equally to the work

14

15

16 #Corresponding author

17 E-mail: maria.rescigno@hunimed.eu

18 Humanitas University

19 Via Rita Levi Montalcini, 4

20 20072 Pieve Emanuele (MI) Italy

21

22

23

24

25

26

27

28

29 **Abstract**

30

31 The factors involved in the persistence of antibodies to SARS-CoV-2 are unknown. We evaluated
32 the antibody response to SARS-CoV-2 in personnel from 10 healthcare facilities and its association
33 with individuals' characteristics and COVID-19 symptoms in an observational study. We enrolled
34 4735 subjects (corresponding to 80% of all personnel) for three time points over a period of 8-10
35 months. For each participant, we determined the rate of antibody increase or decrease over time in
36 relation to 93 features analyzed in univariate and multivariate analyses through a machine learning
37 approach. In individuals positive for IgG (≥ 12 AU/mL) at the beginning of the study, we found an
38 increase [$p= 0.0002$] in antibody response in symptomatic subjects, particularly with
39 anosmia/dysgeusia (OR 2.75, 95% CI 1.753 – 4.301), in a multivariate logistic regression analysis.
40 This may be linked to the lingering of SARS-CoV-2 in the olfactory bulb.

41

42

43 **Introduction**

44 It is becoming clear that the antibody response to SARS-CoV-2 can last at least 6 months in
45 symptomatic patients ¹, but it seems to decline in asymptomatics ². Similarly, a reduction of
46 antibody response in asymptomatic individuals was shown in a study with a fewer number of
47 individuals (n = 37) ³. The antibody response in COVID-19 patients is associated with the
48 establishment of a memory B cell response which is higher at 6 months ¹, however, it is not clear
49 whether there are features that correlate with this sustained B cell response. We previously showed
50 that an anti-SARS-CoV-2 serological analysis allowed us to follow the diffusion of the virus within
51 healthcare facilities in areas differently hit by the virus ⁴. At 8-10 months of distance, we analyzed
52 the duration of this antibody response and evaluated whether there were features correlating with
53 maintenance, reduction or increase of the antibody response.

54

55 **Results**

56 We analyzed the persistence of the antibody response in healthcare workers that underwent
57 immunological surveillance for SARS-CoV-2 exposure and resulted positive for anti-Spike 1/2 IgG
58 (IgG \geq 12 AU/mL). Although the test manufacturer considers positive subjects above 15 AU/mL
59 and equivocal those between 12 and 15 (AU/mL), based on our previous publication showing that
60 these two groups behaved very similarly we considered positive everybody \geq 12 AU/mL⁴. The
61 accrual was on a voluntary basis and did not occur in the symptomatic phase (at around 43 +/- 17
62 days from COVID-19 assessment when symptomatic). We excluded all of the individuals that
63 became positive over the course of the analysis so to focus only on those individuals that were
64 exposed during the first wave of infection to evaluate the duration of the antibody response. We
65 assessed the correlation of the rate of antibody increase or decrease with the different analyzed
66 features for the first two time points of observation in subjects with IgG \geq 12 AU/mL. In Tables 1
67 and 2 are reported the rates for individual classes of features with relative statistical analysis. As
68 shown, females sustained the antibody response better than males ($p = 0.01$); similarly non-medical
69 healthcare professionals (specifically, healthcare partner operators) had higher antibody rates ($p =$
70 0.0009). The levels of antibodies increased in hospitals located in the Bergamo area (Castelli and
71 Gavazzeni $p < 0.0001$) (Table 1) which was more hit by COVID-19 (37 – 43% of individuals with
72 IgG \geq 12) ⁴. More important, the IgG rate in individuals which were positive for IgG (IgG \geq 12
73 AU/mL; n = 613) at the beginning of the study was increased ($p < 0.000001$) over time, and this
74 increase was either minor in asymptomatics (n = 91, $p = 0.00003$) and paucisymptomatics (n = 203)
75 or strong in symptomatics (n = 319, $p = 0.0006$) (Table 2). This may explain why individuals from
76 hospitals in the Bergamo area or non-medical healthcare professionals had higher levels of

77 antibodies as most of them suffered from symptomatic COVID-19 (59% and 73%, respectively).
78 On the contrary, those that had an intermediate IgG titer ($3.8 < \text{IgG} < 12$ AU/mL considered as
79 negative) displayed all a significant reduction in IgG rate ($p < 0.000001$) (Table 1). However, this
80 population is considered as negative for SARS-CoV-2 IgG according to manufacturer. Many
81 symptoms, including fever, cough, muscle pain, asthenia, tachycardia and anosmia/dysgeusia,
82 correlated with an increase of antibodies in the first two time points of observation (Table 2).
83 As we noticed that the distribution of the rate feature presented a high value of kurtosis (see
84 methods) we restricted the data set to subjects with IgG rates either below the 10th percentile [$< -$
85 0.033 ($n = 454$)] or above the 90th percentile [> 0.005 ($n = 445$)] to prevent a bias-variance problem
86 in machine learning models. The accuracy of these rates was confirmed by a linear regression
87 analysis. In Figure 1a and 1b are shown the regression diagnostic plots of predicted values against
88 residuals of training and test data according to the threshold (< -0.033 AU/ml*day and > 0.005
89 AU/ml*day). In Table 3 is shown the Chi-squared analysis for the populations below or above the
90 set threshold rates. We found that as for the previous analysis, males reduced the level of antibodies
91 more than females, even though this difference was no longer statistically significant ($p = 0.06$).
92 The levels of antibodies increased in hospitals located in the Bergamo area (Castelli and Gavazzeni:
93 $p = 0.0032$ and $p = 0.0005$, respectively) which was more hit by COVID-19 (37 – 43% of
94 individuals with $\text{IgG} \geq 12$) and most of the individuals were symptomatic⁴ while it decreased in
95 Humanitas Rozzano ($p=0.0806$) which was less heavily hit (10% of individuals with $\text{IgG} \geq 12$) and
96 had less symptomatic individuals⁴ (Table 3). The rate decreased in asymptomatic (65% of subjects
97 fell in the group < -0.033 ; $p < 0.000001$), remained constant in paucisymptomatic and increased in
98 symptomatic individuals (62% of subjects were in the group > 0.005 ; $p < 0.000001$) (Table 4).
99 Interestingly, among the different symptoms, fever, cough, muscle pain, asthenia, dyspnea,
100 tachycardia, chest pain and anosmia/dysgeusia all correlated with a higher number of individuals
101 falling into the group with rate > 0.005 , indicating that these symptoms were strongly associated
102 with sustained/increased antibody response ($0.000001 < p < 0.05$, Table 4 and Suppl. Fig. 1).
103 Among these, anosmia/dysgeusia was associated with the highest percentage of subjects presenting
104 with increased IgG rate (69%; $p < 0.000001$, Table 4 and Suppl. Fig. 1). Having observed
105 differences according to sex, role and site, and since many symptoms are linked, we performed a
106 multivariate statistical analysis based on a supervised machine learning classification approach (see
107 methods). Through a Bayesian hyperparameter optimization algorithm, we assessed that the best
108 machine learning model is a Bagging classifier of 7 logistic regression, which was evaluated both
109 on a training (Accuracy = 76.26; ROC AUC = 76.30; Recall = 81.14) and a test dataset (Accuracy =
110 72.00; ROC AUC = 72.12; Recall = 81.08), where the training/test split is 80%-20%, stratified by

111 outcome. Classification metrics on training set and test set are comparable, which shows that the
112 model does not present overfitting on training data. In Figure 1c is shown the multivariate logistic
113 regression analysis. We found that the increased rate was associated primarily with
114 anosmia/dysgeusia (regression coefficient=1.0, 95% CI 0.56 – 1.46) and with chest pain (regression
115 coefficient=0.84, 95% CI 0.24 – 1.44), while the decreased rate was associated to subjects with
116 intermediate IgG ($3.8 < \text{IgG} < 12$) (regression coefficient = -1.61, 95% CI -2.03 – -1.0), which may
117 be related to a noise in the instrument testing, and with past neoplasia (regression coefficient = -
118 1.38, 95% CI -2.4 – -0.37). Interestingly, 54% of subjects with chest pain also presented loss of
119 smell/taste while only 22% of subjects with smell/taste dysfunction also had chest pain, suggesting
120 that IgG increase in the symptomatic population is primarily linked to anosmia and dysgeusia (not
121 shown). In figure 1d are shown the odds ratio relative to figure 1c, which for chest pain is 2.32
122 (95% CI 1.27 – 4.24), for anosmia/dysgeusia is 2.75 (95% CI 1.75 – 4.30), for subjects with
123 intermediate IgG ($3.8 < \text{IgG} < 12$) is 0.2 (95% CI 0.13 – 0.30) and for subjects with past neoplasia
124 is 0.25 (95% CI 0.09 – 0.69). Overall, these results indicate that although many symptoms are
125 associated with an increase of IgG abundance in the observation time, only anosmia/dysgeusia and
126 chest pain are associated to a higher IgG rate in the multivariate logistic regression analysis. By
127 contrast the population with past neoplasia or intermediate levels of IgG ($3.8 < \text{IgG} < 12$ AU/mL)
128 are the ones that display a reduction in IgG. However, the significance of the reduction in the
129 detection of antibodies in subjects with intermediate levels of IgG remains to be investigated, as this
130 population did not represent early infected individuals because they were all nasopharyngeal swab
131 negative ⁴.

132 We then analyzed whether the antibody response was maintained over time in the third time point
133 of analysis (n = 499) which was evaluated between November and December 2020 thus reaching an
134 observation of 8-10 months. As shown in Figure 2 and Suppl. Fig. 2 we observed that both
135 symptomatic and paucisymptomatic individuals still displayed a higher level of antibodies, however
136 they did not increase between phase 2 and phase 3. By contrast, asymptomatic individuals did not
137 increase their IgG levels over time.

138

139 **Discussion**

140 We analyzed the 8-10-month duration of an antibody response to SARS-CoV-2 in personnel from 9
141 healthcare facilities and an international medical school (Humanitas University) in Northern Italy in
142 areas differently hit by the virus ⁴. We show that the antibody response is stable both in
143 symptomatic and asymptomatic/paucisymptomatic individuals and is increased in females and in
144 non-medical healthcare professionals. Previously, it has been shown in a study conducted in the

145 British population that the antibody response declines of nearly 22% in symptomatic individuals
146 and of 64% in asymptomatic individuals². However, this study was based on a prick qualitative test
147 and thus the decline may be related to the sensitivity of the test. We also observed that the antibody
148 response declined when we analyzed the group ($3.8 < \text{IgG} < 12 \text{ AU/mL}$) with IgG between the limit
149 of detection (3.8 AU/mL) and the threshold of positivity ($\text{IgG} \geq 12 \text{ AU/mL}$), as set by
150 manufacturer. Whether this is linked to a difference linked to the sensitivity of the test or to a real
151 reduction in an antibody response that may or may not be specific to SARS-CoV-2, remains to be
152 established. In a previous analysis we excluded that this population represented individuals in the
153 initial phases of an infection as all of them were tested for SARS-CoV-2 by a nasopharyngeal swab
154 which however resulted negative⁴. When we analyzed the extremes, i.e. the individuals with higher
155 rates of antibody increase or decrease (< -0.033 and $> 0.005 \text{ AU/mL*day}$) we observed that
156 asymptomatics had higher negative rates while symptomatics tended to continue increasing the
157 antibody levels suggesting that extreme changes in rate separate the symptomatics from the
158 asymptomatics. As during the observation time there was very limited viral diffusion in Northern
159 Italy, as confirmed also by the finding that only 2 individuals became IgG positive and 2981
160 remained IgG negative throughout the study (all excluded from the analysis), we can conclude that
161 the sustained or augmented antibody response may not be linked to a re-exposure to the virus. In an
162 attempt to address what improved the antibody response, we found that several symptoms were
163 associated to increased rates of antibodies, however, in a multivariate logistic analysis only
164 anosmia/dysgeusia and chest pain were linked with the highest regression coefficients. Chest pain
165 and anosmia are long-lasting symptoms in COVID-19 patients⁵. In addition, anosmia and/or
166 dysgeusia are very common as they are found in around 50-70% of subjects affected by COVID-19
167^{6,7}. In our cohort (Table 2), 49% of IgG positive subjects had anosmia/dysgeusia, 28% chest pain
168 and 13.7% both anosmia/dysgeusia and chest pain, suggesting that indeed these two symptoms
169 may, either alone or in combination, associate with IgG increase. We and others previously found
170 that anosmia/dysgeusia together with fever were the symptoms that mostly characterized SARS-
171 CoV-2 exposure^{4,8}. In agreement, anosmia and dysgeusia have been proposed to be used to track
172 SARS-CoV-2 diffusion⁹. Interestingly, SARS-CoV-2 can infect the olfactory epithelium^{10,11},
173 including olfactory sensory neurons, support cells and immune cells, that express the viral entry
174 receptors ACE2 and TMPRSS2^{10,12,13}. Here, the virus can persist long and induce local
175 inflammation¹¹ and olfactory bulb abnormalities^{14,15,16}. In agreement, the loss of smell and taste
176 can persist in individuals even with RT-PCR SARS-CoV-2 negativity in the nasopharyngeal swab
177 for months^{11,17}. Supporting this possibility, we did not detect any further increase of IgG levels

178 between phase 2 and phase 3 suggesting that when individuals eliminate the virus then there is no
179 further increase of the antibody response.

180 One limitation of our study is that we followed our healthcare workers for the exposure to SARS-
181 CoV-2 via measuring the anti S1/S2 IgG response and have not evaluated any other antibody
182 subtype nor their neutralizing activity, even though the test used has correlated the antibody levels
183 with their neutralizing activity, as reported in the methods section.

184 Overall, these data suggest that increased antibody response in patients with anosmia/dysgeusia
185 may be linked to persistence of the virus in the olfactory bulb which through local inflammation
186 and release of antigens, maintains and boosts the antibody response. This study opens new
187 perspectives on the immunity to SARS-CoV-2 and warrants further investigation on the role of
188 anosmia/dysgeusia on antibody response through the design of prospective observational studies
189 coupling the testing of SARS-CoV-2 persistence in the olfactory bulb, loss of smell or taste and
190 antibody titers. In addition, we show that the antibody response to the natural infection is durable
191 and persists for at least 8 months. If the antibody response elicited by the vaccines is similarly
192 effective, we may expect it to last for at least the same amount of time. Further, this observation
193 strongly supports our findings and those of others that convalescent symptomatic COVID-19
194 patients should receive only one dose of vaccine^{18, 19, 20, 21} and suggests that this may occur even at
195 months of distance from developing the disease as their antibody response will just need to be
196 boosted.

197

198 **Methods**

199 Study population

200 This observational study has been approved by the international review board of Istituto Clinico
201 Humanitas for all participating institutes (clinicaltrials.gov NCT04387929). Accrual was on a
202 voluntary basis: it started on April 28th and more than 80% of personnel participated (n = 4735).
203 The study foresees 4 blood collections every 3/4 months. 10 different centers participate: Istituto
204 Clinico Humanitas (ICH), Rozzano (MI); Humanitas Gavazzeni, Bergamo; Humanitas Castelli,
205 Bergamo; Humanitas Mater Domini (HMD), Castellanza (VA); Humanitas Medical Center, HMC,
206 Varese; Humanitas University, Pieve Emanuele (MI); Humanitas San Pio X, Milano; Humanitas
207 Cellini, Torino; Humanitas Gradenigo, Torino; Clinica Fornaca, Torino. All participants signed an
208 informed consent and filled a questionnaire before blood collection. We analyzed 93 features (72
209 categorical and 17 numerical and 4 temporal) including, age, sex, location, professional role, time
210 between sample collections, COVID-19 symptoms (fever, sore throat, cough, muscle pain, asthenia,
211 anosmia/dysgeusia (loss of smell and taste), gastrointestinal symptoms, conjunctivitis, dyspnea,

212 chest pain, tachycardia, pneumonia), home exits and smart-working, comorbidities (diabetes,
213 asthma, neoplasia, autoimmunity, cardiovascular disorders, hepatic disorders). We considered
214 “asymptomatics” subjects without any symptoms; “paucisymptomatics” individuals that developed
215 1 or 2 symptoms; “symptomatics” individuals with more than 3 symptoms. None of the participants
216 were enrolled at the time of symptoms. Thus, when the serological test was performed, they were
217 either asymptomatics or the symptoms had disappeared. After excluding for employees that became
218 positive for SARS-CoV-2 IgG ($n = 2$) during the observation period and those that dropped from
219 phase 1 or for which we were missing at least two features, we analyzed 4534 participants (4.25%
220 drop out). Here we show the results of the end of phase 2 and phase 3 (second and third blood
221 sampling).

222

223 IgG measure

224 For the determination of IgG anti SARS-CoV-2, the Liaison SARS-CoV-2 S1/S2 IgG assay
225 (DiaSorin, Saluggia (VC), Italy) was used ²². The method is an indirect chemiluminescence
226 immunoassay for the determination of anti-S1 and anti-S2 specific antibodies. According to kit
227 manufacturer, the test discriminates among negative (< 15 AU/mL; with 3.8 as the limit of IgG
228 detection) and positive (≥ 15 AU/mL) subjects. We considered positive subjects with IgG plasma
229 levels ≥ 12 AU/mL rather than those with IgG ≥ 15 AU/mL, as suggested by the test manufacturer,
230 based on our previous publication showing that these two groups behaved very similarly ⁴. In
231 addition, we considered also individuals with IgG comprised between 3.8 and 12 AU/mL (which
232 we called IgG med: $3.8 < \text{IgG} < 12$ AU/mL). Consistency and reproducibility of the antibody test in
233 samples collected in the two time points was confirmed for a limited number of individuals ($n = 50$)
234 displaying different degrees of IgG positivity. The LIAISON assay's performance in comparison to
235 a microneutralization assay is shown in Bonelli et al. ²². The LIAISON serological S1/S2 assay can
236 distinguish between neutralization positive and negative samples at cut-offs near 15 AU/mL, and
237 additionally the data indicate that 92% of the samples with >80 AU/mL had neutralization
238 titers $\geq 1:80$, while 87% of samples with >80 AU/mL had neutralization titers $\geq 1:160$.

239 As the samples were analyzed in separate batches, we compared the test accuracy on 21 samples
240 from the phase 1 with the detection kits of phase 1 and phase 2 and demonstrated that the tested IgG
241 were almost over-imposable (Suppl. Fig. 3).

242

243 Statistical analysis and model

244 We first cleared the dataset by eliminating data from all of those subjects that did not develop an
245 IgG response over time ($IgG \leq 3.8$ at the beginning and at the end of the examination) ($n = 2981$).

246 We then analyzed the rate of antibody response defined as:

247

$$248 \quad RATE = IgG \text{ phase II} - IgG \text{ phase I} = [AU / mL * day]$$
$$249 \quad \Delta days$$

250

251 Positive rates mean increased antibody response, while negative rates indicate reduction of antibody
252 response between the two analyzed time points.

253 For statistical analysis, we performed both a univariate and a multivariate analysis. We applied
254 Wilcoxon-Mann-Whitney statistical non-parametric test to compare the antibody rate distribution
255 between classes of subjects (Table 1 and Table 2).

256 We analyzed the distribution of the rate feature and found a high value of kurtosis (461) around the
257 median value of 0.016, hence to perform a multivariate analysis we restricted the data set to
258 subjects with IgG rates either below the 10th percentile or above the 90th percentile to prevent a
259 bias-variance problem in machine learning models and subjected the data to a linear regression
260 analysis between the training and test data sets, where the target variable (rate of antibodies) was
261 standardized using the Yeo-Johnson method ²³. We then applied Chi-squared statistical test to
262 evaluate differences between classes and the rate thresholds described above (Tables 3 and 4). In
263 order to evaluate the possible interactions between features and the rate of antibody response, we
264 developed a multivariate approach to perform a binary classification between subjects who
265 increased or decreased the level of antibodies. A set of 7 logistic regressions has been applied on
266 data using a bootstrap procedure (samples are drawn with replacement) and the output of each
267 classifier has been averaged by a Bagging classifier to obtain the final output. The selection of
268 hyperparameters of the machine learning model and the feature selection has been performed with a
269 Bayesian optimization approach based on cross validation (4 folds, stratified by outcome). The
270 comparisons shown in Figure 2 and Suppl. Fig. 2 were carried out using one-tailed Wilcoxon
271 matched-pairs signed rank test. A probability value of $P < 0.05$ was considered significant. Data
272 analyses were carried out using GraphPad Prism version 8 and Python version 3.8 with the
273 following libraries: Pandas (version 1.1.4, data wrangling), Scipy (version 1.3.2, statistical
274 analysis), Scikit-Learn (version 0.24.1, LR statistical model).

275

276 **Data and code availability**

277 Humanitas metadata are deposited in Institutional Zenodo community named IRCCS Humanitas
278 Research Hospital & Humanitas University. The dataset and the code are available at the link
279 <https://zenodo.org/record/4528974#.YCONKXnSJaQ> with restricted license however available
280 upon request.

281

282 **References**

283 **Acknowledgments**

284 This work was partially supported by a philanthropic donation by Dolce & Gabbana, by the Italian
285 Ministry of Health (Ricerca corrente) and by Fondazione Humanitas per la Ricerca.

286 We would like to thank all the employees that volunteered to participate to this study, all the nurses
287 and personnel that collected the samples and the laboratory technicians that run the serological and
288 rinopharyngeal tests. We would also like to thank the Humanitas management and staff, Drs
289 Patrizia Meroni, Michele Lagioia and Michele Tedeschi, who warmly supported this study for the
290 safety of the employees.

291

292 **Author contribution**

293 R.L. and L.U.: performed data analysis; C.P.: contributed to data analysis and manuscript writing;
294 G.A. and V.S.: contributed to data analysis; M.T.S.: coordinated and supervised the laboratory
295 analyses; E.A.: coordinated the recruitment and sampling of subjects (project administration) and
296 participated in clinical study design; M.S.: carried out the laboratory analyses; A.M.:
297 conceptualization and funding acquisition; M.R.: conceived the study, analyzed the data and wrote
298 the manuscript.

299

300 **Competing interests**

301 The authors declare no competing interests.

302

303

304 **Tables**

305 Table 1. Demographic distribution of antibody rates.

		counts	min	25 perc	50 perc	75 perc	max	mean	St.Dev.	p_value ^a
Sex	F	1105	-3.39	-0.04	-0.02	0.02	16.32	0.07	0.61	0.0139
	M	448	-0.88	-0.04	-0.02	0	10.37	0.03	0.53	
Age	21-30	300	-3.39	-0.04	-0.02	0.01	4.51	0.03	0.41	0.2644
	31-40	365	-0.92	-0.04	-0.02	0.01	2.26	0.02	0.21	0.2302
	41-50	455	-2.49	-0.04	-0.02	0.03	3.11	0.06	0.37	0.1083
	51-60	309	-0.88	-0.04	-0.01	0.02	16.32	0.1	0.96	0.1442
	60+	124	-0.68	-0.04	-0.02	-0.01	10.37	0.12	0.99	0.0586
BMI ^b	18.5 ≤ BMI < 25	940	-0.92	-0.04	-0.02	0.01	10.37	0.03	0.41	0.3821
	BMI ≥ 30	106	-3.39	-0.05	-0.02	0.14	16.32	0.23	1.69	0.2182
	25 ≤ BMI < 30	347	-0.57	-0.04	-0.02	0.01	3.11	0.05	0.29	0.3933
	BMI < 18.5	73	-0.22	-0.04	-0.02	0.02	1.27	0.05	0.26	0.3959
IgG class phase 1	IgG ≥ 12	613	-3.39	-0.08	0.02	0.23	16.32	0.18	0.92	2.1 E-10
	IgG ≤ 3.8	74	0.01	0.01	0.02	0.03	0.08	0.02	0.01	1.5 E-15
	3.8 < IgG < 12	866	-0.13	-0.03	-0.02	-0.01	0.83	-0.02	0.04	8.0 E-22
Role	Other ^c	200	-0.57	-0.04	-0.02	-0.01	16.32	0.09	1.17	0.0116
	Anesthesiologist	19	-0.83	-0.04	-0.02	0.01	0.09	-0.05	0.2	0.4305 ^b
	Biologist	18	-0.18	-0.05	-0.02	-0.02	0.03	-0.04	0.05	0.0978 ^b
	Surgeon	67	-0.88	-0.05	-0.02	0.07	0.61	0.02	0.21	0.2653
	Physiotherapist	21	-0.12	-0.04	-0.02	0.01	0.35	0.01	0.1	0.4204
	Nurse	398	-3.39	-0.04	-0.02	0.04	3.11	0.08	0.41	0.0581
	Physician	210	-0.92	-0.04	-0.01	0.02	10.37	0.08	0.75	0.0804
	Healthcare Partner Operator	149	-2.49	-0.03	-0.01	0.17	1.55	0.1	0.38	0.0009
	Front office (PARC)	108	-0.32	-0.04	-0.02	0.01	2.55	0.03	0.27	0.2892
	Researcher	50	-1.5	-0.03	-0.02	-0.01	4.51	0.06	0.68	0.1514
	Cleaning service	29	-0.65	-0.03	-0.02	0.03	1.72	0.09	0.41	0.2414
	Transport service	14	-0.39	-0.04	-0.01	0.02	2.22	0.13	0.62	0.4359 ^b
	Staff	188	-0.4	-0.04	-0.02	-0.01	0.98	0	0.15	0.0026
	Student	20	-0.19	-0.03	-0.02	-0.01	0.21	-0.02	0.08	0.3705 ^b
	Laboratory technician	31	-0.17	-0.03	-0.01	-0.01	0.51	0.02	0.15	0.3243
	Radiology technician	31	-0.18	-0.03	-0.02	0.01	1.01	0.04	0.22	0.4002
Site	Other ^c	21	-0.19	-0.04	-0.02	-0.01	2.22	0.08	0.49	0.2080
	Casa di Cura Cellini	51	-0.17	-0.05	-0.03	-0.01	1.27	0.01	0.22	0.0111
	Clinica Fornaca di Sessant	47	-0.4	-0.05	-0.03	0	0.53	0	0.15	0.0833
	Humanitas Castelli	87	-0.28	-0.04	0.02	0.21	3.11	0.24	0.62	4.7 E-05
	Humanitas Gavazzeni	313	-0.88	-0.04	-0.01	0.15	10.37	0.13	0.68	0.0001
	Humanitas Gradenigo	109	-2.49	-0.04	-0.02	-0.01	0.67	-0.01	0.27	0.0586
	Humanitas Mater Domini	105	-0.17	-0.03	-0.02	-0.01	0.63	0	0.1	0.3412
	Humanitas Medical Care	23	-0.19	-0.04	-0.02	-0.01	0.02	-0.03	0.04	0.0969
	Humanitas Rozzano	667	-3.39	-0.04	-0.02	0	16.32	0.04	0.7	0.0338
	Humanitas San Pio X	98	-0.68	-0.03	-0.02	0	2.39	0.04	0.29	0.2968
Humanitas University	32	-0.2	-0.04	-0.02	-0.01	0.19	-0.03	0.08	0.0590	

^a = Wilcoxon-Mann-Whitney test

^b = Some subjects did not indicate their BMI

^c = Refers to volunteers and other professionals that operate in several structures

^d = Minority class is less or equal to 20 (Wilcoxon-Mann-Whitney test is not reliable)

306
307
308
309

310 Table 2. Antibody rates according to symptoms.

311

		counts	min	25 perc	50 perc	75 perc	max	mean	St. Dev.	p_value ^a	
Class symptoms phase 1 (subjects with IgG ≥ 12)	Asymptomatic	91	-1.5	-0.13	-0.05	0.09	2.39	0.04	0.5	0.00003	
	Paucisymptomatic	203	-3.39	-0.08	0.02	0.21	4.51	0.14	0.56	0.32865	
	Symptomatic	319	-2.49	-0.06	0.07	0.28	16.32	0.24	1.16	0.00057	
Symptoms phase 1 (subjects with IgG ≥ 12)	Fever	No	350	-3.39	-0.09	0.01	0.21	4.51	0.13	0.02725	0.02725
		Yes	263	-2.49	-0.06	0.05	0.25	16.32	0.24		
	Low-grade fever	No	481	-3.39	-0.08	0.02	0.23	16.32	0.19	0.17265	0.17265
		Yes	132	-0.39	-0.07	0.05	0.26	2.55	0.14		
	Cough	No	372	-3.39	-0.08	0.01	0.19	16.32	0.14	0.01120	0.01120
		Yes	241	-2.49	-0.07	0.07	0.31	10.37	0.24		
	Sore throat	No	353	-3.39	-0.09	0.02	0.23	16.32	0.19	0.08309	0.08309
		Yes	260	-2.49	-0.07	0.04	0.25	4.51	0.16		
	Muscle pain	No	299	-1.5	-0.1	0	0.2	4.51	0.13	0.00763	0.00763
		Yes	314	-3.39	-0.06	0.06	0.27	16.32	0.22		
	Asthenia	No	341	-3.39	-0.1	0	0.21	16.32	0.17	0.00574	0.00574
		Yes	272	-2.49	-0.06	0.07	0.25	10.37	0.19		
	Anosmia / dysgeusia	No	313	-3.39	-0.12	-0.01	0.2	16.32	0.14	0.00006	0.00006
		Yes	300	-0.86	-0.05	0.06	0.28	10.37	0.22		
	Gastrointestinal symptoms	No	403	-3.39	-0.08	0.03	0.21	10.37	0.17	0.46477	0.46477
		Yes	210	-2.49	-0.08	0.02	0.25	16.32	0.19		
	Conjunctivitis	No	517	-3.39	-0.08	0.02	0.21	16.32	0.18	0.16050	0.16050
		Yes	96	-2.49	-0.07	0.04	0.32	1.72	0.14		
	Dyspnea	No	493	-3.39	-0.08	0.02	0.23	16.32	0.16	0.34700	0.34700
		Yes	120	-2.49	-0.07	0.05	0.26	10.37	0.24		
	Chest pain	No	502	-3.39	-0.08	0.01	0.24	10.37	0.15	0.08088	0.08088
		Yes	111	-0.39	-0.04	0.07	0.22	16.32	0.3		
	Tachycardia	No	512	-3.39	-0.08	0.01	0.21	4.51	0.13	0.02353	0.02353
		Yes	101	-2.49	-0.06	0.08	0.32	16.32	0.4		
Pneumonia	No	568	-3.39	-0.08	0.02	0.22	16.32	0.15	0.18692	0.18692	
	Yes	45	-0.88	-0.06	0.06	0.38	10.37	0.51	1.69		

^a = Wilcoxon-Mann-Whitney test

312
313
314
315
316
317
318
319
320
321
322
323
324
325

326 Table 3. Chi-squared analysis of groups < 10th percentile and > 90th percentile.

		< 10 perc	> 90 perc	p_value
Sex	F	321	340	0.0627
	M	133	105	
Age	21-30	93	83	0.5429
	31-40	108	94	0.3804
	41-50	121	142	0.0970
	51-60	88	98	0.3711
	60+	44	28	0.0793
BMI ^a	18.5 ≤ BMI < 25	267	255	0.6963
	BMI ≥ 30	58	72	0.1750
	25 ≤ BMI < 30	106	93	0.4214
	BMI < 18.5	23	25	0.8261
Role	Other ^b	63	37	0.0109
	Anesthesiologist	6	7	0.9701
	Biologist	5	2	0.4640
	Surgeon	25	21	0.7007
	Physiotherapist	6	7	0.9710
	Nurse	113	132	0.1255
	Physician	56	61	0.6082
	Healthcare Partner Operator	38	64	0.0062
	Front office (PARC)	31	28	0.8494
	Researcher	13	9	0.5485
	Cleaning service	7	9	0.7698
	Transport Service	5	5	0.7747 ^c
	Staff	69	44	0.0214
	Student	5	4	0.9759 ^c
	Laboratory Technician	6	7	0.9701
Radiology Technician	6	8	0.7587	
Site	Other ^b	6	3	0.5223 ^c
	Casa di Cura Cellini	19	8	0.0573
	Clinica Fornaca di Sessant	18	12	0.3828
	Humanitas Castelli	23	47	0.0032
	Humanitas Gavazzeni	97	142	0.0005
	Humanitas Gradenigo	36	22	0.0918
	Humanitas Mater Domini	20	23	0.7041
	Humanitas Medical Care	8	3	0.2379 ^c
	Humanitas Rozzano	190	160	0.0806
	Humanitas San Pio X	27	21	0.5025
Humanitas University	10	4	0.1905 ^c	

^a = Some subjects did not indicate their BMI
^b = Refers to volunteers and other professionals that operate in several structures
^c = Minority class is less or equal to 5 (chi-square test is not reliable)

327
328

329 Table 4. Chi-squared analysis of groups < 10th percentile and > 90th percentile per symptoms.

			<10perc	>90perc	p_value	% Yes<10perc ^a	%Yes>90perc ^a
Symptoms	Fever	No	360	284	3.9E-07	37	63
		Yes	94	161			
	Low-grade fever	No	388	359	0.0678	43	57
		Yes	66	86			
	Cough	No	335	284	0.0016	43	58
		Yes	119	161			
	Sore throat	No	302	271	0.0923	47	53
		Yes	152	174			
	Muscle pain	No	310	246	0.0001	42	58
		Yes	144	199			
	Asthenia	No	340	268	3.7E-06	39	61
		Yes	114	177			
	Anosmia/dysgeusia	No	364	247	4.0E-15	31	69
		Yes	90	198			
	Gastrointestinal symptoms	No	336	313	0.2485	47	53
		Yes	118	132			
	Conjunctivitis	No	400	382	0.3633	46	54
		Yes	54	63			
	Dyspnea	No	405	375	0.0370	41	59
		Yes	49	70			
Chest pain	No	415	367	0.0001	33	67	
	Yes	39	78				
Tachycardia	No	406	371	0.0107	39	61	
	Yes	48	74				
Pneumonia	No	440	420	0.0889	36	64	
	Yes	14	25				
Total of Symptoms in phase I	Asymptomatic	150	80	3.4E-07	65	35	
	Paucisymptomatic	179	158	0.2520	53	47	
	Symptomatic	125	207	5.6E-09	38	62	
Comorbidities	Chronic Obstructive Bronchopneumopathy	No	451	444	0.6305 ^b		
		Yes	3	1			
	Asthma	No	430	412	0.2408		
		Yes	24	33			
	Dyslipidemia	No	413	404	0.9834		
		Yes	41	41			
	Past Neoplasia	No	431	438	0.0063		
		Yes	23	7			
	Hypertension	No	401	409	0.0915		
		Yes	53	36			
	Past Coronaropathies	No	454	443	0.4702 ^b		
		Yes	0	2			
	Atrial Fibrillation	No	450	441	0.7439 ^b		
		Yes	4	4			
	Past Stroke/ TIA	No	452	445	0.4878 ^b		
		Yes	2	0			
	Steatosis/Cyrrosis	No	448	444	0.1359 ^b		
		Yes	6	1			
	Chronic kidney failure	No	453	445	0.9920 ^b		
		Yes	1	0			
Other liver diseases	No	452	441	0.6641 ^b			
	Yes	2	4				
Rheumatological diseases	No	445	431	0.3715			
	Yes	9	14				
Other diseases of the immune system	No	418	409	0.9726			
	Yes	36	36				
Diabetes mellitus	No	452	443	0.6305 ^b			
	Yes	2	2				
Gotta	No	452	445	0.4878 ^b			
	Yes	2	0				

^a = Percentage of subjects with symptoms (Yes) per rate class
^b = Minority class is less or equal to 5 (chi-square test is not reliable)

330

331

332

333 **Figure legends**

334

335 **Figure 1: a**, Dataset < 10th percentile Regression Diagnostic plot of amount of IgG after Yeo-
336 Johnson normalization against residuals of training and test data; **b**, Dataset >90th percentile
337 Regression Diagnostic plot of amount of IgG after Yeo-Johnson normalization against residuals of
338 training and test data; **c**, Barplot with Logistic Regression coefficients for most important features;
339 **d**, Odds ratio of Logistic Regression with confidence intervals (95%) for the most important
340 features.

341

342 **Figure 2:** Anti-Spike S1/S2 IgG plasma levels in asymptomatics (n=61), paucisymptomatics
343 (n=163) and symptomatics (n=275) measured at three different time points (phase 1-3). Each dot
344 corresponds to an individual subject. Log scale on Y axis. The box plots show the interquartile
345 range, the horizontal lines show the median values and the whiskers indicate the minimum-to-
346 maximum range. *P* values were determined using one-tailed Wilcoxon matched-pairs signed rank
347 test.

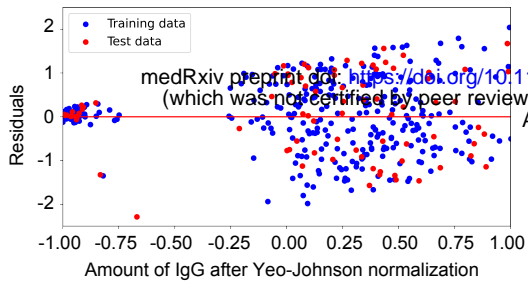
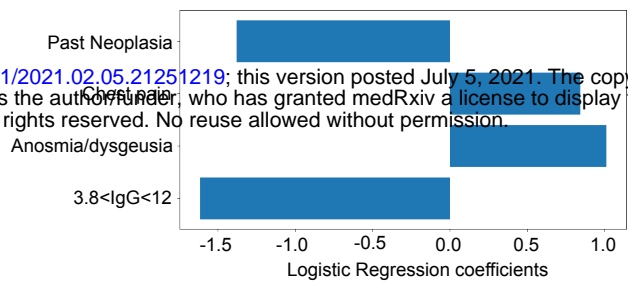
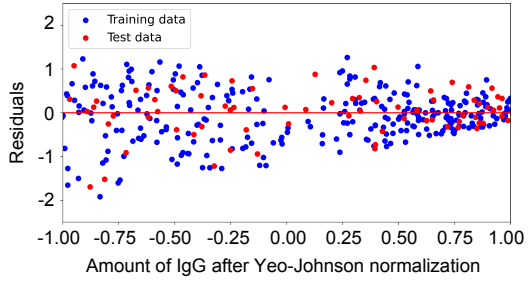
348

349 **References**

350

- 351 1. Dan JM, *et al.* Immunological memory to SARS-CoV-2 assessed for up to 8 months after
352 infection. *Science* **371**, (2021).
- 353 2. Ward H, *et al.* Declining prevalence of antibody positivity to SARS-CoV-2: a community
354 study of 365,000 adults. *medRxiv*, 2020.2010.2026.20219725 (2020).
- 355 3. Long QX, *et al.* Clinical and immunological assessment of asymptomatic SARS-CoV-2
356 infections. *Nat Med* **26**, 1200-1204 (2020).
- 357 4. Sandri MT, *et al.* SARS-CoV-2 serology in 4000 health care and administrative staff across
358 seven sites in Lombardy, Italy. *Sci Rep* **11**, 12312 (2021).
- 359 5. Carfi A, Bernabei R, Landi F, Group fitGAC-P-ACS. Persistent Symptoms in Patients After
360 Acute COVID-19. *JAMA* **324**, 603-605 (2020).
- 361 6. Butowt R, von Bartheld CS. Anosmia in COVID-19: Underlying Mechanisms and
362 Assessment of an Olfactory Route to Brain Infection. *Neuroscientist*, 1073858420956905
363 (2020).
- 364 7. Lechien JR, *et al.* Clinical and epidemiological characteristics of 1420 European patients
365 with mild-to-moderate coronavirus disease 2019. *J Intern Med* **288**, 335-344 (2020).
- 366 8. Kumar N, Bhartiya S, Desai S, Mutha A, Beldar A, Singh T. Seroprevalence of Antibodies
367 Against SARS-CoV-2 Among Health Care Workers in Mumbai, India. *Asia Pac J Public*
368 *Health*, 1010539520977307 (2020).
- 369 9. Pierron D, *et al.* Smell and taste changes are early indicators of the COVID-19 pandemic
370 and political decision effectiveness. *Nat Commun* **11**, 5152 (2020).

- 371 10. Brann DH, *et al.* Non-neuronal expression of SARS-CoV-2 entry genes in the olfactory
372 system suggests mechanisms underlying COVID-19-associated anosmia. *Sci Adv* **6**, (2020).
- 373 11. De Melo GD, *et al.* COVID-19-related anosmia is associated with viral persistence and
374 inflammation in human olfactory epithelium and brain infection in hamsters. *Sci Transl*
375 *Med*, (2021).
- 376 12. Bilinska K, Jakubowska P, Von Bartheld CS, Butowt R. Expression of the SARS-CoV-2
377 Entry Proteins, ACE2 and TMPRSS2, in Cells of the Olfactory Epithelium: Identification of
378 Cell Types and Trends with Age. *ACS Chem Neurosci* **11**, 1555-1562 (2020).
- 379 13. Chen M, *et al.* Elevated ACE-2 expression in the olfactory neuroepithelium: implications
380 for anosmia and upper respiratory SARS-CoV-2 entry and replication. *Eur Respir J* **56**,
381 (2020).
- 382 14. Politi LS, Salsano E, Grimaldi M. Magnetic Resonance Imaging Alteration of the Brain in a
383 Patient With Coronavirus Disease 2019 (COVID-19) and Anosmia. *JAMA Neurol* **77**, 1028-
384 1029 (2020).
- 385 15. Tsvigoulis G, *et al.* Olfactory bulb and mucosa abnormalities in persistent COVID-19-
386 induced anosmia: a magnetic resonance imaging study. *Eur J Neurol*, (2020).
- 387 16. Laurendon T, *et al.* Bilateral transient olfactory bulb edema during COVID-19-related
388 anosmia. *Neurology* **95**, 224-225 (2020).
- 389 17. Yan CH, Prajapati DP, Ritter ML, DeConde AS. Persistent Smell Loss Following
390 Undetectable SARS-CoV-2. *Otolaryngol Head Neck Surg* **163**, 923-925 (2020).
- 391 18. Krammer F, *et al.* Antibody Responses in Seropositive Persons after a Single Dose of
392 SARS-CoV-2 mRNA Vaccine. *N Engl J Med* **384**, 1372-1374 (2021).
- 393 19. Saadat S, *et al.* Binding and Neutralization Antibody Titers After a Single Vaccine Dose in
394 Health Care Workers Previously Infected With SARS-CoV-2. *JAMA* **325**, 1467-1469
395 (2021).
- 396 20. Abu Jabal K, *et al.* Impact of age, ethnicity, sex and prior infection status on
397 immunogenicity following a single dose of the BNT162b2 mRNA COVID-19 vaccine: real-
398 world evidence from healthcare workers, Israel, December 2020 to January 2021. *Euro*
399 *Surveill* **26**, (2021).
- 400 21. Levi R, *et al.* One dose of SARS-CoV-2 vaccine exponentially increases antibodies in
401 recovered individuals with symptomatic COVID-19. *J Clin Invest*, (2021) in press.
- 402 22. Bonelli F, *et al.* Clinical And Analytical Performance Of An Automated Serological Test
403 That Identifies S1/S2 Neutralizing IgG In COVID-19 Patients Semiquantitatively. *J Clin*
404 *Microbiol*, (2020).
- 405 23. Yeo IK, Johnson RA. A new family of power transformations to improve normality or
406 symmetry. *Biometrika* **87**, 954-959 (2000).
- 407
- 408

a**c****b****d**