

## **Toward a geography of community health workers in Niger: a geospatial analysis**

Nicholas P Oliphant<sup>1,2</sup>, Nicolas Ray<sup>3</sup>, Khaled Bensaid<sup>4</sup>, Adama Ouedraogo<sup>5,6</sup>, Asma Yaroh Gali<sup>7,8</sup>, Oumarou Habi<sup>9</sup>, Ibrahim Maazou<sup>9</sup>, Rocco Panciera<sup>10</sup>, Maria Muñoz<sup>11</sup>, Samuel OM Manda<sup>12,13</sup>, Zeynabou Sy<sup>3</sup>, Debra Jackson<sup>14,1</sup>, Tanya Doherty<sup>15,1</sup>

1. University of the Western Cape, School of Public Health, Belleville, Republic of South Africa
2. The Global Fund to Fight AIDS, Tuberculosis, and Malaria, Geneva, Switzerland
3. University of Geneva, GeoHealth group, Institute of Global Health, Faculty of Medicine, University of Geneva & Institute for Environmental Sciences
4. UNICEF Niger, Niamey, Niger (retired)
5. UNICEF Benin, Cotonou, Benin (current)
6. UNICEF Niger, Niamey, Niger (former)
7. Pathfinder International, Niamey, Niger (current)
8. Direction Générale de la Santé de la Reproduction au Ministère de la Santé, Gouvernement du Niger, Niamey, Niger (former)
9. Institut National de la Statistique du Niger, Niamey, Niger
10. UNICEF Headquarters, New York, United States of America
11. UNICEF Eastern and Southern Africa Regional Office, Nairobi, Kenya
12. South African Medical Research Council, Biostatistics Unit, Pretoria, Republic of South Africa
13. University of Pretoria, Department of Statistics, Hatfield, Republic of South Africa
14. London School of Hygiene and Tropical Medicine Centre for Maternal Adolescent Reproductive and Child Health, London, United Kingdom
15. South African Medical Research Council, Health Systems Research Unit, Tygerberg, Republic of South Africa

### **CORRESPONDENCE**

Nicholas P Oliphant  
School of Public Health, University of the Western Cape, Private Bag X17, Belleville 7535, Republic of South Africa  
Email: [npoliphant@gmail.com](mailto:npoliphant@gmail.com)  
Telephone: +41 79 203 0439

### **KEY WORDS**

Geographic information systems, Child health, Malaria, Health systems, Health services research

### **WORD COUNT**

4182

## 1 **ABSTRACT**

### 2 **Background**

3 Little is known about the geography of community health workers (CHWs), their contribution  
4 to geographical accessibility of primary health care (PHC) services, and strategies for  
5 optimizing efficiency of CHW deployment in the context of universal health coverage (UHC).

### 6 **Methods**

7 Using a complete georeferenced census of front-line health facilities and CHWs in Niger and  
8 other high resolution spatial datasets, we modelled travel times to front-line health facilities  
9 and CHWs between 2000-2013, accounting for training, essential commodities, and  
10 maximum population capacity. We estimated additional CHWs needed to maximize  
11 geographical accessibility of the population beyond the reach of existing front-line health  
12 facilities and CHWs. We assessed the efficiency of geographical targeting of the existing  
13 CHW network compared to modelled CHW networks designed to optimize geographical  
14 targeting of the estimated population, under-five deaths, and *plasmodium falciparum* malaria  
15 cases.

### 16 **Results**

17 The percent of the population within 60 minutes walking to the nearest CHW increased from  
18 0.0% to 17.5% between 2000-2013, with 15.5% within 60 minutes walking to the nearest  
19 CHW trained on integrated community case management (iCCM) – making PHC services and  
20 iCCM, specifically, geographically accessible for an estimated 2.3 million and 2.0 million  
21 additional people, respectively. An estimated 10.4 million people (59.0%) remained beyond a  
22 60-minute catchment of front-line health facilities and CHWs. Optimal deployment of 8064  
23 additional CHWs could increase geographic coverage of the estimated total population from  
24 41.5% to 73.6%. Geographical targeting of the existing CHW network was inefficient but  
25 optimized CHW networks could improve efficiency by 55.0%-81.9%, depending on targeting  
26 metric.

### 27 **Interpretations**

28 We provide the first high-resolution maps and estimates of geographical accessibility to  
29 CHWs at national scale, highlighting improvements between 2000-2013 in Niger,  
30 geographies where gaps remained, approaches for improving targeting, and the importance of  
31 putting CHWs on the map to inform planning in the context of UHC.

## **KEY QUESTIONS**

### **What is already known?**

- Previous studies have estimated geographical accessibility (as travel time) to CHWs for subnational areas only<sup>1-4</sup> and have assessed efficiency of the distribution of hospitals in low and middle-income countries.<sup>5</sup>

### **What are the new findings?**

- The percent of the population within 60 minutes walking to the nearest CHW increased from 0.0% to 17.5% between 2000-2013, with 15.5% within 60 minutes walking to the nearest CHW trained on integrated community case management (iCCM) – making PHC services and iCCM, specifically, geographically accessible for an estimated 2.3 million and 2.0 million additional people, respectively.
- An estimated 10.4 million people (59.0%) remained beyond a 60-minute catchment of front-line health facilities and CHWs in 2013, with important variation across subnational geographies, training of CHWs, and availability of essential commodities.
- Optimal deployment of 8064 additional CHWs could increase geographic coverage of the estimated total population from 41.5% to 73.6%, providing physical access to PHC services for an additional 5.7 million people not covered in 2013.
- Optimized CHW networks increased efficiency of geographical targeting compared to the existing CHW network by 55.0%-81.9%, depending on targeting metric.

### **What do the new findings imply?**

- Geographical accessibility to primary health care services, including iCCM, improved in Niger between 2000-2013 with important contributions by CHWs.
- Gaps in geographical accessibility remained as of 2013 but scale-up of the CHW network, using the scale-up approach described in this study, could substantially increase geographical accessibility of PHC services.
- The efficiency of geographical targeting of the existing network of CHWs was suboptimal. The approach for optimizing efficiency of geographical targeting described in this study could be used to improve geographical targeting of CHW deployment in Niger and other countries.
- This work is a first step toward establishing a geography of CHWs in Niger and is a call to action to put CHWs on the map globally to inform health system planning and maximize geographical accessibility, efficiency, and impact of investments in the context of UHC.

## 33 **BACKGROUND**

34 Community health workers (CHWs) can play an important role in improving equitable access  
35 to quality primary health care (PHC) and other services in the context of Universal Health  
36 Coverage (UHC) as front-line service providers and as a trusted bridge between health  
37 systems and communities.<sup>6-8</sup> CHWs typically focus on maternal, newborn and child health  
38 and nutrition, providing a range of preventive, health promotion and curative services –  
39 including single disease or integrated community case management (iCCM).<sup>9</sup> iCCM is the  
40 provision of integrated case management services for two or more childhood illnesses among  
41 children less than five years of age by CHWs, where geographical accessibility (i.e. physical  
42 access) to health facility-based case management services is limited.<sup>10</sup> However, little is  
43 known about the geography of CHWs globally – how many there are, where they are  
44 deployed, their contribution to geographical accessibility to health services, efficiency of their  
45 deployment, and needs for further scale-up.<sup>6,9</sup> In this article, we provide the first description  
46 of the geography of CHWs at national scale in Niger.

## 47 **DATA AND METHODS**

48 In this section we describe the study settings, data, and methods used. Supplementary  
49 Appendix 1 provides a simplified analysis flow (pages 3-5) and additional details on the data  
50 and methods (pages 13-56).

### 51 **Study settings**

52 Niger is a large country (1.267 million sq. kilometers) in the Sahel region of sub-Saharan  
53 Africa,<sup>11</sup> and is ranked among the poorest countries in the world.<sup>12</sup> Infrastructure, including  
54 roads, is underdeveloped<sup>13</sup> and possession of motorized transportation is low.<sup>14</sup> The North is  
55 predominantly bare/sparse desert, and the South is predominantly herbaceous vegetation and  
56 cropland.<sup>15</sup> The climate is Sudanese, with a long dry season from October to May and a short  
57 rainy season from May to September.<sup>11</sup>

58 During the period of focus of this study, 2000-2013, Niger was divided into four political  
59 administrative levels: communes, departments, regions, and national.<sup>11</sup> The health system of  
60 Niger included a public and private sector organized in a decentralized, pyramidal structure  
61 with three administrative levels overseen by the Ministry of Public Health (MOPH). Details  
62 on the health system are provided in Supplementary Appendix 1, pages 22-24. Our analysis  
63 focuses on the first level (periphery): the *Centre de Santé Intégré* (CSI) and *Case de Santé*

64 (CS) networks of the public sector. As of December 2012, there were 856 CSI, offering a  
65 minimum package of services, focused on PHC, referral from and counter-referral to the CS,  
66 and supervision of the CS.<sup>11</sup> CSI were typically staffed by nurses and in certain large  
67 communes by a generalist doctor and midwives and were intended to serve a maximum  
68 population of 5000-15000 inhabitants, depending on population density.<sup>11,16</sup> According to  
69 national norms, CS were intended to be situated 5km beyond a supervising CSI and served a  
70 population of 2500 to 5000.<sup>16</sup> CS provided a minimum package of services, focused on PHC,  
71 including prevention services, health promotion services, and services for reproductive,  
72 maternal, newborn and child health, including iCCM. CS were typically staffed by a cadre of  
73 paid, full-time CHWs called *agent de santé communautaire* (ASC) and/or, in some cases, a  
74 nurse.<sup>17</sup> CS and ASC were scaled-up between 2000-2013 – a period of considerable progress  
75 on under-five mortality.<sup>17,18</sup> As of December 2012, there were 2451 CS.<sup>11</sup> Some CS were  
76 supported by one or more volunteer CHWs called *relais communautaires* (RC), providing  
77 health promotion and prevention interventions in the communities within the catchment area  
78 (typically a 5km radius) of the CS.<sup>11,16</sup> The MOPH in Niger plans to scale-up RC – some  
79 targeted to communities beyond 5km of CS or CSI to provide a standard package of  
80 preventive, promotive and curative services, including iCCM.<sup>19</sup>

## 81 **Data**

82 We obtained spatial datasets for the following inputs: administrative boundaries (levels 0-3),<sup>20</sup>  
83 health service delivery networks (CSI, CS and ASC),<sup>20</sup> digital elevation model,<sup>22</sup> land cover,<sup>15</sup>  
84 roads,<sup>23</sup> rivers and other water bodies (treated as barriers to movement where no road  
85 crossed),<sup>24</sup> travel scenarios, modelled estimates for population counts for 2000-2013<sup>25</sup> and  
86 2015,<sup>26</sup> modelled estimates for the annual mean under-five mortality rate in 2013,<sup>27</sup> and  
87 modelled estimates for the annual mean incidence of *Plasmodium falciparum* (*Pf*) malaria  
88 among all ages (0-99 years) in 2013.<sup>28</sup> We prepared the input datasets in a coordinate  
89 reference system for Niger at 100m x 100m resolution for our analysis of accessibility  
90 coverage and 1km x 1km for our analysis of geographic coverage, targeting and scale-up.  
91 Further details are in Supplementary Appendix 1 (pages 21-33).

92 We prepared travel speed tables for two travel scenarios: 1) walking in dry conditions and 2)  
93 walking to the nearest road and then using motorized transportation (assumed to be  
94 immediately available) in dry conditions. We set travel speeds by travel scenario for each land  
95 cover class and road class. Travel speeds were adapted from previous studies and experience  
96 in Niger and broader sub-Saharan Africa.<sup>29,30</sup>

## 97 **Assessing geographical accessibility**

98 We assessed geographical accessibility through two measures: accessibility coverage and  
99 geographic coverage.

100 We defined accessibility coverage as the estimated percentage of people within a given travel  
101 time to the nearest health service delivery location of a given health service delivery network,  
102 accounting for travel speeds of different modes of transportation over different land cover  
103 classes and slope, with the direction of travel toward the health service delivery location.<sup>29</sup>

104 We estimated accessibility coverage at 100m x 100m resolution for the CSI, CS, and CS-ASC  
105 (includes CS with or without ASC and the small number of ASC sites not within a CS)  
106 networks in 2013 – and for the ASC network by gender, year of deployment (2000-2013),  
107 training, and availability of essential commodities – using 30-minute and 60-minute cutoffs  
108 for administrative levels 0-3 and the two travel scenarios. We used 30-minute and 60-minute  
109 cutoffs as previous analyses have shown careseeking decays as a function of travel time after  
110 these cutoffs<sup>31</sup> and they are clinically relevant (e.g., for prompt treatment of severe illness).<sup>32</sup>

111 The analysis was constrained to national borders but allowed for travel across subnational  
112 administrative boundaries. We used the “geographic accessibility” module within AccessMod  
113 5 (v5.6.48)<sup>29</sup> to calculate travel time layers and the “zonal statistics” module to calculate the  
114 zonal statistics for each travel time layer by administrative level.

115 We defined geographic coverage as the theoretical catchment area of a health service delivery  
116 location, within a maximum travel time, accounting for the mode of transportation and the  
117 maximum population coverage capacity of the type of health service delivery location.<sup>29</sup> We  
118 used the "geographic coverage" module of AccessMod 5 (v5.6.48)<sup>29</sup> to estimate geographic  
119 coverage for the CSI and CS-ASC networks in 2013 at 1km x 1km resolution for the two  
120 travel scenarios. The maximum travel time was set at 60 minutes. The maximum population  
121 capacity was set at 10000 for CSI and 2500 for CS-ASC based on norms of the MOPH of  
122 Niger.<sup>18</sup> The maximum extent of a catchment was therefore delimited by the maximum travel  
123 time of 60 minutes except in cases where the estimated population in the catchment exceeded  
124 the maximum population capacity of the health service delivery location – in which case the  
125 extent of the catchment was smaller than the maximum travel time and was defined by the  
126 area containing the estimated population, up to the maximum population capacity.

## 127 **Assessing geographic coverage of a hypothetical scale-up network of RC**

128 To estimate the number of RC needed to maximize geographical accessibility of the  
129 population beyond the geographic coverage of the existing CSI and CS-ASC networks, we  
130 simulated a hypothetical network of RC in grid cells with at least 250 people in 2013 located  
131 beyond the geographic coverage of the existing CSI and CS-ASC networks at 1km x 1km  
132 resolution, using a ratio of 1 RC per 1000 population (with a minimum threshold of 250  
133 people to allocate 1 RC). We conducted a geographic coverage analysis at 1km x 1km  
134 resolution to estimate the percent of the estimated residual population that could be covered  
135 by the hypothetical RC network, within a maximum travel time of 60 min walking to the  
136 nearest RC and maximum population capacity of 1000 for each RC.

### 137 **Assessing efficiency of geographical targeting**

138 We assessed the efficiency of geographical targeting of the CS-ASC network, using the  
139 concept of technical efficiency. We defined technical efficiency as the maximization of a  
140 health outcome (geographic coverage) for a given set of inputs (the number of CS-ASC).<sup>33</sup>  
141 We used the estimated population, under-five deaths, and *Pf* malaria cases beyond the  
142 geographic coverage (60 minutes walking) of the CSI network in 2013 – hereafter called the  
143 estimated residual population, under-five deaths, and *Pf* malaria cases, respectively – as the  
144 “populations” to target in our geographical targeting analysis. We assessed the efficiency of  
145 geographical targeting of the existing CS-ASC network with three metrics a) geographic  
146 coverage of the estimated residual population b) geographic coverage of the estimated  
147 residual under-five deaths and c) geographic coverage of the estimated residual *Pf* malaria  
148 cases among all ages beyond the catchment of the CSI network in 2013 at 1km x 1km  
149 resolution compared to three hypothetical CS-ASC networks designed to optimize metrics a-  
150 c. For comparison with the existing CS-ASC network (n=2550) we restricted the hypothetical  
151 networks to the 2550 sites that maximized geographic coverage of the targeted population.  
152 We assessed the potential effect of uncertainty of the estimates for under-five deaths and *Pf*  
153 malaria cases among all ages on interpretation of our targeting results (see Supplementary  
154 Appendix 1, pages 54 and 57, and Supplementary Appendix 7).

### 155 **Patient and public involvement statement**

156 We did not involve patients or the public in this study.

## 157 **RESULTS**

### 158 **Accessibility coverage**



159 Accessibility coverage of the ASC network increased from 0.0% to 17.5% between 2000-  
 160 2013, with large variation at subnational levels, given a 60-minute cutoff and walking  
 161 scenario (Table 1, Figure 1, Supplementary Appendix 2). Video 1 and video 2 show the  
 162 evolution of accessibility coverage of the ASC network between 2000-2013 by mode of  
 163 transportation.

164 **FIGURE 1**

165 Accessibility coverage of the ASC network varied by gender of the ASC and training on  
 166 specific interventions (Table 1, Supplementary Figure 2A-L on page 9 of Supplementary  
 167 Appendix 1). Accessibility coverage of the ASC network trained on iCCM was 15.5% in  
 168 2013, given a 60-minute cutoff and walking scenario (Table 1, Figure 2D). The estimated  
 169 additional contribution of the ASC network and ASC network trained on iCCM to  
 170 accessibility coverage beyond the accessibility coverage of the existing CSI and CS (without  
 171 ASC) networks combined, given a 60-minute cutoff and walking scenario, was 12.8% and  
 172 11.0%, covering an estimated 2.3 million and 2.0 million additional people, respectively  
 173 (Table 1).

174 **Table 1.** Accessibility coverage of the front-line health facility and ASC networks

	Walking				Walking + motorized transportation			
	Covered 30 min (no.)	Covered 60 min (no.)	Covered 30 min (%)	Covered 60 min (%)	Covered 30 min (no.)	Covered 60 min (no.)	Covered 30 min (%)	Covered 60 min (%)
CSI + CS-ASC	7555209	9702395	41.8%	53.7%	10049232	11847974	55.6%	65.5%
CSI	4454595	5617195	24.6%	31.1%	7499712	9375295	41.5%	51.9%
CS-ASC	3724166	5516196	20.6%	30.5%	8552971	10917747	47.3%	60.4%
CS with nurse or ASC	2656798	3877172	14.7%	21.4%	7234714	9781239	40.0%	54.1%
ASC	1930318	3156228	10.7%	17.5%	6177540	9228791	34.2%	51.0%
Female ASC	624548	1115902	3.5%	6.2%	3333890	6228099	18.4%	34.4%
Male ASC	1403743	2352088	7.8%	13.0%	4710547	8290546	26.1%	45.9%
ASC trained on iCCM	1681118	2807629	9.3%	15.5%	5789678	8866791	32.0%	49.0%
ASC trained on promotion of key family practices	257252	502715	1.4%	2.8%	1350665	3117135	7.5%	17.2%
ASC trained on promotion of WASH	285021	459284	1.6%	2.5%	1761924	3431730	9.7%	19.0%
ASC trained on promotion of maternal and child nutrition	942742	1531534	5.2%	8.5%	3708632	6386347	20.5%	35.3%
ASC trained on promotion of childhood immunization	792972	1304697	4.4%	7.2%	3367442	5801114	18.6%	32.1%
ASC trained on prevention of HIV and STIs	422425	838176	2.3%	4.6%	2385540	4964508	13.2%	27.5%
ASC trained on family	257252	502715	1.4%	2.8%	1350665	3117135	7.5%	17.2%



planning								
ASC trained on promotion of maternal health	420513	614037	2.3%	3.4%	1836845	4098785	10.2%	22.7%
ASC trained on AMTSL	22893	30567	0.1%	0.2%	58142	270105	0.3%	1.5%
ASC trained on essential newborn care	171317	309649	0.9%	1.7%	1161710	2349625	6.4%	13.0%
ASC trained on HMIS	541061	1009626	3.0%	5.6%	2473387	4144195	13.7%	22.9%
Additional contribution ASC	1598393	2312056	8.8%	12.8%	3333890	6228099	18.4%	34.4%
Additional contribution ASC trained on iCCM	1365053	1997636	7.5%	11.0%	860150	1343604	4.8%	7.4%
CS with no stockout of iCCM commodities lasting longer than 7 days	1083373	1697021	6.0%	9.4%	4436870	7082669	24.5%	39.2%
CS with nurse or ASC and no stockout of any iCCM commodities lasting longer than 7 days	1004259	1588442	5.6%	8.8%	4281866	6901898	23.7%	38.2%
CS with nurse or ASC and no stockout of RDT and ACT (AL) lasting longer than 7 days	1611911	2433672	8.9%	13.5%	5550109	8396522	30.7%	46.4%
CS with nurse or ASC and no stockout of first-line antibiotic (Cotrimoxazole) lasting longer than 7 days	1840249	2818994	10.2%	15.6%	6068363	8554497	33.6%	47.3%
CS with nurse or ASC and no stockout of ORS and zinc lasting longer than 7 days	1785901	2670944	9.9%	14.8%	5779524	8763644	32.0%	48.5%
CS with nurse or ASC and no stockout of RUTF lasting longer than 7 days	2294824	3377406	12.7%	18.7%	6775940	9190259	37.5%	50.8%

175

176 Accessibility coverage in 2013, given a 60-minute cutoff and walking scenario, was 31.1%  
 177 for the CSI network, 30.5% for the CS-ASC network, 21.4% for the CS network with a nurse  
 178 or ASC, and 53.7% for the combined CSI + CS-ASC network (Table 1 and Figure 2A-D). An  
 179 estimated 8.3 million people (58.2%) remained beyond 60 minutes walking to the nearest  
 180 front-line health facility or ASC, without considering the maximum population capacity of  
 181 these networks. Accessibility coverage of the CS network was lower when we considered  
 182 availability of trained human resources (nurse or ASC) and essential commodities (Table 1  
 183 and Supplementary Figure 3A-G, page 7 of Supplementary Appendix 1). Accessibility  
 184 coverage of all health service delivery networks was higher when considering the walking  
 185 plus motorized transportation travel scenario (Table 1 and Supplementary Figure 4A-F, page

186 10 of Supplementary Appendix 1). We provide detailed results in Supplementary Appendix 2,  
187 tab “Detailed\_Results”.

## 188 **FIGURE 2**

### 189 **Geographic coverage**

190 Geographic coverage of the estimated total population in 2013 by the CSI network was  
191 22.1%, assuming a walking scenario with a 60-minute catchment and maximum population  
192 capacity of 10000 per CSI (Figure 3 and Supplementary Appendix 3, tab “Summary”). Over  
193 one-third (347) of the CSI realized less than 30% of their maximum population capacity,  
194 indicating inefficiency (Supplementary Appendix 3, tab “Summary”).

195 Geographic coverage of the total estimated population in 2013 by the CS-ASC network was  
196 19.4%, assuming a walking scenario with a 60-minute catchment and maximum population  
197 capacity of 2500 per CS-ASC (Figure 3, Supplementary Figure 3). Over one-third (830) of the  
198 CS-ASC realized less than 30% of their maximum population capacity, indicating  
199 inefficiency (Figure 3 and Supplementary Appendix 3, tab “Summary”). Geographic coverage  
200 of the estimated residual population beyond the geographic coverage of the CSI network in  
201 2013 by the CS-ASC network was 24.9%, providing an estimated 3.4 million additional  
202 people with physical access to PHC services, with important variation by region  
203 (Supplementary Appendix 3, tab “Summary” and Supplementary Figure 6).

### 204 **Geographic coverage of a hypothetical scale-up network of RC**

205 A hypothetical network of 8064 RC with a maximum population capacity of 1000 people per  
206 RC, targeting cells with at least 250 people located beyond the geographic coverage of the  
207 existing CSI and CS-ASC networks, could cover 54.9% of this estimated residual population  
208 – providing physical access to PHC services for an estimated 5.7 million additional people in  
209 2013 (Figure 5 and Supplementary Appendix 6, tab “Summary”). Geographic coverage of the  
210 estimated total population would increase from 41.5% covered by the existing CSI and CS-  
211 ASC networks to 73.6% by the combined CSI, CS-ASC, and hypothetical RC networks in  
212 2013 (Supplementary Appendix 4, tab “Summary”).

## 213 **FIGURE 3**

### 214 **Efficiency of geographical targeting**

215 Geographic coverage of the estimated residual population beyond the geographic coverage of  
216 the existing CSI network was 40.2% by the hypothetical CS-ASC network compared to  
217 24.9% by the existing CS-ASC network, covering an estimated 2.1 million additional people  
218 – a 61.9% gain in efficiency (Figure 4 and Supplementary Appendix 5, tab  
219 “Comparison\_Population”). Geographic coverage of the estimated residual under-five deaths  
220 beyond the geographic coverage of the existing CSI network was 58.0% by the hypothetical  
221 CS-ASC network compared to 37.5% by the existing CS-ASC network, covering an estimated  
222 73000 under-five deaths not otherwise covered – a 55.0% gain in efficiency (Figure 4 and  
223 Supplementary Appendix 5, tab “Comparison\_U5deaths”). Geographic coverage of the  
224 estimated residual *Pf* malaria cases (all ages) beyond the geographic coverage of the existing  
225 CSI network was 60.3% by the hypothetical CS-ASC network compared to 33.1% by the  
226 existing CS-ASC network, covering an estimated 1.6 million *Pf* malaria cases not otherwise  
227 covered – a 81.9% gain in efficiency (Figure 4 and Supplementary Appendix 5, tab  
228 “Comparison\_Malaria”). Our uncertainty analysis for the efficiency of geographical targeting  
229 indicates bins/groups of CS-ASC catchments with relatively higher efficiency geographical  
230 targeting could be distinguished from bins/groups of CS-ASC catchments with relatively  
231 lower efficiency of geographical targeting (Supplementary Appendix 6).

232

## FIGURE 4

## 233 DISCUSSION

### 234 Summary

235 Our results indicate that geographical accessibility of PHC services improved in Niger  
236 between 2000-2013, with an important contribution of ASCs – making PHC services  
237 physically accessible for an estimated 2.3 million additional people, including an estimated  
238 2.0 million additional people with physical access to iCCM. Despite this improvement,  
239 geographical accessibility of PHC services remained inadequate as of 2013, with important  
240 variation across subnational geographies, training of CHWs, and availability of essential  
241 commodities. Rational scale-up of the CHW network, using approaches to optimize  
242 deployment as described here, could increase geographic coverage of PHC services from  
243 41.5% to 73.6%, covering an estimated 5.7 million additional people without adequate  
244 physical access to PHC services in 2013. The efficiency of geographical targeting of health  
245 facilities and CHWs was suboptimal relative to the distribution of the estimated population,

246 under-five deaths and malaria burden – but could be improved through the targeting approach  
247 used in this study.

## 248 **Strengths and limitations**

249 To our knowledge, this study provides the first estimates and high-resolution maps of  
250 geographical accessibility to CHWs at national scale for any country. We used a bespoke  
251 modelling approach with a complete national georeferenced census of front-line health  
252 facilities and CHWs in Niger, other high resolution spatial datasets, and realistic assumptions.

253 Our estimates of accessibility coverage are lower than those from Weiss and colleagues<sup>34</sup>  
254 which estimated 61.8% and 80.7% of the population in Niger was within 60 minutes of the  
255 nearest health facility in 2020 based on a walking scenario and motorized transportation  
256 scenario, respectively. Paradoxically the health facility dataset used in Weiss and colleagues<sup>34</sup>  
257 included 568 fewer health service delivery locations (n=2821 in Weiss and colleagues<sup>34</sup> for  
258 2020, n=3389 in our model for 2013). The higher estimates of accessibility coverage in Weiss  
259 and colleagues<sup>34</sup> may be explained by three factors. First, travel speeds for motorized  
260 transportation used by Weiss and colleagues<sup>34</sup> are higher than those used in our model.  
261 Second, the walking model by Weiss and colleagues<sup>34</sup> assumes a travel speed of 5km per hour  
262 across all landcover classes, whereas our model varies walking travel speed from 5km per  
263 hour to 0 km per hour (impassable), according to land cover class and is based on realistic  
264 estimates of travel speeds from previous studies in Niger and the region.<sup>29,30</sup> Third, Weiss and  
265 colleagues<sup>34</sup> allowed for swimming across water barriers, whereas we did not but we allowed  
266 travel over road bridges. Another study, Blanford and colleagues,<sup>30</sup> found that 39.1% of the  
267 population were within 60 minutes walking of the nearest health facility in 2009. However,  
268 their model used an incomplete network of hospitals and CSI (n=504) dating from 1995. We  
269 consider our results, while imperfect, to be more useful for national planning in Niger than  
270 results reported in Weiss and colleagues<sup>34</sup> and Blanford and colleagues<sup>31</sup> as our results were  
271 based on a bespoke model for Niger, with a more complete dataset on health service delivery  
272 locations and more realistic, contextualized travel speeds.

273 Our scale-up analysis provides a useful roadmap for the MOPH to consider as it plans to  
274 scale-up the RC network to fill gaps in physical access to PHC services, for example, by  
275 identifying optimal RC locations and enabling the prioritization of bins/groups of RC (the first  
276 500 RC, next 500 RC and so on) that would maximize geographical accessibility, allowing a  
277 phased approach to scale-up. Lastly, our analysis highlights important inefficiencies in

278 geographical targeting of the existing CS-ASC network relative to estimates of the spatial  
279 distribution of the population and underlying burden of under-five mortality and *Pf* malaria,  
280 suggests alternatives to guide fine-tuning of the network, and provides an approach that could  
281 be used in future planning efforts to maximize efficiency of geographical targeting.

282 We acknowledge that, in addition to physical accessibility, it is important to consider social  
283 and economic barriers to care seeking (e.g. social norms, intrahousehold power dynamics,  
284 costs of transportation, opportunity costs of travel time, costs of services and commodities)  
285 which may influence access to and use of health services.<sup>35</sup> It is also important to consider the  
286 quality of health services and the potential for bypassing.<sup>36,37</sup> Lastly, predominate modes of  
287 transportation may vary by socioeconomic status and geography<sup>38</sup> and they may change in  
288 response to contextual factors (e.g. the lockdowns due to COVID-19 in 2020).

289 There are important limitations to this study. First, we did not include secondary or tertiary  
290 facilities or outreach/mobile sites. We focused on the question of physical access to CHWs  
291 and first level health facilities, rather than secondary or tertiary health facilities and  
292 permanent, fixed service locations rather than periodic, mobile services. Moreover, our  
293 service delivery location dataset is more complete than datasets publicly available at the time  
294 of our analysis in 2020.<sup>39</sup> Second, our analysis is limited by the completeness and quality of  
295 the publicly available data on road and river networks. We acknowledge that more complete  
296 and/or accurate government or proprietary road and river network data may be available. For  
297 the river network, we acknowledge that some rivers, streams, and other waterways may not be  
298 perennial barriers to movement. We attempted to mitigate this limitation by allowing major  
299 road classes (motorway, trunk, primary, secondary, and tertiary) to cross rivers/streams and  
300 by incorporating data on the hydrographic network from the high-resolution Copernicus land  
301 cover layer<sup>15</sup> in our merged land cover layer. We also conducted a sensitivity analysis using  
302 only waterways classified as “rivers” in the rivers input layer as barriers to movement and  
303 found this made no important difference to the results (Supplementary Appendix 2, tab  
304 Sensitivity\_analysis”). Third, our accessibility coverage, geographic coverage, and targeting  
305 analyses do not account for uncertainty of the estimates of population. Previous analyses of  
306 accessibility coverage and geographic coverage have not uncounted for uncertainty of this  
307 kind, but we acknowledge this is an important limitation and area for improving future  
308 modelling. Fourth, our analysis does not account for national parks or other “no-go” zones  
309 (e.g., military bases) due to lack of access to the geography of these objects for 2013. Fifth,  
310 our travel speeds were based on similar analyses for Niger and other countries in sub-Saharan

311 Africa<sup>29,30</sup> but could be improved through a country-led consensus-building process with  
312 national experts to derive subnational travel speeds and validate other data inputs. Our travel  
313 speeds do not account for differences in travel speeds by season<sup>30</sup> which may be relevant in  
314 the Sahel, possible group differences (e.g., pregnant women, people with illness, and  
315 caregivers carrying sick children may walk slower), river transportation, and our walking plus  
316 motorized transportation scenario assumes immediate access to a vehicle once a road is  
317 reached and does not account for road traffic or factors impacting road traffic (e.g. traffic  
318 lights). Sixth, our analysis does not account for the possibility of accessing health service  
319 delivery locations across national boundaries, an important consideration for cross-border and  
320 migrant populations. Seventh, the modelled population counts for 2000-2012 use the HRSL  
321 population settlement footprint from 2015,<sup>26</sup> which may not accurately reflect the population  
322 settlement footprint for the early 2000s. Lastly, the accuracy of the modelled estimates of  
323 under-five mortality rates<sup>27</sup> and *Pf* malaria incidence<sup>28</sup> used in our targeting analysis is  
324 unknown. Despite this limitation, results from our uncertainty analysis indicated that our  
325 targeting approach could be used to confidently identify bins/groups of health service delivery  
326 catchment areas that are relatively more efficient at geographical targeting than other  
327 bins/groups – and that this information could be used in planning to enhance scale-up and  
328 geographical targeting of CHWs.

329 We understand that rational decisions on scale-up and targeting of CHWs, like with health  
330 facilities, cannot be addressed purely through modelling, as there are many factors involved in  
331 the political economy of health system planning and decision-making.<sup>40,41</sup> Nonetheless, we  
332 think our results provide novel insights for policy makers, practitioners and researchers and  
333 future efforts can build on and refine this work through collaborative, country-led processes.

## 334 **CONCLUSION**

335 Geographical accessibility of PHC services improved in Niger between 2000-2013, with  
336 important contributions from ASCs, providing an estimated 2.3 million additional people with  
337 physical access to PHC services – including 2.0 million additional people with physical  
338 access to iCCM. However, as of 2013, gaps in geographical accessibility remained and  
339 efficiency of geographical targeting of ASCs was suboptimal. Rational scale-up and  
340 geographical targeting of the RC network, using approaches to optimize deployment as  
341 described here, could make an important contribution toward increasing geographical  
342 accessibility to PHC services in Niger. These approaches could be adapted to meet planning  
343 needs in other contexts. As Niger works toward UHC, developing a geography of the health

344 system – as part of a broader spatial data infrastructure<sup>42</sup> – will be critical. Developing a  
345 geography of CHWs within this broader context will be equally important for these purposes  
346 and for maximizing efficiency, impact, and equity of investments in quality PHC within the  
347 context of UHC. This study is one step toward a geography of CHWs in Niger and a call to  
348 action for establishing a geography of CHWs globally.

#### 349 **ACKNOWLEDGEMENTS**

350 The views expressed in this article are the authors' views do not necessarily represent the  
351 views, positions, or policies of the institutions with which the authors are affiliated. This work  
352 would not have been possible without the efforts of the many people that contributed to the  
353 first georeferenced census of CSI, CS and ASC led by the INS, the Ministry of Public Health  
354 of Niger, and UNICEF in 2013.

#### 355 **FOOTNOTES**

356 **Contributors:** NPO was responsible for the study conceptualization, methodology, data  
357 curation, and writing the draft manuscript. OH, IM, KB, AYG, NPO, and NR collected data  
358 or provided feedback on data. NPO, NR and ZY conducted the formal analysis and were  
359 responsible for data visualization. NPO, NR and TD verified the underlying data. TD, DJ, and  
360 NR provided supervision and overall guidance. All authors contributed to reviewing and  
361 editing the manuscript.

362 **Funding:** No funding was provided.

363 **Competing interests:** Mr. Oliphant reports grants (salary support) from the Bill and Melinda  
364 Gates Foundation (BMGF), outside the submitted work. Other co-authors declare no  
365 competing interests.

366 **Patient consent for publication:** Not required.

367 **Provenance and peer review:** Not commissioned; externally peer reviewed.

368 **Data availability statement:** Data are available on a public, open access repository under the  
369 Creative Commons Attribution 4.0 Unported (CC BY 4.0) license, which permits others to  
370 copy, redistribute, remix, transform and build upon this work for any purpose, provided the  
371 original work is properly cited, a link to the license is given, and indication of whether  
372 changes were made. See: <https://creativecommons.org/licenses/by/4.0/>. Supplementary  
373 Appendices 2-6, Videos 1-2, and all model outputs are available in Supplementary Appendix



374 1b at <https://doi.org/10.5281/zenodo.4482969>. All model inputs (except existing service  
375 delivery locations) are available in Supplementary Appendix 1c at  
376 <https://doi.org/10.6084/m9.figshare.13536779.v5>. Health service delivery location data are  
377 only available through data sharing agreements with UNICEF and the Ministry of Public  
378 Health of Niger.

## 379 REFERENCES

- 380 1. Pratt A, Dale M, Olivi E, Miller J. Spatial distribution and deployment of community-  
381 based distributors implementing integrated community case management (iCCM):  
382 Geographic information system (GIS) mapping study in three South Sudan states.  
383 *Journal of Global Health* 2014;4(2): 020402.  
384 <https://doi.org/10.7189/jogh.04.020402>
- 385 2. Cherkesly M, Rancourt MÈ, Smilowitz KR. Community Healthcare Network in  
386 Underserved Areas: Design, Mathematical Models, and Analysis. *Prod Oper Manag*  
387 2019;28:1716–1734.  
388 <https://doi.org/10.1111/poms.13008>
- 389 3. Ihantamalala FA, Herbreteau V, Révillion C, Randriamihaja M, Commins J,  
390 Andréambelason T, et al. Improving geographical accessibility modeling for  
391 operational use by local health actors. *International Journal of Health Geographics*  
392 2020;19(27).  
393 <https://doi.org/10.1186/s12942-020-00220-6>
- 394 4. Brunie A, MacCarthy J, Mulligan B, Ribaira Y, et al. Practical implications of policy  
395 guidelines: A GIS model of the deployment of community health volunteers in  
396 Madagascar. *Global Health: Science and Practice* 2020;8(3):466.  
397 <https://doi.org/10.9745/GHSP-D-19-00421>
- 398 5. Wong KLM, Brady OJ, Campbell OMR, Jarvis CI, Pembe A, Gomez GB, et al.  
399 Current realities versus theoretical optima: quantifying efficiency and sociospatial  
400 equity of travel time to hospitals in low-income and middle-income countries. *BMJ*  
401 *Global Health* 2019;4:e001552.  
402 <https://doi.org/10.1136/bmjgh-2019-001552>
- 403 6. Cometto G, Ford N, Pfaffman-Zambruni J, Akl EA, Lehmann U, McPake P, et al.  
404 Health policy and system support to optimise community health worker programmes:

- 405 an abridged WHO guideline. *The Lancet Global Health* 2018;6(12):e1397–e1404.  
406 [https://doi.org/10.1016/S2214-109X\(18\)30482-0](https://doi.org/10.1016/S2214-109X(18)30482-0)
- 407 7. Haines A, Sanders D, Lehmann U, Rowe A, Lawn JE, Jan S. Achieving child survival  
408 goals: potential contribution of community health workers. *Lancet* 2007;  
409 369(9579):2121–2131.  
410 [https://doi.org/10.1016/S0140-6736\(07\)60325-0](https://doi.org/10.1016/S0140-6736(07)60325-0)
- 411 8. Kok MC, Ormel H, Broerse JEW, Kane S, Namakhoma I, Otiso L, et al. Optimising  
412 the benefits of community health workers’ unique position between communities and  
413 the health sector: A comparative analysis of factors shaping relationships in four  
414 countries. *Global Public Health* 2017;12(11):1404–1432.  
415 <https://doi.org/10.1080/17441692.2016.1174722>
- 416 9. Boschi-Pinto C, Labadie G, Ramachandran D, Oliphant N, Dalglish SL, Aboubaker S,  
417 et al. Global implementation survey of Integrated Management of Childhood Illness  
418 (IMCI): 20 years on. *BMJ Open*;8(7):e019079.  
419 <https://doi.org/10.1136/bmjopen-2017-019079>
- 420 10. World Health Organization, UNICEF. 2012. WHO/UNICEF Joint Statement:  
421 Integrated Community Case Management (iCCM): An Equity-Focused Strategy to  
422 Improve Access to Essential Treatment Services for Children. Geneva and New York:  
423 WHO and UNICEF.  
424 [https://www.who.int/maternal\\_child\\_adolescent/documents/statement\\_child\\_services\\_  
425 access\\_whounicef.pdf](https://www.who.int/maternal_child_adolescent/documents/statement_child_services_access_whounicef.pdf)
- 426 11. Ministère de la Santé Publique. 2013. Annuaire des statistiques sanitaires du Niger,  
427 Année 2012. Niamey, Niger: Ministère de la Santé Publique, Secrétariat Général,  
428 Direction des Statistiques.
- 429 12. United Nations Development Programme. 2019. Human Development Report 2019.  
430 Beyond income, beyond averages, beyond today: Inequalities in human development  
431 in the 21st century. New York, NY: UNDP.  
432 <http://hdr.undp.org/sites/default/files/hdr2019.pdf>
- 433 13. World Food Programme. Logistics Capacity Assessment: 2 Niger Logistics  
434 Infrastructure. December 13, 2013.

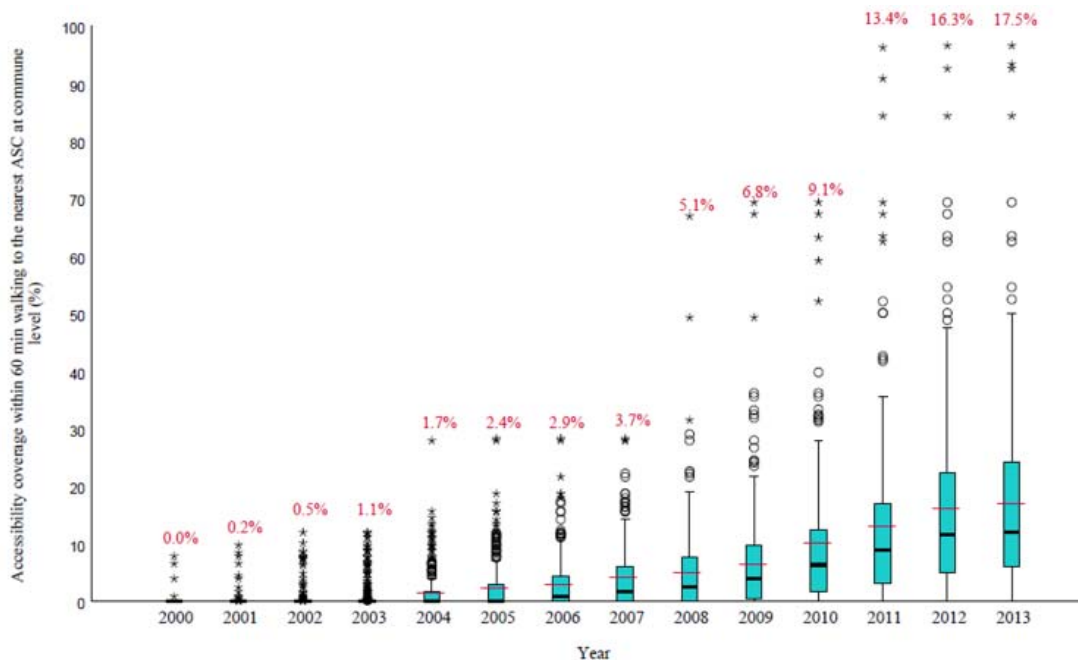
- 435 <https://dlca.logcluster.org/display/public/DLCA/2+Niger+Logistics+Infrastructure>  
436 Date accessed: November 11, 2020.
- 437 14. Institut National de la Statistique (INS) du Niger, ICF International. 2013. Niger  
438 Enquête Démographique et de Santé et à Indicateurs Multiples (EDSN-MICS IV)  
439 2012. Calverton, Maryland, USA: INS and ICF International.  
440 <https://dhsprogram.com/pubs/pdf/FR277/FR277.pdf>
- 441 15. Buchhorn M, Smets B, Bertels L, De Roo B, Lesiv M, Tsendbazar N-E, et al.  
442 Copernicus Global Land Service: Land Cover 100M: collection 3:epoch 2015:Globe  
443 2020.  
444 <https://doi.org/10.5281/zenodo.3939038>  
445 Date accessed: October 4, 2017
- 446 16. Ministère de la Santé Publique et de la Lutte contre les Endémies. 2006. Normes et  
447 standards des infrastructures, équipements et personnel du système de santé. Niamey,  
448 Niger: Ministère de la Santé Publique et de la Lutte contre les Endémies.
- 449 17. Besada D, Kerber K, Leon N, Sanders D, Daviaud E, Rohde S, et al. Niger's Child  
450 Survival Success, Contributing Factors and Challenges to Sustainability: A  
451 Retrospective Analysis. PLOS ONE 2016;11(1):e0146945  
452 <https://doi.org/10.1371/journal.pone.0146945>
- 453 18. Amouzou A, Habi O, Bensaid K, the Niger Countdown Case Study Working Group.  
454 Reduction in child mortality in Niger: a Countdown to 2015 country case study. The  
455 Lancet 2012;380(9848):1169–1178  
456 [https://doi.org/10.1016/S0140-6736\(12\)61376-2](https://doi.org/10.1016/S0140-6736(12)61376-2)
- 457 19. Edir, B. Santé Communautaire: Atelier De Validation Du Plan Stratégique National.  
458 2019.  
459 [https://nigerinter.com/2019/11/sante-communautaire-atelier-de-validation-du-plan-](https://nigerinter.com/2019/11/sante-communautaire-atelier-de-validation-du-plan-strategique-national/)  
460 [strategique-national/](https://nigerinter.com/2019/11/sante-communautaire-atelier-de-validation-du-plan-strategique-national/)  
461 Date accessed: November 11, 2020
- 462 20. Intstitut Géographique National Niger (IGNN). 2017. [Updated by the REACH  
463 INITIATIVE in 2018]. Niger - Subnational Administrative Boundaries.  
464 <https://data.humdata.org/dataset/niger-administrative-boundaries>  
465 Date accessed: February 14, 2018

- 466 21. Institut National de la Statistique (INS), UNICEF. 2014. Évaluation de la Mise en  
467 Œuvre de l'Initiative Catalytique dans les Cases de Santé et les Centres de Santé  
468 Intégrés. Niamey, Niger: Institut National de la Statistique (INS) Niger, UNICEF.
- 469 22. NASA JPL. 2013. NASA Shuttle Radar Topography Mission Global 1 arc  
470 second v003. NASA EOSDIS Land Processes DAAC.  
471 <https://doi.org/10.5067/MEaSURES/SRTM/SRTMGL1.003>  
472 Date accessed: October 4, 2017
- 473 23. Humanitarian OpenStreetMap Team (HOTOSM). 2018. HOTOSM Niger Roads  
474 (OpenStreetMap Export).  
475 [https://data.humdata.org/dataset/hotosm\\_niger\\_roads](https://data.humdata.org/dataset/hotosm_niger_roads)  
476 Date accessed: August 1, 2018
- 477 24. Humanitarian OpenStreetMap Team (HOTOSM). 2018. HOTOSM Niger Waterways  
478 (OpenStreetMap Export).  
479 [https://data.humdata.org/dataset/hotosm\\_niger\\_waterways](https://data.humdata.org/dataset/hotosm_niger_waterways)  
480 Date accessed: January 15, 2018
- 481 25. WorldPop ([www.worldpop.org](http://www.worldpop.org) - School Of Geography and Environment Science,  
482 University of Southampton; Department of Geography and Geosciences, University  
483 Of Louisville; Département De Géographie, Université De Namur) And Center for  
484 International Earth Science Information Network (CEISIN), Columbia University.  
485 2018. Global High Resolution Population Denominators Project - Funded by the Bill  
486 and Melinda Gates Foundation (OPP1134076).  
487 <https://dx.doi.org/10.5258/SOTON/WP00660>  
488 Date accessed: March 3, 2020
- 489 26. Facebook Connectivity Lab and Center for International Earth Science Information  
490 Network - CIESIN - Columbia University. 2016. High Resolution Settlement Layer  
491 (HRSL). Source imagery for HRSL © 2016 DigitalGlobe.  
492 <https://data.humdata.org/dataset/highresolutionpopulationdensitymaps-ner>  
493 Date accessed: August 6, 2020
- 494 27. Institute for Health Metrics and Evaluation (IHME). 2019. Low- and Middle-Income  
495 Country Neonatal, Infant, and Under-5 Mortality Geospatial Estimates 2000-2017.  
496 Seattle, United States: Institute for Health Metrics and Evaluation (IHME).

- 497 <http://ghdx.healthdata.org/lbd-data>  
498 Date accessed: March 3, 2020
- 499 28. Weiss DJ, Lucas TCD, Nguyen M, Nandi AK, Bisanzio D, Battle KE, et al. Mapping  
500 the global prevalence, incidence, and mortality of *Plasmodium falciparum*, 2000-  
501 2017: a spatial and temporal modelling study. *Lancet* 2019;394(10195):322–331.  
502 [https://doi.org/10.1016/S0140-6736\(19\)31097-9](https://doi.org/10.1016/S0140-6736(19)31097-9)
- 503 29. Ray N, Ebener S. AccessMod 3.0: computing geographic coverage and accessibility to  
504 health care services using anisotropic movement of patients. *International Journal of*  
505 *Health Geographics* 2008;7(1):63.  
506 <https://doi.org/10.1186/1476-072X-7-63>
- 507 30. Blanford JI, Kumar S, Luo W, MacEachren AM. It's a long, long walk: accessibility  
508 to hospitals, maternity and integrated health centers in Niger. *International Journal of*  
509 *Health Geographics* 2012;11(1):24.  
510 <https://doi.org/10.1186/1476-072X-11-24>
- 511 31. Alegana VA, Maina J, Ouma PO, Macharia PM, Wright J, Atkinson PM, et al.  
512 National and sub-national variation in patterns of febrile case management in sub-  
513 Saharan Africa. *Nature Communications* 2018;9(4994).  
514 <https://doi.org/10.1038/s41467-018-07536-9>
- 515 32. World Health Organization. 2012. Management of severe malaria: a practical  
516 handbook—3<sup>rd</sup> ed. 2012. Geneva: World Health Organization.  
517 [https://apps.who.int/iris/bitstream/handle/10665/79317/9789241548526\\_eng.pdf](https://apps.who.int/iris/bitstream/handle/10665/79317/9789241548526_eng.pdf)
- 518 33. Palmer S and Torgerson DJ. Definitions of efficiency. *BMJ* 1999;318:1136.  
519 <https://doi.org/10.1136/bmj.318.7191.1136>
- 520 34. Weiss DJ, Nelson A, Vargas-Ruiz CA, Gligorić K, Bavadekar S, Gabrilovich E, et al.  
521 Global maps of travel time to healthcare facilities. *Nature Medicine* 2020;26:1835–  
522 1838.  
523 <https://doi.org/10.1038/s41591-020-1059-1>
- 524 35. Bedford KJA, Sharkey AB. Local Barriers and Solutions to Improve Care-Seeking for  
525 Childhood Pneumonia, Diarrhoea and Malaria in Kenya, Nigeria and Niger: A  
526 Qualitative Study. *PLOS ONE* 2014;9(6):e100038.  
527 <https://doi.org/10.1371/journal.pone.0100038>

- 528 36. Ocholla IA, Agutu NO, Ouma PO, Gatungu D, Makokha FO, Gitaka J. Geographical  
529 accessibility in assessing bypassing behaviour for inpatient neonatal care, Bungoma  
530 County-Kenya. *BMC pregnancy and childbirth* 2020;20(1):287.  
531 <https://doi.org/10.1186/s12884-020-02977-x>
- 532 37. Kruk ME, Chukwuma A, Mbaruku G, Leslie H. Variation in quality of primary-care  
533 services in Kenya, Malawi, Namibia, Rwanda, Senegal, Uganda and the United  
534 Republic of Tanzania. *Bulletin of the World Health Organization* 2017;95(6):408–  
535 418.  
536 <https://doi.org/10.2471/BLT.16.175869>
- 537 38. Behrens R, Diaz-Olvera L, Plat D, Pochet P. Meta-analysis of travel of the poor in  
538 West and Southern african cities. 10th World Conference on Transport Research,  
539 Istanbul, 4-8 July 2004.  
540 [https://www.researchgate.net/publication/5087297\\_Meta-](https://www.researchgate.net/publication/5087297_Meta-analysis_of_travel_of_the_poor_in_West_and_Southern_african_cities)  
541 [analysis\\_of\\_travel\\_of\\_the\\_poor\\_in\\_West\\_and\\_Southern\\_african\\_cities](https://www.researchgate.net/publication/5087297_Meta-analysis_of_travel_of_the_poor_in_West_and_Southern_african_cities)  
542 Date accessed: November 15, 2020
- 543 39. Maina J, Ouma PO, Macharia PM, Alegana VA, Mitto B, Fall IS, et al. A spatial  
544 database of health facilities managed by the public health sector in sub Saharan Africa.  
545 *Scientific Data* 2019;6(134).  
546 <https://doi.org/10.1038/s41597-019-0142-2>
- 547 40. Dalglish SL, Surkan PJ, Diarra A, Harouna A, Bennett S. Power and pro-poor  
548 policies: the case of iCCM in Niger. *Health Policy and Planning*  
549 2015;30(suppl\_2):ii84–ii94.  
550 <https://doi.org/10.1093/heapol/czv064>
- 551 41. Croke K. The origins of Ethiopia's primary health care expansion: The politics of state  
552 building and health system strengthening. *Health Policy and Planning* 2020;czaa095.  
553 <https://doi.org/10.1093/heapol/czaa095>
- 554 42. Ebener S, Guerra-Arias M, Campbell J, Tatem AJ, Moran AC, Amoako J, et al. The  
555 geography of maternal and newborn health: the state of the art. *International Journal of*  
556 *Health Geographics* 2015;14(19).  
557 <https://doi.org/10.1186/s12942-015-0012-x>
- 558

559 **Figures**



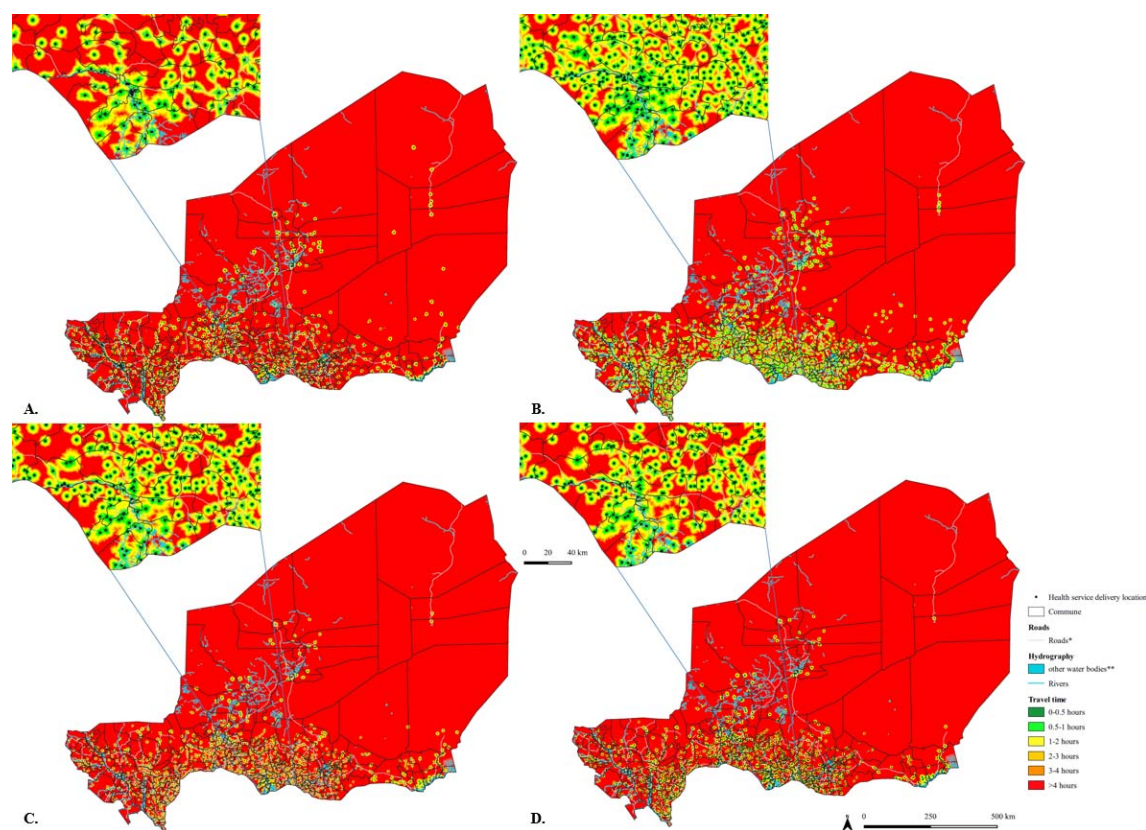
560

561 **Figure 1. Median and interquartile range of the percent of the population within 60**  
562 **minutes walking of an ASC at administrative level 3 (commune) between 2000-2013 at**  
563 **100m x 100m resolution.**

564 Black lines indicate the median at commune level. Blue boxes represent the interquartile  
565 range at commune level. Circles and stars indicate communes outside of the interquartile  
566 range. Red lines and percentages indicate the national mean.

567





568

569 **Figure 2. Geographic accessibility (travel time in minutes, walking in dry conditions) at**  
570 **100m x 100m resolution.**

571 A) Centre de santé intégrée in 2013, n=839; B) Case de santé / Agent de santé communautaire  
572 in 2013, n=2550; C) Agent de santé communautaire in 2013, n=1457; D) Agent de santé  
573 communautaire in 2013 trained on iCCM, n=1214. Inset near Madarounfa commune in  
574 Maradi region. \*For visualization purposes road classes limited to motorway, trunk, primary,  
575 secondary, and tertiary; \*\*other water bodies from landcover layer included permanent water  
576 bodies, temporary water bodies and herbaceous wetlands.

577

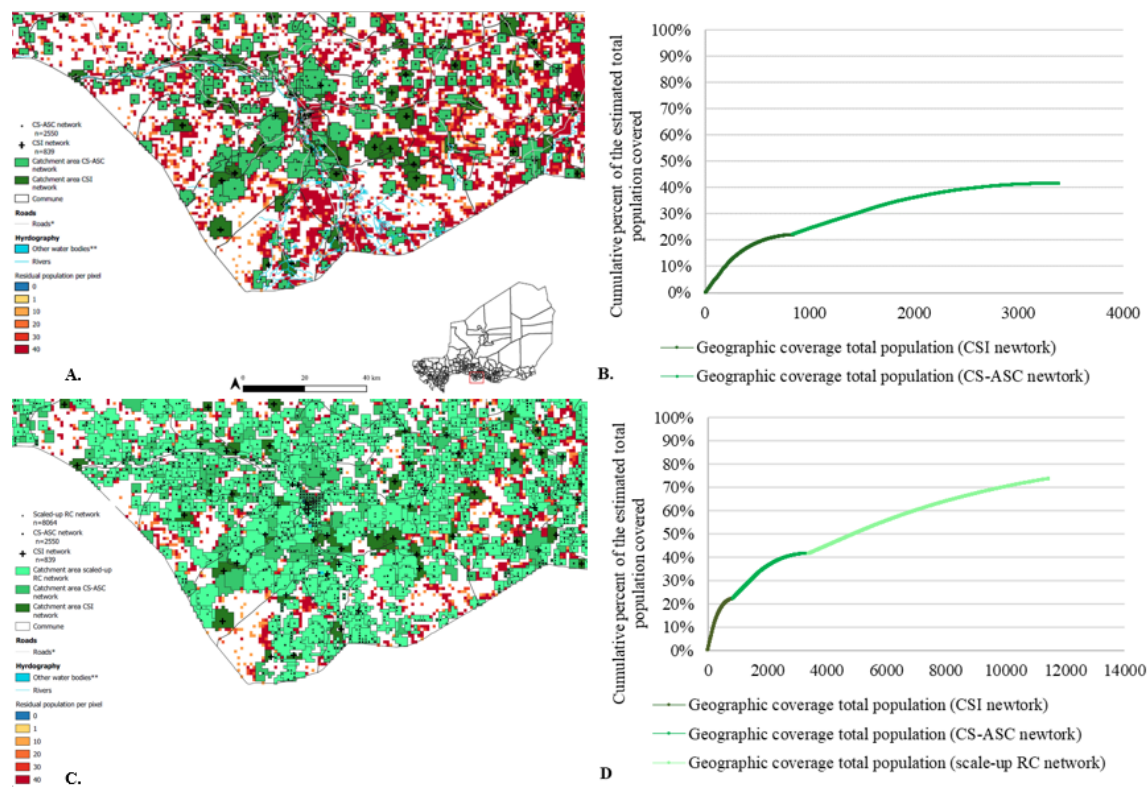
578

579

580

581

582



583

584 **Figure 3. Geographic coverage of the CSI, CS-ASC, and hypothetical scale-up ASC**  
585 **networks in 2013, 60-minute catchment, walking scenario at 1km x 1km resolution.**

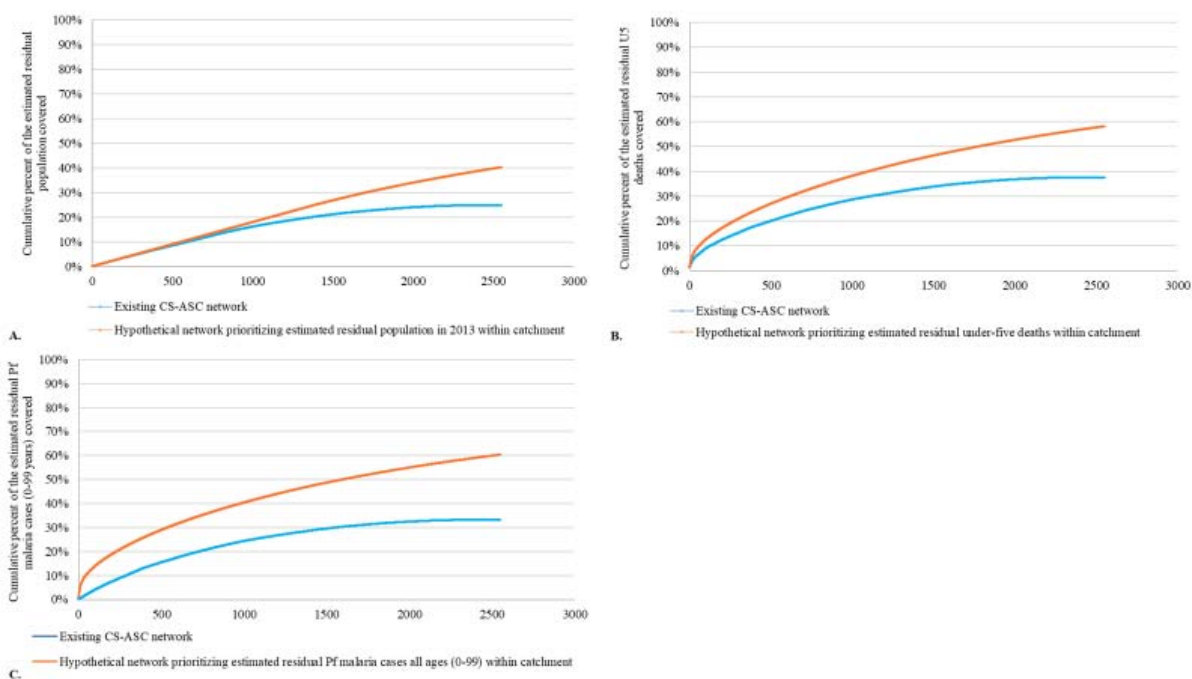
586 A) Geographic coverage at 1km x 1km resolution of the CSI (dark green) and CS-ASC  
587 networks (medium green) in 2013, 60-minute catchment (walking scenario) with inset near  
588 Madarounfa commune in Maradi region; B) Cumulative percent of the estimated total  
589 population covered within a 60-minute catchment, walking scenario (y-axis) by the number of  
590 CSI (x-axis, dark green line) and CS-ASC (x-axis, medium green line) at 1km x 1km  
591 resolution. C) Geographic coverage at 1km x 1km resolution of the CSI network (dark green),  
592 CS-ASC (medium green) and hypothetical scale-up RC network (light green) deployed to  
593 optimize geographic coverage of the residual population beyond the geographic coverage of  
594 the existing CSI and CS-ASC networks (60-minute catchment, walking scenario) in 2013,  
595 with maximum population capacity of 1000 people per RC, n=8064 RC, and inset near  
596 Madarounfa commune in Maradi region; D) Cumulative percent of the estimated total  
597 population covered within a 60-minute catchment, walking scenario (y-axis) by the number of  
598 CSI (x-axis, dark green), CS-ASC (x-axis, medium green), and hypothetical scale-up RC  
599 network (x-axis, light green) at 1km x 1km resolution. The hypothetical scale-up RC network  
600 targeted 1km x 1km grid cells with at least 250 people situated beyond the geographic

601 coverage of the existing CSI and CS-ASC networks (60-minute catchment, walking scenario)  
602 in 2013. Maximum population capacity was set to 1000 people per RC.

603 **Figure 3. Geographic coverage of the CSI and CS-ASC networks in 2013, 60-minute**  
604 **catchment, walking scenario at 1km x 1km resolution.**

605 A) Geographic coverage at 1km x 1km resolution of the CSI and CS-ASC networks in 2013,  
606 60-minute catchment (walking scenario) with inset near Madarounfa commune in Maradi  
607 region; B) Cumulative percent of the estimated total population covered within a 60-minute  
608 catchment, walking scenario (y-axis) by the number of CSI (x-axis, dark green line) and CS-  
609 ASC (x-axis, medium green line) at 1km x 1km resolution.

610



612 **Figure 4. Targeting of the existing CS-ASC network compared to hypothetical optimized**  
613 **networks at 1km x 1km resolution.**

614 A) Comparison of the percent of the estimated residual population beyond the geographic  
615 coverage of the existing CSI network (60-minute catchment, walking scenario) that was  
616 covered by the existing CS-ASC network compared to a hypothetical CS-ASC network  
617 deployed to optimize geographic coverage of the estimated residual population; B)

618 Comparison of the percent of the estimated residual under-five deaths beyond the geographic  
619 coverage of the existing CSI network (60-minute catchment, walking scenario) that was

620 covered by the existing CS-ASC network compared to a hypothetical CS-ASC network  
621 deployed to optimize geographic coverage of the estimated residual under-five deaths; C)  
622 Comparison of the percent of the estimated residual Pf malaria cases among all ages (0-99  
623 years) beyond the geographic coverage of the existing CSI network (60-minute catchment,  
624 walking scenario) that was covered by the existing CS-ASC network compared to a  
625 hypothetical CS-ASC network deployed to optimize geographic coverage of the estimated  
626 residual Pf malaria cases among all ages (0-99 years). All analyses at 1km x 1km resolution.