

1 **Effectiveness of *Wolbachia*-infected mosquito deployments in reducing the incidence of dengue**
2 **and other *Aedes*-borne diseases in Niterói, Brazil: a quasi-experimental study**

3

4 Sofia B. Pinto¹, Thais I. S. Riback¹, Gabriel Sylvestre¹, Guilherme Costa¹, Julia Peixoto¹, Fernando B. S.
5 Dias^{1,2}, Stephanie K. Tanamas³, Cameron P. Simmons^{3,4}, Suzanne M. Dufault⁵, Peter A. Ryan³, Scott L.
6 O'Neill³, Frederico C. Muzzi³, Simon Kutcher³, Jacqui Montgomery³, Benjamin R. Green³, Ruth
7 Smithyman³, Ana Eppinghaus⁶, Valeria Saraceni⁷, Betina Durovni^{1,8^}, Katherine L. Anders^{3^*}, Luciano
8 A. Moreira^{1,9^*}

9

10 ¹ World Mosquito Program, Fiocruz, Rio de Janeiro, Brazil

11 ² Gabinete da Presidência, Fundação Oswaldo Cruz, Rio de Janeiro, Brazil

12 ³ World Mosquito Program, Institute of Vector Borne Disease, Monash University, Clayton, 3800,
13 Australia

14 ⁴ Oxford University Clinical Research Unit, Hospital for Tropical Diseases, 764 Vo Van Kiet, District 5,
15 Ho Chi Minh City, Vietnam

16 ⁵ Division of Biostatistics, School of Public Health, University of California, Berkeley, Berkeley, USA

17 ⁶ City Health Secretariat, Niteroi, Brazil

18 ⁷ City Health Secretariat, Rio de Janeiro, Brazil

19 ⁸ Centre for Strategic Studies, Fiocruz, Rio de Janeiro, Brazil

20 ⁹ Instituto Rene Rachou, Fiocruz, Belo Horizonte, Brazil

21

22 [^] These authors contributed equally to this work

23 * Correspondence: luciano.moreira@worldmosquito.org; katie.anders@worldmosquito.org

24

NOTE: This preprint reports new research that has not been certified by peer review and should not be used to guide clinical practice.

25 **Abstract**

26 *Background:* The introduction of the bacterium *Wolbachia* (wMel strain) into *Aedes aegypti*
27 mosquitoes reduces their capacity to transmit dengue and other arboviruses. Evidence of a
28 reduction in dengue case incidence following field releases of wMel-infected *Ae. aegypti* has been
29 reported previously from a cluster randomised controlled trial in Indonesia, and quasi-experimental
30 studies in Indonesia and northern Australia.

31 *Methods:* Following pilot releases in 2015 – 2016 and a period of intensive community engagement,
32 deployments of adult wMel-infected *Ae. aegypti* mosquitoes were conducted in Niterói, Brazil during
33 2017 – 2019. Deployments were phased across four release zones, with a total area of 83 km² and a
34 residential population of approximately 373,000. A quasi-experimental design was used to evaluate
35 the effectiveness of wMel deployments in reducing dengue, chikungunya and Zika incidence. An
36 untreated control zone was pre-defined, which was comparable to the intervention area in historical
37 dengue trends. The wMel intervention effect was estimated by controlled interrupted time series
38 analysis of monthly dengue, chikungunya and Zika case notifications to the public health surveillance
39 system before, during and after releases, from release zones and the control zone.

40 *Results:* Three years after commencement of releases, wMel introgression into local *Ae. aegypti*
41 populations was heterogeneous throughout Niterói, reaching a high prevalence (>80%) in the
42 earliest release zone, and more moderate levels (prevalence 40 -70%) elsewhere. Despite this spatial
43 heterogeneity in entomological outcomes, the wMel intervention was associated with a 69%
44 reduction in dengue incidence (95% confidence interval 54%, 79%), a 56% reduction in chikungunya
45 incidence (95%CI 16%, 77%) and a 37% reduction in Zika incidence (95%CI 1%, 60%), in the aggregate
46 release area compared with the pre-defined control area. This significant intervention effect on
47 dengue was replicated across all four release zones, and in three of four zones for chikungunya,
48 though not in individual release zones for Zika.

49 *Conclusions:* We demonstrate that wMel *Wolbachia* can be successfully introgressed into *Ae. aegypti*
50 populations in a large and complex urban setting, and that a significant public health benefit from
51 reduced incidence of *Aedes*-borne disease accrues even where the prevalence of wMel in local
52 mosquito populations is moderate and spatially heterogeneous. These findings are consistent with
53 the results of randomised and non-randomised field trials in Indonesia and northern Australia, and
54 are supportive of the *Wolbachia* biocontrol method as a multivalent intervention against dengue,
55 chikungunya and Zika.

56

57 Introduction

58 Dengue is a mosquito-borne disease transmitted primarily by the *Aedes aegypti* mosquito, which has
59 increased globally in both case burden and geographic footprint over the past 50 years.

60 Approximately 40% of the world's population are at risk of dengue transmission, with an estimated
61 400 million infections per year resulting in 50 – 100 million clinical cases and 3.6 million
62 hospitalisations.^{1,2} The economic cost to health systems and communities has been estimated at
63 \$8.9 billion per annum.³ In Brazil, more than 1.5 million dengue cases and 782 deaths were reported
64 nationally in 2019, with in excess of 1300 cases per 100,000 population in the worst affected
65 Central-West region. In the same year 132,000 cases of chikungunya - also transmitted by *Ae.*
66 *aegypti* mosquitoes - were reported, including 92 deaths.

67 Current strategies for dengue control are limited to efforts to suppress immature and adult
68 mosquito numbers, through spraying of insecticides and community campaigns to reduce breeding
69 sites. Even where considerable resources are invested in these activities, sustained suppression of
70 mosquito densities has been elusive, and seasonal outbreaks continue to occur.^{4,5} There is a well-
71 recognised need for new, affordable and effective tools for control of dengue and other *Aedes*-borne
72 arboviruses, including chikungunya and Zika.^{4,6}

73 Stable introduction of the common insect bacterium *Wolbachia* (*wMel* strain) into *Ae. aegypti* has
74 been shown in the laboratory to result in *Ae. aegypti* having reduced transmission potential for
75 dengue and other *Aedes*-borne arboviruses including chikungunya, Zika, Yellow Fever and Mayaro
76 virus.⁷⁻¹⁴ Female *Ae. aegypti* mosquitoes infected with *wMel* transmit the bacterium with high
77 fidelity to their offspring via infected eggs and *wMel* manipulates mosquito reproductive outcomes
78 via a process called cytoplasmic incompatibility, which favours introgression of *wMel* into a wild-
79 type population.¹³ Accumulating evidence from field sites in Australia and Indonesia has
80 demonstrated large reductions in dengue incidence in areas where short-term releases of *wMel*-
81 infected mosquitoes have resulted in introgression and sustained high prevalence of *wMel* in local
82 *Ae. aegypti* populations.¹⁵⁻¹⁷ A recently completed cluster randomised trial of *wMel Wolbachia*
83 deployments in Yogyakarta, Indonesia, conclusively demonstrated the efficacy of the method, with a
84 77% reduction in dengue incidence in *Wolbachia*-treated neighbourhoods compared to untreated
85 areas.¹⁸ The Yogyakarta CRT included chikungunya and Zika as secondary endpoints, but insufficient
86 cases were detected to permit an evaluation of efficacy against these arboviruses. Acquiring field
87 evidence for the effectiveness of *Wolbachia* in reducing transmission of these arboviruses is a
88 priority, as is the accumulation of real-world evidence for public health impact from large-scale

89 implementations of *wMel*-infected *Ae. aegypti* in the complex urban environments common
90 throughout dengue-endemic areas.

91 Pilot releases of *Wolbachia*-infected mosquitoes started in 2014 in Rio de Janeiro and in 2015 in
92 Niterói, Brazil, and achieved successful establishment of *Wolbachia* throughout the two small pilot
93 site communities, each with a population of 2500-2800 people.^{19,20} In 2017 Niterói became the first
94 site in Brazil to move to scaled deployments across a large urban area. The intervention involved a
95 phased approach including engagement with and acceptance by the community, communication
96 strategies to ensure the communities were informed and supportive, releases of *Wolbachia*-infected
97 *Ae. aegypti* mosquitoes, and monitoring of the levels of *Wolbachia* in *Ae. aegypti* in the field.

98 We report here the entomological and epidemiological outcomes of a large-scale non-randomised
99 deployment of *Wolbachia*-infected *Ae. aegypti* mosquitoes in the Brazilian city of Niterói, for the
100 control of dengue and other *Aedes*-borne diseases. The impact of *Wolbachia* deployment on
101 dengue, chikungunya and Zika incidence was evaluated via a quasi-experimental study, using
102 controlled interrupted time series analysis of routine notifiable disease surveillance data, in
103 accordance with a pre-defined protocol.²¹

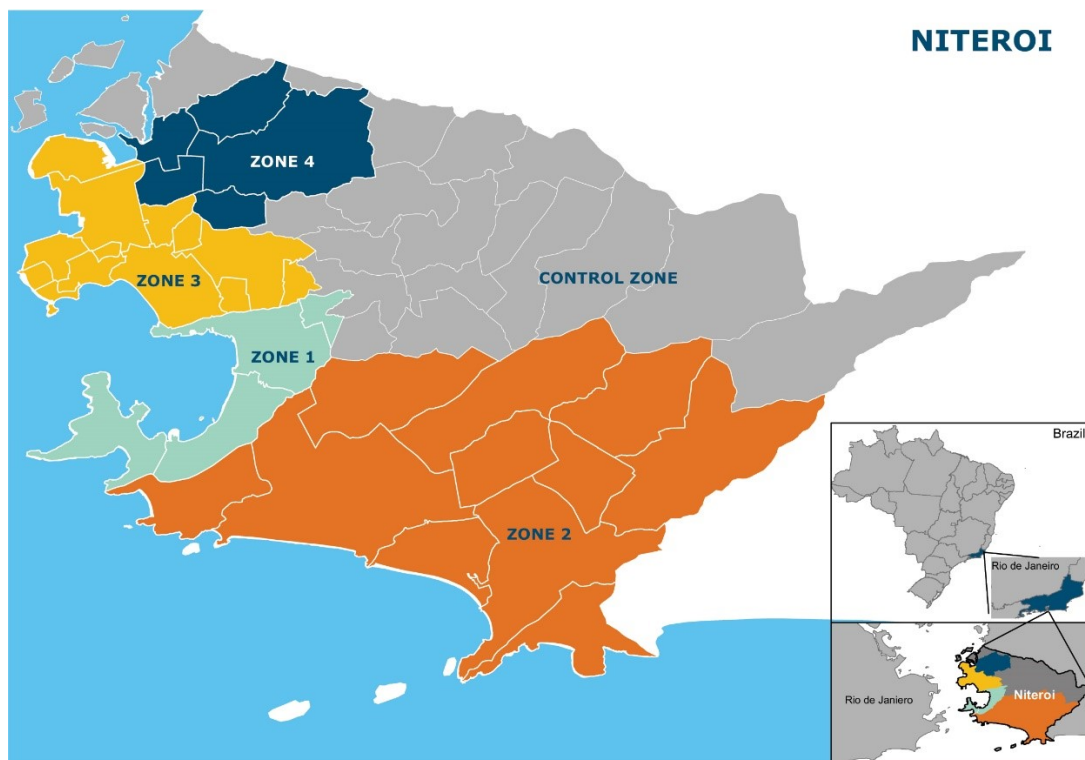
104

105

106 **Methods**

107 *Study setting*

108 Niterói, a municipality of the state of Rio de Janeiro is situated in the Guanabara Bay across from Rio
109 de Janeiro city ([22°52'58"S 43°06'14"W](#)). According to the last national census in 2010 it had a
110 population of 484,918 living in an area of 135 km². The city is divided into 7 health districts for
111 administrative planning. For the evaluation of the impact of *Wolbachia* mosquito deployments,
112 Niterói was divided into four release zones and 1 control zone, which are aligned with
113 neighbourhood administrative boundaries (Figure 1). Table 1 shows the baseline characteristics and
114 release summary of each zone.



115
 116 **Figure 1: Study site map** showing the municipality of Niterói, comprising four zones in which
 117 releases of wMel-infected *Aedes aegypti* have been undertaken and one pre-defined parallel
 118 untreated control zone. Neighbourhood boundaries are shown in white. The inset shows the
 119 location of Niterói within the state of Rio de Janeiro, Brazil.

120
 121 **Table 1: Baseline characteristics and summary of wMel releases and monitoring by zone**

Zone	Population	Total area km ²	Release area km ²	# Release periods*	Estimated mosquitoes released	# of BG traps (& after reduction)	BG trap density per km ² (& after reduction)	Month BG traps first installed
Release zone 1 [^]	23,747	9.2	3.5	2	2,638,847	138 (49)	39 (14)	01/2017
Release zone 2	68,695	50.6	18.9	2	12,836,261	302 (229)	16 (12)	07/2017
Release zone 3	178,891	12.6	9.4	3	12,609,558	169	18	12/2017
Release zone 4	101,784	10.9	8.1	1	6,169,702	140	17	10/2019
Control zone	111,801	51.25	–	–	–			

122 * number of separate periods of releases (see Figure 2, open circles indicate months when
 123 *Wolbachia* releases took place in any part of that zone). In zone 3, the second release period began
 124 immediately after the first, in March 2018, and so appears continuous in Figure 2. ^Release zone 1
 125 includes the Jurujuba neighbourhood where pilot releases were conducted in 2015-16,²⁰ for all
 126 metrics except ‘Estimated mosquitoes released’ which includes only the expanded releases in zone 1
 127 beginning in February 2017; the month that BG traps were first installed in zone 1 also excludes the
 128 pilot release period. Note: release area comprises all urban or constructed areas in the zone, but
 129 excludes green non-constructed areas, which are less favourable habitats for *Ae. aegypti*. The

130 number and density of BG traps was reduced in parts of zone 1 and zone 2 in order to reduce
131 monitoring costs, once releases were completed and neighbourhood-level wMel prevalence was
132 >60% in 3 consecutive monitoring events measured at least 4 weeks after the conclusion of releases.
133 Maps of release and BG trap locations are included in the supplementary material as Figures S3 and
134 S4.

135

136 *Ethics and approvals*

137 Approval to release *Wolbachia*-carrying *Ae. aegypti* mosquitoes into urban areas was obtained from
138 three Brazilian governmental bodies: the National Agency of Sanitary Surveillance (ANVISA); the
139 Ministry of Agriculture, Livestock and Supply (MAPA); and the Brazilian Institute of Environment and
140 Renewable Natural Resources (IBAMA), which issued a Temporary Special Registry (Registro Especial
141 Temporário (RET), nr. 0551716178/2017). Ethical approval was also obtained from the National
142 Commission for Research Ethics (CONEP - CAAE 59175616.2.0000.0008).

143

144 *Community engagement*

145 WMP Brazil's Communication and Engagement (C&E) strategy was developed prior to mosquito
146 releases, following a thorough analysis of geographical, social, political, economic and cultural factors
147 in the proposed release areas as previously described.²²

148 In Niterói the C&E plan was focused on three key areas: public schools, primary health care units and
149 social leadership, due to their reach and influence within the release area, including into vulnerable
150 communities. Community Reference Groups (CRGs) were also created, to serve as advisory
151 committees populated by representatives of the planned release areas, to inform the activities of
152 WMP Brazil. This group was also responsible for providing feedback on all communication materials
153 and C&E strategies that were proposed throughout the WMP's activities in their areas.

154 Prior to the release of wMel-infected mosquitoes in each area, a survey of awareness and acceptance
155 of the method was conducted by an independent company. In order to reach a wide range of people
156 living and working in the release areas, time-location sampling was used to survey passers-by in busy
157 public locations in each neighbourhood. Respondents (n= 3485 in total) were 18 years and over, and
158 lived or worked in the neighbourhood where the survey was conducted. The questionnaire was
159 developed with the CRG, and included questions on awareness ("Have you heard about the *Wolbachia*
160 method?"), understanding after explanation of the method ("Do you understand that this method
161 replaces the population of *Aedes aegypti* mosquitoes with *Aedes aegypti* mosquitoes carrying

162 *Wolbachia*, which have a reduced capacity to transmit dengue, Zika and chikungunya?) and
163 acceptance of the proposed wMel releases (“Do you agree with Fiocruz releasing these mosquitoes
164 with *Wolbachia* here in your neighbourhood?”).

165

166 *Mosquito production*

167 The Rio wMel-infected *Ae. aegypti* line described in Garcia et al 2019²³ was used for releases. The
168 wMel-infected lines were maintained in controlled laboratory conditions, in 900 cm² mesh-sided
169 rearing cages. Each cage contained 2500-2750 adults, and was fed using donated non-transfusional
170 usable human blood (agreement FIOCRUZ/ Hemominas OF.GPO/CCO-Nr224/16), once per week for
171 two to three gonotrophic cycles. As a quality assurance procedure each blood bag was tested for
172 dengue, Zika, chikungunya, Mayaro and yellow fever viruses, as described previously^{9,11,24}. Two
173 separate colonies were maintained, a broodstock (kept in Belo Horizonte) and a release-production
174 colony (kept in Rio de Janeiro). Male *Ae. aegypti* adults (from F0–F1 field collected material) were
175 introduced into the broodstock cages at a rate of 10-20% every 5 generations. This outcrossing
176 frequency was sufficient to maintain kdr resistant genotypes within the broodstock colony throughout
177 its maintenance (see supplementary methods and Figure S1). Material from the broodstock colony
178 was then transferred to the release-production colony where it was amplified through 2 amplifications
179 without the addition of field collected males. A minimum sample of 168 mosquitoes from the release-
180 production colony was screened for wMel infection on a weekly basis, using quantitative polymerase
181 chain reaction (qPCR) as described below. wMel prevalence was 100% in all but three weekly screening
182 events, and was never below 97%. Quantitative analysis of wMel in these samples detected a fairly
183 constant wsp:rps17 copy number between 4 to 6 (Figure S2).

184 From April 2017 until April 2018 immature stages for adult releases were reared at a density of
185 approximately 1.0 larvae/ml and fed a diet of ground Tetramin Tropical Flakes (Tetra Holding [US] Inc.
186 Germany, Product number 77101). From May 2018, immature stages for adult releases were reared
187 at a density of approximately 2.75 larvae/ml and fed a diet of fish food: liver powder: yeast extract
188 (4:3:1). We found no detrimental effects on outcomes, including development time, size, egg output
189 or wMel density, with increases in larval density up to 2.75/ml. In both rearing regimes, when
190 approximately 10-30% of larvae had pupated, the larvae/pupae were sieved and between 180-220
191 larvae/pupae were placed in a release device. The release device was a cylindrical PVC crystal tube
192 approximately 28 mm in diameter and 250 mm in length, covered with a fixed mesh on one side and
193 a removable mesh on the other side. Adults were allowed to emerge for 5–6 days and were
194 maintained on a 10% sugar solution for 12-36 hours prior to releases. We estimated that the releases

195 were slightly male biased with an average female:male ratio within the devices of 3:4. The release
196 devices were then stacked, sugar-free into boxes for transport to the release site.

197

198 *Wolbachia* deployments

199 Mosquito deployments took place over a release area of 40 km² during a period of 35 months
200 (February 2017 - December 2019). Adult wMel-infected mosquitoes were released weekly from a
201 moving vehicle. In Zones 1 - 3 mosquito release points were initially determined using a 50 meter grid
202 overlaid on the release areas, with one release point per grid square. In Zone 4 the density of release
203 points was adjusted for the residential population in each neighbourhood, with the aim of releasing a
204 cumulative total of 100 mosquitoes per resident (average distance between release points on a
205 regular grid was 41 meters). In all areas, the initial release points determined on the grids were then
206 distributed to the nearest vehicle-accessible road for vehicle releases (Figure S3). Releases were
207 staged throughout the urban constructed areas in each release zone. Green non-constructed areas
208 were excluded from releases as they provide less favourable habitats for *Ae. aegypti* and had few or
209 no human residents. Initial release periods were 10-16 weeks duration, with subsequent re-releases
210 conducted in local areas where wMel prevalence was <40% in 3 consecutive monitoring events as
211 measured at least 4 weeks after the conclusion of releases. This 40% threshold was based on previous
212 estimates of the unstable equilibrium point for wMel, above which invasion can occur.²⁵ This resulted
213 in re-releases being conducted in approximately 30% of the initial release areas. Most areas of Zones
214 1 and 2 had two periods of releases, Zone 3 had three periods of releases and Zone 4 only 1 release
215 period.

216

217 *Wolbachia* monitoring

218 Mosquitoes were collected weekly during and after releases using a network of BG Sentinel traps
219 (Biogents AG, Regensburg, Germany, Product number NR10030) at an average density of 16 BG
220 traps/km² throughout release areas (Figure S4). Once wMel prevalence was detected at >60% in 3
221 consecutive monitoring events measured at least 4 weeks after the conclusion of releases, trap
222 numbers were reduced to 50% within a neighbourhood (Figure S4). Mosquitoes were sent to the
223 laboratory for sorting, morphological identification and counting. The number of mosquitoes caught
224 in each BG trap was recorded by species, sex, and in total. Mosquito samples were stored in 70%
225 ethanol until screening for wMel-strain *Wolbachia*. Screening was performed weekly until week
226 ending 8 April 2018 and fortnightly thereafter.

227

228 *Wolbachia* molecular detection

229 A maximum of 10 adult *Ae. aegypti* per BG trap per collection were screened for the presence of wMel
230 using either quantitative polymerase chain reaction (qPCR), or a colorimetric loop-mediated
231 isothermal amplification (LAMP) assay. Taqman qPCR was performed on a Roche LightCycler 480 as
232 described previously.^{16,26} Briefly, the qPCR cycling program consisted of a denaturation at 95°C for 5
233 min followed by 40 cycles of PCR (denaturation at 95 °C for 10 min, annealing at 60 °C for 30 sec, and
234 extension at 72 °C for 1 sec with single acquisition) followed by a cooling down step at 40°C for 30 sec.
235 LAMP reactions were performed in a Bio-Rad C1000 96-well PCR thermocycler with a 30min
236 incubation at 65°C as previously described.¹⁶ Individual reactions consisted of 2X WarmStartR
237 Colorimetric LAMP Master Mix (New England BioLabs, Cat# M1800S), primers and 1 µL of target DNA
238 from a 50µl single mosquito squash buffer extraction assay, in a total reaction volume of 17 µL. An
239 individual mosquito was scored as positive for *Wolbachia* if the Cp (crossing point) value in qPCR was
240 below 28, or if the well in the LAMP assay was yellow upon visual inspection. Equivocal results were
241 counted as negative. Details of primer and probe nucleotide sequences are included in the
242 supplementary materials.

243

244 *Epidemiological data*

245 Data on dengue and chikungunya cases notified to the Brazilian national disease surveillance system
246 (SINAN) were used to evaluate the epidemiological impact of *Wolbachia* releases. Reporting of both
247 diseases is mandatory in Brazil. Dengue notification data for Niterói is available from SINAN since 2007
248 and chikungunya since 2015. Notified dengue and chikungunya cases reported to SINAN are
249 predominantly suspected cases based on a clinical case definition.²⁷

250 Between 2007 - 2014, approximately 15% of notified dengue cases had supportive laboratory test
251 results, usually from IgM serology. Since the Zika epidemic in Brazil in 2015, laboratory confirmation
252 of dengue has relied on PCR only due to cross-reactive serological responses, and only one dengue
253 case notified in 2015 - 2020 included laboratory confirmation. For chikungunya, 24% of cases notified
254 in 2015 - 2020 had supportive IgM serology results. For the purpose of this analysis, we include all
255 notified dengue and chikungunya cases (suspected and laboratory confirmed).

256 Anonymized disaggregate data on notified suspected and laboratory-confirmed dengue, severe
257 dengue, chikungunya and Zika cases were obtained from the SINAN system through the Health
258 Secretariat of Niterói, for the period from January 2007 (January 2015 for chikungunya and Zika) to

259 June 2020. Population data by neighbourhood of residence from the Brazilian 2010 census (IBGE) was
260 used to estimate the population in each *Wolbachia* release zone.

261

262 *Measurement of epidemiological impact*

263 The wMel intervention effect was estimated using controlled interrupted time series analysis
264 performed separately for each release zone compared with the pre-defined control area, and for the
265 aggregate release area compared with the control area, as described in a published study protocol.²¹
266 The primary analysis included data from January 2007 (dengue) or January 2015 (chikungunya and
267 Zika), until June 2020, encompassing 8-37 months of post-intervention observations. For zone-level
268 analyses, negative binomial regression was used to model monthly dengue, chikungunya and Zika case
269 counts in the intervention and control areas, with an offset for population size. Seasonal variability in
270 disease incidence was controlled using flexible cubic splines with knots placed at 6-monthly intervals.
271 For the primary analysis, a binary 'group' variable indicated the study arm (intervention or control). A
272 binary 'treatment' variable distinguished the pre-intervention period and the post-intervention
273 period. The zone-level post-intervention period was defined as four weeks after wMel releases had
274 commenced throughout the whole zone; the corresponding post-intervention period was also applied
275 to the control area for each zone-level analysis. The intervention effect was estimated from the
276 interaction between the 'group' and 'treatment' variables, which allows explicitly for a level change in
277 the outcome (dengue/chikungunya/Zika case incidence) in both intervention and control areas in the
278 post-intervention period. Robust standard errors were used to account for autocorrelation and
279 heteroskedasticity. A mixed-effects negative binomial regression was used to model monthly dengue,
280 chikungunya or Zika case counts in the aggregate release area compared with the control area, with
281 an offset for population size and controlling for seasonal variability in incidence using flexible cubic
282 splines with knots placed at 6-monthly intervals. Clustering of dengue/chikungunya/Zika cases by
283 release zone was modelled as a random effect by including a random intercept at the zone level and
284 allowing for a random slope on the intervention. A binary 'treatment' variable distinguished the pre-
285 intervention period and the post-intervention period, with the control area classified as 'pre-
286 intervention' throughout. Robust standard errors were used to account for autocorrelation and
287 heteroskedasticity. The zone-level and aggregate release area analyses included the pilot release area
288 of Jurujuba within zone 1.

289 To account for within-zone heterogeneity in wMel establishment and dengue incidence, a secondary
290 neighbourhood-level analysis was also performed in which *Wolbachia* exposure was determined by
291 the measured wMel prevalence in *Ae. aegypti* collected from each neighbourhood, and a three-month

292 moving average calculated to smooth the variability in monthly wMel prevalence, categorised into
293 quintiles of exposure. In zone 1 we excluded the neighbourhood of Jurujuba where pilot wMel releases
294 were staggered across seven sectors over a period of 16 months and wMel monitoring was initially
295 done only in small pockets of the neighbourhood where releases had already occurred, because the
296 wMel time-series during this staged release period was not representative of the whole of Jurujuba
297 neighbourhood (whereas the dengue cases data was aggregate for the whole neighbourhood). This
298 analysis included data to March 2020 only, as no *Wolbachia* monitoring was possible April – June 2020
299 due to restrictions on movement in response to the Covid-19 pandemic. Mixed-effects negative
300 binomial regression was used to model monthly dengue case notifications by neighbourhood, in each
301 of the four release zones individually and in all zones combined, compared with the pre-specified
302 control zone. The model included population size as an offset and neighbourhood as a random effect.
303 Given the large number of zero dengue case counts (zero-inflation) at the neighbourhood level, an
304 alternative analysis using a zero-inflated negative-binomial model with robust standard errors to
305 account for clustering was considered. Model fit was not improved by accounting for zero-inflation,
306 as assessed using the Akaike Information Criterion (AIC), and was thus not used in the analyses. This
307 secondary analysis was not performed for chikungunya or Zika due to the sparsity of case data at the
308 neighbourhood level.

309

310 *Sensitivity analyses*

311 As a sensitivity analysis, we excluded pre-intervention observations prior to 2012 to achieve greater
312 balance between pre-intervention and post-intervention period lengths while maintaining sufficient
313 data to inform on pre-intervention trends.²⁸

314

315 *Power estimation*

316 Power was estimated for the ITS analysis using 1000 simulated datasets drawn from a negative
317 binomial distribution fitted to a ten-year time series (2007–2016) prior to *Wolbachia* deployment, of
318 monthly dengue case notifications from release and control zones in Niterói and Rio de Janeiro. The
319 simulated time series of dengue case numbers in the control zones as well as the pre- *Wolbachia*
320 release dengue case numbers in the treated zones were drawn directly from this model-generated
321 distribution. Post- *Wolbachia* release dengue case numbers in the treated zones were drawn from the
322 same model-generated distribution, modified by an additional parameter for an intervention effect of
323 Relative Risks = 0.6, 0.5, 0.4, 0.3. For each of these four ‘true’ effect sizes and a null effect (RR = 1),

324 applied to each of the 1000 simulated time series, the ‘observed’ effect size was calculated from a
325 negative binomial regression model of monthly case counts in the treated and untreated zones, as
326 described above. Post-intervention time periods of 1, 2 or 3 years were simulated, with the pre-
327 intervention period fixed at 7 years. The estimated power to detect a given effect size was determined
328 as the proportion of the 1000 simulated scenarios in which a significant intervention effect ($p < 0.05$)
329 was observed. These simulations indicate 80% power to detect a reduction in dengue incidence of
330 50% or greater after three years of post-intervention observations, and a reduction of 60% or greater
331 after two years.

332

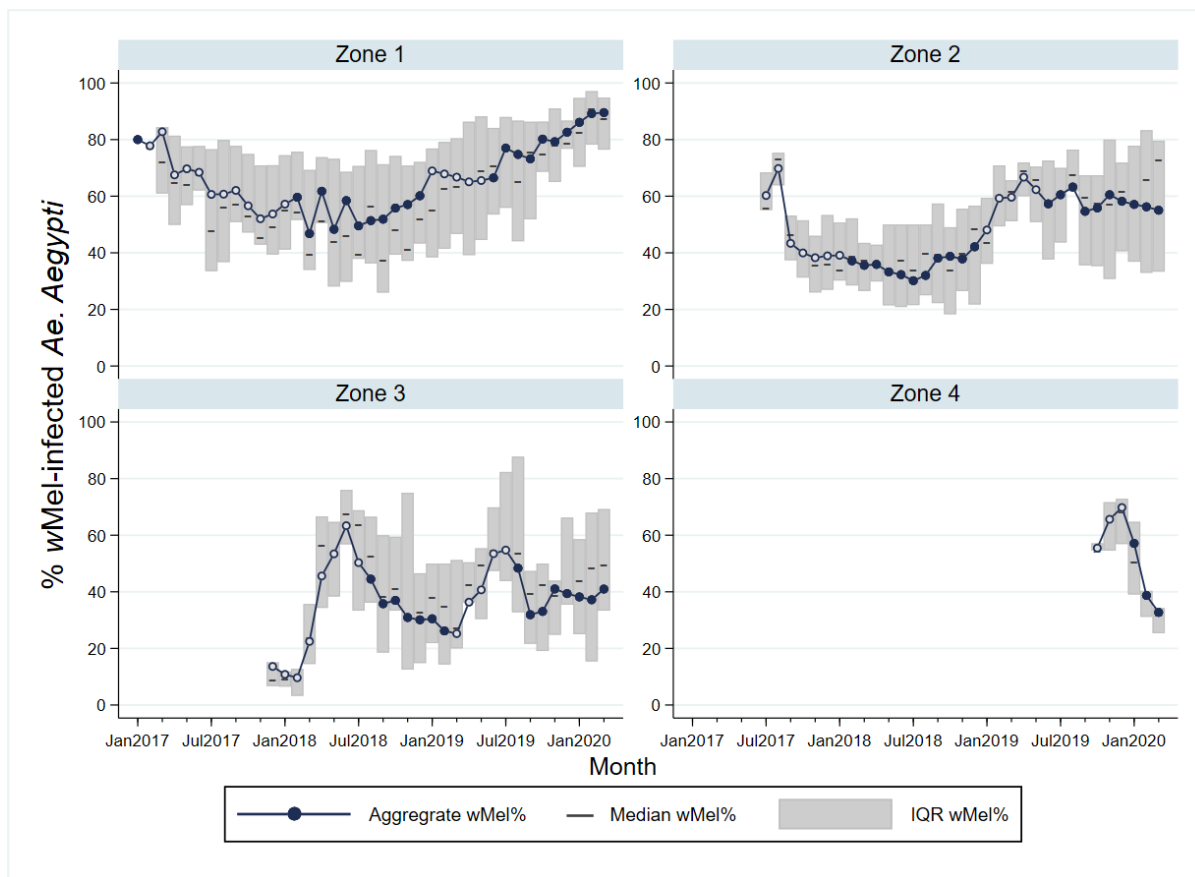
333 **Results**

334 *Wolbachia* establishment in Niterói

335 Awareness (prior knowledge of the *Wolbachia* method) ranged from 36 to 50% and acceptance
336 (agreement with the proposed wMel releases in the neighbourhood) ranged from 65 to 92%, in the
337 public survey conducted prior to releases in Niterói. No negative media nor negative community
338 incidents were registered, and the Community Reference Group endorsed the start of releases.

339 Heterogeneity in wMel *Wolbachia* establishment was observed in three of the four release zones
340 (Figure 2). In the initial release area of zone 1, *Wolbachia* prevalence was greater than 80% in the first
341 quarter of 2020 (up to 11 months post-release) and there was low variability across the
342 neighbourhoods. Local wMel introgression has been more variable in zones 2 and 3, with a median
343 wMel prevalence of 40 -70% among neighbourhoods during the post-release period (11 months and
344 9 months, respectively). In zone 4, a longer post-intervention observation period is required to
345 evaluate the trajectory of wMel establishment. *Aedes albopictus* is present throughout the city and
346 was detected at a similar abundance in our monitoring network during and after releases (Figure S5).

347



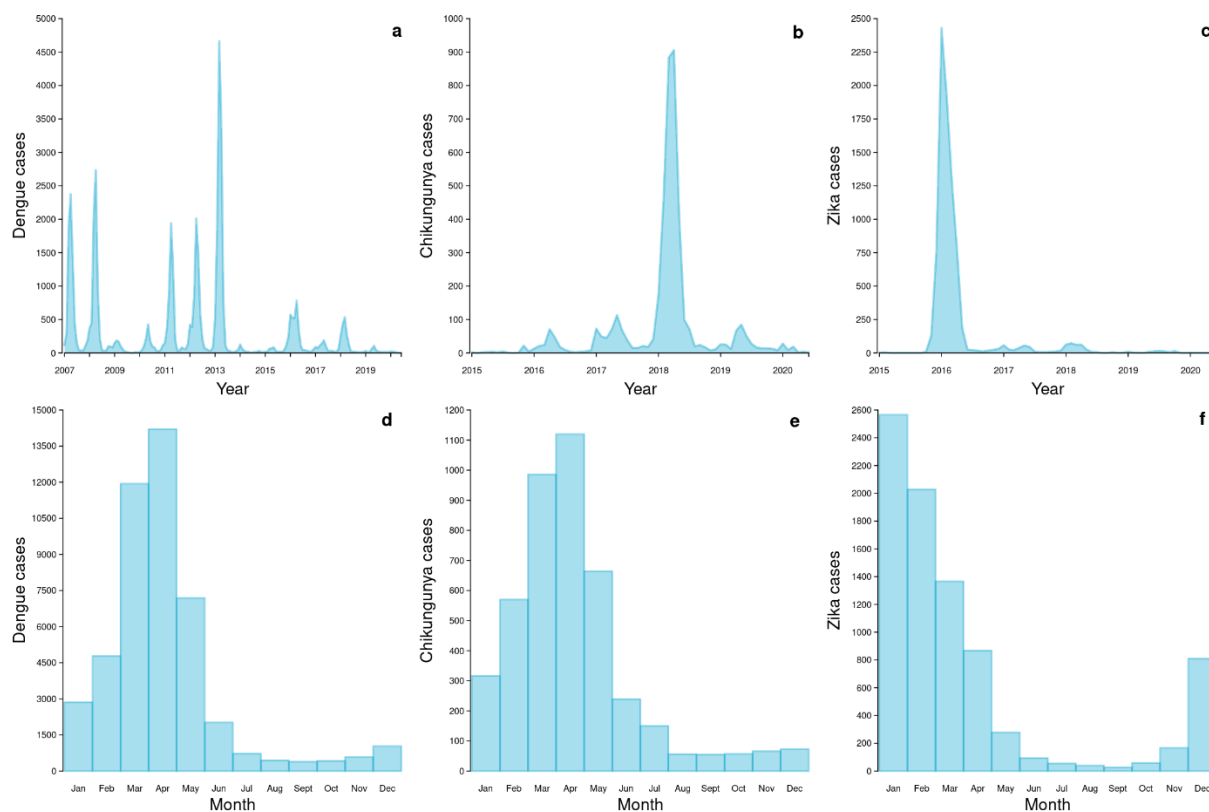
348

349 **Figure 2: wMel infection prevalence in *Aedes aegypti* mosquitoes collected from each release**
 350 **zone, during and after releases.** Circle markers represent the aggregate wMel infection prevalence
 351 in each zone in each calendar month from January 2017 to March 2020. Open circles indicate
 352 months when *Wolbachia* releases took place in any part of that zone; filled circles are months with
 353 no releases. Horizontal lines represent the median wMel infection rate among the individual
 354 neighbourhoods in each zone (n=4 neighbourhoods in Zone 1; n=11 in Zone 2; n=13 in Zone 3; n=5 in
 355 Zone 4). Shaded bars show the interquartile range (IQR) of wMel infection rates among the
 356 individual neighbourhoods in each zone, each month. Note that in January and February 2017, the
 357 only BG traps in Zone 1 were in the Jurujuba pilot release area where releases and monitoring had
 358 been ongoing throughout 2015-2016;²⁰ BG monitoring in March-April 2017 had commenced in 2/4
 359 neighbourhoods and from May 2017 in all 4 Zone 1 neighbourhoods. In Zone 2, BG monitoring in
 360 July-Sept 2017 had commenced in 7/11 neighbourhoods and from Oct 2017 in all 11
 361 neighbourhoods. In Zone 3 and Zone 4, BG monitoring commenced in all neighbourhoods from Dec
 362 2017 and Oct 2019, respectively.

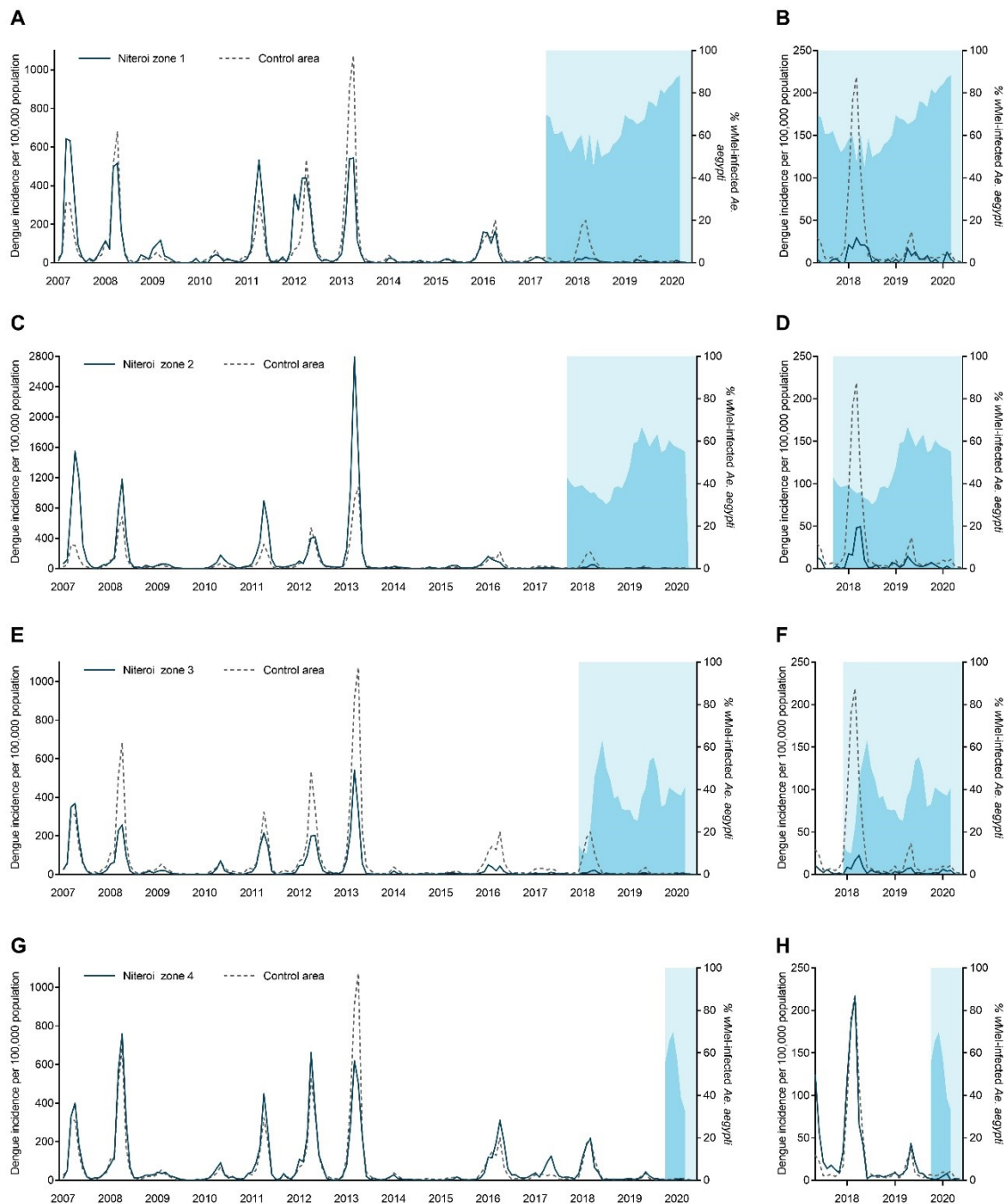
363

364 *Arboviral disease trends pre- and post-Wolbachia intervention*

365 During the ten years prior to the start of scaled *Wolbachia* mosquito releases in Niterói in early 2017,
366 seasonal peaks in dengue case notifications occurred each year (Figure 3A), usually in March and April
367 (Figure 3B). A median of 2,818 dengue cases were notified each year 2007 - 2016 (per capita incidence
368 581/100,000 population), with a minimum of 366 cases in 2014 (75/100,000) following a maximum of
369 11,618 in 2013 (2,396/100,000). In the three years following the start of phased *Wolbachia* releases,
370 annual city-wide dengue case notifications were 895, 1,729 and 378 in 2017, 2018 and 2019
371 respectively, and the seasonal peaks in dengue incidence occurred predominantly in the areas of
372 Niterói that had not yet received *Wolbachia* deployments (Figure 4).



373
374
375 **Figure 3: Dengue, chikungunya and Zika time series and seasonality in Niterói.** Monthly dengue (a),
376 chikungunya (b) and Zika (c) case notifications in Niterói from January 2007 (dengue) or January
377 2015 (chikungunya/Zika) to June 2020, and dengue (d), chikungunya (e) and Zika (f) case
378 notifications aggregated by calendar month, across the same period.



379

380 **Figure 4: Dengue incidence and wMel infection prevalence in local *Aedes aegypti* mosquito**

381 **populations, by release zone. Panels A,C,E,G: Lines show the monthly incidence of dengue case**

382 **notifications per 100,000 population (left-hand Y axis) in Niterói release zones 1 - 4 (solid line in each**

383 **panel) compared with the untreated control zone (dashed line), January 2007 - June 2020. Light blue**

384 **shading indicates the beginning of the epidemiological monitoring period in each zone, one month**

385 **after initial releases were completed in each respective zone. Darker blue shading indicates the**

386 **aggregate wMel infection prevalence (right-hand Y axis) in each zone in each calendar month from**

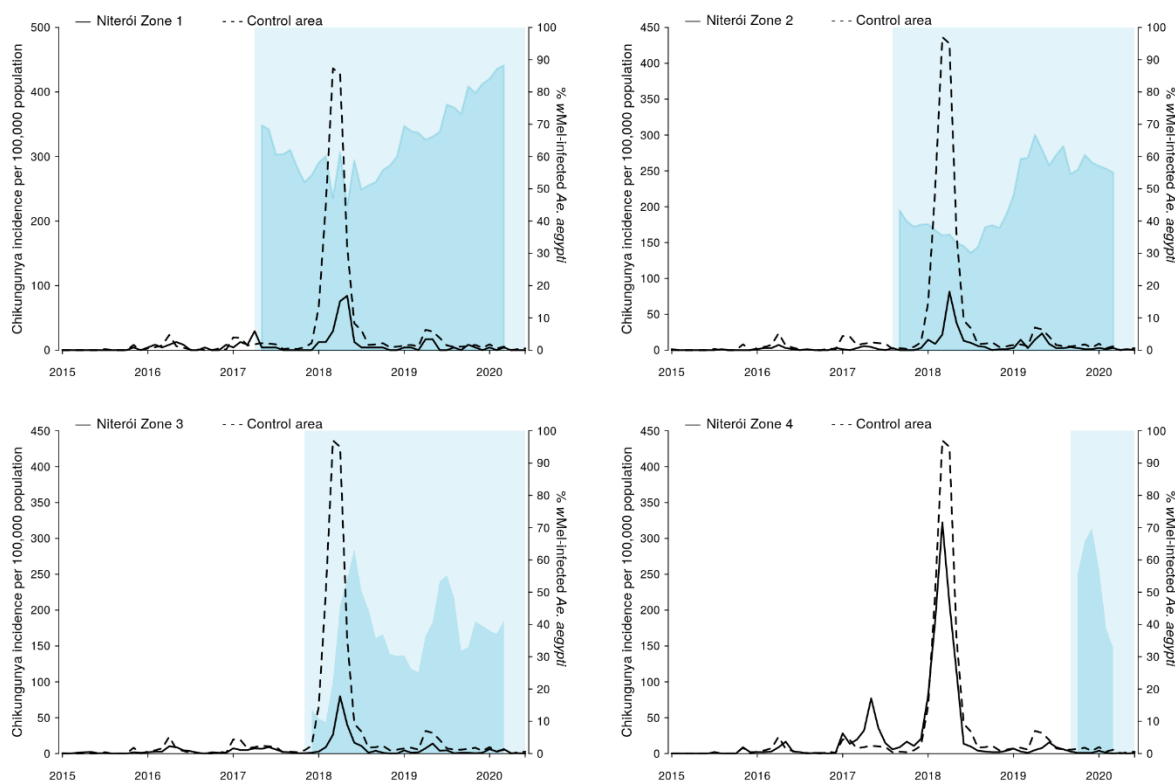
387 **the start of the epidemiological monitoring period until March 2020 (no wMel monitoring April -**

388 June 2020). **Panels B,D,F,H** show the same data but zoomed into the period from May 2017 – March
389 2020 and with the dengue incidence axis rescaled, to show more clearly the trends in release and
390 control zones in the post-intervention period.

391

392 Chikungunya surveillance commenced in January 2015. Between 44 and 533 chikungunya cases were
393 notified annually in Niterói in 2015 - 2019, with the exception of 2018 when an explosive outbreak
394 resulted in 3091 reported cases; 95% of those occurred in the six months January to June. The highest
395 per capita incidence of chikungunya during the 2018 outbreak was in the untreated control zone
396 (1,413 cases/100,000 population; Figure 5), followed by Zone 4 where *Wolbachia* deployments had
397 not yet commenced (958/100,000). In Zones 1, 2, and 3 where deployments were underway and zone-
398 level *Wolbachia* prevalence was between 20 – 55%, the incidence of chikungunya case notifications
399 during the 2018 outbreak was 106/100,000, 244/100,000 and 201/100,000, respectively.

400

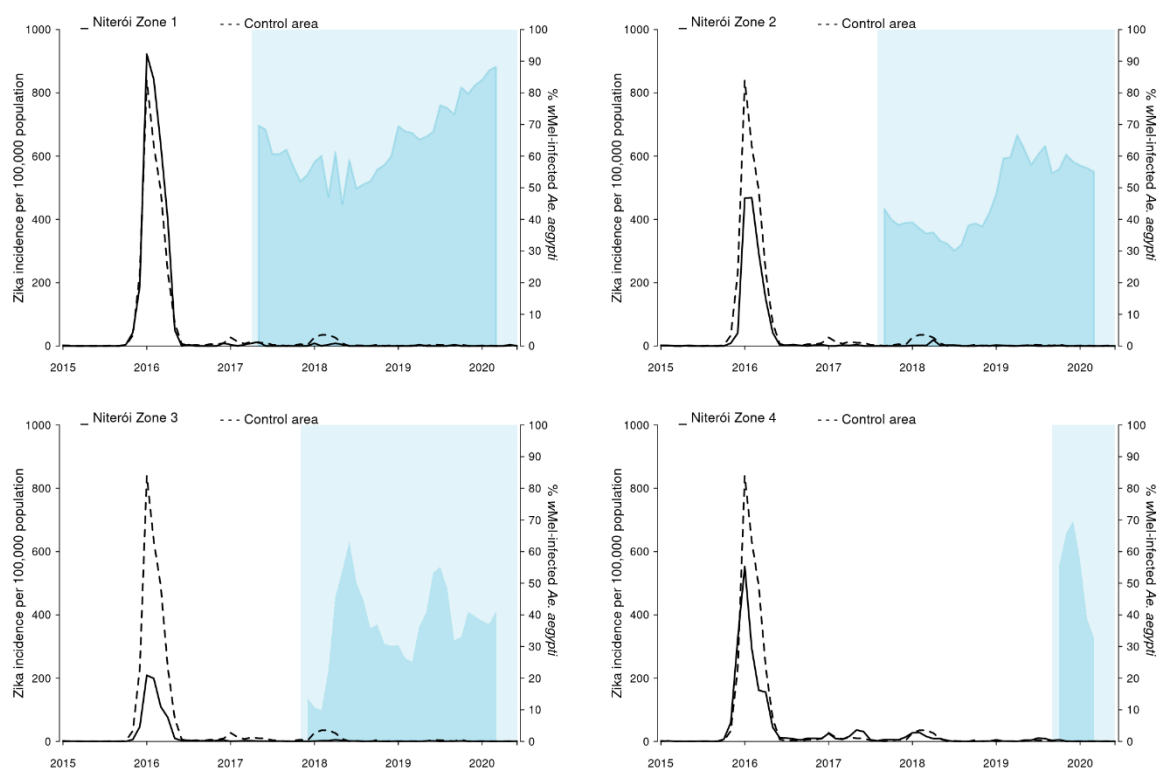


401

402 **Figure 5: Chikungunya incidence and wMel infection prevalence in local *Aedes aegypti* mosquito**
403 **populations, by release zone.** Lines show the monthly incidence of chikungunya case notifications
404 per 100,000 population (left-hand Y axis) in Niterói release zones 1 - 4 (solid line in each panel)
405 compared with the untreated control zone (dashed line), January 2015 - June 2020. Light blue

406 shading indicates the beginning of the epidemiological monitoring period in each zone, one month
407 after initial releases were completed in each respective zone. Darker blue shading indicates the
408 aggregate wMel infection prevalence (right-hand Y axis) in each zone in each calendar month from
409 the start of the epidemiological monitoring period until March 2020 (no wMel monitoring April -
410 June 2020).

411 There were 8,247 Zika cases reported in Niterói between 2015 and June 2020, 91% (n=7,532) of which
412 were reported in 2015-2016 when Brazil experienced an unprecedented Zika outbreak (Figure 6).
413 From 2017, when phased wMel deployments began in Niterói, until June 2020 a total of 715 Zika cases
414 were notified in Niterói, of which of 95 were reported from areas where wMel deployments had
415 already occurred: 12 in zone 1, 28 in zone 2, 48 in zone 3, and 7 in zone 4.



416

417 **Figure 6: Zika incidence and wMel infection prevalence in local *Aedes aegypti* mosquito populations,**
418 **by release zone.** Lines show the monthly incidence of Zika case notifications per 100,000 population
419 (left-hand Y axis) in Niterói release zones 1 - 4 (solid line in each panel) compared with the untreated
420 control zone (dashed line), January 2015 - June 2020. Light blue shading indicates the beginning of the
421 epidemiological monitoring period in each zone, one month after initial releases were completed in
422 each respective zone. Darker blue shading indicates the aggregate wMel infection prevalence (right-

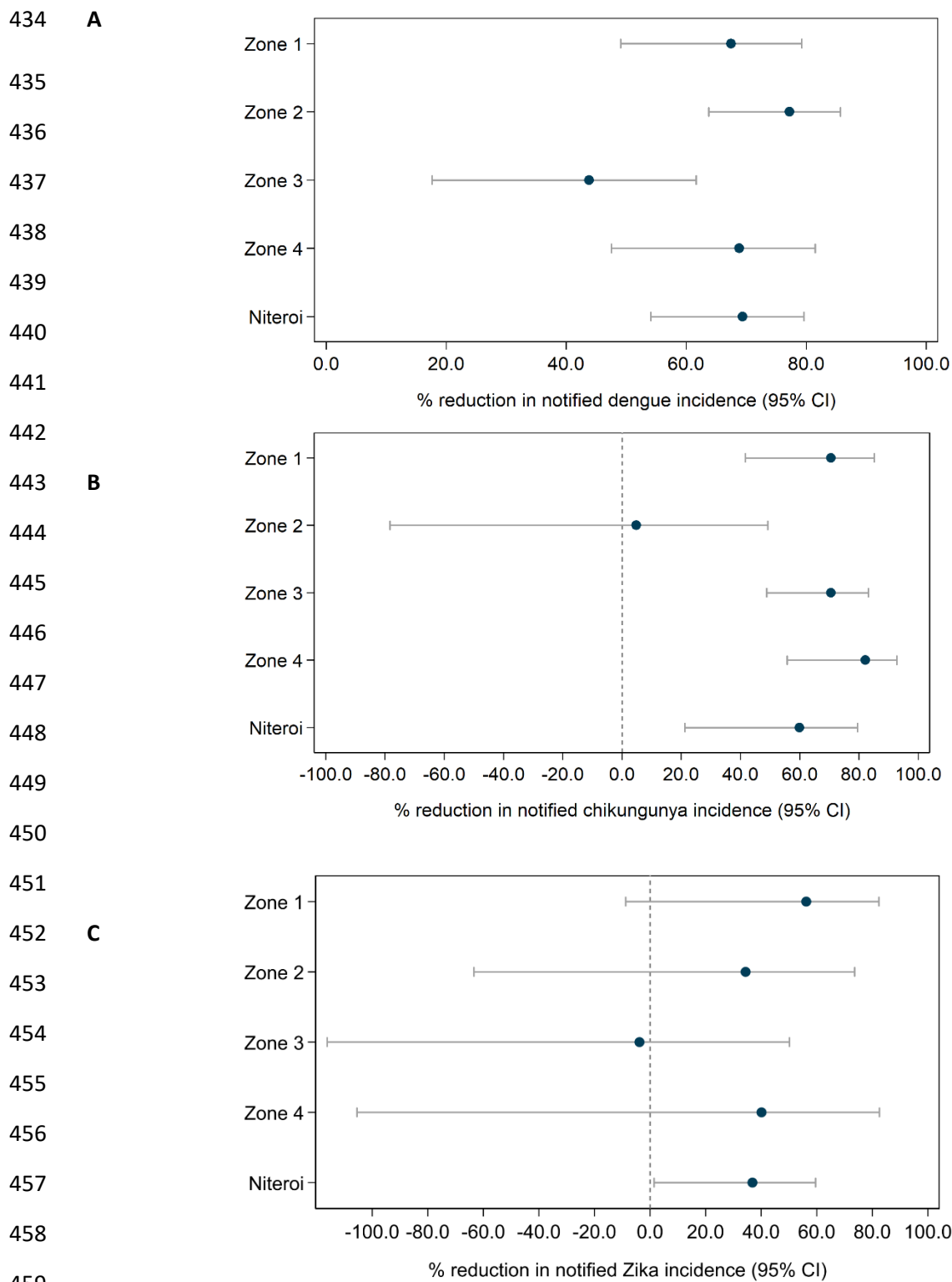
423 hand Y axis) in each zone in each calendar month from the start of the epidemiological monitoring
424 period until March 2020 (no wMel monitoring April - June 2020).

425

426 *Reduction in dengue, chikungunya and Zika incidence post-Wolbachia intervention*

427 Using interrupted time series (ITS) analysis to account for underlying temporal trends in case incidence
428 and staggered implementation of the intervention, we found that wMel *Wolbachia* deployments were
429 associated with a significant reduction in dengue incidence in each of the four release zones (Figure
430 6a). The magnitude of this reduction ranged from 46.0% (95%CI 21.0, 63.0) in Zone 3 to 75.9% (95%CI
431 62.1, 84.7) in Zone 2. Overall, *Wolbachia* deployments were associated with a 69.4% (95%CI 54.4,
432 79.4) reduction in dengue incidence in Niterói (Figure 7A; Table S1).

433



460 **Figure 7:** Estimated reduction in the incidence of dengue (A) chikungunya (B) and Zika (C) following
 461 *Wolbachia* deployments in Niterói, in each release zone individually and in the aggregate release
 462 area. Point estimates (circles) and 95% confidence intervals (horizontal bars) from controlled
 463 interrupted time series analysis of monthly dengue (Jan 2007 – June 2020), chikungunya and Zika
 464 (Jan 2015 – June 2020) case notifications to the Brazilian national disease surveillance system.

465

466 This *Wolbachia* intervention effect against dengue was also apparent overall, and in each zone, in the
467 neighbourhood-level analysis that considered quintiles of *wMel* prevalence in local *Ae. aegypti*
468 populations, although we found evidence of only marginal additional reductions in dengue incidence
469 at higher levels of *Wolbachia* beyond 20 – 40% *wMel* prevalence (Figure S6; Table S2). There was
470 substantial month-to-month variation in *wMel* quintiles within neighbourhoods (Figure S7), which was
471 reduced but not removed by taking a three-month moving average of *wMel* prevalence. The result
472 were little changed in the sensitivity analysis, which excluded pre-intervention observations prior to
473 2012 (Figure S8; Table S3).

474 A total of 897 severe dengue cases were reported in Niterói between 2007 and early 2020, 691 of
475 which were from one of the four intervention zones and 206 from the control zone. Only three of
476 these cases occurred in the post-intervention period, two in zone 2 and one in zone 3. The control
477 zone has not had any severe dengue cases reported since 2016. These numbers were too sparse to be
478 analysed using our ITS model, even when allowing for zero-inflation.

479 We found in ITS analysis that chikungunya incidence was also significantly reduced following
480 *Wolbachia* deployments in Niterói as a whole (56.3% reduction in incidence; 95%CI 15.9, 77.3) and in
481 three of the four individual release zones (Figure 7B; Table S1). Zika incidence was reduced by 37%
482 (95%CI 1.5, 59.5) following *Wolbachia* deployments in Niterói as a whole, though not in individual
483 release zones (Figure 7C; Table S1).

484

485 Discussion

486 Large-scale phased deployments of *wMel* strain *Wolbachia*-infected *Aedes aegypti* mosquitoes in
487 Niterói, Brazil during 2017 - 2019, resulted in *wMel* establishment in local *Ae. aegypti* populations at
488 an infection frequency of 33 – 90% by March 2020, when field monitoring was paused due to the
489 emergence of SARS-CoV-2 in Brazil. More than one-quarter of the total 373,000 residents of the
490 intervention area were living in neighbourhoods where local *wMel* prevalence was 60% or greater by
491 March 2020, predominantly in zones 1 and 2 where releases commenced earliest. In the remaining
492 intervention areas, *wMel* prevalence was more heterogeneous and a resumption of entomological
493 monitoring is planned in order to evaluate the long-term trajectory of *wMel* introgression into the
494 local *Ae. aegypti* population.

495 Despite this heterogeneity in *Wolbachia* establishment, a significant reduction in the incidence of
496 dengue, chikungunya and Zika case notifications was observed in *Wolbachia*-treated areas of Niterói,
497 compared with a pre-defined untreated control area. This epidemiological impact on dengue was
498 replicated across all four release zones, and in three of the four zones for chikungunya. Aggregate
499 across the whole intervention area, the *wMel* deployments were associated with a 69% reduction in
500 dengue incidence, a 56% reduction in chikungunya incidence and a 37% reduction in Zika incidence.
501 Given the recognised lack of evidence for efficacy of routinely available approaches to arboviral
502 disease control⁴ based on elimination of breeding sites and insecticide-based suppression of adult
503 mosquito populations, and considering the magnitude of the historical burden of *Aedes*-borne disease
504 in Niterói, an intervention effect of this magnitude represents a substantial public health benefit.

505 Results from a recent cluster randomised trial of *wMel*-infected *Ae aegypti* deployments in Yogyakarta
506 Indonesia demonstrated 77% efficacy in preventing virologically confirmed dengue cases,¹⁸ with
507 comparable efficacy against all four dengue virus serotypes. Previous non-randomised controlled field
508 trials in Indonesia¹⁵ and northern Australia^{16,17} demonstrated 76% and 96% effectiveness, respectively,
509 in reducing the incidence of dengue cases notified to routine disease surveillance systems. In each of
510 those sites the trajectory of *wMel* establishment was more rapid and more homogeneous across the
511 release area than observed in Niterói. In the present study, the epidemiological impact in the area of
512 Niterói where *wMel* introgression occurred most rapidly and homogeneously (Zone 1) was highly
513 comparable with the Indonesian studies: 77% (95%CI 64, 86). Another *Wolbachia* strain, *wAlbB*, has
514 been successful introgressed into *Ae. aegypti* field populations in Kuala Lumpur, Malaysia,²⁹ although
515 with instability in *wAlbB* frequencies in some release areas after cessation of releases, which the
516 authors attributed to immigration of wild-type mosquitoes into the small release sites (area 0.05 –
517 0.73 km²) from surrounding untreated areas.

518 The reasons for slower and more heterogeneous *wMel* introgression here, compared to Indonesia and
519 Australia, are not fully understood. A likely contributing factor is that these scaled deployments have
520 largely used adult mosquitoes released from vehicles, which does not deliver as spatially
521 homogeneous a deployment as occurred previously in Indonesia and Australia. In contrast, the small-
522 scale pilot releases in the Jurujuba neighbourhood of Niterói in 2015 achieved rapid and sustained
523 introgression of *wMel* after 8 – 31 weeks of egg-based releases.²⁰ Additionally, Niterói release areas
524 were complex urban environments with high rise areas and large informal settlements, where field
525 activities were frequently interrupted by security issues³⁰ and where physical barriers to spread,³⁰
526 spatial heterogeneity in mosquito abundance,³¹ and limited mosquito dispersal³² could have
527 contributed to slower *wMel* introgression. The wild-type egg bank in such a setting is likely to be large

528 and spatially heterogeneous, and would take time to be depleted, which is likely to have contributed
529 to the heterogeneity in *wMel* introgression and intermediate frequencies of *Wolbachia* observed in
530 our study. Regular monitoring of the *wMel*-*Ae. aegypti* broodstock has demonstrated insecticide
531 susceptibility profiles comparable with wild-type material, so a concern of increased susceptibility to
532 insecticide is not considered to be an issue here. Impaired maternal transmission by *wMel* -infected
533 females^{33,34} and loss of induction of cytoplasmic incompatibility by *wMel* -infected males³⁵ has been
534 observed by others at high, but field relevant, temperatures. Exposure of immature *Ae. aegypti* to
535 very high temperatures in small water containers cannot be excluded as a contributing factor to the
536 *wMel* introgression patterns observed in Niterói, especially in the more informal settlements where
537 the urban landscape is more vulnerable to temperature variations. Entomological monitoring in future
538 years will help clarify the long-term trajectory of *wMel* introgression in Niterói.

539 In large and complex urban environments, a homogeneous high level of introgression of *wMel* may
540 prove operationally challenging and slow to achieve, even with optimised release methods and longer
541 post-release monitoring. This poses the question of what minimum threshold of *wMel* prevalence is
542 needed to achieve interruption of local arbovirus transmission, and whether a dose-response
543 relationship is observed between *wMel* prevalence and disease reduction. Predictions from
544 mathematical models have suggested that even in conservative scenarios where scaled *Wolbachia*
545 deployments only reduce the reproduction number (R_0) of dengue by 50%, this could lead to
546 reductions in global case incidence of 70%,³⁶ although the impact is predicted to be highly spatially
547 heterogeneous, with smaller relative reductions in areas with highest transmission intensity. Our
548 findings support this prediction of epidemiological impact with imperfect *wMel*-mediated
549 transmission blocking, by demonstrating that measurable reductions in dengue, chikungunya and Zika
550 disease accrue even at a moderate prevalence of *wMel* in local *Ae. aegypti* populations. A secondary
551 analysis based on measured *wMel* prevalence and dengue case notifications at the neighbourhood-
552 level found only a marginal increase in the *wMel* intervention effect beyond 20 – 40% prevalence,
553 which was unexpected. This analysis also indicated substantial variability in *wMel* prevalence over
554 time (within neighbourhoods). This may be attributable in part to sampling variability due to small *Ae.*
555 *aegypti* catch numbers in some areas but may also indicate true local instability in *Wolbachia* levels.
556 When combined with people's mobility and risk of acquiring dengue outside their neighbourhood of
557 residence these factors may help explain the non-linear association between measured
558 neighbourhood-level monthly *wMel* infection prevalence and dengue risk. The absolute abundance
559 of wild-type *Ae. aegypti*, independent of *wMel* prevalence, is also relevant to understanding local
560 dengue risk and could not be accounted for in our time series analyses because of a lack of baseline
561 (pre-intervention) mosquito collection data. We cannot exclude that incompatibility within the

562 population of wMel positive and negative *Ae. aegypti* could impact overall population size and
563 contribute to the observed epidemiological outcomes. Overall, a contribution of indirect effects,
564 confounding by mosquito population size, and imperfect wMel exposure measurement to the
565 observation of an epidemiological impact even at moderate wMel prevalence cannot be excluded,
566 and this observation needs replication in other settings.

567 This study has some limitations. Deployments of wMel-infected *Ae. aegypti* were not randomised, so
568 there is the potential for measurement of the intervention effect to be confounded by other factors
569 that differ between the release areas and the pre-defined control area. Routine disease surveillance
570 data is imperfect both in specificity (not all notified cases are true dengue/chikungunya/Zika cases)
571 and in sensitivity (not all dengue/chikungunya/Zika cases are notified). However, the risk of these
572 factors influencing the measurement of the epidemiological endpoint here is reduced by the inclusion
573 of a parallel control with a historical dengue time series that is highly synchronous with each of the
574 release areas for ten years pre-intervention. The replication of the dengue intervention effect in each
575 of the four release zones, and for chikungunya in three zones, also mitigates the possibility that any
576 parallel change in vector control practices or healthcare seeking behaviour in intervention areas could
577 have confounded the observed result. For chikungunya and Zika, there is substantial uncertainty
578 around the point estimate of the intervention effect because case notifications for these two diseases
579 were very sparse in both release and control areas outside of a single large outbreak in 2018 and 2015-
580 16,

581 We have demonstrated that wMel introgression can be achieved across a large and complex urban
582 environment over a period of three years to a prevalence in local *Ae. aegypti* which, while still
583 heterogeneous, is sufficient to result in a measurable reduction in dengue, chikungunya and Zika case
584 incidence. Ongoing entomological and epidemiological monitoring will provide additional information
585 on the trajectory of wMel establishment in areas where releases have occurred more recently, or
586 introgression has been slower, and on the full magnitude and durability of the public health benefit.

587

- 588 1. Cattarino L, Rodriguez-Barraquer I, Imai N, Cummings DAT, Ferguson NM. Mapping global
589 variation in dengue transmission intensity. *Sci Transl Med* 2020;12.
- 590 2. Stanaway JD, Shepard DS, Undurraga EA, et al. The global burden of dengue: an analysis
591 from the Global Burden of Disease Study 2013. *Lancet Infect Dis* 2016;16:712-23.
- 592 3. Shepard DS, Undurraga EA, Halasa YA, Stanaway JD. The global economic burden of dengue:
593 a systematic analysis. *Lancet Infect Dis* 2016;16:935-41.
- 594 4. Bowman LR, Donegan S, McCall PJ. Is dengue vector control deficient in effectiveness or
595 evidence?: systematic review and meta-analysis. *PLoS Negl Trop Dis* 2016;10:e0004551.
- 596 5. Sim S, Ng LC, Lindsay SW, Wilson AL. A greener vision for vector control: The example of the
597 Singapore dengue control programme. *PLoS Negl Trop Dis* 2020;14:e0008428.
- 598 6. Wilson AL, Boelaert M, Kleinschmidt I, et al. Evidence-based vector control? Improving the
599 quality of vector control trials. *Trends Parasitol* 2015;31:380-90.
- 600 7. Aliota MT, Peinado SA, Velez ID, Osorio JE. The wMel strain of *Wolbachia* reduces
601 transmission of Zika virus by *Aedes aegypti*. *Sci Rep* 2016;6:28792.
- 602 8. Aliota MT, Walker EC, Uribe Yepes A, Velez ID, Christensen BM, Osorio JE. The wMel strain of
603 *Wolbachia* reduces transmission of chikungunya virus in *Aedes aegypti*. *PLoS Negl Trop Dis*
604 2016;10:e0004677.
- 605 9. Dutra HL, Rocha MN, Dias FB, Mansur SB, Caragata EP, Moreira LA. *Wolbachia* blocks
606 currently circulating Zika virus isolates in Brazilian *Aedes aegypti* mosquitoes. *Cell Host Microbe*
607 2016;19:771-4.
- 608 10. Moreira LA, Iturbe-Ormaetxe I, Jeffery JA, et al. A *Wolbachia* symbiont in *Aedes aegypti*
609 limits infection with dengue, chikungunya, and *Plasmodium*. *Cell* 2009;139:1268-78.
- 610 11. Pereira TN, Rocha MN, Sucupira PHF, Carvalho FD, Moreira LA. *Wolbachia* significantly
611 impacts the vector competence of *Aedes aegypti* for Mayaro virus. *Sci Rep* 2018;8:6889.
- 612 12. van den Hurk AF, Hall-Mendelin S, Pyke AT, et al. Impact of *Wolbachia* on infection with
613 chikungunya and yellow fever viruses in the mosquito vector *Aedes aegypti*. *PLoS Negl Trop Dis*
614 2012;6:e1892.
- 615 13. Walker T, Johnson PH, Moreira LA, et al. The wMel *Wolbachia* strain blocks dengue and
616 invades caged *Aedes aegypti* populations. *Nature* 2011;476:450-3.
- 617 14. Ye YH, Carrasco AM, Frentiu FD, et al. *Wolbachia* reduces the transmission potential of
618 dengue-infected *Aedes aegypti*. *PLoS Negl Trop Dis* 2015;9:e0003894.
- 619 15. Indriani C, Tantowijoyo W, Rances E, et al. Reduced dengue incidence following deployments
620 of *Wolbachia*-infected *Aedes aegypti* in Yogyakarta, Indonesia: a quasi-experimental trial using
621 controlled interrupted time series analysis. *Gates Open Res* 2020;4:50.
- 622 16. O'Neill SL, Ryan PA, Turley AP, et al. Scaled deployment of *Wolbachia* to protect the
623 community from dengue and other *Aedes* transmitted arboviruses. *Gates Open Res* 2018;2:36.
- 624 17. Ryan PA, Turley AP, Wilson G, et al. Establishment of wMel *Wolbachia* in *Aedes aegypti*
625 mosquitoes and reduction of local dengue transmission in Cairns and surrounding locations in
626 northern Queensland, Australia. *Gates Open Res* 2019;3:1547.
- 627 18. Utarini A, Indriani C, Ahmad RA, et al. Efficacy of *Wolbachia*-infected mosquito deployments
628 for dengue control. *N Engl J Med* 2021;In Press.
- 629 19. Garcia GA, Sylvestre G, Aguiar R, et al. Matching the genetics of released and local *Aedes*
630 *aegypti* populations is critical to assure *Wolbachia* invasion. *PLoS Negl Trop Dis* 2019;13:e0007023.
- 631 20. Gesto JSM, Ribeiro GS, Rocha MN, et al. Reduced competence to arboviruses following the
632 sustainable invasion of *Wolbachia* into native *Aedes aegypti* from Southeastern Brazil. *Sci Rep*
633 2021;11:10039.
- 634 21. Durovni B, Saraceni V, Eppinghaus A, et al. The impact of large-scale deployment of
635 *Wolbachia* mosquitoes on dengue and other *Aedes*-borne diseases in Rio de Janeiro and Niteroi,
636 Brazil: study protocol for a controlled interrupted time series analysis using routine disease
637 surveillance data. *F1000Res* 2019;8:1328.

- 638 22. Costa GB, Smithyman R, O'Neill SL, Moreira LA. How to engage communities on a large
639 scale? Lessons from World Mosquito Program in Rio de Janeiro, Brazil [version 1; peer review: 1
640 approved, 2 approved with reservations]. *Gates Open Res* 2020;4.
- 641 23. Garcia GA, Hoffmann AA, Maciel-de-Freitas R, Villela DAM. *Aedes aegypti* insecticide
642 resistance underlies the success (and failure) of *Wolbachia* population replacement. *Sci Rep*
643 2020;10:63.
- 644 24. Rocha MN, Duarte MM, Mansur SB, et al. Pluripotency of *Wolbachia* against Arboviruses:
645 the case of yellow fever. *Gates Open Res* 2019;3:161.
- 646 25. Hoffmann AA, Montgomery BL, Popovici J, et al. Successful establishment of *Wolbachia* in
647 *Aedes* populations to suppress dengue transmission. *Nature* 2011;476:454-7.
- 648 26. Dar M, Giesler T, Richardson R, et al. Development of a novel ozone- and photo-stable
649 HyPer5 red fluorescent dye for array CGH and microarray gene expression analysis with consistent
650 performance irrespective of environmental conditions. *BMC Biotechnol* 2008;8:86.
- 651 27. Ministry of Health Brazil (Health Surveillance Secretariat). Guia de Vigilância em Saúde :
652 volume único.
- 653 28. Bernal JL, Cummins S, Gasparrini A. Interrupted time series regression for the evaluation of
654 public health interventions: a tutorial. *Int J Epidemiol* 2017;46:348-55.
- 655 29. Nazni WA, Hoffmann AA, NoorAfizah A, et al. Establishment of *Wolbachia* strain wAlbB in
656 Malaysian populations of *Aedes aegypti* for dengue control. *Curr Biol* 2019;29:4241-8 e5.
- 657 30. Schmidt TL, Filipovic I, Hoffmann AA, Rasic G. Fine-scale landscape genomics helps explain
658 the slow spatial spread of *Wolbachia* through the *Aedes aegypti* population in Cairns, Australia.
659 *Heredity (Edinb)* 2018;120:386-95.
- 660 31. Hancock PA, Ritchie SA, Koenraad CJM, Scott TW, Hoffmann AA, Godfray HCJ. Predicting the
661 spatial dynamics of *Wolbachia* infections in *Aedes aegypti* arbovirus vector populations in
662 heterogeneous landscapes. *J Appl Ecol* 2019;56:1674-86.
- 663 32. Jasper M, Schmidt TL, Ahmad NW, Sinkins SP, Hoffmann AA. A genomic approach to inferring
664 kinship reveals limited intergenerational dispersal in the yellow fever mosquito. *Mol Ecol Resour*
665 2019;19:1254-64.
- 666 33. Mancini MV, Ant TH, Herd CS, et al. High temperature cycles result in maternal transmission
667 and dengue infection differences between *Wolbachia* strains in *Aedes aegypti*. *bioRxiv* 2020.
- 668 34. Ross PA, Wiwatanaratnabutr I, Axford JK, White VL, Endersby-Harshman NM, Hoffmann AA.
669 *Wolbachia* infections in *Aedes aegypti* differ markedly in their response to cyclical heat stress. *PLoS*
670 *Pathog* 2017;13:e1006006.
- 671 35. Ross PA, Ritchie SA, Axford JK, Hoffmann AA. Loss of cytoplasmic incompatibility in
672 *Wolbachia*-infected *Aedes aegypti* under field conditions. *PLoS Negl Trop Dis* 2019;13:e0007357.
- 673 36. Cattarino L, Rodriguez-Barraquer I, Imai N, Cummings DAT, Ferguson NM. Mapping global
674 variation in dengue transmission intensity. *Sci Transl Med* 2020;12.

675

676 **Acknowledgments**

677 The authors acknowledge the municipality of Niterói for their partnership and logistical support for
678 this study.

679

680