

1 Evaluation of spike protein antigens for SARS-CoV-2

2 serology

3 Suraj Jagtap^{a#}, Ratnasri K^{b#}, Priyanka Valloly^{a#}, Rakhi Sharma^a, Satyaghosh Maurya^a, Anushree
4 Gaigore^a, Chitra Ardhya^c, Dayananda S. Biligi^c, Bapu Koundinya Desiraju^d, Uma Chandra Mouli
5 Natchu^e, Deepak Kumar Saini^{b,f}, Rahul Roy^{a,b,*}

6
7 ^a Department of Chemical Engineering, Indian Institute of Science, Bangalore, 560012 India

8 ^b Centre for BioSystems Science and Engineering, Indian Institute of Science, Bangalore, 560012
9 India

10 ^c Department of Pathology, Bangalore Medical College and Research Institute, Bangalore,
11 560002 India

12 ^d Translational Health Science and Technology Institute, NCR Biotech Science Cluster,
13 Faridabad, 121001 India

14 ^e Division of Infectious Diseases, St. John's Research Institute, Bangalore, 560034 India

15 ^f Department of Molecular Reproduction, Development and Genetics, Indian Institute of Science,
16 Bangalore, 560012 India

17
18 # Contributed equally to this work.

19
20 * Corresponding author: Rahul Roy (rahulroy@iisc.ac.in)

21

22

23

24 Highlights

- 25 • Spike trimer displays the highest antibody titer in SARS-CoV-2 infections among spike
26 protein antigens.
- 27 • Spike trimer IgG ELISA displays a sensitivity of 50% within six days and 86.2% after 14
28 days from onset of symptoms.
- 29 • IgA and IgG responses to spike trimer antigen were comparable and concomitant in time
30 after infection.
- 31 • 16% (IgG) and 15% (IgA) of COVID-19 RT-PCR positive patients did not seroconvert even
32 after 21 days from onset of symptoms.

33

34 Abstract

35 Keywords: SARS-CoV-2, serology, Spike trimer ELISA

36

37 **Background:** Spike protein domains are being used in various serology-based assays to detect
38 prior exposure to SARS-CoV-2 virus. However, there has been limited comparison of human
39 antibody titers against various spike protein antigens among COVID-19 infected patients.

40 **Methods:** We compared four spike proteins (RBD, S1, S2 and a stabilized spike trimer (ST))
41 representing commonly used antigens for their reactivity to human IgG antibodies using indirect
42 ELISA in serum from COVID-19 patients and pre-2020 samples. ST ELISA was also compared
43 against the EUROIMMUN IgG ELISA test. Further, we estimated time appropriate IgG and IgA
44 seropositivity rates in COVID-19 patients using a panel of sera samples collected longitudinally
45 from the day of onset of symptoms (DOS).

46 **Results:** Among the four spike antigens tested, the ST demonstrated the highest sensitivity
47 (86.2%; 95% CI: 77.8-91.7%), while all four antigens showed high specificity to COVID-19 sera
48 (94.7-96.8%). 13.8% (13/94) of the samples did not show seroconversion in any of the four
49 antigen-based assays. In a double-blinded head-to-head comparison, ST based IgG ELISA
50 displayed a better sensitivity (87.5%, 95%CI: 76.4-93.8%) than the EUROIMMUN IgG ELISA
51 (67.9%, 95% CI: 54.8-78.6%). Further, in ST-based assays, we found 48% and 50%
52 seroconversion in the first six days (from DOS) for IgG and IgA antibodies, respectively, which
53 increased to 84% (IgG) and 85% (IgA) for samples collected ≥ 22 days DOS.

54 **Conclusions:** Comparison of spike antigens demonstrates that spike trimer protein is a superior
55 option as an ELISA antigen for COVID-19 serology.

56

57 **Introduction**

58 COVID-19 pandemic caused by the Severe Acute Respiratory Syndrome Coronavirus 2 (SARS-
59 CoV-2) has already crossed 97 million detected cases and over 2 million deaths worldwide till
60 date [1]. As the pandemic continues, we need accurate and sensitive tests to assess the
61 prevalence, disease burden and the level of population immunity against the virus. With the
62 introduction of multiple vaccines and several ongoing vaccine trials, identifying prior exposure or
63 immunogenicity of the vaccine in individuals becomes critical to the development of vaccination
64 and public health strategies.

65 Nucleic acid-based tests that detect viral RNA are widely used to diagnose active infection in
66 SARS-CoV-2 infected individuals [2,3]. In contrast, immunological tests like serological assays
67 detect the level of human antibody response to the infection in symptomatic as well as the large
68 fraction of asymptomatic infections [4–7]. Immuno-assays detect antigen-specific IgA, IgM and
69 IgG immunoglobulins (antibodies) from body fluids like serum or plasma. Viral antigen-specific
70 antibodies can be detected in SARS-CoV-2 exposed individuals within 5-12 days post-onset of
71 symptoms (POS) for IgM and IgA antibodies and 14 days for IgG antibodies [8,9]. IgG antibodies
72 are long-lived, detectable for at least 8 months, making them promising recent and long term
73 markers of exposure to SARS-CoV-2 [10].

74 Serological assays with nucleocapsid or spike protein of SARS-CoV-2 as capturing antigen have
75 been widely developed and reported, as these antigens are highly immunogenic [11,12].
76 Nucleocapsid protein bound to the viral RNA is significantly conserved among the coronaviruses,
77 contributing to false positives in immunoassays [13,14]. The spike (S) protein decorates the
78 exterior of SARS-CoV-2 virus and helps in host cell entry [15–17]. Anti-spike antibodies also
79 demonstrate high virus neutralization efficacy [18,19]. The spike glycoprotein is a clove-shaped
80 trimeric protein with each unit consisting of the S1 head and the S2 stalk. The Receptor Binding
81 Domain (RBD) of the S1 head is responsible for binding to the ACE2 receptor on the cellular
82 membrane, initiating cell entry [16,20]. Due to the large size (153 KDa) of S protein and challenges

83 with achieving proper protein folding, it is difficult to express in bacteria and provides poor yields
84 using traditional mammalian expression systems. Capture antigens used for serological assays
85 should be easy to express and purify, with high yield and stability. Recently, the prefusion state
86 of SARS-CoV-2 spike trimer (ST) protein was stabilized by the addition of 6 prolines that improved
87 thermal stability and expression yield in mammalian cell suspension culture, making it a promising
88 antigen for SARS-CoV-2 antibody assays [21].

89 In this study, we evaluated the ST protein as a potential capture antigen for ELISA and compared
90 it with different subunits of S protein, namely, S1, S2 and RBD to assess IgG antibody titers in
91 SARS-CoV-2 positive and pre-pandemic sera. We also used ST protein to elucidate IgG and IgA
92 antibody response dynamics with time-stratified samples (≤ 6 , 7-14, 15-21 and ≥ 22 days POS).
93 Further, we benchmarked the ST protein ELISA against an FDA approved (EUROIMMUN)
94 serology ELISA kit.

95

96 **Materials and methods**

97 *Sample collection*

98 For COVID-19 samples, 1-2 ml of blood was drawn from patients who had tested positive for
99 SARS-CoV-2 by RT-PCR test. One set of serum samples (n=69) of COVID-19 patients were
100 obtained from individuals hospitalized at Bangalore Medical College and Research Institute
101 (BMCRI) between April-May 2020. All these samples were collected ≥ 15 days post-onset of
102 symptoms or RT-PCR positivity (POS/RT). A separate set of serum samples (n=100; collected
103 between March-August 2020) were obtained from COVID-19 biorepository of Translational Health
104 Science and Technology Institute, Delhi (THSTI) that were time stratified along the course of
105 COVID-19 infection (25 samples each from day 0-6, 7-14, 15-21 and ≥ 22 days POS). For COVID-
106 19 negative controls, serum samples collected during 2018-19 from healthy donors (n=33) and
107 dengue patients (n=61, Panbio dengue IgG/IgM capture ELISA kits, 01PE10/01PE20) and stored
108 in -80°C were used. We also tested the control samples for Influenza A/B antibodies (Immunolab

109 Influenza A/B IgG ELISA, ILE-IFA01/ILE-IFB01). Informed consent from patients was received as
110 per study protocols approved by the Institute Ethics Committees of the institutes where samples
111 were collected and assays were performed.

112

113 *Protein expression and purification*

114 The plasmids for RBD (pCAGGS vector containing the human codon-optimized RBD (amino acids
115 319-541) SARS-CoV-2, Wuhan-Hu-1 spike glycoprotein, GenBank: MN908947; a gift from Florian
116 Krammer, Mount Sinai, New York) and the ST protein (HexaPro; a gift from Jason McLellan,
117 University of Texas, Austin) were purified from DH5 α strain of *E. coli*. The plasmids were
118 transfected into Expi293F cells grown using Expi293 expression medium. The cells were grown
119 in a cell culture incubator (37°C, \geq 80% relative humidity and 8% CO₂) on an orbital shaker (130
120 rpm). Transfection was done at a final cell density of 3 \times 10⁶ viable cells/ml using ExpiFectamine
121 293 transfection kit as per kit's instructions. Culture media were harvested after 5 days post-
122 transfection. ST protein was purified using Gravity Flow Strep-Tactin XT resin, whereas RBD
123 protein was purified by HisTrap FF Crude histidine-tagged column on AKTA-Start FPLC system
124 and concentrated using Centricon filter spin columns. Average purified protein yields of 12 mg/l
125 and 61 mg/l were achieved for ST and RBD protein respectively. Spike protein subunits S1 (Native
126 Antigen, REC31806) and S2 (Native Antigen, REC31807) for SARS-CoV-2 were commercially
127 purchased.

128

129 *Human IgG and IgA SARS-CoV-2 ELISA*

130 Microtiter plates (Thermo Fisher, 442404) were coated with 50 μ l antigen at a concentration of 5
131 μ g/ml in 0.1 M sodium carbonate-bicarbonate buffer (pH 9.6) and incubated overnight at 4°C.
132 Excess unbound antigen was removed by washing the wells thrice with 200 μ l wash buffer (0.1%
133 Tween 20 in PBS) using an automated plate washer (Tecan HydroFlex). After washing, 100 μ l of
134 blocking buffer (10 mg/ml BSA, 0.05% Tween 20 in PBS) was added to the wells and plates were

135 incubated at room temperature (RT) for 1 h with gentle shaking, followed by washing. Serum
136 samples (50 μ l) diluted 1:100 times in PBS with 1 mg/ml BSA were added to the wells. After 30
137 min of incubation at RT, plates were washed 5 times with 300 μ l of wash buffer. 50 μ l of
138 horseradish peroxidase-conjugated goat anti-Human IgG (GeNei, HPO2) or IgA specific (Sigma-
139 Aldrich, A0295) antibody diluted 1:3000 in PBS, 0.1 mg/ml BSA, and 0.05% Tween 20 was added
140 to the wells and incubated at RT for 30 min. Excess antibody-enzyme conjugate was removed by
141 washing the wells 5 times with 300 μ l wash buffer. 50 μ l of chromogenic tetramethylbenzidine
142 (TMB) substrate was added, and plates were incubated in the dark with constant shaking. The
143 reaction was stopped after 10 min by adding 50 μ l of stop solution (8.5 M acetic acid and 0.5 M
144 sulfuric acid). Absorbance was measured at 450 nm using a microplate reader (Thermo Scientific
145 Varioskan Flash). Background signal for each sample was estimated by running the same assay
146 without any antigen coating. Corrected OD value was obtained by subtracting the background
147 signal for each sample from its respective OD value in the presence of the antigen. The cut-off
148 value was calculated based on the mean and standard deviation (SD) of the control samples' OD
149 values as mean + 3SD.

150 Antigen concentration for ELISA was determined by titrating the antigens at different
151 concentrations till signal saturation. The ST reactivity to SARS specific antibodies was tested with
152 an ELISA titration of the SARS Spike specific antibody CR3022 (Native Antigen MAB12422,
153 Supplementary Figure 1). Diluted serum was titrated, and IgG ELISA was performed using ST
154 with COVID-19 positive and control samples to determine the optimal sera dilution
155 (Supplementary Figure 2). We selected 1:100 sera dilution for performing all the ELISAs based
156 on the high correlation between area under the sera dilution curves and the signal contrast
157 between COVID-19 and control samples (Supplementary Figure 2c-d).

158 Head-to-head comparison of ST ELISA and EUROIMMUN Anti-SARS-CoV-2 (IgG) ELISA (S1
159 protein-based serology kit approved by FDA and ICMR, EI 2606-9601 G [22]) was performed in

160 a double-blind format where the experimenters were blind to the RT-PCR and seropositivity
161 results. EUROIMMUN ELISA was performed as per the manufacturer's instructions.

162 *Data analysis*

163 All statistical analyses and visualization were done using custom-written python codes and
164 GraphPad Prism software (v8.4.3). Unpaired two-tailed Student's t-test was used to compare the
165 COVID-19 positive and negative groups. Confidence intervals were calculated using
166 Wilson/Brown's method [23].

167

168 **Results**

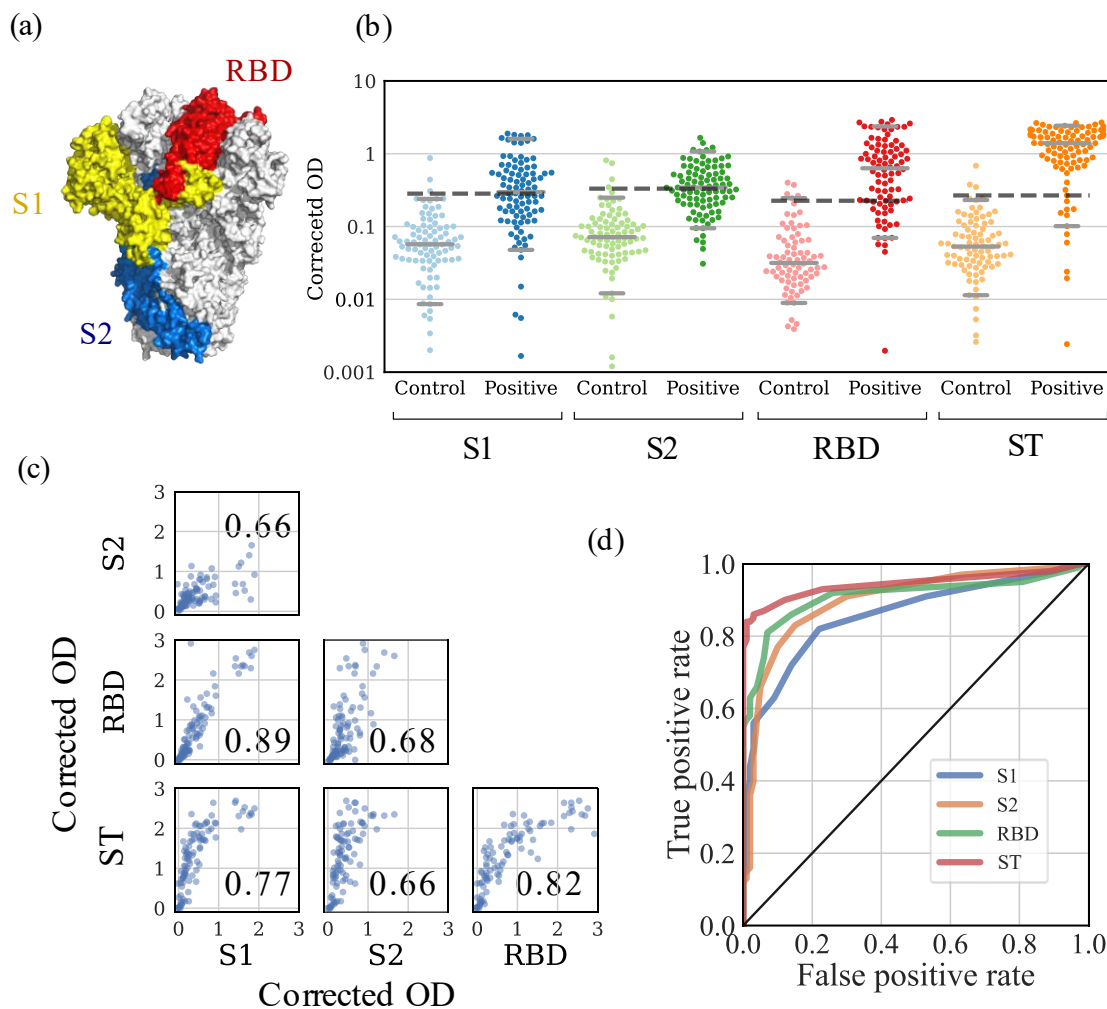
169 *Comparison between different spike antigens for human IgG antibodies*

170 We compared four different spike protein antigens (S1, S2, RBD and ST) that represent different
171 protein segments commonly being used to evaluate serum reactivity among SARS-CoV-2
172 patients (Figure 1a). 94 COVID-19 samples collected ≥ 15 days DOS/RT, and 94 control samples
173 were tested for the presence of spike-specific IgG antibodies (Figure 1b). We noted that in-house
174 purified RBD and ST performed better than commercially procured S1 and S2 in terms of
175 sensitivity and intensity of the positive sample signal. ST showed the highest sensitivity (86.2%)
176 followed by RBD (69.9%), while S1 and S2 domains showed very low sensitivity (51.5% and
177 50.0%, respectively) (Table 1). 13 COVID-19 samples were found below the cut-off values for all
178 four antigens.

179 Among control samples, 64.9% (61/94) were positive for Dengue IgG ELISA, 96.8% (91/94) for
180 Influenza A and 97.8% (92/94) for Influenza B IgG antibodies. This confirmed that these control
181 samples had other detectable virus specific antibodies. Despite this, we obtained specificity
182 $>94.7\%$ for all the four antigens (Table 1), suggesting low cross-reactivity of spike antigens to
183 antibodies for these viruses.

184 S1, RBD and ST antigens displayed a high correlation among themselves (Pearson's correlation
185 coefficient (PCC) >0.75 for all cases). S2 subunit displayed a lower correlation (PCC 0.66-0.68)

186 to others. This is likely because the structurally buried S2 domain in the spike protein is less
 187 accessible to the antibodies. Nevertheless, the significant correlation across all four antigens
 188 (Figure 1c, $PCC > 0.65$), suggests that antibody responses across all spike antigens are consistent
 189 and that they are all detectable in our ELISA platform.



190

191 Figure 1: Reactivity of COVID-19 positive (n=94 samples collected ≥ 15 days from day of -onset of symptoms or RT-
 192 PCR positivity) and control sera (n=94) to different antigens (a) Trimeric prefusion spike protein structure (PDB: 5XLR
 193 [24]) shows the antigens used in the ELISA (red: RBD, yellow and red: S1 domain, blue: S2 domain, two monomers
 194 are represented in white) (b) Corrected OD (450 nm) value for S1, S2, RBD and ST protein for each sample is
 195 represented by a point on the scatter plot. Median, 5th percentile and 95th percentile values are shown by horizontal
 196 grey lines. Dotted lines indicate the cut-off values. (mean + 3 x standard deviation of corrected OD values of control

197 samples). (c) Correlation between the four antigens. Corrected OD values for each antigen are plotted against the
198 values for the other antigens. Pearson's correlation coefficient for each pair of antigens is shown on the scatter plots.
199 (d) Receiver operating characteristic curve for each antigen.

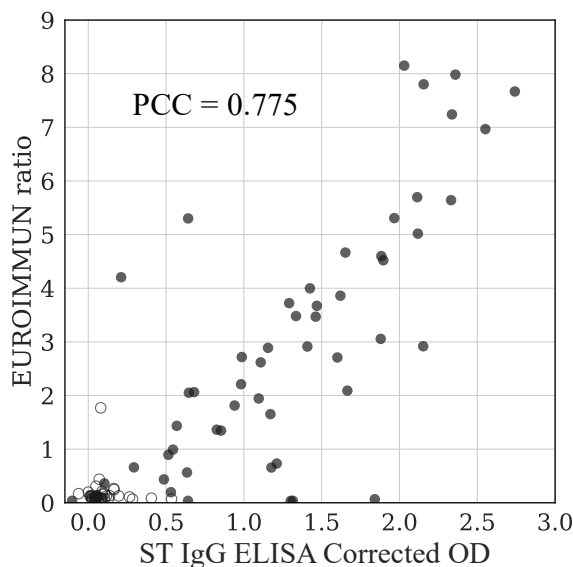
200 ST detected higher OD values, possibly because of the larger number of epitopes available on
201 the full-length soluble trimeric protein. It also displayed the highest contrast between COVID-19
202 positive and control groups (Figure 1b). Receiver operating characteristic curves indicates that
203 ST is the best candidate for serological testing with the highest area under the curve (Figure 1d).
204 Further, when the ST-based ELISA was repeated in 93 samples (56 COVID-19 positive samples
205 and 37 control samples) in a blind manner, we obtained highly reproducible values (PCC=0.986,
206 Supplementary Figure 3).

207 Table 1: Sensitivity and specificity with 95% confidence intervals (CI) for different spike antigen-based assays.

Antigen	Sensitivity (%)	Specificity (%)
S1	51.1 (41.1-60.9)	96.8 (91.0-99.1)
S2	50.0 (40.1-59.9)	95.7 (89.6-98.3)
RBD	69.9 (59.9-78.3)	94.7 (88.1-97.7)
ST	86.2 (77.8-91.7)	96.8 (91.0-99.1)

208
209 *Comparison with commercial IgG serology kit*
210 Corrected OD values obtained from ST-based ELISA and ratios obtained from EUROIMMUN test
211 show a good correlation in a double-blind comparison (Figure 2). However, the ST-based ELISA
212 (87.5% (95% CI: 76.4-93.8%)) performed better than the EUROIMMUN IgG kit (67.9% (95% CI:
213 54.8-78.6%)) in terms of sensitivity (for samples ≥ 15 days DOS/RT). Our results are comparable
214 to values reported by the internal validation report of EUROIMMUN (61.1% for 11-21 days DOS
215 and 81.1% for >11 days post PCR positivity [22]) and lesser than those obtained by others (84.4%

216 [25], 89.5% [26]). Specificity values of both methods were comparable - 94.6% (95% CI: 82.3-
217 99.0%) for ST-based ELISA and 97.3% (95% CI: 86.2-99.9%) for EUROIMMUN kit.

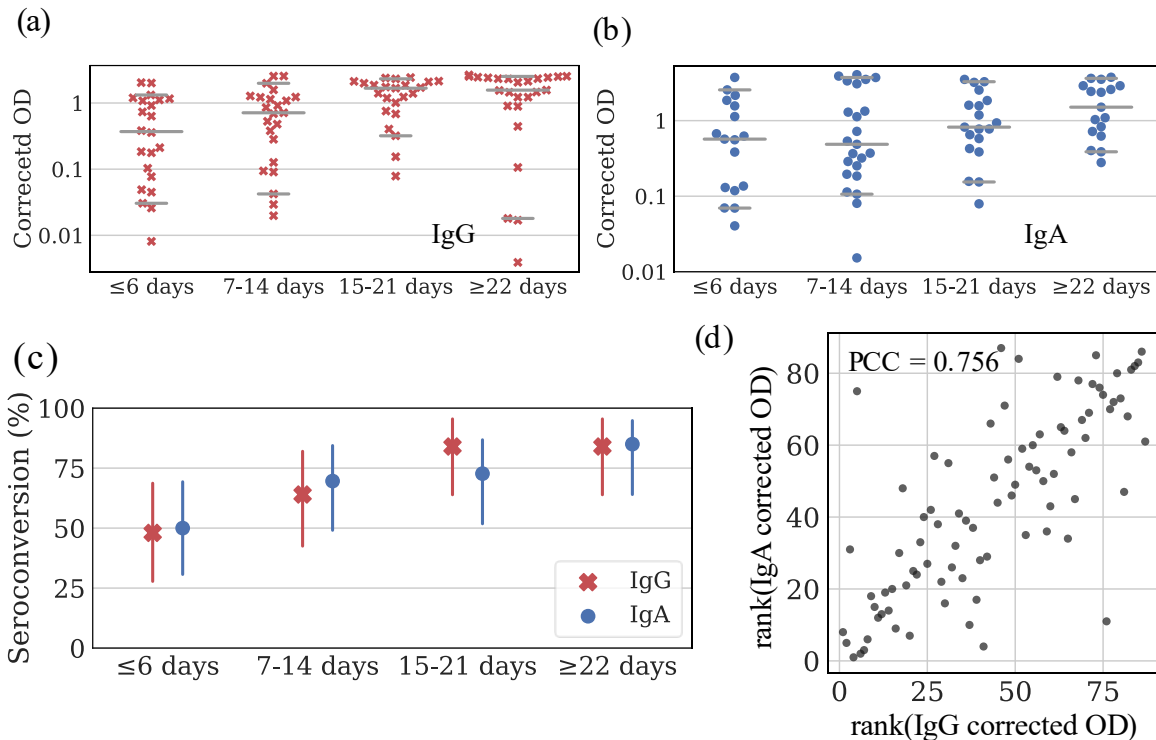


218
219 Figure 2: Head-to-head double-blinded comparison of EUROIMMUN Anti-SARS-CoV-2 ELISA (IgG) kit and ST ELISA.
220 COVID-19 positive samples (filled circles) and control samples (empty circles) are plotted and Pearson's correlation
221 coefficient (PCC) between the two test values is indicated for the COVID-19 positive samples.

222 *Dynamics of IgG and IgA response in SARS-CoV-2 infections*

223 We performed ELISA assays for spike specific IgG and IgA antibodies in sera collected at different
224 time points (≤ 6 , 7-14, 15-21 and ≥ 22 days POS) using ST protein. Median OD values of IgG and
225 IgA response increased with time (Figure 3a-b; IgG: 0.21, 0.69, 1.40, 1.57, IgA: 0.26, 0.49, 0.77,
226 1.06 for the respective time intervals). Also, the proportion of patients who demonstrated
227 seroconversion increased with time (Figure 3c; IgG: 48.0%, 64.0%, 84.0%, 84.0%, IgA: 50.0,
228 69.6, 72.7, 85.0% for the respective time intervals). In both cases, about 50% of the patients had
229 seroconverted within 6 days from DOS. These findings are in line with previous reports that have
230 shown median time for seroconversion based on spike specific IgG antibodies to be 14 days POS

231 [9,27,28]. A high correlation (PCC = 0.76, Figure 3d) was observed between ranks of IgG and IgA
232 values for each sample suggesting a comparable and concomitant response to the infection.



233

234 Figure 3: Dynamics of ST protein-specific IgG and IgA response. (a-b) Corrected OD values of COVID-19 positive
235 samples collected at different time points post-onset of symptoms (n=25 for each time interval). Value for each sample
236 is represented by a point on the scatter plot. Median, 5th percentile and 95th percentile values are shown by horizontal
237 gray lines. (c) Percentage seroconversion of patients based on IgG and IgA response to ST protein ELISA as a function
238 of time. Vertical lines show 95% confidence intervals (d) Comparison between ranks of the IgG and IgA corrected OD
239 values.

240 Some individuals did not show detectable spike-specific antibodies (16% for IgG, 15% for IgA)
241 even after 21 days from DOS. This could be due to asymptomatic/mild infection which has been
242 reported to display low antibody titers [6]. We cannot rule-out false-positive PCR results
243 contributing to some of these cases.

244

245

246 **Discussion**

247 The trimeric spike protein from SARS-CoV-2 is critical for cellular entry and is prominently
248 displayed on the virus. Our results revealed that ST protein displayed better reactivity to COVID-
249 19 positive sera when compared to S1, S2 and RBD spike subunit proteins consistent with the
250 larger number of accessible antibody epitopes on ST. While we did not perform neutralization
251 assays, previous studies have shown that the antibodies against RBD are strongly correlated with
252 neutralization of the virus [18,19,29]. Several other regions of the Spike protein, including a region
253 away from receptor binding site [30], S1 domain [31] and S2 domain [32–34] are targets of
254 neutralizing antibodies. Therefore, a high ELISA signal against the ST protein is suggestive of
255 higher levels of a broader spectrum of virus-neutralizing antibodies.

256 IgG and IgA antibody dynamics show seroconversion in about half of the patients within 6 days
257 POS (also reported earlier, [9,27,35]). Considering the low sensitivity of many existing rapid
258 antigen tests [36–38], a combination of the rapid antigen detection with antibody tests can be
259 employed to increase the detection efficiency of COVID-19 cases during early infection.

260 Some COVID-19 RT-PCR positive samples did not show reactivity against any of the four
261 antigens. Several other studies have reported limited seroconversion at the time of sera collection
262 [6,39,40]. Nevertheless, highly sensitive serology assays can be critical in determining the sero-
263 prevalence in a community as well as help in assessing the immune response/ immunogenicity
264 of vaccines including the temporal course of antibody responses. Our results show that the human
265 antibody response is consistent among the spike antigens, and the spike trimer maybe the best
266 choice of antigen for COVID-19 serology.

267

268 **Author contributions**

269 SJ, RK, PV and RR conceptualized the study; CA, DSB, SJ, RK, PV and RR devised methods,
270 collected samples and clinical data; SJ, RK, PV, RS, SM, AG, CA, DKS, DSB and RR provided
271 reagents and analysed samples; SJ, RK, PV, RR and BKD curated and/or analysed data; SJ, RK,

272 PV, UCMN and RR drafted the manuscript with inputs from others; RR coordinated and
273 supervised the study. All authors approved the final draft of the manuscript.

274

275 **Declaration of competing interests**

276 The authors declare that there is no conflict of interest.

277

278 **Acknowledgements**

279 This research has been conducted with the contribution of NCR Biotech Science Cluster
280 BIOREPOSITORY, DBT India consortium for COVID-19 Research and RGUHS-IISc Dengue
281 biomarker research consortium. We thank Florian Krammer, Jason McLellan, Raghavan
282 Varadarajan, Sameer Malladi for providing useful reagents; Sunaina Banerjee and Rohit Dutta for
283 valuable discussions and Khantesh Agrawal for anonymizing the samples. This work was
284 supported by the Indian Institute of Science and CSR funding by Capgemini India. Funding
285 agencies had no role in the design, execution, or interpretation of the study.

286

287 **References**

288 [1] E. Dong, H. Du, L. Gardner, An interactive web-based dashboard to track COVID-19 in
289 real time, *The Lancet Infectious Diseases*. 20 (2020) 533–534.
290 [https://doi.org/10.1016/S1473-3099\(20\)30120-1](https://doi.org/10.1016/S1473-3099(20)30120-1).

291 [2] N. Sethuraman, S.S. Jeremiah, A. Ryo, Interpreting Diagnostic Tests for SARS-CoV-2,
292 *JAMA*. 323 (2020) 2249–2251. <https://doi.org/10.1001/jama.2020.8259>.

293 [3] J.P. Mathuria, R. Yadav, Rajkumar, Laboratory diagnosis of SARS-CoV-2 - A review of
294 current methods, *Journal of Infection and Public Health*. 13 (2020) 901–905.
295 <https://doi.org/10.1016/j.jiph.2020.06.005>.

- 296 [4] Y. Galipeau, M. Greig, G. Liu, M. Driedger, M.-A. Langlois, Humoral Responses and
297 Serological Assays in SARS-CoV-2 Infections, *Frontiers in Immunology*. 11 (2020) 3382.
298 <https://doi.org/10.3389/fimmu.2020.610688>.
- 299 [5] G.P. Milani, L. Dioni, C. Favero, L. Cantone, C. Macchi, S. Delbue, M. Bonzini, E.
300 Montomoli, V. Bollati, B. Albetti, C. Bandi, T. Bellini, M. Buscaglia, C. Cantarella, M.
301 Carugno, S. Casartelli, S. D'Alessandro, F. de Chiara, I. Eberini, L. Ferrari, M. Ferraroni,
302 L. Galastri, C. Galli, M. Hoxha, S. Iodice, C. la Vecchia, A. Manenti, I. Manini, S. Marchi, J.
303 Mariani, E. Pariani, A.C. Pesatori, F. Rota, M. Ruscica, T. Schioppo, L. Tarantini, C.M.
304 Trombetta, M. Vicenzi, G. Zanchetta, Serological follow-up of SARS-CoV-2 asymptomatic
305 subjects, *Scientific Reports*. 10 (2020) 20048. [https://doi.org/10.1038/s41598-020-77125-](https://doi.org/10.1038/s41598-020-77125-8)
306 8.
- 307 [6] Q.X. Long, X.J. Tang, Q.L. Shi, Q. Li, H.J. Deng, J. Yuan, J.L. Hu, W. Xu, Y. Zhang, F.J.
308 Lv, K. Su, F. Zhang, J. Gong, B. Wu, X.M. Liu, J.J. Li, J.F. Qiu, J. Chen, A.L. Huang, Clinical
309 and immunological assessment of asymptomatic SARS-CoV-2 infections, *Nature*
310 *Medicine*. 26 (2020) 1200–1204. <https://doi.org/10.1038/s41591-020-0965-6>.
- 311 [7] K. Oved, L. Olmer, Y. Shemer-Avni, T. Wolf, L. Supino-Rosin, G. Prajgrod, Y. Shenhar, I.
312 Payorsky, Y. Cohen, Y. Kohn, V. Indenbaum, R. Lazar, V. Geylis, M.T. Oikawa, E. Shinar,
313 E. Stoyanov, L. Keinan-Boker, R. Bassal, S. Reicher, R. Yishai, A. Bar-Chaim, R. Doolman,
314 Y. Reiter, E. Mendelson, Z. Livneh, L.S. Freedman, Y. Lustig, Multi-center nationwide
315 comparison of seven serology assays reveals a SARS-CoV-2 non-responding
316 seronegative subpopulation, *EClinicalMedicine*. 29–30 (2020) 100651.
317 <https://doi.org/10.1016/j.eclinm.2020.100651>.
- 318 [8] L. Guo, L. Ren, S. Yang, M. Xiao, D. Chang, F. Yang, C.S. dela Cruz, Y. Wang, C. Wu,
319 Y. Xiao, L. Zhang, L. Han, S. Dang, Y. Xu, Q.W. Yang, S.Y. Xu, H.D. Zhu, Y.C. Xu, Q. Jin,
320 L. Sharma, L. Wang, J. Wang, Profiling early humoral response to diagnose novel

- 321 coronavirus disease (COVID-19), *Clinical Infectious Diseases*. 71 (2020) 778–785.
322 <https://doi.org/10.1093/cid/ciaa310>.
- 323 [9] J. Zhao, Q. Yuan, H. Wang, W. Liu, X. Liao, Y. Su, X. Wang, J. Yuan, T. Li, J. Li, S. Qian,
324 C. Hong, F. Wang, Y. Liu, Z. Wang, Q. He, Z. Li, B. He, T. Zhang, Y. Fu, S. Ge, L. Liu, J.
325 Zhang, N. Xia, Z. Zhang, Antibody Responses to SARS-CoV-2 in Patients with Novel
326 Coronavirus Disease 2019, *Clinical Infectious Diseases*. 71 (2020) 2027–2034.
327 <https://doi.org/10.1093/cid/ciaa344>.
- 328 [10] J.M. Dan, J. Mateus, Y. Kato, K.M. Hastie, E.D. Yu, C.E. Faliti, A. Grifoni, S.I. Ramirez,
329 S. Haupt, A. Frazier, C. Nakao, V. Rayaprolu, S.A. Rawlings, B. Peters, F. Krammer, V.
330 Simon, E.O. Saphire, D.M. Smith, D. Weiskopf, A. Sette, S. Crotty, Immunological memory
331 to SARS-CoV-2 assessed for up to 8 months after infection, *Science*. (2021) eabf4063.
332 <https://doi.org/10.1126/science.abf4063>.
- 333 [11] L. Premkumar, B. Segovia-Chumbez, R. Jadi, D.R. Martinez, R. Raut, A.J. Markmann,
334 C. Cornaby, L. Bartelt, S. Weiss, Y. Park, C.E. Edwards, E. Weimer, E.M. Scherer, N.
335 Roupheal, S. Edupuganti, D. Weiskopf, L. v. Tse, Y.J. Hou, D. Margolis, A. Sette, M.H.
336 Collins, J. Schmitz, R.S. Baric, A.M. de Silva, The receptor-binding domain of the viral spike
337 protein is an immunodominant and highly specific target of antibodies in SARS-CoV-2
338 patients, *Science Immunology*. 5 (2020) eabc8413.
339 <https://doi.org/10.1126/SCIIMMUNOL.ABC8413>.
- 340 [12] S. Jiang, C. Hillyer, L. Du, Neutralizing Antibodies against SARS-CoV-2 and Other
341 Human Coronaviruses, *Trends in Immunology*. 41 (2020) 355–359.
342 <https://doi.org/10.1016/j.it.2020.03.007>.
- 343 [13] Y. Yamaoka, S.S. Jeremiah, K. Miyakawa, R. Saji, M. Nishii, I. Takeuchi, A. Ryo, Whole
344 Nucleocapsid Protein of Severe Acute Respiratory Syndrome Coronavirus 2 May Cause
345 False-Positive Results in Serological Assays, *Clinical Infectious Diseases*. (2020).
346 <https://doi.org/10.1093/cid/ciaa637>.

- 347 [14] A.P. Katz, F.J. Civantos, Z. Sargi, J.M. Leibowitz, E.A. Nicolli, D. Weed, A.E. Moskovitz,
348 A.M. Civantos, D.M. Andrews, O. Martinez, G.R. Thomas, False-positive reverse
349 transcriptase polymerase chain reaction screening for SARS-CoV-2 in the setting of urgent
350 head and neck surgery and otolaryngologic emergencies during the pandemic: Clinical
351 implications, *Head and Neck*. 42 (2020) 1621–1628. <https://doi.org/10.1002/hed.26317>.
- 352 [15] J. Shang, G. Ye, K. Shi, Y. Wan, C. Luo, H. Aihara, Q. Geng, A. Auerbach, F. Li, Structural
353 basis of receptor recognition by SARS-CoV-2, *Nature*. 581 (2020) 221–224.
354 <https://doi.org/10.1038/s41586-020-2179-y>.
- 355 [16] Y. Huang, C. Yang, X. feng Xu, W. Xu, S. wen Liu, Structural and functional properties of
356 SARS-CoV-2 spike protein: potential antivirus drug development for COVID-19, *Acta
357 Pharmacologica Sinica*. 41 (2020) 1141–1149. [https://doi.org/10.1038/s41401-020-0485-](https://doi.org/10.1038/s41401-020-0485-4)
358 4.
- 359 [17] J. Shang, Y. Wan, C. Luo, G. Ye, Q. Geng, A. Auerbach, F. Li, Cell entry mechanisms of
360 SARS-CoV-2, *Proceedings of the National Academy of Sciences of the United States of
361 America*. 117 (2020) 11727 LP – 11734. <https://doi.org/10.1073/pnas.2003138117>.
- 362 [18] M.S. Suthar, M.G. Zimmerman, R.C. Kauffman, G. Mantus, S.L. Linderman, W.H.
363 Hudson, A. Vanderheiden, L. Nyhoff, C.W. Davis, O. Adekunle, M. Affer, M. Sherman, S.
364 Reynolds, H.P. Verkerke, D.N. Alter, J. Guarner, J. Bryksin, M.C. Horwath, C.M. Arthur, N.
365 Saakadze, G.H. Smith, S. Edupuganti, E.M. Scherer, K. Hellmeister, A. Cheng, J.A.
366 Morales, A.S. Neish, S.R. Stowell, F. Frank, E. Ortlund, E.J. Anderson, V.D. Menachery,
367 N. Roupael, A.K. Mehta, D.S. Stephens, R. Ahmed, J.D. Roback, J. Wrammert, Rapid
368 Generation of Neutralizing Antibody Responses in COVID-19 Patients, *Cell Reports
369 Medicine*. 1 (2020) 100040. <https://doi.org/10.1016/j.xcrm.2020.100040>.
- 370 [19] A. Wajnberg, F. Amanat, A. Firpo, D.R. Altman, M.J. Bailey, M. Mansour, M. McMahon,
371 P. Meade, D.R. Mendu, K. Muellers, D. Stadlbauer, K. Stone, S. Strohmeier, V. Simon, J.
372 Aberg, D.L. Reich, F. Krammer, C. Cordon-Cardo, Robust neutralizing antibodies to SARS-

- 373 CoV-2 infection persist for months, *Science*. 370 (2020) 1227–1230.
374 <https://doi.org/10.1126/science.abd7728>.
- 375 [20] A.C. Walls, Y.J. Park, M.A. Tortorici, A. Wall, A.T. McGuire, D. Veessler, Structure,
376 Function, and Antigenicity of the SARS-CoV-2 Spike Glycoprotein, *Cell*. 181 (2020) 281-
377 292.e6. <https://doi.org/10.1016/j.cell.2020.02.058>.
- 378 [21] C.L. Hsieh, J.A. Goldsmith, J.M. Schaub, A.M. DiVenere, H.C. Kuo, K. Javanmardi, K.C.
379 Le, D. Wrapp, A.G. Lee, Y. Liu, C.W. Chou, P.O. Byrne, C.K. Hjorth, N. v. Johnson, J.
380 Ludes-Meyers, A.W. Nguyen, J. Park, N. Wang, D. Amengor, J.J. Lavinder, G.C. Ippolito,
381 J.A. Maynard, I.J. Finkelstein, J.S. McLellan, Structure-based design of prefusion-
382 stabilized SARS-CoV-2 spikes, *Science*. 369 (2020) 1501–1505.
383 <https://doi.org/10.1126/SCIENCE.ABD0826>.
- 384 [22] EUROIMMUN, Anti-SARS-CoV-2 ELISA (IgG) Instruction for use, 2020.
385 <https://www.fda.gov/media/137609/download>.
- 386 [23] L.D. Brown, T.T. Cai, A. das Gupta, Interval estimation for a binomial proportion,
387 *Statistical Science*. 16 (2001) 101–117. <https://doi.org/10.1214/ss/1009213286>.
- 388 [24] M. Gui, W. Song, H. Zhou, J. Xu, S. Chen, Y. Xiang, X. Wang, Cryo-electron microscopy
389 structures of the SARS-CoV spike glycoprotein reveal a prerequisite conformational state
390 for receptor binding, *Cell Research*. 27 (2017) 119–129.
391 <https://doi.org/10.1038/cr.2016.152>.
- 392 [25] I. Montesinos, D. Gruson, B. Kabamba, H. Dahma, S. van den Wijngaert, S. Reza, V.
393 Carbone, O. Vandenberg, B. Gulbis, F. Wolff, H. Rodriguez-Villalobos, Evaluation of two
394 automated and three rapid lateral flow immunoassays for the detection of anti-SARS-CoV-
395 2 antibodies, *Journal of Clinical Virology*. 128 (2020) 104413.
396 <https://doi.org/10.1016/j.jcv.2020.104413>.
- 397 [26] J. van Elslande, E. Houben, M. Depypere, A. Brackenier, S. Desmet, E. André, M. van
398 Ranst, K. Lagrou, P. Vermeersch, Diagnostic performance of seven rapid IgG/IgM antibody

- 399 tests and the Euroimmun IgA/IgG ELISA in COVID-19 patients, *Clinical Microbiology and*
400 *Infection*. 26 (2020) 1082–1087. <https://doi.org/10.1016/j.cmi.2020.05.023>.
- 401 [27] R. Wölfel, V.M. Corman, W. Guggemos, M. Seilmaier, S. Zange, M.A. Müller, D.
402 Niemeyer, T.C. Jones, P. Vollmar, C. Rothe, M. Hoelscher, T. Bleicker, S. Brünink, J.
403 Schneider, R. Ehmann, K. Zwirgmaier, C. Drosten, C. Wendtner, Virological assessment
404 of hospitalized patients with COVID-2019, *Nature*. 581 (2020) 465–469.
405 <https://doi.org/10.1038/s41586-020-2196-x>.
- 406 [28] K.K.W. To, O.T.Y. Tsang, W.S. Leung, A.R. Tam, T.C. Wu, D.C. Lung, C.C.Y. Yip, J.P.
407 Cai, J.M.C. Chan, T.S.H. Chik, D.P.L. Lau, C.Y.C. Choi, L.L. Chen, W.M. Chan, K.H. Chan,
408 J.D. Ip, A.C.K. Ng, R.W.S. Poon, C.T. Luo, V.C.C. Cheng, J.F.W. Chan, I.F.N. Hung, Z.
409 Chen, H. Chen, K.Y. Yuen, Temporal profiles of viral load in posterior oropharyngeal saliva
410 samples and serum antibody responses during infection by SARS-CoV-2: an observational
411 cohort study, *The Lancet Infectious Diseases*. 20 (2020) 565–574.
412 [https://doi.org/10.1016/S1473-3099\(20\)30196-1](https://doi.org/10.1016/S1473-3099(20)30196-1).
- 413 [29] F. Amanat, D. Stadlbauer, S. Strohmeier, T.H.O. Nguyen, V. Chromikova, M. McMahon,
414 K. Jiang, G.A. Arunkumar, D. Jurczynszak, J. Polanco, M. Bermudez-Gonzalez, G. Kleiner,
415 T. Aydililo, L. Miorin, D.S. Fierer, L.A. Lugo, E.M. Kojic, J. Stoeber, S.T.H. Liu, C.
416 Cunningham-Rundles, P.L. Felgner, T. Moran, A. García-Sastre, D. Caplivski, A.C. Cheng,
417 K. Kedzierska, O. Vapalahti, J.M. Hepojoki, V. Simon, F. Krammer, A serological assay to
418 detect SARS-CoV-2 seroconversion in humans, *Nature Medicine*. 26 (2020) 1033–1036.
419 <https://doi.org/10.1038/s41591-020-0913-5>.
- 420 [30] M. Yuan, N.C. Wu, X. Zhu, C.C.D. Lee, R.T.Y. So, H. Lv, C.K.P. Mok, I.A. Wilson, A highly
421 conserved cryptic epitope in the receptor binding domains of SARS-CoV-2 and SARS-CoV,
422 *Science*. 368 (2020) 630–633. <https://doi.org/10.1126/science.abb7269>.
- 423 [31] M. Hoffmann, H. Kleine-Weber, S. Schroeder, N. Krüger, T. Herrler, S. Erichsen, T.S.
424 Schiergens, G. Herrler, N.H. Wu, A. Nitsche, M.A. Müller, C. Drosten, S. Pöhlmann, SARS-

- 425 CoV-2 Cell Entry Depends on ACE2 and TMPRSS2 and Is Blocked by a Clinically Proven
426 Protease Inhibitor, *Cell*. 181 (2020) 271-280.e8. <https://doi.org/10.1016/j.cell.2020.02.052>.
- 427 [32] S. Xia, Y. Zhu, M. Liu, Q. Lan, W. Xu, Y. Wu, T. Ying, S. Liu, Z. Shi, S. Jiang, L. Lu,
428 Fusion mechanism of 2019-nCoV and fusion inhibitors targeting HR1 domain in spike
429 protein, *Cellular and Molecular Immunology*. 17 (2020) 765–767.
430 <https://doi.org/10.1038/s41423-020-0374-2>.
- 431 [33] J. Duan, X. Yan, X. Guo, W. Cao, W. Han, C. Qi, J. Feng, D. Yang, G. Gao, G. Jin, A
432 human SARS-CoV neutralizing antibody against epitope on S2 protein, *Biochemical and
433 Biophysical Research Communications*. 333 (2005) 186–193.
434 <https://doi.org/10.1016/j.bbrc.2005.05.089>.
- 435 [34] H.A. Elshabrawy, M.M. Coughlin, S.C. Baker, B.S. Prabhakar, Human Monoclonal
436 Antibodies against Highly Conserved HR1 and HR2 Domains of the SARS-CoV Spike
437 Protein Are More Broadly Neutralizing, *PLoS ONE*. 7 (2012) e50366.
438 <https://doi.org/10.1371/journal.pone.0050366>.
- 439 [35] W. Liu, L. Liu, G. Kou, Y. Zheng, Y. Ding, W. Ni, Q. Wang, L. Tan, W. Wu, S. Tang, Z.
440 Xiong, S. Zheng, Evaluation of nucleocapsid and spike protein-based enzyme-linked
441 immunosorbent assays for detecting antibodies against SARS-CoV-2, *Journal of Clinical
442 Microbiology*. 58 (2020) e00461-20. <https://doi.org/10.1128/JCM.00461-20>.
- 443 [36] A. Scohy, A. Anantharajah, M. Bodéus, B. Kabamba-Mukadi, A. Verroken, H. Rodriguez-
444 Villalobos, Low performance of rapid antigen detection test as frontline testing for COVID-
445 19 diagnosis, *Journal of Clinical Virology*. 129 (2020) 104455.
446 <https://doi.org/10.1016/j.jcv.2020.104455>.
- 447 [37] H. Gremmels, B.M.F. Winkel, R. Schuurman, A. Rosingh, N.A.M. Rigter, O. Rodriguez,
448 J. Ubijaan, A.M.J. Wensing, M.J.M. Bonten, L.M. Hofstra, Real-life validation of the
449 Panbio™ COVID-19 antigen rapid test (Abbott) in community-dwelling subjects with

450 symptoms of potential SARS-CoV-2 infection, *EClinicalMedicine*. (2020)
451 2020.10.16.20214189. <https://doi.org/10.1016/j.eclinm.2020.100677>.

452 [38] ICMR, Advisory on Use of Rapid Antigen Detection Test for COVID-19, 2020.
453 https://www.icmr.gov.in/pdf/covid/strategy/Advisory_for_rapid_antigen_test14062020.pdf.

454 [39] E. Brochot, B. Demey, A. Touzé, S. Belouzard, J. Dubuisson, J.L. Schmit, G. Duverlie,
455 C. Francois, S. Castelain, F. Helle, Anti-spike, Anti-nucleocapsid and Neutralizing
456 Antibodies in SARS-CoV-2 Inpatients and Asymptomatic Individuals, *Frontiers in*
457 *Microbiology*. 11 (2020) 2468. <https://doi.org/10.3389/fmicb.2020.584251>.

458 [40] H.M. Staines, D.E. Kirwan, D.J. Clark, E.R. Adams, Y. Augustin, R.L. Byrne, M. Coccozza,
459 A.I. Cubas-Atienzar, L.E. Cuevas, M. Cusinato, B.M.O. Davies, M. Davis, P. Davis, A.
460 Duvoix, N.M. Eckersley, D. Forton, A.J. Fraser, G. Garrod, L. Hadcocks, Q. Hu, M.
461 Johnson, G.A. Kay, K. Klekotko, Z. Lewis, D.C. Macallan, J. Mensah-Kane, S. Menzies, I.
462 Monahan, C.M. Moore, G. Nebe-Von-Caron, S.I. Owen, C. Sainter, A.A. Sall, J. Schouten,
463 C. Williams, J. Wilkins, K. Woolston, J.R.A. Fitchett, S. Krishna, T. Planche, Dynamics of
464 IgG seroconversion and pathophysiology of COVID-19 infections, *MedRxiv*. (2020)
465 2020.06.07.20124636. <https://doi.org/10.1101/2020.06.07.20124636>.

466