

1 **Article Summary Line:** The COVID-19 pandemic has had an unprecedented impact on the
2 global community. Here we provide epidemiological and genomic details of the early stages of
3 the pandemic on Reunion Island.

4 **Running Title:** Genomics insight into early SARS-CoV-2 in Reunion Island

5 **Keywords:** SARS-CoV-2, Coronavirus, COVID-19, Genomics, Oxford Nanopore Technologies,
6 Reunion Island

7 **Title:** Genomic insights into early SARS-CoV-2 strains isolated in Reunion Island

8 **Authors:** *David A Wilkinson, Camille Lebarbenchon, Célestine Atyame, Sarah Hafsia, Marie-
9 Christine Jaffar-Bandjee, Luce Yemadje-Menudier, Sébastien Tanaka, Olivier Meilhac, *Patrick
10 Mavingui

11 * Corresponding authors

12 **Affiliations:**

13 Université de La Réunion, UMR Processus Infectieux en Milieu Insulaire Tropical (PIMIT)

14 INSERM 1187, CNRS 9192, IRD 249, Sainte-Clotilde, La Réunion, France. (DA Wilkinson, C
15 Lebarbenchon, C Atyamé, S Hafsia, P Mavingui)

16 Centre Hospitalier Universitaire de la Réunion, Saint-Denis, France (O Meilhac, M-C Jaffar-
17 Bandjee)

18 Santé Publique France, Saint Denis, France (L Yemadje-Menudier)

19 Assistance Publique-Hôpitaux de Paris (AP-HP), Department of Anesthesiology and Critical
20 Care Medicine, Bichat-Claude Bernard Hospital, Paris, France (S Tanaka)

- 21 Réunion Island University, French Institute of Health and Medical Research (INSERM), U1188
- 22 Diabetes atherothrombosis Réunion Indian Ocean (DÉTROIT), CYROI Platform, Saint-Denis de
- 23 La Réunion, Réunion, France. Réunion Island University-affiliated Hospital, Réunion, France.
- 24 (O Meilhac, S Tanaka)
- 25

26 **Abstract**

27 The relative isolation of many island communities provides some protection from the COVID-19
28 pandemic, as imported cases can be limited and traced effectively. Until recently, this was true
29 for the population of the French overseas department, Reunion Island, where only limited
30 numbers of autochthonous cases were observed prior to August 2020. Since the report of the first
31 case of COVID-19, contact tracing has been carried out for each new case identified in Reunion
32 Island to identify transmission and clusters. To contribute to the public health response and
33 understand the diffusion of SARS-Cov-2 strains in Reunion Island, we established in-house
34 genome sequencing capability in Reunion using Oxford nanopore technology (MinION) as an
35 inexpensive option for genomic typing of SARS-CoV-2 lineages on the island, and cross-
36 validated typing results between viral isolation methods and different sequencing technologies.
37 The results of our work during the early phase of the epidemics are presented herein.

38 **Introduction:**

39 Severe acute respiratory syndrome coronavirus 2 (SARS-CoV-2) was first identified as
40 the causative agent of coronavirus disease 2019 (COVID-19) in China in December 2019 after
41 its emergence from wild animal populations[1]. Since, it has infected more than 45,000,000
42 individuals with 1.2 million deaths worldwide (at the time of writing). Its transmission has been
43 rapid and widespread despite global intervention measures (such as quarantine and travel
44 restrictions) due largely to the fact that viral transmission can occur from asymptomatic
45 individuals and pre-symptomatic individuals[2]. This coupled with its relatively high case
46 fatality rate[3] means that SARS-CoV-2 remains a public health emergency of unprecedented
47 scale.

48 The response to this pandemic has also been of an unprecedented scale. Governments
49 have restructured healthcare systems to accommodate increased testing capacity for improved
50 contact tracing, and genomics has played an important role in improving our understanding of
51 COVID-19 transmission pathways and outbreaks[4,5]. As the number of acquired mutations in
52 the SARS-CoV-2 genome has been relatively low over the course of the pandemic, whole
53 genome sequencing has been essential to allow accurate strain typing, which in turn allows cases
54 to be associated based on genetic similarity of the infecting strains. One study from Australia
55 estimated that the use of genomic typing in conjunction with classical epidemiological tracing
56 improved the case assignment rate by as much as 16% [6]. Next generation sequencing has
57 therefore been of great importance during the SARS-CoV-2 pandemic and emerging
58 technologies such as Oxford Nanopore sequencing have made genomic approaches more
59 accessible: To date, there have been more than 100,000 SARS-CoV-2 genomes deposited in the
60 Global Initiative on Sharing All Influenza Data (GISAID) database[7].

61 Reunion Island is an overseas department of France situated in the Indian Ocean and is
62 largely subject to the same regulations concerning COVID-19-related practices as mainland
63 France and the other French overseas departments. Reunion Island has a population of
64 approximately 850,000 people who live mainly in coastal regions. The population is relatively
65 young, with people 65 years or over representing 8.1 % fewer of the population than in mainland
66 France (2020 institute of national statistics data, www.insee.fr/fr/statistiques). The first case of
67 COVID-19 was reported in Reunion on 11th March 2020, four days before French regulations
68 imposed strict lockdown measures which significantly reduced mobility across the country[8].
69 Prior to this in February, all direct commercial flights between Reunion and China had been
70 suspended. In addition, lockdown measures provided effective protection for the Reunion
71 population, meaning that numbers of cases remained low and were mainly imported as local
72 inhabitants returned from areas of active SARS-CoV-2 circulation. Importantly, during this time
73 most inbound flights were canceled, returning passengers were obliged to undergo a 14-day
74 confinement period upon arrival, and all returning individuals were closely monitored by
75 regional health authorities. Limited local virus circulation occurred in Reunion at this time, with
76 approximately 70 % imported cases and 30 % autochthonous cases (defined as most likely local
77 transmission with no history of travel), with a limited severity [9]. Subsequently, Reunion
78 avoided the first pandemic wave that swept through Europe and placed the European population
79 at the epicenter of the pandemic from March to April 2020. A timeline of reported cases and
80 important events in the epidemiology of COVID-19 on Reunion Island is presented in Figure 1.
81 Here we isolated and provided genomic data of SARS-CoV-2 strains circulating during the early
82 phase of the epidemics on Reunion Island.

83 **Methodology:**

84 **Patients and samples**

85 Nasopharyngeal specimens were recovered either from patients admitted to CHU
86 Reunion or from outpatients, all with laboratory confirmed COVID-19. Before use, we
87 ascertained the presence of viral genomic ARN in each specimen swab by real time RT-qPCR
88 (described below). Samples were handled and stored at -80°C in a biosecurity level three
89 virology laboratory. Consent was obtained from each patient, classified as non-opposition, at the
90 time of entry to the hospital.

91 **RNA Extraction and RT-qPCR**

92 Nucleic acids were extracted using the QIAamp Viral RNA mini kit (QIAGEN, Valencia,
93 California, USA) and eluted in 60 µL of AVE buffer. Reverse transcription was performed on 10
94 µL of RNA using the ProtoScript II Reverse Transcriptase and Random Primer 6 (New England
95 BioLabs, Ipswich, MA, USA) as previously described[10]. cDNAs were tested for the presence
96 of the N and Nsp14 genes using the PCR protocol published by The University of Hong Kong
97 ([https://www.who.int/publications/m/item/molecular-assays-to-diagnose-covid-19-summary-](https://www.who.int/publications/m/item/molecular-assays-to-diagnose-covid-19-summary-table-of-available-protocols)
98 [table-of-available-protocols](https://www.who.int/publications/m/item/molecular-assays-to-diagnose-covid-19-summary-table-of-available-protocols)). PCR were performed with the QuantiNova Probe RT-PCR Kit
99 (QIAGEN, Valencia, California, USA) and 5 µL of cDNA in a CFX96 Touch™ Real-Time PCR
100 Detection System (Bio-Rad, Hercules, CA, USA).

101 **Viral isolation and production**

102 SARS-CoV-2 strains were isolated in the African green monkey kidney cell line, Vero
103 E6. Briefly, cells were cultured in a 25 cm² flask containing 5 ml of Eagle medium (MEM:
104 Gibco/Invitrogen, Carlsbad, CA, USA) supplemented with 5% heat-inactivated fetal bovine
105 serum (FBS), 2 mmol/L L-Glutamine, 1 mmol/L sodium pyruvate, 100 U/mL of penicillin, 100
106 µg/mL of streptomycin and 0.5 µg/mL of Amphotericin B (PAN Biotech, Aidenbach, Germany),
107 at 37°C under a 5% CO₂ atmosphere. When cell density reached approximately 80%, cells were

108 rinsed once with MEM medium supplemented with 2% FBS, then 50 to 100 μ l of SARS-CoV-2-
109 positive swab specimen was mixed with 2 mL MEM 2% FBS and layered on the Vero cell
110 monolayer. After 2 h of incubation the inoculum was removed, cells were rinsed once and 6 mL
111 of fresh MEM 2% FBS medium was added. Flasks were incubated at 37°C in a 5% CO₂
112 atmosphere. Cultured were checked daily. Cell lines demonstrated a cytopathic effect 3 to 5 days
113 post-infection. Supernatants of positive cultures were recovered, centrifuged at 400 X g for 5 min
114 at 4°C, then aliquoted and stored at -80°C until used.

115 For viral production, a total of 100 μ l supernatant of positive culture was used to infect a
116 monolayer of Vero cells grown in 75 cm² flask as above. After three days, cytopathic effect was
117 visible and the supernatant was recovered, cleared by centrifugation, aliquoted and stored at -
118 80°C.

119 Viral titration

120 Titration was performed by plaque-forming assay. Vero cells (cultured as above) were
121 seeded in 6-well culture plates. Tenfold dilutions of SARS-CoV-2 solution were made in MEM
122 2% FBS culture medium and 500 μ l of each dilution was added to the cells in duplicate. After an
123 incubation of 2 h at 37°C under a 5% CO₂ atmosphere, unabsorbed viral particles were removed
124 and 2 ml of culture medium supplemented with 0,8% carboxymethylcellulose (CMC; Sigma-
125 Aldrich, Saint-Quentin-Fallavier, France) was added to each well and incubation was extended
126 for 5 days. The CMC overlay was carefully removed, and the cells were fixed with 2 mL of 3.7
127 % paraformaldehyde in PBS. The plates were incubated at 37°C for 20 min. The cells were then
128 rinsed once with PBS and stained with 0.5% crystal violet in 20% ethanol. Plaques were visually
129 counted and expressed as plaque-forming units per mL (PFU/mL).

130 Nanopore (MinION) Sequencing and Analysis:

131 Genomes were sequenced from viruses originally infecting four independent patients.

132 Two samples (RUN-PIMIT1 and RUN-PIMIT2) were from couple of travelers returning from

133 France mainland. Sample RUN-PIMIT8 was obtained from a tourist originating from Greece

134 whereas sample RUN-PIMIT20 was quoted as real autochthonous case with unidentified contact

135 with an imported case. We combined different sequencing technologies to cross-validate the

136 sequences generated by different protocols. We also re-sequenced the same isolates from

137 different passage histories to examine whether cell-line isolation may result in the accumulation

138 of mutations.

139 In total, ten SARS-COV2 genomes were sequenced on a single Oxford Nanopore

140 Technologies FLO-MIN106D (R9.4.1) flowcell using the Artic Network's overlapping amplicon

141 protocol[11,12]. Following first-strand cDNA synthesis (as above), all sample preparation

142 methods followed the nCoV-2019 sequencing protocol version 2

143 (<https://dx.doi.org/10.17504/protocols.io.bdp7i5m>). Briefly, genomic material was amplified in

144 two independent PCR reactions using version 3 primer pools obtained from of the Artic network

145 website (<https://github.com/artic-network/artic-ncov2019>). PCR products were pooled, dA-tailed

146 using the NEBNext® Ultra™ II End Repair/dA-Tailing Module then barcoded using the

147 Nanopore Native Barcoding Expansion kit (EXP-NBD104). Barcoded amplicons were then

148 purified using a 0.4x volume of AMPure-XP SPRI beads, washing the beads with an excess

149 volume of Nanopore's small fragment buffer (SFB) to ensure that un-ligated barcode molecules

150 were removed. Purified amplicons were then pooled in equimolar proportions before adapter

151 ligation and sequencing.

152 The sequencing run was left for 24 hours and stopped when predicted coverage exceeded
153 1000-fold for each genome. Basecalling and demultiplexing were performed using guppy
154 (v4.0.11). Basecalling used default parameters in accurate mode, and demultiplexing was
155 performed using the “--require_barcodes_both_ends” parameter to minimize sample crosstalk.
156 Reads were then assembled using Medaka v1.0.3 (<https://nanoporetech.github.io/medaka/>) as
157 part of the Artic network bioinformatics standard operating procedure
158 (<https://artic.network/ncov-2019/ncov2019-bioinformatics-sop.html>), subsampling amplicon
159 coverage to 400x and using genome accession MN908947.3 for read mapping. Geneious
160 v9.1.8[13] was used to inspect and curate mapped sequence data. Consensus base-calling
161 required a minimum of 30-fold coverage.

162 **Illumina Sequencing and Analysis:**

163 Four of the SARS-CoV-2 samples (2 isolates and 2 swabs) that were sequenced using the
164 ONT amplicon protocol were additionally sequenced using an Illumina shotgun method from
165 unamplified cDNA in order to complete genomic loci that were poorly amplified by the tiling
166 PCR and to allow cross validation of the ONT sequencing methodology against the Illumina gold
167 standard.

168 Briefly, sequencing libraries were generated from 10 ng of cDNA using the Celero™
169 PCR Workflow with Enzymatic fragmentation (DNA-Seq) following the manufacturer’s
170 instructions. Sequencing was performed on the MiSeq platform, with 1 * 170 bp single end
171 reads. Demultiplexed sequences were provided by the sequencing company (Biofidal, Lyon,
172 France). Sequences were quality trimmed and adapters removed using Trimmomatic v0.39.
173 Trimmed reads were mapped to reference sequence MN908947.3 using minimap2 v.2.17-

174 r941[14]. Geneious v9.1.8[13] was used to inspect and curate mapped sequence data and
175 consensus sequences.

176 **Genome typing:**

177 Assembled genomes were assigned to global major lineages using pangolin v.2.0.5[15] to
178 compare to the pangoLEARN database (version from 20th July 2020), default parameters were
179 used for quality control filtering and probability scores for lineage calling.

180 **Results and Discussion:**

181 MinION sequencing generated complete genomic data sets for six of the eight sequenced
182 isolates and for one swab out of two (Table 1). The remaining three samples (two isolates and
183 one swab) demonstrated high Ct values when detecting viral cDNA by qPCR, suggesting that the
184 concentrations of virus in these samples were low. PCR amplification was not uniform in these
185 samples and genomic assemblies had short gaps where 30-fold coverage was not achieved. The
186 primers used in the tiling protocol are unable to target the 3' and 5' extremities of the virus, and
187 therefore all assemblies were missing 54 bases from the 5' extremity and 67 bases from the 3'
188 extremity.

189 Illumina shotgun sequencing produced near-complete genome assemblies for four of the
190 samples (two isolates and two swabs), again only excluding 5' and 3' extremities of the genome,
191 which had limited coverage that varied between isolates. By combining Illumina and MinION
192 data mapped to the same reference strain we were able to improve the genomic assemblies for
193 these four genome sequences. Furthermore, in genomic regions that were successfully sequenced
194 by both approaches, no disagreements were observed in consensus sequences generated by
195 MinION and Illumina sequencing. However, MinION assemblies had a slightly higher
196 proportion of ambiguous base calls.

197 Sequencing data are summarized in Table 1.

198 Resequencing of isolated passage variants produced identical sequence variants to the
199 parental strain in each instance (Table 2), suggesting that the process of viral isolation and
200 passaging (in this case in Vero E6 cells) does not select for mutant variants.

201 Typing assigned all genomes to pangolin lineage B.1, either belonging to GISAID
202 lineage G, or GH (Table 2) which (along with lineage GR) are the prevailing lineages circulating
203 globally at the time of writing [16]. Phylogenetic analysis identified three different sequence
204 variants, which differed from each other by a maximum of seven mutations (Figure 2).

205 **Conclusion:**

206 Our findings provide support that MinION sequencing can be successfully applied for
207 rapid sequencing and generation of genomic data in remote locations, such as on Reunion Island.
208 Paired comparison with genomes obtained with Illumina sequencing further highlight that the
209 quality of the generated sequences can be used confidently in molecular epidemiology and
210 phylodynamic studies.

211 Additionally, we observed that viral isolation, limited passaging and production in Vero
212 E6 cell lines were not associated with the selection of mutations that could bias genomic typing
213 results. This is important due to the strong genetic similarity between prevailing SARS-CoV-2
214 lineages and because cell-line based viral amplification is a useful method for extracting
215 increased quantities of viral material when direct sequencing of swabs with low viral loads may
216 provide incomplete genomic data.

217 At the time of writing, Reunion Island is facing its first wave of COVID-19 infection,
218 with more than 400 cases of COVID-19 reported weekly[17]. As has been demonstrated

219 elsewhere, genomic data can be used to significantly improve the case assignment rate and
220 contact tracing measures that help to mitigate future disease[6]. Phylodynamic investigations
221 based on these data can also inform the timing and origin of viral introduction, as well as their
222 local transmission dynamics and epidemiological characteristics. Thus, the capacity to perform
223 in-house, rapid and comparatively cheap genomic typing of SARS-CoV-2 isolates will hopefully
224 play an important role in improving Reunion Island's response to the COVID-19 pandemic.
225 These analyses are intended to continue on a larger local scale in Reunion Island in order to
226 understand the circulation of SARS-CoV-2 during the current, largely autochthonous, COVID-
227 19 epidemic wave.

228 **Acknowledgments**

229 This research was funded by Université de La Réunion (COVID-19 emergency seed funding).

230 **Conflicts of interest:**

231 Authors declare no conflicts of interest.

232 **References**

233 1. Zhou P, Yang X Lou, Wang XG, Hu B, Zhang L, Zhang W, et al. A pneumonia outbreak
234 associated with a new coronavirus of probable bat origin. *Nature*. 2020.

235 doi:10.1038/s41586-020-2012-7

236 2. Mizumoto K, Kagaya K, Zarebski A, Chowell G. Estimating the asymptomatic proportion

237 of coronavirus disease 2019 (COVID-19) cases on board the Diamond Princess cruise

238 ship, Yokohama, Japan, 2020. *Eurosurveillance*. 2020. doi:10.2807/1560-

239 7917.ES.2020.25.10.2000180

240 3. Verity R, Okell LC, Dorigatti I, Winskill P, Whittaker C, Imai N, et al. Estimates of the
241 severity of coronavirus disease 2019: a model-based analysis. *Lancet Infect Dis*. 2020.

242 doi:10.1016/S1473-3099(20)30243-7

243 4. Geoghegan JL, Ren X, Storey M, Hadfield J, Jelley L, Jefferies S, et al. Genomic

244 epidemiology reveals transmission patterns and dynamics of SARS-CoV-2 in Aotearoa

245 New Zealand. *medRxiv*. 2020. doi:10.1101/2020.08.05.20168930

246 5. Candido DS, Claro IM, de Jesus JG, Souza WM, Moreira FRR, Dellicour S, et al.

247 Evolution and epidemic spread of SARS-CoV-2 in Brazil. *Science* (80-). 2020.

248 doi:10.1126/science.abd2161

- 249 6. Rockett RJ, Arnott A, Lam C, Sadsad R, Timms V, Gray KA, et al. Revealing COVID-19
250 transmission in Australia by SARS-CoV-2 genome sequencing and agent-based modeling.
251 Nat Med. 2020. doi:10.1038/s41591-020-1000-7
- 252 7. Shu Y, McCauley J. GISAID: Global initiative on sharing all influenza data – from vision
253 to reality. Eurosurveillance. 2017. doi:10.2807/1560-7917.ES.2017.22.13.30494
- 254 8. Ruktanonchai NW, Floyd JR, Lai S, Ruktanonchai CW, Sadilek A, Rente-Lourenco P, et
255 al. Assessing the impact of coordinated COVID-19 exit strategies across Europe. Science
256 (80-). 2020. doi:10.1126/science.abc5096
- 257 9. COVID-19□: point épidémiologique à la Réunion du 13 août 2020. [cited 6 Nov 2020].
258 Available: [https://www.santepubliquefrance.fr/regions/ocean-indien/documents/bulletin-](https://www.santepubliquefrance.fr/regions/ocean-indien/documents/bulletin-regional/2020/covid-19-point-epidemiologique-a-la-reunion-du-13-aout-2020)
259 [regional/2020/covid-19-point-epidemiologique-a-la-reunion-du-13-aout-2020](https://www.santepubliquefrance.fr/regions/ocean-indien/documents/bulletin-regional/2020/covid-19-point-epidemiologique-a-la-reunion-du-13-aout-2020)
- 260 10. Lebarbenchon C, Ramasindrazana B, Joffrin L, Bos S, Lagadec E, Le Minter G, et al.
261 Astroviruses in bats, Madagascar. Emerg Microbes Infect. 2017;6: e58.
262 doi:10.1038/emi.2017.47
- 263 11. Quick J, Grubaugh ND, Pullan ST, Claro IM, Smith AD, Gangavarapu K, et al. Multiplex
264 PCR method for MinION and Illumina sequencing of Zika and other virus genomes
265 directly from clinical samples. Nat Protoc. 2017. doi:10.1038/nprot.2017.066
- 266 12. Grubaugh ND, Gangavarapu K, Quick J, Matteson NL, De Jesus JG, Main BJ, et al. An
267 amplicon-based sequencing framework for accurately measuring intrahost virus diversity
268 using PrimalSeq and iVar. Genome Biol. 2019. doi:10.1186/s13059-018-1618-7
- 269 13. Kearse M, Moir R, Wilson A, Stones-Havas S, Cheung M, Sturrock S, et al. Geneious

- 270 Basic: An integrated and extendable desktop software platform for the organization and
271 analysis of sequence data. *Bioinformatics*. 2012. doi:10.1093/bioinformatics/bts199
- 272 14. Li H. Minimap2: Pairwise alignment for nucleotide sequences. *Bioinformatics*. 2018.
273 doi:10.1093/bioinformatics/bty191
- 274 15. Rambaut A, Holmes EC, O’Toole Á, Hill V, McCrone JT, Ruis C, et al. A dynamic
275 nomenclature proposal for SARS-CoV-2 lineages to assist genomic epidemiology. *Nat*
276 *Microbiol*. 2020. doi:10.1038/s41564-020-0770-5
- 277 16. Mercatelli D, Giorgi FM. Geographic and Genomic Distribution of SARS-CoV-2
278 Mutations. *Front Microbiol*. 2020;11: 1800. doi:10.3389/fmicb.2020.01800
- 279 17. COVID-19□: point épidémiologique à la Réunion du 29 octobre 2020. [cited 6 Nov
280 2020]. Available: [https://www.santepubliquefrance.fr/regions/ocean-](https://www.santepubliquefrance.fr/regions/ocean-indien/documents/bulletin-regional/2020/covid-19-point-epidemiologique-a-la-reunion-du-29-octobre-2020)
281 [indien/documents/bulletin-regional/2020/covid-19-point-epidemiologique-a-la-reunion-](https://www.santepubliquefrance.fr/regions/ocean-indien/documents/bulletin-regional/2020/covid-19-point-epidemiologique-a-la-reunion-du-29-octobre-2020)
282 [du-29-octobre-2020](https://www.santepubliquefrance.fr/regions/ocean-indien/documents/bulletin-regional/2020/covid-19-point-epidemiologique-a-la-reunion-du-29-octobre-2020)
- 283 18. Year-letter Genetic Clade Naming for SARS-CoV-2 on Nextstrain.org. [cited 11 Sep
284 2020]. Available: <https://nextstrain.org/blog/2020-06-02-SARSCoV2-clade-naming>
- 285

286 Address for correspondence:

287 Dr David A Wilkinson, UMR Processus Infectieux en Milieu Insulaire Tropical (PIMIT)

288 INSERM 1187, CNRS 9192, IRD 249, 2 Rue Maxime Rivière, Sainte-Clotilde, La Réunion,

289 France. Email : david.wilkinson@univ-reunion.fr

290 Dr Patrick Mavingui, UMR Processus Infectieux en Milieu Insulaire Tropical (PIMIT) INSERM

291 1187, CNRS 9192, IRD 249, 2 Rue Maxime Rivière, Sainte-Clotilde, La Réunion, France.

292 Email : patrick.mavingui@cnrs.fr

ID	Swab (S) or Culture (C)	Isolation/ Passage Details ⁺	MinION, amplicon tiling				Illumina				Combined		
			Complete	Missing	Ambiguities	Coverage**	Complete	Missing	Ambiguities	Coverage	Complete ?	Missing	Ambiguities
hCoV-19/Réunion/RUN-PIMIT20	C	Vero E6	No	1.7 %	1	407x	Yes*	2.1 %	0	1500x	Yes*	0.1 %	
hCoV-19/Réunion/RUN-PIMIT1	S	NA	Yes*	0.4 %	0	435x	Yes*	2.1 %	0	3250x	Yes*	0.1 %	
hCoV-19/Réunion/RUN-PIMIT2	S	NA	No	1.5 %	1	356x	Yes*	2.4 %	0	675x	Yes*	0.2 %	
hCoV-19/Réunion/RUN-PIMIT8	C	Vero E6	Yes*	0.4 %	0	413x	Yes*	0.1 %	0	1700x	Yes*	0.1 %	
RUN-PIMIT1c	C	RUN-PIMIT1a, passage 1	Yes*	0.4 %	0	385x	-	-	-	-	-	-	-
RUN-PIMIT1d	C	RUN-PIMIT1c, passage 2	Yes*	0.4 %	0	423x	-	-	-	-	-	-	-
RUN-PIMIT1a	C	RUN-PIMIT1, Vero E6	No	1.4 %	0	336x	-	-	-	-	-	-	-
RUN-PIMIT1b	C	RUN-PIMIT1, Vero E6	Yes*	0.4 %	0	404x	-	-	-	-	-	-	-
RUN-PIMIT2a	C	RUN-PIMIT2, Vero E6	Yes*	0.4 %	0	394x	-	-	-	-	-	-	-
RUN-PIMIT20a	C	RUN-PIMIT20, Vero E6	Yes*	0.4 %	0	407x	-	-	-	-	-	-	-

* Genomes are regarded as complete if <2.5 % of the genome is missing from the 3' and 5' ends of the genome. Any genome containing consecutive ambiguities outside of the 3' and 5' regions is considered as incomplete.

** MinION coverage is calculated by mapping in Medaka after subsampling sequence coverage to a maximum of 400x per primer pair. Overlapping regions increase average coverage.

*** Genomic sequences were considered as identical if no polymorphisms were present. Base calls in Illumina data versus ambiguous calls in MinION data are not considered to be contradictory (unless the ambiguity is the base call in the Illumina sequence).

+ For cultured isolates, cell lines are indicated. For isolates that are resequenced from previous passages, corresponding parental strain is indicated.

294 Table 2. Lineage typing data of different isolates.

ID	Pangolin lineage	GISAID lineage	Year/Letter lineage*	Isolate history	Mutations from parent strain
hCoV-19/Réunion/RUN-PIMIT1	B.1	G	20A	Swab	NA
RUN-PIMIT1a	B.1	G	20A	1 st generation isolate	0
RUN-PIMIT1b	B.1	G	20A	1 st generation isolate	0
RUN-PIMIT1c	B.1	G	20A	2 nd generation passage	0
RUN-PIMIT1d	B.1	G	20A	3 rd generation passage	0
hCoV-19/Réunion/RUN-PIMIT2	B.1	G	20A	Swab	NA
RUN-PIMIT2a	B.1	G	20A	1 st generation isolate	0
hCoV-19/Réunion/RUN-PIMIT8	B.1	GH	20C	1 st generation isolate	NA
hCoV-19/Réunion/RUN-PIMIT20	B.1	G	20A	1 st generation isolate	NA
RUN-PIMIT20a	B.1	G	20A	2 nd generation passage	0

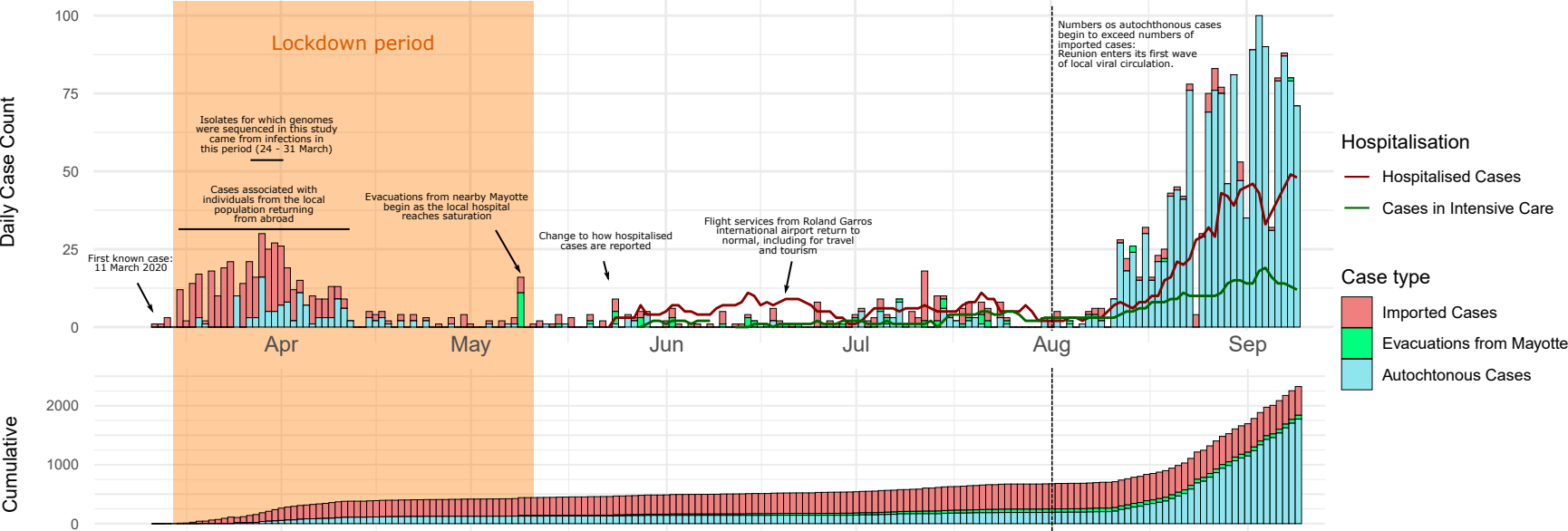
*Year/Letter lineage as defined by Hodcroft et al.[18]

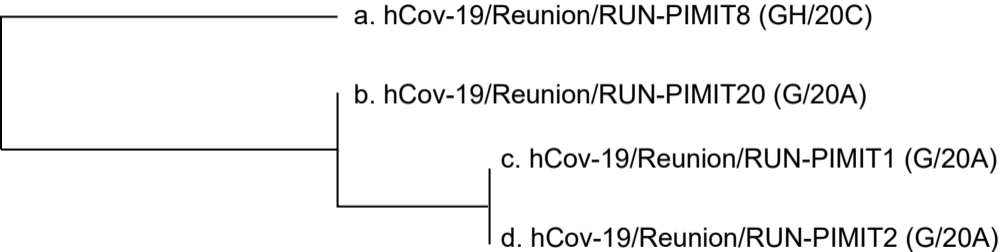
Reserved space. Do not place any text in this section. Include the mandatory author checklist or your manuscript will be returned. Use *continuous* line numbering in your manuscript.

295 Figure 1: Epidemiological timeline of COVID-19 cases in Reunion Island corresponding to the
296 first six months since the first identified cases (11th March 2020 – 11 September 2020).

297 Figure 2: Phylogenetic tree and pairwise mutation number between genomes of SARS-CoV-2
298 from independent cases in La Reunion.

299





a.	b.	c.	d.
0	7	7	7
7	0	2	2
7	2	0	0
7	2	0	0

Pairwise mutation number