

# Working Paper

## Association between COVID-19 Outcomes and Mask Mandates, Adherence, and Attitudes

Dhaval Adjudah<sup>1,6</sup>, Karthik Dinakar<sup>2</sup>, Matteo Chinazzi<sup>4</sup>, Samuel P. Fraiberger<sup>1,3,5</sup>, Alex Pentland<sup>2</sup>, Samantha Bates<sup>6</sup>, Kyle Staller<sup>7,9</sup>, Alessandro Vespignani<sup>4</sup>, and Deepak L. Bhatt<sup>8,9</sup>

<sup>1</sup>Connection Science, MIT

<sup>2</sup>Media Lab, MIT

<sup>3</sup>Development Data Group, World Bank

<sup>4</sup>Lab. for the Modeling of Biological and Socio-technical Systems, Northeastern University

<sup>5</sup>Department of Computer Science, New York University

<sup>6</sup>Center of Complex Interventions

<sup>7</sup>Massachusetts General Hospital

<sup>8</sup>Brigham and Women's Hospital

<sup>9</sup>Harvard Medical School

December 20, 2020

### Abstract

Using publicly available data, we quantify the impact of mask adherence and mask mandates on COVID-19 outcomes. We show that mask mandates are associated with a statistically significant decrease in daily new cases (-3.24 per 100K), deaths (-0.19 per 100K), and the proportion of hospital admissions (-2.47%) due to COVID-19 between February 1 and September 27, 2020. These effects are large, corresponding to 13% of the highest recorded number of cases, 20% of deaths, and 7% of admission proportion. We also find that mask mandates are linked to a 23.4 percentage point increase in mask adherence in four diverse states, and that mask adherence is associated with improved COVID-19 outcomes. Lastly, using a large novel survey in 68 countries, we find that community mask adherence and attitudes towards masks are associated with a reduction in COVID-19 cases and deaths. Our results have relevant policy implications, indicating the need to maintain and encourage mask-wearing.

As of December 2020, SARS-CoV-2, the virus responsible for COVID-19 has infected at least 66 million people worldwide and caused more than 1.5 million deaths [1]. Numerous studies have analyzed the role played by masks during the COVID-19 pandemic [2–6]: masks have been associated with a reduction in the infection rate among health care workers in a large hospital network [7], mask mandates have helped reduce the number of cases in the United States and in Germany [8–10], and simulations have shown that wearing a mask can protect against droplet infection by preventing the spread of viral particles [11–16]. Despite this evidence, there has been strong resistance against mask-wearing, begging the question of the role played by attitudes towards masks in determining COVID-19 outcomes, and whether mask mandates could lead to an increase in adherence [17–19]. Investigating these questions is a key component of an ongoing effort to determine how to design, implement and sustain the adoption of non-pharmaceutical interventions (NPIs) to curb the spread of the COVID-19 pandemic [20–25].

A significant limitation in investigating the effect of mask mandates, mask adherence, and attitudes towards masks on COVID-19 outcomes has been the lack of a consistent dataset capturing key variables of

# Working Paper

interest. Existing data on mask mandates sometimes disagree due to variations in start date and in the type of mandates being considered [26–28]. Furthermore, while numerous datasets record daily changes in COVID cases and deaths [29–31], they are rarely accompanied by NPI information. Additionally, longitudinal data on mask adherence has been missing until recently, even though there are significant on-going surveys [32,33] and computer vision-based efforts to estimate mask adherence from social media images and videos [34–37].

We therefore first create a dataset of state-level mask mandate start and end dates by manually reading each state government’s memos. We describe in detail our process for how we coded the mask mandate start and end dates for different types of mandates in the State-level Mandate Introduction Dates and Types section. We then undertake the task of unifying disparate public data sources\* to create a longitudinal dataset that can be used to investigate the effect of mask mandates on COVID-19 deaths and cases, as detailed in Section 1.1.

We then build on recent work using event study designs to estimate treatment effects in the context of the COVID-19 pandemic: the effect of NPIs (e.g. business closures and stay-at-home orders) on the volume of online searches related to unemployment [38], on social distancing in the US [39], on the airline industry [40], on stock markets worldwide [41–44], and on COVID-19 cases at the county level [45]. For background, the effect of the introduction of new policies (here, mask mandates) has been studied with a variety of techniques such as difference-in-differences [46], event studies [47] and regression discontinuity [48].

The event study framework is particularly well-suited for our purposes as it allows for the same state to be used both as treatment and control based on the timing of a mandate, which is critical because states introduced mask mandates at different dates over the course of the pandemic [38]. While the first mandates were implemented in April, the latest ones occurred in November, some states still having had no mandate as of this writing (Table B in Appendix B).

An event study design allows us to estimate the treatment effect associated with mask mandates on COVID-19 outcomes on each day following the introduction of the mandate relative to the day prior to its introduction. Our geographical unit of analysis are states to minimize peer-effects of neighboring counties’ mandates due to the underlying interdependence between county mobility patterns [49], as well as the fact that people living in one county often have to travel to a different county to get medical care, resulting in inconsistent accounting of COVID-19 health outcomes at the county level [50]. By contrast, patients rarely cross state borders to get medical help as health insurance in the US is predominantly state-based. See appendix section 3.2.1 for the full model specification.

Although previous work has investigated the effect of mask mandates on COVID-19 outcomes [7–10], our results are novel because our event study specification simultaneously accounts for the following: all 50 US states and the District of Columbia, longer timescales (up to 50 days after the introduction of a mandate, and for the time period between February 1 and September 27, 2020<sup>§</sup>), three COVID-19 outcomes: daily new confirmed daily cases, daily new confirmed deaths, and the proportion of daily new hospitalization admissions due to COVID-19.

To support our result of the effect of mask mandates on COVID-19 outcomes, we investigate the associated increase in mask adherence (i.e. the percentage of people who wear masks in public) following a mask mandate for the four states – Hawaii, Iowa, North Dakota and New Hampshire – for which adherence data [29] is available before and after the introduction of the mandate, as detailed in section 1.2. For the same states, we also investigate the effect of mask adherence itself on COVID-19 cases and deaths. As a final supporting analysis, we leverage a novel dataset [32] comprising 8 waves of survey data spanning July to October 2020 and totaling more than 479,000 responses from 68 countries in 51 languages to estimate the effect of weighted (weights are used to obtain more representative samples) self-reported mask adherence as well as attitudes (towards masks on COVID-19 cases and deaths) at the community level, controlling for population density, human development and mobility, as detailed in section 1.3. The survey dataset (de-identified) is available to academic and non-profit researchers<sup>‡</sup>.

---

\*Data and code are available on Github.

<sup>§</sup>Hospitalization admissions proportions due to COVID-19 are only available until September 27, 2020

<sup>‡</sup>See the Facebook Data Use Agreement for more details. Our use of this survey data (not collected by us) was covered under MIT’s IRB protocols E-2578 and E-2859. Respondents were 18 years or older, and consented to their responses being used by researchers.

# Working Paper

## 1 Results

### 1.1 Mask Mandates and COVID-19 Outcomes

We estimate the effect of mask mandates on three prominent COVID-19 outcomes: 1) number of new confirmed cases, 2) proportion of newly-admitted COVID-19 related hospital admissions (i.e. the number of patients admitted to treat COVID-19 symptoms relative to the total number of admitted patients), and 3) number of deaths. We ensure to only use new cases, hospital admissions and deaths each day, as opposed to cumulative numbers. Outcome variable characteristics (Z-normalization, smoothing, date ranges, etc.) are defined in appendix table 1. Our estimation controls for the level of human mobility (using different types of mobility metrics [51]) as a proxy for the introduction of other non-pharmaceutical interventions, the number of COVID-19 tests being administered [30], seasonal effects (proxied by temperature and precipitation data [52]), and idiosyncratic state and time effects. We regress each COVID-19 outcome on day  $t$  in state  $s$  to estimate the treatment effects of mask mandates  $\gamma_\tau$ , where  $\tau$  is the number of weeks before or after the start of a mandate (see Eq. 1 in the Methods section for the full specification).

As show in fig. 1, mask mandates (here defined as the earlier between mandates for all employees or mandates for all members of the public – we later do robustness checks to relax these assumptions) were introduced at day zero, the red vertical line. The y-axis represents the treatment effect associated with mask mandates on the COVID-19 outcome for each day before or after the introduction of a mask mandate relative to the day before the introduction of a mask mandate (as is standard in an event study framework [38] because we normalize  $\gamma_{\tau=-1} = 0$ ). For all three outcomes, although the pre-treatment effect is statistically indistinguishable from zero for the 6 days preceding the introduction of the mandates, it exhibits a slight upward trend, reflecting the fact that mandates were in many cases introduced as a response to cases, hospitalizations and deaths starting to surge.

For daily new cases, we observe a delay of about 11 days after the mandates are introduced for the treatment effect to start increasing (i.e. going negative). The treatment effect continues to increase (i.e. its magnitude becomes more negative) reaching -0.45 standard deviations (95% confidence interval [-0.68,-0.26]) 50 days after the introduction of mask mandates (adjusted  $R^2$  is 0.431 and  $p < 0.001$ ). The magnitude of the associated treatment effect is large, corresponding to 3.24 cases per 100,000 people or 13% of the highest recorded number of new cases per 100,000 people during our observation period.

The delay for mask mandates to have an associated treatment effect on COVID-19 related deaths is 19 days after the start of a mandate. This 8-day time lag between the decrease in the number of cases and the number of deaths is in line with the temporal pathogenesis characteristics of the virus as the interquartile range of the time between symptom onset and death is 8-26 days [53–60]. After 19 days, the treatment effect continues to increase (adjusted  $R^2$  is 0.304 and  $p < 0.001$ ) reaching -0.80 [-1.02,-0.59] standard deviations after 50 days which corresponds to 0.19 deaths per 100K, or about 20% of the highest recorded number of daily COVID-19 related deaths observed during our observational period.

Finally, we also estimate the effect of mask mandates on the only type of hospitalization data available at the state level for all states since the beginning of the pandemic (here, as early as February 1, 2020): the proportion of daily hospitalization admissions<sup>‡</sup> [29] due to COVID-19. It is important to note that we only observed the *proportion* of hospitalizations, which is the the number of new hospitalizations due to COVID-19 relative to the number of total admissions. Unfortunately, this proportion is a noisy proxy for the number of hospitalizations per 100K due to COVID-19 (that we would like to observe) as it is well documented that hospital capacity was deliberately increased to accommodate surges in the number of hospitalizations and that fewer people went to the hospital as regular admissions were discouraged and elective treatments postponed during the pandemic [61–64] which affects the denominator of the hospitalization proportion. However, even though noisy, we investigate the effect of mandates on the proportion of hospitalization as it still provides a useful perspective of the effect of mask mandates on COVID-19 outcomes.

Similarly to cases and deaths, we find that the introduction of mask mandates leads to a statistically significant decrease in the proportion of COVID-19 related hospitalization admissions after 8 days and it continues to decrease thereafter (adjusted  $R^2$  is 0.511 and  $p < 0.001$ ). 50 days later, the proportion of

<sup>‡</sup>Admissions are coded as COVID-19 related if the admission code U071, U072, B9729, or if primary ICD-10 code is R05, R060, R509, Z9911, R0902, R0603, R0609, R062, R069, R0602, R05, R0600, J9691, J9692, J9621, J9690, J9601, J9600, J189, J22, J1289, J129, J1281, B9721, B9732, B342, B349, A419, R531 or R6889 and there is a secondary ICD-10 code of Z20828, or if the primary ICD-10 code is Z20828.

# Working Paper

## Effect of Mask Mandates on COVID-19 Outcomes

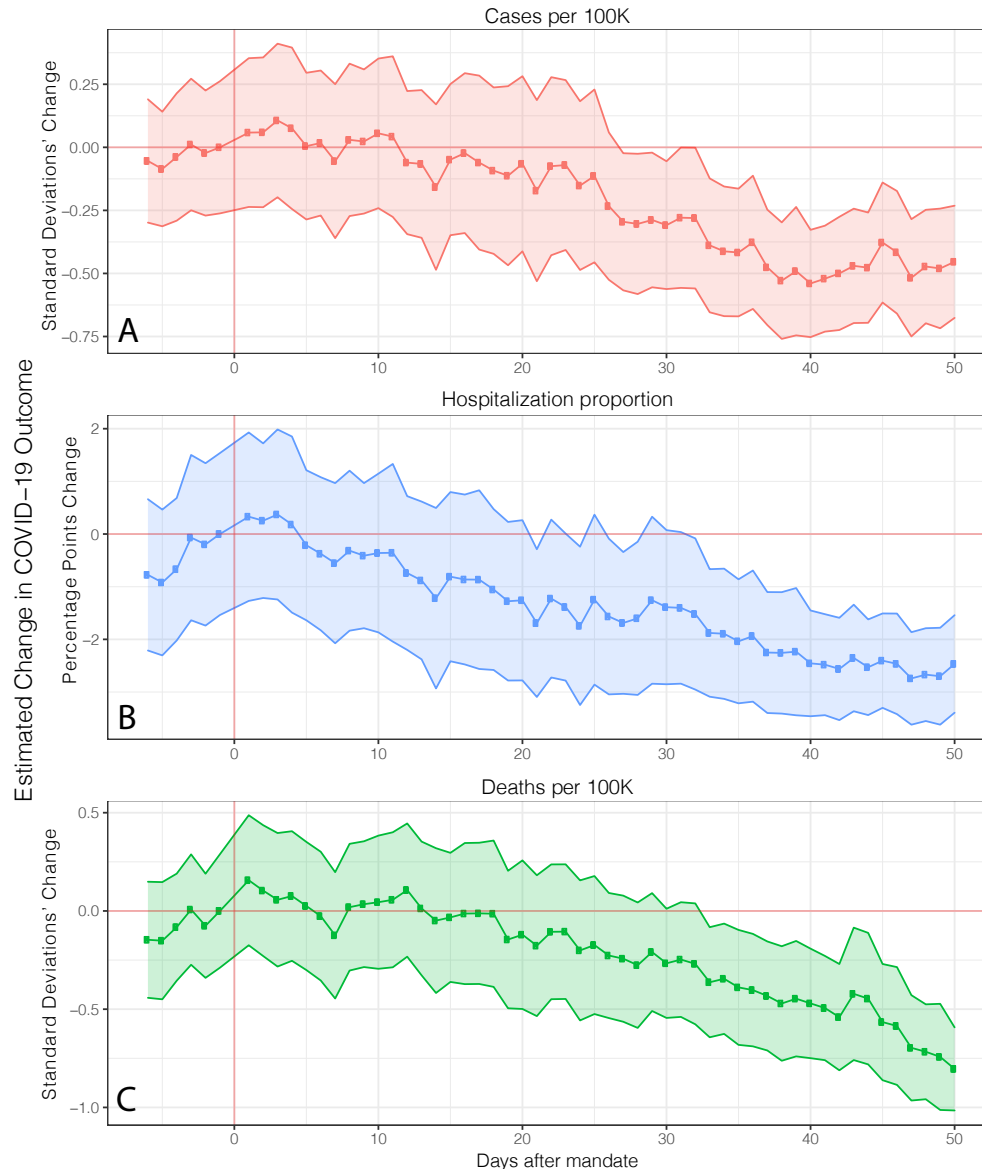


Figure 1: Using an event study design, we estimate the treatment effect of the introduction of mask mandates (shown on the vertical red line) on Z-scored population-normalized COVID-19 daily new confirmed cases, daily new hospitalization admissions proportion, and deaths across all 50 states and D.C. over the time period between February 1 and September 27, 2020. Shaded area represents 95% confidence interval, with standard errors clustered at the state level. **(A)** It takes 11 days for the number of cases to start decreasing. After 50 days, the number of cases decreased by  $-0.45$   $[-0.68, -0.26]$  standard deviation, which corresponds to a decrease of 3.24 cases per 100K or 13% of the highest recorded number of new cases per 100K prior to Sep 27 2020 (adjusted  $R^2$  is 0.431 and  $p < 0.001$ ). **(B)** We also observe a decrease in the proportion of COVID-19 related hospitalization after 8 days, reaching  $-2.47$   $[-3.39, -1.54]$  percentage points after 50 days, compared with a highest recorded of 34% during our observation period (adjusted  $R^2$  is 0.511 and  $p < 0.001$ ). **(C)** It takes 19 days for the number of deaths to start decreasing, reaching  $-0.80$   $[-1.02, -0.59]$  standard deviations 50 days later (adjusted  $R^2$  is 0.304 and  $p < 0.001$ ). This corresponds to a decrease of 0.19 deaths per 100K, or 20% of the highest recorded number of new deaths during our observational period.

# Working Paper

COVID-19 related hospitalization admissions decreased by -2.47 [-3.39,-1.54] percentage points (not standard deviations, since this outcome is an already normalized percentage). For reference, this corresponds to a 7% decrease compared to the highest recorded proportion (34%) of COVID-19 related hospitalization admissions during our observation period.

Overall, these results suggest that the introduction of mask mandates have led to a decrease of 3.38 daily new cases per 100K, 0.19 daily deaths per 100K and -2.47 percentage points of hospitalization proportions nationally (since we include all states and D.C.) 50 days later. Full regression results are available in appendix table 4 in appendix C.

All associated treatment effect estimates include state and time fixed effects, and control for a number of confounding factors: (a) indicators of human mobility [51] (number of visits to recreational areas, grocery stores, pharmacies, parks, transit stations, workplace and residential areas) to control for variations in the spread of the virus due to variations in mobility and as a proxy for other NPIs such as stay-at-homes (as they impact mobility), (b) daily new test rate [30] to control for variations in the number of tests being administered, and (c) temperature and precipitation [52] to control for weather-induced behaviors. We ensure that all our variables have been smoothed and de-trended (for day of the week variations), and we report standard errors clustered at the state-level. We also include squared values of each mobility indicator to proxy for social contacts ([65,66]). See appendix table 2 for descriptive statistics on the control variables being used.

## 1.1.1 Robustness Checks

We conduct a number of checks to test the robustness of our results. First, we experiment with changing how mask mandates are defined. As noted earlier, so far, we have defined the start of a mask mandate as the earlier date between mandates for all employees or mandates for all members of the public (more on the different types of mandates in the State-level Mandate Introduction Dates and Types section). Here, we consider two alternative specifications in which we only consider mask mandates requiring everyone to wear a mask outside, and another specification where we only consider mandates requiring only business employees to wear masks. The former specification is more stringent than our original specification (the earlier of the two types of mandates) as these public mandates generally came later in the year than those focusing on business employees only, and more states still do not have the public mandates. As shown in appendix fig. 5 in appendix C for the public mandates and in appendix fig. 4 for the business employee mandates, the trajectory and magnitude of the treatment effect associated with mask mandates is consistent with our earlier estimates (shown in fig. 1). Specifically we observe that the business employee mandates specification treatment effect is very similar to our earlier specification results which is because almost all states had business employee mandates before public mandates, and our previous specification took the earlier start date between business employee mandates and public mandates. We also observe that the treatment effect associated with mandates that require all members of the public to wear masks takes longer to have an effect, but eventually reaches the same magnitude of effect size. We hypothesize that this delay is due to the fact that public mask adherence takes some time to increase following the introduction of a mask mandate, which we investigate in the next section. Overall, because the trajectory and magnitude of the treatment effect is consistent across all three specifications, this suggests that our treatment effects are not overly sensitive to our definition of mask mandates.

As a second robustness check, we recompute our treatment effect estimates on the number of deaths and the proportion of hospitalizations but this time controlling for the number of cases. As shown in appendix fig. 6 in appendix C, controlling for the number of cases does not significantly change the trajectory of the effect of mask mandates on deaths and hospitalization. As expected because cases on the causal pathway to deaths and hospitalizations, the more severe outcomes, the treatment effect size is decreased. Because our effect size is still strong and the trajectory still consistent even after controlling for cases, this provides additional evidence of the positive effect associated with mask mandates on COVID-19 outcomes.

So far, we have always looked at all 50 states and the District of Columbia together. Even though we control for state-specific trends, here we investigate the heterogeneity of treatment effect between earlier and later-wave states as it is possible that the effect of mask mandates on states that were part of the COVID-19 pandemic's early wave might be different from states that were affected later. For example, mask shortages were present during the early stages of the pandemic [67–69] which might affect the proportion of people who



# Working Paper

wear masks (mask adherence) following a mask mandate for early states compared to later states. Therefore, as a robustness check, we recompute our treatment effect estimates but this time looking separately at the first 15 states to have the highest number of cases per 100K during the month of April (namely, NY, NJ, MA, CT, MI, DC, RI, IL, WA, PA, GA, VT, MD, FL, LA) compared to the rest of the states (i.e. later wave states). As shown in appendix fig. 8 in appendix C, masks mandates took more time to have an effect on earlier states (around 20 days) whereas they had a faster effect on later states but the trajectory and magnitude of the treatment effect overall is consistent with our previous main result, suggesting that our specification is not sensitive to subsets of earlier wave, later wave or all states.

Recent work has shown that declines COVID-19 outcomes are not only due to the introduction of policies such as mask mandates but are also a result of private behavioral responses to observations of increased outcome numbers [70]. To investigate if our treatment effect is confounded by behavioral responses, we control for past outcome values and growth rates (conditioning on the delayed outcome and growth rate will result in the confounding path to be blocked - see [70] for more details about the causal graphical model). As shown in supplementary figure 7, including a 14-day delayed outcome and growth rate as control does not significantly change the magnitude and trajectory of our associated treatment effect, suggesting that confounding due to behavioral responses does not play a strong role.

As a last robustness check, we investigate if we are seeing decreases in COVID-19 outcomes because the number of new COVID-19 tests done might be decreasing leading us to observe, erroneously, a lower rate of COVID-19 outcomes. Although we already control for the testing rate in our event study specification, here, we also investigate if testing rates were themselves decreasing during the period of observation, in a way that is associated with the introduction of mask mandates. We do so in two ways: first, we look at the per-state and mean (over all states) testing rate (daily new tests per 100K) every week, and as shown in appendix fig. 9 in appendix D, it does not decrease but instead increases over our period of investigation. As a further test, we conduct an event study estimation to investigate a confounding treatment effect associated with mask mandates on testing rate. As shown in fig. 10, there is no associated treatment effect of mask mandate on testing rate. Therefore, it is unlikely that our estimates of decreasing COVID-19 outcomes after the introduction of a mask mandate are due to decreased detection of COVID-19 outcomes.

Overall, our analysis shows that the introduction of mask mandates at the state-level is associated with a statistically significant and large decrease of cases, hospitalizations, and deaths.

## 1.2 Mask Mandate and Mask Adherence

Here, we investigate whether the introduction of mask mandates is associated with a significant increase in mask adherence i.e., do mask mandates lead to more people wearing masks? Although there are significant on-going efforts to estimate mask adherence at a population level such as by leveraging computer vision on social media data [34–37], data that tracks mask usage at a county or state level over time has is only now starting to be available: as of September 8, 2020, the Delphi project [29] has started publicly releasing mask adherence data that measures the estimated percentage of people who wore a mask most or all of the time while in public in the past 5 days by asking the question “In the past 5 days, how often did you wear a mask when in public?” in an on-going Facebook online survey ran on millions of people in the US. We therefore use their weighted state-level estimates of mask adherence as our dependent variable. Their weighting strategy to obtain representative samples is described briefly in the State-level COVID-19 Outcome and Mask Adherence Data section, and comprehensively described in their technical report [33].

During the period between September 8 (when adherence data started being available) and November 30, 2020 (present), only 4 states have enacted new state level requirements: Hawaii and Iowa on November 16, North Dakota on November 14 and New Hampshire on November 20. Although some of these states had county-level mask mandates, had memos encouraging mandates at county or state-level, or had mask requirements in certain businesses, they did not have a state-wide requirement with implementation until the dates we outline. We run a similar treatment effect estimation as earlier but this time using mask adherence as the outcome variable and for at most 13 days after mandate introduction because this is the longest time horizon we have simultaneously for *all* four states.

As shown in fig. 2, there is a flat pre-treatment trend up to 8 days before the introduction of a mask mandate followed by an uptick in mask adherence after the introduction of mask mandates with a maximum increase in adherence of 23.4 [12.0,34.8] percentage points (adjusted  $R^2$  is 0.925 and  $p < 0.001$ ) 13 days

# Working Paper

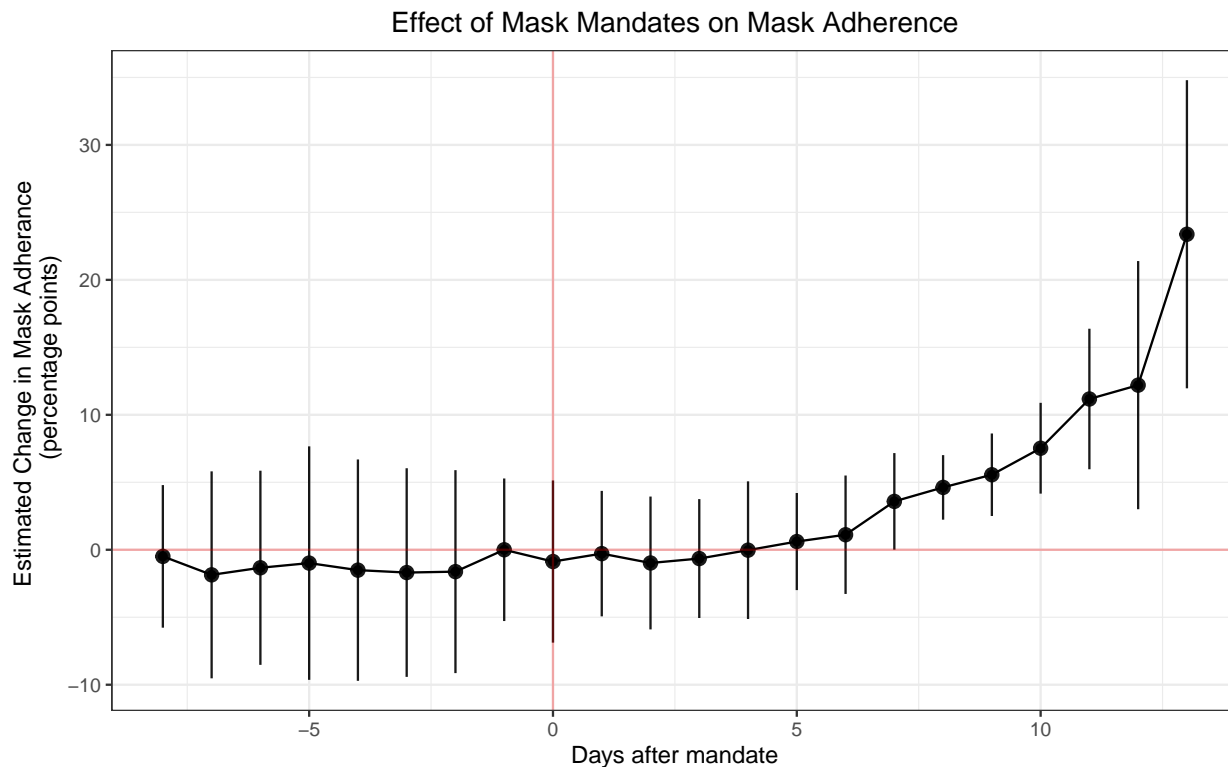


Figure 2: Event study estimates of the treatment effect of mask mandates on mask adherence in the only four states (Hawaii, Iowa, North Dakota and New Hampshire) which had late mask mandates (Nov 14, 16, and 20) during the period we have daily state-level mask adherence data. We find that there is a flat pre-treatment trend up to 13 days before the introduction of a mask mandate followed by a 23.4 [12.0,34.8] percentage points increase in mask adherence following introduction (adjusted  $R^2$  is 0.925 and  $p < 0.001$ ). This result suggests the strong effect of mask mandates on mask adherence. We expect our results to be a fair estimate of treatment effect in the US due to the fact that these four states are very geographically, culturally and politically diverse.

after mask mandate introduction. It is important to note that we observe a delay of about 6 days before we observe a statistically significant increase in mask adherence. We hypothesize that if we had adherence data for earlier states, we would observe an even larger delay because of the mask shortages that were present during the early stages of the pandemic [67–69].

Again, we include state and time fixed effects, and control for a number of factors: testing rate due to its potential effect on mask usage as more people might wear masks if they are more regularly tested, and mobility as we want to control for the fact that perhaps the more people leave their house, the more they might wear masks. Additionally, we control for the number of deaths and confirmed cases because we want to control for the fact that the more cases and deaths people know about, the more they might be likely to wear masks (although in practice, omitting these two controls leads to very little difference).

As a robustness test, we investigate if our estimation changes significantly if we remove testing rate, cases and deaths as controls. As seen in appendix fig. 11 in appendix E, our estimation is robust to these controls: the treatment effect is noisier but consistent with our current result (when controlling for cases, deaths and testing rate). Full regression results are shown in table 12.

As an additional result, because we have a limited window of time where we have both COVID-19 outcomes (only cases and deaths, no hospitalization data as access ended in September) and mask adherence data, we can use it to investigate if mask adherence is more directly associated with a positive effect on COVID-19 outcomes. To do so, we implement a multi-linear regression of COVID-19 outcomes on compliance, controlled, as before, by a number of factors as specified in equation 3.2.2. Note that we use *all* states

# Working Paper

(including D.C.) here, not just the four states that had mandates after Sep. 8th. As shown in appendix table 13 in appendix F, an increase of 1% in mask adherence leads to a decrease of -1.63 [-1.76, -1.50] new confirmed cases per 100K (adjusted  $R^2$  is 0.502 and  $p < 0.001$ ), and -0.016 [-0.015, -0.018] new deaths per 100K (adjusted  $R^2$  is 0.343 and  $p < 0.001$ ), controlling for test rates, weather and mobility. For reference, the rate of COVID-19 outcomes was 25.4 new daily cases per 100K and 0.95 daily new deaths per 100K, suggesting that even a 1% increase in masking adherence can have a significant positive effect.

Although we only estimate the effect of mandates on adherence in these 4 states due to the fact that they are the only ones that implemented mask mandates late enough that we have adherence data for them, we expect this result to support our main result that mask mandates are associated with a significant decrease in COVID-19 outcomes, especially due to the fact that these four states (Hawaii, Iowa, North Dakota and New Hampshire) are very geographically, culturally and politically diverse.

## 1.3 International Mask Adherence and Attitudes

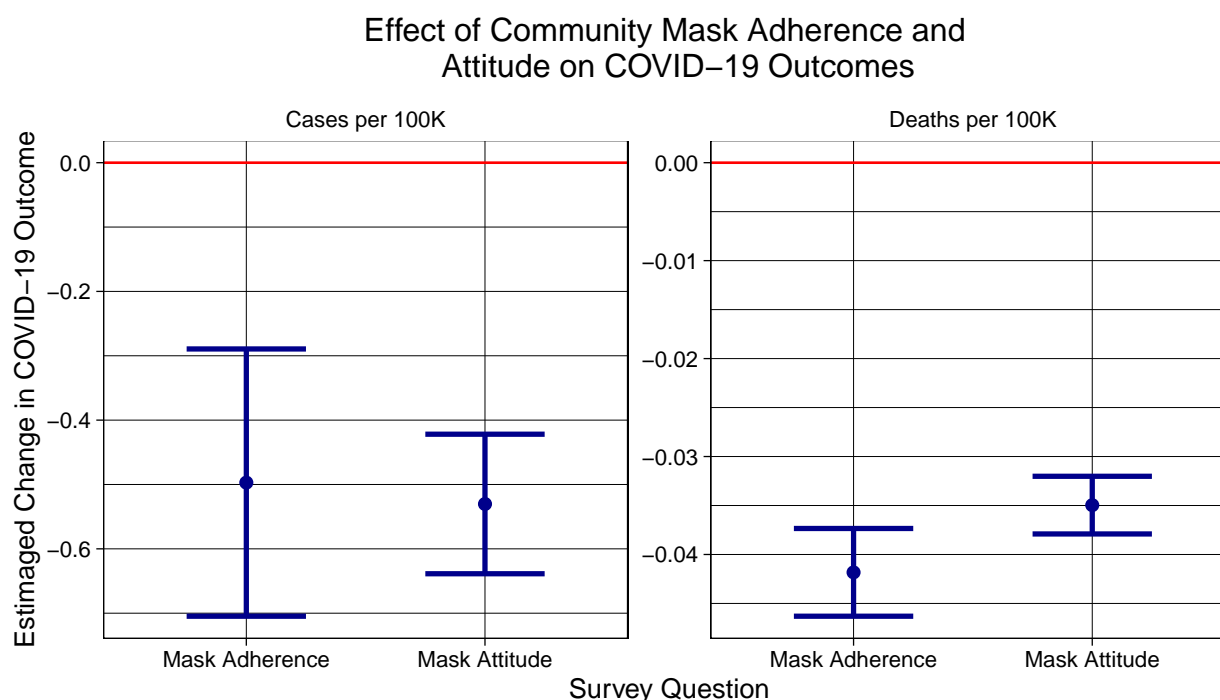


Figure 3: Using a novel survey-based dataset of more than half a million online Facebook survey respondents in 51 languages from 68 countries, we estimate that a 1% increase in mask adherence is associated with a decrease of -0.45 [-0.70,-0.29] cases per 100K and a decrease of -0.042 [-0.046,-0.037] deaths per 100K. Similarly, we find that a 1% increase in attitude about the importance of wearing masks leads to a decrease of -0.53 [-0.64,-0.42] cases per 100K and a decrease of -0.035 [-0.038,-0.032] deaths per 100K. For reference, the current COVID-19 outcomes in the world as of December 14, 2020 is 10 daily new cases per 100K and 0.17 daily deaths per 100K, which suggest that mask adherence and attitudes are associated with a strong positive impact on COVID-19 outcomes worldwide. Samples are expected to be representative because we use a unique weight for each sample which corrects for a variety of biases.

Here, as a supporting result of the effect of mask mandates on COVID-19 outcomes, we expand the scope of our analysis and look at the effect of mask adherence internationally. Additionally, we also look at attitudes towards mask wearing. We do so by using the novel survey-based ‘COVID-19 Beliefs, Behaviors & Norms Survey’ dataset which asks more than 150 questions (see [32] for the complete survey instrument) about COVID-19 to more than half a million online Facebook survey respondents in 51 languages from 68 countries. The survey has currently been deployed in 8 waves starting on July 7, 2020 and is still on-going.



# Working Paper

Because the 68 countries (full list in the Data section) we include in our analysis are from very different parts of the world and were in various stages of the pandemic (first wave, second waves, before mandates, after mandates, etc.) during the 4 months of our observation period, we expect that our estimates are fairly representative.

We focus on the two questions most relevant to the effect of masks on COVID-19 outcomes: a question about mask adherence: “Out of 100 people in your community, how many do you think wear a face mask or covering when they go out in public?”; and a question about mask norms: “Out of 100 people in your community, how many do you think believe the following because of COVID-19: People should wear a face mask or covering when out in public?”. The first question is a self-reported sample estimate of the percentage of a respondent’s community that wears masks in public, and the second question provides a sample estimate of the percentage of the community that *believes* masks to be important to wear in public.

We use a weighted survey regression approach to regress each country’s new daily deaths per 100K and cases per 100K (both smoothed) against the self-reported mask adherence and mask attitude weighted response sample with countries as survey strata and individual anonymized survey responses as survey clusters. Samples are expected to be representative because we use a unique weight for each sample which correct for a variety of biases including demographics (age bracket and sex) of the respondents compared to the census data in each country and compared to Facebook’s online population (through post-stratification), and for response and non-response drivers (the estimated design effects was below four as detailed in [32]). The dataset’s weighting strategy to obtain representative samples is described more in the International Mask Norm and Adherence Data section, and comprehensively described in their technical report [32]. We also control for mobility, new test rate, population density and the country’s human development index. The regression specification is described in equation 3.2.3.

As shown in fig. 3, the associated effect coefficients suggest that a 1% increase in mask adherence is associated with a decrease of -0.45 [-0.70,-0.29] cases per 100K and a decrease of -0.042 [-0.046,-0.037] deaths per 100K. Similarly, we find that a 1% increase in attitude about the importance of wearing masks leads to a decrease of -0.53 [-0.64,-0.42] cases per 100K and a decrease of -0.035 [-0.038,-0.032] deaths per 100K. For reference, the current statistics in the world as of December 14, 2020 is 10 daily new cases per 100K and 0.17 daily deaths per 100K, which suggest that even a 1% increase in mask adherence and attitudes is associated with a strong positive impact on COVID-19 outcomes worldwide. Full regression results are shown in appendix fig. 14 in appendix G.

As a robustness check, we perform the same weighted survey regression but this time dis-aggregating by survey waves. As shown in appendix fig. 12 and 13 in appendix G, the regression coefficients of mask adherence and attitudes on deaths and cases are overwhelmingly negative, which supports our results that mask adherence and attitudes have a positive impact on COVID-19 cases and deaths across waves. Full regression results tables are shown in appendix G.

## 2 Discussion

Our main result is that mask mandates are associated with a significant improvement in COVID-19 outcomes (corresponding to 13% of the highest recorded number of daily new cases, 20% of deaths, and 7% of hospital admissions). In support of our main result, we also observe that mask mandates are associated with a 23.4 percentage point increase in mask adherence in four geographically, culturally and politically diverse states, and that mask adherence is itself associated with a significant decrease in COVID-19 cases and deaths. Finally, we observe that community mask adherence and attitudes towards masks are associated with fewer cases and deaths in 68 countries. Taken together, these results strongly suggest the positive effect of mask mandates, mask adherence and mask attitudes on COVID-19 cases, hospitalizations and deaths.

As a limitation, we acknowledge that these treatment effects are potentially overestimates of the effect of mandates and that our estimation is not causal – both limitations are shared by recent work investigating the role of mandates on COVID-19 outcomes [7–12]. For instance, although we use mobility data as a proxy to control for other NPI policies such as stay-at-home orders (since such policies strongly affect mobility), we expect that without a proper study design that aims to estimate the marginal effect of different NPI policies simultaneously, our estimands are potentially overestimated. Another potential source of over-estimation is that although we observe flat pre-treatment anticipatory policy effects before the mask mandates were put

# Working Paper

in place and that we control for past outcomes and growth rates to minimize confounding due to behavioral responses [70], some bias from behavioral changes might still persist. On the other hand, it is possible that our treatment effects are underestimates due to the peer effects caused by neighboring states' mask mandates affecting other states [49]. We leave to future work the design and estimation of such causal, marginal, and peer-effect estimations, and expect that our findings will still provide new insights into the long-term effect of mask mandates, mask adherence and mask attitudes on COVID-19 cases, hospitalizations and deaths.

Another limitation is that although our survey-based sample estimates of mask adherence and mask attitudes include weights aimed to correct for a number of biases (including demographics of the respondents compared to the census data in each country and compared to Facebook's online population through post-stratification, and response and non-response drivers [32, 33]) in order to obtain more representative samples, it is possible that there is still some bias in our sample estimates. Ongoing efforts using computer vision to estimate mask adherence from social media images and videos [34–37] should soon provide new data on mask adherence, perhaps going back to beginning of the pandemic. Additionally, we do not account for public health messaging [71] or the effect of daily updates on cases, deaths and hospitalizations from the news [72]. We leave to future work the incorporation and modeling of such factors on COVID-19 outcomes.

Our results have potential policy implications by reinforcing the need for maintaining and encouraging mask-wearing by the public. These results are especially significant in light of some states starting to remove their mask mandates and attempts by state governments to prevent local governments from implementing mask orders [26, 28]. Removal of mask-mandates or a decrease in mask adherence could result in significant increases in COVID-19 cases, hospitalizations and deaths. Maintaining mask mandates is especially important given our observation of their positive health impact, while previous research has shown their minimal economic impact (especially compared with other measures such as stay-at-home orders or business closures) [73].

From a behavioral perspective, more research is needed to investigate the optimal incentives, community health communication, and regulations to increase mask-adherence [74–78], especially in a climate where conspiracy theories are emerging to discourage mask-adherence [79]. More research is also needed to probe potential improvements in public health communication strategies to encourage mask-adherence, including harm-reduction frameworks [80] and policies tailored to help disadvantaged communities' lived experiences [81]. For example, lockdowns and business closures have not significantly decreased the infection rates of people from poorer communities as they cannot stop going to work [65] while unfortunately having a disproportionate impact on their financial health [73]. This is especially important as similar demographic drivers behind mask avoidance [17–19, 82] might impact successful deployment of vaccines.

## 3 Methods

### 3.1 Data

As detailed in the 3.1 section in the appendix, we obtain data from a large variety of data sources. For the main event study investigating the effect of mask mandates on COVID-19 outcomes, we start with de-trended (for day of the week variations), smoothed and normalized daily state-level values for all variables (cases, hospitalizations, deaths, mobility, test rate, weather). We carefully select an observational time period where we have data for all variables, Feb 1st to September 27th (which is when access to hospital data ended). For the event study of the effect of mask mandates on adherence, and for the multi-linear regression of adherence on COVID-19 outcomes, we do the same but at a daily level. For the survey regression of mask adherence and attitudes on COVID-19 outcomes, we do a similar data fusion exercise as before, but this time merging daily at the international level.

### 3.2 Analysis

#### 3.2.1 Event study of mask mandates on COVID-19 Outcomes

We obtain COVID-19, mobility, new test rate and weather data at the daily level as outlined in the Data section. We then calculate the number of weeks between each day of data (in the time interval from Feb 2,

# Working Paper

2020 to September 27, 2020) and the start of mask mandate implementation for each state. We do not use data past the end date of when a state has lifted mask mandate.

Our specification is:

$$C_{o,t,s} \sim \sum_{\gamma=-6}^{50} \gamma_{\tau} \times \mathbf{1}(r_{s,t} = \tau) + \alpha_s + \alpha_t + \alpha'_s t + X_{t,s} + \epsilon_{t,s} \quad (1)$$

where the outcome is  $C_{o,t,s}$  ( $o \in \{\text{new deaths due to COVID-19, new confirmed cases of COVID-19, hospitalization proportion due to COVID-19}\}$ ) for each day  $t$  in state  $s$ . The goal is to estimate treatment effects  $\gamma_{\tau}$  where  $\tau$  is the number of days before or after the start of a mask mandate.  $\mathbf{1}$  is the delta function such that  $\gamma_{\tau}$  is non-zero only when the number of weeks  $r_{s,t}$  relative to the start of mask implementation is  $\tau$ ,  $\alpha_s$  and  $\alpha_t$  are state and time fixed effects,  $\alpha'_s t$  is a state-specific trend coefficient multiplying the time trend variable to allow for the fact that different states had different outcome trajectories (see [46] for more details),  $X_{t,s}$  are our controls, and  $\epsilon_{t,s}$  represent the model residuals.

Because some states such as New York had a much higher COVID-19 incidence than other states, we used population-scaled (per hundred thousand people) outcomes, and we further Z-scored the daily value of each outcome variable using state-specific means and standard deviations. Due to these transformations, our treatment effect estimates are expressed in units of standard deviations.

While political affiliation has been shown to correlate the propensity to wear a mask [83], this effect should be captured in the state fixed effect since we do not expect political affiliation to change significantly during our observational period.

We normalize  $\gamma_{\tau=-1} = 0$  and cluster standard errors at the state level. We use the R package's `lfe`'s regression function `felm` to run this specification as it uses the method of alternating projections to speed up regression on our large datasets [84].

As a robustness check, we repeat employ a similar event study specification to verify that the decrease in COVID-19 outcomes we observe is not due to a decrease in test rate (per 100K of population). We use the following specification:

$$TR_{t,s} \sim \sum_{\gamma=-5}^{20} \gamma_{\tau} \times \mathbf{1}(r_{s,t} = \tau) + \alpha_s + \alpha_t + \alpha'_s t + X'_{t,s} + \epsilon_{t,s} \quad (2)$$

where  $TR_{t,s}$  is the daily new test rate, and all other variables are similar to above, with  $X'_{t,s}$  being our controls without test rate (since it is now the dependent variable).

### 3.2.2 Mask Mandate and Mask Adherence

Using daily mask adherence data from September 8 to November 30, 2020, we estimate a similar event study specification to the above using mask adherence  $A_{s,t}$  as the dependent variable. Additionally, we control for deaths and confirmed cases because we want to control for the fact that the more case and deaths people see, the more they might be likely to wear masks (although in practice, omitting these two controls leads to practically no difference), and we do not add state and time fixed effect due to the very small number of states considered and the very short time interval without noticeable difference). As before, we also control for restaurant and recreation, grocery and pharmacy, parks, transit stations, workplace and residential percentage change from baseline (using the median day-of-the-week value from the first 5 weeks of January and February) mobility data.

We implement a multi-linear regression of COVID-19 outcomes on compliance, controlled by a number of factors, as specified below:

$$C_{o,t,s} \sim A_{s,t} + X''_{t,s} + \epsilon_{t,s} \quad (3)$$

where  $C_{o,t,s}$  are the daily  $t$  COVID-19 outcomes  $o \in \{\text{deaths, cases}\}$  and  $X''_{t,s}$  are the mobility, new test rate and weather controls.

# Working Paper

### 3.2.3 International Mask Adherence and Norms

Here, we use multi-linear regression to estimate the effect of mask norms or mask adherence on COVID-19 case and death outcomes for each wave  $w$ :

$$C_{o,t,k} \sim Q_{t,k} + X_{t,s}''' + \epsilon_{t,s} \quad (4)$$

where  $C_{o,t,k}$  are the daily  $t$  COVID-19 outcomes  $o \in \{\text{deaths, cases}\}$  for each country  $k$ , for question  $q$ , controlling for mobility and new test rate  $X_{t,s}'''$ . One separate model estimation is run for each wave  $w$ , each outcome  $o$  and each question  $q \in \{\text{mask norms, mask adherence}\}$ .

More details about survey weights and the dataset can be found in the 3.1 section. We also verify that the weighted average mask adherence, weighted average mask attitude and total number of responses did not change significantly over time during the survey as shown in appendix figures 15, 16 and 14 in appendix G.

We use a complex survey regression (using R's `survey` package) with countries as survey strata and individual anonymized survey responses as clusters. We only select responses that finished the whole survey (including several attention check questions), and we remove responses with missing values for the questions under consideration, and also those with missing weights (<1% of responses).

The 68 countries in our dataset are: United Kingdom, Poland, Italy, Germany, Japan, Argentina, France, Turkey, Mexico, Colombia, United States, Pakistan, Romania, Indonesia, Philippines, Egypt, Malaysia, Bangladesh, Nigeria, Brazil, Thailand, Vietnam, India, Netherlands, Azerbaijan, Australia, South Africa, Canada, Estonia, Senegal, Afghanistan, Tanzania, Angola, Ecuador, Georgia, Mongolia, Peru, Algeria, Mozambique, Bolivia, Portugal, Iraq, Cameroon, Morocco, South Korea, Uruguay, Honduras, Nepal, Sri Lanka, United Arab Emirates, Spain, Cote d'Ivoire, Myanmar, Chile, Venezuela, Guatemala, Trinidad & Tobago, Sudan, Kenya, Jamaica, Ghana, Uganda, Ukraine, Taiwan, Singapore, Cambodia, and Kazakhstan.

## References

- [1] Ensheng Dong, Hongru Du, and Lauren Gardner. An interactive web-based dashboard to track covid-19 in real time. *The Lancet infectious diseases*, 20(5):533–534, 2020.
- [2] Jeremy Howard, Austin Huang, Zhiyuan Li, Zeynep Tufekci, Vladimir Zdimal, Helene-Mari van der Westhuizen, Arne von Delft, Amy Price, Lex Fridman, Lei-Han Tang, et al. Face masks against covid-19: an evidence review. 2020.
- [3] Mingming Liang, Liang Gao, Ce Cheng, Qin Zhou, John Patrick Uy, Kurt Heiner, and Chenyu Sun. Efficacy of face mask in preventing respiratory virus transmission: a systematic review and meta-analysis. *Travel Medicine and Infectious Disease*, page 101751, 2020.
- [4] Derek K Chu, Elie A Akl, Stephanie Duda, Karla Solo, Sally Yaacoub, Holger J Schünemann, Amena El-harakeh, Antonio Bognanni, Tamara Lotfi, Mark Loeb, et al. Physical distancing, face masks, and eye protection to prevent person-to-person transmission of sars-cov-2 and covid-19: a systematic review and meta-analysis. *The Lancet*, 2020.
- [5] Centers for Disease Control and Prevention. Scientific brief: Community use of cloth masks to control the spread of sars-cov-2. *Science Briefs*.
- [6] Christopher T Leffler, Edsel B Ing, Joseph D Lykins, Matthew C Hogan, Craig A McKeown, and Andrzej Grzybowski. Association of country-wide coronavirus mortality with demographics, testing, lockdowns, and public wearing of masks. update june 2, 2020. *medRxiv*, 2020.
- [7] Xiaowen Wang, Enrico G Ferro, Guohai Zhou, Dean Hashimoto, and Deepak L Bhatt. Association between universal masking in a health care system and sars-cov-2 positivity among health care workers. *JAMA*, 324(7):703–704, 2020.

# Working Paper

- [8] Wei Lyu and George L Wehby. Community use of face masks and covid-19: Evidence from a natural experiment of state mandates in the us: Study examines impact on covid-19 growth rates associated with state government mandates requiring face mask use in public. *Health affairs*, 39(8):1419–1425, 2020.
- [9] Miriam E Van Dyke. Trends in county-level covid-19 incidence in counties with and without a mask mandate— Kansas, june 1–august 23, 2020. *MMWR. Morbidity and Mortality Weekly Report*, 69, 2020.
- [10] Timo Mitze, Reinhold Kosfeld, Johannes Rode, and Klaus Wälde. Face masks considerably reduce covid-19 cases in Germany. 2020.
- [11] Steffen E Eikenberry, Marina Mancuso, Enahoro Iboi, Tin Phan, Keenan Eikenberry, Yang Kuang, Eric Kostelich, and Abba B Gumel. To mask or not to mask: Modeling the potential for face mask use by the general public to curtail the covid-19 pandemic. *Infectious Disease Modelling*, 2020.
- [12] Tom Li, Yan Liu, Man Li, Xiaoning Qian, and Susie Y Dai. Mask or no mask for covid-19: A public health and market study. *PloS one*, 15(8):e0237691, 2020.
- [13] David N Fisman, Amy L Greer, and Ashleigh R Tuite. Bidirectional impact of imperfect mask use on reproduction number of covid-19: A next generation matrix approach. *Infectious Disease Modelling*, 5:405–408, 2020.
- [14] Rajat Mittal, Rui Ni, and Jung-Hee Seo. The flow physics of covid-19. *Journal of fluid Mechanics*, 894, 2020.
- [15] Siddhartha Verma, Manhar Dhanak, and John Frankenfield. Visualizing droplet dispersal for face shields and masks with exhalation valves. *Physics of Fluids*, 32(9):091701, 2020.
- [16] Caitlin M Dugdale and Rochelle P Walensky. Filtration efficiency, effectiveness, and availability of n95 face masks for covid-19 prevention. *JAMA Internal Medicine*, 2020.
- [17] Matt C Howard. Gender, face mask perceptions, and face mask wearing: Are men being dangerous during the covid-19 pandemic? *Personality and individual differences*, 170:110417, 2020.
- [18] Tavishi Bhasin, Charity Butcher, Elizabeth Gordon, Maia Hallward, and Rebecca LeFebvre. Does karen wear a mask? the gendering of covid-19 masking rhetoric. *International Journal of Sociology and Social Policy*, 2020.
- [19] Michael H Haischer, Rachel Beilfuss, Meggie Rose Hart, Lauren Opielinski, David Wrucke, Gretchen Zirgaitis, Toni D Urich, and Sandra K Hunter. Who is wearing a mask? gender-, age-, and location-related differences during the covid-19 pandemic. *Plos one*, 15(10):e0240785, 2020.
- [20] Anthony S Fauci, H Clifford Lane, and Robert R Redfield. Covid-19—navigating the uncharted, 2020.
- [21] Thirumalaisamy P Velavan and Christian G Meyer. The covid-19 epidemic. *Tropical medicine & international health*, 25(3):278, 2020.
- [22] Seth Flaxman, Swapnil Mishra, Axel Gandy, H Juliette T Unwin, Thomas A Mellan, Helen Coupland, Charles Whittaker, Harrison Zhu, Tresnia Berah, Jeffrey W Eaton, et al. Estimating the effects of non-pharmaceutical interventions on covid-19 in europe. *Nature*, 584(7820):257–261, 2020.
- [23] Neil Ferguson, Daniel Laydon, Gemma Nedjati-Gilani, Natsuko Imai, Kylie Ainslie, Marc Baguelin, Sangeeta Bhatia, Adhiratha Boonyasiri, Zulma Cucunubá, Gina Cuomo-Dannenburg, et al. Report 9: Impact of non-pharmaceutical interventions (npis) to reduce covid19 mortality and healthcare demand. *Imperial College London*, 10:77482, 2020.
- [24] Shengjie Lai, Nick W Ruktanonchai, Liangcai Zhou, Olivia Prosper, Wei Luo, Jessica R Floyd, Amy Wesolowski, Mauricio Santillana, Chi Zhang, Xiangjun Du, et al. Effect of non-pharmaceutical interventions for containing the covid-19 outbreak in china. *medRxiv*, 2020.



# Working Paper

- [25] Xiaohui Chen and Ziyi Qiu. Scenario analysis of non-pharmaceutical interventions on global covid-19 transmissions. *arXiv preprint arXiv:2004.04529*, 2020.
- [26] Julia Raifman, Kristen Nocka, David Jones, Jacob Bor, Sarah Lipson, Jonathan Jay, Philip Chan, Sandro Galea, et al. Covid-19 us state policy database. 2020. Available at: [www.tinyurl.com/statepolicies](http://www.tinyurl.com/statepolicies).
- [27] Christopher Adolph, Kenya Amano, Bree Bang-Jensen, Nancy Fullman, and John Wilkerson. Pandemic politics: Timing state-level social distancing responses to covid-19. *medRxiv*, 2020.
- [28] Austin L Wright, Geet Chawla, Luke Chen, and Anthony Farmer. Tracking mask mandates during the covid-19 pandemic. *University of Chicago, Becker Friedman Institute for Economics Working Paper*, (2020-104), 2020.
- [29] David C. Farrow, Logan C. Brooks, Aaron Rumack, Ryan J. Tibshirani, and Roni Rosenfeld. Delphi epidata api. 2015. Available at: <https://github.com/cmu-delphi/delphi-epidata>.
- [30] Covid tracking project at the atlantic. Retrieved on Dec 4 2020 from <https://covidtracking.com/>.
- [31] Esteban Ortiz-Ospina Max Roser, Hannah Ritchie and Joe Hasell. Coronavirus pandemic (covid-19). *Our World in Data*, 2020. <https://ourworldindata.org/coronavirus>.
- [32] Avinash Collis, Kiran Garimella, Alex Moehring, M. Amin Rahimian, Stella Babalola, Dominick Shattuck, Dean Eckles, and Sinan Aral. Global survey on covid-19 beliefs, behaviors, and norms. *MIT Sloan School of Management Technical Report*, 2020.
- [33] Neta Barkay, Curtiss Cobb, Roe Eilat, Tal Galili, Daniel Haimovich, Sarah LaRocca, Katherine Morris, and Tal Sarig. Weights and methodology brief for the covid-19 symptom survey by university of maryland and carnegie mellon university, in partnership with facebook. *arXiv preprint arXiv:2009.14675*, 2020.
- [34] Patrick J Grother, Mei L Ngan, and Kayee K Hanaoka. Ongoing face recognition vendor test (frvt) part 2: Identification. 2018.
- [35] Junyang Chen, James F Cremer, Kasra Zarei, Alberto M Segre, and Philip M Polgreen. Using computer vision and depth sensing to measure healthcare worker-patient contacts and personal protective equipment adherence within hospital rooms. In *Open forum infectious diseases*, volume 3. Oxford University Press, 2016.
- [36] Gabriel TS Draughon, Peng Sun, and Jerome P Lynch. Implementation of a computer vision framework for tracking and visualizing face mask usage in urban environments. In *2020 IEEE International Smart Cities Conference (ISC2)*, pages 1–8. IEEE.
- [37] Katherine L Gibson and Jonathan M Smith. The emperor’s new masks: On demographic differences and disguises. In *Proceedings of the IEEE Conference on Computer Vision and Pattern Recognition Workshops*, pages 57–64, 2015.
- [38] Edward Kong and Daniel Prinz. Disentangling policy effects using proxy data: Which shutdown policies affected unemployment during the covid-19 pandemic? *Journal of Public Economics*, 189:104257, 2020.
- [39] Sumedha Gupta, Thuy D Nguyen, Felipe Lozano Rojas, Shyam Raman, Byungkyu Lee, Ana Bento, Kosali I Simon, and Coady Wing. Tracking public and private response to the covid-19 epidemic: Evidence from state and local government actions. Technical report, National Bureau of Economic Research, 2020.
- [40] Sakkakom Maneenop and Suntichai Kotcharin. The impacts of covid-19 on the global airline industry: An event study approach. *Journal of air transport management*, 89:101920, 2020.
- [41] HaiYue Liu, Aqsa Manzoor, CangYu Wang, Lei Zhang, and Zaira Manzoor. The covid-19 outbreak and affected countries stock markets response. *International Journal of Environmental Research and Public Health*, 17(8):2800, 2020.

# Working Paper

- [42] Mohammad Noor ALAM, Md Shabbir ALAM, and Kavita CHAVALI. Stock market response during covid-19 lockdown period in india: An event study. *The Journal of Asian Finance, Economics, and Business*, 7(7):131–137, 2020.
- [43] Pinglin He, Yulong Sun, Ying Zhang, and Tao Li. Covid-19’s impact on stock prices across different sectors—an event study based on the chinese stock market. *Emerging Markets Finance and Trade*, 56(10):2198–2212, 2020.
- [44] İlkuut Elif KANDİL GÖKER, Binali Selman EREN, and Süleyman Serdar KARACA. The impact of the covid-19 (coronavirus) on the borsa istanbul sector index returns: An event study. *Gaziantep Üniversitesi Sosyal Bilimler Dergisi*, 19(COVID-19 Special Issue):14–41, 2020.
- [45] Wei Lyu and George L Wehby. Shelter-in-place orders reduced covid-19 mortality and reduced the rate of growth in hospitalizations: study examine effects of shelter-in-places orders on daily growth rates of covid-19 deaths and hospitalizations using event study models. *Health Affairs*, 39(9):1615–1623, 2020.
- [46] Joshua D Angrist and Jörn-Steffen Pischke. *Mostly harmless econometrics: An empiricist’s companion*. Princeton university press, 2008.
- [47] John Binder. The event study methodology since 1969. *Review of quantitative Finance and Accounting*, 11(2):111–137, 1998.
- [48] Jinyong Hahn, Petra Todd, and Wilbert Van der Klaauw. Identification and estimation of treatment effects with a regression-discontinuity design. *Econometrica*, 69(1):201–209, 2001.
- [49] David Holtz, Michael Zhao, Seth G Benzell, Cathy Y Cao, M Amin Rahimian, Jeremy Yang, Jennifer Nancy Lee Allen, Avinash Collis, Alex Vernon Moehring, Tara Sowrirajan, et al. Interdependence and the cost of uncoordinated responses to covid-19. 2020.
- [50] Neil Pearce, Jan P Vandenbroucke, Tyler J VanderWeele, and Sander Greenland. Accurate statistics on covid-19 are essential for policy guidance and decisions, 2020.
- [51] Ahmet Aktay, Shailesh Bavadekar, Gwen Cossoul, John Davis, Damien Desfontaines, Alex Fabrikant, Evgeniy Gabrilovich, Krishna Gadepalli, Bryant Gipson, Miguel Guevara, et al. Google covid-19 community mobility reports: Anonymization process description (version 1.0). *arXiv preprint arXiv:2004.04145*, 2020.
- [52] Steve Ansari, C Hutchins, and S Del Greco. The noaa weather and climate toolkit. *American Geophysical Union, Fall Meeting 2010, abstract id. IN32A-06*.
- [53] Wei-jie Guan, Zheng-yi Ni, Yu Hu, Wen-hua Liang, Chun-quan Ou, Jian-xing He, Lei Liu, Hong Shan, Chun-liang Lei, David SC Hui, et al. Clinical characteristics of coronavirus disease 2019 in china. *New England journal of medicine*, 382(18):1708–1720, 2020.
- [54] Kelvin Kai-Wang To, Owen Tak-Yin Tsang, Wai-Shing Leung, Anthony Raymond Tam, Tak-Chiu Wu, David Christopher Lung, Cyril Chik-Yan Yip, Jian-Piao Cai, Jacky Man-Chun Chan, Thomas Shiu-Hong Chik, et al. Temporal profiles of viral load in posterior oropharyngeal saliva samples and serum antibody responses during infection by sars-cov-2: an observational cohort study. *The Lancet Infectious Diseases*, 2020.
- [55] Giacomo Grasselli, Alberto Zangrillo, Alberto Zanella, Massimo Antonelli, Luca Cabrini, Antonio Castelli, Danilo Cereda, Antonio Coluccello, Giuseppe Foti, Roberto Fumagalli, et al. Baseline characteristics and outcomes of 1591 patients infected with sars-cov-2 admitted to icus of the lombardy region, italy. *JAMA*, 323(16):1574–1581, 2020.
- [56] Yan-Rong Guo, Qing-Dong Cao, Zhong-Si Hong, Yuan-Yang Tan, Shou-Deng Chen, Hong-Jun Jin, Kai-Sen Tan, De-Yun Wang, and Yan Yan. The origin, transmission and clinical therapies on coronavirus disease 2019 (covid-19) outbreak—an update on the status. *Military Medical Research*, 7(1):1–10, 2020.

# Working Paper

- [57] Qifang Bi, Yongsheng Wu, Shujiang Mei, Chenfei Ye, Xuan Zou, Zhen Zhang, Xiaojian Liu, Lan Wei, Shaun A Truelove, Tong Zhang, et al. Epidemiology and transmission of covid-19 in 391 cases and 1286 of their close contacts in shenzhen, china: a retrospective cohort study. *The Lancet Infectious Diseases*, 2020.
- [58] Covid-19 pandemic planning scenarios. Retrieved on Dec 4 2020 from [www.cdc.gov/coronavirus/2019-ncov/hcp/planning-scenarios.html](http://www.cdc.gov/coronavirus/2019-ncov/hcp/planning-scenarios.html).
- [59] Klaus Dietz. The estimation of the basic reproduction number for infectious diseases. *Statistical methods in medical research*, 2(1):23–41, 1993.
- [60] Fiona P Havers, Carrie Reed, Travis Lim, Joel M Montgomery, John D Klena, Aron J Hall, Alicia M Fry, Deborah L Cannon, Cheng-Feng Chiang, Aridth Gibbons, et al. Seroprevalence of antibodies to sars-cov-2 in 10 sites in the united states, march 23-may 12, 2020. *JAMA internal medicine*, 2020.
- [61] Chris Keeley, Jonathan Jimenez, Hannah Jackson, Leon Boudourakis, R James Salway, Natalia Cineas, Yvette Villanueva, Donnie Bell, Andrew B Wallach, Donna Boyle Schwartz, et al. Staffing up for the surge: Expanding the new york city public hospital workforce during the covid-19 pandemic: Article describes how new york city’s public health care system rapidly expanded capacity across 11 acute-care hospitals and three new field hospitals to meet the challenges of the covid-19 pandemic. *Health Affairs*, 39(8):1426–1430, 2020.
- [62] Seyed M Moghadas, Affan Shoukat, Meagan C Fitzpatrick, Chad R Wells, Pratha Sah, Abhishek Pandey, Jeffrey D Sachs, Zheng Wang, Lauren A Meyers, Burton H Singer, et al. Projecting hospital utilization during the covid-19 outbreaks in the united states. *Proceedings of the National Academy of Sciences*, 117(16):9122–9126, 2020.
- [63] Joseph J Cavallo, Daniel A Donoho, and Howard P Forman. Hospital capacity and operations in the coronavirus disease 2019 (covid-19) pandemic—planning for the nth patient. In *JAMA Health Forum*, volume 1, pages e200345–e200345. American Medical Association, 2020.
- [64] Gary E Weissman, Andrew Crane-Droesch, Corey Chivers, ThaiBinh Luong, Asaf Hanish, Michael Z Levy, Jason Lubken, Michael Becker, Michael E Draugelis, George L Anesi, et al. Locally informed simulation to predict hospital capacity needs during the covid-19 pandemic. *Annals of internal medicine*, 2020.
- [65] Serina Chang, Emma Pierson, Pang Wei Koh, Jaline Gerardin, Beth Redbird, David Grusky, and Jure Leskovec. Mobility network models of covid-19 explain inequities and inform reopening. *Nature*, pages 1–6, 2020.
- [66] Yu Xie. The log-multiplicative layer effect model for comparing mobility tables. *American sociological review*, pages 380–395, 1992.
- [67] Shovon Bhattacharjee, Prateek Bahl, Abrar Ahmad Chughtai, and C Raina MacIntyre. Last-resort strategies during mask shortages: optimal design features of cloth masks and decontamination of disposable masks during the covid-19 pandemic. *BMJ open respiratory research*, 7(1):e000698, 2020.
- [68] P de Man, B van Straten, J van den Dobbela, A van der Eijk, T Horeman, and H Koeleman. Sterilization of disposable face masks by means of standardized dry and steam sterilization processes; an alternative in the fight against mask shortages due to covid-19. *Journal of Hospital Infection*, 105(2):356–357, 2020.
- [69] MW Wang, MY Zhou, GH Ji, L Ye, YR Cheng, ZH Feng, and J Chen. Mask crisis during the covid-19 outbreak. *Eur Rev Med Pharmacol Sci*, 24(6):3397–9, 2020.
- [70] Victor Chernozhukov, Hiroyuki Kasaha, and Paul Schrimpf. Causal impact of masks, policies, behavior on early covid-19 pandemic in the us. *Journal of Econometrics*, 2021.

# Working Paper

- [71] Eunji Kim, Michael E Shepherd, and Joshua D Clinton. The effect of big-city news on rural america during the covid-19 pandemic. *Proceedings of the National Academy of Sciences*, 117(36):22009–22014, 2020.
- [72] Andrey Simonov, Szymon K Sacher, Jean-Pierre H Dubé, and Shirsho Biswas. The persuasive effect of fox news: non-compliance with social distancing during the covid-19 pandemic. Technical report, National Bureau of Economic Research, 2020.
- [73] Raj Chetty, J Friedman, Nathaniel Hendren, and Michael Stepner. The economic impacts of covid-19: Evidence from a new public database built from private sector data. *Opportunity Insights*, 2020.
- [74] Monica L Kasting, Katharine J Head, Jane A Hartsock, Lynne Sturm, and Gregory D Zimet. Public perceptions of the effectiveness of recommended non-pharmaceutical intervention behaviors to mitigate the spread of sars-cov-2. *PloS one*, 15(11):e0241662, 2020.
- [75] Plamen Nikolov, Andreas Pape, Ozlem Tonguc, and Charlotte Williams. Predictors of social distancing and mask-wearing behavior: Panel survey in seven us states. *arXiv preprint arXiv:2009.13103*, 2020.
- [76] François Salanié and Nicolas Treich. Public and private incentives for self-protection. *The Geneva Risk and Insurance Review*, 45(2):104–113, 2020.
- [77] Lesley Gray, Carol MacDonald, Natasha Tassell-Matamua, James Stanley, Amanda Kvalsvig, Jane Zhang, Samantha Murton, Siouxsie Wiles, Viliami Puloka, Julia Becker, et al. Wearing one for the team: views and attitudes to face covering in new zealand/aotearoa during covid-19 alert level 4 lockdown. *Journal of Primary Health Care*, 12(3):199–206, 2020.
- [78] Balázs Pejó and Gergely Biczók. Corona games: Masks, social distancing and mechanism design. In *Proceedings of the 1st ACM SIGSPATIAL International Workshop on Modeling and Understanding the Spread of COVID-19*, pages 24–31, 2020.
- [79] Timothy R Tangherlini, Shadi Shahsavari, Behnam Shahbazi, Ehsan Ebrahimzadeh, and Vwani Roychowdhury. An automated pipeline for the discovery of conspiracy and conspiracy theory narrative frameworks: Bridgegate, pizzagate and storytelling on the web. *PloS one*, 15(6):e0233879, 2020.
- [80] Daniel Weinstock. A harm reduction approach to the ethical management of the covid-19 pandemic. *Public Health Ethics*, 13(2):166–175, 2020.
- [81] Darrell M Gray, Adjoa Anyane-Yeboah, Sophie Balzora, Rachel B Issaka, and Folasade P May. Covid-19 and the other pandemic: populations made vulnerable by systemic inequity. *Nature Reviews Gastroenterology & Hepatology*, 17(9):520–522, 2020.
- [82] Mariella Scerri and Victor Grech. To wear or not to wear? adherence to face mask use during the covid-19 and spanish influenza pandemics. *Early human development*, page 105253, 2020.
- [83] C Makridis and JT Rothwell. The real cost of political polarization: Evidence from the covid-19 pandemic. 2020.
- [84] Simen Gaure. OLS with multiple high dimensional category variables. *Computational Statistics & Data Analysis*, 66:8–18, 2013.

# Working Paper

## Appendix

### A Data

#### A.1 State-level Mandate Introduction Dates and Types

To code the start (and, if any, the end) of a state’s mask mandate, we start with publicly available mask mandate datasets [26–28] and use their references to official state government memos. We use these memos to define the starting date of a state mandate to be the one that *requires* the wearing of masks either in public or in businesses – as opposed to using county-level mask mandates, or using mandates that merely encouraging people to wear masks. Some states had several memos within a couple of days requiring mask mandates (e.g., when mask mandates are bundled with other NPI’s) in which case we choose the earliest memo’s dates. Some states also had memos announcing the future start of a mask mandate and we use the start of the *implementation* of the mask mandates as the start date. Finally, some states had memos requiring all employees of all businesses to wear masks, *and*, typically later, memos requiring all members of the public to wear masks. We investigate all three possibilities of which type of mandates count as the start of a treatment: just mandates requiring business employees, just memos asking the public, or using whichever came first as the start date of a mandate.

Our table of mask mandate start and end dates is shown in supplementary table B in appendix B.

#### A.2 State-level COVID-19 Outcome and Mask Adherence Data

State-level COVID-19 outcome data was obtained from the Delphi project [29]: we use the daily new confirmed cases per 100K population, new confirmed deaths per 100K population, percentage of new hospital admissions with COVID-associated diagnoses, and the percentage of outpatient doctor visits primarily about COVID-related symptoms. In all cases, we use the smoothed outcomes measures using 7-day averages and with systematic day-of-week effects removed. Our outcome data covers all 50 states in addition to the District of Columbia, and runs from Feb 2, 2020 to September 27, 2020 (we cannot obtain data past September for some some outcomes such as hospitalization). 43 states and the District of Columbia had a required state-level mask mandates during this period of data. We make sure not to use any outcome data that was after a state’s mask mandate was officially lifted to prevent end-of-treatment effects from biasing our treatment estimates. Overall, this dataset contains 9,483 data points used for regression.

	Outcome			
	New confirmed COVID-19 cases	New confirmed deaths due to COVID-19	% of new hospital admissions with COVID-associated diagnoses	% of people who wore a mask for most or all of the time while in public in the past 5 days
<b>Source</b>	Delphi COVIDcast Epidata API	Delphi COVIDcast Epidata API	Delphi COVIDcast Epidata API	Delphi COVIDcast Epidata API
<b>Frequency</b>	Daily	Daily	Daily	Daily
<b>Geographical Resolution</b>	State-level	State-level	State-level	State-level
<b>Geographical Coverage</b>	All States and D.C.	All States and D.C.	All States and D.C.	Hawaii, Iowa, North Dakota, New Hampshire
<b>Date Range</b>	Feb. 1 - Sep 27 2020	Feb. 1 - Sep 27 2020	Feb. 1 - Sep 27 2020	Sep 8 - Nov 27, 2020
<b>Smoothing</b>	7-day average signal	7-day average signal	Systematic day-of-week effects removed	Seven day pooling
<b>Adjusted</b>	Per 100K population	Per 100K population	Per total admissions that day	Weighted to correct for a variety of biases
<b>Normalization</b>	Z-scored state-specific means and standard deviations	Z-scored state-specific means and standard deviations	Not Needed (already normalized as a percentage)	Z-scored state-specific means and standard deviations

Table 1: Characteristics of COVID-19 outcome variables

State-level mask adherence data (how much people are wearing face masks) was not available until the Delphi project [29] made it accessible on September 8, 2020. This data was obtained by the Delphi Project via online surveys of more than 1 million U.S. residents and we use their weighted state-level estimates as our indicator of state-level mask adherence. Their survey weighing [33] accounts for various factors including adjusting estimates so that they are representative of the US population according to a state-by-age-gender stratification, adjusting for the US Facebook user population, and adjusting for the propensity of a Facebook



# Working Paper

user to take the survey. For the regression of the effect of mask mandates on adherence, we have 323 data points for the four states, and for the regression of adherence on COVID-19 cases and deaths, we have 4,111 data points for all states (including D.C.).

### A.3 International Mask Norm and Adherence Data

International mask norm and adherence data was obtained from the COVID-19 Beliefs, Behaviors and Norms Survey\* [32] which collected more half a million online Facebook survey responses in 51 languages, from 68 countries. The survey was deployed in 8 waves starting on July 7, 2020 and is still on-going. Each survey response comes with a weight that allows for representativeness of estimates at the country and wave-level. Weights are calculated to account for a variety of biases including demographics (age bracket and gender) of the respondents compared to the census data in each country (through post-stratification), and response or non-response behaviors. The reported design effects due to both the non-response and post-stratification weighting was below four. In our analysis, we only use survey responses where the full survey was completed (including the demographic part) and where the mask-related questions we use in our analysis were completed. Overall, we have 479,917 data points covering 8 waves of analysis.

### A.4 Controls

We control for a number of variables in our analyses: we use restaurant and recreation, grocery and pharmacy, parks, transit stations, workplace and residential percentage change from baseline (using the median day-of-the-week value from the first 5 weeks of January and February) mobility data from Google's COVID-19 Community Mobility Reports [51]; new tests per 100K population from the COVID Tracking Project [30], and temperature and precipitation data from NOAA's Weather and Climate Toolkit [52]. For international mask norm and adherence, we obtain COVID-19 country-level confirmed cases and confirmed deaths from the Our World in Data initiative [31].

Because we also include the squared values of each mobility indicator as a proxy for social contacts ([65,66]), we first re-scale the Google mobility index [51] as such: re-scaled mobility = (mobility + 100)/100. This is done to prevent the issue of Google's the square of negative mobility indicator values to be the same as the positive values.

---

\*See <https://covidsurvey.mit.edu> for more details.

# Working Paper

	Source	Freq.	Geograph. Resolution	Date Range	Normalization
<b>Retail+recreation mobility</b>	Google Mobility Reports	Daily	State-level	Feb 1-Sep 27 2020	Median day of the week baseline
<b>Grocery+pharmacy mobility</b>	Google Mobility Reports	Daily	State-level	Feb 1-Sep 27 2020	Median day of the week baseline
<b>Parks mobility</b>	Google Mobility Reports	Daily	State-level	Feb 1-Sep 27 2020	Median day of the week baseline
<b>Transit stations mobility</b>	Google Mobility Reports	Daily	State-level	Feb 1-Sep 27 2020	Median day of the week baseline
<b>Workplaces mobility</b>	Google Mobility Reports	Daily	State-level	Feb 1-Sep 27 2020	Median day of the week baseline
<b>Residential mobility</b>	Google Mobility Reports	Daily	State-level	Feb 1-Sep 27 2020	Median day of the week baseline
<b>Temperature</b>	NOAA	Daily	State-level	Feb 1-Sep 27 2020	Avg daily temperature
<b>Precipitation</b>	NOAA	Daily	State-level	Feb 1-Sep 27 2020	Avg daily precipitation
<b>Population Density</b>	Oxford World in Data	Daily	State-level	Feb 1-Sep 27 2020	Per square. km
<b>Human Develop. Index</b>	Oxford World in Data	Daily	Country-level	Feb 1-Sep 27 2020	Relative to UNDP limits
<b>New Test Rate</b>	COVID Tracking Project	Daily	Country-level	Feb 1-Sep 27 2020	Per 100K population

Table 2: Characteristics of control variables

# Working Paper

## B State-level Mask Mandates Dates

State	Public Mask Mandates	Business Mask Mandates	State Ended Mask Mandates
Alabama	7/16/20	5/11/20	-
Alaska	4/24/20	4/24/20	5/22/20
Arizona	-	5/8/20	-
Arkansas	7/20/20	5/11/20	-
California	6/18/20	5/5/20	-
Colorado	7/16/20	4/23/20	-
Connecticut	4/20/20	4/3/20	-
Delaware	4/28/20	5/1/20	-
District of Columbia	4/17/20	4/15/20	-
Florida	-	5/11/20	-
Georgia	-	4/27/20	-
Hawaii	11/16/20	4/16/20	-
Idaho	-	-	-
Illinois	5/1/20	5/1/20	-
Indiana	7/27/20	5/1/20	-
Iowa	-	11/16/20	-
Kansas	7/3/20	7/3/20	-
Kentucky	5/11/20	5/11/20	-
Louisiana	-	5/1/20	-
Maine	5/1/20	5/1/20	-
Maryland	4/18/20	4/18/20	-
Massachusetts	5/6/20	5/6/20	-
Michigan	4/27/20	4/26/20	-
Minnesota	7/24/20	6/1/20	-
Mississippi	8/5/20	5/7/20	9/30/20
Missouri	-	-	-
Montana	-	-	-
Nebraska	-	5/4/20	-
Nevada	6/26/20	5/9/20	-
New Hampshire	11/20/20	5/1/20	-
New Jersey	4/8/20	4/8/20	-
New Mexico	5/15/20	5/6/20	-
New York	4/17/20	4/17/20	-
North Carolina	6/26/20	6/26/20	-
North Dakota	11/14/20	4/28/20	-
Ohio	7/23/20	4/29/20	-
Oklahoma	-	-	-
Oregon	7/1/20	5/9/20	-
Pennsylvania	7/1/20	4/19/20	-
Rhode Island	4/18/20	4/18/20	-
South Carolina	-	8/3/20	-
South Dakota	-	-	-
Tennessee	-	-	-
Texas	7/3/20	5/8/20	-
Utah	4/10/20	4/10/20	5/1/20
Vermont	8/1/20	4/17/20	-
Virginia	5/29/20	5/29/20	-
Washington	6/26/20	5/4/20	-
West Virginia	7/7/20	5/4/20	-
Wisconsin	8/1/20	8/1/20	-
Wyoming	-	5/1/20	-

Table 3: Mask mandate start and end dates as of Nov 30, 2020

# Working Paper

## C Event Study Results

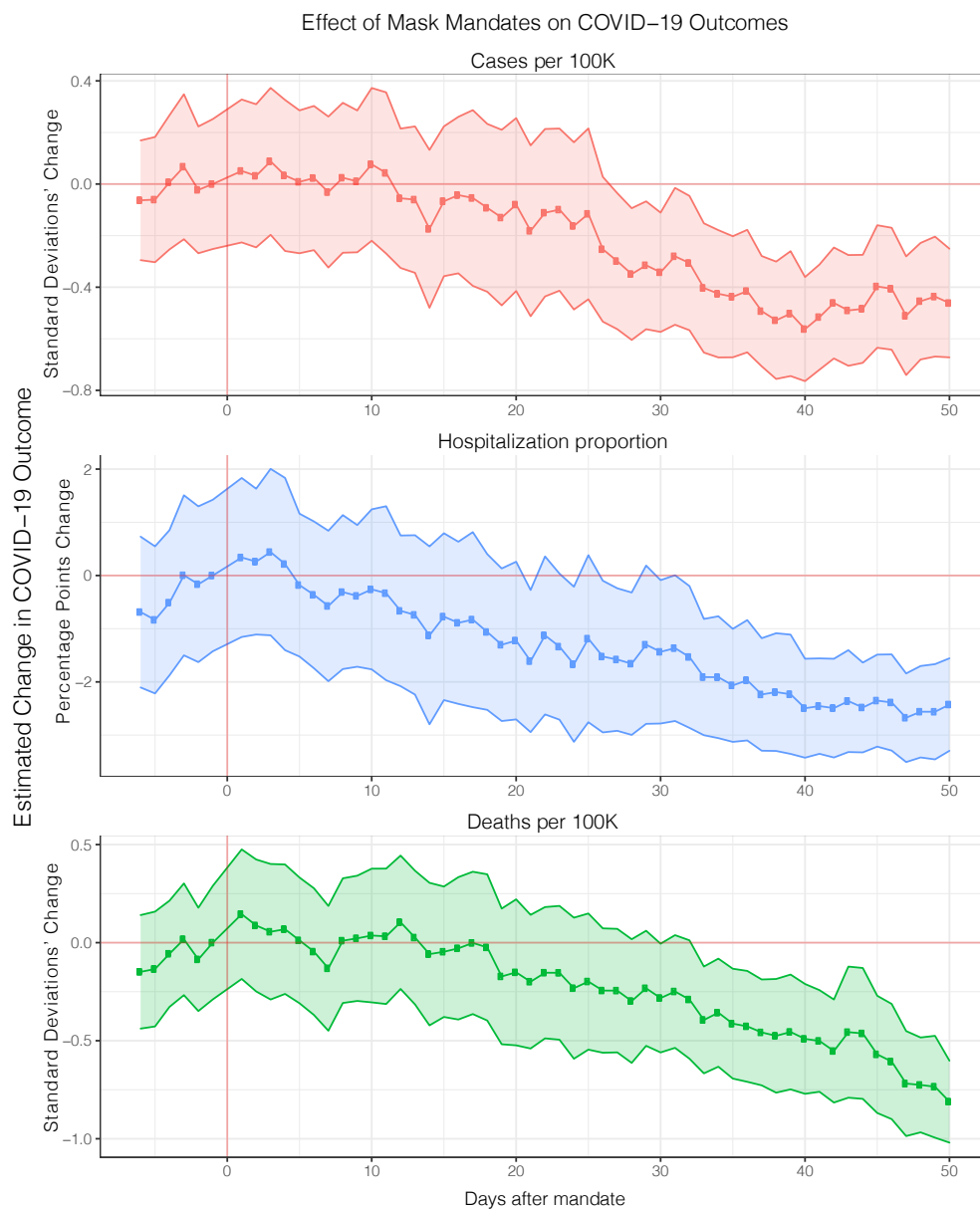


Figure 4: Robustness check of main event study results (section 1.1 fig. 1) where we only consider mask mandates that require business employees to wear masks. Because the trajectory and magnitude of the treatment effect is consistent with our previous main result under this new specification, this demonstrates that our main result is not sensitive to our definition of mask mandate start dates. Full regression results are shown in table 6.

# Working Paper

## Effect of Mask Mandates on COVID-19 Outcomes

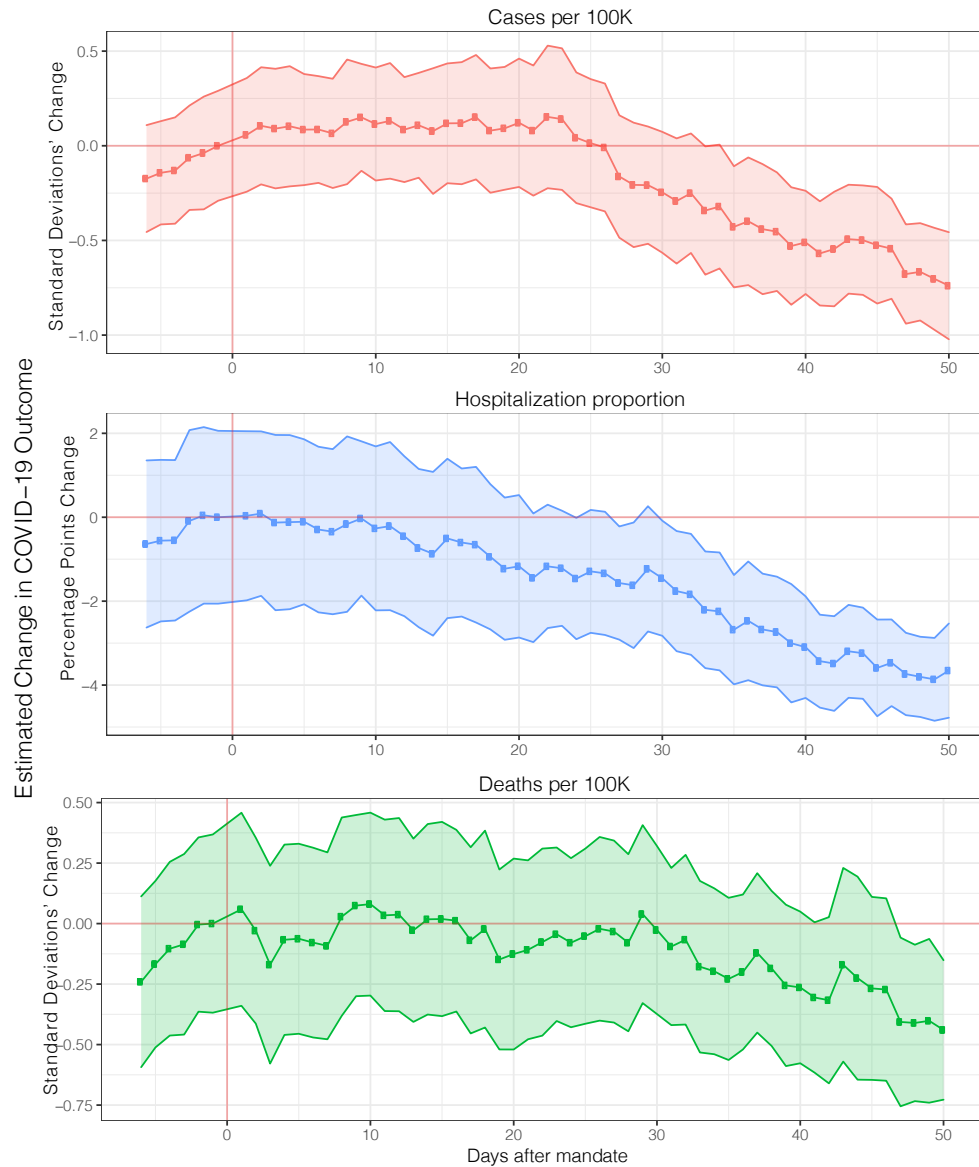


Figure 5: Robustness check of main event study results (section 1.1 fig. 1) where we only consider mask mandates that require *all* members of the public to wear a mask outside. Because the trajectory and magnitude of the treatment effect is consistent with our previous main result under this new specification, this demonstrates that our main result is not sensitive to our definition of mask mandate start dates. Full regression results are shown in table 5.



# Working Paper

## Effect of Mask Mandates on COVID-19 Outcomes

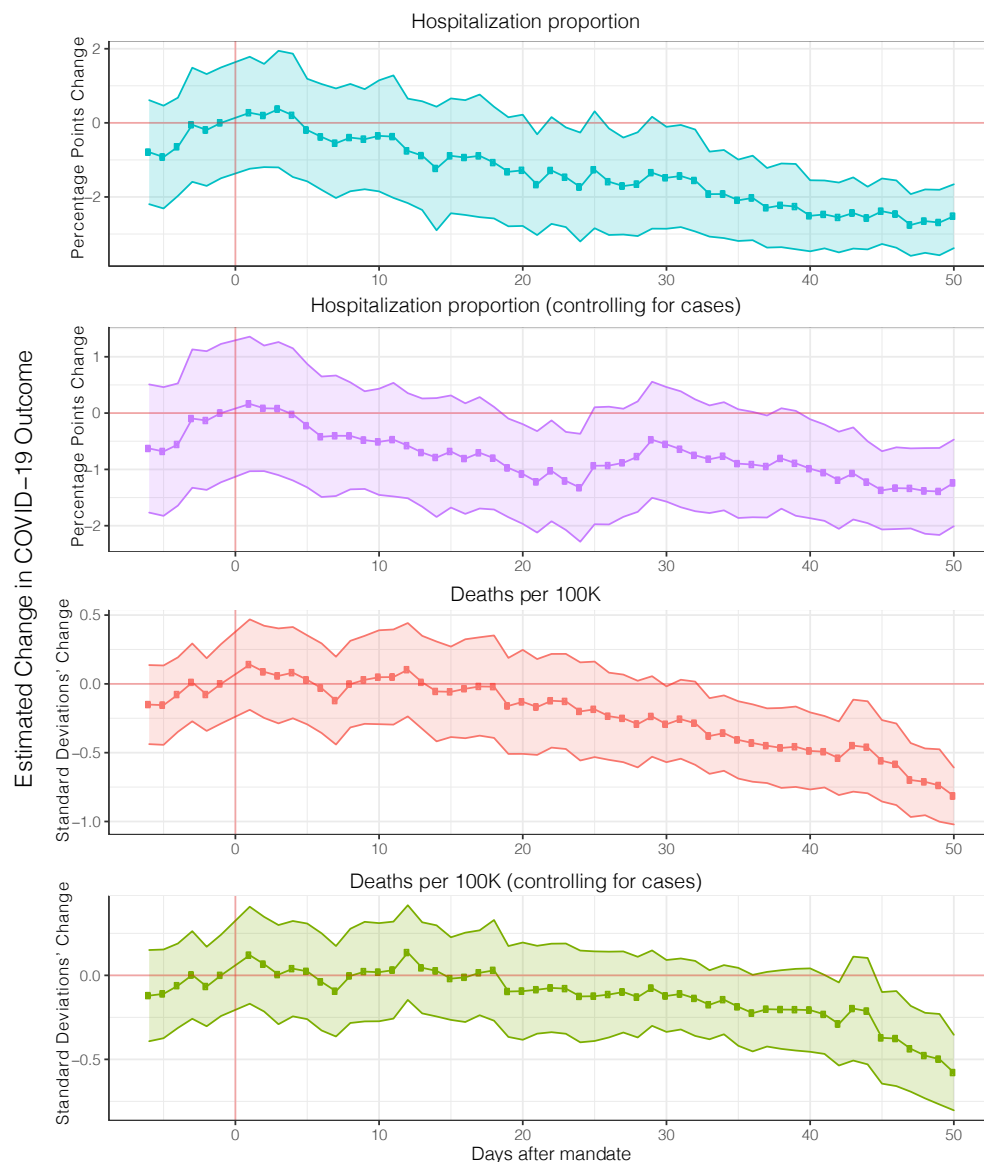


Figure 6: Robustness check of main event study results (section 1.1 fig. 1) where we compare the effect of mask mandates on deaths and hospitalization with and without controlling for cases. Because the trajectory and magnitude of the treatment effect is consistent with our previous main result under either specification (with and without controlling for cases), this demonstrates that our main result is not sensitive to whether we account for the cases underlying the more severe outcomes. Full regression results are shown in table 7.

# Working Paper

## Effect of Mask Mandates on COVID-19 Outcomes

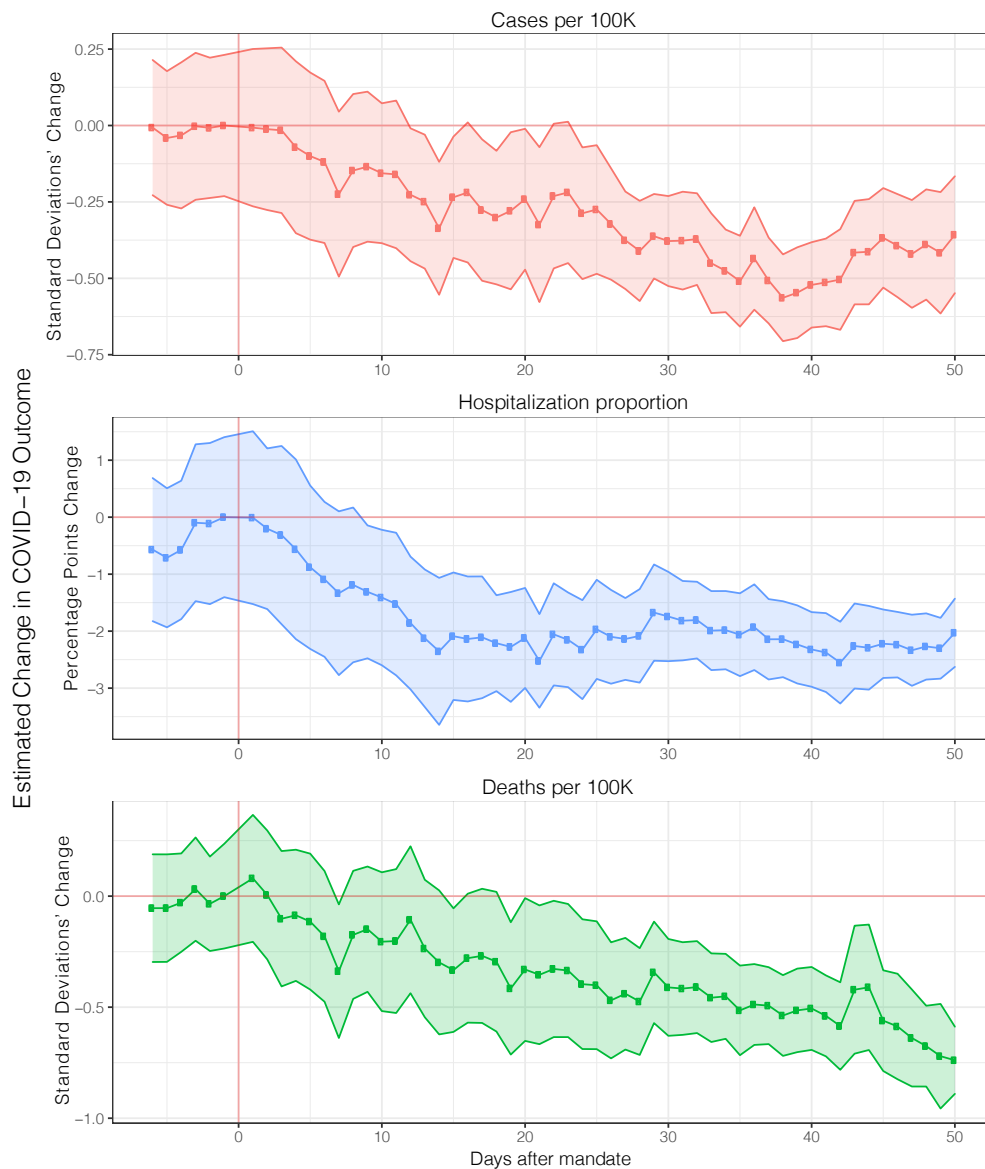


Figure 7: Robustness check of main event study results (section 1.1 fig. 1) where we control for past outcome values (with a delay of 14 days) and growth rates as a way to minimize confounding due to peoples private behavioral changes to COVID-19 [70]. As can be see in the figure, the overall trajectory and magnitude of the treatment effect is consistent with our previous main result. Full regression results are shown in table 8.

# Working Paper

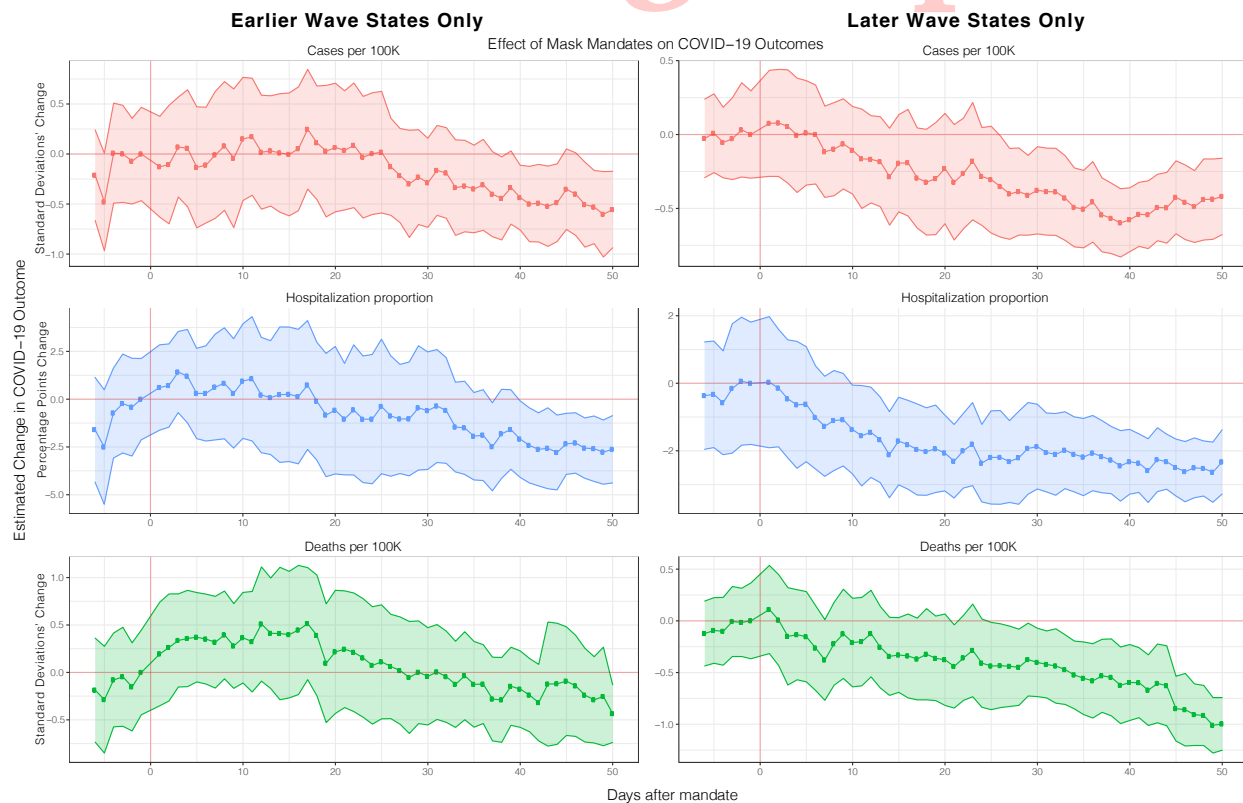


Figure 8: Robustness check of main event study results (section 1.1 fig. 1) where we compare the effect of mask mandates on cases, deaths and hospitalization for earlier wave states only (i.e. states who had early spikes of COVID-19 peaks in the pandemic, namely, NY, NJ, MA, CT, MI, DC, RI, IL, WA, PA, GA, VT, MD, FL and LA) vs later wave states. Masks mandates took more time to have an effect on earlier states whereas they had a faster effect on later states. However, because the trajectory and magnitude of the treatment effect overall is consistent with our previous main result, this demonstrates that our main result is applicable to both earlier and later waves. Full regression results are shown in tables 9 and 10.

# Working Paper

Table 4: Event Study regression summary statistics for main result (section 1.1 fig. 1)

	<i>Dependent variable:</i>		
	confirmed cases (1)	deaths (2)	hospitalization (3)
new test rate	65.681*** (19.291)	8.213 (13.156)	167.056** (63.404)
precipitation avg	-0.001 (0.001)	-0.003* (0.002)	0.005 (0.008)
temperature avg	0.013*** (0.005)	-0.002 (0.007)	0.017 (0.023)
retail and recreation	-8.090** (3.355)	0.926 (2.942)	-35.976* (20.413)
grocery and pharmacy	3.973 (3.967)	-4.685 (3.525)	17.138 (24.066)
parks	0.518*** (0.138)	0.311** (0.134)	1.791*** (0.504)
transit stations	-1.189 (0.850)	-0.069 (0.679)	-6.080* (3.540)
workplaces	-0.825 (1.077)	0.264 (0.931)	7.698 (5.462)
residential	-79.713*** (12.106)	-51.855*** (10.847)	-418.697*** (76.307)
grocery and pharmacy square	-1.910 (1.759)	2.116 (1.592)	-7.803 (10.485)
retail and recreation square	3.778** (1.814)	-1.427 (1.568)	15.659 (10.762)
parks square	-0.130*** (0.028)	-0.051* (0.027)	-0.336*** (0.105)
transit stations square	0.906 (0.546)	0.024 (0.469)	3.626* (1.935)
workplaces square	0.007 (0.741)	-0.397 (0.645)	-9.185** (3.701)
residential square	36.758*** (5.356)	24.743*** (4.897)	192.422*** (34.627)
day -6	0.509*** (0.125)	0.762*** (0.151)	2.729*** (0.733)

# Working Paper

day -5	0.477*** (0.116)	0.758*** (0.152)	2.583*** (0.706)
day -4	0.525*** (0.129)	0.826*** (0.139)	2.835*** (0.690)
day -3	0.574*** (0.133)	0.916*** (0.143)	3.436*** (0.801)
day -2	0.540*** (0.126)	0.834*** (0.135)	3.307*** (0.786)
day -1	0.563*** (0.134)	0.909*** (0.147)	3.504*** (0.785)
day 1	0.621*** (0.150)	1.065*** (0.169)	3.833*** (0.816)
day 2	0.622*** (0.151)	1.013*** (0.170)	3.757*** (0.749)
day 3	0.669*** (0.155)	0.966*** (0.173)	3.875*** (0.824)
day 4	0.638*** (0.163)	0.985*** (0.168)	3.684*** (0.853)
day 5	0.568*** (0.148)	0.934*** (0.166)	3.291*** (0.727)
day 6	0.580*** (0.147)	0.883*** (0.167)	3.129*** (0.742)
day 7	0.508*** (0.156)	0.785*** (0.164)	2.950*** (0.776)
day 8	0.592*** (0.154)	0.928*** (0.165)	3.188*** (0.775)
day 9	0.586*** (0.146)	0.943*** (0.163)	3.093*** (0.703)
day 10	0.618*** (0.151)	0.954*** (0.173)	3.143*** (0.769)
day 11	0.605*** (0.162)	0.966*** (0.175)	3.148*** (0.860)
day 12	0.502*** (0.145)	1.015*** (0.173)	2.763*** (0.745)
day 13	0.497*** (0.149)	0.922*** (0.174)	2.622*** (0.764)



# Working Paper

day 14	0.405** (0.167)	0.860*** (0.188)	2.285** (0.874)
day 15	0.514*** (0.153)	0.876*** (0.168)	2.694*** (0.820)
day 16	0.540*** (0.162)	0.896*** (0.183)	2.640*** (0.823)
day 17	0.502*** (0.176)	0.897*** (0.183)	2.638*** (0.866)
day 18	0.470*** (0.168)	0.895*** (0.190)	2.450*** (0.779)
day 19	0.450** (0.181)	0.764*** (0.179)	2.228*** (0.768)
day 20	0.498*** (0.177)	0.788*** (0.193)	2.245*** (0.776)
day 21	0.391** (0.183)	0.732*** (0.183)	1.812** (0.715)
day 22	0.488*** (0.180)	0.803*** (0.175)	2.278*** (0.765)
day 23	0.493*** (0.172)	0.804*** (0.175)	2.116*** (0.712)
day 24	0.411** (0.171)	0.708*** (0.182)	1.760** (0.767)
day 25	0.449** (0.175)	0.735*** (0.179)	2.258*** (0.823)
day 26	0.330** (0.149)	0.682*** (0.162)	1.938** (0.754)
day 27	0.268* (0.139)	0.666*** (0.164)	1.816** (0.687)
day 28	0.259* (0.142)	0.633*** (0.163)	1.904** (0.742)
day 29	0.275** (0.136)	0.700*** (0.153)	2.247*** (0.809)
day 30	0.254* (0.129)	0.642*** (0.142)	2.115*** (0.747)
day 31	0.284* (0.142)	0.662*** (0.149)	2.102*** (0.734)

# Working Paper

day 32	0.282* (0.142)	0.640*** (0.157)	1.985*** (0.732)
day 33	0.174 (0.135)	0.546*** (0.143)	1.625** (0.618)
day 34	0.151 (0.131)	0.564*** (0.143)	1.610** (0.631)
day 35	0.146 (0.129)	0.520*** (0.149)	1.466** (0.601)
day 36	0.186 (0.135)	0.506*** (0.146)	1.566** (0.635)
day 37	0.087 (0.117)	0.476*** (0.142)	1.253** (0.586)
day 38	0.034 (0.118)	0.438*** (0.149)	1.247** (0.588)
day 39	0.072 (0.130)	0.462*** (0.150)	1.270** (0.616)
day 40	0.023 (0.109)	0.438*** (0.142)	1.048** (0.512)
day 41	0.042 (0.107)	0.415*** (0.135)	1.023** (0.489)
day 42	0.063 (0.114)	0.368** (0.138)	0.942* (0.496)
day 43	0.093 (0.116)	0.487*** (0.172)	1.150** (0.516)
day 44	0.086 (0.111)	0.463*** (0.171)	0.974** (0.463)
day 45	0.185 (0.121)	0.343** (0.151)	1.099** (0.457)
day 46	0.147 (0.124)	0.323** (0.153)	1.039** (0.487)
day 47	0.046 (0.119)	0.212 (0.137)	0.762* (0.448)
day 48	0.090 (0.115)	0.192 (0.123)	0.834* (0.450)
day 49	0.083 (0.121)	0.166 (0.138)	0.804* (0.469)

# Working Paper

day 50	0.109 (0.113)	0.105 (0.108)	1.037** (0.472)
Constant	42.748*** (7.496)	27.633*** (6.439)	236.021*** (47.186)
Observations	9,813	9,813	9,813
R <sup>2</sup>	0.439	0.313	0.518
Adjusted R <sup>2</sup>	0.431	0.304	0.511
Residual Std. Error (df = 9689)	0.753	0.832	3.395

*Note:*

\*p<0.1; \*\*p<0.05; \*\*\*p<0.01

# Working Paper

Table 5: Event Study regression summary statistics for robustness check (fig. 5) where we only consider mask mandates that require *all* members of the public to wear a mask outside

	<i>Dependent variable:</i>		
	confirmed cases	deaths	hospitalization
	(1)	(2)	(3)
new test rate	68.939*** (18.368)	10.026 (12.426)	173.569*** (58.627)
precipitation	0.0001 (0.001)	-0.001 (0.002)	0.009 (0.008)
temperature	0.006 (0.004)	-0.004 (0.007)	-0.001 (0.024)
retail and recreation	-0.001 (0.004)	-0.018*** (0.005)	-0.036* (0.021)
grocery and pharmacy	0.001 (0.005)	-0.003 (0.006)	0.014 (0.032)
parks	0.004*** (0.001)	0.005*** (0.001)	0.017*** (0.004)
transit stations	-0.001 (0.004)	-0.007 (0.004)	-0.015 (0.013)
workplaces	0.003 (0.005)	0.004 (0.005)	-0.066** (0.025)
residential	-0.016 (0.017)	0.019 (0.014)	-0.175** (0.072)
grocery and pharmacy square	-0.0002 (0.0001)	0.0002 (0.0002)	-0.001 (0.001)
retail and recreation square	0.0002 (0.0002)	-0.0003* (0.0002)	0.001 (0.001)
parks square	-0.00002*** (0.00000)	-0.00001*** (0.00000)	-0.00005*** (0.00001)
transit stations square	0.0003** (0.0001)	0.0002** (0.0001)	0.001* (0.001)
workplaces square	0.00002 (0.0001)	-0.0001 (0.0001)	-0.001** (0.0004)
residential square	0.002*** (0.0005)	0.001*** (0.0005)	0.014*** (0.003)
day -6	0.682***	0.372**	3.646***

# Working Paper

	(0.144)	(0.180)	(1.016)
day -5	0.713*** (0.139)	0.445** (0.176)	3.727*** (0.982)
day -4	0.725*** (0.143)	0.509*** (0.183)	3.735*** (0.975)
day -3	0.792*** (0.141)	0.527*** (0.190)	4.198*** (1.103)
day -2	0.818*** (0.152)	0.608*** (0.184)	4.329*** (1.073)
day -1	0.856*** (0.148)	0.612*** (0.188)	4.285*** (1.051)
day 1	0.913*** (0.153)	0.671*** (0.203)	4.319*** (1.028)
day 2	0.961*** (0.158)	0.583*** (0.196)	4.371*** (1.000)
day 3	0.946*** (0.161)	0.443** (0.208)	4.157*** (1.066)
day 4	0.959*** (0.162)	0.546*** (0.201)	4.168*** (1.058)
day 5	0.941*** (0.150)	0.550*** (0.200)	4.177*** (1.003)
day 6	0.942*** (0.144)	0.534** (0.200)	3.991*** (1.007)
day 7	0.921*** (0.147)	0.520** (0.197)	3.940*** (1.004)
day 8	0.982*** (0.168)	0.641*** (0.209)	4.121*** (1.067)
day 9	1.006*** (0.144)	0.687*** (0.191)	4.255*** (0.938)
day 10	0.970*** (0.152)	0.693*** (0.193)	4.019*** (0.997)
day 11	0.987*** (0.156)	0.646*** (0.202)	4.073*** (1.022)
day 12	0.941*** (0.141)	0.649*** (0.204)	3.831*** (0.972)
day 13	0.964***	0.585***	3.549***

# Working Paper

	(0.141)	(0.193)	(0.962)
day 14	0.933*** (0.169)	0.630*** (0.201)	3.413*** (0.996)
day 15	0.974*** (0.161)	0.631*** (0.205)	3.779*** (0.969)
day 16	0.975*** (0.164)	0.624*** (0.191)	3.682*** (0.900)
day 17	1.007*** (0.168)	0.543*** (0.196)	3.630*** (0.946)
day 18	0.936*** (0.167)	0.590*** (0.208)	3.341*** (0.883)
day 19	0.948*** (0.165)	0.464** (0.190)	3.058*** (0.864)
day 20	0.977*** (0.173)	0.487** (0.201)	3.116*** (0.866)
day 21	0.936*** (0.175)	0.504** (0.189)	2.841*** (0.782)
day 22	1.008*** (0.192)	0.536*** (0.197)	3.114*** (0.750)
day 23	0.997*** (0.191)	0.568*** (0.183)	3.068*** (0.700)
day 24	0.898*** (0.176)	0.533*** (0.178)	2.823*** (0.738)
day 25	0.869*** (0.173)	0.560*** (0.185)	2.994*** (0.747)
day 26	0.847*** (0.172)	0.591*** (0.194)	2.947*** (0.749)
day 27	0.693*** (0.165)	0.579*** (0.192)	2.716*** (0.688)
day 28	0.649*** (0.168)	0.533*** (0.187)	2.662*** (0.764)
day 29	0.648*** (0.158)	0.651*** (0.188)	3.055*** (0.761)
day 30	0.610*** (0.163)	0.586*** (0.177)	2.830*** (0.700)
day 31	0.564***	0.518***	2.524***

# Working Paper

	(0.169)	(0.166)	(0.730)
day 32	0.605*** (0.161)	0.546*** (0.179)	2.447*** (0.735)
day 33	0.514*** (0.173)	0.434** (0.181)	2.078*** (0.709)
day 34	0.535*** (0.167)	0.415** (0.175)	2.040*** (0.717)
day 35	0.428** (0.163)	0.384** (0.171)	1.604** (0.665)
day 36	0.457** (0.172)	0.412** (0.163)	1.815** (0.722)
day 37	0.415** (0.175)	0.491*** (0.168)	1.609** (0.679)
day 38	0.402** (0.160)	0.427** (0.163)	1.549** (0.673)
day 39	0.326** (0.158)	0.357** (0.170)	1.281* (0.719)
day 40	0.345** (0.139)	0.348** (0.160)	1.189* (0.618)
day 41	0.287** (0.140)	0.307* (0.158)	0.854 (0.565)
day 42	0.310** (0.154)	0.296* (0.175)	0.798 (0.575)
day 43	0.362** (0.147)	0.442** (0.204)	1.089* (0.565)
day 44	0.357** (0.147)	0.387* (0.214)	1.044* (0.554)
day 45	0.330** (0.157)	0.344* (0.193)	0.694 (0.588)
day 46	0.312** (0.135)	0.340* (0.192)	0.816 (0.527)
day 47	0.178 (0.134)	0.206 (0.178)	0.549 (0.500)
day 48	0.190 (0.131)	0.202 (0.165)	0.481 (0.487)
day 49	0.152	0.211	0.421



# Working Paper

	(0.137)	(0.173)	(0.504)
day 50	0.116 (0.144)	0.173 (0.147)	0.629 (0.573)
Constant	-2.978*** (0.160)	-2.235*** (0.223)	-2.736*** (1.005)
<hr/>			
Observations	9,813	9,813	9,813
R <sup>2</sup>	0.504	0.276	0.542
Adjusted R <sup>2</sup>	0.497	0.267	0.536
Residual Std. Error (df = 9689)	0.708	0.854	3.307

*Note:*

\*p<0.1; \*\*p<0.05; \*\*\*p<0.01

# Working Paper

Table 6: Event Study regression summary statistics for robustness check (fig. 4) where we only consider mask mandates that require business employees to wear masks.

	<i>Dependent variable:</i>		
	confirmed cases (1)	deaths (2)	hospitalization (3)
new test rate	69.538*** (19.460)	11.046 (12.597)	178.980*** (60.971)
precipitation	-0.0004 (0.001)	-0.002 (0.002)	0.007 (0.008)
temperature	0.012** (0.005)	-0.003 (0.007)	0.013 (0.023)
retail and recreation	-0.002 (0.004)	-0.017*** (0.004)	-0.036* (0.020)
grocery and pharmacy	0.003 (0.005)	-0.004 (0.005)	0.019 (0.033)
parks	0.005*** (0.001)	0.004*** (0.001)	0.018*** (0.005)
transit stations	0.003 (0.005)	-0.003 (0.004)	0.004 (0.011)
workplaces	-0.0004 (0.005)	0.001 (0.005)	-0.084*** (0.026)
residential	-0.031* (0.017)	0.001 (0.013)	-0.249*** (0.078)
grocery and pharmacy square	-0.0003* (0.0002)	0.0002 (0.0001)	-0.001 (0.001)
retail and recreation square	0.0003 (0.0002)	-0.0002 (0.0002)	0.001 (0.001)
parks square	-0.00002*** (0.00000)	-0.00001*** (0.00000)	-0.0001*** (0.00002)
transit stations square	0.0003*** (0.0001)	0.0002* (0.0001)	0.001* (0.001)
workplaces square	-0.00001 (0.0001)	-0.0001 (0.0001)	-0.001** (0.0004)
residential square	0.003*** (0.001)	0.002*** (0.0005)	0.017*** (0.003)
day -6	0.458***	0.734***	2.609***

# Working Paper

	(0.118)	(0.148)	(0.723)
day -5	0.461*** (0.124)	0.748*** (0.149)	2.461*** (0.705)
day -4	0.528*** (0.133)	0.826*** (0.138)	2.784*** (0.696)
day -3	0.588*** (0.143)	0.900*** (0.145)	3.300*** (0.768)
day -2	0.499*** (0.125)	0.798*** (0.134)	3.132*** (0.747)
day -1	0.521*** (0.129)	0.883*** (0.148)	3.296*** (0.727)
day 1	0.572*** (0.141)	1.028*** (0.168)	3.635*** (0.762)
day 2	0.553*** (0.142)	0.971*** (0.172)	3.557*** (0.699)
day 3	0.609*** (0.145)	0.939*** (0.176)	3.736*** (0.798)
day 4	0.554*** (0.149)	0.952*** (0.168)	3.511*** (0.826)
day 5	0.530*** (0.141)	0.895*** (0.164)	3.116*** (0.685)
day 6	0.544*** (0.143)	0.837*** (0.165)	2.932*** (0.704)
day 7	0.490*** (0.149)	0.752*** (0.162)	2.723*** (0.721)
day 8	0.545*** (0.148)	0.893*** (0.162)	2.984*** (0.738)
day 9	0.531*** (0.140)	0.905*** (0.163)	2.912*** (0.679)
day 10	0.597*** (0.151)	0.919*** (0.174)	3.035*** (0.767)
day 11	0.564*** (0.159)	0.915*** (0.176)	2.963*** (0.834)
day 12	0.466*** (0.138)	0.987*** (0.173)	2.632*** (0.722)
day 13	0.461***	0.909***	2.555***

# Working Paper

	(0.145)	(0.174)	(0.764)
day 14	0.347** (0.156)	0.825*** (0.185)	2.170** (0.853)
day 15	0.454*** (0.148)	0.837*** (0.170)	2.522*** (0.800)
day 16	0.478*** (0.155)	0.854*** (0.185)	2.406*** (0.777)
day 17	0.467*** (0.174)	0.882*** (0.185)	2.466*** (0.839)
day 18	0.429** (0.166)	0.859*** (0.190)	2.234*** (0.747)
day 19	0.391** (0.174)	0.711*** (0.177)	1.994*** (0.731)
day 20	0.441** (0.171)	0.732*** (0.190)	2.073*** (0.756)
day 21	0.340** (0.169)	0.684*** (0.174)	1.687** (0.681)
day 22	0.410** (0.166)	0.730*** (0.171)	2.170*** (0.757)
day 23	0.422** (0.160)	0.729*** (0.174)	1.959*** (0.700)
day 24	0.359** (0.165)	0.651*** (0.183)	1.627** (0.744)
day 25	0.406** (0.169)	0.685*** (0.177)	2.108** (0.801)
day 26	0.268* (0.143)	0.639*** (0.162)	1.772** (0.728)
day 27	0.222 (0.135)	0.638*** (0.161)	1.716** (0.684)
day 28	0.172 (0.130)	0.585*** (0.161)	1.638** (0.683)
day 29	0.206 (0.126)	0.650*** (0.150)	1.995** (0.759)
day 30	0.179 (0.118)	0.600*** (0.141)	1.861*** (0.688)
day 31	0.241* (0.118)	0.634*** (0.141)	1.931*** (0.688)

# Working Paper

	(0.135)	(0.147)	(0.699)
day 32	0.215 (0.133)	0.593*** (0.154)	1.764** (0.680)
day 33	0.118 (0.128)	0.489*** (0.139)	1.386** (0.557)
day 34	0.096 (0.126)	0.526*** (0.141)	1.384** (0.584)
day 35	0.084 (0.120)	0.470*** (0.143)	1.230** (0.542)
day 36	0.106 (0.121)	0.456*** (0.144)	1.327** (0.577)
day 37	0.028 (0.109)	0.425*** (0.138)	1.060* (0.539)
day 38	-0.007 (0.116)	0.408*** (0.148)	1.104* (0.565)
day 39	0.019 (0.124)	0.428*** (0.149)	1.063* (0.572)
day 40	-0.041 (0.103)	0.392*** (0.143)	0.801* (0.475)
day 41	0.005 (0.104)	0.382*** (0.132)	0.841* (0.458)
day 42	0.060 (0.110)	0.330** (0.134)	0.803* (0.473)
day 43	0.031 (0.110)	0.427** (0.171)	0.935* (0.489)
day 44	0.037 (0.107)	0.420** (0.170)	0.815* (0.431)
day 45	0.124 (0.121)	0.313** (0.152)	0.944** (0.441)
day 46	0.115 (0.121)	0.277* (0.150)	0.909* (0.461)
day 47	0.011 (0.117)	0.164 (0.137)	0.622 (0.425)
day 48	0.067 (0.115)	0.158 (0.123)	0.735* (0.438)
day 49	0.085	0.148	0.735

# Working Paper

	(0.119)	(0.133)	(0.457)
day 50	0.060 (0.107)	0.072 (0.107)	0.870* (0.443)
Constant	-3.190*** (0.162)	-2.508*** (0.194)	-3.768*** (1.008)
Observations	9,813	9,813	9,813
R <sup>2</sup>	0.452	0.322	0.523
Adjusted R <sup>2</sup>	0.445	0.314	0.517
Residual Std. Error (df = 9689)	0.744	0.826	3.376

*Note:*

\*p<0.1; \*\*p<0.05; \*\*\*p<0.01

# Working Paper

Table 7: Event Study regression summary statistics for robustness check (fig. 6) where we compare the effect of mask mandates on deaths and hospitalization with and without controlling for cases.

	<i>Dependent variable:</i>			
	deaths (1)	deaths (2)	hospitalization (3)	hospitalization (4)
confirmed cases		0.507*** (0.033)		2.746*** (0.340)
new test rate	11.046 (12.597)	-24.204** (10.831)	178.980*** (60.971)	-12.161 (52.943)
precipitation	-0.002 (0.002)	-0.002 (0.002)	0.007 (0.008)	0.008 (0.007)
temperature	-0.003 (0.007)	-0.009 (0.006)	0.013 (0.023)	-0.019 (0.022)
retail and recreation	-0.017*** (0.004)	-0.016*** (0.004)	-0.036* (0.020)	-0.031* (0.016)
grocery and pharmacy	-0.004 (0.005)	-0.005 (0.004)	0.019 (0.033)	0.012 (0.025)
parks	0.004*** (0.001)	0.002** (0.001)	0.018*** (0.005)	0.005 (0.003)
transit stations	-0.003 (0.004)	-0.004 (0.004)	0.004 (0.011)	-0.005 (0.014)
workplaces	0.001 (0.005)	0.001 (0.005)	-0.084*** (0.026)	-0.083*** (0.021)
residential	0.001 (0.013)	0.016 (0.014)	-0.249*** (0.078)	-0.164** (0.066)
grocery and pharmacy square	0.0002 (0.0001)	0.0003** (0.0001)	-0.001 (0.001)	-0.0003 (0.001)
retail and recreation square	-0.0002 (0.0002)	-0.0004*** (0.0001)	0.001 (0.001)	0.001 (0.001)
parks square	-0.00001*** (0.00000)	-0.00000 (0.00000)	-0.0001*** (0.00002)	-0.00000 (0.00001)
transit stations square	0.0002* (0.0001)	0.00002 (0.0001)	0.001* (0.001)	0.0002 (0.0004)
workplaces square	-0.0001 (0.0001)	-0.00005 (0.0001)	-0.001** (0.0004)	-0.001*** (0.0003)
residential square	0.002***	0.0004	0.017***	0.009***



# Working Paper

	(0.0005)	(0.0005)	(0.003)	(0.002)
day -6	0.734*** (0.148)	0.492*** (0.139)	2.609*** (0.723)	1.316** (0.581)
day -5	0.748*** (0.149)	0.502*** (0.135)	2.461*** (0.705)	1.263** (0.583)
day -4	0.826*** (0.138)	0.551*** (0.128)	2.784*** (0.696)	1.387** (0.553)
day -3	0.900*** (0.145)	0.615*** (0.133)	3.300*** (0.768)	1.847*** (0.627)
day -2	0.798*** (0.134)	0.546*** (0.121)	3.132*** (0.747)	1.813*** (0.628)
day -1	0.883*** (0.148)	0.612*** (0.123)	3.296*** (0.727)	1.945*** (0.627)
t1	1.028*** (0.168)	0.732*** (0.147)	3.635*** (0.762)	2.107*** (0.609)
day 2	0.971*** (0.172)	0.679*** (0.144)	3.557*** (0.699)	2.029*** (0.569)
day 3	0.939*** (0.176)	0.617*** (0.151)	3.736*** (0.798)	2.025*** (0.603)
day 4	0.952*** (0.168)	0.652*** (0.145)	3.511*** (0.826)	1.922*** (0.598)
day 5	0.895*** (0.164)	0.636*** (0.145)	3.116*** (0.685)	1.721*** (0.559)
day 6	0.837*** (0.165)	0.573*** (0.148)	2.932*** (0.704)	1.524*** (0.546)
day 7	0.752*** (0.162)	0.518*** (0.137)	2.723*** (0.721)	1.542*** (0.546)
day 8	0.893*** (0.162)	0.609*** (0.143)	2.984*** (0.738)	1.540*** (0.485)
day 9	0.905*** (0.163)	0.635*** (0.151)	2.912*** (0.679)	1.465*** (0.443)
day 10	0.919*** (0.174)	0.631*** (0.149)	3.035*** (0.767)	1.434*** (0.481)
day 11	0.915*** (0.176)	0.644*** (0.147)	2.963*** (0.834)	1.473*** (0.515)
day 12	0.987***	0.748***	2.632***	1.366***

# Working Paper

	(0.173)	(0.144)	(0.722)	(0.476)
day 13	0.909*** (0.174)	0.657*** (0.138)	2.555*** (0.764)	1.243** (0.490)
day 14	0.825*** (0.185)	0.639*** (0.138)	2.170** (0.853)	1.156** (0.539)
day 15	0.837*** (0.170)	0.593*** (0.125)	2.522*** (0.800)	1.263** (0.508)
day 16	0.854*** (0.185)	0.601*** (0.136)	2.406*** (0.777)	1.137** (0.501)
day 17	0.882*** (0.185)	0.628*** (0.129)	2.466*** (0.839)	1.240** (0.505)
day 18	0.859*** (0.190)	0.642*** (0.153)	2.234*** (0.747)	1.143** (0.465)
day 19	0.711*** (0.177)	0.516*** (0.138)	1.994*** (0.731)	0.972** (0.447)
day 20	0.732*** (0.190)	0.518*** (0.148)	2.073*** (0.756)	0.863* (0.452)
day 21	0.684*** (0.174)	0.527*** (0.133)	1.687** (0.681)	0.723 (0.460)
day 22	0.730*** (0.171)	0.538*** (0.134)	2.170*** (0.757)	0.919** (0.457)
day 23	0.729*** (0.174)	0.533*** (0.137)	1.959*** (0.700)	0.740 (0.444)
day 24	0.651*** (0.183)	0.487*** (0.139)	1.627** (0.744)	0.619 (0.489)
day 25	0.685*** (0.177)	0.488*** (0.136)	2.108** (0.801)	1.009* (0.530)
day 26	0.639*** (0.162)	0.498*** (0.130)	1.772** (0.728)	1.013* (0.533)
day 27	0.638*** (0.161)	0.513*** (0.123)	1.716** (0.684)	1.062** (0.490)
day 28	0.585*** (0.161)	0.483*** (0.123)	1.638** (0.683)	1.172** (0.500)
day 29	0.650*** (0.150)	0.536*** (0.115)	1.995** (0.759)	1.471*** (0.526)
day 30	0.600***	0.490***	1.861***	1.390***

# Working Paper

	(0.141)	(0.109)	(0.688)	(0.519)
day 31	0.634*** (0.147)	0.502*** (0.108)	1.931*** (0.699)	1.302** (0.525)
day 32	0.593*** (0.154)	0.475*** (0.114)	1.764** (0.680)	1.195** (0.506)
day 33	0.489*** (0.139)	0.437*** (0.105)	1.386** (0.557)	1.125** (0.488)
day 34	0.526*** (0.141)	0.468*** (0.105)	1.384** (0.584)	1.178** (0.490)
day 35	0.470*** (0.143)	0.425*** (0.118)	1.230** (0.542)	1.047** (0.492)
day 36	0.456*** (0.144)	0.388*** (0.116)	1.327** (0.577)	1.031** (0.477)
day 37	0.425*** (0.138)	0.411*** (0.113)	1.060* (0.539)	0.996** (0.462)
day 38	0.408*** (0.148)	0.409*** (0.120)	1.104* (0.565)	1.139** (0.455)
day 39	0.428*** (0.149)	0.408*** (0.124)	1.063* (0.572)	1.053** (0.475)
day 40	0.392*** (0.143)	0.406*** (0.127)	0.801* (0.475)	0.957** (0.448)
day 41	0.382*** (0.132)	0.380*** (0.120)	0.841* (0.458)	0.886** (0.436)
day 42	0.330** (0.134)	0.323** (0.126)	0.803* (0.473)	0.752* (0.440)
day 43	0.427** (0.171)	0.415** (0.158)	0.935* (0.489)	0.873** (0.417)
day 44	0.420** (0.170)	0.399** (0.162)	0.815* (0.431)	0.718* (0.371)
day 45	0.313** (0.152)	0.240* (0.139)	0.944** (0.441)	0.573 (0.355)
day 46	0.277* (0.150)	0.236 (0.144)	0.909* (0.461)	0.611 (0.370)
day 47	0.164 (0.137)	0.175 (0.130)	0.622 (0.425)	0.607 (0.363)
day 48	0.158	0.135	0.735*	0.562

# Working Paper

	(0.123)	(0.130)	(0.438)	(0.388)
day 49	0.148 (0.133)	0.113 (0.137)	0.735 (0.457)	0.553 (0.394)
day 50	0.072 (0.107)	0.034 (0.115)	0.870* (0.443)	0.705* (0.392)
Constant	-2.508*** (0.194)	-0.891*** (0.191)	-3.768*** (1.008)	4.988*** (1.252)
Observations	9,813	9,813	9,813	9,813
R <sup>2</sup>	0.322	0.463	0.523	0.698
Adjusted R <sup>2</sup>	0.314	0.456	0.517	0.695
Residual Std. Error	0.826 (df = 9689)	0.735 (df = 9688)	3.376 (df = 9689)	2.684 (df = 9688)

Note:

\*p<0.1; \*\*p<0.05; \*\*\*p<0.01

# Working Paper

Table 8: Event Study regression summary statistics for robustness check (fig. 7) where we control for past outcome values (with a delay of 14 days) and growth rates as a way to minimize confounding due to peoples private behavioral changes to COVID-19 [70].

	<i>Dependent variable:</i>		
	confirmed cases	deaths	hospitalization
	(1)	(2)	(3)
confirmed cases (delayed)	0.471*** (0.030)		
confirmed cases growth rate	-0.0002 (0.0004)		
deaths (delayed)		0.497*** (0.031)	
deaths growth rate		0.0003 (0.0002)	
hospitalization (delayed)			0.548*** (0.030)
hospitalization growth rate			0.126*** (0.042)
new test rate	57.527*** (14.749)	28.759** (10.839)	151.287*** (43.681)
precipitation avg	-0.001 (0.001)	-0.004*** (0.001)	0.005 (0.007)
temperature avg	0.019*** (0.003)	0.005 (0.005)	0.055*** (0.017)
retail and recreation	-8.015*** (1.920)	-2.485 (1.699)	-36.169*** (11.764)
grocery and pharmacy	5.897** (2.401)	0.058 (2.333)	14.051 (14.450)
parks	0.391*** (0.106)	0.249*** (0.079)	1.292*** (0.329)
transit stations	-1.455** (0.578)	-0.349 (0.367)	-4.779** (2.091)
workplaces	1.941** (0.858)	2.657*** (0.751)	12.466*** (3.653)
residential	-51.003*** (7.879)	-36.688*** (8.129)	-295.018*** (52.779)

# Working Paper

grocery and pharmacy sq	-2.808** (1.092)	-0.254 (1.075)	-6.342 (6.400)
retail and recreation sq	3.621*** (1.062)	0.368 (0.940)	16.493** (6.278)
parks sq	-0.084*** (0.021)	-0.035** (0.017)	-0.233*** (0.066)
transit stations sq	1.076*** (0.363)	0.361 (0.233)	3.138** (1.214)
workplaces sq	-1.876*** (0.572)	-2.003*** (0.532)	-11.392*** (2.468)
residential sq	24.116*** (3.443)	18.157*** (3.637)	137.123*** (23.895)
day -6	0.442*** (0.113)	0.576*** (0.124)	1.682** (0.641)
day -5	0.408*** (0.111)	0.576*** (0.124)	1.539** (0.623)
day -4	0.416*** (0.122)	0.601*** (0.113)	1.678*** (0.619)
day -3	0.446*** (0.123)	0.662*** (0.119)	2.154*** (0.702)
day -2	0.441*** (0.117)	0.596*** (0.108)	2.139*** (0.721)
day -1	0.449*** (0.118)	0.630*** (0.120)	2.252*** (0.716)
day 1	0.442*** (0.131)	0.710*** (0.146)	2.243*** (0.774)
day 2	0.437*** (0.135)	0.636*** (0.148)	2.049*** (0.719)
day 3	0.433*** (0.138)	0.528*** (0.155)	1.937** (0.798)
day 4	0.377** (0.143)	0.544*** (0.151)	1.688** (0.804)
day 5	0.349** (0.139)	0.515*** (0.156)	1.373* (0.731)
day 6	0.329** (0.135)	0.449*** (0.150)	1.160 (0.694)

# Working Paper

day 7	0.224 (0.138)	0.292* (0.153)	0.917 (0.733)
day 8	0.301** (0.128)	0.456*** (0.147)	1.063 (0.693)
day 9	0.314** (0.125)	0.481*** (0.144)	0.941 (0.595)
day 10	0.292** (0.117)	0.425** (0.159)	0.841 (0.606)
day 11	0.289** (0.123)	0.428** (0.165)	0.727 (0.638)
day 12	0.222* (0.111)	0.524*** (0.169)	0.395 (0.594)
day 13	0.199* (0.112)	0.394** (0.158)	0.127 (0.616)
day 14	0.112 (0.111)	0.332* (0.165)	-0.103 (0.658)
day 15	0.214** (0.101)	0.297** (0.142)	0.163 (0.571)
day 16	0.230* (0.117)	0.351** (0.148)	0.114 (0.559)
day 17	0.172 (0.118)	0.361** (0.154)	0.144 (0.545)
day 18	0.147 (0.111)	0.335** (0.160)	0.040 (0.429)
day 19	0.170 (0.131)	0.215 (0.152)	-0.025 (0.492)
day 20	0.207* (0.118)	0.300* (0.164)	0.132 (0.448)
day 21	0.124 (0.129)	0.276* (0.159)	-0.271 (0.419)
day 22	0.218* (0.121)	0.302* (0.157)	0.195 (0.457)
day 23	0.230* (0.118)	0.295* (0.153)	0.099 (0.424)
day 24	0.161 (0.110)	0.234 (0.149)	-0.073 (0.443)



# Working Paper

day 25	0.174 (0.107)	0.229 (0.147)	0.283 (0.444)
day 26	0.126 (0.093)	0.161 (0.133)	0.152 (0.420)
day 27	0.073 (0.081)	0.191 (0.128)	0.114 (0.366)
day 28	0.038 (0.084)	0.155 (0.123)	0.169 (0.419)
day 29	0.086 (0.071)	0.287** (0.117)	0.577 (0.431)
day 30	0.070 (0.075)	0.219* (0.111)	0.508 (0.400)
day 31	0.072 (0.082)	0.214** (0.106)	0.435 (0.355)
day 32	0.077 (0.076)	0.221** (0.106)	0.446 (0.343)
day 33	-0.002 (0.083)	0.173* (0.102)	0.261 (0.354)
day 34	-0.027 (0.069)	0.179* (0.098)	0.269 (0.350)
day 35	-0.061 (0.076)	0.116 (0.103)	0.189 (0.371)
day 36	0.013 (0.085)	0.142 (0.093)	0.321 (0.384)
day 37	-0.059 (0.072)	0.137 (0.088)	0.109 (0.360)
day 38	-0.115 (0.072)	0.093 (0.093)	0.110 (0.340)
day 39	-0.098 (0.076)	0.116 (0.096)	0.018 (0.350)
day 40	-0.073 (0.071)	0.124 (0.095)	-0.070 (0.334)
day 41	-0.065 (0.073)	0.091 (0.093)	-0.124 (0.353)
day 42	-0.055 (0.084)	0.045 (0.100)	-0.301 (0.366)

# Working Paper

day 43	0.033 (0.086)	0.209 (0.147)	-0.009 (0.381)
day 44	0.036 (0.088)	0.220 (0.144)	-0.040 (0.375)
day 45	0.081 (0.083)	0.069 (0.116)	0.031 (0.306)
day 46	0.055 (0.086)	0.043 (0.121)	0.014 (0.293)
day 47	0.028 (0.090)	-0.009 (0.111)	-0.084 (0.318)
day 48	0.059 (0.092)	-0.045 (0.093)	-0.017 (0.296)
day 49	0.032 (0.101)	-0.091 (0.120)	-0.049 (0.272)
day 50	0.091 (0.098)	-0.109 (0.077)	0.223 (0.305)
Constant	25.469*** (4.933)	17.781*** (4.880)	164.217*** (32.700)
Observations	9,813	9,813	9,813
R <sup>2</sup>	0.612	0.514	0.693
Adjusted R <sup>2</sup>	0.607	0.507	0.689
Residual Std. Error (df = 9687)	0.626	0.700	2.711

*Note:*

\*p<0.1; \*\*p<0.05; \*\*\*p<0.01

# Working Paper

Table 9: Event Study regression summary statistics of fig. 8 (for earlier states only, i.e. NY, NJ, MA, CT, MI, DC, RI, IL, WA, PA, GA, VT, MD, FL, LA).

	<i>Dependent variable:</i>		
	confirmed cases	deaths	hospitalization
	(1)	(2)	(3)
new test rate	85.967** (31.091)	8.442 (8.333)	231.198** (106.750)
precipitation avg	0.002 (0.002)	0.002 (0.003)	0.012 (0.015)
temperature avg	-0.003 (0.006)	-0.021* (0.012)	-0.102* (0.051)
retail and recreation	-0.005 (0.005)	-0.010 (0.007)	-0.025 (0.041)
grocery and pharmacy	0.004 (0.006)	-0.003 (0.005)	0.061 (0.043)
parks	0.008*** (0.002)	0.004** (0.002)	0.030** (0.013)
transit stations	0.025* (0.012)	-0.009 (0.008)	0.001 (0.052)
workplaces	-0.015 (0.012)	-0.009 (0.008)	-0.106* (0.058)
residential	0.008 (0.028)	-0.012 (0.020)	-0.187 (0.154)
grocery and pharmacy square	-0.0003 (0.0002)	-0.0001 (0.0002)	-0.002 (0.002)
retail and recreation square	0.001*** (0.0002)	0.0002 (0.0002)	0.004** (0.001)
parks square	-0.00002*** (0.00001)	-0.00001* (0.00000)	-0.0001* (0.00004)
transit stations square	0.001** (0.0002)	-0.0001 (0.0001)	0.001 (0.001)
workplaces square	-0.0003 (0.0002)	-0.0001 (0.0001)	-0.001 (0.001)
residential square	0.002** (0.001)	0.001** (0.001)	0.016*** (0.005)
day -6	0.349	0.575*	2.354

# Working Paper

	(0.231)	(0.280)	(1.398)
day -5	0.081 (0.249)	0.474 (0.287)	1.447 (1.528)
day -4	0.569** (0.255)	0.682** (0.252)	3.225** (1.201)
day -3	0.562** (0.248)	0.715** (0.266)	3.722** (1.320)
day -2	0.489** (0.218)	0.609** (0.237)	3.532** (1.305)
day -1	0.561** (0.238)	0.761*** (0.228)	3.950*** (1.085)
day 1	0.433 (0.257)	0.956*** (0.279)	4.561*** (1.139)
day 2	0.455 (0.302)	1.025*** (0.288)	4.664*** (1.111)
day 3	0.630** (0.255)	1.099*** (0.250)	5.367*** (1.083)
day 4	0.618* (0.298)	1.119*** (0.259)	5.156*** (1.246)
day 5	0.427 (0.309)	1.133*** (0.240)	4.249*** (1.205)
day 6	0.450 (0.295)	1.113*** (0.242)	4.251*** (1.271)
day 7	0.551 (0.324)	1.080*** (0.247)	4.582*** (1.410)
day 8	0.641* (0.328)	1.157*** (0.236)	4.781*** (1.483)
day 9	0.518 (0.353)	1.040*** (0.228)	4.251** (1.459)
day 10	0.711** (0.314)	1.127*** (0.244)	4.894*** (1.528)
day 11	0.733** (0.299)	1.085*** (0.270)	5.016*** (1.659)
day 12	0.578* (0.291)	1.272*** (0.307)	4.166** (1.540)
day 13	0.592*	1.174***	4.032**

# Working Paper

	(0.281)	(0.297)	(1.519)
day 14	0.571* (0.302)	1.171*** (0.356)	4.186** (1.809)
day 15	0.556* (0.313)	1.160*** (0.340)	4.206** (1.795)
day 16	0.613* (0.316)	1.208*** (0.347)	4.085** (1.795)
day 17	0.808** (0.305)	1.276*** (0.301)	4.689** (1.720)
day 18	0.673** (0.290)	1.151*** (0.325)	3.847** (1.575)
day 19	0.589 (0.335)	0.859** (0.319)	3.119* (1.645)
day 20	0.625* (0.328)	0.978** (0.331)	3.372* (1.701)
day 21	0.597* (0.304)	1.006*** (0.314)	2.908* (1.488)
day 22	0.647* (0.318)	0.973*** (0.319)	3.388* (1.738)
day 23	0.528 (0.310)	0.914** (0.319)	2.900 (1.690)
day 24	0.564* (0.310)	0.836** (0.316)	2.905 (1.726)
day 25	0.579* (0.310)	0.873** (0.306)	3.569* (1.795)
day 26	0.433 (0.248)	0.824** (0.280)	3.071* (1.608)
day 27	0.345 (0.240)	0.781** (0.289)	2.914* (1.457)
day 28	0.262 (0.273)	0.708** (0.301)	2.918* (1.520)
day 29	0.329 (0.242)	0.763** (0.276)	3.494* (1.659)
day 30	0.272 (0.227)	0.720** (0.262)	3.348* (1.569)
day 31	0.397	0.766***	3.592**

# Working Paper

	(0.229)	(0.255)	(1.509)
day 32	0.371 (0.231)	0.716** (0.245)	3.359** (1.411)
day 33	0.225 (0.244)	0.636** (0.232)	2.492* (1.198)
day 34	0.240 (0.233)	0.727*** (0.236)	2.449* (1.244)
day 35	0.211 (0.223)	0.636** (0.231)	2.011 (1.166)
day 36	0.252 (0.232)	0.638*** (0.212)	2.069 (1.213)
day 37	0.159 (0.217)	0.481* (0.225)	1.458 (1.176)
day 38	0.117 (0.212)	0.472* (0.228)	2.137* (1.188)
day 39	0.226 (0.187)	0.615** (0.210)	2.363** (1.062)
day 40	0.124 (0.165)	0.585** (0.206)	1.862* (1.020)
day 41	0.061 (0.192)	0.523** (0.197)	1.533 (1.003)
day 42	0.069 (0.198)	0.443** (0.206)	1.324 (0.975)
day 43	0.039 (0.205)	0.639* (0.334)	1.382 (1.080)
day 44	0.074 (0.198)	0.642* (0.326)	1.160 (0.999)
day 45	0.209 (0.205)	0.669** (0.292)	1.611* (0.815)
day 46	0.160 (0.211)	0.620** (0.272)	1.658* (0.806)
day 47	0.055 (0.217)	0.522* (0.252)	1.390 (0.806)
day 48	0.030 (0.187)	0.473* (0.232)	1.358 (0.874)
day 49	-0.042	0.508*	1.181

# Working Paper

	(0.218)	(0.265)	(0.857)
day 50	0.005 (0.195)	0.327* (0.155)	1.327 (0.898)
Constant	-2.996*** (0.352)	-1.603*** (0.385)	-5.029*** (1.075)
<hr/>			
Observations	3,027	3,027	3,027
R <sup>2</sup>	0.463	0.471	0.622
Adjusted R <sup>2</sup>	0.447	0.456	0.611
Residual Std. Error (df = 2939)	0.742	0.736	3.943

*Note:*

\*p<0.1; \*\*p<0.05; \*\*\*p<0.01



# Working Paper

Table 10: Event Study regression summary statistics of fig. 8 (for later states only, i.e. all states except NY, NJ, MA, CT, MI, DC, RI, IL, WA, PA, GA, VT, MD, FL, LA).

	<i>Dependent variable:</i>		
	confirmed cases	deaths	hospitalization
	(1)	(2)	(3)
new test rate	80.041*** (25.677)	29.200 (18.794)	194.994*** (71.512)
precipitation avg	-0.004** (0.001)	-0.005** (0.002)	-0.006 (0.007)
temperature avg	0.015** (0.006)	0.001 (0.008)	0.060*** (0.020)
retail and recreation	-0.005 (0.005)	-0.021*** (0.004)	-0.053** (0.022)
grocery and pharmacy	-0.009* (0.005)	-0.015*** (0.006)	-0.064** (0.024)
parks	0.003* (0.001)	0.003** (0.001)	0.009*** (0.003)
transit stations	0.001 (0.006)	-0.003 (0.005)	0.007 (0.012)
workplaces	0.004 (0.005)	0.004 (0.006)	-0.066** (0.028)
residential	0.002 (0.018)	0.025 (0.019)	-0.073 (0.097)
grocery and pharmacy square	-0.00005 (0.0001)	0.001*** (0.0001)	0.001 (0.001)
retail and recreation square	-0.0002 (0.0002)	-0.001*** (0.0001)	-0.001* (0.001)
parks square	-0.00001*** (0.00000)	-0.00001* (0.00000)	-0.00002** (0.00001)
transit stations square	0.0002 (0.0001)	0.0001 (0.0001)	0.0005 (0.0005)
workplaces square	0.00004 (0.0001)	-0.00004 (0.0001)	-0.001** (0.0003)
residential square	0.001 (0.001)	0.001 (0.001)	0.007* (0.004)
day -6	0.337**	0.696***	2.034**

# Working Paper

	(0.135)	(0.160)	(0.811)
day -5	0.371*** (0.136)	0.725*** (0.162)	2.073** (0.805)
day -4	0.309** (0.122)	0.717*** (0.167)	1.823** (0.784)
day -3	0.335** (0.141)	0.812*** (0.173)	2.247** (0.978)
day -2	0.394** (0.163)	0.804*** (0.168)	2.461** (0.967)
day -1	0.363** (0.151)	0.818*** (0.187)	2.400** (0.924)
day 1	0.439** (0.183)	0.928*** (0.217)	2.432** (0.990)
day 2	0.441** (0.185)	0.826*** (0.224)	2.258** (0.888)
day 3	0.417** (0.196)	0.669*** (0.240)	1.938** (0.892)
day 4	0.357* (0.197)	0.684*** (0.222)	1.761* (0.959)
day 5	0.374** (0.180)	0.665*** (0.223)	1.781** (0.869)
day 6	0.363** (0.171)	0.556** (0.209)	1.390* (0.780)
day 7	0.246 (0.158)	0.440** (0.199)	1.126 (0.755)
day 8	0.264 (0.161)	0.597*** (0.205)	1.296* (0.756)
day 9	0.299* (0.156)	0.693*** (0.220)	1.322* (0.699)
day 10	0.256* (0.151)	0.609*** (0.219)	1.031 (0.670)
day 11	0.199 (0.172)	0.618*** (0.218)	0.846 (0.759)
day 12	0.195 (0.151)	0.695*** (0.214)	0.949 (0.682)
day 13	0.179	0.564***	0.728

# Working Paper

	(0.155)	(0.201)	(0.646)
day 14	0.077 (0.167)	0.475** (0.193)	0.284 (0.651)
day 15	0.169 (0.168)	0.488** (0.184)	0.690 (0.662)
day 16	0.172 (0.184)	0.479** (0.207)	0.580 (0.671)
day 17	0.068 (0.173)	0.449** (0.202)	0.440 (0.689)
day 18	0.040 (0.182)	0.496** (0.225)	0.378 (0.661)
day 19	0.065 (0.193)	0.456** (0.209)	0.460 (0.660)
day 20	0.132 (0.190)	0.443* (0.225)	0.335 (0.573)
day 21	0.040 (0.199)	0.377* (0.205)	0.091 (0.556)
day 22	0.099 (0.191)	0.460** (0.210)	0.401 (0.564)
day 23	0.183 (0.203)	0.533** (0.228)	0.598 (0.627)
day 24	0.079 (0.169)	0.409* (0.218)	0.035 (0.586)
day 25	0.057 (0.184)	0.382* (0.215)	0.203 (0.704)
day 26	0.011 (0.175)	0.385* (0.207)	0.205 (0.708)
day 27	-0.039 (0.157)	0.379* (0.198)	0.082 (0.618)
day 28	-0.023 (0.150)	0.370* (0.188)	0.194 (0.703)
day 29	-0.048 (0.138)	0.444** (0.180)	0.471 (0.693)
day 30	-0.015 (0.151)	0.416** (0.169)	0.525 (0.641)
day 31	-0.023	0.397**	0.351

# Working Paper

	(0.150)	(0.165)	(0.596)
day 32	-0.025 (0.150)	0.382** (0.183)	0.294 (0.617)
day 33	-0.067 (0.146)	0.347* (0.172)	0.418 (0.581)
day 34	-0.130 (0.136)	0.295* (0.167)	0.294 (0.567)
day 35	-0.142 (0.134)	0.263 (0.179)	0.215 (0.583)
day 36	-0.093 (0.139)	0.238 (0.183)	0.332 (0.568)
day 37	-0.181 (0.128)	0.287 (0.180)	0.226 (0.546)
day 38	-0.204 (0.122)	0.272 (0.190)	0.127 (0.508)
day 39	-0.235* (0.118)	0.195 (0.189)	-0.046 (0.533)
day 40	-0.214* (0.110)	0.222 (0.187)	0.076 (0.489)
day 41	-0.177 (0.111)	0.220 (0.173)	0.035 (0.442)
day 42	-0.180 (0.117)	0.148 (0.174)	-0.186 (0.482)
day 43	-0.131 (0.115)	0.213 (0.194)	0.138 (0.482)
day 44	-0.133 (0.122)	0.191 (0.197)	0.078 (0.416)
day 45	-0.062 (0.126)	-0.031 (0.160)	-0.094 (0.430)
day 46	-0.095 (0.129)	-0.041 (0.179)	-0.217 (0.455)
day 47	-0.125 (0.124)	-0.089 (0.152)	-0.104 (0.452)
day 48	-0.077 (0.140)	-0.097 (0.148)	-0.123 (0.416)
day 49	-0.074	-0.192	-0.234

# Working Paper

	(0.139)	(0.137)	(0.454)
day 50	-0.056 (0.132)	-0.178 (0.130)	0.070 (0.486)
Constant	-2.909*** (0.173)	-2.465*** (0.183)	-1.389 (0.910)
Observations	6,786	6,786	6,786
R <sup>2</sup>	0.551	0.340	0.491
Adjusted R <sup>2</sup>	0.543	0.329	0.483
Residual Std. Error (df = 6677)	0.675	0.816	2.709

*Note:*

\*p<0.1; \*\*p<0.05; \*\*\*p<0.01

# Working Paper

## D Robustness Check: Test Rate

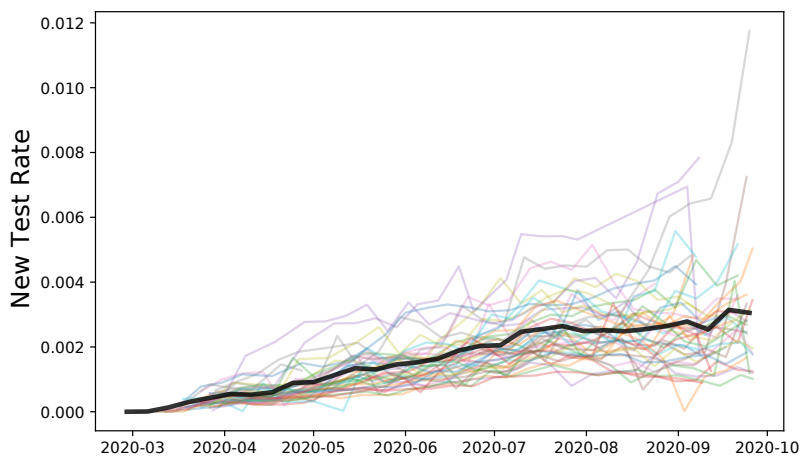


Figure 9: Per state (each state a different color) and average (over all states, thicker black line) testing rate increased during our period of investigation.

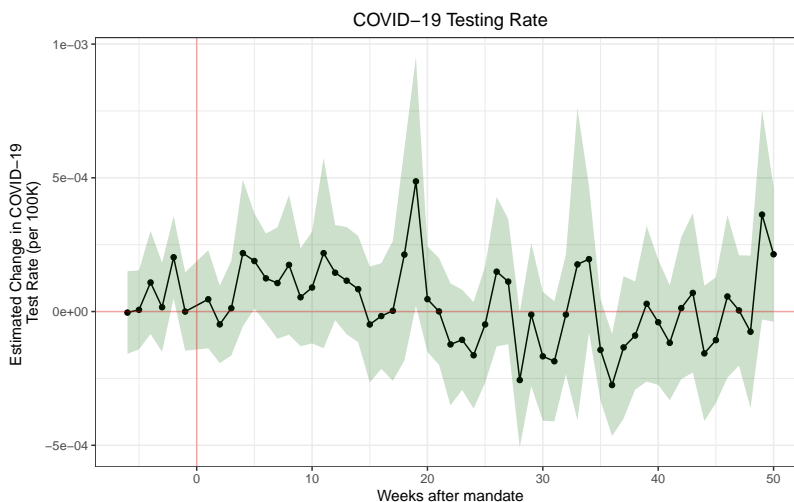


Figure 10: Event study of testing rate over all states controlling for a number of factors showing that mask mandates are not associated with changes in testing rate during our period of investigation. This suggests that testing rate decreases are not behind the decrease in COVID-19 outcomes we observe after the introduction of mask mandates. Full regression results are shown in table 11.

# Working Paper

Table 11: Event Study regression summary statistics of testing rate event study shown in fig. 10.

	<i>Dependent variable:</i>
	Daily Test Rate
precipitation	0.00000 (0.00000)
temperature	0.00001 (0.00001)
retail and recreation	-0.00000 (0.00001)
grocery and pharmacy	0.00001** (0.00000)
parks	0.00000 (0.00000)
transit stations	0.00001*** (0.00000)
workplaces	0.00000 (0.00001)
residential	0.00005* (0.00003)
grocery and pharmacy square	-0.00000 (0.00000)
retail and recreation square	0.00000 (0.00000)
parks square	-0.000*** (0.000)
transit stations square	-0.00000 (0.00000)
workplaces square	-0.00000 (0.00000)
residential square	-0.00000 (0.00000)
day -6	-0.0001 (0.0001)
day -5	-0.0001 (0.0001)

# Working Paper

day -4	0.0001 (0.0001)
day -3	-0.00004 (0.0001)
day -2	0.0001* (0.0001)
day -1	-0.0001 (0.0001)
day 1	-0.00001 (0.0001)
day 2	-0.0001 (0.0001)
day 3	-0.00004 (0.0001)
day 4	0.0002 (0.0001)
day 5	0.0001 (0.0001)
day 6	0.0001 (0.0001)
day 7	0.00005 (0.0001)
day 8	0.0001 (0.0001)
day 9	-0.00000 (0.0001)
day 10	0.00003 (0.0001)
day 11	0.0002 (0.0002)
day 12	0.0001 (0.0001)
day 13	0.0001 (0.0001)
day 14	0.00003 (0.0001)



# Working Paper

day 15	-0.0001 (0.0001)
day 16	-0.0001 (0.0001)
day 17	-0.0001 (0.0001)
day 18	0.0002 (0.0002)
day 19	0.0004* (0.0002)
day 20	-0.00001 (0.0001)
day 21	-0.0001 (0.0001)
day 22	-0.0002 (0.0001)
day 23	-0.0002* (0.0001)
day 24	-0.0002** (0.0001)
day 25	-0.0001 (0.0001)
day 26	0.0001 (0.0001)
day 27	0.0001 (0.0001)
day 28	-0.0003** (0.0001)
day 29	-0.0001 (0.0001)
day 30	-0.0002* (0.0001)
day 31	-0.0002** (0.0001)
day 32	-0.0001 (0.0001)

# Working Paper

day 33	0.0001 (0.0003)
day 34	0.0001 (0.0001)
day 35	-0.0002** (0.0001)
day 36	-0.0003*** (0.0001)
day 37	-0.0002 (0.0001)
day 38	-0.0001 (0.0001)
day 39	-0.00003 (0.0001)
day 40	-0.0001 (0.0001)
day 41	-0.0002 (0.0001)
day 42	-0.00004 (0.0001)
day 43	0.00001 (0.0002)
day 44	-0.0002 (0.0001)
day 45	-0.0002 (0.0001)
day 46	-0.00000 (0.0002)
day 47	-0.0001 (0.0001)
day 48	-0.0001 (0.0001)
day 49	0.0003 (0.0002)
day 50	0.0002 (0.0001)

# Working Paper

Constant	-0.002*** (0.0002)
----------	-----------------------

---

Observations	9,813
R <sup>2</sup>	0.493
Adjusted R <sup>2</sup>	0.486
Residual Std. Error	0.001 (df = 9690)

---

*Note:* \*p<0.1; \*\*p<0.05; \*\*\*p<0.01

# Working Paper

## E Mask Adherence following mask enforcement

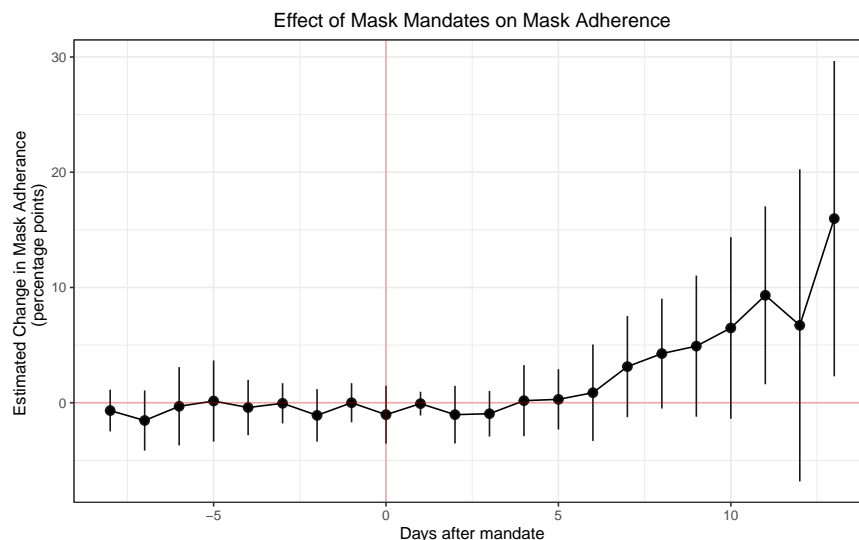


Figure 11: Event study of mask adherence when not controlling for cases, deaths and testing rate. As expected, the treatment effect becomes noisier but remains consistent to when controlling for cases, deaths and testing rate. Full regression results are shown in table 12.

Table 12: Event Study regression summary statistics for robustness check comparing controlling for cases, deaths and testing rate (fig. 11).

	<i>Dependent variable:</i>	
	Mask Adherence	Mask Adherence
	(all controls)	(no cases, deaths and tests)
deaths	7.552 (3.519)	
confirmed cases	0.113 (0.073)	
new test rate	-25.681 (14.831)	
grocery and pharmacy	0.160 (0.074)	0.184 (0.096)
parks	0.005 (0.009)	0.012 (0.017)
transit stations	-0.014 (0.030)	-0.028 (0.055)
workplaces	0.024 (0.121)	0.129 (0.155)

# Working Paper

residential	0.603 (0.388)	1.522* (0.587)
grocery and pharmacy square	-0.001 (0.002)	-0.002 (0.002)
retail and recreation square	0.003** (0.001)	0.004** (0.001)
parks square	0.0001 (0.00004)	0.0002* (0.0001)
transit stations square	0.002 (0.001)	0.003* (0.001)
workplaces square	-0.003 (0.003)	-0.001 (0.004)
residential square	-0.010 (0.022)	-0.050 (0.039)
day -8	-2.754 (2.695)	0.075 (0.923)
day -7	-4.122 (3.912)	-0.786 (1.331)
day -6	-3.599 (3.670)	0.447 (1.733)
day -5	-3.251 (4.414)	0.905 (1.795)
day -4	-3.774 (4.184)	0.340 (1.224)
day -3	-3.953 (3.944)	0.706 (0.890)
day -2	-3.885 (3.836)	-0.341 (1.161)
day -1	-2.264 (2.695)	0.756 (0.866)
day 0	-3.137 (3.065)	-0.280 (1.281)
day 1	-2.550 (2.372)	0.678 (0.527)
day 2	-3.244 (2.511)	-0.279 (1.276)

# Working Paper

day 3	-2.915 (2.247)	-0.197 (1.010)
day 4	-2.293 (2.602)	0.936 (1.573)
day 5	-1.656 (1.836)	1.048 (1.336)
day 6	-1.150 (2.238)	1.626 (2.135)
day 7	1.319 (1.827)	3.889 (2.240)
day 8	2.357 (1.220)	5.019 (2.431)
day 9	3.295 (1.560)	5.668 (3.124)
day 10	5.259* (1.716)	7.243 (4.020)
day 11	8.908** (2.656)	10.077* (3.937)
day 12	9.934 (4.691)	7.471 (6.907)
day 13	21.114** (5.825)	16.732* (6.980)
Constant	70.346*** (6.894)	62.648*** (8.436)

---

Observations	323	323
R <sup>2</sup>	0.934	0.903
Adjusted R <sup>2</sup>	0.925	0.890
Residual Std. Error	2.538 (df = 281)	3.070 (df = 284)

---

*Note:*

\*p<0.1; \*\*p<0.05; \*\*\*p<0.01

# Working Paper

## F Daily Mask Adherence and COVID-19 Outcomes

Table 13: Regression summary statistics of mask adherence on confirmed new cases (1) and deaths (2)

	<i>Dependent variable:</i>	
	confirmed cases	deaths
	(1)	(2)
compliance	-1.675*** (0.064)	-0.017*** (0.001)
new test rate	1,528.504*** (108.597)	14.615*** (1.225)
precipitation	-0.419*** (0.056)	-0.003*** (0.001)
temperature	-1.060*** (0.058)	-0.004*** (0.001)
grocery and pharmacy	0.453*** (0.066)	0.002*** (0.001)
parks	-0.170*** (0.016)	-0.002*** (0.0002)
transit stations	-0.237*** (0.043)	-0.005*** (0.0005)
workplaces	2.261*** (0.158)	0.015*** (0.002)
residential	5.755*** (0.420)	0.021*** (0.005)
grocery and pharmacy square	0.008*** (0.002)	0.0002*** (0.00003)
retail and recreation square	0.0002 (0.001)	-0.00002 (0.00002)
parks square	0.0004*** (0.0001)	0.0000*** (0.00000)
transit stations square	-0.013*** (0.001)	-0.0002*** (0.00001)
workplaces square	0.017*** (0.003)	0.0001*** (0.00003)
residential square	-0.012 (0.025)	0.001*** (0.0003)
Constant	191.442*** (5.384)	1.874*** (0.061)
Observations	3,841	3,841
R <sup>2</sup>	0.502	0.343
<i>Note:</i>	*p<0.1; **p<0.05; ***p<0.01	

# Working Paper

## G International Community Mask Adherence and Attitudes

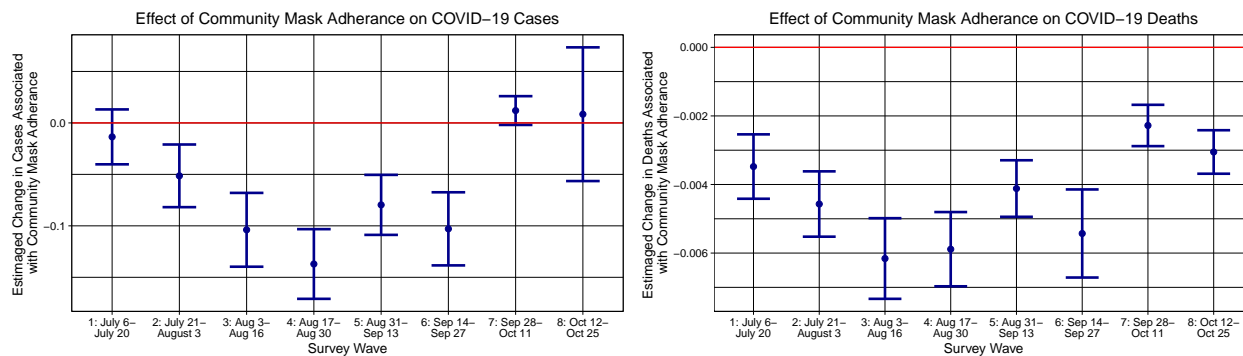


Figure 12: Disaggregated (by wave) survey estimates of the effect of community mask adherence on COVID-19 cases and deaths in a 68-country survey with 479K responses. Error bars show a 95% confidence interval. Full regression statistics are shown in tables 15 and 17.

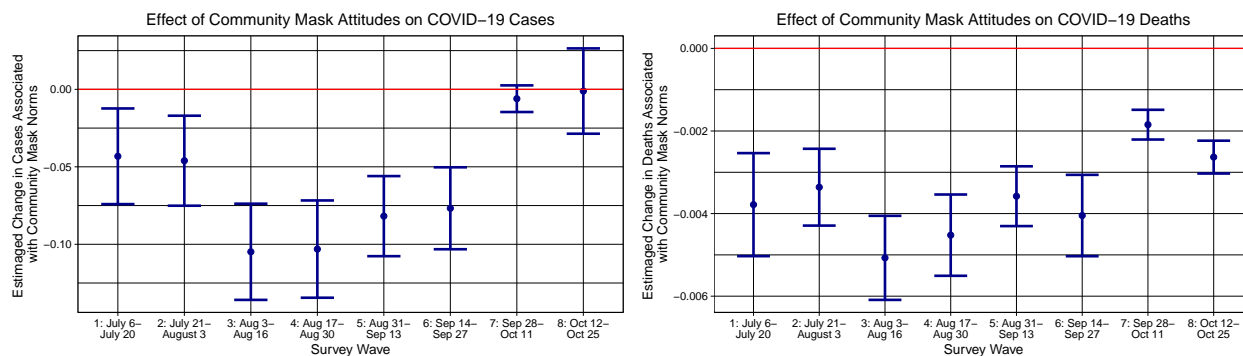


Figure 13: Disaggregated (by wave) survey estimates of the effect of community mask norms on COVID-19 cases and deaths in a 68-country survey with 479K responses. Error bars show a 95% confidence interval. Full regression statistics are shown in tables 16 and 18.

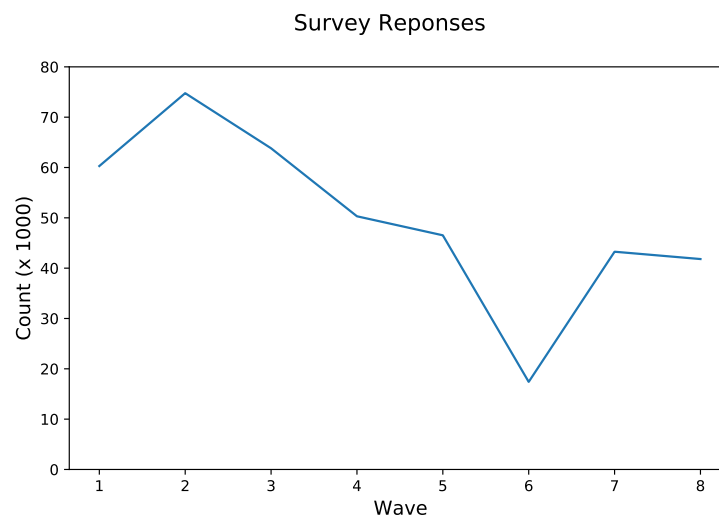


Figure 14: Number of responses per wave of survey.



# Working Paper

## Weighted Average of Community Mask Adherence

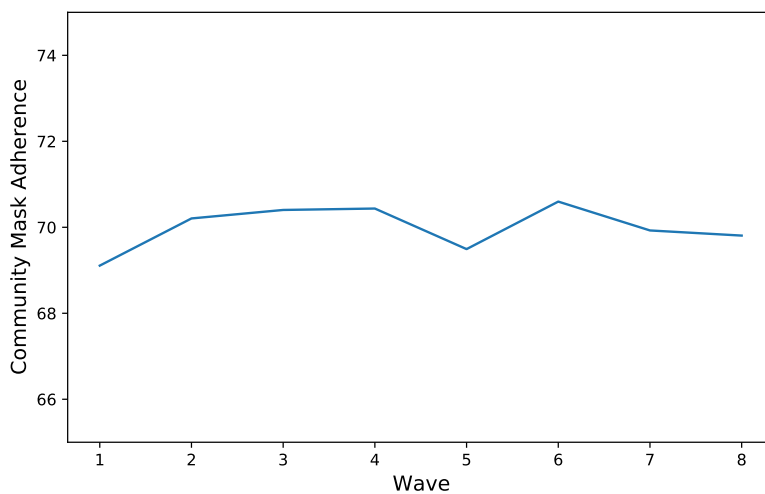


Figure 15: Average (weighted) community mask adherence response per wave.

## Weighted Average of Community Mask Attitudes

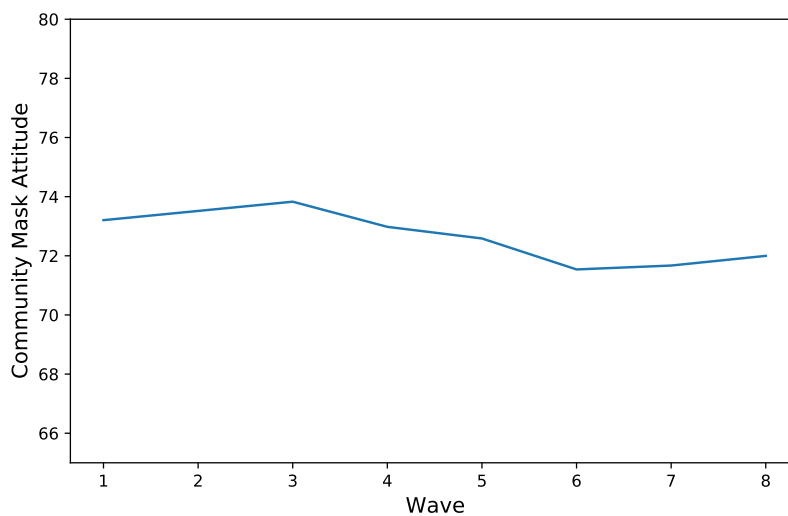


Figure 16: Average (weighted) community mask attitude response per wave.

# Working Paper

Table 14: Multi-linear survey regression statistics of community mask adherence and community mask attitudes on COVID-19 Deaths and Cases in 68 countries over all waves.

	<i>Dependent variable (per 100K):</i>			
	Cases	Deaths	Cases	Deaths
	(1)	(2)	(3)	(4)
Community Mask Attitudes	-0.530*** (0.055)	-0.035*** (0.002)		
Community Mask Adherence			-0.497*** (0.106)	-0.042*** (0.002)
population density	-0.577*** (0.009)	-0.021*** (0.0003)	-0.574*** (0.013)	-0.021*** (0.0004)
human development index	309.005*** (16.045)	34.078*** (0.427)	238.798*** (24.962)	33.000*** (0.618)
new tests smoothed per thousand	453.869*** (3.267)	1.206*** (0.050)	460.777*** (6.254)	1.256*** (0.073)
retail and recreation	-4.134*** (0.178)	-0.154*** (0.005)	-4.653*** (0.259)	-0.162*** (0.008)
grocery and pharmacy	3.294*** (0.148)	0.033*** (0.004)	2.966*** (0.212)	0.033*** (0.006)
transit stations	-2.170*** (0.129)	0.004 (0.004)	-1.877*** (0.202)	0.007 (0.005)
workplaces	13.075*** (0.203)	0.186*** (0.005)	12.518*** (0.315)	0.170*** (0.007)
residential	32.767*** (0.491)	0.862*** (0.012)	30.551*** (0.754)	0.814*** (0.017)
Constant	-65.551*** (12.087)	-14.552*** (0.309)	-18.362 (19.673)	-13.298*** (0.437)
Observations	216,663	216,663	97,802	97,802

Note:

\*p<0.1; \*\*p<0.05; \*\*\*p<0.01

# Working Paper

Table 15: Multi-linear survey regression statistics of community mask adherence on COVID-19 Cases in 68 countries per wave.

	<i>Dependent variable:</i>							
	new cases							
	(1)	(2)	(3)	(4)	(5)	(6)	(7)	(8)
Community Mask Adherence	-0.014 (0.014)	-0.051*** (0.016)	-0.104*** (0.018)	-0.137*** (0.017)	-0.080*** (0.015)	-0.103*** (0.018)	0.012* (0.007)	0.008 (0.033)
population density	-0.053*** (0.003)	-0.056*** (0.003)	-0.057*** (0.003)	-0.091*** (0.004)	-0.067*** (0.003)	-0.071*** (0.005)	-0.033*** (0.001)	-0.017*** (0.001)
human development index	67.153*** (4.875)	13.143*** (3.502)	47.721*** (4.136)	75.832*** (4.204)	160.982*** (5.244)	198.787*** (8.666)	-4.387 (3.002)	-1.285 (4.790)
new tests smoothed per thousand	63.066*** (0.654)	66.997*** (0.426)	53.548*** (0.504)	40.492*** (0.529)	14.530*** (0.677)	24.274*** (0.719)	39.538*** (0.316)	59.118*** (1.353)
retail and recreation	0.545*** (0.035)	0.234*** (0.029)	0.064* (0.034)	-0.394*** (0.059)	-2.577*** (0.057)	-1.464*** (0.096)	-1.403*** (0.040)	-1.913*** (0.129)
grocery and pharmacy	0.217*** (0.026)	0.323*** (0.031)	0.818*** (0.038)	1.447*** (0.059)	3.237*** (0.076)	1.188*** (0.108)	0.212*** (0.036)	-0.347*** (0.038)
transit stations	-0.647*** (0.035)	-1.124*** (0.034)	-0.409*** (0.025)	-0.567*** (0.035)	0.312*** (0.036)	0.499*** (0.079)	0.730*** (0.042)	1.050*** (0.050)
workplaces	2.289*** (0.060)	1.316*** (0.052)	1.759*** (0.052)	1.874*** (0.048)	-0.471*** (0.063)	2.200*** (0.061)	0.326*** (0.037)	0.175*** (0.052)
residential	6.463*** (0.182)	3.157*** (0.146)	6.427*** (0.172)	7.122*** (0.157)	2.467*** (0.198)	5.959*** (0.213)	1.120*** (0.048)	-0.205 (0.263)
Constant	-55.461*** (3.459)	-8.636*** (2.518)	-24.440*** (3.259)	-46.732*** (3.060)	-122.869*** (3.754)	-122.170*** (6.643)	8.818*** (2.351)	0.589 (4.311)
Observations	25,666	31,614	28,066	22,971	21,006	7,802	18,554	17,658

Note:

\*p<0.1; \*\*p<0.05; \*\*\*p<0.01

Table 16: Multi-linear survey regression statistics of community mask attitudes on COVID-19 Cases in 68 countries per wave.

	<i>Dependent variable:</i>							
	new cases							
	(1)	(2)	(3)	(4)	(5)	(6)	(7)	(8)
Community Mask Attitudes	-0.043*** (0.016)	-0.046*** (0.015)	-0.105*** (0.016)	-0.103*** (0.016)	-0.082*** (0.013)	-0.077*** (0.013)	-0.006 (0.004)	-0.001 (0.014)
population density	-0.048*** (0.002)	-0.058*** (0.003)	-0.055*** (0.003)	-0.087*** (0.004)	-0.068*** (0.003)	-0.070*** (0.003)	-0.031*** (0.001)	-0.016*** (0.001)
human development index	70.177*** (4.932)	15.275*** (3.486)	46.990*** (4.171)	68.568*** (4.407)	170.880*** (5.192)	200.450*** (5.549)	-1.349 (1.852)	0.290 (3.125)
new tests smoothed per thousand	62.866*** (0.662)	66.708*** (0.440)	53.623*** (0.487)	39.920*** (0.578)	13.285*** (0.705)	23.600*** (0.473)	39.678*** (0.211)	58.457*** (0.709)
retail and recreation	0.498*** (0.036)	0.250*** (0.031)	0.069* (0.036)	-0.401*** (0.061)	-2.588*** (0.058)	-1.487*** (0.060)	-1.375*** (0.026)	-1.755*** (0.072)
grocery and pharmacy	0.196*** (0.027)	0.298*** (0.032)	0.812*** (0.038)	1.470*** (0.067)	3.328*** (0.073)	1.202*** (0.065)	0.266*** (0.025)	-0.363*** (0.022)
transit stations	-0.668*** (0.034)	-1.152*** (0.035)	-0.375*** (0.026)	-0.604*** (0.035)	0.331*** (0.036)	0.513*** (0.045)	0.677*** (0.028)	0.970*** (0.032)
workplaces	2.263*** (0.060)	1.405*** (0.054)	1.712*** (0.053)	1.793*** (0.051)	-0.378*** (0.065)	2.124*** (0.037)	0.308*** (0.025)	0.150*** (0.034)
residential	6.326*** (0.182)	3.258*** (0.148)	6.429*** (0.173)	6.968*** (0.166)	2.763*** (0.200)	5.847*** (0.125)	1.082*** (0.032)	-0.084 (0.147)
Constant	-57.361*** (3.533)	-8.805*** (2.670)	-24.143*** (3.361)	-44.760*** (3.215)	-128.983*** (3.847)	-125.463*** (4.293)	6.501*** (1.508)	0.781 (2.592)
Observations	25,359	31,058	27,689	22,663	20,804	15,721	37,708	35,650

Note:

\*p<0.1; \*\*p<0.05; \*\*\*p<0.01

# Working Paper

Table 17: Multi-linear survey regression statistics of community mask adherence on COVID-19 cases in 68 countries per wave.

	<i>Dependent variable:</i>							
	new deaths							
	(1)	(2)	(3)	(4)	(5)	(6)	(7)	(8)
Community Mask Adherence	-0.003*** (0.0005)	-0.005*** (0.0005)	-0.006*** (0.001)	-0.006*** (0.001)	-0.004*** (0.0004)	-0.005*** (0.001)	-0.002*** (0.0003)	-0.003*** (0.0003)
population density	-0.002*** (0.0001)	-0.002*** (0.0001)	-0.003*** (0.0001)	-0.003*** (0.0001)	-0.002*** (0.0001)	-0.002*** (0.0002)	-0.002*** (0.0001)	-0.001*** (0.0001)
human development index	4.854*** (0.141)	3.953*** (0.116)	4.324*** (0.131)	4.407*** (0.144)	5.486*** (0.156)	6.819*** (0.318)	2.659*** (0.101)	4.644*** (0.157)
new tests smoothed per thousand	0.173*** (0.024)	0.527*** (0.016)	0.473*** (0.020)	0.318*** (0.020)	-0.310*** (0.018)	-0.164*** (0.031)	0.075*** (0.012)	-0.066*** (0.017)
retail and recreation	-0.003** (0.001)	-0.001 (0.001)	-0.010*** (0.001)	-0.017*** (0.002)	-0.052*** (0.001)	-0.042*** (0.003)	-0.043*** (0.001)	-0.086*** (0.002)
grocery and pharmacy	-0.006*** (0.001)	-0.004*** (0.001)	0.004*** (0.001)	0.023*** (0.002)	0.043*** (0.002)	0.020*** (0.003)	0.005*** (0.001)	0.004*** (0.001)
transit stations	-0.007*** (0.001)	-0.020*** (0.001)	-0.007*** (0.001)	-0.015*** (0.001)	0.004*** (0.001)	0.014*** (0.002)	0.027*** (0.001)	0.060*** (0.002)
workplaces	0.040*** (0.002)	0.029*** (0.001)	0.032*** (0.001)	0.034*** (0.001)	-0.016*** (0.001)	0.023*** (0.002)	0.002* (0.001)	-0.021*** (0.002)
residential	0.142*** (0.005)	0.099*** (0.004)	0.140*** (0.005)	0.155*** (0.004)	0.052*** (0.004)	0.121*** (0.006)	0.038*** (0.002)	0.015*** (0.003)
Constant	-2.919*** (0.100)	-2.121*** (0.080)	-2.144*** (0.091)	-2.526*** (0.103)	-3.428*** (0.110)	-3.845*** (0.231)	-1.123*** (0.075)	-2.618*** (0.112)
Observations	25,666	31,614	28,066	22,971	21,006	7,802	18,554	17,658

Note:

\*p<0.1; \*\*p<0.05; \*\*\*p<0.01

Table 18: Multi-linear survey regression statistics of community mask attitudes on COVID-19 deaths in 68 countries per wave.

	<i>Dependent variable:</i>							
	new deaths							
	(1)	(2)	(3)	(4)	(5)	(6)	(7)	(8)
Community Mask Attitudes	-0.004*** (0.001)	-0.003*** (0.0005)	-0.005*** (0.001)	-0.005*** (0.001)	-0.004*** (0.0004)	-0.004*** (0.001)	-0.002*** (0.0002)	-0.003*** (0.0002)
population density	-0.002*** (0.0001)	-0.002*** (0.0001)	-0.002*** (0.0001)	-0.003*** (0.0001)	-0.002*** (0.0001)	-0.002*** (0.0001)	-0.002*** (0.0004)	-0.001*** (0.00003)
human development index	5.058*** (0.144)	3.885*** (0.116)	4.076*** (0.126)	4.168*** (0.154)	5.635*** (0.150)	6.819*** (0.203)	2.655*** (0.063)	4.494*** (0.098)
new tests smoothed per thousand	0.146*** (0.026)	0.524*** (0.016)	0.504*** (0.019)	0.293*** (0.021)	-0.351*** (0.018)	-0.188*** (0.019)	0.082*** (0.008)	-0.071*** (0.011)
retail and recreation	-0.006*** (0.001)	0.001 (0.001)	-0.010*** (0.001)	-0.016*** (0.002)	-0.053*** (0.001)	-0.045*** (0.002)	-0.042*** (0.001)	-0.086*** (0.001)
grocery and pharmacy	-0.008*** (0.001)	-0.005*** (0.001)	0.005*** (0.001)	0.024*** (0.002)	0.045*** (0.002)	0.019*** (0.002)	0.006*** (0.001)	0.004*** (0.001)
transit stations	-0.007*** (0.001)	-0.019*** (0.001)	-0.006*** (0.001)	-0.017*** (0.001)	0.005*** (0.001)	0.017*** (0.001)	0.026*** (0.001)	0.060*** (0.001)
workplaces	0.037*** (0.002)	0.031*** (0.001)	0.032*** (0.001)	0.032*** (0.001)	-0.015*** (0.001)	0.021*** (0.001)	0.003*** (0.001)	-0.023*** (0.001)
residential	0.136*** (0.005)	0.107*** (0.004)	0.135*** (0.005)	0.152*** (0.005)	0.056*** (0.004)	0.118*** (0.004)	0.039*** (0.002)	0.013*** (0.002)
Constant	-3.078*** (0.102)	-2.121*** (0.084)	-2.033*** (0.091)	-2.450*** (0.111)	-3.553*** (0.111)	-3.922*** (0.148)	-1.167*** (0.048)	-2.539*** (0.070)
Observations	25,359	31,058	27,689	22,663	20,804	15,721	37,708	35,650

Note:

\*p<0.1; \*\*p<0.05; \*\*\*p<0.01