

1 **Diagnosing pulmonary tuberculosis using sequence-specific purification of urine cell-free DNA**

2 Amy Oreskovic,^a Nuttada Panpradist,^a Diana Marangu,^b M. William Ngwane,^c Zanele P.

3 Magcaba,^c Sindiswa Ngcobo,^c Zinhle Ngcobo,^c David J. Horne,^{d,e} Douglas P.K. Wilson,^{c,f} Adrienne

4 E. Shapiro,^{d,e} Paul K. Drain,^{d,e}# Barry R. Lutz^a#

5

6 ^aDepartment of Bioengineering, University of Washington, Seattle, WA, USA

7 ^bDepartment of Paediatrics and Child Health, University of Nairobi, Nairobi, Kenya

8 ^cUmkhuseli Innovation and Research Management, Pietermaritzburg, South Africa

9 ^dDepartment of Medicine, University of Washington, Seattle, WA, USA

10 ^eDepartment of Global Health, University of Washington, Seattle, WA, USA

11 ^fEdendale Hospital, University of KwaZulu-Natal, Pietermaritzburg, South Africa

12

13 Running head: Sequence-specific purification of tuberculosis urine cfDNA

14

15 #Address correspondence to Barry R. Lutz (blutz@uw.edu) and Paul K. Drain

16 (pkdrain@uw.edu). These authors share senior authorship.

17 **ABSTRACT**

18 Transrenal urine cell-free DNA (cfDNA) is a promising tuberculosis (TB) biomarker, but is
19 challenging to detect because of the short length (<100 bp) and low concentration of TB-
20 specific fragments. We aimed to improve the diagnostic sensitivity of TB urine cfDNA by
21 increasing recovery of short fragments during sample preparation. We developed a highly
22 sensitive sequence-specific purification method that uses hybridization probes immobilized on
23 magnetic beads to capture short TB cfDNA (50 bp) with 91.8% average efficiency. Combined
24 with short-target PCR, the assay limit of detection was ≤ 5 copies of cfDNA in 10 mL urine. In a
25 clinical cohort study in South Africa, our urine cfDNA assay had 83.7% sensitivity (95% CI: 71.0–
26 91.5%) and 100% specificity (95% CI: 86.2–100%) for diagnosis of active pulmonary TB when
27 using sputum Xpert MTB/RIF as the reference standard. The detected cfDNA concentration was
28 0.14–2804 copies/mL (median 14.6 copies/mL) and was inversely correlated with CD4 count
29 and days to culture positivity. Sensitivity was non-significantly higher in HIV-positive (88.2%)
30 compared to HIV-negative patients (73.3%), and was not dependent on CD4 count. Sensitivity
31 remained high in sputum smear-negative (76.0%) and urine LAM-negative (76.5%) patients.
32 With improved sample preparation, urine cfDNA is a viable biomarker for TB diagnosis. Our
33 assay has the highest reported accuracy of any TB urine cfDNA test to date and has the
34 potential to enable rapid non-sputum-based TB diagnosis across key underserved patient
35 populations.

36 INTRODUCTION

37 Tuberculosis (TB) is the leading cause of global mortality due to infectious disease, with an
38 estimated 10 million cases and 1.4 million deaths in 2019 (1). An estimated 30% of TB cases
39 remain undiagnosed or unreported, in part due to limitations in rapid diagnostics (1). Current
40 TB tests rely on sputum samples, which are difficult to collect from people living with HIV,
41 severely ill patients, and children, and may not detect extrapulmonary TB (EPTB). Rapid
42 sputum-based tests (*e.g.*, smear microscopy, Xpert MTB/RIF) also have lower sensitivity in these
43 same underserved patient populations, who more often have paucibacillary TB (2–4). A WHO
44 consensus meeting identified a rapid, non-sputum-based test as one of the highest priority
45 target products for TB diagnostics (5).

46 Urine is an attractive alternate sample for TB diagnosis because it is easy to collect and poses
47 minimal transmission risk. In patients with active TB disease, TB-specific cell-free DNA (cfDNA)
48 fragments are released into the blood, a fraction of which are filtered through the kidneys and
49 excreted in the urine as transrenal cfDNA (6–8). TB-specific cfDNA has been detected in urine
50 from both HIV-negative and HIV-positive patients with pulmonary TB, but diagnostic
51 sensitivities have been inconsistent (0 – 79%) (8–13). High variability in methodology and
52 subsequent performance across studies have limited the understanding of TB urine cfDNA and
53 hindered its clinical implementation (14, 15).

54 Urine cfDNA is a challenging target due to the short length and low concentration of TB-specific
55 fragments. While plasma cfDNA has a peak fragment length of 167 bp, urine cfDNA is more
56 fragmented (7, 16, 17). Recently, new sequencing library preparation methods revealed that
57 very short, formerly-undetectable fragments compose a larger fraction of cfDNA than
58 previously realized (18–21). The majority of urine cfDNA fragments are <100 bp, with peak
59 fragment length ranging from 30 – 110 bp (16, 17, 21, 22). Although the fragment length of TB
60 cfDNA has not yet been characterized, bacterial cfDNA is expected to be especially fragmented
61 (peak <60 bp) because it is less protected by DNA-associated proteins (21, 23).

62 The low to moderate sensitivities reported in previous TB urine cfDNA studies are likely due in
63 part to sample preparation and/or amplification methods that are sub-optimal for short urine

64 cfDNA (6, 14). We hypothesized that we could increase the sensitivity of cfDNA-based TB
65 diagnosis by improving recovery of short cfDNA during the DNA extraction step. We developed
66 a highly sensitive sequence-specific purification method that uses DNA probes immobilized on
67 magnetic beads to extract TB-specific cfDNA via hybridization. By combining sequence-specific
68 purification with short-target PCR, we can reliably detect ≤ 5 copies of short (50 bp) cfDNA in 10
69 mL urine (24).

70 Here, we determined the diagnostic accuracy of our TB cfDNA assay in clinical urine specimens
71 for the first time. Our results demonstrate the advantages of our sequence-specific purification
72 approach, contribute to the growing evidence needed to establish urine cfDNA as a TB
73 biomarker, and will serve as the foundation for future clinical studies in expanded populations
74 (*e.g.*, children, individuals with EPTB).

75 **MATERIALS AND METHODS**

76 **Study design and participants.** Participants were enrolled at Edendale Hospital in
77 Pietermaritzburg, South Africa (approved by the University of KwaZulu-Natal Biomedical
78 Research Ethics Committee, #BE475/18). Adults (≥ 18 years old) meeting the case definition for
79 active pulmonary TB were recruited. As a control group, adults with excluded TB diagnosis and
80 no suspicion for active TB disease were enrolled. A separate healthy control group was enrolled
81 at the University of Washington, Seattle, USA (approved by the University of Washington
82 Institutional Review Board, #48840). Participants were adults (≥ 18 years old) with low risk of TB
83 exposure, as defined by birth in a country with low TB risk and no history of diagnosis of latent
84 TB, treatment for active or latent TB, or living with an individual with active TB. All participants
85 provided written informed consent. Samples were de-identified prior to testing at the
86 University of Washington where this study was conducted.

87 **Case definitions.** TB-positive participants (South Africa) were defined as those with a positive
88 sputum Xpert MTB/RIF (Cepheid, Sunnyvale, CA, USA) result within 5 days of enrollment and
89 the presence of one or more TB symptom (fever, night sweats, cough, and weight loss). Patients
90 with >72 hours of anti-TB treatment were excluded. TB-negative participants (South Africa) had

91 a primary diagnosis other than TB and no clinical suspicion for TB. Healthy controls (USA) were
92 recruited on a volunteer basis and were not seeking medical care.

93 **Clinical data, sputum testing, and urine lipoarabinomannan (LAM) testing.** Clinical data were
94 collected for all participants enrolled in South Africa. These included date of birth, gender,
95 weight, height, self-reported TB history, presence of TB symptoms (fever, night sweats, cough,
96 weight loss), TB treatment duration, HIV test result, and CD4⁺ cell count (for participants living
97 with HIV only). Expecterated sputum was submitted to the South African National Health
98 Laboratory System (NHLS) for confirmatory solid and liquid mycobacterial culture and AFB
99 smear microscopy. Mycobacterial culture was performed at the NHLS Provincial TB Reference
100 Laboratory using Middlebrook 7H11 solid agar medium and the liquid BACTEC mycobacterial
101 growth indicator tube (MGIT) 960 system (BD, Franklin Lakes, NJ, USA). Cultures were incubated
102 for up to 42 days. Culture plates were read at 3 and 6 weeks, and *M. tuberculosis* was identified
103 from solid or liquid cultures using niacin and nitrate testing. Participants were considered
104 culture-positive with growth from either the solid or liquid culture. Smear microscopy was
105 performed in the NHLS Laboratory at Edendale Hospital on decontaminated samples using both
106 Ziehl-Neelson and Auramine stains and considered positive if either stain revealed AFB. Urine
107 was tested using Alere Determine TB LAM Ag (Abbott Laboratories, Chicago, USA). Collection of
108 clinical data, sputum testing, and urine LAM testing were not done for healthy controls enrolled
109 in the USA.

110 **Urine collection and storage for cfDNA analysis.** Each participant was asked to provide a urine
111 sample upon enrollment. As soon as possible after collection, urine was mixed with EDTA and
112 Tris-HCl pH 7.5 to final concentrations of 25 mM and 10 mM, respectively. Urine was stored in
113 DNA LoBind tubes (Eppendorf, Hamburg, Germany) at -20°C at the collection site until shipping.
114 Samples were shipped on dry ice to the University of Washington, where they were stored at
115 -80°C until analysis. Immediately before analysis, urine was thawed at 37°C and centrifuged at
116 8,000g for 5 minutes to pellet cell debris. The cell-free urine supernatant was transferred to
117 new 15 mL DNA LoBind tubes (Eppendorf) and characterized using Fisherbrand 10-SG Urine
118 Reagent Strips (Thermo Fisher Scientific, Waltham, MA, USA) to measure the levels of glucose,
119 bilirubin, ketone, specific gravity, blood, pH, protein, urobilinogen, nitrite, and leukocytes.

120 **Purification of TB cfDNA from urine sequence-specific hybridization capture.** Urine (10 mL)
121 was analyzed in triplicate for each participant, with individual replicates processed on separate
122 days. TB-specific urine cfDNA was extracted using our in-house sequence-specific hybridization
123 capture method, as described previously (24). We have published a detailed, user-ready
124 protocol at <http://dx.doi.org/10.17504/protocols.io.bep4idqg>.

125 *Immobilization of capture probes on magnetic beads:* Dynabeads MyOne Streptavidin C1
126 (Thermo Fisher) were washed three times with an equal volume of high salt wash buffer (1M
127 NaCl, 10 mM Tris-HCl pH 8.0, 0.05% (v/v) Tween-20) and resuspended in an equal volume of
128 high salt wash buffer. Dual biotinylated capture probes BP1 and BP2 (Table 1), targeting
129 opposite strands of the double-stranded IS6110 target region, were pre-mixed in low-EDTA TE
130 buffer to a concentration of 50 μ M each. 25 pmol of each probe (0.5 μ L of probe mix) per 50 μ L
131 bead equivalent was added to the beads. The beads were immediately vortexed and rotated for
132 15 minutes at room temperature to immobilize capture probes on the beads. The beads were
133 washed three times with an equal volume of high salt wash buffer and resuspended in an equal
134 volume of high salt wash buffer.

135 *Sequence-specific capture of TB cfDNA:* 2.5 mL of 5 M NaCl (final concentration 1 M), 127 μ L of
136 10% (v/v) Tween-20 (final concentration 0.1%), and 50 μ L of prepared beads were added to
137 each 10 mL urine sample and gently mixed. The samples were denatured in a heat block set to
138 120°C for 15 minutes, so that the urine reached a temperature of >90°C. TB cfDNA was
139 hybridized to capture probes by rotation at room temperature for 30 minutes.

140 *Washing to remove urine and non-target DNA:* Samples were centrifuged for 5 minutes at
141 5000g to pellet beads. All but 1 mL of supernatant was removed and discarded. Beads were
142 resuspended in the remaining supernatant and transferred to 1.5 mL DNA LoBind tubes
143 (Eppendorf). The tubes were placed on an Invitrogen Dynamag-2 magnetic rack (Thermo Fisher)
144 for 1 minute and the remaining supernatant was discarded. The beads were washed twice with
145 1 mL high salt wash buffer and once with 1 mL low salt wash buffer (15 mM NaCl, 10 mM Tris-
146 HCl pH 8.0). For each wash, the tubes were inverted 10 – 20 times, or until no bead aggregate
147 was left on the tube walls, briefly spun down, and placed on the magnetic rack for 1 minute

148 before removing the wash buffer. After the final wash step, beads were spun down and any
149 residual buffer was removed.

150 *Elution of purified TB cfDNA:* Purified TB cfDNA was eluted using 20 μ L of freshly-prepared 20
151 mM NaOH. Beads were mixed with NaOH by vortexing, briefly spun down, and placed on the
152 magnetic rack. The eluate was transferred directly to PCR wells and partially neutralized with
153 3.5 μ L 100 mM HCl.

154 **Amplification of TB-specific urine cfDNA using short-target PCR.** The entire output (~24 μ L)
155 from each 10 mL urine sample was analyzed in a single PCR well. Each 50 μ L reaction contained
156 1.25 U OneTaq Hot Start DNA Polymerase (New England Biolabs [NEB, Ipswich, MA, USA]), 1X
157 OneTaq GC Reaction Buffer (NEB; 80 mM Tris-SO₄, 20 mM (NH₄)₂SO₄, 2 mM MgSO₄, 5% glycerol,
158 5% dimethyl sulfoxide, 0.06% IGEPAL CA-630, and 0.05% Tween-20, pH 9.2), 0.8 mM dNTPs
159 (NEB), 0.4X EvaGreen (Biotium, Fremont, CA, USA), 200 nM forward primer (Table 1), and 200
160 mM reverse primer (Table 1). qPCR was carried out in a CFX96 Touch Real-Time PCR Detection
161 System (Bio-Rad Laboratories, Hercules, CA, USA) using an initial incubation period of 94°C for 3
162 minutes, followed by 50 amplification cycles of 94°C for 30 seconds, 64°C for 30 seconds, and
163 68°C for 1 minute. Quantification cycle (C_q) values were determined using the CFX Maestro
164 software version 1.1 (Bio-Rad Laboratories) at a threshold of 500 RFU and recovered copies
165 were calculated using a standard curve run with each PCR. PCR products were confirmed by
166 post-amplification melt curve analysis from 65°C to 95°C in 0.5°C increments every 5 seconds.

167 **Table 1: Probe, primer, and target sequences.^a**

Oligo	Sequence
Dual biotinylated capture probe #1 (BP1)	5'-/52-Bio/AAAAAAAAAAAAAAAAAAAAA <u>CAGACCTCACCTATGTGT</u> /3SpC3/-3'

Dual 5'-/52-Bio/AAAAAAAAAAAAAAAAAAAAACCCTGCCCAGGTCGA/3SpC3/-3'

biotinylated
capture probe
#2 (BP2)^b

Forward 5'- CGAACCTGCCCAGGTCGA-3'

primer

Reverse 5'- GTA+GCAGA+CCTCACCTATGTGT-3'

primer

IS6110 target 5'- CGAACCTGCCCAGGTCGACACATAGGTGAGGTCTGCTAC-3'

(40 bp)

IS6110 reverse 5'-GTAGCAGACCTCACCTATGTGTCGACCTGGGCAGGGTTCG-3'

complement

(40 bp)

Synthetic 5'- CGAACCTGCCCAGGTCGAC**ACCATTCA**ACACATAGGTGAGGTCTGCTAC-3'

positive
control (50 bp)

Synthetic 5'-GTAGCAGACCTCACCTATGTG**TGTAATGGT**TCGACCTGGGCAGGGTTCG-3'

positive
control reverse
complement
(50 bp)

168 ^a /52-Bio/ indicates dual biotin modification; /3SpC3/ indicates carbon spacer; "+X" indicates
169 LNA base. Target-specific probe binding sequences are underlined. A synthetic spacer region
170 introduced to differentiate the synthetic positive control from the endogenous MTB complex-

171 specific target sequence (IS6110) is bolded. All DNA sequences were ordered HPLC-purified
172 from Integrated DNA Technologies (Coralville, IA, USA).

173 ^b BP2 targets the opposite strand (reverse complement) of the DNA strand targeted by BP1.

174 **Criteria for positive samples.** Criteria for positive samples were set prior to analysis, and the
175 assay operator was blinded to the clinical status of the samples until after processing was
176 complete and sample calls were made. Individual replicates were ruled as positive if ≥ 1 single-
177 stranded DNA copy of TB cfDNA was detected and the melt temperature (T_m) matched that of
178 the expected native TB amplicon (76°C). Individual replicates were ruled as negative if
179 insufficient TB cfDNA was detected (≤ 1 copy of single-stranded DNA) and/or the T_m did not
180 match that of the expected native TB amplicon. A sample was ruled as positive if at least two of
181 three replicates, analyzed on different days, were positive based on the above definitions.
182 Samples with zero or one positive replicates were ruled as negative.

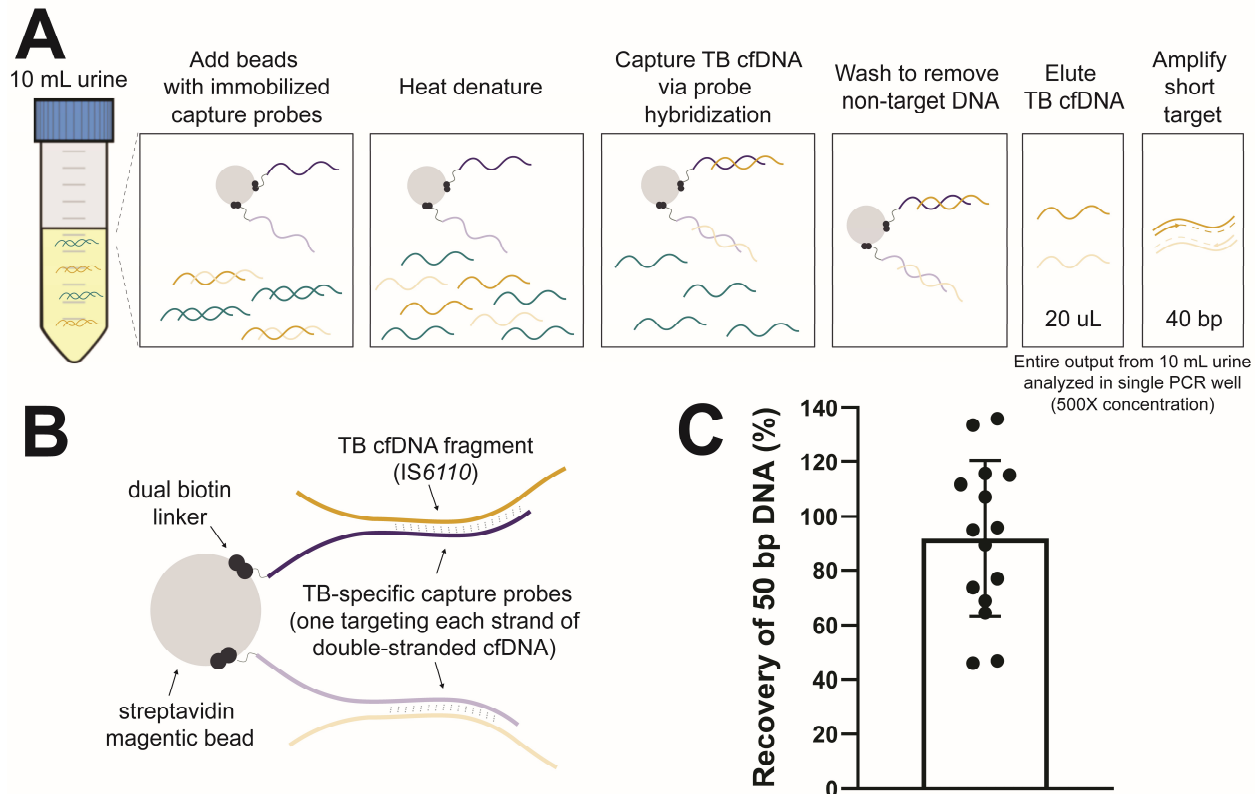
183 **PCR primer design, controls, and precautions to prevent false positives.** We designed PCR
184 primers targeting the insertion sequence IS6110, which is an established target for TB diagnosis
185 present at multiple, variable copy number across $\sim 99\%$ of *Mycobacterium tuberculosis* complex
186 strains (25). Our PCR primers (Table 1) amplify a short 40 bp target within a subregion of IS6110
187 that is conserved and specific to the *Mycobacterium tuberculosis* (MTB) complex (26). To avoid
188 false positives due to nonspecific amplification, we used locked nucleic acid (LNA) bases to
189 precisely match the T_m of the primers and selected an annealing temperature (T_a) slightly above
190 the primer T_m to encourage specific amplification without compromising amplification
191 efficiency. The final primer set and optimized PCR conditions result in an average PCR efficiency
192 of 97.1% (95% CI: 95.7 – 98.6%) and no amplification of no template controls (NTCs) or 10 ng of
193 human genomic DNA up to at least 45 cycles. To avoid false positives due to contamination, we
194 maintained good laboratory practices to limit contamination (*e.g.*, separating pre- and post-PCR
195 rooms, regular decontamination of work surfaces and pipettes, sterile filtered pipette tips,
196 aliquoting reagents into single-use volumes). In addition, we designed the synthetic positive
197 control (50 bp, used as a spike-in control during extraction and for PCR standard curves) to be
198 amplifiable by the same primer pair but distinguishable from the endogenous TB target
199 sequence (40 bp) by melt analysis (Table 1) so that any potential contamination with the

200 positive control would not result in false positives. Every experiment included a positive control
201 (pooled TB-negative urine spiked with 10^3 copies of double-stranded DNA synthetic positive
202 control template [Table 1]) and negative control (water without spiked target) that were run
203 throughout the entire extraction process alongside clinical urine samples. PCR NTCs (n=3) were
204 also included in each experiment.

205 **Statistical analysis.** Sensitivity and specificity were calculated using a positive sputum Xpert
206 MTB/RIF result and the presence of one or more TB symptoms as the reference standard. 95%
207 confidence intervals for sensitivity and specificity were calculated using the hybrid
208 Wilson/Brown method. Sensitivities were compared across groups using Fisher's exact test. The
209 detected cfDNA concentration was calculated based on the sample means of cfDNA-positive
210 samples. Detected cfDNA concentrations were compared across groups using the Mann-
211 Whitney test. Correlations with detected cfDNA concentration were assessed using Spearman's
212 correlation coefficient. Odds ratios were compared to a value of 1 using Fisher's exact test, with
213 95% confidence intervals determined using the Baptista-Pike method. All statistical analysis was
214 conducted using GraphPad Prism v8.1.2 (San Diego, CA, USA) with a significance level of 0.05.

215 **RESULTS**

216 **Analytical performance of sequence-specific TB cfDNA assay.** An overview of our cfDNA assay
217 is shown in Fig. 1A-B. Recovery of the spiked-in positive control was 91.8% (95% CI: 75.9 –
218 107.6%) across 15 independent experiments (Fig. 1C).



219

220 **Fig. 1: Capture and detection of short cfDNA fragments in urine using sequence-specific**
 221 **purification and short-target PCR. (A)** Overview of sequence-specific purification and short-
 222 target PCR (40 bp) protocol for TB cfDNA. **(B)** Schematic illustrating details of capture probe
 223 design targeting the MTB complex-specific insertion element IS6110. **(C)** Near complete
 224 recovery of short TB-specific DNA spiked into urine using sequence-specific purification. A
 225 positive control (10^3 copies of 50 bp double-stranded DNA in 10 mL pooled urine) was included
 226 throughout each experiment alongside clinical samples. The recovery of the positive control
 227 was calculated as a percentage of the input (mean \pm SD, n=15). Key design features, assay
 228 optimization, and additional analytical characterization of our sequence-specific purification
 229 method for cfDNA are reported in (24).

230 **Study participants.** We enrolled 73 participants across two sites: Edendale Hospital in South
 231 Africa (49 TB-positive, 10 TB-negative) and the University of Washington in the USA (14 healthy
 232 controls with low risk of TB exposure). Participant demographic and clinical data are
 233 summarized in Table 2.

234 **Table 2: Summary of study participants.**

		TB-positive^a patients (South Africa)	TB-negative controls (South Africa)	Healthy controls (USA)
Total [n]		49	10	14
Gender [n (%)]	Female	22 (44.9%)	8 (80.0%)	5 (35.7%)
	Male	27 (55.1%)	2 (20.0%)	9 (64.3%)
Age, years [median (IQR)]		38 (31 – 48)	32 (30.25 – 37.25)	26.5 (24 – 28.75)
Height, m [median (IQR)]		1.68 (1.65 – 1.70)	1.60 (1.59 – 1.68)	n/a
Weight, kg [median (IQR)]		55 (48 – 63)	57 (52 – 70)	n/a
HIV status [n (%)]	HIV-positive	34 (69.4%)	10 (100.0%)	n/a
	HIV-negative	15 (30.6%)	0 (0.0%)	n/a
CD4 ⁺ T-cell count (cells/mm ³) ^b [median (IQR)]		85 (42 – 345)	318 (257 – 746)	n/a
History of prior TB [n (%)]	No	32 (65.3%)	6 (60.0%)	14 (100.0%)
	Yes	17 (34.7%)	4 (40.0%)	0 (0.0%)
	Treatment-naïve	36 (73.5%)	n/a	n/a

TB treatment status [n (%)]	Some treatment ^c	13 (26.5%)	n/a	n/a
TB culture result [n (%)]	Culture-positive	34 (69.4%)	0	n/a
	Culture-negative	8 (16.3%)	9 (90.0%)	n/a
	No culture result	7 (14.3%)	1 (10.0%)	n/a
Days to culture positivity [median (IQR)]		13.5 (8.0 – 17.0)	n/a	n/a
AFB smear result [n (%)]	Smear-positive	19 (38.8%)	0 (0.0%)	n/a
	Smear-negative	25 (51.0%)	5 (50.0%)	n/a
	No smear result	5 (10.2%)	5 (50.0%)	n/a
Alere urine LAM result [n (%)]	LAM-positive	15 (30.6%)	0 (0.0%)	n/a
	LAM-negative	34 (69.4%)	10 (100.0%)	n/a

235 ^a TB-positive patients were defined as those with a positive Xpert MTB/RIF result and the
 236 presence of one or more TB symptoms.

237 ^b CD4 count was measured for HIV-positive patients only.

238 ^c All participants had ≤72 hours of treatment.

239 **Sensitivity and specificity of sequence-specific TB cfDNA assay.** A summary of the diagnostic
 240 accuracy of our TB urine cfDNA assay is given in Table 3. Full results for each participant,
 241 including paired clinical data and detected cfDNA concentration, are given in Supplemental
 242 Dataset S1. Using sputum Xpert MTB/RIF as the reference standard, we detected TB-specific
 243 urine cfDNA with 83.7% sensitivity (n=41/49; 95% CI: 71.0 – 91.5%) and 100% specificity

244 (n=24/24; 95% CI: 86.2 – 100%). No TB-specific cfDNA was detected in the urine of TB-negative
 245 controls in South Africa (n=10) or healthy controls in the USA (n=14).

246 Sensitivity was non-significantly higher in HIV-positive patients compared to HIV-negative
 247 patients (88.2% [n=30/34; 95% CI: 73.4 – 95.3%] vs. 73.3% [n=11/15; 95% CI: 48.1 – 89.1%];
 248 p=0.23). Sensitivity was similar in HIV-positive patients with CD4 counts of ≤ 200 and >200
 249 cells/mm³ (87.5% [n=20/22; 95% CI: 52.1 – 99.4%] vs. 83.3% [n=10/12; 95% CI: 55.2 – 97.0%]).
 250 Sensitivity was 77.8% (n=28/36; 95% CI: 61.9 – 88.3%) in treatment-naïve patients. If a positive
 251 sputum culture result was also required for the TB case definition, total sensitivity increased to
 252 88.2% (n=30/34; 95% CI: 73.4 – 95.3%). We detected TB-specific cfDNA in the urine of all
 253 patients with positive AFB sputum smear (n=19/19) and/or Alere urine LAM (n=15/15) results.
 254 Sensitivity remained high in smear-negative (76.0% [n=19/25; 95% CI: 56.6 – 88.5%]) and LAM-
 255 negative (76.5% [n=26/34; 95% CI: 60.0 – 87.6%]) patients. The reduction in sensitivity for
 256 smear-negative patients compared to smear-positive patients was significant (p=0.029), while
 257 that for LAM-negative compared to LAM-positive patients was not (p=0.087). See Table S1 for
 258 statistical analysis of sensitivity across groups.

259 We evaluated factors associated with TB cfDNA positivity and found that only a positive AFB
 260 smear result was significantly associated with a positive TB cfDNA result (odds ratio >1 ,
 261 p=0.029). HIV status, CD4 count, treatment status, culture result, and LAM result were not
 262 significantly associated with a positive urine cfDNA result (Table S2).

263 **Table 3: Sensitivity and specificity of TB urine cfDNA assay.**

		cfDNA- positive/ TB-positive (n/N)	Sensitivity (95% CI ^a) (%)	cfDNA- negative/ TB-negative (n/N)	Specificity (95% CI ^a) (%)
Total^b		41/49	83.7 (71.0 – 91.5)	24/24	100 (86.2 – 100)
HIV status	HIV-positive	30/34	88.2 (73.4 – 95.3)	10/10	100 (72.3 – 100)

	HIV-negative	11/15	73.3 (48.1 – 89.1)	0/0	n/a
CD4⁺ count^c	≤200 cells/mm ³	20/22	87.5 (52.1 – 99.4)	1/1	100 (51.0 – 100)
	>200 cells/mm ³	10/12	83.3 (55.2 – 97.0)	9/9	100 (70.1 – 100)
Sputum culture result	Positive	30/34	88.2 (73.4 – 95.3)	0/0	n/a
	Negative	6/8	75.0 (40.9 – 95.6)	9/9	100 (70.1 – 100)
AFB sputum smear result	Positive	19/19	100 (83.2 – 100)	0/0	n/a
	Negative	19/25	76.0 (56.6 – 88.5)	5/5	100 (56.6 – 100)
Alere urine LAM result	Positive	15/15	100 (79.6 – 100)	0/0	n/a
	Negative	26/34	76.5 (60.0 – 87.6)	10/10	100 (72.3 – 100)
TB treatment status	Treatment-naïve	28/36	77.8 (61.9 – 88.3)	10/10	100 (72.3 – 100)
	Some treatment ^d	13/13	100 (77.2 – 100)	0/0	n/a
Gender^b	Female	18/22	81.8 (61.5 – 92.7)	13/13	100 (77.2 – 100)
	Male	23/27	85.2 (67.5 – 94.1)	11/11	100 (74.1 – 100)

264 ^a 95% confidence intervals for sensitivity and specificity were calculated using the hybrid
 265 Wilson/Brown method.

266 ^b Healthy controls enrolled in the USA were included in total specificity and gender-specific
 267 specificity, but not in the remaining specificities.

268 ^c CD4 count was measured for HIV-positive patients only.

269 ^d All participants had ≤72 hours of treatment.

270 **Quantification of TB-specific cfDNA concentration in urine.** The detected TB-specific cfDNA
 271 concentration was variable and skewed towards low concentrations, with a median of 146
 272 copies in 10 mL urine (Table 4). The cfDNA concentration had a moderate inverse correlation
 273 with CD4 count (-0.43 [95% CI: -0.68 to -0.10; p=0.011]) (Fig. 2A) and days to culture positivity
 274 (-0.36 [95% CI: -0.64 to -0.0060; p=0.041]) (Fig S1), but no significant correlation with days of
 275 anti-TB treatment, AFB smear score, or Alere urine LAM score (Table S3). The cfDNA
 276 concentration was higher in patients with some treatment compared to treatment-naïve
 277 patients (p=0.045) and in urine LAM-positive patients compared to urine LAM-negative patients
 278 (p=0.0045), but was not significantly different in patients grouped by HIV status, CD4 count,
 279 culture result, smear result, or gender (Fig. 2B).

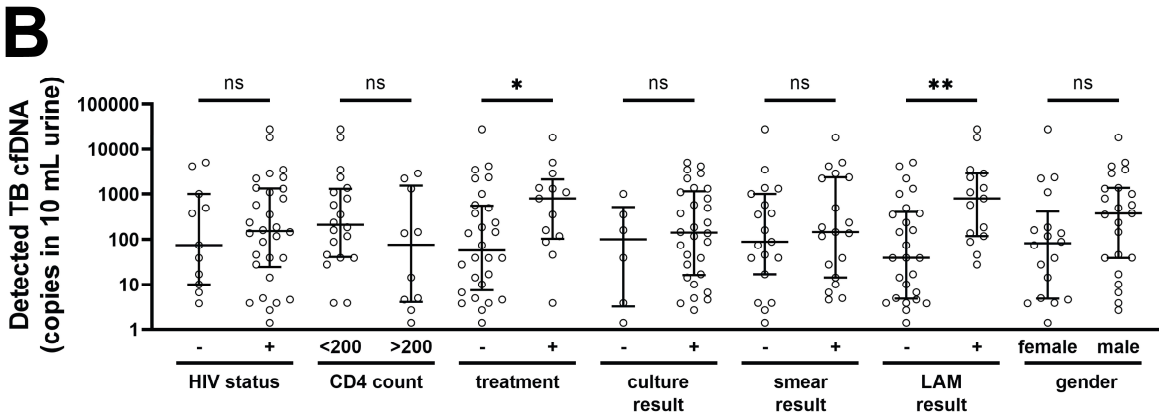
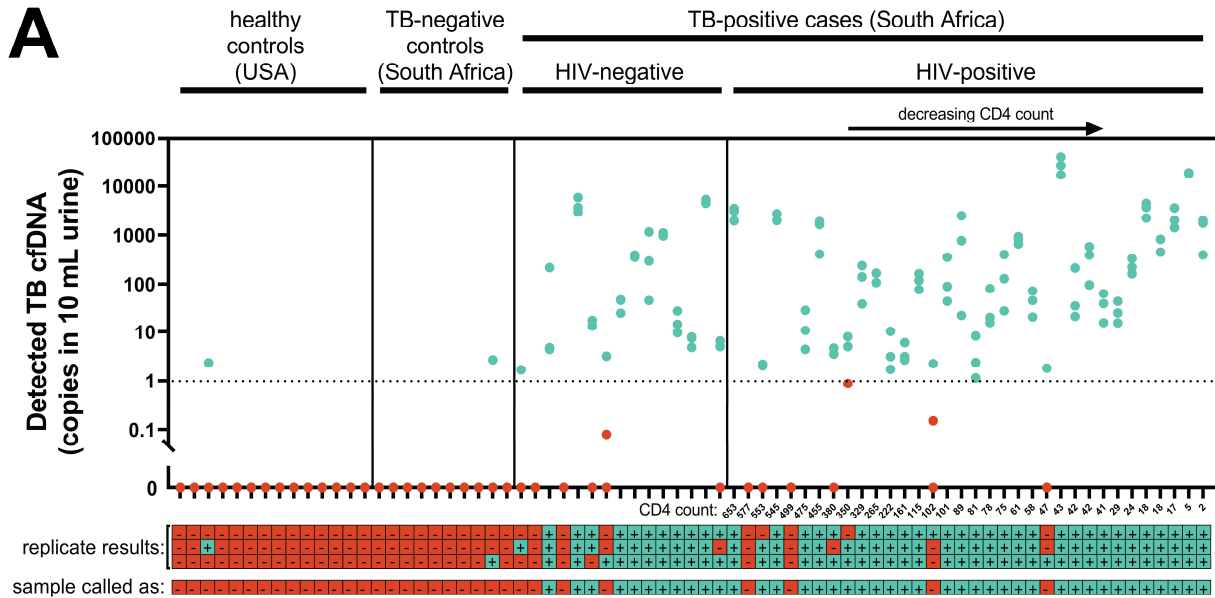
280 **Table 4: Detected concentrations of TB-specific urine cfDNA.**

		Median (IQR) ^a	Range ^a
		[copies in 10 mL urine]	[copies in 10 mL urine]
Total		146 (17 – 1092)	1.4 – 28044
TB treatment status^b	Treatment-naïve	57 (7.6 – 557)	1.4 – 28044
	Some treatment	796 (104 – 2111)	3.9 - 18543
Alere urine LAM result^c	Positive	796 (119 – 2851)	28 – 28044
	Negative	39 (4.9 – 404)	1.4 - 5021

281 ^a Concentration for each sample is given as copies of single-stranded DNA in 10 mL urine, which
 282 was calculated based on the mean across n=3 technical replicates.

283 ^b Detected cfDNA concentration was higher in patients with some treatment (Mann-Whitney,
 284 p=0.045).

285 ^c Detected cfDNA concentration was higher in patients with a positive urine LAM result (Mann-
 286 Whitney, p=0.0045).



287

288 **Fig. 2: Detected concentrations of TB-specific urine cfDNA. (A)** Concentration of TB cfDNA
289 detected in each participant's urine, stratified by HIV status and ranked by CD4 count. There
290 was a moderate inverse correlation between CD4 count and detected TB cfDNA concentration
291 (Spearman's $r = -0.43$ [95% CI: -0.68 to -0.10], $p = 0.011$), but TB cfDNA could be detected
292 regardless of HIV status and CD4 count. Each dot represents one of three replicates processed
293 on different days for each sample. Note that dots representing replicates with similar detected
294 concentrations may overlap. Replicates called as positive are shown in blue and replicates
295 called as negative are shown in red. The dashed line indicates the 1 copy per 10 mL threshold
296 used to define positive replicates. The legend below the plot indicates cfDNA detection status
297 by replicate (considered positive if ≥ 1 copy of single-stranded DNA was detected with melt
298 temperature matching that of the expected IS6110 amplicon) and by sample (considered

299 positive if ≥ 2 of 3 replicates were positive). **(B)** Comparison of detected TB cfDNA concentration
300 across groups (bars indicate median and IQR of sample means of cfDNA-positive samples). The
301 detected TB cfDNA concentration was significantly higher in patients with some treatment
302 compared to treatment-naïve patients, and in LAM-positive patients compared to LAM-
303 negative patients (* indicates Mann-Whitney $P < 0.05$; ** indicates Mann-Whitney $P < 0.01$),
304 but was not affected by HIV status, CD4 count, culture result, smear result, or gender (ns
305 indicates not significant). See Table S4 for calculated P-values for each comparison.

306 **DISCUSSION**

307 **Improved detection of short cfDNA in urine using sequence-specific purification.** To maximize
308 sensitivity of TB urine cfDNA detection, it is essential to use methods designed to detect low
309 concentrations of short fragments (6, 14, 15). Decreasing the minimum target length is
310 expected to improve cfDNA diagnostic sensitivity (8, 27–29). For example, decreasing PCR
311 amplicon length by a modest 10 bp (49 bp to 39 bp) led to more than 10-fold increase in
312 detected TB-specific cfDNA (29). Critically, in addition to amplifying short targets, sample
313 preparation methods must also extract short cfDNA from urine with high efficiency.
314 Conventional silica-based DNA extraction methods have reduced recovery of short fragments
315 and are thus not optimal for urine cfDNA (30).

316 We aimed to increase the diagnostic sensitivity of TB urine cfDNA detection by improving
317 recovery of short cfDNA during the DNA extraction step. We developed a sequence-specific
318 purification method that uses hybridization capture probes immobilized on magnetic beads to
319 extract short cfDNA with high analytical sensitivity. We have previously demonstrated that
320 sequence-specific purification improves recovery of short cfDNA fragments (25 – 150 bp) from
321 urine compared to alternate urine cfDNA extraction methods, including a protocol used for TB
322 urine cfDNA (31). In a recent paper detailing our sequence-specific purification method, we
323 described its key features, provided a user-ready protocol, and thoroughly characterized its
324 analytical performance (24). In this study, our sequence-specific approach recovered nearly all
325 target-specific 50 bp positive control DNA (91.8% average recovery) and was in some clinical
326 specimens able to detect down to a single copy of TB cfDNA in 10 mL urine.

327 **Diagnostic accuracy and comparison to previous TB urine cfDNA studies.** In this study, we
 328 tested our sequence-specific TB cfDNA assay in clinical urine specimens for the first time. The
 329 sensitivity and specificity of our assay for diagnosis of active pulmonary TB were 84% and 100%,
 330 respectively, the highest reported diagnostic accuracy of a TB cfDNA test. For comparison,
 331 previous TB urine cfDNA studies are summarized in Table 5 (8–12). For a comprehensive review
 332 of previous studies, refer to (14).

333 **Table 5: Comparison to previous studies targeting urine cfDNA for pulmonary TB diagnosis.^a**

First author	Year	DNA extraction		PCR amplicon length	Effective urine volume analyzed ^b	Proportion of smear-negative participants ^c	Sensitivity		Specificity
		Method	Designed for short urine cfDNA?				HIV-negative patients	HIV-positive patients	
Cannas (8)	2008	Wizard silica resin	Claimed, but we have identified limitations (<35% recovery of ≤150 bp DNA) ^d	129/67 bp (nested)	0.35 mL	2/43	79% (34/43)	NA	100% (23/23)
Peter (12) ^e	2012	Xpert cartridge	No	192 bp (Xpert)	NR	NR	8% (3/38)	NA	NA
Fortún (13)	2014	NR	No	NR (AMTD)	NR	NR	18% (5/28)	NA	NA
Bordelon (11)	2017	MagMAX silica beads	No	67 bp	0.1 – 0.5 mL	NR	0% (0/33)	NA	0% (0/31)
Labugger (9)	2017	Unspecified silica resin ^f	Claimed (33% recovery of 75 bp DNA) ^g	38 bp	1.6 mL	4/10	64% (7/11)	NA	100% (8/8)
Patel (10)	2018	Unspecified silica resin ^f	Claimed (~50% recovery of gDNA) ^h	38 bp	NR	45/175	40% (36/90)	45% (38/84)	89% (210/237)
Oreskovic (this study)		Sequence-specific purification	Yes (>90% recovery of 50 bp DNA)	40 bp	10 mL	30/49	73% (11/15)	88% (30/34)	100% (24/24)

334 NR indicates not reported. NA indicates not applicable. Xpert indicates Xpert MTB/RIF assay
335 (Cepheid). AMTD indicates Amplified Mycobacterium Tuberculosis Direct Test (Gen-Probe).
336 gDNA indicates TB genomic DNA.

337 ^a Included studies specifically targeted urine cell-free DNA for pulmonary TB diagnosis. Studies
338 analyzing cell-associated DNA, plasma cfDNA, or EPTB were excluded. Studies targeting plasma
339 cfDNA were excluded here but reported 65%/93% (32), 29%/100% (32), and 45%/67% (33)
340 sensitivity/specificity.

341 ^b Calculated based on the urine input volume, elution volume, and PCR input volume.

342 ^c Given as proportion of TB-positive participants who had a negative sputum smear microscopy
343 result. cfDNA detection sensitivity may be lower in smear-negative patients compared to
344 smear-positive patients.

345 ^d We found that the Wizard silica method had low recovery of short fragments (<35% for 40 –
346 150 bp) and was dependent on urine composition (*i.e.*, pH and non-target DNA concentration)
347 (31).

348 ^e Peter *et al.* tested both whole urine and the insoluble fraction of urine concentrated by
349 centrifugation. Only results from whole urine testing are listed here because cfDNA is expected
350 to be in the soluble fraction of centrifuged urine.

351 ^f Labugger *et al.* and Patel *et al.* used a silica resin-based method similar to that used by Cannas
352 *et al.*, but did not specify the resin or binding buffer.

353 ^g Estimated based on reported average of 1.6 cycle delay for extraction calibration curves
354 compared to PCR calibration curves for genomic DNA and a 75 bp target.

355 ^h Estimated based on reported approximate 1 cycle delay for extraction calibration curves
356 compared to PCR calibration curves for genomic DNA.

357 Prior studies showed potential for detection of TB-specific urine cfDNA in HIV-positive and HIV-
358 negative patients, but had variable sensitivity due to sample preparation and/or amplification
359 methods sub-optimal for short targets (6, 14, 15). Cannas *et al.* used an in-house silica resin
360 method (based on Promega Wizard DNA Purification Resin) reportedly designed to improve

361 binding of short cfDNA, but did not report its analytical performance (*e.g.*, percent recovery)
362 (8). While the Wizard method improves upon conventional silica-based methods, our past
363 testing revealed limited recovery (<35%) of ≤ 150 bp fragments (31). It was also highly
364 dependent on urine composition and is likely to fail in samples with high pH and/or low non-
365 target DNA concentrations (31). Labugger *et al.* and Patel *et al.* used a similar silica resin-based
366 method, but did not specify the resin or binding conditions (9, 10). It is possible that their
367 method suffers from similar limitations as the Wizard method used by Cannas *et al.*, although
368 we could not experimentally verify this. They reported recoveries of approximately 30 – 50%
369 and limits of detection of 3 copies/mL (75 bp target) (9) and 1.25 copies/mL (TB gDNA
370 containing up to 42 target repeats) (10). Our sequence-specific purification method increases
371 percent recovery by 2-fold or more and improves the limit of detection to ≤ 0.5 copies/mL of 50
372 bp cfDNA (positivity cutoff threshold of 0.1 copies/mL used here). Our method allows the full
373 volume eluted from a 10 mL urine extraction to be amplified in a single PCR well, maximizing
374 sensitivity for detection of low-concentration samples.

375 Past studies also enrolled few smear-negative participants, and thus have not tested the ability
376 to detect urine cfDNA in individuals with paucibacillary TB who stand to benefit most from a
377 non-sputum-based test. In particular, the most promising study by Cannas *et al.* included only
378 5% (2/43) smear-negative participants. Our results indicate that cfDNA detection sensitivity is
379 higher in smear-positive compared to smear-negative individuals, so enrollment biased towards
380 smear-positive participants may lead to an overestimation of assay sensitivity. In contrast, we
381 demonstrated higher sensitivity while including 61% (30/49) smear-negative participants.

382 Although not directly tested here, an added benefit of our sequence-specific approach is that it
383 may help ensure specificity by removing non-target DNA. Sequence-specific purification has
384 been used to improve sensitivity of TB diagnosis from sputum by removing high concentrations
385 of non-target DNA that can lead to downstream amplification inhibition (34), but has not been
386 applied in urine where the primary advantage of non-target DNA removal would be to reduce
387 the likelihood of downstream nonspecific amplification. Confirming specific amplification of
388 short targets without the footprint for a fluorescent detection probe can be difficult, but the

389 added layer of specificity offered by sequence-specific purification may aid in overcoming this
390 challenge.

391 **Comparison to existing rapid TB tests.** Our urine cfDNA assay has the potential to diagnose TB
392 in individuals who may be missed by other rapid tests (*e.g.*, smear microscopy, urine LAM). We
393 detected TB-specific cfDNA in the urine of all smear-positive and LAM-positive patients.
394 Importantly, sensitivity remained high in both smear-negative (76.0%) and LAM-negative
395 (76.5%) patients. The target product profile for a rapid biomarker-based non-sputum-based TB
396 test outlines the optimal requirements for pulmonary TB in adults as $\geq 98\%$ for smear-positive
397 TB, $\geq 68\%$ for smear-negative TB, and $\geq 80\%$ sensitivity for HIV-associated TB (5). Our results
398 suggest that, by employing an optimized extraction method with demonstrated high efficiency
399 for short fragments, urine cfDNA-based assays have the potential to achieve sufficient
400 sensitivity to meet these criteria and improve diagnostic accuracy compared to smear
401 microscopy.

402 Unlike urine LAM tests, which have insufficient sensitivity, particularly in HIV-negative
403 individuals (35), cfDNA tests have the potential to diagnose TB regardless of HIV status and CD4
404 count. We observed slightly higher sensitivity in HIV-positive (88.2%) compared to HIV-negative
405 (73.3%) patients, but the difference was non-significant and the number of HIV-negative
406 patients was small. Despite a moderate inverse correlation between CD4 count and detected
407 TB-specific cfDNA concentration, there was no difference in sensitivity for HIV-positive patients
408 with CD4 counts of ≤ 200 compared to >200 cells/mm³. In contrast, the commercially-available
409 Alere Determine TB LAM test has 42% pooled sensitivity in HIV-positive individuals, with
410 sensitivity inversely proportional to CD4 cell count (36). The WHO only recommends its use in
411 people living with HIV but not as a general screening test for TB (37). Ongoing efforts aim to
412 improve urine LAM detection sensitivity. The Fujifilm SILVAMP TB LAM test improves sensitivity
413 relative to Alere LAM in both HIV-positive (70% vs. 42%) and HIV-negative (53% vs. 11%)
414 individuals (38, 39). As antigen-based tests, however, LAM assays may not be able to achieve
415 the sensitivity afforded by nucleic acid amplification tests.

416 **Contributions to evidence for urine cfDNA as a biomarker for TB.** To date, usefulness of urine
417 cfDNA as a biomarker for TB has been limited, in part due to inconsistent methods and results

418 in previous TB urine cfDNA studies. Our study contributes to the evidence for urine cfDNA as a
419 TB biomarker in two ways: 1) demonstration of the feasibility of high sensitivity and specificity
420 with optimal pre-analytical methods and 2) development of a reliable, quantifiable method to
421 further study TB urine cfDNA. Previous TB urine cfDNA studies have focused on measuring
422 diagnostic accuracy, and have mostly neglected to report TB urine cfDNA concentrations.
423 Labugger *et al.* measured concentrations for a limited number of treatment-naïve individuals
424 ($n=7$), which ranged from 1 – 41 copies/mL (median 6.5 copies/mL) (9). Here, we quantified TB-
425 specific cfDNA to better estimate the clinical range (<1 – 2804 copies/mL; median 14.6
426 copies/mL), and have conducted analyses to determine which variables correlate with cfDNA
427 concentration. We found that cfDNA concentration was higher in LAM-positive patients
428 compared to LAM-negative patients, but LAM result did not affect cfDNA sensitivity. We
429 detected cfDNA in all patients who had recently initiated TB treatment, with a higher
430 concentration compared to treatment-naïve patients, supporting the possibility of using cfDNA
431 for treatment monitoring as suggested previously (9). Upon initiation of a successful treatment
432 regimen, cfDNA concentration may temporarily increase, followed by a slow decline as the
433 infection is cleared (9). Our study did not show a correlation between days of treatment and
434 cfDNA concentration, but only included participants with ≤ 3 days of treatment and did not
435 monitor individual participants over time.

436 Although cfDNA was detectable regardless of HIV status or CD4 count, the detected
437 concentration had a moderate inverse correlation with CD4 count. We also found that cfDNA
438 concentration had a moderate inverse correlation with days to culture positivity, suggesting
439 that levels of excreted cfDNA may be related to bacterial burden. We observed no correlation
440 with AFB sputum smear score or Alere urine LAM score, but the sample sizes for these analyses
441 were low. We anticipate that our assay can be used to continue to study TB urine cfDNA trends
442 across sub-groups and answer important unresolved questions regarding optimal sample
443 collection techniques, processing methods, and storage conditions that have been the focus of
444 recent work (40–42). As a caveat, the cfDNA concentrations measured by our assay may be
445 confounded by the variable copy number of *IS6110* (0–25 copies) (25) and by differences in

446 participants' hydration statuses. In the future, strain typing and normalizing cfDNA
447 concentration to urine creatinine may help better elucidate trends in cfDNA concentration.

448 **Study limitations and future work.** TB symptoms were required in addition to a positive Xpert
449 result for the TB case definition to reduce the risk of a false-positive Xpert result, but it is
450 possible that some could still have occurred. Using the strictest TB-positive criteria, requiring
451 both positive Xpert and positive culture, would result in a non-significant increase in cfDNA
452 sensitivity (88%). Several TB-positive, cfDNA-negative samples (false negatives) narrowly missed
453 the cfDNA positivity cutoff, suggesting the opportunity for future improvement in clinical
454 sensitivity. We are currently pursuing two approaches to further improve our assay's ability to
455 detect low cfDNA concentrations: a reduction in PCR target length (to 25 bp using an ultrashort
456 PCR design described in (31)) and multiplexing to target multiple genomic regions. Multiplexing
457 will have the additional benefit of improving inclusivity by enabling detection of TB strains
458 lacking *IS6110*.

459 This study serves as a valuable demonstration of the feasibility of our sequence-specific
460 approach, but the sample size and scope were limited. Future studies will seek to further
461 validate our assay with larger sample sizes (including more HIV-negative participants and
462 negative controls) and expanded populations, specifically those underserved by current rapid
463 sputum-based tests (including children and patients with EPTB). TB-specific cfDNA has been
464 detected in the urine (13) and plasma (43–45) of individuals with EPTB, including a case study of
465 a child with tubercular otitis media (46), but there have not yet been any prospective studies in
466 children. Our assay also currently requires a trained user and laboratory equipment. In the
467 future, we aim to simplify our lab-based test into a format more suitable for use in resource-
468 limited settings.

469 **Conclusion.** Sequence-specific purification improves recovery of short urine cfDNA and
470 increases the sensitivity of TB diagnosis from urine cfDNA. Our assay has the highest reported
471 accuracy of any TB urine cfDNA test to date and has the potential to enable urine-based TB
472 diagnosis across sputum-scarce and paucibacillary populations. This study will lay the
473 foundation for expanded clinical studies and future development of a rapid test. In addition,

474 our work serves as a valuable contribution to the clinical evidence for urine cfDNA as a
475 biomarker for TB. The ability to diagnose TB across key underserved populations (*e.g.*, children,
476 people living with HIV, individuals with EPTB) using urine samples would address an urgent
477 need that was identified as one of the highest priority gaps in TB diagnostics (5). A sensitive
478 urine-based test built upon the sequence-specific purification method described here could
479 significantly contribute to improving sample availability, expanding access to rapid TB diagnosis,
480 and controlling the TB epidemic.

481 **ACKNOWLEDGEMENTS**

482 We are grateful to study participants for their contributions to this research. We thank the
483 KwaZulu-Natal Department of Health and staff of Edendale Hospital for their partnership and
484 Norman D. Brault and James Lai for their contributions to the early development of the
485 sequence-specific purification method. Research reported in this publication was funded by the
486 Bill and Melinda Gates Foundation under award number OPP1152864 and the National
487 Institute of Allergy and Infectious Diseases of the National Institutes of Health under award
488 number R21AI125975. The content is solely the responsibility of the authors and does not
489 necessarily represent the official views of the National Institutes of Health. This research was
490 funded in part by a 2018 CFAR developmental grant from the University of Washington/Fred
491 Hutch Center for AIDS Research, an NIH-funded program under award number AI027757 which
492 is supported by the following NIH Institutes and Centers: NIAID, NCI, NIMH, NIDA, NICHD,
493 NHLBI, NIA, NIGMS, NIDDK. A.O. was supported by funding from the National Science
494 Foundation Graduate Research Fellowship Program. The funders had no role in study design,
495 data collection and interpretation, or the decision to submit the work for publication.

496 **REFERENCES**

- 497 1. World Health Organization. 2020. Global tuberculosis report 2020.
- 498 2. Horne DJ, Kohli M, Zifodya JS, Schiller I, Dendukuri N, Tollefson D, Schumacher SG,
499 Ochodo EA, Pai M, Steingart KR. 2019. Xpert MTB/RIF and Xpert MTB/RIF Ultra for
500 pulmonary tuberculosis and rifampicin resistance in adults. *Cochrane Database Syst Rev*
501 2019:6.
- 502 3. Detjen AK, DiNardo AR, Leyden J, Steingart KR, Menzies D, Schiller I, Dendukuri N,
503 Mandalakas AM. 2015. Xpert MTB/RIF assay for the diagnosis of pulmonary tuberculosis
504 in children: a systematic review and meta-analysis. *Lancet Respir Med* 3:451–61.
- 505 4. Kohli M, Schiller I, Dendukuri N, Dheda K, Denkinger CM, Schumacher SG, Steingart KR.
506 2018. Xpert MTB/RIF assay for extrapulmonary tuberculosis and rifampicin resistance.
507 *Cochrane Database Syst Rev* 2018:8.
- 508 5. World Health Organization. 2014. High-priority target product profiles for new
509 tuberculosis diagnostics: report of a consensus meeting.
- 510 6. Green C, Huggett JF, Talbot E, Mwaba P, Reither K, Zumla AI. 2009. Rapid diagnosis of
511 tuberculosis through the detection of mycobacterial DNA in urine by nucleic acid
512 amplification methods. *Lancet Infect Dis* 9:505–511.
- 513 7. Botezatu I, Serdyuk O, Potapova G, Shelepov V, Alechina R, Molyaka Y, Ananév V, Bazin I,
514 Garin A, Narimanov M, Knysh V, Melkonyan H, Umansky S, Lichtenstein A. 2000. Genetic
515 analysis of DNA excreted in urine: a new approach for detecting specific genomic DNA
516 sequences from cells dying in an organism. *Clin Chem* 46:1078–84.
- 517 8. Cannas A, Goletti D, Girardi E, Chiacchio T, Calvo L, Cuzzi G, Piacentini M, Melkonyan H,
518 Umansky SR, Lauria FN, Ippolito G, Tomei LD. 2008. *Mycobacterium tuberculosis* DNA
519 detection in soluble fraction of urine from pulmonary tuberculosis patients. *Int J Tuberc*
520 *Lung Dis* 12:146–151.
- 521 9. Labugger I, Heyckendorf J, Dees S, Häussinger E, Herzmann C, Kohl TA, Richter E, Rivera-
522 Milla E, Lange C. 2016. Detection of transrenal DNA for the diagnosis of pulmonary

- 523 tuberculosis and treatment monitoring. *Infection* 45:1–8.
- 524 10. Patel K, Nagel M, Wesolowski M, Dees S, Rivera-Milla E, Geldmacher C, Dheda K,
525 Hoelscher M, Labugger I. 2018. Evaluation of a Urine-Based Rapid Molecular Diagnostic
526 Test with Potential to Be Used at Point-of-Care for Pulmonary Tuberculosis: Cape Town
527 Cohort. *J Mol Diagnostics* 20:215–224.
- 528 11. Bordelon H, Ricks KM, Pask ME, Russ PK, Solinas F, Baglia ML, Short PA, Nel A, Blackburn
529 J, Dheda K, Zamudio C, Cáceres T, Wright DW, Haselton FR, Pettit AC. 2017. Design and
530 use of mouse control DNA for DNA biomarker extraction and PCR detection from urine:
531 Application for transrenal *Mycobacterium tuberculosis* DNA detection. *J Microbiol*
532 *Methods* 136:65–70.
- 533 12. Peter JG, Theron G, Muchinga TE, Govender U, Dheda K. 2012. The diagnostic accuracy of
534 urine-based Xpert MTB/RIF in HIV-infected hospitalized patients who are smear-negative
535 or sputum scarce. *PLoS One* 7:1–8.
- 536 13. Fortún J, Martín-Dá P, G´omez-Mampaso E, Gonzá Lez-García A, Barbolla I, G´omez-
537 García I, Wikman P, Ortíz J, Navas E, Cuartero C, Gijón D, Gijón G, Moreno S. 2014. Extra-
538 pulmonary tuberculosis: differential aspects and role of 16S-rRNA in urine. *Int J Tuberc*
539 *Lung Dis* 18:478–485.
- 540 14. Leticia Fernández-Carballo B, Broger T, Wyss R, Banaei N. 2019. Towards the
541 development of a cfDNA-based in-vitro diagnostic test for infectious diseases: A review
542 of evidence for tuberculosis. *J Clin Microbiol* 57:e01234-18.
- 543 15. Marangu D, Devine B, John-Stewart G. 2015. Diagnostic accuracy of nucleic acid
544 amplification tests in urine for pulmonary tuberculosis: A meta-analysis. *Int J Tuberc Lung*
545 *Dis* 19:1339–47.
- 546 16. Tsui NBY, Jiang P, Chow KCK, Su X, Leung TY, Sun H, Chan KCA, Chiu RWK, Lo YMD. 2012.
547 High resolution size analysis of fetal DNA in the urine of pregnant women by paired-end
548 massively parallel sequencing. *PLoS One* 7:e48319.
- 549 17. Markus H, Zhao J, Contente-Cuomo T, Raupach E, Odenheimer-Bergman A, Connor S,

- 550 McDonald BR, Hutchins E, Mcgilvery M, De La Maza MC, Van Keuren-Jensen K, Pirrotte P,
551 Goel A, Becerra C, Von Hoff DD, Celinski SA, Hingorani P, Murtaza M. Sub-nucleosomal
552 organization in urine cell-free DNA. bioRxiv <https://doi.org/10.1101/696633>.
- 553 18. Burnham P, Kim MS, Agbor-Enoh S, Luikart H, Valantine HA, Khush KK, De Vlaminck I.
554 2016. Single-stranded DNA library preparation uncovers the origin and diversity of
555 ultrashort cell-free DNA in plasma. *Sci Rep* 6:27859.
- 556 19. Snyder MW, Kircher M, Hill AJ, Daza RM, Shendure J. 2016. Cell-free DNA Comprises an *in*
557 *Vivo* Nucleosome Footprint that Informs Its Tissues-Of-Origin. *Cell* 164:57–68.
- 558 20. Sanchez C, Snyder MW, Tanos R, Shendure J, Thierry AR. 2018. New insights into
559 structural features and optimal detection of circulating tumor DNA determined by single-
560 strand DNA analysis. *npj Genomic Med* 3:31.
- 561 21. Burnham P, Dadhania D, Heyang M, Chen F, Westblade LF, Suthanthiran M, Lee JR, De
562 Vlaminck I. 2018. Urinary cell-free DNA is a versatile analyte for monitoring infections of
563 the urinary tract. *Nat Commun* 9:2412.
- 564 22. Cheng THTT, Jiang P, Tam JCWW, Sun X, Lee W-S, Yu SCYY, Teoh JYCC, Chiu PKFF, Ng C-F,
565 Chow K-M, Szeto C-C, Chan KCACA, Chiu RWKK, Dennis Lo YM, Lo YMD. 2017.
566 Genomewide bisulfite sequencing reveals the origin and time-dependent fragmentation
567 of urinary cfDNA. *Clin Biochem* 50:496–501.
- 568 23. Yao W, Mei C, Nan X, Hui L. 2016. Evaluation and comparison of *in vitro* degradation
569 kinetics of DNA in serum, urine and saliva: A qualitative study. *Gene* 590:142–148.
- 570 24. Oreskovic A, Lutz B. 2021. Ultrasensitive hybridization capture: reliable detection of <1
571 copy/mL short cell-free DNA from large-volume urine samples. *PLoS One* (revised
572 manuscript under review).
- 573 25. del Carmen Menéndez M, Samper S, Otal I, García MJ. 2012. IS6110 the Double-Edged
574 Passenger, p. 59–88. *In* Cardona, P-J (ed.), *Understanding Tuberculosis – Deciphering the*
575 *Secret Life of the Bacilli*. InTech Open.
- 576 26. Hellyer TJ, Desjardin LE, Assaf MK, Bates JH, Cave MD, Eisenach KD. 1996. Specificity of

- 577 IS6110-based amplification assays for Mycobacterium tuberculosis complex. *J Clin*
578 *Microbiol* 34:2843–2846.
- 579 27. Su Y-H, Wang M, Block TM, Landt O, Botezatu I, Serdyuk O, Lichtenstein A, Melkonyan H,
580 Tomei LD, Umansky S. 2004. Transrenal DNA as a diagnostic tool: important technical
581 notes. *Ann N Y Acad Sci* 1022:81–9.
- 582 28. Shekhtman EM, Anne K, Melkonyan HS, Robbins DJ, Warsof SL, Umansky SR. 2009.
583 Optimization of transrenal DNA analysis: detection of fetal DNA in maternal urine. *Clin*
584 *Chem* 55:723–9.
- 585 29. Melkonyan HS, Feaver WJ, Meyer E, Scheinker V, Shekhtman EM, Xin ZH, Umansky SR.
586 2008. Transrenal Nucleic Acids: From Proof of Principle to Clinical Tests. *Ann N Y Acad Sci*
587 1137:73–81.
- 588 30. Boom R, Sol C, MM S, Jansen C, Wertheim-van Dillen P, van der Noordaa J. 1990. Rapid
589 and Simple Method for Purification of Nucleic Acids. *J Clin Microbiol* 28:495–503.
- 590 31. Oreskovic A, Brault ND, Panpradist N, Lai JJ, Lutz BR. 2019. Analytical Comparison of
591 Methods for Extraction of Short Cell-Free DNA from Urine. *J Mol Diagnostics* 21:1067–
592 1078.
- 593 32. Ushio R, Yamamoto M, Nakashima K, Watanabe H, Nagai K, Shibata Y, Tashiro K,
594 Tsukahara T, Nagakura H, Horita N, Sato T, Shinkai M, Kudo M, Ueda A, Kaneko T. 2016.
595 Digital PCR assay detection of circulating Mycobacterium tuberculosis DNA in pulmonary
596 tuberculosis patient plasma. *Tuberculosis* 99:47–53.
- 597 33. Click ES, Murithi W, Ouma GS, McCarthy K, Willby M, Musau S, Alexander H, Pevzner E,
598 Posey J, Cain KP. 2018. Detection of Apparent Cell-free M. tuberculosis DNA from Plasma.
599 *Sci Rep* 8:645.
- 600 34. Reed JL, Basu D, Butzler MA, McFall SM. 2017. XtracTB Assay, a Mycobacterium
601 tuberculosis molecular screening test with sensitivity approaching culture. *Sci Rep*
602 7:3653.
- 603 35. Minion J, Leung E, Talbot E, Dheda K, Pai M, Menzies D. 2011. Diagnosing tuberculosis

- 604 with urine lipoarabinomannan: systematic review and meta-analysis. *Eur Respir J*
605 38:1398–1405.
- 606 36. Bjerrum S, Schiller I, Dendukuri N, Kohli M, Nathavitharana RR, Zwerling AA, Denkinger
607 CM, Steingart KR, Shah M. 2019. Lateral flow urine lipoarabinomannan assay for
608 detecting active tuberculosis in people living with HIV. *Cochrane Database Syst Rev*
609 2019:10.
- 610 37. World Health Organization. 2019. Lateral flow urine lipoarabinomannan assay (LF-LAM)
611 for the diagnosis of active tuberculosis in people living with HIV: Policy update (2019).
- 612 38. Broger T, Nicol MP, Sigal GB, Gotuzzo E, Zimmer AJ, Surtie S, Caceres-Nakiche T,
613 Mantsoki A, Reipold EI, Székely R, Tsionsky M, van Heerden J, Plisova T, Chikamatsu K,
614 Lowary TL, Pinter A, Mitarai S, Moreau E, Schumacher SG, Denkinger CM. 2020.
615 Diagnostic accuracy of 3 urine lipoarabinomannan tuberculosis assays in HIV-negative
616 outpatients. *J Clin Invest* 130:5756–5764.
- 617 39. Broger T, Sossen B, du Toit E, Kerkhoff AD, Schutz C, Ivanova Reipold E, Ward A, Barr DA,
618 Macé A, Trollip A, Burton R, Ongarello S, Pinter A, Lowary TL, Boehme C, Nicol MP,
619 Meintjes G, Denkinger CM. 2019. Novel lipoarabinomannan point-of-care tuberculosis
620 test for people with HIV: a diagnostic accuracy study. *Lancet Infect Dis* 19:852–861.
- 621 40. Murugesan K, Hogan CA, Palmer Z, Reeve B, Theron G, Andama A, Somoskovi A,
622 Steadman A, Madan D, Andrews J, Croda J, Sahoo MK, Cattamanchi A, Pinsky BA, Banaei
623 N. 2019. Investigation of preanalytical variables impacting pathogen cell-free DNA in
624 blood and urine. *J Clin Microbiol* 57:e00782-19.
- 625 41. Lee EY, Lee E-J, Yoon H, Lee DH, Kim KH. 2020. Comparison of Four Commercial Kits for
626 Isolation of Urinary Cell-Free DNA and Sample Storage Conditions. *Diagnostics* 10:234.
- 627 42. Augustus E, Van Casteren K, Sorber L, van Dam P, Roeyen G, Peeters M, Vorsters A,
628 Wouters A, Raskin J, Rolfo C, Zwaenepoel K, Pauwels P. 2020. The art of obtaining a high
629 yield of cell-free DNA from urine. *PLoS One* 15:e0231058.
- 630 43. Yamamoto M, Ushio R, Watanabe H, Tachibana T, Tanaka M, Yokose T, Tsukiji J,

- 631 Nakajima H, Kaneko T. 2018. Detection of Mycobacterium tuberculosis-derived DNA in
632 circulating cell-free DNA from a patient with disseminated infection using digital PCR. Int
633 J Infect Dis 66:80–82.
- 634 44. Lyu L, Li Z, Pan L, Jia H, Sun Q, Liu Q, Zhang Z. 2020. Evaluation of digital PCR assay in
635 detection of M.tuberculosis IS6110 and IS1081 in tuberculosis patients plasma. BMC
636 Infect Dis 20:657.
- 637 45. Yang J, Han X, Liu A, Bai X, Xu C, Bao F, Feng S, Tao L, Ma M, Peng Y. 2017. Use of Digital
638 Droplet PCR to Detect Mycobacterium tuberculosis DNA in Whole Blood-Derived DNA
639 Samples from Patients with Pulmonary and Extrapulmonary Tuberculosis. Front Cell
640 Infect Microbiol 7:369.
- 641 46. Petrucci R, Lombardi G, Corsini I, Visciotti F, Pirodda A, Cazzato S, Landini MP, Dal Monte
642 P. 2015. Use of transrenal DNA for the diagnosis of extrapulmonary tuberculosis in
643 children: a case of tubercular otitis media. J Clin Microbiol 53:336–8.
- 644