

1 **Title**

2 Blood transcriptional biomarkers of acute viral infection for detection of pre-symptomatic SARS-CoV-2 infection.

3 **Authors**

4 Rishi K. Gupta^{1,2†}, Joshua Rosenheim^{2†}, Lucy C. Bell^{2†}, Aneesh Chandran², Jose A. Guerra-Assuncao², Gabriele
5 Pollara², Matthew Whelan², Jessica Artico³, George Joy³, Hibba Kurdi³, Daniel M. Altmann⁴, Rosemary Boyton⁵,
6 Mala Maini², Aine McKnight⁶, Jonathan Lambourne⁷, Teresa Cutino-moguel⁸, Charlotte Manisty^{3,9}, Thomas A.
7 Treibel^{3,9}, James C Moon^{3,9}, Benjamin Chain² and Mahdad Noursadeghi^{2*} on behalf of the COVIDsortium
8 Investigators.

9 **Affiliations**

10 ¹Institute of Global Health, University College London, London, UK

11 ²Division of Infection and Immunity, University College London, London, UK

12 ³Barts Heart Centre, St Bartholomew's Hospital, Barts Health NHS Trust, London, UK, London, UK

13 ⁴Department of Immunology and Inflammation, Imperial College London, London, UK

14 ⁵Lung Division, Royal Brompton & Harefield NHS Foundation Trust, London, UK

15 ⁶Blizard Institute, Barts and the London School of Medicine and Dentistry, Queen Mary University of London,
16 London, UK.

17 ⁷Department of Infection, Barts Health NHS Trust, London, UK

18 ⁸Department of Virology, Barts Health NHS Trust, London, UK

19 ⁹Institute of Cardiovascular Sciences, University College London, London, UK

20 *To whom correspondence should be addressed: Division of Infection & Immunity, Cruciform Building, University
21 College London, London WC1E 6BT, UK. Email: m.noursadeghi@ucl.ac.uk ([https://orcid.org/0000-0002-4774-](https://orcid.org/0000-0002-4774-0853)
22 0853)

23 †Contributed equally.

24 **Abstract**

25 We hypothesised that host-response biomarkers of viral infections may contribute to early identification of SARS-
26 CoV-2 infected individuals, critical to breaking chains of transmission. We identified 20 candidate blood
27 transcriptomic signatures of viral infection by systematic review and evaluated their ability to detect SARS-CoV-2
28 infection, compared to the gold-standard of virus PCR tests, among a prospective cohort of 400 hospital staff
29 subjected to weekly testing when fit to attend work. The transcriptional signatures had limited overlap, but were
30 mostly co-correlated as components of type 1 interferon responses. We reconstructed each signature score in
31 blood RNA sequencing data from 41 individuals over sequential weeks spanning a first positive SARS-CoV-2
32 PCR, and after 6-month convalescence. A single blood transcript for IFI27 provided the highest accuracy for
33 discriminating individuals at the time of their first positive viral PCR result from uninfected controls, with area under
34 the receiver operating characteristic curve (AUROC) of 0.95 (95% confidence interval 0.91–0.99), sensitivity 0.84
35 (0.7–0.93) and specificity 0.95 (0.85–0.98) at a predefined test threshold. The test performed equally well in
36 individuals with and without symptoms, correlated with viral load, and identified incident infections one week before
37 the first positive viral PCR with sensitivity 0.4 (0.17–0.69) and specificity 0.95 (0.85–0.98). Our findings strongly
38 support further urgent evaluation and development of blood IFI27 transcripts as a biomarker for early phase SARS-
39 CoV-2 infection, for screening individuals such as contacts of index cases, in order to facilitate early case isolation
40 and early antiviral treatments as they emerge.

41 **Introduction**

42 Rapid and accurate testing is central to effective public health responses to COVID-19. Infectivity, measured by
43 upper respiratory tract SARS-CoV-2 titres, peaks during the first week of illness (1). Early case detection followed
44 by rapid isolation of index cases, alongside contact tracing and quarantine, are therefore key interventions to
45 interrupt onward transmission. As a proportion of individuals with SARS-CoV-2 shed virus while asymptomatic or
46 pauci-symptomatic (2, 3), there is also global interest in screening tests for at-risk individuals who do not fulfil case
47 definition criteria and in mass testing for early case detection among the general population (4).

48 Effective screening tests must be accurate and reliable (5). However, current tools such as lateral flow assays
49 (LFAs) for SARS-CoV-2 antigens appear to have inadequate sensitivity to effectively rule out active infection and
50 may have limited value for contact and general population screening (6). Reverse-transcriptase PCR (RT-PCR)
51 tests, which identify viral RNA, are the current gold standard for diagnosis of SARS-CoV-2 infection but pose
52 different challenges including test speed and the requirement of a skilled laboratory operator (7). LAMP (loop-
53 mediated isothermal amplification) assays improve on RT-PCR timings but with an associated reduction in
54 sensitivity (8). All current viral detection tests rely on swabbing of nasopharyngeal and/or oropharyngeal mucosa,
55 the effectiveness of which is operator-dependent and prone to sampling variability. While positive SARS-CoV-2
56 test results are useful in clinical management and infection control settings, all available tests have false negative
57 rates which impact on interpretation, particularly in the context of high pre-test probability in high transmission
58 settings (9).

59 There is therefore a clear need to expand the portfolio of tests available for identification of SARS-CoV-2 infection,
60 for both screening and diagnostic purposes. Measurement of the host response, as opposed to viral targets, is
61 one potential diagnostic strategy. Numerous studies have demonstrated whole-blood transcriptional perturbation
62 during other acute viral infections (10–13). A range of blood transcriptomic signatures have therefore been
63 proposed as candidate diagnostic biomarkers for purposes including discrimination of viral from bacterial infection
64 or no infection (10–21), diagnosis of pre-symptomatic viral infection in known contacts (22), diagnosis of specific
65 viral infections (23, 24), or prognostication of severity (25). These signatures have not yet been evaluated for early
66 diagnosis of pre-symptomatic or mild SARS-CoV-2 infection. We present a systematic evaluation of the potential
67 for existing candidate whole-blood transcriptomic signatures of viral infection to predict nasopharyngeal SARS-
68 CoV-2 PCR positivity in healthcare workers undergoing weekly testing with paired blood RNA sampling.

69 **Results**

70 ***Overview of study cohort***

71 We included a total of 169 blood RNA samples from 96 participants in a nested case-control study (Fig. S1) derived
72 from an observational healthcare worker cohort (26–28). Of these, 114 samples (including 16 convalescent
73 samples collected 6 months after infection) were obtained from 41 incident cases with SARS-CoV-2 infection, and
74 55 samples from uninfected controls. Participant baseline characteristics are shown in Table S1. 32/41 individuals
75 with incident virus PCR positive infection denied any disease defining symptoms at the time of their positive PCR
76 test, whilst 9/41 described one or more of cough, fever, or anosmia. A further 22 individuals developed symptoms
77 during subsequent follow up.

78 ***Overview of candidate RNA signatures for viral infection***

79 Our systematic literature search identified 1150 titles and abstracts; 61 studies were shortlisted for full-text review.
80 A total of 18 studies, describing 20 distinct transcriptional signatures for viral infection, met the eligibility criteria for
81 inclusion in the final analysis (Table 1 and Fig. S2). Signatures comprised between 1 and 48 component genes
82 and were discovered in a range of populations including children and adults with acute viral infections, and adults
83 experimentally challenged with viruses including influenza, respiratory syncytial virus (RSV) and rhinovirus. The
84 majority of signatures (12/20) were discovered with the objective of discriminating viral infection from bacterial or
85 other inflammatory presentations (10–21). Three aimed to discriminate viral infection from healthy individuals (29,
86 30) and two were discovered with a specific objective of diagnosing influenza infection (23, 24). One signature
87 aimed to predict the severity of RSV infection in children (25). One study evaluated a pre-existing signature with
88 the objective of identifying pre-symptomatic viral infection in individuals who were close contacts of index cases
89 with acute viral respiratory tract infections (22).

90 In most cases there was little overlap between the constituent genes in each signature, but most signatures
91 showed moderate to strong correlation, which was only partly explained by overlapping constituent genes
92 (Fig. 1A–C). Bioinformatic analysis of the integrated list of constituent genes to identify upstream regulators using
93 Ingenuity Pathway Analysis was consistent with type 1 interferon regulation of these genes to explain the strong
94 correlation between signatures despite limited overlap of their constituents.

95 ***Diagnostic accuracy of RNA signatures for SARS-CoV-2 infection***

96 Among all the signatures, the transcript for Interferon Alpha Inducible Protein 27 (IFI27) by itself provided the best
97 discrimination of contemporaneous SARS-CoV-2 infection by nasopharyngeal PCR, compared to uninfected
98 controls, achieving an AUROC of 0.95 (95% confidence interval 0.91–0.99). Using a pre-specified Z2 cut-off based
99 on two standard deviations above the mean of the uninfected control samples, IFI27 had a sensitivity of 0.84
100 (0.70–0.93) and specificity of 0.95 (0.85–0.98). Three other candidate signatures (Sweeney7, Zaas48 and
101 Pennisi2) had statistically equivalent accuracy to IFI27 using paired DeLong tests (Table 2). Fig. S3 shows
102 constituent genes for these four best performing signatures; only one of these (Pennisi2) did not include IFI27.
103 Exclusion of participants with contemporaneous case-defining symptoms at the time of SARS-CoV-2 infection
104 (n=9) had no significant impact on the primary analysis (Table S2). Scores for each of the four best performing
105 signatures were inversely correlated with SARS-CoV-2 RT-PCR cycle thresholds, also independent of symptoms,
106 suggesting that higher viral loads were associated with higher signature scores (Figure 2B; Spearman rank
107 correlation coefficients –0.61 to –0.69).

108 Longitudinal expression of the four best performing signatures peaked at the week of first virus PCR-positivity and
109 had normalised at the point of convalescent sampling (Fig. 2). Importantly, however, measurements in the week
110 preceding the first positive virus PCR were higher than uninfected controls and convalescent samples. AUROCs
111 for discrimination between samples taken in the week prior to first SARS-CoV-2 detection and uninfected controls
112 revealed statistically significant discrimination, but were lower than those for contemporaneous virus PCR positivity
113 (Table S3). For illustration, IFI27 predicted infection one week before a positive virus PCR test with an AUROC of
114 0.79 (0.6–0.98). At a Z2 cut-off this achieved sensitivity of 0.4 (0.17–0.69) and specificity of 0.95 (0.85–0.98).

115 ***Discussion***

116 To our knowledge, this is the first evaluation of host transcriptomic signatures for detection of pre-symptomatic
117 SARS-CoV-2 infection. Using a longitudinal blood transcriptomic dataset prospectively collected from London
118 healthcare workers during the first wave of the COVID-19 pandemic, we systematically compared the diagnostic
119 accuracy of 20 candidate transcriptional signatures originally discovered in a wide range of viral infection cohorts.
120 We found that four candidate signatures had high accuracy (AUROCs 0.91–0.95) for discriminating individuals
121 with acute contemporaneous SARS-CoV-2 infection from uninfected controls. Three of the four signatures

122 contained the interferon-stimulated gene *IFI27*, which was by itself the top-performing biomarker, originally
123 discovered in a paediatric cohort (30) to discriminate RSV infections from controls.

124 The candidate signatures evaluated in the present study are collectively associated with type 1 IFN responses,
125 which are a canonical feature of antiviral host defences. The importance of this response in SARS-CoV-2 infection
126 is highlighted by the association of severe COVID-19 with both of loss-of-function genetic variation in various
127 components of type 1 IFN pathways and with anti-type 1 IFN antibodies (31, 32). *IFI27* is best characterised for
128 its functional role in type 1 IFN mediated apoptosis as a component of anti-tumour effects of IFNs (33). Differential
129 regulation of IFN inducible genes might explain why expression of *IFI27* transcripts outperforms other type 1 IFN
130 signatures and merits investigation in future work to evaluate its significance in the anti-viral response.

131 A key feature of our study is that all participants self-declared as fit to work when attending study visits, including
132 at the time of their first positive SARS-CoV-2 PCR test, when most were asymptomatic. We also found detectable
133 expression of the signatures in blood transcriptomes collected at the study visit one week prior to virus PCR test
134 positivity among a subset of participants. Our data therefore demonstrate that measurable type 1 IFN-stimulated
135 responses to SARS-CoV-2 precede the onset of symptoms, and in some individuals may predate detectable viral
136 RNA on RT-PCR testing. We propose that novel diagnostic tests that detect transcripts (or associated protein
137 targets) from the top-performing candidate signatures could be valuable tools in the rapid detection and isolation
138 of individuals in the very earliest stages of pre-clinical infection. Importantly, these signatures also correlated with
139 viral load independently of symptoms, indicating that they have strong potential to identify the most infectious
140 individuals, critical to breaking chains of transmission.

141 A key strength of our study was the weekly longitudinal follow-up of study participants which enabled detailed
142 characterisation of the study cohort, including contemporaneous capture of blood RNA samples at the point of
143 SARS-CoV-2 PCR positivity in pre-symptomatic and asymptomatic infection. In addition, we performed a
144 comprehensive systematic literature search to identify candidate blood transcriptional signatures for viral infection.
145 This enabled direct head-to-head assessments of their diagnostic accuracy for SARS-CoV-2 infection and will
146 provide a framework for future systematic evaluations of blood transcriptional biomarkers for viral infections.

147 Our findings focus on early pre-symptomatic infection and may not be generalisable in moderate to severe
148 COVID-19. In addition, we have not sought to evaluate discrimination between SARS-CoV-2 and other acute viral
149 infections. In view of their discovery in a range of viral infections, we expect these signatures to serve as

150 non-specific biomarkers of acute viral infection. Nonetheless, their sensitivity for detecting pre-symptomatic
151 infection offers potential clinical utility for screening contacts of index cases of SARS-CoV-2 in order to inform
152 infection control management, and stratify the need for confirmatory viral PCR testing.

153 In summary, we have shown that a single transcript (IFI27) detects SARS-CoV-2 infection with high accuracy. If
154 translated to a near-patient diagnostic test (34, 35), this transcript could have significant clinical utility by facilitating
155 early case detection.

156 **Materials and Methods**

157 ***Ethical approval***

158 The study was approved by a UK Research Ethics Committee (South Central - Oxford A Research Ethics
159 Committee, reference 20/SC/0149). All participants provided written informed consent.

160 ***Study design***

161 We undertook a case-control study nested within our COVIDsortium health care worker cohort. Participant
162 screening, study design, sample collection, and sample processing have been described in detail previously (26–
163 28) and the study is registered at ClinicalTrials.gov (NCT04318314). Briefly, healthcare workers were recruited at
164 St Bartholomew's Hospital, London, UK in the week of lockdown in the United Kingdom (between 23rd and 31st
165 March 2020). Participants underwent weekly evaluation using a questionnaire and biological sample collection
166 (including serological assays) for up to 16 weeks when fit to attend work at each visit, with further follow up samples
167 collected at 6 months.

168 Participants with available blood RNA samples who had PCR-confirmed SARS-CoV-2 infection (Roche cobas®
169 diagnostic test platform) at any time point were included as 'cases'. A subset of consecutively recruited participants
170 without evidence of SARS-CoV-2 infection on nasopharyngeal swabs and who remained seronegative by both
171 Euroimmun anti-S1 spike protein and Roche anti-nucleocapsid protein throughout follow-up were included as
172 uninfected controls.

173 ***Systematic search for candidate transcriptional signatures***

174 We performed a systematic literature search of peer-reviewed publications in order to identify concise blood
175 transcriptional signatures discovered or applied with a primary objective of diagnosis or assessment of severity of
176 viral infection from blood or PBMC samples. We searched Medline on 12/10/2020 using comprehensive MeSH

177 and key word terms for “viral infection”, “transcriptome”, “biomarker” and “blood” (full search strategy shown in
178 Table S4). Additional studies were identified in reference lists and from expert consultation. Titles and abstracts
179 were initially screened by two independent reviewers; full-text review was performed for shortlisted articles to
180 determine eligibility and conflicts were resolved through discussion and arbitration by a third reviewer where
181 required. We focused on ‘concise’ signatures that might be more amenable to translation to diagnostic tests and
182 defined this as any signature discovered using a defined approach to feature selection to reduce the number of
183 constituent genes, as previously (36). We required that gene names that comprised the signature were publicly
184 available, along with the corresponding signature equation or model coefficients, and that the signature must be
185 validated in at least one independent test or validation set in order to prioritise signatures discovered from higher
186 quality studies. Where multiple signatures were discovered for the same intended purpose and from the same
187 discovery cohort, we included the signature with highest discrimination (as defined by the AUROC) in the validation
188 data, or the signature with fewest number of genes where accuracy was equivalent.

189 For each signature that met our eligibility criteria, we extracted constituent genes, modelling approaches and
190 coefficients to enable independent reconstruction of signature scores. Extraction was performed by a single
191 reviewer and was verified by a second reviewer.

192 ***Blood RNA sequencing***

193 For ‘cases’, we included all available RNA samples, including convalescent samples at week 24 of follow-up for a
194 subset of participants. For uninfected controls, we included baseline samples only. Genome wide mRNA
195 sequencing was performed as previously described (37), resulting in a median of 26 million (range, 19.8–32.4
196 million) 41 bp paired-end reads per sample. RNAseq data were mapped to the reference transcriptome (Ensembl
197 Human GRCh38 release 100) using Kallisto (38). The transcript-level output counts and transcripts per million
198 (TPM) values were summed on gene level and annotated with Ensembl gene ID, gene name, and gene biotype
199 using the R/Bioconductor packages tximport and BioMart (39, 40).

200 ***Data analysis***

201 For each eligible signature, we reconstructed signature scores as per the original authors’ descriptions. For logistic
202 and probit regression models, we calculated scores on the linear predictor scale by summing the expression of
203 each constituent gene multiplied by its coefficient. Scores for each signature were standardised to Z scores using
204 the mean and standard deviation among the uninfected control population. Scores that were designed to decrease

205 in viral infection were multiplied by -1 in order to ensure that higher scores should be associated with higher risk
206 of viral infection across all candidate signatures.

207 The primary outcome was the AUROC for discriminating participants with PCR-confirmed SARS-CoV-2 infection
208 during their first week of PCR positivity, from uninfected control samples. The secondary outcome was the AUROC
209 for discriminating participants with PCR-confirmed SARS-CoV-2 infections in the week prior to first PCR positivity,
210 from uninfected control samples. We calculated corresponding sensitivities and specificities for each signature for
211 the primary and secondary outcomes using pre-specified cut-offs based on two standard deviations above the
212 mean of the uninfected controls, as previously (36). In order to identify the subset of best performing signatures,
213 we performed pairwise DeLong tests to the signature with the highest AUROC for the primary outcome (or most
214 parsimonious in the event of equal performance), with adjustment for multiple testing using a Benjamini-Hochberg
215 correction (41). Signatures were considered to have statistically inferior accuracy to the best performing signature
216 if adjusted $p < 0.05$. We also performed a sensitivity analysis for the primary outcome, excluding participants with
217 positive SARS-CoV-2 swabs who reported contemporaneous case-defining symptoms at the time of sampling.

218 Upstream analysis of transcriptional regulation of the constituent genes in the candidate signatures was performed
219 using Ingenuity Pathway Analysis (Qiagen, Venlo, The Netherlands) and visualized as network diagrams in Gephi
220 v0.9.2, depicting all statistically overrepresented molecules predicted to be upstream >2 target genes, as
221 previously (36). We evaluated pairwise Spearman rank and Jaccard indices between each candidate signature in
222 order to quantify correlations and proportions of intersecting genes between signatures.

223 ***Role of the funding source***

224 The funder had no role in study design, data collection, data analysis, data interpretation, writing of the report, or
225 decision to submit for publication. The corresponding authors had full access to all the data in the study and had
226 final responsibility for the decision to submit for publication.

227 **Supplementary Materials**

228 Fig. S1. CONSORT (Consolidated Standards of Reporting Trials) flow diagram.

229 Fig. S2. PRISMA (Preferred Reporting Items for Systematic Reviews and Meta-Analyses) flow-chart of systematic
230 review process.

231 Fig S3. Constituent genes of best-performing RNA signatures.

232 Table S1. Search strategy for systematic Medline search.

233 Table S2. Validation metrics of whole-blood RNA signatures at week of first week of PCR-positivity.

234 Table S3. Validation metrics of whole-blood RNA signatures at week prior to first week of PCR-positivity.

235 Table S4. Baseline characteristics of the study cohort.

236 Table S5. Full list of COVIDsortium investigators.

237 **References and Notes:**

238 1. M. Cevik, M. Tate, O. Lloyd, A. E. Maraolo, J. Schafers, A. Ho, SARS-CoV-2, SARS-CoV, and MERS-CoV viral
239 load dynamics, duration of viral shedding, and infectiousness: a systematic review and meta-analysis, *The Lancet*
240 *Microbe* **2** (2020), doi:10.1016/S2666-5247(20)30172-5.

241 2. M. R. Kasper, J. R. Geibe, C. L. Sears, A. J. Riegodedios, T. Luse, A. M. V. Thun, M. B. McGinnis, N. Olson,
242 D. Houskamp, R. Fenequito, T. H. Burgess, A. W. Armstrong, G. DeLong, R. J. Hawkins, B. L. Gillingham, An
243 Outbreak of Covid-19 on an Aircraft Carrier, *New England Journal of Medicine* **383** (2020),
244 doi:10.1056/NEJMoa2019375.

245 3. A. A. Sayampanathan, C. S. Heng, P. H. Pin, J. Pang, T. Y. Leong, V. J. Lee, Infectivity of asymptomatic versus
246 symptomatic COVID-19, *The Lancet* **397** (2020), doi:10.1016/S0140-6736(20)32651-9.

247 4. T. Burki, Mass testing for COVID-19, *The Lancet Microbe* **1**, e317 (2020).

248 5. M. J. Dobrow, V. Hagens, R. Chafe, T. Sullivan, L. Rabeneck, Consolidated principles for screening based on
249 a systematic review and consensus process, *CMAJ: Canadian Medical Association Journal* **190**, E422 (2018).

250 6. J. J. Deeks, A. E. Raffle, Lateral flow tests cannot rule out SARS-CoV-2 infection, *BMJ* **371** (2020),
251 doi:10.1136/bmj.m4787.

252 7. N. Younes, D. W. Al-Sadeq, H. AL-Jighefee, S. Younes, O. Al-Jamal, H. I. Daas, Hadi. M. Yassine, G. K.
253 Nasrallah, Challenges in Laboratory Diagnosis of the Novel Coronavirus SARS-CoV-2, *Viruses* **12** (2020),
254 doi:10.3390/v12060582.

- 255 8. M. Mustafa Hellou, A. Górška, F. Mazzaferri, E. Cremonini, E. Gentilotti, P. De Nardo, I. Poran, M. M. Leeflang,
256 E. Tacconelli, M. Paul, Nucleic acid amplification tests on respiratory samples for the diagnosis of coronavirus
257 infections: a systematic review and meta-analysis, *Clin Microbiol Infect* (2020), doi:10.1016/j.cmi.2020.11.002.
- 258 9. J. Watson, P. F. Whiting, J. E. Brush, Interpreting a covid-19 test result, *BMJ* **369** (2020),
259 doi:10.1136/bmj.m1808.
- 260 10. J. A. Herberg, M. Kaforou, V. J. Wright, H. Shailes, H. Eleftherohorinou, C. J. Hoggart, M. Cebeý-López, M. J.
261 Carter, V. A. Janes, S. Gormley, C. Shimizu, A. H. Tremoulet, A. M. Barendregt, A. Salas, J. Kanegaye, A. J.
262 Pollard, S. N. Faust, S. Patel, T. Kuijpers, F. Martín-Torres, J. C. Burns, L. J. M. Coin, M. Levin, IRIS Consortium,
263 Diagnostic Test Accuracy of a 2-Transcript Host RNA Signature for Discriminating Bacterial vs Viral Infection in
264 Febrile Children, *JAMA* **316**, 835–845 (2016).
- 265 11. E. C. Lydon, R. Henao, T. W. Burke, M. Aydin, B. P. Nicholson, S. W. Glickman, V. G. Fowler, E. B.
266 Quackenbush, C. B. Cairns, S. F. Kingsmore, A. K. Jaehne, E. P. Rivers, R. J. Langley, E. Petzold, E. R. Ko, M.
267 T. McClain, G. S. Ginsburg, C. W. Woods, E. L. Tsalik, Validation of a host response test to distinguish bacterial
268 and viral respiratory infection, *EBioMedicine* **48**, 453–461 (2019).
- 269 12. T. E. Sweeney, H. R. Wong, P. Khatri, Robust classification of bacterial and viral infections via integrated host
270 gene expression diagnostics, *Science Translational Medicine* **8**, 346ra91-346ra91 (2016).
- 271 13. D. Sampson, T. D. Yager, B. Fox, L. Shallcross, L. McHugh, T. Seldon, A. Rapisarda, R. A. Hendriks, R. B.
272 Brandon, K. Navalkar, N. Simpson, S. Stafford, E. Gil, C. Venturini, E. Tsaliki, J. Roe, B. Chain, M. Noursadeghi,
273 Blood transcriptomic discrimination of bacterial and viral infections in the emergency department: a multi-cohort
274 observational validation study, *BMC Medicine* **18**, 185 (2020).
- 275 14. A. Gómez-Carballa, M. Cebeý-López, J. Pardo-Seco, R. Barral-Arca, I. Rivero-Calle, S. Pischedda, M. J.
276 Currás-Tuala, J. Gómez-Rial, F. Barros, F. Martín-Torres, A. Salas, A qPCR expression assay of IFI44L gene
277 differentiates viral from bacterial infections in febrile children, *Sci Rep* **9**, 1–12 (2019).
- 278 15. R. Lopez, R. Wang, G. Seelig, A molecular multi-gene classifier for disease diagnostics, *Nature Chem* **10**,
279 746–754 (2018).

- 280 16. D. L. Sampson, B. A. Fox, T. D. Yager, S. Bhide, S. Cermelli, L. C. McHugh, T. A. Seldon, R. A. Brandon, E.
281 Sullivan, J. J. Zimmerman, M. Noursadeghi, R. B. Brandon, A Four-Biomarker Blood Signature Discriminates
282 Systemic Inflammation Due to Viral Infection Versus Other Etiologies, *Sci Rep* **7**, 1–17 (2017).
- 283 17. T. E. Sweeney, A. Shidham, H. R. Wong, P. Khatri, A comprehensive time-course–based multicohort analysis
284 of sepsis and sterile inflammation reveals a robust diagnostic gene set, *Science Translational Medicine* **7**, 287ra71-
285 287ra71 (2015).
- 286 18. S. Trouillet-Assant, S. Viel, A. Ouziel, L. Boisselier, P. Rebaud, R. Basmaci, N. Droz, A. Belot, S. Pons, K.
287 Brengel-Pesce, Y. Gillet, E. Javouhey, A. S. Group, M. Mommert, A. Guichard, F. Bartolo, L. Generenaz, A.
288 Pachot, C. Capella, L. Hees, E. Mezgueldi, C. Toumi, C. Bouchiat-Sarabi, J. Casalegno, A. Portefaix, R. D. de
289 Cambronne, M. Perret, Type I Interferon in Children with Viral or Bacterial Infections, *Clin Chem* **66**, 802–808
290 (2020).
- 291 19. E. L. Tsalik, R. Henao, M. Nichols, T. Burke, E. R. Ko, M. T. McClain, L. L. Hudson, A. Mazur, D. H. Freeman,
292 T. Veldman, R. J. Langley, E. B. Quackenbush, S. W. Glickman, C. B. Cairns, A. K. Jaehne, E. P. Rivers, R. M.
293 Otero, A. K. Zaas, S. F. Kingsmore, J. Lucas, V. G. Fowler, L. Carin, G. S. Ginsburg, C. W. Woods, Host gene
294 expression classifiers diagnose acute respiratory illness etiology, *Science Translational Medicine* **8**, 322ra11-
295 322ra11 (2016).
- 296 20. I. Pennisi, J. Rodriguez-Manzano, A. Moniri, M. Kaforou, J. A. Herberg, M. Levin, P. Georgiou, Translation of
297 a host blood RNA Signature distinguishing bacterial from viral infection into a platform suitable for development as
298 a point-of-care test, *JAMA Pediatrics* (2021), doi:doi:10.1001/jamapediatrics.2020.5227.
- 299 21. A. K. Zaas, T. Burke, M. Chen, M. McClain, B. Nicholson, T. Veldman, E. L. Tsalik, V. Fowler, E. P. Rivers, R.
300 Otero, S. F. Kingsmore, D. Voora, J. Lucas, A. O. Hero, L. Carin, C. W. Woods, G. S. Ginsburg, A Host-Based
301 RT-PCR Gene Expression Signature to Identify Acute Respiratory Viral Infection, *Science Translational Medicine*
302 **5**, 203ra126-203ra126 (2013).
- 303 22. M. T. McClain, F. J. Constantine, B. P. Nicholson, M. Nichols, T. W. Burke, R. Henao, D. C. Jones, L. L.
304 Hudson, L. B. Jagers, T. Veldman, A. Mazur, L. P. Park, S. Suchindran, E. L. Tsalik, G. S. Ginsburg, C. W.

- 305 Woods, A blood-based host gene expression assay for early detection of respiratory viral infection: an index-
306 cluster prospective cohort study, *The Lancet Infectious Diseases* **0** (2020), doi:10.1016/S1473-3099(20)30486-2.
- 307 23. M. Andres-Terre, H. M. McGuire, Y. Pouliot, E. Bongen, T. E. Sweeney, C. M. Tato, P. Khatri, Integrated, Multi-
308 cohort Analysis Identifies Conserved Transcriptional Signatures across Multiple Respiratory Viruses, *Immunity* **43**,
309 1199 (2015).
- 310 24. S. E. Henrickson, S. Manne, D. V. Dolfi, K. D. Mansfield, K. Parkhouse, R. D. Mistry, E. R. Alpern, S. E.
311 Hensley, K. E. Sullivan, S. E. Coffin, E. J. Wherry, Genomic Circuitry Underlying Immunological Response to
312 Pediatric Acute Respiratory Infection, *Cell Reports* **22**, 411–426 (2018).
- 313 25. H. K. Brand, I. M. L. Ahout, D. de Ridder, A. van Diepen, Y. Li, M. Zaalberg, A. Andeweg, N. Roeleveld, R. de
314 Groot, A. Warris, P. W. M. Hermans, G. Ferwerda, F. J. T. Staal, Olfactomedin 4 Serves as a Marker for Disease
315 Severity in Pediatric Respiratory Syncytial Virus (RSV) Infection, *PLOS ONE* **10**, e0131927 (2015).
- 316 26. J. B. Augusto, K. Menacho, M. Andiapen, R. Bowles, M. Burton, S. Welch, A. N. Bhuva, A. Seraphim, C. Pade,
317 G. Joy, M. Jensen, R. H. Davies, G. Captur, M. Fontana, H. Montgomery, B. O'Brien, A. D. Hingorani, T. Cutino-
318 Moguel, Á. McKnight, H. Abbass, M. Alfarihi, Z. Alldis, G. L. Baca, A. Boulter, O. V. Bracken, N. Bullock, N.
319 Champion, C. Chan, X. Couto-Parada, K. Dieobi-Anene, K. Feehan, G. Figtree, M. C. Figtree, M. Finlay, N.
320 Forooghi, J. M. Gibbons, P. Griffiths, M. Hamblin, L. Howes, I. Itua, M. Jones, V. Jardim, V. Kapil, W.-Y. J. Lee, V.
321 Mandadapu, C. Mfuko, O. Mitchelmore, S. Palma, K. Patel, S. E. Petersen, B. Piniera, R. Raine, A. Rapala, A.
322 Richards, G. Sambile, J. C. de Sousa, M. Sugimoto, G. D. Thornton, J. Artico, D. Zahedi, R. Parker, M. Robathan,
323 L. M. Hickling, N. Ntusi, A. Semper, T. Brooks, J. Jones, A. Tucker, J. Veerapen, M. Vijayakumar, T. Wodehouse,
324 L. Wynne, T. A. Treibel, M. Noursadeghi, C. Manisty, J. C. Moon, Healthcare Workers Bioresource: Study outline
325 and baseline characteristics of a prospective healthcare worker cohort to study immune protection and
326 pathogenesis in COVID-19, *Wellcome Open Research* **5**, 179 (2020).
- 327 27. T. A. Treibel, C. Manisty, M. Burton, Á. McKnight, J. Lambourne, J. B. Augusto, X. Couto-Parada, T. Cutino-
328 Moguel, M. Noursadeghi, J. C. Moon, COVID-19: PCR screening of asymptomatic health-care workers at London
329 hospital, *The Lancet* **395**, 1608–1610 (2020).

- 330 28. C. J. Reynolds, L. Swadling, J. M. Gibbons, C. Pade, M. P. Jensen, M. O. Diniz, N. M. Schmidt, D. K. Butler,
331 O. E. Amin, S. N. L. Bailey, S. M. Murray, F. P. Pieper, S. Taylor, J. Jones, M. Jones, W.-Y. J. Lee, J. Rosenheim,
332 A. Chandran, G. Joy, C. D. Genova, N. Temperton, J. Lambourne, T. Cutino-Moguel, M. Andiapen, M. Fontana,
333 A. Smit, A. Semper, B. O'Brien, B. Chain, T. Brooks, C. Manisty, T. Treibel, J. C. Moon, Covid. Investigators\$, M.
334 Noursadeghi, Covid. immune correlates Network\$, D. M. Altmann, M. K. Maini, Á. McKnight, R. J. Boyton,
335 Discordant neutralizing antibody and T cell responses in asymptomatic and mild SARS-CoV-2 infection, *Science*
336 *Immunology* **5** (2020), doi:10.1126/sciimmunol.abf3698.
- 337 29. A. Roers, H. K. Hochkeppel, M. A. Horisberger, A. Hovanessian, O. Haller, MxA Gene Expression after Live
338 Virus Vaccination: A Sensitive Marker for Endogenous Type I Interferon, *J Infect Dis* **169**, 807–813 (1994).
- 339 30. J. Yu, D. R. Peterson, A. M. Baran, S. Bhattacharya, T. N. Wylie, A. R. Falsey, T. J. Mariani, G. A. Storch,
340 Host Gene Expression in Nose and Blood for the Diagnosis of Viral Respiratory Infection, *J Infect Dis* **219**, 1151–
341 1161 (2019).
- 342 31. E. Pairo-Castineira, S. Clohisey, L. Klaric, A. D. Bretherick, K. Rawlik, D. Pasko, S. Walker, N. Parkinson, M.
343 H. Fourman, C. D. Russell, J. Furniss, A. Richmond, E. Gountouna, N. Wrobel, D. Harrison, B. Wang, Y. Wu, A.
344 Meynert, F. Griffiths, W. Oosthuyzen, A. Kousathanas, L. Moutsianas, Z. Yang, R. Zhai, C. Zheng, G. Grimes, R.
345 Beale, J. Millar, B. Shih, S. Keating, M. Zechner, C. Haley, D. J. Porteous, C. Hayward, J. Yang, J. Knight, C.
346 Summers, M. Shankar-Hari, P. Klenerman, L. Turtle, A. Ho, S. C. Moore, C. Hinds, P. Horby, A. Nichol, D. Maslove,
347 L. Ling, D. McAuley, H. Montgomery, T. Walsh, A. Pereira, A. Renieri, X. Shen, C. P. Ponting, A. Fawkes, A.
348 Tenesa, M. Caulfield, R. Scott, K. Rowan, L. Murphy, P. J. M. Openshaw, Malcolm G. Semple, A. Law, V. Vitart,
349 J. F. Wilson, J. K. Baillie, Genetic mechanisms of critical illness in Covid-19, *Nature* , 1–1 (2020).
- 350 32. Q. Zhang, P. Bastard, Z. Liu, J. L. Pen, M. Moncada-Velez, J. Chen, M. Ogishi, I. K. D. Sabli, S. Hodeib, C.
351 Korol, J. Rosain, K. Bilguvar, J. Ye, A. Bolze, B. Bigio, R. Yang, A. A. Arias, Q. Zhou, Y. Zhang, F. Onodi, S.
352 Korniotis, L. Karpf, Q. Philippot, M. Chbihi, L. Bonnet-Madin, K. Dorgham, N. Smith, W. M. Schneider, B. S.
353 Razooky, H.-H. Hoffmann, E. Michailidis, L. Moens, J. E. Han, L. Lorenzo, L. Bizien, P. Meade, A.-L. Neehus, A.
354 C. Ugurbil, A. Corneau, G. Kerner, P. Zhang, F. Rapaport, Y. Seeleuthner, J. Manry, C. Masson, Y. Schmitt, A.
355 Schlüter, T. L. Voyer, T. Khan, J. Li, J. Fellay, L. Roussel, M. Shahrooei, M. F. Alosaimi, D. Mansouri, H. Al-Saud,
356 F. Al-Mulla, F. Almourfi, S. Z. Al-Muhsen, F. Alsohime, S. A. Turki, R. Hasanato, D. van de Beek, A. Biondi, L. R.

- 357 Bettini, M. D'Angio', P. Bonfanti, L. Imberti, A. Sottini, S. Paghera, E. Quiros-Roldan, C. Rossi, A. J. Oler, M. F.
358 Tompkins, C. Alba, I. Vandernoot, J.-C. Goffard, G. Smits, I. Migeotte, F. Haerynck, P. Soler-Palacin, A. Martin-
359 Nalda, R. Colobran, P.-E. Morange, S. Keles, F. Çölkesen, T. Ozcelik, K. K. Yasar, S. Senoglu, Ş. N. Karabela,
360 C. Rodríguez-Gallego, G. Novelli, S. Hraiech, Y. Tandjaoui-Lambiotte, X. Duval, C. Laouénan, C.-S. Clinicians†,
361 C. Clinicians†, I. C. Group†, F. C. C. S. Group†, C.-C. Cohort†, A. U. C.-19 Biobank†, C. H. G. Effort†, N.-U. C. I.
362 Group†, A. L. Snow, C. L. Dalgard, J. D. Milner, D. C. Vinh, T. H. Mogensen, N. Marr, A. N. Spaan, B. Boisson, S.
363 Boisson-Dupuis, J. Bustamante, A. Puel, M. J. Ciancanelli, I. Meyts, T. Maniatis, V. Soumelis, A. Amara, M.
364 Nussenzweig, A. García-Sastre, F. Krammer, A. Pujol, D. Duffy, R. P. Lifton, S.-Y. Zhang, G. Gorochov, V. Béziat,
365 E. Jouanguy, V. Sancho-Shimizu, C. M. Rice, L. Abel, L. D. Notarangelo, A. Cobat, H. C. Su, J.-L. Casanova,
366 Inborn errors of type I IFN immunity in patients with life-threatening COVID-19, *Science* **370** (2020),
367 doi:10.1126/science.abd4570.
- 368 33. S. Rosebeck, D. W. Leaman, Mitochondrial localization and pro-apoptotic effects of the interferon-inducible
369 protein ISG12a, *Apoptosis* **13**, 562–572 (2008).
- 370 34. E. L. Tsalik, R. Henao, M. Aydin, C. Bullard, J. Montgomery, J. Nawrocki, M. Deneris, C. Gritzen, J. Jones, R.
371 Crisp, M. T. McClain, T. Burke, G. S. Ginsburg, A. Hemmert, C. W. Woods, 2012. FilmArray® Measurement of
372 Host Response Signatures Rapidly Discriminates Viral, Bacterial, and Non-infectious Etiologies of Illness, *Open*
373 *Forum Infect Dis* **5**, S586 (2018).
- 374 35. R. R. Miller III, B. K. Lopansri, J. P. Burke, M. Levy, S. Opal, R. E. Rothman, F. R. D'Alessio, V. K. Sidhaye,
375 N. R. Aggarwal, R. Balk, J. A. Greenberg, M. Yoder, G. Patel, E. Gilbert, M. Afshar, J. P. Parada, G. S. Martin, A.
376 M. Esper, J. A. Kempker, M. Narasimhan, A. Tsegaye, S. Hahn, P. Mayo, T. van der Poll, M. J. Schultz, B. P.
377 Scicluna, P. K. Klouwenberg, A. Rapisarda, T. A. Seldon, L. C. McHugh, T. D. Yager, S. Cermelli, D. Sampson,
378 V. Rothwell, R. Newman, S. Bhide, B. A. Fox, J. T. Kirk, K. Navalkar, R. F. Davis, R. A. Brandon, R. B. Brandon,
379 Validation of a Host Response Assay, SeptiCyte LAB, for Discriminating Sepsis from Systemic Inflammatory
380 Response Syndrome in the ICU, *American Journal of Respiratory and Critical Care Medicine* **198** (2018),
381 doi:10.1164/rccm.201712-2472OC.

- 382 36. R. K. Gupta, C. T. Turner, C. Venturini, H. Esmail, M. X. Rangaka, A. Copas, M. Lipman, I. Abubakar, M.
383 Noursadeghi, Concise whole blood transcriptional signatures for incipient tuberculosis: a systematic review and
384 patient-level pooled meta-analysis, *The Lancet Respiratory Medicine* **8**, 395–406 (2020).
- 385 37. C. T. Turner, R. K. Gupta, E. Tsaliki, J. K. Roe, P. Mondal, G. R. Nyawo, Z. Palmer, R. F. Miller, B. W. Reeve,
386 G. Theron, M. Noursadeghi, Blood transcriptional biomarkers for active pulmonary tuberculosis in a high-burden
387 setting: a prospective, observational, diagnostic accuracy study, *The Lancet Respiratory Medicine* **8**, 407–419
388 (2020).
- 389 38. N. L. Bray, H. Pimentel, P. Melsted, L. Pachter, Near-optimal probabilistic RNA-seq quantification, *Nat*
390 *Biotechnol* **34**, 525–527 (2016).
- 391 39. C. Sonesson, M. I. Love, M. D. Robinson, Differential analyses for RNA-seq: transcript-level estimates improve
392 gene-level inferences, *F1000Research* **4**, 1521 (2016).
- 393 40. S. Durinck, Y. Moreau, A. Kasprzyk, S. Davis, B. De Moor, A. Brazma, W. Huber, BioMart and Bioconductor:
394 a powerful link between biological databases and microarray data analysis, *Bioinformatics* **21**, 3439–3440 (2005).
- 395 41. E. R. DeLong, D. M. DeLong, D. L. Clarke-Pearson, Comparing the areas under two or more correlated
396 receiver operating characteristic curves: a nonparametric approach, *Biometrics* **44**, 837–845 (1988).
- 397 42. A. K. Zaas, M. Chen, J. Varkey, T. Veldman, A. O. Hero, J. Lucas, Y. Huang, R. Turner, A. Gilbert, R. Lambkin-
398 Williams, N. C. Øien, B. Nicholson, S. Kingsmore, L. Carin, C. W. Woods, G. S. Ginsburg, Gene Expression
399 Signatures Diagnose Influenza and Other Symptomatic Respiratory Viral Infections in Humans, *Cell Host &*
400 *Microbe* **6**, 207–217 (2009).
- 401 43. O. Ramilo, W. Allman, W. Chung, A. Mejias, M. Ardura, C. Glaser, K. M. Wittkowski, B. Piqueras, J.
402 Banchereau, A. K. Palucka, D. Chaussabel, Gene expression patterns in blood leukocytes discriminate patients
403 with acute infections, *Blood* **109**, 2066–2077 (2007).
- 404 44. R. Pescarmona, A. Belot, M. Villard, L. Besson, J. Lopez, I. Mosnier, A.-L. Mathieu, C. Lombard, L. Garnier,
405 C. Frchette, T. Walzer, S. Viel, Comparison of RT-qPCR and Nanostring in the measurement of blood interferon
406 response for the diagnosis of type I interferonopathies, *Cytokine* **113**, 446–452 (2019).

407 45. Y. Huang, A. K. Zaas, A. Rao, N. Dobigeon, P. J. Woolf, T. Veldman, N. C. Øien, M. T. McClain, J. B. Varkey,
408 B. Nicholson, L. Carin, S. Kingsmore, C. W. Woods, G. S. Ginsburg, A. O. Hero, Temporal dynamics of host
409 molecular responses differentiate symptomatic and asymptomatic influenza A infection, *PLoS Genet* **7**, e1002234
410 (2011).

411 **Funding**

412 Funding for COVIDsortium was donated by individuals, charitable Trusts, and corporations including Goldman
413 Sachs, Citadel and Citadel Securities, The Guy Foundation, GW Pharmaceuticals, Kusuma Trust, and Jagclif
414 Charitable Trust, and enabled by Barts Charity with support from UCLH Charity. RKG is funded by National
415 Institute for Health Research (DRF-2018-11-ST2-004). JCM, CM and TAT are directly and indirectly supported by
416 the University College London Hospitals (UCLH) and Barts NIHR Biomedical Research Centres and through the
417 British Heart Foundation (BHF) Accelerator Award (AA/18/6/34223). TAT is funded by a BHF Intermediate
418 Research Fellowship (FS/19/35/34374). MN is supported by the Wellcome Trust (207511/Z/17/Z) and by NIHR
419 Biomedical Research Funding to UCL and UCLH. RJB/DMA are supported by UKRI/MRC Newton
420 (MR/S019553/1, MR/R02622X/1 and MR/V036939/1MR/S019553/1 and MR/R02622X/1), NIHR Imperial
421 Biomedical Research Centre (BRC):ITMAT, Cystic Fibrosis Trust SRC, and Horizon 2020 Marie Curie Actions.
422 MKM is supported by the UKRI/NIHR UK-CIC grant, a Wellcome Trust Investigator Award (214191/Z/18/Z) and a
423 CRUK Immunology grant (26603) AM is supported by Rosetrees Trust, The John Black Charitable Foundation,
424 and Medical College of St Bartholomew's Hospital Trust.

425 **Author contributions**

426 CM, TAT, JCM and MN designed the study. JR, AC, MJ, GJ, MA, JL, TCM, CM and TAT acquired the data. RKG,
427 JR, LB and MN analysed the data. RKG, LB and MN designed and performed the systematic literature search.
428 RKG, JR, LB, DA, RB, MM, AM, BMC, CM, TAT, JCM and MN interpreted the data. RKG, JR, LB and MN wrote
429 the manuscript with input from all the authors.

430 **Competing interests**

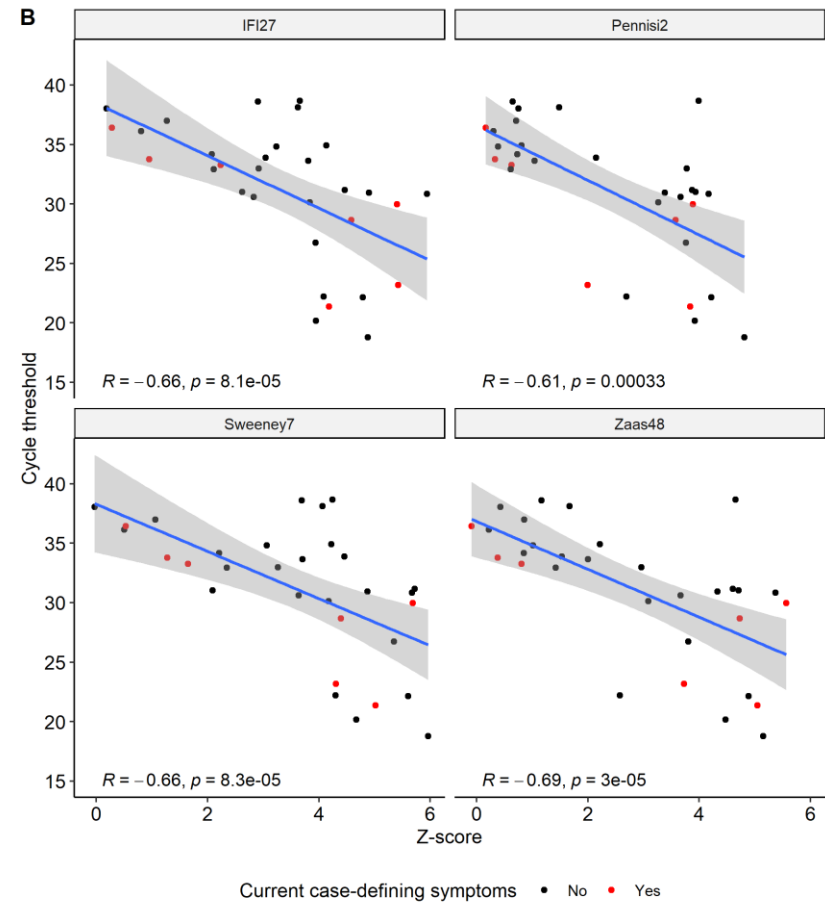
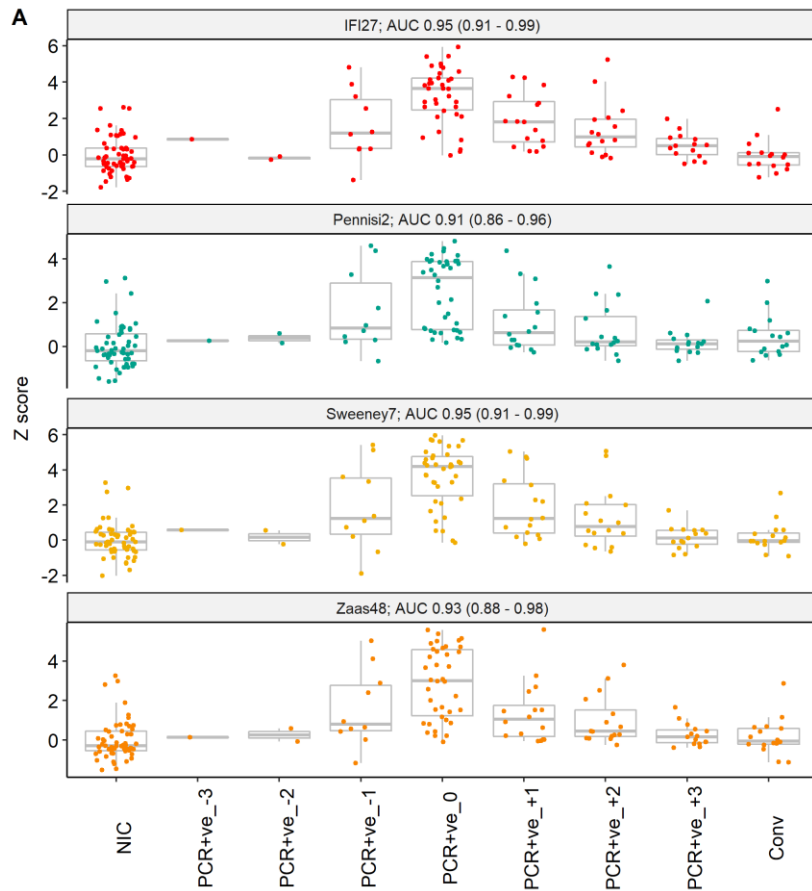
431 The authors declare no conflict of interests.

432 **Data sharing statement:**

433 Applications for access to the individual participant de-identified data (including data dictionaries) and samples
434 can be made to the access committee via an online application [https://covid-consortium.com/application-for-](https://covid-consortium.com/application-for-samples/)
435 [samples/](https://covid-consortium.com/application-for-samples/). Each application will be reviewed, with decisions to approve or reject an application for access made
436 on the basis of (i) accordance with participant consent and alignment to the study objectives (ii) evidence for the
437 capability of the applicant to undertake the specified research and (iii) availability of the requested samples. The
438 use of all samples and data will be limited to the approved application for access and stipulated in the material and
439 data transfer agreements between participating sites and investigators requesting access.

440 **Data and materials availability**

441 Open access to RNAseq data and associated essential metadata are available under accession no E-MTAB-
442 10022 at ArrayExpress (<https://www.ebi.ac.uk/arrayexpress/>).



451 **Figure 2. Four best performing RNA signatures for discriminating participants with contemporaneous PCR-confirmed SARS-CoV-2 infection,**
 452 **compared to uninfected controls.** Shown as **(A)** Z scores stratified by interval to positive SARS-CoV-2 PCR; and **(B)** Z scores vs. contemporaneous
 453 PCR cycle threshold for SARS-CoV-2 ORF1. NIC = non-infected controls; Conv = convalescent samples, collected at study week 24. AUC = area under
 454 the receiver operating characteristic curve (95% CI) for discriminating participants with contemporaneous PCR-confirmed SARS-CoV-2 infection
 455 (PCR+ve_0 group), compared to uninfected controls. R = Spearman rank correlation coefficient.

Signature(s)	Model [§]	Discovery population(s)	Discovery setting(s)	Discovery approach	Validation population(s)	Intended application
AndresTerres11 (23)	Geometric mean of all genes ("influenza meta-signature")	Five cohorts -children and adults with influenza; adults challenged with influenza; adults with bacterial pneumonia	UK, USA and Australia	Differential expression followed by leave-one-cohort-out strategy and filtering for heterogeneity of effect size, using genome-wide data	Eight cohorts - children or adults with influenza or bacterial infection; adults challenged with influenza; adults vaccinated against influenza	Influenza versus bacterial or other viral infection
Henrickson16 (24)	Difference in geometric means between upregulated and downregulated genes ("Influenza paediatric signature score")	Four cohorts -children with influenza-like illness	USA	Meta-analysis and leave-one-out strategy to identify common genes using genome-wide data	Two cohorts – children or adults with influenza.	Influenza infection versus healthy
Herberg2 (10)	Disease risk score†	Children with viral or bacterial infection	UK, USA and Spain	Elastic net followed by forward selection–partial least squares, using significantly differentially expressed transcripts	Children with bacterial or viral infection, inflammatory disease, or indeterminate diagnosis	Viral versus bacterial infection in febrile children
IFI44L (14)	N/A	Children with viral or bacterial infection (10)	UK, USA and Spain	Elastic net followed by forward selection–partial least squares, using significantly differentially expressed transcripts	Children with bacterial or viral infection	Viral versus bacterial infection in febrile children
IFIT3; RSAD2* (22)	N/A	Three cohorts of adults challenged with rhinovirus, influenza or RSV (42)	UK and USA	Sparse latent factor regression analysis on genome-wide data (42) followed by regularised logistic regression on the resulting 30-gene signature	Close contacts of students with acute upper respiratory viral infections	Pre-symptomatic viral infection versus healthy
Lopez7 (15)	Sum of weighted gene expression values ("Bacterial versus viral classifier")	Children and adults with viral, bacterial or non-infectious acute respiratory illness (19)	USA	SVM using genome-wide data	Children with acute viral or bacterial infections (43)	Viral versus bacterial respiratory infection
Lydon15 (11)	Logistic regression ("Viral classifier")§	Adolescents and adults with viral, bacterial or non-infectious acute respiratory illness	USA	LASSO using 87 selected target genes from previously derived signatures (19, 21)	Patients with viral/bacterial co-infection or suspected bacterial infection	Viral versus bacterial respiratory infection
MX1 (29)	N/A	N/A	N/A	Pre-selected due to biological plausibility	Adults challenged with the live yellow fever virus vaccine	Viral infection versus healthy
OLFM4 (25)	N/A	Children with RSV infection	The Netherlands	Differential expression and PAM classifier training using genome-wide data	A second cohort of children with RSV infection	Severity of RSV infection in children
Pennisi2 (20)	Disease risk score†	Children with viral or bacterial infection (10)	UK, USA and Spain	Elastic net followed by forward selection–partial least squares, using significantly differentially expressed transcripts (10), followed by selection of an adequately expressed transcript for use in RT-LAMP	Children with bacterial or viral infection	Viral versus bacterial infection in children

Sampson10 (13)	Disease risk score ("Combined SeptiCyte score")	Eight cohorts of neonates, children and adults with bacterial infections	UK, USA, Estonia and Australia	Regression analysis of transcript pairs using the 6000 most highly expressed genes from each dataset	Unselected consecutive patients presenting to the emergency department with febrile illness	Viral versus bacterial in febrile patients	
Sampson4 (16)	Disease risk score ("Septicyte VIRUS")	Ten cohorts - children and adults with viral infections. Two cohorts - adults challenged with influenza. Two cohorts - macaques challenged with Lassa or LCMV.	USA, Finland and Australia	Brazil and	Regression analysis of transcript pairs using the 6000 most highly expressed genes from each dataset	Seven human cohorts and six non-human mammal cohorts, infected or challenged with viruses across all seven of the Baltimore virus classification groups	Viral versus non-viral conditions
Sweeney11 (17)	Difference in geometric means between upregulated and downregulated genes, multiplied by ratio of counts of positive to negative genes ("Sepsis metascore")	Nine cohorts of patients with sepsis or trauma	USA, Europe, Scandinavia, Canada, UK	Australia,	Greedy forward search of 82 differentially expressed genes identified by multicohort analysis	Twelve cohorts of adults with viral or bacterial sepsis, or trauma	Viral or bacterial sepsis versus sterile inflammation
Sweeney7 (12)	Difference in geometric means between upregulated and downregulated genes, multiplied by ratio of counts of positive to negative genes ("Bacterial/viral metascore")	Eight cohorts of children and adults with viral and bacterial infections	USA, Australia, UK		Greedy forward search of 72 differentially expressed genes identified by multicohort analysis	Twenty-four cohorts of children and adults with viral or bacterial infections, or healthy controls	Viral versus bacterial infection
Trouillet-Assant6 (18)	Median expression of 6 interferon-stimulated genes ("Interferon score (44)")	N/A	N/A		Differential expression using 15 preselected interferon-stimulated genes	Febrile children with bacterial or viral infection	Viral versus bacterial infection in febrile children
Tsalik33 (19)	Logistic regression ("Viral ARI classifier")§	Children and adults with viral, bacterial or non-infectious acute respiratory illness, and healthy controls	USA		LASSO using the 40% of microarray probes with the largest variance after batch correction	Five cohorts – children or adults with viral, bacterial or non-infectious respiratory illness, or viral/bacterial co-infection	Viral versus bacterial acute respiratory illness
Yu3; IFI27 (30)	1. Mean expression ("non-RSV infections vs. controls")¶¶¶ 2. N/A	Children with acute respiratory illness and a positive result for a viral infection on a nasopharyngeal swab	USA		Modified supervised principal component analysis using all expressed transcripts	Children with RSV or rhinovirus infection	Viral versus healthy in children
Zaas48 (21)	Probit regression ("Viral classifier")§	Two cohorts of adults challenged with influenza A H3N2 or H1N1	USA		Elastic net using 48 selected genes comprised of 29 derived as a signature in a previous study (42), 7 shown to be downregulated in analysis of influenza challenge time course data (45) and 12 control genes	Adults presenting to the emergency department with fever and healthy controls	Viral versus bacterial acute respiratory illness

457 **Table 1. Characteristics of whole-blood RNA signatures for viral infection included in analysis.** Signatures are referred to by combining the first author's name
458 of the corresponding publication as a prefix, with number of constituent genes as a suffix. Log₂-transformed transcripts per million data used to calculate all signatures.

459 *Study by McClain *et al.* sought to validate a 36-transcript signature for detection of respiratory viral infections. Model coefficients for the 36-transcript model are not

460 provided; we therefore included the two best performing single transcripts from the study in the current analysis, since they demonstrated similar performance to the
461 full model in the original publication. &Where applicable, the name of the signature from the original publication is indicated in brackets. †Defined as the sum of
462 downregulated genes subtracted from the sum of upregulated genes. §Logistic and probit regression models were calculated on the linear predictor scale using model
463 coefficients from original publications. Abbreviations: RSV, respiratory syncytial virus. PAM, prediction analysis of microarrays. SVM, support vector machine. LASSO,
464 Least Absolute Shrinkage Selector Operator. RT-LAMP, Reverse Transcription Loop-mediated Isothermal Amplification. LCMV, lymphocytic choriomeningitis virus.

Signature	AUROC	Sensitivity	Specificity	p
IFI27	0.95 (0.91 - 0.99)	0.84 (0.7 - 0.93)	0.95 (0.85 - 0.98)	NA
Sweeney7	0.95 (0.91 - 0.99)	0.82 (0.67 - 0.91)	0.95 (0.85 - 0.98)	0.851
Zaas48	0.93 (0.88 - 0.98)	0.61 (0.45 - 0.74)	0.95 (0.85 - 0.98)	0.088
Pennisi2	0.91 (0.86 - 0.96)	0.58 (0.42 - 0.72)	0.95 (0.85 - 0.98)	0.088
IFI44L	0.9 (0.84 - 0.96)	0.55 (0.4 - 0.7)	0.95 (0.85 - 0.98)	0.039
AndresTerre11	0.89 (0.83 - 0.95)	0.55 (0.4 - 0.7)	0.95 (0.85 - 0.98)	0.021
Henrickson16	0.89 (0.82 - 0.96)	0.55 (0.4 - 0.7)	0.93 (0.83 - 0.97)	0.009
TrouilletAssant6	0.87 (0.8 - 0.94)	0.53 (0.37 - 0.68)	0.93 (0.83 - 0.97)	0.008
Lydon15	0.86 (0.79 - 0.94)	0.58 (0.42 - 0.72)	0.95 (0.85 - 0.98)	0.005
Herberg2	0.84 (0.76 - 0.92)	0.5 (0.35 - 0.65)	0.93 (0.83 - 0.97)	0.003
Sampson4	0.84 (0.76 - 0.92)	0.5 (0.35 - 0.65)	0.93 (0.83 - 0.97)	0.003
Sampson10	0.83 (0.74 - 0.92)	0.5 (0.35 - 0.65)	0.95 (0.85 - 0.98)	0.002
RSAD2	0.83 (0.74 - 0.91)	0.47 (0.32 - 0.63)	0.93 (0.83 - 0.97)	0.002
MX1	0.82 (0.74 - 0.91)	0.45 (0.3 - 0.6)	0.95 (0.85 - 0.98)	0.002
Tsalik33	0.79 (0.7 - 0.89)	0.39 (0.26 - 0.55)	0.98 (0.9 - 1)	0.001
Lopez7	0.79 (0.69 - 0.88)	0.37 (0.23 - 0.53)	0.98 (0.9 - 1)	0.001
IFIT3	0.75 (0.64 - 0.86)	0.45 (0.3 - 0.6)	0.93 (0.83 - 0.97)	0.000
OLFM4	0.62 (0.51 - 0.74)	0.03 (0 - 0.13)	0.98 (0.9 - 1)	0.000
Sweeney11	0.6 (0.48 - 0.73)	0.16 (0.07 - 0.3)	0.96 (0.88 - 0.99)	0.000
Yu3	0.59 (0.47 - 0.71)	0.05 (0.01 - 0.17)	1 (0.93 - 1)	0.000

466 **Table 2. Validation metrics of whole-blood RNA signatures for discrimination of participants with PCR-**
467 **confirmed SARS-CoV-2 infection at first week of PCR-positivity (PCR+ve_0).** Discrimination is shown as area
468 under the receiver operating characteristic curve (AUROC). Sensitivity and specificity are shown using pre-defined
469 thresholds of 2 standard deviations above the mean of the uninfected control population (Z2). P values show
470 pairwise comparisons to best performing signature with Benjamini-Hochberg adjustment (false discovery rate
471 0.05). All metrics as shown as point estimates (95% confidence intervals). Equivalent table for discrimination of
472 participants with SARS-CoV-2 infection one week prior to PCR-positivity (PCR+ve_-1), compared to uninfected
473 controls, is shown in Table S3.