

1 Understanding COVID-19 dynamics and the effects of interventions in the Philippines: A  
2 mathematical modelling study

3  
4 Jaime M. Caldwell<sup>1\*</sup>, Elvira de Lara-Tuprio<sup>2</sup>, Timothy Robin Teng<sup>2</sup>, Maria Regina Justina E.  
5 Estuar<sup>3</sup>, Raymond Francis R. Sarmiento<sup>4</sup>, Milinda Abayawardana<sup>5</sup>, Robert Neil F. Leong<sup>6</sup>,  
6 Richard T. Gray<sup>7</sup>, James G. Wood<sup>6</sup>, Emma S. McBryde<sup>8</sup>, Romain Ragonnet<sup>5</sup>, and James M.  
7 Trauer<sup>5</sup>

- 8  
9 1. Department of Biology, University of Hawaii at Manoa, Hawaii, USA  
10 2. Department of Mathematics, Ateneo de Manila University, Quezon City, Philippines  
11 3. Department of Information Systems and Computer Science, Ateneo de Manila  
12 University, Quezon City, Philippines  
13 4. National Telehealth Center, National Institutes of Health, University of the  
14 Philippines, Manila, Philippines  
15 5. School of Public Health and Preventive Medicine, Monash University, Melbourne,  
16 Australia  
17 6. School of Population Health and Community Medicine, University of New South  
18 Wales, Sydney, Australia  
19 7. The Kirby Institute, University of New South Wales, Sydney, Australia  
20 8. Australian Institute of Tropical Health and Medicine, James Cook University,  
21 Queensland, Australia

22 \* corresponding author contact details: 2538 McCarthy Mall, Edmondson Hall, Honolulu,  
23 HI, 96822, USA; [jamie.sziklay@gmail.com](mailto:jamie.sziklay@gmail.com)

24  
25

## 26 ABSTRACT

### 27 Objective

28 COVID-19 appears to have caused less severe outbreaks in many low- and middle-income  
29 countries (LMIC) compared with high-income countries, possibly because of differing  
30 demographics, socio-economics, surveillance, and policy responses. Here, we investigate the  
31 role of multiple factors on COVID-19 dynamics in the Philippines, a LMIC that has had a  
32 relatively severe COVID-19 outbreak.

### 33 Methods

34 We applied an age-structured compartmental model that incorporated time-varying mobility,  
35 testing, and personal protective behaviors (through a “Minimum Health Standards” policy,  
36 MHS) to represent the Philippines COVID-19 epidemic nationally and for three highly  
37 affected regions (Calabarzon, Central Visayas, and the National Capital Region). We  
38 estimated effects of control measures, key epidemiological parameters, and interventions.

### 39 Findings

40 Population age structure, contact rates, mobility, testing, and MHS were sufficient to explain  
41 the Philippines epidemic based on the good fit between modelled and reported cases,  
42 hospitalisations, and deaths. Several of the fitted epidemiological parameters were consistent  
43 with those reported in high-income settings. The model indicated that MHS reduced the  
44 probability of transmission per contact by 15-26%. The February 2021 case detection rate  
45 was estimated at ~9%, population recovered at ~12%, and scenario projections indicated high  
46 sensitivity to MHS adherence.

47 Conclusions

48 COVID-19 dynamics in the Philippines are driven by age, contact structure, mobility, and  
49 MHS adherence, and the epidemic can be understood within a similar framework as for high-  
50 income settings. Continued compliance with low-cost MHS should allow the Philippines to  
51 maintain epidemic control until vaccines are widely distributed, but disease resurgence could  
52 occur due to low population immunity and detection rates.

53

54 BACKGROUND

55 Coronavirus 2019 (COVID-19) epidemiology differs across settings with apparently less  
56 severe outbreaks in many low- and middle-income countries (LMIC) compared with high  
57 income countries (HIC), such that understanding why LMIC are less affected is critical to  
58 understanding global epidemiology. Multiple demographic and socio-economic factors likely  
59 drive differential COVID-19 burden across income groups. Expansive population pyramids  
60 and tropical climates may reduce COVID-19 transmission and severe disease in many LMIC  
61 (1–3), while high contact rates, high prevalence of comorbidities, high population densities,  
62 and limited healthcare capacity could increase burden (4–8). While many LMIC have had  
63 lower COVID-19 burdens than HIC, weak surveillance systems (9) could also affect  
64 epidemic estimates. Nonetheless, understanding why many LMIC have had apparently less  
65 severe outbreaks could help other countries better control their epidemics until vaccines are  
66 widely distributed.

67

68 While there are now several highly effective vaccines to prevent severe disease (10,11), and  
69 possibly infection (12,13), from SARS-CoV-2 (the disease that causes COVID-19),  
70 widespread vaccination will take months to years (14,15) and will likely need to be coupled  
71 with effective non-pharmaceutical interventions (NPIs) (16). For countries rolling out

72 vaccines, easing NPIs too early could jeopardize success (16). However, for the majority of  
73 the world's population, particularly those living in LMIC, vaccine access and delivery is  
74 limited (17) and widespread vaccination coverage may take two or more years (15,18). Thus,  
75 with or without vaccines, understanding the effectiveness of NPIs that can curtail COVID-19  
76 transmission is critical. There are three broad categories of NPIs, those that aim to: (i) isolate  
77 infected individuals and their contacts; (ii) reduce contact between infected and susceptible  
78 people (henceforward "macrodistancing"); and (iii) reduce transmission given contact  
79 between infected and susceptible people (henceforward "microdistancing"). Most HIC have  
80 enforced initiatives for all three types of NPIs with a focus on long, strict macrodistancing  
81 interventions through stay-at-home orders. LMIC have also employed macrodistancing  
82 policies but often with shorter, less strict orders because these types of initiatives exacerbate  
83 poverty and have societal costs (19,20) that LMIC cannot withstand. Relaxing of short-term  
84 macrodistancing policies would be expected to lead to disease resurgence (21), which runs  
85 counter to the experience of some LMIC. A meta-analysis indicates that inexpensive  
86 microdistancing policies (e.g., wearing face masks) can be highly effective (22) and therefore  
87 could explain why some LMIC are continuing to suppress transmission after an initial period  
88 of macrodistancing.

89

90 The Philippines is one of the most severely affected countries by COVID-19 in the Western  
91 Pacific Region but has also succeeded in curtailing the epidemic while easing their most  
92 restrictive quarantine measures. Here we investigate COVID-19 epidemiology in the  
93 Philippines and the effectiveness and sensitivity to microdistancing policies. The Philippines  
94 is a LMIC that has had over 580,000 confirmed cases and more than 12,000 deaths as of 3<sup>rd</sup>  
95 March 2020, with a peak in incidence in August 2020. Various NPIs have been implemented  
96 in the country, with the timing and level of restriction varying by region. The NPIs

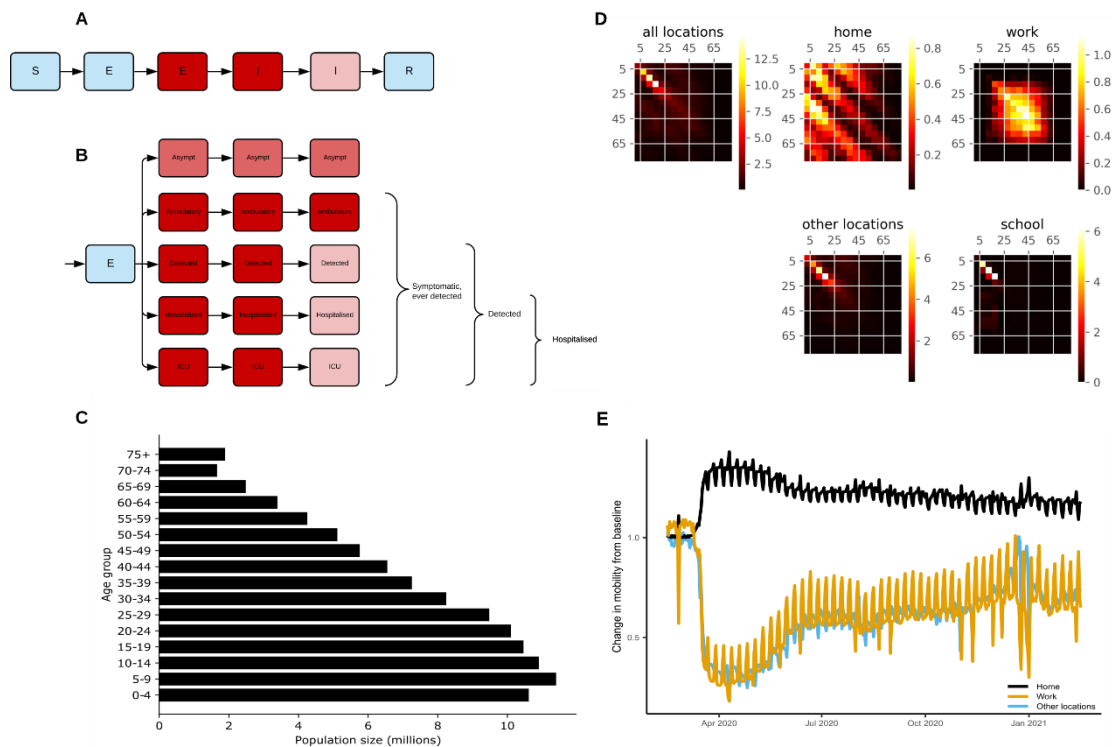
97 implemented include different levels of community quarantines, including school closures.  
98 Since October 2020, the Philippines has shifted from a focus on community quarantine orders  
99 towards greater reliance on Minimum Health Standards (MHS) policies, requiring the use of  
100 face coverings, physical distancing, and hand hygiene. To gain insights into the Philippines  
101 epidemic, we present a data-driven COVID-19 model, which includes age structure,  
102 heterogeneous contact patterns, time-varying testing rates, and macro- and microdistancing.  
103 We use this model to 1) estimate epidemiological parameters for COVID-19 in a LMIC for  
104 comparison with HIC; 2) consider the past effect of NPIs; and 3) create scenarios for various  
105 policy changes and estimate associated risk of disease resurgence.

## 106 METHODS

### 107 Model

108 We developed an age-structured deterministic compartmental model of SARS-CoV-2  
109 transmission, the virus that causes COVID-19, to model disease spread at the national level,  
110 and for three highly affected regions: Calabarzon (Region IV-A), Central Visayas (Region  
111 VII), and the National Capital Region (Metro Manila). We included six sequential  
112 compartments in the model representing susceptible, non-infectious exposed, infectious  
113 exposed, early actively infectious, late actively infectious, and recovered/removed persons  
114 (Figs. 1A, S1), and stratified the infectious compartments by detection status and disease  
115 severity (Figs. 1B, S2-3; we show differential equations in supplemental material). To  
116 account for age-dependent disease processes, we stratified all model compartments by age  
117 group using 5-year age bands from birth to  $\geq 75$  years of age and allowed the proportion  
118 symptomatic, susceptibility to infection, infection fatality rate, and the probability of  
119 hospitalisation to differ by age group. We used the 2020 projected population distribution by  
120 age from the Philippines Statistics Authority for the total population sizes of each age group,

121 which we then split among compartments (Figs. 1C, S4). To introduce heterogeneous mixing  
 122 by age, we incorporated synthetic mixing matrices developed by Prem *et al.* 2017 (23) (Fig.  
 123 1D).



124

125 **Figure 1. Age-structured COVID-19 model informed with population size, contact rates,**  
 126 **and mobility from the Philippines.** (A) Unstratified model structure, coloured by infectious  
 127 state (blue = non-infectious; pink = moderately infectious; red = highly infectious). (B)  
 128 Stratification by infection and detection status (same colour scheme as in A). (C) Starting  
 129 population age distribution used in the Philippines national model. (D) Heterogeneous mixing  
 130 matrices by age in the absence of NPIs (brighter colours indicate higher contact rates). (E)  
 131 Community quarantine driven mobility adjustments applied to the mixing matrices (before  
 132 seven-day moving average smoothing). Other locations include average from retail and  
 133 recreation, supermarket and pharmacy, parks, and public transport. We provide panels C and  
 134 E for the regional models in Fig. S4.

135

136 We considered several inter-compartmental transition rates to represent epidemiologically  
 137 important processes. To estimate disease incidence, detected cases, hospitalisation, and ICU  
 138 admission rates, we quantified transitions between different exposed and infectious  
 139 compartments within the model (Fig. 1A-B, supplemental material). To calculate a modelled  
 140 case detection rate, we calculated the proportion of symptomatic cases that were detected

141 (Fig. 1B). We related the case detection rate (CDR, equation 1) to the daily number of per  
142 capita tests performed using an exponential function, under the assumption that a certain  
143 testing rate is associated with a specific case detection rate (with this parameter varied in  
144 calibration):

145

Equation 1

$$CDR_{time} = 1 - \exp\left(\frac{-b * tests_{time}}{10,000}\right)$$

146 Non-pharmaceutical interventions

147 We simulated community quarantines (e.g., business closures and working from home) by  
148 varying the relative contribution of four locations to an overall age-specific dynamic mixing  
149 matrix (Figs. 1E, S4). Using Google mobility data  
150 (<https://www.google.com/covid19/mobility/>), we scaled the household contribution to the  
151 matrix with residential mobility; the work contribution with workplace mobility; and the  
152 contribution from other locations (contacts outside of schools, homes, and work) with  
153 average mobility from all other Google mobility locations (Fig. 1E). We simulated school  
154 closures by scaling school contribution according to the proportion of children attending  
155 schools under relevant policies. In the Philippines, school closures started in mid-March 2020  
156 in the most highly affected areas and schools remain closed throughout the country (as of 3<sup>rd</sup>  
157 March 2021).

158

159 We simulated MHS as a scaled function that proportionally reduces the probability of  
160 transmission given contact (reducing the probability of an infected person passing on the  
161 infection and the probability of a contact being infected). We allowed the function to scale  
162 from zero when we assumed minimal compliance with MHS (15th August 2020) to a  
163 maximum value estimated by the calibration process (described below) when MHS was  
164 widely adopted (15th November 2020).

165 Calibration

166

167 We calibrated the model to data to reproduce local COVID-19 dynamics and compared  
168 estimations of key epidemiological parameters with prior estimates from HIC (Table 1). We  
169 used three sources of local data as calibration targets: total daily confirmed cases (determined  
170 by RT-PCR) and the most recent estimate of ICU occupancy and cumulative deaths.

171 Although we calibrated the model to these three targets simultaneously, we prioritized  
172 confirmed cases in the calibration process because these data are considered the highest  
173 quality in the Philippines for COVID-19 (based on advice from local health officials), while

174 limiting the use of ICU and mortality data to the most recent values, as the quality of these  
175 data improved over time. To account for differences between weekday and weekend

176 reporting, we smoothed daily confirmed cases using a seven day moving average. We

177 simultaneously fit the model to the three calibration targets using an adaptive Metropolis  
178 algorithm (24) (Table 1; supplemental material). For the prior distributions of

179 epidemiological calibration parameters, we used uniform priors for highly uncertain

180 quantities and truncated normal distributions for quantities informed by epidemiological

181 evidence (Table 1; supplemental material). To account for potential differences between HIC

182 and LMIC, we included “adjuster” parameters to modify the proportion of symptomatic

183 individuals, proportion of symptomatic individuals hospitalised, and the infection fatality rate

184 as the prior distributions are based on estimates from HIC. The adjuster values are

185 multiplicative factors applied to the odds ratio, where an adjuster value of one would indicate

186 no adjustment is needed, a value below one would indicate the parameter is lower in the

187 Philippines, and a value above one would indicate the parameter is higher in the Philippines.

188 To calibrate the model, we ran seven independent chains with approximately 1000 iterations

189 per chain and discarded the first 200 iterations as burn-in; we ensured convergence through

190 visual inspection of trace plots. We used Latin Hypercube Sampling across the



191 multidimensional parameter space to select initial parameter conditions. We structured the  
 192 model, calibration data, likelihood function, and priors identically for the national and  
 193 regional models. We report the model outputs as median values with 25-75 and 2.5-97.5  
 194 percentiles to show uncertainty.

195 **Table 1. Key parameter prior and posterior distributions from the Philippines model.**  
 196 All parameters with the term “adjuster” allow for modification to the best estimates from the  
 197 literature. Adjuster values are multiplicative factors applied to the odds ratio. An adjuster  
 198 value of one indicates no adjustment is needed, a value below one indicates the parameter is  
 199 lower in the Philippines, and a value above one indicates the parameter is higher in the  
 200 Philippines. MHS is the Minimum Health Standards and refers to the microdistancing  
 201 function that proportionally reduces the probability of transmission given contact.

202

Parameter	Prior distribution	Prior distribution parameters	Posterior centiles		
			2.5th	50th	97.5th
Incubation period (days)	Truncated normal	Mean 5.5, standard deviation 0.97, truncated range [1, infinity)	3.86	5.43	7.26
Duration actively infectious (days)	Truncated normal	Mean 6.5, standard deviation 0.77, truncated range [4, infinity)	5.22	6.42	7.80
Infection risk per contact	Uniform	Range 0.02-0.04	0.030	0.034	0.038
Symptomatic proportion adjuster	Truncated normal	Mean 1, standard deviation 0.2, truncated range [0.5, infinity)	0.72	1.03	1.42
Infection fatality adjuster	Truncated normal	Mean 1, standard deviation 0.2, truncated range [0.5, infinity)	0.70	1.01	1.38
hospitalisation proportion adjuster	Truncated normal	Mean 1, standard deviation 0.2, truncated range [0.5, infinity)	0.69	1.02	1.39
Maximum effect of MHS (proportion)	Uniform	Range 0.1-0.6	0.15	0.20	0.26
Case Detection Rate at testing rate of 1 test per 10,000 per day (proportion)	Uniform	Range 2-20	3.08%	9.25%	18.5%
Infectious seed (persons)	Uniform	Range 10-100	26.50	73.40	96.60

203

## 204 Scenarios

205 We ran scenarios with different policy changes to estimate future COVID-19 transmission  
206 and potential for disease resurgence with easing different interventions. The baseline scenario  
207 held mobility and MHS constant based on the most recent date of data (26th February 2021)  
208 through the end of the scenario period (31st December 2021). All scenarios began on 27<sup>th</sup>  
209 February 2021. We simulated 50% return of onsite workers by increasing the relative  
210 contribution of workplace mobility in the overall age-specific mixing matrix from current  
211 levels to current levels plus half the difference between current workplace mobility and pre-  
212 COVID workplace mobility. We simulated school reopenings by scaling school contribution  
213 in the overall age-specific mixing matrix from zero to one on the scenario start date to reflect  
214 full school attendance. To estimate the effect of easing MHS by 50, 70, and 100%, we  
215 decreased the microdistancing function, which reduces the values of all elements of the  
216 mixing matrices by a certain proportion, to 0.5, 0.3, and 0.0, respectively. We report the  
217 scenarios as median values with 25-75 and 2.5-97.5 percentiles to show uncertainty.

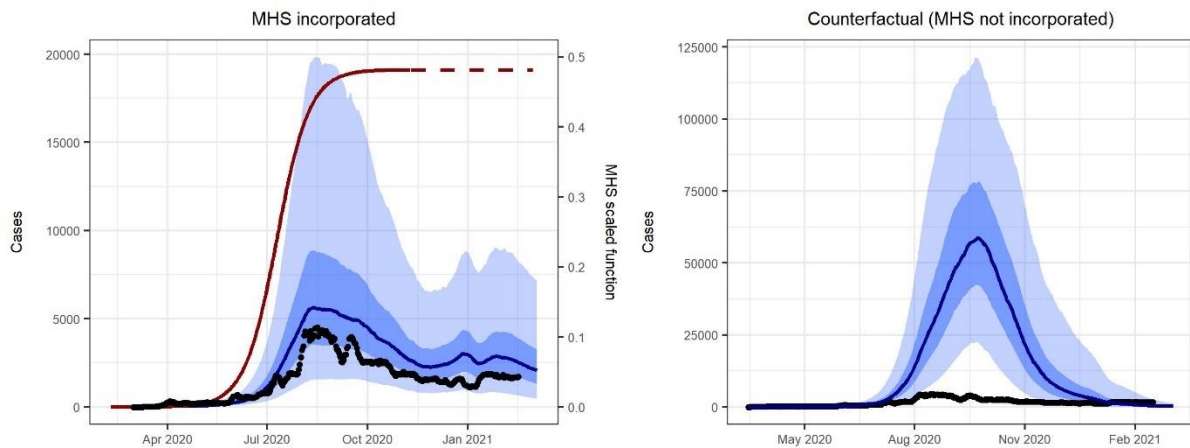
## 218 RESULTS

### 219 Epidemiological fit

220

221 The model reproduced national and regional trends in confirmed cases, hospitalisations, and  
222 deaths when incorporating changes in movement and adherence to MHS. The model fit was  
223 considerably better with the inclusion of both community quarantine-adjusted movement and  
224 adherence to MHS compared with a counterfactual scenario that only included community  
225 quarantines (Figs. 2, S5-7). These results suggest that if MHS had not been implemented,  
226 there would have likely been ten times as many cases at the outbreak peak. The four  
227 calibrated models (national and three regional models) show a reasonably good fit to total  
228 confirmed cases (Figs. 2-3). Additionally, the distributions are similar for modeled and

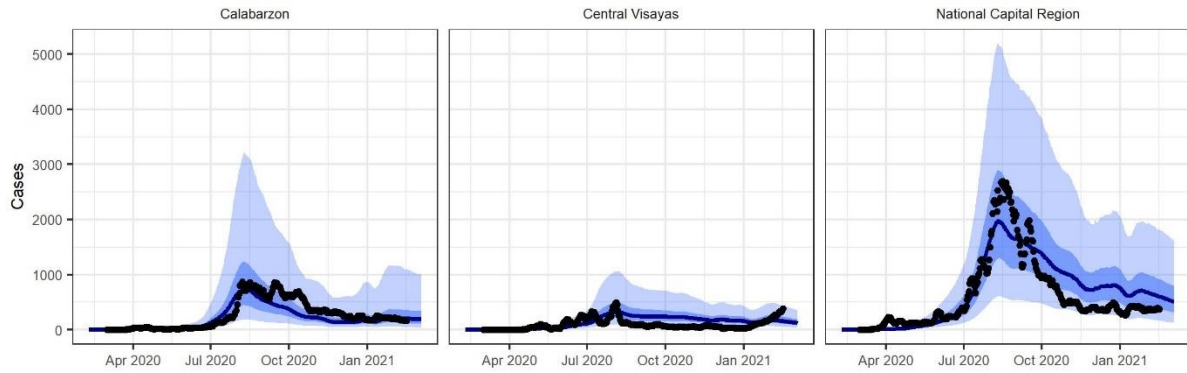
229 confirmed cumulative cases by age group, with very close correspondence for those aged 40  
230 years and above, but underpredictions for those aged 25-39 and overpredictions for ages 19  
231 and below (Fig. S8). The models slightly overpredict reported cumulative deaths and ICU  
232 occupancy (with the exception of the National Capital Region) (Figs. 4, S9-11). We estimated  
233 an attack rate of approximately 12% (95% CI = 5-29%) as of 26th February 2021 (Fig. 4).



234

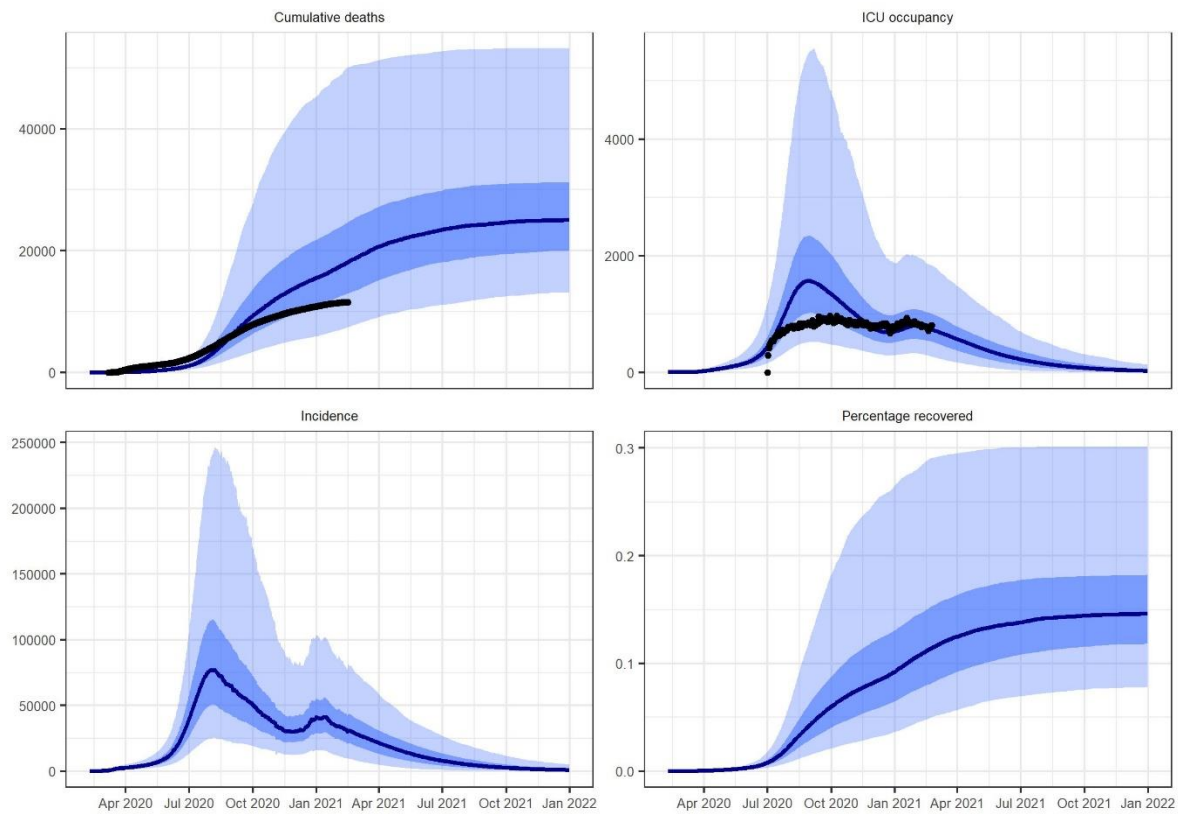
235 **Figure 2. Model reproduced daily confirmed case count better with the inclusion of**  
236 **Minimum Health Standards (MHS).** We calibrated the national model to daily confirmed  
237 cases (black dots; same in both plots with different y-axes), which included MHS (left) and  
238 ran a counterfactual scenario that did not include MHS (right). Each plot shows the median  
239 modeled detected cases (blue line) with shaded areas representing the 25th to 75th centile  
240 (dark blue) and 2.5th to 97.5th centile (light blue) of estimated detected cases. The red curve  
241 represents the effect of MHS (i.e., reduced transmission risk per contact) in the model  
242 through time. The MHS effect value is squared in the model to account for the reduction in  
243 the probability of an infected person passing on the infection and the probability of a contact  
244 being infected, prior to adjustment of each cell of the mixing matrix. We provide results for  
245 the regional models with and without MHS in Figs. S5-7.

246



247

248 **Figure 3: Model fit to confirmed cases in three regions of the Philippines, which varied**  
249 **in magnitude.** Each plot shows the regional daily confirmed cases (black dots) overlaid on  
250 the median modeled detected cases (blue line), with shaded areas representing the 25th to  
251 75th centile (dark blue) and 2.5th to 97.5th centile (light blue) of estimated detected cases.



252

253 **Figure 4. Model estimated epidemic indices from the calibrated Philippines model.**  
254 Modeled median cumulative deaths, ICU occupancy, incidence, and percentage of the  
255 population recovered from COVID-19 (blue line) with shaded areas for 25th to 75th centile  
256 (dark blue) and 2.5th to 97.5th centile (light blue) and overlaid with reported cumulative  
257 deaths and ICU occupancy (black dots). Note that only the most recent estimate of  
258 cumulative deaths and ICU occupancy were included in the likelihood function, with the  
259 other time points presented as validation. ICU occupancy data was considered to have  
260 improved over the course of the epidemic. We provide equivalent regional model outputs in  
261 Figs. S9-11.

262

263 Parameter and case detection estimation

264

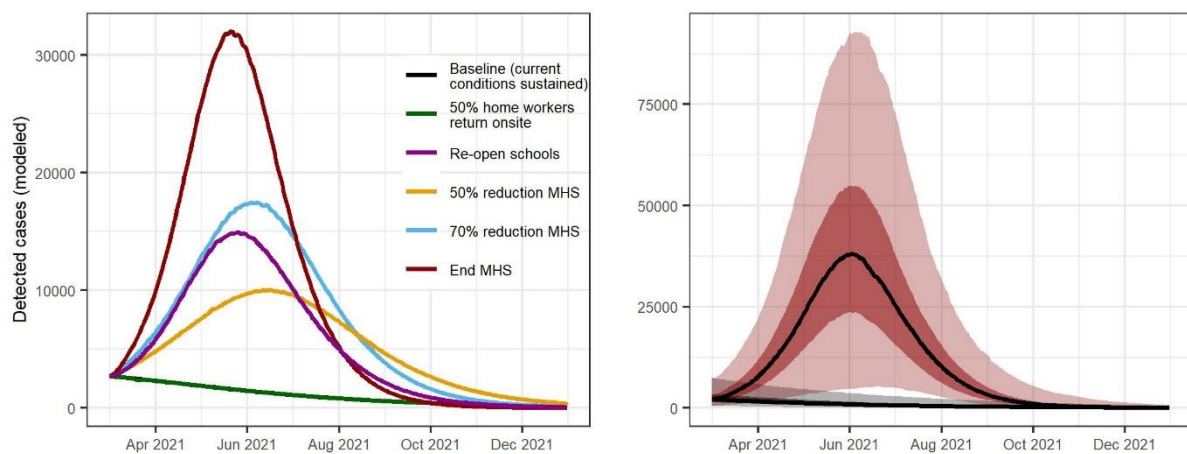
265 We estimated key epidemiological parameters and transition rates (Table 1; Fig. S12). The  
266 posterior distribution of the incubation period and infectious period did not differ markedly  
267 from their prior distributions, obtained from the literature. We incorporated parameters to  
268 adjust the proportion of symptomatic individuals, the proportion of symptomatic individuals  
269 hospitalised, and the infection fatality rate from the baseline values and estimated all three  
270 adjuster parameters at approximately one, indicating no modification was needed. The  
271 maximum effect of MHS was estimated at around 0.20 (95% CI = 0.15 - 0.26) with a tight  
272 posterior distribution (Fig. S12), suggesting that MHS has reduced the risk of transmission  
273 per contact by about 20%. The model case detection was estimated at approximately 3 to  
274 19% in the Philippines (Fig. S13), although the posterior distribution of this value was broad  
275 (Fig. S12).

276

277 Scenario projections

278 We projected transmission in the near term under a range of possible scenarios and show that  
279 epidemic trajectories are highly sensitive to compliance with MHS. Moreover, allowing  
280 home workers to return onsite while maintaining MHS is estimated to have limited impact on  
281 detected cases (Figs. 5, S14-16), as well as overall incidence, hospital occupancy, and

282 mortality. If current conditions are carried forward, transmission is projected to continue at  
283 low levels and therefore should not overwhelm hospital capacity or lead to excessive deaths.  
284 Allowing students to return to school is estimated to result in a relative high increase in cases  
285 (although this result varies markedly by region, Figs. S14-16). Reducing the effectiveness of  
286 MHS by 50% is projected to lead to a steady increase in burden, whereas reducing the  
287 effectiveness of MHS by 70% or 100% is projected to lead to a major resurgence in cases,  
288 associated hospitalisations, and deaths.



289  
290 **Figure 5. Epidemic scenario projections for detected cases from the Philippines national**  
291 **model, showing high sensitivity to compliance with the Minimum Health Standards**  
292 **(MHS). Median estimates of daily confirmed cases expected under different policy changes**  
293 (left). Median estimates of daily confirmed cases (lines) with 25th to 75th centiles (dark  
294 shading) and 2.5th to 97.5th centiles (light shading) for the baseline scenario (where current  
295 conditions are carried forward) and for the scenario where MHS policy ends (right). We  
296 provide epidemic scenario projections for the regional models in Figs. S14-16.  
297

## 298 DISCUSSION

299 The combination of younger age distributions, more intergenerational contacts, changes in  
300 mobility, and changes in personal protective behaviors, appear to explain why the Philippines  
301 has sustained a relatively less severe COVID-19 outbreak than high income countries (HIC).  
302 The results from this study provide evidence that COVID-19 epidemiology in the Philippines  
303 is not inherently different from HIC. For instance, hospitalisations and infection fatality rates

304 do not appear different from HIC, as would have been expected if healthcare capacity  
305 limitations and high prevalence of comorbidities drive disease severity and mortality rates;  
306 these findings support studies in some other LMIC (e.g., India; 18) but not others where  
307 excess deaths were considered (e.g., Brazil; 19). This highlights the importance of strong  
308 surveillance and reporting systems for understanding COVID-19 epidemiology. Younger  
309 populations typical of LMIC may reduce disease burden in two ways: 1) a proportionally  
310 smaller percent of the population is elderly (compared with HIC) and at highest risk of severe  
311 disease and mortality from COVID-19 (1,2); and 2) those who survive to old age are often of  
312 higher socioeconomic status and may have a disproportionately lower infection risk  
313 compared with the general population (27). More intergenerational contacts in LMIC may  
314 also lower disease burden because elderly people often reside with family rather than in aged-  
315 care facilities, which have driven outbreak clusters in many HIC (e.g., 21). An important  
316 finding of this study is that adherence to MHS is largely responsible for limiting transmission  
317 in the Philippines while gradually easing quarantines. These results were consistent across  
318 regions that span a wide population density gradient, suggesting that this approach could also  
319 be effective in other similar settings. These types of personal protective measures will likely  
320 continue to be needed throughout 2021 and potentially 2022, depending on the speed of  
321 vaccine distribution.

322

323 Current transmission trends in the Philippines (as of 3<sup>rd</sup> March 2021) indicate that the country  
324 is maintaining low to moderate transmission, but disease resurgence remains a major threat  
325 until vaccines are widely distributed. Confirmed cases have decreased across the Philippines,  
326 plateauing at approximately 1,500-2,000 confirmed cases per day in the end of 2020 and  
327 beginning of 2021, leaving most healthcare facilities with ample ICU capacity. As people  
328 resume semi-normal activities while maintaining MHS, low levels of transmission are likely

329 to continue, but should not overwhelm the healthcare system. The results of this study  
330 support continuing a suppression approach as a bridge to broad-scale vaccination. To support  
331 this effort, we provided real-time weekly updates of the model outputs directly to policy-  
332 makers through the Department of Health COVID-19 Philippines Local Government Units  
333 Monitoring Platform (<https://fasser.ehealth.ph/covid19/>). The scenarios we considered in  
334 this study indicate that relaxing societal restrictions like work-from-home orders are not  
335 predicted to cause substantial disease resurgence. Despite these findings, low case detection  
336 (11-25%) and percentage recovered (<15%) and high sensitivity to maintaining MHS could  
337 lead to disease resurgence. Limited testing is a major obstacle for the Philippines (29) and  
338 many other LMIC and can hinder our understanding of how the epidemic is progressing and  
339 associated response measures needed to prevent disease resurgence.

340

341 There are several important limitations relevant to interpreting the model results, including  
342 modelling assumptions, data limitations, and uncertainty. Most epidemiological parameters  
343 for COVID-19 used in this study were estimated from HIC (or China). While we included  
344 “adjuster” parameters to allow the symptomatic proportion, hospitalisation, and mortality  
345 rates to vary for the Philippines (similar to 25), we assumed that other parameters were  
346 similar to HIC, which may be inaccurate. However, most parameter estimates appear  
347 reasonable given previously reported COVID-19 epidemiology in the Philippines (31). When  
348 more data becomes available from the Philippines or similar settings, the current model can  
349 be updated with new parameter values. Data issues made modelling and understanding the  
350 epidemic in the Philippines particularly challenging, although data quality has progressively  
351 improved through time. For example, additional ICU facilities were created specifically for  
352 COVID-19 in the Philippines and were not required to report usage, likely affecting these  
353 estimates, especially early in the epidemic. Similarly, daily deaths, which are often



354 considered the most reliable epidemic indicator internationally, have fluctuated markedly  
355 over the course of the epidemic, often peaking at times that appear contradictory to patterns  
356 of confirmed cases. Although reporting of daily deaths appears unreliable, cumulative deaths  
357 align reasonably well with the model projections of mortality without significant  
358 modification to the internationally estimated infection fatality rate. Finally, there is  
359 uncertainty around all model parameters, with some parameters less well constrained than  
360 others (e.g., case detection rate), which highlights the need for more epidemiological  
361 information. Future studies could build on this effort by including new, more robust data  
362 sources for model parameters and calibration targets.

363

## 364 CONCLUSION

365 One of the most critical issues facing countries around the world is determining the best  
366 strategy for ending COVID-19 transmission through the combined use of vaccines and non-  
367 pharmaceutical interventions. More than 188 countries have been affected by COVID-19  
368 with apparently less severe impacts in many LMIC compared with HIC. Our results suggest  
369 that COVID-19 epidemiology is similar in the Philippines, while the differences in impacts  
370 are likely driven by differences in age, contact structures, and policy, with MHS playing a  
371 substantial role in mitigating the outbreak. The Philippines has experienced one of the largest  
372 outbreaks of COVID-19 in the Western Pacific Region but also provides an approach that  
373 could help other countries relax interventions more safely, which remains an important  
374 strategy for countries with limited access to vaccines.

375 List of abbreviations

CDR            Case detection rate

COVID-19	Coronavirus disease 2019
HIC	High-income countries
ICU	Intensive care unit
LMIC	Low- and middle-income countries
MHS	Minimum Health Standards
NPI	Non-pharmaceutical intervention

376

377 DECLARATIONS

378 Ethic approval consent to participate

379 Not applicable.

380

381 Consent for publication

382 Not applicable.

383

384 Availability of data and materials

385 The data analysed during the current study and model code are publicly available at

386 [https://github.com/monash-emu/AuTuMN/tree/phl\\_covid\\_paper](https://github.com/monash-emu/AuTuMN/tree/phl_covid_paper).

387

388 Competing interests

389 The authors declare that they have no competing interests.

390

391 Funding

392 This work was supported by the World Health Organization Regional Office for the Western  
393 Pacific to provide modelling advice to Member States. JMS is supported by a NASA  
394 Ecological Forecasting grant (NNX17AI21G). EDLT, TRT, MRJEE, and RFRS are  
395 supported by a project grant from the Philippine Council for Health Research and  
396 Development, Department of Science and Technology, Philippines. JMT is supported by an  
397 Early Career Fellowship from the National Health and Medical Research Council  
398 (APP1142638). The funding bodies had no role in the study design, analysis, interpretation of  
399 data, and in writing the manuscript.

400

401 Authors' contributions

402 JMC, MA, RR, and JMT conceptualised and designed the work. JMC, EDLT, TRT, and  
403 RNFL acquired the data. JMC, EDLT, TRT, RFRS, RNFL, RTG, JGW, RR, and JMT  
404 interpreted the data. MRJEE, MA, and JMT created software used in this work. JMC drafted  
405 the manuscript and all authors substantially revised the draft. All authors approved the  
406 submitted version of the manuscript and are accountable for their own contributions to the  
407 work.

408

409

410

411

412

413

414

## 415 References

- 416 1. Zhang J, Litvinova M, Liang Y, Wang Y, Wang W, Zhao S, et al. Changes in contact  
417 patterns shape the dynamics of the COVID-19 outbreak in China. *Science* (80- )  
418 [Internet]. 2020 Jun 26 [cited 2020 Oct 29];368(6498):1481–6. Available from:  
419 <http://science.sciencemag.org/>
- 420 2. O’Driscoll M, Dos Santos GR, Wang L, Cummings DAT, Azman AS, Paireau J, et al.  
421 Age-specific mortality and immunity patterns of SARS-CoV-2. *Nature* [Internet]. 2020  
422 Nov 2; Available from: <http://www.nature.com/articles/s41586-020-2918-0>
- 423 3. Ma Y, Pei S, Shaman J, Dubrow R, Chen K. Role of air temperature and humidity in  
424 the transmission of SARS-CoV-2 in the United States 2. *medRxiv* [Internet]. 2020 Nov  
425 16 [cited 2020 Nov 20];2020.11.13.20231472. Available from:  
426 <https://doi.org/10.1101/2020.11.13.20231472>
- 427 4. Dowd JB, Block P, Rotondi V, Mil MC. Dangerous to claim “no clear association”  
428 between intergenerational relationships and COVID-19. *Proc Natl Acad Sci U S A*  
429 [Internet]. 2020 Oct 20 [cited 2020 Nov 25];117(42):25975–6. Available from:  
430 [www.pnas.org/cgi/doi/10.1073/pnas.2016831117](http://www.pnas.org/cgi/doi/10.1073/pnas.2016831117)
- 431 5. Brandén M, Aradhya S, Kolk M, Härkönen J, Drefahl S, Malmberg B, et al.  
432 Residential Context and COVID-19 Mortality among the Elderly in Stockholm: A  
433 population-based, observational study [Internet]. Stockholm University; 2020 [cited  
434 2020 Nov 25]. Available from: <https://cadmus.eui.eu/handle/1814/67690>
- 435 6. Richardson S, Hirsch JS, Narasimhan M, Crawford JM, McGinn T, Davidson KW, et  
436 al. Presenting Characteristics, Comorbidities, and Outcomes Among 5700 Patients  
437 Hospitalized With COVID-19 in the New York City Area. *JAMA* [Internet]. 2020  
438 May 26 [cited 2020 Nov 25];323(20):2052. Available from:  
439 <https://jamanetwork.com/journals/jama/fullarticle/2765184>
- 440 7. Rashed EA, Kodera S, Gomez-Tames J, Hirata A. Influence of Absolute Humidity,  
441 Temperature and Population Density on COVID-19 Spread and Decay Durations:  
442 Multi-Prefecture Study in Japan. *Int J Environ Res Public Health* [Internet]. 2020 Jul  
443 24 [cited 2020 Nov 25];17(15):5354. Available from: [https://www.mdpi.com/1660-](https://www.mdpi.com/1660-4601/17/15/5354)  
444 [4601/17/15/5354](https://www.mdpi.com/1660-4601/17/15/5354)
- 445 8. Kadi N, Khelfaoui M. Population density, a factor in the spread of COVID-19 in  
446 Algeria: statistic study. *Bull Natl Res Cent* [Internet]. 2020 Dec 20 [cited 2020 Dec  
447 2];44(1):1–7. Available from: [https://link-springer-](https://link-springer-com.stanford.idm.oclc.org/articles/10.1186/s42269-020-00393-x)  
448 [com.stanford.idm.oclc.org/articles/10.1186/s42269-020-00393-x](https://link-springer-com.stanford.idm.oclc.org/articles/10.1186/s42269-020-00393-x)
- 449 9. Halliday JEB, Hampson K, Hanley N, Lembo T, Sharp JP, Haydon DT, et al. Driving  
450 improvements in emerging disease surveillance through locally relevant capacity  
451 strengthening [Internet]. Vol. 357, *Science*. American Association for the  
452 Advancement of Science; 2017 [cited 2020 Dec 14]. p. 146–8. Available from:  
453 <http://apps.who.int/iris/bitstream/>
- 454 10. Oliver SE, Gargano JW, Marin M, Wallace M, Curran KG, Chamberland M, et al. The  
455 Advisory Committee on Immunization Practices’ Interim Recommendation for Use of  
456 Moderna COVID-19 Vaccine — United States, December 2020. *MMWR Morb Mortal*  
457 *Wkly Rep* [Internet]. 2021 Jan 1 [cited 2021 Mar 3];69(5152):1653–6. Available from:  
458 [http://www.cdc.gov/mmwr/volumes/69/wr/mm695152e1.htm?s\\_cid=mm695152e1\\_w](http://www.cdc.gov/mmwr/volumes/69/wr/mm695152e1.htm?s_cid=mm695152e1_w)
- 459 11. Polack FP, Thomas SJ, Kitchin N, Absalon J, Gurtman A, Lockhart S, et al. Safety and  
460 Efficacy of the BNT162b2 mRNA Covid-19 Vaccine. *N Engl J Med* [Internet]. 2020  
461 Dec 31 [cited 2021 Jan 9];383(27):2603–15. Available from:  
462 <http://www.nejm.org/doi/10.1056/NEJMoa2034577>
- 463 12. Dagan N, Barda N, Kepten E, Miron O, Perchik S, Katz MA, et al. BNT162b2 mRNA

- 464 Covid-19 Vaccine in a Nationwide Mass Vaccination Setting. *N Engl J Med* [Internet].  
465 2021 Feb 24 [cited 2021 Mar 3];*NEJMoa2101765*. Available from:  
466 <http://www.nejm.org/doi/10.1056/NEJMoa2101765>
- 467 13. Weekes M, Jones NK, Rivett L, Workman C, Ferris M, Shaw A, et al. Single-dose  
468 BNT162b2 vaccine protects against asymptomatic SARS-CoV-2 infection. *Authorea*  
469 *Prepr* [Internet]. 2021 Feb 24 [cited 2021 Mar 3]; Available from:  
470 [https://www.authorea.com/users/332778/articles/509881-single-dose-bnt162b2-](https://www.authorea.com/users/332778/articles/509881-single-dose-bnt162b2-vaccine-protects-against-asymptomatic-sars-cov-2-infection?access_token=-hDTQsMUXcCPSpdZV_Lmpg)  
471 [vaccine-protects-against-asymptomatic-sars-cov-2-infection?access\\_token=-](https://www.authorea.com/users/332778/articles/509881-single-dose-bnt162b2-vaccine-protects-against-asymptomatic-sars-cov-2-infection?access_token=-hDTQsMUXcCPSpdZV_Lmpg)  
472 [hDTQsMUXcCPSpdZV\\_Lmpg](https://www.authorea.com/users/332778/articles/509881-single-dose-bnt162b2-vaccine-protects-against-asymptomatic-sars-cov-2-infection?access_token=-hDTQsMUXcCPSpdZV_Lmpg)
- 473 14. McKee M, Rajan S. What can we learn from Israel's rapid roll out of COVID 19  
474 vaccination? [Internet]. Vol. 10, *Israel Journal of Health Policy Research*. BioMed  
475 Central Ltd; 2021 [cited 2021 Mar 3]. p. 1–4. Available from: [https://link-springer-](https://link-springer-com.stanford.idm.oclc.org/articles/10.1186/s13584-021-00441-5)  
476 [com.stanford.idm.oclc.org/articles/10.1186/s13584-021-00441-5](https://link-springer-com.stanford.idm.oclc.org/articles/10.1186/s13584-021-00441-5)
- 477 15. Li Bassi L. Allocating COVID-19 Vaccines Globally: An Urgent Need. *JAMA Heal*  
478 *Forum* [Internet]. 2021 Feb 8 [cited 2021 Mar 3];*2(2):e210105*. Available from:  
479 [https://jamanetwork-com.stanford.idm.oclc.org/channels/health-](https://jamanetwork-com.stanford.idm.oclc.org/channels/health-forum/fullarticle/2776409)  
480 [forum/fullarticle/2776409](https://jamanetwork-com.stanford.idm.oclc.org/channels/health-forum/fullarticle/2776409)
- 481 16. Gozzi NO, Bajardi P, Perra N. The importance of non-pharmaceutical interventions  
482 during the COVID-19 vaccine rollout. *medRxiv* [Internet]. 2021 Jan 9 [cited 2021 Mar  
483 3];*2021.01.09.21249480*. Available from:  
484 <https://doi.org/10.1101/2021.01.09.21249480>
- 485 17. Figueroa JP, Bottazzi ME, Hotez P, Batista C, Ergonul O, Gilbert S, et al. Urgent  
486 needs of low-income and middle-income countries for COVID-19 vaccines and  
487 therapeutics. *Lancet* [Internet]. 2021 Feb 13 [cited 2021 Mar 3];*397(10274):562–4*.  
488 Available from: <https://www.msf.ie/article/stigma-disrupted-care->  
489 [The Economist Intelligence Unit. Coronavirus vaccines: expect delays Q1 global](https://www.msf.ie/article/stigma-disrupted-care-)  
490 [forecast 2021. 2021.](https://www.msf.ie/article/stigma-disrupted-care-)
- 491 19. Hamadani JD, Hasan MI, Baldi AJ, Hossain SJ, Shiraji S, Bhuiyan MSA, et al.  
492 Immediate impact of stay-at-home orders to control COVID-19 transmission on  
493 socioeconomic conditions, food insecurity, mental health, and intimate partner  
494 violence in Bangladeshi women and their families: an interrupted time series. *Lancet*  
495 *Glob Heal* [Internet]. 2020 Nov 1 [cited 2020 Oct 26];*8(11):e1380–9*. Available from:  
496 [www.thelancet.com/lancetgh](http://www.thelancet.com/lancetgh)
- 497 20. Hogan AB, Jewell BL, Sherrard-Smith E, Vesga JF, Watson OJ, Whittaker C, et al.  
498 Potential impact of the COVID-19 pandemic on HIV, tuberculosis, and malaria in low-  
499 income and middle-income countries: a modelling study. *Lancet Glob Heal* [Internet].  
500 2020 Sep 1 [cited 2020 Oct 26];*8(9):e1132–41*. Available from:  
501 [www.thelancet.com/lancetghVol](http://www.thelancet.com/lancetghVol)
- 502 21. López L, Rodó X. The end of social confinement and COVID-19 re-emergence risk.  
503 *Nat Hum Behav* [Internet]. 2020 Jul 1 [cited 2020 Nov 25];*4(7):746–55*. Available  
504 from: <https://doi.org/10.1038/s41562-020-0908-8>
- 505 22. Haug N, Geyrhofer L, Londei A, Dervic E, Desvars-Larrive A, Loreto V, et al.  
506 Ranking the effectiveness of worldwide COVID-19 government interventions. *Nat*  
507 *Hum Behav* [Internet]. 2020 Nov 16 [cited 2020 Nov 25];*1–10*. Available from:  
508 <https://doi.org/10.1038/s41562-020-01009-0>
- 509 23. Prem K, Cook AR, Jit M. Projecting social contact matrices in 152 countries using  
510 contact surveys and demographic data. *PLoS Comput Biol*. 2017 Sep  
511 *13(9):e1005697*.
- 512 24. Haario H, Saksman E, Tamminen J. An adaptive Metropolis algorithm. *Bernoulli*.  
513 2001;

- 514 25. Laxminarayan R, Wahl B, Dudala SR, Gopal K, Mohan B C, Neelima S, et al.  
515 Epidemiology and transmission dynamics of COVID-19 in two Indian states. *Science*  
516 (80- ) [Internet]. 2020 Nov 6 [cited 2020 Dec 16];370(6517):691–7. Available from:  
517 <http://science.sciencemag.org/>
- 518 26. Prowse TAA, Purcell T, Baía-Da-Silva DC, Sampaio V, Monteiro WM, Wood J, et al.  
519 Inferred resolution through herd immunity of first COVID-19 wave in Manaus,  
520 Brazilian Amazon. *medRxiv* [Internet]. 2020 Oct 15 [cited 2020 Dec  
521 16];2020.09.25.20201939. Available from:  
522 <https://doi.org/10.1101/2020.09.25.20201939>
- 523 27. Seeman TE, Crimmins E. Social environment effects on health and aging: Integrating  
524 epidemiologic and demographic approaches and perspectives. - *PsycNET*. *Ann New*  
525 *York Acad Sci Popul Heal aging Strength dialogue between Epidemiol Demogr*  
526 [Internet]. 2001 [cited 2020 Dec 16];954:88–117. Available from: [https://psycnet-apa-](https://psycnet-apa-org.stanford.idm.oclc.org/record/2002-00194-001)  
527 [org.stanford.idm.oclc.org/record/2002-00194-001](https://psycnet-apa-org.stanford.idm.oclc.org/record/2002-00194-001)
- 528 28. McMichael TM, Currie DW, Clark S, Pogosjans S, Kay M, Schwartz NG, et al.  
529 Epidemiology of Covid-19 in a Long-Term Care Facility in King County, Washington.  
530 *N Engl J Med* [Internet]. 2020 May 21 [cited 2020 Nov 29];382(21):2005–11.  
531 Available from: [https://www-nejm-](https://www-nejm-org.stanford.idm.oclc.org/doi/full/10.1056/NEJMoa2005412)  
532 [org.stanford.idm.oclc.org/doi/full/10.1056/NEJMoa2005412](https://www-nejm-org.stanford.idm.oclc.org/doi/full/10.1056/NEJMoa2005412)
- 533 29. Nuevo CE, Sigua JA, Boxshall M, Co PAW, Yap ME. Scaling Up Capacity for  
534 COVID-19 Testing in the Philippines | Coronavirus (COVID-19) Blog Posts  
535 Collection - *BMJ Journals* [Internet]. *BMJ Journals Blog*. 2020 [cited 2020 Dec 22].  
536 Available from: [https://blogs.bmj.com/covid-19/2020/06/08/scaling-up-capacity-for-](https://blogs.bmj.com/covid-19/2020/06/08/scaling-up-capacity-for-covid-19-testing-in-the-philippines/)  
537 [covid-19-testing-in-the-philippines/](https://blogs.bmj.com/covid-19/2020/06/08/scaling-up-capacity-for-covid-19-testing-in-the-philippines/)
- 538 30. Pearson CAB, Kevin van Z, Jarvis CI, Davies N, Checchi F, Group CC-19 working, et  
539 al. Projections of COVID-19 epidemics in LMIC countries | *CMMID Repository*  
540 [Internet]. [cited 2020 May 15]. Available from:  
541 <https://cmmid.github.io/topics/covid19/LMIC-projection-reports.html>
- 542 31. Haw NJL, Uy J, Sy KTL, Abrigo MRM. Epidemiological profile and transmission  
543 dynamics of COVID-19 in the Philippines. *Epidemiol Infect* [Internet]. 2020 Sep 15  
544 [cited 2020 Oct 29];148:e204. Available from: [/core/journals/epidemiology-and-](https://core/journals/epidemiology-and-infection/article/epidemiological-profile-and-transmission-dynamics-of-covid19-in-the-philippines/FF71A51A25F004AC59885AFA4C88C48B/core-reader)  
545 [infection/article/epidemiological-profile-and-transmission-dynamics-of-covid19-in-](https://core/journals/epidemiology-and-infection/article/epidemiological-profile-and-transmission-dynamics-of-covid19-in-the-philippines/FF71A51A25F004AC59885AFA4C88C48B/core-reader)  
546 [the-philippines/FF71A51A25F004AC59885AFA4C88C48B/core-reader](https://core/journals/epidemiology-and-infection/article/epidemiological-profile-and-transmission-dynamics-of-covid19-in-the-philippines/FF71A51A25F004AC59885AFA4C88C48B/core-reader)  
547