

1 Factors Influencing AVF Dysfunction in Patients with Maintenance

2 Hemodialysis: A retrospective study

3 Yu Li[#], Wenhao Cui[#], Jukun Wang, Chao Zhang, Tao Luo

4 Department of general surgery, Xuanwu Hospital, Capital Medical University

5

6 Contributions: (I) Conception and design: T Luo, C Zhang; (II) Administrative support:

7 T Luo, C Zhang; (III) Provision of study materials or patients: Y Li; (IV) Collection

8 and assembly of data: Y Li, W Cui, J Wang; (V) Data analysis and interpretation: Y Li,

9 W Cui, J Wang, C Zhang; (VI) Manuscript writing: All authors; (VII) Final approval of

10 manuscript: All authors.

11 [#]These authors contributed equally to this work.

12

13 Correspondence to: Tao Luo. General Surgery, Xuanwu Hospital, Capital Medical

14 University, No. 45, Changchun Street, Xicheng District, Beijing, China.

15 Email: TaoLuo35@126.com

16

17

18

19

20

21

22

NOTE: This preprint reports new research that has not been certified by peer review and should not be used to guide clinical practice.

23 **ABSTRACT**

24 **Objective:** To explore factors influencing primary dysfunction of autologous
25 arteriovenous fistula (AVF) in patients with maintenance hemodialysis (MHD).

26 **Methods:** This is a retrospectively study. One hundred and twenty-one patients who
27 underwent anastomosis for AVF in our hospital Between 1st January 2016 and 31st
28 December 2018 were selected. Seventy-seven patients satisfied the inclusion criteria
29 and were included in the final analyses. Patients were divided into two groups based on
30 the function of vascular access. The comparisons of complete blood count and other
31 blood biochemical parameters were made between two groups. Factors influencing
32 AVF dysfunction were analyzed by multivariate Cox proportional hazard regression
33 model for patients with End stage renal disease (ESRD).

34 **Results:** There were significant differences in total cholesterol (TC), low density
35 lipoprotein (LDL) and serum phosphorus levels between patency and dysfunction
36 group ($P < 0.05$) of AVFs. Further multivariate COX proportional risk regression showed
37 that hypercholesterolemia and hyperphosphatemia were independent risk factors for
38 AVF dysfunction.

39 **Conclusions:** Hypercholesterolemia and hyperphosphatemia are independent risk
40 factors for primary AVF dysfunction in patients with MHD.

41 **Key Words:** Autologous arteriovenous fistula; Primary dysfunction; Survival analysis;
42 Vascular access

43

44

45 **1. Introduction**

46 Advances in medical technology have improved diagnosis and treatment of several
47 diseases and their complications. Nonetheless, mortality due to multiple chronic
48 complications have by far bettered those of other diseases, with chronic kidney disease
49 (CKD) being the most prevalent. Currently, even though kidney transplantation is the
50 most effective treatment for CKD, its application is limited by few available donors.
51 Therefore, maintenance hemodialysis (MHD) remains the best alternative for kidney
52 transplant. Unfortunately, MHD patients require essential lifetime vascular access
53 during dialysis. Autologous arteriovenous fistula (AVF) is the optimal vascular access
54 for MHD. However, possible AVF dysfunction after surgery, particular for prolonged
55 use, has limited its use. The patient had to undergo surgery again if the AVF could not
56 meet the require. This will not only increase the costs, but also lead to the waste of
57 vascular resources. Therefore, the purpose of this paper is to study the relevant factors
58 affecting AVF dysfunction.

59 We present the following article in accordance with the STROBE reporting checklist.

60 **2. Methods**

61 **2.1 Research object**

62 **2.1.1 Selection of study participants**

63 Between 1st January 2016 and 31st December 2018, 121 patients who underwent
64 vascular anastomosis for MHD at the Department of general surgery, Xuanwu Hospital,
65 Capital Medical University were selected for this study.

66 **2.1.2 Inclusion criteria**

- 67 1. Must have been 18 years or older at the time of fistula establishment.
- 68 2. Meant to undergo AVF for the first time.
- 69 3. The newly established AVF must be functioning normally, and the blood flow in
70 AVF equal or above 250ml / min.
- 71 4. Patients must undergo HMD in our hospital after AVF establishment.
- 72 5. All patients were operated by the same doctor.

73 **2.1.3 Exclusion criteria**

- 74 1. Patients unable to receive telephone follow-up for various reasons.
- 75 2. Patients with a short life expectancy due to various causes (e.g., tumors).
- 76 3. Patients who underwent renal transplantation, were lost to follow-up, or died.
- 77 4. Patients with other causes of AVF dysfunction.

78 **2.1.4 Grouping of patients**

79 A total of 121 patients were included in this study. After assessment, 77 patients
80 fulfilled the inclusion criteria and were included in the study. Patients were divided into
81 patency (n= 47) and dysfunction (n = 30) group based on whether their AVF was
82 patency or not. The protocol of this retrospective designed study conformed to the
83 ethical guidelines of the Declaration of Helsinki (as revised in 2013) and was approved
84 by the Ethics Committee of Xuanwu Hospital (No. L YS [2020]018) with waiver of
85 informed consent.

86 **2.2. Research methods**

87 **2.2.1 Surgical procedure**

88 First, the necessity and safety of operation were carefully evaluated. Thereafter, the

89 diameter of radial artery and cephalic vein for all patients were examined by ultrasound
90 before operation. End to side forearm cephalic vein-radial artery anastomosis was
91 performed in patients without contraindications under a local anesthesia. Ultrasounds
92 for radial artery and cephalic vein were repeated after surgery, but before dialysis.
93 Regular dialysis was started on non-stenosis patients. The operation was performed by
94 the same doctor.

95 **2.2.1 Assessment for successful operation and dysfunction**

96 AVF was deemed successfully if vascular pulsation was palpable, there were
97 apparent tremor, and the blood flow was above the minimum rate required for dialysis
98 (250ml/min). A functional AVF must be absence of thrombosis, stenosis, hematoma and
99 other serious complications. Briefly, AVF was deemed to have dysfunctioned if it could
100 not supply more than 200 ml/min of blood flow stably, accompanied by weak or
101 occasional tremor or heart murmur and if vascular ultrasound revealed stenosis or
102 thrombosis.

103 **2.2.2 Blood Biochemical tests**

104 The patients underwent regularly blood tests on an empty stomach before dialysis.
105 All laboratory indicators were measured at least 3 months after dialysis initiation, and
106 we collected the most recent data before AVF dysfunction (or before the study if
107 patency). In addition, samples were collected by qualified health professionals.

108 **2.2.3 Observation variables**

109 During the assessment period, we recorded the gender, age at AVF establishment,
110 BMI, primary disease of End stage renal disease (ESRD), preoperative blood pressure,

111 glycosylated hemoglobin (HbA1c), diameter of blood vessels, hemoglobin (HB),
112 albumin (ALB), total cholesterol (TC), total triglycerides (TT), low density lipoprotein
113 (LDL), creatinine (SCr), and preoperative electrolyte condition (procalcitonin PTH,
114 blood calcium, blood phosphorus, calcium phosphorus product). At the same time, AVF
115 patency was also recorded (A blood flow of 250 ml/min or more and adequate for
116 MHD).

117 **2.2.4 Statistical analyses**

118 Continuous data were expressed as mean \pm standard deviation. Comparisons between
119 groups were performed by independent t-tests if normal distribution is conformed.
120 Mann Whitney U test was used if normal distribution was not conformed. Categorical
121 variables were reported using frequency counts and percentages, with statistical
122 differences between groups performed using chi-square test. First, identify the variables
123 with difference between patency and dysfunction group by univariate analysis. Second,
124 A cox proportional hazard regression was performed, in which variables with previous
125 differences were include. “Enter” method was adopted to screen variables. It was
126 considered statistically significant if $P < 0.05$. Statistical analyses were performed with
127 SPSS 19.

128 **3. Result**

129 **3.1. Follow-up results and overall patency of fistula**

130 Generally, 121 patients with ESRD were included in our center. Of the 121 patients,
131 23 were lost to follow-up, 10 received kidney transplant, and 11 died. 77 patients who
132 met the inclusion criteria were included in the analysis. Among them, 53 (68.8%) were

133 male whereas 24 (31.2%) were female. The participants ranged from 29-82 years old,
134 with an average age of (56.5±11.3) years. Diabetic and non-diabetic nephropathy
135 accounted for 47 (61.0%) and 30 (39.0%) of ESRD cases. All AVFs were matured, and
136 the follow-up ranged from 5 to 39 month with a mean of (20.9 ± 10.1) month.
137 Meanwhile, the follow-up period of patients in patency group and dysfunction group
138 was (19.7±9.9) month and (22.8±10.2) months, respectively. Since the follow-up period
139 was non normal distribution, Mann Whitney U test was performed, and there was no
140 statistically significant difference between the patency and dysfunction groups (P =
141 0.191). During the observation period, 30 (39.0%) patients developed AVF dysfunction
142 whereas 47 (61.0%) patients did not.

143 **3.2. Comparison of baseline between patency and dysfunction group**

144 The clinical and demographic characteristics of the entire study cohort are
145 summarized in Table 1. A total of 21 study factors were included and compared between
146 the patency and dysfunction group. P-values of five variables were less than 0.1, which
147 were Gender, Phosphorus, Calcium Phosphorus product, TC and LDL. However, there
148 was no significant difference for other factors. (Table 1).

149 **Table 1. Baseline of Patency and Dysfunction Group**

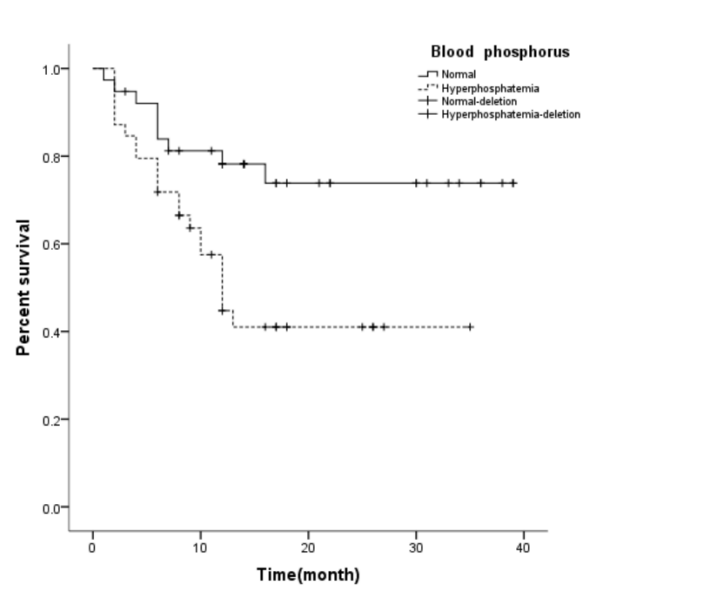
	Overall (N=77)	Patency (N=47)	Dysfunction (N=30)	Sig
Follow up time (Month)	20.9 ± 10.1	19.7 ± 9.9	22.8 ± 10.2	0.191
Female (%)	24 (31.2%)	11 (45.8%)	13 (54.2%)	0.066
Diabetic nephropathy (%)	47 (61.0%)	29 (61.7%)	18 (38.3%)	0.881

Age (year)	56.5±11.3	55.6±12.2	58.0±9.5	0.799
BMI	25.7±4.2	25.9±4.3	25.5±4.2	0.706
SBP (mmHg)	150.3±23.8	149.5±23.0	151.5±25.3	0.657
DBP (mmHg)	84.2±11.2	84.6±10.4	83.4±12.4	0.775
HbA1c (%)	5.8±1.2	5.8±0.9	5.8±1.6	0.607
PTH (pg/mL)	259.4±192.8	253.7±176.0	268.4±219.3	0.418
HB (g/L)	89.1±18.1	89.7±18.5	88.2±17.5	0.726
PLT(*10 ⁹ /L)	205.9±75.9	208.6±71.6	201.6±83.2	0.696
TT (mmol/L)	1.7±1.0	1.7±1.0	1.8±1.1	0.614
ALB (g/L)	33.2±9.0	33.4±10.5	32.8±6.2	0.496
SCr (umol/L)	671.8±246.4	649.6±239.6	706.5±256.9	0.326
Ca (mmol/L)	1.9±0.3	2.0±0.3	2.0±0.2	0.929
P (mmol/L)	1.7±0.4	1.6±0.4	1.8±0.4	0.004
Ca&P product (mmol ² /L ²)	3.3±1.0	3.1±1.0	3.6±1.1	0.078
CRP (mg/L)	10.1±16.4	10.1±17.2	10.2±15.4	0.807
Diameter of cephalic vein (mm)	2.6±0.6	2.6±0.5	2.5±0.7	0.764
Diameter of radial artery (mm)	2.5±0.4	2.6±0.3	2.5±0.5	0.392
TC (mmol/L)	4.4±1.3	4.1±1.0	4.9±1.7	0.024
LDL(mmol/L)	2.8±1.5	2.6±0.9	3.1±1.5	0.010

150 SBP: systolic blood pressure, DBP: diastolic blood pressure, HbA1c: glycosylated hemoglobin, TT:
151 total triglyceride, ALB: Albumin, SCr: creatinine, Ca: Calcium, P: Phosphorus, CRP: C-reactive
152 protein, TC: total cholesterol, LDL: Low density lipoprotein

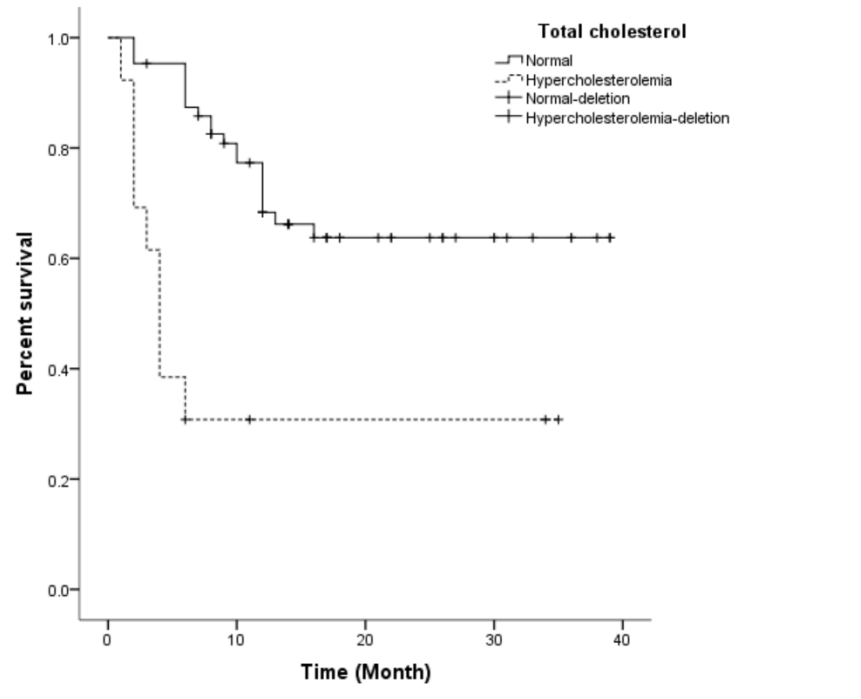
153 **3. AVF failure**

154 Figures 1 to 4 shows the survival curves with respect to phosphorus, TC, LDL, and
155 gender, respectively. Log rank tests suggested statistically significant differences in all
156 survival curves, and the Log Rank P value was 0.007, 0.001, 0.012, 0.013, respectively.
157 Therefore, phosphorus, TC, LDL, Gender, HbA1c and age were included in the
158 multivariate cox proportional hazard regression, which revealed that
159 hypercholesterolemia and hyperphosphatemia were independent risk factors for AVF
160 dysfunction ($P < 0.05$) (Table 2).



161

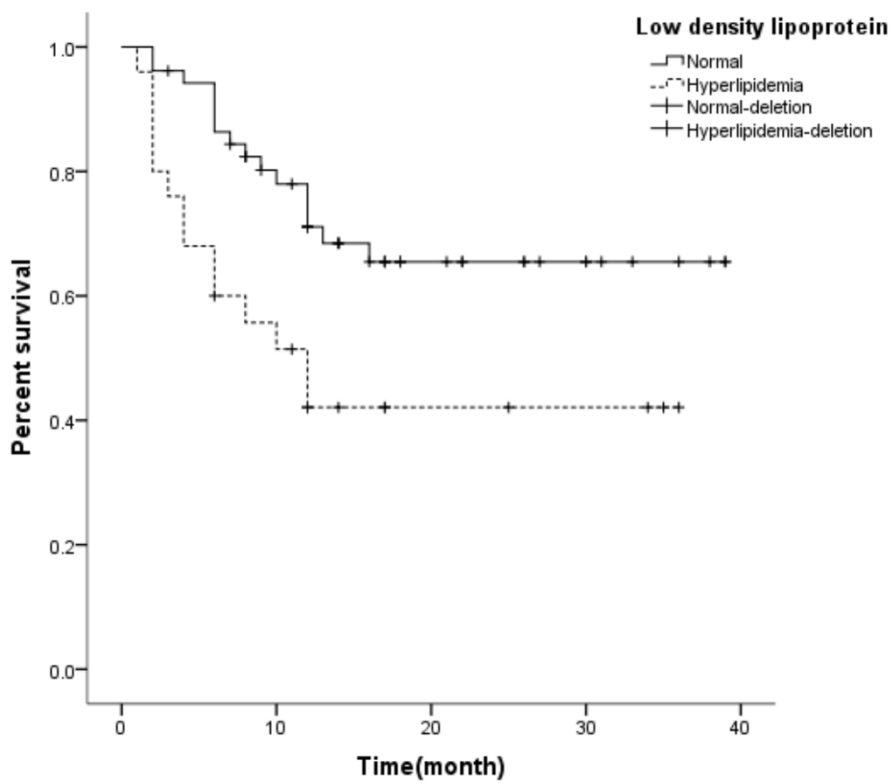
162 Fig. 1 AVF survival curves for patients with hyperphosphatemia and normal blood phosphorus



163

164

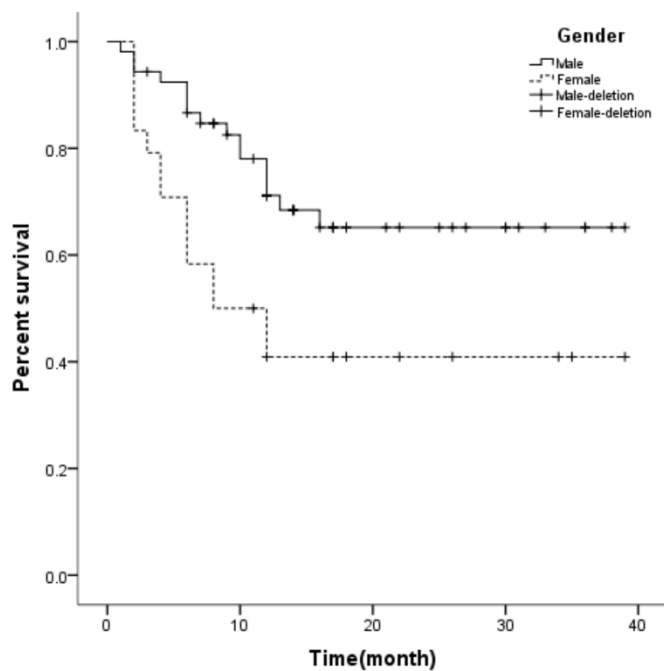
Fig. 2 AVF survival curves for patients with hypercholesterolemia and normal TC



165

166

Fig. 3 AVF survival curves for patients with increased LDL and normal LDL



167

168

Fig. 4 AVF survival curves for patients with male and female

169

Table 2. Multivariate Cox proportional hazard regression analysis

Risk factor	<i>P value</i>	RR value	95%CI	
			lower limit	upper limit
Phosphorus	0.032	2.389	1.078	5.249
TC	0.043	3.115	1.037	9.360
LDL	0.589	1.288	0.514	3.229
Gender	0.278	1.573	0.694	3.567
HbA1c	0.641	0.796	0.305	2.076
age	0.399	1.460	0.606	3.517

170

4. Discussion

171

Factors influencing development of AVF

172 Over the past 50 decades, there has been a growing consensus of "fistula first"
173 principle in patients with MHD. The guidelines, published in 1997 (1) and revised in
174 2003 (2) and 2006 (3), together with the "fistula first" principle proposed in 2003 (4),
175 suggests that AVF is the optimal choice. Although AVF is associated with thrombosis,
176 blood steal syndrome and aneurysm, incidence of these complications are relatively low
177 for AVF nowadays. Many factors, such as blood calcium, phosphorus and lipid (5), CRP
178 (6), SCr; vascular diameter (7) and preoperative radial artery calcification (RAC) (8),
179 can not only be caused by renal failure (9) but also affect the patency of AVFs. Although
180 some studies have reported some of these risks, many have not been exhaustive.

181 Since the "fistula first" principle in 2003 (10), clinicians have increasingly preferred
182 AVF for HMD. However, studies show that the AVF failure ranges between 15% and
183 22% (2,11). Currently, little emphasis has been putted on preoperative internal
184 environment. Recent studies suggest that the internal environmental factors of AVFs
185 are important (12). In this study, we found TC and phosphorus to be independent risk
186 factors for AVF dysfunction.

187 **4.1 Age**

188 Most elderly patients present with other underlying diseases. As such, they may not
189 harness optimal benefits from certain disease interventions, evidenced by short survival
190 rate (13). In a separate but related study, it was found that the advantages of AVF over
191 central venous catheter (CVC) gradual decreases with age. However, the disadvantages
192 of AVF are gradually amplified. As such, CVC usage may be preferred in elderly
193 patients. Meanwhile, the study shows that among the patients who have die of CKD,

194 35% of them were on AVF (14). Therefore, the huge loss is not worthy undisputedly
195 embracing "fistula first". Combined with findings of this study, age is not an
196 independent risk factor for AVF dysfunction. Generally, age of patients does not affect
197 the primary patency rate of AVF, but affect the long-term benefits. At the same time,
198 from an economic point of view, AVF use for dialysis in elderly patients may be
199 counterproductive. In a related study, K. hall et al. (15) established a Markov model
200 from retrospective data to analyze the input-output ratio of patients with AVF,
201 arteriovenous graft (AVG) and CVC. They found the input-output of AVF against AVG
202 and CVC gradually declines with patients' age. Thamer M et al. (16) also showed that
203 in the whole age population, the average annual cost of maintaining AVF patency for
204 2.5 years is \$7871 whereas that of patients with primary dysfunction is \$13282 per year.
205 So, the benefits of AVF in elderly patients are sub-optimal.

206 **4.2 Serum total cholesterol (TC)**

207 Blood lipid plays an important role in the patency of arteriovenous fistula. This
208 research shows that TC is an independent risk factor for AVF dysfunction (17).
209 Generally, high-density lipoprotein (HDL) is a protective factor for AVF dysfunction.
210 Wang et al. (18) demonstrated that higher TT increases the risk of AVF dysfunction. In
211 this research, TC was an independent risk factor for AVF, but TT was not. This
212 discrepancy may however be attributed to our small sample size. Mechanistically,
213 hyperlipidemia activates vascular endothelial growth factor A/matrix
214 metalloproteinase-9 signaling pathway, which causes intimal hyperplasia and
215 atherosclerosis (16).

216 **4.3 Blood phosphorus**

217 Many studies have implicated blood phosphorus for AVF dysfunction. Moon and Lee
218 (19) showed that hyperphosphatemia (blood phosphorus $> 5.5\text{mg/ml}$) has a strong
219 positive correlation with AVF dysfunction within 1 year of its induction. In a related
220 study, Zhou Min and Lu Fangping (20) found that patients with hyperphosphatemia
221 were more likely to develop AVF dysfunction than their normal counterparts. They
222 found hyperphosphatemia to be an independent risk factor for AVF dysfunction,
223 consistent with our findings. Continuous exploration of vascular access dysfunction has
224 drawn interest in vascular calcification. Blood phosphorus has been implicated for
225 vascular calcification. Here, prolonged hyperphosphatemia transforms vascular smooth
226 muscle cells (VSMC) into osteoblast like cells (21). This induces calcium and
227 phosphorus deposition on the inner wall of blood vessels, thus causing vascular
228 calcification.

229 **4.4 Serum creatinine**

230 The current consensus is that AVF is the most preferred vascular access in dialysis
231 patients. However, the timing of fistula establishment remains unclear. Y Wang, et al.
232 (22) opined that before AVF surgery, vascular ultrasound and other examinations should
233 be performed and evaluated, respectively. At the same time, Stolic et al. did not find
234 SCr as an independent risk factor for AVF dysfunction (23). Based on our findings, SCr
235 is not an independent risk factor for AVF dysfunction. In other words, the renal function
236 (serum creatinine) at the initiation of dialysis does not strongly impact on the primary
237 patency rate. As such, clinicians should not only consider the level of SCr, but also other

238 factors before initiation of MHD.

239 **4.5 Vessel diameter**

240 This study also investigated the effect of vascular (arterial and venous) diameters on
241 AVF primary dysfunction. Even though Misskey Jonathan and hamidzadeh Ramin (24)
242 found radial arterial diameter ($< 2.1\text{mm}$) to be an independent risk factors for AVF
243 dysfunction. However, we report dissimilar findings: Vascular diameter not to be an
244 risk factor for AVF dysfunction, probably due to strong emphasis on vascular diameter
245 before surgery in our center.

246 **5. Conclusion**

247 Findings of this study implicate TC and phosphorus as independent risk factors for
248 arteriovenous fistula dysfunction, and these factors can reduce the primary patency rate.
249 Therefore, before the operation, patients should be assessed appropriately. Currently,
250 there are many measures to correct hypercholesterolemia, among which the most
251 commonly used is lipid-lowering drugs. And the results are satisfactory. However, it is
252 relatively difficult to correct hyperphosphatemia. The main treatment measures were
253 “3D principle”, including diet, dialysis and drugs (25). But the effect is unsatisfactory.
254 In recent years, great progress has been made in the mechanism of hyperphosphatemia
255 leading to intimal hyperplasia in AVFs. Blood phosphorus will induce phenotype
256 transformation of VSMC, and eventually lead to intimal hyperplasia through complex
257 signaling pathways (26). Therefore, to identify and block the signaling pathway may
258 block intimal hyperplasia, which is very promising. The patients will be poised to
259 benefit optimally after AVF.

260 6. Limitation

261 We acknowledge that our study analyzes data from a single center and may not be
262 avoid of selection bias. Being a retrospective study with a small sample size, we cannot
263 exclude other confounding. Due to the limitation of our dataset, 23 were lost to follow-
264 up for various reasons, 10 received kidney transplant, and 11 died, which may lead to
265 the deviation of the results. Power test was also performed, however, a larger sample
266 size study is needed in the future. The relationship between a certain factor and AVF
267 dysfunction needs further study as well.

268

269 **Acknowledgement:**

270 **Funding:** Beijing Hospitals Authority Youth Programme (QMS20200803 to C.Z)

271 **Footnote:**

272 **Reporting Checklist:** The authors have completed the STROBE reporting checklist.

273 **Conflicts of Interest:** All authors have completed the ICMJE uniform disclosure form.

274 The authors have no conflicts of interest to declare.

275 **Ethical Statement:** The authors are accountable for all aspects of the work in ensuring
276 that questions related to the accuracy or integrity of any part of the work are
277 appropriately investigated and resolved. The study protocol conformed to the ethical
278 guidelines of the Declaration of Helsinki (as revised in 2013), and the Ethics Committee
279 of Xuanwu Hospital approved this study (No.L YS[2020]018). Because of the
280 retrospective nature of the research, the requirement for informed consent was waived.

281

282 **Reference**

- 283 [1] NKF-DOQI clinical practice guidelines for vascular access. National Kidney
284 Foundation-Dialysis Outcomes Quality Initiative. Am J Kidney Dis 1997;30(4
285 Suppl 3):S150-S191.
- 286 [2] NKF-K/DOQI Clinical Practice Guidelines for Vascular Access: update 2000. Am
287 J Kidney Dis 2001;37(1 Suppl 1):S137-S181.
- 288 [3] Vascular Access Work Group. Clinical practice guidelines for vascular access. Am
289 J Kidney Dis 2006;48 Suppl 1:S248-S273.
- 290 [4] Hemodialysis Adequacy 2006 Work Group. Clinical practice guidelines for
291 hemodialysis adequacy, update 2006. Am J Kidney Dis 2006;48 Suppl 1:S2-S90.
- 292 [5] C Ren , W Lu,X Yang, et al. Analysis on the application and the related factors of
293 vascular access at initiation of hemodialysis in Shanghai. Chinese Journal of Blood
294 Purification 2016, 15 (06): 344-347. China
- 295 [6] Zadeh M K , Mohammadipour S , Omrani Z . Correlation between CRP and early
296 failure of arteriovenous fistula (AVF). Medical Journal of the Islamic Republic of
297 Iran 2015, 29(1):219-219.
- 298 [7] Khavanin Zadeh M, Gholipour F, Naderpour Z, Porfakharan M. Relationship
299 between vessel diameter and time to maturation of arteriovenous fistula for
300 hemodialysis Access. Int J Nephrol 2012;2012:942950.
- 301 [8] Z Chen, H Zeng, F Huang. et al. Effect of radial artery calcification on survival of
302 arteriovenous fistula and the patients in endstage renal disease patients. China
303 Medical Abstracts(Internal Medicine) 2019,36(01):52. China

- 304 [9] Yan Y , Ye D, Yang L, et al. A meta-analysis of the association between diabetic
305 patients and A VF failure in dialysis. *Ren Fail* 2018;40(1):379-383.
- 306 [10]National Kidney Foundation (2015). KDOQI Clinical Practice Guideline for
307 Hemodialysis Adequacy: 2015 update. *American journal of kidney diseases : the*
308 *official journal of the National Kidney Foundation*,66(5), 884–930.
- 309 [11]He C, Zhang X. *Renal replacement therapy*. Shanghai Science and Technology
310 Education Press, 2005.152-154.
- 311 [12]Wen M , Li Z , Li J , et al. Risk factors for primary arteriovenous fistula dysfunction
312 in hemodialysis patients: A retrospective survival analysis in multiple medical
313 centers. *Blood Purification* 2019:1-7.
- 314 [13]Lee Timmy, Allon Michael. Reassessing Recommendations for Choice of Vascular
315 Access. *Clin J Am Soc Nephrol* 2017, 12: 865-867.
- 316 [14]Woo K, Lok CE. New Insights into dialysis vascular access: What is the optimal
317 vascular access type and timing of access creation in CKD and dialysis patients?
318 *Clin J Am Soc Nephrol* 2016;11(8):1487-1494.
- 319 [15]Hall Rasheeda K, Myers Evan R, Rosas Sylvia E et al. Choice of hemodialysis
320 access in older adults: A cost-effectiveness analysis. *Clin J Am Soc Nephrol*
321 2017;12(6):947-954.
- 322 [16]Thamer M, Lee TC, Wasse H, et al. Medicare Costs Associated With Arteriovenous
323 Fistulas Among US Hemodialysis Patients. *Am J Kidney Dis* 2018;72(1):10-18.
- 324 [17]T Cui, R Zhang, F Liu, et al. Effect of diabetes mellitus on early dysfunction of
325 arteriovenous fistula in patients with end-stage renal disease. *Journal of Sichuan*

- 326 University (Medical Edition) 2012,43 (03): 438-441. China
- 327 [18]Z Li, W Wang, Y Jiang, et al. Analysis of influencing factors of failure of
328 autogenous arteriovenous fistula in maintenance hemodialysis patients. Chinese
329 Journal of Integrated Traditional and Western Nephrology. 2014,15(11):961-964.
330 292 China
- 331 [19]Moon JY , Lee HM, Lee SH, et al. Hyperphosphatemia is associated with patency
332 loss of arteriovenous fistula after 1 year of hemodialysis. Kidney Res Clin Pract
333 2015;34(1):41-46.
- 334 [20]M Zhou, F Lu. Effect of hyperphosphatemia on patency rate after reoperation of
335 autogenous arteriovenous fistula dysfunction. Chinese Journal of medicine
336 2018,98 (42): 3406-3410. China
- 337 [21]Shimokado A, Sun Y , Nakanishi M, et al. Smad3 plays an inhibitory role in
338 phosphate-induced vascular smooth muscle cell calcification.Exp Mol Pathol
339 2014;97(3):458-464.
- 340 [22]Y Wang, C Ye, Z Jin. Chinese expert consensus on vascular access for hemodialysis
341 (1st Edition). Chinese Journal of Blood Purification 2014, 13 (8), 549-558. China
- 342 [23]Stolic Radojica V ,Trajkovic Goran Z,Kostic Mirjana M et al. Factors affecting the
343 patency of arteriovenous fistulas for hemodialysis: Single center 307
344 experience.[J] .Hemodial Int, 2018, 22: 328-334.
- 345 [24]Misskey J, Hamidizadeh R, Faulds J, et al. Influence of artery and vein diameters
346 on autogenous arteriovenous access patency. J Vasc Surg 2020;71(1):158-172.
- 347 [25]Wei Chen, Xueqing Yu. Challenges and advances in the management of

- 348 hyperphosphatemia in dialysis patients with chronic kidney disease. [J]. Chinese
349 Journal of Nephrology, 2018, 34(11): 867-871.
- 350 [26]Hénaut L, Mary A, Chillon JM, et al. The Impact of Uremic Toxins on Vascular
351 Smooth Muscle Cell Function. Toxins (Basel). 2018;10(6):218.