

Impact of tiered restrictions on human activities and the epidemiology of the second wave of COVID-19 in Italy

Mattia Manica ^{1,2}, Giorgio Guzzetta ^{1,2*}, Flavia Riccardo ³, Antonio Valenti ⁴, Piero Poletti ^{1,2}, Valentina Marziano ^{1,2}, Filippo Trentini ^{1,2}, Xanthi Andrianou ^{3,5}, Alberto Mateo Urdiales ^{3,6}, Martina del Manso ^{3,6}, Massimo Fabiani ³, Maria Fenicia Vescio ³, Matteo Spuri ³, Daniele Petrone ³, Antonino Bella ³, Sergio Iavicoli ^{4,#}, Marco Ajelli ^{7,8,#}, Silvio Brusaferrò ^{3,#}, Patrizio Pezzotti ^{3,#}, Stefano Merler ^{1,2,#}

¹ Bruno Kessler Foundation, Trento, Italy

² Epilab-JRU, FEM-FBK Joint Research Unit, Trento, Italy

³ Istituto Superiore di Sanità, Rome, Italy

⁴ Italian Workers' Compensation Authority (INAIL), Department of Occupational and Environmental Medicine, Epidemiology and Hygiene, Rome, Italy

⁵ Cyprus University of Technology, Limassol, Cyprus

⁶ European Programme for Intervention Epidemiology Training (EPIET), European Centre for Disease Prevention and Control (ECDC), Stockholm, Sweden

⁷ Department of Epidemiology and Biostatistics, Indiana University School of Public Health, Bloomington, United States

⁸ Laboratory for the Modeling of Biological and Socio-technical Systems, Northeastern University, Boston, United States

* corresponding author: Giorgio Guzzetta guzzetta@fbk.eu

joint senior authors

Abstract

To counter the second COVID-19 wave in autumn 2020, the Italian government introduced a system of physical distancing measures organized in progressively restrictive tiers (coded as yellow, orange, and red) and imposed on a regional basis according to epidemiological risk assessments. The individuals' attendance to locations outside the residential settings was progressively reduced with tiers, but less than during the national lockdown against the first COVID-19 wave in the spring. The reproduction number R_t decreased below the epidemic threshold in 85 out of 107 provinces after the introduction of the tier system, reaching average values of about 0.99, 0.89 and 0.77 in the yellow, orange and red tier, respectively. We estimate that the reduced transmissibility resulted in averting about 37% of the hospitalizations between November 5 and November 25, 2020. These results are instrumental to inform public health efforts aimed at preventing future resurgence of cases.

Introduction

A second wave of COVID-19 has been spreading in all European countries in the fall of 2020¹. In Italy, the daily incidence of confirmed cases rose slowly from 2 to 3 per 100,000 over the month of September, and then accelerated rapidly in October reaching a peak of 58 per 100,000 by November 13¹. The second wave resulted in about 1.2 COVID-19-related deaths per 100,000 per day at the beginning of December; a value comparable to the first wave (1.35 per 100,000). The mortality rate has then declined to a stable plateau of about 0.8 deaths per 100,000 per day throughout the month of January^{1, 2}. At the subnational level, a high geographical heterogeneity in the impact of the second wave was observed, with over four-fold variations across regions in the standardized mortality rate in October and November³.

To counter the rapid rise in SARS-CoV-2 infections observed since the end of September, the Italian government has progressively increased restrictions⁴⁻⁷ aimed at promoting physical distancing⁴⁻⁷. Between October 14 and November 5, 2020, interventions were uniformly enacted at the national level. These measures initially extended the mandatory use of face mask to outdoor spaces (previously mandated only

indoors) and targeted a reduction of opening hours of bars and restaurants and a reduction of capacity of recreational venues such as cinemas and theaters. Shortly after, recreational venues and sports centers were closed altogether, and distance learning for at least 75% of the time was introduced in high schools. Starting from November 6, a three-tiered restriction system was introduced on a regional basis. A tier was assigned to each of the 21 regions and autonomous provinces (AP) by the Ministry of Health after an epidemiological risk assessment based on the combination of quantitative indicators on: i) the level of transmission, ii) the burden on older age groups and healthcare, and iii) public health resilience⁷. The sets of measures in the three tiers were labeled according to a color scheme: yellow, orange, and red, corresponding to increasing levels of restrictions. The tiered measures involved further limitations to retail and service activities, individual movement restrictions (ranging from a curfew between 10pm and 5am to a full-day stay-home mandate with a ban on inter-regional mobility), and reinforced distance learning in schools (see Table 1 for a complete list). The assignment of tiers to regions was updated according to frequent reassessments of the epidemiological situation.

The assessment of the effectiveness of the adopted interventions is critical to guide future decisions for the management of COVID-19 in Italy as well as other countries. In this work, we leverage the data from the Italian COVID-19 integrated surveillance system and publicly available mobility data⁸ to evaluate the impact of the three-tiered regional restriction system on human activities, SARS-CoV-2 transmissibility, hospitalization burden in Italy.

Results

Impact of tiered restrictions on human activities. The number of visitors in locations outside the residential settings decreased progressively increasing with the tier level (Figure 1 and Table 2). The most affected locations were those related to retail and recreation activities, as well as public transportation means, where, in the red tier, an over 50% reduction of presence was recorded with respect to pre-pandemic values (January 5 – February 6, 2020). The decline of attendance rates in these settings were mirrored by

an increase of the time spent at home from 6.9% (95%CI: 4.2-10.6%) above the pre-pandemic values before the setup of tiered restrictions, to up to 17.7% (95%CI: 15.8-20.6%).

Impact of tiered restrictions on transmissibility. The temporal dynamics of the net reproduction number R_t in November 2020 were highly variable by region and province (Figure 2). For the purpose of this analysis, we group regions by the strictest tier assigned over the study period (November 6-25, 2020). In the week October 30-November 5, we estimated that the mean R_t for regions with maximum tier yellow, orange and red were 1.22 (95%CI 1.13-1.28), 1.35 (95%CI 1.17-1.53) and 1.40 (95%CI 1.21-1.53), respectively (Figure 3 and Appendix). These levels of SARS-CoV-2 transmissibility accounted for the imposition of national restrictions since October 14. We estimated that the introduction of the yellow tier resulted in a mean absolute R_t reduction of 0.22 (95%CI: 0.10 - 0.35) from the previous level. On top of this reduction, we estimated an additional reduction of 0.24 (95%CI: 0.09 - 0.39) for the orange tier, and of 0.40 (95%CI: 0.26 - 0.55) for the red tier (see Appendix). The net reproduction number between November 19 and 25 fell below the epidemic threshold in 42 of 46 (91%) provinces in the red tier, in 33 of 41 (81%) provinces in the orange tier and only in 10 of 20 provinces in the yellow tier (50%), despite the latter starting from much lower R_t values. These results were robust when aggregating the analysis at the regional, rather than provincial, level, when considering estimates of the reproduction number from hospitalized cases, when considering a different grouping of regions across tiers, and when using alternative lengths of the observation periods for R_t (see Appendix).

Impact of tiered restrictions on hospital admissions

We estimated the effect of imposing tiered restrictions on the cumulative hospital admissions over the study period (November 6 – 25, 2020) and on the daily hospitalization incidence at the end of the study period by comparing model outcomes under different sets of measures with respect to the observed values (Figure 4). The observed cumulative incidence of hospital admissions over the study period was 62.7, 66.3 and 83.8 per 100,000 in regions with maximum tier yellow, orange and red respectively, corresponding to

44,350 hospitalizations in the whole country. If the national restrictions that were in place on November 5 had been maintained until November 25, we estimate a cumulative incidence of hospital admissions of 75.6 (95%CI: 71.3 – 79.6), 107.4 (95%CI: 103.2 – 111.9) and 141.7 (95%CI: 137.8 – 145.9) per 100,000 in the yellow, orange and red tier respectively, resulting in a total of 70,063 (95%CI: 68,663-71,550) hospital admissions (Figure 4a). Thus, we estimate that the measures introduced by the government avoided about 36.7% (95%CI: 35.4-38%) of the overall hospitalizations in the considered period (i.e., slightly under 26,000), with a reduction of 16.9% (95%CI: 12.0-21.2%) in the yellow tier, 38.3% (95%CI: 35.7-40.7%) in the orange tier and 40.8% (95%CI: 39.2-42.5%) in the red tier. If regions in the yellow tier had been assigned to the orange or red tier, 14.7 (95%CI: 12.2-17.3) or 21.2 (95%CI: 19.0-23.3) hospital admissions per 100,000 could have been avoided respectively with respect to the observed values. If regions in the orange tier had been assigned to the red tier, 9.8 (95%CI: 7.8-11.9) hospital admissions per 100,000 could have been avoided with respect to the observed values.

If the tiered system had not been adopted, a general increase of the daily hospital admission incidence between November 6 and November 25 would have occurred; for example, in the red tier regions/APs the incidence would have been risen from 5.3 per 100,000 per day on November 5 to 9.5 (95%CI: 9.1-10.0) per 100,000 per day on November 25 (Figure 4b). The adoption of the yellow tier maintained roughly the same incidence level observed on November 5, while the orange and red tiers resulted in a consistent decline of the daily incidence.

Discussion

The three-tiered restriction system introduced by the Italian government since November 6 on a regional basis has had a clear impact on both human activities and SARS-CoV-2 transmission. For what concerns human activities, we found a significant and progressive reduction of the time spent outside of home in all locations recorded by the Google mobility data⁸, especially those associated with recreational and retail activities and public transport. This is not surprising, considering that the restrictions mainly acted on social gathering venues that had not been targeted by previous interventions, such as bars, restaurants and

shopping malls, and that they introduced limitations to individual movements. Reductions of attendance in schools (data not available in the Google mobility data) and workplaces may have contributed to the reduction in public transport use. However, we found that the activity reduction in all locations outside of home was far from that observed during the nation-wide lockdown imposed to counter the first wave, even in the strictest tier where a stay-home mandate was in place. As a comparison, during the lockdown the time spent in retail/recreational locations and in transit stations had dropped by over 75% with respect to the pre-pandemic values (against 50% in the red tier), and the time spent at home had increased by 27% (against 17% in the red tier)⁸.

On the epidemiological side, we found that the yellow tier reduced R_t to values close to 1, while orange and red tiers brought the reproduction number significantly below the epidemic threshold, even though starting from higher values. Overall, provinces in the yellow tier achieved a mean 18% reduction of R_t with respect to the transmission level determined by the preceding nationwide restrictions, while a reduction of 34% and 45% was observed in the orange and red tier respectively (Appendix). These results remained robust with respect to a number of sensitivity analyses, which considered a different type of data for the computation of R_t (hospitalized cases instead of symptomatic cases), a different level of geographic aggregation (regional instead of provincial), a different categorization of regions to account for changes over time in the assigned tier, and different windows of observations for R_t (Appendix). At the national level, the resulting reduction in transmissibility averted almost 26,000 hospital admissions between November 6 and November 25, 2020, with larger gains in regions assigned to stricter tiers. We note, however, that the estimated reduction in cumulative hospitalizations for the considered period does not fully represent the extent of the beneficial effects of the tier system. Indeed, the lower hospitalization incidence at the end of the projection period would extend its benefits on averted hospitalizations well after that date.

We acknowledge that during periods of high infection incidence there may be significant changes in notification rates due to the saturation of tracing and testing capabilities, and these changes may lead to biases in the estimates of the reproduction numbers^{9,10}. During the second wave of COVID-19 in Italy, the largest increase in the number of cases occurred in October; therefore, we expect the notification rate to

have stabilized before the period considered for R_t (October 30 – November 25). In addition, hospital admissions rates are less subject to changes compared with notification rates of symptomatic cases, and we found similar results when estimating transmissibility from hospital admissions. We also note that nationwide restrictions implemented to counter the second wave were scaled up in three different occasions (on October 14, 19 and 25⁴⁻⁶) before adopting the three-tiered regional system since November 6, 2020⁷. It is therefore possible that part of the decrease of R_t after November 6 is associated to a residual effect of earlier interventions. Previous studies have shown that most of the reduction in R_t takes place within about two weeks after the introduction of restrictions¹¹. Therefore, this limitation should not have a major effect on our conclusions.

Our analysis is not suitable to pinpoint which specific restrictions maximized the reduction in transmissibility^{12,13}, to disentangle the effect of spontaneous behavioral changes, and could not capture possible cross-regional effects. For example, provinces in the yellow tier sharing borders with regions in the orange or red tier may have indirectly benefited from a reduction of inter-regional mobility or that residents were more prone to self-imposing restrictions to their activity patterns.

Conclusion

We quantified the epidemiological effect of the three-tiered system of restrictions adopted in Italy on a regional basis, showing that stricter restrictions (orange and red tiers) are needed to lower the incidence and that the most permissive tier (yellow) was sufficient to bring the reproduction number at approximately the epidemic threshold. We also showed that the tier system resulted in a much lower impact on human activities compared to lockdown. These insights are essential to support efforts to control the incidence of COVID-19 and to plan the response to possible future resurgence of cases, which could be also fueled by the emergence of more transmissible or virulent variants.

Methods

Restrictions data. We collected information from official sources on the measures taken by the Italian government between October 14^{4-7, 14-18} and November 25. Eleven of 21 regions and APs maintained the same tier from November 6 throughout the study period; for all remaining regions except Abruzzo, the highest tier corresponded also to the one which has been maintained for the longest time (see Figure 1 and Appendix).

Mobility data. We retrieved data from the Google community mobility reports at the provincial level [8] over the period October 14 – November 25. These data represent the daily number of visitors at different locations, normalized to the value computed between January 5 and February 6, 2020 (pre-pandemic value). The locations reported in the data are categorized as follows: Grocery/Pharmacy (grocery markets, food warehouses, farmers markets, specialty food shops, drug stores, and pharmacies); Parks (local parks, national parks, public beaches, marinas, dog parks, plazas, and public gardens); Transit stations (public transport hubs such as subway, bus, and train stations); Retail/Recreation (restaurants, cafes, shopping centers, theme parks, museums, libraries, and movie theaters); and Workplaces (places of work). In addition, human activity in Residential (places of residence) is reported in terms of the mean duration of stay in these locations.

Epidemiological data. Data to estimate the reproduction numbers and hospital admissions were collected by regional health authorities and collated by the Istituto Superiore di Sanità (Italian National Institute of Health) within an integrated surveillance system (described in ¹⁹). As a measure of transmissibility, we considered the net reproduction number $R_t^{9-11, 20}$. The posterior distribution of R_t at any time point t was estimated by applying the Metropolis-Hastings MCMC sampling to a likelihood function defined as follows:

$$\mathcal{L} = \prod_{t=1}^T P \left(C(t); R_t \sum_{s=1}^T \varphi(s) C(t-s) \right)$$

where

- $P(k; \lambda)$ is the probability mass function of a Poisson distribution (i.e., the probability of observing k events if these events occur with rate λ).

- $C(t)$ is the daily number of new cases having symptom onset at time t ;
- R_t is the net reproduction number at time t to be estimated;
- $\varphi(s)$ is the probability distribution density of the generation time evaluated at time s .

As a proxy for the distribution of the generation time, we used the distribution of the serial interval, estimated from the analysis of contact tracing data in Lombardy²¹, i.e., a gamma function with shape 1.87 and rate 0.28, having a mean of 6.6 days. We computed R_t for each of the 107 Italian provinces; as a sensitivity analyses, we computed R_t also for the 21 regions/APs and from the number of daily cases by date of hospital admission.

Impact of tiered restrictions on human activities. In order to assess the impact of tiered restrictions on human activities, we applied the following linear mixed model to mobility data for each location category in the Google reports [8]:

$$M_{p,l} = \beta_0 + \beta_1 L_p^{yellow} + \beta_2 L_p^{orange} + \beta_3 L_p^{red} + a_r + b_{r,p} + \varepsilon_{p,T}$$

where

- $M_{p,l}$ represents the mobility value (i.e., the change in the number of visitors in non-residential locations, or the change in the time spent at home, normalized to the pre-pandemic values) in each of the 107 Italian provinces (p), averaged over the days in which a given tier l was enforced;
- L_p^l is a binary variable set to 1 when the considered value $M_{p,l}$ belongs to a province with tier l , and 0 otherwise;
- $\beta_0, \beta_1, \beta_2$ and β_3 are model parameters, with β_0 representing the mean mobility across Italian provinces during the period October 14-November 5 (i.e., before the tiered restriction system);
- a_r and $b_{r,p}$ are random effects, assumed to be normally distributed. a_r allows random deviations from the mean among regions; $b_{r,p}$ allows random deviations from the mean regional mobility among provinces within a region;
- $\varepsilon_{p,T}$ is random noise assumed to be normally distributed.

Impact of tiered restrictions on transmissibility. We applied a linear mixed model on the estimated SARS-CoV-2 transmissibility (i.e., the mean value of R_t):

$$Y_{p,T} = \beta_0 + \beta_1 X_p^{orange} + \beta_2 X_p^{red} + \beta_3 Z_T + \beta_4 X_p^{orange} Z_T + \beta_5 X_p^{red} Z_T + a_r + b_{r,p} + \varepsilon_{p,T}$$

where

- $Y_{p,T}$ represents the mean value of R_t in each of the 107 Italian provinces (p), averaged over two possible time periods (T): October 30 to November 5 (i.e., when nationwide interventions were still in place) or November 19 to November 25 (i.e., two to three weeks after the introduction of the tier system). In a sensitivity analysis, the length of the time periods is varied between 3 and 12 days (Appendix);
- X_p^l is a binary variable set to 1 if province p belongs to a region with maximum assigned tier l , and 0 otherwise;
- Z_T is a binary variable set to 0 if T =October 30 – November 5 and to 1 if T =November 19 – November 25;
- $\beta_0, \beta_1, \beta_2, \beta_3, \beta_4$, and β_5 are model parameters, with β_0 representing the average value of R_t during the period October 30 – November 5 for provinces with maximum tier yellow;
- a_r and $b_{r,p}$ are random effects, assumed to be normally distributed: a_r allows random deviations from the mean R_t among regions, $b_{r,p}$ allows random deviations from the regional mean R_t among provinces within a region;
- $\varepsilon_{p,T}$ is random noise assumed to be normally distributed.

Impact of tiered restrictions on hospital admissions. For each region, we projected the curve of daily hospitalizations using the renewal equation²² under alternative assumptions on the implemented interventions. The number of new hospital admission $H_i(t)$ in a region i was given by

$$H_i(t) = \text{Pois} \left(R_i(t) \sum_{s=1}^t \varphi(s) h_i(t-s) \right)$$

where

- $Pois(\lambda)$ is a Poisson sample with rate λ ;
- $h_i(t)$ is the daily number of new hospital admissions in region i ;
- $\varphi(s)$ is the distribution of the generation time (see above);
- $R_i(t)$ is the assumed profile of the net reproduction number at time t in region i .

We used as input for $h_i(t)$ the curve of daily hospital admissions until November 5, 2020 (i.e., the day before the enactment of the tiered restrictions) and projected hospital admissions from November 6 to 25. To simulate the effect of maintaining restrictions of the pre-tier period versus the introduction of different tiers in each region, we considered different temporal profiles for $R_i(t)$. In all cases, the initial value of $R_i(t)$ on November 6 was taken as the mean value of R_t in the region, averaged between October 30 and November 5, 2020. Between November 19 and 25, we assume $R_i(t)$ to be constant and equal to a fraction $\chi = (1 - \psi)$ of the initial value, where ψ is the estimated mean relative reduction afforded by the tier with respect to the nationwide restrictions estimated by the linear model above (see Appendix). Between November 6 and 19, we assume a linear interpolation between the starting and final value. For nationwide restrictions, $\psi = 0$ by definition. This is equivalent to maintaining R_t constant and equal to the initial value throughout the projection period. We simulated 1,000 runs to accounting for stochastic variability of projections. To evaluate the effect of uncertainty around the estimation of $R_i(t)$, we carried out a sensitivity analysis by sampling, for each of the 1,000 stochastic simulations, the initial value of $R_i(t)$ at November 6 from the estimated posterior distribution of the mean value of R_t between October 30 and November 5 (Appendix).

References

1. Our World In Data. Daily new confirmed COVID-19 deaths per million people (Europe, European Union, Italy) <https://ourworldindata.org/coronavirus-data-explorer?zoomToSelection=true&time=2020-03-01..latest&country=Europe~EuropeanUnion~ITA®ion=World&deathsMetric=true&interval=smo>

othed&perCapita=true&smoothing=7&pickerMetric=new_cases_per_million&pickerSort=desc .

Accessed: February 8, 2020

2. Istituto Superiore di Sanità. Epidemia COVID-19 - Aggiornamento nazionale 9 dicembre 2020

https://www.epicentro.iss.it/coronavirus/bollettino/Bollettino-sorveglianza-integrata-COVID-19_9-dicembre-2020.pdf . Accessed on December 18, 2020

3. Istituto Superiore di Sanità. Impact of the COVID-19 epidemics on total mortality of the resident population. January-November 2020 [In Italian]. Available at

https://www.iss.it/documents/20126/0/Rapporto+ISS+COVID-19+n.+1_2021.pdf/3faa83b1-f2c0-d9f0-bf05-27ed692acdc5?t=1612175460678 Accessed: February 8, 2020

4. Official Gazette of the Italian Republic. Decree of Italian President of Council of Ministers of 13 October 2020. <https://www.gazzettaufficiale.it/eli/id/2020/10/13/20A05563/sg>. Accessed on December 18, 2020

5. Official Gazette of the Italian Republic. Decree of Italian President of Council of Ministers of 18 October 2020. <https://www.gazzettaufficiale.it/eli/id/2020/10/18/20A05727/sg>. Accessed on December 18, 2020

6. Official Gazette of the Italian Republic. Decree of Italian President of Council of Ministers of 24 October 2020. <https://www.gazzettaufficiale.it/eli/id/2020/10/25/20A05861/sg>. Accessed on December 18, 2020

7. Official Gazette of the Italian Republic. Decree of Italian President of Council of Ministers of 3 November 2020. <https://www.gazzettaufficiale.it/eli/id/2020/11/04/20A06109/sg>. Accessed on December 18, 2020

8. Google. Google COVID-19 Community Mobility Reports.

<https://www.google.com/covid19/mobility/> Accessed: February 8, 2020

9. Zhang J, Litvinova M, Wang W, Wang Y, et al. Evolving epidemiology and transmission dynamics of coronavirus disease 2019 outside Hubei province, China: a descriptive and modelling study. *The Lancet Infectious Diseases*, 2020.

10. O'Driscoll M, Harry C, Donnelly CA, Cori A, Dorigatti I et al., 2020, A comparative analysis of statistical methods to estimate the reproduction number in emerging epidemics with implications for the current COVID-19 pandemic, *Clinical Infectious Diseases*, ISSN: 1058-4838
11. Guzzetta G, Riccardo F, Marziano V, Poletti P, Trentini F, Bella A et al. Impact of a Nationwide Lockdown on SARS-CoV-2 Transmissibility, Italy. *Emerging Infectious Diseases*, 2020. 27(1).
12. Haug N, Geyrhofer L, Londei A, Dervic E, Desvars-Larrive A, Loreto V, et al. Ranking the effectiveness of worldwide COVID-19 government interventions. *Nature human behaviour*, 2020. 1-10.
13. Brauner JM, Mindermann S, Sharma M, Johnston D, Salvatier J, Gavenčiak T, et al. Inferring the effectiveness of government interventions against COVID-19. *Science*, 2020.
14. Decree of the President of the Region Campania n. 79 of 15 October 2020.
<http://www.regione.campania.it/assets/documents/ordinanza-n-79-15-10-2020-gqfwgp0oy0bkxpuv.pdf?fbclid=IwAR2i7QPe6IUXHLhLOVX0TKKaHxfpizf8qmizXuRCOt5MCZbl3GrRceNKY#:~:text=OGGETTO%3A%20Ulteriori%20misure%20per%20la,sanit%C3%A0%20pubblica%20e%20dell'art.> Accessed on December 18, 2020
15. Decree of the President of the Region Puglia n. 407 of 30 October 2020.
https://www.regione.puglia.it/documents/777762/782298/ordinanza+407_signed.pdf/ee41c575-0cdd-3105-9f57-6d696228581f?t=1603916712487. Accessed on December 18, 2020
16. Decree of the President of the Region Lombardia n. 623 of 21 October 2020.
<https://www.regione.lombardia.it/wps/wcm/connect/b52df501-feae-4103-b514-1038a5747d46/Ordinanza+623+del+21+ottobre.pdf?MOD=AJPERES&CACHEID=ROOTWORKSPACE-b52df501-feae-4103-b514-1038a5747d46-nlcl8GE#:~:text=E'%20vietata%20dalle%2018.00%20alle,e%20ville%20aperte%20al%20pubblico.>
Accessed on December 18, 2020
17. Decree of the President of the Region Calabria n. 80 of 25 October 2020.
https://www.regione.calabria.it/website/portalmidia/2020-10/Ordinanza-P_G_R_n_80-del-25-ottobre-2020.pdf. Accessed on December 18, 2020

18. Decree of the President of the Region Umbria n. 65 of 19 October 2020.
https://www.regione.umbria.it/documents/18/24917656/ORDINANZA_65.pdf/80514ae4-6ae5-43f0-a0d7-43e23dae6194. Accessed on December 18, 2020
19. Riccardo F, Ajelli, M, Andrianou X, Bella A, Del Manso M, Fabiani M et al. Epidemiological characteristics of COVID-19 cases and estimates of the reproductive numbers 1 month into the epidemic, Italy, 28 January to 31 March 2020. *Eurosurveillance*, 2020, 25.49: 2000790.
20. Cori A, Ferguson NM, Fraser C, Cauchemez S. A new framework and software to estimate time-varying reproduction numbers during epidemics. *American Journal of Epidemiology* 178(9):1505-12, 2013
21. Cereda D, Tirani M, Rovida F, Demicheli V, et al. The early phase of the COVID-19 outbreak in Lombardy, Italy. *arXiv* 200309320, 2020
22. Wallinga J and Lipsitch M. How generation intervals shape the relationship between growth rates and reproductive numbers. *Proceedings of the Royal Society B: Biological Sciences*, 2007, 274.1609: 599-604.

Restrictions	October 14 – November 5, 2020		November 6, 2020 – onwards	
	National restrictions	Yellow tier	Orange tier	Red tier
Face masks	Mandatory in outdoor spaces	Mandatory in outdoor spaces	Mandatory in outdoor spaces	Mandatory in outdoor spaces
Individual movements	No restrictions	Stay-home mandate between 10pm and 5am (except for work, health and other certified reasons)	Stay-home mandate between 10pm and 5am and ban on movements between municipalities and to/from other regions (except for work, health and other certified reasons)	Stay-home mandate and ban on movements between municipalities and to/from other regions (except for work, health and other certified reasons).
Retail and Services	Open	Shopping malls closed during weekends and holidays (with the exception of essential retail & services)	Shopping malls closed during weekends and holidays (with the exception of essential retail & services)	All shops closed (with the exception of essential retail & services)
Schools & Childcare	Open until October 18. Recommendation to adopt distance learning for high schools and universities since October 19. Mandatory distance learning for at least 75% of the time in high schools since October 26. Regional exceptions: - in Campania, kindergartens were closed and distance learning for all schools adopted since October 16; - in Apulia, distance learning for all schools adopted since October 30; - in Lombardy, 100% distance learning for high schools since October 26; - in Calabria, 100% distance learning for high schools and universities since October 26.	Distance learning in high schools and universities except when on-site attendance is essential (i.e., for laboratory activities)	Distance learning in high schools and universities except when on-site attendance is essential (i.e., for laboratory activities)	Distance learning in second and third grade of middle schools, in all grades of high schools and universities
Bars serving food, Cafès & Restaurants	No service after 12am until October 25. No service after 6pm and take away allowed until 12am since October 26.	No service after 6pm and take away allowed until 10pm.	Closed. Take away allowed until 10pm.	Closed. Take away allowed until 10pm.
Public transport	No capacity reduction In Umbria, 50% capacity reduction since October 21.	50% capacity reduction (except school service)	50% capacity reduction (except school service)	50% capacity reduction (except school service)
Indoor recreational and cultural venues	Open with capacity reduction until October 25. Closed since October 26.	Closed	Closed	Closed
Gyms, pools & leisure venues	Open until October 25. Non-professional contact sports not permitted. Closed except outdoor sport centers since October 26.	Closed except outdoor sport centers	Closed except outdoor sport centers	Individual outdoor training only (except sport events of national interest)

Table 1. Description of restrictions applied in Italy since October 14²⁻¹⁰.

Location	National	Yellow	Orange	Red
Grocery/Pharmacy	-0.9 (-2.7; 0.9)	-6.2 (-8.0; -4.3)	-12.2 (-14.1; -10.3)	-22.0 (-24.0; -20.1)
Parks	11.1 (7.3; 14.9)	5.0 (0.8; 9.1)	-20.1 (-24.3; -15.8)	-34.1 (-38.6; -29.6)
Retail/Recreation	-20.8 (-23.5; -18.2)	-29.8 (-32.5; -27.1)	-46.6 (-49.3; -43.8)	-55.1 (-57.9; -52.3)
Transit stations	-19.7 (-22.6; -16.7)	-34.4 (-37.4; -31.3)	-44.6 (-47.7; -41.5)	-50.9 (-54.1; -47.7)
Workplaces	-16.7 (-17.9; -15.4)	-23.4 (-24.7; -22.1)	-28.2 (-29.6; -26.9)	-32.6 (-34.0; -31.2)
Residential	6.9 (6.4; 7.3)	10.6 (10.1; 11.1)	14.7 (14.2; 15.2)	16.9 (16.4; 17.4)

Table 2 Change in the number of visitors in different locations relative to pre-pandemic values, as estimated by a linear mixed model (mean and 95%CI, values in percentage). For residential locations, the reported value refers to the changes in the time spent.

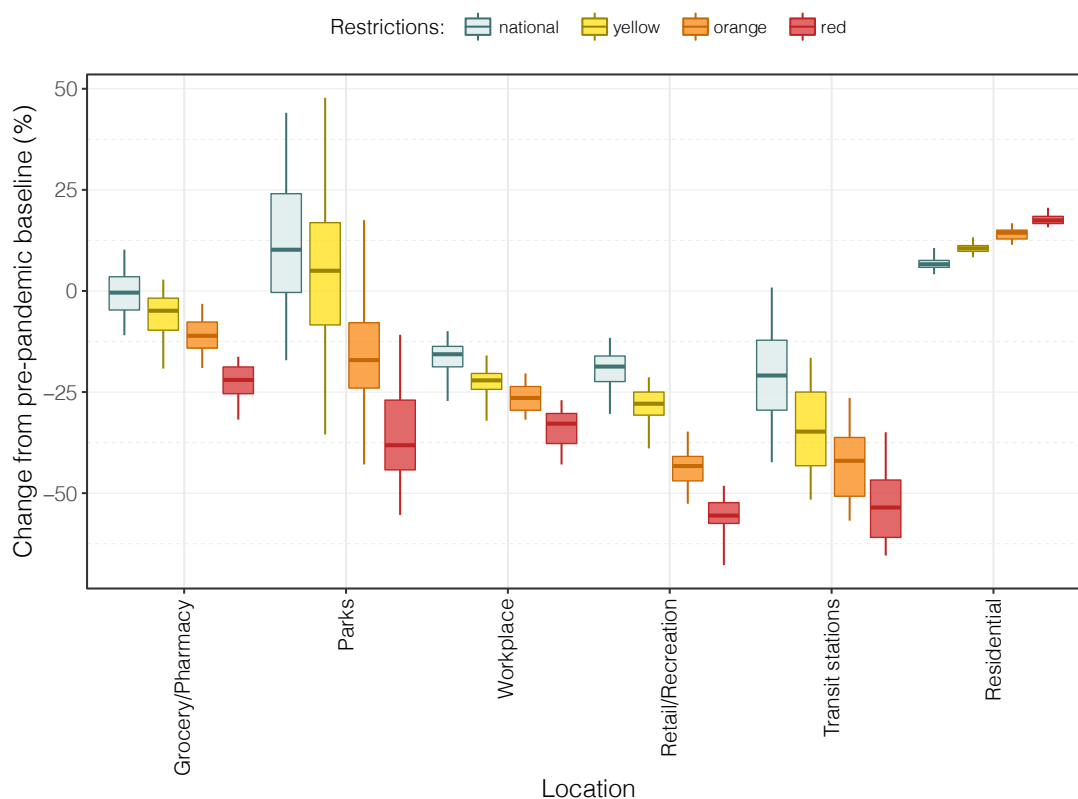


Figure 1 Distributions of changes in the time spent in different locations relative to pre-pandemic values, aggregated by tier (data at the province level⁸). Boxplots represent the median, interquartile range and 95% quantiles of the distributions.

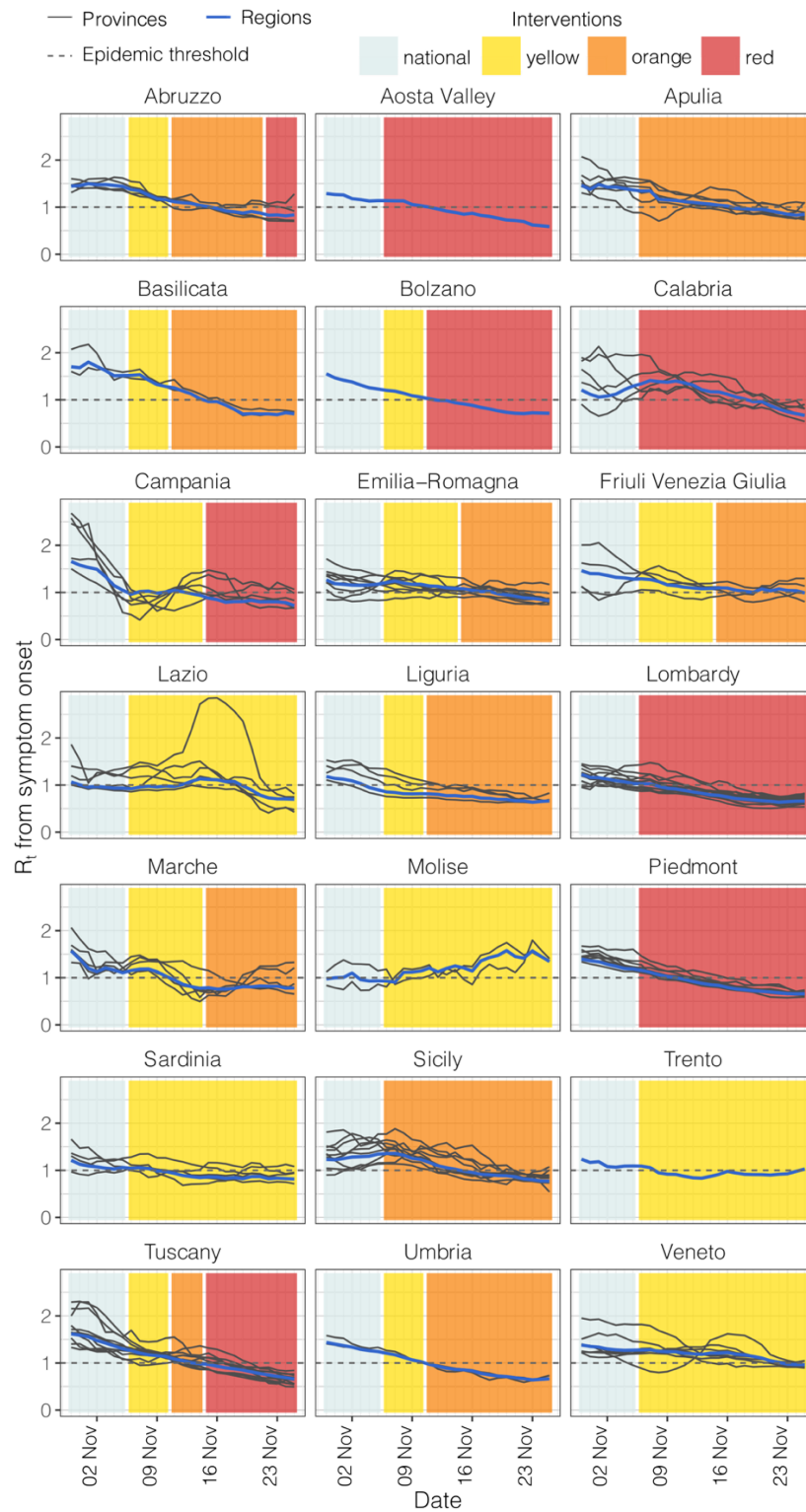


Figure 2 Temporal dynamics of the net reproduction numbers R_t and of the assigned tiers between October 30 and November 25. Each line shows the mean R_t for an Italian province (black) or region (blue). Provinces are grouped by region as tiers were assigned on a regional basis. Colored rectangles refer to the timeframe when the different tiers were adopted (see Table 1 for restrictions associated to the different tiers).

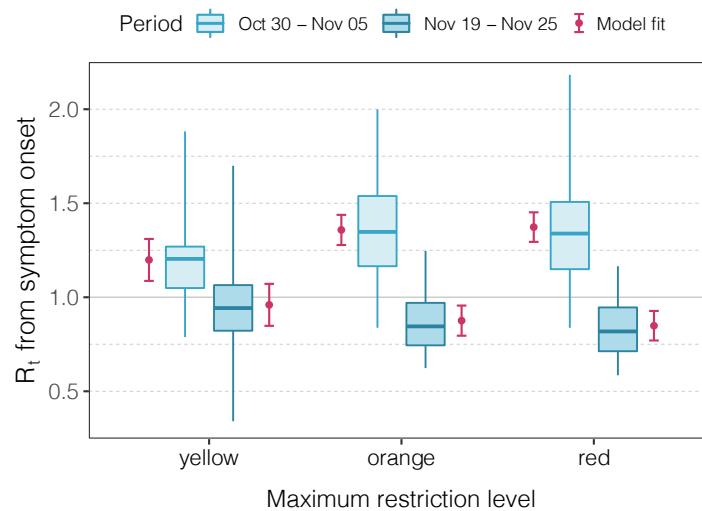


Figure 3 Distribution of the estimated reproduction numbers R_t across provinces aggregated according to tier and period of observation. Boxplots represent the median, interquartile range and 95% quantiles of the R_t distributions. Red dots represent the mean of the fit from the regression model and red vertical lines represent the 95% confidence interval around the mean.

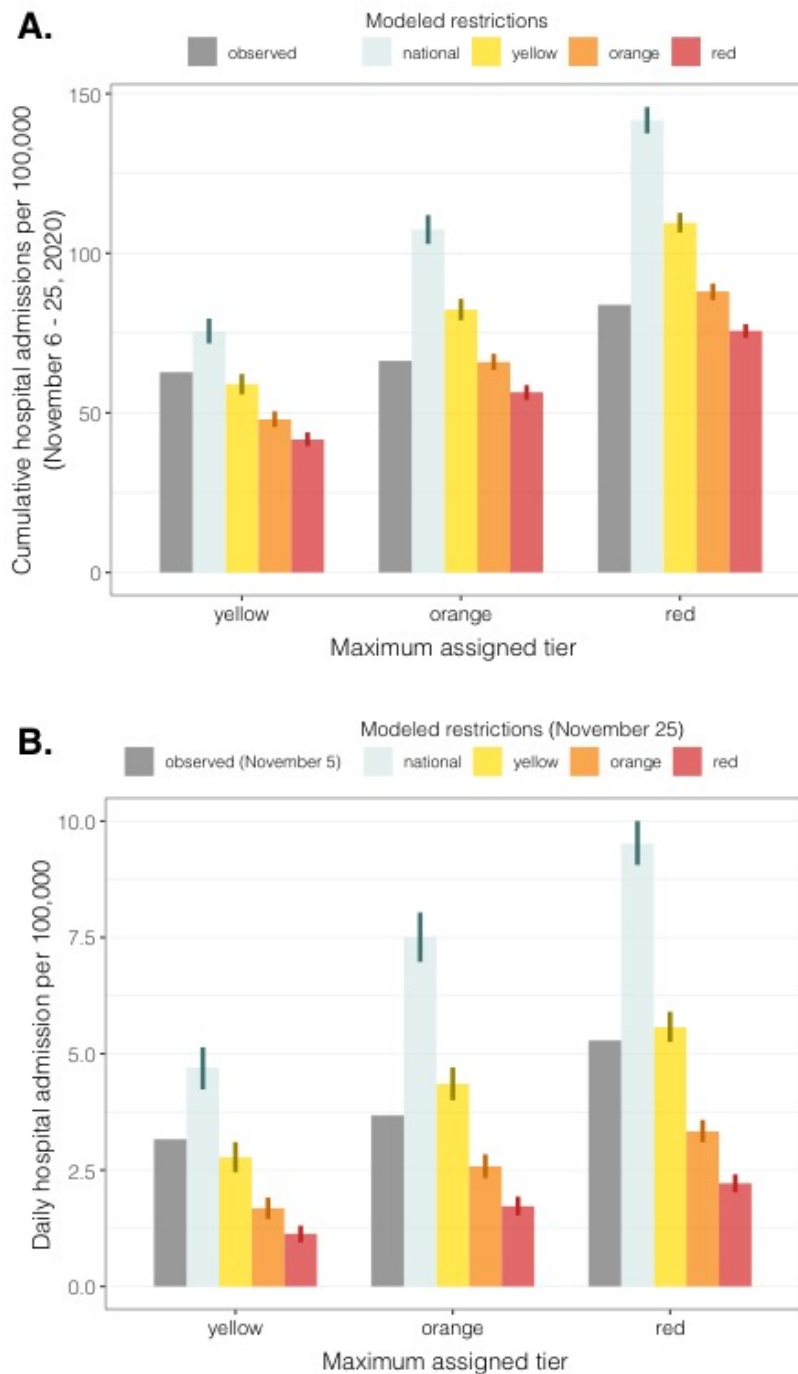


Figure 4. Incidence of hospital admissions by tier and modeled restrictions. A) Cumulative incidence over the projection period (November 6 – November 25, 2020). Gray bars represent the observed value for regions in different tiers. B) Incidence at the end of the projection period (November 25) in different scenarios. Grey bars represent the observed value at the beginning of the projection period (November 5) for regions in different tiers. Colored bars represent the mean projected value under the assumption that restrictions are maintained over the study period. Vertical lines represent the 95% confidence interval of the projected distribution.

Appendix

1. Impact of tiered restrictions on human activities

Table S1 reports the results of the linear mixed models on the Google mobility data for each of the location category. Parameter β_0 represents the category's mean mobility before the introduction of the tiers, while parameters $\beta_1, \beta_2, \beta_3$ represents the difference in the mean mobility for provinces in yellow, orange and red tiers respectively, compared to β_0 . Reported values represent percentage points compared to the pre-pandemic baseline.

Table S1 Results of linear mixed models on Google mobility data for each location.

Location	Parameter	Value	Std Error	DF	t-value	p-value
Grocery/ Pharmacy	β_0	-0.89925	0.917075	-0.98056	15.94459	0.341454
	β_1	-5.25475	0.48196	-10.9029	164.3782	3.59E-21
	β_2	-11.2807	0.517082	-21.8162	164.9524	1.75E-50
	β_3	-21.1227	0.562332	-37.5628	165.8015	5.29E-83
Parks	β_0	11.09021	1.953271	5.677763	15.82006	3.58E-05
	β_1	-6.12371	1.433472	-4.27194	166.9954	3.25E-05
	β_2	-31.1464	1.536525	-20.2707	167.9877	5.38E-47
	β_3	-45.2031	1.668026	-27.0997	169.4064	1.74E-63
Residential	β_0	6.85952	0.237311	28.90514	21.68241	8.33E-19
	β_1	3.709299	0.134483	27.58182	164.7453	1.23E-63
	β_2	7.841163	0.14426	54.35424	165.4399	1.97E-107
	β_3	10.07891	0.156845	64.26042	166.4686	1.98E-119
Retail/ Recreation	β_0	-20.8301	1.335306	-15.5995	14.69864	1.50E-10
	β_1	-8.9815	0.534012	-16.8189	165.9061	1.10E-37
	β_2	-25.7174	0.573161	-44.8693	166.2494	8.09E-95
	β_3	-34.2708	0.623707	-54.9469	166.7844	9.32E-109
Transit stations	β_0	-19.6636	1.511468	-13.0096	16.93269	3.05E-10
	β_1	-14.725	0.6692	-22.0039	160.1254	2.83E-50
	β_2	-24.9473	0.718081	-34.7416	160.5276	1.41E-76
	β_3	-31.2401	0.787786	-39.6556	161.8096	2.98E-85
Workplaces	β_0	-16.6515	0.655163	-25.4159	19.38602	2.37E-16
	β_1	-6.74687	0.302839	-22.2787	163.3531	2.20E-51
	β_2	-11.5679	0.324983	-35.5954	163.7966	5.38E-79
	β_3	-15.9586	0.353539	-45.1396	164.4871	1.40E-94

2. Impact on transmissibility

Figure S1 reports the temporal change observed in the estimated net reproduction number R_t across different provinces of Italy, after the introduction of regional tiered restrictions. Table S2 shows the aggregate estimate of R_t , before and after the introduction of tiered restrictions. Table S3 displays the results obtained with the linear mixed model applied to values of R_t at provincial level, according to our main analysis. Residuals obtained from this analysis are reported in Figure S2.

Table S2 Net reproduction number R_t before and after the tiered restrictions (main analysis).

Maximum tier	Mean R_t (Sd)	Mean R_t (Sd)	Relative reduction
	October 30 – November 5	November 19 - 25	
Yellow	1.21 (0.23)	0.99 (0.23)	18.4%
Orange	1.35 (0.24)	0.89 (0.14)	34.0%
Red	1.40 (0.29)	0.77 (0.14)	44.9%

Table S3. Results of the linear mixed model on the net reproduction number R_t at provincial level (main analysis). The estimated standard deviation for the random effect between regions, a_r , was 0.09, while the one for the random effect between provinces of the same region, $b_{p,r}$ was $7 \cdot 10^{-10}$. The estimated standard deviation for random noise, $\varepsilon_{p,T}$, was 0.20.

PARAMETER	INTERPRETATION	VALUE	STD ERROR	DF	T-VALUE	P-VALUE
β_0	Mean R_t before the introduction of tiers for provinces in maximum tier yellow	1.215	0.061	37.8	18.830	<0.00001
β_1	Difference in the mean R_t before the introduction of tiers for provinces in maximum tier orange, compared to yellow	0.138	0.076	35.3	1.821	0.07708
β_2	Difference in the mean R_t before the introduction of tiers for provinces in maximum tier red, compared to yellow	0.198	0.076	33.6	2.608	0.01348
β_3	Reduction in R_t for provinces in maximum tier yellow	-0.224	0.063	193.2	-3.559	0.00047
β_4	Additional reduction in R_t for provinces in maximum tier orange, on top of reduction afforded by yellow	-0.235	0.077	193.2	-3.063	0.00251
β_5	Additional reduction in R_t for provinces in maximum tier red, on top of reduction afforded by yellow	-0.403	0.076	193.2	-5.341	<0.00001

Figure S1 Variation of the net reproduction number R_t in each province. The arrows indicate the variation in R_t from the week before the introduction of regional tiered restrictions (October 30–November 5) to the end of our observations (November 19 – 25). Provinces are ordered by decreasing reduction in R_t .

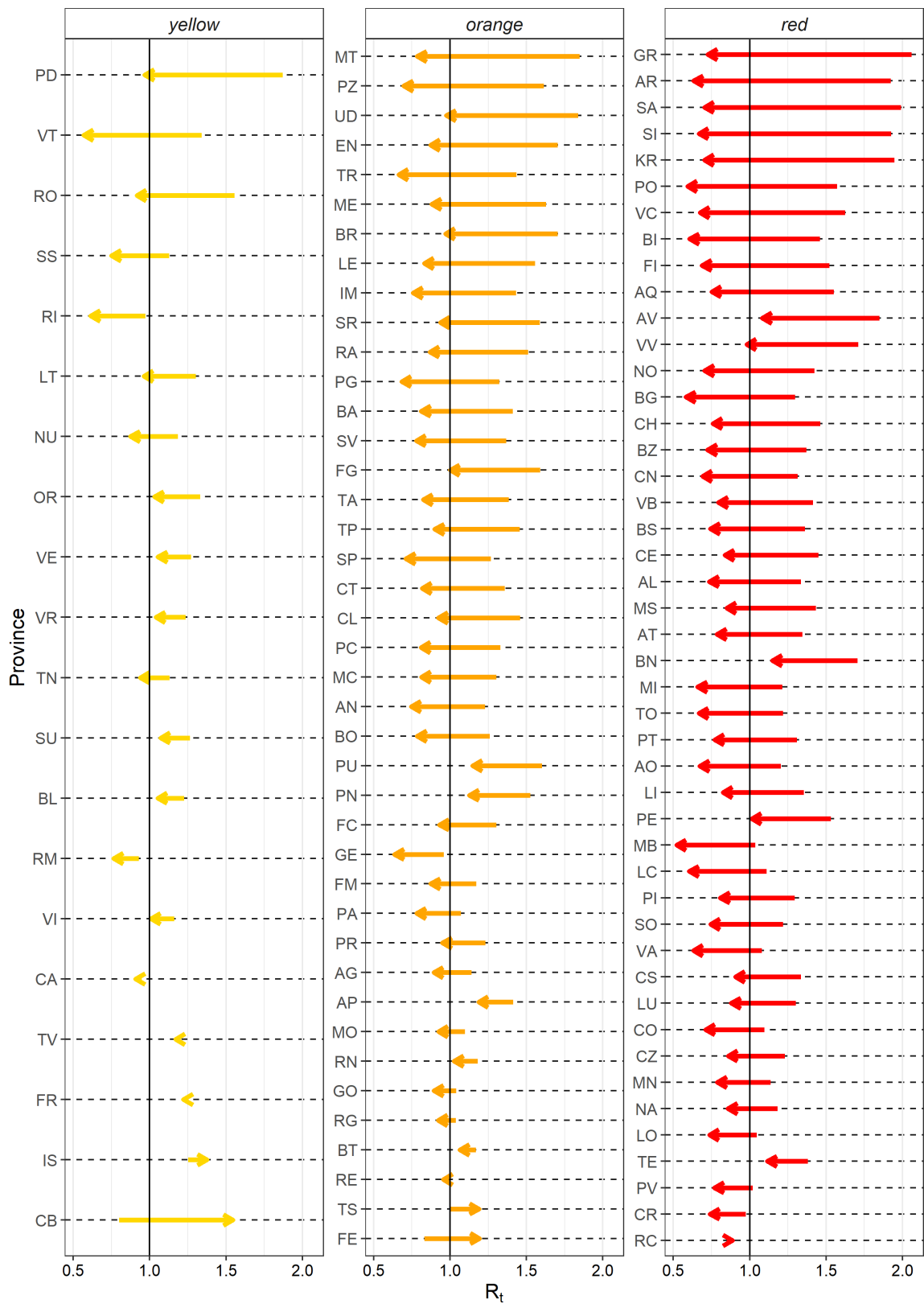
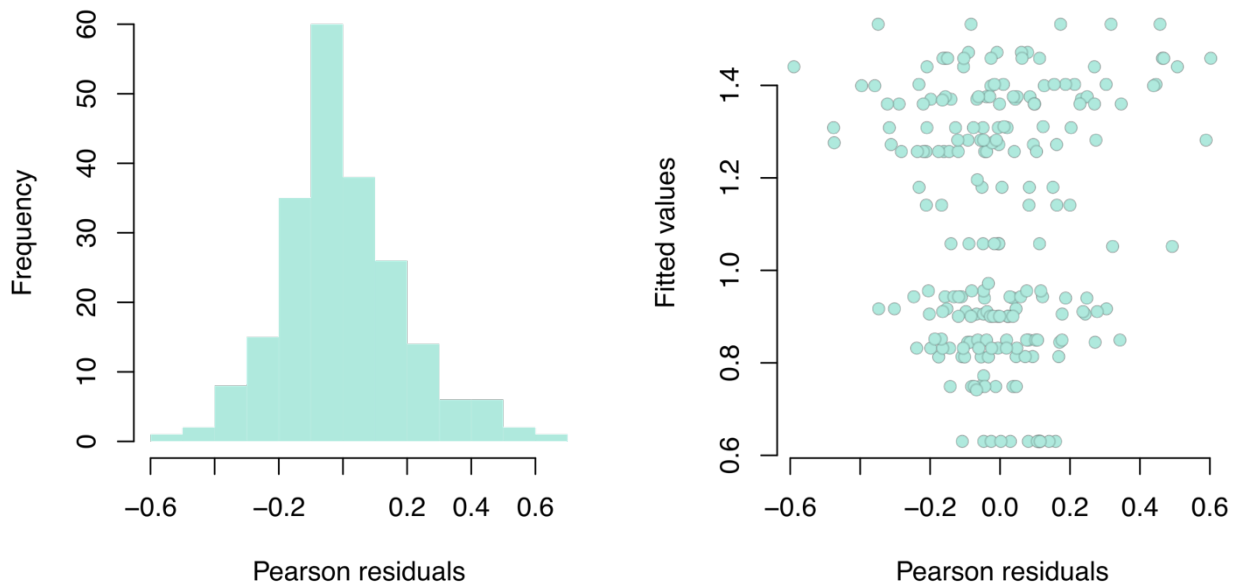


Figure S2. Analysis of residuals for the linear model (main analysis). Left: distribution of Pearson residuals (i.e., raw residuals normalized with respect to the variance of residuals); right: scatterplot between Pearson residuals and fitted values of $Y_{p,T}$.



2.1 Sensitivity analyses on transmissibility

We evaluated the robustness of our results by re-estimating the impact of tiered restrictions on transmissibility with alternative modelling assumptions. In particular, we considered the following four sensitivity analyses:

1) **Hospital admission.** We used the same model described in the main text, but considering as dependent variable $Y_{p,T}$ the reproduction number from hospital admissions, Rt^h , stratified by province and period of observation. Figure S3 shows the temporal change observed in the estimated Rt^h across different provinces of Italy, before and after the introduction of regional tiered restrictions. Results obtained with this sensitivity analysis are reported in Table S4 and S5, and Figure S4. In particular, Table S5 shows that the starting values of Rt^h (Oct 30 – Nov 5) were more homogeneous across tiers than those of Rt computed from symptomatic cases. However, estimated reductions associated with different tiers are comparable to those obtained in the main analysis.

2) **Regional analysis.** We applied the baseline regression model to region-specific data as follows:

$$Y_{r,T} = \beta_0 + \beta_1 X_r^{orange} + \beta_2 X_r^{red} + \beta_3 Z_T + \beta_4 X_r^{orange} Z_T + \beta_5 X_r^{red} Z_T + a_r + \varepsilon_{r,T}$$

where $Y_{r,T}$ represents the regional values of Rt , and where the independent variables are region-specific rather than province-specific. Obtained results are displayed in Tables S6 and S7. Due to the lower number of observations, model results for Rt show a lower statistical power compared with the baseline analysis. However, the estimated reductions associated with different tiers are comparable to those obtained in the main analysis.

3) **Lengths of periods T.** We applied the baseline regression model to Rt values computed at provincial level but considering average values over alternative period lengths ranging from 3 to 11 days. For example, when considering a period length of 3 days, we compared the mean Rt in period November 3 – 5 against

November 23-25. Figure S5 shows the difference between model parameters estimated for each period length compared to the main analysis (7 days). Estimated variations in parameter estimates are limited (within 0.05 in most cases).

4) **Alternative grouping of provinces.** We applied the baseline regression model to R_t values computed at provincial level but considering a finer grouping of provinces with 5 categories rather than 3, to account for the temporal evolution of tier assignments to the region of belonging of the province. Specifically, we categorized tiers in five groups (see Figure 2 in the main text for a reference of category assignments):

- L1: tier constantly yellow (20 provinces): Lazio (5 provinces), Molise (2 provinces), Sardinia (5 provinces), Trento (1 Autonomous Province), Veneto (7 provinces);
- L2: tier reaching up to orange (26 provinces): Basilicata (2 provinces), Emilia-Romagna (9 provinces), Friuli Venezia Giulia (4 provinces), Liguria (4 provinces), Marche (5 provinces), Umbria (2 provinces);
- L3: tier constantly orange (15 provinces): Apulia (6 provinces), Sicily (9 provinces)
- L4: tier reaching up to red (20 provinces): Abruzzo (4 provinces), Bolzano (1 Autonomous Province), Campania (5 provinces), Tuscany (10 provinces);
- L5: tier constantly red (26 provinces): Aosta Valley (1 province), Calabria (5 provinces), Lombardy (12 provinces), Piedmont (8 provinces).

The obtained results were substantially equivalent to those presented in the main text (see Table S8 and S9).

Table S4. Result of the linear mixed model on the net reproduction number estimated from hospital admissions, R_t^h , at the provincial level. See Table S2 for interpretation of parameters.

PARAMETER	VALUE	STD ERROR	DF	T- VALUE	P-VALUE
β_0	1.393	0.062	39.8	22.478	<0.00001
β_1	0.067	0.077	37.0	0.873	0.3883
β_2	0.045	0.077	34.9	0.593	0.5568
β_3	-0.280	0.067	193.1	-4.191	<0.00001
β_4	-0.162	0.082	193.1	-1.991	0.0479
β_5	-0.192	0.080	193.1	-2.399	0.0174

Table S5. Mean net reproduction number estimated from hospital admission, R_t^h , before and after regional interventions.

Maximum tier	Mean R_t^h (SD) October 30 – November 5	Mean R_t^h (SD) November 19 - 25	Relative reduction
Yellow	1.38 (0.21)	1.10 (0.14)	20.3%
Orange	1.48 (0.26)	1.03 (0.19)	30.4%
Red	1.44 (0.27)	0.97 (0.20)	32.6%

Figure S3. Temporal dynamics of the net reproduction numbers from hospital admissions, R_t^h , and of restrictions applied between October 30 and November 25. Each line shows the mean R_t^h for an Italian province (grey) or region (blue). Provinces are grouped by region as interventions were carried out at the regional level. Colored rectangles refer to the timeframe when the different tiers were in place (see Table 1 in main text for a description of restrictions).

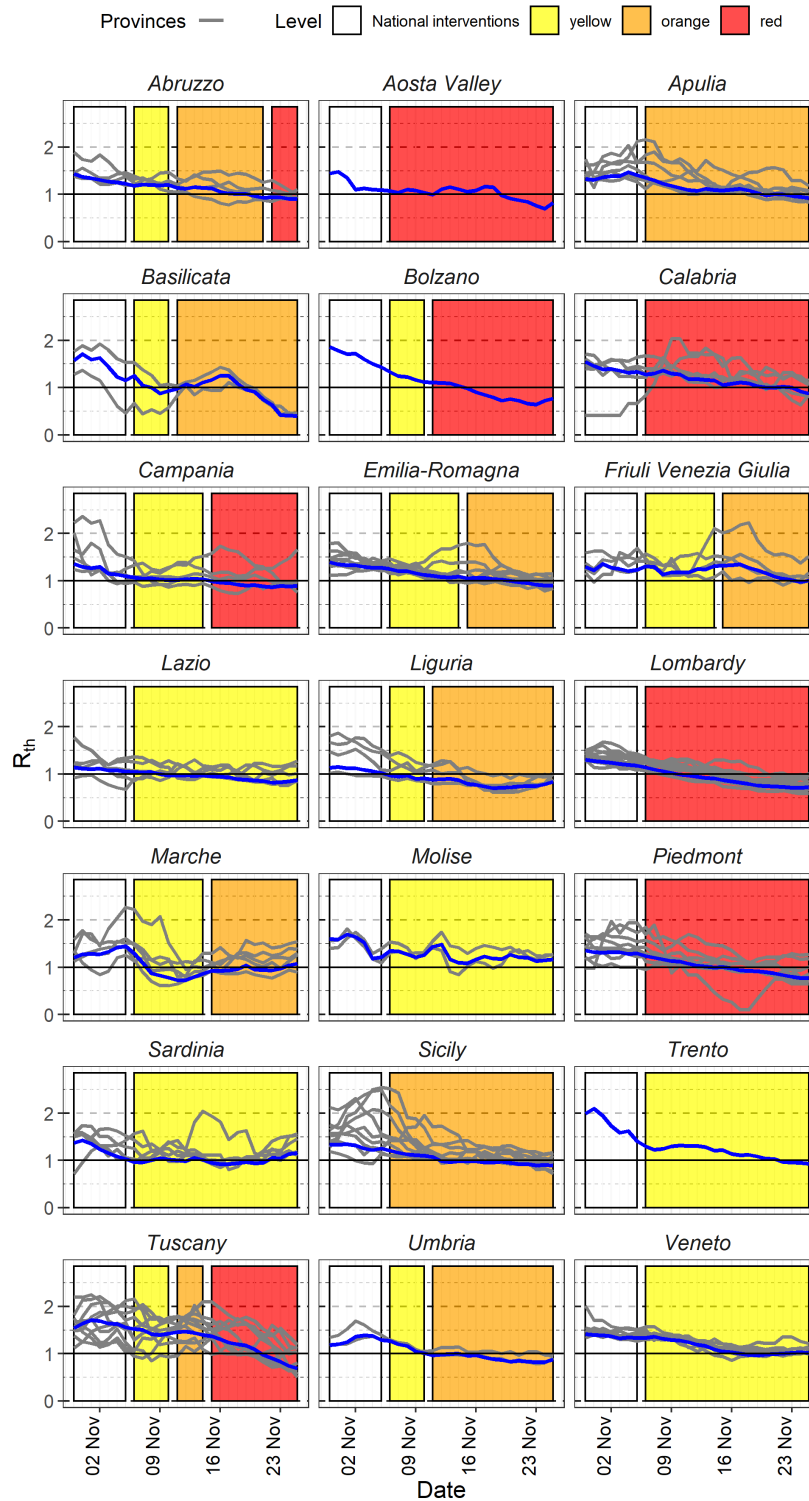


Figure S4 Variation in the net reproduction number from hospital admissions (R_t^h) in each province. The arrows indicate the variation in R_t^h from the period before the introduction of the regional tiered restrictions (October 30–November 5) to the end of our observations (November 19 – 25). Provinces are ordered by decreasing reduction in R_t^h .



Table S6. Result of the linear mixed model on the net reproduction number estimated from symptom onset, R_t , at the regional level. See Table S2 for interpretation of parameters.

PARAMETERS	VALUE	STD ERROR	DF	T-VALUE	P-VALUE
β_0	1.099	0.069	35.9	15.810	<0.00001
β_1	0.217	0.089	35.9	2.453	0.01914
β_2	0.211	0.089	35.9	2.382	0.02265
β_3	-0.087	0.096	18	-0.909	0.37562
β_4	-0.415	0.123	18	-3.389	0.00327
β_5	-0.478	0.123	18	-3.901	0.00105

Table S7. Mean net reproduction number estimated from symptom onset, R_t , at regional level before and after regional interventions.

Maximum tier	Mean R_t (SD) October 30 – November 5	Mean R_t (SD) November 19 - 25	Relative reduction
Yellow	1.10 (0.13)	1.01 (0.26)	8.0%
Orange	1.32 (0.19)	0.81 (0.13)	38.2%
Red	1.31 (0.17)	0.74 (0.09)	43.2%

Figure S5 Variation in estimated model parameters when considering different lengths (in days) of the window over which R_t is averaged. On the x axis the difference between the estimated parameter value of the parameter and the main analysis (which uses a 7-day window). Parameter names are on the y axis. See Table S2 for interpretation of parameters. Colors represent different period lengths. Asterisks represent statistical significance of the estimated model parameters (p -value <0.05).

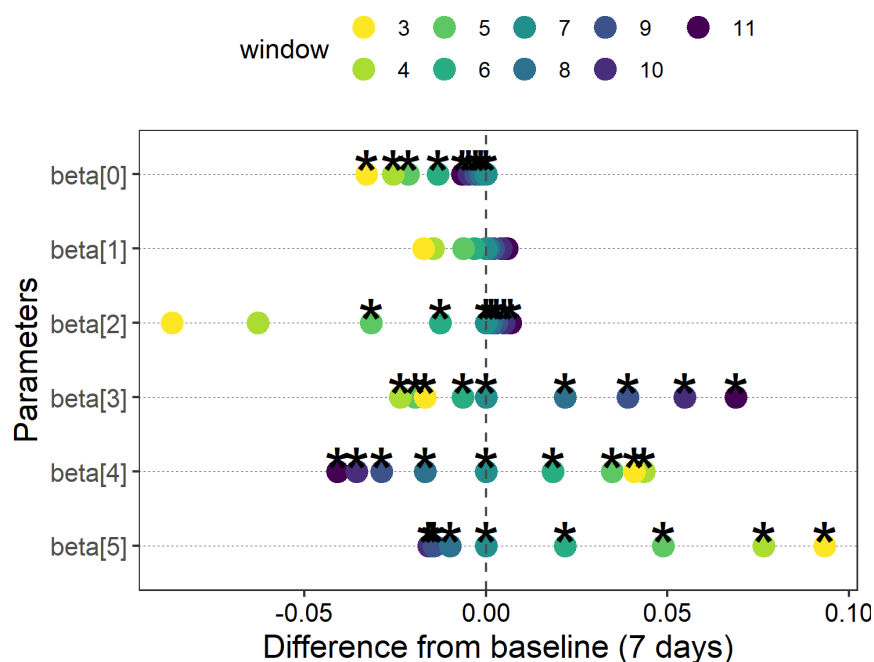


Table S8 Result of the linear mixed model on the net reproduction number estimated from symptom onset R_t at provincial level considering 5 groups of interventions

PARAMETER	INTERPRETATION	VALUE	STD ERROR	DF	T-VALUE	P-VALUE
β_0	Mean R_t before interventions for provinces in regions L1	1.215	0.055	35.1	22.001	<0.00001
β_1	Difference in the mean R_t before interventions for provinces in regions L2, compared to L1	0.103	0.074	34.8	1.404	0.16908
β_2	Difference in the mean R_t before interventions for provinces in regions L3, compared to L1	0.207	0.089	23.7	2.319	0.02933
β_3	Difference in the mean R_t before interventions for provinces in regions L4, compared to L1	0.345	0.080	30.6	4.304	0.00016
β_4	Difference in the mean R_t before interventions for provinces in regions L5, compared to L1	0.071	0.077	26.5	0.921	0.36516
β_5	Reduction in R_t after interventions for provinces in regions L1	-0.224	0.062	190.5	-3.598	0.00041
β_6	Additional reduction in R_t after interventions for provinces in regions L2, on top of reduction afforded by L1	-0.199	0.083	190.5	-2.401	0.01733
β_7	Additional reduction in R_t after interventions for provinces in regions L3, on top of reduction afforded by L1	-0.299	0.095	190.5	-3.133	0.00200
β_8	Additional reduction in R_t after interventions for provinces in regions L4, on top of reduction afforded by L1	-0.512	0.088	190.5	-5.820	<0.00001
β_9	Additional reduction in R_t after interventions for provinces in regions L5, on top of reduction afforded by L1	-0.318	0.083	190.5	-3.842	0.00017

Table S9. Mean net reproduction number estimated from symptom onset, R_t , before and after regional interventions.

Tier	Mean R_t (SD) October 30 – November 5	Mean R_t (SD) November 19 - 25	Relative reduction
L1	1.22 (0.23)	0.99 (0.23)	18.8%
L2	1.31 (0.25)	0.89 (0.17)	32.1%
L3	1.42 (0.22)	0.90 (0.08)	36.6%
L4	1.56 (0.26)	0.82 (0.16)	47.4%
L5	1.27 (0.24)	0.73 (0.10)	42.5%

3. Impact on tiered restriction on hospital admissions

To estimate the impact of tiered-restrictions on the COVID-19 burden, we estimated the number of daily hospital admission expected under a scenario of constant transmissibility and compared these results with what expected by assuming a reduction in the transmission to R_t values in the different tiers. In the main analysis, simulations were obtained by applying the renewal equation to hospitalized cases, initialized at values observed over the window October 30 – November 5, 2020 using average estimates of R_t (Figure 4). As a sensitivity analysis with respect to this assumption, we projected the number of hospitalized cases by considering the variability in the estimate of the net reproduction number in each region. Specifically, we employed 1,000 different runs of the renewal equation (see Methods in the main text) where for each simulation we sampled an R_t value from a normal distribution of mean and variance equal to those characterizing the posterior distribution of R_t estimated from the time series of symptom onset for the period October 30 – November 5, 2020 (Figure S6). In this case, when assuming that the national restrictions existing on November 5 had been maintained until November 25, we estimated a cumulative incidence of hospital admissions of 75.7 (95%CI: 71.0 – 80.6), 107.6 (95%CI: 102.1 – 113.7) and 142.1 (95%CI: 137.0 – 147.3) per 100,000 in the yellow, orange and red tier respectively, resulting in a total of 70,193 (95%CI: 68,149-72, 990) hospital admissions (Figure S7). Maintaining national restrictions would have been resulted in a general increase of the daily hospital admission incidence between November 6 and November 25; for example, in the red tier regions/APs the incidence would have been risen from 5.3 per 100,000 per day on November 5 to 9.6 (95%CI: 9.0-10.2) per 100,000 per day on November 25 (Figure S8, Table S10). These values are in line with those observed in the main analysis and with limited variability around the mean estimates.

Figure S6. Schematic representation of the assumed profile of the net reproduction number under different intervention scenarios. Solid lines represent the mean R_t (included in the main analysis) while the shaded areas represent the variability around the mean R_t value (included in the sensitivity analysis).

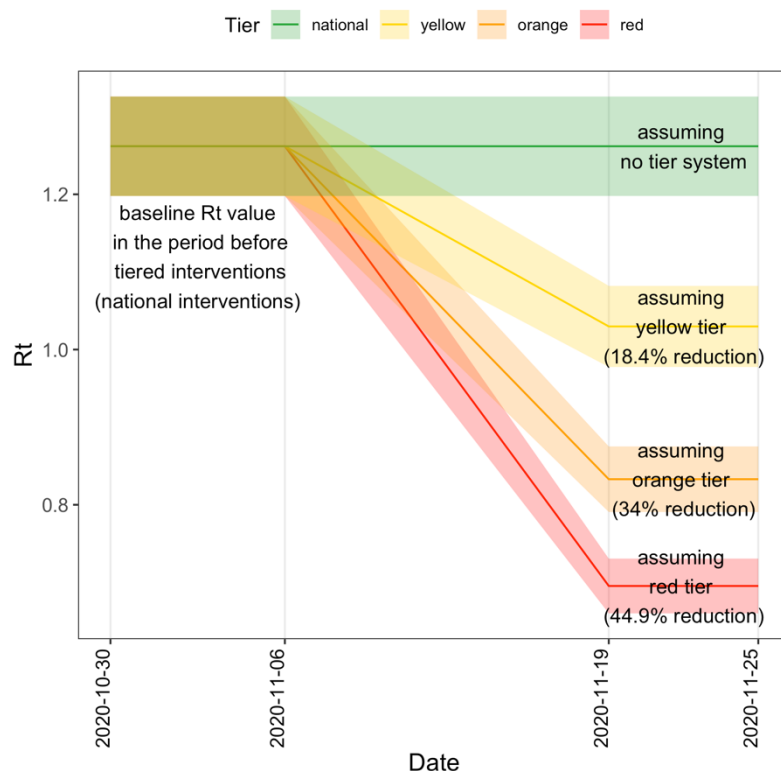


Figure S7 Incidence over the projection period (November 5 - November 25) in different scenarios. Gray bars represent the observed value for regions in different tiers. Colored bars represent the mean projected value under the assumption that restrictions are maintained over the study period. Vertical lines represent the 95% confidence interval of the projected distribution.

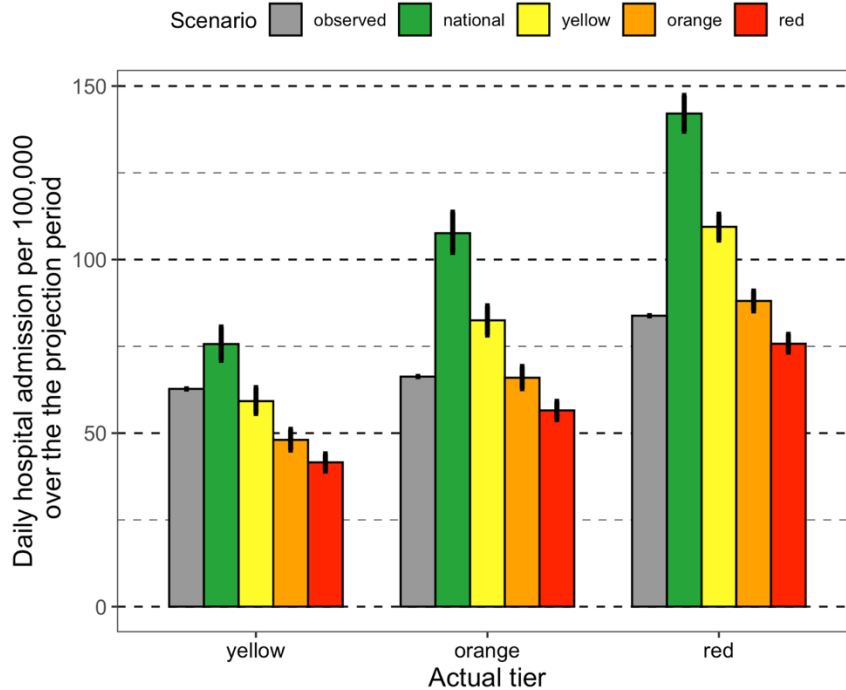


Figure S8. Incidence at the end of the projection period (November 25) in different scenarios. Gray bars represent the observed value at the beginning of the projection period (November 5) for regions in different tiers. Colored bars represent the mean projected value under the assumption that restrictions are maintained over the study period. Vertical lines represent the 95% confidence interval of the projected distribution.

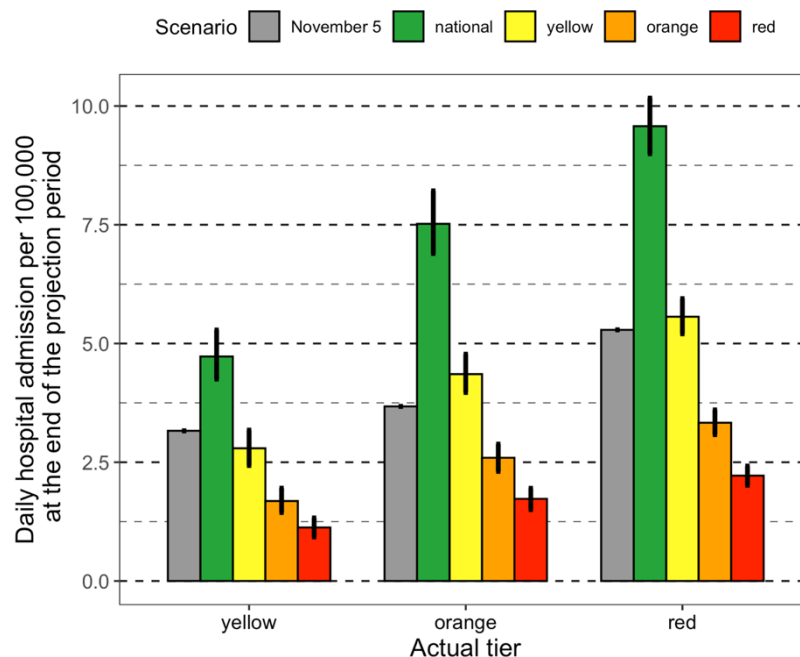


Table S10 Scenario simulations for cumulative hospital admissions over the period November 6-25, 2020

Actual tier	Observed hospital admissions	Population	Modeled tier	Mean projected hospital admissions (95%CI)	Mean projected hospital admissions (95%CI) [sensitivity]
yellow	8,313	13,248,726	national	10,016 (9,450-10,552)	10,025 (9,403-10,675)
			yellow	7,831 (7,422-8,235)	7,846 (7,375-8,362)
			orange	6,362 (6,021-6,698)	6,366 (5,978-6,771)
			red	5,507 (5,229-5,798)	5,508 (5,176-5,830)
orange	12,696	19,153,927	national	20,579 (19,758-21,425)	20,609 (19,553-21,770)
			yellow	15,776 (15,124-164,35)	15,798 (14,992-16,602)
			orange	12,626 (12,112-13,113)	12,633 (12,036-13,255)
			red	10,816 (10,418-11,201)	10,830 (10,326-11,335)
red	23,341	27,843,345	national	39,468 (38,365-40,627)	39,559 (38,142-41,010)
			yellow	30,461 (29,640-31,277)	30,470 (29,410-31,487)
			orange	24,519 (23,786-25,244)	24,524 (23,730-25,316)
			red	21,086 (20,546-21,692)	21,095 (20,415-21,851)