

42 1. Introduction

43 In Brazil, around 13.6 million people, which represents 6% of the population, live in slums
44 (“favelas”) or similar agglomeration households, according to the latest official 2019 census by
45 the Brazilian Institute of Geography and Statistics (IBGE). More than 13 thousand slums were
46 identified throughout Brazil in 734 of the 5,570 Brazilian municipalities. According to the World
47 Health Organization (WHO), 1 billion people live in such conditions around the globe. It is
48 estimated that nearly 89% of people living in slums are concentrated in capital cities and
49 metropolitan regions. In these places, community health is impacted by factors arising from
50 narrow shared physical and social spaces despite a lack of continued social health care. In Brazil,
51 and predominantly in the City of Rio de Janeiro, slums were historically established and lately
52 enlarged on the slopes of hills, following the complex geomorphology of the city landscapes.

53 Since the beginning of the Covid-19 outburst, several studies pointed that different
54 contamination risks exist when considering air quality of indoor and outdoor places(1–3). For the
55 SARS-CoV-2 virus, different proposed mechanisms of transmissibility have been discussed to
56 explain the relationship between the aerial contamination virus on air and the Covid-19
57 incidence(2,4,5). In this context, the transmission of the pathogens by aerosols or droplets has
58 been shown to be highly predominant in confined spaces(6). The WHO and the US Centers for
59 Disease Control and Prevention (7) have officially recognized inhaling virus-laden aerosols as the
60 primary mode of transmission of COVID-19. Depending on the stage of the epidemiological curve
61 and when hospitalizations reached controlled levels, some countries adopted temporary outdoor
62 maskless conditions for their citizens despite the risks involved.

63 Due to its architecture of piled habitations, the outdoor environment of slums in Rio de
64 Janeiro has poor ventilation, high humidity and is mainly shaded by walls which gives them
65 characteristics closer to indoor-type conditions. In addition to that, we find open sky sewage
66 ditches in between narrow alleys. The sewage discharged on the inclined plane of the slums
67 produces water flow turbulence resulting in water splashes. In this condition, sewage droplets
68 microparticles are launched and dispersed in the slum’s atmosphere, reaching the inside of
69 homes (where people do not use masks) and encompassing the walkways passersby use daily,
70 where kids play and do their social life. Several countries of Europe, the USA, Australia, and
71 Brazil(8–12) have reported detecting the SARS-CoV-2 virus in sewage samples. Diarrhea has
72 been described as a symptom of Covid-19 disease, and human excreta may contain important
73 viral loads derived by infected people(13).

74 The stability of infectious SARS-CoV-2 to a variety of porous, non-porous surfaces and
75 suspended in suspension in the air near the ground have been put into perspective, highlighting
76 this information on the need for hygiene. According to Chin et al. (2020)(14), the SARS-CoV-2 is
77 susceptible to many standard disinfection methods. However, sanitization efficiency against living
78 microorganisms in the environment depends on several factors, some intrinsic properties of the
79 microorganism, others depending on the external physical characteristics of the environment.
80 Only surfaces in direct contact with the disinfection product are predicted quantities will be
81 successfully sanitized. It is believed that the same disinfectants can kill different SARS-CoV-2

82 variants because no genetic changes to the virus were observed concerning their basic outer
83 layer (envelope) of proteins and lipids(15).

84 Experiments performed under controlled laboratory conditions regarding the environmental
85 survival of SARS-CoV-2 on surfaces do not necessarily reflect real-world situations since the
86 initial virus load, and factors related to its removal or degradation are frequently
87 underestimated(16). The present work aims to present a case study of sanitization effectiveness,
88 developed in a slum area of Rio de Janeiro City/Santa Marta slum, between April 2020 and June
89 2021, that considered the 3 main parameters: the presence/absence of SARS-CoV-2 particles in
90 the outdoor ambient, the statistics of Covid-19 cases in studies location and the different levels
91 of sanitization activities.

92

93 **2. Methods**

94 **2.1 Covid-19 epidemiological database**

95 The Covid-19 epidemiological database is centralized by the “Painel Rio COVID-19”
96 governmental program. Data is obtained in daily resolution for the State of Rio de Janeiro, Brazil,
97 and available at the site “[https://experience.arcgis.com/experience/
98 38efc69787a346959c931568bd9e2cc4/](https://experience.arcgis.com/experience/38efc69787a346959c931568bd9e2cc4/)”. A second epidemiological program, named “Covid por
99 CEP/Rio de Janeiro,” uses the ZIP-Code of each infected individual and georeferenced its
100 location over a map of the municipality. From this approach, we may select the epidemiological
101 data exclusively from the Santa Marta slum site (Fig. 1). Santa Marta slum comprises a population
102 of approximately 7,356 hab with a density of 134,000 hab km⁻² in the Southern sector of the
103 City of Rio de Janeiro, Brazil. Our study comprises the period from April 14th, 2020, to June 1st,
104 2021. A survey developed by the NOIS program (Núcleo de Operações e Inteligência em Saúde)
105 estimated that Covid-19 notification in Rio de Janeiro is only 7.2%.

106

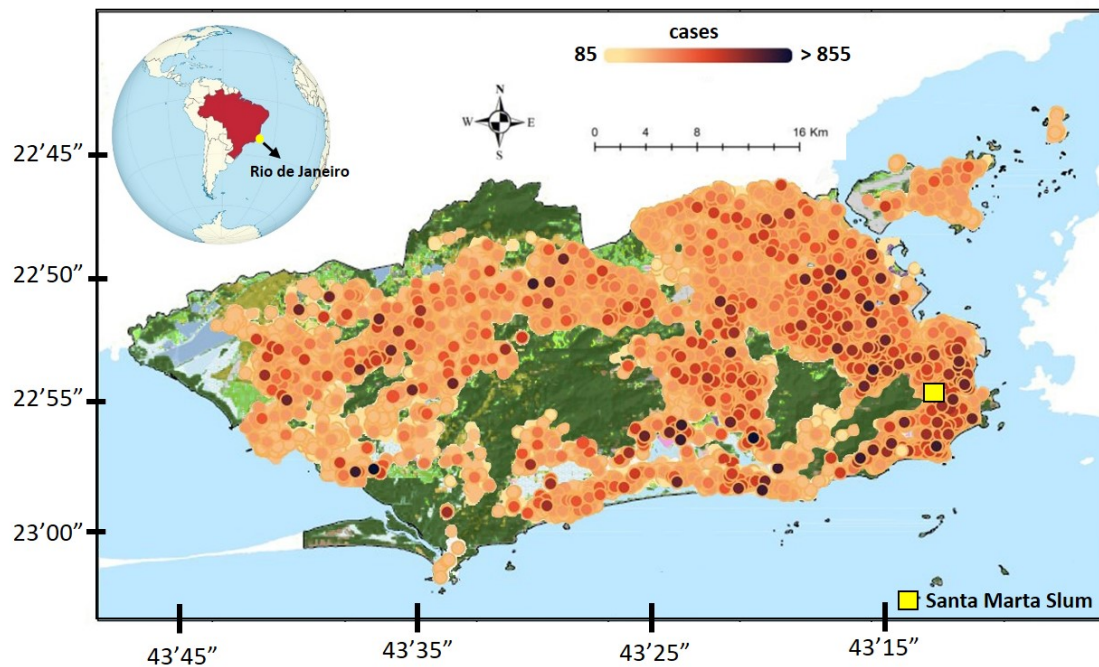


Figure 1. Map distribution of Covid-19 incidence in the City of Rio de Janeiro-Brazil. Data is updated daily and available online by the City Hall/SIVEP-Gripe at <https://covidporcep.rio.br/>. Green areas denote natural vegetation. The small yellow square indicates the location of the Santa Marta slum.

2.2 Sanitization activities

At Santa Marta slum, a team of local volunteers conducted the sanitization activities, dressing appropriate clothes and masks and using cationic surfactants based on quaternary ammonium compounds (5th generation), (QACs), and sodium hypochlorite. Disinfectant spraying occurred manually at floors and surfaces of walls and corridors. The quaternary ammonium belongs to a family of strong antimicrobial compounds and has powerful disinfectant activity, acting by destroying the microorganism's proteins. It acts directly on the plasma membrane or bacterial cell wall, inhibiting its synthesis. In this work, we have categorized the sanitization levels according to the number of monthly activities. 8 sanitization activities corresponded to 100% (2 per week), 4 to 50%, 3 to 37.5% and 1 to 12.5%. Total sanitization was divided into six campaigns: April (day 14)-August 2020; September-November 2020; December 2020; January-March 2021; April 2021, and May 2021.

2.2. Aerosol sampling

For the air samplings, we have used a set of field instrumentation appropriate to virus collection that employed solid, liquid, and gelatinous substrates taking into account previous protocols conducted at the City of Wuhan in China and other sites by the end of 2019 (4,17). Samplings were conducted between July and September 2020, integrating approximately 24 hours between sanitization activities. Besides the Santa Marta slum, a second slum named Rocinha (population of 100,000 hab and density: 70,000 hab km⁻²) was also monitored for comparison purposes. A summary of the methods is presented below.

134

135 **2.2.1. One Stage Bioaerosol Impactor.**

136 The Model N6 (also known as “Andersen head”) is instrumentation that allowed continuous
137 collection of viable bioaerosols and microorganisms in general in the air under a controlled air flux
138 of 12.5 L min⁻¹ (18). Bioaerosols were collected in sizes ranging from 0.6 to 22 µm and deposited
139 into a standard Petri dish containing agar.

140

141 **2.2.2. “BioSampler” (or bioflask).**

142 This sampler consists of a flask subdivided into three compartments: collector spout, a
143 specially designed microorganism trap located in its central part, and an air outlet (19). The
144 collector nozzle is a moving part that functions as an “inlet” through which atmospheric air passes.
145 This compartment is fitted over a central part containing tangential nozzles designed to form a
146 vortex inside the sampler. A liquid solution (glycerol) was filled this inner compartment where
147 bioaerosols could be trapped.

148

149 **2.2.3. MAS100 sampler.**

150 This sampler uses the same principle as the Andersen sampler. It is a compact and integrated
151 suction system in which air is forced through a flat cover with 400 equally spaced holes, which
152 acts as an “inlet” (20). The diameter of each hole is 0.7 mm. Just below the holes, a Petri dish
153 containing a solid culture medium (agar) was arranged so that the bioaerosols from the suction
154 of the air directly impact the Petri dish surface containing agar.

155

156 **2.2.4. Cascade Impactor.**

157 A selective instrumentation for airborne particles that collects particles according to their
158 aerodynamic diameter under a constant airflow of 1.5 L min⁻¹. In this work, we used a PIXE
159 impactor that allowed discriminate bioaerosols according to their aerodynamic size as follows:
160 16µm to 8µm; 8µm to 4µm; 4µm to 2µm; 2µm to 1µm; 1µm to 0,5µm; 0,5µm to 0,25µm; 0,25µm
161 to 0,12µm; 0,12µm to 0,06µm and < 0,06µm. Bioaerosols were deposited on PTFE filters in 24
162 hours of integration.

163

164 **2.3. Molecular analysis.**

165 The samples collected on PTFE filters, agar, and glycerol were transported in cryotubes and
166 refrigerated to laboratory conditions. 2 mL of saline solution was added to each cryotube and left
167 for 30 min for absorption. After that period, the samples were mixed by vortexing for 1 min to
168 prepare the extraction. The material was extracted with the commercial Bio gene DNA/RNA viral
169 (Bioclin®) to extract viral nucleic acid by the silica membrane method. Extracts were eluted in 70
170 µL of each sample as recommended by the kit. 5µl of the previously extracted RNA was removed
171 and added to 10µl of the reaction mixture containing the target/primer E (viral envelope) and Rp
172 (human control) of the SARS-Cov-2 molecular kit (Bio-Manguinhos), according to the
173 manufacturer's recommendations. Reverse transcription and amplification reactions and
174 detection of the Coronavirus viral RNA were performed in an Applied Biosystems™ 7500 Real-

175 Time PCR System or QuantStudio™ 5 Real-Time PCR System thermocycler (Applied
176 Biosystems, USA) and programmed for 50°C/15min; 95°C/2min, 95°C/20s, 58°C/30s (45 cycles).
177 According to the Berlin protocol, configure the qRT-PCR parameters with the SARS-Cov-2
178 molecular kit for SARS-Cov2 (E) - Bio-Manguinhos. RT-PCR was performed with primers and
179 probes directed to the E molecular kit (Bio-Manguinhos), the Threshold cycle (Ct) was adjusted
180 to a fixed limit of 0.2 (E gene) and 0.15 (human control RP) and baseline Start/End range 3–15.
181 The result was considered valid only when the reference gene E's cycle threshold (Ct) value was
182 ≤ 40.


183

184 3. Results

185 For the two campaigns at Santa Marta and Rocinha slum's, SARS-CoV-2 was detected in
186 the aerosol fraction between 0.25 and 0.5 µm (low virus load – Ct: 40) in the cascade impactor
187 (Fig. 2), where aerosols were discriminated concerning their aerodynamic sizes ranging from 16
188 µm to smaller than 0.06 µm. The virus detection occurred in a site under sewage spray influence
189 in a corner that forked several alleys. During the monitoring period, Covid-19 epidemiological data
190 had the lowest levels in the entire city of Rio de Janeiro as well as in the Santa Marta slum.

191

Aerosol sampling method	Rocinha		Santa Marta	
	E	RP	E	RP
Andersen head	Undetermined	Undetermined	NI	NI
Bioflask	Undetermined	Undetermined	Undetermined	Undetermined
MAS-100/Merck	Undetermined	Undetermined	Undetermined	RP
Aerosol size: 16-8µm	Undetermined	Undetermined	Undetermined	Undetermined
Aerosol size: 8-4µm	Undetermined	Undetermined	Undetermined	Undetermined
Aerosol size: 4-2µm	Undetermined	Undetermined	Undetermined	Undetermined
Aerosol size: 2-1µm	Undetermined	RP	Undetermined	Undetermined
Aerosol size: 1-0.5µm	Undetermined	Undetermined	Undetermined	Undetermined
Aerosol size: 0.5-0.25µm	Undetermined	RP	E	Undetermined
Aerosol size: 0.25-0.12µm	Undetermined	Undetermined	Undetermined	Undetermined
Aerosol size: 0.12-0.06µm	Undetermined	Undetermined	Undetermined	Undetermined
Aerosol size: < 0.06µm	Undetermined	Undetermined	Undetermined	Undetermined

192 

192

193 **Figure 2.** The molecular results for the different types of aerosol sampling techniques used in
194 this work: Andersen head, biosampler, MAS, and a cascade impactor using PTFE 25 mm filters.
195 Colors blue, red, and yellow indicate detection. RP: Gene RdRP, E: Gene E, and NI: Not
196 Inferred.

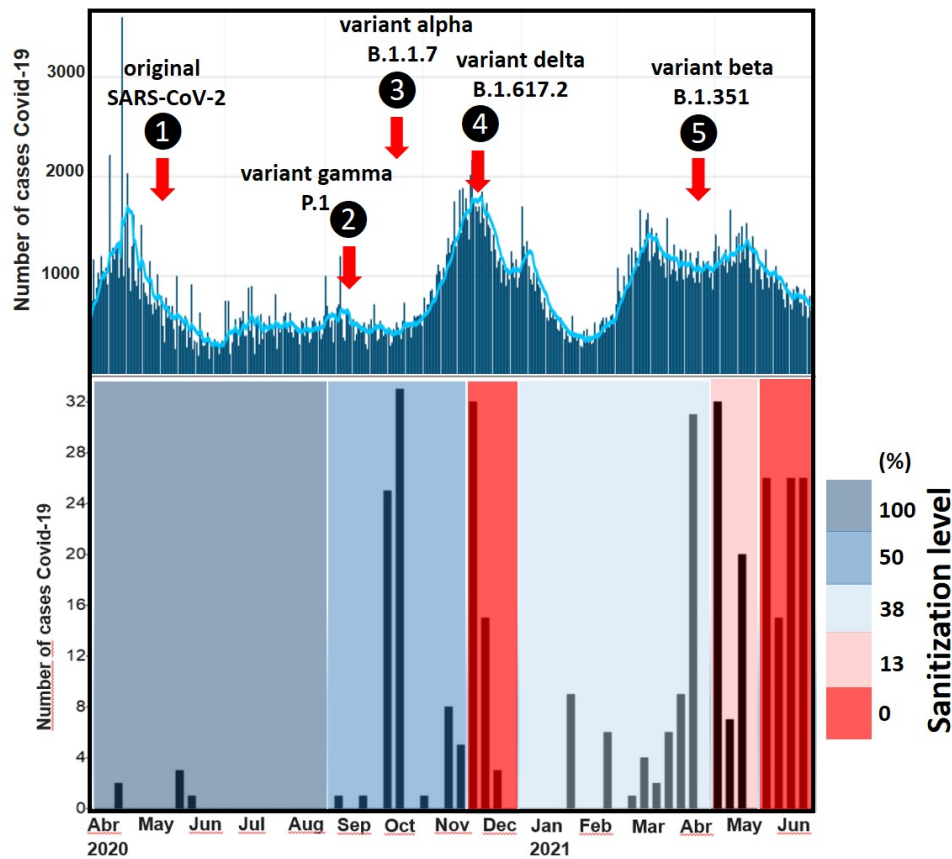
197

198 Considering that the spherical diameter of SARS-CoV-2 ranges from 0.09 to 0.12 µm and
199 its detectability has occurred within the aerosol accumulation mode, we may infer that ambient
200 microparticles infected with the virus have passed through condensation and coagulation

201 processes in the atmosphere before being collected. In droplet transmissions, coughs, sneezes,
202 and speeches can spread course viral particles on saliva and mucus in diameters of
203 approximately 5.0 μm that is much higher than the cutoff size of 0.5 μm particles detected in the
204 Santa Marta slum. Viruses emitted during coughs, sneezes, and speeches are not “particles
205 alone.” They are expelled from the upper respiratory tract in salivary and mucous droplets
206 containing water, salt, protein, and other components of respiratory secretions (21). Their overall
207 sizes may reach an order of magnitude higher than the virus diameter (22). Therefore, the
208 “aerosol component” in the slum atmosphere, in the fine mode, can better explain the viral load
209 detected, which could represent a viral aggregate particle or a small water droplet containing viral
210 particles. In tropical climate conditions, it is expected that these droplets may rapidly dehydrate
211 before they fall down or be attached to other particles in the air. Droplets smaller than 5-10 μm ,
212 emitted by human and sewage discharge, tend to dehydrate as fast enough to form droplet nuclei
213 that range within the agglutination airborne size category. These nuclei are easily transported
214 through air currents. In this fraction, virus particles may reach the interior of homes (where people
215 do not wear masks) in the breathable fraction and therefore be able to be deposited as deeper as
216 the bronchiolar lung compartment, according to several lung deposition models (23).

217 Although it is difficult to precisely whether the viral particles come directed from infected
218 humans or by the spray of sewage, it is the first demonstration that it can survive in the
219 environmental conditions of the slum. From this point, we investigated how effective sanitization
220 could act in the fight against the spread out of the virus. We based this second study on comparing
221 the Covid-19 incidence in the Santa Marta slum and the sanitization level developed in that
222 location.

223 As illustrated in Figure 3, between April 2020 and June 2021, sanitization in the Santa
224 Marta slum passed through different levels of communitarian support. Once the employed
225 materials depended on public donations and volunteering, the sanitization activity varied from
226 weekly performance (100%) to a complete lack of activity (0%). It covered four SARS-CoV-2
227 variants in transit in the country. During the first wave of cases and field activities, the original
228 SARS-Cov-2 was already circulating in Rio de Janeiro in April 2020. In September 2020, the
229 Gamma variant (variant P.1) was detected in Manaus/Amazon, and in October, the alpha variant
230 (B.1.1.7) was detected in Brazil. The delta variant (B.1.617.2) came just after, probably arriving
231 in Rio de Janeiro by November or December 2020, approximately one to two months after being
232 detected in India in October 2020. The Beta variant (B.1.351) was identified in December 2020 in
233 South Africa and detected in Brazil in April 2021. Recently, the Omicron variant (variant B.1.1.529)
234 was first reported to WHO(24) on November 2021. Figure 3 presents the Omicron pre-condition
235 period in Brazil.



236

237

238

239

240

241

242

Figure 3. Main SARS-CoV-2 variants under circulation in Rio de Janeiro during the sanitization activities. In the upper box, a 7-day running average of cases in the City of Rio de Janeiro is provided by the Panel COVID-19 (official bulletin from the municipality of Rio de Janeiro (<https://riocontraocorona.rio/>)). Bellow, the time series of accumulated cases in the area of the Santa Marta slum. Shaded boxes correspond to sanitization level. Shaded boxes correspond to sanitization level.

243

244

245

246

247

248

249

250

251

252

253

254

255

256

257

258

259

260

During the first Covid-19 wave in Rio de Janeiro City, from April to August 2020, sanitization activities took place 2 times a week with great social engagement (100% of activity). Within this period, two SARS-CoV-2 variants were detected in Rio de Janeiro. However, despite this fact, the Covid-19 incidence was greatly lower than observed in other sites of the city and other neighboring municipalities. Between September and November, activities halved (50% of activity), and during December, a combination of fatigue, relaxation of social distances, social meetings before and during Christmas, and reduced, or lack, of investments in the project lead to a breakdown in the activities (0% of activity). More than two variants were circulating in the city during December, with a probable prevalence of variant B.1.1.7 (25), which peaked in Brazil in mid-December. The preliminary statistical analysis estimated that this variant is 50% to 74% more transmissible than the original SARS-CoV-2. From January to March 2021, 37.5% (three sanitization activities in a month), relative to the initial level of sanitization, the incidence of Covid-19 was relatively lower during January and February, following the city's epidemiological curve (upper part of Fig. 3).

Nevertheless, rapid increases were observed when the incidences were higher. In this period, increases in the Santa Marta slum were lagged one month in advance regarding the city database. In April, the same level of sanitization that was carried out since the beginning of

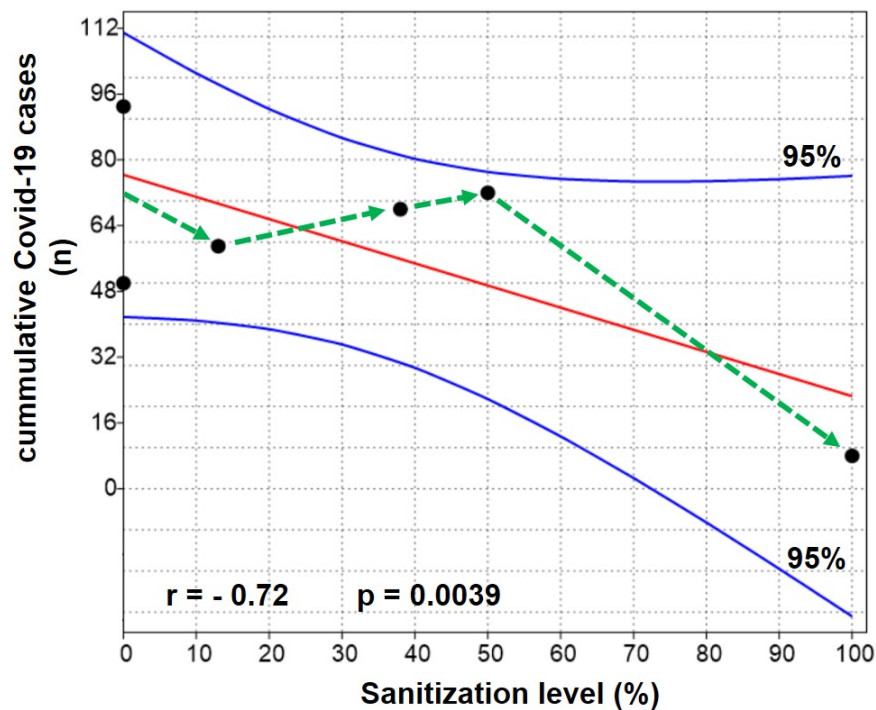
261 January was maintained and likewise the 50% level, and it was not enough to achieve a low level
262 of maintaining the incidence in a low-level pattern. In May and June 2021, sanitization reached
263 its lowest levels of 12.5 and 0%, respectively, and coincidentally, the highest Covid-19 incidence
264 was observed along with the time series (Fig. 3).

265 There are two points raised from our data of Figure 3: (1) the worst scenario,
266 corresponding to the elevation of cases, that was observed when we experienced 0% sanitization
267 in the same period of, concomitant to the maximum stages of the epidemiological curve that
268 occurred in December 2020 and June 2021; (2) we observed a peak in cases of Covid-19 every
269 time a new variant was documented in the city, regardless of the level of sanitization. We did not
270 find a reason for this response which points to the need for an indeed study concerning other
271 environmental or social factors involved.

272

273 **4. Discussions**

274 Despite the several factors that modulate the incidence of Covid-19, varying from simple
275 use of a mask to complex social behavior, data of Santa Marta slum was significantly correlated
276 with sanitization activities ($r = -0.72$) (Fig. 4), considering the hygiene work as a whole. In general,
277 the poor areas of the slums in Rio de Janeiro City concentrate some of the highest incidences of
278 Covid-19. A partial socio-epidemiological bulletin for Covid-19 specific for slums (01/2020), edited
279 by the Oswaldo Cruz Foundation/FIOCRUZ (an institution from the Brazilian Ministry of Health),
280 showed that Covid-19 lethality during the first wave in non-slum neighborhoods was estimated to
281 be 9,23% until June 2020, while the neighborhoods areas with high slum concentrations this value
282 climbed to 16,43 to 19,47%. Santa Marta slum was a singular case along with the first wave of
283 cases during the half-year of 2021 when the sanitization effort was maintained at 100% level (2
284 activities per week). However, in a close look at Figure 4, one may observe that results from the
285 successive sanitization levels of 0, 12.5, 37.5, and 50% did not differ statistically from each other,
286 as seen from the dotted arrows in Figure 4. From this, we may conclude that if sanitization makes
287 any difference on Covid-19 incidence, it should be applied at least two times a week,
288 corresponding to our 100% level. This periodicity conforms to the official recommendations of The
289 Brazilian Ministry of Health for sanitization, using the cationic surfactants ammonium quaternary
290 compound. They suggest a sanitization action two times a week for non-hospitalization sites but
291 of great public circulation as supermarkets, townhouse complexes, and other similar places.
292 Therefore, we believe that the success obtained for the 100% level using QACs is probably
293 related to the extensive use of the product within the expiry time of the disinfectant compound.
294 Locals report from their own experience that an ongoing sanitization activity (when sanitization is
295 maintained at the 100% level), individuals living in the slum tend to be more stimulated to fight
296 against Covid-19 since they have the perception that some activity has been conducted for the
297 sake of collective well-being.



298

299

300

301

Figure 4. Linear regression (central curve) between the cumulative number of cases of Covid-19 in Santa Marta Slum and the sanitization activities. External curves represent the confidence level of the regression.

302

303

304

305

306

307

308

309

310

311

One aspect that may favor a good relationship between sanitization level and reduction of cases when considered in a longer time scale (here in 1 year) is that sanitization may bring a better environmental quality condition. Due to a lack of government health care, the slums are home to a series of diseases where can be routinely found a combination of malnutrition, diarrhea, and pneumonia. Diarrhea and pneumonia are conditions often linked to the attack of viruses, bacteria, and fungi. Therefore, an ongoing sanitization may also fight endemic pathogens and thus may provide greater resistance to the immune system of the inhabitants. Our field observation shows that sanitization also contributes to creating a sense of self-preservation and motivation within the communitarians to fight against virus dispersion and contamination.

312

313

314

315

316

317

318

319

320

321

322

323

324

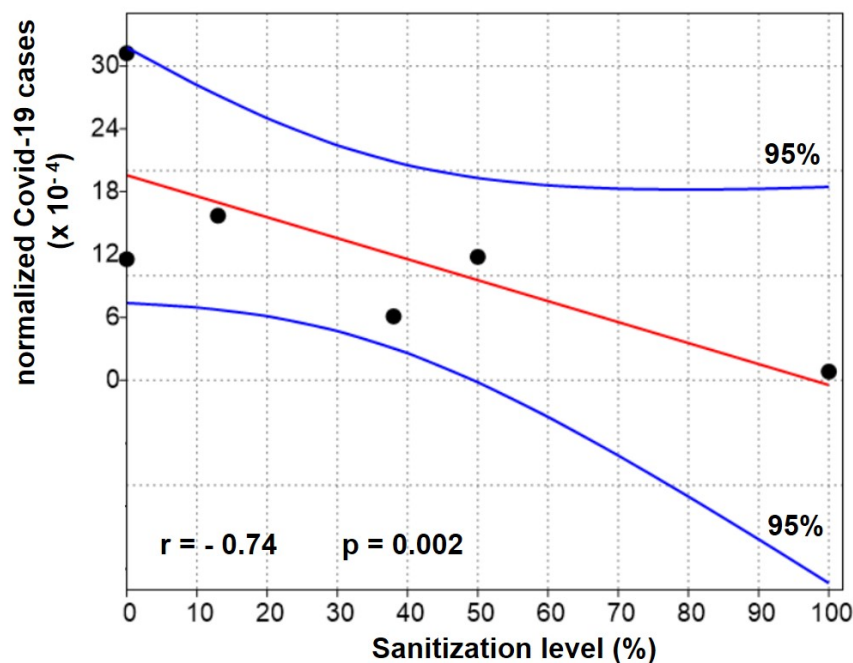
Another point to be considered in the study is that sanitization activities were conducted during different integration periods, under different SARS-CoV-2 variant circulation and different epidemiological moments. As commented before, these activities happened this way because voluntary activities depend on donations, and there is fatigue of work among the volunteers. In order to consider these aspects and to minimize the impact of the variables cited above, we have also regressed the sanitization levels with the normalized Covid-19 cases, which is defined as the ratio of the integrated number of cases in Santa Marta slum (n) with the total integrated number of cases in the city of Rio de Janeiro (N) in the same period for a given sanitization activity. Data used in this analysis are presented in Table 1. The complete database of Covid-19 for Rio de Janeiro city between April 2020 to June 2021 is shown in Supplementary Material S1. The result obtained (Fig. 5) confirmed the statistically significant response of the Covid-19 incidence with respect the sanitization ($r = -0.74$), indicating that for the totality of the hygiene activities, a declining trend in cases did occur.

325

326 **Table 1.** Data of sanitization activities and Covid-19 statistics for Santa Marta slum and the City
327 of Rio de Janeiro.

Period	Covid-19 cases			
	Sanitization Level (%)	in Santa Marta (n)*	Covid-19 cases in Rio de Janeiro (N)**	Ratio*** (n/N)x10000
April-August 2020	100	8	95321	0.839
Sept-Nov 2020	50.0	72	61105	11.78
December 2020	0	50	43240	11.56
Jan-April 2021	37.5	68	111314	6.108
May 2021	12.5	59	37551	15.71
June 2021	0	93	29798	31.21

328 *: data from the Program: "Covid por CEP"; **: normalized data; ***: data available by the Program: Health
329 Secretary of the State of Rio de Janeiro/"Centro de Informações Estratégicas e Respostas de Vigilância
330 em saude (CIEVS-RJ)" at http://sistemas.saude.rj.gov.br/tabnetbd/webtabx.exe?covid19/esus_sivep.def
331



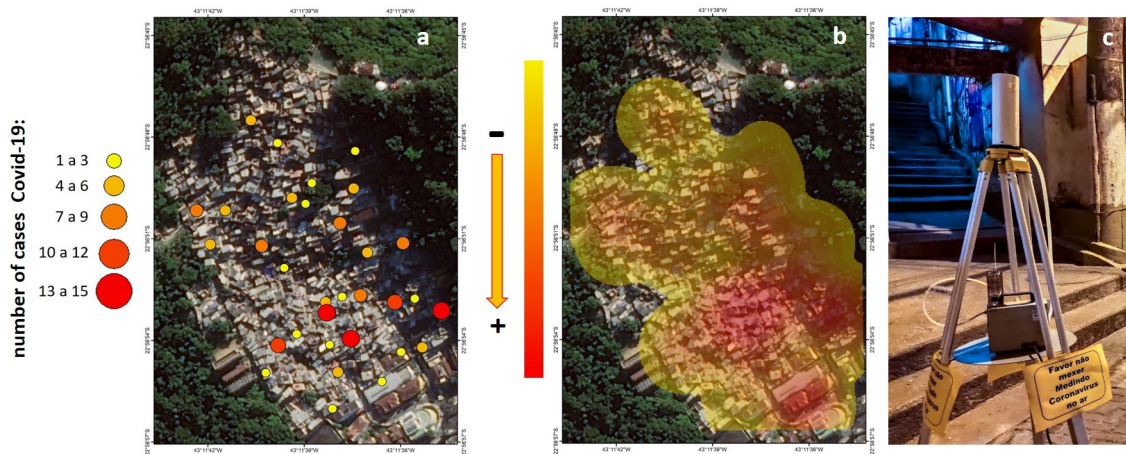
332

333 **Figure 5.** Linear regression (central curve) between the normalized number of cases of Covid-
334 19 (see text) in Santa Marta Slum and the sanitization activities. External curves represent the
335 confidence level of the regression.

336

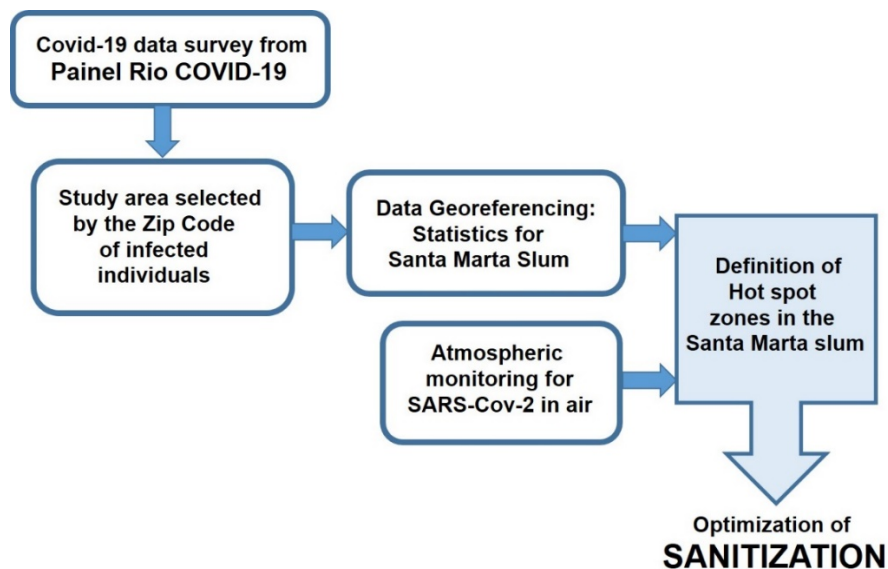
337 Considering the difficulties in maintaining an enduring sanitization program in the Santa
338 Marta slum, which represents an elevated financial cost, a collaboration was established between
339 the local community and the Rio de Janeiro State University-Uerj. By georeferencing Covid-19
340 individual data, based on a mobile app, and performing aerosol monitoring, the scientific team in
341 the university was able to detect hot spot locations in terms of cases and the ambient air detection
342 of the virus. From this, we constructed risk maps in which the volunteers could focus their

343 sanitization activity to optimize fieldwork performance and use smaller amounts of disinfectant
344 during shorter work schedules. Figure 6a,b shows the spatial distribution of Covid-19 cases in the
345 Santa Marta slum and the resulting product with the application of the kriging method of data
346 interpolation over a satellite image from Google maps of the study site. During the pandemic,
347 Covid-19 cases were more concentrated in the lower parts of the slum where we find common
348 passages of inhabitants and therefore are locations of more intense circulation of people and
349 small markets.
350



351
352 **Figure 6.** Summary of activities developed at Santa Marta slum: **(a)** spatially distributed of
353 Covid-19 cases in December 21st, 2020 (database from <https://covidporcep.rio.br/>) and
354 georeferencing; **(b)** kriging map and definition of hot spots for sanitization activity; **(c)** aerosol
355 sampling at Santa Marta slum (PIXE sampler).

356
357 Owing to mitigate the Covid-19 incidence and optimize the sanitization activity, it is shown
358 in Figure 7 a summary box diagram illustrating the working steps from the data georeferencing to
359 the sanitization optimization in the Santa Marta slum.
360



361
362
363
364

Figure 7. Box diagram illustrating the sequence of activities (database georeferencing and bioaerosols monitoring) for planning and sanitization optimization at Santa Marta slum/Rio de Janeiro City.

365

366 5. Conclusions

367 To many underdeveloped countries, Covid-19 highlighted unsolved long-term social-
368 economic problems. Data of *in situ* effectiveness of sanitization activities in outdoor ambient for
369 SARS-CoV-2 is scarce in the present literature and poorly evaluated in real world situations.
370 Although, in general, sanitization has been approached as a controversial activity in terms of
371 effectiveness, our data pointed to real effectiveness in a site of low health care attendance. Our
372 results for Santa Marta slum showed that (1) SARS-CoV-2 was detected in near ground ambient
373 air in diameters ranging from 0.25 to d 0.5 μm demonstrating that there is a circulation of the virus
374 in the slum atmosphere; (2) sanitization activities can provide positive results, especially if it is
375 maintained in high frequency.

376

377 Conflict of Interest

378 The authors declare that the research was conducted in the absence of any commercial or
379 financial frameworks that could be construed as a potential conflict of interest.

380

381 Author Contributions

382 All authors contributed equally to the development of the project and the writing of the manuscript.
383 Specifically, Prof. Heitor Evangelista (Project PI, created the concept of the project and
384 participated in all outdoor samplings and development of methods); Prof. Luís Cristóvão Porto
385 and Ms. Angela M.G. dos Santos performed the rt-PCR analysis; Dr. Sérgio J. Gonçalves Junior,
386 Dr. Juliana Nogueira, MS. Rodrigo G. Barbosa, Dr. Eduardo Delfino Sodr e participated and
387 coordinated all outdoor samplings, Dr. Marcio Cataldo Gomes da Silva and Dr. Daniel A.J. de
388 Oliveira added new considerations in the text content and discussions, Dr. Newton Magalhães
389 did the georeferencing methods, Prof. Cesar Amaral revised the text content, discussions and

390 molecular analysis, Prof. Ricardo H.M. Godoi and Dr. Sérgio J. Gonçalves Junior allowed aerosol
391 technology to the project.

392

393 **Funding**

394 We greatly thank IAEA – International Atomic Energy Agency for funding the project and
395 supporting donations of materials and equipment. FAPERJ for funding number SEI-
396 260003/002691/2020. Ref. 210.236/2020.

397

398 **Acknowledgments**

399 We greatly thank Mr. Thiago Firmino and Mr. Thandy Firmino, and the Santa Marta sanitization
400 team for logistics and discussion on routine life and work at slums in Rio de Janeiro City. We
401 thank Ms. Roberta Priori for helping with the map edition and graduate student Enzo H.B.E. da
402 Silva for statistic surveys.

403

404 **References**

405 1. Comunian S, Dongo D, Milani C, Palestini P. Air pollution and COVID-19: the role of
406 particulate matter in the spread and increase of COVID-19's morbidity and mortality.
407 International journal of environmental research and public health. 2020;17(12):4487.

408 2. Wang CC, Prather KA, Sznitman J, Jimenez JL, Lakdawala SS, Tufekci Z, et al. Airborne
409 transmission of respiratory viruses. Science. 2021;373(6558):eabd9149.

410 3. Wu X, Nethery RC, Sabath MB, Braun D, Dominici F. Air pollution and COVID-19 mortality
411 in the United States: Strengths and limitations of an ecological regression analysis. Science
412 advances. 2020;6(45):eabd4049.

413 4. Liu Y, Ning Z, Chen Y, Guo M, Liu Y, Gali NK, et al. Aerodynamic analysis of SARS-CoV-2
414 in two Wuhan hospitals. Nature. 2020;582(7813):557–60.

415 5. Harrison AG, Lin T, Wang P. Mechanisms of SARS-CoV-2 transmission and pathogenesis.
416 Trends in immunology. 2020;

417 6. WHO. Report of the WHO-China Joint Mission on Coronavirus Disease 2019 (COVID-19)
418 [Internet]. 2020 [cited 2022 Jan 17]. Available from: [https://www.who.int/publications-detail-
419 redirect/report-of-the-who-china-joint-mission-on-coronavirus-disease-2019-\(covid-19\)](https://www.who.int/publications-detail-redirect/report-of-the-who-china-joint-mission-on-coronavirus-disease-2019-(covid-19))

420 7. CDC. Coronavirus Disease 2019 (COVID-19) [Internet]. Centers for Disease Control and
421 Prevention. 2020 [cited 2022 Jan 17]. Available from:
422 [https://www.cdc.gov/coronavirus/2019-ncov/science/science-briefs/sars-cov-2-
423 transmission.html](https://www.cdc.gov/coronavirus/2019-ncov/science/science-briefs/sars-cov-2-transmission.html)

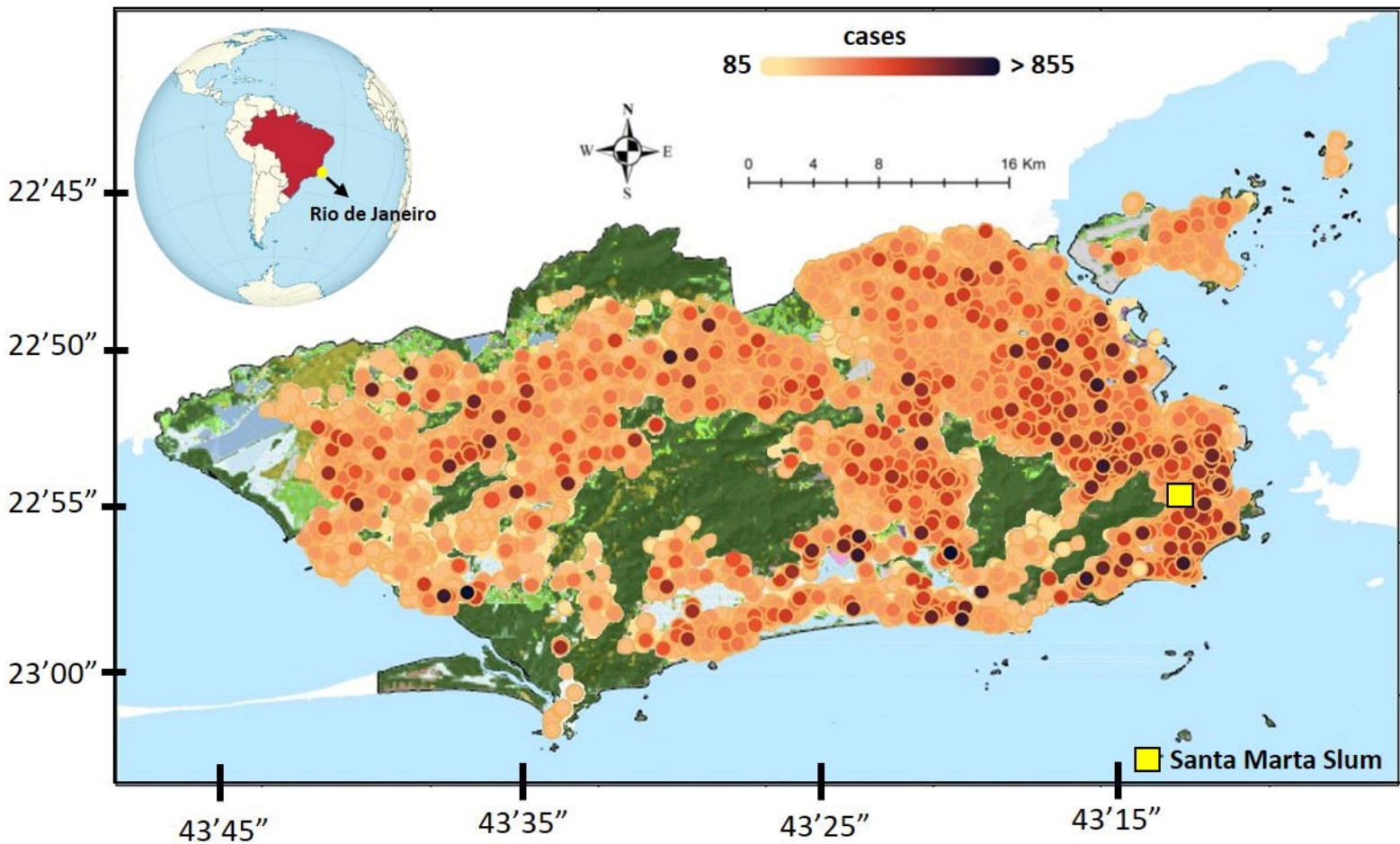
424 8. Ahmed W, Angel N, Edson J, Bibby K, Bivins A, O'Brien JW, et al. First confirmed detection
425 of SARS-CoV-2 in untreated wastewater in Australia: a proof of concept for the wastewater
426 surveillance of COVID-19 in the community. Science of The Total Environment.
427 2020;728:138764.

428 9. Medema G, Heijnen L, Elsinga G, Italiaander R, Brouwer A. Presence of SARS-
429 Coronavirus-2 RNA in sewage and correlation with reported COVID-19 prevalence in the
430 early stage of the epidemic in the Netherlands. Environmental Science & Technology
431 Letters. 2020;7(7):511–6.

432 10. Wurtzer S, Marechal V, Mouchel J-M, Moulin L. Time course quantitative detection of SARS-
433 CoV-2 in Parisian wastewaters correlates with COVID-19 confirmed cases. MedRxiv. 2020;

- 434 11. Prado T, Fumian TM, Mannarino CF, Maranhão AG, Siqueira MM, Miagostovich MP.
435 Preliminary results of SARS-CoV-2 detection in sewerage system in Niterói municipality,
436 Rio de Janeiro, Brazil. *Memórias do Instituto Oswaldo Cruz*. 2020;115.
- 437 12. Wu F, Xiao A, Zhang J, Moniz K, Endo N, Armas F, et al. SARS-CoV-2 titers in wastewater
438 foreshadow dynamics and clinical presentation of new COVID-19 cases. *Medrxiv*. 2020;
- 439 13. D'Amico F, Baumgart DC, Danese S, Peyrin-Biroulet L. Diarrhea during COVID-19 infection:
440 pathogenesis, epidemiology, prevention, and management. *Clinical Gastroenterology and*
441 *hepatology*. 2020;18(8):1663–72.
- 442 14. Chin AW, Chu JT, Perera MR, Hui KP, Yen H-L, Chan MC, et al. Stability of SARS-CoV-2
443 in different environmental conditions. *The Lancet Microbe*. 2020;1(1):e10.
- 444 15. EPA. Disinfectant Use and Coronavirus (COVID-19) [Internet]. 2020 [cited 2022 Jan 18].
445 Available from: [https://www.epa.gov/coronavirus/disinfectant-use-and-coronavirus-covid-](https://www.epa.gov/coronavirus/disinfectant-use-and-coronavirus-covid-19)
446 [19](https://www.epa.gov/coronavirus/disinfectant-use-and-coronavirus-covid-19)
- 447 16. Pitol AK, Julian TR. Community transmission of SARS-CoV-2 by surfaces: risks and risk
448 reduction strategies. *Environmental Science & Technology Letters*. 2021;8(3):263–9.
- 449 17. Van Doremalen N, Bushmaker T, Morris DH, Holbrook MG, Gamble A, Williamson BN, et
450 al. Aerosol and surface stability of SARS-CoV-2 as compared with SARS-CoV-1. *New*
451 *England journal of medicine*. 2020;382(16):1564–7.
- 452 18. Xu Z, Wei K, Wu Y, Shen F, Chen Q, Li M, et al. Enhancing bioaerosol sampling by
453 Andersen impactors using mineral-oil-spread agar plate. *PLoS One*. 2013;8(2):e56896.
- 454 19. Hogan Jr CJ, Kettleson EM, Lee M-H, Ramaswami B, Angenent LT, Biswas P. Sampling
455 methodologies and dosage assessment techniques for submicrometre and ultrafine virus
456 aerosol particles. *Journal of Applied Microbiology*. 2005 Dec 1;99(6):1422–34.
- 457 20. Łukaszuk C, Krajewska-Kułak E, Guzowski A, Kułak W, Kraszyńska B. Comparison of the
458 Results of Studies of Air Pollution Fungi Using the SAS Super 100, MAS 100, and Air IDEAL.
459 *International journal of environmental research and public health*. 2017;14(7):815.
- 460 21. Tang JW, Bahnfleth WP, Bluysen PM, Buonanno G, Jimenez JL, Kurnitski J, et al.
461 Dismantling myths on the airborne transmission of severe acute respiratory syndrome
462 coronavirus (SARS-CoV-2). *Journal of Hospital Infection*. 2021;
- 463 22. Marr LC, Tang JW, Van Mullekom J, Lakdawala SS. Mechanistic insights into the effect of
464 humidity on airborne influenza virus survival, transmission and incidence. *Journal of the*
465 *Royal Society Interface*. 2019;16(150):20180298.
- 466 23. Madas BG, Fűri P, Farkas Á, Nagy A, Czitrovsky A, Balásházy I, et al. Deposition
467 distribution of the new coronavirus (SARS-CoV-2) in the human airways upon exposure to
468 cough-generated aerosol. *arXiv preprint arXiv:200505882*. 2020;
- 469 24. WHO. Enhancing Readiness for Omicron (B.1.1.529): Technical Brief and Priority Actions
470 for Member States [Internet]. 2021 [cited 2022 Jan 17]. Available from:
471 [https://www.who.int/publications/m/item/enhancing-readiness-for-omicron-\(b.1.1.529\)-](https://www.who.int/publications/m/item/enhancing-readiness-for-omicron-(b.1.1.529)-technical-brief-and-priority-actions-for-member-states)
472 [technical-brief-and-priority-actions-for-member-states](https://www.who.int/publications/m/item/enhancing-readiness-for-omicron-(b.1.1.529)-technical-brief-and-priority-actions-for-member-states)
- 473 25. Kupferschmidt K. Fast-spreading UK virus variant raises alarms. *Science*.
474 2021;371(6524):9–10.

475



Aerosol sampling method	Rocinha		Santa Marta	
	E	RP	E	RP
Andersen head	Undetermined	Undetermined	NI	NI
Bioflask	Undetermined	Undetermined	Undetermined	Undetermined
MAS-100/Merck	Undetermined	Undetermined	Undetermined	RP
Aerosol size: 16-8 μ m	Undetermined	Undetermined	Undetermined	Undetermined
Aerosol size: 8-4 μ m	Undetermined	Undetermined	Undetermined	Undetermined
Aerosol size: 4-2 μ m	Undetermined	Undetermined	Undetermined	Undetermined
Aerosol size: 2-1 μ m	Undetermined	RP	Undetermined	Undetermined
Aerosol size: 1-0.5 μ m	Undetermined	Undetermined	Undetermined	Undetermined
Aerosol size: 0.5-0.25 μ m	Undetermined	RP	E	Undetermined
Aerosol size: 0.25-0.12 μ m	Undetermined	Undetermined	Undetermined	Undetermined
Aerosol size: 0.12-0.06 μ m	Undetermined	Undetermined	Undetermined	Undetermined
Aerosol size: < 0.06 μ m	Undetermined	Undetermined	Undetermined	Undetermined

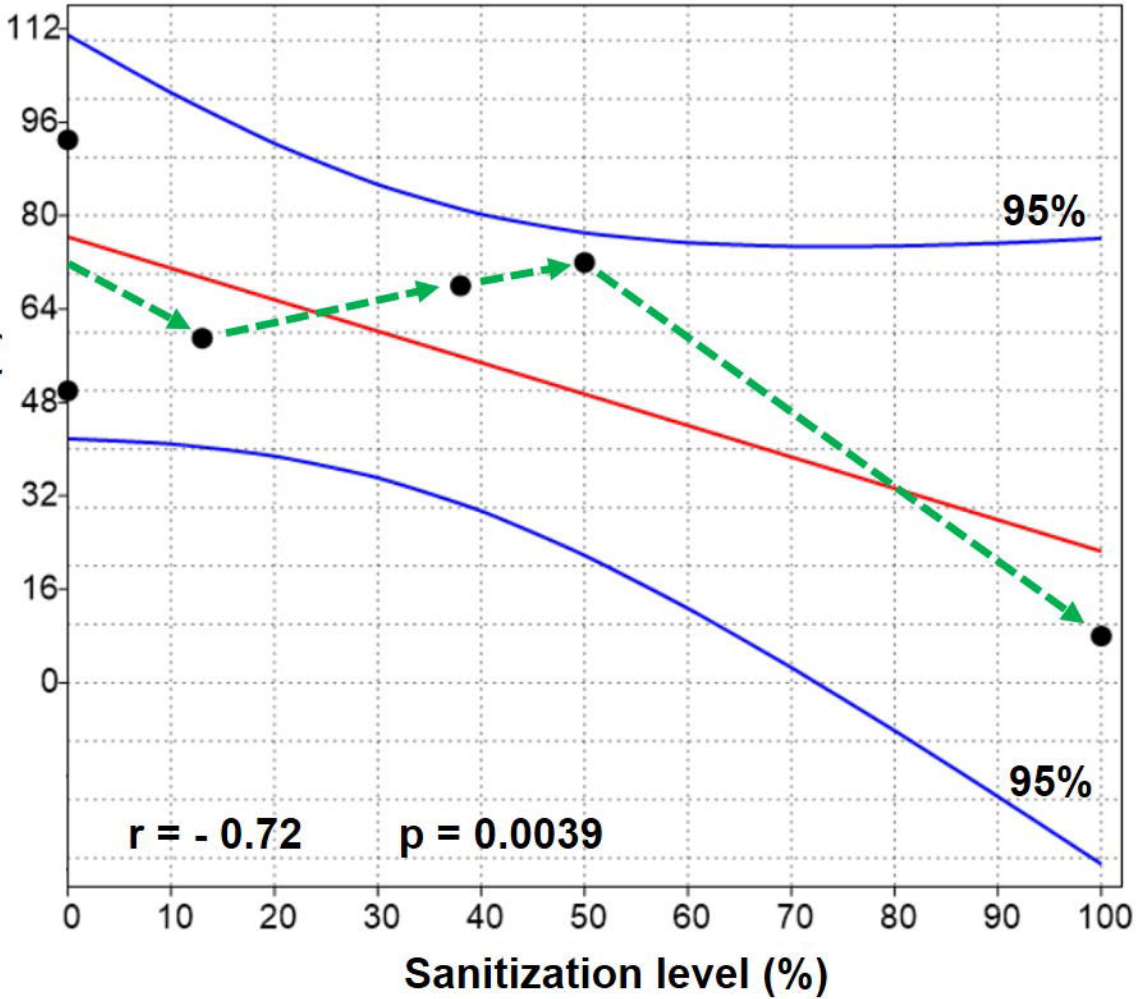
 Undetermined

 RP

 E

 NI

cummulative Covid-19 cases
(n)



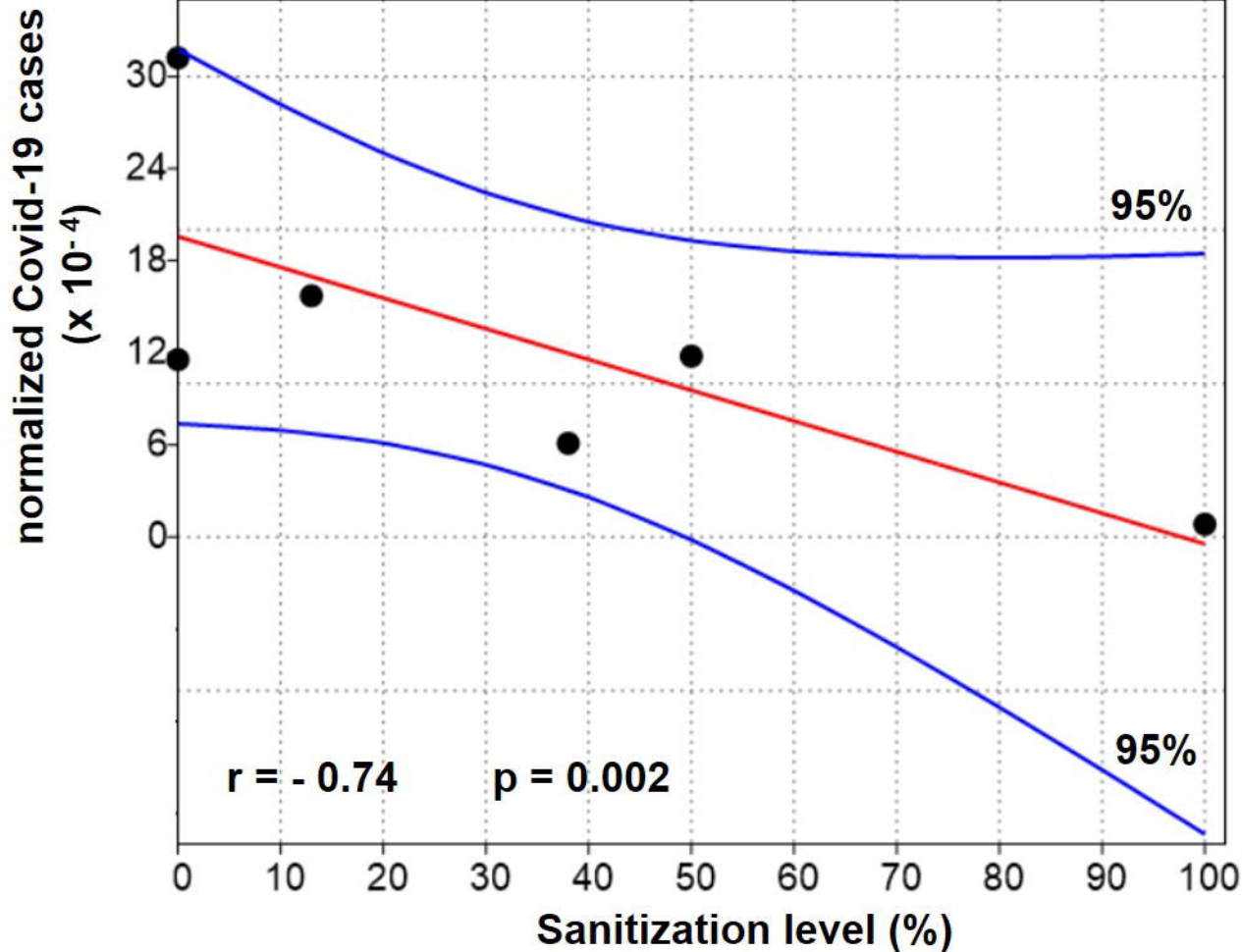
95%

95%

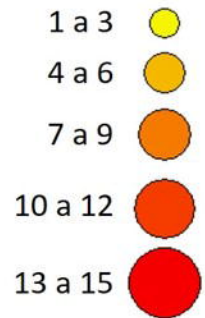
$r = -0.72$

$p = 0.0039$

Sanitization level (%)



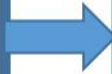
number of cases Covid-19:



**Covid-19 data survey from
Painel Rio COVID-19**



**Study area selected
by the Zip Code
of infected
individuals**

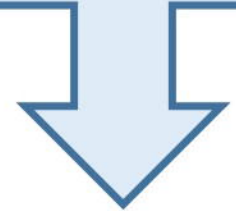


**Data Georeferencing:
Statistics for
Santa Marta Slum**



**Definition of
Hot spot
zones in the
Santa Marta slum**

**Atmospheric
monitoring for
SARS-Cov-2 in air**



**Optimization of
SANITIZATION**