

1 **Adaptive immune responses to SARS-CoV-2 in recovered severe COVID-19**
2 **patients**

3 Beatriz Olea¹, Eliseo Albert¹, Ignacio Torres¹, Paula Amat², María José Remigia²,
4 Roberto Gozalbo-Rovira³, Jesús Rodríguez-Díaz³, Javier Buesa^{1,3}, María Luisa Blasco⁴,
5 Josep Redón^{5,6}, Jaime Signes-Costa⁷ and David Navarro^{1,3*}

6 ¹*Microbiology Service, Clinic University Hospital, INCLIVA Health Research Institute,*
7 *Valencia, Spain.*

8 ²*Hematology Service, Clinic University Hospital, INCLIVA Health Research Institute,*
9 *Valencia, Spain.*

10 ³*Department of Microbiology, School of Medicine, University of Valencia, Valencia,*
11 *Spain.*

12 ⁴*Medical Intensive Care Unit, Clinic University Hospital, INCLIVA Health Research*
13 *Institute, Valencia, Spain.*

14 ⁵*Internal Medicine Department, Clinic University Hospital, INCLIVA Health Research*
15 *Institute, Valencia, Spain.*

16 ⁶*Department of Medicine, School of Medicine, University of Valencia, Valencia, Spain.*

17 ⁷*Pneumology Service, Clinic University Hospital, INCLIVA Health Research Institute,*
18 *Valencia, Spain*

19

20 ***Correspondence:** David Navarro, Microbiology Service, Hospital Clínico
21 Universitario, Instituto de Investigación INCLIVA, Valencia, and Department of
22 Microbiology, University of Valencia, Valencia, Spain. Av. Blasco Ibáñez 17, 46010
23 Valencia, Spain. Phone: 34(96)1973500; Fax: 34(96)3864173; E-mail:
24 david.navarro@uv.es.

25

26 **ABSTRACT**

27 **Objectives:** There is an imperative need to determine the durability of adaptive
28 immunity to SARS-CoV-2. We enumerated SARS-CoV-2-reactive CD4⁺ and CD8⁺ T
29 cells targeting S1 and M proteins and measured RBD-specific serum IgG over a period
30 of 2-6 months after symptoms onset in a cohort of subjects who had recovered from
31 severe clinical forms of COVID-19.

32 **Methods:** We recruited 58 patients (38 males and 20 females; median age, 62.5 years),
33 who had been hospitalized with bilateral pneumonia, 60% with one or more
34 comorbidities. IgG antibodies binding to SARS-CoV-2 RBD were measured by ELISA.
35 SARS-CoV-2-reactive CD69⁺-expressing-IFN γ -producing-CD4⁺ and CD8⁺ T cells were
36 enumerated in heparinized whole blood by flow cytometry for ICS.

37 **Results:** Detectable SARS-CoV-2-S1/M-reactive CD69⁺-IFN- γ CD4⁺ and CD8⁺ T cells
38 were displayed in 17 (29.3%) and 6 (10.3%) subjects respectively, at a median of 84
39 days after onset of symptoms (range, 58-191 days). Concurrent comorbidities increased
40 the risk (OR, 3.15; 95% CI, 1.03-9.61; $P=0.04$) of undetectable T-cell responses in
41 models adjusted for age, sex and hospitalization ward. Twenty-one out of the 35
42 patients (60%) had detectable RBD-specific serum IgGs at a median of 118 days (range,
43 60 to 145 days) after symptoms onset. SARS-CoV-2 RBD-specific IgG serum levels
44 were found to drop significantly over time.

45 **Conclusion:** A relatively limited number of subjects who developed severe forms of
46 COVID-19 had detectable SARS-CoV-2-S1/M IFN γ CD4⁺ and CD8⁺ T cells at
47 midterm after clinical diagnosis. Our data also indicated that serum levels of RBD-
48 specific IgGs decline over time, becoming undetectable in some patients.

49

50 **KEY WORDS:** SARS-CoV-2, COVID-19, T cells, Receptor Binding Domain-specific
51 IgG antibodies.

52 **INTRODUCTION**

53 Experimental evidence supports a major role of neutralizing antibodies (NtAb) and
54 skewed Th1 functional immune responses in preventing and controlling SARS-CoV-2
55 infection [1-4]. Epitopes eliciting NtAb have been mapped within all SARS-CoV-2
56 structural proteins; among these, NtAbs targeting the receptor binding domain (RBD) of
57 the viral spike protein (S) appear to display maximum specificity and potency [5-7].
58 Broad specificity to structural and non-structural proteins has been reported across
59 SARS-CoV-2-reactive CD4⁺ and CD8⁺ T cells, of which S, membrane (M) and
60 nucleocapsid (N) proteins are immunodominant in most individuals [8-18]. Both SARS-
61 CoV-2-specific NtAb and T cells are readily detectable in a large proportion of acute or
62 short-term convalescent COVID-19 patients [8-18], although the strength of adaptive
63 immune responses may be modulated by the severity of the disease [1-4]. Data on
64 SARS-CoV infection suggest that memory B and T cells have a potential for long-
65 lasting persistence (over years) [19,20], yet the durability of SARS-CoV-2 adaptive
66 immunity remains to be established. Determining whether SARS-CoV-2 B- and T-cell
67 responses persist over time following natural infection or after vaccination seems of
68 paramount relevance in designing effective public health policies to prevent virus
69 transmission and spread. In the current study we enumerated SARS-CoV-2-reactive
70 CD4⁺ and CD8⁺ T cells targeting S and M proteins, and measured IgG antibodies
71 binding to RBD of S protein, along a timeframe of up to 6 months after symptoms onset
72 in a cohort of recovered COVID-19 patients who had been hospitalized due to severe
73 clinical forms of the disease.

74 **PATIENTS AND METHODS**

75 **Patients and specimens**

76 A total of 58 non-consecutive patients (38 males and 20 females; median age, 62.5
77 years; range, 27 to 82 years) were recruited at the COVID-19 follow-up unit of Hospital
78 Clínico Universitario of Valencia, at a median of 85 days (range, 58 to 191 days) after
79 onset of COVID-19 symptoms. SARS-CoV-2 infection was diagnosed by RT-PCR
80 (between February 26 and May 16) [21]. The only patient inclusion criterion was the
81 availability of serum and/or whole blood specimens for B- and T-cell immunity
82 analyses described below. Medical history and laboratory data were retrospectively
83 reviewed. Clinical severity of COVID-19 was graded following World Health
84 Organization criteria [22]. Whole blood was also collected from seven non-SARS-CoV-
85 2-exposed healthy individuals (up to March 2020) who served as controls. The current
86 study was approved by the Research Ethics Committee of Hospital Clínico
87 Universitario INCLIVA (March 2020).

88 **SARS-CoV-2 RBD IgG immunoassay**

89 IgG antibodies binding to SARS-CoV-2 RBD made in Sf9 cells infected with
90 recombinant baculoviruses (Invitrogen, CA, USA) were measured by an enzyme-linked
91 immunosorbent assay (ELISA) as previously described [23].

92 **SARS-CoV-2-reactive IFN- γ CD4⁺ and CD8⁺ T cells**

93 SARS-CoV-2-reactive CD69⁺-expressing-IFN γ -producing-CD4⁺ and CD8⁺ T cells were
94 enumerated in heparinized whole blood by flow cytometry for intracellular cytokine
95 staining (ICS) (BD Fastimmune, BD Biosciences, San Jose, CA, USA) as previously
96 described [21]. Two sets of 15-mer overlapping peptides (11 mer overlap)
97 encompassing the SARS-CoV-2 Spike glycoprotein N-terminal 1-643 amino acid

98 sequence (158 peptides) and the entire sequence of SARS-CoV-2 M protein (53
99 peptides), were used in combination for stimulation (1 μ g/ml per peptide) during 6 h,
100 in the presence of CD28 and CD49d costimulatory mAbs and brefeldin A (10 μ g/ml),
101 the latter after two hour incubation. Peptide mixes were obtained from JPT Peptide
102 Technologies GmbH (Berlin, Germany). The appropriate positive (phytohemagglutinin)
103 and isotype controls were used. The total number of SARS-CoV-2-reactive CD8⁺ T
104 cells was calculated by multiplying the percentages of CD4⁺ or CD8⁺ T cells producing
105 IFN γ on stimulation (after background subtraction) by the absolute CD4⁺ or CD8⁺ T-
106 cell counts. Responses $\geq 0.1\%$ were considered specific [21].

107 **Laboratory measurements**

108 Clinical laboratory investigation included serum levels IL-6, ferritin and Dimer-D,
109 which were monitored at least twice weekly during hospital stay.

110 **Statistical methods**

111 Frequency comparisons for categorical variables were carried out using the Fisher exact
112 test. Differences between medians were compared using the Mann–Whitney U-test. The
113 Spearman’s rank test was used for analysis of correlation between continuous variables.
114 For logistic regression analyses, variables with *P* values < 0.1 in univariate models were
115 included in multivariate models. Two-sided exact *P*-values were reported. A *P*-value
116 < 0.05 was considered statistically significant. The analyses were performed using SPSS
117 version 20.0 (SPSS, Chicago, IL, USA).

118 **RESULTS**

119 **Patient clinical features**

120 All 58 patients in this cohort developed severe forms of COVID-19 requiring
121 hospitalization either in the intensive care unit (ICU) (n=21) or in other hospital wards
122 (n=37). All patients presented with bilateral pneumonia and 60% had one or more
123 comorbidities, including diabetes mellitus, asthma, hypertension, dyslipidemia, cancer
124 or chronic lung disease. All ICU patients underwent mechanical ventilation. Median
125 hospitalization of patients was 16 days (range, 6-61 days). Patients in the two groups
126 were matched for age, sex and comorbidities (not shown).

127 **SARS-CoV-2-reactive IFN- γ CD4⁺ and CD8⁺ T cells in recovered COVID-19**
128 **patients**

129 SARS-CoV-2-S1/M-reactive CD69⁺-IFN- γ CD4⁺ and CD8⁺ T cells were enumerated at
130 a median of 84 days after symptoms onset (range, 58-191 days). Representative plots
131 are shown in Supplementary Figure 1. Of the 58 patients, 17 (29.3%) and 6 (10.3%) had
132 detectable SARS-CoV-2 CD4⁺ and CD8⁺ T-cell responses, respectively. Only two
133 patients displayed both SARS-CoV-2-reactive T-cell subsets. SARS-CoV-2 CD4⁺ and
134 CD8⁺ T-cell counts ranged from 0.98 to 43.75 cells/ μ L, and from 0.48 to 2.98 cells/ μ L,
135 respectively (median, 4.83 and 1.13 cells/ μ L, respectively).

136 Figure 1A shows SARS-CoV-2 T-cell reactivity according to the sampling timeframe
137 after symptoms onset (arbitrarily categorized as 2-3 months vs. > 3 months). Overall,
138 we found no difference between the percentage of patients with or without detectable
139 CD4⁺ ($P=0.40$) or CD8⁺ ($P=0.12$) T cells across comparison groups; nevertheless, none
140 of the patients sampled beyond day 130 after COVID-19 presentation (n=3) exhibited
141 either SARS-CoV-2 CD4⁺ or CD8⁺ T-cell responses. Of note, patients with or without
142 detectable SARS-CoV-2-reactive T cells were monitored within a comparable

143 timeframe (median, 91 days; range, 60 to 118 days vs. median 83 days, range, 58 to 191
144 days; $P=0.18$).

145 **SARS-CoV-2 RBD-specific IgGs in recovered COVID-19 patients**

146 Serum specimens for quantitation of SARS-CoV-2 RBD-specific IgGs were available
147 from 35 patients, and collected at a median of 118 days (range, 60 to 145 days) from
148 onset of symptoms. Twenty-one of the 35 patients (60%) had detectable RBD-specific
149 IgGs (median, 1.8 AU/mL; range, 0.99-4.14 AU/mL). RBD-specific IgG reactivity
150 according to time of sampling (2-3 months vs. >3 months) is shown in Figure 1B. A
151 comparable number of patients had detectable responses at both time points ($P=0.84$).

152 Out of the 21 patients exhibiting RBD-specific IgG reactivity, 10 (47.6%) had
153 measurable SARS-CoV-2 T-cell responses (CD4⁺ T cells in 6 patients and CD8⁺ T cells
154 in the remainder). Of the 14 patients lacking RBD-specific IgGs, 5 had detectable
155 SARS-CoV-2 CD4⁺ T cells and none had SARS-CoV-2 CD8⁺ T cells.

156 Eighteen of the 35 patients had paired serum samples collected at the time of
157 hospitalization (median, 22 days after symptoms onset; range, 8-34 days) and after
158 recovery (median, 120 days after symptoms onset; range 93-145 days); paired
159 specimens were analyzed in parallel. SARS-CoV-2 RBD-specific IgGs were detectable
160 in 17 patients at the first time point and 14 at the latter. As shown in Figure 2, SARS-
161 CoV-2 RBD-specific IgG serum levels were found to drop significantly over time (from
162 a median of 4.97 AU/ml to a median of 1.51 AU/ml; $P<0.001$).

163 Finally, we found no correlation between SARS-CoV-2 RBD-specific IgG levels and
164 SARS-CoV-2 CD4⁺ and CD8⁺ T-cell counts ($P=0.12$ and $P=0.14$, respectively) in
165 recovered COVID-19 patients.

166 **Demographic, clinical and biological factors associated with detectable SARS-**
167 **CoV-2-reactive T cells or RBD-specific IgGs in recovered COVID-19 patients**

168 The detection rate of SARS-CoV-2-reactive T cells (either CD4⁺, CD8⁺ or both) was
169 comparable across patients admitted to ICU or other medical wards ($P=0.82$) (Table 1).
170 Likewise, both median SARS-CoV-2 CD4⁺ and CD8⁺ T-cell counts were similar
171 between groups (Figure 3). Neither age nor sex was found to influence either the
172 likelihood (Table 1) or magnitude (Figure 2) of detectable SARS-CoV-2 T-cell
173 responses. In contrast, patients displaying one or more comorbidities were significantly
174 ($P=0.04$) less likely to exhibit detectable T-cell responses (Table 1), although median T-
175 cell counts were not significantly dissimilar across comparison groups (Figure 3). In
176 fact, comorbidities increased the risk (OR, 3.15; 95% CI, 1.03-9.61; $P=0.04$) of
177 undetectable T-cell responses in logistic regression models adjusted for age, sex and
178 hospitalization ward (ICU vs. others).

179 The likelihood of detecting SARS-CoV-2-RBD-specific IgGs was not influenced by age
180 ($P=0.67$), or presence of comorbidities ($P=0.65$), but was higher in males ($P=0.004$) and
181 in ICU patients ($P=0.019$) (Table 1). Both factors were found to increase the likelihood
182 of detecting an antibody response in multivariate models adjusted for age and
183 comorbidities (OR, 11.71; 95% CI, 1.86-73.7; $P=0.009$ and OR, 6.57; 95% CI, 1.04-
184 41.4; $P=0.04$, respectively). Nevertheless, neither of these parameters had a significant
185 impact on serum SARS-CoV-2 IgG levels (not shown).

186 The net state of inflammation shortly after viral infections may shape the quality and
187 strength of ongoing adaptive immunity responses [24]. In this context, we next
188 compared serum peak levels of several inflammatory biomarkers, including IL-6,
189 ferritin and Dimer-D, measured within the first 15 days after hospitalization among

190 recovered COVID-19 patients with or without detectable SARS-CoV-2 T-cell
191 responses. As shown in Figure 4, no significant differences were found between
192 comparison groups for any of these parameters. A similar observation was made for
193 SARS-RBD-specific IgGs (not shown). Furthermore, was observed either weak or no
194 correlation between serum peak levels of IL-6, ferritin or Dimer-D and SARS-CoV-2
195 CD4⁺ and CD8⁺ T-cell counts or SARS-CoV-2 RBD-specific IgG levels
196 (Supplementary Table 1).

197 **DISCUSSION**

198 A large body of evidence has accumulated on the features of SARS-CoV-2-specific
199 adaptive immunity in patients who recovered from mild or severe clinical forms of
200 COVID-19 [1-4,8-18,23]. To our knowledge, these studies mostly involved recently
201 recovered patients (up to 3 months from onset of symptoms), of whom a large
202 percentage (45-95%) consistently exhibited both T- and B-cell responses. The dynamics
203 of such immune responses beyond this time point remains largely unexplored.
204 Elucidating whether SARS-CoV-2-targeted T- and B-cell responses persist over time
205 following natural infection, and if so for how long, is of paramount relevance from a
206 clinical and public health perspective, mainly because it may allow us to predict
207 susceptibility to reinfections upon re-exposure. The key issue to resolve is whether
208 SARS-CoV-2 T- and B-cell memory responses are durable (over years), as may occur
209 following SARS-CoV infection [19,20], or instead wane over a short period until
210 undetectable, as seen in seasonal coronavirus infections [20].

211 Here, we assessed SARS-CoV-2 T- and B-cell immune responses in patients who had
212 recovered from severe COVID-19 at medium term (from 2 to 6 months) after disease
213 presentation. We used a whole blood flow cytometry ICS method for detection and

214 enumeration of activated and functional (IFN- γ -producing) SARS-CoV-2-reactive
215 CD4⁺ and CD8⁺ T cells, targeting the S1 region of the S protein and the M protein. Both
216 proteins contain highly immunodominant HLA-I and HLA-II restricted epitopes
217 eliciting readily detectable activated and/or functional T cells (CD4⁺ T cells more
218 frequently), in most convalescent or short-term recovered COVID-19 patients [10-18].
219 Like other SARS-CoV-2 T-cell immunoassays [11,12,14,15], our ICS assay appears
220 capable of quantifying coronavirus cross-reactive T cells, as two out of seven non-
221 exposed individuals exhibited detectable responses (not shown).

222 Likewise, RBD-specific IgG levels strongly correlate with NtAb titers as measured
223 using live or S-pseudotyped SARS-CoV-2, so they can be used as a proxy for inferring
224 the neutralizing activity of sera [6,7,23].

225 Several major findings arose from our study. First, SARS-CoV-2-S1/M-reactive-IFN- γ
226 CD4⁺ and CD8⁺ T cells were detected in a limited number of recovered patients from
227 severe COVID-19 (around 30% and 10% for CD4⁺ and CD8⁺ T cells, respectively).
228 Furthermore, we were unable to document SARS-CoV-2 T-cell reactivity beyond day
229 130 after COVID-19 diagnosis. This latter observation must be interpreted with caution
230 given the low number of patients (n=3) tested within that timeframe. In a previous study
231 also recruiting severe COVID-19 patients [21], we reported that around 40% of patients
232 were capable of mounting SARS-CoV-2-S1/M-reactive IFN- γ -producing CD8⁺ T cell
233 responses shortly after infection (median, 27 days after symptoms onset); in that study,
234 SARS-CoV-2-reactive CD4⁺ T cell responses were not assessed. Nevertheless, other
235 studies including hospitalized COVID-19 patients [11,12] found detectable functional
236 CD4⁺ T-cell responses to both S1 and M proteins in a large fraction of patients either
237 during the acute phase of the disease or at short-term convalescence. Taken collectively,
238 the above observations suggest that functional SARS-CoV-2-S1/M-reactive T-cell

239 frequencies in peripheral blood may wane over time. If confirmed in further studies, this
240 phenomenon may be associated with COVID-19 severity. In this sense it has been
241 postulated that exuberant or aberrant activation of the innate immune system upon
242 encounter with SARS-CoV-2, resulting in suboptimal expansion of functional T cells,
243 may be a hallmark in patients developing the severest forms of COVID-19 [1,25]. In
244 support of this assumption, around 60% of individuals who had experienced mild forms
245 of the disease were shown to display S1 and M-reactive T-cell responses by 6 months
246 after COVID-19 diagnosis [26]. Likewise, Dan et al. [27] reported that SARS-CoV-2-
247 (both S and M)-specific CD4⁺ and CD8⁺ T cells declined over time, with a half-life of
248 3-5 months in a cohort (n=41) skewed toward mild forms of COVID-19, although they
249 remained detectable in many subjects at more than 6 months after COVID-19 diagnosis.

250 Second, in the current series, 60% of individuals displayed detectable SARS-CoV-2-
251 RBD-specific IgGs at 2-5 months following COVID-19 diagnosis. In this context, it has
252 been consistently reported that RBD IgG seroconversion occurs almost universally in
253 moderate to severe COVID-19 patients within 3-4 weeks after onset of symptoms
254 [6,7,22]. The above data thus suggest that the likelihood of detecting such antibody
255 specificity in sera diminishes over time. Moreover, by analyzing paired serum
256 specimens collected within the first month after symptoms onset and by 3-5 months
257 after COVID-19 diagnosis in recovered individuals, we showed that the detection rate
258 decreased slightly (from 94% to 77%) over time, as was the case of SARS-CoV-2-
259 RBD-specific serum IgG levels.

260 Third, we found no correlation between SARS-CoV-2-reactive IFN- γ CD4⁺ T cells and
261 RBD-specific antibody levels, suggesting that SARS-CoV-2 T- and B-cell responses
262 may follow divergent kinetics, and perhaps that CD4⁺ T-cell help is not strictly required
263 to sustain SARS-CoV-2-RBD-specific IgG responses over the medium term, at least in

264 the population group analyzed herein. Other studies [10,28] found a strong correlation
265 between NtAb antibody titers and the numbers of virus-specific T cells targeting S or N
266 proteins in short-term convalescent individuals.

267 Fourth, frequency and logistic regression analyses identified presence of one or more
268 comorbidities, but not age, sex or COVID-19 severity (ICU vs. non-ICU), as a factor
269 presumably hampering the persistence of peripheral blood SARS-CoV-2-S1/M-reactive
270 T cells in recovered COVID-19 patients. As for RBD IgGs, both sex (male) and
271 COVID-19 severity appeared to increase the probability of detectable responses at
272 medium term after disease presentation, although neither of these had an impact on
273 RBD IgG levels.

274 Fifth, since uncontrolled inflammation driven by innate immune response shortly
275 following viral infection may negatively affect the strength and durability of arising T-
276 cell responses [23], we investigated whether serum peak levels of inflammatory
277 biomarkers (IL-6, Dimer-D and ferritin) measured early after COVID-19 presentation
278 (within 15 days) differed across recovered COVID-19 patients with or without
279 detectable SARS-CoV-2-reactive T cells or SARS-COV-2-RBG IgGs, finding no
280 variation. Moreover, little or no correlation was observed between the magnitude of
281 systemic inflammation and SARS-CoV-2 immune parameters.

282 The current study has several limitations that must be acknowledged; predominantly,
283 the reduced cohort size. Second, T-cell immunity analyses were conducted at a single
284 time point. We cannot rule out that detectability of the two SARS-CoV-2-reactive T
285 cells by the immunoassay used herein may fluctuate over time. Moreover, no whole
286 blood specimens drawn at the time of patient hospitalization were available for T-cell
287 immunity assessment. Third, T cells and antibodies targeting other antigen specificities,

288 which may afford protection against SARS-CoV-2, were not evaluated. Fourth, T-cell
289 functionalities other than IFN- γ production upon antigenic stimulation were not
290 explored. Fifth, we cannot be certain whether our whole blood T-cell immunoassay
291 might be less sensitive than others using fresh or cryopreserved isolated PBMCs. Sixth,
292 taking serum peak levels of IL-6, Dimer-D and ferritin during the first 15 days after
293 symptoms onset is an admittedly arbitrary time point for analyses which may not have
294 captured the true net state of systemic inflammation generated shortly after SARS-CoV-
295 2 infection.

296 In summary, we have shown that a relatively low number of subjects who developed
297 severe forms of COVID-19 had detectable SARS-CoV-2-S1/M IFN γ CD4⁺ and CD8⁺ T
298 cells at medium term after clinical diagnosis (up to 6 months), particularly those with
299 concurrent comorbidities. Our data also indicated that serum levels of RBD-specific
300 IgGs decline over time, becoming undetectable in some patients. Elucidating whether
301 individuals lacking these specific adaptive immune responses are susceptible to
302 reinfection is beyond the scope of the current study and needs to be addressed in future
303 research.

304 **ACKNOWLEDGMENTS**

305 We thank all personnel working at Clinic University Hospital for their unwavering
306 commitment in the fight against COVID-19.

307 **FINANCIAL SUPPORT**

308 This work received no public or private funds.

309 **CONFLICTS OF INTEREST**

310 The authors declare no conflicts of interest.

311 **AUTHOR CONTRIBUTIONS**

312 BO, EA, IT, PA, MJR and RG-R: Methodology and data validation. BO, EA, IT:
313 Formal analysis. JR-D, JB, DN: Conceptualization, supervision. MLB, JR and JS-C:
314 Clinical Staff in charge of patients. DN: writing the original draft. All authors reviewed
315 and approved the original draft.

316 **REFERENCES**

- 317 1. Shah VK, Firmal P, Alam A, Ganguly D, Chattopadhyay S. Overview of Immune
318 Response During SARS-CoV-2 Infection: Lessons From the Past. *Front Immunol*
319 2020;11:1949.
- 320 2. Zohar T, Alter G. Dissecting antibody-mediated protection against SARS-CoV-2. *Nat*
321 *Rev Immunol* 2020;20:392-394.
- 322 3. de Candia P, Prattichizzo F, Garavelli S, Matarese G. T Cells: Warriors of SARS-
323 CoV-2 Infection. *Trends Immunol* 2020; S1471-4906(20)30260-X.
- 324 4. Liu WJ, Zhao M, Liu K, Xu K, Wong G, Tan W, et al. T-cell immunity of SARS-
325 CoV: Implications for vaccine development against MERS-CoV. *Antiviral Res*
326 2017;137:82-92.
- 327 5. Rogers TF, Zhao F, Huang D, Beutler N, Burns A, He WT, et al. Isolation of potent
328 SARS-CoV-2 neutralizing antibodies and protection from disease in a small animal
329 model. *Science* 2020; 369:956-963.
- 330 6. Premkumar L, Segovia-Chumbez B, Jadi R, Martinez DR, Raut R, Markmann A, et
331 al. The receptor binding domain of the viral spike protein is an immunodominant and
332 highly specific target of antibodies in SARS-CoV-2 patients. *Sci Immunol*
333 2020;5:eabc8413.

- 334 7. Barnes CO, West AP Jr, Huey-Tubman KE, Hoffmann MAG, Sharaf NG, Hoffman
335 PR, et al. Structures of Human Antibodies Bound to SARS-CoV-2 Spike Reveal
336 Common Epitopes and Recurrent Features of Antibodies. *Cell* 2020; S0092-
337 8674(20)30757-1.
- 338 8. Weiskopf D, Schmitz KS, Raadsen MP, Grifoni A, Okba NMA, Endeman H, et al.
339 Phenotype and kinetics of SARS-CoV-2-specific T cells in COVID-19 patients with
340 acute respiratory distress syndrome. *Sci Immunol.* 2020;5:eabd2071.
- 341 9. Moderbacher CR, Ramirez SI, Dan JM, Grifoni A, Hastie KM, Weiskopf D, et al.
342 Antigen-specific adaptive immunity to SARS-CoV-2 in acute COVID-19 and
343 associations with age and disease severity. *Cell* 2020;183:1–17.
- 344 10. Ni L, Ye F, Cheng ML, Feng Y, Deng YQ, Zhao H, et al. Detection of SARS-CoV-
345 2-specific humoral and cellular immunity in COVID-19 convalescent
346 individuals. *Immunity* 2020;52:971–977.
- 347 11. Grifoni A, Weiskopf D, Ramirez SI, Mateus J, Dan JM, Moderbacher CR, et al.
348 Targets of T Cell responses to SARS-CoV-2 coronavirus in humans with COVID-19
349 disease and unexposed individuals. *Cell* 2020;181:1489–1501.
- 350 12. Braun J, Loyal L, Frentsch M, Wendisch D, Georg P, Kurth F, et al. SARS-CoV-2-
351 reactive T cells in healthy donors and patients with COVID-19. *Nature* 587:270-274.
- 352 13. Thieme CJ, Anft M, Paniskaki K, Blazquez-Navarro A, Doevelaar A, Seibert FS, et
353 al. Robust T cell response toward spike, membrane, and nucleocapsid SARS-CoV-2
354 proteins is not associated with recovery in critical COVID-19 Patients. *Cell Rep*
355 *Med* 2020; 1:100092..
- 356 14. Le Bert N, Tan AT, Kunasegaran K, Tham CYL, Hafezi M, Chia A, et al. SARS-
357 CoV-2-specific T cell immunity in cases of COVID-19 and SARS, and uninfected
358 controls. *Nature* 2020;584:457–462.

- 359 15. Mateus J, Grifoni A, Tarke A, Sidney J, Ramirez SI, Dan JM, et al. Selective and
360 cross-reactive SARS-CoV-2 T cell epitopes in unexposed humans. *Science* 370:89-94.
- 361 16. Chen Z, John Wherry E. T cell responses in patients with COVID-19. *Nat Rev*
362 *Immunol* 2020;20:529-536.
- 363 17. Sekine T, Perez-Potti A, Rivera-Ballesteros O, Strålin K, Gorin JB, Olsson A, et al.
364 Robust T Cell Immunity in Convalescent Individuals with Asymptomatic or Mild
365 COVID-19. *Cell* 2020;183:158-168.e14.
- 366 18. Rodda LB, Netland J, Shehata L, Pruner KB, Morawski PA, Thouvenel CD, et al.
367 Functional SARS-CoV-2-Specific Immune Memory Persists after Mild COVID-19.
368 *Cell* 2020; S0092-8674(20)31565-8.
- 369 19. Ng OW, Chia A, Tan AT, Jadi RS, Leong HN, Bertoletti A, Tan YJ. Memory T cell
370 responses targeting the SARS coronavirus persist up to 11 years post-infection. *Vaccine*
371 2016;34:2008–2014.
- 372 20. Altmann DM, Boyton RJ. SARS-CoV-2 T cell immunity: specificity, function,
373 durability, and role in protection. *Sci Immunol* 2020;5:eabd6160.
- 374 21. Giménez E, Albert E, Torres I, Remigia MJ, Alcaraz MJ, Galindo MJ, et al. SARS-
375 CoV-2-reactive interferon- γ -producing CD8⁺ T cells in patients hospitalized with
376 coronavirus disease 2019. *J Med Virol*. 2020 Jun 24:10.1002/jmv.26213.
- 377 22. Clinical Management of COVID-19. WHO/2019-nCoV/clinical/2020.5
- 378 23. Gozalbo-Rovira R, Gimenez E, Latorre V, Francés-Gómez C, Albert E, Buesa J, et
379 al. SARS-CoV-2 antibodies, serum inflammatory biomarkers and clinical severity of
380 hospitalized COVID-19 patients. *J Clin Virol* 2020;131:10461.
- 381 24. Condotta SA, Richer MJ. The immune battlefield: The impact of inflammatory
382 cytokines on CD8⁺ T-cell immunity. *PLoS Pathog* 2017;13:e1006618.

383 25. DiPiazza AT, Graham BS, Ruckwardt TJ. T cell immunity to SARS-CoV-2
384 following natural infection and vaccination. *Biochem Biophys Res Commun* 2020;
385 S0006-291X(20)31983-5

386 26. Breton G, Mendoza P, Hagglof T, Oliveira TY, Schaefer-Babajew D, Gaebler C, et
387 al. Persistent Cellular Immunity to SARS-CoV-2 Infection. *BiorXiv* 2020;
388 <https://doi.org/10.1101/2020.12.08.416636>.

389 27. Dan JM, Mateus J, Kato Y, Hastie KM, Faliti CE, Ramirez SI, et al. Immunological
390 memory to SARS-CoV-2 assessed for greater than six months after infection. *BiorXiv*
391 2020; doi: <https://doi.org/10.1101/2020.11.15.383323>.

392 28 Peng Y, Mentzer AJ, Liu G, Yao X, Yin Z, Dong D, et al. Broad and strong memory
393 CD4(+) and CD8(+) T cells induced by SARS-CoV-2 in UK convalescent individuals
394 following COVID-19. *Nat Immunol* 2020;21:1336-1345.

395 .

396 **FIGURE LEGENDS**

397 **Figure 1.** SARS-CoV-2 T- and B-cell responses in individuals recovered from severe
398 COVID-19. Peripheral blood SARS-CoV-2-S1/M-reactive CD69⁺-expressing IFN- γ -
399 producing CD4⁺ and CD8⁺ T cells (A) and SARS-CoV-2-RBD-specific IgG levels (B)
400 according to the time of sampling following symptoms onset. Bars indicate median
401 levels. *P* values are shown.

402 **Figure 2.** Kinetics of SARS-CoV-2-RBD-specific IgG levels in individuals recovered
403 from severe COVID-19. Serum levels of such an antibody specificity were measured at
404 the time of hospitalization (acute COVID-19) and 2-5 months afterwards (recovered
405 COVID-19). *P* value is shown.

406 **Figure 3.** Impact of demographics, hospitalization ward and comorbidities on
407 peripheral blood SARS-CoV-2-S1/M-reactive CD69⁺-expressing IFN- γ -producing
408 CD4⁺ and CD8⁺ T cells in subjects recovered from severe COVID-19. Bars indicate
409 median levels. *P* values are shown.

410 **Figure 4.** Serum peak levels of inflammatory biomarkers (IL-6, Ferritin and Dimer-D)
411 measured within the first 15 days after hospitalization and SARS-CoV-2-S1/M-reactive
412 CD69⁺-expressing IFN- γ -producing CD4⁺ and CD8⁺ T-cell counts in subjects who
413 recovered from severe COVID-19. Bars indicate median levels. *P* values are shown.

414 **Supplementary Figure 1.** Enumeration of SARS-CoV-2-S1/M-reactive CD69⁺-
415 expressing IFN- γ -producing CD4⁺ and CD8⁺ T cells by flow cytometry for intracellular
416 staining in COVID-19 patients. (a) Lymphocyte gating; (b) CD3⁺ gating; CD8⁺ gating;
417 (d) CD3⁺/CD69⁺/IFN- γ CD8⁺/Isotype control; (e-f) CD3⁺/CD69⁺/IFN- γ CD8⁺ positive
418 individual; (g-h) CD3⁺/CD69⁺/IFN- γ CD8⁺ negative individual. Dot-plot figures were
419 built with FlowJo software (BD Biosciences).

420

421

422

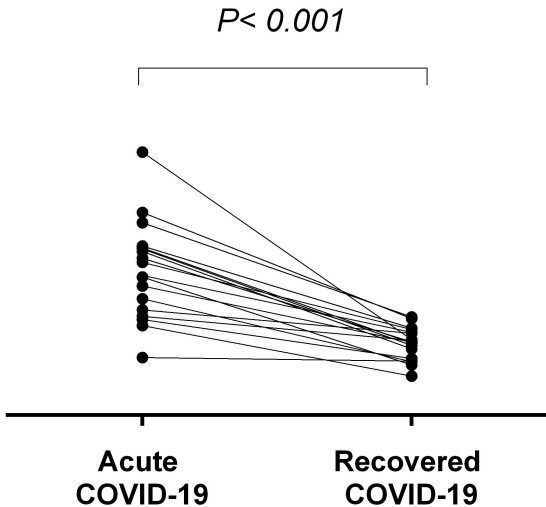
SARS-CoV-2 RBD IgG
(AU/ml)

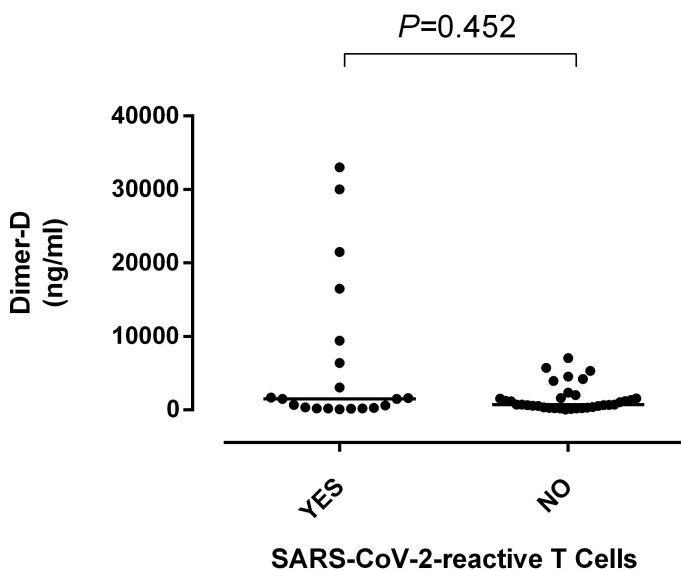
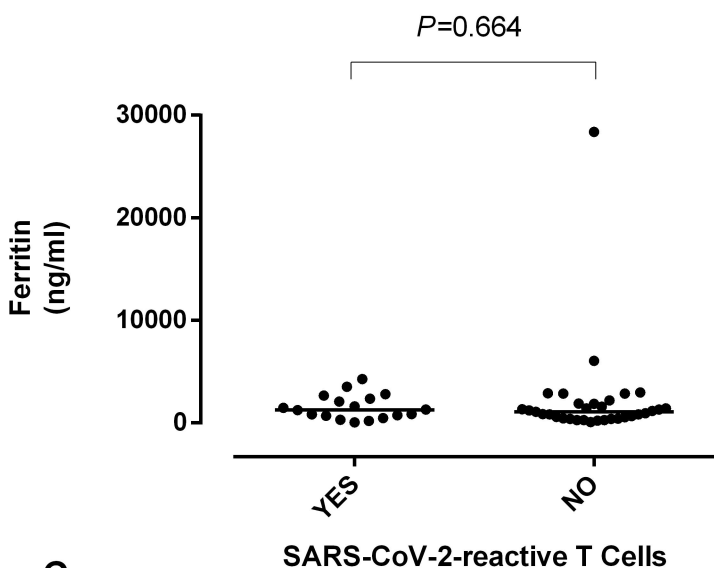
15
10
5
0

$P < 0.001$

Acute
COVID-19

Recovered
COVID-19



A**B****C**