

1 **Brain activity is contingent on neuropsychological function in an fMRI**
2 **study of Verbal Working Memory in Amyotrophic Lateral Sclerosis**

3 Xenia Kobeleva ^{1,2}, Judith Machts ³, Maria Veit ^{4,5}, Stefan Vielhaber ⁴, Susanne Petri ^{2*}, Mircea
4 Ariel Schoenfeld ^{4,6,7*}

5 *equally contributed

6

7 **Affiliations**

8 1 Department of Neurology, University Hospital of Bonn, Germany

9 2 Department of Neurology and Clinical Neurophysiology, Hannover Medical School,
10 Hannover, Germany

11 3 Institute for Cognitive Neurology and Dementia Research (IKND), Otto-von-Guericke
12 University, Magdeburg; Germany

13 4 Department of Neurology, Otto-von-Guericke University, Magdeburg, Germany

14 5 Department of Psychiatry, Social Psychiatry and Psychotherapy, Hannover Medical
15 School, Hannover, Germany

16 6 Kliniken Schmieder, Heidelberg, Germany

17 7 Dept. of behavioral neurology, Leibniz Institute for Neurobiology, Magdeburg

18

19 **Corresponding author:** Dr. Xenia Kobeleva, Department of Neurology, University of Bonn,
20 Venusberg-Campus 1, 53127 Bonn, Germany

21 **Key words:**

22 Amyotrophic lateral sclerosis, neuroimaging, working memory, neuropsychology, fMRI

23

24 **Abstract**

25 Amyotrophic lateral sclerosis (ALS) is a devastating neurodegenerative disease that causes
26 progressive degeneration of neurons in motor and non-motor regions, affecting multiple
27 cognitive domains. To contribute to the growing research field that employs structural and
28 functional neuroimaging to investigate the effect of ALS on different working memory
29 components, we conducted a functional magnetic resonance imaging (fMRI) study exploring
30 the localization and intensity of alterations in neural activity. Being the first study to specifically
31 address verbal working memory via fMRI in the context of ALS, we employed the verbal n-
32 back task with 0-back and 2-back conditions. Despite ALS patients showing unimpaired
33 accuracies ($p = 0.724$) and reaction times ($p = 0.0785$), there was significantly increased brain
34 activity of frontotemporal and parietal regions in the 2-back minus 0-back contrast in patients
35 compared to controls using nonparametric statistics with 5000 permutations and a T-threshold
36 of 2.5. This increased brain activity during working memory performance was largely
37 associated with better neuropsychological function within the ALS group, suggesting a
38 compensatory effect. This study therefore adds to the current knowledge on neural correlates
39 of working memory in ALS and contributes to a more nuanced understanding of hyperactivity
40 during cognitive processes in fMRI studies of ALS.

41

42 Introduction

43 Amyotrophic lateral sclerosis (ALS) is characterized by progressive impairment of motor and
44 non-motor brain regions. Reflecting the increasing scientific attention on non-motor effects of
45 ALS ¹⁻⁷, current epidemiological findings indicate that up to 55 % of ALS patients exhibit
46 cognitive deficits, including up to 20% of patients with characteristics of frontotemporal
47 dementia ⁸⁻¹². These deficits mostly manifest in impaired verbal fluency and executive
48 dysfunction ¹³, but also in other cognitive domains, such as language, social cognition, and
49 different components of memory ^{14,15}. Given that cognitive and behavioral deficits are
50 associated with poor survival in ALS ^{16,17}, better understanding of these deficits is necessary
51 for development of therapeutic strategies.

52
53 One important component of memory, that has been considered in ALS research, is working
54 memory. It is the ability to temporarily store information during cognitive processing ¹⁸. If
55 impaired, it causes general higher-order cognition to deteriorate. Based on Baddeley & Hitch's
56 seminal paper from 1974 ¹⁹⁻²¹, the current dominant model of working memory comprises four
57 principal components: Two unimodal storage systems (i.e., the phonological loop for verbal
58 and numerical information and the visuospatial sketchpad for visual information), the episodic
59 buffer (storing multimodal information in an episodic representation), and the central executive
60 (which controls these storage systems and manipulates information) ²².

61
62 Prior research has assessed the impact of ALS on working memory using behavioral and
63 functional imaging measures during the execution of working memory tasks. Most research
64 focused on the patients' working memory capacity. Such studies utilized tasks that either
65 address the phonological loop or the visuospatial sketchpad, with the majority of studies
66 showing interest in the former. Specifically, studies addressing the phonological loop mostly
67 employed variations of the digit span task as measures of working memory capacity, which
68 was mostly found to be unimpaired in ALS ^{13,14,23-25}. Research on the visuospatial sketchpad
69 employed visuospatial sequence tasks and more complex tasks (such as the visual 2-back
70 task) and yielded mostly comparable or marginally weaker behavioral performance results for
71 ALS patients relative to controls ²⁵⁻²⁷.

72
73 In contrast to comparisons of neuropsychological performance, studies have placed much less
74 attention on brain activity alterations in ALS patients. In fact, employing event-related potentials
75 or functional magnetic resonance imaging (fMRI) during working memory task execution have
76 revealed localized abnormal frontoparietal brain activity patterns in ALS patients. This
77 suggests that the behavioral parity to control groups in ALS patients is accompanied by
78 compensatory or potentially disease-related brain network changes.

79

80 For example, Hammer et al.²⁵ applied event-related potentials and found parietal differences
81 between the storage of figural and spatial information during a visual 2-back task in ALS
82 patients, which were not present in healthy controls. Relatedly, Vellage et al.²⁷ used a
83 visuospatial working memory task with different levels of memory load and distractors,
84 localizing neural activity related to working memory capacity via fMRI. They found significantly
85 different levels of frontal brain activity in ALS patients compared to controls. Specifically, they
86 reported lower frontal brain activity during storage of working memory content (arguing that
87 this can be attributed to a breakdown of storage capacity), while higher frontal brain activity
88 was observed during filtering of relevant stimuli (arguing that this can be attributed to
89 compensatory hyperactivity).

90

91 In prior literature working memory in ALS, significantly more research has addressed the
92 phonological loop than the visuospatial sketchpad^{13,14,23–25}. Given this proportion, it is
93 remarkable that none of the studies addressing the phonological loop have employed
94 neuroimaging methods or complex tasks with active manipulation of working memory content.
95 Such complex tasks could feature a higher sensitivity to working memory dysfunction in ALS.
96 Furthermore, using fMRI could substantiate possible working memory dysfunction and
97 compensatory processes in ALS by describing ALS-associated patterns of neural activity
98 involved in verbal working memory function.

99

100 In this study, we therefore sought to extend evidence on ALS-induced verbal working memory
101 dysfunction. Specifically, by using fMRI, we investigated the underlying brain activity in ALS
102 patients (and controls) during execution of the well-established and robust verbal n-back task
103²⁸, which addresses both the central executive as well as the phonological loop. By doing so,
104 we acknowledge that such a complex task requires more active manipulation of working
105 memory content and could be more sensitive in detecting working memory dysfunction in ALS
106²⁵. Building on prior research, we hypothesized comparable or subtly diminished behavioral
107 accuracy associated with ALS. We complement previous studies that focused on visuospatial
108 working memory; in consequence, we aim at supplying information on whether potentially
109 impaired working memory performance and accompanying brain hyperactivity levels occur in
110 both the phonological loop and the visuospatial sketchpad in patients with ALS. We expected
111 ALS patients to show an increased activity of frontoparietal brain areas associated with
112 reduced executive function. We especially aimed to address the potential interaction of
113 neuropsychological function that is known to be impaired in ALS patients (executive function,
114 verbal fluency and language function) with working memory performance and observed brain
115 activity.

116

117 **Materials and Methods**

118 **Subjects**

119 28 ALS patients were recruited from the ALS clinics of Hannover Medical School and University
120 of Magdeburg. They had been diagnosed by a board-certified neurologist according to the
121 revised El Escorial criteria (i.e., diagnosis of possible, probable, laboratory supported-probable
122 or definite ALS ²⁹) and did not show clinical signs of other current neuropsychiatric disorders
123 — especially no dementia according to the ALS-FTD criteria ³⁰. They were all able to press a
124 button with their right hand and lie horizontally in the MRI scanner. 21 controls matched for
125 age, gender, and education and without a history of neuropsychiatric disorder participated in
126 the study. Subjects were excluded if their task performance during a practice run was
127 insufficient (< 2/3 of correct responses) or if they exhibited intolerable head movement (see
128 description of preprocessing below). This led to the exclusion of four patients due to excessive
129 motion and two patients due to insufficient task performance, resulting in 22 ALS patients
130 included in the analysis.

131
132 Functional impairment was classified by the revised version of the ALS functional rating scale
133 (ALSFRS-R ³¹), and the severity of motor symptoms was assessed by a standard neurological
134 examination. The neuropsychological evaluation consisted of the cognitive part of the
135 Edinburgh Cognitive and Behavioural ALS Screen (ECAS, German version) ³². In addition to
136 analyzing the group means, the ECAS was used to categorize ALS patients into subgroups
137 according to the revised Strong criteria ³³: ALS-ci (cognitively impaired in at least one ALS-
138 specific cognitive domain) and ALS-ni (no cognitive impairment) according to the ECAS cut-
139 off values ³⁴.

140
141 The study was approved by the ethics' committee of the medical faculty of the University of
142 Magdeburg and all subjects provided informed and written consent.

143

144 **Experimental Design**

145 Working memory function was assessed using a letter version of the 2-back task ³⁵. This task
146 was part of a bigger (yet unpublished) fMRI study. The task was presented with the NBS
147 Presentation software. Before entering the MRI scanner, all participants performed a short
148 practice trial.

149 During the experiment, each condition started with a 5-second "instruction" condition. In the 0-
150 back condition "A", 15 capital letters were presented in a random order. The participants were
151 asked to press a button with their right index finger whenever the letter "N" appeared on the
152 screen (in four out of the 15 trials). During the 2-back condition "B", participants were required

153 to press the button if the presented letter was the same as the one that appeared two items
154 before (in four out of 15 trials in a pseudorandom order to avoid successive occurrence of
155 target trials). The 0- and 2-back task conditions were presented for 400ms, followed by an
156 inter-stimulus-interval of 1.6 seconds, resulting in four blocks of 30seconds, divided by 15
157 seconds of fixation and five seconds of instruction. The order of the two conditions was
158 ABBABAAB for all subjects.

159

160 **Analysis of Neuropsychological and Behavioral Data**

161 Reaction times and error rates recorded for each participant. Behavioral and
162 neuropsychological data were compared between groups using (M)ANCOVAs via SPSS
163 Statistics and JAMOVI ³⁶. We calculated the association between accuracy of the 2-condition
164 of the n-back task and disease duration and ALSFRS-R in ALS using Spearman correlations.
165 Furthermore, we evaluated the effect of group membership (patients vs controls) on accuracy
166 and reaction times using a repeated-measures ANCOVA with covariates ECAS sub-scores for
167 executive function, verbal fluency, and language function, and included age and gender as
168 covariates of no interest.

169

170 **MRI Data Acquisition**

171 Subjects were scanned in a 3T whole body MR scanner (Siemens Magnetom Verio syngo MR
172 B19, Erlangen, Germany) using a 32-channel head coil receiver. A gradient echo single shot
173 EPI sequence (with 42 slices, TE= 30ms, TR= 2500ms, flip-angle 80°, in-plane resolution
174 64x64mm, no gap, FoV 224x224mm², voxel size 2x2x3mm³) was used to acquire the functional
175 images in an odd-even interleaved sequence (166 volumes). A T1-weighted image was
176 acquired as well (MP-RAGE, 96 sagittal slices, thickness= 2mm, FoV 256 × 256mm, no gap,
177 voxel size 1×1×2mm³, TR= 1660ms, TE= 5.05ms, TI= 1100ms).

178

179 **MRI Data Preprocessing**

180 The fMRI data was preprocessed using FEAT Version 6.00, part of FSL (FMRIB's Software
181 Library) with a standard pipeline with motion correction ³⁷; non-brain removal ³⁸; spatial
182 smoothing (8mm FWHM); grand-mean intensity normalization; high-pass temporal filtering
183 (sigma= 30.0s). ICA-based exploratory data analysis was carried out with MELODIC ³⁹ to
184 investigate the possible presence of unexpected artefacts or activity. Outliers were detected
185 by observing the motion parameters from the realignment step (threshold of 0.5 mm/TR or 1.9
186 standard deviations away from mean). If more than 1/3 of a run's data points were outliers, the
187 subject was excluded from the analysis.

188

189 **First-Level Analysis**

190 All three conditions (i.e., the instruction, the 0-back and 2-back condition) were entered into a
191 general linear model using a boxcar function convolved with a standard hemodynamic
192 response function. For the first-level analysis, the contrast for working memory function was
193 calculated for the 2-back minus 0-back condition.

194

195 **Second-Level Analysis**

196 The resulting 2-back minus 0-back contrast was submitted to group statistics and regression
197 analyses with covariates of interest using permutation-based nonparametric statistics (FSL
198 Randomise; <http://fsl.fmrib.ox.ac.uk/fsl/fslwiki/Randomise>). The analyses featured 5,000
199 permutations; values above a voxel-wise T-value of 2.5 (uncorrected) were considered
200 significant. Age and gender were demeaned and included as covariates of no interest. Given
201 the comparable means and low variance of years of education in both groups, education was
202 not added as an additional covariate. Group means and group contrasts were calculated to
203 compare the ALS group with controls. The association of the covariates with brain activity was
204 examined using a regression analysis with 5,000 permutations in FSL Randomise using a
205 voxel-wise threshold of a T-value > 2.5 (uncorrected). In the ALS group, the association of
206 ALSFRS-R and disease duration with brain activity was examined. The association of the
207 covariates ECAS executive, ECAS language and ECAS verbal fluency was compared between
208 ALS patients and controls. The FSL Randomise output shows the regions that contain
209 significant group differences in slopes between the dependent and independent variables, but
210 it does not display the direction of the slopes. To disentangle the direction of the group
211 differences (i.e., whether the differences were caused by a positive relation of higher
212 neuropsychological performance on brain activity in ALS patients or by a negative relation in
213 controls), the regression analysis' group means were calculated as well, and were
214 subsequently overlaid with the group contrasts. Given the small sample size (due to the rarity
215 of the disease and challenges of ALS patients to participate in fMRI studies), we were not able
216 to apply more conservative statistical thresholds such as FDR or FWE corrections. The
217 resulting statistical maps were visualized with Nilearn⁴⁰.

218 **Results**

219 **Subject Characteristics**

220 Both ALS patients and controls were comparable in age, gender, and years of education (all p
221 > 0.05, see Table 1). 10 patients were diagnosed with possible ALS, five with probable ALS,
222 and seven with definitive ALS²⁹. Furthermore, 10 ALS patients fulfilled the criteria for ALS-ci,
223 according to the modified Strong criteria³³. Patients' characteristics can be found in Table 1.

224

225 **Neuropsychological Testing**

226 Means and standard deviations of the neuropsychological assessments are reported in Table
227 2. Controls had normal ECAS subscores. The MANCOVA showed a significant effect of group
228 ($F = 2.625$, $p = 0.041$) and age ($F = 3.311$, $p = 0.015$) but not of gender ($F = 1.480$, $p = 0.222$).
229 Post-hoc ANOVAS showed that the two groups were not different — neither in the overall
230 ECAS score, nor in the subdomains memory function, visuospatial functions, verbal fluency,
231 or executive function (each $p > 0.05$). However, at first glance patients performed significantly
232 worse than controls in the language domain ($F = 5.938$, $p = 0.019$). After a Bonferroni-
233 correction for multiple comparisons, neither of these values remained significant. Despite
234 comparable mean group values in ALS and controls, there were 10 ALS-ci and 12 ALS-ni
235 patients within the ALS group, according to the modified Strong criteria³³. Due to small group
236 sizes of the ALS-ci and ALS-ni group, we did not use these subgroups for further analyses, but
237 instead resorted to regression analyses of the ECAS subdomains (executive function, verbal
238 fluency, and language function) on behavioral performance and brain activity.

239

240 **Behavioral Performance**

241 Accuracies and reaction times of the n-back task are reported in Supplementary Table S1. The
242 repeated-measures ANCOVA of accuracies revealed significant effects of age ($F = 8.013$, $p =$
243 0.007) and condition ($F = 4.701$, $p = 0.036$), but no significant effects of gender ($F = 1.162$, $p =$
244 0.288) or group ($F = 0.127$, $p = 0.724$). With respect to reaction times, there was no significant
245 effect of condition ($F = 0.005$, $p = 0.942$), age ($F = 0.667$, $p = 0.419$) or group ($F = 3.264$, $p =$
246 0.0785) but a significant effect of gender ($F = 6.554$, $p = 0.014$).

247

248 Neuropsychological function (i.e., executive function, verbal fluency, and language function)
249 was found to have no significant effect on the accuracy (all F-values below 0.548 and p-values
250 above 0.464). Regarding reaction times, there was a trend towards a positive relation between
251 executive function and the reaction times ($F = 3.203$, $p = 0.083$, other F-values below 0.013
252 and p-values above 0.941). In the ALS group, there was no significant correlation between
253 ALSFRS-R scores or disease duration, accuracy rates or reaction times (p-values above
254 0.198).

255

256 **fMRI Results**

257 To assess the neural correlates of working memory execution in ALS and its alterations in
258 comparisons to controls, we calculated group means and group differences of the 2-back
259 minus 0-back contrast (see Figure 1). Group means of ALS patients and controls exhibited
260 comparable frontoparietal and temporal activity for the 2-back minus 0-back contrast (peak
261 coordinates of the activation clusters are detailed in Table S2). Between-group activity
262 differences were observed for the 2-back minus 0-back contrast in frontotemporal and parietal

263 regions with ALS patients exhibiting higher activity than controls. Besides increased activity,
264 regions with decreased activity were found in the ALS group within the inferior frontal cortex,
265 frontal pole, cerebellum and caudate nucleus relative to controls for the 2-back minus 0-back
266 contrast.

267 We were then interested in associating separate contribution of the components of the working
268 memory (phonological loop, central executive) to the observed differences in fMRI activity. To
269 do so, we performed a regression analysis with the brain activity as a dependent variable and
270 ECAS subdomains (i.e., executive function, verbal fluency, and language function) as
271 independent variables. Figure 2 visualizes the group differences as they were identified by the
272 regression analyses of the ECAS subdomains with brain activity in the 2-back minus 0-back
273 contrast. As the group differences do not give any information on whether the differences were
274 caused by a positive influence of higher ECAS scores on brain activity in ALS patients or by a
275 negative influence of higher ECAS score on brain activity in controls, we performed the
276 regression analyses for each group and neuropsychological subdomain separately and
277 overlaid the activity maps onto the group contrasts (see supplementary Figure S1).

278 As can be seen in Figure S1, group differences were mostly caused by negative associations
279 of higher neuropsychological function and brain activity in controls. In ALS patients, this
280 association was either absent or even reversed (i.e., a positive association of higher
281 neuropsychological function and brain activity). Regarding executive function, in controls there
282 was a negative association between higher executive function and lower brain activity of
283 frontoparietal and cerebellar regions. In ALS patients, we found a positive association with
284 higher executive function and cerebellar activity (which only partly overlapped with the areas
285 where the group differences were found).

286 Regarding verbal fluency, we found a negative association between verbal fluency
287 performance and brain activity in frontotemporal regions in controls, while there was a positive
288 association between verbal fluency performance and brain activity in frontotemporoparietal
289 areas in ALS patients, with both effects contributing to the group differences.

290 Regarding language function, there was a negative association between language function
291 and lower brain activity in temporal areas in controls and a positive association between
292 language function and brain activity in the superior frontal cortex. In ALS patients, there was a
293 negative association between language function and brain activity in superior frontal areas and
294 a positive association between language function and brain activity in temporal areas.

295 With respect to an association of clinical variables with brain activity in ALS, regression
296 analyses revealed increased frontal and cerebellar activity as a function of higher ALSFRS-R
297 values (Figure 3) and increased activity within the left temporal cortex as a function of longer
298 disease duration.

299

300 Discussion

301 In this study, we investigated the neural correlates of verbal working memory deficits in ALS
302 patients. Controls and patients performed a 2-back task, and fMRI activity was associated with
303 neuropsychological function. Patients and controls achieved overall similar behavioral
304 measures such as accuracies and reaction times in the task. Functional imaging revealed,
305 besides a widely comparable frontoparietal brain activity in both groups, a significantly
306 increased brain activity of several frontotemporal and parietal regions in the 2-back minus 0-
307 back contrast in ALS patients. Moreover, frontoparietal brain activity was influenced by
308 neuropsychological performance in a divergent manner in controls and patients. In general,
309 there was a negative association of superior neuropsychological function and brain activity in
310 controls, but a positive association of higher neuropsychological function with brain activity in
311 ALS patients. This indicates a compensatory effect in ALS: While higher executive function
312 was largely associated with increased brain activity of frontoparietal and cerebellar regions,
313 better verbal fluency was associated with increased activity of frontotemporal areas, and higher
314 language function was associated with increased activity of temporal areas (exclusively in ALS
315 patients). In addition, we found that disease severity was positively related to decreased
316 activity within the cerebellum and left inferior frontal cortex in ALS patients, possibly indicating
317 a breakdown of these brain resources in more advanced stages of ALS.

318
319 In accordance with previous literature ^{11,13,25}, about 45% of ALS patients participating in this
320 study were classified as ALS-ci according to the modified Strong criteria ³³, despite similar
321 neuropsychological test scores at the group level (except for diminished language function in
322 the ALS group). Regarding behavioral performance, ALS patients achieved similar task
323 accuracies and reaction times as controls. When investigating the influence of
324 neuropsychological performance (such as executive function, verbal fluency, or language
325 function) on behavioral performance, there was no association between neuropsychological
326 function and task accuracy or reaction times. This argues in favor of an overall good behavioral
327 performance of ALS patients in working memory tasks, even for verbal stimuli.

328
329 In contrast to the overall intact behavioral performance of the ALS patients, we observed some
330 brain regions with enhanced brain activity in ALS patients, compared to controls. Both groups
331 engaged mostly frontoparietal regions, which is in line with previous fMRI studies of working
332 memory ⁴¹⁻⁴³. Yet, ALS patients exhibited higher activity of frontoparietal and temporal regions
333 in the 2-back condition. To better explain these findings, we assessed interactions between
334 group and neuropsychological function as well as effects of disease severity and disease
335 duration on brain activity. This approach identified several interesting insights: Overall, controls
336 showed negative associations between higher executive function and frontoparietal activity,

337 between superior verbal fluency performance and frontotemporal brain activity, and between
338 language function and temporal brain activity. There was only one positive association
339 between higher language function and brain activity within superior frontal cortex in controls.
340 In ALS patients, these modulations of frontoparietal and temporal activity by
341 neuropsychological function were reversed, either featuring a positive association with better
342 neuropsychological function with brain activity, or absent association of neuropsychological
343 function with brain activity. While in healthy subjects higher cognitive performance is usually
344 related to less brain activity (as a sign of decreased effort ^{44,45}), the relationship between
345 cognitive performance and brain activity in ALS was found to be the opposite. This may
346 suggest that given sufficient cognitive resources, enhanced brain activity, might compensate
347 for disease-related effects in those ALS patients who are able to maintain a sufficient cognitive
348 performance. We observed less brain activity in ALS patients with lower cognitive function,
349 possibly indicating a breakdown of resources, which might probably cause further behavioral
350 deficits in even more demanding tasks. Similar to what has been observed in patients with Mild
351 Cognitive Impairment ⁴⁶, we believe that changes of neural activity during cognitive processes
352 should be regarded as dysfunctional even in absence of a behavioral deficit. This is because
353 increased neural activity leads to enhanced energy expenditure ⁴⁷. In our view, increased
354 neural activity during cognitive processes is especially relevant for patients with ALS, as
355 neurons of ALS patients might be especially vulnerable to energetic stress ⁴⁸.

356
357 Our findings therefore suggest that whether an ALS patient exhibits hyper- or hypoactivity
358 during cognitive processes is contingent on the cognitive resources available to that individual.
359 Successful compensation in ALS patients might be associated with hyperactivity, and a
360 breakdown of cognitive resources might be mirrored by hypoactivity. This finding extends
361 current knowledge on neural correlates of verbal working memory in ALS. It also contributes
362 to a more nuanced understanding to the common finding of hyperactivity during cognitive
363 processes in fMRI studies of ALS ^{6,49-51}. Several studies of patients with neurodegenerative
364 diseases showed an inverted U-shaped relationship of hyperactivity and neural decline during
365 cognitive tasks ^{52,53}. Our observation of fMRI hyperactivity in patients with good
366 neuropsychological performance and decreased activity in patients with decreased
367 neuropsychological performance supports this body of literature on compensation.

368
369 As these associations between neuropsychological performance and brain activity were found
370 for the 2-back minus 0-back contrast, one can suppose that these alterations are more than
371 baseline disease-accompanying processes and contain information about functional changes
372 of cognitive processes in ALS patients. As most differences were associated executive function
373 and verbal fluency, it can be assumed that observed patterns of brain activity during working

374 memory execution are mostly related to early impairments in executive function and probably
375 to a lesser extent to language function. In consequence we suggest that the central executive
376 is primarily affected with a relative preserving of the phonological loop function, which is well
377 in line with previous studies^{23,54}. The characteristics of the impairment of the central executive
378 are in accordance with several reports of reduced executive function in ALS patients^{54–56}.
379 These results are consistent with a previous study on visual working memory describing
380 increased frontal activity during filtering of relevant information²⁷. Besides replicating findings
381 from this specific study, the current results contribute to the research of cognitive dysfunction
382 in ALS in general by providing a better understanding of executive dysfunction in the context
383 of working memory in this disease.

384
385 Besides associations of neuropsychological performance and brain activity, we found a
386 negative association of disease severity, i.e., a lower ALSFRS-R, and brain activity within
387 inferior frontal and cerebellar regions. This supports the notion that ALS patients, who are more
388 severely affected by the disease, have less brain resources available for cognitive tasks.
389 Longer disease duration was associated with increased brain activity only in a small temporal
390 area, possibly due to a selection bias of ALS patients with a more benign disease course, who
391 were able to participate in our fMRI study.

392
393 Interestingly, those brain areas affected and either not showing a decrease in association with
394 higher cognitive function at all (as in controls) or even showing an increase of activity, are
395 consistent with areas that were described in a recent postmortem neuropathological study.
396 This study associated TDP-43 accumulation with neuropsychological function and showed
397 associations of executive function with frontal accumulations and verbal fluency with
398 frontotemporal accumulations⁵⁷. Therefore, functional neuroimaging of cognitive function in
399 ALS might show areas of neural dysfunction reproducing known patterns of TDP-43
400 accumulations. In particular, our findings and their association with disease severity are in line
401 with several previous neuroimaging studies that demonstrated a progressive disease
402 spreading from motor to non-motor areas^{58,59}. Our study adds in-vivo neuroimaging evidence
403 to the proposed staging scheme of ALS-associated neuropathology. Future studies dealing
404 with task-related and resting-state fMRI should not only relate the observed neural changes to
405 neuropsychological scores, but also specifically evaluate the observed patterns as putative
406 biomarkers of disease progression.

407
408 Like most studies on rare diseases such as ALS, sample characteristics (i.e., small sample
409 size and clinical phenotype heterogeneity) were determined by restricted patient availability;
410 as such, the reported findings above should be interpreted with typical caution. Moreover,

411 impaired respiratory and motor function have limited the number of patients who were able to
412 participate in the fMRI task, especially in more advanced stages of the disease. To increase
413 statistical power of fMRI studies in ALS, results of our and other research groups' studies could
414 be used for neuroimaging meta-analyses⁶⁰. To test performance in more severely impaired
415 patients with ALS, future studies could employ longitudinal measures of cognitive function or
416 evaluate options, e.g. by assessing of cognition using eye-tracking devices and applying
417 simultaneous EEG to measure neural correlates^{6,61–63}. Regarding the contribution of cognitive
418 impairment on working memory, larger multi-site studies could enable the analysis of
419 subgroups (i.e., ALS-ci versus ALS-ni) to understand interindividual differences in cognition
420 and behavior⁶⁴. Furthermore, comprehensive neuropsychological batteries for assessment of
421 cognition might be more sensitive to detect subtle behavioral and neuropsychological
422 impairment in ALS patients^{33,65}.

423 In summary, our study found comparable behavioral performance but increased frontoparietal
424 and temporal activity during a verbal working memory task in patients with ALS. Furthermore,
425 increased activity of working memory-related areas in association with higher
426 neuropsychological performance in ALS patients most likely reflect compensatory effects.

427

428 **Acknowledgements**

429 JM is funded by the federal state of Saxony-Anhalt and the European Regional Development
430 Fund (ERDF) in the Center for Behavioral Brain Sciences (CBBS, ZS/2016/04/78113). SP is
431 funded by the German Neuromuscular Society and Federal Ministry of Education and
432 Research (BMBF). We thank Christian Stoppel and Christian Merkel for technical assistance
433 with the experiment and analysis pipeline.

434 **Conflicts of interest**

435 SP has received honorariums by Desitin Pharma, Cytokinetics, Inc., Biogen and Novartis (see
436 ICMJE uniform disclosure form). All the other authors declare no conflicts of interest.

437

438 **Data availability**

439 The data that support the findings of this study are available on request from the corresponding
440 author. The data are not publicly available due to privacy or ethical restrictions. The data in
441 this paper contain identifying patient and healthy volunteer information, which is unsuitable for
442 public deposition. The participants of this study also did not consent to the sharing of their data.

443

444 **References**

- 445 1. Neumann, M. *et al.* Ubiquitinated TDP-43 in frontotemporal lobar degeneration and
446 amyotrophic lateral sclerosis. *Science* **314**, 130–133 (2006).
- 447 2. DeJesus-Hernandez, M. *et al.* Expanded GGGGCC hexanucleotide repeat in noncoding
448 region of C9ORF72 causes chromosome 9p-linked FTD and ALS. *Neuron* **72**, 245–256
449 (2011).
- 450 3. Renton, A. E. *et al.* A hexanucleotide repeat expansion in C9ORF72 is the cause of
451 chromosome 9p21-linked ALS-FTD. *Neuron* **72**, 257–268 (2011).
- 452 4. Abrahams, S. *et al.* Frontotemporal white matter changes in amyotrophic lateral
453 sclerosis. *J. Neurol.* **252**, 321–331 (2005).
- 454 5. Mohammadi, B. *et al.* Amyotrophic lateral sclerosis affects cortical and subcortical activity
455 underlying motor inhibition and action monitoring. *Hum. Brain Mapp.* **36**, 2878–2889
456 (2015).
- 457 6. Stoppel, C. M. *et al.* Structural and functional hallmarks of amyotrophic lateral sclerosis
458 progression in motor- and memory-related brain regions. *NeuroImage Clin.* **5**, 277–290
459 (2014).
- 460 7. Brettschneider, J. *et al.* Stages of pTDP-43 pathology in amyotrophic lateral sclerosis.
461 *Ann. Neurol.* **74**, 20–38 (2013).
- 462 8. Ringholz, G. M. *et al.* Prevalence and patterns of cognitive impairment in sporadic ALS.
463 *Neurology* **65**, 586–590 (2005).
- 464 9. Montuschi, A. *et al.* Cognitive correlates in amyotrophic lateral sclerosis: a population-
465 based study in Italy. *J. Neurol. Neurosurg. Psychiatry* **86**, 168–173 (2015).
- 466 10. Rippon, G. A. *et al.* An observational study of cognitive impairment in amyotrophic lateral
467 sclerosis. *Arch. Neurol.* **63**, 345–52 (2006).
- 468 11. Phukan, J. *et al.* The syndrome of cognitive impairment in amyotrophic lateral sclerosis: a
469 population-based study. *J. Neurol. Neurosurg. Psychiatry* **83**, 102–108 (2012).
- 470 12. Chiò, A. *et al.* Cognitive impairment across ALS clinical stages in a population-based
471 cohort. *Neurology* **93**, e984–e994 (2019).

- 472 13. Beeldman, E. *et al.* The cognitive profile of ALS: a systematic review and meta-analysis
473 update. *J. Neurol. Neurosurg. Psychiatry* **87**, 611–9 (2016).
- 474 14. Machts, J. *et al.* Memory deficits in amyotrophic lateral sclerosis are not exclusively
475 caused by executive dysfunction: a comparative neuropsychological study of amnesic
476 mild cognitive impairment. *BMC Neurosci.* **15**, 83 (2014).
- 477 15. Girardi, A., Macpherson, S. E. & Abrahams, S. Deficits in emotional and social cognition
478 in amyotrophic lateral sclerosis. *Neuropsychology* **25**, 53–65 (2011).
- 479 16. Elamin, M. *et al.* Executive dysfunction is a negative prognostic indicator in patients with
480 ALS without dementia. *Neurology* **76**, 1263–1269 (2011).
- 481 17. Nguyen, C., Caga, J., Mahoney, C. J., Kiernan, M. C. & Huynh, W. Behavioural changes
482 predict poorer survival in amyotrophic lateral sclerosis. *Brain Cogn.* **150**, 105710 (2021).
- 483 18. Baddeley, A. D. Working memory. *Philos. Trans. R. Soc. B Biol. Sci.* **302**, 311–324
484 (1983).
- 485 19. Baddeley, A. D. & Hitch, G. Working Memory. *Psychol. Learn. Motiv.* **8**, 47–89 (1974).
- 486 20. Baddeley, A. The episodic buffer: a new component of working memory? *Trends Cogn.*
487 *Sci.* **4**, 417–423 (2000).
- 488 21. Repovš, G. & Baddeley, A. The multi-component model of working memory: Explorations
489 in experimental cognitive psychology. *Neuroscience* **139**, 5–21 (2006).
- 490 22. Repovš, G. & Baddeley, A. The multi-component model of working memory: Explorations
491 in experimental cognitive psychology. *Neuroscience* **139**, 5–21 (2006).
- 492 23. Volpato, C. *et al.* Working memory in amyotrophic lateral sclerosis: auditory event-related
493 potentials and neuropsychological evidence. *J. Clin. Neurophysiol. Off. Publ. Am.*
494 *Electroencephalogr. Soc.* **27**, 198–206 (2010).
- 495 24. Kasper, E. *et al.* No change in executive performance in ALS patients: A longitudinal
496 neuropsychological study. *Neurodegener. Dis.* **16**, 184–191 (2016).
- 497 25. Hammer, A., Vielhaber, S., Rodriguez-Fornells, A., Mohammadi, B. & Münte, T. F. A
498 neurophysiological analysis of working memory in amyotrophic lateral sclerosis. *Brain*
499 *Res.* **1421**, 90–99 (2011).

- 500 26. Zaehle, T. *et al.* Working Memory in ALS Patients: Preserved Performance but Marked
501 Changes in Underlying Neuronal Networks. *PLoS ONE* **8**, 1–10 (2013).
- 502 27. Vellage, A. K. *et al.* Working memory network changes in ALS: An fMRI study. *Front.*
503 *Neurosci.* **10**, 1–10 (2016).
- 504 28. Owen, A. M., McMillan, K. M., Laird, A. R. & Bullmore, E. N-back working memory
505 paradigm: A meta-analysis of normative functional neuroimaging studies. *Hum. Brain*
506 *Mapp.* **25**, 46–59 (2005).
- 507 29. Brooks, B. R., Miller, R. G., Swash, M., Munsat, T. L., & World Federation of Neurology
508 Research Group on Motor Neuron Diseases. El Escorial revisited: revised criteria for the
509 diagnosis of amyotrophic lateral sclerosis. *Amyotroph. Lateral Scler. Mot. Neuron Disord.*
510 *Off. Publ. World Fed. Neurol. Res. Group Mot. Neuron Dis.* **1**, 293–299 (2000).
- 511 30. Rascovsky, K. *et al.* Sensitivity of revised diagnostic criteria for the behavioural variant of
512 frontotemporal dementia. *Brain* vol. 134 2456–2477 (2011).
- 513 31. Cedarbaum, J. M. *et al.* The ALSFRS-R: A revised ALS functional rating scale that
514 incorporates assessments of respiratory function. *J. Neurol. Sci.* **169**, 13–21 (1999).
- 515 32. Abrahams, S., Newton, J., Niven, E., Foley, J. & Bak, T. H. Screening for cognition and
516 behaviour changes in ALS. *Amyotroph. Lateral Scler. Front. Degener.* **15**, 9–14 (2014).
- 517 33. Strong, M. J. *et al.* Amyotrophic lateral sclerosis - frontotemporal spectrum disorder
518 (ALS-FTSD): Revised diagnostic criteria. *Amyotroph. Lateral Scler. Front. Degener.* **18**,
519 153–174 (2017).
- 520 34. Lule, D. *et al.* The Edinburgh Cognitive and Behavioural Amyotrophic Lateral Sclerosis
521 Screen: a cross-sectional comparison of established screening tools in a German-Swiss
522 population. *Amyotroph. Lateral Scler. Front. Degener.* **16**, 16–23 (2015).
- 523 35. Braver, T. S. *et al.* A Parametric Study of Prefrontal Cortex Involvement in Human
524 Working Memory. *NeuroImage* **5**, 49–62 (1997).
- 525 36. The jamovi project. *jamovi (Version 1.2)* (2020).

- 526 37. Jenkinson, M., Bannister, P., Brady, M. & Smith, S. Improved optimization for the robust
527 and accurate linear registration and motion correction of brain images. *NeuroImage* **17**,
528 825–841 (2002).
- 529 38. Smith, S. M. Fast robust automated brain extraction. *Hum. Brain Mapp.* **17**, 143–155
530 (2002).
- 531 39. Beckmann, C. F. & Smith, S. M. Probabilistic independent component analysis for
532 functional magnetic resonance imaging. *IEEE Trans. Med. Imaging* **23**, 137–152 (2004).
- 533 40. Abraham, A. *et al.* Machine learning for neuroimaging with scikit-learn. *Front.*
534 *Neuroinformatics* **8**, (2014).
- 535 41. Rottschy, C. *et al.* Modelling neural correlates of working memory: A coordinate-based
536 meta-analysis. *Neuroimage* **60**, 830–846 (2012).
- 537 42. Emch, M., von Bastian, C. C. & Koch, K. Neural Correlates of Verbal Working Memory:
538 An fMRI Meta-Analysis. *Front. Hum. Neurosci.* **13**, (2019).
- 539 43. Charroud, C. *et al.* Working memory activation of neural networks in the elderly as a
540 function of information processing phase and task complexity. *Neurobiol. Learn. Mem.*
541 **125**, 211–223 (2015).
- 542 44. Demeter, E., Hernandez-Garcia, L., Sarter, M. & Lustig, C. Challenges to attention: A
543 continuous arterial spin labeling (ASL) study of the effects of distraction on sustained
544 attention. *NeuroImage* **54**, 1518–1529 (2011).
- 545 45. Engstrom, M., Landtblom, A.-M. & Karlsson, T. Brain and effort: brain activation and
546 effort-related working memory in healthy participants and patients with working memory
547 deficits. *Front. Hum. Neurosci.* **7**, (2013).
- 548 46. Jiménez-Balado, J. & Eich, T. S. GABAergic dysfunction, neural network hyperactivity
549 and memory impairments in human aging and Alzheimer’s disease. *Semin. Cell Dev.*
550 *Biol.* (2021) doi:10.1016/j.semcdb.2021.01.005.
- 551 47. Attwell, D. & Laughlin, S. B. An energy budget for signaling in the grey matter of the
552 brain. *J. Cereb. Blood Flow Metab. Off. J. Int. Soc. Cereb. Blood Flow Metab.* **21**, 1133–
553 1145 (2001).

- 554 48. Vandoorne, T., De Bock, K. & Van Den Bosch, L. Energy metabolism in ALS: an
555 underappreciated opportunity? *Acta Neuropathol. (Berl.)* **135**, 489–509 (2018).
- 556 49. Keller, J. *et al.* Functional reorganization during cognitive function tasks in patients with
557 amyotrophic lateral sclerosis. *Brain Imaging Behav.* (2017) doi:10.1007/s11682-017-
558 9738-3.
- 559 50. Schoenfeld, M. A. *et al.* Functional motor compensation in amyotrophic lateral sclerosis.
560 *J. Neurol.* **252**, 944–952 (2005).
- 561 51. Witiuk, K. *et al.* Cognitive Deterioration and Functional Compensation in ALS Measured
562 with fMRI Using an Inhibitory Task. *J. Neurosci.* **34**, 14260–14271 (2014).
- 563 52. Scheller, E., Minkova, L., Leitner, M. & Klöppel, S. Attempted and Successful
564 Compensation in Preclinical and Early Manifest Neurodegeneration – A Review of Task
565 fMRI Studies. *Front. Psychiatry* **5**, (2014).
- 566 53. Cabeza, R., Dennis, N., Stuss, D. T. & Knight, R. T. Principles of frontal lobe function. *Ed*
567 **2**, 628–652 (2012).
- 568 54. Abrahams, S. *et al.* Verbal fluency and executive dysfunction in amyotrophic lateral
569 sclerosis (ALS). *Neuropsychologia* **38**, 734–747 (2000).
- 570 55. Evdokimidis, I. *et al.* Frontal lobe dysfunction in amyotrophic lateral sclerosis. *J. Neurol.*
571 *Sci.* **195**, 25–33 (2002).
- 572 56. Meier, S. L., Charleston, A. J. & Tippett, L. J. Cognitive and behavioural deficits
573 associated with the orbitomedial prefrontal cortex in amyotrophic lateral sclerosis. *Brain*
574 *J. Neurol.* **133**, 3444–3457 (2010).
- 575 57. Gregory, J. M. *et al.* Executive, language and fluency dysfunction are markers of
576 localised TDP-43 cerebral pathology in non-demented ALS. *J. Neurol. Neurosurg.*
577 *Psychiatry* **91**, 149–157 (2020).
- 578 58. Trojsi, F. *et al.* Microstructural Changes across Different Clinical Milestones of Disease in
579 Amyotrophic Lateral Sclerosis. *PLoS One* **10**, e0119045 (2015).
- 580 59. Sorrentino, P. *et al.* Flexible brain dynamics underpins complex behaviours as observed
581 in Parkinson's disease. *Sci. Rep.* **11**, 4051 (2021).

- 582 60. Wager, T. D., Lindquist, M. & Kaplan, L. Meta-analysis of functional neuroimaging data:
583 current and future directions. *Soc. Cogn. Affect. Neurosci.* **2**, 150–158 (2007).
- 584 61. Nyberg, L. *et al.* Longitudinal evidence for diminished frontal cortex function in aging.
585 *Proc. Natl. Acad. Sci. U. S. A.* **107**, 22682–22686 (2010).
- 586 62. Poletti, B. *et al.* The Arrows and Colors Cognitive Test (ACCT): A new verbal-motor free
587 cognitive measure for executive functions in ALS. *PLoS One* **13**, e0200953 (2018).
- 588 63. Keller, J. *et al.* A first approach to a neuropsychological screening tool using eye-tracking
589 for bedside cognitive testing based on the Edinburgh Cognitive and Behavioural ALS
590 Screen. *Amyotroph. Lateral Scler. Front. Degener.* **18**, 443–450 (2017).
- 591 64. Steinbach, R., Gaur, N., Stubendorff, B., Witte, O. W. & Grosskreutz, J. Developing a
592 Neuroimaging Biomarker for Amyotrophic Lateral Sclerosis: Multi-Center Data Sharing
593 and the Road to a “Global Cohort”. *Front. Neurol.* **9**, (2018).
- 594 65. Kasper, E. *et al.* No change in executive performance in ALS patients: A longitudinal
595 neuropsychological study. *Neurodegener. Dis.* **16**, 184–191 (2016).
- 596
- 597
- 598

599 **Figures and tables**

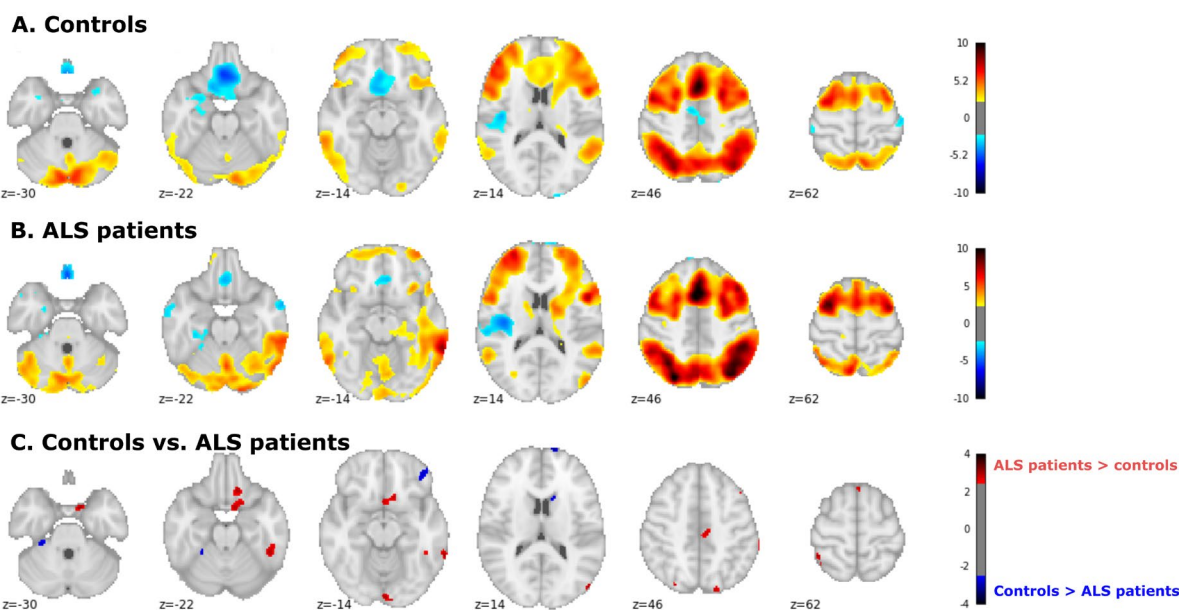


Figure 1. Brain activity during 2-back > 0-back contrast. Brain activity as computed as a group means of controls (A) and ALS patients (B) and group contrasts of controls vs. ALS patients (C, with brain activity in ALS patients > controls in red and brain activity in controls > ALS patients in blue). Computed by FSL Randomise, 5000 permutations, thresholded at $T > 2.5$.

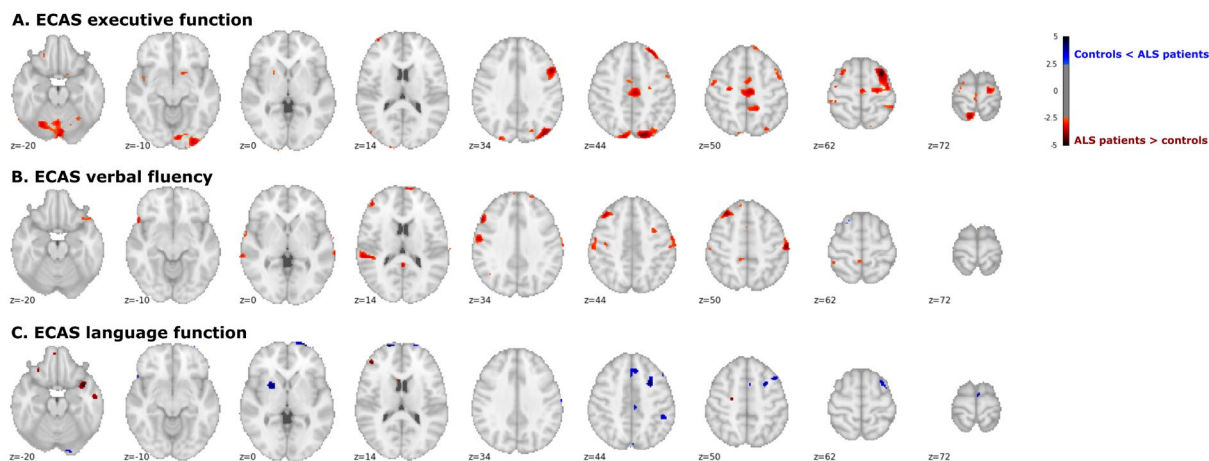
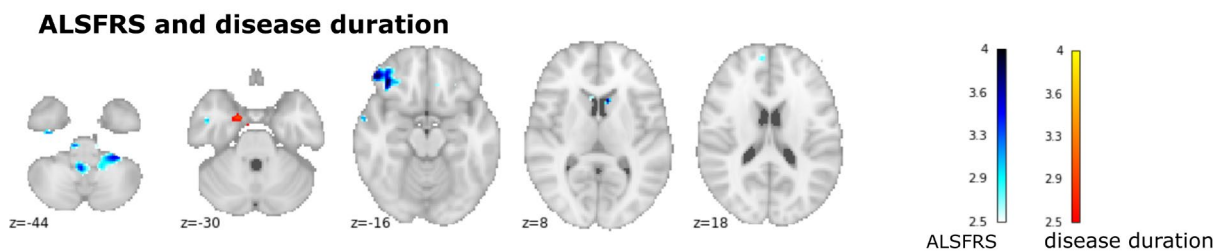


Figure 2. Group comparisons of the association of brain activity during 2-back > 0-back contrast with neuropsychological function. Group comparisons of regression analyses of the ECAS subdomains executive function (A), verbal fluency (B) and language function (C) on brain activity in the 2-back minus 0-back contrast. Computed by FSL Randomise, 5000 permutations, thresholded at $T > 2.5$.



613

614 **Figure 3. Interaction of brain activity during 2-back > 0-back contrast with clinical**
 615 **variables.** Regression of ALSFRS-R (in red-yellow) and disease duration (in blue) on brain
 616 activity in ALS patients (computed by FSL Randomise, 5000 permutations, thresholded at T
 617 > 2.5). The ALSFRS was positive associated with brain activity of frontocerebellar regions
 618 and disease duration was positively associated with brain activity of the left temporal cortex.

619

	Controls		ALS patients		p-value
	N = 21		N = 22		
	Mean	S.D.	Mean	S.D.	
Age (years)	63.45	8.15	62.64	9.06	0.759
Gender (W:M)	10:11		10:12		0.887
Education (years)	14.79	2.07	15.03	3.14	0.774
Site of onset (limb:bulbar)			14:8		
ALS phenotype (classical: flail limb)			21:1		
Disease duration (months)			22.60	21.56	
ALSFRS-R			37.60	4.97	
genetic/sporadic ALS			1x c9orf72		
ALS-ni/ALS-ci			12:10		

620 **Table 1. Means and standard deviations (S.D.) of demographical data of ALS patients**
 621 **and controls and clinical characteristics of the patients.** There were no significant
 622 differences in demographical data (age, gender, education) between groups.

623

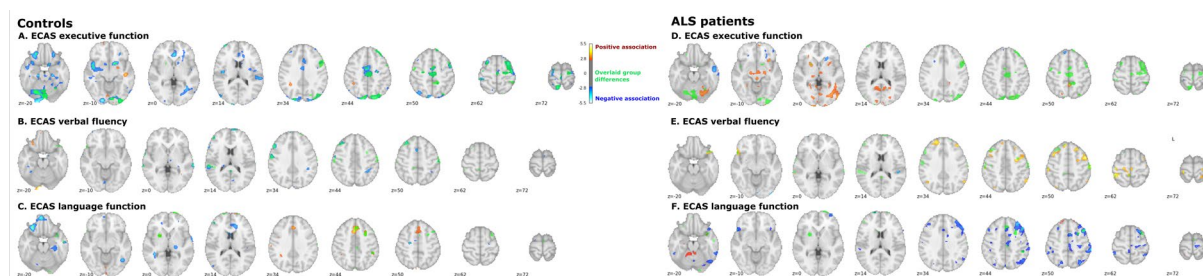
	Controls		ALS patients		p-value
	N = 21		N = 22		
	Mean	S.D.	Mean	S.D.	
Memory (max 24)	17.10	2.86	15.62	3.98	0.155
Visuospatial (max 12)	11.71	0.56	11.86	0.35	0.277

ALS-Non-specific functions (max 36)	28.76	2.98	27.18	4.00	0.140
Language (max 28)	27.76	0.63	26.59	1.99	0.019
Verbal fluency (max 24)	19.52	4.05	17.64	5.65	0.249
Executive function (max 48)	38.76	2.36	38.77	6.23	0.944
ALS-Specific functions (max 100)	86.05	5.76	83.00	11.78	0.272
ECAS total score (max 136)	110.90	13.56	114.00	7.28	0.155

624 **Table 2. Means and standard deviations (S.D.) of the neuropsychological screening**
 625 **using ECAS (Edinburgh Cognitive and Behavioural ALS Screen) in patients and**
 626 **controls.** ANOVAS were used for comparison (here, uncorrected values are presented).

627

628 Supplementary material



629 **Figure S1. Group means of the interaction of brain activity and neuropsychological**
 630 **function during the 2-back minus 0-back contrast.** Group means of the regression analyses
 631 of the ECAS subdomains in controls (A-C) and ALS patients (D-F) on brain activity in the 2-
 632 back minus 0-back contrast with positive (in red) and negative associations (in blue). Additional
 633 display of the group contrasts ALS patients vs. controls (as seen in Figure 2).

635

636

637

638

639

640

641

642

643

644

645

	Healthy controls		ALS patients	
	N = 21		N = 22	
	Mean	S.D.	Mean	S.D.
0-back condition				
Accuracy (in %)	99.20	2.18	98.86	2.47
Reaction times (in ms)	494.71	37.10	547.68	73.03
2-back condition				
Accuracy (in %)	89.20	4.036	90.30	6.31
Reaction times (in ms)	656.07	84.42	677.58	128.70

646

647 **Table S1. Means and standard deviations (S.D.) of reaction times and accuracies of the**
648 **2- of patients and controls in the 0-back and 2-back condition of the n-back-task.**

649 **Table S1. Means and standard deviations (S.D.) of reaction times and accuracies of the 2- of patients and controls in the 0-back and 2-**
 650 **back condition of the n-back-task.**

651

Contrast	Cluster size	T-value	Max (X)	Max (Y)	Max (Z)	COG (X)	COG (Y)	COG (Z)	Area
Main effect in controls									
	32463	10.5	45	71	60	44.2	73.8	51	L + R inferior, middle, superior frontal gyrus, insula, anterior + middle cingulate cortex
	21715	9.63	28	30	54	42.5	32.8	49.5	L + R inferior + superior parietal lobule, precuneus
	66	3.48	53	54	45	53	54.5	44.9	L thalamus
	55	2.91	33	50	61	33	49.5	61.8	R white matter
	27	2.83	32	46	43	34.1	48.9	43	R thalamus
	21	2.86	62	18	35	62	17.8	35.1	L middle occipital gyrus
	15	2.72	51	67	38	50.9	67.5	38.1	L caudate nucleus
Main effect in ALS patients									
	60185	11.2	46	69	61	42.3	55.9	49.7	L + R inferior, middle, superior frontal gyrus, anterior + middle cingulate cortex, inferior + superior parietal lobule, insula
	46	3.24	33	50	63	33.4	50.4	63	R white matter
	32	2.95	21	39	12	22.6	39	12.1	R cerebellum
	14	2.79	37	36	33	36.9	36.1	33.2	R inferior temporal gyrus
	11	2.7	63	54	59	63.5	54.1	59	R lingual gyrus
	10	2.82	17	57	17	16.7	57.5	17.2	L precentral gyrus
Controls > ALS patients									
	108	2.87	24	85	29	23.5	84	30.2	R inferior frontal gyrus
	55	3.48	40	96	47	39.3	96.4	45.8	R frontal pole
	18	2.89	60	47	21	59.3	46.9	20.7	L cerebellum
	18	2.88	39	71	43	38.6	71.3	42.8	R caudate nucleus
ALS patients > controls									
	275	3.16	39	66	21	40.3	70.7	27.1	R medial orbitofrontal cortex
	112	3.27	22	42	26	21.3	42.8	26.2	R inferior temporal gyrus

47	3.09	13	42	28	13.3	42	27.6	R inferior temporal gyrus
41	2.84	41	53	59	41.7	52.3	59.5	R medial cingulate cortex
37	3.02	45	18	28	44.7	17.8	28.6	L cerebellum
36	3.24	36	21	58	35.6	21.3	57.8	R cuneus
31	2.94	64	39	35	64.4	38.7	34.8	L white matter
27	3.14	67	40	67	65.6	36.7	65.8	L inferior parietal lobule
17	2.8	62	76	34	61.8	75.7	34.4	R inferior temporal gyrus
13	2.86	44	76	67	44.5	73.7	68	L posterior-medial frontal gyrus
13	2.72	65	64	18	65.2	64.5	17.5	L inferior temporal gyrus
11	2.86	40	96	38	40.4	95.6	37.9	R frontal pole
10	2.7	17	59	16	17.5	58.7	16.6	L inferior frontal gyrus
Effect of disease duration (in ALS patients)								
61	3.07	55	63	19	54.3	62.7	20.1	L parahippocampal gyrus
15	3.37	45	40	71	44.5	40.1	70.5	L primary motor cortex
13	2.92	72	73	37	71.5	73	36.8	L inferior frontal gyrus
10	2.75	61	42	59	60.9	42.2	58	L inferior parietal lobule
Effect of ALSFRS-R (in ALS patients)								
639	4	47	40	11	42.9	40.6	12.2	L + R cerebellum
166	3.59	63	81	27	63.8	81.1	27.7	L inferior frontal gyrus
73	2.89	49	92	43	49.1	91.5	43.4	L superior medial gyrus
47	3.28	32	79	26	32.7	79.4	26.2	R middle orbital gyrus
36	2.98	36	60	18	36.8	59.5	18.6	R entorhinal cortex
34	3.39	58	49	72	58.4	49.9	71.8	L pre- and postcentral gyrus
29	2.98	76	63	27	75	62.8	27.1	L middle temporal gyrus
25	2.76	68	62	22	68.2	62.2	22.4	L middle temporal gyrus
24	3.34	41	72	38	40.8	71.7	38.1	R caudate nucleus
21	3.07	44	48	19	44.2	47.9	19	L+R brainstem
17	2.68	68	29	56	67.9	28.9	56.8	L angular gyrus
17	2.73	51	92	26	51.1	91.7	26.3	L superior orbital gyrus
14	3.32	45	70	70	45.4	70.8	69.4	L posterior-medial frontal gyrus
12	3.08	52	56	74	52.4	55.9	73.7	L paracentral lobule
10	2.91	51	18	26	51	17.8	26.3	L ventral visual cortex
10	2.82	53	29	26	52.9	28.8	26.2	L cerebellum

10	3	49	50	13	48.9	49.9	13.6	L brainstem
Effect of ECAS executive function in ALS patients > controls								
1172	4.93	29	68	66	27.5	63.6	63.4	R middle + superior frontal gyrus, R precentral gyrus
693	3.92	43	21	28	47.5	25.8	26.6	L cerebellum
661	4.52	38	21	57	32.4	23.1	56.4	R inferior + superior parietal lobule, cuneus
480	3.87	43	54	60	43.7	53.2	60.6	L + R medial cingulate cortex
290	3.6	51	20	58	53.5	19.3	53.3	L superior parietal lobule, occipital lobe
163	3.69	31	16	32	30.4	16.8	31.5	R dorsal occipital cortex
150	3.93	30	84	57	29	82.7	56.9	R middle + superior frontal gyrus
137	3.22	38	41	61	40.7	40.5	61.4	R precuneus
112	4.03	50	35	72	50.6	35.2	71.1	L superior parietal lobule
88	2.98	43	62	61	44.5	62.1	60.2	R posterior-medial frontal gyrus
84	3.24	30	58	47	29.6	58.4	46.3	R white matter
61	3.2	37	68	29	37.5	67.4	28.9	R medial orbitofrontal cortex
58	3.48	60	68	66	59.1	68.4	66.2	L middle + superior frontal gyrus
54	2.99	67	58	65	67.3	58.9	63.6	L precentral gyrus
50	3.27	22	42	66	24.6	42.6	66.7	R postcentral gyrus
41	2.84	32	44	22	30.3	45.4	21.9	R cerebellum, R fusiform gyrus
40	3.22	58	56	60	58.2	55.8	60.4	L white matter
37	2.91	24	41	23	24.1	40.4	23	R fusiform gyrus
36	2.8	20	49	42	21	50.9	41	R superior temporal gyrus
27	2.8	30	34	25	29.9	34.4	25.1	R cerebellum
26	2.76	68	47	67	66.3	46.7	66.7	L postcentral gyrus
22	3.64	51	57	74	52	56.7	74	L posterior-medial frontal gyrus
21	3.13	64	92	42	63.8	91.8	41.5	L superior parietal lobule
21	2.87	48	28	64	48.6	27.4	63.6	L middle frontal gyrus
20	2.77	63	29	63	61.6	28.5	62.6	L superior parietal lobule
18	3.08	38	86	60	38.2	86.1	60.1	R superior frontal gyrus
16	2.72	33	56	57	32.6	56.4	57.1	R white matter
15	2.99	58	60	70	57	60.3	70.7	L superior frontal gyrus
14	3.09	68	56	40	68.4	56.6	40	L superior temporal gyrus
10	2.68	61	68	25	61.3	68.3	24.6	L temporal pole

10	2.72	55	68	37	55.5	68	36.7	L putamen
Effect of ECAS verbal fluency in ALS patients > controls								
373	3.92	71	46	44	74.2	51.1	41.3	L superior temporal gyrus
282	4.19	60	78	61	64.9	76.1	56.9	L middle frontal gyrus
259	3.55	75	59	53	73.6	58.1	54.8	L postcentral gyrus, L inferior parietal lobule
232	3.66	50	96	48	47.9	95.2	46.3	L superior frontal gyrus, L superior
186	4.29	16	54	60	16.7	53.3	60.7	R precentral + postcentral gyrus
132	3.4	47	43	64	47.3	43.2	64.4	L precuneus
76	3.43	28	45	70	27.9	48.3	69.6	R precentral + postcentral gyrus
76	4.02	64	87	49	65.2	86.4	47	L middle frontal gyrus
66	2.97	65	34	51	66.2	34.8	49.1	L angular gyrus
64	3.26	67	42	65	66.8	42.7	64.8	L postcentral gyrus
51	3.35	27	74	24	25.8	74.1	24.5	R inferior frontal gyrus
46	2.96	29	65	57	29	65.4	57.2	R white matter
42	3.88	45	40	43	45.3	40	42.8	unknown
28	3.47	70	72	30	69.6	72.4	29.5	L temporal pole
24	3.17	12	57	38	11.7	56.7	38.6	R superior temporal gyrus
21	2.87	46	66	63	45.5	66.8	62.6	L posterior-medial frontal gyrus
20	2.86	35	90	54	35.1	89.7	53.9	R superior frontal gyrus
19	3.02	79	47	36	78	46.5	35.8	L middle temporal gyrus
15	2.91	65	55	58	64.8	55.1	57.7	L postcentral gyrus
13	2.94	44	61	71	43.6	60.8	70.5	R posterior-medial frontal gyrus
12	2.72	62	44	68	60.6	43.8	68.7	L postcentral gyrus
11	2.77	49	84	63	49.4	84.9	60.7	L superior medial gyrus
Effect of ECAS language function in ALS patients > controls								
71	3.5	26	68	26	26.5	67.2	25.6	R temporal pole
48	3.43	68	84	41	67.9	84.2	41.2	L inferior temporal gyrus
34	2.87	17	58	25	17.3	58.3	25.4	R middle temporal gyrus
31	3.16	57	57	62	56.9	56.8	62.5	L precentral gyrus
19	2.96	18	65	24	18.4	64.8	24.2	R middle temporal gyrus
16	2.78	47	91	27	47.6	90.9	27.1	L frontal pole
13	2.73	60	78	26	59.5	78.2	26.2	L inferior frontal gyrus
11	2.87	13	63	37	13.5	62.8	37.6	R superior temporal gyrus

Effect of ECAS language function in controls > ALS patients

141	4.01	56	18	22	58.1	20	21.8	L cerebellum
135	3.12	42	78	57	43.9	77.2	56.8	R superior medial gyrus
124	3.56	32	69	58	31.5	69	58.5	R middle frontal gyrus
92	3.21	24	44	56	23.2	43.6	56.2	R supramarginal gyrus
76	3.48	57	67	36	57.1	66.8	35.6	L putamen
46	3.14	26	72	63	25.4	72.2	61.5	R middle frontal gyrus
39	4.05	54	97	42	52.9	96.6	43.5	L superior frontal gyrus
37	3.06	43	51	56	42.8	51.1	56.4	R medial cingulate cortex
23	3.31	27	65	66	28.3	66.7	66.4	R superior frontal gyrus
15	3.35	44	77	65	44.4	77.1	64.5	L superior medial gyrus
12	2.63	64	44	55	63.7	44.3	55	L inferior parietal lobule
12	2.94	33	97	41	34.8	96.6	43.6	R superior frontal gyrus
11	2.65	41	98	39	41.2	97.4	40.3	R posterior-medial frontal gyrus
11	3.51	44	60	71	43.6	60	71.2	R superior medial gyrus

652

653 **Table S2. Regions of significant activity in the 2back > 0-back contrast in controls and ALS patients and group comparison of effects of**
 654 **neuropsychological function on brain activity.**
 655

656

657

658