

Covid-19, Lockdowns and Motor Vehicle Collisions: Empirical Evidence from Greece

Sotiris VANDOROS

**King's College London
and
Harvard T.H. Chan School of Public Health**

Email: s.vandoros@kcl.ac.uk

Abstract

Reduced mobility during Covid-19 lockdowns means fewer vehicles at risk of collision, but also an opportunity to speed on empty streets. Other collision risk factors that have changed during the pandemic include alcohol consumption, sleeping patterns, distraction, unemployment and economic uncertainty. Evidence on the impact of the Covid-19 pandemic on motor vehicle collisions is scarce, as such statistics are often released with a delay. The objective of this paper is to examine the impact of the first wave of the pandemic and the first lockdown on motor vehicle collisions and associated injuries and deaths in Greece. Using monthly data at the regional unit level, I provide descriptive evidence and subsequently follow a difference-in-difference econometric approach, comparing trends in 2020 to those of the previous five years while controlling for unemployment and petrol prices. I found a steep decline in collisions, injuries and deaths compared to what would have been otherwise expected. In March and April 2020, there were about 1,226 fewer collisions, 72 fewer deaths, 40 fewer serious injuries and 1,426 fewer minor injuries compared to what would have been expected in the absence of the pandemic.

Keywords: Covid-19; lockdowns; motor vehicle collisions; crashes; injury; mortality

1. Background

Covid-19 has caused over 1.7 million deaths globally. The pandemic has led to a decrease in economic activity and rising unemployment rates.¹ There have been reports that the pandemic is also affecting health outcomes for people who are not suffering from Covid-19. These may include delayed diagnosis and treatment,² mental health problems,³ suicide⁴ and excess mortality in general.⁵

Another outcome that we would expect to be affected by the pandemic and lockdowns is that of motor vehicle collisions (MVC). The mechanisms between conditions associated with

the pandemic and collisions are broad, and relate not only to lockdowns, but also to a number of other factors.

First, the most obvious reason is that reduced mobility means fewer cars on the streets being at risk of collision. People's mobility was reduced as a result of the lockdown, as well as of their own concerns of being exposed to the virus.

Second, less traffic volume would create the opportunity to speed on empty streets.⁶⁻⁷ Speeding is a major collision risk factor, which is also likely to lead to more severe crashes and a higher likelihood of death.

Third, Covid-19 has led to an increase in unemployment, and there is strong empirical evidence that collisions decrease during recessions.⁸⁻⁹

Fourth, previous research suggests that financial worries and economic uncertainty are associated with car crashes, possibly due to distraction, frustration and lack of sleep.¹⁰⁻¹² Inequality and financial issues may affect reduce social cohesion¹³ and make individuals act more selfishly.¹⁴

Fifth, worrying about loved ones who have Covid-19 may also cause distraction, thus leading to car crashes.¹⁵

Sixth, sleep length and patterns have been affected by conditions linked to the pandemic.¹⁶⁻

17

Finally, alcohol consumption increased during the pandemic,¹⁸ but as bars and restaurants remained closed during lockdowns, this may have taken place mostly at home.

There have been reports of a decrease in collisions and injuries during lockdowns in a number of countries,¹⁹⁻²² but a recent study presents evidence of an increase in speeding and deaths in others.²³ There is also evidence on an increase in speeding in Greece in the early stages of the pandemic.²⁴

The objective of this study is to examine whether there was a change in the number of motor vehicle collisions and associated injuries and deaths during the first wave of the Covid-19 pandemic and first lockdown in Greece.

2. Data and Methods

I used monthly data on motor vehicle collisions in Greece for the period 2015-2020, obtained from the Greek Statistics Authority. Monthly data included the total number of collisions involving death or injury; the number of deaths; the number of serious injuries; and the number of minor injuries. Data were reported at the regional unit level (there are 51 units in total). Data were extracted on 20 December 2020, and include some preliminary figures that may be adjusted by the data source at a later date. In addition, I obtained data on petrol prices from Eurostat and unemployment rates from the Greek Statistics Authority.

The first Covid-19 case was reported in Greece on 26 February 2020. As a result of increasing infection rates, schools closed on 10 March, followed by closure of bars, cafés and restaurants on 13 March. The first Covid-19 death was reported a few days later, on 12 March, and Greece entered a national lockdown from 23 March to 4 May. As demonstrated in Figure A1 in the Appendix, daily visits to workplaces during the first lockdown were reduced by up to 84%. Mobility relating to retail & recreation was reduced by up to 86%²⁵

In order to study the association between the pandemic and collisions, I first used graphs to compare trends in crashes in 2020 to trends in the previous five years. MVCs demonstrate seasonal patterns, which is why we compare trends in 2020 to those in the same months in previous years, rather than between different months in the same year.

However, there are additional factors affecting collisions, including unemployment and petrol prices, so multivariate models are required. Finding a control group is particularly challenging, given that Covid-19 is a global pandemic. In the absence of the pandemic, one

would expect that the trends in MVCs would be the same in 2020 as in previous years. Given that MVCs demonstrate seasonal patterns, the difference between crashes in January-February and March-April in 2020 would be similar to the difference between crashes in January-February and March-April in previous years. Therefore, in the empirical model, 2020 is the ‘treatment group’ (in which Covid-19 occurred), and the period from March onwards in every year is the ‘treatment period’ (as that is when the first Covid-19 death occurred in Greece, and when the first lockdown was introduced). A similar approach, using a difference-in-differences econometric model with previous years as a control group, has been followed in previous studies in the absence of a control group involving a different population.^{5,26-27}

The difference-in-differences econometric model is presented in Equation 1:

$$MVC_{it} = \beta_0 + \beta_1 year2020 + \beta_2 march_onwards + \beta_3 year2020 * march_onwards + \beta_4 unemployment + \beta_5 petrol_price + \sum_{m=5}^8 \beta_m month \sum_{k=9}^{59} \beta_k area + \varepsilon_{it}$$

Variable *MVC* represents collision outcomes (number of collisions; deaths; minor injuries; serious injuries). *year2020* is the ‘treatment group’ dummy that takes the value 1 for 2020 and 0 for previous years. *march_onwards* is the ‘treatment period’ dummy that takes the value of 1 for calendar months from march onwards in every year, and zero otherwise. *unemployment* and *petrol_price* represent the monthly unemployment rate and petrol prices, respectively. The model also includes monthly dummies to capture seasonality. Regional unit fixed effects were used to account for heterogeneity across areas, such as population, driving patterns, police presence etc. It is worth noting that population statistics are yet to be released for 2020. Summary statistics are presented in Table A1 in the Appendix.

3. Results

Figure 1 shows the trends in MCVs, deaths and minor and serious injuries in years 2015-2020. It is clear from the graphs that there was a steep decline in all four outcomes during the first lockdown (in March and April 2020), compared to trends in previous years. MVC outcomes also remained below the those of previous years' after the end of the lockdown, although the difference was much smaller than during the lockdown in Spring.

MVCs are highly seasonal, so I compared the change between January-February (before the lockdown) and March-April (during the lockdown) 2020 to the corresponding changes in the previous five years (Table 1). While the average increase in MVCs between January-February and March-April in years 2015-2019 was 19.79%, in 2020 there was a *decrease* by 49.49%. Similarly, deaths in 2020 decreased by 53.13% between January-February and March-April, while in the previous five years they had demonstrated a 10% increase.

[Insert Figure 1 here]

[Insert Table 1 here]

Results of the difference-in-differences econometric analysis are presented in Table 2. Column 1 provides the results on the total number of collisions. The coefficient of the difference-in-differences interaction term is negative [Diff-in-diff coefficient = -12.020; 95%CI = -18.246 to -5.795; $p < 0.01$], indicating that there were on average 12 fewer monthly collisions per Regional Unit compared to what would have been otherwise expected. This translates to 1,226 fewer collisions for the entire country in total during lockdown months March and April.

Results on deaths are presented in Column 2. Again, the coefficient of the difference-in-differences interaction term is negative [Diff-in-diff coefficient = -0.703; 95%CI = -1.131 to -0.276; $p < 0.01$]. There were on average 0.703 fewer monthly deaths per Regional Unit than we would have otherwise expected, meaning that during March and April there were 72 fewer deaths in total. Column 3 presents the results on serious injuries [coeff = -0.407; 95%CI = -0.774 to -0.039; $p < 0.05$] and Column 4 presents results on minor injuries [coeff = -13.981; 95%CI = -21.383 to 6.580; $p < 0.01$].

[Insert Table 2 here]

In order to study the impact of the pandemic in general rather than just the first lockdown period on MVCs, I extended the study period until August, before the second Covid-19 wave kicked in. Results are presented in Table A2 in the Appendix. Once again, the coefficient of the difference-in-differences interaction term is negative for all four outcomes [Collisions: coeff = -7.294; 95%CI = -10.698 to -3.890; $p < 0.01$. Deaths: coeff = -0.538; 95%CI = -0.874 to -0.203; $p < 0.01$. Serious injuries: coeff = -0.414; 95%CI = -0.752 to -0.077; $p < 0.05$. Minor injuries: coeff = -8.878; 95%CI = -13.123 to -4.633; $p < 0.01$]. However, the relative reduction in MVC outcomes over the entire period is on average smaller than when considering only the first two months of the pandemic.

4. Discussion

This study examined the impact of Covid-19 on MVC in Greece during the first wave of the pandemic. I found that during March and April 2020, there were about 1,226 fewer collisions (74% reduction), 72 fewer deaths (80% reduction), 40 fewer serious injuries (43%) and 1,426 fewer minor injuries (81%) compared to what would have been expected in the absence of the

pandemic. Extending the study period until August suggests that during the entire study period there was a total reduction by 2,232 collisions, 165 deaths, 127 serious injuries, and 2,716 minor injuries.

Results of this study are particular to the first wave of the pandemic in Greece, which saw a relatively small number of coronavirus cases and deaths, and there was little evidence of effects on other outcomes (e.g. there was no reported increase in suicides.²⁸ Results are not necessarily generalisable to other countries that have different types of restrictions (if any) or the second wave in Greece, where the number of cases, hospitalisations and deaths was much larger than the first wave.

There are a number of reasons behind any change in the number of MVC during the pandemic. These include factors that affect traffic volume, i.e. lockdowns, fear of catching Covid-19 and unemployment; and factors that affect driving behaviour, i.e. speeding;⁶ distraction;¹⁵ uncertainty;¹¹ alcohol;¹⁸ and change in sleep duration, quality and patterns.¹⁶ The multivariate nature of the relationship between Covid-19 and MVC makes disentangling the effects of individual factors challenging.

The findings of this paper add to the existing literature that found a change in MVC, injuries and deaths during the pandemic, whether they report an increase¹⁹⁻²² or a decrease.²³ The findings also relate to the discussion on excess mortality and other spillover effects^{5,29} and provide evidence on yet another possible factor contributing to the impact of Covid-19 on other health outcomes.

Overall, the Covid-19 pandemic has cost many lives, stretched health system capacity, led to recessions and unemployment and has caused many other health problems. The reduced number of collisions and related fatalities are just a small positive spillover effect, which is much smaller than the overall negative effects of the virus, and also came as a result of a further negative consequence of the pandemic: that of reduced mobility and freedom.

Conflict of interest: None

Funding: None

Ethics approval: The data used were aggregate anonymous data so ethics approval was not required.

Checklist: There is no relevant checklist of observational studies.

Data availability statement: The data used on collisions and unemployment are freely available on the website of the Greek Statistics Authority. Petrol prices are provided by Eurostat and are freely available online.

References

- [1] Chudik A, Mohaddes K, Perasan MH, Raissi M, Rebucci A. 2020. Economic consequences of Covid-19: A counterfactual multi-country analysis. VoxEU. Available at: <https://voxeu.org/article/economic-consequences-covid-19-multi-country-analysis>
- [2] Maringe, C., Spicer, J., Morris, M., Purushotham, A., Nolte, E., Sullivan, R., Rachet, B. and Aggarwal, A., 2020. The impact of the COVID-19 pandemic on cancer deaths due to delays in diagnosis in England, UK: a national, population-based, modelling study. *The lancet oncology*, 21(8), pp.1023-1034.
- [3] Pierce, M., Hope, H., Ford, T., Hatch, S., Hotopf, M., John, A., Kontopantelis, E., Webb, R., Wessely, S., McManus, S. and Abel, K.M., 2020. Mental health before and during the COVID-19 pandemic: a longitudinal probability sample survey of the UK population. *The Lancet Psychiatry*, 7(10), pp.883-892.
- [4] Nomura, S., Kawashima, T., Yoneoka, D., Tanoue, Y., Eguchi, A., Gilmour, S., Kawamura, Y., Harada, N. and Hashizume, M., 2020. Trends in suicide in Japan by gender during the COVID-19 pandemic, up to September 2020. *Psychiatry research*, p.113622.
- [5] Vandaloros, S., 2020. Excess Mortality during the Covid-19 pandemic: Early evidence from England and Wales. *Social Science & Medicine*, p.113101.
- [6] The Guardian, 2020. UK motorists caught at 'extreme speeds' on quiet lockdown roads. 13 April 2020. Available at: <https://www.theguardian.com/world/2020/apr/13/increase-in-speeding-incidents-on-uks-quiet-lockdown-roads>
- [7] Inada, H., Ashraf, L. and Campbell, S., 2020. COVID-19 lockdown and fatal motor vehicle collisions due to speed-related traffic violations in Japan: a time-series study. *Injury Prevention*. Doi: 10.1136/injuryprev-2020-043947
- [8] Ruhm CJ. Are recessions good for your health?. *Q J Econ*. 2000 May 1;115(2):617-50.
- [9] Stuckler, D., Basu, S., Suhrcke, M., Coutts, A. and McKee, M., 2011. Effects of the 2008 recession on health: a first look at European data. *Lancet*, 378(9786), pp.124-125.

- [10] VANDOROS, S., KAVETSOUS, G. and DOLAN, P., 2014. Greasy roads: the impact of bad financial news on road traffic accidents. *Risk analysis*, 34(3), pp.556-566.
- [11] VANDOROS, S., AVENDANO, M. and KAWACHI, I., 2018. The short-term impact of economic uncertainty on motor vehicle collisions. *Preventive medicine*, 111, pp.87-93.
- [12] GIULIETTI, C., TONIN, M. and VLASSOPOULOS, M., 2020. When the market drives you crazy: Stock market returns and fatal car accidents. *Journal of health economics*, 70, p.102245.
- [13] KAWACHI, I., KENNEDY, B.P., LOCHNER, K. and PROTHROW-STITH, D., 1997. Social Capital, Income Inequality, and Mortality. *Am J Public Health*, 87(9), pp.1491-1498.
- [14] VOHS, K.D., MEAD, N.L. and GOODE, M.R., 2006. The psychological consequences of money. *Science*, 314(5802), pp.1154-1156.
- [15] LAGARDE, E., CHASTANG, J.F., GUEGUEN, A., COEURET-PELLICER, M., CHIRON, M. and LAFONT, S., 2004. Emotional stress and traffic accidents: the impact of separation and divorce. *Epidemiology*, 15(6), pp.762-766.
- [16] CELLINI, N., CANALE, N., MIONI, G. and COSTA, S., 2020. Changes in sleep pattern, sense of time and digital media use during COVID-19 lockdown in Italy. *Journal of Sleep Research*, p.e13074.
- [17] LEONE, M.J., SIGMAN, M. and GOLOMBEK, D.A., 2020. Effects of lockdown on human sleep and chronotype during the COVID-19 pandemic. *Current Biology*, 30(16), pp.R930-R931.
- [18] POLLARD, M.S., TUCKER, J.S. and GREEN, H.D., 2020. Changes in adult alcohol use and consequences during the COVID-19 pandemic in the US. *JAMA network open*, 3(9), pp.e2022942-e2022942.
- [19] SUTHERLAND, M., MCKENNEY, M. and ELKBULI, A., 2020. Vehicle related injury patterns during the COVID-19 pandemic: What has changed?. *The American Journal of Emergency Medicine*.
- [20] CALDERON-ANYOSA, R.J. and KAUFMAN, J.S., 2020. Impact of COVID-19 lockdown policy on homicide, suicide, and motor vehicle deaths in Peru. *Preventive Medicine*, p.106331.
- [21] DOUCETTE, M.L., TUCKER, A., AUGUSTE, M.E., WATKINS, A., GREEN, C., PEREIRA, F.E., BORRUP, K.T., SHAPIRO, D. and LAPIDUS, G., 2020. Initial impact of COVID-19's stay-at-home order on motor vehicle traffic and crash patterns in Connecticut: an interrupted time series analysis. *Injury Prevention*. Doi: 10.1136/injuryprev-2020-043945
- [22] SALADIÉ, Ò., BUSTAMANTE, E. and GUTIÉRREZ, A., 2020. COVID-19 lockdown and reduction of traffic accidents in Tarragona province, Spain. *Transportation research interdisciplinary perspectives*, 8, p.100218.
- [23] MEYER, M.W., 2020. COVID Lockdowns, Social Distancing, and Fatal Car Crashes: More Deaths on Hobbesian Highways?. *Cambridge Journal of Evidence-Based Policing*, pp.1-22.

- [24] Katrakazas, C., Michelaraki, E., Sekadakis, M. and Yannis, G., 2020. A descriptive analysis of the effect of the COVID-19 pandemic on driving behavior and road safety. *Transportation research interdisciplinary perspectives*, 7, p.100186.
- [25] Google LLC "Google COVID-19 Community Mobility Reports". <https://www.google.com/covid19/mobility/> Accessed: 20 December 2020.
- [26] Metcalfe, R., Powdthavee, N. and Dolan, P., 2011. Destruction and distress: using a quasi-experiment to show the effects of the September 11 attacks on mental well-being in the United Kingdom. *The Economic Journal*, 121(550), pp.F81-F103.
- [27] Powdthavee, N., Plagnol, A.C., Frijters, P. and Clark, A.E., 2019. Who got the Brexit blues? The effect of Brexit on subjective wellbeing in the UK. *Economica*, 86(343), pp.471-494.
- [28] VANDOROS, S., THEODORIKAKOU, O., KATSADOROS, K., ZAFEIROPOULOU, D. and KAWACHI, I., 2020. No evidence of increase in suicide in Greece during the first wave of Covid-19. *medRxiv*. Doi: 10.1101/2020.11.13.20231571
- [29] Rivera, R., Rosenbaum, J.E. and Quispe, W., 2020. Excess mortality in the United States during the first three months of the COVID-19 pandemic. *Epidemiology & Infection*, 148.

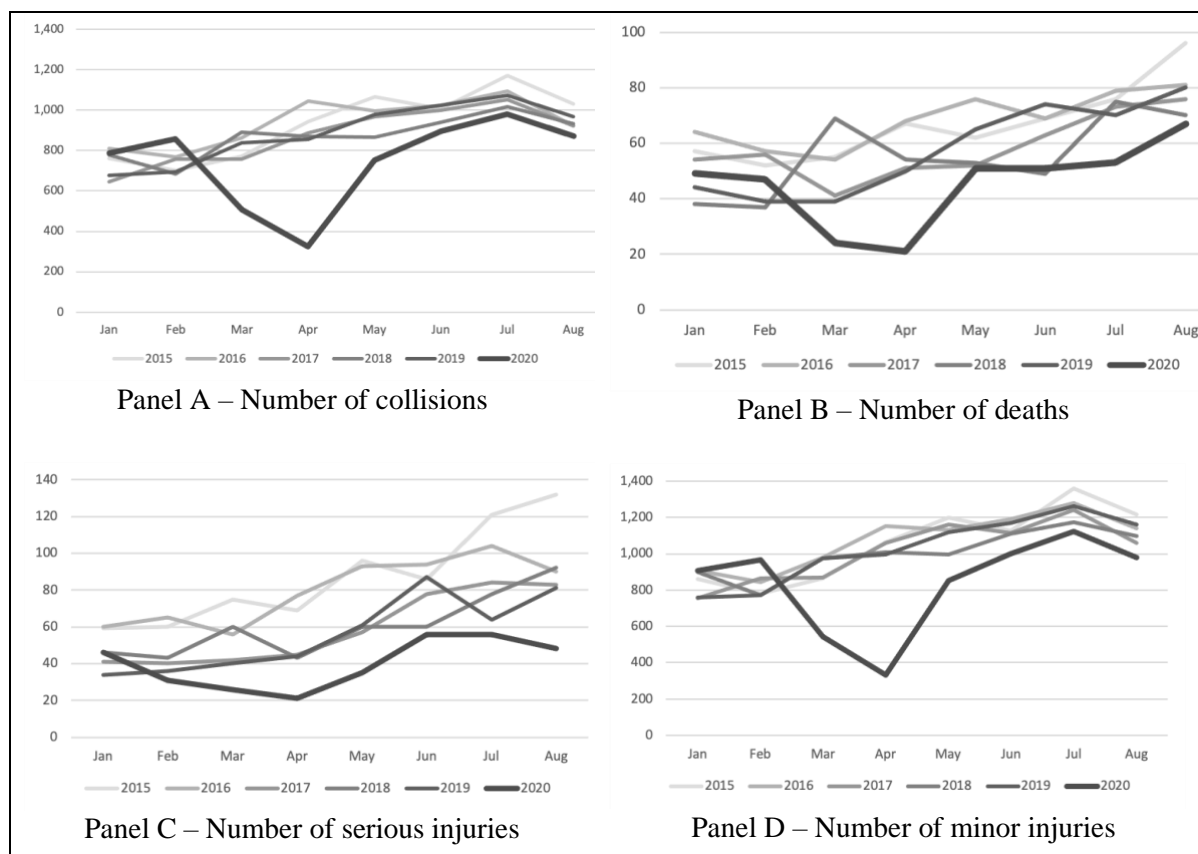


Figure 1 – Monthly accidents, deaths, serious injuries and minor injuries in Greece, 2015-2020

Table 1. Changes in collisions, deaths and injuries per regional unit before and after the first lockdown in Greece in 2020 and the corresponding months in the previous five years

	Jan - Feb	Mar - Apr	% difference
Collisions			
2020	1,646	833	-49.39%
2015-2019	1,455	1,743	19.79%
Deaths			
2020	96	45	-53.13%
2015-2019	100	110	10.00%
Minor injuries			
2020	1,874	877	-53.20%
2015-2019	1,643	1,988	21.00%
Serious injuries			
2020	77	47	-38.96%
2015-2019	97	110	13.40%

Data per regional unit (51 units in total)

Table 2. Difference-in-differences regression results, months January – April

Dependent variable:	(1) Collisions	(2) Deaths	(3) Serious injuries	(4) Minor injuries
Diff-in-diff interaction term	-12.020*** [-18.246 - -5.795]	-0.703*** [-1.131 - -0.276]	-0.407** [-0.774 - -0.039]	-13.981*** [-21.383 - -6.580]
Treatment period dummy (March - April)	3.706*** [1.592 - 5.819]	0.189* [-0.002 - 0.379]	0.194* [-0.001 - 0.388]	4.255*** [1.793 - 6.717]
Treatment group dummy (2020)	2.712** [0.340 - 5.085]	0.216 [-0.055 - 0.488]	0.287** [0.046 - 0.528]	3.214** [0.039 - 6.389]
Unemployment rate	0.018 [-0.168 - 0.204]	0.032** [0.004 - 0.059]	0.081*** [0.044 - 0.118]	0.014 [-0.214 - 0.241]
Petrol prices per litre	-5.043 [-15.923 - 5.837]	-0.393 [-1.315 - 0.528]	-0.171 [-1.202 - 0.861]	-3.308 [-15.720 - 9.104]
Month dummies	yes	yes	yes	yes
Regional Unit Fixed Effects	yes	yes	yes	yes
Constant term	11.395 [-7.059 - 29.849]	0.203 [-1.600 - 2.006]	-1.184 [-3.386 - 1.018]	9.940 [-11.293 - 31.173]
Observations	1,224	1,224	1,224	1,224
R-squared	0.965	0.780	0.796	0.961
F-statistic	71.40	13.13	14.32	62.33

Robust ci in brackets. *** p<0.01, ** p<0.05, * p<0.1

Appendix

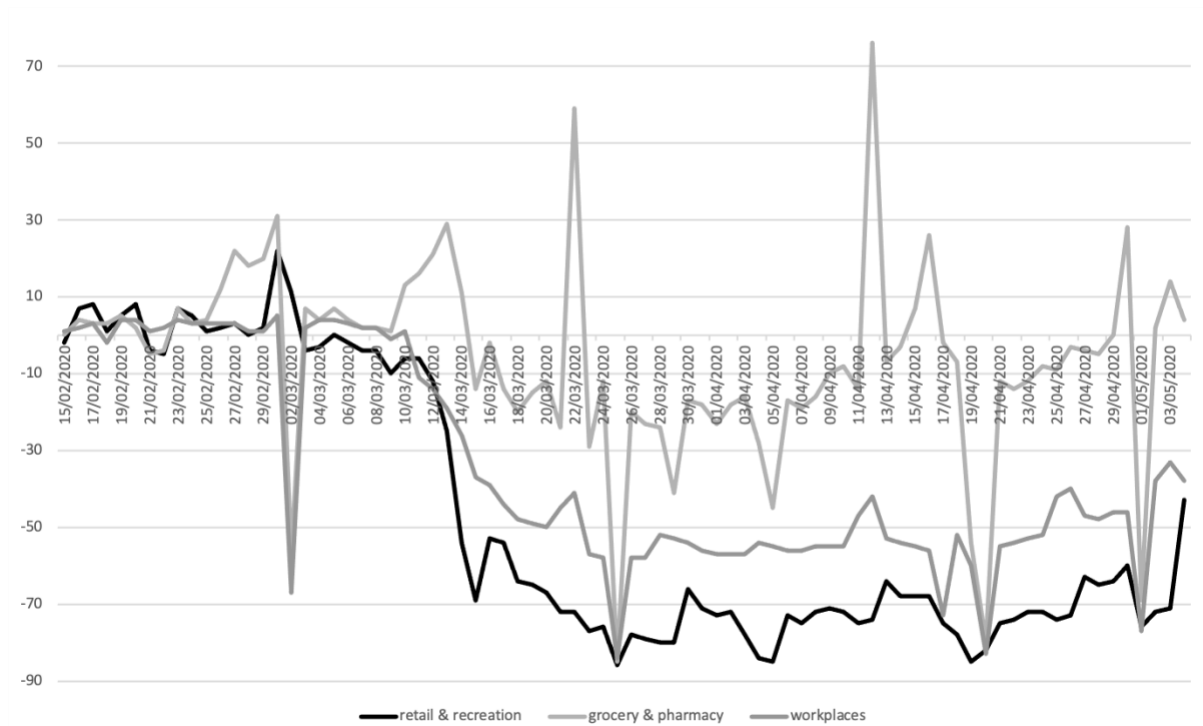


Figure A1 – Mobility trends before and during the first lockdown in Greece. Based on data from Google COVID-19 Community Mobility Reports, 2020

Table A1. Summary Statistics

Variable	Mean	Std. Dev.	Min	Max
Collisions	17.21	64.62	0	572
Deaths	1.15	2.40	0	23
Serious injuries	1.27	2.78	0	28
Minor injuries	19.36	73.51	0	634
Treatment period dummy (March - April)	0.75	0.43	0	1
Treatment group dummy (2020)	0.17	0.37	0	1
Unemployment rate	20.77	3.40	14.9	27.4
Petrol price per litre in Euros	1.50	0.09	1.32	1.65

N=2,448. Data at regional unit level.

Table A2. Difference-in-differences regression results, months January – August

Dependent variable:	(1) Collisions	(2) Deaths	(3) Serious injuries	(4) Minor injuries
Diff-in-diff interaction term	-7.294*** [-10.698 - -3.890]	-0.538*** [-0.874 - -0.203]	-0.414** [-0.752 - -0.077]	-8.878*** [-13.123 - -4.633]
Treatment period dummy (Mrch - August)	5.549*** [3.613 - 7.485]	0.709*** [0.514 - 0.905]	1.032*** [0.782 - 1.281]	6.952*** [4.675 - 9.228]
Treatment group dummy (2020)	3.161*** [1.113 - 5.210]	0.186 [-0.082 - 0.454]	0.256** [0.005 - 0.507]	4.028*** [1.338 - 6.718]
unemployment rate	0.167* [-0.030 - 0.364]	0.024** [0.002 - 0.046]	0.094*** [0.064 - 0.124]	0.185 [-0.051 - 0.421]
petrol prices per litre	-1.805 [-9.266 - 5.655]	-0.504 [-1.201 - 0.193]	0.613 [-0.280 - 1.506]	-1.635 [-10.510 - 7.240]
month dummies	yes	yes	yes	yes
Regional Unit Fixed Effects	yes	yes	yes	yes
Constant term	2.658 [-11.461 - 16.777]	0.455 [-0.945 - 1.856]	-2.725*** [-4.600 - -0.851]	2.622 [-14.305 - 19.549]
Observations	2,448	2,448	2,448	2,448
R-squared	0.969	0.773	0.758	0.965
F-statistic	117.3	24.43	24.55	96.95

Robust CI in brackets. *** $p < 0.01$, ** $p < 0.05$, * $p < 0.1$