

1 **Coronavirus GenBrowser for monitoring the transmission and**
2 **evolution of SARS-CoV-2**

3

4 Dalang Yu^{1,7,†}, Xiao Yang^{1,5,†}, Bixia Tang^{2,†}, Yi-Hsuan Pan^{3,†}, Jianing Yang^{1,7,†}, Junwei
5 Zhu^{2,†}, Guangya Duan^{2,7}, Zi-Qian Hao^{1,7}, Hailong Mu¹, Long Dai^{1,5}, Wangjie Hu^{1,7},
6 Mochen Zhang^{2,7}, Ying Cui^{2,7}, Tong Jin^{2,7}, Cui-Ping Li², Lina Ma², Language
7 translation team⁶, Xiao Su⁴, Guoqing Zhang^{1,7,*}, Wenming Zhao^{2,7,*}, Haipeng Li^{1,7,8,*}

8

9 ^{1,‡}Bio-Med Big Data Center, CAS Key Laboratory of Computational Biology,
10 Shanghai Institute of Nutrition and Health, Chinese Academy of Sciences,
11 Shanghai 200031, China.

12 ^{2,‡}National Genomics Data Center, Beijing Institute of Genomics (China National
13 Center for Bioinformatics), Chinese Academy of Sciences, Beijing 100101,
14 China.

15 ³Key Laboratory of Brain Functional Genomics of Ministry of Education, School of
16 Life Science, East China Normal University, Shanghai 200062, China.

17 ⁴Institut Pasteur of Shanghai, Chinese Academy of Sciences, Shanghai 200031,
18 China.

19 ⁵Shanghai Shenyou Biotechnology Co. LTD, Shanghai 201315, China.

20 ⁶Beijing Language and Culture University, Beijing 100083, China.

21 ⁷University of Chinese Academy of Sciences, Chinese Academy of Sciences, Beijing
22 100101, China.

23 ⁸Center for Excellence in Animal Evolution and Genetics, Chinese Academy of
24 Sciences, Kunming 650223, China.

25

26 [†]These authors contributed equally.

27 [‡]These institutes contributed equally.

28

29 ***Corresponding authors:** gqzhang@picb.ac.cn; zhaowm@big.ac.cn;
30 lihaipeng@picb.ac.cn

31

32

33 **Abstract:** A large volume of SARS-CoV-2 genomic data has accumulated. To timely
34 analyze and visualize the exponentially increasing viral genomic sequences, we
35 developed the Coronavirus GenBrowser (CGB) based on the framework of distributed
36 genome alignments and the evolutionary tree built on an existing subtree. All 98,496
37 internal nodes were named by CGB binary nomenclature. Among the 330,942
38 high-quality SARS-CoV-2 genomic sequences analyzed, 253,798 mutations and 971
39 mutation cold spots were identified. This analysis also revealed a strain dated early
40 March 2020 causing an outbreak in Beijing after three months of dormancy. Three
41 prevalent European variants were found to have no mutations in three months.
42 Another strain with S:D614G was found to have 671 identical descendants spreading
43 in six continents between February 2020 and January 2021. Mutation-dormant strains
44 provide evidences of cold-chain related transmission. Results of this study show that
45 CGB is an efficient platform for monitoring the dynamics of SARS-CoV-2
46 transmission.

47

48 **Key words**

49 Coronavirus GenBrowser; SARS-CoV-2; cold-chain related transmission;
50 mutation-dormant strains

51

52 **Main Text:** Severe acute respiratory syndrome coronavirus 2 (SARS-CoV-2) (1-3) has
53 infected more than 116 million people, and more than 2.5 million people have died
54 from COVID-19. Several web browsers have been developed to track the COVID-19
55 pandemic. The browser of the Johns Hopkins Coronavirus Resource Center displays
56 global and regional COVID-19 status, including numbers of confirmed cases, deaths,
57 tests, hospitalizations, and vaccinations (<https://coronavirus.jhu.edu/>). The COVID-3D
58 browser, developed by the University of Melbourne, shows the three-dimensional
59 structures of various wild-type and mutant proteins of SARS-CoV-2 based on their
60 nucleotide sequences (4). The UCSC SARS-CoV-2 Genome Browser is derived from
61 the well-established UCSC genome-browser for visualization of nucleotide and protein
62 sequences, sequence conservations, potential epitopes for production of antibodies,
63 primers for RT-PCR and sequencing, and many other properties of specific parts of
64 wild-type and variants of SARS-CoV-2 (5). The WashU Virus Genome Browser
65 provides Nextstrain-based phylogenetic-tree view and genomic-coordinate,
66 track-based view of genomic features of viruses (6). It also has many functions similar
67 to those of the UCSC SARS-CoV-2 Genome Browser such as visualization of sequence
68 variations, genomic sites for diagnostic tests, and immunogenic epitopes.

69

70 Nextstrain is a browser for real-time tracking of pathogen evolution. It hosts tools for
71 phylodynamic analysis of genomic sequences of pathogens of both endemic and
72 pandemic diseases. Nextstrain has allowed analysis of genomic sequences of
73 approximately 4,000 strains of SARS-CoV-2 and investigation of its evolution (7). As
74 more than one million SARS-CoV-2 genomic sequences have been deposited in
75 public databases, such as National Center for Biotechnology Information (NCBI)
76 GenBank (8) and Global Initiative on Sharing All Influenza Data (GISAID) (9, 10),
77 analysis of these data has far exceeded the capacity of Nextstrain. New approaches are
78 needed to accomplish this task. Therefore, we developed the Coronavirus
79 GenBrowser (CGB).

80

81 To allow timely analysis of a large number of SAR-CoV-2 genomic sequences, we first
82 solved the problem that all viral genomic sequences have to be re-aligned when
83 nucleotide sequences of new genomes become available. This is extremely time
84 consuming. With the distributed alignment system (Figure 1), we dramatically reduced
85 the total time required for the alignment. We also built the evolutionary tree on the
86 existing tree with new genomic data in order to reduce the complexity of tree
87 construction. With these modifications, hundreds of thousands of SARS-CoV-2
88 genomes can be timely analyzed with data easily shared and visualized (Figure 1).

89

90 For genomic sequence alignments, high quality SARS-CoV-2 genomic sequences were
91 obtained from the 2019nCoV database (11, 12), which is an integrated resource based
92 on GenBank, GISAID (9, 10), China National GeneBank DataBase (CNCDB) (13),
93 the Genome Warehouse (GWH) (14), and the National Microbiology Data Center
94 (NMDC, <https://nmcdc.cn/>). The sequences were aligned (15) to that of the reference
95 genome (3) and presented as distributed alignments. Genomic sequences of bat
96 coronavirus RaTG13 (16), pangolin coronavirus PCoV-GX-P1E (17), and
97 SARS-CoV-2 strains collected before 31 January, 2020 were jointly used to identify
98 ancestral alleles of SARS-CoV-2. Mutations in strains of each branch of the
99 evolutionary tree were indicated according to the principle of parsimony (18). A
100 highly effective maximum-likelihood method (TreeTime) (19) was used to determine
101 the dates of internal nodes with very minor revisions.

102

103 CGB is frequently updated. By analyzing 330,942 high quality SARS-CoV-2 genomic
104 sequences, 253,798 (recurrent) mutations were identified. With sliding window
105 analysis, 971 mutation cold spots were found with a false discovery rate (FDR)
106 corrected P -value < 0.01 (Figure S5, Supplemental excel file). The coldest spot is
107 located in ORF1a, which encodes nsp3 phosphoesterase (nucleotides 7,394 – 7,419)
108 (FDR corrected P -value = 4.28×10^{-29}). These mutation cold spots may be key
109 functional elements of SARS-CoV-2 and can potentially be used for vaccine
110 development and targets for detection.

111

112 The genome-wide mutation rate of coronaviruses has been determined to be 10^{-4} –
113 10^{-2} per nucleotide per year (20). As this range of mutation rate is too wide, we
114 decided to estimate more precisely the genome-wide mutation rate (μ) of SARS-CoV-2
115 and determined that $\mu = 6.8017 \times 10^{-4}$ per nucleotide per year (95% confidence
116 interval: 5.4262 to 8.2721×10^{-4}). The estimated μ was lower than that of other
117 coronaviruses, such as SARS-CoV (0.80 to 2.38×10^{-3} per nucleotide per year) (20)
118 and MERS-CoV (1.12×10^{-3} per nucleotide per year) (21). It was slightly lower than
119 that determined by other investigators (9.90×10^{-4} per nucleotide per year) (22).

120 Various mutation rates were found in different regions of the SARS-CoV-2 genome.

121 The mutation rate of each gene is shown in Table S1.

122

123 Similar to Nextstrain (7), the pre-analyzed genomic data of SARS-CoV-2 variants and
124 the associated metadata on CGB are shared with the general public. The size of
125 distributed alignments is 9,498 Mb for the high-quality 330,942 SARS-CoV-2 genomic

126 sequences. The tree-based data format allows the compression ratio to reach 2,499:1,
127 meaning that the size of compressed core file containing pre-analyzed genomic data
128 and associated metadata is as small as 3.80 Mb (Figure 1). This approach ensures
129 low-latency access to the data and enables fast sharing and re-analysis of a large
130 number of SARS-CoV-2 genomic variants.

131

132 To visualize, search, and filter the results of genomic analysis, both desktop standalone
133 and web-based user-interface of CGB were developed. Similar to the UCSC
134 SARS-CoV-2 Genome Browser (5) and the WashU Virus Genome Browser (6), six
135 genomic-coordinate annotated tracks were developed to show genome structure and
136 key domains, allele frequencies, sequence similarity, multi-coronavirus genome
137 alignment, and primer sets for detection of various SARS-CoV-2 strains (Figure S11).
138 To efficiently visualize the results of genomic analysis, movie-making ability was
139 implemented for painting the evolutionary tree, and only elements shown on the screen
140 and visible to the user would be painted. This design makes the visualization process
141 highly efficient, and the evolutionary tree of more than one million strains can be
142 visualized simultaneously.

143

144 CGB detects on-going positive selection based on S-shaped frequency trajectory of a
145 selected allele (Figures S18, S19). It has been shown that the SARS-CoV-2 variant
146 with G614 spike protein has a fitness advantage (23). Our analysis using CGB
147 confirmed this finding even when the G614 frequency was very low ($< 10\%$) (Figure
148 2), indicating that CGB can detect putative advantageous variants before they become
149 widely spread. GCB also predicted an increase in the frequency of ORF1a:SGF3675-
150 deletion of the B.1.1.7 lineage (24) (Figure 2), suggesting that variants with the deletion
151 may be advantageous. ORF1a:SGF3675- is the last non-synonymous mutation
152 occurred on the B.1.1.7 lineage (Figure S15). As an increase in mutation frequency
153 could be due to sampling bias and epidemiological factors (23), putative advantageous
154 variants should be closely monitored.

155

156 Using CGB, we analyzed branch-specific accelerated evolution of SARS-CoV-2 and
157 found that 246 internal branches of the evolutionary tree (FDR corrected $P < 0.05$,
158 Supplemental excel file) had significantly more mutations. All evolution-accelerated
159 variants were not found to spread significantly faster than other variants during the
160 same period of time as the majority ($168/225 = 74.6\%$) of these variants had
161 relatively fewer descendants. This observation suggests that these variants are not

162 highly contagious. It is likely that these evolution-accelerated variants were evolved
163 neutrally instead of adaptively.

164

165 CGB is also an efficient platform to investigate local and global transmission of
166 COVID-19 (Figure 3). There was an outbreak in Qingdao, China (25) after two dock
167 workers were found to have asymptomatic infections on 24 September, 2020. CGB
168 lineage tracing revealed that the sequence of a sample collected from the outer
169 packaging of cold-chain products is identical to that of the most recent common
170 ancestor of the two strains isolated from the two dock workers (Figure 3B), suggesting
171 that infection of these two individuals was cold-chain related.

172

173 CGB lineage tracing also revealed the difficulty in controlling COVID-19 pandemic.
174 There was an outbreak in Xinfadi, Beijing, China (26, 27). The sequences of two
175 isolates (Beijing/IVDC-02-06 and Beijing/BJ0617-01-Y), collected from two Xinfadi
176 cases on 11 June and 14 June, 2020, were found to be identical to the sequence of the
177 variant (CGB4268.5142) (Figure 3C) dated 6 March, 2020 (95% CI: 28 February – 17
178 March, 2020). This variant was found to spread to Taiwan, India, Czech Republic,
179 England, Denmark, and Colombia and caused the outbreak in Beijing three months
180 later. It was also detected in the United States (NY-Wadsworth-21013812-01/2020)
181 on 18 December, 2020. These two Xinfadi strains were found to evolve significantly
182 slowly ($P = 0.0043$ and 0.0051 , respectively) because no mutations were detected
183 between March and June 2020, consistent with the hypothesis of cold-chain related
184 transmission (27).

185

186 CGB is a powerful tool for identification of global and regional transmission of
187 mutation-dormant strains as it can determine whether the mutation rate of a specific
188 strain is significantly lower than the average mutation rate of the entire set of strains.
189 This lineage-specific reduced mutation rate could be due to a long period of dormancy
190 caused by the yet to be confirmed cold-chain preservation or other reasons. Among the
191 330,942 SARS-CoV-2 strains, 7,534 strains were found to evolve significantly slowly
192 (FDR corrected $P = 9.68 \times 10^{-9} \sim 0.04$, Supplemental excel file) and did not mutate
193 in 100 days. In addition, three closely related variants were found to have no
194 mutations in 3 months before their descendants were found to widely spread in
195 Europe in late July 2020 (Figure 4A). Another variant with C3037T, A23403G
196 (S:D614G), C14408T (ORF1b:P314L), and C241T, emerged in early December 2019.
197 This variant had 671 identical descendants spreading in six continents between
198 February 2020 and January 2021, indicating that it has no additional mutations in one

199 year (Figure 4B). The most (582/671 = 86.7%) of the descendants were found in
200 Europe and North America. These results (Figures 3 and 4) suggest that the
201 transmission of mutation-dormant variants also plays a major role in COVID-19
202 pandemic.

203

204 All timely-updated data are freely available at <https://bigd.big.ac.cn/ncov/apis/>. The
205 desktop standalone version (Figure S10A) provides the full function of CGB and has a
206 plug-in module for the eGPS software (<http://www.egps-software.net/>) (28). Although
207 the web-based CGB is a simplified version (<https://www.biosino.org/genbrowser/> and
208 <https://bigd.big.ac.cn/genbrowser/>) and designed mainly for educational purpose, it
209 provides a convenient way to access the data via a web browser, such as Google
210 Chrome, Firefox, and Safari (Figure S10B, C). The web-based CGB package can be
211 downloaded and reinstalled on any websites. Nine language versions (Chinese, English,
212 German, Japanese, French, Italian, Portuguese, Russian, and Spanish) are available.

213

214

215 **References**

- 216 1. Zhu, N, Zhang, D, Wang, W, *et al.* A novel coronavirus from patients with pneumonia in China,
217 2019. *N Engl J Med.* 2020; **382**(8): 727-33.
- 218 2. Lu, R, Zhao, X, Li, J, *et al.* Genomic characterisation and epidemiology of 2019 novel
219 coronavirus: implications for virus origins and receptor binding. *Lancet.* 2020; **395**(10224):
220 565-74.
- 221 3. Wu, F, Zhao, S, Yu, B, *et al.* A new coronavirus associated with human respiratory disease in
222 China. *Nature.* 2020; **579**: 265-9.
- 223 4. Portelli, S, Olshansky, M, Rodrigues, CHM, *et al.* Exploring the structural distribution of genetic
224 variation in SARS-CoV-2 with the COVID-3D online resource. *Nat Genet.* 2020; **52**(10):
225 999-1001.
- 226 5. Fernandes, JD, Hinrichs, AS, Clawson, H, *et al.* The UCSC SARS-CoV-2 Genome Browser. *Nat*
227 *Genet.* 2020; **52**: 986-91.
- 228 6. Flynn, JA, Purushotham, D, Choudhary, MNK, *et al.* Exploring the coronavirus pandemic with
229 the WashU Virus Genome Browser. *Nat Genet.* 2020; **52**: 986-1001.
- 230 7. Hadfield, J, Megill, C, Bell, SM, *et al.* Nextstrain: real-time tracking of pathogen evolution.
231 *Bioinformatics.* 2018; **34**(23): 4121-3.
- 232 8. Sayers, EW, Beck, J, Bolton, EE, *et al.* Database resources of the National Center for
233 Biotechnology Information. *Nucleic Acids Res.* 2021; **49**: D10-D7.
- 234 9. Shu, YL, McCauley, J. GISAID: Global initiative on sharing all influenza data - from vision to
235 reality. *Eurosurveillance.* 2017; **22**(13): 2-4.
- 236 10. Elbe, S, Buckland-Merrett, G. Data, disease and diplomacy: GISAID's innovative contribution to
237 global health. *Glob Chall.* 2017; **1**(1): 33-46.
- 238 11. Zhao, W-M, Song, S-H, Chen, M-L, *et al.* The 2019 novel coronavirus resource. *Hereditas*

- 239 (Beijing). 2020; **42**(2): 212-21.
- 240 12. Gong, Z, Zhu, J-W, Li, C-P, *et al.* An online coronavirus analysis platform from the National
241 Genomics Data Center. *Zool Res.* 2020; **41**(6): 705-8.
- 242 13. Chen, F, You, L, Yang, F, *et al.* CNGBdb: China National GeneBank DataBase. *Hereditas*
243 (Beijing). 2020; **42**(8): 799-809.
- 244 14. Zhang, Z, Zhao, W, Xiao, J, *et al.* Database resources of the National Genomics Data Center in
245 2020. *Nucleic Acids Res.* 2020; **48**(D1): D24-D33.
- 246 15. Katoh, K, Standley, DM. MAFFT multiple sequence alignment software version 7: Improvements
247 in performance and usability. *Mol Biol Evol.* 2013; **30**(4): 772-80.
- 248 16. Zhou, P, Yang, X-L, Wang, X-G, *et al.* A pneumonia outbreak associated with a new coronavirus
249 of probable bat origin. *Nature.* 2020; **579**: 270-3.
- 250 17. Lam, TT-Y, Jia, N, Zhang, Y-W, *et al.* Identifying SARS-CoV-2-related coronaviruses in Malayan
251 pangolins. *Nature.* 2020; **583**(7815): 282-5.
- 252 18. Hartigan, JA. Minimum mutation fits to a given tree. *Biometrics.* 1973; **29**(1): 53-65.
- 253 19. Sagulenko, P, Puller, V, Neher, RA. TreeTime: Maximum-likelihood phylodynamic analysis. *Virus*
254 *Evol.* 2018; **4**: vex042.
- 255 20. Zhao, ZM, Li, HP, Wu, XZ, *et al.* Moderate mutation rate in the SARS coronavirus genome and
256 its implications. *BMC Evol Biol.* 2004; **4**: 21.
- 257 21. Cotten, M, Watson, SJ, Zumla, AI, *et al.* Spread, circulation, and evolution of the Middle East
258 respiratory syndrome coronavirus. *Mbio.* 2014; **5**(1): e01062-13.
- 259 22. Nie, Q, Li, X, Chen, W, *et al.* Phylogenetic and phylodynamic analyses of SARS-CoV-2. *Virus*
260 *Res.* 2020; **287**: 198098.
- 261 23. Korber, B, Fischer, WM, Gnanakaran, S, *et al.* Tracking changes in SARS-CoV-2 Spike: Evidence
262 that D614G increases infectivity of the COVID-19 virus. *Cell.* 2020; **182**(4): 812-27.
- 263 24. Rambaut, A, Loman, N, Pybus, O, *et al.* Preliminary genomic characterisation of an emergent
264 SARS-CoV-2 lineage in the UK defined by a novel set of spike mutations. *virological.org.* 2020:
265 [https://virological.org/t/preliminary-genomic-characterisation-of-an-emergent-sars-cov-2-lineage-](https://virological.org/t/preliminary-genomic-characterisation-of-an-emergent-sars-cov-2-lineage-in-the-uk-defined-by-a-novel-set-of-spike-mutations/563)
266 [in-the-uk-defined-by-a-novel-set-of-spike-mutations/563](https://virological.org/t/preliminary-genomic-characterisation-of-an-emergent-sars-cov-2-lineage-in-the-uk-defined-by-a-novel-set-of-spike-mutations/563).
- 267 25. Xing, Y, Wong, GWK, Ni, W, *et al.* Rapid response to an outbreak in Qingdao, China. *N Engl J*
268 *Med.* 2020; **383**: e129.
- 269 26. Zhang, Y, Pan, Y, Zhao, X, *et al.* Genomic characterization of SARS-CoV-2 identified in a
270 reemerging COVID-19 outbreak in Beijing's Xinfadi market in 2020. *Biosaf Health.* 2020; **2**:
271 202-5.
- 272 27. Pang, X, Ren, L, Wu, S, *et al.* Cold-chain food contamination as the possible origin of Covid-19
273 resurgence in Beijing. *Natl Sci Rev.* 2020; **7**: 1861-4.
- 274 28. Yu, D, Dong, L, Yan, F, *et al.* eGPS 1.0: comprehensive software for multi-omic and evolutionary
275 analyses. *Natl Sci Rev.* 2019; **6**: 867-9.
- 276
- 277
- 278

279 **Acknowledgments**

280 We thank Ya-Ping Zhang for providing valuable advices and encouragement and the
281 researchers who generated and deposited sequence data of SARS-CoV-2 in GISAID,
282 GenBank, CNGBdb, GWH, and NMDC making this study possible.

283

284 **Funding**

285 This work was supported by a grant from the National Key Research and Development
286 Project (No. 2020YFC0847000).

287

288 **Members of the language translation team**

289 German: Ning He⁶, Jing Lv⁶, Ting Peng⁶

290 Italian: Ting Zhou⁶, Nan Yang⁶, Siyi Hou⁶

291 Portuguese: Huang Li⁶, Jingxuan Yan⁶, Chenglin Zhu⁶, Wenjing Liu⁶

292 Russian: Yuhong Guan⁶, Huanxiao Song⁶

293 Spanish: Qin Zhou⁶, Han Gao⁶, Jinglan He⁶, Tiantian Li⁶, Ruiwen Fei⁶, Shumei Zhang⁶

294 French: Yuyuan Guo⁶

295

296 **Author contributions:** YHP, GQZ, WZ, and HL designed the study; DY, XY, BT,
297 YHP, JY, JZ, GD, ZQH, HM, LD, GQZ, WZ, and HL wrote the code and developed
298 CGB; DY, XY, BT, YHP, JY, JZ, GD, ZQH, WH, XS, GQZ, WZ, and HL acquired,
299 analyzed, and interpreted the data; LM, MZ, YC, GD, TJ, and CL integrated and
300 curated the source data; members of the language translation team translated CGB
301 into multiple languages; DY, YHP, JY, JZ, GQZ, WZ, and HL wrote the manuscript.
302 All authors have approved the submitted version.

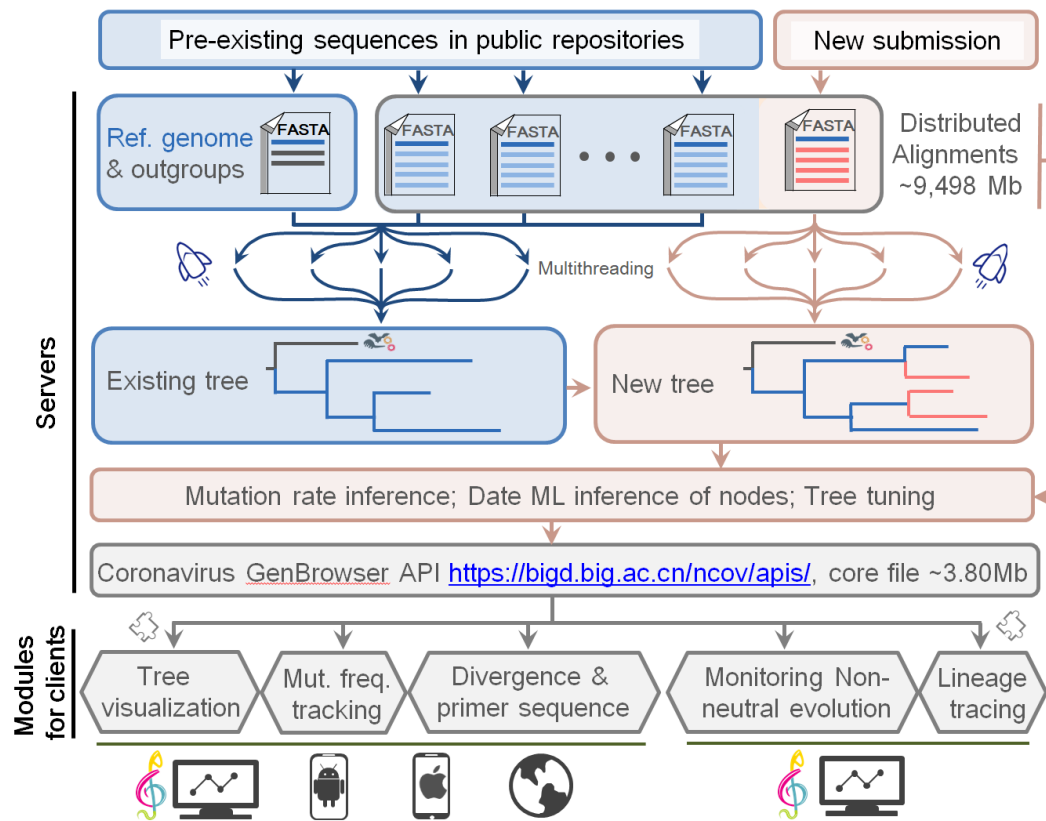
303

304 **Competing interests:** The authors declare no competing interests.

305

306 **Data and materials availability:** The coronavirus genomic sequences used in this
307 study were obtained from the 2019nCoV database (11). Timely updated data of
308 genomic sequences of SARS-CoV-2 variants are shared with the general public at
309 <https://bigd.big.ac.cn/ncov/apis/>. The free software (desktop and web-based versions)
310 can be downloaded from <http://www.egps-software.net/>.

311



312

313

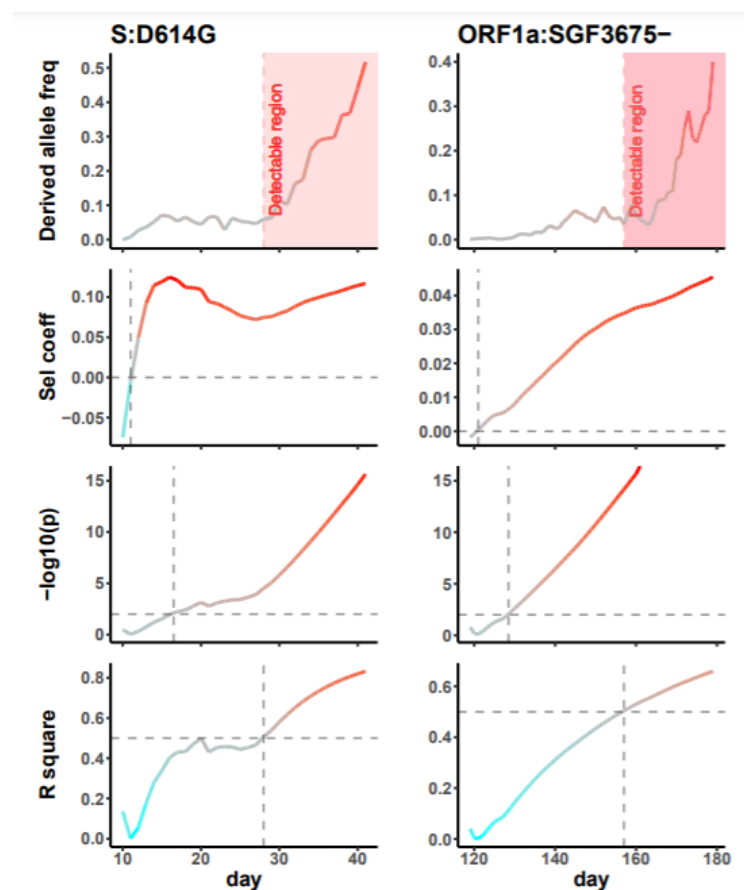
314 **Figure 1. Timely updates of SARS-CoV-2 genomic data and visualization**

315 **framework of Coronavirus GenBrowser.** The core file includes the pre-analyzed

316 genomic data of SARS-CoV-2 variants and the associated metadata. All

317 timely-updated data can be freely accessed at <https://bigd.big.ac.cn/ncov/apis/>.

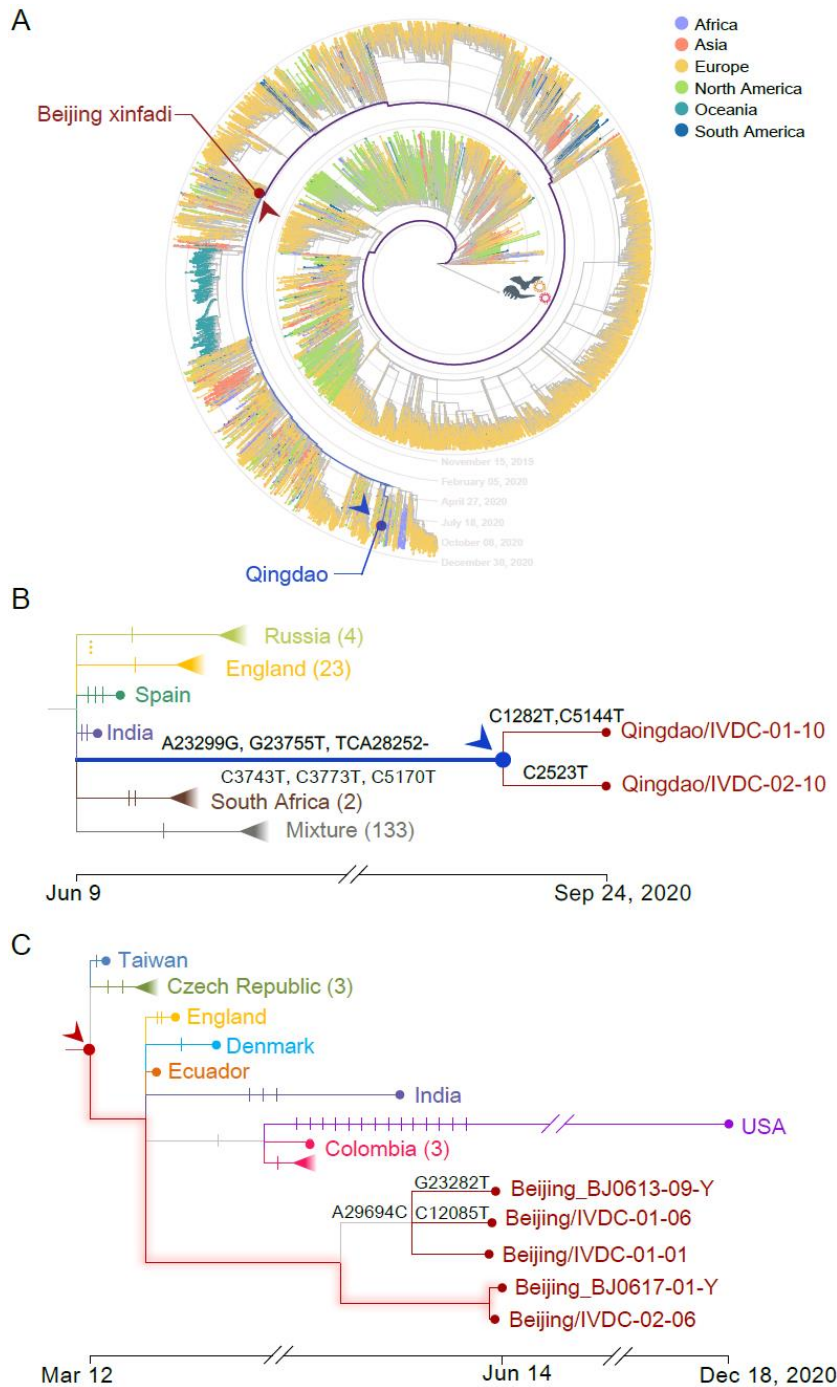
318



319

320 **Figure 2. Putative advantageous variants of SARS-CoV-2.** The x -axis displays
321 number of days since the first appearance of derived allele in the global viral population.
322 Predicted adaptation is marked in pink. Dashed gray crossings denote top right corners
323 with a positive selection coefficient, $p < 0.01$, and $R^2 > 50\%$.

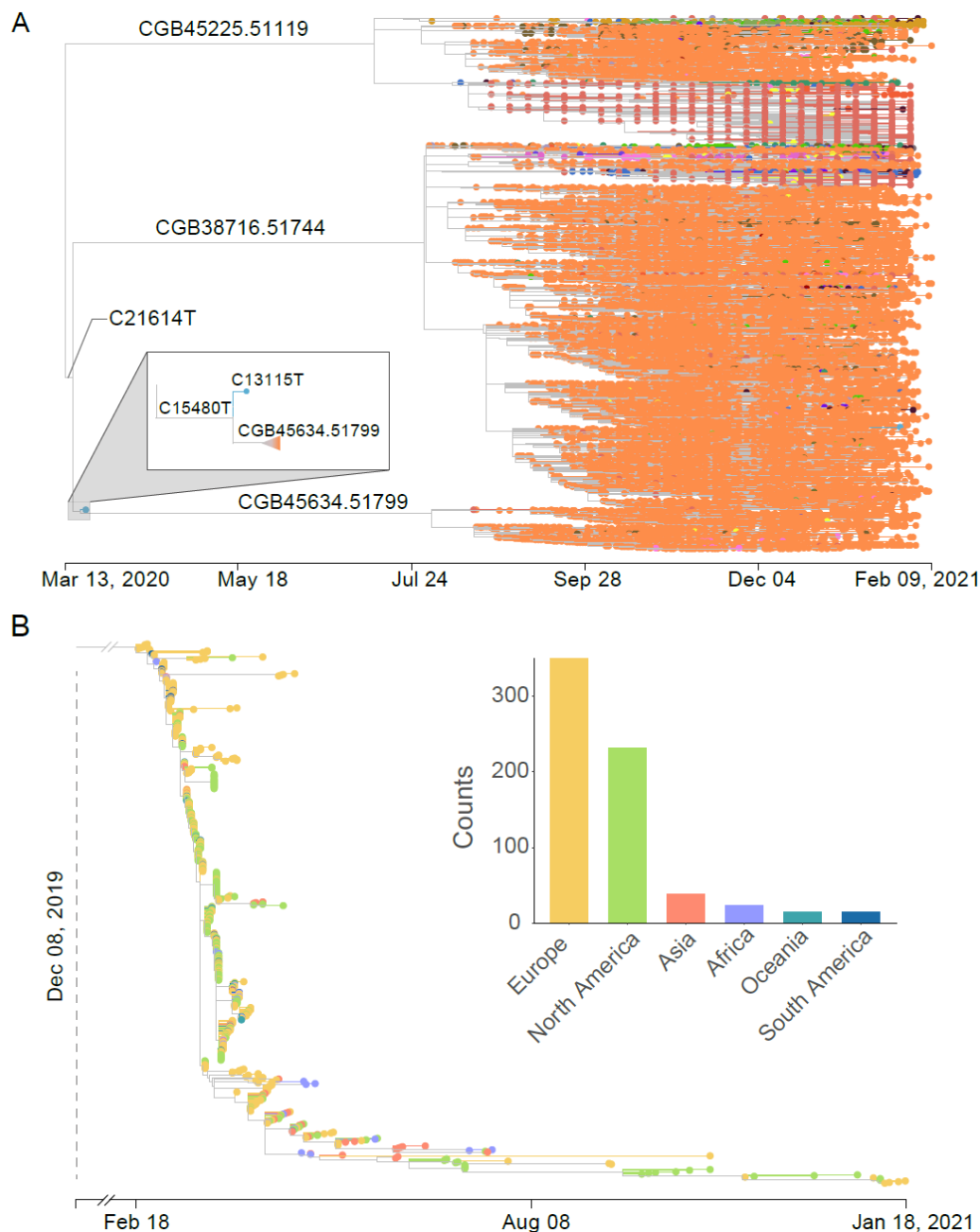
324



325
326 **Figure 3. Global and zoom-in views of lineages associated with Qingdao and**
327 **Beijing outbreaks.**

328 A) The lineages of traced targets are shown in blue and dark red lines.
329 B) Qingdao/IVDC-01-10 and Qingdao/IVDC-02-10 were the two SARS-CoV-2
330 strains collected on 24 September, 2020 from two dock workers in Qingdao,
331 China. The query strain (env/Qingdao/IVDC-011-10) was found on an outer
332 packaging of cold-chain products on 7 October, 2020. The environmental strain,
333 marked with a blue solid circle with an arrowhead, was found to be identical to the
334 most recent common ancestor of the two strains from the two dock workers. Each

335 notch of the branches represents a mutation. Mutations of the Qingdao strains are
336 indicated.
337 C) The ancestral viral strain found in early March 2020 is marked with a dark-red
338 solid circle and an arrowhead. This strain is identical to the two strains
339 (Beijing/IVDC-02-06 and Beijing/BJ0617-01-Y) collected from two Xinfadi cases
340 on 11 June and 14 June, 2020. The branches with no mutations are highlighted.



341

342 **Figure 4. Transmission of mutation-dormant SARS-CoV-2 variants.**

343 A) Tree visualization of strains of three related lineages with reduced evolutionary rate
 344 among 330,942 SARS-CoV-2 genomic sequences. There were no mutations in the
 345 strains of three long branches (CGB45225.51119, CGB38716.51744, and
 346 CGB45634.51799) in 118, 112, and 135 days, respectively. The numbers of their
 347 descendants were 9,815, 28,126, and 3,015, respectively. The three strains had
 348 spread to more than 10 European countries, and most descendants were found in
 349 Denmark (red tip) and UK (orange tip). Variants of these three lineages shared 13
 350 mutations (G204T, C241T, T445C, C3037T, C6286T, C14408T, G21255C,

351 C22227T, A23403G, C26801G, C27944T, C28932T, and G29645T) but had two
352 unique mutations (C21614T and C15480T).
353 B) Tree visualization of 671 strains with no mutations between 8 December, 2019 and
354 18 January, 2021. These strains are the descendants of a variant with four
355 mutations (C3037T, A23403G, C14408T, and C241T) emerged before 8
356 December, 2019. Among the four mutations, A23403G (S:D614G) and C14408T
357 (ORF1b:P314L) are non-synonymous. The geographic distribution of the
358 descendants is shown in the subpanel. Their siblings with additional mutations
359 (16,442 strains) are not shown in the evolutionary tree. The CGB ID of their
360 MRCA is CGB121.124.