

# Comparing non-communicable disease risk factors between Asian migrants and native Koreans: an observational study

Heng Piao<sup>1,2</sup>, Jae Moon Yun<sup>2</sup>, Aesun Shin<sup>3,4</sup>, Daehee Kang<sup>1,3,4</sup>, Belong Cho<sup>2,5\*</sup>

*<sup>1</sup>Department of Cancer Epidemiology and Prevention, Henan Cancer Hospital, Affiliate Cancer Hospital of Zhengzhou University, Zhengzhou 450003, China*

*<sup>2</sup>Department of Family Medicine, Seoul National University Hospital, Seoul National University College of Medicine, Seoul 03080, Republic of Korea*

*<sup>3</sup>Department of Preventive Medicine, Seoul National University College of Medicine, Seoul 03080, Republic of Korea*

*<sup>4</sup>Department of Innovative Medical Sciences, Seoul National University Graduate School, Seoul 03080, Republic of Korea*

*<sup>5</sup>Health Promotion Center, Seoul National University Hospital, Seoul 03080, Republic of Korea*

## **\*Correspondence to:**

Belong Cho, M.D., Ph.D.

E-mail: [belong@snu.ac.kr](mailto:belong@snu.ac.kr)

Tel: 82-2-2072-2195, 82-10-9865-2195

## ABSTRACT

**OBJECTIVES** To investigate and compare non-communicable disease risk factors among Asian migrants in Korea, the Korean population, and the general population of their respective home countries.

**DESIGN** A cross-sectional (2015) and longitudinal (2009–2015) observational study.

**SETTING** Population-wide analysis using the National Health Information Database of the Korean National Health Insurance Service for 2009–2015.

**PARTICIPANTS** Asian migrants (n=987,214) in Korea and Korean nationals (n=1,693,281) aged  $\geq 20$  years.

**MAIN OUTCOME MEASURES** The prevalence of non-communicable disease risk factors, such as current smoking, physical inactivity, obesity, diabetes, hypertension, and hypercholesterolemia in 2015. Secondary outcomes were the incidence of type 2 diabetes and hypertension from 2010 to 2015.

**RESULTS** Among participants aged  $\geq 20$  years, the age-adjusted prevalence of current smokers was higher among Chinese migrant men (52.8%) than among Korean men (39.9%) ( $P < 0.001$ ) and among other Asian migrant women (6.4%) than among Korean women (3.8%) ( $P < 0.001$ ). The age-adjusted prevalence of obesity was higher in Chinese, Filipino, and other Asian migrant women (25.6%, 30.9% and 35.5%, respectively) than in Korean women (23.2%) ( $P < 0.001$ ;  $P = 0.002$ ;  $P < 0.001$ , respectively). Among participants aged 20–49 years, the age-adjusted prevalence of diabetes was higher in Filipino migrant women than in Korean women (2.6% and 1.8%, respectively;  $P = 0.009$ ). The age-adjusted prevalence of hypertension was higher in Filipino migrant women than in Korean women (7.7% and 4.2%, respectively;  $P < 0.001$ ). In multivariate analyses, the OR of developing type 2 diabetes was 1.32 (95% CI; 1.11 to 1.57) among Vietnamese migrant men compared with Korean men aged 20–39 years. The ORs of developing hypertension were 1.49 (95% CI; 1.05 to 2.11) and 2.22 (95% CI; 1.17 to 4.19) among Filipino migrant women compared with Korean women aged 20–39 years and more than 40 years, respectively.

**CONCLUSIONS** The identified relationships between Asian migrant nationality and cardiovascular risk factors provide basic evidence for targeting high-risk groups and improving policy development in Korea.

## SUMMARY BOX

### WHAT IS ALREADY KNOWN ON THIS TOPIC

- According to the healthy migrant effect, international migrants—particularly recent migrants—are healthier than the general population of the host country.
- Jewish migrants to Israel have health disadvantages compared with Israeli natives.
- Whether a health advantage exists regarding non-communicable disease risk factors among international migrants, targeting those born in Asian countries and moving to another high-income Asian country such as the Republic of Korea, is unclear.

### WHAT THIS STUDY ADDS

- In 2015, among participants aged  $\geq 20$  years, the age-adjusted prevalence of current smokers among Chinese and other Asian migrant men was higher than that among Korean men; the age-adjusted prevalence of obesity among Chinese, Filipino, and other Asian migrant women was higher than that among Korean women.
- From 2009 to 2015, in multivariate analyses, after adjusting for covariates, among participants aged 20–39 years, Vietnamese migrant men were more likely to have type 2 diabetes than Korean men; among participants aged  $\geq 20$  years, Filipino migrant women were more likely to have hypertension than Korean women.
- The pursuit of better economic, educational, or even social and living environmental needs, combined with the self-selection of migrants as well as the immigration policy of the Korean government may explain the healthy migration advantage concerning diabetes and hypertension among the majority of Asian migrants in Korea.

## Introduction

Recent systematic reviews and meta-analyses of migrant health have supported the healthy migration hypothesis—that international migrants have health advantages.<sup>1-2</sup> This healthy migration effect suggests that international, and particularly new, migrants are healthier than the overall population of the host country.<sup>2-4</sup> The healthy migration effect can either be attributed to self-selection or immigration policies;<sup>3-6</sup> nevertheless, the healthy migrant effect is inversely associated with the duration of residence in the host country.<sup>2,7,8</sup> Moreover, among international migrants in Europe, North America, and Australia, non-communicable diseases—such as cardiovascular disease and cancer—may vary, based on country of origin and destination, and with the length of stay in the host country.<sup>9,10</sup> However, in Israel, a sick migration effect is shown among international migrants within the initial 20 years of residence since commencement, implying that international migrants have health disadvantages, compared with the native population in the host country.<sup>11</sup>

Among East Asians, a high BMI correlated with an excess risk of death from cardiovascular diseases, cancer, and other causes; conversely, Indians and Bangladeshis with high BMI did not show the same correlation.<sup>12</sup> Moreover, the South Asian migrant population shows an excess risk of developing diabetes compared with the European population, but onset is still 5-10 years earlier at lower BMIs.<sup>13</sup> Moreover, South Asians are more likely to have diabetes and cardiovascular diseases than other ethnic groups, under the influence of socioeconomic situation, region of residence, and migration.<sup>14</sup> In the Republic of Korea, the association between BMI and risk of death varies, according to age, sex, smoking history, and cause of death; a BMI of  $\geq 25$  can increase mortality risk among Koreans.<sup>15</sup> Compared with Korean natives, the prevalence of obesity in Asian migrants showed increasing trends; compared to Korean native women, the prevalence of obesity is becoming higher in Asian migrant women since 2014.<sup>16,17</sup> However, the prevalence of diabetes of Asian migrants showed stable trends; even the prevalence of hypertension of Asian migrants showed a sex-specific decreasing trend from 2009 to 2015.<sup>16</sup>

The state of health of international migrants is needed to assess and manage from a global perspective and to coordinate among core health sectors of nation-states.<sup>18</sup> However, so far, few previous studies have involved international migrants moving within- and between-Asian countries, especially those who were born in Asian countries and moving to another high-income East Asian country. Moreover, worldwide, little is known about studies on international migration to validate and interpret the healthy migration effect, using high-quality health check-up data from the National Health Insurance Service (NHIS), which also include lifestyle factors in the same research setting. Furthermore, it is unclear whether a health advantage of non-communicable disease risk factors such as obesity, diabetes, and hypertension exists among Asian migrants of different nationalities in Korea. Moreover, it is not clear how the development of type 2 diabetes (T2D) and hypertension is changing according to nationality. This study aimed to investigate differences in the prevalence of non-communicable disease risk factors between Asian migrants of different nationalities and the Korean population, to evaluate whether there is a healthy migration effect in Korea. Second, we examined differences in the development of T2D and hypertension between Asian migrants and the Korean population, using nationwide data. Finally, we investigated differences in obesity, diabetes, and elevated blood pressure among Chinese, Filipino, and Vietnamese migrants in Korea, as compared with the general population of their home countries. We hypothesized that Asian migrants of different nationalities have a greater health advantage regarding non-communicable disease risk factors than Koreans, based on our previous study.<sup>16</sup>

## Methods

### Study population

We conducted a retrospective population-based analysis of data collected during a longitudinal study. The study population constituted Asian migrants and the general Korean population aged  $\geq 20$  years who underwent health check-ups during 2009–2015 using the National Health Information Database (NHID) established by the Korean NHIS.<sup>16 19</sup> The NHID included eligibility data, National Health check-up data, healthcare utilization, long-term care insurance, and health care provider information.<sup>19</sup>

Namely, concerning the eligibility database, the information of income-based insurance contributions, demographic variables, and date of death were included.<sup>19</sup> Moreover, the NHID is suitable for population-based studies aimed at primary and secondary prevention of chronic diseases, including diabetes and hypertension.<sup>19-22</sup> The health check-up data for Asian migrants could be extracted from customized NHID data and represented the majority of Asian migrants who underwent annual voluntary health check-ups in Korea.<sup>16 19</sup> Moreover, the health check-up data of the Korean population were obtained from the 1 million-sample cohort of the NHID, which is a random sample representing 2.2% of the Korean-born population, representative of the nationwide population of Korea.<sup>16 23</sup> Notably, considering that the NHID is more extensive than it seems, the NHIS conducted systematic stratified random sampling with 2.2% within each stratum for the construction of the 1 million-sample cohort, of which the target variable for sampling was the individual's total annual medical expenses.<sup>23</sup> Among 2,691,010 participants aged  $\geq 20$  years who underwent health check-ups during 2009–2015, we excluded 350 lacking information on blood pressure and fasting blood glucose and total cholesterol levels. Furthermore, 10,165 individuals with missing information on smoking status, alcohol use, and physical activity were excluded. Finally, the study population of 2,680,495 participants included 987,214 Asian migrants and 1,693,281 Korean nationals.<sup>16</sup> From 2009 to 2015, the numbers of Asian migrants by year were 93,845, 113,414, 129,827, 132,226, 142,275, 175,082, and 200,545, respectively. Similarly, the numbers of Koreans by year were 208,772, 231,881, 236,751, 244,443, 243,592, 261,680, and 266,162, respectively.<sup>16</sup> After excluding participants with diabetes and hypertension at the first health check-up (2009–2014), the numbers of participants who underwent health check-ups more than once, with information on the presence or absence of diabetes and hypertension at the last health check-up, were 505,342 and 431,433, respectively. The numbers of participants newly diagnosed with T2D and hypertension between the first and last health check-up were 22,284 and 48,007, respectively.<sup>17</sup>

Here, Asian migrants originated from China, Japan, Vietnam, the Philippines, Indonesia, Thailand, Uzbekistan, Sri Lanka, Mongolia, Bangladesh, Pakistan, and India. For the study, Asian migrants were divided into Chinese, Japanese, Filipino, Vietnamese, and other Asian migrants to ensure sufficient

samples after age standardization in 2015. Moreover, for the accuracy of age standardization, migrants from Thailand, Uzbekistan, Sri Lanka, Mongolia, Bangladesh, Pakistan, Indonesia, and India were labelled “other Asian migrants” when the data were derived from the NHIS. For example, there were not enough samples for several positive indicators of non-communicable disease risk factors among Indonesian migrants aged  $\geq 60$  years. Therefore, migrants from Thailand, Uzbekistan, Sri Lanka, Mongolia, Bangladesh, Pakistan, Indonesia, and India were combined as “other Asian migrants” collectively, as age standardization resulted in insufficient data on specific positive outcome indicators.<sup>17</sup> Furthermore, regarding nationality, there were also insufficient samples among Asian migrants aged 60–69, 70–79, and 80+ years for age standardization by sex for several positive indicators of non-communicable disease risk factors, especially in Filipino, Vietnamese, and other Asian migrants. Therefore, the study population was divided into 20–29, 30–39, 40–49, 50–59, and 60+ years age groups to conduct age standardization for non-communicable disease risk factors among Asian migrants, according to nationality, compared with Koreans.

The Institutional Review Board of Seoul National University Hospital approved the study on August 21, 2018 (IRB number: E-1808-093-966). Moreover, per IRB's criteria, the need for obtaining informed participant consent was waived in our study.

## **Measurements**

Age, sex, and monthly insurance premiums are included in the data collected by the NHIS, and insurance premiums are determined by income level in Korea.<sup>16 22</sup> In our study, monthly insurance premiums were used to indicate economic status (first, second, third, and fourth quartiles), which was regarded as a vital statistic that represented income level (low, middle-low, high-middle, and high, respectively). The health check-up participation data were obtained from the NHIS health check-up database. According to the information obtained from the health questionnaires, participants were categorized as non-smokers, ex-smokers, or current smokers; alcohol drinkers (alcohol consumption  $\geq 1$  time/week) or non-drinkers (alcohol consumption  $< 1$  time/week); physically active (physical activity  $\geq 3$



times/week) or inactive (physical activity < 3 times/week). Measurements of weight, height, and blood pressure were included in the physical examinations, and the body mass index (BMI) was calculated as the weight (kg) divided by the height (m<sup>2</sup>). Obesity was defined as a BMI  $\geq 25$  kg/m<sup>2</sup>. Elevated blood pressure (hypertension) was defined as blood pressure  $\geq 140/90$  mmHg, diagnosis of hypertension, or prescription of antihypertensive drugs in the health questionnaires. Furthermore, total cholesterol and fasting blood glucose were included in the laboratory tests. Hypercholesterolemia was defined as a total cholesterol level  $\geq 240$  mg/dL. Diabetes was defined as a fasting blood glucose level  $\geq 126$  mg/dL, previous diabetes diagnosis, or prescription of antidiabetic drugs in the health questionnaires.<sup>17</sup>

The primary study outcome was the prevalence of non-communicable disease risk factors, such as current smokers, physical inactivity, obesity, diabetes, hypertension, and hypercholesterolemia in 2015.<sup>24-28</sup> The secondary study outcomes were the incidence of T2D and hypertension from 2010 to 2015. We excluded participants with diabetes and hypertension at the first health check-up to ascertain incident T2D and hypertension from 2009 to 2014. Incident T2D and hypertension were determined for each participant between the first and last health check-ups.<sup>17</sup>

### **Statistical analysis**

We conducted several sets of analyses. The research design and statistical analyses are shown, according to this and previous studies (Supplementary Figure A1). Prevalence was defined as the number of participants with cases in a given year per number of participants in the population who underwent a health check-up during this period. Incidence was defined as the number of participants with new cases during the specified period per number of participants in the population who underwent health check-ups more than once during this period. First, the age-adjusted prevalence of lifestyle factors, socioeconomic status, and health status among Asian migrants and the native population according to nationality was calculated. The age-adjusted prevalence was calculated separately by sex using direct age standardization. Regarding the age-adjusted prevalence of lifestyle factors, socioeconomic status, and health status among Chinese, Japanese, Filipino, Vietnamese, and other Asian migrants compared

with Koreans, age standardization was conducted using 10-year age bands, in which the world standard population was used as the standard population.<sup>29</sup> However, to compare the age-adjusted prevalence of diabetes among Japanese migrants with that of Koreans, we selected Japanese migrant and Korean populations aged  $\geq 30$  years, as there were insufficient samples among Japanese migrants aged 20–29 years for age standardization in diabetes. Moreover, we selected a study population aged 20–59 years for age standardization for current smokers because there were insufficient samples in this category among Filipino and Vietnamese migrants aged  $\geq 60$  years. Furthermore, considering the limitation of overall insufficient samples among Asian migrants of different nationalities aged 50–59, 60–69, 70–79, and 80+ years, we calculated the age-specific and age-adjusted prevalence of lifestyle factors, socioeconomic status, and health status among Chinese, Filipino, Vietnamese, and other Asian migrants compared with Koreans separately by sex, using 10-year age bands for the ages 20–49 years. Therefore, we conducted direct age standardization in migrants aged 20–29, 30–39, and 40–49 years, in which the world standard population was used as the standard population.<sup>29</sup> Regarding direct age standardization for the ages 20–49 years, Japanese migrants aged 20–29 years were excluded owing to insufficient data. For these analyses, we also examined age-adjusted prevalence ratios (aPRs) and 95% log-normal confidence intervals (CIs).<sup>30</sup>

Second, to examine the differences in the development of T2D and hypertension between Asian migrants according to nationality and the native Korean population, multivariable logistic regression analyses were conducted and adjusted for the following covariates: age (continuous, years), sex, economic status, BMI (continuous,  $\text{kg}/\text{m}^2$ ), smoking status, alcohol use, and physical activity. For these analyses, adjusted odds ratios (aORs) and 95% CIs of incident T2D and hypertension determinants were examined between the first and last health check-ups. Further, we conducted multivariable logistic regression analyses stratified by age (20–39 and  $\geq 40$  years) and sex.<sup>17</sup>

Finally, we examined differences in the age-adjusted prevalence of obesity, elevated blood pressure, and diabetes among Chinese, Filipino, and Vietnamese migrants, compared with the general population

of their respective home countries.<sup>17</sup> Age standardization was conducted using 10-year age bands, and the world standard population was used as the standard population.<sup>29</sup> However, Japanese migrants were excluded because of insufficient data in Japanese migrants aged 20–29 years. Health data among general populations in China, the Philippines, and Vietnam were obtained from the Global Health Observatory data repository of the World Health Organization. Data are available from <http://apps.who.int/gho/data/node.main.A867?lang=en/>, which is of same year for comparison with Asian migrants, according to nationalities.

All analyses were performed using SAS version 9.3 (SAS Institute Inc., Cary, NC, USA), and a *P* value < 0.05 was considered statistically significant.

## Results

Table 1 shows the characteristics of Asian migrants of different nationalities and Koreans in 2015. The mean (SD) age among Korean natives and Chinese, Japanese, Filipino, Vietnamese, and other Asian migrants was 49.4 (14.0), 46.4 (11.4), 47.4 (9.2), 32.5 (6.0), 30.3 (9.2), 30.3 (6.3) years, respectively, in 2015. The number of women among Korean natives and Chinese, Japanese, Filipino, Vietnamese, and other Asian migrants was 124,850 (46.9%), 47,808 (47.2%), 3,171 (71.3%), 2,347 (19.7%), 5,600 (29.1%) years, respectively.

In 2015, the age-adjusted prevalence of current smokers was higher in Chinese migrant men (52.8%) than in Korean men (39.9%) (*P* < 0.001; Table 2A). Moreover, the age-adjusted prevalence of current smokers was higher in other Asian migrant women (6.4%) than in Korean women (3.8%) (*P* < 0.001; Table 2B). The age-adjusted prevalence of obesity in Chinese migrant women (25.6%), in Filipino migrant women (30.9%), and other Asian migrant women (35.5%) was higher than that in Korean women (23.2%) (*P* < 0.001, *P* = 0.002, *P* < 0.001, respectively; Table 2B). Additionally, the age-adjusted prevalence of hypercholesterolemia in Japanese and Vietnamese migrant men (14.4% and 12.9%, respectively) was higher than that in Korean men (10.2%) (*P* = 0.004, *P* = 0.016, respectively; Table 2A).

Furthermore, the age-adjusted prevalence of hypercholesterolemia in Japanese migrant women (13.8%), and in Vietnamese migrant women (12.9%) was higher than that in Korean women (9.5%) ( $P < 0.001$ ,  $P < 0.001$ , respectively; Table 2B).

In 2015, among participants aged 30–39 years, the prevalence of diabetes in Chinese migrant men (4.1%) was higher than that in Korean men (3.5%) (PR, 1.20; 95% CI, 1.07 to 1.33). Among participants 40–49 years old, the prevalence of hypertension in Chinese migrant women (10.7%) was higher than that in Korean women (9.7%) (PR, 1.10; 95% CI, 1.04 to 1.17) (Supplementary Table A1 and A2).

In 2015, among participants aged 20–49 years old, the age-adjusted prevalence of obesity in Filipino migrant women (25.7%) was higher than that in Korean women (16.9%) (aPR1, 1.52; 95% CI, 1.38 to 1.68;  $P < 0.001$ ). The age-adjusted prevalence of diabetes in Filipino migrant women (2.6%) was higher than that in Korean women (1.8%) (aPR, 1.49; 95% CI, 1.11 to 2.02;  $P = 0.009$ ). The age-adjusted prevalence of hypertension in Filipino migrant women (7.7%) was higher than that in Korean women (4.2%) (aPR, 1.81; 95% CI, 1.48 to 2.21;  $P < 0.001$ ) (Figure 1 and Supplementary Table B2).

From 2009 to 2015, the number of participants who underwent health check-ups more than once and had information on diabetes was 505,342. The number of participants with incident T2D between the first and last health check-up was 22,284. In multivariate analyses, compared with the native Korean population, the OR for developing T2D was 0.82 (95% CI, 0.78 to 0.86) among Asian migrants.

**Table 1.** Characteristics of Asian migrant and Koreans aged 20 years and older who received health check-ups, according to nationalities in 2015\*

| Variable                             | Native       |              |              | Migrant      |              |              |
|--------------------------------------|--------------|--------------|--------------|--------------|--------------|--------------|
|                                      | Korean       | Chinese      | Japanese     | Filipino     | Vietnamese   | Other Asian  |
| N                                    | 266,162      | 101,223      | 4,445        | 11,888       | 19,224       | 63,765       |
| Age (years)                          | 49.4 ± 14.0  | 46.4 ± 11.4  | 47.4 ± 9.2   | 32.5 ± 6.0   | 30.3 ± 9.2   | 30.3 ± 6.3   |
| Sex (%)                              |              |              |              |              |              |              |
| Men                                  | 53.1         | 52.8         | 28.7         | 80.3         | 70.9         | 92.7         |
| Women                                | 46.9         | 47.2         | 71.3         | 19.7         | 29.1         | 7.3          |
| Economic status (%)                  |              |              |              |              |              |              |
| 1st quartile (low)                   | 15.5         | 23.4         | 24.5         | 34.9         | 27.4         | 28.0         |
| 2nd quartile                         | 25.0         | 45.1         | 19.2         | 53.2         | 53.1         | 57.5         |
| 3rd quartile                         | 21.3         | 27.9         | 25.3         | 10.6         | 18.0         | 12.9         |
| 4th quartile (high)                  | 38.2         | 3.6          | 31.0         | 1.3          | 1.5          | 1.6          |
| Body mass index (kg/m <sup>2</sup> ) | 24.0 ± 3.4   | 23.7 ± 3.3   | 23.2 ± 3.6   | 24.1 ± 3.1   | 21.8 ± 2.4   | 23.3 ± 3.2   |
| Systolic blood pressure (mm Hg)      | 122.1 ± 14.5 | 121.6 ± 14.8 | 117.6 ± 14.3 | 121.2 ± 12.8 | 115.7 ± 12.0 | 118.8 ± 12.0 |
| Fasting serum glucose (mg/dl)        | 99.8 ± 24.2  | 97.7 ± 21.9  | 95.4 ± 19.1  | 94.5 ± 18.6  | 90.3 ± 14.9  | 91.4 ± 16.8  |
| Total serum cholesterol (mg/dl)      | 195.3 ± 38.9 | 190.4 ± 38.0 | 205.4 ± 38.2 | 192.0 ± 37.6 | 182.8 ± 37.5 | 185.0 ± 37.5 |
| Smoking status (%)                   |              |              |              |              |              |              |
| Ex-smokers                           | 18.0         | 10.7         | 10.6         | 4.2          | 4.1          | 4.1          |
| Current smokers                      | 21.5         | 28.7         | 9.5          | 19.8         | 20.1         | 30.9         |
| Any alcohol use (%)                  | 50.1         | 46.2         | 30.5         | 46.4         | 39.9         | 37.9         |
| Physical activity (%)                | 70.2         | 51.6         | 64.4         | 49.9         | 49.1         | 45.4         |

\*Data are expressed as the means ± SD, or %.

**Table 2A.** Age-adjusted prevalence of lifestyle factors, socioeconomic situation, and health status estimates among Asian migrant men, compared to Korean men aged 20 years and older who received health check-ups in 2015

| Variable                        | Age-adjusted prevalence (95% CI)* |                  |                     |                  |                  |                  |                |                      |
|---------------------------------|-----------------------------------|------------------|---------------------|------------------|------------------|------------------|----------------|----------------------|
|                                 | Current smokers                   | Any alcohol use  | Physical inactivity | Low-income level | Obesity          | Hypertension     | Diabetes       | Hypercholesterolemia |
| Men                             |                                   |                  |                     |                  |                  |                  |                |                      |
| Korean                          | 39.9 (39.5–40.3)                  | 70.3 (69.8–70.9) | 24.8 (24.5–25.1)    | 10.9 (10.7–11.1) | 41.7 (41.3–42.1) | 22.4 (22.2–22.7) | 9.6 (9.5–9.8)  | 10.2 (10.0–10.4)     |
| Asian migrant                   |                                   |                  |                     |                  |                  |                  |                |                      |
| Chinese                         | 52.8 (52.1–53.6)                  | 68.6 (67.8–69.4) | 45.8 (45.1–46.4)    | 19.6 (19.2–20.1) | 35.6 (35.0–36.2) | 20.4 (20.0–20.8) | 7.4 (7.2–7.7)  | 7.6 (7.4–7.9)        |
| <i>P</i> -value for difference† | < 0.001                           | < 0.001          | < 0.001             | < 0.001          | < 0.001          | < 0.001          | < 0.001        | < 0.001              |
| Japanese‡                       | 26.8 (22.1–31.5)                  | 70.4 (63.3–77.5) | 27.8 (23.4–32.3)    | 10.4 (6.7–14.0)  | 37.9 (32.5–43.3) | 18.3 (15.7–20.9) | 8.0 (6.3–9.7)  | 14.4 (11.6–17.1)     |
| <i>P</i> -value for difference† | < 0.001                           | 0.990            | 0.161               | 0.778            | 0.187            | 0.006            | < 0.001        | 0.004                |
| Filipino§                       | 23.0 (20.0–26.0)                  | 49.6 (40.1–59.1) | 52.9 (49.4–56.5)    | 28.6 (20.9–36.2) | 41.4 (31.9–51.0) | 20.8 (10.3–31.3) | 8.9 (3.2–14.5) | 11.2 (5.9–16.5)      |
| <i>P</i> -value for difference† | < 0.001                           | < 0.001          | < 0.001             | < 0.001          | 0.958            | 0.772            | 0.804          | 0.695                |
| Vietnamese§                     | 33.2 (30.8–35.5)                  | 51.0 (47.0–54.9) | 51.5 (47.1–55.9)    | 21.7 (18.8–24.7) | 13.5 (11.3–15.6) | 9.2 (6.7–11.6)   | 3.4 (2.1–4.8)  | 12.9 (10.4–15.4)     |
| <i>P</i> -value for difference† | < 0.001                           | < 0.001          | < 0.001             | < 0.001          | < 0.001          | < 0.001          | < 0.001        | 0.016                |
| Other Asian                     | 35.8 (31.6–39.2)                  | 45.4 (41.4–49.4) | 52.9 (49.4–56.5)    | 24.0 (21.7–26.3) | 38.3 (34.6–42.1) | 18.4 (14.9–22.0) | 5.1 (3.8–6.5)  | 9.9 (8.4–11.4)       |
| <i>P</i> -value for difference† | 0.026                             | < 0.001          | < 0.001             | < 0.001          | 0.092            | 0.046            | < 0.001        | 0.709                |

\* Data are expressed as %; age standardization with 10-year age bands; the world standard population was used as the standard population.

† *P*-value for the difference was calculated among Asian migrant men compared with Korean men, according to nationality

‡ Age standardization in diabetes was calculated among Japanese men aged  $\geq 30$  years, compared with Korean men

§ Age standardization in current smokers was calculated among Filipino and Vietnamese men aged 20–59 years, compared with Korean men

**Table 2B.** Age-adjusted prevalence of lifestyle factors, socioeconomic situation, and health status estimates among Asian migrant women, compared to Korean women aged 20 years and older who received health check-ups in 2015

| Variable                        | Age-adjusted prevalence (95% CI)* |                  |                     |                  |                  |                  |               |                      |
|---------------------------------|-----------------------------------|------------------|---------------------|------------------|------------------|------------------|---------------|----------------------|
|                                 | Current smokers                   | Any alcohol use  | Physical inactivity | Low-income level | Obesity          | Hypertension     | Diabetes      | Hypercholesterolemia |
| <b>Women</b>                    |                                   |                  |                     |                  |                  |                  |               |                      |
| Korean                          | 3.8 (3.7–4.0)                     | 37.7 (37.3–38.2) | 32.0 (31.6–32.3)    | 19.2 (19.0–19.5) | 23.2 (22.9–23.4) | 16.0 (15.8–16.2) | 5.9 (5.8–6.0) | 9.5 (9.3–9.7)        |
| Asian migrant                   |                                   |                  |                     |                  |                  |                  |               |                      |
| Chinese                         | 2.9 (2.7–3.1)                     | 23.4 (22.8–24.0) | 46.5 (45.8–47.3)    | 29.6 (29.0–30.2) | 25.6 (25.1–26.1) | 14.6 (14.2–14.9) | 4.4 (4.2–4.6) | 8.3 (8.1–8.6)        |
| <i>P</i> -value for difference† | < 0.001                           | < 0.001          | < 0.001             | < 0.001          | < 0.001          | < 0.001          | < 0.001       | < 0.001              |
| Japanese‡                       | 4.7 (3.2–6.2)                     | 28.9 (24.6–33.3) | 34.5 (31.1–37.9)    | 22.8 (20.4–25.2) | 18.3 (16.0–20.6) | 13.2 (11.2–15.2) | 5.6 (4.0–7.2) | 13.8 (12.0–15.7)     |
| <i>P</i> -value for difference† | 0.207                             | < 0.001          | 0.140               | 0.002            | < 0.001          | 0.012            | 0.040         | < 0.001              |
| Filipino§                       | 2.0 (1.3–2.7)                     | 11.9 (8.8–15.0)  | 51.6 (44.9–58.4)    | 42.0 (36.9–47.0) | 30.9 (25.2–36.6) | 19.1 (13.2–24.9) | 5.2 (2.2–8.2) | 11.2 (6.9–15.6)      |
| <i>P</i> -value for difference† | < 0.001                           | < 0.001          | < 0.001             | < 0.001          | 0.002            | 0.266            | 0.672         | 0.398                |
| Vietnamese§                     | 2.2 (1.1–3.2)                     | 5.0 (4.2–5.7)    | 56.4 (52.9–59.8)    | 38.5 (35.9–41.1) | 12.7 (10.8–14.6) | 10.7 (8.4–13.0)  | 5.6 (3.9–7.3) | 12.9 (10.6–15.2)     |
| <i>P</i> -value for difference† | 0.004                             | < 0.001          | < 0.001             | < 0.001          | < 0.001          | < 0.001          | 0.764         | < 0.001              |
| Other Asian                     | 6.4 (4.8–7.9)                     | 12.8 (11.1–14.5) | 53.2 (49.4–57.1)    | 36.3 (33.3–39.3) | 35.5 (31.4–39.5) | 16.1 (12.7–19.6) | 6.0 (3.8–8.1) | 11.4 (9.0–13.9)      |
| <i>P</i> -value for difference† | < 0.001                           | < 0.001          | < 0.001             | < 0.001          | < 0.001          | 0.949            | 0.961         | 0.094                |

\* Data are expressed as %; age standardization with 10-year age bands; the world standard population was used as the standard population.

† *P*-value for difference was calculated among Asian migrant women compared with Korean women, according to nationality

‡ Aged ≥30 years for age standardization in diabetes

§ Aged 20–59 years for age standardization in current smokers

Compared to Koreans, Chinese (aOR, 0.81; 95% CI, 0.77 to 0.86), Japanese (aOR, 0.67; 95% CI 0.49 to 0.92), and other Asian (aOR, 0.80; 95% CI, 0.74 to 0.86) migrants were less likely to develop T2D after adjustment for covariates. However, among Vietnamese migrant men aged 20–39 years, the OR for developing T2D was 1.32 (95% CI, 1.11 to 1.57), as compared with that in Korean men (Figure 2).

From 2009 to 2015, the number of participants who underwent health check-ups more than once and who had hypertensive information was 431,433, and the number of participants with hypertension between the first and last health check-ups was 48,007. In multivariate analyses, compared with the native Korean population, the OR for developing hypertension was 0.77 (95% CI, 0.75 to 0.79) among Asian migrants. Compared with Koreans, Chinese (aOR, 0.83; 95% CI, 0.80 to 0.86), Filipino (aOR, 0.91; 95% CI, 0.83 to 0.99), Vietnamese (aOR, 0.60; 95% CI, 0.53 to 0.67), and other Asian (aOR, 0.64; 95% CI, 0.60 to 0.67) migrants were less likely to develop hypertension after adjusting for covariates. However, compared with Korean women, the ORs of developing hypertension were 1.49 (95% CI, 1.05 to 2.11) and 2.22 (95% CI, 1.17 to 4.19) among Filipino migrant women aged 20–39 years and > 40 years, respectively (Figure 3).

Compared to the general population in their home countries, we found that most Asian migrants in Korea were healthier regarding the prevalence of obesity, diabetes, and elevated blood pressure. However, the age-adjusted prevalence of obesity (41.4%) in Filipino migrant men was higher than that in men from the general population in the Philippines (30.4%) in 2015. Moreover, in 2014, the age-adjusted prevalence of diabetes (12.5%) among Filipino migrant men was higher than that in men from the general population in the Philippines (7.1%) (Figure 4B).

## **Discussion**

### **Principal findings**

The results of this study suggested that Chinese and Japanese migrants had an overall health advantage regarding diabetes and hypertension, in 2015. However, this health advantage could not apply to Filipino, Vietnamese, and other Asian migrants, particularly women. Specifically, among participants



aged 30–39 years, Chinese migrant men had a higher prevalence of diabetes than Korean men. Moreover, among participants aged 40–49 years, Chinese migrant women had a higher prevalence of hypertension than Korean women. Among Filipino migrants aged 20–49 years, the age-adjusted prevalence of diabetes and hypertension was higher in Filipino migrant women than in Korean women in 2015. Between 2009 and 2015, in the multivariate analyses, among participants aged 20–39 years, Vietnamese migrant men were more likely than Korean men to have T2D. Among participants aged  $\geq 20$  years, a covariate-adjusted analysis indicated that Filipino migrant women were more likely than Korean women to develop hypertension. We found that the prevalence of obesity, diabetes, and elevated blood pressure was lower among most Asian migrants in Korea than among the general population in the migrants' respective home countries. However, the prevalence of obesity and diabetes in Filipino migrant men was higher than that in men from the Philippine general population.

### **Strengths and weaknesses of the study**

Our study had several strengths. This was a large-scale observational study comparing the prevalence of non-communicable disease risk factors among Asian migrants of different nationalities and the host population in Asia, of which the design was cross-sectional in 2015 and longitudinal for 2009–2015. So far, few similar previous studies investigated the healthy migrant effect among international migrant populations of various ethnic groups within the host populations of high-income countries in Asia, using big data coming from the same source, and including lifestyle factors. Second, longitudinal data were collected to examine differences in newly diagnosed T2D and hypertension between Asian migrants according to nationality and Koreans in the same dataset setting. Regarding longitudinal analysis, a recent review study has addressed the importance of answering research questions on migrant health, using longitudinal data.<sup>31</sup> However, due to lack of complete and standardized worldwide migrant data, even a global-scale study that verifies the healthy migrant effects in high-income countries could only be conducted by pooling mortality data and considering heterogeneity—of which the high-quality data were from different sources or sectors—and did not include internation

al migrants in Asia.<sup>1</sup> Moreover, differences in obesity, diabetes, and elevated blood pressure were investigated between various Asian migrants and the general populations in their home countries using direct standardization according to the world standard population. Therefore, the innovative point in this study is that, while comparing Asian migrants with Korean natives regarding health, using health check-up data of the Korean National Health Insurance Service, we conducted age standardization by the world standard population and compared the health of Asian migrants with the health data in their home countries, targeting the general populations in China, Philippines, and Vietnam, published by the Global Health Observatory data repository of the World Health Organization.<sup>29</sup>

Our study also had several limitations. First, the total numbers of diabetes and hypertension cases were underestimated because we only selected individuals who had national health insurance and underwent health check-ups. Further, the study population could have been healthier than the population as a whole if the individuals were more attentive to their health and fully used medical resources. However, a previous study using the same data (from 2009 to 2015) showed that the prevalence of diabetes in Korean men and women aged  $\geq 20$  years showed an increasing trend, in line with the results of a recent study on Korean adults aged  $\geq 30$  years based on the Korean National Health and Nutrition Examination Survey.<sup>16 17 32</sup> Among Korean men and women aged  $\geq 30$  years, the prevalence of diabetes in the NHID health check-up database in 2015 was 12.3% and 7.6%, respectively, similar to the prevalence of diabetes determined using data from the Korean National Health and Nutrition Examination Survey of 2009–2013 (11.4% and 8.7%, respectively).<sup>16 17 32</sup> Moreover, the prevalence of diabetes and hypertension is more likely to have been underestimated in Asian migrants than in Koreans.<sup>16</sup> For example, in Singapore, although international migrant workers have national health insurance when employed, they may not utilize necessary health services or even know that they have been covered.<sup>33</sup> Second, we did not adjust for family history, nutritional factors, stress, and depression in the statistical analysis of the relationship between Asian migrants according to nationality and newly diagnosed T2D or hypertension as compared with Koreans. Third, because of the limited use of data on the type of migrant—namely, international migrant workers and students, and international marriage

migrants, migrant status factors were not considered; however, we used economic instead of migrant status to compensate.<sup>16</sup> Fourth, we could not distinguish between essential and secondary hypertensive participants in our study. However, secondary hypertension is only expected in 5%–10% of participants with hypertension, which may not affect our research conclusion.<sup>34-36</sup> Fifth, there are insufficient samples among Japanese, Filipino, and Vietnamese migrants, regarding several non-communicable risk factors of a specific age group. Nevertheless, we overcame these limitations by using cross-sectional and longitudinal study designs, based on age, sex, and the socioeconomic status of Asian migrants of different nationalities in Korea. Finally, we were unaware of their residence duration and could not calculate the exact follow-up time of incident T2D and hypertension, as there was a multitude of combinations between first and last health check-ups. Even using the Kaplan-Meier method with the follow-up time, it was impossible to accurately compare changes in diabetes and hypertension over time in multiple populations of different nationalities for 2009–2015. This results from differences in countries of birth, early and lifestyle factors, and cultural backgrounds between Asian migrants and Korean natives. However, we performed an annual trend analysis for health status, lifestyle factors, and economic status among Asian migrants and Koreans from 2009 to 2015 in our previous study.<sup>16</sup> These trend analyses provide insight into changes in the overall prevalence of obesity, diabetes, and hypertension among Asian migrants compared with Koreans over time.

### **Comparison with previous studies**

In our study, the age-adjusted prevalence rates of current smokers were higher in Chinese migrant men, compared with Korean men; the age-adjusted prevalence of current smokers was higher in other Asian migrant women compared with Korean women among participants aged  $\geq 20$  years in 2015. In addition, the age-adjusted prevalence of obesity was higher in Chinese, Filipino, and other Asian migrant women than in Korean women. In our previous study, looking at the characteristics of migrants, women underwent health check-ups significantly less than men, but the number of women increased with each year from 2009 to 2015.<sup>16</sup> Moreover, the prevalence of smoking among migrants is changing according

to the situation of the home and host countries.<sup>31 37 38</sup> Furthermore, smoking is harmful to the health of both the migrant and native populations, and risk factors attributed to social inequality can contribute to more than half of major non-communicable diseases, especially for cardiovascular diseases and lung cancer.<sup>11 24 39</sup> Therefore, considering the adverse effects of socioeconomic and cultural factors on public health, the issue of current smokers and obesity among Asian migrants targeting specific nationalities in Korea is needed to address primary and secondary prevention of non-communicable diseases.<sup>39-41</sup>

In migrants, unhealthy diets, lack of physical activity, low socioeconomic status, genetics, and the interaction of genetics and the environment may lead to obesity, diabetes, and hypertension.<sup>9 42-44</sup> Moreover, obesity is one of the major health problems of migrants, particularly migrant women.<sup>45</sup> However, compared with Koreans, we could not find a clear pattern of concurrence between obesity and diabetes/hypertension among Asian migrants. This is consistent with previous research, showing that there was no concurrence pattern between obesity and T2D among international migrants from the Western Pacific to Europe (including Chinese and Vietnamese migrants).<sup>45</sup> Nonetheless, among participants aged 40–49 years, Chinese migrant women had a higher prevalence of hypertension than Korean women. In addition, there was a clear pattern of concurrence between obesity and hypertension in Chinese migrant women aged 40–49 years. Therefore, either socioeconomic or cultural stress and obesity may be the main factors contributing to hypertension.<sup>9 17 46-48</sup>

Among Filipino migrant women aged 20–49 years, we found a distinct pattern of concurrence between obesity and diabetes/hypertension, as compared with Korean women, probably because of unhealthy diets, lack of exercise, early life factors, poor adherence to medication, low socioeconomic status, and both genetic and genetic–environmental interactions.<sup>9 42-44</sup> Furthermore, the stress generated by adapting to a new cultural process may contribute to a greater prevalence of hypertension among Filipino migrant women aged 20–49, and this appears to be more important than unhealthy diets or lack of exercise.<sup>47 48</sup>

In 2015, among participants aged 30–39 years, Chinese migrant men had a greater prevalence of diabetes than Korean men, whereas Filipino migrant women had a greater prevalence of diabetes than Korean women. Therefore, the migrant age group of 30–39 years might be more susceptible to diabetes after several migrant-related lifestyle changes.<sup>9 42-44</sup> Nonetheless, the majority of Asian migrants were less likely to have T2D and hypertension than Koreans.<sup>16 17</sup> Furthermore, from 2009 to 2015, among participants aged 20–39 years, Vietnamese migrant men were more likely to have T2D than Korean men. This finding is consistent with previous studies, showing that international migrants developed diabetes 10–20 years earlier than the local population of their host countries.<sup>9 49 50</sup>

Here, Japanese and Vietnamese migrants have a higher prevalence of hypercholesterolemia, compared with that of Koreans. Previous studies shows that, because of Americanized diets, which are higher in fat than traditional Japanese diets, total cholesterol levels in Japanese Americans became higher than that in Japanese natives.<sup>51 52</sup> Although diet and hypercholesterolemia may increase the prevalence of coronary heart disease, the influence of Japanese culture on coronary heart disease is important, irreplaceable, and independent of unhealthy diets and smoking.<sup>51 53 54</sup> Furthermore, given the importance of the cultural influence and possible closer social networks, the majority of Asian migrants in Korea could have been protected from T2D and hypertension by cultural effects. However, Vietnamese migrant men aged 20–39 years could be more susceptible to T2D because of greater vulnerability to the stress from the Korean society and culture, under the combined effect of unhealthy diets, genetic and genetic–environmental interactions.

Considering the important relationship between the pressure of cultural changes and elevated blood pressure among migrants, the reason that most Asian migrants were less likely to develop hypertension than Koreans might be the similar cultures and the relatively close geographic location to their home country.<sup>17 47 48</sup> Asian migrants might be more likely to adapt to the social environment of Korea and maintain large social networks, ensuring sufficient social support. These factors might help Asian migrants in Korea reduce stress and deal with conflicts more easily than when adapting to a different

society. Nevertheless, we cannot exclude the possibility that Asian migrants may return to their home countries either because of poor health or financial difficulties in Korea.<sup>55-57</sup> Therefore, while the detectable incidence of diabetes and hypertension were lower in this and previous studies among Asian migrants, the true incidence might be higher.<sup>16 17</sup> However, in our study, Filipino migrant women had a higher probability of developing hypertension than Korean women. This might be caused by the social and cultural challenges encountered by Filipino women during the process of acculturation to Korea.<sup>11</sup>

47 48

Compared with the general population in their home countries, we found that most Asian migrants in Korea were healthier regarding the prevalence of obesity, diabetes, and elevated blood pressure. Nevertheless, the prevalence of obesity and diabetes among Filipino migrant men was greater, compared to men from the general Philippine population, potentially due to an unhealthy diet, lack of physical activity, low socioeconomic status, genetics, and the interaction between genetics and the environment.<sup>9 42-44</sup> From 2009 to 2015, the age-adjusted prevalence of diabetes, hypertension, and hypercholesterolemia among most Asian migrants—regardless of sex—was lower than that among Koreans.<sup>16</sup> Based on previous studies, the need for better economic status, educational background, and social and living environment among international migration can explain the healthy migrant effect, combined with the self-selection of migrants as well as the host country's immigration policy.<sup>2 11 31 58</sup> Moreover, the international migration process usually includes the cycle of before and after arrival to high-income host countries, and the return to the migrants' home countries.<sup>31</sup> However, regarding Israel, the reason for the prevalence of the sick migrant effect could be attributed to the Jewish population's international migration to Israel for ideological and not for economic motivations, compared with the healthy migrant effect in the 16 European countries.<sup>11</sup> Therefore, the pursuit for better economic, educational, or even social and living environmental needs, combined with the self-selection of migrants as well as the immigration policy of the Korean government, may explain the healthy migration advantage in some non-communicable disease risk factors, especially targeting diabetes and hypertension among most Asian migrants in Korea.

## **Meaning of the study**

In 2015, among Chinese and Japanese migrants, there was an overall health advantage regarding diabetes and hypertension. However, the age-adjusted prevalence of diabetes and hypertension Filipino migrants—regarding both men and women—was similar to that in Koreans. The age-adjusted prevalence of diabetes in Vietnamese migrant women was similar to that in Korean women, whereas the age-adjusted prevalence of diabetes and hypertension in other Asian migrant women was similar to that in Korean women. Between 2009–2015, based both on this and previous studies, the healthy migrant effect and health advantages of Filipino, Vietnamese, and other Asian migrants, particularly migrant women, is gradually diminishing, particularly considering the lower socioeconomic situations, cultural stress, and increasing trends of obesity among Asian migrants in Korea.<sup>2 7 8 16 17</sup> In addition, not only the problem of current smokers among Chinese migrant men and other Asian migrant women, but also that of obesity among Chinese, Vietnamese, and other Asian migrant women in Korea are needed to be addressed, for the prevention of non-communicable diseases, especially targeting cardiovascular diseases and lung cancer.<sup>24 39 59</sup>

## **Conclusions and implications for future research**

In conclusion, the identified relationships between Asian migrant nationality and cardiovascular risk factors provide basic evidence for targeting high-risk groups and improving policy development in Korea. Future studies should focus on using large, high-quality longitudinal data, targeting the nationwide population from the National Health Insurance Service or the National Health and Nutrition Examination Surveys, to persistently monitor both communicable and non-communicable diseases, and respective risk factors for social and health policy-makings among migrants in Korea and Asia—and even worldwide—compared with their home and host country populations, while the perspective of preventative medicine should be taken into account to investigate the healthy migrant effect over time, fully considering socioeconomic and cultural factors. In addition, to distinguish between genetics, environment, and their interaction, more rigorous and innovative study designs should be used to

research the health effects of culture, social environment, and ethnicity/race on non-communicable diseases such as dyslipidemia, cardiovascular disease, and cancer.

**Acknowledgements:** We thank Carol Brayne and Caroline Lee (University of Cambridge), Jae-Heon Kang (Sungkyunkwan University), Jian Li (University of California), Jong-Koo Lee and Young-Ho Khang (Seoul National University), and Shu-Zheng Liu (Zhengzhou University) for their constructive suggestions and comments. We also thank Editage ([www.editage.cn](http://www.editage.cn)), Luyao Zhang (Zhengzhou University), and Mohamed S. Bangura (Dalian Medical University), for English language editing.

**Contributors:** HP, JMY, AS, and BC conceived the study. HP wrote the first and successive drafts of the manuscript. HP modeled and analyzed the data. HP, JMY, and AS contributed to study conception and design. JMY, AS, and DK contributed to data analysis. All authors revised the manuscript for important intellectual content. HP and BC had full access to the data and take responsibility for the integrity of the data and the accuracy of the data analysis. HP and BC are the guarantors. All authors read and approved the final version of the paper for submission.

**Competing interests:** All authors have completed the ICMJE uniform disclosure form at [www.icmje.org/coi\\_disclosure.pdf](http://www.icmje.org/coi_disclosure.pdf) and declare: that no support was received from any organization for the submitted work; that the authors have no financial relationships with any organizations that might have an interest in the submitted work in the previous 3 years; and that there are no other relationships or activities that could appear to have influenced the submitted work.

**Ethical approval:** Not required.

**Data sharing:** No additional data available.

**Funding:** This study was funded by the Seoul National University Hospital (Republic of Korea), Yuhan Pharmaceutical (Republic of Korea), and Henan Cancer Hospital/Affiliated Cancer Hospital of Zhengzhou University (China).

**Transparency:** The lead author (HP) affirms that this manuscript is an honest, accurate, and transparent



account of the study being reported; that no important aspects of the study have been omitted; and that any discrepancies from the study as planned (and, if relevant, registered) have been explained.

This is an Open Access article distributed in accordance with the terms of the Creative Commons Attribution (CC BY 4.0) license, which permits others to distribute, remix, adapt and build upon this work, for commercial use, provided the original work is properly cited. See: <http://creativecommons.org/licenses/by/4.0/>.

## References

1. Aldridge RW, Nellums LB, Bartlett S, et al. Global patterns of mortality in international migrants: a systematic review and meta-analysis. *The Lancet* 2018;392(10164):2553-66.
2. Vang ZM, Sigouin J, Flenon A, et al. Are immigrants healthier than native-born Canadians? A systematic review of the healthy immigrant effect in Canada. *Ethn Health* 2017;22(3):209-41. doi: 10.1080/13557858.2016.1246518 [published Online First: 2016/11/05]
3. Kennedy S, Kidd MP, McDonald JT, et al. The Healthy Immigrant Effect: Patterns and Evidence from Four Countries. *Journal of International Migration and Integration* 2015;16(2):317-32. doi: 10.1007/s12134-014-0340-x
4. McDonald JT, Kennedy S. Insights into the 'healthy immigrant effect': health status and health service use of immigrants to Canada. *Social Science & Medicine* 2004;59(8):1613-27. doi: <https://doi.org/10.1016/j.socscimed.2004.02.004>
5. CHISWICK BR, LEE YL, MILLER PW. IMMIGRANT SELECTION SYSTEMS AND IMMIGRANT HEALTH. *Contemporary Economic Policy* 2008;26(4):555-78. doi: 10.1111/j.1465-7287.2008.00099.x
6. Marmot MG, Adelstein AM, Bulusu L. Lessons from the study of immigrant mortality. *Lancet* 1984;1(8392):1455-7. doi: 10.1016/s0140-6736(84)91943-3 [published Online First: 1984/06/30]
7. Argeseanu Cunningham S, Ruben JD, Narayan KM. Health of foreign-born people in the United States: a review. *Health Place* 2008;14(4):623-35. doi: 10.1016/j.healthplace.2007.12.002 [published Online First: 2008/02/05]
8. Rechel B, Mladovsky P, Ingleby D, et al. Migration and health in an increasingly diverse Europe. *Lancet* 2013;381(9873):1235-45. doi: 10.1016/s0140-6736(12)62086-8 [published Online First: 2013/04/02]
9. Agyemang C, Born B-Jvd. Non-communicable diseases in migrants: An expert review. *J Travel Med* 2018;26(2):tay107.
10. Commodore-Mensah Y, Ukonu N, Obisesan O, et al. Length of residence in the United States is associated with a higher prevalence of cardiometabolic risk factors in immigrants: a contemporary analysis of the National Health Interview Survey. *Journal of the American Heart Association* 2016;5(11):e004059.
11. Constant AF, García-Muñoz T, Neuman S, et al. A "healthy immigrant effect" or a "sick immigrant effect"? Selection and policies matter. *Eur J Health Econ* 2018;19(1):103-21. doi: 10.1007/s10198-017-0870-1 [published Online First: 2017/02/02]
12. Zheng W, McLerran DF, Rolland B, et al. Association between body-mass index and risk of death in more than 1 million Asians. *N Engl J Med* 2011;364(8):719-29. doi: 10.1056/NEJMoa1010679 [published Online First: 2011/02/25]
13. Sattar N, Gill JM. Type 2 diabetes in migrant south Asians: mechanisms, mitigation, and management. *Lancet Diabetes Endocrinol* 2015;3(12):1004-16. doi: 10.1016/s2213-8587(15)00326-5 [published Online First: 2015/10/23]
14. Misra A, Tandon N, Ebrahim S, et al. Diabetes, cardiovascular disease, and chronic kidney disease in South Asia: current status and future directions. *Bmj* 2017;357:j1420. doi: 10.1136/bmj.j1420 [published Online First: 2017/04/13]
15. Jee SH, Sull JW, Park J, et al. Body-mass index and mortality in Korean men and women. *N Engl J Med* 2006;355(8):779-87. doi: 10.1056/NEJMoa054017 [published Online First: 2006/08/24]
16. Piao H, Yun JM, Shin A, et al. Longitudinal Study of Diabetic Differences between International Migrants and Natives among the Asian Population. *Biomol Ther (Seoul)* 2020;28(1):110-18. doi: 10.4062/biomolther.2019.163 [published Online First: 2019/11/19]
17. Heng P. A comparison of cardiovascular risk factors among Asian migrants and the native population in Korea. Graduate School of Seoul National University, 2020.
18. Vearey J, Orcutt M, Gostin L, et al. Building alliances for the global governance of migration and

- health. *Bmj* 2019;366:14143. doi: 10.1136/bmj.14143 [published Online First: 2019/09/19]
19. Seong SC, Kim Y-Y, Khang Y-H, et al. Data resource profile: the national health information database of the National Health Insurance Service in South Korea. *International journal of epidemiology* 2016;46(3):799-800.
  20. Song SO, Jung CH, Song YD, et al. Background and data configuration process of a nationwide population-based study using the Korean national health insurance system. *Diabetes & metabolism journal* 2014;38(5):395-403.
  21. Lee Y-h, Han K, Ko S-H, et al. Data analytic process of a nationwide population-based study using national health information database established by National Health Insurance Service. *Diabetes & metabolism journal* 2016;40(1):79-82.
  22. Lee H, Cho J, Shin DW, et al. Association of cardiovascular health screening with mortality, clinical outcomes, and health care cost: a nationwide cohort study. *Preventive medicine* 2015;70:19-25.
  23. Lee J, Lee JS, Park S-H, et al. Cohort profile: the national health insurance service–national sample cohort (NHIS-NSC), South Korea. *International journal of epidemiology* 2017;46(2):e15-e15.
  24. Di Cesare M, Khang YH, Asaria P, et al. Inequalities in non-communicable diseases and effective responses. *Lancet* 2013;381(9866):585-97. doi: 10.1016/s0140-6736(12)61851-0 [published Online First: 2013/02/16]
  25. Kinra S, Bowen LJ, Lyngdoh T, et al. Sociodemographic patterning of non-communicable disease risk factors in rural India: a cross sectional study. *Bmj* 2010;341:c4974. doi: 10.1136/bmj.c4974 [published Online First: 2010/09/30]
  26. Ezzati M, Lopez AD, Rodgers A, et al. Selected major risk factors and global and regional burden of disease. *Lancet* 2002;360(9343):1347-60. doi: 10.1016/s0140-6736(02)11403-6 [published Online First: 2002/11/09]
  27. Grundy SM, Cleeman JI, Daniels SR, et al. Diagnosis and management of the metabolic syndrome: an American Heart Association/National Heart, Lung, and Blood Institute scientific statement. *Circulation* 2005;112(17):2735-52.
  28. O'Donnell CJ, Elosua R. Cardiovascular risk factors. Insights from Framingham Heart Study. *Rev Esp Cardiol* 2008;61(3):299-310. [published Online First: 2008/03/26]
  29. Ahmad OB, Boschi-Pinto C, Lopez AD, et al. Age standardization of rates: a new WHO standard. *J Geneva: World Health Organization* 2001;9(10)
  30. Barros AJ, Hirakata VN. Alternatives for logistic regression in cross-sectional studies: an empirical comparison of models that directly estimate the prevalence ratio. *BMC Med Res Methodol* 2003;3:21. doi: 10.1186/1471-2288-3-21 [published Online First: 2003/10/22]
  31. Abubakar I, Aldridge RW, Devakumar D, et al. The UCL-Lancet Commission on Migration and Health: the health of a world on the move. *Lancet* 2018;392(10164):2606-54. doi: 10.1016/S0140-6736(18)32114-7 [published Online First: 2018/12/12]
  32. Lee J-w, Kang H-T, Lim H-J, et al. Trends in diabetes prevalence among Korean adults based on Korean National Health and Nutrition Examination Surveys III–VI. *Diabetes research and clinical practice* 2018;138:57-65.
  33. Ang JW, Chia C, Koh CJ, et al. Healthcare-seeking behaviour, barriers and mental health of non-domestic migrant workers in Singapore. *BMJ global health* 2017;2(2):e000213.
  34. Tziomalos K. Secondary Hypertension: Novel Insights. *Curr Hypertens Rev* 2020;16(1):11. doi: 10.2174/1573402115666190416161116 [published Online First: 2019/05/01]
  35. Lee HY, Shin J, Kim GH, et al. 2018 Korean Society of Hypertension Guidelines for the management of hypertension: part II-diagnosis and treatment of hypertension. *Clin Hypertens* 2019;25:20. doi: 10.1186/s40885-019-0124-x [published Online First: 2019/08/08]
  36. Omura M, Saito J, Yamaguchi K, et al. Prospective study on the prevalence of secondary hypertension among hypertensive patients visiting a general outpatient clinic in Japan. *Hypertens Res* 2004;27(3):193-202. doi: 10.1291/hypres.27.193 [published Online First: 2004/04/15]
  37. Bosdriesz JR, Lichthart N, Witvliet MI, et al. Smoking prevalence among migrants in the US

- compared to the US-born and the population in countries of origin. *PLoS One* 2013;8(3):e58654. doi: 10.1371/journal.pone.0058654 [published Online First: 2013/03/23]
38. Weber MF, Banks E, Sitas F. Smoking in migrants in New South Wales, Australia: report on data from over 100 000 participants in The 45 and Up Study. *Drug Alcohol Rev* 2011;30(6):597-605. doi: 10.1111/j.1465-3362.2010.00247.x [published Online First: 2011/03/02]
  39. Blakely T, Fawcett J, Hunt D, et al. What is the contribution of smoking and socioeconomic position to ethnic inequalities in mortality in New Zealand? *Lancet* 2006;368(9529):44-52. doi: 10.1016/s0140-6736(06)68813-2 [published Online First: 2006/07/04]
  40. Singh GK, Jemal A. Socioeconomic and Racial/Ethnic Disparities in Cancer Mortality, Incidence, and Survival in the United States, 1950-2014: Over Six Decades of Changing Patterns and Widening Inequalities. *J Environ Public Health* 2017;2017:2819372. doi: 10.1155/2017/2819372 [published Online First: 2017/04/15]
  41. Koene RJ, Prizment AE, Blaes A, et al. Shared Risk Factors in Cardiovascular Disease and Cancer. *Circulation* 2016;133(11):1104-14. doi: 10.1161/circulationaha.115.020406 [published Online First: 2016/03/16]
  42. Agyemang C, van Oeffelen AA, Norredam M, et al. Socioeconomic inequalities in stroke incidence among migrant groups: analysis of nationwide data. *Stroke* 2014;45(8):2397-403. doi: 10.1161/strokeaha.114.005505 [published Online First: 2014/06/19]
  43. Agyemang C, Beune E, Meeks K, et al. Rationale and cross-sectional study design of the Research on Obesity and type 2 Diabetes among African Migrants: the RODAM study. *BMJ Open* 2014;4(3):e004877. doi: 10.1136/bmjopen-2014-004877 [published Online First: 2014/03/25]
  44. Misra A, Ganda OP. Migration and its impact on adiposity and type 2 diabetes. *Nutrition* 2007;23(9):696-708. doi: 10.1016/j.nut.2007.06.008 [published Online First: 2007/08/07]
  45. Meeks KA, Freitas-Da-Silva D, Adeyemo A, et al. Disparities in type 2 diabetes prevalence among ethnic minority groups resident in Europe: a systematic review and meta-analysis. *Intern Emerg Med* 2016;11(3):327-40.
  46. Commodore-Mensah Y, Samuel LJ, Dennison-Himmelfarb CR, et al. Hypertension and overweight/obesity in Ghanaians and Nigerians living in West Africa and industrialized countries: a systematic review. *J Hypertens* 2014;32(3):464-72. doi: 10.1097/hjh.0000000000000061 [published Online First: 2014/01/22]
  47. Gibson J, Stillman S, McKenzie D, et al. Natural experiment evidence on the effect of migration on blood pressure and hypertension. *Health Econ* 2013;22(6):655-72. doi: 10.1002/hec.2834 [published Online First: 2012/05/09]
  48. Steffen PR, Smith TB, Larson M, et al. Acculturation to Western society as a risk factor for high blood pressure: a meta-analytic review. *Psychosom Med* 2006;68(3):386-97. doi: 10.1097/01.psy.0000221255.48190.32 [published Online First: 2006/06/02]
  49. Snijder MB, Agyemang C, Peters RJ, et al. Case Finding and Medical Treatment of Type 2 Diabetes among Different Ethnic Minority Groups: The HELIUS Study. *J Diabetes Res* 2017;2017:9896849. doi: 10.1155/2017/9896849 [published Online First: 2017/02/06]
  50. Mather HM, Chaturvedi N, Fuller JH. Mortality and morbidity from diabetes in South Asians and Europeans: 11-year follow-up of the Southall Diabetes Survey, London, UK. *Diabet Med* 1998;15(1):53-9. doi: 10.1002/(sici)1096-9136(199801)15:1<53::Aid-dia521>3.0.Co;2-v [published Online First: 1998/02/24]
  51. Marmot MG, Syme SL, Kagan A, et al. Epidemiologic studies of coronary heart disease and stroke in Japanese men living in Japan, Hawaii and California: prevalence of coronary and hypertensive heart disease and associated risk factors. *Am J Epidemiol* 1975;102(6):514-25. doi: 10.1093/oxfordjournals.aje.a112189 [published Online First: 1975/12/01]
  52. Yano K, Rhoads GG, Kagan A, et al. Dietary intake and the risk of coronary heart disease in Japanese men living in Hawaii. *Am J Clin Nutr* 1978;31(7):1270-9. doi: 10.1093/ajcn/31.7.1270 [published Online First: 1978/07/01]
  53. Marmot MG, Syme SL. Acculturation and coronary heart disease in Japanese-Americans. *Am J*

- Epidemiol* 1976;104(3):225-47. doi: 10.1093/oxfordjournals.aje.a112296 [published Online First: 1976/09/01]
54. Matsumoto YS. Social Stress and Coronary Heart Disease in Japan: A Hypothesis. *The Milbank Memorial Fund Quarterly* 1970;48(1):9-36. doi: 10.2307/3349286
55. Palloni A, Arias E. Paradox lost: explaining the Hispanic adult mortality advantage. *Demography* 2004;41(3):385-415. doi: 10.1353/dem.2004.0024 [published Online First: 2004/10/06]
56. Abraído-Lanza AF, Dohrenwend BP, Ng-Mak DS, et al. The Latino mortality paradox: a test of the "salmon bias" and healthy migrant hypotheses. *Am J Public Health* 1999;89(10):1543-8. doi: 10.2105/ajph.89.10.1543 [published Online First: 1999/10/08]
57. Pablos-Méndez A. Mortality among Hispanics. *Jama* 1994;271(16):1237. [published Online First: 1994/04/27]
58. The Healthy Immigrant Effect and Immigrant Selection: Evidence from Four Countries; 2006.
59. Vineis P, Wild CP. Global cancer patterns: causes and prevention. *Lancet* 2014;383(9916):549-57. doi: 10.1016/s0140-6736(13)62224-2 [published Online First: 2013/12/20]

### Figure Legends

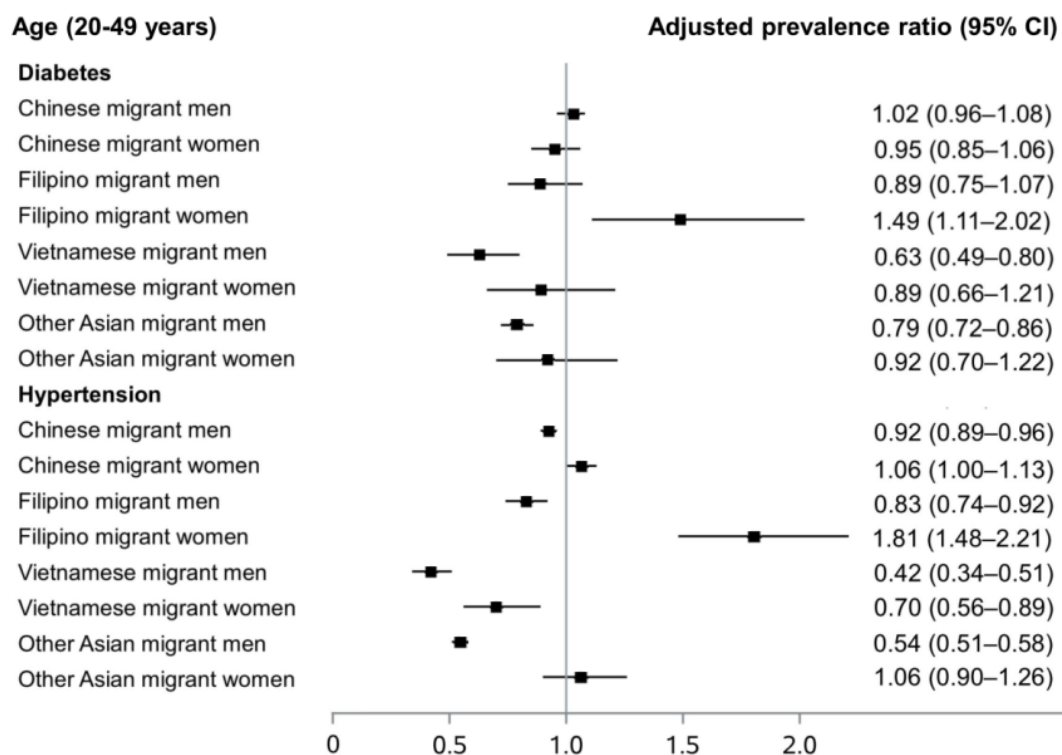
**Figure 1.** Age-adjusted prevalence ratios of diabetes and hypertension among Asian migrants, compared with Koreans aged 20-49 years who received health check-ups in 2015

**Figure 2.** Multivariable adjusted odds ratios of developing type 2 diabetes between the first and last health check-ups, according to nationality

**Figure 3.** Multivariable adjusted odds ratios of developing hypertension between the first and last health check-ups, according to nationality

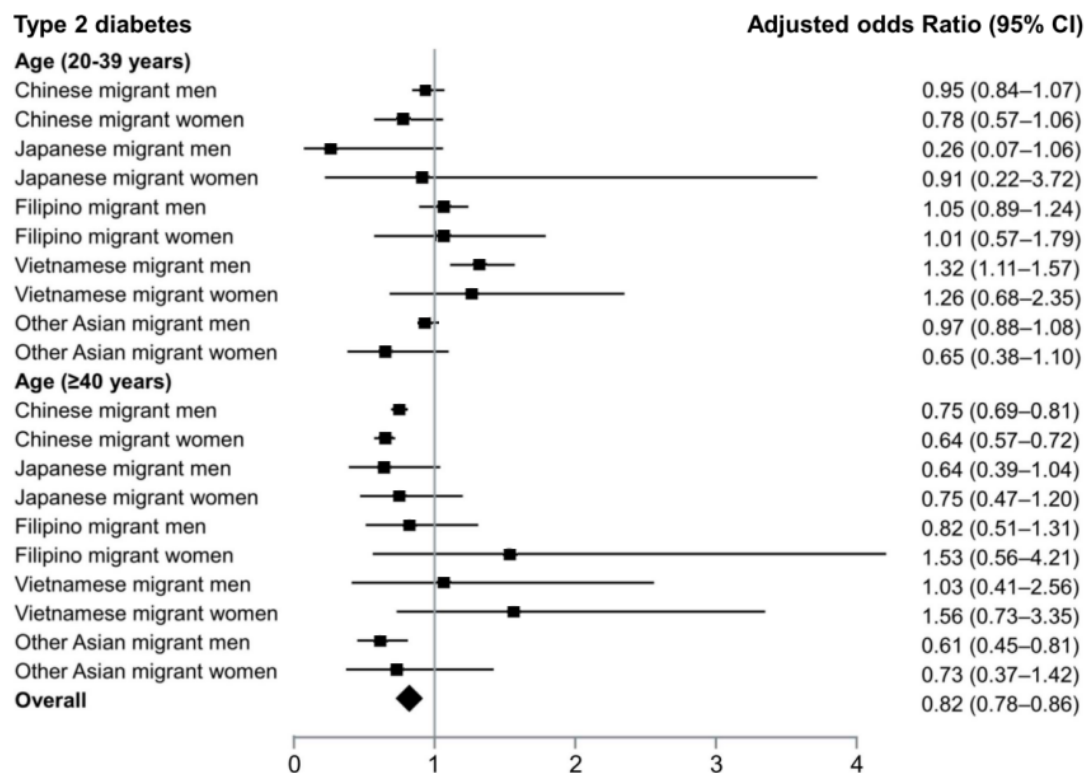
**Figure 4.** Age-adjusted prevalence of obesity, elevated blood pressure, and diabetes among Chinese, Filipino, and Vietnamese migrants, compared with the general population in their home countries

**Figure 1.** Age-adjusted prevalence ratios of diabetes and hypertension among Asian migrants, compared with Koreans aged 20-49 years who received health check-ups in 2015\*



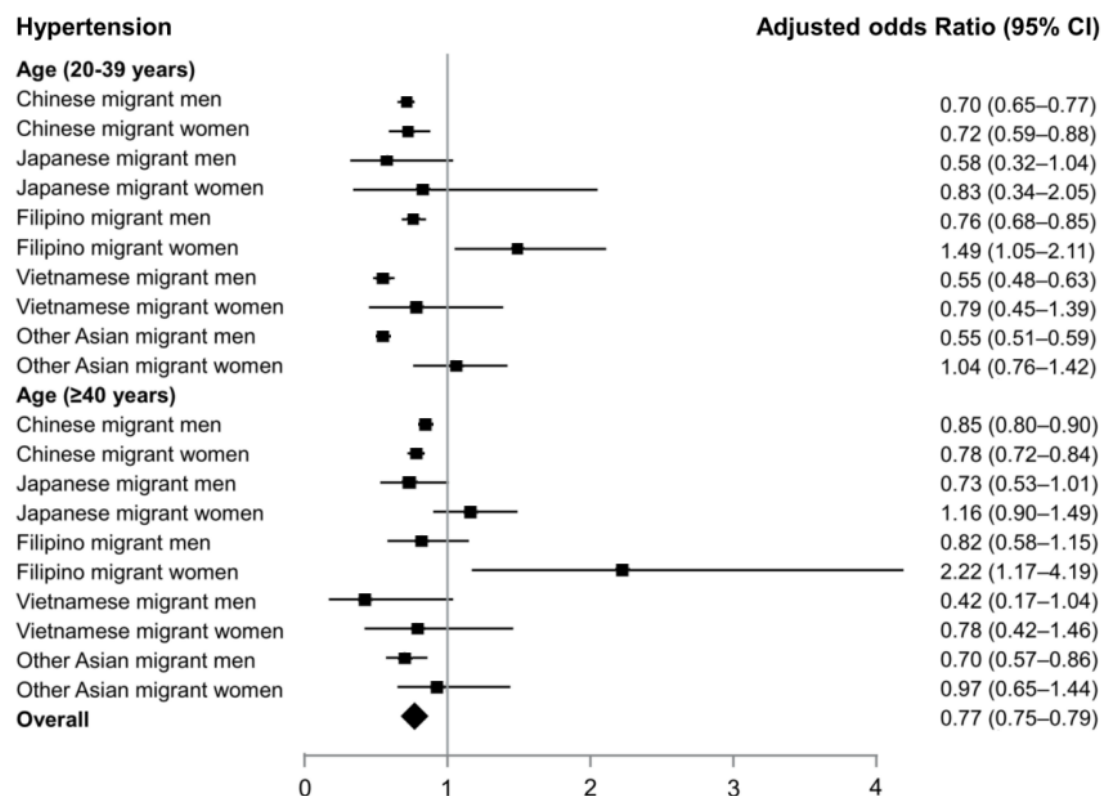
\* Age-adjusted prevalence ratios and 95% confidence intervals (CIs) of diabetes and hypertension were examined; age standardization with 10-year age bands; the world standard population was used as the standard population.

**Figure 2.** Multivariable adjusted odds ratios of developing type 2 diabetes between the first and last health check-ups, according to nationality\*



\* Adjusted odds ratios and 95% confidence intervals (CIs) of incident type 2 diabetes determinants were determined using the multivariable logistic regression model; adjusted for age (continuous, years), economic status, BMI (continuous, kg/m<sup>2</sup>), smoking status, any alcohol use, and physical activity.

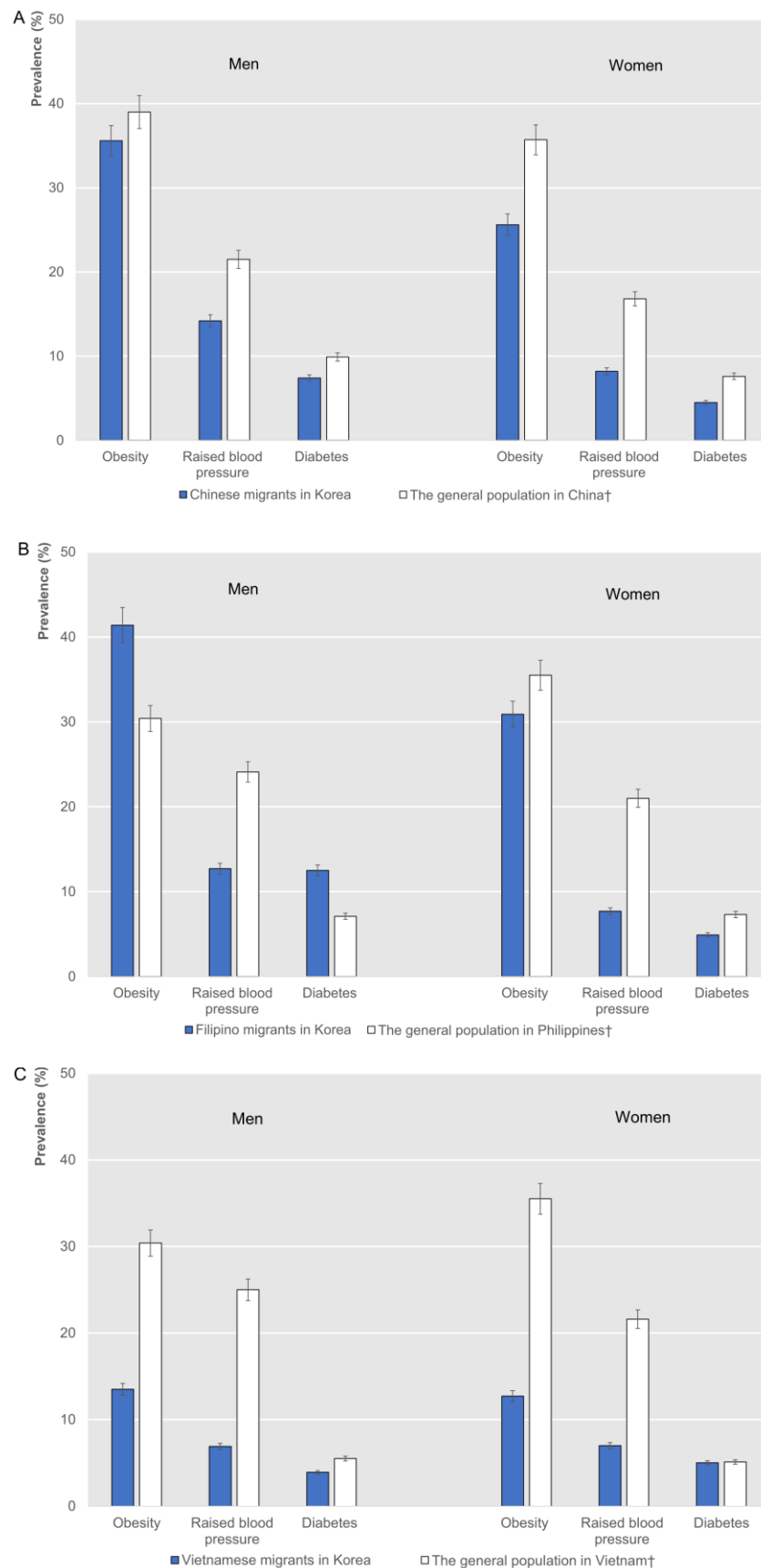
**Figure 3.** Multivariable adjusted odds ratios of developing hypertension between the first and last health check-ups, according to nationality\*



\* Adjusted odds ratios and 95% confidence intervals (CIs) of incident hypertension determinants were determined using the multivariable logistic regression model; adjusted for age (continuous, years), economic status, BMI (continuous, kg/m<sup>2</sup>), smoking status, any alcohol use, and physical activity.



**Figure 4.** Age-adjusted prevalence of obesity, elevated blood pressure, and diabetes among Chinese, Filipino, and Vietnamese migrants, compared with the general population in their home countries\*



\* Data are expressed as %; age standardization with 10-year age bands; the world standard population was used as the standard population; obesity was defined as a BMI  $\geq 25$  kg/m<sup>2</sup> for the Asian population; elevated blood pressure was defined as blood pressure  $\geq 140/90$  mm Hg; diabetes was defined as a fasting blood glucose  $\geq 126$  mg/dL, previous diabetes diagnosis, or prescription of antidiabetic drugs; regarding obesity and elevated blood pressure, we used the data in 2015; regarding diabetes, we used the data in 2014.

† Source: data from the global health observatory data repository of World Health Organization. Available from: <http://apps.who.int/gho/data/node.main.A867?lang=en/>.