

# The auditory Mismatch Negativity reflects accelerated aging in adults with Down's Syndrome

## AUTHORS:

Chiara Avancini<sup>\*a</sup>, Sally Jennings<sup>\*a,f</sup>, Srivas Chennu<sup>b</sup>, Valdas Noreika<sup>c</sup>, April Le<sup>a</sup>, Tristan Bekinschtein<sup>d</sup>, Madeleine Walpert<sup>a</sup>, Isabel Clare<sup>a,e</sup>, Anthony Holland<sup>a</sup>, Shahid Zaman<sup>a,e</sup> & Howard Ring<sup>a,e</sup>

\*Joint first authorship

## AFFILIATIONS:

- a. Department of Psychiatry, University of Cambridge; Douglas House, 18B Trumpington Road, CB2 8AH Cambridge, UK
- b. School of Computing, University of Kent, Darwin Road, CT2 7NZ Canterbury, UK;
- c. Department of Biological and Experimental Psychology, School of Biological and Chemical Sciences, Queen Mary University of London, Mile End Road, E1 4NS London, UK;
- d. Department of Psychology, University of Cambridge, Downing Street, CB2 3EB Cambridge, UK;
- e. Cambridgeshire & Peterborough NHS Foundation Trust, Elizabeth House, Fulbourn, CB21 5EF Cambridge, UK;
- f. Cambridge Cognition, Tunbridge Court, Bottisham, CB25 9TU Cambridge, UK

## CORRESPONDING AUTHOR:

Chiara Avancini – Cambridge Intellectual & Developmental Disabilities Research Group, , Department of Psychiatry, University of Cambridge, Douglas House, 18B Trumpington Road, CB2 8AH Cambridge, UK . Email: [ca410@medschl.cam.ac.uk](mailto:ca410@medschl.cam.ac.uk)

## Abstract

Down's Syndrome (DS) is associated with premature and accelerated ageing and a propensity for early-onset Alzheimer's disease (AD). The early symptoms of dementia in people with DS may reflect frontal lobe vulnerability to amyloid deposition. The Mismatch Negativity (MMN) is a frontocentral component elicited by auditory violations of expected sensory input and it reflects sensory memory and automatic attention switching. In the typically developing (TD) population, the MMN response has been found to decrease with age. In the cross-sectional phase of this study the MMN was used to investigate the premature neurological ageing hypothesis of DS. In the longitudinal phase, we evaluated the MMN as a potential predictor of cognitive decline. The study found that age predicted MMN amplitude in DS but not in those who are TD, showing that the MMN reflects accelerated

**NOTE: This preprint reports new research that has not been certified by peer review and should not be used to guide clinical practice.**

ageing in DS. However, a follow-up of 34 adults with DS found that neither amplitude nor latency of the MMN predicted cognitive decline one year later.

## 1 **1. Introduction**

2 People with Down's Syndrome (DS) experience premature and accelerated ageing. This is evident  
3 across several physiological systems: from earlier menopause to premature skin wrinkling and early  
4 onset of dementia (Zigman, 2013). Alzheimer's disease (AD) pathology affects nearly the entirety of  
5 the DS population as they age with a prevalence of clinical dementia in over 40% by the time  
6 individuals with DS reach their 50s (Holland et al., 1998) and 75% by their 60s (Holland & Ball,  
7 2009). In DS there is amyloid overproduction as a result of the triplication of the amyloid precursor  
8 protein gene, which is located on chromosome 21. Similarly to the Typically Developing population  
9 (TD), cerebral amyloid binding is increased once symptoms of dementia emerge and when clinically  
10 diagnosed dementia is apparent. The pathology progression seen in DS resembles that of sporadic  
11 AD (Annus et al., 2016). Neuropathological changes associated with Alzheimer's disease (AD) begin  
12 years before symptoms onset (Sperling et al., 2013; Teipel et al., 2020) and therefore, early  
13 detection and the ability to track pathological progression has the potential for maximizing the  
14 benefits of pharmacological and clinical interventions, ultimately leading to prevention of dementia,  
15 increased life expectancy and improved quality of life. Hence, effort has been put into identifying  
16 markers that can reliably measure premature ageing and predict future cognitive decline (Bibina et  
17 al., 2017; Counts et al., 2017; de Roeck et al., 2019; Sperling et al., 2013).

18 Positive amyloid or tau tracer binding in positron emission tomography (PET) imaging, low cerebro-  
19 spinal fluid (CSF) concentrations of amyloid, high CSF concentrations of total tau and phospho-tau,  
20 and MRI measures of cortical and hippocampal structure and function have been suggested to be  
21 accurate biomarkers of AD progression (Annus et al., 2016; Handen et al., 2012). While the utility of  
22 these measures in early detection and tracing of AD progression is arguably of fundamental

1 importance, they overlook one key feature - the brain is a dynamic system that processes internal  
2 and external stimuli in a matter of milliseconds, and it is this ability that ultimately determines  
3 cognitive function and behaviour. In order to fully understand AD pathology, it is therefore crucial to  
4 understand how AD functionally affects brain dynamics. This can be achieved with  
5 electroencephalography (EEG), which also has the advantage of being an inexpensive, non-invasive  
6 and relatively participant-friendly technology, making it suitable for using with the DS population.  
7 Sensory memory is a function that has been found to decline with typical ageing. This has been  
8 assessed electrophysiologically by testing the deterioration of the auditory Mismatch Negativity  
9 response (MMN) (Cheng et al., 2013; Horváth et al., 2007; Kiang et al., 2009; Näätänen et al., 2011;  
10 Schiff et al., 2008) with age. In the TD population, the amplitude of the MMN is attenuated and the  
11 latency slowed in older compared to younger individuals (Cheng et al., 2013; Horváth et al., 2007;  
12 Kiang et al., 2009; Näätänen et al., 2011; Schiff et al., 2008). The MMN is a frontocentrally  
13 distributed Event-Related Potential (ERP) component peaking at 150-200ms after stimulus onset. It  
14 is elicited by the occurrence of violations of auditory regularities encoded as sensory memory trace  
15 in the auditory cortex (Näätänen et al., 2007; Näätänen et al., 2004). The presentation of a stimulus  
16 that deviates in one or more features from the regular stimuli creates discordance between the  
17 incoming information and the memory trace, eliciting the MMN. This occurs even if the participant is  
18 not attending to the stimuli, supporting the hypothesis that the MMN functionally reflects an  
19 involuntary attention switch to auditory changes (Näätänen et al., 2007; Paavilainen, 2013). The  
20 MMN has also been interpreted within the predictive coding framework (Friston, 2003, 2005).  
21 Predictive coding postulates that the brain creates neural predictions about future events by  
22 compiling statistical regularities from incoming stimuli. The processing of information leading to the  
23 formation of statistical models of the outside world is thought to rely on a hierarchy of brains  
24 structures and mechanisms (Huang & Rao, 2011). The cortex generates top-down predictions that  
25 are then compared with incoming sensory stimuli at the first level, or to a bottom-up input at any  
26 higher level. If there is a discrepancy between the top-down prediction and the bottom-up input, a

1 prediction error occurs. Such prediction error is fed back to the higher levels of the processing  
2 hierarchy and it is used to update the internal model of the environment. The MMN response  
3 corresponds to the prediction error that is modulated by the interplay between the perceptual  
4 response contingent on the deviant stimulus and changes in synaptic sensitivity during perceptual  
5 learning (Garrido et al., 2008; Garrido et al., 2009b).

6 The MMN is generated by a temporofrontal network comprising the bilateral auditory cortex (A), the  
7 bilateral supratemporal gyrus (STG) and the right inferior frontal gyrus (rIFG) (Garrido et al., 2008,  
8 2009a, 2009b). These cortical sources interact with each other hierarchically by changes in the  
9 connectivity within cortical sources and between each other. Initially, the A adapts to repeated  
10 standard stimuli. Then, changes in connectivity between A and the frontotemporal nodes of the  
11 network reflect changes in the precision of the prediction error that is fed from lower sensory levels  
12 to higher levels of the hierarchy responsible for top-down predictions. The MMN results from the  
13 failure of the higher levels of the hierarchy to predict the bottom-up input, which results in changes  
14 of coupling between the sensory and the frontotemporal cortices (Garrido et al., 2008, 2009a,  
15 2009b). The role of the frontotemporal network in the generation of the MMN has been supported  
16 by studies on clinical populations. Specifically, studies on people with frontotemporal dementia have  
17 shown that the disruption of frontotemporal connections impairs the detection of change by the  
18 auditory cortex (Hughes & Rowe, 2013) and frontal brain injury patients have reduced MMN  
19 responses (Alain et al., 1998; Alho et al., 1994).

20 In DS the frontal lobe is smaller and less developed than in controls, hence the potential vulnerability  
21 of the frontal lobe to amyloid accumulation may explain the early onset of executive symptoms in  
22 people with DS in the preclinical stages of AD (Annus et al., 2016; Lautarescu et al., 2017; Neale et  
23 al., 2018). On the basis that the MMN is generated by frontal and supratemporal cortices, we  
24 hypothesised that changes across age in the MMN may reflect accelerated ageing and be associated  
25 with age-related cognitive decline in people with DS. Furthermore, the independence that the MMN  
26 has from attention makes it a suitable measure in DS who experience impaired attention (Lott &

1 Dierssen, 2010). To investigate this, participants with DS and age-matched TD controls were  
2 presented frequent and deviant tones during EEG recording as well as being administered  
3 neuropsychological tests sensitive to age-related cognitive decline. After one year, the same  
4 participants with DS were re-administered the neuropsychological test. Specifically, we hypothesized  
5 that increasing age predicted smaller MMN amplitudes and longer latencies in both groups with a  
6 stronger effect in DS compared to TD participants. Furthermore, we hypothesized that the MMN at  
7 the first timepoint would predict cognitive decline in DS as measured by comparison in  
8 neuropsychological test scores between the time points one year apart.

9

## 10 **2. Materials and Methods**

11 The present study was conducted with both a cross-sectional and a longitudinal phase. In the cross-  
12 sectional phase both DS and aged-matched Typically Developing (TD) participants took part to the  
13 EEG session (described in section 2.4) and were administered neuropsychological and cognitive tests  
14 (described in section 2.3), as well as having a hearing check. In the longitudinal phase, only the  
15 participants with DS were re-tested on neuropsychological tests to determine whether there had  
16 been cognitive decline since time point 1 (described in section 2.4).

17

### 18 **2.1. Participants in the cross-sectional phase**

19 Thirty-six adults with DS aged 20 years or older were recruited into the study. Participants with DS  
20 were predominantly identified through their previous participation in the ‘Defeat Dementia in  
21 Down’s Syndrome’ research programme. Participants who were not already known to the research  
22 group were made aware of the study through adverts by the Down’s Syndrome Association (DSA).  
23 Thirty-nine age- and gender-matched TD control participants were also recruited into the study,  
24 identified through the Join Dementia Research (JDR) database. Ethical approval to conduct the study  
25 (reference 14/LO/1411) was given by the National Research Ethics Service (NRES). The Committee

1 had the expertise to assess studies that might include individuals who lacked capacity to consent to  
2 participation in research.

3

## 4 **2.2. Participants in the longitudinal phase**

5 Thirty-four adults with DS who completed the initial EEG assessment were re-approached 10-14  
6 months later (mean 12 months) for a follow-up cognitive assessment using the participant-based  
7 CAMCOG-DS, and for an informant-based diagnostic interview with the parent or carer using the  
8 CAMDEX-DS.

9

## 10 **2.3. Clinical assessments**

### 11 **2.3.1. Hearing checks**

12 As the EEG paradigms involved the presentation of auditory stimuli hearing loss was screened for  
13 with the Siemens HearCheck Navigator, which has been validated as an appropriate tool (Fellizar-  
14 Lopez et al., 2011). This HearCheck Navigator sequentially delivers tones at two frequencies  
15 (1000Hz, 3000Hz) and a range of decibels (20dB – 75dB) and participants who did not hear tones of  
16 1000Hz and 3000Hz at 55dB were to be excluded from the study, although no-one with this degree  
17 of hearing loss was identified.

18

### 19 **2.3.2. Intellectual Functioning**

20 The Kaufman Brief Intelligence Test-2 . (KBIT-2; Kaufman & Kaufman, 2014) was used to estimate  
21 intellectual functioning. The KBIT-2 provides verbal (VIQ) and nonverbal IQ (NIQ) scores. Normally,  
22 these are to produce a Composite IQ score. Where the VIQ and NIQ discrepancy is too large (see  
23 Table B 7, *ibid.*), Verbal IQ on its own is used.

24

1           **2.3.3. Dementia screening in TD**

2   The Addenbrooke’s Cognitive Examination Revised (ACE-R; Mioshi et al., 2006) was used to screen  
3   control participants for dementia. Control participants were excluded at the lower cut-off of 88 or  
4   below. No control participants were excluded from this study based on their ACE-R assessment.

6           **2.3.4. Cognitive decline in DS**

7   The Cambridge Examination for Mental Disorders of Older People with Down's Syndrome and Others  
8   with Intellectual Disabilities (CAMDEX-DS; Fonseca et al., 2018; Holland & Ball, 2009; Roth et al.,  
9   1986) was developed as a tool to aid the diagnosis of dementia in people with intellectual disability.  
10   It includes a cognitive assessment component (CAMCOG-DS) and an informant interview (CAMDEX-  
11   DS). The CAMCOG-DS assesses seven functional domains affected by the presence of AD:  
12   orientation, language, memory, attention, praxis, abstraction, and perception. The total possible  
13   score is 109.

14   The CAMDEX-DS informant interview (Fonseca et al., 2018) was used to identify functional decline  
15   and to structure the diagnosis of dementia in people with DS based on reported change across  
16   specific functional domains. A dementia diagnosis from the CAMDEX-DS is a clinical decision based  
17   on parent or carer reports of the participant’s best level of cognitive functioning and evidence of  
18   functional decline. The interviewee is selected on the basis of having had regular contact with the  
19   participant for at least six months prior to the assessment. In this study the diagnosis of dementia in  
20   a participant with DS was made by an experienced psychiatrist reviewing, blind to the age, gender  
21   and previous diagnostic status of the participant, the data collected using CAMDEX-DS informant  
22   interview with the parent or carer.

23

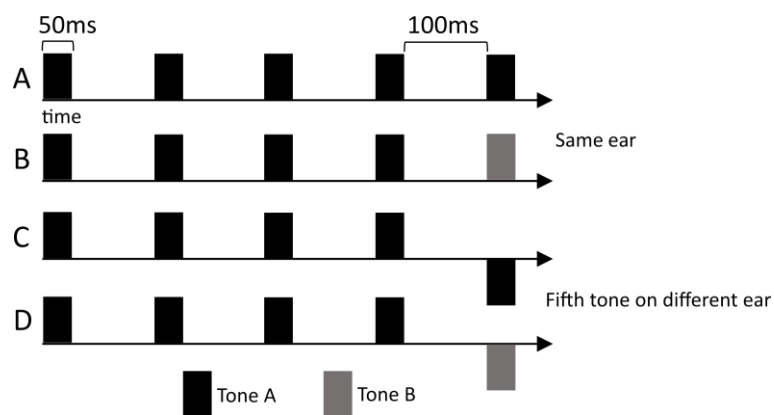
## 1           2.4. EEG assessment

### 2                   2.4.1. Task paradigm

3    A modified version of the auditory global-local paradigm (Bekinschtein et al., 2009) was used,  
4    previously described in Chennu et al. (2013). consisting of the presentation of tones at a volume that  
5    the participants indicated as audible and comfortable. Each tone lasted 50ms and was presented in  
6    group sequences of five tones with 100ms intervals in between each tone. The five-tones group  
7    consisted of either local *standard* sequences in which five tones of identical pitch (AAAAA or BBBBB)  
8    were presented, or local *deviant* sequences in which the first four tones were identical and the last  
9    tone was of a different pitch (AAAAB or BBBBA). The tones themselves were mixtures of three  
10   sinusoids of either type: A (500, 1000, and 2000 Hz), or B (350, 700, and 1400 Hz). The tone  
11   sequences were presented either entirely monaurally (AAAAA, BBBBB, AAAAB, BBBBA), to the left or  
12   right ear, or predominantly monaurally with the final tone presented on the opposite ear (AAAAA,  
13   BBBBB, AAAAB, BBBBA. See Fig. 1).. Tone sequences were presented in experimental blocks, and  
14   each block included approximately 160 sequences and was counterbalanced by the dominant tone  
15   type (A or B) and the laterality of monaural tone delivery (left or right). There were two block types.  
16   In block type X, local *deviant* sequences were 14.25% of the total sequences, the rest being local  
17   standards. In block type Y, local *deviant* sequences were 85.75% of the total sequences.  
18   At the beginning of the testing session, participants were informed that they were about to hear  
19   groups of sounds. Participants were asked to listen carefully to the groups of sounds because at the  
20   end of each block they would be asked: “can you tell me what group of sounds you heard a lot?”  
21   and “can you tell me what group of sounds you heard sometimes?”. Participants’ answers were  
22   recorded at the end of each block. The purpose of the questioning was to maintain participants’  
23   attention on the groups of sounds. At the end of each block, participants were also asked about their  
24   arousal levels on a scale of 1-10 (1 – Asleep to 10 – Fully awake), and attentiveness (1 – Mind  
25   wandering/unattentive to 10 – Fully attentive to stimuli). Participants took a break between each  
26   block at a length of their choosing. A total of 8 experimental blocks (4 Y blocks and 4 X blocks) were



1 presented, with total testing time, including breaks and questioning, taking an average of 40  
2 minutes.  
3 The global-local paradigm is measure prediction error responses to two hierarchical levels of  
4 deviation: (i) global – between trial variance: which requires the participants to report rare  
5 sequences of tones; (ii) local – within trial variance: the automatic detection of individual deviant  
6 tones. As shown in Chennu et al. (2013), the perception of global deviance elicits an attention-  
7 dependent P300 response, whereas the detection of local deviance elicits a MMN. This paper is  
8 focused on the local effect, which elicits an MMN response, even in the absence of explicit attention.  
9



10

11 **Figure 1 - Paradigm:** Examples of five tones sequences. In *standard* sequences, tones were all of the same pitch  
12 (A and C). In *deviant* sequences, the first four tones were identical and the fifth was of a different pitch (B and  
13 D). Sequences could either be presented monaurally on the same ear (A and B) or interaurally with the fifth  
14 tone presented on the opposite ear (C and D). Tones were 50ms long and were spaced by 100ms silence.

15

#### 16 **2.4.2. Data acquisition**

17 Data were recorded with 129-channels EEG gel nets (EGI's HydroCel Geodesic Sensor Net). Testing  
18 was conducted in an electrically shielded room, using the Net Amps 300 amplifier (Electrical  
19 Geodesics). The auditory stimuli were presented to participants using Psychtoolbox-3 (Delorme &  
20 Makeig, 2004) running on MATLAB; at a comfortable volume as judged by participants; binaurally  
21 through Etymotics ER-3A earphones. The EEG data was recorded onto NetStation Version 5 (Magstim

1 EGI). The recording parameters for collection were: <100KOhms impedance, 500 Hz sampling rate,  
2 and referenced to the vertex.

3

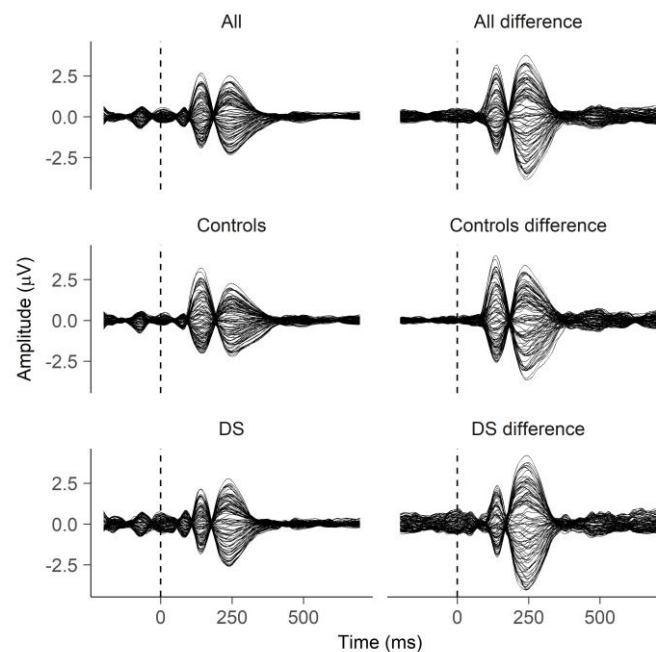
#### 4 **2.4.3. Data preprocessing**

5 Pre-processing was run in MATLAB using custom functions along with EEGLAB toolbox (Chennu et  
6 al., 2013). Channels of the outer circle of the net were excluded from the pre-processing as they  
7 carry little neural information and mostly muscle artifacts (Chennu et al., 2013). Continuous data  
8 were low-pass filtered offline at 20Hz (Garrido et al., 2008; Jacobsen & Na, 2005; Näätänen et al.,  
9 2004). Epochs were then selected from -200ms to 700ms relative to the onset of the fifth tone in  
10 each sequence and baseline corrected -200ms to 0ms relative to the 5th tone onset. Bad electrodes  
11 were detected by a quasi-automated procedure: noisy channels were identified by calculating their  
12 normalized variance and then manually rejected or retained by visual inspection. Rejected channels  
13 were excluded from ICA decomposition, which was used to remove eyeblinks and lateral saccades.  
14 Robust detrending was applied on the ICA corrected signal to correct for slow drifts. Subsequently,  
15 rejected channels were interpolated and epochs exceeding  $\pm 150\mu\text{V}$  were marked and then discarded  
16 following further visual inspection and the signal was then re-referenced to the average. An average  
17 of 6% of the trials were rejected (range = 0-36%). The Global Field Power (GFP) and the ERP was  
18 obtained for *standard* and *deviant* conditions and the MMN *difference waves* (dERP and dGFP) were  
19 obtained by subtracting the waveform of *standard* epochs from the waveforms of *deviant* epochs  
20 and were baseline corrected after the subtraction. The GFP was obtained by calculating the point-  
21 by-point standard deviation of the ERP voltage and was then baseline corrected.

22 Because the MMN has not yet been characterised in DS, the peak of the MMN was initially identified  
23 by the inspection of butterfly plots (Fig. 2) and thereby identified as occurring at 140ms after  
24 stimulus onset. In order to select the relevant electrodes for ERP analysis for each group, the cluster-  
25 permutation algorithm (run with FieldTrip toolbox; Maris & Oostenveld, 2007) was run separately  
26 for controls and DS contrasting *deviant* and *standard* trials. Two-tailed dependent t-tests were used

1 to evaluate the effect. At the cluster level, the null distribution was generated using the Monte Carlo  
2 method and the critical value used for thresholding the sample-specific T-statistics was set at  $\alpha =$   
3 0.01. Separately for both groups, the relevant electrodes to be kept for further analysis were  
4 selected as the electrodes forming a significant negative cluster between 120ms and 160ms after  
5 stimulus onset (Fig. 3) and the ERP MMN peak detection was performed on the average of the  
6 selected electrodes. For each individual participant the peak corresponding to the MMN was defined  
7 as the most negative value between 120ms and 160ms for the ERP of *standard* and *deviant* trials and  
8 the dERP. For the GFP of *standard* and *deviant* trials and the dGFP, the MMN was defined as the  
9 most positive value between 120ms and 160ms. Both amplitudes and latencies were extracted for  
10 statistical analyses.

11 **Figure 2 – Butterfly plots:** Grand average of all electrodes in DS, controls and all participants for both *standard*

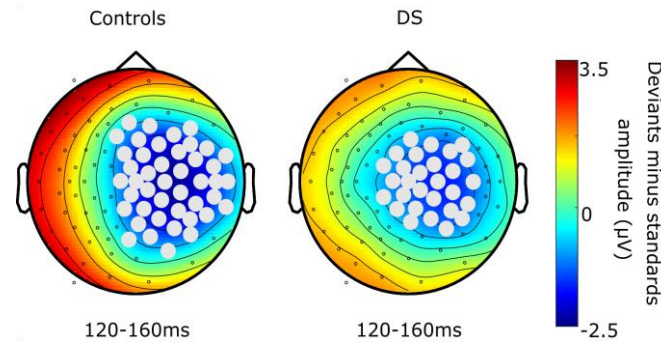


12 and *deviant* conditions combined (first column). ERP of all electrodes in DS, controls and all participants of the  
13 *difference waveforms* (second column).

14

15

16



1 **Figure 3 – MMN electrodes:** In grey are the electrodes selected to obtain the MMN ERP in controls and DS. The  
2 electrodes significant between 120-160ms ( $\alpha \leq 0.01$ ) were selected following cluster permutation analysis  
3 contrasting *standard* and *deviant* trials. The colour bar represent the amplitude of the difference wave obtained  
4 subtracting the waveform of *standards* to the waveform of *deviants*.

5

#### 6 **2.4.4. Cross-sectional statistical analyses**

7 To first assess whether the topography of the ERP MMN differs between the two groups, cluster-  
8 based permutations were run for the ERP regardless of condition (merging *standard* and *deviant*  
9 trials) and for the dERP. Two-tailed dependent t-tests were used to evaluate the effect between  
10 50ms and 250ms after stimulus onset. At the cluster level the null distribution was generated using  
11 the Monte Carlo method and the critical value used for thresholding the sample-specific T-statistics  
12 was set at  $\alpha = 0.01$ .

13 The Shapiro-Wilk test for normality was run on all measures and revealed that dERP and dGFP  
14 amplitudes and latencies were normally distributed and were retained for all further analyses.  
15 However, amplitudes and latencies of ERP and GFP were not normally distributed (all p-values  $\leq$   
16 0.001) and therefore were omitted from multiple regression analysis.

17 To assess whether the auditory response to the fifth tone differed between the two groups  
18 regardless of condition, ERP and GFP amplitudes and latencies were compared using the non-  
19 parametric Wilcoxon rank sum test with continuity correction and to assess whether the MMN  
20 differed between the two groups, dERP and dGFP amplitudes and latencies were compared using  
21 two-tailed independent samples t-tests. Finally, multiple regressions were fitted to the data and  
22 model comparison was conducted to assess whether age predicted changes in MMN across the two

1 groups. Models were built with dERP and dGFP amplitudes and latencies as dependent variables,  
2 and with the factors *Group* and *Age* as predictors (models in Formula 1). Models *a* to *d* were  
3 compared in the order exposed in Formula 1 using the likelihood ratio test (*lrtest()* in R). Bayes  
4 Factors (BF) were also calculated with 50% prior (*bayesfactor\_models()* in R). In case of a significant  
5 *Group* and *Age* interaction, linear models for the two separate groups were fitted and contrasted to  
6 the intercept (models *e* and *f* in Formula 1).

7

8 a)  $y \sim 1$

9 b)  $y \sim Age$

10 c)  $y \sim Age + Group$

11 d)  $y \sim Age * Group$

12 e)  $y_{group} \sim Age_{group}$

13 f)  $y_{group} \sim 1$

14

15 **Formula 1** Linear models were fitted and compared to assess whether age predicted changes in  
16 MMN across the two groups. *y* is either amplitude or latency of dGFP or dERP. Model a) is the  
17 intercept model; model b) expresses the relationship between physiological measures and *Age* as  
18 only predictor; model c) includes the main effects of predictors *Age* and *Group*; model d) includes  
19 the main effects of the predictors *Age* and *Group* as well as their interaction; model e) expresses the  
20 relationship between the dependent variable of only one group (controls or DS) and age; and model  
21 f) is the intercept model of data from only one group.

22

#### 23 **2.4.5. Longitudinal statistical analyses**

24 The analyses focused on the difference between participants' CAMCOG-DS scores at the cross-  
25 sectional phase (Time 1; T1) and the longitudinal phase (Time 2; T2). The total CAMCOG-DS  
26 difference score (dCAMCOG) was calculated as the score at Time 2 minus the score at Time 1. To test

1 whether performance at the CAMCOG at T2 decreased compared to the performance at T1, paired t-  
2 test was run on CAMCOG scores at the two timepoints. To assess whether changes in CAMCOG-DS  
3 scores over time correlate with age, a two-tailed Spearman's Rank-Order correlation was run  
4 between age and dCAMCOG. The Spearman's test was chosen because research has suggested that  
5 the relationship between age and amyloid deposition is not linear (Holland et al., 1998). The BF was  
6 calculated for such correlation as well.  
7 Finally we tested whether amplitude and latency of dGFP and dERP at T1 predicted changes in  
8 CAMCOG-DS scores over time. We built models with *amplitude* and *latency* of dGFP and dERP as  
9 predictors, *IQ* as covariate and dCAMCOG scores as dependent variable. To assess the relationship  
10 between variables, linear and curvilinear quadratic models (formula 2) were compared using  
11 likelihood ratio tests and BF were calculated.

12

- 13 a)  $dCAMCOG \sim 1$
- 14 b)  $dCAMCOG \sim x$
- 15 c)  $dCAMCOG \sim x + IQ$
- 16 d)  $dCAMCOG \sim x + x^2 + IQ$
- 17 e)  $dCAMCOG \sim x + x^2$

18

19 **Formula 2** Linear (a,b,c) and curvilinear (d,e) models compared to assess whether physiological  
20 measures predicted changes in CAMCOG scores (total score and subscales) over time in DS.  $x$  is  
21 either the amplitude or latency of dGFP or dERP.

22

### 23 3. Results

#### 24 3.1. Demographics of the cross-sectional phase

25 Independent samples t-tests for Equality of Means were conducted, with Equality of Variances  
26 assumed ( $p > 0.05$ ) to determine that DS and controls did not significantly differ in age ( $p = 0.15$ ).

1 Equality of Variance was not assumed ( $p \leq 0.05$ ) for group comparisons on hearing acuity, which was  
2 determined using the number of tones identified from the Siemens Hear Check Screener. However,  
3 an independent samples t-test for the Equality of Means found that the number of tones identified  
4 did not significantly differ between groups ( $p = 0.12$ ). A chi-square test of independence was  
5 performed to examine the relationship between gender (male, female) and group (DS, controls) and  
6 found no significant relationship:  $\chi^2(1, 75) = 2.24, p = 0.134$ . Please see table 1 for more details.

	N	males	females	mean age (years)	SD	age range	mean number of tones heard	SD
<b>DS</b>	36	21	15	36.81	9.22	22-55	9.83	1.8
<b>controls</b>	39	17	22	39.89	11.29	20-59	10.33	0.70

7  
8 **Table 1** Participant demographics: sex, age and hearing acuity.

9  
10 Thirty six adults with DS, aged 22-55 years ( $M = 37.3, SD = 9.39$ ) completed the cross-sectional  
11 neuropsychological and EEG testing schedule. Of the 36 adults, 3 had a dementia diagnosis and 21  
12 were male. At the cross-sectional phase, the participants' total CAMCOG score ranged from 55-105  
13 points ( $M = 83.1, SD = 13.7$ ). For four participants, KBIT-2 Composite IQ scores could not be used;  
14 Verbal IQ scores ranged from 70-80 points ( $M = 77, SD = 4.7$ ). For the remaining 32 participants,  
15 Composite IQ scores range from 40-88 points ( $M = 53.7, SD = 12.3$ ). The age- and gender-matched  
16 controls were aged 20-58 years old ( $M = 40.08, SD = 11.43$ ), and 17 were male. The lowest  
17 Composite IQ score, as assessed by the KBIT-2 was 90 ( $M = 115.76, SD = 22.27$ ); the lowest  
18 dementia-screening score, as assessed by the ACE-R, was 88. Therefore, the group is considered to  
19 be appropriate as TD controls for this study.

### 21 **3.2. Cross-sectional phase**

22 The cluster permutation run on the ERP regardless of condition between 50ms and 250ms revealed  
23 a difference between controls and DS ( $p \leq 0.01$ ) at frontal and parietal areas (Fig. 4). The Wilcoxon

1 rank sum test was statistically significant on amplitude ( $W = 3488, p \leq 0.01, r = 0.24$ ) and latency ( $W$   
 2  $= 3491.5, p \leq 0.01, r = 0.24$ ) of the GFP and latency of the ERP ( $W = 3446, p \leq 0.01, r = 0.23$ ). DS had  
 3 smaller amplitude and shorter latency of GFP peaks and shorter latency of ERP peaks than controls  
 4 (Table 2, Fig. 5). Moreover, when testing for the effect of the MMN in the same time window there  
 5 was difference between controls and DS ( $p \leq 0.01$ ) most pronounced at the right central electrodes  
 6 (Fig. 4). In DS the dGFP ( $t_{(71.97)} = 4.88, p \leq 0.001, d = 1.13$ ) and dERP ( $t_{(71.64)} = -2.95, p \leq 0.01, d = -0.69$ )  
 7 peak amplitudes were smaller than in controls. T-tests run on latencies did not show any significant  
 8 difference in dGFP peaks and only a marginal difference in dERP peaks ( $t_{(71.88)} = -1.94, p = 0.06, d = -$   
 9  $0.45$ ) with DS showing longer latencies (Table 2, Fig. 5).

10

	ERP amplitude	ERP latency	GFP amplitude	GFP latency
Controls	-1.32 (0.92)	148.74 (11.43)	1.13 (0.99)	148.21 (12.04)
DS	-1.29 (0.97)	143.69 (11.62)	0.67 (0.81)	142.36 (12.92)
	dERP amplitude	dERP latency	dGFP amplitude	dGFP latency
Controls	-1.71 (0.67)	136.74 (9.41)	1.71 (0.64)	136.76 (9.41)
DS	-1.25 (0.68)	140.78 (8.54)	1.00 (0.60)	137.83 (10.04)

11

12 **Table 2** Mean and standard deviations (in brackets) of latency (ms) and amplitudes (SD of  $\mu V$ ) of ERP  
 13 and GFP peaks in the two groups regardless of condition and in difference waves.

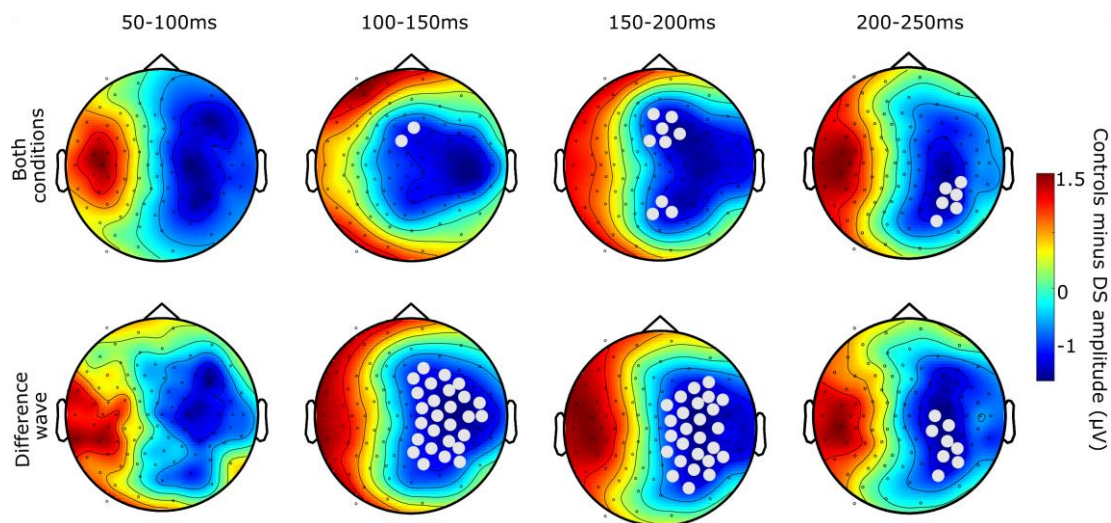
14

15 Comparing the models that predicted dGFP amplitudes based on *Age* and *Group*, the model with  
 16 *Group* and *Age* (model *c* in Formula 1) provided a significant improvement compared to the model  
 17 (model *b* in Formula 1) with *Age* as only predictor ( $\chi^2_{(1)} = 20.78, p \leq 0.001, \lambda = -68.84, BF_{cb} = 3780$ ).  
 18 The model with the interaction between *Age* and *Group* (model *d* in Formula 1) was significantly  
 19 better ( $\chi^2_{(1)} = 7.54, p \leq 0.01, \lambda = -65.07, BF_{db} = 5.05$ ) than the model with only the main factors  
 20 (model *c*). Model *d* explained a significant amount of the variance of dGFP amplitude changes with  
 21 age ( $F_{(3,70)} = 11.02, p \leq 0.001, R^2 = 0.32, R^2_{Adj} = 0.29$ ). Of the coefficients, only the interaction  
 22 statistically predicted dGFP amplitude ( $B = -0.04, SE = 0.01, t_{(70)} = -2.74, p \leq 0.01$ ). Confirming that



1 age alone was not predictive of dGFP amplitudes, the  $BF_{ba} = 0.14$  between model b and the intercept  
2 (model a) was obtained. The linear model fitted only on TD data (model e, Formula 1) was not  
3 significant and did not differ from the intercept (model f, Formula 1) as confirmed by  $BF_{ef} = 0.54$ ,  
4 suggesting that Age is not a good predictor of dGFP amplitude in TD. On the other hand, the model  
5 fitted on DS data (model e) was significant ( $F_{(1,34)} = 5.57$ ,  $p \leq 0.05$ ,  $R^2 = 0.14$ ,  $R^2_{Adj} = 0.12$ ). The  
6 predictor Age significantly predicted dGFP amplitude in DS with smaller amplitudes in older  
7 individuals ( $B = -0.02$ ,  $SE = 0.01$ ,  $t_{(35)} = -2.36$ ,  $p \leq 0.05$ ) and the model differed from the intercept ( $\chi^2_{(1)}$   
8  $= 5.46$ ,  $p \leq 0.05$ ,  $\lambda = -29.28$ ,  $BF_{ef} = 2.56$ ). The loglikelihood test on dGFP latencies found no  
9 improvements of the alternative models compared to the intercept. When running incremental  
10 bayesian model comparisons, the simpler model was always probable with a greater degree of belief  
11 than the alternative, more complex model ( $BF_{ba} = 0.21$ ,  $BF_{cb} = 0.14$ ,  $BF_{db} = 0.12$ ).

12



13

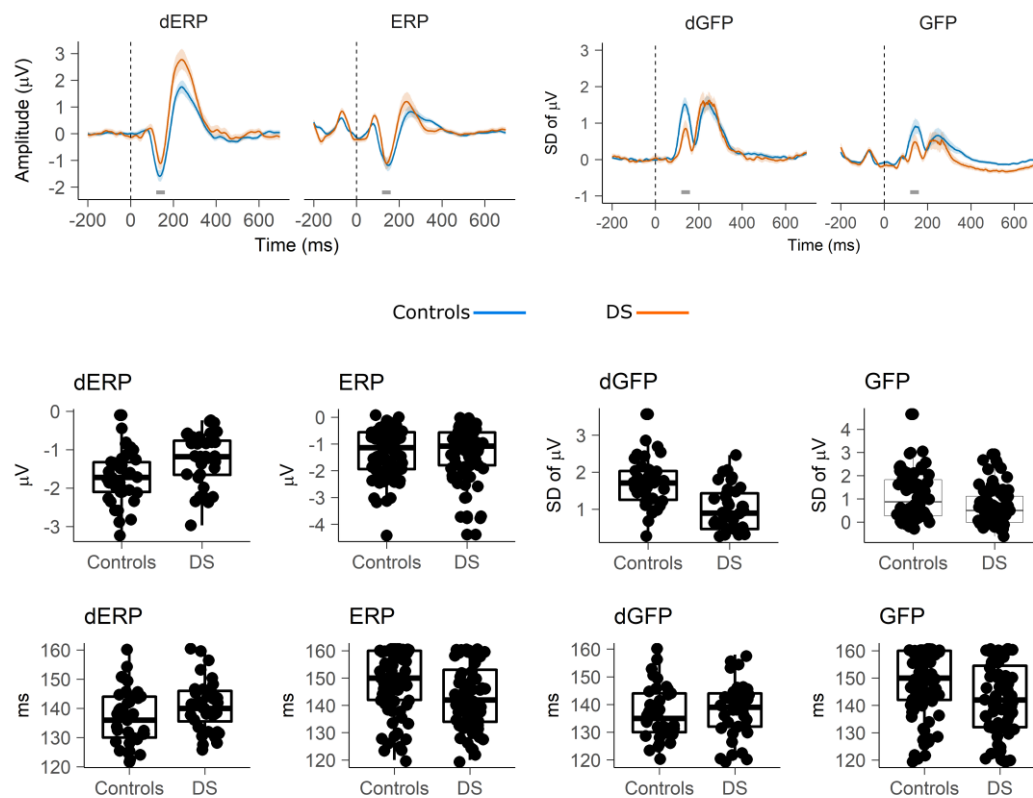
14 **Figure 4 – Cross-sectional cluster permutation:** Results of cluster permutation analysis between 50-250ms. In  
15 the top row are plotted the results of the analysis of the ERP of *standard* and *deviant* conditions combined  
16 contrasting DS and controls. In the bottom row are plotted the results of the analysis of the *difference waves* DS  
17 and controls. Significant electrodes ( $\alpha \leq 0.01$ ) are marked in grey. The colour bar represent the amplitude of the  
18 waveform obtained subtracting the waveform of DS to the waveform of controls.

19

1 Regarding dERP, comparing the models that predicted variations in amplitudes based on *Age* and  
2 *Group*, the model with *Group* and *Age* (model *c* in Formula 1) provided a significant improvement to  
3 the model (model *b* in Formula 1) with *Age* as only predictor ( $\chi^2_{(1)} = 8.45$ ,  $p \leq 0.01$ ,  $\lambda = -75.00$ ,  $BF_{cb} =$   
4  $7.96$ ). The model with the interaction between *Age* and *Group* (model *d* in Formula 1) was  
5 significantly better ( $\chi^2_{(1)} = 11.01$ ,  $p \leq 0.001$ ,  $\lambda = -69.50$ ,  $BF_{db} = 28.55$ ) than the model with only the  
6 main factors (model *c*). Model *d* explained a significant amount of the variance of dERP amplitude  
7 changes with age ( $F_{(3,70)} = 7.04$ ,  $p \leq 0.001$ ,  $R^2 = 0.23$ ,  $R^2_{Adj} = 0.20$ ). In the model, the predictor *Group*  
8 ( $B = -1.42$ ,  $SE = 0.58$ ,  $t_{(70)} = -2.43$ ,  $p \leq 0.05$ ) and the *Group* and *Age* interaction ( $B = 0.05$ ,  $SE = 0.01$ ,  $t_{(70)}$   
9  $= 3.35$ ,  $p \leq 0.01$ ) significantly predicted dERP amplitude. The predictor *Age* was not significant but  
10 approached significance ( $B = -0.02$ ,  $SE = 0.01$ ,  $t_{(70)} = -1.91$ ,  $p = 0.06$ ). To further investigate the role of  
11 age regardless of group, the  $BF_{ba} = 0.12$  between model *b* and the intercept (model *a*) was obtained.  
12 The linear model fitted only on control data (model *e*, Formula 1) was not significant and did not  
13 differ from the intercept (model *f*, Formula 1) as confirmed by  $BF_{ef} = 0.96$ . On the other hand, the  
14 model fitted on DS data (model *e*) was significant ( $F_{(1,34)} = 7.94$ ,  $p \leq 0.01$ ,  $R^2 = 0.19$ ,  $R^2_{Adj} = 0.17$ ). The  
15 predictor *Age* significantly predicted dERP amplitude in DS ( $B = 0.03$ ,  $SE = 0.01$ ,  $t_{(35)} = 2.82$ ,  $p \leq 0.01$ )  
16 and the model differed from the intercept ( $\chi^2_{(1)} = 7.56$ ,  $p \leq 0.01$ ,  $\lambda = -33.00$ ,  $BF_{ef} = 7.31$ ). The  
17 loglikelihood test on dERP latency showed that model *c* with the main factors had better fit than  
18 model *b* ( $\chi^2_{(1)} = 5.27$ ,  $p \leq 0.05$ ,  $\lambda = -264.10$ ,  $BF_{cb} = 1.62$ ). Model *c* explained a significant amount of the  
19 variance of dERP latency ( $F(2,71) = 4.41$ ,  $p \leq 0.05$ ,  $R^2 = 0.11$ ,  $R^2_{Adj} = 0.09$ ) and both *Age* ( $B = 0.22$ ,  $SE =$   
20  $0.10$ ,  $t_{(71)} = 2.21$ ,  $p \leq 0.05$ ) and *Group* ( $B = 4.72$ ,  $SE = 2.06$ ,  $t_{(71)} = 2.29$ ,  $p \leq 0.05$ ) were significant  
21 predictors of latency. Hence, the data showed that latency slowed down as a function of age in both  
22 groups. To further explore the role of age, model *b* was compared against the intercept and a  $BF_{ba} =$   
23  $0.64$  showed only anecdotal evidence for model *b*. Multiple regressions are plotted in Fig. 6.

24

25



1 **Figure 5 – Cross-sectional results:** Waveforms (top row), boxplots representing peak amplitudes (second row)  
 2 and peak latencies (bottom row) of dERP (first column), ERP regardless of condition (second column), dGFP (third  
 3 column), and GFP regardless of condition (fourth column) of controls and DS. In the waveform plots, the grey  
 4 segment represents the 120-160ms window in which the peaks have been identified, shading represents 95%  
 5 confidence intervals.

6

### 7 **3.3. Demographics of the longitudinal phase**

8 Thirty-four of the 36 adults with DS completed both the initial (cognitive and EEG) and the follow-up  
 9 (cognitive only) assessments. One participant was deceased and one participant was excluded

10 because had fulfilled criteria for “uncooperative behavior”, “silly behavior” and “flat affect”. Of the

11 34 adults, 3 had a dementia diagnosis at time 1 (T1), 20 were male and 32 were right handed. No

12 participants transitioned to an AD diagnosis between T1 and T2. Table 3 provides more demographic

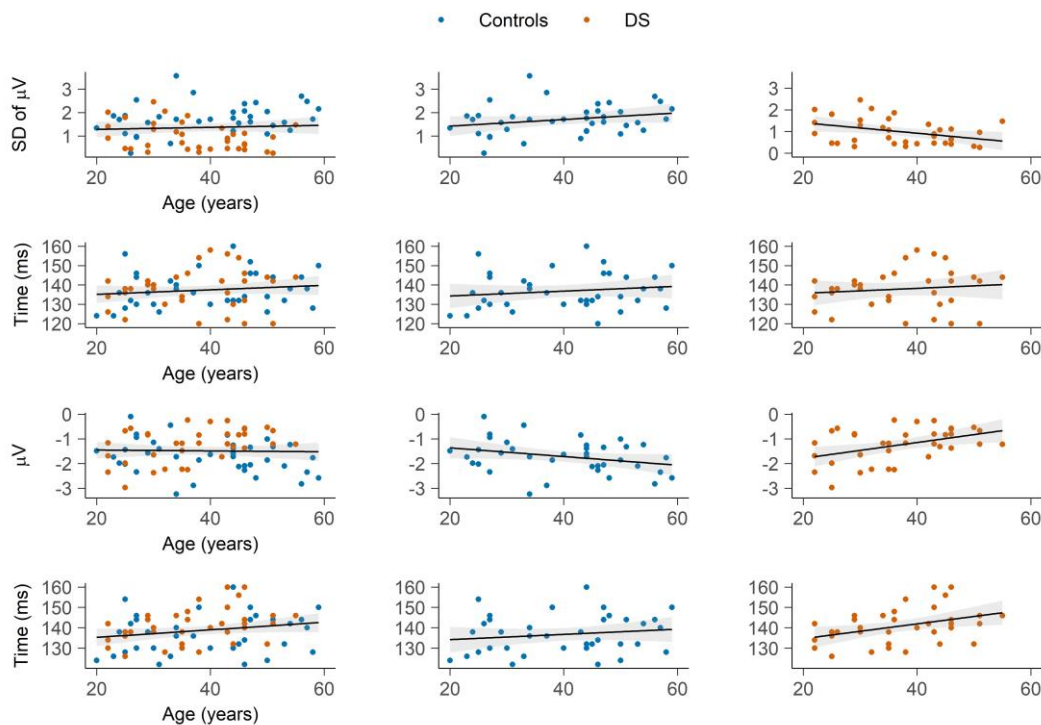
13 and cognitive detail for the cognitive follow-up of participants.

14

	min	max	mean	SD
<b>T1 age (years)</b>	22	55	37.6	9.4
<b>T1 total CAMCOG score</b>	58	105	83.4	14.0

<b>T2 total CAMCOG score</b>	48	104	81.4	15.1
<b>T2-T1 total CAMCOG score</b>	-17	5	-2.0	4.7

1 **Table 3** Demographics of the longitudinal phase participants. T1 represents time 1 (initial  
 2 assessment), T2 represents time 2 (follow-up assessment). SD is standard deviation from the mean.



3  
 4  
 5 **Figure 6 – Prediction of age:** Fitted linear models with dGFP amplitude (first row), dGFP latency (second row),  
 6 dERP amplitude (third row), and dERP latency (fourth row) as dependent variable and *age* as predictor. In the  
 7 second and third column, the linear models have been plotted separately for the *group* factor so that to illustrate  
 8 the interaction between *age* and *group* predictors. Shading represents 95% confidence intervals.

9  
 10 **3.4. Longitudinal phase**

11 Scores on the CAMCOG at T2 were significantly lower than scores at T1 ( $t_{(34)} = 2.51, p \leq 0.05$ , Cohen's  
 12  $d = 0.42$ ). The Spearman's Rank-Order correlation between dCAMCOG and age was not significant  
 13 ( $\rho(33) = -0.16, p = 0.36, BF_{10} = 1.07$ , Fig. 7). Therefore, age was considered no further in the following  
 14 analyses. The 34 participants' total CAMCOG difference scores ranged from -17 to 5 points with a  
 15 mean change of -2.06 points (SD = 4.77 points). Sequentially comparing the models reported in

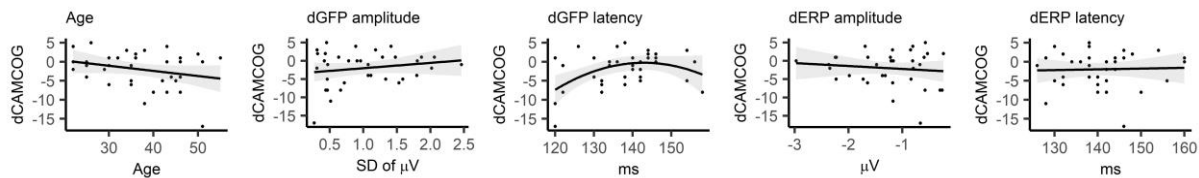
1 Formula 2 with dGFP amplitude as predictor, no model was a significant improvement over the  
 2 preceding model ( $BF_{ba} = 0.31$ ,  $BF_{cb} = 0.17$ ,  $BF_{dc} = 0.21$ ,  $BF_{de} = 0.17$ ), suggesting that dGFP amplitude  
 3 was not a predictor of cognitive decline as measured by dCAMCOG scores. The same model  
 4 comparison on models with dGFP latency as predictor, showed that the curvilinear model *d* was  
 5 significantly better than the linear model *c* (Loglikelihood = -98.67,  $\chi^2(1) = 5.83$ ,  $p \leq 0.05$ ,  $BF_{dc} = 3.11$ ).  
 6 However, model *d* did not have a significantly better fit than model *e*. Therefore model *e* was kept as  
 7 the chosen model being a simpler model. Model *e* was statistically significant ( $F_{(2,32)} = 4.79$ ,  $p \leq 0.05$ ,  
 8  $R^2 = 0.23$ ,  $R^2_{Adj} = 0.18$ ) and both the linear ( $B = 3.87$ ,  $SE = 1.60$ ,  $t_{(32)} = 2.42$ ,  $p \leq 0.05$ ) and quadratic ( $B =$   
 9  $-0.01$ ,  $SE = 0.006$ ,  $t_{(32)} = -2.33$ ,  $p \leq 0.05$ ) predictors were significant in the model (Fig. 7), which  
 10 suggested that there is a nonlinear relationship between dGFP latencies and cognitive decline as  
 11 measured by dCAMCOG scores. Specifically, bigger cognitive decline (smaller dCAMCOG scores)  
 12 predicted shorter and longer latencies while intermediated dCAMCOG scores predicted intermediate  
 13 latencies. No model was a significant improvement over the preceding model in models with dERP  
 14 amplitude as predictor ( $BF_{ba} = 0.21$ ,  $BF_{cb} = 0.17$ ,  $BF_{dc} = 0.17$ ,  $BF_{de} = 0.17$ ) and in models with dERP  
 15 latency as predictor ( $BF_{ba} = 0.17$ ,  $BF_{cb} = 0.17$ ,  $BF_{dc} = 0.18$ ,  $BF_{de} = 0.17$ ).  
 16 The curvilinear quadratic model was then fit to dGFP latency data parsed in CAMCOG subscales  
 17 where the T2-T1 score to each subscale was set as dependent variable. The BF against the intercept  
 18 was also obtained. The model was not significant for any of the subscales (Table 4).

19

Subscale	M	SD	BF <sub>10</sub>
orientation	-0.03	1.29	0.05
language	0.06	2.71	0.04
memory	0.11	2.91	0.08
attention	-0.23	1.11	0.05
praxis	-0.57	1.61	0.34
perception	0.43	1.15	0.03
abstract thinking	-1.17	2.38	0.07

20 **Table 4** T2-T1 difference scores to the CAMCOG subscales. Means (M) and standard deviations (SD)  
 21 are reported. BFs are calculated comparing the curvilinear model *e* (Formula 2) against the intercept

- 1 (model a in Formula 2). BF are expressed as the alternative model (1) against the denominator
- 2 model (0).



3 **Figure 7 – Prediction of cognitive decline:** Correlation between total dCAMCOG score and age (first plot). Linear  
4 models with dGFP amplitude, dGFP latency, dERP amplitude, and dERP latency as predictors and total dCAMCOG  
5 score as dependent variable (second to fifth plot). Shading represents 95% confidence intervals.

6  
7

#### 8 4. Discussion

9 Individuals with DS experience premature ageing and AD pathology affects nearly the entirety of the  
10 DS population with increasing age (Grothe et al., 2017; Sperling et al., 2013; Teipel et al., 2020). The  
11 prolonged preclinical phase of AD during which time neuropathology is developing indicates the  
12 importance (Näätänen et al., 2004) of identifying early markers of cognitive decline to both enable  
13 the assessment of potential treatments and also to indicate in whom and when treatments once  
14 developed should be started. The present research aims to identify electrophysiological markers of  
15 premature ageing in DS and predictors of cognitive decline.

16 To assess premature ageing in DS, DS and TD age-matched controls were presented sequences of  
17 five tones that could either consist of five identical tones (*standard*) or four identical tones and a  
18 fifth different tone (*deviant*). The contrast between standard and deviant tones generate the MMN  
19 component, which is believed to be a marker for the brain's automatic detection of auditory  
20 regularity violation (Näätänen et al., 2011). The MMN depends on temporo-frontal short-term  
21 memory trace in the auditory cortex (Cheng et al., 2013). Hence, the decline in sensory memory,  
22 perceptual accuracy and the brains' predictive power with ageing is reflected in decreased MMN  
23 response (Näätänen et al., 2011). To assess whether the MMN is a predictor of cognitive decline in  
24 DS, CAMCOG scores were obtained at the same time as the EEG recording (T1) and 10 to 14 months

1 later (T2) for DS participants. The relationship between the MMN at T1 and the CAMCOG difference  
2 score between the two timepoints allowed on the predictive power of the MMN to be studied. Both  
3 traditional ERP and whole scalp GFP techniques were employed to address these research questions.  
4 The MMN is considered an index of cognitive decline in several neuropsychological disorders (Lalo et  
5 al., 2005). However, it has not been extensively studied in participants with DS (Romano et al.,  
6 2016). Hence, we first compared DS and controls in the response elicited by the fifth tone regardless  
7 of condition and in the difference wave (*standard minus deviant*) independently of age. dERP and  
8 dGFP, which directly represents the MMN marker of auditory regularity violation, consistently  
9 showed a reduced MMN response in DS compared to controls (Fig. 5). It is possible that such  
10 difference is driven by age-related reduction in grey matter which is apparent already at 20 years of  
11 age (Näätänen et al., 2011) and that may impair the ability of forming sensory memory traces. The  
12 difference in MMN responses between groups is widespread over central-right electrodes (Fig. 4).  
13 Because interaural stimulation was counterbalanced between left and right ear in both groups, the  
14 topography is not an artifact of stimulus presentation. In fact, it may indicate that DS are mostly  
15 impaired in the involuntary attention switch to auditory change, which has been found to be a right-  
16 lateralised process (Näätänen & Picton, 1987; Tomé et al., 2015).

17 When looking at the response to the fifth tone regardless of condition, the cluster permutation  
18 revealed that the ERP response of DS and controls differed over localized frontal and parietal  
19 electrodes. It is possible that such effect is driven by the response to *deviant* sequences. However, it  
20 is also possible that the cluster permutation detected differences in the N1 component that overlaps  
21 with the MMN (Tomé et al., 2015). The N1 is a bilateral frontocentral component elicited by both  
22 frequent and infrequent stimuli and reflects sensory and perceptual processes (Näätänen & Picton,  
23 1987; Tomé et al., 2015) suggesting that DS may present sensory and perceptual impairment  
24 regardless of abstract detection of regularity violation. We also compared DS and controls on the  
25 ERP peaks that were extracted only from the electrodes that had formed significant clusters when  
26 contrasting *standard* and *deviant* sequences (Fig. 3). Peak comparison yielded no differences in

1 amplitude between DS and controls. It has been suggested that several different components  
2 generated by different cerebral locations and sub-serving different cognitive processes contribute to  
3 a widespread negativity peaking around 150ms (Tomé et al., 2015). The electrodes selected may  
4 have recorded the summation of such processes and did not measure any difference in response  
5 intensity to tones between the two groups. We found key differences in GFP amplitude, where DS  
6 had smaller N1 responses compared to controls. GFP is a whole-scalp measure, so the GFP might  
7 have picked up the group difference at frontal electrodes underlying the same frontal N1 effect  
8 emerged in the cluster permutation analysis. Surprisingly, latencies were reduced in DS compared to  
9 controls in both GFP and ERP. Findings on the N1 latency have been inconsistent (Eggermont, 1988;  
10 Ponton et al., 2000; Tomé et al., 2015), but several studies, which have reported small latency  
11 decreases with advancing age, have attributed shorter N1 to increased synaptic synchronization and  
12 efficiency during brain maturation (Horváth et al., 2007; Kiang et al., 2009; Schiff et al., 2008). This  
13 seems an unlikely scenario in this case.

14 The models predicting dGFP and dERP amplitude as a function of age and group show that amplitude  
15 decreases with age in DS but not in controls. In a predictive coding framework, the results suggest  
16 that the ability of making accurate statistical predictions about the incoming stimuli decreases with  
17 age in DS but not in controls. In DS, the neurodegeneration caused by A $\beta$  depositions over time may  
18 compromise anatomical connections between the nodes of the frontotemporal network, reducing  
19 the connectivity between these areas and compromising accurate prediction. According to models  
20 of the generation of the MMN (Friston, 2003, 2005; Garrido et al., 2008; Garrido et al., 2009a;  
21 2009b), the prediction error represented by the MMN is dependent on both backward (top-down)  
22 and forward (bottom-up) connections between the levels of the network hierarchy. Future studies  
23 should aim at identifying how age-related decay of the MMN response in DS affects these two  
24 directions of connectivity.

25 On the other hand, amplitudes seem not to be affected by the main effect of age. Notably, while the  
26 main factor *Age* was significant when it was the only predictor of dERP amplitude, the BF of 0.64



1 shows that the model cannot be taken as conclusive evidence of age-related MMN decay. The effect  
2 of age on MMN amplitude had been hypothesized for both groups based on the evidence that  
3 attenuated amplitude and longer latencies have been systematically found in normal ageing (Cheng  
4 et al., 2013; Näätänen et al., 2011, 2014). However, in our studies DS and controls had an average  
5 age of 35 and 40 years respectively, while studies assessing the MMN in elderly controls typically  
6 have older participants. It may be that the sensory memory decay in our cohort was not sufficient to  
7 be reflected in changes in the MMN. This is consistent with the hypothesis that at 40 years of age,  
8 DS begin to show abnormal A $\beta$  binding in the brain compared to controls (Annus et al., 2016).  
9 Interestingly, the absence of an effect of age in typically developing controls suggests that variation  
10 in the MMN may be a sensitive measure of accelerated ageing that is able to distinguish between  
11 pathological and normal ageing.

12 In contrast to the results on amplitude, there is no effect on MMN latency. This is not surprising as  
13 evidence for the effect of ageing on MMN latency have been inconsistent (Annus et al., 2016;  
14 Holland et al., 1998; Lautarescu et al., 2017). One interpretation might be that sensory memory in DS  
15 is reduced with age but not necessarily slowed down, sensory information may simply not be  
16 properly encoded. This hypothesis needs further assessment. Overall, these results support the  
17 hypothesis that the amplitude of the MMN is a potential marker of accelerated ageing in DS.

18 The cohort of DS participants included three individuals with AD. The decision to keep those  
19 participants in our sample was driven by the strong evidence that DS will invariably develop AD  
20 during their lifespan (Näätänen et al., 2011). The presence of AD is typically considered a  
21 dichotomous variable used as inclusion or exclusion criterium. Instead, we made the theoretical  
22 decision of treating it as a continuous variable that simply expresses a degree of progression of  
23 inevitable pathological ageing in individuals with DS.

24 Cross-sectional data suggest that the MMN manifested in both GFP and ERP measures is a measure  
25 sensitive to DS accelerated ageing. However, its relationship with cognitive decline over time is less  
26 clear. First, there was no correlation between dCAMCOG and age. Second, there only seem to be

1 moderate evidence for a nonlinear relationship between dGFP latency and dCAMCOG scores, with  
2 increasing latency predicting stronger cognitive decline (lower dCAMCOG scores) at shorter and  
3 longer latencies but weaker decline at intermediated latencies. Subsequently, no relationship was  
4 found between dGFP latency and CAMCOG subscales difference scores. Given the results, there is  
5 little evidence for any relationship between MMN measures and cognitive decline as measured  
6 through the CAMCOG. The contrast between scores at T1 and T2 showed that the CAMCOG was able  
7 to detect a significant cognitive decline after 12 months, although with a small effect size. Hence,  
8 one explanation of a lack of relationship between MMN and dCAMCOG may be that the extent of  
9 cognitive decline was not big enough to be reflected in MMN variations. One reason for this may be  
10 that the time gap between T1 and T2 might not have been long enough to see a statistically  
11 significant effect. Alternatively, the study might be underpowered to detect potentially small effects.  
12 It is also important to keep in mind that the CAMCOG assesses a variety of complex cognitive  
13 functions. On the other hand, smaller amplitudes of the pre-attentive MMN reflect decline in  
14 sensory memory (Horst et al., 1993; Huppert et al., 1996) which is a lower level function. Hence, the  
15 complexity of the CAMCOG scores may overshadow any decline on sensory memory. Finally, one  
16 may argue that if sensory memory declines then we could have expected the MMN to predict scores  
17 on the Perception subscale. However, perception is measured through recognition of famous people  
18 and objects from different angles (Horst et al., 1993; Huppert et al., 1996) and thus sensory memory  
19 is not directly assessed.

20 A limitation of the present research is that there was no MMN measurement at T2. Future research  
21 should aim at filling this gap. First, it should assess the degree of MMN variation over time in DS  
22 within individual participants. If the MMN is a potential tool to measure accelerated ageing in the DS  
23 population, it is clinically important to establish its temporal sensitivity. Furthermore, the MMN at  
24 T1 may not be predictive of cognitive decline after 12 months but a change in MMN amplitude over  
25 time may be predictive of future cognitive decline at a larger timescale. Finally, the possibility of  
26 MMN latency variations as a measure of accelerated ageing should be further investigated.

## 1 **5. Conclusions**

2 The present study investigated the MMN as a means to study accelerated ageing in DS. We showed  
3 that age predicted the amplitude of the MMN both expressed in GFP and traditional ERP. The  
4 amplitude decreased with increasing age. On the other hand, in the age-matched typically  
5 developing group, age did not predict MMN amplitude. This suggests that people with DS  
6 electrophysiologically show accelerated ageing and that the MMN is a valid marker to assess the  
7 impairment of cortical processes of sensory memory and structures associated with the generation  
8 of MMN responses.

9 The study also investigated the MMN as predictor of cognitive decline at about 12 month time.

10 Overall the data did not provide strong evidence in support of a significant relationship between  
11 MMN and cognitive decline in DS as measured by the CAMCOG-DS - neither for the total score, or  
12 for its subscales. Future research should look at the MMN longitudinally and should investigate  
13 whether rates of MMN change over time predict cognitive decline.

14

## 15 **Disclosure statement**

16 The authors have no conflicts of interest to declare.

17

## 18 **Acknowledgements**

19 We are very grateful to the adults who participated in the study, and their families and carers who  
20 supported them to do so. The Medical Research Council, The Health Foundation, Addenbrooke's  
21 Charitable Trust, Alzheimer's Research UK Pump Priming Grant – Cambridge Network, Fearnside's  
22 Fund, and Marmaduke Sheild Fund funded this research. We thank them for their support. We  
23 appreciate the assistance from the DSA and JDR in identifying participants for the study. We also  
24 would like to thank Paula Castro for her contribution with data collection and Dr Peter Watson for  
25 valuable statistical advice.

26

## 1 Authors contribution

2 Conceptualization and design: SJ, TB, VN, SC, AH, SZ, HR. Data acquisition: SJ, MW, PC. Data  
3 analysis: CA, SJ. Drafting: CA, SJ. Figures: CA. Supervision: SC, VN, TB, HR. Review: CA, AL, VN, AH, IC.  
4 Funding: AH, SZ, HR, SJ. CA and SJ contributed equally to the paper.

5

6

## 7 References

- 8 Alain, C., Woods, D. L., & Knight, R. T. (1998). A distributed cortical network for auditory  
9 sensory memory in humans. *Brain Research*, *812*(1–2), 23–37.  
10 [https://doi.org/10.1016/S0006-8993\(98\)00851-8](https://doi.org/10.1016/S0006-8993(98)00851-8)
- 11 Alho, K., Woods, D. L., Algazi, A., Knight, R. T., & Näätänen, R. (1994). Lesions of frontal cortex  
12 diminish the auditory mismatch negativity. *Electroencephalography and Clinical  
13 Neurophysiology*, *91*(5), 353–362. [https://doi.org/10.1016/0013-4694\(94\)00173-1](https://doi.org/10.1016/0013-4694(94)00173-1)
- 14 Annus, T., Wilson, L. R., Hong, Y. T., Acosta-Cabronero, J., Fryer, T. D., Cardenas-Blanco, A.,  
15 Smith, R., Boros, I., Coles, J. P., Aigbirhio, F. I., Menon, D. K., Zaman, S. H., Nestor, P. J., &  
16 Holland, A. J. (2016). The pattern of amyloid accumulation in the brains of adults with  
17 Down syndrome. *Alzheimer's & Dementia*, *12*(5), 538–545.  
18 <https://doi.org/10.1016/j.jalz.2015.07.490>
- 19 Bekinschtein, T. A., Dehaene, S., Rohaut, B., Tadel, F., Cohen, L., & Naccache, L. (2009). Neural  
20 signature of the conscious processing of auditory regularities. *Proceedings of the  
21 National Academy of Sciences of the United States of America*, *106*(5), 1672–1677.  
22 <https://doi.org/10.1073/pnas.0809667106>
- 23 Bibina, V. C., Chakraborty, U., Lourde, M. R., & Kumar, A. (2017). Time-frequency methods for  
24 diagnosing Alzheimer's disease using EEG – A technical review. *ACM International  
25 Conference Proceeding Series, Part F1309*, 49–54.  
26 <https://doi.org/10.1145/3121138.3121183>
- 27 Cheng, C. H., Hsu, W. Y., & Lin, Y. Y. (2013). Effects of physiological aging on mismatch  
28 negativity: A meta-analysis. *International Journal of Psychophysiology*, *90*(2), 165–171.  
29 <https://doi.org/10.1016/j.ijpsycho.2013.06.026>
- 30 Chennu, S., Noreika, V., Gueorguiev, D., Blenkmann, A., Kochen, S., Ibáñez, A., Owen, A. M., &  
31 Bekinschtein, T. A. (2013). Expectation and attention in hierarchical auditory prediction.  
32 *Journal of Neuroscience*, *33*(27), 11194–11205.  
33 <https://doi.org/10.1523/JNEUROSCI.0114-13.2013>
- 34 Counts, S. E., Ikonomic, M. D., Mercado, N., Vega, I. E., & Mufson, E. J. (2017). Biomarkers  
35 for the Early Detection and Progression of Alzheimer's Disease. *Neurotherapeutics*,  
36 *14*(1), 35–53. <https://doi.org/10.1007/s13311-016-0481-z>
- 37 de Roeck, E. E., de Deyn, P. P., Dierckx, E., & Engelborghs, S. (2019). Brief cognitive screening  
38 instruments for early detection of Alzheimer's disease: A systematic review. *Alzheimer's  
39 Research and Therapy*, *11*(1), 21. <https://doi.org/10.1186/s13195-019-0474-3>
- 40 Delorme, A., & Makeig, S. (2004). EEGLAB: An open source toolbox for analysis of single-trial  
41 EEG dynamics including independent component analysis. *Journal of Neuroscience  
42 Methods*, *134*(1), 9–21. <https://doi.org/10.1016/j.jneumeth.2003.10.009>
- 43 Eggermont, J. J. (1988). On the rate of maturation of sensory evoked potentials.  
44 *Electroencephalography and Clinical Neurophysiology*, *70*(4), 293–305.  
45 [https://doi.org/10.1016/0013-4694\(88\)90048-X](https://doi.org/10.1016/0013-4694(88)90048-X)

- 1 Fellizar-Lopez, Kathleen R Abes, G. T., Reyes-Quintos, M., Rina, T., Tantoco, M., & Leah, S.  
2 (2011). Accuracy of Siemens HearCheck™ navigator as a screening tool for hearing loss.  
3 *Philippine Journal of Otolaryngology Head and Neck Surgery*, 26(1), 10--15.
- 4 Fonseca, L. M., Ball, S. L., & Holland, A. J. (2018). The Cambridge Examination for Mental  
5 Disorders of Older People with Down's Syndrome and Others with Intellectual  
6 Disabilities (CAMDEX-DS). In *Neuropsychological Assessments of Dementia in Down  
7 Syndrome and Intellectual Disabilities* (pp. 123–144). Springer International Publishing.  
8 [https://doi.org/10.1007/978-3-319-61720-6\\_7](https://doi.org/10.1007/978-3-319-61720-6_7)
- 9 Friston, K. (2003). Learning and inference in the brain. *Neural Networks*, 16(9), 1325–1352.  
10 <https://doi.org/10.1016/j.neunet.2003.06.005>
- 11 Friston, K. (2005). A theory of cortical responses. *Philosophical Transactions of the Royal  
12 Society B: Biological Sciences*, 360(1456), 815–836.  
13 <https://doi.org/10.1098/rstb.2005.1622>
- 14 Garrido, M. I., Friston, K. J., Kiebel, S. J., Stephan, K. E., Baldeweg, T., & Kilner, J. M. (2008).  
15 The functional anatomy of the MMN: A DCM study of the roving paradigm. *NeuroImage*,  
16 42(2), 936–944. <https://doi.org/10.1016/j.neuroimage.2008.05.018>
- 17 Garrido, M. I., Kilner, J. M., Kiebel, S. J., & Friston, K. J. (2009a). Dynamic causal modeling of  
18 the response to frequency deviants. *Journal of Neurophysiology*, 101(5), 2620–2631.  
19 <https://doi.org/10.1152/jn.90291.2008>
- 20 Garrido, M. I., Kilner, J. M., Stephan, K. E., & Friston, K. J. (2009b). The mismatch negativity: A  
21 review of underlying mechanisms. *Clinical Neurophysiology*, 120(3), 453–463.  
22 <https://doi.org/10.1016/j.clinph.2008.11.029>
- 23 Grothe, M. J., Barthel, H., Sepulcre, J., Dyrba, M., Sabri, O., & Teipel, S. J. (2017). In vivo  
24 staging of regional amyloid deposition. *Neurology*, 89(20), 2031–2038.  
25 <https://doi.org/10.1212/WNL.0000000000004643>
- 26 Handen, B. L., Cohen, A. D., Channamalappa, U., Bulova, P., Cannon, S. A., Cohen, W. I.,  
27 Mathis, C. A., Price, J. C., & Klunk, W. E. (2012). Imaging brain amyloid in nondemented  
28 young adults with Down syndrome using Pittsburgh compound B. *Alzheimer's and  
29 Dementia*, 8(6), 496–501. <https://doi.org/10.1016/j.jalz.2011.09.229>
- 30 Holland, A. J., Hon, J., Huppert, F. A., Stevens, F., & Watson, P. (1998). Population-based study  
31 of the prevalence and presentation of dementia in adults with Down's syndrome. *British  
32 Journal of Psychiatry*, 172(JUNE), 493–498. <https://doi.org/10.1192/bjpp.172.6.493>
- 33 Holland, Anthony J., & Ball, S. L. (2009). The Cambridge examination for mental disorders of  
34 older people with down's syndrome and others with intellectual disabilities (CAMDEX-  
35 DS). In *Neuropsychological Assessments of Dementia in Down Syndrome and Intellectual  
36 Disabilities* (pp. 107–127). Springer. [https://doi.org/10.1007/978-1-84800-249-4\\_7](https://doi.org/10.1007/978-1-84800-249-4_7)
- 37 Horst, R. ter, Hooyer, C., Dinkgreve, M., & Jonker, C. (1993). Some psychometric properties of  
38 the CAMCOG. *Psychological Medicine*, 23(1), 213–219.  
39 <https://doi.org/10.1017/S0033291700039003>
- 40 Horváth, J., Czizler, I., Winkler, I., & Teder-Sälejärvi, W. A. (2007). The temporal window of  
41 integration in elderly and young adults. *Neurobiology of Aging*, 28(6), 964–975.  
42 <https://doi.org/10.1016/j.neurobiolaging.2006.05.002>
- 43 Huang, Y., & Rao, R. P. N. (2011). Predictive coding. *Wiley Interdisciplinary Reviews: Cognitive  
44 Science*, 2(5), 580–593. <https://doi.org/10.1002/wcs.142>
- 45 Hughes, L. E., & Rowe, J. B. (2013). The impact of neurodegeneration on network  
46 connectivity: A study of change detection in frontotemporal dementia. *Journal of  
47 Cognitive Neuroscience*, 25(5), 802–813. [https://doi.org/10.1162/jocn\\_a\\_00356](https://doi.org/10.1162/jocn_a_00356)
- 48 Huppert, F. A., Jorm, A. F., Brayne, C., Girling, D. M., Barkley, C., Beardsall, L., & Paykel, E. S.  
49 (1996). Psychometric properties of the CAMCOG and its efficacy in the diagnosis of  
50 dementia. *Aging, Neuropsychology, and Cognition*, 3(3), 201–214.  
51 <https://doi.org/10.1080/13825589608256624>

- 1 Jacobsen, T., & Na, R. (2005). *Memory-based or afferent processes in mismatch negativity (*  
2 *MMN): A review of the evidence*. 42, 25–32. [https://doi.org/10.1111/j.1469-](https://doi.org/10.1111/j.1469-8986.2005.00256.x)  
3 8986.2005.00256.x
- 4 Kaufman, A. S., & Kaufman, N. L. (2014). Kaufman Brief Intelligence Test, Second Edition. In  
5 C. R. Reynolds, K. J. Vannest, & E. Fletcher-Janzen (Eds.), *Encyclopedia of Special*  
6 *Education*. John Wiley & Sons, Inc. <https://doi.org/10.1002/9781118660584.ese1325>
- 7 Kiang, M., Braff, D. L., Sprock, J., & Light, G. A. (2009). The relationship between preattentive  
8 sensory processing deficits and age in schizophrenia patients. *Clinical Neurophysiology*,  
9 120(11), 1949–1957. <https://doi.org/10.1016/j.clinph.2009.08.019>
- 10 Lalo, E., Vercueil, L., Bougerol, T., Jouk, P. S., & Debû, B. (2005). Late event-related potentials  
11 and movement complexity in young adults with Down syndrome. *Neurophysiologie*  
12 *Clinique*, 35(2–3), 81–91. <https://doi.org/10.1016/j.neucli.2005.03.002>
- 13 Lautarescu, B. A., Holland, A. J., & Zaman, S. H. (2017). The Early Presentation of Dementia in  
14 People with Down Syndrome: a Systematic Review of Longitudinal Studies. In  
15 *Neuropsychology Review* (Vol. 27, Issue 1, pp. 31–45). Springer New York LLC.  
16 <https://doi.org/10.1007/s11065-017-9341-9>
- 17 Lott, I. T., & Dierssen, M. (2010). Cognitive deficits and associated neurological complications  
18 in individuals with Down’s syndrome. *The Lancet Neurology*, 9, 623–633.  
19 [https://doi.org/10.1016/S1474-4422\(10\)70112-5](https://doi.org/10.1016/S1474-4422(10)70112-5)
- 20 Maris, E., & Oostenveld, R. (2007). Nonparametric statistical testing of EEG- and MEG-data.  
21 *Journal of Neuroscience Methods*, 164(1), 177–190.  
22 <https://doi.org/10.1016/j.jneumeth.2007.03.024>
- 23 Mioshi, E., Dawson, K., Mitchell, J., Arnold, R., & Hodges, J. R. (2006). The Addenbrooke’s  
24 Cognitive Examination revised (ACE-R): A brief cognitive test battery for dementia  
25 screening. *International Journal of Geriatric Psychiatry*, 21(11), 1078–1085.  
26 <https://doi.org/10.1002/gps.1610>
- 27 Näätänen, R., Paavilainen, P., Rinne, T., & Alho, K. (2007). The mismatch negativity (MMN) in  
28 basic research of central auditory processing: A review. *Clinical Neurophysiology*,  
29 118(12), 2544–2590. <https://doi.org/10.1016/j.clinph.2007.04.026>
- 30 Näätänen, Risto, Kujala, T., Kreegipuu, K., Carlson, S., Escera, C., Baldeweg, T., & Ponton, C.  
31 (2011). The mismatch negativity: An index of cognitive decline in neuropsychiatric and  
32 neurological diseases and in ageing. *Brain*, 134(12), 3432–3450.  
33 <https://doi.org/10.1093/brain/awr064>
- 34 Näätänen, Risto, Pakarinen, S., Rinne, T., & Takegata, R. (2004). The mismatch negativity  
35 (MMN): Towards the optimal paradigm. *Clinical Neurophysiology*, 115(1), 140–144.  
36 <https://doi.org/10.1016/j.clinph.2003.04.001>
- 37 Näätänen, Risto, & Picton, T. (1987). The N1 Wave of the Human Electric and Magnetic  
38 Response to Sound: A Review and an Analysis of the Component Structure.  
39 *Psychophysiology*, 24(4), 375–425. <https://doi.org/10.1111/j.1469-8986.1987.tb00311.x>
- 40 Näätänen, Risto, Sussman, E. S., Salisbury, D., & Shafer, V. L. (2014). Mismatch negativity  
41 (MMN) as an index of cognitive dysfunction. *Brain Topography*, 27(4), 451–466.  
42 <https://doi.org/10.1007/s10548-014-0374-6>
- 43 Neale, N., Padilla, C., Fonseca, L. M., Holland, T., & Zaman, S. (2018). Neuroimaging and other  
44 modalities to assess Alzheimer’s disease in Down syndrome. *NeuroImage: Clinical*, 17,  
45 263–271. <https://doi.org/10.1016/j.nicl.2017.10.022>
- 46 Paavilainen, P. (2013). The mismatch-negativity (MMN) component of the auditory event-  
47 related potential to violations of abstract regularities: A review. *International Journal of*  
48 *Psychophysiology*, 88(2), 109–123. <https://doi.org/10.1016/j.ijpsycho.2013.03.015>
- 49 Ponton, C. W., Eggermont, J. J., Kwong, B., & Don, M. (2000). Maturation of human central  
50 auditory system activity: Evidence from multi-channel evoked potentials. *Clinical*  
51 *Neurophysiology*, 111(2), 220–236. [https://doi.org/10.1016/S1388-2457\(99\)00236-9](https://doi.org/10.1016/S1388-2457(99)00236-9)

- 1 Romano, A., Cornia, R., Moraschi, M., Bozzao, A., Chiacchiararelli, L., Coppola, V., Iani, C.,  
2 Stella, G., Albertini, G., & Pierallini, A. (2016). Age-Related Cortical Thickness Reduction  
3 in Non-Demented Down's Syndrome Subjects. *Journal of Neuroimaging*, 26(1), 95–102.  
4 <https://doi.org/10.1111/jon.12259>
- 5 Roth, M., Tym, E., & Mountjoy, C. Q. (1986). CAMDEX. A standardised instrument for the  
6 diagnosis of mental disorder in the elderly with special reference to the early detection  
7 of dementia. *British Journal of Psychiatry*, 149(DEC.), 698–709.  
8 <https://doi.org/10.1192/bjp.149.6.698>
- 9 Schiff, S., Valenti, P., Andrea, P., Lot, M., Bisiacchi, P., Gatta, A., & Amodio, P. (2008). The  
10 effect of aging on auditory components of event-related brain potentials. *Clinical*  
11 *Neurophysiology*, 119(8), 1795–1802. <https://doi.org/10.1016/j.clinph.2008.04.007>
- 12 Sperling, R. A., Karlawish, J., & Johnson, K. A. (2013). Preclinical Alzheimer disease - The  
13 challenges ahead. *Nature Reviews Neurology*, 9(1), 54–58.  
14 <https://doi.org/10.1038/nrneurol.2012.241>
- 15 Teipel, S. J., Dyrba, M., Chiesa, P. A., Sakr, F., Jelistratova, I., Lista, S., Vergallo, A., Lemercier,  
16 P., Cavedo, E., Habert, M. O., Dubois, B., Hampel, H., & Grothe, M. J. (2020). In vivo  
17 staging of regional amyloid deposition predicts functional conversion in the preclinical  
18 and prodromal phases of Alzheimer's disease. *Neurobiology of Aging*, 93, 98–108.  
19 <https://doi.org/10.1016/j.neurobiolaging.2020.03.011>
- 20 Tomé, D., Barbosa, F., Nowak, K., & Marques-Teixeira, J. (2015). The development of the N1  
21 and N2 components in auditory oddball paradigms: a systematic review with narrative  
22 analysis and suggested normative values. *Journal of Neural Transmission*, 122(3), 375–  
23 391. <https://doi.org/10.1007/s00702-014-1258-3>
- 24 Zigman, W. B. (2013). Atypical aging in down syndrome. *Developmental Disabilities Research*  
25 *Reviews*, 18(1), 51–67. <https://doi.org/10.1002/ddrr.1128>  
26