

Virtual care with digital technologies for rural and remote Canadians living with cardiovascular disease

Ryan Buyting MSc¹⁻⁶, Sarah Melville BSc (Hons.), CRA³⁻⁶, Hanif Chatur MD, CCFP(EM)^{5,6}, Christopher W. White, MD, PhD, FRCSC^{2,4,5}, Jean-François Légaré MD, FRCSC^{2,4-6}, Sohrab Lutchmedial MD, FRCPC^{3,4-6} & Keith R. Brunt, PhD^{1,5,6*}

1. Department of Pharmacology, Dalhousie Medicine New Brunswick, Saint John, New Brunswick, Canada
2. Division of Cardiac Surgery, Saint John Regional Hospital, Saint John, New Brunswick, Canada
3. Division of Cardiology, Saint John Regional Hospital, Saint John, New Brunswick, Canada
4. Horizon Health Network, New Brunswick Canada
5. Faculty of Medicine, Dalhousie University
6. IMPART Investigator Team Canada (<https://impart.team/>)

Short Title: Virtual care for rural Canadians with CVD

Address for Correspondence:

Keith R. Brunt, PhD
Dalhousie Medicine New Brunswick (DMNB)
PO Box 5050, 100 Tucker Park Road
Saint John, New Brunswick
Canada, E2L 4L5
Phone: (506) 636-6974
Email: keith.brunt@dal.ca
Twitter: @prof_brunt

Keywords: Telehealth, Telemedicine, Decision Support Systems, Remote Monitoring, Patient Self-Management

1 **Summary**

2 Patients living in rural and remote communities’ experience diverse challenges to receiving
3 equitable healthcare as is mandated by the Canada Health Act. Advances in virtual care
4 technology may provide practical, economical, and innovative solutions to ensure this for
5 patients in remote and rural living situations. Here we provide a state-of-the-art review of virtual
6 care technologies available to patients with cardiovascular disease living in rural areas of
7 Canada.

8
9 **Abstract**

10 Canada is a wealthy nation with a geographically diverse population, seeking health innovations
11 to better serve patients in accordance with the Canada Health Act. In this country, population and
12 geography converge with social determinants, policy, procurement regulations, and technological
13 advances, in order to achieve equity in the management and distribution of healthcare. Rural and
14 remote patients are a vulnerable population; when managing chronic conditions such as
15 cardiovascular disease, there is inequity when it comes to accessing specialist physicians at the
16 recommended frequency—increasing the likelihood of poor health outcomes. Ensuring equitable
17 care for this population is an unrealized priority of several provincial and federal government
18 mandates. Virtual care technology may provide practical, economical, and innovative solutions
19 to remedy this discrepancy. Here we review the literature pertaining to the use of virtual care
20 technologies to monitor patients with cardiovascular disease living in rural areas of Canada. A
21 search strategy was developed to identify the literature specific to this context across three
22 bibliographic databases. 166 unique citations were ultimately assessed for eligibility, of which 36
23 met the inclusion criteria. In our assessment of these articles, we provide a summary of the
24 interventions studied, their reported effectiveness in reducing adverse events and mortality, the
25 challenges to implementation, and the receptivity of these technologies amongst patients,
26 providers and policy makers. Further, we glean insight into the barriers and opportunities to
27 ensure equitable care for rural patients and conclude that there is an ongoing need for clinical
28 trials assessing virtual care technologies in this context.

29 **Introduction**

30 Based on its geographic size and distributed population density, Canada is justified to become a
31 leader of innovation for remote medical care—whether the nation is optimally capitalizing on
32 this is unclear. Rural populations are essential to the well-being of a nation, as they are
33 naturalized environmental stewards; farmers and harvesters providing the majority of food, and
34 other natural resources that enable urban living and a trade economy. In contrast to urban
35 populations, rural patients are a vulnerable group in need of special attention to ensure equitable
36 healthcare delivery. ¹⁻³ The inequities impacting rural populations are complex, but a major
37 concern is timely access to specialist physicians in accordance with clinical guideline
38 recommendations. ⁴⁻⁶ Disparities in healthcare negatively impact all clinical outcomes, and thus
39 provisions to secure equitable healthcare and comparable health outcomes for vulnerable groups
40 are necessary. The scientific and clinical efforts toward addressing this are increasing and
41 multiple approaches to democratize care are being studied. ⁷ One approach is the opportunity for
42 healthcare workers, researchers, and policymakers to adopt innovative virtual care and remote-
43 monitoring platforms to improve clinical outcomes, reduce hospital wait times, or increase the
44 quality of life for patients and their families. ^{8,9} An example of how such a system could work is
45 depicted in Figure 1, which has been adapted from Prescher *et al.* ¹⁰ In the 1970s, Canada was a
46 leader in virtual care, yet now lags behind other countries. There is increasing demand by
47 Canadian physicians for more virtual care technology, training, and payment models to support
48 and integrate with standard clinical practice. In an organized initiative, the Canadian Medical
49 Association (CMA) Virtual Care Task Force recently created a national strategy of practice
50 recommendations. ¹¹

51
52 There is no widely accepted definition of virtual care, telehealth, telemedicine, or e-medicine,
53 and these terms are often used interchangeably, along with many others. The World Health
54 Organization defines e-health as “the cost-effective and secure use of information and
55 communication technologies in support of health and health-related fields, including healthcare
56 services, health surveillance, health literature, and health education, knowledge and research.” ¹²
57 The use of virtual care technologies continues to grow and includes electronic virtual visits,
58 referrals, consults, prescriptions, medical-records, vital sign monitoring, digital therapeutics,
59 care-flow ordered checklists, telepresence and robotic surgery. For the purpose of this review,
60 virtual care is defined as healthcare services provided directly to patients using information
61 telecommunications technology (that is, medical care provided without traditional dependence
62 on physical contact, paper, or archaic technologies such as fax machines). We will refer to all
63 further instances of these terms simply as virtual care. Healthcare providers can use virtual care

64 to remotely diagnose, treat, and manage patients, in many but not all instances. Thus, virtual care
65 ensures continuity and integration with practice level operations, not displacement or
66 replacement. Patients can be seen virtually by primary care providers in their homes, places of
67 work, or anywhere else they have access to the internet. The ability to connect providers and
68 patients without regard to their respective locations is a compelling benefit of virtual care
69 services for both patients and providers.¹³ It is also considered to be essential infrastructure to
70 occupational health, safety and productivity by employers by reducing down-time, sick-days and
71 an optimized work culture. Virtual care simply provided by video and audio alone has diverse
72 applications, but numerous disease-specific platforms and devices have also been developed to
73 remotely provide the consulting physician with evermore information to improve decision
74 making. These devices include stethoscopes, glucometers, oxygen saturation monitors, weigh
75 scales, temperature, and blood pressure devices, along with more invasive technologies such as
76 otoscopes, continuous positive airway pressure (CPAP) sleep devices, or even implantable
77 cardiac-defibrillators.^{14, 15}

78
79 As was alluded to above, virtual care technologies are not intended to replace traditional
80 healthcare delivery methods, but rather to augment and integrate with services to ensure more
81 productive, efficient, and equitable healthcare for all citizens. Regular health monitoring of
82 patients at-risk of- or diagnosed with- cardiovascular disease (CVD), has the potential to reduce
83 the need for significant treatment interventions, including invasive cardiac surgery or
84 readmissions for past interventions.¹⁶⁻¹⁸ Virtual care mitigates the need for rurally located
85 patients to defer care or make burdensome commutes to visit with specialist clinicians for
86 follow-up appointments. This can improve post-operative health outcomes. Owing to the fact
87 that these technologies enable more productive, efficient, sustainable, supported, and convenient
88 care management, they have important economic implications to healthcare payers, whether they
89 are government or private allied insurers. CVD ranks among the largest chronic comorbidity and
90 cause of morbidity and mortality in Canada.¹⁹ Therefore, our research question was directed at
91 understanding: what efforts in the realm of rural CVD management using virtual care
92 technologies have recently been conducted in Canada? The purpose of this review is to
93 summarize the relevant studies, the effectiveness of virtual care systems to reduce adverse
94 events, improve adherence to medication and lifestyle modifications to effect all-cause
95 mortality—recognizing barriers to implementation or acceptance of these technologies among
96 payers, patients, and providers.

97
98

99 **Methods**

100 *Eligibility Criteria*

101 Using *a priori* developed selection criteria, we included studies reporting on the use of virtual
102 care technologies in the context of patients in rural areas of Canada living with CVD. We used
103 the definition of CVD outlined by the World Health Organization’s International Classification
104 of Diseases Tenth Edition (ICD-10), which encompasses all diseases of the circulatory system,
105 primarily: 1) coronary artery disease, or ischemic heart disease, caused by low myocardial
106 perfusion, and thus precipitating angina, myocardial infarction, and/or heart failure. 2)
107 cerebrovascular disease, including disorders that affect the blood supply to the brain, including
108 stroke and transient ischemic attack, and 3) peripheral artery disease, involving the limbs or
109 claudication in peripheral vasculature. Additionally, hypertension, valvular pathologies, aortic
110 aneurysms, and cardiac arrhythmias were all considered to be cardiovascular pathologies that fit
111 this definition.²⁰

112
113 This review includes all study designs, including quantitative pilot and retrospective comparison
114 studies, and qualitative analyses of the various aspects involved with the adoption of virtual care
115 technologies by healthcare providers, patients, and their families. Therefore, the population of
116 interest included patients diagnosed with CVD or individuals caring for patients diagnosed with
117 CVD at the time of study. We only included studies that explicitly mentioned rurally located
118 patients living in Canada, as the economic and political climate of a particular healthcare
119 network has proven to be a critical factor regulating how these virtual care technologies are
120 being disseminated and studied. Despite this, in some subsections, we reflect on Canadian
121 studies that do not explicitly focus on rural patients in order to contextualize the state of the
122 technology for a given disease. The articles also had to have been published in English within the
123 last 10 years, due to the fact that the technology is rapidly evolving, and older technologies are
124 becoming irrelevant.

125 126 *Literature Search Strategy*

127 Literature search strategies were developed with the assistance of an experienced information
128 services librarian (JP) who reviewed and refined the search criteria through iterative discussion.
129 We adopted relevant elements of the Preferred Reporting Items for Systematic Reviews and
130 Meta-Analyses (PRISMA).²¹ A search of the literature was performed by the primary author
131 (RB) in May of 2020 using PubMed ©, Embase ®, and the Cochrane Central Register of
132 Controlled Trials (CENTRAL) ©. All articles that listed in the title or abstract the terms
133 “telehealth,” “omnicare,” “e-medicine,” “electronic medicine,” “remote consultation,” or
134 “telemedicine” were linked through the Boolean operator “and” to rural-patient-identifying terms

135 (“rural,” “remote,” “distance,” “rural population,” and “rural health services”), as well as the
136 terms “Canada,” and terms relating to the diseases of interest (“hypertension” or “cardiovascular
137 disease”). MeSH terms were used where appropriate and when possible. Using the features built
138 into each of these respective databases, the results were limited to studies published in English
139 within the last 10 years before being imported into Covidence ©.

140

141 *Study Selection*

142 Upon being imported into the review software, any duplicate articles were automatically
143 removed. The remaining titles and abstracts were screened for relevance to the research question
144 by the primary author (RB). Articles were removed if they did not meet the *a priori* defined
145 criteria. The full texts of each of the remaining articles were then individually obtained and
146 reviewed in-depth to determine their applicability. At this stage, each article was either removed,
147 or included and subsequently categorized based on the subtype of CVD in the study. A
148 miscellaneous category was created for studies that included multiple CVD subtypes. A total of
149 166 citations were identified and assessed for eligibility, yet only 36 studies met the inclusion
150 criteria and are discussed in this review. (Figure 2)

151 **Results**

152 *Study Characteristics*

153 The studies that met the inclusion criteria of this review discussed virtual care programs from
154 five provinces: Ontario (15), British Columbia (10), Alberta (8), Quebec (2), and Saskatchewan
155 (1). One study specifically included Indigenous Nations in three provinces (ON, QC, & NB),
156 which strengthens the validity of inclusiveness in a rural Canadian context for that study. The
157 Western Prairies (AB, SK, MB), Atlantic Canada (NB, NS, PE, NL), and Territories (YT, NT,
158 NU) are discussed collectively due in part to collective geographic rural regionality. The article
159 types include: 2 review articles, 1 commentary article, 1 protocol paper, and 32 original research
160 articles (15 abstracts and 17 full-length manuscripts). The articles were published from 2010 to
161 2019, with more than a third (n=13) published in 2018 (n=6) and 2019 (n=7). The total number
162 of participants in all of the studies combined was 4,014.

163

164 *General Cardiovascular Disease Interventions*

165 Jarvis-Selinger *et al.* interviewed 48 stakeholders who were either patients diagnosed with CVD
166 or involved in the care of patients diagnosed with CVD from rural and urban areas of British
167 Columbia. Their goal was to better understand the role of virtual care in CVD management, the
168 challenges to its adoption, and incentives that may increase its use among this population. The
169 findings suggest that both healthcare providers and patients supported the use of virtual care,
170 with the greatest benefits derived from the ability to share patient data and support patient self-
171 management. Two concerns commonly expressed were the accuracy of patient self-reported data
172 and security, therefore the authors state that support for implementing such systems needs to be
173 tempered by a clear understanding of how these concerns will be mitigated.²² Some reassurance
174 may be derived from the fact that many of these systems include automatic vital sign reporting to
175 the provider (as well as an option for manual input by the patient), and most devices adhere to
176 federal regulatory standards with respect to privacy and security. Further support for the role of
177 virtual care among rural patients comes from Cameron *et al.*, who trialed a chronic disease self-
178 management program in 13 rural and remote communities in Northern Ontario over a 9-month
179 period. A total of 213 individuals with diagnoses of chronic lung disease, CVD, stroke, or
180 arthritis were included in the study. While their goal was to better understand the psychological
181 mechanisms underlying the effectiveness of the program itself (rather than its delivery), the fact
182 that it was successfully conducted in this manner alone is encouraging. Specifically, the results
183 of this study show that virtual care initiatives can be a viable means of overcoming geographic
184 barriers for rural patients, and that patients and providers in rural areas may be uniquely
185 receptive to these innovations. Outcomes produced from these programs, including those related
186 to self-efficacy, mental- and physical-health status, can be comparable to in-person programs,

187 thereby enhancing the overall reach and equity of healthcare services.²³ Other evidence shows
188 that virtual care technologies used with regular exercise can improve patient cardiometabolic risk
189 profiles; Stuckey and colleagues investigated the effects of an exercise prescription alone
190 compared with a program supported by virtual care technology to improve cardiometabolic risk
191 factors in rural community-dwelling adults. This work, however, seems to be ongoing, as only
192 the rationale for this project could be sourced.²⁴ It is generally considered to be more effective to
193 actively engage and support the person or population in establishing lifestyle changes, and with
194 the aid of virtual care, this coaching could be delivered faster and at scale. However, more robust
195 evidence from such programs (be it public or private) are needed to drive policy or practice
196 changes.

197

198 *Heart Failure Interventions*

199 Andrikopoulou and colleagues described a conceptual model of heart failure (HF) disease
200 management, in which they state that virtual care is effective because it allows for early detection
201 of worsening HF symptoms. Further, device data may prompt providers to optimize medication
202 regimens and may allow patients to better understand their unique causes of decompensation.²⁵
203 In their 2012 article, Grant *et al.* describe the first Canadian experience using virtual care for a
204 small sample of 25 HF patients, in which they found similar benefits, resulting in a reduced rate
205 of all-cause patient admissions and no admissions for HF decompensation. They stressed that the
206 success of this program was attributable to the cardiovascular nurses' ability to assess and
207 manage these complex patients and are therefore a key factor in the effectiveness of this model
208 of care.^{26, 27} Toback *et al.* later agreed with this sentiment, stating that effective virtual nursing
209 can improve patient education and self-management, including management of worsening
210 symptoms, daily weight measurements, medications and adjustments, appointment attendance,
211 diet restrictions, and appropriate behaviours based on symptoms and weight changes.²⁸

212

213 Telehealth for Emergency-Community Continuity of Care Connectivity via Home
214 Telemonitoring (TEC4Home) is a 4-year long initiative throughout many urban and rural centres
215 in British Columbia that aims to determine how virtual care may improve care, increase patient
216 safety during the transition of care, and determine how it is best implemented to support patients
217 with HF.²⁹ Though still ongoing, results from their intermediary pilot study indicate that home
218 monitoring of HF patients decreased emergency department visits and improved the overall
219 patient experience. The length of stay data presented in the abstract suggests that patients could
220 be discharged from the emergency department with home monitoring in order to reduce
221 hospitalization.³⁰ Given these preliminary results, we look forward to the pending release of a
222 peer-reviewed publication containing the results of this study.

223 Jaana and Sherrand assessed the comparative utilization of virtual care among patients with HF
224 in rural versus urban environments. They describe the necessity of considering the context in
225 which these interventions take place, which varies based on the geographic location of the
226 patients, as manifested by a variation in the social environment, individual resources and
227 capabilities, and the need for technology; this last point was specifically defined as a situation
228 where virtual care can substitute for services that have disappeared or supplement existing
229 services in a way that rural residents perceive as useful.^{31, 32} This group conducted a cross-
230 sectional study of all patients enrolled in the virtual care program at the University of Ottawa
231 Heart Institute. They assessed variables associated with both the processes and outcomes of care,
232 including the frequency in which: a patient's vital signs were out of normal range, calls were
233 made to a patient by the nurse, emergency department visits, hospital admissions, etc.
234 Interestingly, there was no variation in the process or outcome measures, thus concluding that
235 rural patients may not be perceived as extensive users of resources, nor patients who represent
236 challenges in terms of feasibility of virtual care use.³¹ This is encouraging, as it suggests that
237 rural patients, who have the potential to benefit more from virtual care services than their urban
238 counterparts, should not feel that they are being perceived as 'stealing healthcare dollars' from
239 urban taxpayers when advocating for its increased promotion and use within rural communities.

240

241 *Cardiac Arrhythmia Interventions*

242 Current practice guidelines for the treatment of cardiac arrhythmias in Canada recommend that
243 patients with cardiovascular implantable electronic devices (CIED), undergo follow-up
244 assessments at regular intervals.³³⁻³⁵ Herein lies an opportunity for innovation and optimization
245 through the implementation of virtual care technology. Amelio and colleagues describe one of
246 the initial Canadian virtual care arrhythmia clinic experiences, which aims to improve access to
247 electrophysiologists in Alberta. Patients are seen through a half-day clinic, scheduled on a
248 monthly basis, by both a registered nurse and an electrophysiologist. Through a video-conference
249 interview combined with diagnostic data supplied from the distant site, they develop a diagnosis
250 and provide treatment options, with on-going follow-up by a nurse to ensure patients are
251 properly managed. Patients reported satisfaction with this system and indicated saving up to
252 \$500 CAD in expenses and over 500 kilometres in travel for each appointment.³⁶

253

254 In 2013, the Canadian Cardiovascular Society and Canadian Heart Rhythm Society released a
255 position statement regarding the use of virtual care technology for CIED follow-up. It reported
256 that integrating these technologies into clinical practice can accelerate the identification of
257 clinical events and device problems, therefore recommending that virtual care be available at all
258 CIED follow-up clinics as standard of care. The report also provides advice for the proper

259 design, implementation, and integration of a virtual care system, albeit not unique to rural
260 populations.³⁵

261
262 Saint Paul's Hospital in Vancouver reported that using virtual care in their CIED care processes
263 decreased patient anxiety levels, improved communication of device information, and allows
264 patients living in rural communities' access to specialized care. Furthermore, they state that this
265 integration has also presented challenges, such as changes to clinic workflow, compliance and
266 usability by patients, and the need to develop effective education strategies when initiating
267 monitoring with new patients.^{37, 38} Similarly, Sparkes *et al.* conducted a usability study of a
268 mailable, non-invasive cardiac testing kit to five participants, each with varying experience with
269 technology. This specific application required independent set-up by patients, who were recorded
270 doing so in a 'think aloud' manner, while completing 20 device set-up tasks, followed by an
271 interview to elucidate their feelings about the process. While gender, age, and familiarity with
272 technology seemed to influence the participants' abilities to successfully set up these devices,
273 they concluded that sending the kit by mail appeared to be an acceptable strategy.³⁹ However,
274 given the small sample size, larger studies that could help to confirm these results are warranted.
275 These could help to further elucidate the language that should be used in the instructions and the
276 obstacles that should be anticipated in future deployments. Taken together, these studies show
277 the importance of involving patients as stakeholders when designing virtual care technology and
278 dissemination strategies. Also, if designed correctly, patients may not need to attend a
279 preliminary face-to-face visit with their care providers before initiating a virtual care-based
280 healthcare relationship. Established self-learning and orientation by video or walk-through
281 modules is one way to empower patients in this regard.

282
283 Rush *et al.* from the University of British Columbia has done extensive research into the
284 perspectives of physicians and patients living in rural areas concerning the use of virtual care for
285 atrial fibrillation (AF), specifically. In a preliminary study, thematic analysis of semi-structured
286 interviews with 14 patient and physician stakeholders revealed a high degree of variability in
287 receptiveness to virtual care. This was reported to be a result of differences in past experiences
288 with virtual care, in perceived adequacy of rural health services, and in perceived gaps in AF
289 care.⁴⁰ In a follow-up study with over 10-fold more patients (n=116) from three rural
290 communities, there were similar problems in managing AF. As it relates to virtual care, these
291 researchers found that access to primary and cardiology care was a recurring challenge, and
292 emergency department use was highly contentious but often the only option for accessing care.
293 Primary care physicians were generally comfortable managing AF but varied in their reasoning
294 for making referrals to specialists, often reserving them for complex situations to avoid the need

295 for patient travel. The patients and providers supported a broad approach to virtual care of AF
296 that is tailored to be inclusive of patients living in a rural demographic and thereby preserve the
297 vital role of primary care physicians.⁴¹

298

299 *Ischemic Heart Disease Interventions*

300 Accurate and efficient interpretation of pre-hospital 12-lead electrocardiograms (ECGs) has
301 shown to produce favourable patient outcomes as it reduces the delay to reperfusion through
302 fibrinolysis or percutaneous coronary intervention (PCI) therapies.⁴² Tanguay and colleagues
303 reported on a virtual care-based STEMI detection program used throughout rural Quebec. This 7-
304 year retrospective study included 728 patients with suspected STEMI who were transported by
305 EMS. The transmission of an ECG every two minutes allowed for remote interpretation of
306 abnormalities by a physician to discern between patients with a STEMI and those with a non-
307 STEMI. The system enabled remote diagnosis of STEMI in 8.1% of patients during transport
308 following an initial non-STEMI diagnosis. Thus, serial monitoring of these dynamic changes can
309 allow for more rapid diversion to primary PCI facilities, potentially improving outcomes.⁴² Such
310 an approach could also lend itself well to machine learning decision support systems that
311 improve triage or follow-up.

312

313 The American Heart Association guidelines recommend that the time between first medical
314 contact and balloon inflation for STEMI patients should not exceed 90 minutes.⁴³ However, this
315 is not realistic for many rural health systems, leading to increased morbidity and mortality for
316 patients in these areas. The same group in Quebec also strove to address this issue by using
317 virtual care services to reduce pre-hospital delays and make timely STEMI diagnoses. Over a
318 similar 7-year time period, their retrospective data of 208 STEMI patients demonstrated that
319 14.9% were already on their way to a hospital with PCI capabilities, 75.0% were re-routed to a
320 PCI centre, and 10.1% were directed to the nearest hospital. All patients but one arrived at the
321 PCI centre within the guideline recommended 60-minute pre-hospital care interval. This study
322 further illustrates that virtual care can help give timely access to PCI for rural populations that
323 would not otherwise have access to this treatment.⁴⁴ Integrating virtual care with paramedic and
324 emergency departments can further augment this capacity to deliver on-time care to rural
325 patients. Despite this however, one could argue that truly remote patients will never be able to
326 reach a PCI centre within the recommended time window, and thus these results may not be
327 applicable.

328

329 Following an acute event of cardiac ischemia, cardiac rehabilitation programs, consisting of a
330 combination of lifestyle and risk-factor management, can improve psychosocial outcomes and

331 reduce both premature mortality and future cardiac events. Given that these programs are
332 traditionally offered in large urban centres, geography is a common reason for decreased
333 attendance and inaccessibility. The review by Lear summarizes key work done in Canada that
334 leverages virtual care technologies for use in remote cardiac rehabilitation programs.⁴⁵ Lear *et*
335 *al.* also conducted a pilot study followed by a scaled, randomized controlled trial; the trial was a
336 4-month virtual care-based program with a 1-year sustainability follow-up on exercise capacity
337 and risk factor reduction compared with usual care. Only patients living in rural areas of British
338 Columbia were enrolled, as this population was thought to benefit most from a virtual care
339 program. For the primary outcome, after adjustment for the maximal time on the treadmill at
340 baseline, age, sex, type 2 diabetes, and internet use for health information, participants in the
341 treatment group had a greater increase in maximal time on the treadmill by 45.7 (95% CI, 1.04–
342 90.48) seconds compared with the control group during the 16 months ($P=0.045$). In unadjusted
343 analyses, total cholesterol (-7.3% ; $P=0.026$), low-density lipoprotein cholesterol (-11.9% ;
344 $P=0.022$), and dietary saturated fat (-1.4% kcal/d; $P=0.018$) were lower for the treatment group
345 and required minimal resources with less than 8 hours of staff time per patient. Therefore, this
346 model of care is cost efficient and readily sustainable.⁴⁶ A qualitative analysis of patient-
347 physician discussions when using this virtual program has also been published, which suggests
348 that simple chat sessions can be an effective alternative to in-person consultations, when
349 necessary.⁴⁷

350
351 Pistawka *et al.* also conducted a virtual cardiac rehabilitation program in British Columbia that
352 delivered health education to seven rural communities with a high prevalence of ischemic heart
353 disease. The program was implemented over a 6-month period in partnership with local health
354 authorities to ensure optimal uptake, ease of accessibility, and a streamlined referral process.
355 This was followed by a six-week evaluation period, revealing robust patient interest, uptake,
356 personal satisfaction, and improved self-efficacy, with over 90% of the study participants feeling
357 more knowledgeable with better skills to manage their health.⁴⁸ This further emphasizes the
358 importance of working with policy experts and procedural gatekeepers in health authorities to
359 streamline innovation implementation and pilot processes.

360
361 *Hypertension Interventions*
362 The prevalence of hypertension in Canada continues to rise and coordinated efforts to improve
363 the treatment and control of hypertension are needed.⁴⁹ Despite the high prevalence, there is
364 currently only one primary research article that investigated the use of virtual care for patients
365 living in rural areas. Tobe *et al.* conducted the Diabetes Risk Evaluation and Management
366 (DREAM)-global study to improve hypertension awareness, treatment, and management in

367 Indigenous populations living in rural areas using virtual care.⁵⁰⁻⁵² They randomized 243
368 patients from six rural communities to receive text messages specific to hypertension
369 management (active group) or general good health behaviours (passive group) and assessed for
370 reductions in blood pressure over a one-year period. Despite an overall reduction in blood
371 pressure, there was no difference in the blood pressure change between groups from baseline
372 systolic 0.8 (95% CI -4.2 to 5.8 mm Hg) or diastolic -1.0 (95% CI -3.7 to 1.8 mm Hg, P = 0.5)
373 blood pressure. Control was achieved in 37.5% (25.6%-49.4%, 95% CI) of the active group and
374 32.8% (20.6%-44.8%, 95% CI) of the passive group (difference in proportions -4.74% (-21.7%
375 to 12.2%, 95% CI, P = 0.6). This suggests that virtual care can be effective for controlling blood
376 pressure for Indigenous community members under the direction of community leadership.⁵² In
377 an editorial commentary about this study, Padwal suggests that passive virtual care interventions
378 like text messages are unlikely to be effective and that more dynamic interventions such as tele-
379 transmitting blood pressure devices are a better strategy.⁵³ Further cultural engagement with
380 Indigenous communities is needed to have two-eyed seeing initiated with Indigenous ways of
381 knowing to approaches and goals for CVD management.⁵⁴

382

383 *Cerebrovascular Disease Interventions*

384 The phrase “time-is-tissue” is used by cardiologists and neurologists to emphasize that tissue is
385 lost quickly as an infarction progresses without reperfusion; so emergent evaluation and rapid
386 responsive therapy are required.⁵⁵ For this reason, virtual care is paramount to individuals
387 affected by- and involved in the care of- patients with these conditions when geographically
388 distant from healthcare centres specializing in stroke treatment. The Canadian Stroke Best
389 Practice Guidelines state that virtual care services are a cost-effective tool to support health
390 systems in closing the urban/rural and tertiary/primary care gap.⁵⁶

391

392 In their 2012 article, Dr. Hakim suggests that the delivery of thrombolysis with the help of
393 virtual care is safe and achieves similar clinical outcomes as the same treatment delivered at
394 stroke centres. He further suggests that a virtual care approach could be used to provide training,
395 teaching, and therapy in the recovery phase for stroke patients living in remote regions.⁵⁷

396 Zimmer *et al.* discuss the training necessary to establish a stroke-focused virtual care system
397 using a clinical toolkit in the Ontario Stroke System. The key components include clinical
398 workflow algorithms, nursing/physician competencies, an education/training flowchart,
399 protocols, technical readiness, evaluation tools, and resource contact information. Results from
400 their study suggest that this training system facilitated efficiencies and standardization of practice
401 to ensure optimal acute stroke management.⁵⁸ Taralson and colleagues also studied a similar
402 training protocol applied in Alberta. They identified that an enthusiastic local leadership team,

403 with strong physician support, and an equally supportive hub site stroke team are necessary for
404 the implementation of successful remote stroke centres. Regular participation in mock code drills
405 could also improve staff confidence and competency, leading to better patient outcomes.⁵⁹ This
406 program established and developed evidence-based guidelines in order to implement virtual care
407 across the continuum of stroke care.⁶⁰ Glasser and colleagues comment on the specific nursing
408 competencies required to effectively use virtual care technology in this context, and stated that
409 interpersonal communication and collaboration, and technology-related skills including the
410 security of data and effective documentation of virtual visits are key areas to focus.⁶¹ In patient
411 centered care, where a degree of cognitive impairment is certain, facilitated care management
412 using virtual care, appointment and instructional supports serves the individual and their
413 informal care providers.

414
415 Khan *et al.* recounted one of the first Canadian virtual care experiences for acute stroke treatment
416 in remote regions in which a critical care line was used by distant sites to connect to a physician
417 with stroke-expertise at a hub site for patient examination and computed tomography (CT) scan
418 assessment via a two-way video and audio link. Over a two-year period, the system was used 211
419 times, of which 45 patients (21%) were treated effectively without transfer. In this study, the
420 number of transfers decreased 92.5% from 144 to 15 at one of the remote sites. These results
421 suggest that virtual care could lead to a reduction in the number of patients requiring transfer to a
422 tertiary care center benefiting quality of life and health economics.⁶² Silver later provided an
423 editorial commentary regarding the results—stating that the number of patients in the specific
424 subgroups are too small to draw firm conclusions, but that the results suggest that virtual care
425 could be non-inferior to in-person care in these settings.⁶³ Stroke quality indicators were later
426 compared between patients treated remotely using this program and those who received care
427 from an on-site stroke specialist, showing that they were indeed comparable.⁶⁴ Similar results
428 were reported for the Ontario system.⁶⁵ The rationale for not yet nationalizing such a virtual care
429 program remains unclear.

430
431 There is a need for CT-scans to assess cerebrovascular accidents to rule out brain haemorrhage
432 risk prior to thrombolysis. This expensive equipment is not widely available in rural areas and
433 remote healthcare sites, yet portable CT-scanners are brought into these rural sites and can be
434 operated after minimal training. A portable CT-scanner at a remote site was implemented in the
435 evaluation of patients who were not within timely reach of stroke experts.⁶⁶ Recently, a CT-
436 equipped stroke ambulance was used to enable brain imaging at the patient's location. This
437 example of advanced paramedic technology suggests the potential for decentralizing care in
438 remote areas to bring the “hospital to the patient.” While initial success has been documented,

439 the question of cost-effectiveness, particularly in the rural setting, requires further study and is an
440 important part of ongoing research studies.⁶⁷ Lastly, Mitchell *et al.* did a study about a
441 promising radiology-focused emergency medicine program that would allow for urgent detection
442 of brain hemorrhages, which could play an important role in the future of virtual care-based
443 stroke care.⁶⁸

444
445 The disparities in CVD rates among Canadian Indigenous populations contribute to increased
446 rates of stroke, and therefore some researchers have partnered with Indigenous organizations to
447 work towards developing culturally appropriate services and support programs. Bodnar reported
448 on projects undertaken within the Northwestern Ontario Regional Stroke Network centered
449 around the development of educational materials and strategies, and virtual care-based initiatives
450 designed to meet the unique needs of Indigenous peoples.⁶⁹ After stroke, extensive rehabilitation
451 is often needed, involving physiotherapists, occupational (OT) and speech therapists, and social
452 workers, many of whom are not accessible to remote populations, nor trained in cultural safety
453 aligned with community values. French and colleagues reported on a multidisciplinary virtual
454 care solution; over a five-month period, 10 consultations took place, with an average of 7.22
455 recommendations and referrals per visit (range 4-10). These consultations focused on mobility,
456 education, resuming roles, and community participation. The experience was rated good to
457 excellent by both patients and clinicians for 95.2% (SD=0.44) of the consultations. However,
458 audio quality was rated as poor to fair by the patients in 75.0% (SD=0.82) of visits. All
459 participants reported as willing to recommend the system to others. As is a common theme in
460 this review, healthcare, community, and virtual care partnerships were critical to the success of
461 this program.⁷⁰ Linkewich and colleagues reported on an analogous virtual care tool used to
462 conduct OT home safety assessments for a similar patient population. The OTs who participated
463 reported confidence in making practice recommendations using the program, however, a
464 comment about needing to “sense” the client in a different way was repeatedly made, suggesting
465 that reduced non-verbal body language could be a disadvantage of the tool. The client and all
466 OTs were willing to recommend the virtual assessment system. Audio quality was also reported
467 to be problematic, as in the previous study.⁷¹ Technology based experiential quality is a
468 surmountable issue and can be overcome through cell-tower and emerging satellite high-speed
469 connectivity. These findings also emphasize the goal of virtual care should not be to eliminate in-
470 person systems but rather focus them and integrate with it for productivity, efficiency, and
471 patient outcome or experience benefit.

472
473 Moving On after Stroke (MOST®) is a group-based, self-management program for stroke
474 survivors and their caregivers consisting of information sharing, facilitated discussions, goal-

475 setting, and physical exercise. Taylor *et al.* simultaneously delivered the program to local
476 participants onsite in Thunder Bay, Ontario and via virtual care to participants living in small,
477 remote communities. Their objective was to explore the experiences of remote participants and
478 their perceptions regarding factors that enable or limit their participation, and to obtain
479 suggestions for enhancing delivery. As such, we can appreciate the preventative health benefit of
480 virtual care. Interviews, followed by thematic analysis, with 19 participants revealed that there
481 was value in not having to travel long distances for appointments. Many patients reported
482 “feeling as if they were in the same room” but some patients acknowledged that there were
483 limitations such as a loss of subtleties in communication. Some facilitators found it difficult to
484 discern whether the exercise routines were appropriate for the participants. A preliminary face-
485 to-face meeting and enhanced local support were found to improve the experience.⁷² Patient
486 compliance and preventative health can be a combined consideration in healthcare and
487 environmental sustainability—respect the person and the planet by reducing the distance
488 between people.

489
490 Whelan *et al.* reported results from the Saskatchewan Cerebrovascular Center virtual care study
491 regarding consults and post-operative follow up visits. Over a two-year period, 184 patients who
492 were surveyed following virtual visits saved an average of 243 kilometres, which was a
493 cumulative total of 43, 948 kilometres saved and an average patient-perceived financial savings
494 of \$445 CAD per visit. All but one patient (94%) reported being satisfied. However, all patients
495 were willing to use the system again.⁷³ Sakakibara *et al.* reported findings of a similar program
496 based in Vancouver, whereby 102 patients (of which 37.2% were rural) completed a survey
497 about their experiences using a system designed specifically for low-cost consumer technologies.
498 While they found that the delivery of rehabilitation services using these technologies was both
499 feasible and desirable by many stroke survivors, 71% of respondents believed their quality of
500 care would be less than in-person rehabilitation. Therefore, the authors concluded that virtual
501 care should augment and not replace in-person rehabilitation, but in cases where in-person
502 rehabilitation is neither accessible nor possible, then virtual care is an acceptable substitution.⁷⁴
503 Lastly, Appireddy, *et al.* reported results from a 6-month study using virtual care for post-stroke
504 follow-up care throughout the Kingston Health Sciences Centre in Ontario. This study included
505 75 participants (of which 39% were rural) and they found that: 1) There was a statistically
506 significant shorter wait-time for a virtual appointment compared to in-person (median 60 vs 78
507 days). 2) The virtual care visits were also shorter in duration, taking on an average of 10 minutes
508 to deliver follow-up care with a high degree of patient satisfaction versus an average of 90
509 minutes for in-person care. 3) On average, the total time saved by patients per visit was 80
510 minutes, of which 44 minutes was travel time. 4) Travel distance avoided by the patients was an

511 average of 30.1 km. 5) The estimated total out-of-pocket cost savings for patients per visit was
512 \$52.83. 6) The estimated savings (opportunity cost for in-person outpatient care) for their entire
513 virtual care pilot project was \$23,832 - \$28,584 CAD. The patient satisfaction with the virtual
514 system was good compared with their prior personal experience with in-person outpatient care.⁷⁵
515 A point worthy of exploration is the discrepancy in patient cost-savings mentioned in this study
516 as compared with the figures cited previously of \$445 and \$500 CAD. The fact that this study
517 contained only 39% rural patients, whereas the other two studies were entirely composed of rural
518 patients may indicate that much of the cost-savings are likely related to food, parking,
519 accommodation, and not simply mileage. This discrepancy may also reflect the fact that rural
520 Saskatchewan and Alberta have greater cost to distance travel ratios than Ontario, or perhaps the
521 cost discrepancy is due to lack of inflation adjustment. Incorporating health economic analyses to
522 virtual care pilots, implementation, monitoring should be emphasized. Health value
523 demonstration initiatives are ideally well powered and longitudinal partnerships between
524 academic institutes and health authorities.

525 **Discussion**

526 To our knowledge, this is the first review of recent publications that examines the use of virtual
527 care technology seeking to benefit patients with CVD who are living in rural Canadian locations.
528 We have attempted to understand the effectiveness of the various interventions, which have
529 generally had positive effects among the patient population of interest. The specific subjective
530 benefits of virtual care include reduced hospitalization and readmissions, improved mortality
531 rates, increased cost-effectiveness for patients and hospitals, improved quality of life for patients,
532 and an increase in self-management of CVD. Further benefit is derived through better disease
533 prevention and increased patient investment in their health span. Virtual care is not a panacea for
534 all rural medicine needs. However, it is clear that value is being extracted, predominantly by
535 three Canadian provinces (BC, ON, and QC), which is surprising since these provinces have the
536 greatest urban concentrations of people.⁷⁶ These provinces also account for the majority of
537 research pertaining to rural medicine in general, which indicates potential inequities in medical
538 research contrary to the objectives of the Canada Health Act. Remarkably, the Western Prairies,
539 Territories, and the Atlantic provinces (with seemingly the most need and the most to gain from
540 virtual care innovations) are not well represented in this subsection of the literature. In the
541 Canadian context, this puts all provinces at a disadvantage by being over-reliant on health
542 transfers from the federal government instead of leadership by strength. Establishing an online,
543 virtual care institute amongst low population density provinces might be possible, yet most
544 supercluster and centers of excellence are concentrated in dense urban zones. Exploring this
545 potential inequity from a legal, social and humanities perspective should be of interest to
546 researchers moving forward.

547
548 While still largely unadopted on a national level, the data indicates that systems in place for
549 acute pathologies like stroke and STEMI are the most well-established and far-reaching, while
550 systems focused on more chronic subtypes of CVD like HF, hypertension, and arrhythmias, are
551 lagging and largely remain in the pilot phase. This is an important point to highlight, as the
552 management of chronic disease is likely to have the greatest impact. Studies performed within
553 government by health departments or industry in the form of white papers, were inaccessible for
554 review. As a result, very few randomized control trials were identified and much of the work in
555 this area is only being shared in conference proceedings. In the wake of the COVID-19
556 pandemic, this dynamic is likely to rapidly evolve given the expedited policy changes
557 surrounding the use of virtual care technologies.⁷⁷ Innovative solutions like the ones discussed
558 here are now of critical importance given their ability to reduce contact between healthcare
559 providers and vulnerable patient populations.

560 Overall, there is an interest to support virtual care among the stakeholders investigated in this
561 study, despite some perceived barriers when compared to in-person approaches to healthcare.
562 Despite this enthusiasm, there is still insufficient evidence to objectively support the outcomes,
563 health economics, physician/patient-satisfaction, and privacy concerns due to a lack of trials and
564 peer-reviewed evidence at this time. CVD risk factor management using virtual care needs peer
565 reviewed study in the Canadian context to build an evidence base that informs policy
566 development. Such studies should emphasize the rationale, define the intended benefit and the
567 comparator arm, and address cost-effectiveness or any barriers to implementation. Until that
568 time, it remains presumed but uncertain that virtual care in Canada can assist in the prevention of
569 CVD, when compared with more specified conditions requiring interventional support.

570
571 Despite the fact that the collective studies lacked the desired scientific rigour, or are of limited
572 meta-data, the qualitative insights provide valuable recommendations for researchers planning to
573 deploy virtual care technologies in the future. These have been summarized in Figures 3 and 4.
574 Briefly, a common point of note was the need to involve patients as stakeholders during the
575 planning of virtual care distribution strategies. Kim and colleagues provide insightful
576 commentary as to how best to involve patients.⁷⁸ Another was the need to clarify the roles and
577 responsibilities of all members of the healthcare team related to the virtual care system,
578 specifically stressing who will be responsible for the training of patients and informal care
579 providers. This may represent an obstacle best overcome by online education videos or other
580 patient assistive products and services. Role clarification is needed between the payer and the
581 provider for services and should be explored in future studies. Canada remains predominantly a
582 single/public-paying system and is slow to integrate innovations predominantly developed by the
583 private sector. Establishing *a priori* criteria to be met by the private sector to deliver virtual care
584 would be welcomed, as the preferences of payers are a critical policy consideration for health
585 authorities. Establishing victory conditions (that is, clear target endpoints), would avoid any
586 further languishing of incorporating healthcare technology innovation that is greatly needed, and
587 so as to be prepared for crisis rather than react to it in the example of implementing virtual care
588 during a pandemic.

589
590 The current disparities in health metrics suggest that patients in rural areas, particularly
591 Indigenous nations, desire greater diversity in healthcare delivery, desire to contribute culturally
592 and require specific accommodations. In addition to virtual care services, advanced care
593 paramedics, mobile care units, increased scope of practice for rural pharmacists, augmented
594 extramural nursing and home care options, and physician assistants, could all contribute to rural
595 healthcare teams. Many of these auxiliary topics, in addition to the challenges of policy and

596 privacy, were not well addressed in these studies and should be the subjects of future research
597 and policy development. Similarly, little in the way of economic analyses were reported, nor is
598 there a consensus for adopting cost-saving or cost-deferring innovations or establishment of
599 time-dependent value-thresholds. Those studies that did report on the cost savings of the
600 intervention averaged ~\$475 CAD per appointment for patients living in rural communities.
601 Using a reported rural Canadian population of 19%, data showing ~500,000 HF patients, and an
602 estimated 10 HF-related healthcare appointments per year per patient, equating to \$451Million
603 CAD in lost opportunity, illustrating that virtual care tools could significantly reduce out-of-
604 pocket expenses for patients.^{79, 80} To further illustrate, we will assume that 60% of all in-person
605 visits could be performed using virtual care tools and systems, as has been the low estimate
606 during the COVID-19 pandemic. The Commonwealth Fund reports that the average annual
607 physician visits per capita in Canada in 2017 was 6.8.⁸¹ For a current population of 37.59M, and
608 an opportunity cost ranging between \$31-\$500 CAD per visit, this extrapolates to potential cost
609 savings of ~\$4.8 - \$77 billion CAD. This is to say nothing with respect to the cost savings for the
610 healthcare system itself, which would likely be enough to recoup the costs of purchasing and
611 implementing a virtual care system within a short period of time. Industry partnered health value
612 demonstration initiatives dedicated to regions with a high need can accelerate access to this
613 opportunity by engaging with academic institutes and health authorities in tri-lateral objectives to
614 patient-centered care.

615

616 *Study Limitations and Strengths*

617 This systematic review has limitations. We evaluated published articles written in English from
618 three relevant databases, therefore, virtual care interventions described in other languages or
619 those not peer reviewed but communicated internally within government health departments
620 were likely missed. Additional search results might have been found in other databases and
621 sources (eg, grey literature, books) and were therefore not included in this review. We also did
622 not evaluate articles that were published prior to 2010, as we decided that 10 years was a
623 sufficient amount of time to gather material germane to our objectives in a country with a paucity
624 of standard virtual care. Further, only a single reviewer screened the included studies, therefore
625 unconscious selection bias may be at play, however studies show that this approach still
626 represents an appropriate methodological shortcut.⁸² Strengths of this review include the use of
627 an experienced librarian for the development of the search strategy and adherence to the
628 PRISMA guidelines.

629

630 *Future Directions*

631 Many important areas relating to virtual care were not well addressed and require further study.
632 These include: 1) the role of the public and private sectors in evaluating, disseminating, and
633 overseeing the use of virtual care technology, 2) appropriate remuneration rates for using virtual
634 care technology, 3) incentivizing *a priori* criteria for using/adopting virtual care technology, and
635 4) preparing future healthcare providers to incorporate virtual care technology in cardiovascular
636 practices, such as providing training in undergraduate medical education programs and providing
637 continuing medical education credits.

638

639 **Conclusion**

640 In sum, it is clear that efforts are being made to ensure equitable care of patients diagnosed with
641 all subtypes of CVD, although future studies targeted in the realm of hypertension management
642 among rural Canadian populations are greatly needed. The systems for acute pathologies seem to
643 be the most well-established, while those focused on chronic cardiac conditions remain in the
644 pilot phase. The evidence presented here also indicates potential for long-term healthcare savings
645 with virtual care solutions. Given the themes identified in this review that virtual care
646 technologies are efficacious, well-accepted, and economical, we feel that these systems should
647 be adopted and better integrated into clinical cardiology practices in order to care for patients
648 diagnosed with CVD living in rural areas of Canada. Funding and partner agencies should
649 prioritize high-risk high-reward regions with considerable rural populations to maximize early
650 returns on investments in virtual care.

651 **Acknowledgments**

652 The authors would like to acknowledge the help of Jackie Phinney (Librarian, W.K. Kellogg
653 Health Sciences Library, Dalhousie University) who assisted in the development of the literature
654 search strategy.

655

656 **Funding Source Declaration**

657 This work was generously supported by AGE-WELL NCE Inc., a member of the Networks of
658 Centres of Excellence program, the New Brunswick Health Research Foundation and the New
659 Brunswick Innovation Foundation. Neither of these organizations played a role in the design,
660 data collection, analysis, or interpretation of this literature review, or in preparation of this
661 manuscript.

662

663 **Declarations of Interest**

664 KRB has a direct financial interest in medical technology innovation companies as a director or
665 shareholder of: NBBM Inc. and Routinify Inc.; has received partnership grant/contract funding
666 or financial in-kind support from or serves as a medical science advisor to: Ausculsciences Inc.;
667 BaioTeq Inc.; Cloud-Dx Inc.; eVisitNB (Maple Inc.); Medtronic Canada Inc.; Serviere Canada
668 Inc.; IBM Canada; and the Government of New Brunswick. HC has a direct financial interest in
669 medical technology innovation companies as a director or shareholder of eVisitNB (Maple Inc.)
670 JFL and SL have received medical technology innovation partnership grant/contract funding or
671 financial in-kind support from Medtronic Inc.; Serviere Canada Inc. RB, SM, and CWW have no
672 conflicts of interest to disclose relevant to the present work. None of these enterprises played a
673 role in the design, data collection, analysis, or interpretation of this literature review, or in
674 preparation of this manuscript.

675

676 **Appendix**

677

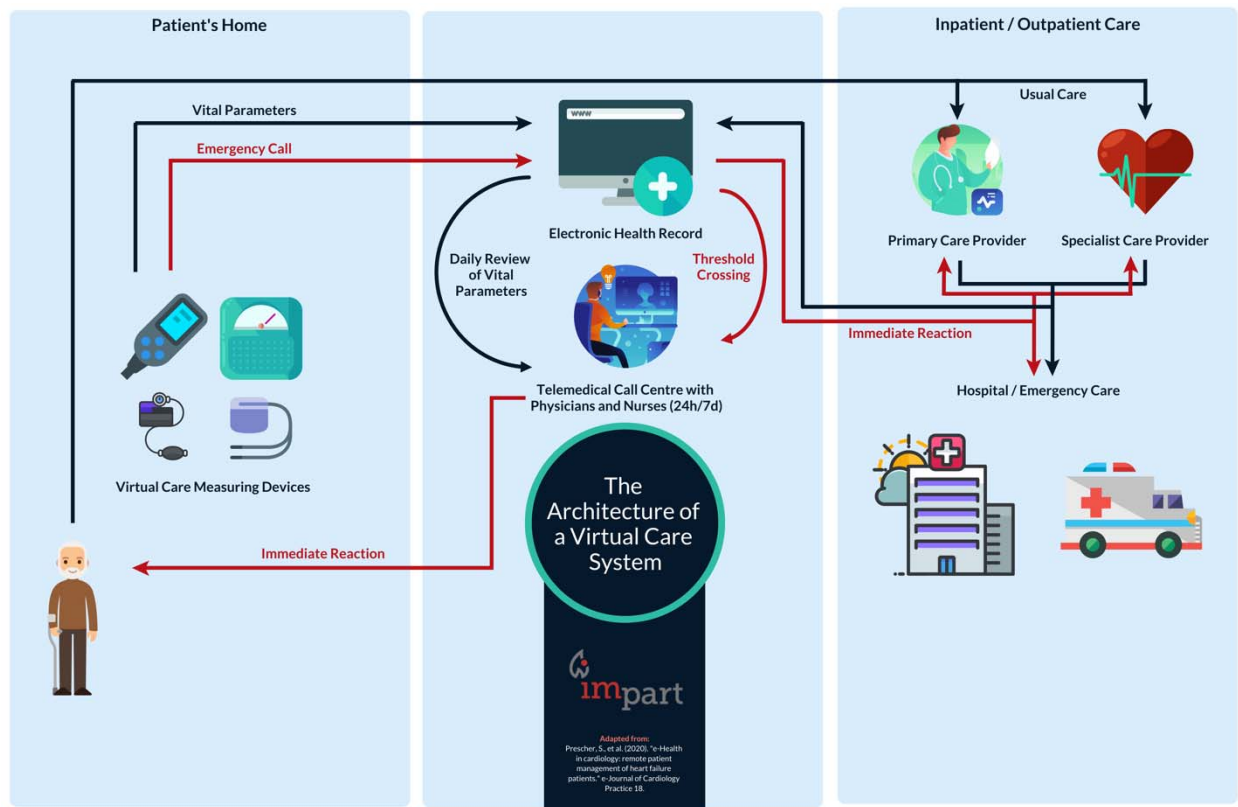


Figure 1. The architecture of a virtual care system.

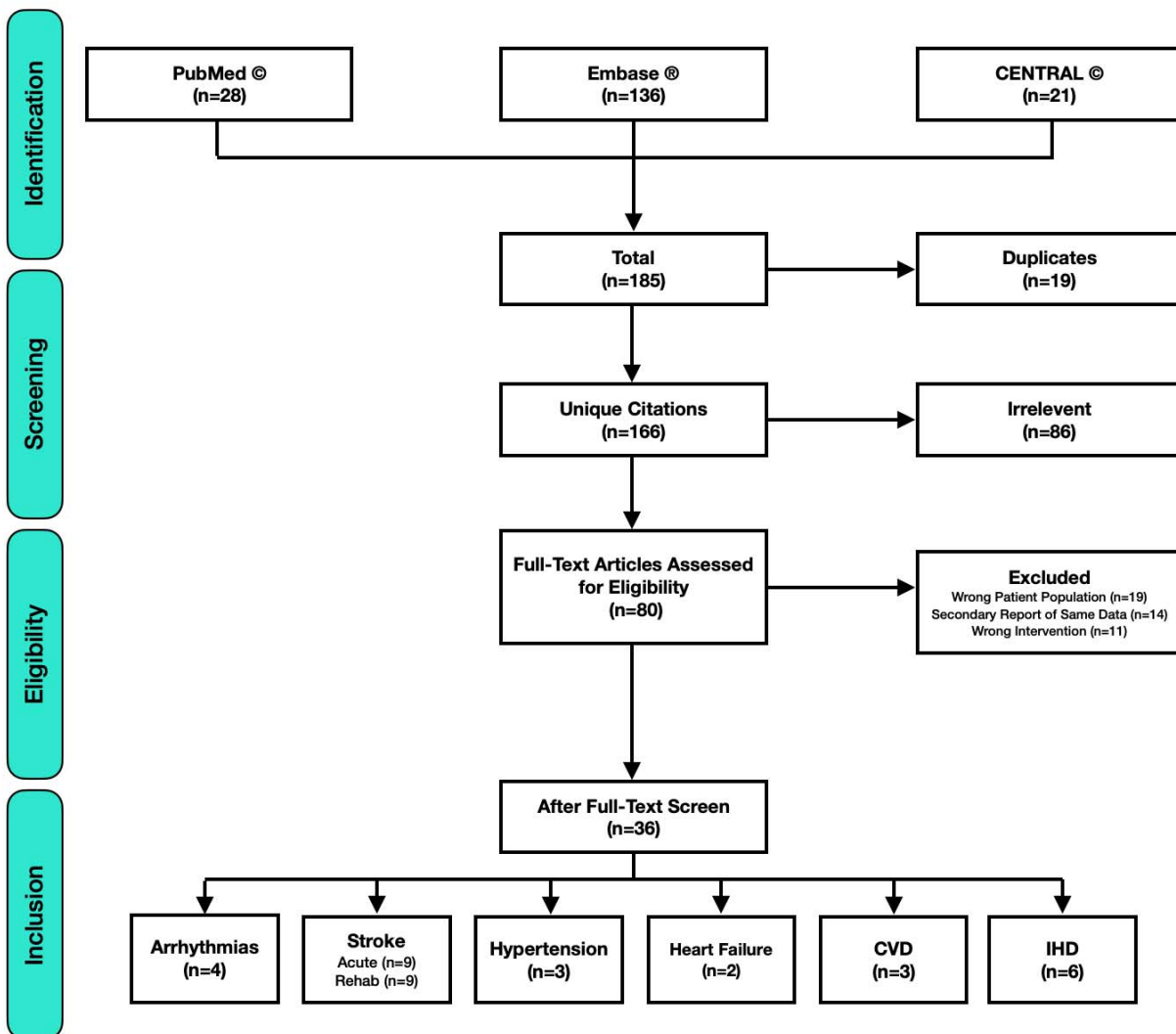


Figure 2. Flow chart of literature search and study extraction process, where n represents the number of studies in each group.

678

679

Figure 3. Summary of virtual care recommendations.



Figure 4. Summary of practical objectives for future virtual care programs.

681



682 **References**

- 683 1. Canadian Institute for Health Information, Disparities in Primary Health Care Experience
684 Among Canadians with Ambulatory Care Sensitive Conditions. 2012.
- 685 2. Garcia, M.C., et al., *Reducing Potentially Excess Deaths from the Five Leading Causes of*
686 *Death in the Rural United States*. MMWR Surveill Summ, 2017. **66**(2): p. 1-7.
- 687 3. Subedi, R., T.L. Greenberg, and S. Roshanafshar, *Does geography matter in mortality? An*
688 *analysis of potentially avoidable mortality by remoteness index in Canada*. Statistics
689 Canada Health Reports, 2019.
- 690 4. Ahmed, S. and R.K. Shahid, *Disparity in cancer care: a Canadian perspective*. Curr
691 Oncol, 2012. **19**(6): p. e376-82.
- 692 5. Luu, J., et al., *Access to Routine Medical Care and Cardiovascular Disease Outcomes in a*
693 *Rural Canadian Population*. Canadian Journal of Cardiology, 2017. **33**(10).
- 694 6. Benchimol, E.I., et al., *Rural and urban disparities in the care of Canadian patients with*
695 *inflammatory bowel disease: a population-based study*. Clin Epidemiol, 2018. **10**: p. 1613-
696 1626.
- 697 7. Canadian Medical Association, *Ensuring equitable access to care: Strategies for*
698 *Governments, Health System Planners, and the Medical Profession*. 2013.
- 699 8. Canadian Institute for Health Information, *Health Care in Canada: A Focus on Wait*
700 *Times*. 2012.
- 701 9. Owens, B., *Telemedicine on the rise but lagging in Canada*. CMAJ, 2018. **190**(38): p.
702 E1149-E1150.
- 703 10. Prescher, S., J. Koehler, and F. Koehler, *e-Health in cardiology: remote patient*
704 *management of heart failure patients*. e-Journal of Cardiology Practice, 2020. **18**.

- 705 11. Canadian Medical Association (2020). *Virtual care: Recommendations for scaling up*
706 *virtual medical services*. From: [https://www.cma.ca/sites/default/files/pdf/virtual-](https://www.cma.ca/sites/default/files/pdf/virtual-care/ReportoftheVirtualCareTaskForce.pdf)
707 [care/ReportoftheVirtualCareTaskForce.pdf](https://www.cma.ca/sites/default/files/pdf/virtual-care/ReportoftheVirtualCareTaskForce.pdf)
- 708 12. The World Health Organization, *WHO eHealth Resolution 58.28*. 2005.
- 709 13. Castro, D., B. Miller, and A. Nager, *Unlocking the Potential of Physician-to-Patient*
710 *Telehealth Services*. Information Technology and Innovation Foundation, 2014.
- 711 14. Board on Health Care Services; Institute of Medicine, *The Evolution of Telehealth: Where*
712 *Have We Been and Where Are We Going? The Role of Telehealth in an Evolving Health*
713 *Care Environment: Workshop Summary.*, N.A.P. (US), Editor. 2012: Washington (DC).
- 714 15. Cannon, C., *Telehealth, Mobile Applications, and Wearable Devices are Expanding*
715 *Cancer Care Beyond Walls*. *Semin Oncol Nurs*, 2018. **34**(2): p. 118-125.
- 716 16. Lim, S.S., et al., *A comparative risk assessment of burden of disease and injury attributable*
717 *to 67 risk factors and risk factor clusters in 21 regions, 1990-2010: a systematic analysis*
718 *for the Global Burden of Disease Study 2010*. *Lancet*, 2012. **380**(9859): p. 2224-60.
- 719 17. James, P.A., et al., *2014 evidence-based guideline for the management of high blood*
720 *pressure in adults: report from the panel members appointed to the Eighth Joint National*
721 *Committee (JNC 8)*. *JAMA*, 2014. **311**(5): p. 507-20.
- 722 18. Padwal, R.S., et al., *Cost-effectiveness of home blood pressure telemonitoring and case*
723 *management in the secondary prevention of cerebrovascular disease in Canada*. *J Clin*
724 *Hypertens (Greenwich)*, 2019. **21**(2): p. 159-168.
- 725 19. Lang, J. J., et al. (2018). *Global Burden of Disease Study trends for Canada from 1990 to*
726 *2016*. *CMAJ* **190**(44): E1296-E1304.

- 727 20. Benjamin, E.J., et al., *Heart Disease and Stroke Statistics-2018 Update: A Report from the*
728 *American Heart Association*. *Circulation*, 2018. **137**(12): p. e67-e492.
- 729 21. Moher, D., et al., *Preferred reporting items for systematic reviews and meta-analyses: the*
730 *PRISMA statement*. *PLoS Med*, 2009. **6**(7): p. e1000097.
- 731 22. Jarvis-Selinger, S., et al., *Internet-based support for cardiovascular disease management*.
732 *International Journal of Telemedicine and Applications*, 2011
- 733 23. Cameron, J.E., et al., "*In this together*": *Social identification predicts health outcomes (via*
734 *self-efficacy) in a chronic disease self-management program*. *Social Science and Medicine*,
735 2018. **208**: p. 172-179.
- 736 24. Stuckey, M.I., et al., *A lifestyle intervention supported by mobile health technologies to*
737 *improve the cardiometabolic risk profile of individuals at risk for cardiovascular disease*
738 *and type 2 diabetes: study rationale and protocol*. *BMC Public Health*, 2013. **13**: p. 1051.
- 739 25. Andrikopoulou, E., K. Abbate, and D.J. Whellan, *Conceptual model for heart failure*
740 *disease management*. *Canadian Journal of Cardiology*, 2014. **30**(3): p. 304-311.
- 741 26. Grant, R., et al., *Cardiovascular nurses: The key factor in the success of the first Canadian*
742 *heart failure remote monitoring clinic*. *Canadian Journal of Cardiology*, 2012. **28**(5): p.
743 S432.
- 744 27. Wassef, A.W., et al., *A first in Canada: The St. Boniface Hospital heart failure remote*
745 *monitoring clinic experience*. *Canadian Journal of Cardiology*, 2012. **28**(5): p. S342-S343.
- 746 28. Toback, M., *The effectiveness of telehealth nursing in heart failure self-management*.
747 *Canadian Journal of Cardiology*, 2017. **33**(10): p. S213-S214.
- 748 29. TEC4Home Healthcare Innovation Community. *Supporting Heart Failure Patient*
749 *Transitions from Acute to Community Care with Home Telemonitoring Technology: A*

- 750 *Protocol for a Provincial Randomized Controlled Trial (TEC4Home)*. JMIR Res Protoc,
751 2016. **5**(4): p. e198.
- 752 30. Novak Lauscher, H., et al., *TEC4Home heart failure: Using home telemonitoring to*
753 *decrease ED readmissions and clinical flow*. Canadian Journal of Emergency Medicine,
754 2018. **20**: p. S56-S57.
- 755 31. Hage, E., et al., *Implementation factors and their effect on e-Health service adoption in*
756 *rural communities: a systematic literature review*. BMC Health Serv Res, 2013. **13**: p. 19.
- 757 32. Jaana, M. and H. Sherrard, *Rural-Urban Comparison of Telehome Monitoring for Patients*
758 *with Chronic Heart Failure*. Telemedicine Journal and e-Health from the American
759 Telemedicine Association, 2019. **25**(2): p. 101-108.
- 760 33. Fraser, J.D., et al., *Guidelines for pacemaker follow-up in Canada: a consensus statement*
761 *of the Canadian Working Group on Cardiac Pacing*. Can J Cardiol, 2000. **16**(3): p. 355-63,
762 367-76.
- 763 34. Gillis, A.M., et al., *Guidelines for implantable cardioverter defibrillator follow-up in*
764 *Canada: a consensus statement of the Canadian Working Group on Cardiac Pacing*. Can J
765 Cardiol, 2003. **19**(1): p. 21-37.
- 766 35. Yee, R., et al., *Canadian Cardiovascular Society/Canadian Heart Rhythm Society Joint*
767 *Position Statement on the Use of Remote Monitoring for Cardiovascular Implantable*
768 *Electronic Device Follow-up*. Canadian Journal of Cardiology, 2013. **29**(6): p. 644-651.
- 769 36. Amelio, J. and A. Manchak, *Telehealth arrhythmia clinic: Initial experience report*.
770 Canadian Journal of Cardiology, 2010. **26**((Amelio J.; Manchak A.) Edmonton, AB,
771 Canada): p. 133D.

- 772 37. Flavelle, S., et al., *Remote monitoring for ICD follow-up: Connecting technology, clinic*
773 *processes, patient care and best practice*. Canadian Journal of Cardiology, 2011. **27**(5): p.
774 S354.
- 775 38. Forman, J., et al., *Evaluating the integration of remote monitoring for cardiovascular*
776 *implantable electronic device follow-up*. Canadian Journal of Cardiology, 2014. **30**(10): p.
777 S357-S358.
- 778 39. Sparkes, J., R. Valaitis, and A. McKibbin, *A usability study of patients setting up a cardiac*
779 *event loop recorder and BlackBerry gateway for remote monitoring at home*. Telemedicine
780 Journal and e-Health from the American Telemedicine Association, 2012. **18**(6): p. 484-
781 490.
- 782 40. Rush, K.L., et al., *Planning Telehealth for Older Adults with Atrial Fibrillation in Rural*
783 *Communities: Understanding Stakeholder Perspectives*. Clinical Nursing Research, 2019.
784 **28**(2): p. 130-149.
- 785 41. Rush, K.L., et al., *Atrial fibrillation care in rural communities: a mixed methods study of*
786 *physician and patient perspectives*. BMC Family Practice, 2019. **20**(1): p. 144.
- 787 42. Tanguay, A., et al., *Detection of STEMI Using Prehospital Serial 12-Lead*
788 *Electrocardiograms*. Prehosp Emerg Care, 2018. **22**(4): p. 419-426.
- 789 43. O'Gara, P.T., et al., *2013 ACCF/AHA guideline for the management of ST-elevation*
790 *myocardial infarction: a report of the American College of Cardiology*
791 *Foundation/American Heart Association Task Force on Practice Guidelines*. Circulation,
792 2013. **127**(4): p. e362-425.

- 793 44. Tanguay, A., et al., *Rural Patient Access to Primary Percutaneous Coronary Intervention*
794 *Centers is Improved by a Novel Integrated Telemedicine Prehospital System*. Journal of
795 Emergency Medicine, 2015. **49**(5): p. 657-664.
- 796 45. Lear, S.A., *The Delivery of Cardiac Rehabilitation Using Communications Technologies:*
797 *The "Virtual" Cardiac Rehabilitation Program*. The Canadian Journal of Cardiology, 2018.
798 **34**(10 Suppl 2): p. S278-S283.
- 799 46. Lear, S.A., et al., *Randomized trial of a 'virtual' cardiac rehabilitation program delivered*
800 *at a distance via the internet*. Circulation, 2013. **128**(22).
- 801 47. Mendell, J., et al., *What Do Patients Talk About? A Qualitative Analysis of Online Chat*
802 *Sessions with Health Care Specialists During a "Virtual" Cardiac Rehabilitation Program*.
803 Telemedicine Journal and e-Health from the American Telemedicine Association, 2019.
804 **25**(1): p. 71-78.
- 805 48. Pistawka, A., J. Gabelhouse, and D. Butts, *Telehealth delivery of cardiac education to*
806 *rural communities*. Canadian Journal of Cardiology, 2017. **33**(10): p. S224-S225.
- 807 49. Campbell, N., et al., *A framework for discussion on how to improve prevention,*
808 *management, and control of hypertension in Canada*. Can J Cardiol, 2012. **28**(3): p. 262-9.
- 809 50. Tobe, S.W., et al., *Effect of nurse-directed hypertension treatment among First Nations*
810 *people with existing hypertension and diabetes mellitus: The Diabetes Risk Evaluation and*
811 *Microalbuminuria (DREAM 3) randomized controlled trial*. CMAJ, 2006. **174**(9): p. 1267-
812 71.
- 813 51. Yeates, K., et al., *The Effectiveness of Text Messaging for Detection and Management of*
814 *Hypertension in Indigenous People in Canada: Protocol for a Randomized Controlled*
815 *Trial*. JMIR research protocols, 2017. **6**(12): p. e244.

- 816 52. Tobe, S.W., et al., *Diagnosing hypertension in Indigenous Canadians (DREAM-GLOBAL):*
817 *A randomized controlled trial to compare the effectiveness of short message service*
818 *messaging for management of hypertension: Main results.* Journal of Clinical
819 Hypertension, 2019. **21**(1): p. 29-36.
- 820 53. Padwal, R.S., *Designing interventions for blood pressure control in challenging settings:*
821 *Active not passive intervention is needed.* Journal of Clinical Hypertension (Greenwich,
822 Conn.), 2019. **21**(1): p. 37-38.
- 823 54. Peltier, C. (2018). *An Application of Two-Eyed Seeing: Indigenous Research Methods with*
824 *Participatory Action Research.* International Journal of Qualitative Methods **17**.
- 825 55. Saver, J.L., *Time is brain--quantified.* Stroke, 2006. **37**(1): p. 263-6.
- 826 56. Blacquiere, D., et al., *Canadian Stroke Best Practice Recommendations: Telestroke Best*
827 *Practice Guidelines Update 2017.* International Journal of Stroke, 2017. **12**(8): p. 886-895.
- 828 57. Hakim, A.M., *The future of stroke thrombolysis.* 2012. p. 8-13.
- 829 58. Zimmer, L. and L. Kelloway, *A clinical toolkit to support acute stroke management using*
830 *Telestroke in Ontario.* Canadian Journal of Neurological Sciences, 2010. **37**(3): p. S96.
- 831 59. Taralson, C., et al., *Telestroke in a remote site: One Northern Alberta hospital's experience*
832 *establishing acute stroke treatment by telehealth.* Stroke, 2014. **45**(12): p. e285.
- 833 60. Taralson, C., et al., *The expansion of telestroke across the continuum of care.* Stroke, 2014.
834 **45**(12): p. e265-e266.
- 835 61. Glasser, E., et al., *Nursing competencies for telestroke.* International Journal of Stroke,
836 2015. **10**((Lindsay P.) Heart and Stroke Foundation, Toronto, Canada): p. 48.
- 837 62. Khan, K.A., et al., *Telestroke in northern Alberta, Canada: A two-year experience with*
838 *small remote hospitals.* Stroke, 2010. **41**(4): p. e262-e263.

- 839 63. Silver, F.L., *Telestroke: The management of acute ischemic stroke from a distance.*
840 *Canadian Journal of Neurological Sciences*, 2010. **37**(6): p. 717-718.
- 841 64. Jeerakathil, T., et al., *Thrombolysis using telehealth has comparable results to non-*
842 *telehealth thrombolysis across northern Alberta: The Alberta provincial stroke strategy*
843 *(APSS).* *Stroke*, 2012. **43**(2).
- 844 65. Khan, F.B., et al., *Acute stroke care: Telestroke vs. on-site stroke specialist care. Results*
845 *from the Ontario telestroke experience.* *Stroke*, 2011. **42**(3): p. e340.
- 846 66. Shuaib, A., et al., *Introduction of portable computed tomography scanners, in the treatment*
847 *of acute stroke patients via telemedicine in remote communities.* *International Journal of*
848 *Stroke*, 2010. **5**(2): p. 62-66.
- 849 67. Shuaib, A. and T. Jeerakathil, *The mobile stroke unit and management of acute stroke in*
850 *rural settings.* *CMAJ*, 2018. **190**(28): p. E855-E858.
- 851 68. Mitchell, J.R., et al., *A smartphone client-server teleradiology system for primary*
852 *diagnosis of acute stroke.* *Journal of Medical Internet Research*, 2011. **13**(2): p. e31.
- 853 69. Bodnar, P., *Developing an aboriginal stroke strategy in Northwestern Ontario.* *Stroke*,
854 2011. **42**(11): p. e622-e623.
- 855 70. French, E.H., K.J. Reinikka, and M.P. Huijbregts, *Tele-rehab: The feasibility of using*
856 *telemedicine to deliver interprofessional stroke rehabilitation consultations in northern,*
857 *rural and remote communities.* *Stroke*, 2010. **41**(7): p. e506.
- 858 71. Linkewich, E., K. Harrington, and A. Oikonen, *“Virtual” home safety assessment after*
859 *stroke in remote aboriginal communities.* *Canadian Journal of Neurological Sciences*,
860 2010. **37**(3): p. S100.

- 861 72. Taylor, D.M., S.D. Stone, and M.P. Huijbregts, *Remote participants' experiences with a*
862 *group-based stroke self-management program using videoconference technology*. Rural
863 and Remote Health, 2012. **12**((Stone S.D.; Huijbregts M.P.)): p. 1947.
- 864 73. Whelan, K., A. Gardner, and M. Kelly, *The Saskatchewan cerebrovascular center:*
865 *Telehealth pilot project*. Stroke, 2014. **45**(12): p. e278-e279.
- 866 74. Sakakibara, B.M., et al., *A telehealth intervention to promote healthy lifestyles after stroke:*
867 *the stroke coach protocol*. Stroke, 2014. **45**(12): p. e285.
- 868 75. Appireddy, R., et al., *Home Virtual Visits for Outpatient Follow-Up Stroke Care: Cross-*
869 *Sectional Study*. Journal of Medical Internet Research, 2019. **21**(10): p. e13734.
- 870 76. Statistics Canada (2018). *Canada goes urban*. from
871 <https://www150.statcan.gc.ca/n1/pub/11-630-x/11-630-x2015004-eng.htm>.
- 872 77. Arnold, R.H., et al., *Rural and Remote Cardiology During the COVID-19 Pandemic:*
873 *Cardiac Society of Australia and New Zealand (CSANZ) Consensus Statement*. Heart Lung
874 Circ, 2020.
- 875 78. Kim, K.K., et al., *A Novel Stakeholder Engagement Approach for Patient-centered*
876 *Outcomes Research*. Med Care, 2018. **56 Suppl 10**: p. S41-S47.
- 877 79. Ross, H., et al., *Treating the right patient at the right time: access to heart failure care*. Can
878 J Cardiol, 2006. **22**(9): p. 749-54.
- 879 80. Statistics Canada (2011). *Canada's rural population since 1851*. from
880 [https://www12.statcan.gc.ca/census-recensement/2011/as-sa/98-310-x/98-310-](https://www12.statcan.gc.ca/census-recensement/2011/as-sa/98-310-x/98-310-x2011003_2-eng.cfm)
881 [x2011003_2-eng.cfm](https://www12.statcan.gc.ca/census-recensement/2011/as-sa/98-310-x/98-310-x2011003_2-eng.cfm)

- 882 81. The Commonwealth Fund (2019). *Average Annual Number of Physician Visits per Capita,*
883 *2017.* from [https://www.commonwealthfund.org/international-health-policy-center/system-](https://www.commonwealthfund.org/international-health-policy-center/system-stats/annual-physician-visits)
884 [stats/annual-physician-visits](https://www.commonwealthfund.org/international-health-policy-center/system-stats/annual-physician-visits)
- 885 82. Waffenschmidt, S., et al., *Single screening versus conventional double screening for study*
886 *selection in systematic reviews: a methodological systematic review.* BMC Med Res
887 Methodol, 2019. **19**(1): p. 132.