

1 **Full title: Clinical validation of a point-of-care antibody test for COVID-19**

2 **Short title: Validation of a COVID-19 antibody test**

3 **Monila Patel^{^*}, Yogesh Lakhotia^{##}, Sneha Shah[^], Nilay Suthar[^], Cherry Shah[^], Sankarrao Kola[§] and Radha**
4 **Rangarajan^{#&}**

5 *these two authors contributed equally

6

7 [^]Department of Medicine, Smt NHL Municipal Medical College, Ahmedabad, India

8 [§] Centre for Cellular Molecular Biology, Hyderabad, India

9 [#]HealthCubed India Private Limited, Bangalore, India

10 [&]Corresponding author

11

12

13 **Abstract**

14 The objective of this study was to evaluate the performance of a lateral flow antibody test for COVID-19,
15 approved for use in India. Although many point-of-care antibody tests are available globally, they have
16 been subjected to limited clinical validation. This has led to suboptimal outcomes in the field, where
17 antibody tests play a significant role in tracking the immunity of individuals and communities. In this study
18 an antibody test, ImmunoQuick that recognizes antibodies to the Nucleocapsid and Spike proteins of SARS
19 CoV-2 was tested in 100 symptomatic patients with a positive or negative diagnosis of COVID-19, based
20 on RT-PCR results. The overall sensitivity of the test was found to be 86.1% (95% CI: 76.4% to 92.8%) and
21 specificity 100% (95% confidence interval: 73.5% to 100%). The sensitivity reached a peak of 95.7% with
22 samples taken 17 days after the onset of symptoms. Overall, the sensitivity and specificity of the test are
23 sufficient for assessing seroprevalence.

24

25 Keywords: Covid-19, Antibody Test, Seroprevalence, Product Evaluation, Clinical study

26 **Introduction**

27 The COVID-19 pandemic is expected to persist beyond 2020, despite global efforts to contain the
28 infection. Tracking the extent of spread is one of the key ways in which policy decisions regarding the
29 opening of businesses and educational institutions can be made. This involves measuring the exposure of
30 individuals to the virus, assessing protection from reinfection and monitoring immunity at the population
31 level. Point-of-care (POC) antibody tests are well suited for this purpose; their cost and ease of use allow
32 for repeated testing in clinical and non-clinical settings. Several POC antibody tests based on lateral flow
33 immunochromatography have been approved for use globally (1). However, not all tests are backed by
34 robust validation data. Hence, there have been questions about their sensitivity and specificity when
35 deployed in the field (2, 3, 4, 5). In India, one of the earliest tests approved was from ImmunoScience India
36 Private Limited. We undertook a clinical study to confirm the performance of ImmunoScience's lateral
37 flow immunoassay, ImmunoQuick, that detects IgG and IgM antibodies against the Nucleocapsid and
38 Spike proteins of the SARS CoV-2 virus, from capillary blood (6). The study was conducted in a cohort of
39 individuals with influenza-like symptoms, who were hospitalized at the Sardar Vallabhbhai Patel Institute
40 of Medical Science and Research, Ahmedabad in the state of Gujarat. The objective of the study was to
41 measure the sensitivity and specificity of the assay in individuals who had a confirmed diagnosis of being
42 positive or negative for COVID-19. The data showed an overall sensitivity based on the detection of IgG
43 and IgM antibodies as 86.1% (95% CI: 76.4% to 92.8%) and specificity 100% (95% confidence interval:
44 73.5% to 100%). These performance characteristics are sufficient for tracking and monitoring the
45 immunity in individuals.

46 **Materials and Methods**

47 The study was conducted between 4 Jul 2020 and 18 Jul 2020 and was registered with the Clinical Trials
48 Registry of India with the registration number, CTRI/2020/07/026469. The study was approved by the

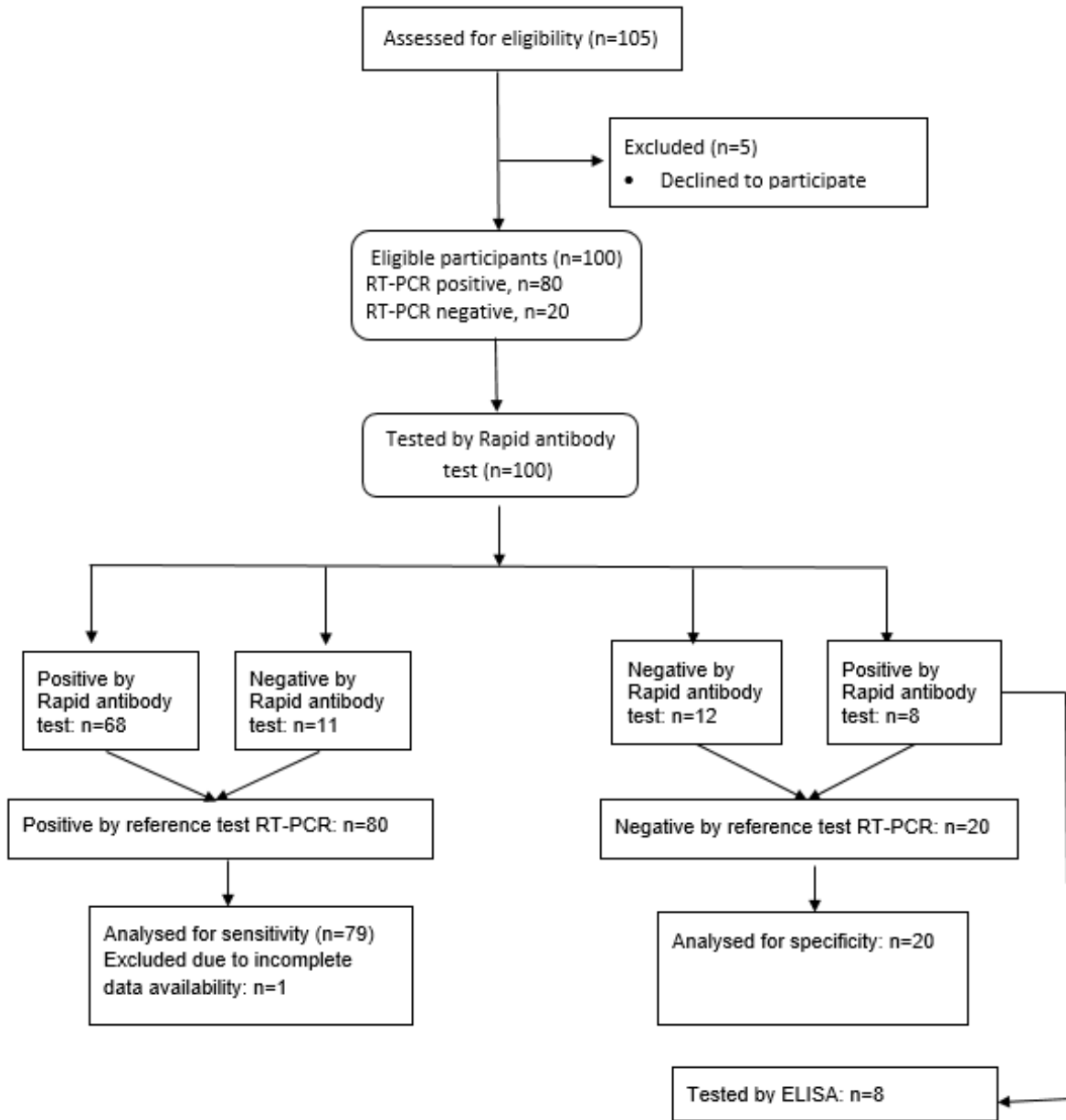
49 ethics committee of Smt NHL Municipal Medical College, where the M.P serves on the Faculty. The college
50 is affiliated to the Sardar Vallabhbhai Patel Institute of Medical Sciences and Research (SVPIMSR) where
51 patients are admitted and treated. During the duration of the study, the hospital was a designated center
52 for treating COVID-19 patients. The protocol was to admit anyone with influenza-like symptoms and
53 conduct the Reverse Transcriptase- Polymerase Chain Reaction (RT-PCR) test. Those with a negative result
54 were discharged while those with a positive result were kept hospitalized until 10 days past the onset of
55 symptoms or until the resolution of symptoms.

56 A total of 100 subjects were enrolled in the study, 80 positive and 20 negative for SARS CoV-2 by RT-PCR.
57 All subjects were above the age of 18. Those who had tested positive were at least 10 days past the onset
58 of symptoms at the time of enrollment. Those who were negative by RT-PCR were mostly between day 3
59 to 9 from the onset of symptoms (14/20); 4 were between 1 to 2 days and 2 were between 16 to 17 days
60 from the onset of symptoms. Individuals who were critically ill or had a history of immunosuppression or
61 were participating in any other clinical trial were excluded.

62

63 Study design

64 Informed consent was taken from eligible individuals in writing. Basic demographic information, medical
65 history and RT-PCR results were recorded. Then the lateral flow antibody test was performed by lancing
66 the index finger and applying two drops of blood in the sample window of the test cassette, followed by
67 two drops of buffer, as per the manufacturer's instructions. Results were read between 15 and 20 minutes
68 after the application of blood. If individuals had a negative RT-PCR result but were positive by the lateral
69 flow assay, venous samples were taken and frozen. These samples were then processed using an Enzyme-
70 linked immunosorbent assay (ELISA) kit for total antibodies (COVIDscreen Plus) from Trivitron Healthcare
71 Pvt. Ltd. A schematic view of participant flow is shown in Figure 1.



72

73 **Figure 1:** Participant flow diagram

74 Data Analysis

75 A comparison of the results of the lateral flow assay and RT-PCR results was undertaken. The calculation

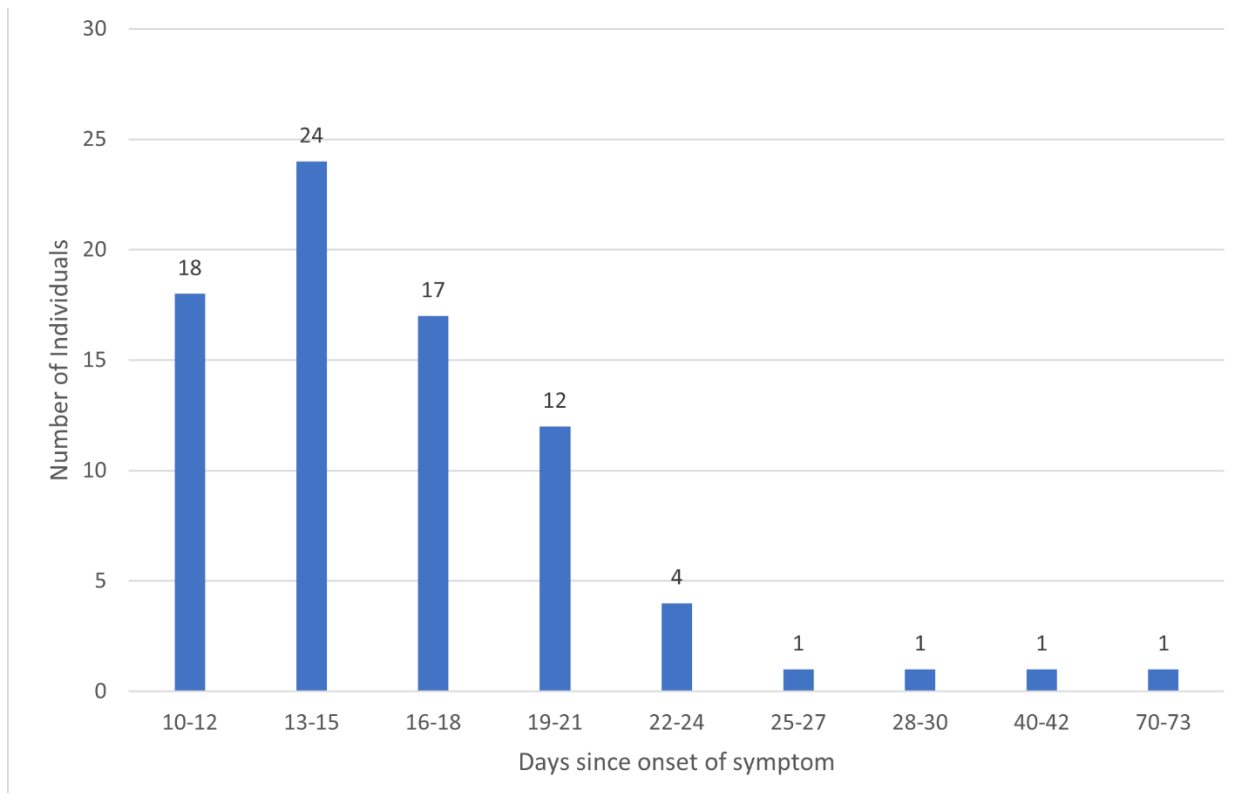
76 of sensitivity and specificity were done as per the following formulae:

77 Sensitivity: $TP/(TP+FN)$ where TP = True Positive; FN = False Negative

78 Specificity: $TN/(TN+FP)$ where TN = True Negative; FP = False Positive

79 **Results:**

80 Individuals enrolled in the study were spread out between 10 to 73 days from onset of symptoms (Figure
81 2). The median was 15 days. Among patients who tested positive by RT-PCR, fever, breathlessness, and
82 cough were the top 3 reported symptoms with an occurrence of 86%, 48% and 47% respectively. Similarly,
83 hypertension and diabetes were the most reported medical history by the patients with an occurrence of
84 46% and 30% respectively.



85

86 **Figure 2:** Distribution of samples by days from onset of symptoms

87 **Assay sensitivity**

88 Of the 80 RT-PCR positive individuals, complete data were available for 79 individuals. 68/79 individuals
89 were positive for either IgG or IgM antibodies by the Immunoscience lateral flow assay (Table 1). The
90 sensitivity was calculated to be 86.1%, with a 95% confidence interval (CI) of (76.4% to 92.8%).

91 **Table 1: Sensitivity of assay**

Type of result	Number of individuals
True positive	68
False negative	11
Total	79
Sensitivity	86.1% (95% CI: 76.4% to 92.8%)

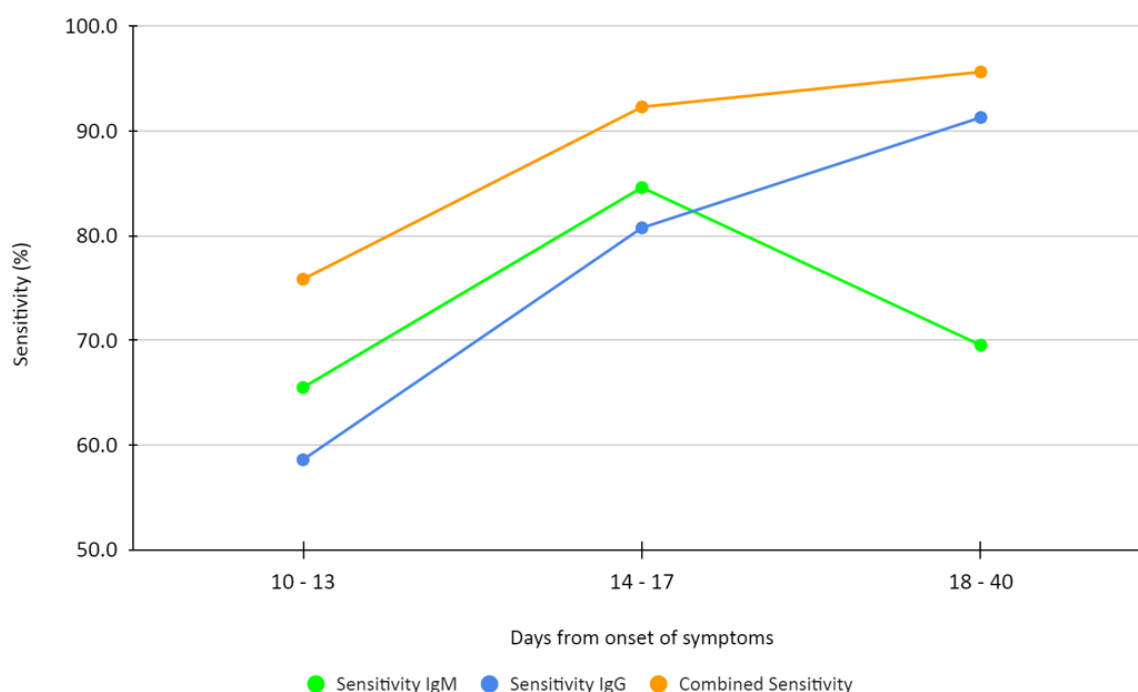
92
93 An analysis of sensitivity based on the number of days from onset of symptoms showed time dependent
94 changes. When considering IgM positivity alone, sensitivity improved from 65.5% to 84.6% and dropped
95 to 69.6% for samples taken at 10-13 days, 14-17 days, and 18-40 days respectively from the onset of
96 symptoms. This trend is consistent with reported data on the rise and fall of IgM levels in patients,
97 following a COVID-19 infection (7). When considering IgG positivity alone, sensitivity improved from 50.6%
98 to 80.8% to 91.3% for samples taken at 10-13 days, 14-17 days, and 18-40 days respectively from the
99 onset of symptoms. Finally, when considering overall sensitivity (IgM or IgG positivity), sensitivity
100 improved from 75.9% to 82.3% to 95.7% for samples taken from patients at 10-13 days, 14-17 days, and
101 18-40 days respectively from the onset of symptoms (Figure 3). (A single data point from a patient at day
102 73 and negative for IgM and IgG antibodies was excluded). These data suggest that the sensitivity of the
103 assay depends on the number of days from onset of symptoms. Highest sensitivity is achieved 17 days
104 after the onset of symptoms.

105 In this study, we noted 11 false negative results. 9 out of 11 samples were taken between 10 and 15 days
106 from the onset of symptoms, one at 19 and one at 73 days. It is possible that the antibody titer in these
107 individuals was below the limit of detection of the lateral flow assay.

108 **Table 2: Changes in assay sensitivity vis-à-vis days from onset of symptoms**

Days from onset of symptoms	Number of samples	Number positive for IgM	Sensitivity (IgM alone)	Number positive for IgG	Sensitivity (IgG alone)	Number positive IgM or IgG	Overall sensitivity (IgM or IgG)
10-13	29	19	65.5%	17	58.6%	22	75.9%
14-17	26	22	84.6%	21	80.8%	24	82.3%
18-40	23	16	69.6%	21	91.3%	22	95.7%

109



110

111 **Figure 3: Test sensitivity with respect to days from onset of symptoms**

112 **Timeline of IgM and IgG responses**

113 In this study, individuals were tested only once. Thus, a time course of antibody responses could not be
114 derived. However, we analyzed the relationship between the number of days from the onset of symptoms
115 and the type of antibody positivity (Table 3). The number of RT-PCR positive samples that were positive
116 for IgM alone was 9, positive for IgG alone were 11 and positive for IgM and IgG were 48. The median

117 time to IgM (alone) positivity was 12 days, IgM and IgG positivity was 16 days and to IgG positivity was 18
118 days, with overlapping ranges for the three types of immune profiles. Most individuals were positive for
119 IgM and IgG antibodies, which is consistent with the time course of antibody responses reported in the
120 literature (7).

121 **Table 3: IgM, IgG positivity vis-à-vis days from onset of symptoms**

	IgM alone positive	IgG alone positive	IgM and IgG positive
Number of samples	9	11	48
Median days since onset of symptoms	12	18	16
Range	11 - 40	11 - 23	10 - 30

122

123 **Assay specificity**

124 Of the 20 samples that were negative by RT-PCR, only 12 were negative by the lateral flow assay as well
125 (Table 4). 8 samples, taken between days 1 to 9 from onset of symptoms, showed distinct IgM positive
126 signals (Figure 4). As per the study protocol, venous blood from these individuals was analyzed by ELISA.
127 All 8 were positive for antibodies (data not shown), taking the specificity to 100%, with a 95% confidence
128 interval of 73.5% to 100%.

129 **Table 4: Specificity of the assay**

Type of result	Number of samples
True negative	12
Positive by Lateral flow assay and ELISA	8
Total	20
Specificity	100% (95% CI: 73.5% to 100%)



130

131 **Figure 4** Images of 2 cassettes that were positive by the lateral flow assay and negative by RT-PCR.

132 (C = Control, G = IgG, M= IgM)

133

134 **Discussion**

135 The COVID-19 pandemic has brought into focus the need for simple test methodologies to track the
136 immunity of individuals and communities. Antibody tests play an important role in this regard and are
137 particularly valuable when available as POC tests.

138 In this study we evaluated ImmunoScience's lateral flow immunochromatography assay for the detection
139 of IgM and IgG antibodies specific to SARS CoV-2. We found the specificity to be 100% (95% CI: 73.5% to
140 100%), while the sensitivity was 86.1% (95% CI: 76.4% to 92.8%). Peak sensitivity of 95.7% was achieved
141 after day 17. These results suggest that the test adequately serves the purpose of identifying those who
142 have been exposed to the virus.

143 Amongst the RT-PCR positive samples correctly identified by the lateral flow assay, we found that the
144 majority of the samples were positive for IgM and IgG consistent with the timing of study and the time
145 course of antibody responses reported by others (7). We noted that there were 11 RT-PCR positive
146 samples that were negative by the lateral flow assay. As the study did not involve any independent
147 assessment of these samples by ELISA, it is assumed that these are false negative results. However, several
148 recent reports have raised the possibility of T-cell mediated immunity (8). In future studies, such
149 discrepancies must be addressed using alternate methods.

150 An analysis of results for the RT-PCR negative individuals revealed that 8 had antibodies to SARS CoV-2.
151 While the reasons for the negative RT-PCR results cannot be pinpointed, we speculate that the timing of
152 the test or suboptimal sample collection may have resulted in a false negative (9, 10). These results
153 suggest that employing a multiplicity of tests may be appropriate when diagnosing symptomatic
154 individuals.

155 The size of this study was small, n=99, with a 4:1 ratio of RT-PCR positive and negative individuals. The
156 small size allowed the study to be completed in a short period of time and the higher number of RT-PCR
157 positive individuals made it possible to probe the sensitivity of the assay in fuller detail. However, only a
158 limited evaluation of specificity was possible with this study design. At the time of initiating the study, this
159 was an acceptable trade-off as the manufacturer had claimed a specificity of 96% (oral communication)
160 and the need to verify sensitivity was more urgent. Unexpectedly, the number of true negative individuals
161 dropped from 20 to 12, greatly limiting the assessment of specificity. Future studies should include a larger
162 number of true negative samples, characterized by RT-PCR and an ELISA or Chemiluminescence
163 Immunoassay (CLIA) prior to enrollment in the study.

164 Overall, the data from this study support the use of the ImmunoQuick rapid test for serosurveillance.

165

166 **References**

- 167 1. FIND. SARS-CoV-2 diagnostic pipeline, Published 2020. [https://www.finddx.org/covid-](https://www.finddx.org/covid-19/pipeline/Google Scholar)
168 [19/pipeline/Google Scholar](https://www.finddx.org/covid-19/pipeline/Google Scholar)
- 169 2. Pickering, S., Betancor, G., Pedro Galao, R., Merrick, B., Signell, A. W., Wilson, H. D. et al.
170 Comparative assessment of multiple COVID-19 serological technologies supports continued
171 evaluation of point-of-care lateral flow assays in hospital and community healthcare settings.
172 2020 doi: 10.1101/2020.06.02.20120345
- 173 3. Lassaunière, R., Frische, A., Harboe, Z. B., Nielsen, A. C., Fomsgaard, A., Krogfelt, K. A. et al. 2020
174 Evaluation of nine commercial SARS-CoV-2 immunoassays. doi: 10.1101/2020.04.09.20056325
- 175 4. Whitman, J. D., Hiatt, J., Mowery, C. T., Shy, B. R., Yu, R., Yamamoto, T. N. et al. 2020 Test
176 performance evaluation of SARS-CoV-2 serological assays. doi: 10.1101/2020.04.25.20074856
- 177 5. Adams ER, Ainsworth M, Anand R, Andersson MI, Auckland K, Baillie JK, et al. Antibody testing for
178 COVID-19: A report from the National COVID Scientific Advisory Panel. Wellcome Open Res. 2020
179 Jun 11; 5:139 doi: 10.12688/wellcomeopenres.15927.1
- 180 6. https://www.icmr.gov.in/pdf/covid/kits/archive/Antibody_based_tests_14052020.pdf
- 181 7. Hou H, Wang T, Zhang B, Luo Y, Mao L, Wang F, et al. Detection of IgM and IgG antibodies in
182 patients with coronavirus disease 2019. Clin Transl Immunol. 2020 May; 9(5):e1136 doi:
183 10.1002/cti2.1136
- 184 8. Sekine T, Perez-Potti A, Rivera-Ballesteros O, Strålin K, Gorin J, Olsson A, et al. Robust T Cell
185 Immunity in Convalescent Individuals with Asymptomatic or Mild COVID-19. Cell. 2020 Oct;183(1):
186 13-15 doi: 10.1016/j.cell.2020.08.017

- 187 9. Tang Y, Schmitz JE, Persing DH, Stratton CW. Laboratory Diagnosis of COVID-19: Current Issues
188 and Challenges. J Clin Microbiol. 2020 May 58 (6): e00512-20 doi: 10.1128/jcm.00512-20
- 189 10. Afzal A. Molecular diagnostic technologies for COVID-19: Limitations and challenges. Journal of
190 Advanced Research. 2020 Aug. doi: 10.1016/j.jare.2020.08.002

191 **Acknowledgements**

192 We thank Dr. N. Madhusudhana Rao from the Center for Cellular and Molecular Biology for helping us
193 with the ELISA tests on the venous samples.

194 **Conflict of interest**

195 The authors declare no conflict of interest.

196 **Funding**

197 This research did not receive any specific grant from funding agencies in the public, commercial, or not-
198 for-profit sectors.