

1 **Increased Burden of Familial-associated Early-onset Cancer Risk among Latino**
2 **Americans Compared to non-Latino Whites.**

3

4 Qianxi Feng, MPH ¹, Eric Nickels, MD ^{1,2}, Ivo S. Muskens, MD ¹, Adam J. de Smith, PhD ¹, W.
5 James Gauderman, PhD ¹, Amy C. Yee, MPH ¹, Charite Ricker, MS, CGC ³, Thomas Mack, MD
6 ¹, Andrew D. Leavitt, MD ⁴, Lucy A. Godley, MD, PhD ⁵, Joseph L. Wiemels, PhD ¹

7

8 Affiliations of authors:

9 ¹ Department of Preventive Medicine, USC Keck School of Medicine, Los Angeles, CA

10 ² Children's Hospital Los Angeles, Los Angeles, CA

11 ³ Norris Comprehensive Cancer Center, USC Keck School of Medicine, Los Angeles, CA

12 ⁴ Departments of Medicine and Laboratory Medicine, University of California, San Francisco,

13 San Francisco, CA

14 ⁵ Departments of Medicine and Human Genetics, The University of Chicago, Chicago, IL

15

16 Correspondence to:

17 Joseph L. Wiemels

18 Professor, Department of Preventive Medicine

19 Center for Genetic Epidemiology

20 1450 Biggy Street, NRT-1506

21 Los Angeles, CA 90089

22 (323) 442-7865

23 wiemels@usc.edu

24

25

26

27 **Abstract**

28 The role of race/ethnicity in genetic predisposition of early-onset cancers can be estimated by
29 comparing family-based cancer concordance rates among ethnic groups. We used linked
30 California health registries to evaluate the relative cancer risks for first degree relatives of
31 patients diagnosed between ages 0-26, and the relative risks of developing distinct second
32 malignancies (SPMs). From 1989-2015, we identified 29,631 cancer patients and 62,863
33 healthy family members. Given probands with cancer, there were increased relative risks of any
34 cancer for siblings and mothers [standardized incidence ratio (SIR)=3.32;95% confidence
35 interval (CI):2.54-4.35; $P<0.001$]and of SPMs (SIR=7.12;95%CI:5.46-9.28; $P<0.001$). Higher
36 relative risk of any cancer in siblings and mothers ($P=0.001$) was observed for Latinos
37 (SIR=3.36;95%CI:2.24-5.05) compared to non-Latino White subjects (SIR=2.60;95%CI:1.66-
38 4.06). Latinos had higher relative risks in first degree relatives and higher SPM risk compared to
39 non-Latino Whites for most cancers, supporting a need for increased attention to the genetics of
40 early-onset cancer predisposition in Latinos.

41 (150 words)

42

43 **Keywords:** Early-onset cancer; Familial risk; Linked cancer registry; Race/ethnicity; Latino
44 Americans; Hispanic paradox.

45

46 **Key Messages**

- 47 • We identified 29 631 cancer patients and their 62 863 healthy family members in
48 California from 1989 to 2015.
- 49 • The risk of early-onset cancer in siblings and mothers was elevated by having a proband
50 with cancer in the same family.
- 51 • The majority of early-onset cancers exhibited higher relative risks in siblings and
52 mothers and second primary malignancies for Latinos when compared to non-Latino
53 Whites.

54

55

56

57 Introduction

58 Both genetic and environmental factors play a role in the causes of early-onset cancer. Several
59 well-defined genetic syndromes contribute to early-onset cancer risk, along with a wider array of
60 common alleles that influence risk marginally and detected at the population level. As an
61 example of the former, Li-Fraumeni syndrome caused by mutations in the tumor suppressor
62 gene *TP53*, is associated with an increased risk of a spectrum of cancers diagnosed at early
63 ages¹. An example of low penetrance common genetic variations associated with cancer risk
64 include *IKZF1* and *ARID5B* genes in pediatric acute lymphoblastic leukemia (ALL)². Both of
65 these classes of variants may vary in frequency by race/ethnic group and cluster by families³⁻⁵,
66 where familial germline deletion of *ETV6* was reported for ALL⁶. Examination of cancer
67 predisposition requires investigation in ethnic strata particularly where cancer incidence rates
68 are known to differ as it does for many pediatric cancer types, such as leukemia⁷ and brain
69 cancer⁸.

70
71 In addition to primary cancers, incidence patterns of second independent malignancies may
72 also provide a perspective of underlying genetic predisposition. Among childhood cancer
73 survivors, more second primary malignancy cases are observed among non-Latino Whites
74 (NLW) than Latino subjects⁹. This is also reflected in adult cancers, where Latino breast cancer
75 survivors had lower risk of second cancers than NLW and NL Black women¹⁰.

76
77 Germline pathogenic/likely pathogenic variants in cancer predisposition genes are found in
78 approximately 10% of pediatric cancer patients^{1,11-13}, and may be inherited or arise *de novo*.
79 Highly penetrant inherited variants will contribute to clustering of cancer cases within the family.
80 Shared environments within the family unit may also be considered alongside genetic risk as
81 potential causes for family-based cancer concordance.

82

83 Familial concordance of a wide variety of cancers has been assessed using the Swedish
84 Family-Cancer Database, leading to a deep understanding of familial relative risks¹⁴⁻¹⁶. The
85 Victorian Paediatric Cancer Family Study in Australia also explored the cancer risks for relatives
86 of children with cancer in a small population¹⁷. In the US, the Utah Population database may be
87 the best-known population for studying familial risk¹⁸⁻²². Importantly, these studies largely
88 comprise families of European ancestry, and therefore have not examined potential ethnic-
89 specific familial risks. Here, we utilized linked population registries with over 64,000 individuals
90 to quantify the familial risks (siblings and mothers) and the risks of early-onset second primary
91 malignancies in the highly diverse and large population of California.

92

93

94

95 **Methods**

96 ***Source of Data***

97 We used linked population-based registries in California to evaluate the relative risks of early-
98 onset cancers (0-26 years age of onset) for siblings and mothers of children, adolescents, and
99 young adults (AYA) aged 0-26 diagnosed with cancer, as well as the relative risks of early-onset
100 second primary malignancies (SPMs) among the proband patients. The dataset was created by
101 linking information from the California Cancer Registry (CCR) and California Birth Statistical
102 Master File, allowing the capture of siblings and parents of cancer probands, along with their
103 cancer incidence. The linked dataset comprehensively encompassed all cancer cases 0-26
104 years old, as well as their sibling and mother cancers, diagnosed from 1989 to 2015 in
105 California. Our upper age limit of 26 was set based on the available age range covered by this
106 relatively young cohort. Overall, the dataset included a total of 121 571 individuals. The
107 information on healthy siblings and mothers was available during the whole study period,
108 whereas the information on fathers was not available until 2004 in the birth files and therefore is
109 not included in the current analysis.

110
111 For the analysis of cancer familial risks, we included all primary incident cancer cases
112 diagnosed from 1989 to 2015 among patients aged 0-26 years, with patient age-at-diagnosis
113 limited by the study time period for which California maintained a statewide SEER gold-standard
114 cancer registry. In addition, we performed a subgroup analysis on pediatric cancers including
115 patients aged 0-15 years diagnosed within the same study period. For the analysis of secondary
116 cancer risks, we included all SPMs diagnosed over the same years and patient age ranges.
117 Although the CCR only records primary malignancies, some misclassification of relapsed or
118 recurrent disease is possible. A physician (E.N.) reviewed diagnosis codes of all the cases
119 diagnosed after the first primary case to prevent the misclassification of relapsed first primary
120 malignancies (FPMs) as SPMs. For both analyses, we classified the cancers into twelve-broad

121 groups and subgroups as defined by the International Classification of Childhood Cancer, Third
122 edition (ICCC-3, November 2012) (<https://seer.cancer.gov/iccc/iccc3.html>). The abbreviations
123 for cancer types are included in **Table 1**. We also grouped the cancers into hematologic or solid
124 categories in the analyses. Hematologic cancers were defined as leukemias and lymphomas.
125 Solid cancers were defined as CNS tumors, neuroblastomas, retinoblastomas, renal tumors,
126 hepatic tumors, bone tumors, sarcomas, germ cell tumors, epithelial neoplasms and other and
127 unspecified malignant neoplasms.

128

129 **Statistical Analysis**

130 We quantified the relative risks for siblings and mothers, and the relative risks of SPMs by
131 calculating the standardized incident ratios (SIRs) of a given cancer or of SPMs among the
132 healthy siblings, and the SIRs of a given cancer among healthy mothers of probands using a
133 previous published method¹⁴. We defined a proband as a pediatric or AYA patient with a given
134 cancer. Only one child/AYA in each family can be a proband, so that in families with two or more
135 cases, the proband is defined as the patient with the earliest date of diagnosis. Given a proband
136 with cancer, we calculated the SIRs for a sibling or a mother in the same family for all types of
137 cancers. Separately, we calculated the SIRs for a sibling for the same type of cancer as the
138 proband. We also stratified the analyses by self-identified race/ethnicity of the mother in each
139 family. The SIRs in siblings, mothers or of SPMs can be denoted as:

$$140 \quad SIR = \frac{O}{E} = \frac{\sum_{i=1}^N \sum_{j=1}^{n_i} D_{ij}}{\sum_{i=1}^N \sum_{j=1}^{n_i} \sum_{k=1}^{Kmax} \lambda_k t_{ijk}}$$

141 Where N is the number of families, n_i is the number of non-proband individuals of interest
142 (siblings/SPMs/mothers) in family i , and $Kmax$ is the total number of age intervals. The data for
143 each individual includes a disease indicator (D_{ij}) and the number of years “at risk” during the k^{th}
144 age interval (t_{ijk}). A given individual is defined to be at risk beginning at their age when the
145 proband in their family is diagnosed and ending either when they become affected themselves

146 or they are censored due to end of study follow-up. For siblings and mothers, age was stratified
147 into seven groups as 0, 0-4, 5-9, 10-14, 15-19, 20-24 and 25-29 years. For the calculation of
148 SIRs within a given race group, λ_k is the race-, sex- and age-specific incidence rate of a given
149 cancer. We compared the SIRs across race/ethnic groups with approximate Chi-squared tests.
150 The approximate chi-square method compares the probability of occurrence of events in one
151 group to another, based on a binomial distribution. This comparison is not related to the 95%
152 confidence intervals for the SIRs which are based on a Poisson distribution and may overlap
153 between two groups that are significantly different by approximate chi-square comparison. We
154 designated that all events occurred right at the middle point of each calendar year. We also
155 stratified the analysis by 5-year age groups. The 95% confidence intervals (CIs) and p-values
156 were calculated assuming a Poisson distribution. Statistical analyses were performed using R
157 software (v 3.6.0). Any two-sided p-value less than 0.05 was considered statistically significant.
158 A supplement is included with this manuscript with more information on the statistical tests and
159 computational codes used. Please access this supplement "Statistics and coding supplement:
160 Familial_risk_CCR_eLife" for more information.

161 **Results**

163 ***Demographics of the study population***

164 From 1989 to 2015, we identified a total of 29 249 pediatric and AYA patients with a primary
165 malignancy, comprising 29 072 probands, 112 affected siblings (from 110 families) and 65
166 affected mothers. All siblings were diagnosed after the proband's diagnosis as defined, and 56
167 (86.15%) of the 65 mothers were diagnosed after the proband's diagnosis. We also identified
168 387 SPMs among all pediatric and AYA probands (**Table 2**).

169

170 ***Familial relative risks of early-onset cancers***

171 Overall, we found a 3.32-fold (95%CI:2.54-4.35) increased relative risk of any cancer among
172 siblings and mothers who have a proband with cancer in the same family. Briefly, we found a
173 2.97-fold (95%CI:1.96-4.50) increased relative risk of any cancer given a proband with
174 hematologic cancers and a 4.54-fold (95%CI:3.19-6.45) increased relative risk of any cancer
175 given a proband with solid cancers. When stratified by cancer types, with the exception of
176 neuroblastomas, hepatic tumors, bone tumors, and malignant neoplasms, proband cancers
177 siblings and mothers were found to have increased SIRs for any cancer (**Figure 1A**).

178

179 For the relative risk of specific cancer types, we found a 2.68-fold (95%CI:1.35-5.32) increased
180 risk of hematologic cancers among siblings and mothers of a proband with hematologic cancer,
181 and a 6.78-fold (95%CI:4.18-10.98) increased relative risk of solid cancers among siblings and
182 mothers of a proband with solid cancer. Furthermore, CNS tumors and epithelial neoplasms
183 exhibited statistically significantly increased relative risk for the same type of cancer as the
184 proband [CNS, SIR=6.19; 95%CI:1.42-26.93; epithelial neoplasms, SIR=40.68; 95%CI: 3.17-
185 521.78] (**Supplementary Table 1**). We also observed increased relative risks for sarcomas
186 (SIR=7.36;95%CI:1.12-48.23) and epithelial neoplasms (SIR=5.37;95%CI:1.52-18.92) given a
187 proband with leukemia, for epithelial neoplasms given a proband with CNS tumors
188 (SIR=6.37;95%CI:1.33-30.41), and for leukemias given a proband with sarcomas
189 (SIR=7.01;95%CI:1.12-43.92) (**Figure 2 & Supplementary Table 1**).

190

191 When stratified by more finely defined cancer subtypes, increased relative risks of any cancer
192 for siblings and mothers were observed given a proband with lymphoid leukemia, acute myeloid
193 leukemia, astrocytoma, certain gliomas, certain specified intracranial and intraspinal neoplasms,
194 nephroblastoma and other nonepithelial renal tumors, rhabdomyosarcomas, certain specified
195 soft tissue sarcomas, malignant gonadal germ cell tumors and certain unspecified carcinomas
196 (**Supplementary Table 4**).

197

198 When stratified by race/ethnicity, the relative risk of any cancer for siblings and mothers given a
199 proband with cancer was significantly higher among Latino subjects than non-Latino White
200 (NLW) subjects [Latino: SIR=3.36;95%CI:2.24-5.05; NLW: SIR=2.60;95%CI:1.66-4.06;
201 $P=0.001$]. Non-Latino Asians/Pacific Islanders (API) and Blacks also had higher SIRs than non-
202 Latino Whites (SIR=4.58 and 9.96, respectively, Supplementary Table 2), but small numbers
203 resulted in unstable estimates. Latino subjects also exhibited higher relative risks of any cancer
204 than NLW subjects for solid cancers [Latino: SIR=4.98;95%CI:2.86-8.68; NLW:
205 SIR=3.02;95%CI:1.72-5.28; $P=0.001$], while NLW subjects exhibited higher relative risks than
206 Latino subjects for hematologic cancers [Latino: SIR=2.48;95%CI:1.37-4.50; NLW:
207 SIR=2.69;95%CI:1.29-5.62; $P=0.016$] (**Figure 1B & Supplementary Table 2**). For the relative
208 risk of specific cancers given a proband with the same cancer, Latino subjects showed higher
209 relative risk of solid cancers than NLW subjects [Latino: SIR=7.94;95%CI:3.64-17.34; NLW:
210 SIR=4.41;95%CI:2.10-9.23; $P=0.005$] (**Supplementary Table 3**).

211

212 In the subgroup analysis of pediatric patients aged 0-15 years, we observed a similar trend
213 where the relative risk of any cancer for siblings and mothers was significantly higher among
214 Latino subjects than NLW subjects [Latino: SIR=1.51;95%CI:1.00-2.26; NLW:
215 SIR=0.93;95%CI:0.60-1.46; $P=0.003$] (**Supplementary Table 5**).

216

217 ***Relative risks of second primary malignancies***

218 Overall, we found a 7.12-fold increased risk of SPMs relative to the general population among
219 children/AYAs with an FPM (SIR=7.12;95%CI:5.46-9.28). Most primary cancer types were
220 associated with an elevated relative risk of SPMs (**Figure 3A**). When stratified by race/ethnicity,
221 slightly higher relative risk of all SPMs given a proband with cancer was observed among Latino

222 subjects than NLW subjects [Latino: SIR=6.85;95%CI:4.56-10.30; NLW: SIR=6.67;95%CI:4.26-
223 10.43; $P=0.001$] (**Figure 3B**).

224

225 For the relative risks of SPMs of the same cancer types as the FPM, we found elevated risks for
226 both hematologic and solid cancers. When stratified by race/ethnicity, higher relative risk of
227 hematologic cancers was observed among NLW subjects compared to Latino subjects given a
228 proband with hematologic cancers [Latino: SIR=4.23;95%CI:1.68-10.68; NLW:
229 SIR=6.61;95%CI:1.80-24.29; $P=0.012$] (**Supplementary Table 6**).

230

231 **Discussion**

232 To our knowledge, this is the first study to quantify the familial clustering risks and risks of SPMs
233 among early-onset cancer patients with an emphasis on racial/ethnic differences. Using linked
234 population registry data in the California population, we found that the risk for a sibling
235 child/AYA or mother to have early-onset cancer was elevated once a proband was identified
236 with an early-onset cancer. Likewise, the relative risks for SPMs were elevated among
237 children/AYAs who contracted a first primary cancer. The findings were consistent across
238 race/ethnic groups; however, the magnitude was different. Latinos had higher sibling/maternal
239 relative risks as well as risks for SPMs compared to NLWs for most cancers.

240

241 Consistent with our results, a rich literature with a primary focus on European ancestry
242 populations has reported excessive familial risks of hematologic malignancies¹⁴, lymphomas²³⁻
243 ²⁵, brain tumors^{26,27}, neuroblastomas²⁸, retinoblastomas^{25,28}, germ cell tumors²⁹, sarcomas³⁰ and
244 melanomas³¹. In terms of secondary cancers, studies have reported excessive risks of second
245 primary malignancies among survivors of hereditary retinoblastoma³², chronic myeloid
246 leukemia³³, chronic lymphocytic leukemia³⁴, Hodgkin's lymphoma³⁵, non-Hodgkin's
247 lymphoma³⁶, and neuroblastoma³⁷. The excessive familial risks of certain cancers are highly
248 likely to be associated with genetic predisposition. The archetypic examples are germline loss-
249 of-function mutations in *RB1*, which are found in ~40% of retinoblastoma cases²⁸, and adrenal
250 cortical cancer, with germline *TP53* mutations accounting for most familial cases²⁸. Low
251 penetrance common genetic variations, for instance in *CEBPE*, *IKZF1*, and *ARID5B* genes in
252 ALL, are associated with cancer risk and may also contribute to familial concordance as
253 combinations of low frequency alleles or “polygenic risk scores” have been shown to be as
254 impactful as single strong predisposition mutations in adult cancers^{38,39}; however, their
255 contribution to cancer clustering among children and their families has not yet been studied.

256

257 Our data demonstrate a higher degree of familial-based clustering among Latinos compared to
258 non-Latino Whites. This familial concordance is likely due to both shared genetic and
259 environmental causes and is accompanied by a clearly higher incidence of some cancer types.
260 Latinos are an admixed population, comprising an ancestral mixture from Native American,
261 European, and African sources. California Latinos, particularly the youth population are largely
262 from Mexico, and harbor a higher risk of certain cancers particularly pediatric leukemias, the
263 most common cancer in children⁴⁰; however this higher risk is partially accounted for by a higher
264 frequency of common risk alleles which do not address strong familial predisposition loci⁴. This
265 higher risk identified in relation to the family unit has not been studied, and our results here beg
266 for an analysis of comparative sources of genetic and environmental risk that contribute to the
267 higher risk and familial clustering of cancers in Latinos.

268

269 Therapy of the first primary cancer is a major factor in the induction of secondary independent
270 malignancies⁴¹⁻⁴³. The purpose of radiation and chemo-therapies of cancer patients is to
271 improve survivorship. In the current analysis, better survivorship of hematologic cancers for non-
272 Latino Whites compared to Latinos may however contribute to the excessive risk of second
273 primary malignancies among White subjects⁴⁴, as some Latino subjects with hematologic
274 cancers may not have survived long enough to develop a secondary cancer. Nevertheless,
275 multiple primary cancer diagnoses are considered a key feature of hereditary cancer
276 predisposition syndromes⁴⁵. As such secondary cancers are rare, genetics are still likely to play
277 a strong role⁴⁶, and our overall SPM results here emphasize a similar ethnic-specific patterning
278 as cancer clustering in first primary malignancies. Of note, our analysis was not designed to
279 distinguish relative risk contributions from therapy and genetic sources for secondary cancers.

280

281 For some tumor types the germline predisposition was readily noted in this cohort, for example
282 ten of the fourteen affected relatives who had a proband with retinoblastoma were diagnosed

283 with the same cancer, an unsurprising finding given that germline *RB1* mutations account for a
284 significant proportion of retinoblastoma are highly penetrant and those tumors tend to be
285 diagnosed young. We also observed increased relative risks for sarcomas given a proband with
286 leukemias, suggesting the presence of families with Li-Fraumeni syndrome, which is
287 characterized by a spectrum of childhood and adult-onset cancers including adrenocortical
288 carcinoma, breast cancer, CNS tumors, sarcomas, and leukemia⁴⁵.

289
290 Population-level selection pressures are thought to influence the relative frequencies of alleles.
291 For instance, genetic adaptations that shaped the Native American genome to cold and warm
292 environments⁴⁷, and immune response following colonization by Europeans⁴⁸. Our result
293 suggests that some adaptive selection pressures, or simply genetic drift exacerbated by
294 bottlenecking of genetic diversity during the Native American population history may
295 differentially influence familial cancer clustering by age of cancer onset⁴⁹. If replicated in other
296 study settings, this contrast between genetic risk child and adult onset cancers by ethnicity
297 should be studied further for a fuller understanding of familial risks.

298
299 Our analyses capitalized on the highly diverse population in California, allowing us to quantify
300 the relative risks across different ethnic groups. Moreover, the utilization of linked population-
301 based registries in California enabled us to minimize the selection and information biases
302 introduced by a case-control study design or other strategies that only sample portions of the
303 population. Furthermore, although Latinos usually have more people per household than
304 NLWs⁵⁰, detection bias of cancers among siblings and mothers is less likely, which is reflected
305 by the excessive relative risk of lymphomas among NLW compared to Latino subjects in the
306 current analysis in agreement with previous reports^{51,52}. There are also some limitations of our
307 study. Despite the large number of total cancer cases, the number of affected siblings and
308 second primaries are very small for some cancer types, thus limiting the power to detect

309 significant relative risks. Also, we are unable to track cancer incidence for affected siblings,
310 maternal cancers, and SPMs that may have been diagnosed outside of California. In addition,
311 the follow-up time of 26 years is not enough for a comprehensive detection of SPMs in the
312 probands, nor for cancers arising in proband mothers at older ages. These insufficient follow-up
313 time and loss-to follow-up issues have limited our ability to quantify the relative risks among
314 mothers with cancer onset at older ages (>40 yrs). Lastly, the lack of records on fathers reduces
315 our ability to quantify the relative risks among other first-degree relatives and may reduce the
316 appreciation of the potential contribution of high-risk cancer predisposition syndromes which can
317 be inherited from either parent.

318

319 Accepting those limitations with the current dataset, our study has several important implications
320 that may open windows to future research. First, the genetic predispositions driving the
321 excessive childhood cancer risks among the Latino population, whether from higher frequencies
322 of known cancer predisposition syndromes or mutations in novel genes, or a higher burden of
323 common or rare genetic risk alleles, warrants further investigation. Second, the comparative
324 attributable fraction of familial risk based on environmental risk factors interacting with genetic
325 predispositions warrants further investigation. Lastly, descriptive studies on familial and
326 secondary cancer risks among race/ethnic groups other than Latinos and non-Latino Whites
327 may provide additional insights into cancer incidence variation by race/ethnicity.

328

329 (2939 words)

330 **Funding**

331 This work was supported by the V Foundation for funding this work (Grant FP067172). The
332 collection of cancer incidence data used in this study was supported by the California
333 Department of Public Health as part of the statewide cancer reporting program mandated by
334 California Health and Safety Code Section 103885; the National Cancer Institute's Surveillance,
335 Epidemiology, and End Results Program under contract HHSN261201000140C awarded to the
336 Cancer Prevention Institute of California, contract HHSN261201000035C awarded to the
337 University of Southern California, and contract HHSN261201000034C awarded to the Public
338 Health Institute; and the Centers for Disease Control and Prevention's National Program of
339 Cancer Registries, under agreement U58DP003862-01 awarded to the California Department of
340 Public Health. The ideas and opinions expressed herein are those of the author(s), and no
341 endorsement by the California Department of Public Health, the National Cancer Institute, or the
342 Centers for Disease Control and Prevention or their contractors and subcontractors is intended
343 or should be inferred.

344

345 **Declaration of interests**

346 None.

347 References

- 348 1. Saletta F, Dalla Pozza L, Byrne JA. Genetic causes of cancer predisposition in children
349 and adolescents. *Transl Pediatr.* 2015;4(2):67-75.
- 350 2. Moriyama T, Relling MV, Yang JJ. Inherited genetic variation in childhood acute
351 lymphoblastic leukemia. *Blood.* 2015;125(26):3988-3995.
- 352 3. Caswell-Jin JL, Gupta T, Hall E, et al. Racial/ethnic differences in multiple-gene
353 sequencing results for hereditary cancer risk. *Genet Med.* 2018;20(2):234-239.
- 354 4. Walsh KM, Chokkalingam AP, Hsu LI, et al. Associations between genome-wide Native
355 American ancestry, known risk alleles and B-cell ALL risk in Hispanic children.
356 *Leukemia.* 2013;27(12):2416-2419.
- 357 5. Ricker C, Culver JO, Lowstuter K, et al. Increased yield of actionable mutations using
358 multi-gene panels to assess hereditary cancer susceptibility in an ethnically diverse
359 clinical cohort. *Cancer Genet.* 2016;209(4):130-137.
- 360 6. Rampersaud E, Ziegler DS, Iacobucci I, et al. Germline deletion of ETV6 in familial acute
361 lymphoblastic leukemia. *Blood Adv.* 2019;3(7):1039-1046.
- 362 7. Feng Q, de Smith AJ, Vergara-Lluri M, et al. Trends in Acute Lymphoblastic Leukemia
363 Incidence in the US from 2000-2016: an Increased Risk in Latinos Across All Age
364 Groups. In. *Am J Epidemiol.* Vol In press2020.
- 365 8. Ostrom QT, Adel Fahmideh M, Cote DJ, et al. Risk factors for childhood and adult
366 primary brain tumors. *Neuro Oncol.* 2019;21(11):1357-1375.
- 367 9. Brown AL, Arroyo VM, Agrusa JE, Scheurer ME, Gramatges MM, Lupo PJ. Survival
368 disparities for second primary malignancies diagnosed among childhood cancer
369 survivors: A population-based assessment. *Cancer.* 2019;125(20):3623-3630.
- 370 10. Calip GS, Law EH, Ko NY. Racial and ethnic differences in risk of second primary
371 cancers among breast cancer survivors. *Breast Cancer Res Treat.* 2015;151(3):687-696.
- 372 11. Zhang J, Walsh MF, Wu G, et al. Germline Mutations in Predisposition Genes in
373 Pediatric Cancer. *N Engl J Med.* 2015;373(24):2336-2346.
- 374 12. Plon SE, Lupo PJ. Genetic Predisposition to Childhood Cancer in the Genomic Era.
375 *Annu Rev Genomics Hum Genet.* 2019;20:241-263.
- 376 13. Ripperger T, Bielack SS, Borkhardt A, et al. Childhood cancer predisposition syndromes-
377 A concise review and recommendations by the Cancer Predisposition Working Group of
378 the Society for Pediatric Oncology and Hematology. *Am J Med Genet A.*
379 2017;173(4):1017-1037.
- 380 14. Sud A, Chattopadhyay S, Thomsen H, et al. Analysis of 153 115 patients with
381 hematological malignancies refines the spectrum of familial risk. *Blood.*
382 2019;134(12):960-969.
- 383 15. Kharazmi E, Fallah M, Sundquist K, Hemminki K. Familial risk of early and late onset
384 cancer: nationwide prospective cohort study. *BMJ.* 2012;345:e8076.
- 385 16. Hemminki K, Czene K. Attributable risks of familial cancer from the Family-Cancer
386 Database. *Cancer Epidemiol Biomarkers Prev.* 2002;11(12):1638-1644.
- 387 17. Heath JA, Smibert E, Algar EM, Dite GS, Hopper JL. Cancer risks for relatives of
388 children with cancer. *J Cancer Epidemiol.* 2014;2014:806076.
- 389 18. Curtin K, Smith KR, Fraser A, Pimentel R, Kohlmann W, Schiffman JD. Familial risk of
390 childhood cancer and tumors in the Li-Fraumeni spectrum in the Utah Population
391 Database: implications for genetic evaluation in pediatric practice. *Int J Cancer.*
392 2013;133(10):2444-2453.
- 393 19. Kohli DR, Smith KR, Wong J, et al. Familial pancreatic cancer risk: a population-based
394 study in Utah. *J Gastroenterol.* 2019;54(12):1106-1112.

- 395 20. Samadder NJ, Curtin K, Wong J, et al. Epidemiology and familial risk of synchronous
396 and metachronous colorectal cancer: a population-based study in Utah. *Clin*
397 *Gastroenterol Hepatol*. 2014;12(12):2078-2084 e2071-2072.
- 398 21. Wang X, Harmon J, Zabrieskie N, et al. Using the Utah Population Database to assess
399 familial risk of primary open angle glaucoma. *Vision Res*. 2010;50(23):2391-2395.
- 400 22. Goldgar DE, Easton DF, Cannon-Albright LA, Skolnick MH. Systematic population-
401 based assessment of cancer risk in first-degree relatives of cancer probands. *J Natl*
402 *Cancer Inst*. 1994;86(21):1600-1608.
- 403 23. Cerhan JR, Slager SL. Familial predisposition and genetic risk factors for lymphoma.
404 *Blood*. 2015;126(20):2265-2273.
- 405 24. Fallah M, Kharazmi E, Pukkala E, et al. Familial risk of non-Hodgkin lymphoma by sex,
406 relationship, age at diagnosis and histology: a joint study from five Nordic countries.
407 *Leukemia*. 2016;30(2):373-378.
- 408 25. Madanat-Harjuoja LM, Pitkaniemi J, Hirvonen E, Malila N, Diller LR. Linking population-
409 based registries to identify familial cancer risk in childhood cancer. *Cancer*.
410 2020;126(13):3076-3083.
- 411 26. Couldwell WT, Cannon-Albright LA. A description of familial clustering of meningiomas in
412 the Utah population. *Neuro Oncol*. 2017;19(12):1683-1687.
- 413 27. Crump C, Sundquist J, Sieh W, Winkleby MA, Sundquist K. Perinatal and familial risk
414 factors for brain tumors in childhood through young adulthood. *Cancer Res*.
415 2015;75(3):576-583.
- 416 28. Kamihara J, Bourdeaut F, Foulkes WD, et al. Retinoblastoma and Neuroblastoma
417 Predisposition and Surveillance. *Clin Cancer Res*. 2017;23(13):e98-e106.
- 418 29. Landero-Huerta DA, Viguera-Villasenor RM, Yokoyama-Rebollar E, et al. Epigenetic
419 and risk factors of testicular germ cell tumors: a brief review. *Front Biosci (Landmark*
420 *Ed)*. 2017;22:1073-1098.
- 421 30. Lynch HT, Deters CA, Hogg D, Lynch JF, Kinarsky Y, Gatalica Z. Familial sarcoma:
422 challenging pedigrees. *Cancer*. 2003;98(9):1947-1957.
- 423 31. Frank C, Sundquist J, Hemminki A, Hemminki K. Risk of other Cancers in Families with
424 Melanoma: Novel Familial Links. *Sci Rep*. 2017;7:42601.
- 425 32. Marees T, Moll AC, Imhof SM, de Boer MR, Ringens PJ, van Leeuwen FE. Risk of
426 second malignancies in survivors of retinoblastoma: more than 40 years of follow-up. *J*
427 *Natl Cancer Inst*. 2008;100(24):1771-1779.
- 428 33. Sasaki K, Kantarjian HM, O'Brien S, et al. Incidence of second malignancies in patients
429 with chronic myeloid leukemia in the era of tyrosine kinase inhibitors. *Int J Hematol*.
430 2019;109(5):545-552.
- 431 34. Molica S. Second neoplasms in chronic lymphocytic leukemia: incidence and
432 pathogenesis with emphasis on the role of different therapies. *Leuk Lymphoma*.
433 2005;46(1):49-54.
- 434 35. Baker H. Second cancer risk for Hodgkin's lymphoma survivors. *Lancet Oncol*.
435 2016;17(2):e50.
- 436 36. Chattopadhyay S, Sud A, Zheng G, et al. Second primary cancers in non-Hodgkin
437 lymphoma: Bidirectional analyses suggesting role for immune dysfunction. *Int J Cancer*.
438 2018;143(10):2449-2457.
- 439 37. Applebaum MA, Henderson TO, Lee SM, Pinto N, Volchenbom SL, Cohn SL. Second
440 malignancies in patients with neuroblastoma: the effects of risk-based therapy. *Pediatr*
441 *Blood Cancer*. 2015;62(1):128-133.
- 442 38. Fantus RJ, Helfand BT. Germline Genetics of Prostate Cancer: Time to Incorporate
443 Genetics into Early Detection Tools. *Clin Chem*. 2019;65(1):74-79.
- 444 39. Yadav S, Couch FJ. Germline Genetic Testing for Breast Cancer Risk: The Past,
445 Present, and Future. *Am Soc Clin Oncol Educ Book*. 2019;39:61-74.

- 446 40. Barrington-Trimis JL, Cockburn M, Metayer C, Gauderman WJ, Wiemels J, McKean-
447 Cowdin R. Trends in childhood leukemia incidence over two decades from 1992 to 2013.
448 *Int J Cancer*. 2017;140(5):1000-1008.
- 449 41. McEnerney ME, Godley LA, Le Beau MM. Therapy-related myeloid neoplasms: when
450 genetics and environment collide. *Nat Rev Cancer*. 2017;17(9):513-527.
- 451 42. Mazonakis M, Kachris S, Damilakis J. Second Cancer Risk from Radiation Therapy for
452 Common Solid Tumors Diagnosed in Reproductive-Aged Females. *Radiat Prot*
453 *Dosimetry*. 2018;182(2):208-214.
- 454 43. Turcotte LM, Liu Q, Yasui Y, et al. Chemotherapy and Risk of Subsequent Malignant
455 Neoplasms in the Childhood Cancer Survivor Study Cohort. *J Clin Oncol*.
456 2019;37(34):3310-3319.
- 457 44. Kirtane K, Lee SJ. Racial and ethnic disparities in hematologic malignancies. *Blood*.
458 2017;130(15):1699-1705.
- 459 45. Valdez JM, Nichols KE, Kesserwan C. Li-Fraumeni syndrome: a paradigm for the
460 understanding of hereditary cancer predisposition. *Br J Haematol*. 2017;176(4):539-552.
- 461 46. Churpek JE, Marquez R, Neistadt B, et al. Inherited mutations in cancer susceptibility
462 genes are common among survivors of breast cancer who develop therapy-related
463 leukemia. *Cancer*. 2016;122(2):304-311.
- 464 47. Reynolds AW, Mata-Miguez J, Miro-Herrans A, et al. Comparing signals of natural
465 selection between three Indigenous North American populations. *Proc Natl Acad Sci U S*
466 *A*. 2019;116(19):9312-9317.
- 467 48. Lindo J, Huerta-Sanchez E, Nakagome S, et al. A time transect of exomes from a Native
468 American population before and after European contact. *Nat Commun*. 2016;7:13175.
- 469 49. O'Fallon BD, Fehren-Schmitz L. Native Americans experienced a strong population
470 bottleneck coincident with European contact. *Proc Natl Acad Sci U S A*.
471 2011;108(51):20444-20448.
- 472 50. bureau USC. Historical Households Tables. [https://www.census.gov/data/tables/time-](https://www.census.gov/data/tables/time-series/demo/families/households.html)
473 [series/demo/families/households.html](https://www.census.gov/data/tables/time-series/demo/families/households.html). Published 2019. Accessed.
- 474 51. Center PR. Latinos in California, Texas, New York, Florida and New Jersey.
475 [https://www.pewresearch.org/hispanic/2004/03/19/latinos-in-california-texas-new-york-](https://www.pewresearch.org/hispanic/2004/03/19/latinos-in-california-texas-new-york-florida-and-new-jersey/)
476 [florida-and-new-jersey/](https://www.pewresearch.org/hispanic/2004/03/19/latinos-in-california-texas-new-york-florida-and-new-jersey/). Published 2004. Accessed.
- 477 52. Adams SV, Newcomb PA, Shustov AR. Racial Patterns of Peripheral T-Cell Lymphoma
478 Incidence and Survival in the United States. *J Clin Oncol*. 2016;34(9):963-971.
479
480

481 **Tables**

482 Table 1. Abbreviations of the twelve broad groups defined by the International Classification of
483 Childhood Cancer, Third edition.

484

Abbreviation	Definition †
Leukemias	I. Leukemias, myeloproliferative diseases, and myelodysplastic diseases
Lymphomas	II. Lymphomas and reticuloendothelial neoplasms
CNS tumors	III. CNS and miscellaneous intracranial and intraspinal neoplasms
Neuroblastomas	IV. Neuroblastoma and other peripheral nervous cell tumors
Retinoblastoma	V. Retinoblastoma
Renal tumors	VI. Renal tumors
Hepatic tumors	VII. Hepatic tumors
Bone tumors	VIII. Malignant bone tumors
Sarcomas	IX. Soft tissue and other extraosseous sarcomas
GCT	X. Germ cell tumors, trophoblastic tumors, and neoplasms of gonads
Epithelial neoplasms	XI. Other malignant epithelial neoplasms and malignant melanomas
Other	XII. Other and unspecified malignant neoplasms

485 † Cancers were classified into groups as defined by the International Classification of Childhood
486 Cancer, Third edition (ICCC-3, November 2012) (<https://seer.cancer.gov/iccc/iccc3.html>).

487

488

489 Table 2. Selected demographic characteristic of probands, affected siblings and second primary
 490 malignancies among the early-onset cancer patients in the linked population-based registries in
 491 California, 1989 to 2015.
 492

	Overall *	No. of probands	No. of affected siblings	No. (%) No. of affected mothers	No. of second primaries †
Overall	29 249	29 072	112	65	387
Age at diagnosis (years) ‡					
0	2592 (8.75)	2611 (8.98)	10 (8.93)	0 (0.00)	4 (1.03)
1-4	8683 (29.3)	8719 (29.99)	15 (13.39)	2 (3.08)	37 (9.56)
5-9	5054 (17.06)	5057 (17.39)	12 (10.71)	0 (0.00)	67 (17.31)
10-14	4224 (14.26)	4180 (14.38)	22 (19.64)	0 (0.00)	98 (25.32)
15-19	4734 (15.98)	4664 (16.04)	37 (33.04)	7 (10.77)	90 (23.26)
20+	4344 (14.66)	3841 (13.21)	16 (14.29)	56 (86.15)	91 (23.51)
Gender					
Male	15 528 (52.40)	15 467 (53.20)	56 (50.00)	NA	198 (51.16)
Female	14 102 (47.59)	13 605 (46.80)	56 (50.00)	65 (100.00)	189 (48.84)
Race/ethnicity					
Latino (all races)	13 281 (44.82)	13 059 (44.92)	51 (45.54)	26 (40.00)	159 (41.09)
Non-Latino White	11 410 (38.51)	11 193 (38.50)	39 (34.82)	17 (26.15)	128 (33.07)
Non-Latino Black	1772 (5.98)	1716 (5.90)	9 (8.04)	7 (10.77)	10 (2.58)
Non-Latino Asian/Pacific Islander	2605 (8.79)	2551 (8.77)	12 (10.71)	0 (0.00)	47 (12.14)
Other	563 (1.94)	553 (1.90)	1 (0.89)	15 (4.62)	43 (11.11)

493 * All early-onset cancer patients diagnosed from 1989 to 2015 identified in the linked population-
 494 based registries in California.

495 † Number of second primary malignancies diagnosed from 1989 to 2015 within all children
 496 (probands and affected siblings, excluding mothers) with early-onset cancers in the linked
 497 population-based registries in California.

498
 499

500 **Figures**

501

502 **Figure legend:**

503

504 **Figure 1: Relative risks of early-onset cancers among siblings and mothers.**

505 A. Relative risks among siblings and mothers of any early-onset cancer (diagnosed under 26
506 years of age) given a proband with cancer, 1989 to 2015, California, USA.

507 B. Relative risks by ethnic group among siblings and mothers of any early-onset cancer
508 (diagnosed under 26 years of age) given a proband with cancer, 1989 to 2015, California, USA.

509

510 Cancers were classified into groups as defined by the International Classification of Childhood
511 Cancer, Third edition (ICCC-3, November 2012) (<https://seer.cancer.gov/iccc/iccc3.html>).

512 Hematologic cancers include leukemias and lymphomas. Solid cancers include CNS tumors,
513 neuroblastomas, retinoblastomas, renal tumors, hepatic tumors, bone tumors, sarcomas, GCT,
514 epithelial neoplasms and others.

515

516 The axis for SIR was natural log-transformed. SIR and 95% CI were not calculatable for cancers
517 with zero observed case.

518 *P* was calculated assuming a Poisson distribution.

519 Abbreviations: SIR, Standardized incidence ratio. CI, confidence interval. GCT, germ cell
520 tumors, trophoblastic tumors, and neoplasms of gonads.

521

522 **Figure 2: Relative risks of siblings and mothers of specific cancers.**

523 Cancers were classified into groups as defined by the International Classification of Childhood
524 Cancer, Third edition (ICCC-3, November 2012) (<https://seer.cancer.gov/iccc/iccc3.html>).

525 Standardized incidence ratios greater than 10 were recoded to 10.

526 Siblings and mothers of a proband were diagnosed with cancer from 1989 to 2015 at 0 to 26
527 years of age.

528 *P* was calculated assuming a Poisson distribution.

529 Abbreviations: SIR, Standardized incidence ratio. CI, confidence interval. GCT, germ cell
530 tumors, trophoblastic tumors, and neoplasms of gonads.

531

532 **Figure 3. Relative risks of second primary malignancies.**

533 A. Relative risks of second primary malignancies of any early-onset cancer (diagnosed under 26
534 years of age) given a proband with cancer, 1989 to 2015, California, USA.

535 B. Relative risks of second primary malignancies of any early-onset cancer (diagnosed under 26
536 years of age) given a proband with cancer by ethnic group, 1989 to 2015, California, USA.

537

538 Cancers were classified into groups as defined by the International Classification of Childhood
539 Cancer, Third edition (ICCC-3, November 2012) (<https://seer.cancer.gov/iccc/iccc3.html>).

540 Hematologic cancers include leukemias and lymphomas. Solid cancers include CNS tumors,
541 neuroblastomas, retinoblastomas, renal tumors, hepatic tumors, bone tumors, sarcomas, GCT,
542 epithelial neoplasms and others.

543

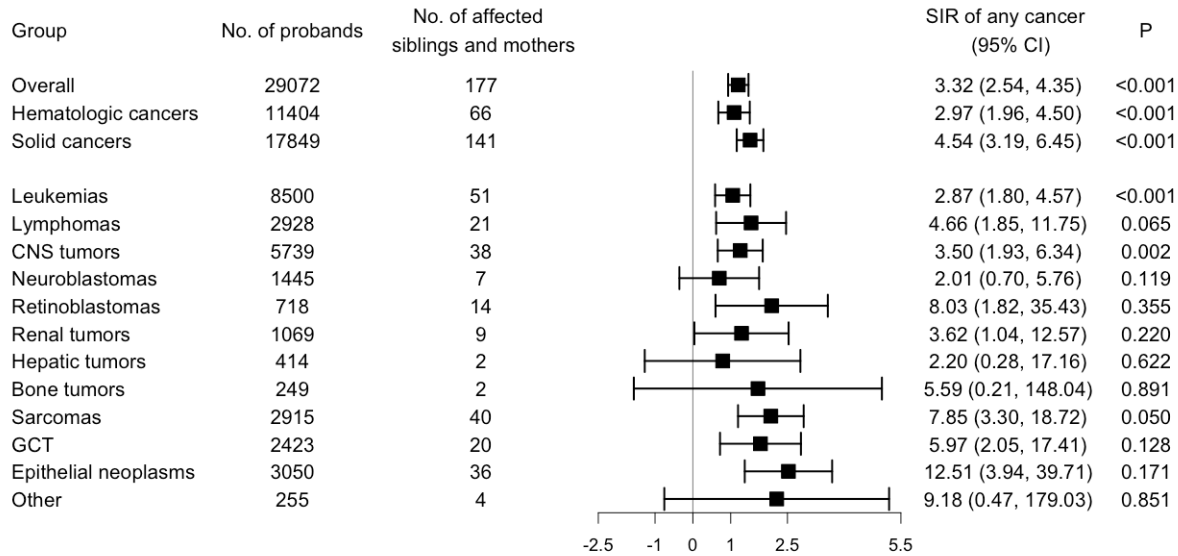
544 The axis for SIR was natural log-transformed. SIR and 95% CI were not calculatable for cancers
545 with zero observed case.

546 *P* was calculated assuming a Poisson distribution.

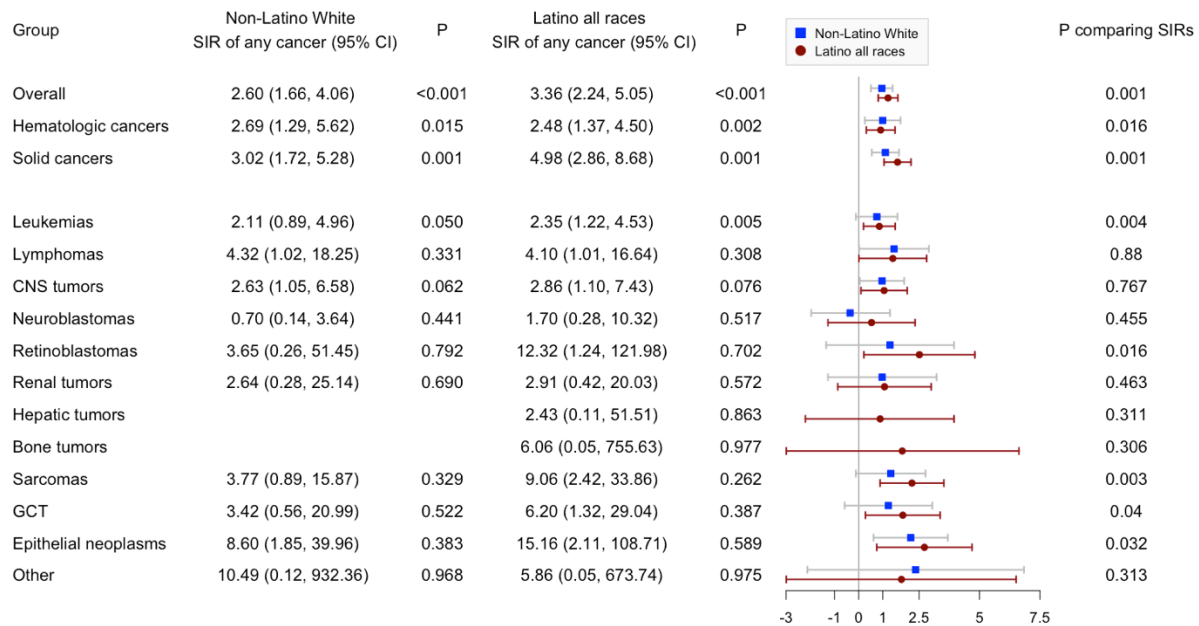
547 Abbreviations: SIR, Standardized incidence ratio. CI, confidence interval. GCT, germ cell
548 tumors, trophoblastic tumors, and neoplasms of gonads. FPM, first primary malignancy. SPM,
549 second primary malignancy.

550

551
552
553 Figure 1A.

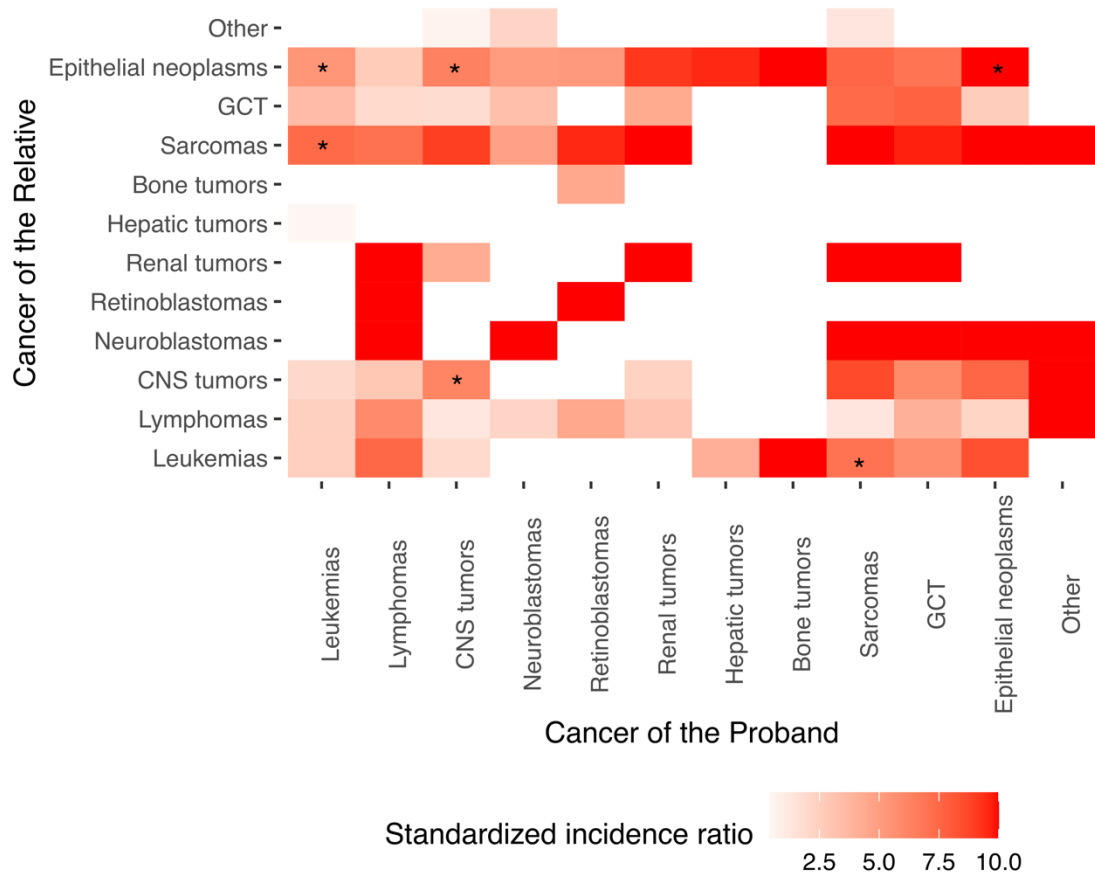


554
555 Figure 1B.
556



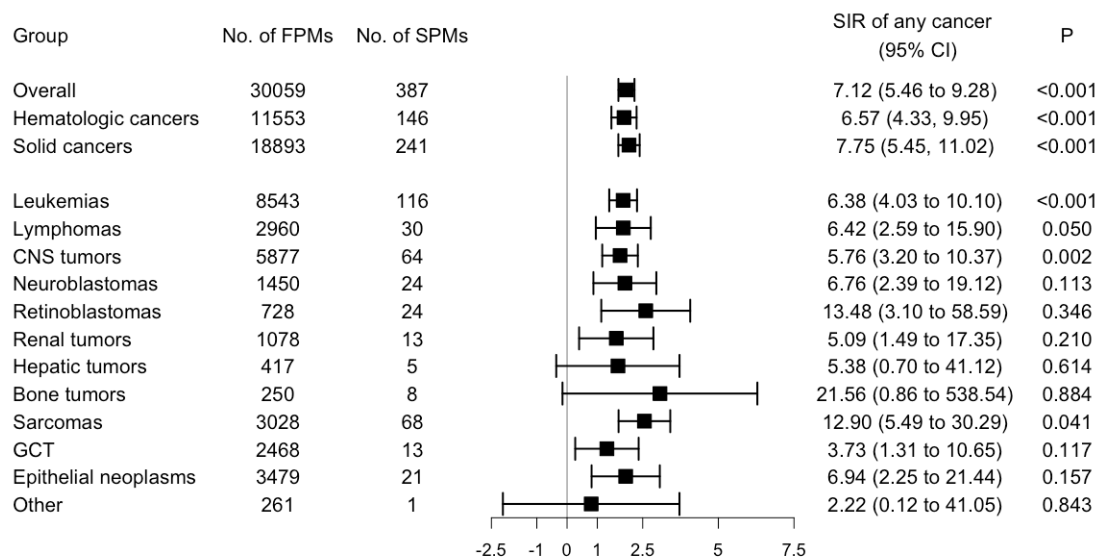
557
558
559
560
561
562
563
564

565 Figure 2.



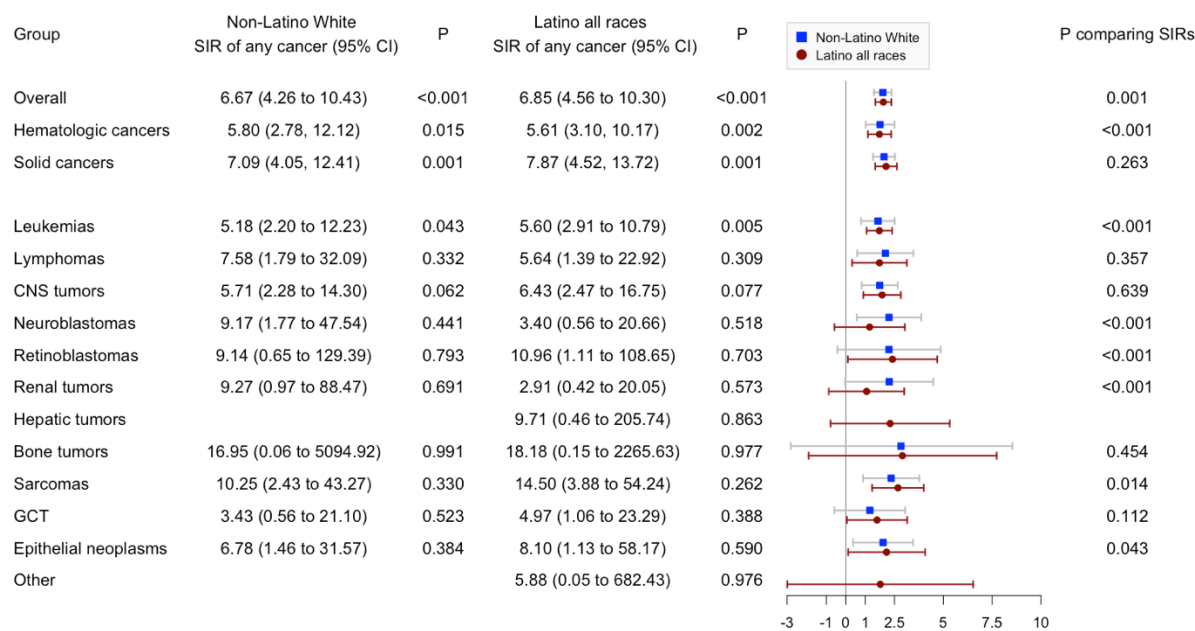
566
567
568

569 Figure 3A.



570
571
572

Figure 3B.



573
574
575
576
577
578
579
580
581