

1 Can Severity of a Humanitarian Crisis be Quantified? Assessment of the INFORM Severity Index

2

3 **Authors:** *Velma K Lopez<sup>1\*</sup>, Angeliki Nika<sup>2</sup>, Curtis Blanton<sup>1</sup>, Leisel Talley<sup>1</sup>, Richard Garfield<sup>1</sup>*

4 **Affiliations:**

5 1. *U.S. Centers for Disease Control and Prevention; Atlanta, Georgia, United States*

6 2. *ACAPS; Geneva, Switzerland*

7 *\*Corresponding author, oko8@cdc.gov*

8

9

10 **Abstract**

11 **Background:** Those responding to humanitarian crises have an ethical imperative to respond most where the  
12 need is greatest. Metrics are used to estimate the severity of a given crisis. The INFORM Severity Index, one such  
13 metric, has become widely used to guide policy makers in humanitarian response decision making. The index,  
14 however, has not undergone critical statistical review. If imprecise or incorrect, the quality of decision making  
15 for humanitarian response will be affected. This analysis asks, how precise and how well does this index reflect  
16 the severity of conditions for people affected by disaster or war?

17 **Results:** The INFORM Severity Index is calculated from 35 publicly available indicators, which conceptually  
18 reflect the severity of each crisis. We used 172 unique global crises from the INFORM Severity Index database  
19 that occurred January 1 to November 30, 2019 or were ongoing by this date. We applied exploratory factor  
20 analysis (EFA) to determine common factors within the dataset. We then applied a second-order confirmatory  
21 factor analysis (CFA) to predict crisis severity as a latent construct. Model fit was assessed via chi-square  
22 goodness-of-fit statistic, Comparative Fit Index (CFI), Tucker-Lewis Index (TLI), and Root Mean Square Error of  
23 Approximation (RMSEA). The EFA models suggested a 3- or 4- factor solution, with 46% and 53% variance  
24 explained in each model, respectively. The final CFA was parsimonious, containing three factors comprised of 11  
25 indicators, with reasonable model fit (Chi-squared=107, with 40 degrees of freedom, CFI=0.94, TLI=0.92,

26 RMSEA=0.10). In the second-order CFA, the magnitude of standardized factor-loading on the 'societal  
27 governance' latent construct had the strongest association with the latent construct of 'crisis severity' (0.73),  
28 followed by the 'humanitarian access/safety' construct (0.56).

29 **Conclusions:** A metric of crisis-severity is a critical step towards improving humanitarian response, but only  
30 when it reflects real life conditions. Our work is a first step in refining an existing framework to better quantify  
31 crisis severity.

32

33 **Keywords:** humanitarian crisis, severity, factor analysis

34

35

## 36 **Background**

37

38 Humanitarian crises present a multitude of possible harmful health consequences for individuals (1). When  
39 populations are displaced, new settlements can have poor housing and sanitation conditions, leading to  
40 increased prevalence of acute infectious diseases, such as respiratory and enteric illnesses (2,3). Disruption of  
41 food systems can result in acute malnutrition (4,5) as well as further chronic malnutrition (6). In addition,  
42 interruption of health services limits the management of chronic diseases (7), access to sexual and reproductive  
43 health care (8), and distribution of immunizations among children(9). Mental health disorders, namely post-  
44 traumatic stress disorder, depression, and anxiety, are common among the displaced (10). While each of these  
45 morbidities are harmful on their own, they often interact, worsening overall wellbeing (1), and playing a role in  
46 the larger ecosystem that affects high mortality rates among crisis-affected people (11). Moreover, the impacts  
47 of humanitarian crises go beyond individual well-being to negatively influence communities, society, and the  
48 environment (12). Given the potentially devastating and longstanding impact of a humanitarian crisis, it is critical  
49 to provide aid where it is needed most.

50

51 The need for humanitarian assistance is great; yet there is limited funding available for response. For example,  
52 in 2020, the United Nations Office for the Coordination of Humanitarian Affairs (UNOCHA) estimated that there  
53 were 166.5 million people requiring humanitarian assistance and a gap of \$14 billion (USD) in aid funding (13).  
54 With limited funding, it is imperative to assess which populations are in the greatest need and allocate resources  
55 accordingly. Currently, the United Nations (UN) system uses the crisis metric *number of people in need (PIN) of*  
56 *humanitarian assistance* to guide aid allocation. Because crises are diverse, the definition of PIN is non-specific  
57 (14) and the estimation is based on non-standardized data collection (15). Thus, using PIN as a basis of allocating  
58 resources may be limited. One step towards improving aid allocation is shifting the paradigm away from asking  
59 “how many people are in need?” and towards, “how bad are their needs?”. Accordingly, a systematic metric of  
60 crisis severity, that is “how bad is it?”, would reflect needs in ongoing crises and predict severity if conditions

61 change (16). Applying a component measurement of crisis severity to aid allocation should help align resource  
62 distribution with core humanitarian principles: humanity, impartiality, independence, and neutrality.

63

64 Developing a metric to quantify the severity of a crisis is challenging. First and foremost, humanitarian crises are  
65 diverse and evolving events. Of the metrics that can be applied to a wide array of crises, most are designed for  
66 intra-country assessment of severity (e.g., the UNOCHA's Humanitarian Needs Comparison Tool (17) or Kandeh  
67 et al.'s assessment of crisis-related vulnerability in Yemen (18)). While it is useful to assess geographic  
68 disparities, the need for humanitarian assistance is often based on estimates of overall crisis severity. For  
69 example, Bayram et al.'s 2012 Public Health Impact Severity Scale recommends using expert opinion to rank 12  
70 indicators from the Sphere Project "Minimum Standards", with the final severity score reflecting a weighted sum  
71 of the ranks (19). This framework, however, has yet to be implemented as the authors state limited availability  
72 of timely data. Eriksson et al. proposed a similar approach of ranking and summing key variables, but  
73 conceptualized severity as more holistic predictor of humanitarian need by drawing on psychological theory and  
74 ranked variable importance based on presence of the indicator in the literature (20). Like the Public Health  
75 Impact Severity Scale, use of their model has not been widespread.

76

77 The current model used to quantify crises severity is the INFORM Severity Index, a metric based on comparable  
78 data drawn from publicly available sources (21). Developed via partnerships and through consensus building  
79 among experts, the index uses a conceptual framework that describes crisis severity as a complex, multi-  
80 factorial construct after the immediate, emergency phase of crisis. The index is used by policymakers to set or  
81 justify priorities for providing humanitarian support, bring attention to unknown crises, and to monitor crisis  
82 trends. However, the model has not to date undergone statistical review.

83

84 We seek to critically evaluate the overall index model structure and assess the relationships between indicators.  
85 The INFORM Severity Index database, which was publicly available under the name 'Global Crisis Severity Index

86 (GCSI)', included 172 unique crises in the version released in December 2019. These crises were either ongoing  
87 as of November 30, 2019, or had occurred earlier in 2019. The INFORM model inputs 35 unique indicators  
88 across three pillars ('impact of the crisis', 'complexity of the crisis', 'conditions of the people') to estimate crisis  
89 severity (see Table 1 for data and definitions and Appendix 1 for details regarding the GCSI construction).  
90 Because this is the most commonly used data source for humanitarian stakeholders to assess crisis severity, our  
91 objective is to determine if the entire model or a subset of its components could be used to estimate crisis  
92 severity through a score. Importantly, the GCSI dataset tracks diverse crises and analysis of it provides insight  
93 into severity of a wide range of emergency events. Here, we applied factor analysis, a method commonly used  
94 for data reduction of highly correlated and grouped data. This review is an attempt to generate a more robust  
95 estimate of crisis severity.

96

## 97 **Methods**

98

99 *Data:* We analyzed data from the beta version of the INFORM Severity Index database, which was publicly  
100 available under the name 'Global Crisis Severity Index (GCSI)' and released in December 2019 (33). We  
101 extracted data from 172 unique global crises that were either ongoing as of November 30, 2019, or had  
102 occurred earlier in 2019. Appendix 1 describes how the INFORM Severity Index is calculated.

103

104 *Measures:* The GCSI uses a total of 35 ordinal indicators to represent three pillars (impact of the crisis,  
105 complexity of the crisis, conditions of the people), which we consider latent constructs (Table 1). Each ordinal  
106 indicator is scored based on continuous variables. The first construct, 'the impact of the crisis', is comprised of  
107 11 indicators, all of which are ordinal versions of data collected from the specific crisis. The second construct,  
108 'the complexity of a crisis', is comprised of 22 indicators. Of these indicators, 12 are publicly available indices;  
109 one is an ordinal version of data collected from the specific crisis; and the remaining nine indicators reflect  
110 qualitative information that is given a quantitative score. The final construct, 'conditions of the people', has two

111 indicators, each of which uses estimates of the number of people in need of humanitarian assistance for the  
112 given crisis. Spearman's rank correlation coefficients for all indicators are presented in Appendix 1. From the 35  
113 GCSI indicators, we removed three indicators that had more than 25% of observations missing.

114

115 *Analytical Approaches:* Modeling a construct such as 'severity' requires leveraging information from multiple  
116 indicators. Any approach that does not account for correlation between the indicators will likely result in  
117 imprecise final estimates. Thus, our analytical framework uses structural equation modeling to predict crisis  
118 severity. This method explicitly includes measurement error for each indicator, assessment of model fit – both  
119 overall and at the indicator level -, and prediction from optimal combinations of indicators. The overall goal of  
120 the analysis is to deduce causal relationships by accounting for correlation coefficients. To do so, we have a two-  
121 step approach. First, we used exploratory factor analysis (EFA) to identify patterns of grouping among the  
122 indicators. This step provided insight on whether the data supported the GCSI pillar construction. We then  
123 applied confirmatory factor analysis (CFA) to test whether the identified relationships from the EFA were  
124 statistically meaningful and if the multiple latent constructs were inter-related (as hypothesized by the GCSI  
125 pillar construction).

126

127 Exploratory Factor Analysis: We evaluated the relationships between 32 indicators in the GCSI conceptual  
128 framework through EFA. Based on an initial scree plot, we employed four maximum likelihood EFA models,  
129 ranging from 3- to 6 -factor solutions, each with an oblimin rotation, that is, correlation was permitted between  
130 factors (34). Missing values were imputed with the indicator median within all EFAs. We evaluated the models  
131 for the following characteristics: sums of squared loadings greater than 1.0 for each factor; factors that  
132 contribute to at least 10% to the overall variance; and collective contribution of at least 60% of the overall  
133 variance. Next, we reviewed the indicator factor loadings to identify latent constructs within the dataset.

134

135 Using the information learned from the EFA models, we removed indicators from the dataset if they did not  
136 provide unique information to identified factors as their inclusion in a final score could lead to either bias or  
137 imprecision. Indicators were removed if they had factor loadings less than 0.30 or cross-loaded onto more than  
138 one factor with a loading less than 0.20, or if cross-loadings had values in opposite directions (for example, 0.37  
139 and -0.33).

140

141 Confirmatory Factor Analysis: With the reduced dataset and using standardized indicators, we applied a full  
142 information maximum likelihood CFA to model crisis severity. First, we built first-order CFAs with relationships  
143 identified in the EFA. We removed indicators from the CFAs if they had residuals greater than 0.10 with  
144 indicators on different latent constructs. We also added covariances between indicators on the same latent  
145 construct if their residual correlation was greater than 0.10. Finally, we added a second-order latent construct to  
146 the model, which represented 'crisis severity'. Model fit was assessed via chi-square goodness-of-fit statistic,  
147 Comparative Fit Index (CFI), Tucker-Lewis Index (TLI), and Root Mean Square Error of Approximation (RMSEA).  
148 Acceptable model fit was evaluated using recommended cut-offs characterized as CFI and TLI greater than 0.90  
149 and RMSEA less than 0.08 (35).

150

151 We also estimated values for the latent crisis severity variable (i.e., factor scores) based on the factor loadings in  
152 the second-order CFA. Latent severity scores were normalized to range from zero to one.

153

154 We conducted several subanalyses to determine the robustness of the overall results. These analyses focused  
155 on: incorporating the 'people in need of humanitarian assistance' indicator within the final models (see  
156 Appendix 5); data quality implications (see Appendix 6); comparison of the modeled scores to the original scores  
157 (see Appendix 7); the role of governance when estimating crisis severity (Appendix 8); the implication of missing  
158 data (see Appendix 9); and the overall model fit bootstrapped subsamples of the dataset (see Appendix 10).

159 Analyses were conducted using the R (version 3.6.2) packages *psych*, *GPArotation*, and *lavvan*; see Appendix 4  
160 for primary analyses' R code.

161  
162 The Human Research Protection Office within the Center for Global Health at the Centers for Disease Control  
163 and Prevention reviewed the study and determined it to be non-research.

164

165

## 166 **Results**

167

### 168 ***Original GCSI Score***

169 The GCSI includes a large number of indicators (Table 1), which reflect both crisis related data and non-crisis  
170 related data. The original GCSI score is generated from combining these indicators into pillars, which are then  
171 aggregated into a score. For example, the complex emergency in Somalia, coded as *SOM001* in the GCSI  
172 database, was classified as having “High Severity” with a score of 4.0 as of November 2019. Qualitatively, there  
173 is concurrence between the GCSI score given to the Somali crisis and the nation’s social structure and events  
174 that have occurred there: approximately four million people needed humanitarian assistance in Somalia in 2019,  
175 and millions had been displaced by recurring conflict, insecurity, forced evictions, drought, and floods (see  
176 <https://www.unocha.org/somalia>). The GCSI Severity Score for Somalia was estimated via a weighted mean of  
177 the values derived for each pillar: 4.4 (with a 0.2 weight applied) for the Impact of the Crisis, 4.4 (with a 0.3  
178 weight applied) for the Complexity of the Crisis, and 3.0 (with a 0.5 weight applied) for the Conditions of the  
179 People. The data feeding into these estimates, and their values, are presented in Figure 1. Within the figure,  
180 each box is a data point, each oval represents the aggregation of the boxes (or other ovals) preceding it  
181 (represented by an arrow), and each circle represents the aggregation into the GCSI pillars. Importantly, each  
182 pillar calculation, and the calculation of the sub-indicators used in the pillar score, is unique (see Appendix 1 for  
183 details). Briefly, the pillar scores are derived using the following approaches:



184        ☐ The Impact of the Crisis (Figure 1A) is the weighted sum of two composite indicators - The Human  
185        Impact (weighted at 0.7) and the Geographical Impact (weighted at 0.3). The Human Impact Score is an  
186        aggregate of 4 sub-indicators, however, for Somalia, data are only available for 3 components. The  
187        Geographical Impact is a mean score generated from two sub-indicators.

188        ☐ The Complexity of the Crisis (Figure 1B) is estimated by calculating the geometric mean of two  
189        composite indicators – Society and Safety and Operating Environment. The Society and Safety Score  
190        reflect a mean of three sub-indicators, each with a different number of data inputs. Missing inputs, such  
191        as ‘Gender Inequity’ in Somalia, are ignored during aggregation. The Operating Environment Score is  
192        estimated from the average value of a sub-indicator and a data input variable. However, here, the sub-  
193        indicator aggregation mostly reflects summation, and is scaled if there are more than two variables that  
194        contribute to the sub-indicator.

195        ☐ Conditions of the People as a Result of the Crisis (Figure 1C) is the average of two sub-indicators –  
196        Current Humanitarian Conditions of the Total Population, and Current Humanitarian Conditions of the  
197        Population Affected. Here, the population is ranked into one of five levels: 1. those facing minimal  
198        humanitarian need, 2. those in stressed humanitarian conditions and needs, 3. those in moderate  
199        humanitarian conditions and needs; 4. those in severe humanitarian conditions and needs, and 5. those  
200        in extreme humanitarian conditions and needs. The Current Humanitarian Conditions of the Total  
201        Population sub-indicator reflects the sum of people in levels 3-5, which is then ranked. The Current  
202        Humanitarian Conditions of the Population Affected sub-indicator, however, is calculated slightly  
203        differently. Here, the highest level is taken if the percent of the population affected at that level is  
204        greater than 5%. For example, the Somalia crisis is given a value of 3 for this indicator because 11.5% of  
205        the population affected fall into level 3 of need.

206        Overall, Figure 1 paints an intricate, and convoluted, picture of data relationships used to classify the severity of  
207        the Somali crisis. Understanding these relationships sheds insight into how these data can be used to generate  
208        severity values.

209  
210  
211  
212  
213  
214  
215  
216  
217  
218  
219  
220  
221  
222  
223  
224  
225  
226  
227  
228  
229  
230  
231  
232  
233

*GCSI Analysis*

To guide our analysis, we first examined the following characteristics of the GCSI data frame: correlation between indicators, distributions of indicators, and the proportion of non-missing data. The indicators are highly correlated (see Appendix 1) within the conceptual GCSI pillars and between them, with approximately 31% of the indicators having correlation coefficients greater than +/-0.6. The correlation values suggest complex underlying relationships, and inference thereof required a method that accounts for statistical dependencies. Mean and median values of the ordinal scores did not differ greatly for most indicators, suggesting only slightly skewed distributions (Table 2) and the appropriate application of parametric methods. Three indicators had a substantial proportion of missing data ('Number of people ill'; 'Number of people injured'; 'Number of fatalities'), so we removed them from our analysis. Seventy-five to 100% of observations were available for the remaining 32 indicators. The indicators related to people displaced from a crisis had the two lowest number of observations (75% and 77% of total observations), as did the indicator for people in need (80% of total observations).

We applied factor analysis to test whether the indicators in the GCSI dataset could be used to generate an estimate of crisis severity. Our approach had two primary steps: exploratory factor analysis (EFA), followed by confirmatory factor analysis (CFA). We removed all "pillar" aggregated values and only used the input data to generate our models. In the EFA model, we imputed median values of a given indicator if the observation was missing, while in the CFA model, we used maximum likelihood to address missing information. To assess whether these approaches influenced the final model estimates, we also ran the EFA model using case deletion for missing observations and the CFA model using multiple imputation (Appendix 9). We found negligible differences between the results from these different approaches and those presented here (Appendix 9).

234 EFA: We examined 32 of the 35 GCSI variables to assess their grouped correlation patterns. The EFA models  
235 suggested a 3- or 4-factor solution (Table 3). While the 5- and 6-factor solutions had greater cumulative variance  
236 explained. The proportion variance explained for each factor did not add substantive information to the model.  
237 This was also evident in the indicator factor loadings for these models, which showed more cross-loadings  
238 between indicators on factors with less than 10% proportion variance explained (see Appendix 2 for factor  
239 loadings for 5- and 6-factor solutions).

240

241 Additional examination of the factor loadings in 3- and 4- factor models highlighted three primary findings  
242 (Table 4). First, several indicators had factor loadings less than 0.30, which implies that they do not contribute to  
243 any of the factors. Second, indicator cross-loadings onto multiple factors were common, and thus, these  
244 indicators did not provide unique information. Finally, the indicators grouped into a pattern similar to sections  
245 of the GCSI conceptual framework. In both solutions, factor 1 was comprised of indicators related to societal  
246 constructs (and originally conceptualized as part of the ‘complexity of the crisis’), while indicators within the  
247 ‘impact of the crisis’ construct grouped together in factor 2. Factor 3 was comprised of indicators related to  
248 humanitarian access and safety; while the fourth factor was a further disaggregation of factor 2. Of note, the  
249 EFA results did not show that indicators related to ‘conditions of the people’ had mathematical importance.  
250 Indicators excluded from subsequent CFA models are shown in Table 4.

251

252 CFA: We initially built four different CFA models to reflect the relationships identified with the factor loadings in  
253 the EFAs; each of the four models had an increasing number of latent constructs (from three constructs to six  
254 constructs).

255

256 The CFA with three latent constructs (base model) was appropriately specified but showed poor fit (Table 5).  
257 Indicators were removed and covariances added to reflect the residual correlations of indicators across the  
258 dataset (see Appendix 3 for correlation matrix) until the best model fit was generated (final model in Table 5).

259 The final CFA contained 11 indicators: rule of law, democracy, freedom, gender inequality, empowerment,  
260 number of people killed, restricted movement, obstructed access to assistance, percent of landmass affected,  
261 people living in the affected area, people affected. We used this model to create a second-order CFA (Figure 2).  
262 The model fit statistics of the second-order CFA were the same as the fit statistics of the final first-order CFA  
263 model (Table 5). In the second-order CFA, the magnitude of standardized factor-loading on the 'societal  
264 governance' latent construct had the strongest association with the latent construct of 'crisis severity' (0.73),  
265 followed by the 'humanitarian access/safety' construct (0.56).

266

267 The CFA with four latent constructs had a non-positive covariance matrix when a second order latent variable  
268 was added. No solutions were found for the 5 or 6 latent variable models.

269

270 Severity score: We used the final CFA model to generate normalized severity scores for each crisis (which range  
271 between 0 and 1 to represent low to high severity). The mean and median latent severity score for all crises  
272 were similar, at 0.53 and 0.54, respectively. Severity scores were highest in complex crises and fell within the  
273 upper two-thirds of all scores (Figure 3). Regional crises, conversely, had a lower mean severity score. These  
274 types of crises fell into the bottom two-thirds of the range. Crises in countries that had a mean severity score of  
275 greater than 0.90 included Syria, Somalia, Yemen, and The Democratic People's Republic of Korea, whereas  
276 countries with mean severity scores less than 0.10 included Costa Rica and Brazil.

277

## 278 **Discussion**

279

280 Our analyses show that crisis severity can be measured best through use of only 11 of the 35 GCSI indicators. Put  
281 another way, 24 of the 35 indicators used in the GCSI model do not contribute useful numerical information. In  
282 our final model, the strongest predictors of severity were a suite of indicators related to social  
283 structure/governance of a given nation state (rule of law, freedom, gender inequality, and empowerment),

284 followed by indicators that were proxy measurements of humanitarian access/safety (number of people killed,  
285 restricted movement, and obstructed access to assistance). Weaker, although still relevant, predictors were  
286 related to the crisis impact on people and the environment. Overall, this analysis suggests that most of the key  
287 variables to estimate the severity of humanitarian need can be assessed globally, can be collected in a  
288 comparable way from one country to another, and do not depend on sudden changes to local conditions that  
289 would be unavailable to those making the calculations. In short, despite changing conditions and limited or  
290 imperfect information, we can use existing data sources to make reasonable estimates of severity around the  
291 world. Refinements to the existing GCSI model will make it easier and more reliable to make these estimates.

292

293 Holistically, the 11 selected indicators suggest that fragile states with limited accessibility for humanitarian  
294 actors have worse humanitarian conditions. This final model aligns with humanitarian actors' experiences.  
295 Indeed, good governance is intrinsically related to avoiding or mitigating a humanitarian crisis (12). We tested  
296 the role of governance in our models (see Appendix 8) and found it to be a key latent construct of severity,  
297 but only when crisis related variables were also included in the model. Broadly, economic and political stability  
298 are key components to this success, with inequality between social groups cited as a driver of crises and conflicts  
299 (22). It is unsurprising that humanitarian practitioners call for more robust inclusion of conflict early warning into  
300 preparedness systems for humanitarian crises (23). Indeed, considerable funding has been provided to post-  
301 conflict states for democracy development and peacebuilding, albeit with mixed success (24,25). Ample  
302 evidence supports these patterns, as data from the last 15 years show most humanitarian crises are re-occurring  
303 in the same countries, many of which are fragile states (13). Chad, the Central African Republic, the Democratic  
304 Republic of Congo, Somalia, and Sudan have all had 15 crises between 2005 and 2015.

305

306 Beyond governance, access to reach those in need is also important to reducing crisis severity. Humanitarian  
307 access, the ability to reach the most vulnerable, can be limited through various mechanisms. Restricted  
308 movements, which are common in conflicts and complex humanitarian crises, inhibit connections between aid

309 workers and communities (26). Access can also be reduced through violence and obstruction. Within armed  
310 conflicts, bureaucratic and security constraints, and violence against aid workers and facilities distributing aid,  
311 have been cited as rationale for greatly reduced humanitarian access (26,27). For example, in the Syrian crisis,  
312 which is considered one of the worst in the world by humanitarian experts, UNOCHA reported that 1.1 million  
313 people were in need of humanitarian assistance in hard-to-reach-places in 2018; during this same year, access  
314 was inhibited by 142 attacks on health facilities, with 102 people dead and 189 injured (28). Thus, it is not  
315 surprising that our model results give weight to indicators reflecting the quality of humanitarian access (e.g.,  
316 restricted movements, obstructed access, and number of people killed) for a given crisis.

317

318 Importantly, our final model differs from the original GCSI in two fundamental ways. First, we presented a  
319 parsimonious model, which removed 24 GCSI indicators. Using the reduced set of 11 indicators, the model  
320 showed acceptable fit, but had slightly higher error than the standard cut points; however, some debate exists  
321 on the usefulness of applying a single heuristic to assess model fit within factor analysis (29). The original GCSI  
322 was calculated using inconsistent approaches, and notably, does not account for basic statistical properties of  
323 correlated data. The high correlation in the dataset inhibits meaningful interpretation of combined values from  
324 the indicators. Second, we removed an entire GCSI pillar ('conditions of the people') as a result of insights from  
325 the EFA models, which has programmatic significance. Indeed, the data underlying the excluded indicators are  
326 routinely collected to estimate the number of people in need of humanitarian assistance. Given the strong value  
327 of these indicators to practitioners, we re-ran the final model and included these two indicators as standalone  
328 independent variables (Appendix 5). Of note, we did not include the two indicators as latent constructs, as our  
329 EFA analyses showed that they were not correlated. This sensitivity analysis suggested that a model including  
330 the *number of people affected* indicator has comparable model fit and yields similar severity scores to the  
331 second-order CFA model.

332

333 Our analysis, however, is limited by the data available for inclusion. First, the index includes a combination of  
334 static and dynamic variables. It is possible that static variables, such as those used to estimate social  
335 structure/governance are distal determinants of a crisis, rather than proximal measures. Additionally, we used  
336 population average data, which masks any disparities experienced within a population. Several population  
337 groups, namely, children, women, and the disabled, have worse crisis-related health outcomes than the rest of  
338 the population. Moreover, data from humanitarian crises are difficult to obtain, highly inaccurate, and highly  
339 correlated. While our sensitivity analyses assessing data quality suggest that our final model contained data that  
340 was no more or less reliable than the indicators excluded (Appendix 6), we cannot account for the lack of  
341 precision within the dataset. We included two indicators based on expert assessment of qualitative information  
342 (restricted movement, and obstructed access to assistance), which may be subject to imprecision or bias.  
343 Likewise, mortality estimates, which we also included in the final model, have been contested for accuracy in  
344 past crises (30,31). Additionally, the indicator for ‘relative people living in the affected area’ is highly correlated  
345 with many of the other variables in the final model. In an ideal scenario, this indicator would be removed from  
346 the model, however, when it was, the models did not converge. Thus, one limitation of retaining the variable is a  
347 slightly higher error than desired. Finally, we are limited in our ability to test the generalizability of the model  
348 given the small sample size and lack of additional data for testing. Nevertheless, our comparison of the model fit  
349 statistics and factor loadings to suggest that the model performance is consistent and unlikely overfit to the data  
350 (Appendix 10).

351  
352 Importantly, a gold standard for crisis severity is unavailable to validate our model results and out-of-sample  
353 data were not available to assess predictions. In lieu of traditional validation, we compared the latent severity  
354 scores to the original GCSI scores (Appendix 7). These robustness checks suggested that the latent severity score  
355 may be a closer measure to true crisis severity than the original GCSI. Despite the limitations with data  
356 availability and independent data source for validation, we emphasize that this work is a first step towards  
357 improving crisis severity measurement. Because the calculations are derived from a model that weights

358 indicators based on their correlations, estimating severity for a new crisis would require re-running the final CFA.  
359 Further research is needed to assess the feasibility of linking this framework with a field friendly application for  
360 humanitarian actors after additional analyses have been conducted.

361

## 362 **Conclusion**

363

364 UN-coordinated humanitarian responses are lasting longer (32), with the average 2005 response ongoing for  
365 about four years compared to the 2017 response of seven years. Meanwhile, human and financial resources for  
366 humanitarian response are limited. More complicated responses, coupled with calls for increased resources,  
367 emphasize the need for objective tools to guide resource allocation. Indeed, a metric of crisis severity can add  
368 powerful contributions to determine priorities for humanitarian response, highlighting whether severity and  
369 subsequent aid/response align. However, a metric of crisis- is only useful if the metric is scientifically robust. Our  
370 work is a first step in refining an existing framework to quantify crisis severity. We suggest three additional areas  
371 of needed exploration. As presented here, we recommend all future iterations of modeling crisis-severity  
372 consider severity as a multi-faceted construct. In doing so, practitioners should strive to create a parsimonious  
373 model. Inherently, humanitarian data are subject to high levels of uncertainty, and nonparsimonious models  
374 may further limit clear interpretation of severity within this context. Additionally, we recommend that future  
375 work consider longitudinal metrics of severity, as crises change within a given location over time. After further  
376 testing this model with additional crises, opportunities for converting model output to a dashboard or  
377 application for humanitarian actors should be explored. At the time of writing this manuscript, the current GCSI  
378 estimates were available in a large spreadsheet available at <https://data.humdata.org/>. They are now also  
379 available on the ACAPs website (<https://www.acaps.org/methodology/severity>) in an interactive dashboard and  
380 available to be accessed through an Application Programming Interface (API; <https://api.acaps.org/>). This  
381 interface provides a blueprint for merging robust statistical output with information needed by data users. With



382 these recommendations in place, humanitarian actors can apply the humanitarian principle of impartiality when  
383 determining where need is the greatest and to best respond to crises.

384

385 **List of abbreviations**

386

387 UNOCHA: United Nations Office for the Coordination of Humanitarian Affairs

388 UN: United Nations

389 GCSI: Global Crisis Severity Index

390 EFA: Exploratory Factor Analysis

391 CFA: Confirmatory Factor Analysis

392 CFI: Comparative Fit Index

393 TLI: Tucker-Lewis Index

394 RMSEA: Root Mean Square Error of Approximation

395 API: Application Programming Interface

396

397 **Declarations**

398 ***Ethics approval and consent to participate:*** Not applicable

399

400 ***Consent for publication:*** Not applicable

401

402 ***Availability of data and materials:*** The datasets generated and/or analysed during the current study are

403 available in the *GCSI Database Beta Version – November 2019* repository,

404 <https://data.humdata.org/dataset/inform-global-crisis-severity-index>

405

406 ***Competing interests:*** The authors declare that they have no competing interests

407

408 **Funding:** Not applicable

409

410 **Authors' contributions:** RG and VKL designed the research question, with assistance from AN. VKL and CB

411 designed the analysis plan, and VKL conducted all analyses. VKL wrote the manuscript in consultation with RG,

412 AN, CB, and LT. All authors provided critical feedback to help shape the analysis and manuscript.

413

414 **Acknowledgements:** The following individuals provided value feedback on our methods and results: Mahlet

415 Woldetsadik, Luca Vernaccini, Stefano Disperati, and Karmen Poljansek. We thank them for their insights, which

416 helped to strengthen this analysis.

417

418 **CDC disclaimer:** The findings and conclusions in this report are those of the authors and do not necessarily

419 represent the official position of the Centers for Disease Control and Prevention.

420

## 421 **References**

- 422 1. Kohrt BA, Carruth L. Syndemic effects in complex humanitarian emergencies: A framework for  
423 understanding political violence and improving multi-morbidity health outcomes. Soc Sci Med [Internet].  
424 2020;(September):113378. Available from: <https://doi.org/10.1016/j.socscimed.2020.113378>
- 425 2. Hammer CC, Brainard J, Hunter PR. Risk factors and risk factor cascades for communicable disease  
426 outbreaks in complex humanitarian emergencies: A qualitative systematic review. BMJ Glob Heal.  
427 2018;3(4):1–10.
- 428 3. Connolly MA, Gayer M, Ryan MJ, Salama P, Spiegel P, Heymann DL. Communicable diseases in complex  
429 emergencies: Impact and challenges. Lancet. 2004;364(9449):1974–83.
- 430 4. Mason JB, White JM, Heron L, Carter J, Wilkinson C, Spiegel P. Child acute malnutrition and mortality in

- 431 populations affected by displacement in the horn of Africa, 1997-2009. *Int J Environ Res Public Health*.  
432 2012;9(3):791–806.
- 433 5. Bahwere P. Severe acute malnutrition during emergencies: Burden, management, and gaps. *Food Nutr*  
434 *Bull*. 2014;35(2):S47–51.
- 435 6. Kiess L, Aldern N, de Pee S, Bloem MW. Nutrition in Humanitarian Crises. In: *Nutrition and Health in a*  
436 *Developing World* [Internet]. Cham: Springer International Publishing; 2017. p. 647–64. Available from:  
437 [http://link.springer.com/10.1007/978-3-319-43739-2\\_29](http://link.springer.com/10.1007/978-3-319-43739-2_29)
- 438 7. Jobanputra K, Boulle P, Roberts B, Perel P. Three Steps to Improve Management of Noncommunicable  
439 Diseases in Humanitarian Crises. *PLoS Med*. 2016;13(11):8–11.
- 440 8. Austin J, Guy S, Lee-Jones L, McGinn T, Schlecht J. Reproductive Health: A Right for Refugees and  
441 Internally Displaced Persons. *Reprod Health Matters*. 2008;16(31):10–21.
- 442 9. Lam E, Diaz M, Maina AGK, Brennan M. Displaced populations due to humanitarian emergencies and its  
443 impact on global eradication and elimination of vaccine-preventable diseases. *Confl Health* [Internet].  
444 2016;10(1):5–7. Available from: <http://dx.doi.org/10.1186/s13031-016-0094-5>
- 445 10. Charlson F, van Ommeren M, Flaxman A, Cornett J, Whiteford H, Saxena S. New WHO prevalence  
446 estimates of mental disorders in conflict settings: a systematic review and meta-analysis. *Lancet*  
447 [Internet]. 2019;394(10194):240–8. Available from: [http://dx.doi.org/10.1016/S0140-6736\(19\)30934-1](http://dx.doi.org/10.1016/S0140-6736(19)30934-1)
- 448 11. Heudtlass P, Speybroeck N, Guha-Sapir D. Excess mortality in refugees, internally displaced persons and  
449 resident populations in complex humanitarian emergencies (1998-2012) - Insights from operational data.  
450 *Confl Health* [Internet]. 2016;10(1):1–11. Available from: <http://dx.doi.org/10.1186/s13031-016-0082-9>
- 451 12. Albala-Bertrand JM. Complex emergencies versus natural disasters: An analytical comparison of causes  
452 and effects. *Oxford Dev Stud*. 2000;28(2):187–204.

- 453 13. United Nations Office for the Coordination Humanitarian Affairs (OCHA). Global Humanitarian Overview  
454 2020 [Internet]. Geneva; 2019. Available from: <http://data.unicef.org>.
- 455 14. WHO. Global Health Cluster Guidance: People in Need Calculations. 2021.
- 456 15. Inter Agency Standing Committee (IASC). Humanitarian Population figures. 2016.
- 457 16. Garfield R. Measuring humanitarian emergencies. *Disaster Med Public Health Prep.* 2007;1(2):110–6.
- 458 17. OCHA. Humanitarian Needs Comparison Tool Guidance. Geneva Off Coord Humanit Aff [Internet].  
459 2014;(August 2014):1–13. Available from: [https://www.humanitarianresponse.info/programme-](https://www.humanitarianresponse.info/programme-cycle/space/document/humanitarian-needs-comparison-tool-guidance)  
460 [cycle/space/document/humanitarian-needs-comparison-tool-guidance](https://www.humanitarianresponse.info/programme-cycle/space/document/humanitarian-needs-comparison-tool-guidance)
- 461 18. Kandeh J, Kumar L. Developing a relative ranking of social vulnerability of governorates of Yemen to  
462 humanitarian crisis. *ISPRS Int J Geo-Information.* 2015;4(4):1913–35.
- 463 19. Bayram JD, Kysia R, Kirsch TD. Disaster Metrics: A Proposed Quantitative Assessment Tool in Complex  
464 Humanitarian Emergencies - The Public Health Impact Severity Scale (PHISS). *PLoS Curr.* 2012;1–21.
- 465 20. Eriksson A, Ohlsén YK, Garfield R, von Schreeb J. Who Is Worst Off? Developing a Severity-scoring Model  
466 of Complex Emergency Affected Countries in Order to Ensure Needs Based Funding. *PLOS Curr Disasters*  
467 [Internet]. 2005;2003–5. Available from: <http://currents.plos.org/disasters/index.html%3Fp=25295.html>
- 468 21. ACAPS. Methodology: Severity [Internet]. 2018 [cited 2019 Oct 28]. Available from:  
469 <https://www.acaps.org/methodology/severity>
- 470 22. Klugman J. Policy Brief: Social and Economic Policies to Prevent Complex Humanitarian Emergencies  
471 Lessons from Experience. Helsinki; 1999.
- 472 23. Maxwell D, Hailey P. Towards Anticipatory Information Systems and Action<sup>2</sup>: Notes on Early Warning and  
473 Early Action in East Africa. Boston; Nairobi; 2020.
- 474 24. François M, Sud I. Promoting Stability and Development in Fragile and Failed States. *Dev Policy Rev.*

- 475 2006;24(2):141–60.
- 476 25. Marks SP. Peace-Building and Democratic Empowerment: Lessons From Cambodia. *Med Glob Surviv*  
477 [Internet]. 1994; Available from: <https://ippnw.org/pdf/mgs/1-4-marks.pdf>
- 478 26. Kurtzer JD. Denial, Delay, Diversion: Tackling Access Challenges in an Evolving Humanitarian Landscape  
479 [Internet]. Washington, D.C.; 2019. Available from: [www.csis.org](http://www.csis.org)
- 480 27. United Nations Security Council. Report of the Secretary-General on the protection of civilians in armed  
481 conflict. Vol. 34397, (S/2009/277). 2009.
- 482 28. UNOCHA. [Internet]. Syria: 2019 Humanitarian Needs Overview. 2019;(November):54. Available from:  
483 [https://www.syrialearning.org/help-library/2019-humanitarian-needs-overview-syrian-arab-](https://www.syrialearning.org/help-library/2019-humanitarian-needs-overview-syrian-arab-republic#:~:text=With%20the%20crisis%20in%20its,the%20beginning%20of%20the%20year.)  
484 [republic#:~:text=With%20the%20crisis%20in%20its,the%20beginning%20of%20the%20year.](https://www.syrialearning.org/help-library/2019-humanitarian-needs-overview-syrian-arab-republic#:~:text=With%20the%20crisis%20in%20its,the%20beginning%20of%20the%20year.)
- 485 29. Marsh HW, Kit-Tai H, Wen Z. In search of golden rules: Comment on hypothesis-testing approaches to  
486 setting cutoff values for fit indexes and dangers in overgeneralizing Hu and Bentler's (1999) findings.  
487 *Struct Equ Model A Multidiscip J*. 2004;11(3):320–41.
- 488 30. Guha-Sapir D, Checchi F. Science and politics of disaster death tolls. *BMJ* [Internet].  
489 2018;362(September):1–2. Available from: <http://dx.doi.org/doi:10.1136/bmj.k4005>
- 490 31. Heudtlass P, Speybroeck N, Guha-Sapir D. Monitoring Mortality in Forced Migrants—Can Bayesian  
491 Methods Help Us to Do Better with the (Little) Data We Have? *PLoS Med*. 2015;12(10):1–7.
- 492 32. UN OCHA. World Humanitarian Data and Trends 2018 [Internet]. United Nations. 2018. Available from:  
493 [https://www.unocha.org/sites/unocha/files/WHDT2018\\_web\\_final\\_spread.pdf](https://www.unocha.org/sites/unocha/files/WHDT2018_web_final_spread.pdf)
- 494 33. INFORM Severity Index [Internet]. Available from: [https://data.humdata.org/dataset/inform-global-crisis-](https://data.humdata.org/dataset/inform-global-crisis-severity-index)  
495 [severity-index](https://data.humdata.org/dataset/inform-global-crisis-severity-index)
- 496 34. Harris CW, Knoell DM. The oblique solution in factor analysis. *J Educ Psychol*. 1948;39(7):385–403.

497 35. Hu L -t., Bentler PM. Cutoff criteria for fit indexes in covariance structure analysis: Conventional criteria  
498 versus new alternatives. Struct Equ Model. 1999;6(1).

499

500

**Table 1.** Global Crisis Severity Index (GCSI) pillar, which we consider latent constructs, presented alongside the indicators within each construct, definition, whether the indicator is crisis related, and if not, when the data are routinely collected. All indicators, and their references, are further described within the GCSI spreadsheet under the sheet titled “Indicator Metadata”: <https://data.humdata.org/dataset/inform-global-crisis-severity-index>.

GCSI Latent Constructs	Indicators	Definition	Type of Indicator	Frequency of Collection
Impact of the Crisis	Landmass affected - absolute	Total number of square kilometers affected by the crisis	Crisis	N/A
	Landmass affected - relative	Percent of square kilometers affected by the crisis	Crisis	N/A
	People living in the affected area - absolute	Total number of people living in the affected area	Crisis	N/A
	People living in the affected area - relative	Percent of people living in the affected area	Crisis	N/A
	People affected - absolute	Total number of people affected by the crisis	Crisis	N/A
	People affected - relative	Percent of people affected by the crisis	Crisis	N/A
	People displaced - absolute	Total number of crisis related displaced people	Crisis	N/A
	People displaced - relative	Percent of crisis related displaced people	Crisis	N/A
	*Number of people ill	Total number of crisis related ill people	Crisis	N/A
	**Number of people injured	Total number of crisis related injured people	Crisis	N/A
***Number of fatalities	Total number of crisis related fatalities	Crisis	N/A	
Complexity of the Crisis	Corruption perception index	The CPI scores and ranks countries/territories based on how corrupt a country’s public sector is perceived to be. It is a composite index, a combination of surveys and assessments of corruption, collected by a variety of reputable institutions.	Non-crisis	Yearly
	Rule of law (WGI)	Rule of law, a variable included in the Worldwide Government Indicators (WGI) captures perceptions of the extent to which agents have confidence in and abide by the rules of society, and in particular the quality of contract enforcement, property rights, the police, and the courts, as well as the likelihood of crime and violence.	Non-crisis	Yearly
	Rule of law (BTI)	The Bertelsmann Stiftung’s Transformation Index (BTI) analyzes and evaluates the quality of democracy, a market economy and political management in 129 developing and transition countries. It measures successes and setbacks on the path toward a democracy based on the rule of law and a socially responsible market economy. It also entails an evaluation of the rule of law including the separation of powers and the prosecution of office abuse.	Non-crisis	Every 2 years
	Freedom in the World	Freedom in the World is Freedom House’s flagship annual report, assessing the condition of political rights and civil liberties around the world. It is composed of numerical ratings and supporting descriptive texts for 195 countries.	Non-crisis	Once (in 2017)
	Total killed in all crisis	Number killed in the crisis affected area in the last three months	Crisis	N/A
	Conflict intensity	The HIIK’s annual publication Conflict Barometer describes the recent trends in global conflict developments, escalations, de-escalations, and settlements.	Non-crisis	Yearly
	Gender inequality	The Gender Inequality Index (GII) reflects gender-based disadvantages in three dimensions— reproductive health, empowerment and the labour market. The value of GII range between 0 to 1, with 0 being 0% inequality, indicating women fare equally in comparison to men and 1 being 100% inequality, indicating women fare poorly in comparison to men.	Non-crisis	Yearly

Income gini coefficient	Gini index measures the extent to which the distribution of income or consumption expenditure among individuals or households within an economy deviates from a perfectly equal distribution. A Gini index of 0 represents perfect equality, while an index of 100 implies perfect inequality.	Non-crisis	Yearly
Ethnic fractionalisation	Ethnic fractionalisation Index is calculated using a simple Herfindahl concentration index from Ethnic Power Relations (EPR) Dataset.	Non-crisis	Yearly Once (from 2004-2006)
Size of excluded ethnic groups	The Minorities at Risk (MAR) project monitors and analyzes the status and conflicts of politically-active communal groups in all countries. The focus of the MAR project has been “minorities at risk.	Non-crisis	Yearly (1981-2011)
Empowerment	This is an additive index constructed from the Foreign Movement, Domestic Movement, Freedom of Speech, Freedom of Assembly & Association, Workers’ Rights, Electoral Self-Determination, and Freedom of Religion indicators. It ranges from 0 (no government respect for these seven rights) to 14 (full government respect for these seven rights).	Non-crisis	Every 2 years
BTI - Democracy status	The Bertelsmann Stiftung’s Transformation Index (BTI) analyzes and evaluates the quality of democracy, a market economy and political management in 129 developing and transition countries. It measures successes and setbacks on the path toward a democracy based on the rule of law and a socially responsible market economy. It also entails an evaluation of the rule of law including the separation of powers and the prosecution of office abuse.	Non-crisis	N/A
Crisis affected groups	Number of different types of affected population groups, based on categories of the IASC Humanitarian profile COD 2012. The final value represents a count of types of affected group, at the lowest level of the humanitarian profile page 5 of the document.	Crisis	N/A
Impediments to entry into country (bureaucratic and administrative)	This indicator refers to the general access of international actors into the country. It refers to registration, accreditation and visa policies, provision of taxes or fees on activities or goods; policies related to import and logistics; visa or accreditation delays or denial; discretionary registration or visas by authorities, and presence of humanitarian organisations and workers in the country being allowed to operate.	Crisis	N/A
Restriction of movement (impediments to freedom of movement and/or administrative restrictions)	This indicator refers to the in-country mobility of humanitarian workers in order to reach the affected population and transport relief items. It includes presence of taxes and fines on passage of goods and people, quotas and limits on relief items in specific areas, assistance seized, agencies on hold despite being ready to intervene, checkpoints, or closure of border crossings.	Crisis	N/A
Interference into implementation of humanitarian activities	This indicator refers to factors such as conditions imposed on the type of aid, or the modality of aid delivery. It includes operational restrictions imposed by government as well as confiscation or diversion of aid.	Crisis	N/A
Violence against personnel, facilities and assets	This indicator takes into account security incidents involving humanitarian organisations. Incidents include attacks, abduction, execution, kidnapping of workers, and looting of humanitarian warehouses or humanitarian assets.	Crisis	N/A
Denial of existence of humanitarian needs or entitlements to assistance	This indicator takes into account statements that demonstrate a recognition or denial of needs of a population or the rights of minorities, and any discrepancy between the reported humanitarian needs and official statements.	Crisis	N/A
Restriction and obstruction of access to services and assistance	This indicator refers to the affected population’s perspective. It assesses whether people are prevented from reaching aid or services – through various restrictions, such as prevention of the crossing of borders to seek refuge, administrative barriers, or requirements to have specific documents. Sieges, roadblocks, curfews, and harassment are be considered.	Crisis	N/A



	Ongoing insecurity/hostilities affecting humanitarian assistance	This indicator takes into account the presence of ongoing hostilities or violence that affects humanitarian operations, leading to decisions to divert or suspend aid, or to evacuate or modify operations.	Crisis	N/A
	Presence of mines and improvised explosive devices	This indicator looks into how the presence of landmines or Unexploded Ordnance (UXOs) might hinder humanitarian access.	Crisis	N/A
	Physical constraints in the environment (obstacles related to terrain, climate, lack of infrastructure, etc.)	This indicator looks into seasonal events or weather conditions as well as preexisting infrastructure. Status of roads, bridges, and airfields are also considered, along with communications and logistical constraints such as lack of fuel or assets hampering physical accessibility to people in need.	Crisis	N/A
Conditions of the People <sup>#</sup>	Total People in Need	The total number of people in need in each crisis. The total number of people in need equals the sum of people experiencing moderate, severe, and extreme humanitarian conditions.	Crisis	N/A
	Current humanitarian conditions of total population in the affected area	The conditions and status of the people affected, including information about the distribution of severity (i.e. the number of people in each category of severity within a crisis). The humanitarian conditions severity is distributed in 5 levels, each of them is defined separately.	Crisis	N/A

\*82% observations were missing

\*\*71% observations were missing

\*\*\*27% observations were missing

<sup>#</sup> Indicators are estimated by first classifying the population into five levels of humanitarian conditions:

*Level 1: None/Minor humanitarian conditions: People are facing none or minor shortages or/and accessibility problems regarding basic services. People are able to meet basic needs, such as food, health, shelter, and wash, without having to apply irreversible coping strategies. There may be some needs but are not life-threatening.*

*Level 2: Stressed humanitarian conditions: People are facing some shortages or/and some availability and accessibility problems regarding basic services. Needs are higher but are still not life-threatening. The affected population can meet their needs by applying copying strategies. There may exist localised/targeted incidents of violence and/or human rights violations.*

*Level 3: Moderate humanitarian conditions: People are facing shortages and/or availability and accessibility problems regarding basic services which is causing discomfort and/or high level of suffering, but conditions are not life-threatening. Significant service gaps are visible, and people are marginally able to meet needs only with irreversible coping strategies. People may also face malnutrition. There may be physical and mental harm to populations. The need for humanitarian assistance is more likely.*

*Level 4: Severe humanitarian conditions: People are facing life-threatening conditions and significant shortages and/or availability and accessibility problems causing high level of suffering and irreversible damages. People face severe food consumption gaps and have started to deplete their assets or already face an extreme loss of assets. This may result in very high levels of acute malnutrition. Presence of irreversible harm as well as widespread grave violations of human rights and excess mortality. Humanitarian assistance is required.*

*Level 5: Extreme humanitarian conditions: People are facing extreme shortages or availability and accessibility problems regarding basic services. There is widespread mortality as a direct result of current condition. People may face a complete lack of food and starvation is likely. Basic needs are not being met and destitution is evident. Acute malnutrition may be widely reported. Presence of irreversible harm as well as widespread grave violations of human rights and excess mortality. Humanitarian assistance is required*

N/A: not applicable

**Table 2.** Descriptive statistics for Global Crisis Severity Index (GCSI) indicators: Mean, standard deviation, median, range, and total number of observations (n) are presented for each indicator. Indicators are highlighted to reflect GCSI latent constructs (*GCSI dataset, 2019, N=172*).

<b>GCSI Latent Constructs</b>	<b>Indicator</b>	<b>Mean (Standard Deviation)</b>	<b>Median (Range)</b>	<b>n</b>
Impact of the Crisis	Landmass affected - absolute	2.7 (1.3)	3 (1-5)	162
	Landmass affected - relative	3.6 (1.3)	4 (1-5)	162
	People living in the affected area - absolute	3.0 (1.3)	3 (1-5)	162
	People living in the affected area - relative	3.3 (1.5)	3 (1-5)	158
	People affected - absolute	2.4 (1.3)	2 (1-5)	153
	People affected - relative	2.5 (1.3)	2 (1-5)	149
	People displaced - absolute	2.6 (1.4)	3 (0-5)	133
	People displaced - relative	2.3 (1.4)	2 (0-5)	130
Complexity of the Crisis	Corruption perception	3.6 (0.5)	3.6 (1.7-4.5)	171
	Rule of law (WGI)	3.3 (0.6)	3.3 (1.6-4.8)	172
	Rule of law (BTI)	3.0 (0.8)	3.0 (0.3-4.5)	161
	Freedom in the world	3.0 (1.1)	3.1 (0.3-5.0)	172
	Total killed in all crisis	2.3 (1.5)	3 (0-5)	140
	Conflict intensity	3.5 (1.4)	3 (0-5)	172
	Gender inequality	3.3 (0.9)	3.5 (0.5-5.0)	151
	Income gini coefficient	1.9 (0.9)	2.1 (0.0-4.5)	149
	Ethnic fractionalisation	3.0 (1.4)	3.1 (0.0-5.0)	172
	Size of excluded ethnic groups	1.4 (1.6)	1 (0-5)	172
	Empowerment	2.8 (1.2)	2.6 (0.7-5.0)	168
	BTI - Democracy status	2.7 (0.8)	2.7 (0.5-4.3)	161
	Crisis affected groups	3.1 (1.4)	3 (1-5)	165
	Impediments to entry into country (bureaucratic and administrative)	0.7 (0.8)	0 (0-3)	161
	Restriction of movement (impediments to freedom of movement and/or administrative restrictions)	1.0 (1.1)	1 (0-3)	162
	Interference into implementation of humanitarian activities	0.9 (1.0)	1 (0-3)	162
	Violence against personnel, facilities and assets	0.5 (1.0)	0 (0-3)	164
	Denial of existence of humanitarian needs or entitlements to assistance	0.6 (0.9)	0 (0-3)	159
	Restriction and obstruction of access to services and assistance	1.3 (1.1)	1 (0-3)	161
	Ongoing insecurity/hostilities affecting humanitarian assistance	1.1 (1.2)	1 (0-3)	161
	Presence of mines and improvised explosive devices	1.1 (1.0)	1 (0-3)	156
	Physical constraints in the environment (obstacles related to terrain, climate, lack of infrastructure, etc.)	1.6 (1.1)	2 (0-3)	160
	Conditions of the People	Total People in Need	2.4 (1.4)	2 (0-5)
Current humanitarian conditions of total population in the affected area		3.0 (0.9)	3 (1-5)	137

**Table 3.** Exploratory Factor Analysis summary information for each factor solution identified: sums of squared loadings, proportion variance explained and cumulative variance (*GCSI dataset, 2019, N=172*).

Factors	Three-Factor Solution			Four-Factor Solution			Five-Factor Solution			Six-Factor Solution		
	Sums of Squared Loadings	Proportion Variance Explained	Cumulative Variance Explained	Sums of Squared Loadings	Proportion Variance Explained	Cumulative Variance Explained	Sums of Squared Loadings	Proportion Variance Explained	Cumulative Variance Explained	Sums of Squared Loadings	Proportion Variance Explained	Cumulative Variance Explained
Factor 1	4.76	0.15	0.15	4.55	0.14	0.14	2.49	0.08	0.08	4.6	0.14	0.14
Factor 2	3.67	0.11	0.26	3.81	0.12	0.26	4.66	0.15	0.23	2.45	0.08	0.22
Factor 3	6.56	0.20	0.46	6.58	0.21	0.47	3.37	0.11	0.34	5.57	0.18	0.4
Factor 4	-	-	-	1.97	0.06	0.53	5.96	0.19	0.53	1.84	0.06	0.46
Factor 5	-	-	-	-	-	-	1.97	0.06	0.59	3.18	0.10	0.56
Factor 6	-	-	-	-	-	-	-	-	-	2.02	0.06	0.62

**Table 4.** Global Crisis Severity Index (GCSI) Indicators factor loadings for each Exploratory Factor Analysis (EFA) factor solution. Factor loadings are only presented if greater than the absolute value of 0.3 (*GCSI dataset, 2019, N=172*).

Indicators	Three-Factor Solution			Four-Factor Solution			
	Factor 1	Factor 2	Factor 3	Factor 1	Factor 2	Factor 3	Factor 4
*Landmass affected - absolute		0.43	0.32		0.45	0.32	
Landmass affected - relative		0.86			0.86		
*People living in the affected area - absolute		0.49	0.37		0.49	0.33	
People living in the affected area - relative		0.93			0.93		
*People affected - absolute		0.51	0.38		0.53	0.35	
People affected - relative		0.74			0.75		
**People displaced - absolute			0.49			0.44	-0.41
**People displaced - relative		0.36			0.37		-0.33
Corruption perception	0.64			0.51			
*Rule of law (WGI)	0.56		0.35	0.42		0.42	0.47
Rule of law (BTI)	0.96			0.96			0.49
Freedom in the world	0.89			0.87			
Total killed in all crisis			0.72			0.73	
Conflict intensity			0.70			0.71	
Gender inequality	0.38						0.51
Income gini coefficient			-0.35			-0.31	0.41
*Ethnic fractionalisation							
*Size of excluded ethnic groups				0.34			-0.31
Empowerment	0.47			0.51			
BTI - Democracy status	0.93			0.95			
Crisis affected groups			0.54			0.54	
*Impediments to entry into country (bureaucratic and administrative)	0.36		0.35	0.46		0.31	-0.34
Restriction of movement (impediments to freedom of movement and/or administrative restrictions)			0.87			0.88	
Interference into implementation of humanitarian activities			0.67			0.65	
Violence against personnel, facilities and assets			0.57			0.58	
Denial of existence of humanitarian needs or entitlements to assistance			0.31	0.35			-0.39
Restriction and obstruction of access to services and assistance			0.80			0.79	
Ongoing insecurity/hostilities affecting humanitarian assistance			0.76			0.79	
Presence of mines and improvised explosive devices			0.62			0.64	
Physical constraints in the environment (obstacles related to terrain, climate, lack of infrastructure, etc.)	0.38						0.34
*Total People in Need		0.51	0.40		0.53	0.36	
*Current humanitarian conditions of total population in the affected area							

\*Indicator excluded from subsequent CFA models

\*\*Indicator excluded from CFA model with 4 latent constructs, but included in CFA with 3 latent constructs

**Table 5.** Fit statistics for first-order Confirmatory Factor Analysis (CFA) models: Chi-squared goodness of fit test statistic, Comparative Fit Index (CFI), Tucker-Lewis Index (TLI), and Root Mean Square Error of Approximation (RMSEA) Index (*GCSI dataset, 2019, N=172*).

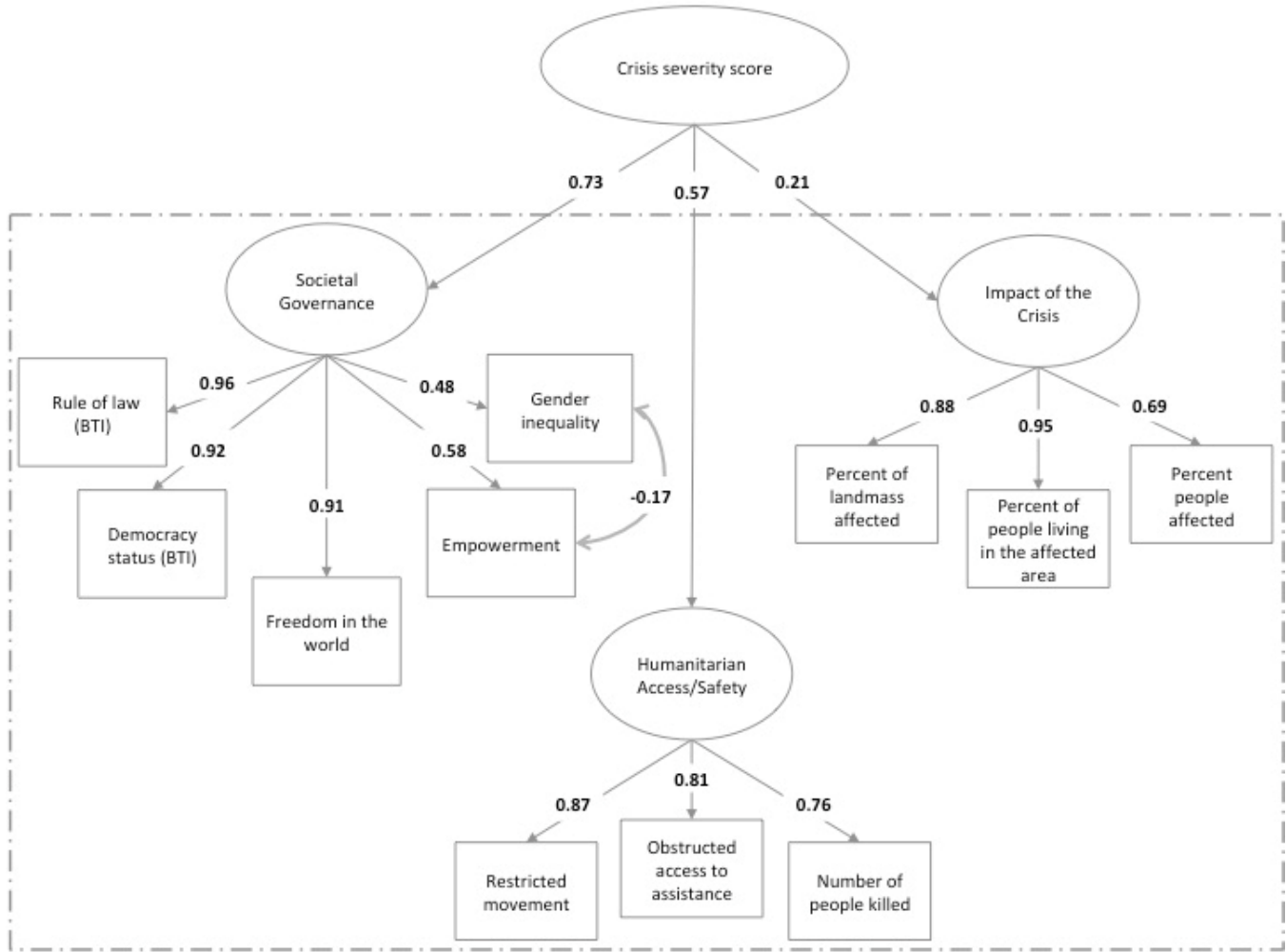
<b>Model fit statistics</b>	<b>Base model</b>	<b>Final Model</b>
Chi-squared goodness of fit (degrees of freedom)	735 (206)	107 (40)
CFI	0.77	0.94
TLI	0.75	0.92
RMSEA	0.12	0.10

**Figure 1.** A schematic of the GCSI conceptual framework for the complex crisis in Somalia (coded as *SOM001* in the GCSI database). Each box represents a data point, each oval represents the aggregation of the boxes (or other ovals) preceding it (represented by an arrow), and each circle represents the aggregation into the GCSI pillars. Shapes with dashed values represented aggregated scores of sib-indicators and bold shapes are the aggregated final scores. Panel A shows the Impact of the Crisis. Panel B shows the Complexity of the Crisis. Panel C shows the Conditions of the People. In panel C, the Condition of the population in Need Score shows values that are scaled to 1,000,000 people.



It is made available under a [CC-BY-NC-ND 4.0 International license](https://creativecommons.org/licenses/by-nc-nd/4.0/).

**Figure 2.** Second-order Confirmatory Factor Analysis (CFA), with factor loadings. The ovals reflect latent variables and the boxes reflect indicators. The dashed box contains the final first-order CFA.



**Figure 3.** The distribution of latent crisis severity scores. Figure 2A shows all crises (n=172) and Figure 2B is stratified by crisis type.

