

1 Article

2 **Follow-up study on serum cholesterol profiles in recovered COVID-19 patients**

3

4 Guiling Li^{1,*}, Li Du^{2,*}, Xiaoling Cao³, Xiuqi Wei⁴, Yao Jiang¹, Yuqi Lin⁴, Vi Nguyen³, Wenbin Tan,
5 ^{3,5,†}, Hui Wang^{6,†}

6

7 ¹Cancer Center, Union Hospital, Tongji Medical College, Huazhong University of Science and
8 Technology, Wuhan 430022, P. R. China

9 ²Division of Gastroenterology, Union Hospital, Tongji Medical College, Huazhong University of
10 Science and Technology, Wuhan, 430022, P. R. China

11 ³Department of Cell Biology and Anatomy, School of Medicine, University of South Carolina,
12 Columbia, South Carolina, USA

13 ⁴Department of Laboratory Medicine, Cancer Center, Union Hospital, Tongji Medical College,
14 Huazhong University of Science and Technology, Wuhan, 430022, P. R. China

15 ⁵Department of Biomedical Engineering, College of Engineering and Computing, University of
16 South Carolina, Columbia, South Carolina, USA

17 ⁶Department of Laboratory Medicine, Union Hospital, Tongji Medical College, Huazhong
18 University of Science and Technology, Wuhan, 430022, P. R. China

19

20 * contributed equally

21 † contributed equally

22

23 Corresponding authors:

24 Wenbin Tan, Department of Cell Biology and Anatomy, School of Medicine, and Department of
25 Biomedical Engineering, College of Engineering and Computing, University of South Carolina,
26 Columbia, South Carolina, 29209, USA. Email: wenbin.tan@uscmed.sc.edu

27 or

28 Hui Wang, Tumor Biomarker Branch, Department of Laboratory Medicine, Union Hospital,
29 Tongji Medical College, Huazhong University of Science and Technology, Wuhan, 430022, P.
30 R. China. Email: m18971574342@163.com

31

32 Word count: 3353 (figure legends excluded); References: 32; Figures: 2; Tables: 3.

33 Abstract word count: 247

34

35 **Abstract**

36 COVID-19 patients develop hypolipidemia. However, it is unknown whether lipid levels have
37 improved in recovered patients. In this study, a 3–6 month follow-up study was performed to
38 examine serum levels of laboratory values in 107 discharged COVID-19 patients (mild = 59;
39 severe/critical = 48; diagnoses on admission). 61 patients had a revisit chest CT scan. A Wilcoxon
40 signed-rank test was used to analyze changes in laboratory values. LDL-c and HDL-c levels were
41 significantly higher at follow-up than at admission in severe/critical cases ($p < 0.05$). LDL-c levels
42 were significantly higher at follow-up than at admission in mild cases ($p < 0.05$). With adjustment
43 of the factor of traditional Chinese medicine, LDL-c and HDL-c levels were significantly improved
44 at follow-up than at admission in severe/critical cases ($p < 0.05$). Increases in HDL-c significantly
45 correlated with increases in numbers of white blood cells ($p < 0.001$) and decreases in levels of C-
46 reactive protein ($p < 0.05$) during patients' recovery. Residue lesions were observed in CT images
47 in 69% (42 of 61) of follow-up patients. We concluded that improvements of LDL-c, HDL-c and
48 incomplete absorption of lung lesions were observed at follow-up for recovered patients,
49 indicating that a long-term recovery process could be required.

50 **Key words:** LDL-c; HDL-c; COVID-19; Cholesterol; Follow-up; CT; Residue lesions.

51 **Running title:** Cholesterol in recovered COVID-19

52 1. Introduction

53 Coronavirus disease 2019 (COVID-19), which has become a major threat to the global public
54 health system [1], is caused by severe acute respiratory syndrome coronavirus 2 (SARS-Cov-2)
55 [2]. As of October 3, 2020, more than 34.7 million COVID-19 infections and 1 million deaths have
56 been reported in 188 countries and regions. China reported 90 thousands cases and 4,739 deaths
57 which were mainly from the original epicenter, Wuhan [3]. Scientists are just beginning to
58 understand the nature of the harm caused by this disease. The SARS-Cov-2 spike protein
59 mediates the entrance of the virus into host cells via surface angiotensin-converting enzyme 2
60 (ACE2) [4, 5]. Host protease transmembrane, serine protease 2 (TMPRSS2) promotes SARS-
61 CoV-2 entry into target cells, which are thought to be host determinants for viral infection in the
62 initial stage [6]. COVID-19 patients may be asymptomatic or symptomatic. The time from
63 exposure to onset of symptoms is about 5.1 days [7]. Pathologically, almost every vital organ in
64 the body, including the lungs, heart, liver, kidneys, eyes, blood vessels, intestines, and brain, can
65 be injured by SARS-CoV-2, leading to devastating consequences [8]. Acute and diffuse lung
66 injuries cause increases in a series of serum cancer biomarkers in patients [9]. Damage to the
67 lungs can be long-term for some recovered patients; this has also been observed in surviving
68 severe acute respiratory syndrome (SARS) patients [10].

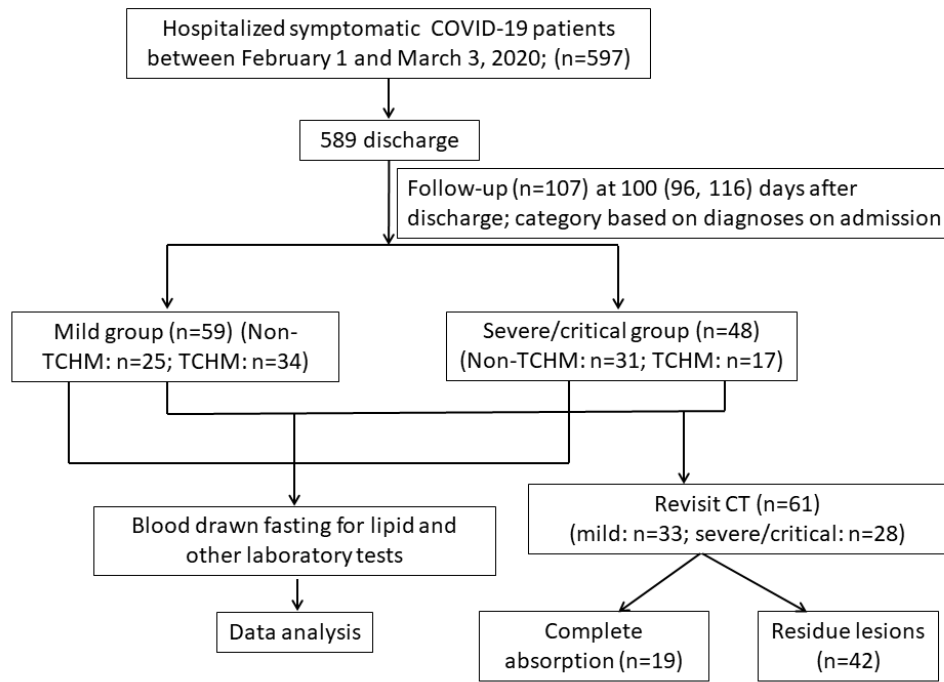
69 Patients with metabolic-associated preconditions are susceptible to SARS-CoV-2 attack and are
70 likely to experience more pronounced symptoms [11]. One pathogenic cofactor associated with
71 hypertension, obesity, diabetes mellitus, and cardiovascular disorders is hypercholesterolemia.
72 We and others have recently reported hypolipidemia in hospitalized COVID-19 patients [12-15].
73 An association between decreases in lipid levels and the severity of the symptoms in patients has
74 been revealed [12-14]. Furthermore, emerging evidence has shown that SARS-CoV-2 has a
75 direct impact on the downregulation of lipid-metabolism-related proteins and pathways, leading
76 to dyslipidemia [11, 16]. In addition, dyslipidemia associated with SARS-CoV-1 has also been

77 reported [17]. Altered lipid metabolism has been shown in recovered SARS-CoV-1 patients 12
78 years after infection [18]. These reports demonstrate that dyslipidemia is an important clinical
79 manifestation in patients with coronavirus-related diseases, perhaps reflecting one aspect of the
80 complicated evolving pathological progressions seen in patients. In this study, we performed a
81 follow-up investigation of lipid profiles and other laboratory values in COVID-19 patients from our
82 previously reported cohort [19]. We found that there were significant improvements of coagulation
83 and liver laboratory values , including D-dimer, antithrombin III (ATIII), fibrin degradation product
84 (FDP), fibrinogen (FIB), alanine aminotransferase (ALT), alkaline phosphatase (ALP), and
85 gamma-glutamyl transferase (GGT) in patients at follow-up compared to time of admission.
86 However, partial recovery of low-density lipoprotein cholesterol (LDL-c) levels and incomplete
87 absorption of lung lesions were observed at follow-up, indicating that a long-term recovery
88 process and the development of sequelae such as pulmonary fibrosis could be expected in some
89 patients.

90 **2. Results**

91 **Demographic and clinical characteristics of COVID-19 patients**

92 A total of 107 COVID-19 cases were included in this follow-up study: 59 mild and 48 severe/critical
93 cases (based on patient diagnosis at time of admission). A CONSORT flow diagram is shown in
94 Figure. 1. The age for all patients was 65 (60, 70) (median (IQR)) years. The ages for patients in
95 the two subgroups were as follows: 65 (51, 69) for mild and 66 (62, 74) for severe/critical cases
96 (Table 1). The overall follow-up time was 100 (96, 116) days after discharge. The ratios for
97 comorbidities, days until follow-up, and gender disparity among patients in each category are
98 listed in Table 1. An insignificant percentage of patients in the subgroups (about 15%–18%) used
99 cholesterol-lowering drugs (Table 1).



100

101 **Figure 1** A CONSORT flow diagram for inclusion of the COVID-19 follow-up patients in this
102 study.

103

104

105 Table 1 Demographic and clinical characteristics of follow-up COVID-19 patients

106	Characteristics	COVID-19 follow-up patients		P
107	Category (n)	Mild (59)	Severe/Critical (48)	
	Age, years	65 (51, 69)	66 (62, 74)	n.s.
	Male	28 (47%)	25 (52%)	n.s.
108	Female	31 (53%)	23 (48%)	n.s.
	Comorbidities			
109	2-DM	6 (10%)	6 (12%)	n.s.
	Hypertension	21 (36%)	23 (48%)	n.s.
110	CVD	6 (10%)	8 (16%)	n.s.
	Gastrointestinal diseases	4 (7%)	2 (4%)	n.s.
111	Follow-up (days)	93 (82, 96)	101 (96, 118)	n.s.
112	Cholesterol-lowering drugs	9 (15%)	7 (18%)	n.s.

113 Data are presented as median (IQR) or n (%); n.s. = no significance; CVD = cardiovascular
114 disease; and 2-DM = type-2 diabetes mellitus. Chi-Square test is used.

115

116 Improvements of serum cholesterol levels in recovered COVID-19 patients

117 Our previous studies have shown that serum cholesterol levels at the time of admission were
118 significantly lower in COVID-19 patients than in normal subjects [12, 13]. In this follow-up study,
119 we compared patient lipid levels at 3–6 months after discharge to those at the time of admission.
120 Both LDL-c, HDL-c and TC were significantly higher at follow-up than at the time of admission in
121 severe / critical cases (Table 2). LDL-c and TC levels were significantly higher at follow-up than
122 at the time of admission in mild patients (Table 2). Surprisingly, 11% of patients (12 of 107)
123 showed a 15% or more decrease in LDL-c levels at follow-up as compared to the time of
124 admission; these patients included 4 mild and 8 severe/critical cases. In addition, 13% of patients
125 (14 of 107) showed a 15% or more decrease in HDL-c levels at follow-up as compared to the time
126 of admission; these patients included 5 mild and 9 severe/critical cases. There were two cases in

127 which both LDL-c and HDL-c levels were 15% or more reduced at follow-up as compared to the
 128 time of admission.

129 Table 2 Main clinical laboratory values of COVID-19 follow-up patients

Laboratory values	Reference ranges	COVID-19 follow-up patients					
		Mild (n=59)			Severe/Critical (n=48)		
		Adm	Flw	<i>p</i>	Adm	Flw	<i>p</i>
LDL-c	*109 (29) mg/dL	100.5 (87.0, 113.3)	103.6 (90.5, 116.0)	0.048	96.1(74.3, 107.2)	103.6 (76.2, 123.4)	0.003
HDL-c	*52 (15) mg/dL	52.9 (46.0, 64.2)	54.5 (46.8, 63.4)	0.297	50.3 (43.7, 65.4)	55.3 (46.0, 65.7)	0.042
TC	*182 (34) mg/dL	197.9 (170.5, 223.5)	203.4 (187.2, 220.8)	0.042	192.4(151.3, 221.6)	203.2 (152.1, 246.6)	0.016
Non-HDL-c	*130 (35) mg/dL	144.2 (118.3, 160.8)	147.0 (125.3, 165.9)	0.039	135.7(102.8, 157.4)	151.8 (103.7, 182.4)	0.009
TG	*133 (99) mg/dL	165.5 (131.1, 219.6)	140.8 (108.1, 177.1)	0.001	141.7(107.6, 182.2)	143.9 (111.6, 200.6)	0.376
WBC	3.5-9.5 (×10 ⁹ /L)	5.8 (5.2, 6.8)	5.4 (4.7, 6.2)	0.002	6.3 (5.0, 8.1)	5.6 (5.0, 6.7)	0.046
LY	*2.1 (0.5) (×10 ⁹ /L)	1.5 (1.3, 1.8)	1.9 (1.5, 2.2)	< 0.001	1.6 (1.1, 1.9)	2.0 (1.5, 2.3)	< 0.001
MO	0.1 - 0.6 (×10 ⁹ /L)	0.5 (0.3, 0.6)	0.3 (0.2, 0.4)	< 0.001	0.5 (0.3, 0.7)	0.3 (0.3, 0.4)	< 0.001
D-dimer	< 0.5 mg/ml	0.5 (0.2, 0.8)	0.3 (0.2, 0.4)	< 0.001	0.7 (0.4, 1.1)	0.4 (0.3, 0.5)	< 0.001
ATIII	80%–120%	90 (81.5, 96.5)	97 (89, 102.5)	< 0.001	88 (81.2, 93.8)	96 (87, 102.8)	0.001
FDP	< 5 µg/L	1.7 (1.1, 2.5)	1.1 (1, 1.5)	< 0.001	2.7 (1.6, 3.7)	1.3 (1.0, 2.0)	< 0.001
FIB	2–4 g/L	4.0 (3.4, 5.2)	3.2 (2.7, 3.5)	< 0.001	4.6 (3.7, 5.5)	3.3 (3.0, 3.7)	< 0.001
CRP	< 4 mg/L	1.7 (0.6, 4.8)	1.4 (0.6, 2.2)	< 0.001	2.9 (1.2, 8.3)	1.6 (1.1, 2.6)	0.002
ALT	5–35 U/L	36 (22, 54)	25 (19, 32)	< 0.001	33.5(21.8, 62.2)	21 (15, 32.4)	0.013
ALP	40–150 U/L	89 (72, 104)	77 (64, 87)	< 0.001	91 (71, 107)	73 (64, 85)	< 0.001
GGT	7–32 U/L	32 (22, 51)	23 (17, 32)	< 0.001	31.5(18.7, 50.5)	23 (18, 31)	< 0.001
TBIL	5.1–19 µmol/L	11.5 (9.8, 14.6)	16.7 (12.2, 20.8)	< 0.001	11.1 (8.8, 14.3)	13.2(10.8, 15.9)	0.002
DBIL	1.7–6.8 µmol/L	3.1 (2.5, 3.6)	3.7 (3, 4.5)	< 0.001	3.2 (2.4, 4.0)	3.2 (3, 3.7)	0.215
TBA	0–10 µmol/L	4.3 (3.2, 6.9)	2.5 (1.5, 3.7)	< 0.001	4.7 (3.3, 7.7)	2.6 (1.3, 4.6)	< 0.001
TP	64–83 g/L	70.6(67.6, 74.7)	73.8(71.9, 77.2)	< 0.001	68.9(65.4, 72.3)	75.4(72.8, 79.5)	< 0.001
GLB	20–30 g/L	28.6(26.4, 31.7)	27.4(24.7, 29.7)	0.002	28.9(26.4, 32.6)	29.0(25.5, 31.8)	0.506

ALB	35–55 g/L	41.9(39.4, 44)	46.8(45.7, 49)	< 0.001	37.4 (6.4)	46.5 (2.7)	< 0.001
A/G ratio	1.5–2.5	1.5 (1.3, 1.6)	1.7 (1.5, 1.9)	< 0.001	1.3 (1.2, 1.5)	1.6 (1.5, 1.8)	< 0.001

130

131 *Data are adapted from age and gender-matched normal subjects from the city of Wuhan.[13]
132 Data are presented as mean (SD) in reference ranges or median (IQR) unless stated otherwise.
133 A Wilcoxon signed-rank test (two-sided) is used to compare variables at the time of admission
134 and at follow-up from the same subjects within groups (mild and severe/critical cases).

135 Adm = at time of admission; Flw = follow-up; ATIII, antithrombin III; FDP, fibrin degradation
136 product; FIB, fibrinogen; ALT, alanine aminotransferase; ALP, alkaline phosphatase; GGT,
137 gamma-glutamyl transferase, WBC, white blood cell; LY, lymphocyte; MO, monocyte; TC, total
138 cholesterol; TG, triglycerides; TP, total protein; ALB, albumin; GLB, globulin; TBIL, total bilirubin;
139 DBIL, direct bilirubin; CRP, C-reactive protein; TBA, total bile acid; A/G: ALB/GLB ratio.

140

141 Traditional Chinese medicine is practiced as a regular supplementary treatment to the standard
142 care of Western medicine in China. A substantial portion of patients in this cohort (34 out of 59 in
143 mild group and 17 out of 48 in severe/critical group) had taken either type of TCHMs at home
144 during the onset of their symptoms or / and after discharge. In both mild and severe/critical groups,
145 the median levels of LDL-c, HDL-c and non-HDL-c at admission were slightly but insignificantly
146 lower in non-TCHMs subgroup as compared with the TCHM subgroup using a Mann-Whitney U
147 test (table 3). TCHMs also did not cause any significant changes in the levels of LDL-c, HDL-c
148 and non-HDL-c at the time of follow-up in non-TCHM subgroup as compared with TCHM
149 subgroup (table 3, a Mann-Whitney U test). In the severe/critical group, however, LDL-c and HDL-
150 c levels in the non-TCHM subgroup were significantly elevated at the time of follow-up as
151 compared to admission, but not in the TCHM subgroup (Figure 2, table 3). Less patients in TCHM
152 subgroup took cholesterol-lowering drugs than those in non-TCHM subgroup (table 3).

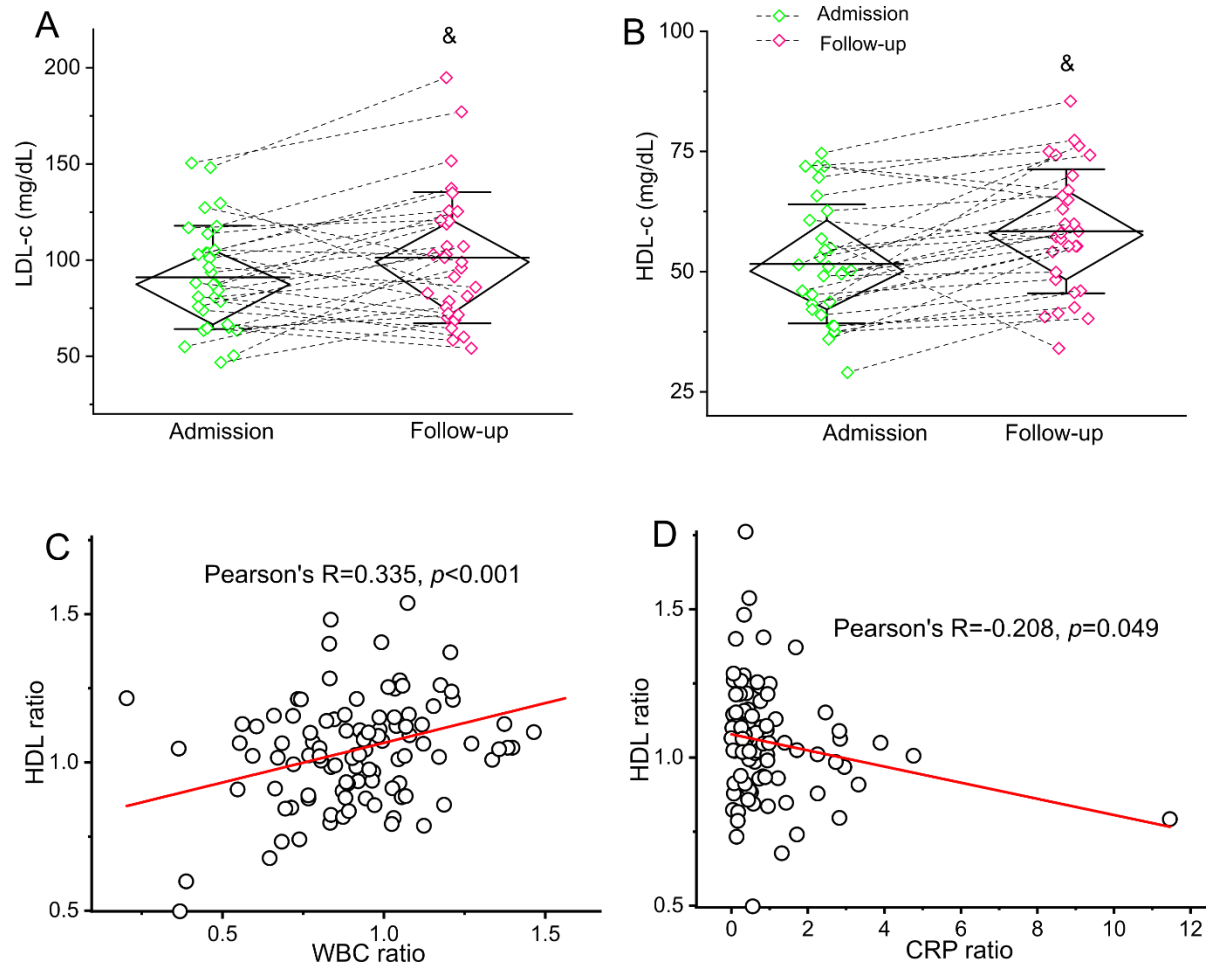
153 Table 3 Effects of TCHMs on lipid profiles of follow-up COVID-19 patients

154

Laboratory values (mg/dL)	COVID-19 follow-up patients											
	Mild group (59)						Severe/Critical group (48)					
	Non-TCHM (25)			TCHM (34)			Non-TCHM (31)			TCHM (17)		
	Adm	Flw	<i>p</i>	Adm	Flw	<i>p</i>	Adm	Flw	<i>p</i>	Adm	Flw	<i>p</i>
LDL-c	95.5 (88.5, 116.4)	105.2 (90.0, 116.6)	0.192	103.3 (84.4, 113.9)	101.9 (87.7, 118.4)	0.139	87.4 (66.5, 105.2)	99.0 (72.3, 120.6)	0.021	101.3 (79.1, 108.7)	112.9 (99.4, 129.7)	0.089
HDL-c	50.7 (44.1, 58.7)	52.9 (47.2, 61.6)	0.142	57.3 (49.3, 65.6)	57.7 (47.1, 65.5)	0.797	50.3 (42.1, 62.6)	57.2 (46.4, 66.9)	0.002	51.8 (46.2, 72.3)	51.0 (44.8, 61.7)	0.169
Non-HDL-c	140.0 (120.6, 171.5)	146.6 (126.6, 167.1)	0.452	145.0 (114.8, 159.4)	150.2 (124.2, 167.1)	0.034	120.6 (93.2, 160.1)	130.7 (95.9, 175.2)	0.099	139.2 (114.7, 154.5)	162.0 (144.2, 203.9)	0.058
Cholesterol-lowering drugs (n)	8 (32%)	8 (32%)		1 (3%)	1 (3%)	0.003*	7 (29%)	7 (29%)		0	0	0.033*

155

156 TCHMs: traditional Chinese herbal medications; Adm: admission; Flw: follow-up; non-TCHM:
 157 patients did not receive any traditional Chinese herbal medications; TCHM: patients received any
 158 types of traditional Chinese herbal medications during the illness or / and recovery. Data are
 159 presented as median (IQR) or n (%). The *p* value is calculated using a Wilcoxon signed-rank test
 160 (two-sided) to compare variables at the times of admission with follow-up from the same subjects
 161 within subgroups. In both mild and severe groups, the lipid values at the time of admission or
 162 follow-up in the non-TCHM subgroup is compared with that in the TCHM subgroup using a Mann-
 163 Whitney U test; the *p* values are not shown since no statistical significance is found. *Fisher
 164 extract test is used.



165

166 **Figure 2** Restoration of lipid levels and correlations of ratio of WBC or CRP levels and ratio of
167 HDL-c levels in recovered COVID-19 patients. Serum LDL-c (A) and HDL-c (B) levels are
168 presented from COVID-19 patients in non-TCHM severe group (n=31) at follow-up and at the time
169 of admission. Diamond boxes represent median (IQR) and whiskers represent SD in the plots.
170 Dotted lines connect data points at the time of admission and at follow-up from the same subjects.
171 A Wilcoxon signed-rank test is used to compare the variables at the time of admission and at
172 follow-up from the same subjects within subgroups. Note: "&" indicates statistically significant
173 using a Wilcoxon signed-rank test (two-sided). (C) Correlations of ratio of WBC and ratio of HDL-
174 c levels at the time of follow-up to admission in the follow-up COVID-19 patients. Increases in
175 HDL-c significantly correlate with increases in numbers of WBC. (D) Increases in HDL-c
176 significantly correlate with decreases in levels of CRP at the time of follow-up to admission in the

177 follow-up COVID-19 patients. A Pearson correlation analysis is used. non-TCHM: patients did not
178 receive any traditional Chinese herbal medications; WBC, white blood cells; CRP, C-reactive
179 protein.

180

181 **Improvements of other serum laboratory values in recovered COVID-19 patients**

182 We further compared levels of other serum laboratory values at 3–6 months after discharge to
183 those at the time of admission. Levels of numerous physiopathological markers showed
184 significant improvements in patients at follow-up as compared to the time of admission across all
185 subgroups; these laboratory values included LY, WBC, ALP, ALT, GGT, MO, CRP, and ALB,
186 coagulation markers such as D-dimer, ATIII, FDP, and FIB (Table 2).

187 **Relationships of ratios of WBC and CRP with ratios of HDL-c**

188 We performed a Pearson correlation analysis to calculate the correlation coefficient between
189 ratios of LDL-c or HDL-c and ratios of some laboratory values from follow-up to the time of
190 admission. Increases in HDL-c significantly correlated with increases in numbers of WBC
191 ($R=0.335$, $p<0.001$) and decreases in levels of CRP ($R=-0.208$, $p=0.049$) (Figure 2). In addition,
192 changes in levels of LDL-c or HDL-c both significantly correlated with changes in levels of ALP
193 (LDL-c, $R=0.195$, $p=0.047$; HDL-c, $R=0.410$, $p<0.001$), TP (LDL-c, $R=0.337$, $p=0.001$) and
194 ALB (LDL-c, $R=0.198$, $p=0.044$; HDL-c, $R=0.215$, $p=0.028$).

195

196 **Incomplete absorption of lung lesions in CT findings**

197 A total of 61 of 107 patients had a revisit CT examination at follow-up; these patients included 33
198 mild, 21 severe, and 7 critical cases. The main types of abnormalities in CT images include ground
199 glass opacities (GGO), consolidation/nodules, and shadows. GGO and large diffuse shadows

200 were two typical patterns of abnormalities found in CT images at the time of admission, suggesting
201 diffuse and acute lung inflammations. In follow-up CT images, consolidations/nodules and small
202 scattered shadows were the main types of residue lesions, suggesting improvements and
203 incomplete absorbing process during recovery. A total of 31% of patients (19 of 61) showed a
204 complete absorption of lung lesions in follow-up CT images. A total of 69% of patients (42 of 61)
205 showed incomplete absorption, that is, residue lesions, in follow-up CT images as compared with
206 CT findings at the time of admission.

207 **3. Discussion**

208 In this study, we performed a follow-up investigation of lipid profiles and other laboratory values
209 on 107 recovered COVID-19 patients at 3–6 months after discharge. Our data demonstrate that
210 levels of LDL-c and HDL-c increased significantly in severe/critical COVID-19 cases with or
211 without adjustment of the application of traditional Chinese medicine. Coagulation and liver
212 laboratory values, including D-dimer, ATIII, FDP, FIB, CRP, ALT, ALP, and GGT, decreased
213 significantly across all subgroups. Furthermore, incomplete absorption of lung lesions was
214 observed in CT images in most follow-up patients. These findings provide insight into the
215 pathological evolution of COVID-19 during recovery and into potential long-term sequelae of the
216 disease.

217 Recently, we and other investigators have reported hypolipidemia in hospitalized COVID-19
218 patients [12-15]. The decrease in lipid levels in patients with COVID-19 is associated with the
219 severity of the symptoms [12-14]. These findings demonstrate that abnormalities in lipid
220 metabolism are clinical manifestations of COVID-19 that have been underappreciated. Mild or
221 moderate liver injuries caused by viral infection may be one important factor contributing to
222 dyslipidemia in COVID-19 patients. Serum levels of ALT, ALP, and GGT were moderately
223 elevated in about half of the cohort of patients in our study at the time of admission, indicating
224 mild or moderate liver injury [13]. In this study, patient ALT, ALP, and GGT levels were significantly

225 lower at follow-up than at the time of admission, indicating improvements in liver enzyme levels
226 in patients during recovery. There are a couple of potential mechanisms involved in the role of
227 cholesterol in the pathological progression of COVID-19. Wang et al. suggests that cholesterol
228 concomitantly traffics ACE2 to viral entry sites, where SARS-CoV-2 docks in order to properly
229 exploit entry into cells [20]. Therefore, decreased cholesterol levels in the blood may indicate
230 severe loading of cholesterol in peripheral tissue and escalated SARS-CoV-2 infectivity.[20] Cao
231 et al. suggests that cholesterol may facilitate an acceleration of endothelial injuries caused by
232 SARS-CoV-2 [21]. Sorokin suggests that lowering HDL-c in COVID-19 patients may decrease the
233 anti-inflammatory and antioxidative functions of HDL-c and contribute to pulmonary inflammation
234 [15]. All of these hypotheses will lead to more and novel insights into the nature of this disease.
235 The dynamics of lipid levels in a small cohort of our longitudinal study and in two cases in other
236 reports have shown that cholesterol levels were low at the time the patients were hospitalized,
237 remained low during disease progression, and returned to baseline levels in patients who were
238 discharged [12, 14, 15]. To our surprise, a small portion of patients (12% to 14%) showed a
239 decrease in LDL-c or HDL-c levels of 15% or more at follow-up as compared to the time of
240 admission. The low lipid levels in these patients were probably due to medications or nutritional
241 supplements taken during their own recovery process at home, for example, profound and acute
242 dietary changes. It would be interesting to find out whether those patients with lower LDL-c or
243 HDL-c levels at follow-up were from socioeconomically underrepresented populations. Although
244 it is less likely, there could be a long-term sequela of lipid abnormality caused by or associated
245 with viral infection in COVID-19 patients; there is no evidence to support the notion that SARS-
246 CoV-2 causes long-term chronic infection.

247 Emerging evidence has supported coagulation as an independent mortality factor in COVID-19
248 patients. Coagulopathies have been found in the early stages of the disease [22-24] and in
249 nonsurviving patients [25]. Patients have shown elevated coagulation and cardiac biomarkers

250 such as D-dimer, fibrinogen, high-sensitivity troponin I and creatinine kinase–myocardial band [26,
251 27]. In our follow-up study, coagulation laboratory values, including D-dimer, ATIII, FDP, and FIB,
252 were significantly lower in patients at follow-up as compared to the time of admission across all
253 subgroups, indicating improvements from coagulopathies. However, we did not find significant
254 correlations between the restoration of LDL-c or HDL-c levels and decreases in levels of these
255 coagulation values; this suggests that recovery from dyslipidemia and improvements from
256 coagulopathies are probably involving different pathways at different paces.

257 Incomplete resolution of lung lesions was observed in 69% patients in the follow-up CT
258 examinations, suggesting pulmonary fibrosis as a potential long-term sequela for many COVID-
259 19 patients. SARS patients have shown persistent impairment of lung function, even years after
260 discharge [28, 29]. Pulmonary fibrosis, GGO, and pleural thickening have been reported in follow-
261 up chest radiographs in a substantial portion of patients with Middle East respiratory syndrome
262 coronavirus (MERS-CoV) [30]. Consistent with our findings, You et al. showed that 83.3% of
263 COVID-19 patients had residual CT abnormalities, including GGO and pulmonary fibrosis [31].
264 These data suggest that aberrant wound healing in COVID-19 survivors, which is evidenced by
265 GGO and residue lesion patterns, may lead to pulmonary fibrosis; larger studies are needed to
266 verify this notion.

267 There were several limitations of this study. First, less than one-fifth of the patients from our
268 original cohort participated in this study, which might cause a biased representative sample group
269 from the original cohort. Second, the sample size for follow-up critical cases was limited; this might
270 lead to an overall insignificant increase in levels of LDL-c in this subgroup. Third, many patients
271 might have been taking various medications or remedies at home for recovery, including Chinese
272 traditional medicines or nutritional supplements. In this study, we found that about 58% of patients
273 in mild group and 37% of patients in severe group had taken TCHMs during their illness or / and
274 recovery courses. Our data indicated that TCHMs might have a negative impact on the

275 improvement of lipid profiles in patients with severe symptoms. However, due to the complexity
276 of ingredients in those TCHMs, it will be very difficult to determine which factor(s) and how they
277 interfere with lipid metabolisms in some patients' recoveries in the severe group; this will need a
278 thorough investigation in future. We, however, did not find so far that TCHMs caused any
279 significant changes in the overall lipid profiles at the time of admission and follow-up crossing all
280 the subgroups. Therefore, TCHMs might have a minor effect on lipid values in our patient which
281 resulted in a negligible impact on the conclusions we drew in this study. We are aware that these
282 data and analyses only apply to this specific Chinese population. Fourth, the lipid profiles of
283 patients prior to discharge were crucial to determine the contributive factors to the decreased
284 LDL-c or HDL-c levels in a small portion of patients at follow-up as compared to admission, which
285 were lacking. Fifth, a continuous long-term follow-up is needed in order to monitor the dynamics
286 of lipid profiles and CT abnormalities during the recovery process for a large cohort of COVID-19
287 patients in order to better predict potential sequelae, such as lung fibrosis; this will be our future
288 research goal. Lastly, the characteristics of lipoproteins in our cohort was unknown. We also did
289 not know the cellular cholesterol levels in COVID-19 in this study; such information could provide
290 us insights into the molecular mechanisms underlying dyslipidemia in COVID-19. Whether and
291 how cholesterol or lipoproteins participate regulation of SARS-CoV-2 entry of host cells and viral
292 production are yet to be determined, which will our primary goal in future investigations.

293 Collectively, our data show improvements of LDL-c and HDL-c and incomplete absorption of
294 lung lesions in COVID-19 patients at a 3–6-month follow-up, indicating a long-term recovery
295 process and the development of potential sequelae such as pulmonary fibrosis.

296 **4. Methods**

297 **Study design and patients**

298 This follow-up study was carried out at the Cancer Center at the Union Hospital of Tongji Medical
299 College in Wuhan, P. R. China, and was approved by the Institutional Review Board (IRB) at the
300 Union Hospital. The requirement for written informed consent was waived by the IRB committee.
301 Our previous study included a cohort of 597 COVID-19 patients admitted to the hospital between
302 February 1 and March 3, 2020 [13]. On June 6-10 and August 17-20, 2020, we attempted phone
303 inquiries to all patients in this cohort; we successfully reached 260 patients and received informed
304 consents over the phone from 144 of them to take follow-up laboratory tests. Ultimately, a total of
305 97 patients participated the follow-up study on June 15, 22, or 29, 2020 and 10 patients
306 participated the follow-up study on September 3, 2020. In order to compare laboratory values at
307 admission with those at follow-up, the patients were grouped into the same categories assigned
308 to them in the original study, which were based on their diagnoses on admission,[13] that is, mild
309 (n = 59) and severe/critical (n = 48) cases. Briefly, clinical diagnostic criteria and guideline were
310 as the follows: (1) mild group, patients with onset of symptoms including fever, cough, fatigue,
311 headache, diarrhea, and so forth, with or without mild pneumonia; (2) severe group, patients
312 showed dyspnea, acute respiratory stress, decrease in blood oxygen saturation, lung infiltrates,
313 multiple peripheral ground-glass opacities on both lungs; and (3) critical group, patients presented
314 respiratory or multiple organ failure and septic shock [13]. A revisit CT scan was performed on a
315 total of 61 patients as their standard cares of follow-up examination which was covered by their
316 health insurance providers. A CONSORT flow diagram is shown in Fig. 1.

317 Many patients were prescribed traditional Chinese herbal medications (TCHM) by their local
318 healthcare workers as a standard supplementary treatment of COVID-19 in Wuhan. Two typical
319 TCHMs were widely given to patients with mild symptoms or at the onset of symptoms or/and
320 after discharge from hospitals for one or two weeks according to Chinese Center for Disease
321 Control (CDC) guidelines. The herbal ingredients for the first TCHM were as follows: bupleurum
322 chinense, astragalus, coix lacryma-jobi, atractylodes lancea, ophiopogon japonicus, glehnia

323 littoralis, licorice, honeysuckle, bombyx batryticatus, periostracum cicada, rhubarb, and Curcuma
324 longa. The herbal ingredients for the second TCHM were as follows: astragalus, atractylodes
325 macrocephala, divaricate saposhniovia root, cyrtomium fortunei, honeysuckle, eupatorium fortune,
326 and Chenpi. In order to adjust the factor of THCM for a further analysis, we categorized patients
327 into non-TCHM or TCHM subgroup to assess the potential effect of these THCMs on patients'
328 lipid profiles.

329 **Clinical laboratory tests and CT image acquisition**

330 White blood cell (WBC), lymphocyte (LY), and monocyte (MO) counts were performed on a
331 Beckman LH750 analyzer using the manufacturer's reagents (Beckman Coulter, Brea, California,
332 USA). A Beckman AU5800 chemistry analyzer (Beckman Coulter, Brea, CA, USA) was used for
333 tests for the following laboratory values: ALT, ALP, GGT, LDL-c, high-density lipoprotein
334 cholesterol (HDL-c), total cholesterol (TC), triglycerides (TG), total protein (TP), albumin (ALB),
335 globulin (GLB), total bilirubin (TBIL), direct bilirubin (DBIL), and total bile acid (TBA). LDL-c, HDL-
336 c, and TC were determined with standard homogeneous assays from Beckman Coulter (Catalog
337 Nos. OSR6283, OSR6587, and OSR6616). D-dimer, ATIII, FDP, and FIB were tested on a Stago
338 STAR analyzer using the manufacturer's reagents (Stago, Parsippany, New Jersey, USA). C-
339 reactive protein (CRP) was determined using a BC-5390 analyzer (Mindray, Shenzhen,
340 Guangzhou, P. R. China). The clinical laboratory data included in this study were from blood
341 samples drawn fasting on the morning of the day of follow-up, a standard time and procedure of
342 blood drawn for laboratory tests in our hospital including blood sample collections at admission in
343 our previous study.[13] Electronic data from the time of the patients' hospitalization, including
344 demographic information, clinical symptoms and diagnosis, laboratory tests, and treatment data,
345 were also extracted for comparison.

346 CT scanners (GE LightSpeed 16, GE VCT LightSpeed 64 from GE Healthcare, Chicago, Illinois,
347 USA) were used to take chest CT scans with the following parameters: tube voltage = 120 kVp;

348 current intelligent control = 30–300 mA; and slice thickness/interval = 0.6–1.5 mm. The following
349 typical abnormal patterns for viral pneumonia were reported in COVID-19 CT images:[32] ground
350 glass opacities (GGO), consolidation/nodules, and shadows.

351

352 **Statistical analysis**

353 Statistical analyses were performed with the statistical software SPSS (IBM, Armonk, New York,
354 USA). Data are presented as mean (SD) or median (interquartile range, IQR). A Wilcoxon signed-
355 rank test (two-sided) was used to compare patient laboratory values at admission and follow-up.
356 Mann-Whitney U test was used to compare differences between two groups. A Pearson
357 correlation analysis was used to calculate correlation coefficient. *P* values of $p < 0.05$ were
358 considered as statistically significant.

359 **Author contributions:**

360 GL, LD, HW, and WT supervised and designed the study. GL, LD, XW, YJ, YL, and HW
361 performed the tests and collected the data. XC, VG, and WT performed data analysis and
362 interpretation. WT wrote the manuscript.

363 **Funding:**

364 This study was supported by the Health and Family Planning Commission of Hubei Province
365 (Grant No. WJ2019M158 to HW).

366 CONFLICT OF INTEREST: The authors do not have any professional and financial affiliations that
367 may be perceived to have biased the presentation.

368 PRIOR PUBLICATION: None of the material in this manuscript has been published or is under
369 consideration for publication elsewhere, including the Internet and conferences.

370

371 References

- 372 1. Wu Z, McGoogan JM. Characteristics of and important lessons from the coronavirus disease
373 2019 (covid-19) outbreak in china: Summary of a report of 72314 cases from the chinese center
374 for disease control and prevention. *Jama* **2020**.10.1001/jama.2020.2648; 2762130.
- 375 2. Xu X, Chen P, Wang J, Feng J, Zhou H, Li X, Zhong W, Hao P. Evolution of the novel coronavirus
376 from the ongoing wuhan outbreak and modeling of its spike protein for risk of human
377 transmission. *Sci China Life Sci* **2020**;63:457-460.10.1007/s11427-020-1637-5.
- 378 3. Covid-19 dashboard by the center for systems science and engineering (csse) at johns hopkins
379 university (jhu). 2020
- 380 4. Lu R, Zhao X, Li J, Niu P, Yang B, Wu H, Wang W, Song H, Huang B, Zhu N, et al. Genomic
381 characterisation and epidemiology of 2019 novel coronavirus: Implications for virus origins and
382 receptor binding. *Lancet* **2020**;395:565-574.S0140-6736(20)30251-8.
- 383 5. Wan Y, Shang J, Graham R, Baric RS, Li F. Receptor recognition by novel coronavirus from
384 wuhan: An analysis based on decade-long structural studies of sars. *J Virol*
385 **2020**.10.1128/JVI.00127-20.
- 386 6. Ziegler CGK, Allon SJ, Nyquist SK, Mbanjo IM, Miao VN, Tzouanas CN, Cao Y, Yousif AS, Bals J,
387 Hauser BM, et al. Sars-cov-2 receptor ace2 is an interferon-stimulated gene in human airway
388 epithelial cells and is detected in specific cell subsets across tissues. *Cell*
389 **2020**.10.1016/j.cell.2020.04.035.
- 390 7. Lauer SA, Grantz KH, Bi Q, Jones FK, Zheng Q, Meredith HR, Azman AS, Reich NG, Lessler J. The
391 incubation period of coronavirus disease 2019 (covid-19) from publicly reported confirmed
392 cases: Estimation and application. *Ann Intern Med* **2020**;172:577-582.10.7326/m20-0504.
- 393 8. Cao WJ, Wang TT, Gao YF, Wang YQ, Bao T, Zou GZ. Serum lipid metabolic derangement is
394 associated with disease progression during chronic hbv infection. *Clin Lab*
395 **2019**;65.10.7754/Clin.Lab.2019.190525.
- 396 9. Wei X, Su J, Yang K, Wei J, Wan H, Cao X, Tan W, Wang H. Elevations of serum cancer biomarkers
397 correlate with severity of covid-19. *J Med Virol* **2020**.10.1002/jmv.25957.
- 398 10. Zhang P, Li J, Liu H, Han N, Ju J, Kou Y, Chen L, Jiang M, Pan F, Zheng Y, et al. Long-term bone and
399 lung consequences associated with hospital-acquired severe acute respiratory syndrome: A 15-
400 year follow-up from a prospective cohort study. *Bone Res* **2020**;8:8.10.1038/s41413-020-0084-5.
- 401 11. Richardson S, Hirsch JS, Narasimhan M, Crawford JM, McGinn T, Davidson KW, Barnaby DP,
402 Becker LB, Chelico JD, Cohen SL, et al. Presenting characteristics, comorbidities, and outcomes
403 among 5700 patients hospitalized with covid-19 in the new york city area. *Jama*
404 **2020**.10.1001/jama.2020.6775.
- 405 12. Fan J, Wang H, Ye G, Cao X, Xu X, Tan W, Zhang Y. Low-density lipoprotein is a potential
406 predictor of poor prognosis in patients with coronavirus disease 2019. *Metabolism*
407 **2020**:154243.10.1016/j.metabol.2020.154243.
- 408 13. Wei X, Zeng W, Su J, Wan H, Yu X, Cao X, Tan W, Wang H. Hypolipidemia is associated with the
409 severity of covid-19. *J Clin Lipidol* **2020**.doi: 10.1016/j.jacl.2020.04.008.
- 410 14. Hu X, Chen D, Wu L, He G, Ye W. Declined serum high density lipoprotein cholesterol is
411 associated with the severity of covid-19 infection. *Clin Chim Acta*
412 **2020**.10.1016/j.cca.2020.07.015.
- 413 15. Sorokin AV, Karathanasis SK, Yang ZH, Freeman L, Kotani K, Remaley AT. Covid-19-associated
414 dyslipidemia: Implications for mechanism of impaired resolution and novel therapeutic
415 approaches. *Faseb J* **2020**.10.1096/fj.202001451.

- 416 16. Auwaerter PG. Coronavirus covid-19 (sars-cov-2), johns hopkins abx guide. *Johns Hopkins ABX*
417 *Guide*. 2020
- 418 17. Song SZ, Liu HY, Shen H, Yuan B, Dong ZN, Jia XW, Tian YP. [comparison of serum biochemical
419 features between sars and other viral pneumonias]. *Zhongguo Wei Zhong Bing Ji Jiu Yi Xue*
420 *(Chinese critical care medicine)* **2004**;16:664-666.
- 421 18. Wu Q, Zhou L, Sun X, Yan Z, Hu C, Wu J, Xu L, Li X, Liu H, Yin P, et al. Altered lipid metabolism in
422 recovered sars patients twelve years after infection. *Sci Rep* **2017**;7:9110.10.1038/s41598-017-
423 09536-z.
- 424 19. Wongjitrat C, Sukwit S, Chuenchitra T, Seangjaruk P, Rojanasang P, Romputtan P, Srisurapanon
425 S. Ctl4 and its ligands on the surface of t- and b-lymphocyte subsets in chronic hepatitis b virus
426 infection. *J Med Assoc Thai* **2013**;96 Suppl 1:S54-59.
- 427 20. Wang H, Yuan Z, Pavel MA, Hansen SB. The role of high cholesterol in age-related covid19
428 lethality. *bioRxiv* **2020**.10.1101/2020.05.09.086249.
- 429 21. Cao X, Yin R, Albrecht H, Fan D, Tan W. Cholesterol: A new game player accelerating
430 vasculopathy caused by sars-cov-2? *Am J Physiol Endocrinol Metab* **2020**;319:E197-
431 E202.10.1152/ajpendo.00255.2020.
- 432 22. Lodigiani C, Iapichino G, Carenzo L, Cecconi M, Ferrazzi P, Sebastian T, Kucher N, Studt JD, Sacco
433 C, Alexia B, et al. Venous and arterial thromboembolic complications in covid-19 patients
434 admitted to an academic hospital in milan, italy. *Thromb Res* **2020**;191:9-
435 14.10.1016/j.thromres.2020.04.024.
- 436 23. Klok FA, Kruip M, van der Meer NJM, Arbous MS, Gommers D, Kant KM, Kaptein FHJ, van
437 Paassen J, Stals MAM, Huisman MV, et al. Incidence of thrombotic complications in critically ill
438 icu patients with covid-19. *Thromb Res* **2020**.10.1016/j.thromres.2020.04.013.
- 439 24. Helms J, Tacquard C, Severac F, Leonard-Lorant I, Ohana M, Delabranche X, Merdji H, Clere-Jehl
440 R, Schenck M, Fagot Gandet F, et al. High risk of thrombosis in patients with severe sars-cov-2
441 infection: A multicenter prospective cohort study. *Intensive Care Med* **2020**:1-
442 10.10.1007/s00134-020-06062-x.
- 443 25. Tang N, Li D, Wang X, Sun Z. Abnormal coagulation parameters are associated with poor
444 prognosis in patients with novel coronavirus pneumonia. *J Thromb Haemost* **2020**;18:844-
445 847.10.1111/jth.14768.
- 446 26. Shi S, Qin M, Shen B, Cai Y, Liu T, Yang F, Gong W, Liu X, Liang J, Zhao Q, et al. Association of
447 cardiac injury with mortality in hospitalized patients with covid-19 in wuhan, china. *JAMA*
448 *Cardiol* **2020**.10.1001/jamacardio.2020.0950.
- 449 27. Gao Y, Li T, Han M, Li X, Wu D, Xu Y, Zhu Y, Liu Y, Wang X, Wang L. Diagnostic utility of clinical
450 laboratory data determinations for patients with the severe covid-19. *J Med Virol*
451 **2020**.10.1002/jmv.25770.
- 452 28. Xie L, Liu Y, Xiao Y, Tian Q, Fan B, Zhao H, Chen W. Follow-up study on pulmonary function and
453 lung radiographic changes in rehabilitating severe acute respiratory syndrome patients after
454 discharge. *Chest* **2005**;127:2119-2124.10.1378/chest.127.6.2119.
- 455 29. Hui DS, Wong KT, Ko FW, Tam LS, Chan DP, Woo J, Sung JJ. The 1-year impact of severe acute
456 respiratory syndrome on pulmonary function, exercise capacity, and quality of life in a cohort of
457 survivors. *Chest* **2005**;128:2247-2261.10.1378/chest.128.4.2247.
- 458 30. Das KM, Lee EY, Singh R, Enani MA, Al Dossari K, Van Gorkom K, Larsson SG, Langer RD. Follow-
459 up chest radiographic findings in patients with mers-cov after recovery. *Indian J Radiol Imaging*
460 **2017**;27:342-349.10.4103/ijri.IJRI_469_16.
- 461 31. You J, Zhang L, Ni-Jia-Ti MY, Zhang J, Hu F, Chen L, Dong Y, Yang K, Zhang B, Zhang S. Anormal
462 pulmonary function and residual ct abnormalities in rehabilitating covid-19 patients after
463 discharge. *J Infect* **2020**.10.1016/j.jinf.2020.06.003.

- 464 32. Shi H, Han X, Jiang N, Cao Y, Alwalid O, Gu J, Fan Y, Zheng C. Radiological findings from 81
465 patients with covid-19 pneumonia in wuhan, china: A descriptive study. *Lancet Infect Dis*
466 **2020**.10.1016/S1473-3099(20)30086-4.

467