

A multi-omics study of circulating phospholipid markers of blood pressure

Jun Liu^{1,2*}, Paul S. de Vries^{1,3*}, Fabiola Del Greco M.⁴, Åsa Johansson⁵, Katharina E. Schraut^{6,7},
Caroline Hayward⁸, Ko Willems van Dijk^{9,10}, Oscar. H. Franco^{1,11}, Andrew A. Hicks⁴, Veronique
Vitart⁸, Igor Rudan⁷, Harry Campbell⁷, Ozren Polašek¹², Peter P. Pramstaller⁴, James F. Wilson^{7,8},
Ulf Gyllensten⁵, Cornelia M. van Duijn^{1,2}, Abbas Dehghan^{1,13§}, and Ayşe Demirkan^{1,14,15§}.

*These authors contributed equally to this work.

§ These authors jointly supervised this work.

Keywords:

blood pressure, hypertension, phospholipids, multi-omics, metabolomics

Running title:

circulating phospholipid markers of blood pressure

Corresponding author:

Ayşe Demirkan

Department of Epidemiology, Erasmus MC, University Medical Center, Rotterdam, the Netherlands

Email address: a.demirkan@surrey.ac.uk

Materials and Correspondence:

Correspondence and requests for materials should be addressed to Jun Liu (email: jun.liu@ndph.ox.ac.uk) or to Ayşe Demirkan (email: a.demirkan@surrey.ac.uk).

Affiliations:

1. Department of Epidemiology, Erasmus MC, University Medical Center, Rotterdam, the Netherlands.
2. Nuffield Department of Population Health, University of Oxford, Oxford, UK.
3. Human Genetics Center, Department of Epidemiology, Human Genetics, and Environmental Sciences, School of Public Health, University of Texas Health Science Center at Houston, Houston, US.
4. Institute for Biomedicine, Eurac Research, Affiliated Institute of the University of Lübeck, Bolzano, Italy.
5. Department of Immunology, Genetics and Pathology, Science for Life Laboratory, Uppsala University, Uppsala, Sweden.

6. Centre for Cardiovascular Sciences, Queen's Medical Research Institute, University of Edinburgh, Edinburgh, Scotland, UK.
7. Centre for Global Health Research, Usher Institute, University of Edinburgh, Edinburgh, Scotland, UK.
8. Medical Research Council Human Genetics Unit, Institute of Genetics and Molecular Medicine, University of Edinburgh, Western General Hospital, Edinburgh, Scotland, UK.
9. Department of Human Genetics, Leiden University Medical Centre, Leiden, the Netherlands.
10. Department of Internal Medicine, Division of Endocrinology, Leiden University Medical Center, Leiden, the Netherland.
11. Institute of Social and Preventive Medicine (ISPM), University of Bern, Bern, Switzerland.
12. Department of Public Health, University of Split, School of Medicine, Split, Croatia.
13. Department of Epidemiology and Biostatistics, MRC-PHE Centre for Environment & Health, School of Public Health, Imperial College London, UK.
14. Section of Statistical Multi-omics, Department of Clinical and Experimental research, University of Surrey, Guildford, Surrey, UK.
15. Department of Genetics, University Medical Center Groningen, Groningen, the Netherlands.

1 **Abstract**

2 *Background* High-throughput techniques allow us to measure a wide-range of phospholipids
3 which can provide insight into the mechanisms of hypertension. We aimed to conduct an in-
4 depth multi-omics study of various phospholipids with systolic blood pressure (SBP) and diastolic
5 blood pressure (DBP).

6 *Methods* The associations of blood pressure and 151 plasma phospholipids measured by
7 electrospray ionization tandem mass spectrometry were performed by linear regression in five
8 European cohorts (n = 2,786 in discovery and n = 1,185 in replication). We further explored the
9 blood pressure-related phospholipids in Erasmus Rucphen Family (ERF) study by associating them
10 with multiple cardiometabolic traits (linear regression) and predicting incident hypertension (Cox
11 regression). Mendelian Randomization (MR) and phenome-wide association study (pheWAS)
12 were also explored to further investigate these association results.

13 *Results* We identified six phosphatidylethanolamines (PE 38:3, PE 38:4, PE 38:6, PE 40:4, PE 40:5
14 and PE 40:6) and two phosphatidylcholines (PC 32:1 and PC 40:5) which together predicted
15 incident hypertension with an area under the curve (AUC) of 0.61. The identified eight
16 phospholipids are strongly associated with triglycerides, obesity related traits (e.g. waist, waist-
17 hip ratio, total fat percentage, BMI, lipid-lowering medication, and leptin), diabetes related traits
18 (e.g. glucose, HOMA-IR and insulin) and prevalent type 2 diabetes. The genetic determinants of
19 these phospholipids also associated with many lipoproteins, heart rate, pulse rate and blood cell
20 counts. No significant association was identified by bi-directional MR approach.

21 *Conclusion* We identified eight blood pressure-related circulating phospholipids that have a
22 predictive value for incident hypertension. Our cross-omics analyses show that phospholipid
23 metabolites in the circulation may yield insight into blood pressure regulation and raise a number
24 of testable hypothesis for future research.

25

26 Introduction

27 Long-term high blood pressure, of which 90-95% essential hypertension, is a major risk
28 factor for cardiovascular diseases, e.g. coronary artery disease, stroke, heart failure, atrial
29 fibrillation, etc¹. Pervious study showed that the patients with essential hypertension have
30 abnormal sodium-lithium counter transport across the red cell membrane, and that the level of
31 transport is heritable². Phosphatidylcholines (PC), phosphatidylethanolamines (PE),
32 lysophosphatidylcholines (LPC), PE-based plasmalogens (PLPE), ceramides (CERs) and
33 sphingomyelin (SPM) are groups of phospholipids that have a key function in the bilayer of
34 (blood) cell membranes³. Although changes of membrane phospholipids in essential
35 hypertension have been recognized and studied for a long time⁴, these previous studies either
36 focused on animal models or overall phospholipid groups with limited resolution in the
37 measurement. More detailed characterization of phospholipids in relation to hypertension at the
38 population level is lacking.

39 In recent decades, high-throughput mass spectrometry (MS) has offered the opportunity
40 to determine phospholipids on the chemical molecular level with high resolution at a low price.
41 Thus, phospholipid panels with detailed characterisation are increasingly adopted in large
42 epidemiological studies⁵⁻¹¹. Despite these developments, the number of studies on the role of
43 phospholipid profiles in hypertension and blood pressure is still limited. Very few studies of blood
44 pressure and hypertension have investigated phospholipid profile in high resolution¹²⁻¹⁵. The
45 study by Kulkarni et al. examined 319 (phospho)lipids in 1,192 Mexican-Americans¹² and found
46 that diacylglycerols (DG) in general and DG 16:0/22:5 and DG 16:0/22:6 in particular are
47 significantly associated with systolic (SBP), diastolic (DBP) and mean arterial pressures as well as

48 the risk of incident hypertension¹². Stefan et al studied 135 cases and 981 non-cases of incident
49 hypertension in a European study and identified four phospholipids and two amino acids which
50 could improve the predictive performance of hypertension in addition to the known risk
51 markers¹⁵. To our knowledge, no large-scale epidemiological study of blood pressure and/or
52 hypertension with high-throughput measured phospholipids has been performed with
53 replication in an independent study or has studied in detail the mechanism of the associations.

54 The aim of this study was to conduct an in-depth multi-omics study of the associations
55 and causality of the associations of phospholipids with SBP and DBP, which are the diagnostic
56 variables of hypertension, through metabolomics, genomics and phenomics. To this end, we
57 investigated the association of blood pressure and 151 quantified phospholipids including 24
58 SPMs, 9 CERs, 57 PCs, 15 LPCs, 27 PEs, and 19 PLPEs, in 3,971 individuals from five European
59 populations. Using Mendelian Randomization (MR), we further investigated the causality in these
60 relationships. The potential genetic pleiotropy between phospholipids and blood pressure was
61 also explored.

62 **Methods**

63 **Population description**

64 This study was conducted using five populations throughout Europe. The individuals with
65 both blood pressure and phospholipid measure available were included: (1) the CROATIA-Vis
66 study conducted on the island of Vis, Croatia (n = 710)¹⁶, (2) the Erasmus Rucphen Family (ERF)
67 study, conducted in the Netherlands (n = 717)¹⁷, (3) the Northern Swedish Population Health
68 Survey (NSPHS) in Norrbotten, Sweden (n = 678)¹⁸, (4) the Orkney Complex Disease Study

69 (ORCADES) in Scotland (n = 681)¹⁹, and finally (5) the MICROS study from the South Tyrol region
70 in Italy (n = 1,185)²⁰ which was included for replication. Fasting blood samples were collected for
71 the biochemical measurements. All studies were approved by the local ethics committees and all
72 participants gave their informed consent in writing.

73 The association tests of phospholipids and blood pressure were performed on the same
74 baseline data, for each of the five studies. The predictive analysis was performed in ERF study in
75 which we collected follow-up data from March 2015 to May 2016 (9-14 years after baseline visit).
76 During the follow-up, a total of 572 participants' records from the 717 individuals included in the
77 baseline analysis were scanned for common diseases in general practitioner's databases.

78 **Phospholipids measurements**

79 As part of the European Special Populations Research Network (EUROSPAN) project, the
80 absolute concentrations (μM) of 151 lipid traits in plasma were centrally measured by
81 electrospray ionization tandem mass spectrometry (ESIMS/MS), including 24 SPMs, 9 CERs, 57
82 PCs, 15 LPCs, 27 PEs and 19 PLPEs. The methods used have been validated and described
83 previously^{21,22}. For each lipid molecule, we adopted the naming system where lipid side chain
84 composition is abbreviated as x:y, where x denotes the number of carbons in the side chain and
85 y the number of double bonds. For example, PC 34:4 denotes an acyl-acyl PC with 34 carbons in
86 the two fatty acid side chains containing four double bonds.

87 **Covariates**

88 Supplementary Table 1 describes how SBP and DBP, T2D status, total cholesterol (TC),
89 HDL-C, lipid-lowering medication usage, body mass index (BMI) and antihypertensive medication
90 are measured or defined in the cohorts. In all cohorts, blood pressure was measured by
91 automated reading in the sitting position after a rest. The medication information was collected
92 during the personal interview. For the additional analysis in ERF only (described below), we
93 imputed the missing values by multiple imputation in R package ‘mice’ and followed the Rubin’s
94 rules²³.

95 **Discovery and replication analysis**

96 Lipids were natural log-transformed and standardized (mean-centered and divided by
97 their standard deviation). We corrected blood pressure levels for antihypertensive medication
98 use by adding 15 mmHg to the SBP and 10 mmHg to the DBP of users of antihypertensive
99 medication²⁴⁻²⁸. As all of the five cohorts included closely related individuals, family relationship
100 based on the genotype was adjusted for in the analysis by extracting polygenic residuals for the
101 phenotypic traits, by using the polygenic option in GenABEL package in R²⁹.

102 In each study, we used linear regression to examine the association between each of the
103 phospholipids and blood pressure individually. Blood pressure variables were used as dependent
104 variables and phospholipids were used as independent variables. We performed a discovery
105 analysis in CROATIA-Vis, ERF, NSPHS, and ORCADES, adjusting for age and sex (model 1). Results
106 from the four discovery populations were meta-analyzed with inverse-variance weighted fixed-
107 effects model using the METAL software³⁰. To correct for multiple testing, we used Bonferroni
108 correction using the number of 70 independent components extracted from the 151 directly

109 measured phospholipids (P-value < 7.1×10^{-4} , 0.05/70). Matrix Spectral Decomposition was
110 separately used to calculate the number of independent equivalents³¹ in each of the four
111 discovery studies. Bonferroni correction was done for 70 tests which was the highest number
112 obtained in CROATIA-Vis. We did not correct for the number of blood pressure variables as SBP
113 and DBP are highly correlated (R = 0.65, P-value < 2.2×10^{-16} in ERF, n = 2,802).

114 We replicated our findings in MICROS (n = 1,185) using the same statistical framework as
115 in the discovery analysis and using a Bonferroni correction for the independent number of tested
116 associations, i.e., equivalents of the significant phospholipids.

117 In a combination of all five cohorts, we examined a further model (model 2) to assess the
118 impact of potential confounders and mediators by additionally adjusting for BMI, HDL-C, TC, lipid-
119 lowering medication and type 2 diabetes (T2D) status. We checked the pairwise Pearson's
120 correlation matrices of the blood pressure related phospholipids in ERF adjusting for age, sex and
121 family relationships.

122 **Association with hypertension and cardiometabolic traits**

123 The phospholipids significantly associated with SBP or DBP were tested for the association
124 with the occurrence of hypertension during the follow-up in ERF. The incident cases were defined
125 as the participants free of hypertension at baseline who were diagnosed with hypertension at
126 follow-up by general practitioners. Time-to-event was defined as the time from the enrollment
127 date at baseline to either the onset date of disease, date of death, date of censoring (moving
128 away) or date of follow-up collection. Cox proportional regression analysis was used to evaluate
129 the individual effect of phospholipids considering of the follow-up time (time-to-event). To

130 determine the joint effect of the phospholipids on the discrimination of future hypertension
131 patients, we calculated the area under the receiver operator characteristics (ROC) curve (AUC).
132 We further determined whether the addition of the listed phospholipids increase the AUC value
133 of the factors in the Framingham risk score for hypertension which includes age, sex, SBP, DBP,
134 BMI, cigarette smoking and parental hypertension (Framingham model)³². Integrated
135 Discrimination Improvement test (IDI) and continuous Net Reclassification Improvement test
136 (NRI) were performed to compare different joint models.

137 In ERF, we further examined the association of these identified phospholipids with known
138 cardiometabolic traits, including adiponectin, albumin, alcohol consumption, anti-diabetic and
139 anti-hypertensive medications, BMI, creatinine, C-reactive protein (CRP), glucose, HDL-C, insulin,
140 intima-media thickness, LDL-cholesterol, heart rate, homeostatic model assessment-insulin
141 resistance (HOMA-IR), leptin, lipid-lowering medication, metabolic syndrome, plaque score,
142 pulse wave velocity (PWV), resistin, smoking status, TC, total fat percentage, triglycerides, T2D,
143 waist circumference and waist-to-hip ratio. The description and measurement methods of the
144 above mentioned cardiometabolic traits can be found in our previous reports³³⁻³⁸. The
145 distributions of adiponectin, insulin, leptin, triglycerides, CRP, HOMA-IR and resistin are skewed
146 and therefore were log-transformed before performing the analysis. We used the standardized
147 residuals of natural-log-transformed phospholipid levels as the dependent variable, adjusted for
148 age, sex and family relationship. A hierarchical clustering approach was used to cluster the
149 cardiometabolic traits³⁹. We estimated the false discovery rate (FDR < 0.05) by Benjamini &
150 Hochberg method considering of the gathering of categorical and continuous variables.

151 **Mendelian Randomization and phenome-wide association study**

152 MR is a statistical method which uses the effect of genetic variants determining an
153 exposure and test its association with the outcome under study, based on the assumption that
154 the genetic variant is inherited independent of the confounding variables⁴⁰. We performed a two-
155 sample bi-directional MR of the 11 significant associations of phospholipids and SBP or DBP. We
156 used summary statistics level data of blood pressure and phospholipids^{7,28} utilizing the pipeline
157 in the R-package *TwoSampleMR*⁴¹. In brief, the genetic instrument was based on the top genetic
158 determinant SNPs with linkage disequilibrium (LD) $R^2 < 0.05$ within 500kpbs clumping distance.
159 The proportion of variance in the exposure explained by the genetic variance (R^2) and F statistics
160 were calculated to estimate the statistic power of MR. As the sample size in the phospholipid
161 GWAS in the ESIMS/MS platform is small ($n = 4,034$), to increase the explained variance of the
162 instrumental variable, $P\text{-value} < 1.0 \times 10^{-7}$ was used to define the genetic determinants of
163 phospholipids. The GWAS summary statistics of the same phospholipids available in Biocrates
164 metabolomics platform were also used additionally to increase the statistical power ($n = 7,478$)⁴².
165 For genetic determinants of blood pressure, the genome-wide significance level ($P\text{-value} < 5 \times 10^{-8}$)
166 was used. Inverse-variance weighted MR was used with weighted median, sample mode and
167 weighted mode methods as sensitivity to investigate pleiotropy. MR-Egger regression was used
168 to control the directional horizontal pleiotropy, and the Egger estimates on the intercept was
169 used for the heterogeneity tests^{43,44}. The Bonferroni corrected P-value with independent
170 equivalents of phospholipids was used as the significance level.

171 **Phenome-wide association study (pheWAS)**

172 We further studied the pleiotropic effect of the genetic determinants of the identified
173 phospholipids using phenome-wide association study (pheWAS) by data-mining from previous

174 publications⁴⁵. For the top SNPs of either phospholipids used in MR, we looked up their pheno-
175 wide associations in GWAS ATLAS⁴⁵. We estimated the false discovery rate (FDR < 0.05) by
176 Benjamini & Hochberg method.

177 **Results**

178 **Association analysis**

179 Baseline characteristics of the five participating cohorts are shown in Table 1. The mean
180 age ranged from 47.1 (with standard deviation 20.8) years old in NSPHS to 56.6 (with standard
181 deviation 15.6) years old in CROATIA-Vis. and the proportion of females ranged from 53.2 % in
182 NSPHS to 57.0% in ORCADES. The means and standard deviations of the concentration of the 151
183 phospholipids across the five cohorts are shown in Supplementary Table 2 and Supplementary
184 Figure 1. Most of the phospholipids have similar concentrations across cohorts, except for PLPE
185 18:1, PLPE 18:0 and PLPE 16:0. The associations of all 151 phospholipids with blood pressure in
186 the discovery panel, replication panel and combination are shown in in Supplementary Table 3.
187 Volcano plots in Figures 1A and 1B show the meta-analysis results of the discovery panel in a J
188 shape. Five phospholipids (PC 32:1, PC 40:5, PE 38:4, PE 40:5 and PE 40:6) were significantly
189 associated with SBP, and seven phospholipids (PE 38:3, PE 38:4, PE 38:6, PE 40:4, PE 40:5, PE 40:6
190 and LPC 22:4) were associated with DBP using Bonferroni corrected significance threshold. For
191 the significant phospholipids found in the discovery analysis, only LPC 22:4 was associated
192 inversely to DBP. Eleven of the 12 significant associations from the discovery were replicated in
193 MICROS based on the following adjusted P-value thresholds: 0.017 for SBP and 0.013 for DBP

194 (Figure 1). Only LPC 22:4 did not replicate in MICROS. Further, we focused on the 11 significant
195 associations with eight unique phospholipids which were replicated.

196 The significant associations were generally attenuated upon adjustment for BMI, HDL-C,
197 TC, lipid-lowering medication and T2D status in model 2, with the proportion of the effect
198 estimate decreased ranged from 4.5% for the association between PC 32:1 and SBP to 46.2% for
199 the association between PE 40:6 and DBP, but all of the associations remained significant (Table
200 2). All the identified phospholipids were highly correlated with each other, while the correlation
201 among the PEs was obviously higher than with the PCs or between the PCs (Supplementary Figure
202 2).

203 **Association with future hypertension and cardiometabolic traits**

204 We studied the relationship between the identified phospholipids and incident
205 hypertension in 447 available participants from the ERF study, including 92 patients with incident
206 hypertension. None of the eight identified phospholipids (six PEs and two PCs) were individually
207 significantly associated with incident hypertension in our study (Supplementary Table 4). But the
208 joint effect of the eight phospholipids was significantly associated with incident hypertension (P-
209 value = 5.0×10^{-8} , Figure 2). Although in the phospholipids-only model, the discrimination
210 between those with and without future hypertension is limited (AUC=0.61) and significantly
211 lower than that of the Framingham model, adding the eight phospholipids significantly improved
212 the AUC on top of the Framingham model from 0.75 to 0.76 ($P_{IDI} = 0.02$, $P_{NRI} = 0.06$, Figure 2).

213 Figure 3 shows the association of the blood pressure-related phospholipids with the
214 classical/clinical cardiometabolic traits measured in ERF (N = 818 analytical sample size).

215 Triglycerides were strongly associated with all of the eight blood pressure-related phospholipids
216 and form the first cluster themselves. Although the direction and strength of association are very
217 similar to triglycerides, the association of triglycerides appears to be independent of the second
218 cluster. The second cluster involved waist, waist-hip ratio, glucose, total fat percentage, BMI,
219 leptin, use of anti-hypertensives, T2D, lipid-lowering medication, CRP, HOMA-IR, insulin and TC.
220 Most of the significant associations were in the same (positive) direction of the association
221 between blood pressure and related phospholipids. The third cluster had much fewer significant
222 associations. We found associations between PCs and environmental exposures such as smoking
223 and alcohol intake, but also heart rate, albumin, HDL and LDL-C and adiponectin. No significant
224 association was found between the phospholipids and vascular-related variables, including PWV,
225 intima-media thickness and plaque score.

226 **Mendelian randomization and phenome-wide association study**

227 The MR pipeline resulted in two to six independent SNPs included in the genetic risk score
228 as instrumental variables for each phospholipid (R^2 range from 2.7% to 5.2%), 471 SNPs for SBP
229 ($R^2 = 4.0\%$) and 506 SNPs for DBP (4.3%). The F-statistics ranged from 55.1 for the MR in PE 40:4
230 to DBP to 105.7 in PE 40:5 to SBP and DBP. The two PCs, i.e. PC 32:1 and PC 40:5 were also
231 performed using the summary statistics of Biocrates platform. However, no significant results
232 were found in either MR test (Supplementary Table 5).

233 The top SNPs which were associated at genome-wide significance with blood pressure
234 related phospholipids are rs174576, rs10468017, rs261338, rs12439649, rs740006 and
235 rs7337573 and located in the protein-coding genes *TMEM258*, *FADS2*, *ALDH1A2*, *LIPC*, and

236 antisense gene *RP11-355N15.1*, after considering for the linkage disequilibrium. In total, 1513
237 SNP-trait associations were identified from the pheWAS database⁴⁵ after controlling for false
238 discovery rate (Supplementary Table 6). The most highly significant related traits were in
239 metabolic domain which are mainly lipoproteins, and blood cell counts. The next highly related
240 traits are heart rate and pulse rate in the cardiovascular domain. Other highly significant related
241 traits including male pattern baldness, height, glucose, etc. (Figure 4).

242 **Discussion**

243 The current study identified and replicated the association of eight phospholipids with
244 either SBP or DBP. These phospholipids jointly associated with incident hypertension and
245 improved the discrimination model of incident hypertension. Strong associations were identified
246 of these phospholipids with triglycerides, but also with obesity related traits (e.g., waist, waist-
247 hip ratio, total fat percentage, BMI and leptin), T2D and related traits (e.g. glucose, HOMA-IR and
248 insulin). Meanwhile, the genetic determinants of these phospholipids also highly and genome-
249 widely associated with lipoproteins, blood cell counts, heart rate, pulse rate, glucose and many
250 potential pleiotropic traits, e.g. male pattern baldness, height, etc. No significant association was
251 identified between the genetic susceptibility of blood pressure and phospholipids by MR
252 approach, in either direction.

253 We found a predictive effect of the joint phospholipids on future hypertension, which was
254 consistent with the associations of these phospholipids and incident hypertension in the
255 Mexican-American population¹²; among the 11 replicated associations in the current study, ten
256 associations were replicated in the Mexican-American population using the current Bonferroni

257 P-value adjustment (0.017 for SBP and 0.013 for DBP, Supplementary Table 7). Moreover, PC
258 40:5, PE 38:3, PE 38:4, PE 38:6, PE 40:5 and PE 40:6 were also associated with incident
259 hypertension in their study. The similarity of the findings in populations of different ancestries
260 suggests a probability of a generalizable biological process. This is in line with our finding that the
261 significant associations of the identified phospholipids and blood pressure remain after
262 adjustment for various potential confounders or mediators, suggesting that the associations are
263 independent of these covariates. The association of the phospholipids with incident hypertension
264 and the improved predictive performance with adding these phospholipids onto the Framingham
265 model also implies that the phospholipid level may be a predictor of the occurrence of diagnosed
266 hypertension. However, we could not confirm any causation by current MR approach. Further
267 research is required to investigate this hypothesis.

268 The identified phospholipids are strongly associated with triglycerides, which share 1,2-
269 diglyceride with PCs and PEs as a substrate in their biosynthesis⁴⁶. This is in line with the previous
270 finding that blood pressure is related to DG in general and DG 16:0/22:5 and DG 16:0/22:6¹². We
271 also found that DBP is related to PE 38:6 which also includes a fraction of PE 16:0/22:6. These
272 blood pressure related phospholipids are also associated with obesity and diabetes related traits
273 (Figure 3). This is consistent with our results that after adjustment for BMI, HDL-C, TC, lipid-
274 lowering medication and T2D status in model 2, the effect estimate generally attenuated. It
275 implies that these factors may act as mediators in the associations. However, as the associations
276 were still statistically significant, we could not completely exclude the direct association of the
277 abnormal phospholipid levels and blood pressure. A one sample based formal causal mediation

278 analysis in a large-scale cohort is suggested to confirm their mediating effect on the association
279 of these phospholipids and blood pressure.

280 All the blood pressure related phospholipids identified in the current study have side
281 chains that are unsaturated fatty acids. The highly unsaturated fatty acids in the circulation are
282 from dietary intake as humans do not have the enzymes to synthesize them. The circulating fatty
283 acid levels are thus determined by both dietary intake and degradation, while the individual
284 capability of degradation is partially determined by heritability⁴⁷. If the degradation is abnormal,
285 this will cause high level of exogenous unsaturated fatty acids in circulation, which subsequently
286 leads to high level of phospholipids which contain these unsaturated fatty acid chains. This is
287 consistent with the J shape (Figure 1) of the associations between blood pressure and
288 phospholipids in fasting blood samples, most of which have a positive direction. A recent study
289 reported a higher heritability in the phosphatidylcholines with a high degree of unsaturation than
290 phosphatidylcholines with low degrees of unsaturation⁴⁸. Among our study, six of the eight
291 identified phospholipids with polyunsaturated fatty acid chain (PC 40:5, PE 38:3, PE 38:4, PE 38:6
292 and PE 40:6) are replicated but also validated by a previous study¹². This provides evidence that
293 the associations of the specific phospholipids and blood pressure are genetically driven. *FADS1*,
294 *FADS2* and *TMEM258* are all located on chromosome 11 and band q12.2 (*11q12.2*) in linkage
295 disequilibrium. Our findings that they are also genome-widely significantly associated with heart
296 and pulse rate raise the chance that phospholipids metabolism may be implicated in the
297 relationship with blood pressure through the pleiotropic effect of genes located in *11q12.2*. An
298 in-depth study in the (pleiotropic) role of gene *FADS/TMEM258* on the association of
299 phospholipids, blood pressure and these traits is highly suggested.

300 The strengths of this study include the use of detailed characterized phospholipid data in
301 a large sample size, as well as the use of replication panels. A multi-omics approach and the
302 integration of genomic, metabolomic and epidemiologic data were performed to maximize the
303 in-depth research of the mechanism. One of the limitations is the small number of incident
304 hypertension cases in the current study. However, the integration of genetic data has raised an
305 interesting hypothesis to be tested in future pathophysiological studies, in human beings and
306 animals. To our knowledge, this is the first study performing MR on phospholipids and blood
307 pressure. Though no significant findings were identified in the current study, the development of
308 high-throughput technology on lipidomics will facilitate the discovery of more genetic
309 determinants for the phospholipids and improve the strength of the instrumental variables.
310 Previous studies reported that some anti-hypertensive drugs may have an effect on metabolism
311 as well^{49,50}. In the current study, we found a significant association of anti-hypertensive drug
312 intake and the blood pressure related phospholipids. Following the route of the previous large
313 GWAS study of blood pressure which adjusted for anti-hypertensive drugs intake and using MR
314 to overcome confounders in the association of blood pressure and phospholipids, we still cannot
315 fully exclude the effect of anti-hypertensive drugs on phospholipids. Indeed, one of the genes we
316 identified, *ALDH1A2* has been implicated in coronary artery calcification^{51,52} and is known to
317 interact with atenolol, a beta blocker that is prescribed to treat high blood pressure and irregular
318 heartbeats (arrhythmia)⁵³. This asks for more careful exploration of the difference between the
319 effect of hypertension and the effect of anti-hypertensives.

320 In conclusion, we show eight phospholipids in the circulation that significantly associate
321 with blood pressure and show strong clustering with components of cardiometabolic disease.

322 These phospholipids collectively associate with incident hypertension and improve the
323 discrimination effect of previous prediction model. Our cross-omics analyses show that
324 phospholipid metabolites in circulation may yield insight into blood pressure regulation and raise
325 a number of testable hypothesis for future research.

326

327 **References**

328

329 1. Poulter, N.R., Prabhakaran, D. & Caulfield, M. Hypertension. *Lancet* **386**, 801-812 (2015).

330 2. Canessa, M., Adragna, N., Solomon, H.S., Connolly, T.M. & Tosteson, D.C. Increased

331 sodium-lithium countertransport in red cells of patients with essential hypertension. *N*

332 *Engl J Med* **302**, 772-776 (1980).

333 3. Holthuis, J.C., Pomorski, T., Raggars, R.J., Sprong, H. & Van Meer, G. The organizing

334 potential of sphingolipids in intracellular membrane transport. *Physiol Rev* **81**, 1689-

335 1723 (2001).

336 4. Zicha, J., Kunes, J. & Devynck, M.A. Abnormalities of membrane function and lipid

337 metabolism in hypertension: a review. *Am J Hypertens* **12**, 315-331 (1999).

338 5. Mundra, P.A., Shaw, J.E. & Meikle, P.J. Lipidomic analyses in epidemiology. *Int J*

339 *Epidemiol* (2016).

340 6. Demirkan, A., *et al.* Plasma phosphatidylcholine and sphingomyelin concentrations are

341 associated with depression and anxiety symptoms in a Dutch family-based lipidomics

342 study. *J Psychiatr Res* **47**, 357-362 (2013).

343 7. Demirkan, A., *et al.* Genome-wide association study identifies novel loci associated with

344 circulating phospho- and sphingolipid concentrations. *PLoS Genet* **8**, e1002490 (2012).

345 8. Gonzalez-Covarrubias, V., *et al.* Lipidomics of familial longevity. *Aging Cell* **12**, 426-434

346 (2013).

347 9. Meikle, P.J., *et al.* Plasma lipid profiling shows similar associations with prediabetes and

348 type 2 diabetes. *PLoS One* **8**, e74341 (2013).

- 349 10. Heimerl, S., *et al.* Alterations of plasma lysophosphatidylcholine species in obesity and
350 weight loss. *PLoS One* **9**, e111348 (2014).
- 351 11. Haus, J.M., *et al.* Plasma ceramides are elevated in obese subjects with type 2 diabetes
352 and correlate with the severity of insulin resistance. *Diabetes* **58**, 337-343 (2009).
- 353 12. Kulkarni, H., *et al.* Plasma lipidomic profile signature of hypertension in Mexican
354 American families: specific role of diacylglycerols. *Hypertension* **62**, 621-626 (2013).
- 355 13. Graessler, J., *et al.* Top-down lipidomics reveals ether lipid deficiency in blood plasma of
356 hypertensive patients. *PLoS One* **4**, e6261 (2009).
- 357 14. Lin, Y.T., *et al.* Global Plasma Metabolomics to Identify Potential Biomarkers of Blood
358 Pressure Progression. *Arterioscler Thromb Vasc Biol*, ATVBaha120314356 (2020).
- 359 15. Dietrich, S., *et al.* Identification of Serum Metabolites Associated With Incident
360 Hypertension in the European Prospective Investigation into Cancer and Nutrition-
361 Potsdam Study. *Hypertension* **68**, 471-477 (2016).
- 362 16. Vitart, V., *et al.* SLC2A9 is a newly identified urate transporter influencing serum urate
363 concentration, urate excretion and gout. *Nat Genet* **40**, 437-442 (2008).
- 364 17. Aulchenko, Y.S., *et al.* Linkage disequilibrium in young genetically isolated Dutch
365 population. *Eur J Hum Genet* **12**, 527-534 (2004).
- 366 18. Igl, W., Johansson, A. & Gyllenstein, U. The Northern Swedish Population Health Study
367 (NSPHS)--a paradigmatic study in a rural population combining community health and
368 basic research. *Rural Remote Health* **10**, 1363 (2010).
- 369 19. McQuillan, R., *et al.* Runs of homozygosity in European populations. *Am J Hum Genet* **83**,
370 359-372 (2008).

- 371 20. Pattaro, C., *et al.* The genetic study of three population microisolates in South Tyrol
372 (MICROS): study design and epidemiological perspectives. *BMC Med Genet* **8**, 29 (2007).
- 373 21. Liebisch, G., Drobnik, W., Lieser, B. & Schmitz, G. High-throughput quantification of
374 lysophosphatidylcholine by electrospray ionization tandem mass spectrometry. *Clin*
375 *Chem* **48**, 2217-2224 (2002).
- 376 22. Liebisch, G., Lieser, B., Rathenberg, J., Drobnik, W. & Schmitz, G. High-throughput
377 quantification of phosphatidylcholine and sphingomyelin by electrospray ionization
378 tandem mass spectrometry coupled with isotope correction algorithm. *Biochim Biophys*
379 *Acta* **1686**, 108-117 (2004).
- 380 23. Rubin, D.B. *Multiple imputation for nonresponse in surveys*, (John Wiley & Sons, 2004).
- 381 24. Tobin, M.D., Sheehan, N.A., Scurrah, K.J. & Burton, P.R. Adjusting for treatment effects
382 in studies of quantitative traits: antihypertensive therapy and systolic blood pressure.
383 *Stat Med* **24**, 2911-2935 (2005).
- 384 25. Sabatti, C., *et al.* Genome-wide association analysis of metabolic traits in a birth cohort
385 from a founder population. *Nat Genet* **41**, 35-46 (2009).
- 386 26. Holmes, M.V., *et al.* Association between alcohol and cardiovascular disease: Mendelian
387 randomisation analysis based on individual participant data. *BMJ* **349**, g4164 (2014).
- 388 27. Newton-Cheh, C., *et al.* Genome-wide association study identifies eight loci associated
389 with blood pressure. *Nat Genet* **41**, 666-676 (2009).
- 390 28. Evangelou, E., *et al.* Genetic analysis of over 1 million people identifies 535 new loci
391 associated with blood pressure traits. *Nat Genet* **50**, 1412-1425 (2018).

- 392 29. Karssen, L.C., van Duijn, C.M. & Aulchenko, Y.S. The GenABEL Project for statistical
393 genomics. *F1000Res* **5**, 914 (2016).
- 394 30. Willer, C.J., Li, Y. & Abecasis, G.R. METAL: fast and efficient meta-analysis of
395 genomewide association scans. *Bioinformatics* **26**, 2190-2191 (2010).
- 396 31. Li, J. & Ji, L. Adjusting multiple testing in multilocus analyses using the eigenvalues of a
397 correlation matrix. *Heredity (Edinb)* **95**, 221-227 (2005).
- 398 32. Parikh, N.I., *et al.* A risk score for predicting near-term incidence of hypertension: the
399 Framingham Heart Study. *Ann Intern Med* **148**, 102-110 (2008).
- 400 33. Henneman, P., *et al.* Genetic architecture of plasma adiponectin overlaps with the
401 genetics of metabolic syndrome-related traits. *Diabetes Care* **33**, 908-913 (2010).
- 402 34. Sayed-Tabatabaei, F.A., *et al.* Heritability of the function and structure of the arterial
403 wall: findings of the Erasmus Rucphen Family (ERF) study. *Stroke* **36**, 2351-2356 (2005).
- 404 35. van Rijn, M.J., *et al.* Heritability of blood pressure traits and the genetic contribution to
405 blood pressure variance explained by four blood-pressure-related genes. *J Hypertens* **25**,
406 565-570 (2007).
- 407 36. Broer, L., *et al.* Association of adiponectin and leptin with relative telomere length in
408 seven independent cohorts including 11,448 participants. *Eur J Epidemiol* **29**, 629-638
409 (2014).
- 410 37. Eijgelsheim, M., *et al.* Genome-wide association analysis identifies multiple loci related
411 to resting heart rate. *Hum Mol Genet* **19**, 3885-3894 (2010).
- 412 38. Schuur, M., *et al.* Insulin-resistance and metabolic syndrome are related to executive
413 function in women in a large family-based study. *Eur J Epidemiol* **25**, 561-568 (2010).

- 414 39. Rokach, L. & Maimon, O. Clustering methods. in *Data mining and knowledge discovery*
415 *handbook* 321-352 (Springer, 2005).
- 416 40. Lawlor, D.A., Harbord, R.M., Sterne, J.A., Timpson, N. & Davey Smith, G. Mendelian
417 randomization: using genes as instruments for making causal inferences in
418 epidemiology. *Stat Med* **27**, 1133-1163 (2008).
- 419 41. Hemani, G., *et al.* The MR-Base platform supports systematic causal inference across the
420 human phenome. *Elife* **7**(2018).
- 421 42. Draisma, H.H.M., *et al.* Genome-wide association study identifies novel genetic variants
422 contributing to variation in blood metabolite levels. *Nat Commun* **6**, 7208 (2015).
- 423 43. Bowden, J., *et al.* A framework for the investigation of pleiotropy in two-sample
424 summary data Mendelian randomization. *Stat Med* **36**, 1783-1802 (2017).
- 425 44. Bowden, J., *et al.* Assessing the suitability of summary data for two-sample Mendelian
426 randomization analyses using MR-Egger regression: the role of the I² statistic. *Int J*
427 *Epidemiol* **45**, 1961-1974 (2016).
- 428 45. Watanabe, K., *et al.* A global view of pleiotropy and genetic architecture in complex
429 traits. *bioRxiv*, 500090 (2018).
- 430 46. Arvidson, G.A. Structural and metabolic heterogeneity of rat liver glycerophosphatides.
431 *Eur J Biochem* **4**, 478-486 (1968).
- 432 47. Chambers, J.C., *et al.* Genome-wide association study identifies loci influencing
433 concentrations of liver enzymes in plasma. *Nat Genet* **43**, 1131-1138 (2011).
- 434 48. Hagenbeek, F.A., *et al.* Heritability estimates for 361 blood metabolites across 40
435 genome-wide association studies. *Nat Commun* **11**, 39 (2020).

- 436 49. Bakris, G.L., *et al.* Metabolic effects of carvedilol vs metoprolol in patients with type 2
437 diabetes mellitus and hypertension: a randomized controlled trial. *Jama* **292**, 2227-2236
438 (2004).
- 439 50. Liu, J., *et al.* Integration of epidemiologic, pharmacologic, genetic and gut microbiome
440 data in a drug-metabolite atlas. *Nat Med* **26**, 110-117 (2020).
- 441 51. Inouye, M., *et al.* Novel Loci for metabolic networks and multi-tissue expression studies
442 reveal genes for atherosclerosis. *PLoS Genet* **8**, e1002907 (2012).
- 443 52. Buniello, A., *et al.* The NHGRI-EBI GWAS Catalog of published genome-wide association
444 studies, targeted arrays and summary statistics 2019. *Nucleic Acids Res* (2018).
- 445 53. Magvanjav, O., *et al.* Genetic Variants Associated With Uncontrolled Blood Pressure on
446 Thiazide Diuretic/beta-Blocker Combination Therapy in the PEAR (Pharmacogenomic
447 Evaluation of Antihypertensive Responses) and INVEST (International Verapamil-SR
448 Trandolapril Study) Trials. *J Am Heart Assoc* **6**(2017).

449

Table 1 Baseline characteristics of the study population in the association analysis.

	Discovery				Replication
	CROATIA-Vis	ERF	NSPHS	ORCADES	MICROS
N	710	717	678	681	1,185
Age (y)	56.6 (15.6)	51.9 (14.2)	47.1 (20.8)	57.0 (13.9)	45.7 (16.4)
Sex (% women)	57.40	59.00	53.2	57.9	56.0
Body mass index (kg/m ²)	27.4(4.3)	27.0 (4.4)	26.4 (4.8)	27.7 (4.8)	25.6 (4.8)
HDL-C (mmol/L)	1.10(0.16)	1.29 (0.36)	1.60 (0.41)	1.57 (0.42)	1.68 (0.38)
TC (mmol/L)	5.12(0.99)	5.67 (1.08)	5.86 (1.33)	5.56 (1.14)	5.87 (1.19)
Lipid-lowering medication use (%)	3.00	16.60	10.47	4.10	5.47
Systolic blood pressure (mmHg)	137.8 (24.45)	141.7 (22.0)	122.8 (18.6)	130.1 (18.46)	132.6 (20.5)
Diastolic blood pressure (mmHg)	80.5 (11.47)	80.6 (10.24)	74.1 (7.8)	76.0 (9.6)	79.6 (11.3)
Antihypertensive medication use (%)	24.1	25.2	20.5	39.1	14.6
Type 2 diabetes (%)	4.2	6.0	4.1	2.8	3.1

Values are mean (SD) or percentages. N refers to the largest sample size used in this study.

Table 2 Effect of adjustments on the association between selected lipids and blood pressure.

Name	Model 1						Model 2	
	Discovery (N = 2,786)		Replication (N = 1,185)		Combined (N = 3,971)		Combined (N = 3,937)	
	Effect	P-value	Effect	P-value	Effect	P-value	Effect	P-value
<i>Systolic blood pressure</i>								
PC 32:1	2.7	1.5×10 ⁻⁰⁶	1.8	2.4×10 ⁻⁰⁴	2.2	2.6×10 ⁻⁰⁹	2.1	9.6×10 ⁻⁰⁸
PC 40:5	2.0	6.7×10 ⁻⁰⁴	2.0	1.0×10 ⁻⁰⁴	2.2	3.2×10 ⁻⁰⁹	1.6	2.7×10 ⁻⁰⁵
PE 38:3	2.1	7.0×10 ⁻⁰⁵	2.2	2.6×10 ⁻⁰⁵	2.1	6.8×10 ⁻⁰⁹	1.5	4.0×10 ⁻⁰⁵
PE 40:5	2.1	4.9×10 ⁻⁰⁵	2.3	1.7×10 ⁻⁰⁵	2.2	3.2×10 ⁻⁰⁹	1.6	2.7×10 ⁻⁰⁵
PE 40:6	2.4	2.2×10 ⁻⁰⁵	1.7	6.7×10 ⁻⁰⁴	2.0	8.6×10 ⁻⁰⁸	1.2	1.9×10 ⁻⁰³
<i>Diastolic blood pressure</i>								
PE 38:4	1.5	9.7×10 ⁻⁰⁶	1.2	7.6×10 ⁻⁰⁷	1.3	3.7×10 ⁻¹¹	0.9	1.3×10 ⁻⁰⁵
PE 40:5	1.3	1.4×10 ⁻⁰⁵	1.4	6.7×10 ⁻⁰⁸	1.4	3.5×10 ⁻¹²	1.0	3.4×10 ⁻⁰⁶
PE 40:6	1.4	4.4×10 ⁻⁰⁵	1.3	3.5×10 ⁻⁰⁷	1.3	5.7×10 ⁻¹¹	0.7	3.4×10 ⁻⁰⁴
PE 38:3	1.1	3.0×10 ⁻⁰⁴	1.3	1.8×10 ⁻⁰⁷	1.2	7.0×10 ⁻¹⁰	0.8	4.0×10 ⁻⁰⁵
PE 38:6	1.1	6.5×10 ⁻⁰⁴	0.8	2.5×10 ⁻⁰³	0.9	1.2×10 ⁻⁰⁵	0.6	2.7×10 ⁻⁰³
PE 40:4	1.1	3.9×10 ⁻⁰⁴	1.9	3.1×10 ⁻¹¹	1.6	3.8×10 ⁻¹³	1.2	7.2×10 ⁻⁰⁸

Table shows the identified lipids through discovery and replication (Figure 1). Model 1 was performed in discovery, replication and combined data with age and sex as covariates; Model 2 was performed in the combined data with additional adjustment for BMI, HDL-C, TC, lipid-lowering medication and type 2 diabetes status based on model 1.

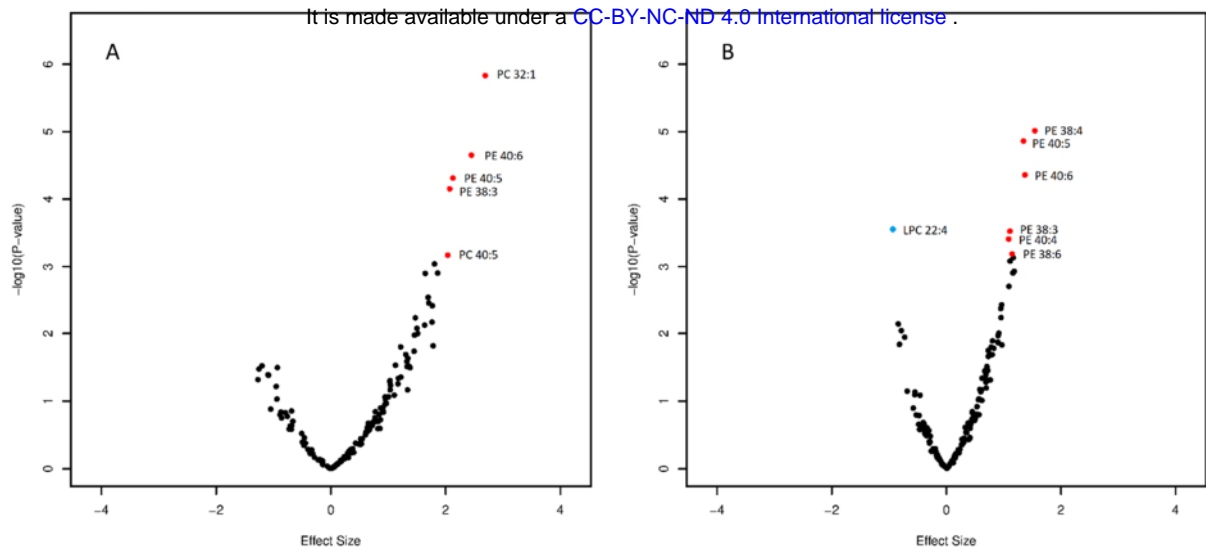


Figure 1 Association of phospholipids and blood pressure in model 1.

Figure 1A: phospholipids associated with SBP. Figure 1B: phospholipids associated with DBP. Age, sex and family relationship were adjusted for in the regression analysis. Red: Lipids are significantly associated with blood pressure and replicated. Blue: lipid LPC 22:4 significantly associated with blood pressure but failed in the replication.

It is made available under a [CC-BY-NC-ND 4.0 International license](https://creativecommons.org/licenses/by-nc-nd/4.0/) .

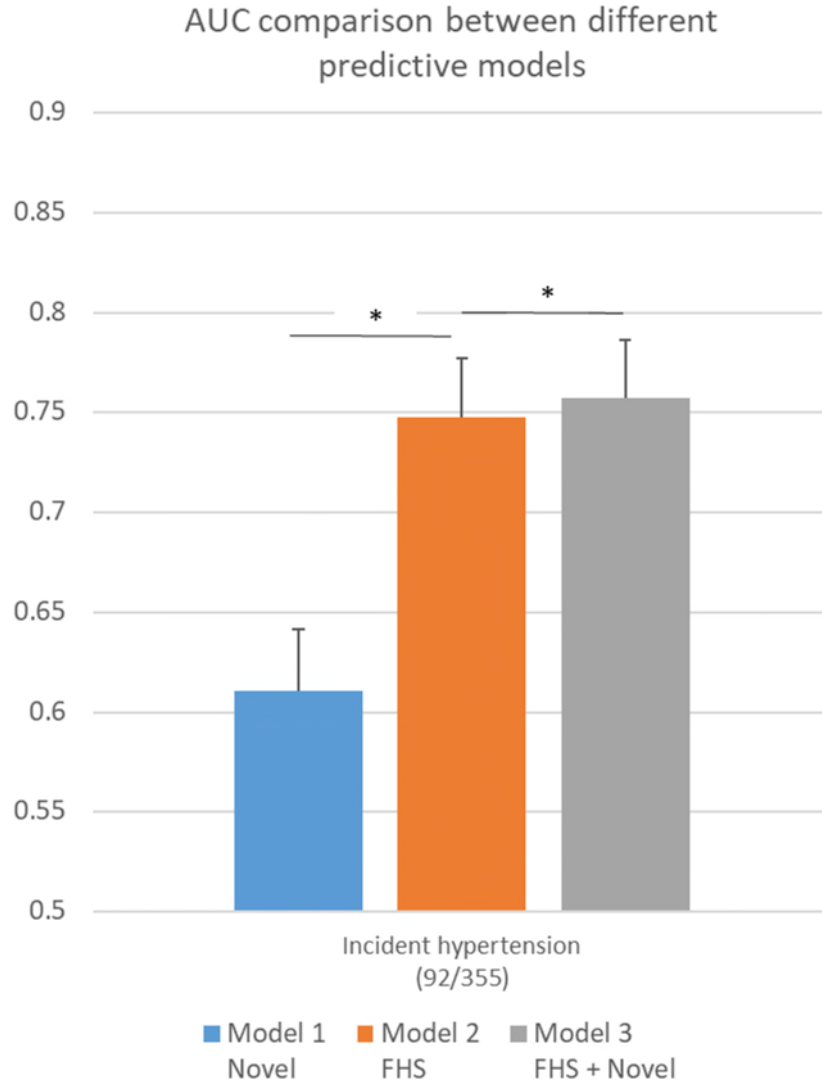


Figure 2 AUC comparison between eight phospholipids associated with either SBP or DBP, the factors included in the Framingham risk score and their combination. Model 1 *Novel*: The model includes phospholipids associated with either SBP or DBP only: PC 32:1, PC 40:5, PE 38:3, PE 40:6, PE 40:5, PE 38:4, PE 38:6, PE 40:4. Model 2 *FHS*: The model includes the factors from the Framingham risk scores of incident hypertension: age, sex, SBP, DBP, BMI, cigarette smoking and parental hypertension. Model 3 *FHS + Novel*: the advanced model adding factors in model 1 and Model 2. * $P_{IDI} < 0.05$. IDI: Integrated Discrimination Improvement test.

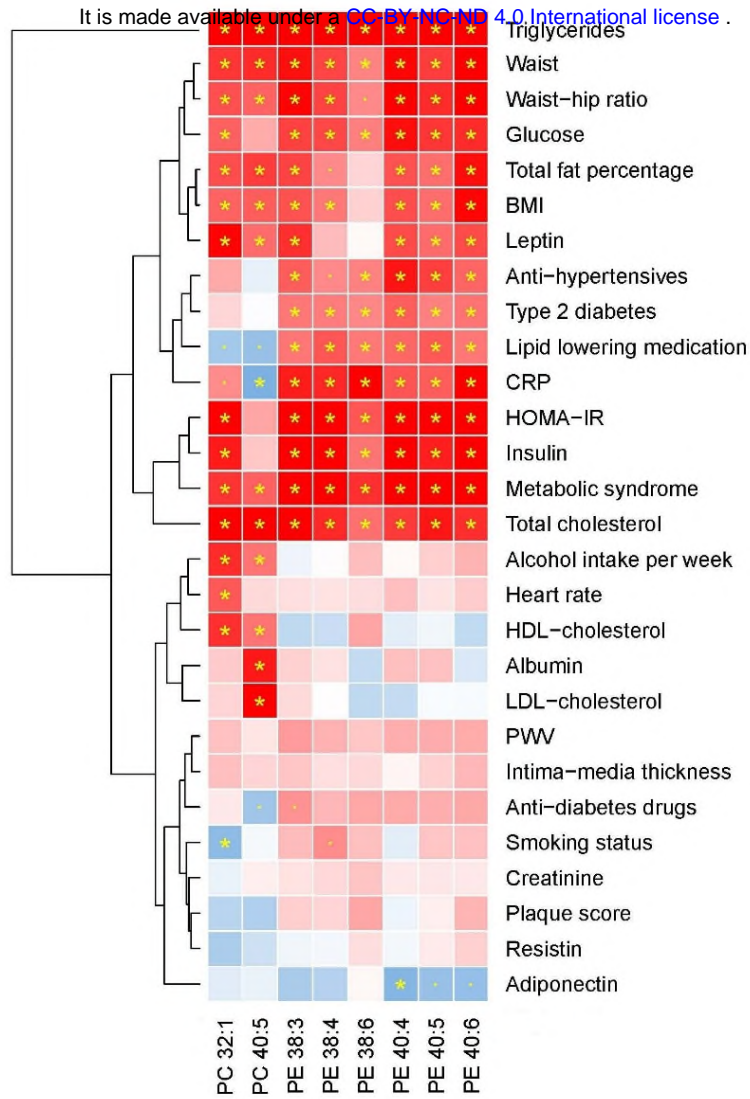


Figure 3 Association of blood pressure related phospholipids and cardiometabolic traits in ERF. Hierarchical clustering approach was used for the clustering. Red: positive association; blue: negative association. The depth of the color displays the strength of z score in the regression. * FDR < 0.05. . P-value < 0.05.

It is made available under a [CC-BY-NC-ND 4.0 International license](https://creativecommons.org/licenses/by-nc-nd/4.0/) .

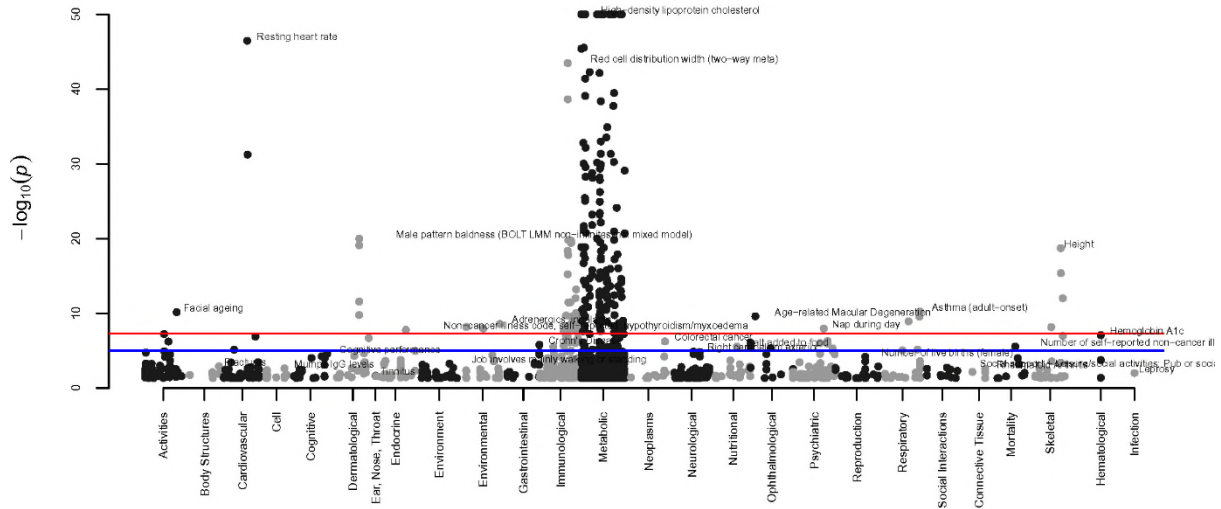


Figure 4 Results of the phenome-wide association study of the genetic determinants of the blood pressure related phospholipids. In each domain (x-axis), the top trait was annotated in the figure. The traits with P-value level less than 1.0×10^{-50} were annotated as 1.0×10^{-50} in the figure.

Ethics declarations

It is made available under a [CC-BY-NC-ND 4.0 International license](#) .

CROATIA-VIS: All subjects were asked to provide written consent, after being informed on the study goals and main approaches, in accordance with the Declaration of Helsinki. The study was approved by the ethics committees of the University of Zagreb (No. 018057) and the University of Split School of Medicine (No. 2181-198-A3-04110-11-0008), Croatia and the Multi-Centre Research Ethics Committee for Scotland (No. 01/0/71).

ERF: The study protocol was approved by the medical ethics board of the Erasmus Medical Center Rotterdam, the Netherlands. All participants gave their informed consent in writing.

MICROS: A detailed information sheet and a form for the written informed consent were provided to each prospective participant to approve. The study was approved by the Ethics Committee of the Autonomous Province of Bolzano.

NSPHS: The NSPHS study was approved by the local ethics committee at the University of Uppsala (Regionala Etikprövningsnämnden, Uppsala, Dnr 2005:325) in compliance with the Declaration of Helsinki. All participants gave their written informed consent to the study. For participants of under legal age, a legal guardian also signed. The procedure used to obtain informed consent and the respective informed consent form has been recently discussed according to current ethical guidelines.

ORCADES: ORCADES received ethical approval from the appropriate research ethics committees in 2004. Data collection was carried out in Orkney between 2005 and 2007. Informed consent and blood samples were provided by 1019 Orcadian volunteers who had at least one grandparent from the North Isles of Orkney.

Data availability

The summary statistics of the meta-analysis, replication and other relevant data supporting the key findings of this study are available within the article and its supplementary information files; the cohort data sets generated and analyzed during the current study are available from the authors

from each cohort upon reasonable request. No custom code or mathematical algorithm was used in the current study.

Contributions

J.L., P.S.d.V., C.M.v.D., A. Dehghan and A. Demirkan contributed to study design. O.H.F., A.A.H., V.V., I.R., H.C. and O.P. contributed to data collection. C.H., I.R., H.C. P.P.P., J.F.W., U.G., C.M.v.D and A. Dehghan contributed to cohort design and management. J.L., P.S.d.V., F.D.G.M., A.J. and K.E.S. contributed to data analysis. J.L., P.S.d.V., K.W.v.D., C.M.v.D., A.Dihghan, A. Demirkan contributed to writing of manuscript. J.L., P.S.d.V., F.D.G.M., A.J., K.E.S., C.H., K.W.v.D., O.H.F., A.A.H., V.V., I.R., H.C., O.P., P.P.P., J.F.W., U.G., C.M.v.D., A. Dehghan and A. Demirkan contributed to critical review of manuscript.

Conflict of interest

All the authors report no financial or other conflict of interest relevant to the subject of this article.

Acknowledgement

We would give our acknowledgement to Prof Gerd Schmitz and his team at the Institute for Clinical Chemistry and Laboratory Medicine, University Hospital Regensburg, Regensburg, Germany for generating the phospholipid data.

CROATIA-VIS: We thank a large number of individuals for their individual help in organizing, planning, and carrying out the field work and data management related to the VIS study: Professor Pavao Rudan and the staff of the Institute for Anthropological Research in Zagreb, Croatia (organization of the field work, anthropometric and physiological measurements, and DNA extraction); Professor Ariana Vorko-Jovic and the staff and medical students of the Andrija Stampar School of Public Health of the Faculty of Medicine, University of Zagreb, Croatia (questionnaires, genealogical reconstruction and data entry); Dr. Branka Salzer from the biochemistry lab “Salzer,”

Croatia (measurements of biochemical traits); local general practitioners and nurses (recruitment and communication with the study population); and the employees of several other Croatian institutions who participated in the field work, including but not limited to the University of Rijeka and Split, Croatia; Croatian Institute of Public Health; Institutes of Public Health in Split and Dubrovnik, Croatia. SNP Genotyping of the Vis samples was carried out by the Genetics Core Laboratory at the Wellcome Trust Clinical Research Facility, WGH, Edinburgh.

ERF: For the ERF Study, we are grateful to all participants and their relatives, to general practitioners and neurologists for their contributions, to P. Veraart for her help in genealogy, to Jeannette Vergeer for the supervision of the laboratory work, and to P. Snijders for his help in data collection.

MICROS: For the MICROS study, we thank the primary care practitioners Raffaella Stocker, Stefan Waldner, Toni Pizzocco, Josef Plangger, Ugo Marcadent, and the personnel of the Hospital of Silandro (Department of Laboratory Medicine) for their participation and collaboration in the research project.

NSPHS: We are grateful for the contribution of district nurse Svea Hennix for data collection and Inger Jonasson for logistics and coordination of the NSPHS health survey. We would also like to thank all the participants from the community for their interest and willingness to contribute to this study. The computations were performed on resources provided by SNIC through Uppsala Multidisciplinary Center for Advanced Computational Science (UPPMAX).

ORCADES: DNA extractions for ORCADES were performed at the Wellcome Trust Clinical Research Facility in Edinburgh. We would like to acknowledge the invaluable contributions of Lorraine Anderson and the research nurses in Orkney, DNA extractions were performed at the Edinburgh Clinical Research Facility, University of Edinburgh. We would like to acknowledge the invaluable contributions of the research nurses in Orkney, the administrative team in Edinburgh and the people of Orkney.

Funding

EUROSPAN (European Special Populations Research Network) was supported by European Commission FP6 STRP grant number 018947 (LSHG-CT-2006-01947). High-throughput genome-wide association analysis of the data was supported by joint grant from Netherlands Organisation for Scientific Research and the Russian Foundation for Basic Research (NWO-RFBR 047.017.043). Lipidomic analysis was supported by the European Commission FP7 grant LipidomicNet (2007-202272). The CROATIA-VIS study in the Croatian island of Vis was supported through the grants from the Medical Research Council UK to and Ministry of Science, Education, and Sport of the Republic of Croatia (number 108-1080315-0302). The ERF study was supported by grants from the Netherlands Organisation for Scientific Research (Pionier, 047.016.009, 047.017.043), Erasmus MC, and the Centre for Medical Systems Biology (CMSB; National Genomics Initiative). Ayse Demirkan was supported by NWO (VENI-91616165), WCRF-2017/1641 and H2020-SC1-2019-874739. The MICROS study was supported by the Ministry of Health and Department of Educational Assistance, University and Research of the Autonomous Province of Bolzano, the South Tyrolean Sparkasse Foundation, and the European Union framework program 6 EUROSPAN project (contract no. LSHG-CT-2006-018947). The NSPHS study was funded by the Swedish Medical Research Council (Project Number K2007-66X-20270-01-3) and the Foundation for Strategic Research (SSF). NSPHS as part of EUROSPAN (European Special Populations Research Network) was also supported by European Commission FP6 STRP grant number 01947 (LSHG-CT-2006-01947). This work has also been supported by the Swedish Medical Research Council (Project Number 2011-2354), the Göran Gustafssons Foundation, the Swedish Society for Medical Research (SSMF), the Kjell och Märta Beijers Foundation, The Marcus Borgström Foundation, the Åke Wiberg foundation and the Vleugels Foundation. The Orkney Complex Disease Study (ORCADES) was supported by the Chief Scientist Office of the Scottish Government (CZB/4/276, CZB/4/710), a Royal Society URF to J.F.W., the MRC Human Genetics Unit quinquennial programme "QTL in Health and Disease", Arthritis Research UK and the European Union framework program 6 EUROSPAN project (contract no. LSHG-CT-2006-018947).

medRxiv preprint doi: <https://doi.org/10.1101/2020.12.08.20245050>; this version posted December 11, 2020. The copyright holder for this preprint **(which was not certified by peer review)** is the author/funder, who has granted medRxiv a license to display the preprint in perpetuity.

It is made available under a [CC-BY-NC-ND 4.0 International license](#) .