

Investigating the effects of accelerated partner therapy (APT) on chlamydia transmission in Britain: a mathematical modelling study

Christian L. Althaus^{*1}, Catherine H. Mercer², Jackie A. Cassell³, Claudia S. Estcourt⁴, and Nicola Low¹

¹Institute of Social and Preventive Medicine, University of Bern, Bern, Switzerland

²Institute for Global Health, University College London, London, UK

³Brighton and Sussex Medical School, East Sussex, UK

⁴School of Health and Life Sciences, Glasgow Caledonian University, Glasgow, UK

ABSTRACT

Understanding the effects of partner notification (PN) on the transmission of chlamydia, the most prevalent bacterial sexual transmitted infection worldwide, is critical for implementing optimal control strategies. Accelerated partner therapy (APT) aims to increase the numbers of partners treated and reduce the time to partner treatment. Our objective was to study the effects of APT interventions on partner treatment and chlamydia transmission in order to better understand the results of LUSTRUM, an APT cross-over cluster randomised controlled trial in the UK. We developed a novel deterministic, population-based chlamydia transmission model including the process of PN. We considered a population aged 16–34 years and calibrated the model to sexual behaviour data between people of the opposite-sex and chlamydia prevalence data reported by 3,671 participants in Britain's third National Survey of Sexual Attitudes and Lifestyles (Natsal-3, 2010–2012) using Approximate Bayesian Computation (ABC). We investigated the potential effects of APT on chlamydia transmission by increasing the number of treated partners and reducing the time to partner treatment compared to standard PN. The median prevalence of chlamydia in the model was 1.84% (95% credible interval, CrI: 1.60%–2.62%) in women and 1.78% (95% CrI: 1.13%–2.14%) in men. Chlamydia positivity was highest in partners of symptomatic index cases with low sexual activity. Infected partners were typically asymptomatic and belonged to the high sexual activity group, i.e., are naturally those infected individuals that will contribute most to onward transmission. Reducing the time to partner treatment without achieving higher numbers of partners treated had only minor effects on reducing chlamydia prevalence. In contrast, the model predicts that a potential increase in the number of partners treated from current levels in Britain (0.51, 95% CrI: 0.21–0.80) by 25% would reduce chlamydia prevalence by 18% (95% CrI: 5%–44%) in both women in men within 5 years. These results suggest that APT, through a potential increase in the proportion of partners treated, would be an effective method to reduce ongoing chlamydia transmission in Britain.

INTRODUCTION

Partner notification (PN) is considered an important intervention contributing to the control of *Chlamydia trachomatis* (chlamydia) infection. Chlamydia is the most common bacterial sexually transmitted infection (STI) worldwide and primarily found among young sexually active adults (Rowley et al., 2019). Treatment and prevention of chlamydia are of particular importance to

NOTE: This preprint reports new research that has not been certified by peer review and should not be used to guide clinical practice.

*Corresponding author: christian.althaus@alumni.ethz.ch

41 women since infection can lead to serious reproductive tract complications (Cates and Wasserheit,
42 1991). Most infections are asymptomatic and remain undiagnosed, however. PN involves the
43 identification and treatment of sexual partners exposed to infection to prevent re-infection of
44 the index case and prevent onward transmission (Organization and on HIV/AIDS, 1999). The
45 direct effects of PN on the identification of new cases and prevention of re-infection of index
46 cases are well-documented (Golden et al., 2005; Ferreira et al., 2013; Low et al., 2014). The
47 indirect population-level effects of PN on chlamydia transmission, incidence and prevalence are
48 less clear (Golden et al., 2015; Althaus et al., 2012a).

49 Accelerated partner therapy (APT) is a promising PN strategy, which aims to reduce the
50 time to partner treatment and increase the proportion of partners treated (Estcourt et al., 2012,
51 2015). APT is an adaption of expedited partner therapy (EPT) (Golden et al., 2015). The
52 difference between the strategies is that APT includes a clinical assessment of sex partners
53 through telephone-led or face-to-face consultation with an appropriately qualified healthcare
54 professional. APT could increase the uptake of PN towards, or even beyond, national targets.
55 Audits of data collected by the National Chlamydia Screening Programme (NCSP) showed that
56 PN uptake (the number of contacts per index case who were reported as having attended a sexual
57 health service within four working weeks of the date of the PN consultation) decreased from 0.53
58 in 2016 to 0.42 in 2017 and was below the standard of 0.6 (Public Health England, 2018). The
59 national average for the time to attending a health service was 3.2 days (Public Health England,
60 2016). An exploratory trial of APT resulted in 59% (95% confidence interval, CI: 49%–69%)
61 and 66% (95% CI: 52%–78%) of contactable partners treated in two APT models (telephone
62 hotline and pharmacy), compared to 36% (95% CI: 26%–47%) for standard PN (Estcourt et al.,
63 2012). This suggest that APT has the potential to increase the effective PN uptake. Furthermore,
64 the study found the median time (range) from diagnosis of the index case to partner treatment at
65 1 (0–14) day and 1 (0–6) day for the two APT models and 4 (0–17) days for standard PN.

66 Reliable estimates of the effects of APT are needed. The Limiting Undetected Sexually
67 Transmitted infections to RedUce Morbidity (LUSTRUM) programme is a cross-over cluster
68 randomised controlled trial (RCT) in the UK that aims to determine the effectiveness of APT
69 among opposite-sex partners with chlamydia (<https://www.lustrum.org.uk>). The
70 APT intervention is offered at the level of the sexual health clinic as an additional PN method
71 compared with standard PN (Estcourt et al., 2020). The trial is accompanied by mathematical
72 modelling of chlamydia transmission that we present here in order to better understand the
73 results from the trial and to quantify the effects of APT at the population level. The modelling
74 results will later feed into an economic evaluation for estimating the cost-effectiveness of APT
75 compared to standard PN (Roberts et al., 2012).

76 Mathematical modelling studies of chlamydia transmission have been widely used to explore
77 and understand the expected population-level effects of screening and PN interventions (Althaus
78 et al., 2012a, 2014; Rönn et al., 2017). Considerable progress in the understanding of chlamydia
79 transmission has been made, but substantial challenges remain. First, it proves difficult to
80 accurately describe the complex sexual contact structure among young adults which is necessary
81 to model PN interventions. Individual-based models offer great flexibility to trace an individual's
82 partnership history in detail but are difficult to parameterise (Althaus et al., 2012b). In contrast,
83 deterministic, population-based models are much more flexible to fit to epidemiological data,
84 but often restrict PN to ongoing (current) sexual partnerships only (Heijne et al., 2011; Rönn
85 et al., 2019). Second, the lack of data about chlamydia prevalence in the general population
86 before the introduction of screening for asymptomatic people and PN represents a major source
87 of uncertainty for the parameterisation of mathematical models. For example, a recent modelling
88 study estimated that chlamydia prevalence in the US population would have been almost twice

89 the current levels in the absence of screening and PN (Rönn et al., 2019). Third, assumptions
 90 about the level or duration of immunity following natural clearance of chlamydia has also been
 91 identified as an important factor influencing projections of the effects of interventions (Geisler
 92 et al., 2013; Omori et al., 2018; Smid et al., 2019).

93 We take an innovative approach that addresses these earlier limitations in order to adequately
 94 quantify the expected effects of different PN strategies on chlamydia transmission. To this end,
 95 we developed a novel deterministic, population-based chlamydia transmission model that can be
 96 calibrated to multiple data sources within a Bayesian framework. The model includes a dedicated
 97 PN module that tracks the most recent partners of index cases and can identify the index-partner
 98 combinations that result in the largest effect of PN on reducing chlamydia prevalence. The
 99 objectives of this study were to estimate the expected proportions of chlamydia positivity in
 100 partners of people with diagnosed chlamydia (index cases) and to quantify the effects of APT on
 101 chlamydia prevalence compared with standard PN in Britain.

102 METHODS

103 Chlamydia transmission model

We developed a deterministic, population-based model of chlamydia transmission between people of the opposite-sex (Fig 1). The model can be described by the following set of ordinary differential equations (ODEs):

$$\frac{dS_{ij}}{dt} = \mu N_{ij} - \lambda_{ij} S_{ij} + \sigma_i (I_{S,ij} + P_{S,ij}) + \tau_i (I_{S,ij} + I_{A,ij} + P_{S,ij} + P_{A,ij}) + v_i (P_{S,ij} + P_{A,ij}) + \omega_i R_{ij} - \mu S_{ij}, \quad (1)$$

$$\frac{dI_{S,ij}}{dt} = f_i \lambda_{ij} S_{ij} - \kappa_{S,ij} - (\sigma_i + \tau_i + \mu) I_{S,ij}, \quad (2)$$

$$\frac{dI_{A,ij}}{dt} = (1 - f_i) \lambda_{ij} S_{ij} - \kappa_{A,ij} - (\gamma_i + \tau_i + \mu) I_{A,ij}, \quad (3)$$

$$\frac{dP_{S,ij}}{dt} = \kappa_{S,ij} - (v_i + \sigma_i + \tau_i + \mu) P_{S,ij}, \quad (4)$$

$$\frac{dP_{A,ij}}{dt} = \kappa_{A,ij} - (v_i + \gamma_i + \tau_i + \mu) P_{A,ij}, \quad (5)$$

$$\frac{dR_{ij}}{dt} = \gamma_i (I_{A,ij} + P_{A,ij}) - (\omega_i + \mu) R_{ij}, \quad (6)$$

where S_{ij} are susceptible individuals of sex i and sexual activity group j , and N_{ij} denotes the respective population size. A fraction f_i of newly infected individuals is symptomatic ($I_{S,ij}$) and seeks treatment at rate σ_i or gets tested and treated at rate τ_i . Asymptomatically infected individuals ($I_{A,ij}$) are tested and treated at τ_i or clear the infection spontaneously at rate γ_i . Symptomatically and asymptomatically infected individuals can be notified by chlamydia-positive index cases at rates $\kappa_{S,ij}$ and $\kappa_{A,ij}$ (see Section *Partner notification*). Notified individuals $P_{S,ij}$ and $P_{A,ij}$ are treated at rate v_i . Spontaneous clearance of asymptomatic infection results in the development of immunity (R_{ij}), which is lost at rate ω_i . All individuals enter and leave the population at rate μ . The force of infection is given by

$$\lambda_{ij} = c_{ij} \sum_{j'=1}^n \beta_{i'j'j} \rho_{i'j'j} \frac{I_{S,i'j'} + I_{A,i'j'} + P_{S,i'j'} + P_{A,i'j'}}{N_{i'j'}}. \quad (7)$$

Here, $\beta_{i'j'j}$ represents the per partnership transmission probability from sex i' to i and between sexual activity group j' and j , and c_{ij} is the sexual partner change rate for individuals of sex i

and sexual activity group j . $\rho_{i'j'jj}$ represents the elements of the sexual mixing matrix (Garnett et al., 1999)

$$\rho_{i'j'jj} = \varepsilon \delta_{jj'} + (1 - \varepsilon) \frac{c_{i'j'} N_{i'j'}}{\sum_{k=1}^n c_{i'k} N_{i'k}}, \quad (8)$$

104 where $\delta_{jj'}$ denotes the Kronecker delta (it is equal to 1 if $j = j'$ and to 0 otherwise). Sexual
105 mixing between activity groups can vary from proportionate ($\varepsilon = 0$) to fully assortative ($\varepsilon = 1$).

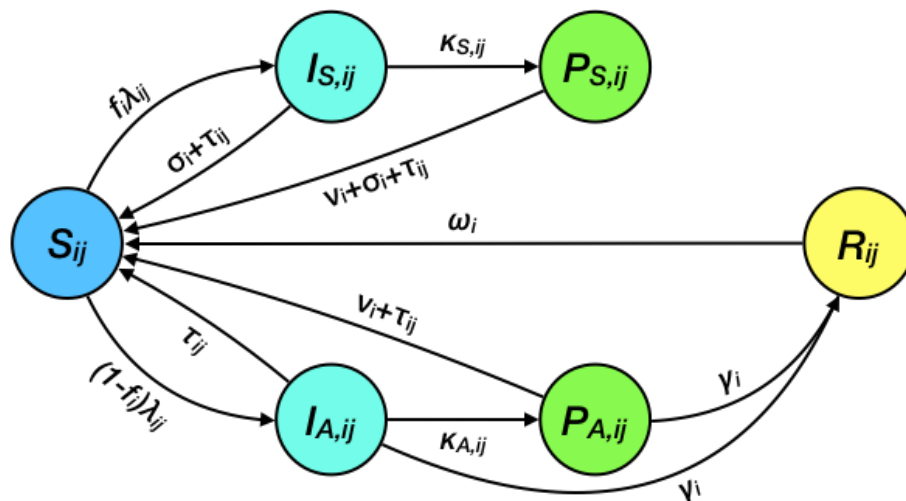


Figure 1. Schematic illustration of chlamydia transmission model. Susceptible individuals S_{ij} can become symptomatically and asymptotically infected ($I_{S,ij}$ and $I_{A,ij}$). Infected individuals can then become notified ($P_{S,ij}$ and $P_{A,ij}$) by their partners. All infected individuals can receive treatment to become susceptible again, or acquire temporal immunity (R_{ij}) through spontaneous clearance of the infection. Movement of individuals into and out of the population is omitted in the scheme. Subscripts i and j denote sex and sexual activity group, respectively.

106 Partner notification (PN) module and Who-Notifies-Whom (WNW) matrix

107 Symptomatically and asymptotically infected individuals ($I_{S,ij}$ and $I_{A,ij}$) can be notified by
108 chlamydia-positive index cases. These index cases who are treated because of symptoms (σ)
109 or asymptomatic testing (τ) initiate PN of their most recent sexual partner (Fig 2). To describe
110 this process in the transmission model, we constructed a Who-Notifies-Whom (WNM) matrix
111 in PN module. For simplicity, we assumed that PN is offered to index cases only, and not to
112 their notified partners. We further assumed that sexual partners of index cases have not left the
113 population since their last sexual contact. The entries of the WNW matrix can be computed
114 using the following algorithm:

- 115 1. Consider index cases ($I_{S,i'j'}, I_{A,i'j'}$) who can notify their most recent sexual partners that
116 are infected ($I_{S,ij}, I_{A,ij}, I_{S,n,ij}, I_{A,n,ij}$).
- 117 2. Compute the average duration from infection of an index case until diagnosis: $D_{S,i'} = \frac{1}{\sigma_{i'} + \tau_{i'}}$
118 and $D_{A,i'} = \frac{1}{\gamma_{i'} + \tau_{i'}}$.
- 119 3. Compute the probability that an index case's most recent sexual contact was with their
120 infector: $p_X = e^{-c_{i'j'} D_{X,i'}}$, with $X = \{S, A\}$.

- 121 (a) Determine the type of infector based on the index case's force of infection.
- 122 (b) Compute the probability that the infection has not yet been cleared in the infector.
- 123 4. With probability $1 - p_X$, the index case's most recent sexual contact was with an infectee
- 124 or a other individual.
- 125 (a) Determine the type of infectee and other individual based on the index case's force
- 126 of infection.
- 127 (b) Compute the probability that the infection has not yet been cleared in the infectee or
- 128 the other individual.

129 Finally, we multiplied the WNW matrix with the numbers for each index case, the index cases'

130 rate of diagnoses as defined by $\sigma_{i'}$ and $\tau_{i'}$, and the index cases' proportion of treated partners $f_{P,i'}$.

131 Summing over all sexual partners of index cases, we obtained the rates $\kappa_{S,ij}$ and $\kappa_{A,ij}$ at which

132 symptomatically and asymptotically infected partners of index cases are notified, respectively.

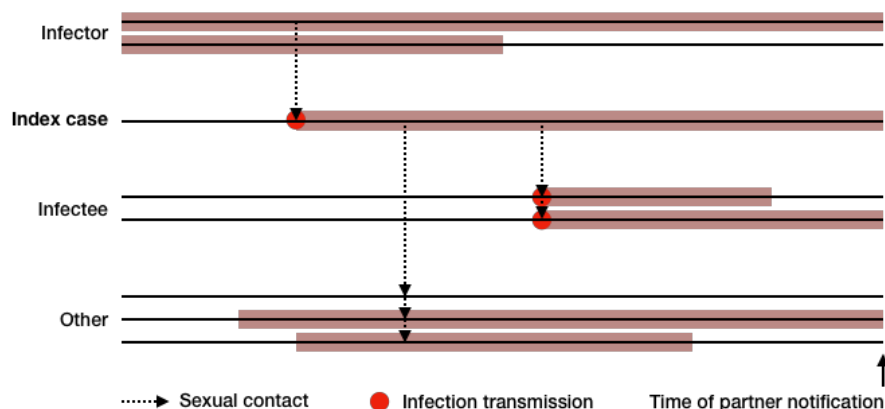


Figure 2. Schematic illustration of partner notification. An index case can either notify their infector (from whom they got infected), an infectee (who got infected by the index case), or another individual (who can either be infected or not). Infector, infectee and other infected individuals can clear the infection before they are notified.

133 Data and parameter priors

134 We estimated sexual behaviour parameters and chlamydia prevalence from Natsal-3, a population-

135 based probability sample survey of sexual attitudes and lifestyles conducted among the resident

136 population in Great Britain from 2010 to 2012 (Erens et al., 2013; Mercer et al., 2013). The

137 full sample consists of 15,162 women and men aged 16–74 years. A subsample of participants

138 aged 16–44 years who reported at least one sexual partner over their lifetime were asked to

139 provide urine samples, resulting in laboratory confirmed chlamydia test results from 2,665

140 women and 1,885 men (Sonnenberg et al., 2013). We restricted our analysis to 16–34 years old

141 women ($n = 2,138$) and men ($n = 1,533$), which corresponds to the considered age range in the

142 transmission model. We used individual weights to adjust for unequal selection probabilities

143 and to correct for the age, gender and regional profiles in the survey sample. The full datasets of

144 both surveys are available from the UK Data Service Archive at the University of Essex (<http://ukdataservice.ac.uk>, study number SN7799). The sexual behaviour parameters

145 (p and c_{ij}) were estimated from Natsal-3 using a maximum likelihood method as described

146 previously (Althaus et al., 2012a). For the other model parameters, we either used appropriate

147 prior distributions based on literature values or uninformed priors (Table 1).

148

Table 1. Prior and posterior distributions of model parameters. Parameters μ and v_i were fixed.

Parameter	Description	Sex	Reference	Prior distribution	Prior (mean, IQR)	Posterior (mean, IQR)
$1/\mu$	Age range of population (16–34 year olds)	–	–	–	19 y	–
p	Proportion high sexual activity group	–	Estimated from Natsal-3	Multivariate normal	6.7% (5.5%–8.2%)	6.7% (6.5%–7.4%)
ε	Sexual mixing coefficient	–	–	$\mathcal{U}(0, 1)$	0.5 (0.25–0.75)	0.43 (0.28–0.55)
c_{11}	Opposite-sex partner change rate (low)	Female	Estimated from Natsal-3	Multivariate normal	0.41 (0.38–0.44) y^{-1}	0.41 (0.40–0.42) y^{-1}
c_{21}	Opposite-sex partner partner change rate (low)	Male	Estimated from Natsal-3	Multivariate normal	0.41 (0.38–0.44) y^{-1}	0.41 (0.40–0.42) y^{-1}
c_{12}	Opposite-sex partner partner change rate (high)	Female	Estimated from Natsal-3	Multivariate normal	5.09 (4.60–5.63) y^{-1}	5.1 (4.9–5.2) y^{-1}
c_{22}	Opposite-sex partner partner change rate (high)	Male	Estimated from Natsal-3	Multivariate normal	5.09 (4.60–5.63) y^{-1}	5.1 (4.9–5.2) y^{-1}
β_{111}	Per partnership transmission probability (low)	Female	–	$\mathcal{U}(\beta_{122}, 1)$	75% (62%–93%)	80% (62%–93%)
β_{211}	Per partnership transmission probability (low)	Male	–	$\mathcal{U}(\beta_{122}, 1)$	75% (62%–93%)	94% (87%–97%)
β_{112}	Per partnership transmission probability (low-high)	Female	–	$\sqrt{\beta_{111}\beta_{122}}$	59% (39%–81%)	65% (48%–81%)
β_{212}	Per partnership transmission probability (low-high)	Male	–	$\sqrt{\beta_{211}\beta_{222}}$	59% (39%–81%)	86% (77%–94%)
β_{122}	Per partnership transmission probability (high)	Female	–	$\mathcal{U}(0, 1)$	50% (25%–75%)	55% (36%–75%)
β_{222}	Per partnership transmission probability (high)	Male	–	$\mathcal{U}(0, 1)$	50% (25%–75%)	81% (68%–91%)
f_1	Frequency of symptomatic infection	Female	–	$\mathcal{U}(0, 1)$	50% (25%–75%)	10% (4%–18%)
f_2	Frequency of symptomatic infection	Male	–	$\mathcal{U}(0, 1)$	50% (25%–75%)	28% (13%–44%)
$1/\sigma_1$	Average duration of symptomatic infection	Female	Davies et al. (2014)	$\mathcal{U}(14, 42)$ d	28 (21–35) d	28 (21–35) d
$1/\sigma_2$	Average duration of symptomatic infection	Male	Davies et al. (2014)	$\mathcal{U}(14, 42)$ d	28 (21–35) d	28 (21–35) d
$1/\gamma_1$	Average duration of asymptomatic infection	Female	Price et al. (2013)	$1/\Gamma(100, 135.1)$ y	1.36 (1.27–1.45) y	1.37 (1.29–1.48) y
$1/\gamma_2$	Average duration of asymptomatic infection	Male	Lewis et al. (2017)	$1/\Gamma(2, 4.8)$ y	4.78 (1.78–5.00) y	1.59 (1.23–2.11) y
$1/\omega_1$	Average duration of immunity	Female	Omori et al. (2018); Smid et al. (2019)	$\Gamma(2, 0.4)$ y	5.0 (2.41–6.74) y	5.1 (3.4–7.3) y
$1/\omega_2$	Average duration of immunity	Male	Omori et al. (2018); Smid et al. (2019)	$\Gamma(2, 0.4)$ y	5.0 (2.41–6.74) y	5.0 (3.1–7.8) y
τ_1	Treatment rate	Female	Chandra et al. (2017)	$\Gamma(1, 3.3)$ y^{-1}	0.3 (0.09–0.42) y^{-1}	0.08 (0.03–0.15) y^{-1}
τ_2	Treatment rate	Male	Chandra et al. (2017)	$\Gamma(1, 10)$ y^{-1}	0.1 (0.03–0.14) y^{-1}	0.05 (0.02–0.10) y^{-1}
$f_{p,1}$	Number of treated partners	Female	Public Health England (2016)	Beta(5,4,4)	0.53 (0.42–0.64)	0.52 (0.40–0.62)
$f_{p,2}$	Number of treated partners	Male	Public Health England (2016)	Beta(5,4,4)	0.53 (0.42–0.64)	0.49 (0.38–0.61)
$1/v_1$	Time to partner treatment	Female	Public Health England (2016)	–	3.2 d	–
$1/v_2$	Time to partner treatment	Male	Public Health England (2016)	–	3.2 d	–

The first subscript i refers to sex (1: female; 2: male) and the second subscript j refers to the sexual activity group (1: low; 2: high).

149 **Model calibration, scenarios and APT**

150 We calibrated the model to chlamydia prevalence using Approximate Bayesian Computation
151 (ABC) (Beaumont, 2010). We sampled 10^6 parameter sets from the prior distributions (Table
152 1), and used a basic rejection algorithm to select the parameter sets that result in chlamydia
153 prevalences within a specified range (Fingerhuth et al., 2016). We considered the following
154 calibration scenarios:

- 155 1. Baseline scenario: Calibration to sex- and activity group-specific prevalence in the presence
156 (current situation) and absence of control interventions.
- 157 2. Calibration to sex-specific prevalence in the presence (current situation) and absence of
158 control interventions.
- 159 3. Calibration to sex-specific prevalence in the presence of control interventions (current
160 situation).

161 The estimated chlamydia prevalence from Natsal-3 was 2.2% (95% CI: 1.6%–2.8%) in women
162 and 1.5% (95% CI: 1.0%–2.2%) in men. For the calibration to sex-specific prevalence in presence
163 of control interventions, we accepted those parameter sets where the modelled prevalence was
164 within the 95% CI of these estimates. For the calibration to activity group-specific prevalence in
165 present of control interventions, we assumed that the prevalence in the high activity group cannot
166 exceed 15% in both women and men. Finally, for the calibration to sex-specific prevalence
167 in absence of control interventions, we assumed that the prevalence cannot exceed the point
168 estimate from Natsal-3 by more than twofold (Rönn et al., 2019).

169 We simulated the effects of APT on chlamydia transmission by 1) increasing the number of
170 treated partners by 5%, 10%, 15%, 20% and 25%, and 2) reducing the time to partner treatment
171 by 1, 2 and 3 days compared to standard PN. We then calculated the relative reduction in
172 prevalence 5 years after the implementation of APT.

173 We considered scenario 1 as our baseline scenario in the main text and provide all results
174 for scenario 2 and 3 in Supporting Information. Model simulations were performed in the R
175 software environment for statistical computing (R Core Team, 2016) using the function *ode*
176 from the package *deSolve* (Soetaert et al., 2010). Simulations were run on UBELIX (<http://www.id.unibe.ch/hpc>), the high-performance computing cluster at the University of Bern.
177 All data and R code files are available on GitHub: [https://github.com/calthaus/](https://github.com/calthaus/chlamydia-pn)
178 *chlamydia-pn*.
179

180 **RESULTS**

181 **Model calibration**

182 Calibrating the transmission model to the three scenarios resulted in different posterior distribu-
183 tions of chlamydia prevalence (Figs 3, S1 and S2) and model parameters (Table 1, Figs 4, S3 and
184 S4). In our baseline scenario (scenario 1), the median prevalence of chlamydia in presence of
185 control interventions was 1.84% (95% credible interval, CrI: 1.60%–2.62%) in women and 1.78%
186 (95% CrI: 1.13%–2.14%) in men. The per partnership transmission probabilities were higher
187 for women (male-female transmission) than men (female-male transmission). Sexual mixing
188 between sexual activity groups was weakly assortative (median: 0.43, interquartile range (IQR):
189 0.28–0.55). 10% (IQR: 4%–18%) of infections were symptomatic in women, compared to 28%
190 (IQR: 13%–44%) in men. The average duration of asymptomatic infection was slightly longer
191 in men (580 d, IQR: 450–470 days) than women (500 d, IQR: 470–540 days). Treatment rates
192 were 0.08 y^{-1} (IQR: $0.03\text{--}0.15 \text{ y}^{-1}$) and 0.05 y^{-1} (IQR: $0.02\text{--}0.10 \text{ y}^{-1}$) for women and men,

193 respectively. For all other parameters, the posterior distributions did not differ substantially from
194 the prior distribution. The alternative calibration scenarios (scenario 2 and 3) were characterised
195 by more assortative mixing, longer durations of asymptomatic infection, and shorter durations of
196 immunity (Figs S3 and S4). Together, this resulted in a somewhat unrealistically high and low
197 chlamydia prevalence in the high and low sexual activity group, respectively (Figs S1 and S2).
198 Hence, we concluded that the baseline scenario (scenario 1) seems most adequate to describe
199 chlamydia transmission between people of the opposite-sex and to quantify the effects of PN.

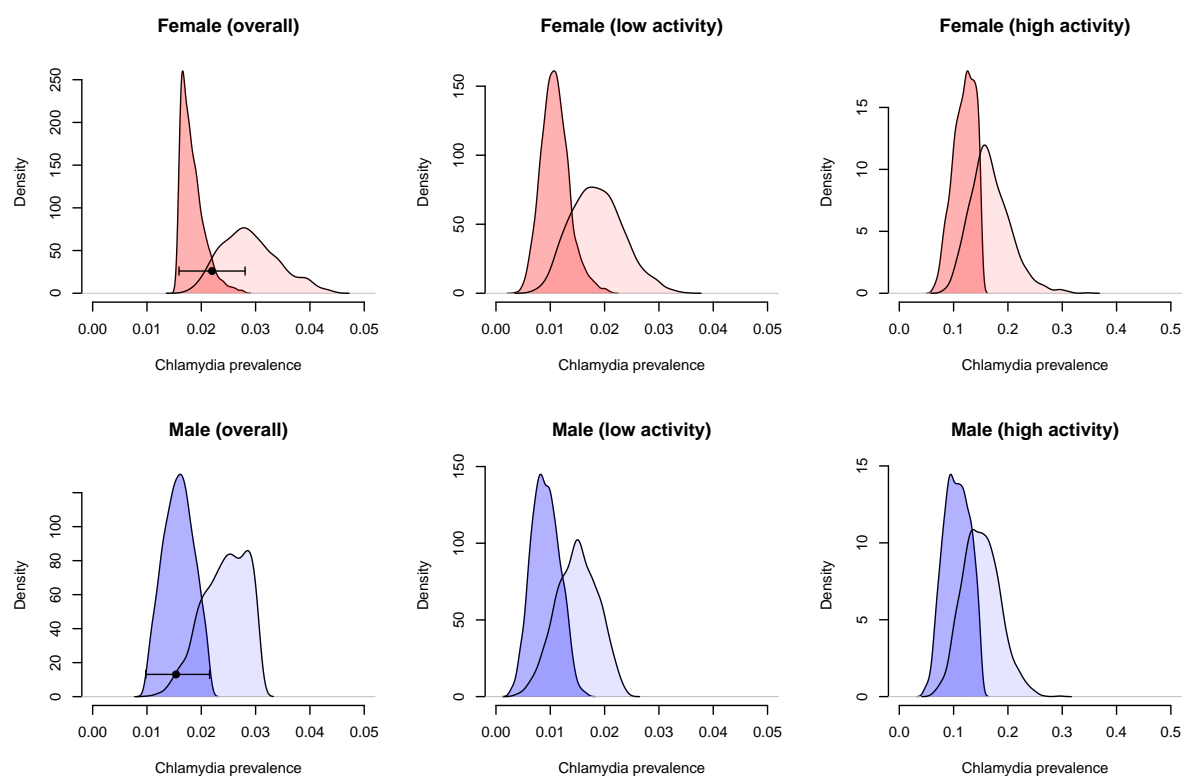


Figure 3. Posterior distributions of chlamydia prevalence (baseline scenario 1). Modelled prevalence in the presence and absence of interventions (asymptomatic treatment and partner notification) is shown as dark and light shaded areas. The black dot represents the prevalence for 16–34 year olds as estimated from Natsal-3 (together with 95% confidence intervals).

200 **Who-Notifies-Whom (WNW) matrix**

201 The PN module allowed us to construct the WNM matrix for female and male index cases (Tables
202 2 and 3). This matrix provides the chlamydia positivity in partners of index cases, stratified by
203 the sexual activity group and the infection status of both index case and partner. Furthermore,
204 we calculated the proportion of PNs that were initiated and the proportion of positive partners
205 that were notified by each index case. For example, the overall chlamydia positivity in a male
206 sexual partner of a female symptomatic index case of the low sexual activity group is 90%
207 (IQR: 88%–93%) (most left column in Table 2). Most sexual partners of these index cases are
208 asymptomatic men of the high sexual activity group (71%, IQR: 68%–74%). Symptomatically
209 infected women of the low sexual activity group notify 28% (IQR: 16%–40%) of all male sexual
210 partners. Due to the high chlamydia positivity in these partners, this index-partner combination
211 contributes to 42% (IQR: 29%–51%) of all PNs that identify a chlamydia-positive partner. In
212 summary, we can show that chlamydia positivity is highest in sexual partners of symptomatic

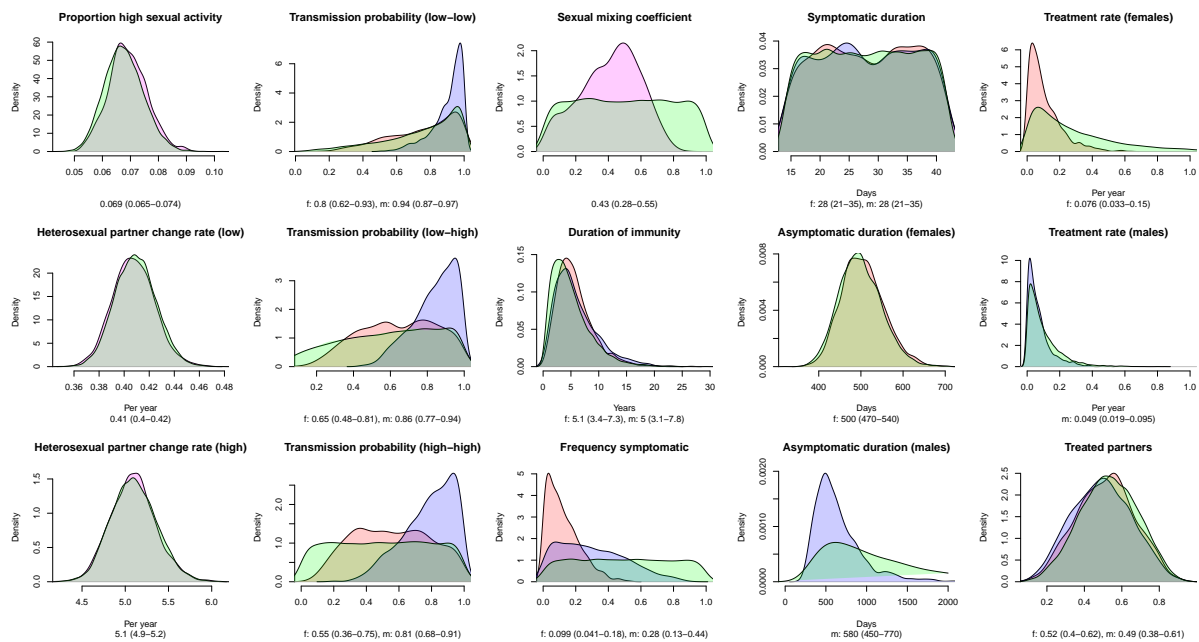


Figure 4. Prior and posterior distributions of model parameters (baseline scenario 1). Prior (green) and posterior distributions for females (red) and males (blue). The sexual mixing coefficient is the same for both sexes. Numbers below the horizontal axes represent the median and interquartile range.

213 index cases that belong to the low sexual activity group. The notified partners are typically
 214 asymptomatic and belong to the high sexual activity group, i.e., are those infected individuals
 215 that will contribute most to onward transmission. This general pattern is even more accentuated
 216 if index cases are men (3).

Partner (male)		Index (female)		Asymptomatic	
		Symptomatic	High	Low	High
Overall chlamydia positivity in partner		90% (88%–93%)	73% (68%–79%)	29% (21%–36%)	31% (26%–37%)
Proportion symptomatic partners	Low	0% (0%–0%)	0% (0%–0%)	0% (0%–0%)	0% (0%–1%)
	High	1% (0%–1%)	1% (0%–2%)	0% (0%–0%)	0% (0%–1%)
Proportion asymptomatic partners	Low	17% (15%–21%)	6% (4%–9%)	7% (5%–10%)	10% (7%–15%)
	High	71% (68%–74%)	65% (60%–71%)	21% (16%–26%)	19% (15%–23%)
Proportion of all notified partners		28% (16%–40%)	28% (16%–40%)	22% (10%–36%)	18% (8%–29%)
Proportion of all notified and positive partners		42% (29%–51%)	33% (24%–42%)	10% (4%–23%)	9% (4%–18%)

Table 2. Who-Notifies-Whom (WNW) matrix for female index cases (scenario 1). Example: The overall chlamydia positivity in a male sexual partner of a female symptomatic index case of the low sexual activity group is 90%. The same index cases notify 28% of all male sexual partners, contributing to 42% of all notified and positive partners. Numbers are given as median and interquartile range.

217 APT intervention

218 Simulating the effects of APT on chlamydia transmission illustrates that it can be an effective
 219 method to reduce prevalence at the population-level (Fig 5). Increasing the numbers of treated
 220 partners from current levels in Britain (0.51, 95% CrI: 0.21–0.80, see Table 1) can result in
 221 a considerable reduction in prevalence after 5 years. For example, an increase of 25% would
 222 reduce chlamydia prevalence by 18% (95% CrI: 5%–44%) in both women and men. The relative
 223 reduction is slightly higher in women than men, and in high sexual activity individuals compared

Partner (female)		Index (male)		Asymptomatic	
		Symptomatic		Low	High
		Low	High	Low	High
Overall chlamydia positivity in partner		91% (88%–93%)	79% (75%–83%)	20% (14%–29%)	47% (41%–53%)
Proportion symptomatic partners	Low	0% (0%–0%)	0% (0%–0%)	0% (0%–0%)	0% (0%–0%)
	High	0% (0%–1%)	0% (0%–1%)	0% (0%–0%)	0% (0%–0%)
Proportion asymptomatic partners	Low	20% (17%–24%)	9% (6%–12%)	7% (6%–9%)	18% (14%–23%)
	High	70% (66%–73%)	69% (63%–74%)	13% (8%–21%)	28% (24%–32%)
Proportion of all notified partners		40% (31%–48%)	41% (30%–49%)	7% (2%–18%)	6% (2%–15%)
Proportion of all notified and positive partners		48% (40%–54%)	42% (34%–49%)	2% (0%–6%)	4% (1%–10%)

Table 3. Who-Notifies-Whom (WNW) matrix for male index cases (scenario 1). Example: The overall chlamydia positivity in a female sexual partner of a male symptomatic index case of the low sexual activity group is 91%. The same index cases notify 40% of all female sexual partners, contributing to 48% of all notified and positive partners. Numbers are given as median and interquartile range.

224 to low sexual activity individuals. The results show that the effects of APT on chlamydia
 225 transmission mainly stem from increasing the numbers of treated partners, as reducing the time
 226 to partner treatment from current levels (3.2 d, see Table 1) had only minor effects on chlamydia
 227 prevalence. Compared to the baseline scenario (scenario 1), the effects of APT were somewhat
 228 lower in scenario 2 (Fig S6) but higher in scenario 3 (Fig S5).

229 DISCUSSION

230 Using a novel chlamydia transmission model, we explored the expected effects of APT on
 231 chlamydia prevalence compared to standard PN in Britain. We found that chlamydia positivity is
 232 highest in partners of symptomatic index cases with low sexual activity, whereas the infected
 233 partners are typically asymptomatic and highly sexually active. Conducting PN for this particu-
 234 lar index-partner combination will thus be most effective for preventing further transmission.
 235 Increasing the number of treated partners from current levels by 25% would reduce chlamydia
 236 prevalence by 18% (95% CrI: 5%-44%) in both women and men within 5 years. In contrast,
 237 reducing the time to partner treatment alone had a minor effect on reducing prevalence. Together,
 238 these results suggest that PN typically identifies sexual partners that are likely to further transmit
 239 chlamydia, and that APT in particular has the potential to further reduce prevalence through an
 240 increase in PN uptake.

241 The main strength of our model is the PN module, which allowed us to construct a WNW
 242 matrix and look into the process of PN for chlamydia in great detail. In contrast to other
 243 modelling studies, we used the PN module to identify the index-partner combinations that result
 244 in the highest chlamydia positivity in partners and yield the greatest impact on reducing further
 245 transmission. Compared to other deterministic, population-based modelling approaches that
 246 limit PN to current sexual partners (Heijne et al., 2011; Rönn et al., 2019), our model allowed us
 247 to track the most recent partner for all index cases. Using a Bayesian modelling framework, we
 248 were also able to account for the considerable uncertainty in model parameters. Consideration of
 249 the specific distribution of chlamydia infections according to an individual’s sexual activity, has
 250 been suggested as an important aspect of STI transmission models (Althaus et al., 2012b). We
 251 therefore calibrated the model, not only to the current chlamydia prevalence in women and men,
 252 but also to chlamydia prevalence in different sexual activity groups and the expected chlamydia
 253 prevalence in the absence of asymptomatic testing and PN. The modelling framework can be
 254 further adapted for calibration to additional epidemiological data, such as chlamydia positivity
 255 in partners of index cases, and can therefore be tailored to the results of randomised controlled
 256 trials.

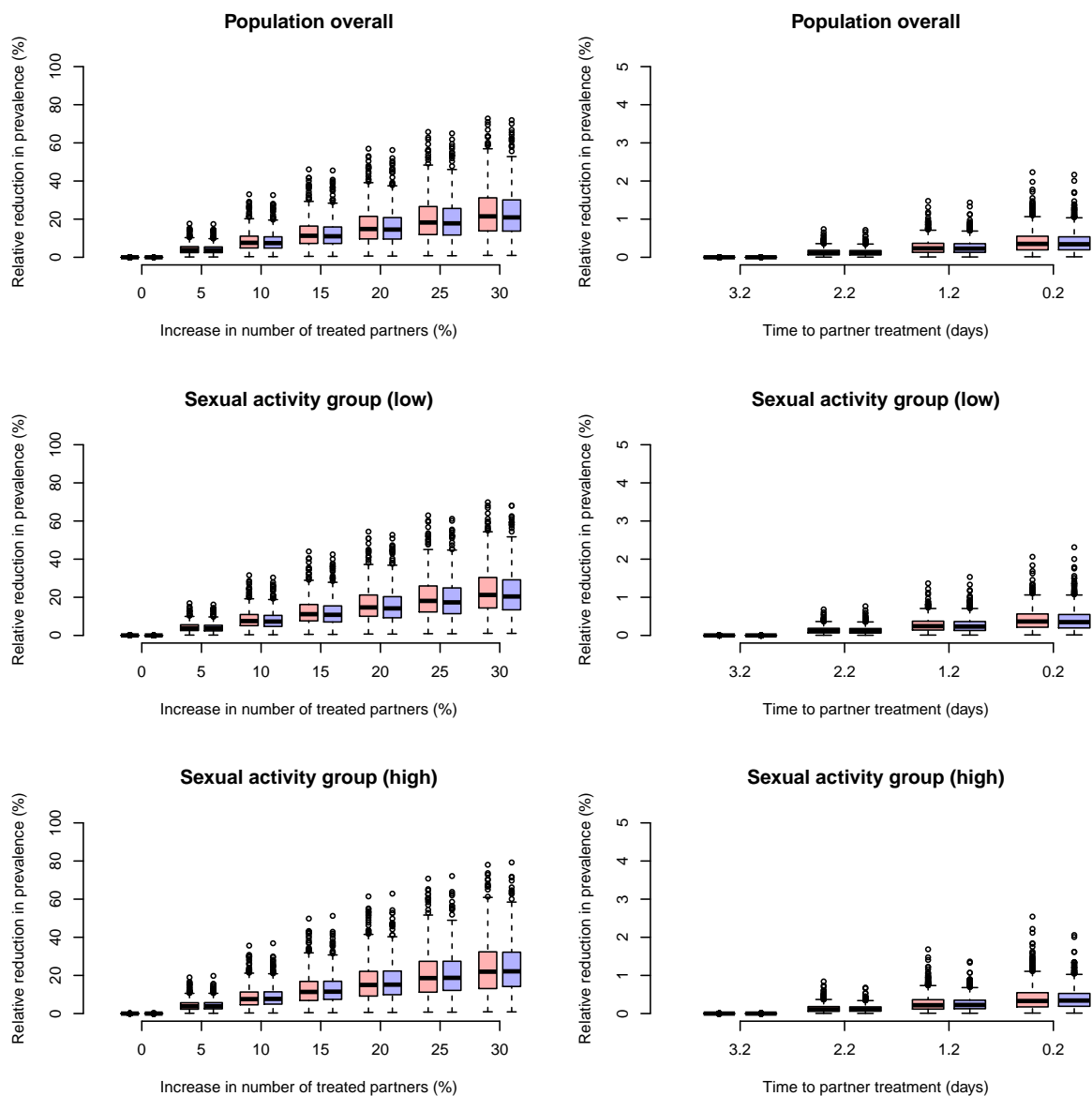


Figure 5. Projected effect of accelerated partner therapy (APT) on chlamydia prevalence after 5 years (baseline scenario 1). APT is modelled as an increase in the number of treated partners (left panels) or a reduction in the time to partner treatment (right panels). Changes in prevalence are given for females (red) and males (blue). Note the difference in scales of the axes between the left and right panels.

257 Our study has some limitations. First, we considered notification of the index case's most
 258 recent partner only. This was a necessary simplification of our modelling framework. As the
 259 average number of notified partners is typically below one, we expect that including notification
 260 of additional partners in our model would not substantially affect our results. Second, we
 261 did not consider reinfection of index case cases by untreated partners. The modelled effects
 262 of APT on reducing chlamydia prevalence could thus be considered as best-case scenarios.
 263 Third, we did not consider different age groups and age-specific sexual mixing patterns (Smid
 264 et al., 2018), men having sex with men (MSM) or different ethnic groups in our model. As
 265 most chlamydia infections are found in the population of young opposite-sex partners, and
 266 because sexual mixing is arguably the most critical aspect for PN, we do not think that ignoring

267 these additional complexities would substantially impact our results. Finally, there remains
268 considerable uncertainty with respect to test uptake, chlamydia diagnoses (Chandra et al., 2017)
269 and their impact on chlamydia prevalence (Lewis and White, 2018; Smid et al., 2019). We
270 addressed this problem by choosing broad prior distributions for the treatment rate in our model.

271 The modelled chlamydia positivity in partners of index cases, which is typically not reported
272 for modelling studies, is in good agreement with empirical data from Britain that show an overall
273 positivity of 62% (Public Health England, 2016) and 69% (Public Health England, 2018). While
274 these values correspond to the overall positivity, the WNW matrix highlights that chlamydia
275 positivity is expected to be higher in partners of symptomatic index cases, but lower in partners
276 of asymptomatic index cases. The precise contribution of PN on limiting the spread of chlamydia
277 remains a matter of debate (Althaus et al., 2014; Rönn et al., 2017). In this study, and similar to
278 the results from Rönn et al. (2019), we found that PN in general can play an important role in
279 reducing the burden of chlamydia.

280 We showed that APT could effectively reduce ongoing chlamydia transmission in Britain
281 through an increase in the numbers of partners treated. Current levels of PN uptake (the number
282 of contacts per index case who were reported as having attended a sexual health service within
283 four working weeks of the date of the PN consultation) are below the standard of 0.6 (Public
284 Health England, 2018) which suggests that methods that aim to increase uptake to this level and
285 beyond should be considered for PN. Furthermore, it will be important to continue monitoring
286 the levels of PN uptake over time. In contrast to increasing PN uptake, reducing the time to
287 partner treatment appears to be less critical for increasing the effectiveness of PN. Average times
288 for attending health services are already quite short (3.2 days, (Public Health England, 2016)),
289 but APT might still offer substantial benefits in situations where there are longer delay periods.
290 Our study highlights that PN for chlamydia is a highly effective intervention due to its targeted
291 approach. With the WNW matrix, we can show that PN naturally identifies the most important
292 partners of index cases: asymptotically infected individuals from the high sexual activity
293 group who thus remain infected for a long time period and have a high sexual partner change
294 rate.

295 A detailed understanding of the effects of PN on chlamydia transmission is critical for
296 implementing optimal control strategies. The presented modelling framework can be used to
297 study the population-level effects of different PN interventions, such as APT, in considerable
298 detail, and is flexible enough to be readily adapted to different populations and intervention
299 scenarios. Our results suggest that APT, through an increase in the number of partners treated,
300 would be an effective method to reduce ongoing chlamydia transmission in Britain.

301 **Acknowledgments**

302 Calculations were performed on UBELIX (<http://www.id.unibe.ch/hpc>), the HPC
303 cluster at the University of Bern. Natsal-3 is a collaboration between University College
304 London, London School of Hygiene and Tropical Medicine, National Centre for Social Research,
305 Public Health England, and the University of Manchester. We thank the study participants, the
306 team of interviewers from NatCen Social Research, and operations and computing staff from
307 NatCen Social Research. The Natsal-3 study was approved by the Oxfordshire Research Ethics
308 Committee A (Ref: 10/H0604/27).

309 **Funding**

310 This study was funded by the National Institute for Health Research (NIHR) Programme Grants
311 for Applied Research (Grant Reference Number RP-PG-0614-20009). The views expressed are
312 those of the authors and not necessarily those of the NIHR or the Department of Health and
313 Social Care.

314 **Competing interests**

315 None.

316 **Author contributions**

317 All authors conceived and designed the study. CLA developed the mathematical model, per-
318 formed model simulations, and wrote the manuscript. All authors contributed to the interpretation
319 of the results, commented on the manuscript, and approved the final version of the manuscript.

320 **REFERENCES**

- 321 Althaus, C., Turner, K., Mercer, C., Auguste, P., Roberts, T., Bell, G., Herzog, S., Cassell, J.,
322 Edmunds, J., White, P., Ward, H., and Low, N. (2014). Effectiveness and cost-effectiveness of
323 traditional and new partner notification technologies for curable sexually transmitted infections:
324 observational study, systematic reviews and mathematical modelling. *Health Technol Assess*,
325 18(2).
- 326 Althaus, C. L., Heijne, J. C., Herzog, S. A., Roellin, A., and Low, N. (2012a). Individual
327 and population level effects of partner notification for Chlamydia trachomatis. *PLoS One*,
328 7(12):e51438.
- 329 Althaus, C. L., Turner, K. M. E., Schmid, B. V., Heijne, J. C. M., Kretzschmar, M., and Low, N.
330 (2012b). Transmission of Chlamydia trachomatis through sexual partnerships: a comparison
331 between three individual-based models and empirical data. *J R Soc Interface*, 9(66):136–146.
- 332 Beaumont, M. A. (2010). Approximate Bayesian Computation in Evolution and Ecology. *Annual*
333 *Review of Ecology, Evolution, and Systematics*, 41(1):379–406.
- 334 Cates, W. J. and Wasserheit, J. N. (1991). Genital chlamydial infections: epidemiology and
335 reproductive sequelae. *Am J Obstet Gynecol*, 164(6 Pt 2):1771–1781.
- 336 Chandra, N. L., Soldan, K., Dangerfield, C., Sile, B., Duffell, S., Talebi, A., Choi, Y. H., Hughes,
337 G., and Woodhall, S. C. (2017). Filling in the gaps: estimating numbers of chlamydia tests and
338 diagnoses by age group and sex before and during the implementation of the English National
339 Screening Programme, 2000 to 2012. *Euro Surveill*, 22(5).
- 340 Davies, B., Anderson, S.-J., Turner, K. M. E., and Ward, H. (2014). How robust are the natural
341 history parameters used in chlamydia transmission dynamic models? A systematic review.
342 *Theor Biol Med Model*, 11:8.
- 343 Erens, B., Phelps, A., Clifton, S., Mercer, C. H., Tanton, C., Hussey, D., Sonnenberg, P.,
344 Macdowall, W., Field, N., Datta, J., Mitchell, K., Copas, A. J., Wellings, K., and Johnson,
345 A. M. (2013). Methodology of the third British National Survey of Sexual Attitudes and
346 Lifestyles (Natsal-3). *Sexually Transmitted Infections*, pages sextrans–2013–051359.
- 347 Estcourt, C., Sutcliffe, L., Cassell, J., Mercer, C. H., Copas, A., James, L., Low, N., Horner, P.,
348 Clarke, M., Symonds, M., Roberts, T., Tsourapas, A., and Johnson, A. M. (2012). Can we
349 improve partner notification rates through expedited partner therapy in the UK? Findings from
350 an exploratory trial of Accelerated Partner Therapy (APT). *Sex Transm Infect*, 88(1):21–6.
- 351 Estcourt, C. S., Howarth, A. R., Copas, A., Low, N., Mapp, F., Woode Owusu, M., Flowers, P.,
352 Roberts, T., Mercer, C. H., Wayal, S., Symonds, M., Nandwani, R., Saunders, J., Johnson,
353 A. M., Pothoulaki, M., Althaus, C., Pickering, K., McKinnon, T., Brice, S., Comer, A.,
354 Tostevin, A., Ogwulu, C. D., Vojt, G., and Cassell, J. A. (2020). Accelerated partner therapy
355 (apt) partner notification for people with chlamydia trachomatis: protocol for the limiting
356 undetected sexually transmitted infections to reduce morbidity (lustrum) apt cross-over cluster
357 randomised controlled trial. *BMJ Open*, 10(3):e034806.
- 358 Estcourt, C. S., Sutcliffe, L. J., Copas, A., Mercer, C. H., Roberts, T. E., Jackson, L. J., Symonds,
359 M., Tickle, L., Muniina, P., Rait, G., Johnson, A. M., Aderogba, K., Creighton, S., and Cassell,

- 360 J. A. (2015). Developing and testing accelerated partner therapy for partner notification for
361 people with genital chlamydia trachomatis diagnosed in primary care: a pilot randomised
362 controlled trial. *Sex Transm Infect*, 91(8):548–54.
- 363 Ferreira, A., Young, T., Mathews, C., Zunza, M., and Low, N. (2013). Strategies for partner
364 notification for sexually transmitted infections, including HIV. *Cochrane Database Syst Rev*,
365 (10):CD002843.
- 366 Fingerhuth, S. M., Bonhoeffer, S., Low, N., and Althaus, C. L. (2016). Antibiotic-Resistant
367 *Neisseria gonorrhoeae* Spread Faster with More Treatment, Not More Sexual Partners. *PLoS*
368 *Pathog*, 12(5):e1005611.
- 369 Garnett, G. P., Mertz, K. J., Finelli, L., Levine, W. C., and St Louis, M. E. (1999). The
370 transmission dynamics of gonorrhoea: modelling the reported behaviour of infected patients
371 from Newark, New Jersey. *Philos Trans R Soc Lond B Biol Sci*, 354(1384):787–97.
- 372 Geisler, W. M., Lensing, S. Y., Press, C. G., and Hook, E. W. (2013). Spontaneous resolution
373 of genital *Chlamydia trachomatis* infection in women and protection from reinfection. *The*
374 *Journal of Infectious Diseases*, 207(12):1850–1856.
- 375 Golden, M. R., Kerani, R. P., Stenger, M., Hughes, J. P., Aubin, M., Malinski, C., and Holmes,
376 K. K. (2015). Uptake and population-level impact of expedited partner therapy (ept) on
377 chlamydia trachomatis and neisseria gonorrhoeae: the washington state community-level
378 randomized trial of ept. *PLoS Med*, 12(1):e1001777.
- 379 Golden, M. R., Whittington, W. L. H., Handsfield, H. H., Hughes, J. P., Stamm, W. E., Hogben,
380 M., Clark, A., Malinski, C., Helmers, J. R. L., Thomas, K. K., and Holmes, K. K. (2005).
381 Effect of expedited treatment of sex partners on recurrent or persistent gonorrhea or chlamydial
382 infection. *N Engl J Med*, 352(7):676–85.
- 383 Heijne, J. C. M., Althaus, C. L., Herzog, S. A., Kretzschmar, M., and Low, N. (2011). The role
384 of reinfection and partner notification in the efficacy of *Chlamydia* screening programs. *J*
385 *Infect Dis*, 203(3):372–7.
- 386 Lewis, J., Price, M. J., Horner, P. J., and White, P. J. (2017). Genital chlamydia trachomatis
387 infections clear more slowly in men than women, but are less likely to become established.
388 *The Journal of Infectious Diseases*, 216(2):237–244.
- 389 Lewis, J. and White, P. J. (2018). Changes in chlamydia prevalence and duration of infection es-
390 timated from testing and diagnosis rates in england: a model-based analysis using surveillance
391 data, 2000-15. *Lancet Public Health*, 3(6):e271–e278.
- 392 Low, N., Heijne, J. C. M., Herzog, S. A., and Althaus, C. L. (2014). Reinfection by untreated
393 partners of people treated for *Chlamydia trachomatis* and *Neisseria gonorrhoeae*: mathematical
394 modelling study. *Sex Transm Infect*, 90(3):254–6.
- 395 Mercer, C. H., Tanton, C., Prah, P., Erens, B., Sonnenberg, P., Clifton, S., Macdowall, W.,
396 Lewis, R., Field, N., Datta, J., Copas, A. J., Phelps, A., Wellings, K., and Johnson, A. M.
397 (2013). Changes in sexual attitudes and lifestyles in Britain through the life course and over
398 time: findings from the National Surveys of Sexual Attitudes and Lifestyles (Natsal). *Lancet*,
399 382(9907):1781–94.
- 400 Omori, R., Chemaitelly, H., Althaus, C. L., and Abu-Raddad, L. J. (2018). Does infection with
401 chlamydia trachomatis induce long-lasting partial immunity? insights from mathematical
402 modelling. *Sex Transm Infect*.
- 403 Organization, W. H. and on HIV/AIDS, J. U. N. P. (1999). *Sexually transmitted diseases: policies*
404 *and principles for prevention and care*. WHO/UNAIDS.
- 405 Price, M. J., Ades, A. E., Angelis, D. D., Welton, N. J., Macleod, J., Soldan, K., Turner, K.,
406 Simms, I., and Horner, P. J. (2013). Mixture-of-exponentials models to explain heterogeneity
407 in studies of the duration of *Chlamydia trachomatis* infection. *Stat Med*, 32(9):1547–60.

- 408 Public Health England (2016). Partner notification in chlamydia screening – National audit
409 report.
- 410 Public Health England (2018). NCSP 2017 audit report – Audit of standards: turnaround times,
411 partner notification and re-testing.
- 412 R Core Team (2016). *R: A Language and Environment for Statistical Computing*. R Foundation
413 for Statistical Computing, Vienna, Austria.
- 414 Roberts, T. E., Tsourapas, A., Sutcliffe, L., Cassell, J., and Estcourt, C. (2012). Is accelerated
415 partner therapy (apt) a cost-effective alternative to routine patient referral partner notification
416 in the uk? preliminary cost-consequence analysis of an exploratory trial. *Sex Transm Infect*,
417 88(1):16–20.
- 418 Rönn, M. M., Tuite, A. R., Menzies, N. A., Wolf, E. E., Gift, T. L., Chesson, H. W., Torrone,
419 E., Berruti, A., Mazzola, E., Galer, K., Hsu, K., and Salomon, J. A. (2019). The impact of
420 screening and partner notification on chlamydia in the united states, 2000-2015: Evaluation of
421 epidemiologic trends using a pair-formation transmission model. *Am J Epidemiol*.
- 422 Rönn, M. M., Wolf, E. E., Chesson, H., Menzies, N. A., Galer, K., Gorwitz, R., Gift, T., Hsu, K.,
423 and Salomon, J. A. (2017). The use of mathematical models of chlamydia transmission to
424 address public health policy questions. *Sexually Transmitted Diseases*, 44(5):278–283.
- 425 Rowley, J., Vander Hoorn, S., Korenromp, E., Low, N., Unemo, M., Abu-Raddad, L. J., Chico,
426 R. M., Smolak, A., Newman, L., Gottlieb, S., Thwin, S. S., Broutet, N., and Taylor, M. M.
427 (2019). Chlamydia, gonorrhoea, trichomoniasis and syphilis: global prevalence and incidence
428 estimates, 2016. *Bull World Health Organ*, 97(8):548–562P.
- 429 Smid, J., Althaus, C. L., and Low, N. (2019). Discrepancies between observed data and predic-
430 tions from mathematical modelling of the impact of screening interventions on Chlamydia
431 trachomatis prevalence. *Scientific Reports*, 9(1):7547.
- 432 Smid, J. H., Garcia, V., Low, N., Mercer, C. H., and Althaus, C. L. (2018). Age difference
433 between heterosexual partners in Britain: Implications for the spread of Chlamydia trachomatis.
434 *Epidemics*.
- 435 Soetaert, K., Petzoldt, T., and Setzer, R. W. (2010). Solving differential equations in R: package
436 deSolve. *Journal of Statistical Software*, 33(9):1–25.
- 437 Sonnenberg, P., Clifton, S., Beddows, S., Field, N., Soldan, K., Tanton, C., Mercer, C. H.,
438 da Silva, F. C., Alexander, S., Copas, A. J., Phelps, A., Erens, B., Prah, P., Macdowall, W.,
439 Wellings, K., Ison, C. A., and Johnson, A. M. (2013). Prevalence, risk factors, and uptake of
440 interventions for sexually transmitted infections in Britain: findings from the National Surveys
441 of Sexual Attitudes and Lifestyles (Natsal). *Lancet*, 382(9907):1795–806.

442 S1 SUPPORTING INFORMATION

443 S1.1 Model calibration

444 S1.1.1 Chlamydia prevalence

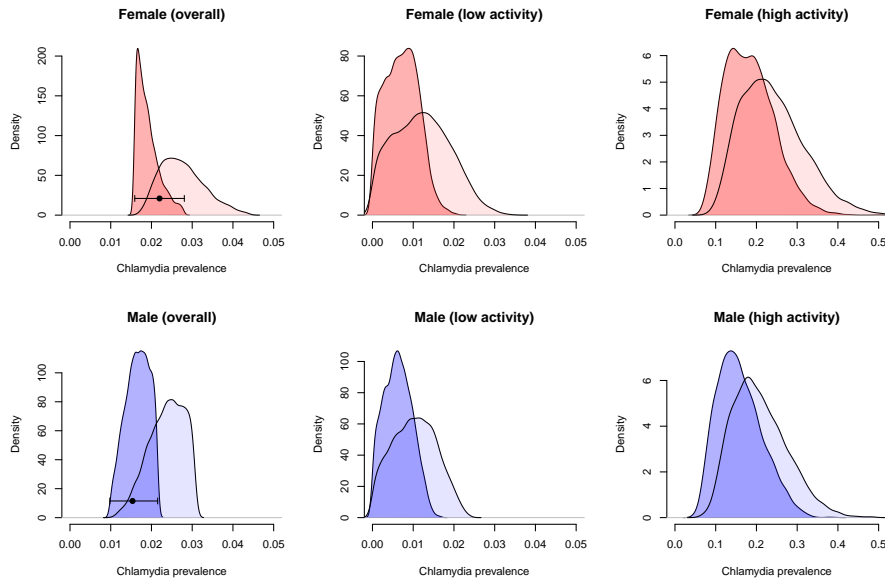


Figure S1. Posterior distributions of chlamydia prevalence (baseline scenario 2). Modelled prevalence in the presence and absence of interventions (asymptomatic treatment and partner notification) is shown as dark and light shaded areas. The black dot represents the prevalence for 16–34 year olds as estimated from Natsal-3 (together with 95% confidence intervals).

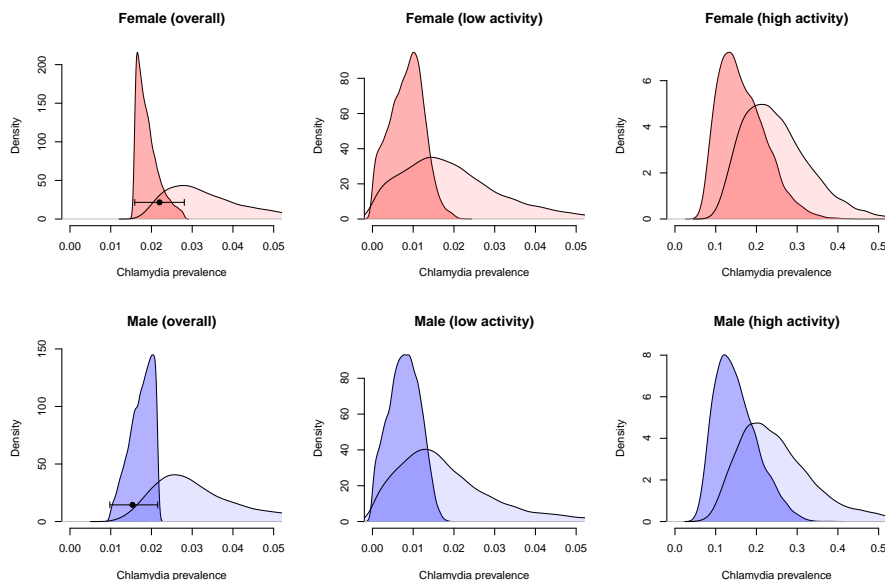


Figure S2. Posterior distributions of chlamydia prevalence (baseline scenario 3). Modelled prevalence in the presence and absence of interventions (asymptomatic treatment and partner notification) is shown as dark and light shaded areas. The black dot represents the prevalence for 16–34 year olds as estimated from Natsal-3 (together with 95% confidence intervals).

445 **S1.1.2 Posterior distributions**

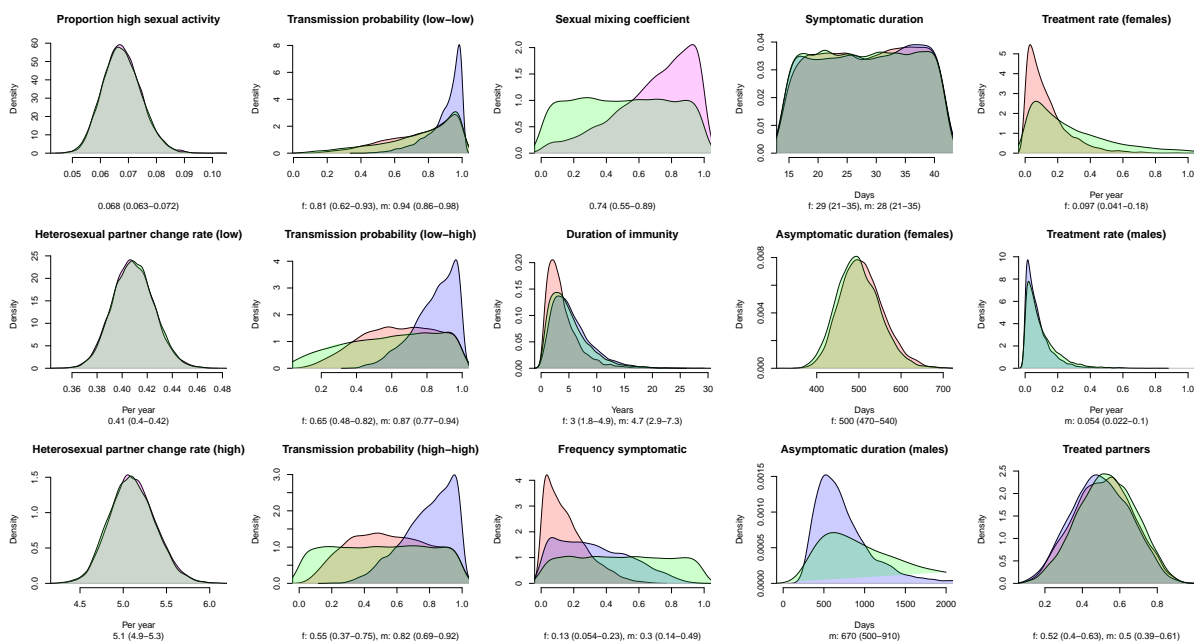


Figure S3. Prior and posterior distributions of model parameters (baseline scenario 2). Prior (green) and posterior distributions for females (red) and males (blue). The sexual mixing coefficient is the same for both sexes. Numbers below the horizontal axes represent the median and interquartile range.

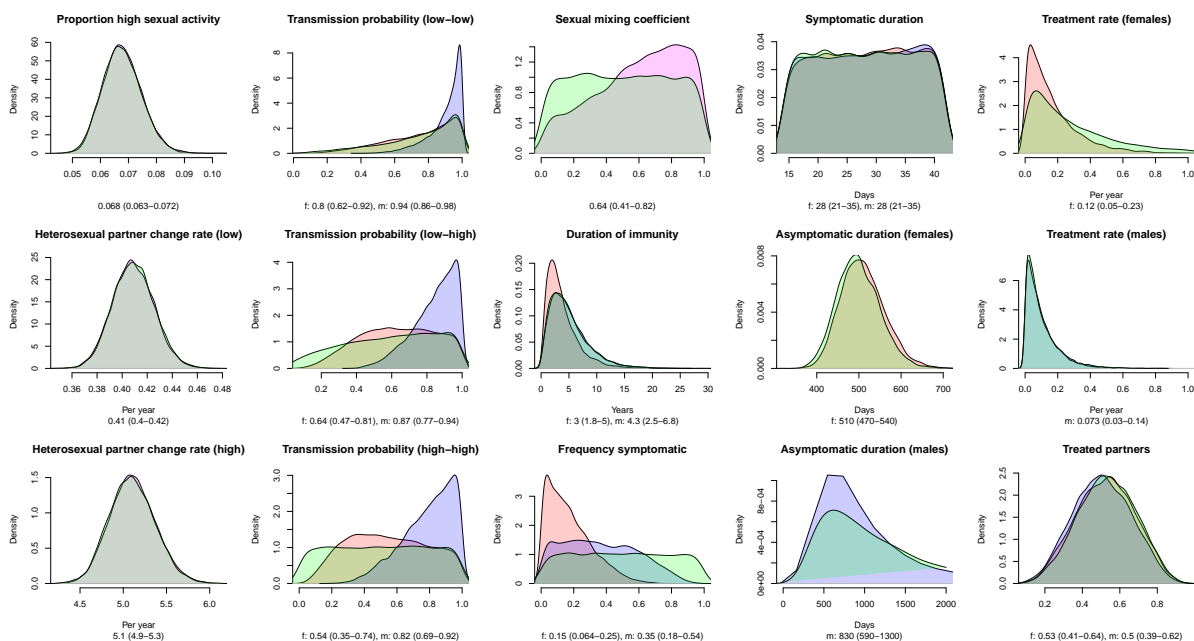


Figure S4. Prior and posterior distributions of model parameters (baseline scenario 3). Prior (green) and posterior distributions for females (red) and males (blue). The sexual mixing coefficient is the same for both sexes. Numbers below the horizontal axes represent the median and interquartile range.

446 **S1.1.3 Who-Notifies-Whom (WNW) matrix**

Partner (male)		Index (female)		Asymptomatic	
		Symptomatic		Low	High
		Low	High	Low	High
Uninfected		NA	NA	NA	NA
Symptomatic	Low	0% (0%–0%)	0% (0%–0%)	0% (0%–0%)	0% (0%–1%)
	High	1% (0%–2%)	1% (0%–2%)	0% (0%–0%)	0% (0%–1%)
Asymptomatic	Low	20% (16%–25%)	3% (1%–6%)	10% (7%–14%)	6% (3%–10%)
	High	68% (64%–72%)	68% (62%–74%)	24% (18%–31%)	23% (18%–28%)
Chlamydia positivity in partner		91% (88%–93%)	74% (68%–79%)	35% (27%–45%)	31% (26%–36%)
Proportion of notified partners		18% (9%–31%)	37% (20%–52%)	13% (5%–27%)	21% (9%–36%)
Proportion positive among notified		29% (15%–43%)	42% (27%–56%)	7% (2%–20%)	11% (4%–22%)

Table S1. Who-Notifies-Whom (WNW) matrix for female index cases (scenario 3). Numbers are given as median and interquartile range.

Partner (female)		Index (male)		Asymptomatic	
		Symptomatic		Low	High
		Low	High	Low	High
Uninfected		NA	NA	NA	NA
Symptomatic	Low	0% (0%–0%)	0% (0%–0%)	0% (0%–0%)	0% (0%–0%)
	High	0% (0%–1%)	0% (0%–1%)	0% (0%–0%)	0% (0%–1%)
Asymptomatic	Low	21% (18%–25%)	4% (2%–9%)	6% (5%–8%)	11% (5%–18%)
	High	67% (63%–71%)	71% (65%–76%)	8% (3%–14%)	32% (26%–38%)
Chlamydia positivity in partner		90% (87%–92%)	78% (73%–82%)	15% (9%–22%)	45% (40%–53%)
Proportion of notified partners		27% (16%–39%)	48% (34%–63%)	6% (2%–16%)	8% (3%–20%)
Proportion positive among notified		35% (21%–47%)	50% (38%–64%)	1% (0%–4%)	5% (2%–14%)

Table S2. Who-Notifies-Whom (WNW) matrix for male index cases (scenario 3). Numbers are given as median and interquartile range.

447

Partner (male)		Index (female)		Asymptomatic	
		Symptomatic		Low	High
		Low	High	Low	High
Uninfected		NA	NA	NA	NA
Symptomatic	Low	0% (0%–0%)	0% (0%–0%)	0% (0%–0%)	0% (0%–0%)
	High	1% (0%–1%)	1% (0%–2%)	0% (0%–0%)	0% (0%–1%)
Asymptomatic	Low	22% (17%–27%)	2% (1%–4%)	10% (7%–14%)	5% (2%–9%)
	High	66% (62%–70%)	69% (63%–74%)	21% (16%–26%)	24% (19%–29%)
Chlamydia positivity in partner		91% (88%–93%)	73% (68%–79%)	32% (24%–40%)	31% (26%–35%)
Proportion of notified partners		14% (6%–27%)	38% (22%–56%)	11% (4%–23%)	24% (10%–40%)
Proportion positive among notified		24% (12%–38%)	45% (31%–62%)	6% (2%–14%)	13% (5%–26%)

Table S3. Who-Notifies-Whom (WNW) matrix for female index cases (scenario 2). Numbers are given as median and interquartile range.

Partner (female)		Index (male)		Asymptomatic	
		Symptomatic		Low	High
		Low	High	Low	High
Uninfected		NA	NA	NA	NA
Symptomatic	Low	0% (0%–0%)	0% (0%–0%)	0% (0%–0%)	0% (0%–0%)
	High	0% (0%–1%)	0% (0%–1%)	0% (0%–0%)	0% (0%–1%)
Asymptomatic	Low	22% (19%–27%)	3% (1%–6%)	7% (6%–9%)	8% (3%–14%)
	High	66% (62%–70%)	73% (68%–78%)	10% (5%–17%)	35% (28%–41%)
Chlamydia positivity in partner		90% (88%–92%)	78% (73%–82%)	18% (12%–25%)	45% (39%–51%)
Proportion of notified partners		24% (11%–36%)	53% (37%–68%)	4% (1%–11%)	9% (3%–21%)
Proportion positive among notified		31% (16%–43%)	54% (41%–70%)	1% (0%–3%)	5% (2%–14%)

Table S4. Who-Notifies-Whom (WNW) matrix for male index cases (scenario 2). Numbers are given as median and interquartile range.

448 **S1.1.4 Effect of accelerated partner therapy (APT)**

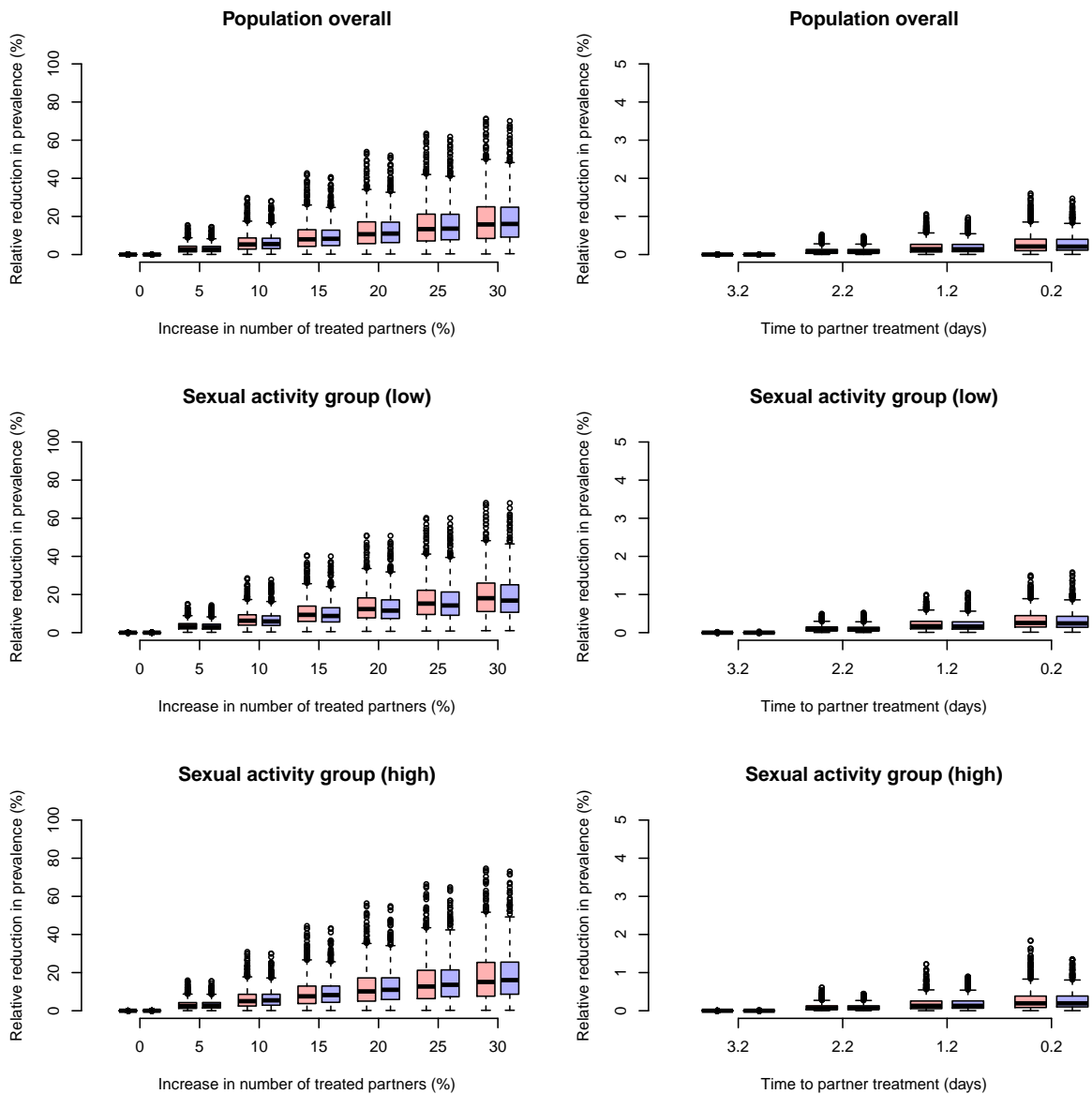


Figure S5. Projected effect of accelerated partner therapy (APT) on chlamydia prevalence after 5 years (scenario 2). APT is modelled as an increase in the number of treated partners (left panels) or a reduction in the time to partner treatment (right panels). Changes in prevalence are given for females (red) and males (blue). Note the difference in scales of the axes between the left and right panels.

449

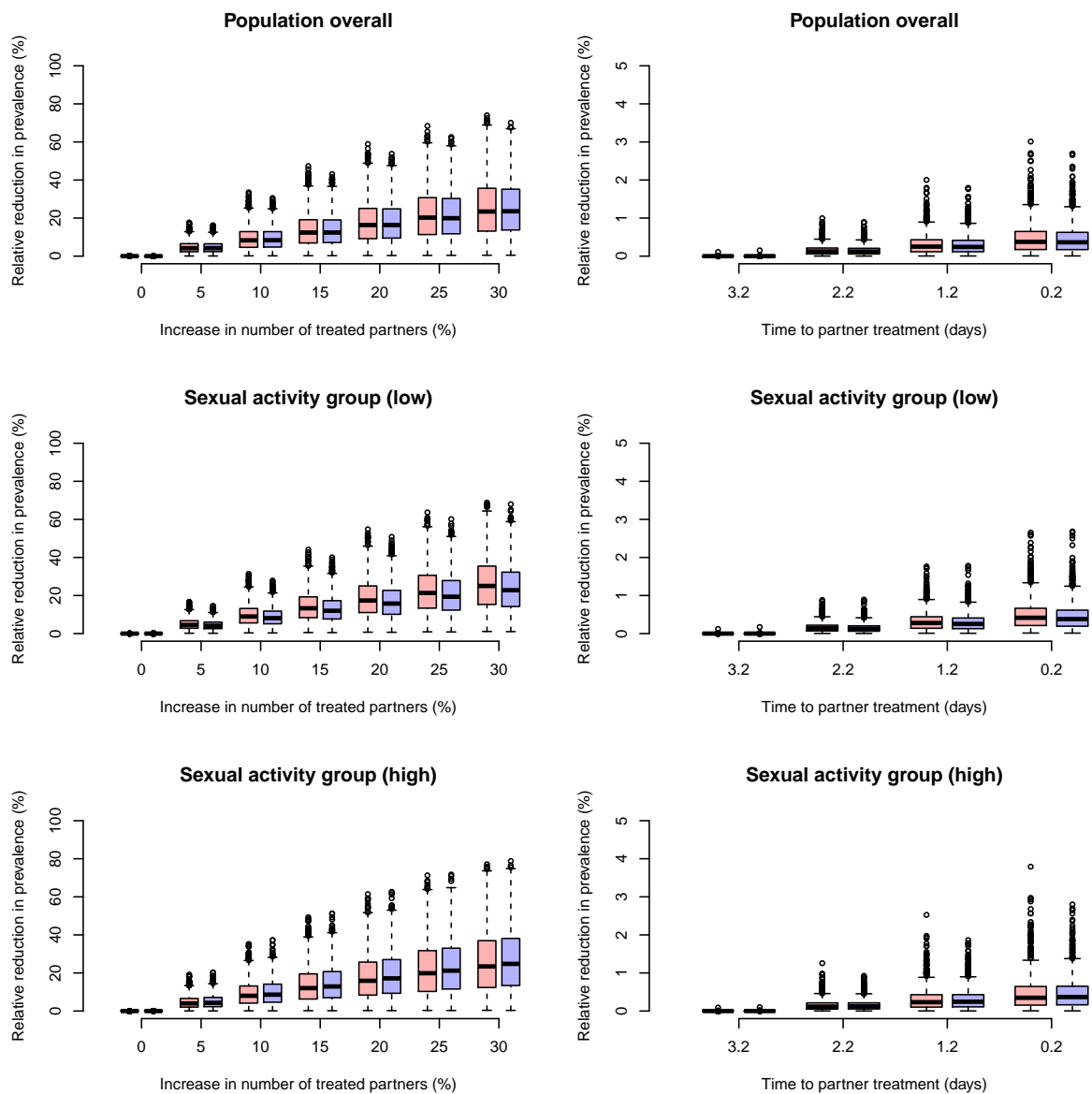


Figure S6. Projected effect of accelerated partner therapy (APT) on chlamydia prevalence after 5 years (scenario 3). APT is modelled as an increase in the number of treated partners (left panels) or a reduction in the time to partner treatment (right panels). Changes in prevalence are given for females (red) and males (blue). Note the difference in scales of the axes between the left and right panels.