

1 **Polygenic regulation of PTSD severity and outcomes among World Trade Center**
2 **responders**

3 Laura M. Huckins¹⁻⁶, Jessica S. Johnson¹, Leo Cancelmo², Olivia Diab², Jamie Schaffer², Leah
4 Cahn², Cindy Aaronson², Sarah R Horn², Clyde Schechter⁷, Shelby Marchese¹, Linda M
5 Bierer^{2,8}, Iouri Makotkine^{2,8}, Frank Desarnaud^{2,8}, Janine D Flory^{2,8}, Michael Crane⁹, Jacqueline
6 M. Moline¹⁰, Iris G. Udasin¹¹, Denise J. Harrison¹², Panos Roussos^{1-4,6}, Dennis S. Charney^{2,13,14},
7 Guia Guffanti^{15,16}, Karestan C Koenen¹⁷⁻¹⁹, Rachel Yehuda^{2,8}, Steven M. Southwick^{20,21}, Robert
8 H. Pietrzak^{20,21}, Adriana Feder²

9
10 ¹ Pamela Sklar Division of Psychiatric Genomics, Icahn School of Medicine at Mount Sinai,
11 New York, NY 10029, USA

12 ² Department of Psychiatry, Icahn School of Medicine at Mount Sinai, New York, NY 10029,
13 USA

14 ³ Department of Genetics and Genomic Sciences, Icahn School of Medicine at Mount Sinai, New
15 York, NY 10029, USA

16 ⁴ Icahn Institute for Genomics and Multiscale Biology, Icahn School of Medicine at Mount Sinai,
17 New York, NY 10029, USA

18 ⁵ Seaver Autism Center for Research and Treatment, Icahn School of Medicine at Mount Sinai,
19 New York, NY 10029, USA

20 ⁶ Mental Illness Research, Education and Clinical Centers, James J. Peters Department of
21 Veterans Affairs Medical Center, Bronx, NY 14068, USA

22 ⁷ Department of Family and Social Medicine, Albert Einstein College of Medicine of Yeshiva
23 University, Bronx, NY, USA

24 ⁸ Department of Psychiatry, James J. Peters Veterans Affairs Medical Center, Bronx, New York,

25 USA

26 ⁹ Department of Environmental Medicine and Public Health, Icahn School of Medicine at Mount

27 Sinai, New York, NY, USA

28 ¹⁰ Department of Occupational Medicine, Epidemiology and Prevention, Zucker School of

29 Medicine at Hofstra/Northwell, Great Neck, NY, USA

30 ¹¹ Environmental and Occupational Health Sciences Institute, School of Public Health, Rutgers

31 University, Piscataway, NJ, USA

32 ¹² Department of Medicine, Division of Pulmonary Critical Care and Sleep Medicine, NYU

33 School of Medicine, New York, NY, USA

34 ¹³ Department of Neuroscience, Icahn School of Medicine at Mount Sinai, New York, New

35 York, USA.

36 ¹⁴ Department of Pharmacological Sciences, Icahn School of Medicine at Mount Sinai, New

37 York, New York, USA.

38 ¹⁵ Harvard Medical School, Department of Psychiatry, Boston, MA, USA.

39 ¹⁶ McLean Hospital, Belmont, MA, USA.

40 ¹⁷ Massachusetts General Hospital, Psychiatric and Neurodevelopmental Genetics Unit (PNGU),

41 Boston, MA, USA.

42 ¹⁸ Broad Institute of MIT and Harvard, Stanley Center for Psychiatric Research, Cambridge, MA,

43 USA.

44 ¹⁹ Harvard School of Public Health, Department of Epidemiology, Boston, MA, USA.

45 ²⁰ Department of Psychiatry, Yale University School of Medicine, New Haven, CT, USA

46 ²¹ Department of Veterans Affairs National Center for Posttraumatic Stress Disorder, VA
47 Connecticut Healthcare System, West Haven, CT, USA

48 **Abstract**

49 Post-traumatic stress disorder (PTSD) is a debilitating psychiatric condition triggered by
50 exposure to trauma. The study of PTSD is complicated by highly heterogeneous presentations
51 and experiences of trauma between individuals. Capitalizing on the existence of the World Trade
52 Center General Responder Cohort (WTC-GRC) of rescue, recovery and clean-up workers who
53 responded during and in the aftermath of the World Trade Center (WTC) 9/11/2001 attacks, we
54 studied genetic correlates of PTSD in a sample of 371 WTC responders, selected from the WTC-
55 GRC utilizing stratified random sampling. This deeply phenotyped sample of WTC responders –
56 ranging from no/low PTSD symptom levels to severe PTSD– provide a unique opportunity to
57 study genetic risk factors for PTSD severity and chronicity following a single, shared, well-
58 documented trauma, also incorporating measures of childhood and other lifetime traumas.

59
60 We examined associations of polygenic risk scores (PRS) –derived from a range of genome-wide
61 association studies (GWAS) of behavioral traits, psychiatric disorders, and brain volumetric
62 phenotypes– with PTSD severity and chronicity among these 371 individuals. Our results
63 demonstrate significant genetic regulation of lifetime PTSD severity, assessed with the lifetime
64 version Clinician-Administered PTSD Scale (CAPS), and chronicity, assessed with the past-
65 month CAPS. PRS derived from GWAS of attention deficit-hyperactivity disorder (ADHD),
66 autism spectrum disorder (ASD), and brain imaging phenotypes (amygdala and putamen
67 volumes) were associated with several PTSD symptom dimensions. Interestingly, we found
68 greater genetic contribution to PTSD among cases compared to our full sample. In addition, we

69 tested for associations between exposures to traumatic stressors, including WTC-related
70 exposures, childhood trauma, and other lifetime traumatic life events in our full sample.
71 Together, polygenic risk and exposures to traumatic stress explained ~45% of variance in
72 lifetime CAPS ($R^2=0.454$), and ~48% of variance in past-month CAPS ($R^2=0.480$) in the full
73 sample.

74
75 These participants represent a highly vulnerable population, with exposures to severe trauma
76 during 9/11 and the following days and months. These novel identified associations between
77 PTSD and PRS of behavioral traits and brain volume phenotypes, as well as replicated
78 associations with PRS of other psychiatric disorders, may contribute to understanding the
79 biological factors associated with risk for and chronicity of PTSD. In particular, the
80 identification of neuroimaging phenotypes indicates that coupling of neuroimaging with genetic
81 risk score calculations may predict PTSD outcomes.

82
83

84 **Introduction**

85 Understanding the biological factors contributing to vulnerability to PTSD will be key in
86 developing effective treatments for the disorder, and in identifying individuals who may be at
87 high risk of development and persistence of PTSD. In line with this goal, twin studies have
88 established substantial genetic aetiology of PTSD, with heritability estimates around 30%¹⁻⁵,
89 although these vary substantially according to sex and trauma type^{1,3,5-7}. Significant progress in
90 elucidating the genetic aetiology of PTSD has been made through the advent of large-scale
91 genome-wide association studies (GWAS). Collaborative efforts from the PTSD working group
92 of the Psychiatric Genomics Consortium (PGC) established single nucleotide polymorphism
93 (SNP)-heritability at 5-20%, again with heritability estimates varying by sex². Progress in
94 identifying significant GWAS loci and other biomarkers is likely hampered by heterogeneity
95 within our studies. Deeper insights into PTSD biology may be gained by leveraging small but
96 deeply phenotyped cohorts. In particular, identifying single, quantifiable traumatic events is rare.
97

98 The worker response to the World Trade Center (WTC) disaster was unprecedented in scope,
99 involving tens of thousands of traditional and non-traditional responders in rescue, recovery and
100 clean-up efforts. PTSD arising after equally unprecedented traumatic exposures remains highly
101 prevalent (10-22%) and persistent in this population in the second decade following 9/11⁸⁻¹⁰.
102 Here, we characterized a unique sample of 371 WTC responders of diverse backgrounds and
103 training, all exposed to the aftermath of the 9/11 terrorist attacks, recruited on average 13.5 years
104 after 9/11/2001 and ranging in PTSD symptom severity from no/low symptoms to severe PTSD.
105 The present study aimed to fill a major gap in our understanding of the development and
106 chronicity of this disabling condition by conducting genome-wide genetic and gene expression

107 profiling¹¹ in a representative sample of WTC responders, characterized in depth with in-person
108 psychiatric, medical, and psychosocial assessments. The existence of this cohort represents a
109 unique opportunity to study genetic risk factors for PTSD following a shared and well-
110 documented trauma in a sample of individuals who nonetheless vary greatly in severity of
111 exposures to WTC-related trauma and other lifetime traumas.

112
113 Although few genome-wide associations have been identified for PTSD to date, genetic
114 aetiology and polygenicity of the disorder is well established; that is, small, additive effects
115 across the genome combine to increase risk for PTSD development after trauma exposure. Here,
116 we tested whether a range of polygenic risk scores (PRS) derived from GWAS of psychiatric
117 disorders and behavioral traits, and from available GWAS of magnetic resonance imaging (MRI)
118 phenotypes relevant to PTSD, predict PTSD diagnosis, severity and chronicity within our
119 sample. First, we tested whether polygenic risk predicts WTC-related PTSD severity, using the
120 total score on the Clinician Administered PTSD Scale (CAPS), lifetime version, as a proxy for
121 highest severity of WTC-related PTSD symptoms since 9/11/2001, among the full sample, and
122 among cases only. Next, we tested whether the total past-month CAPS score is also genetically
123 regulated among our cohort. Given the substantial time elapsed (on average 13.5 years) since the
124 WTC-related trauma exposures, this score served as a measure of chronicity of WTC-related
125 PTSD symptoms. The depth of phenotyping and characterization of this cohort also enabled us
126 to test the contribution of lifetime trauma exposures and other stressful life events to WTC-
127 related PTSD severity and chronicity (including exposures during childhood, 9/11 and its
128 aftermath, subsequent stressful life events, and other lifetime traumas), both individually and in
129 concert. Finally, we tested whether polygenic risk and potentially traumatic exposures interact to

130 increase PTSD risk and severity. Examining this interplay between genetic and exposure
131 variables, and understanding their individual and synergistic contributions to PTSD development
132 and chronicity will be vital to elucidating biological mechanisms underlying the disorder.
133

134 **Methods**

135

136 **Participants**

137 The WTC Health Program (WTC-HP) is a regional consortium of five clinical centers
138 established in the greater New York City area by the Centers of Disease Control and Prevention
139 in 2002, with the goal of providing health monitoring and treatment to WTC responders,
140 comprising the WTC-HP General Responder Cohort¹². In earlier studies in this cohort, we
141 characterized the severity, chronicity, and psychosocial predictors and correlates of PTSD
142 symptoms using data from self-report questionnaires^{9,13,14}. For the present study, we recruited
143 participants from the WTC-HP Responder Cohort who had completed at least three periodic
144 health monitoring visits at one of the four WTC-HP clinical centers participating in this study –
145 Mount Sinai Medical Center, New York University, Northwell Health, and Rutgers/The State
146 University of New Jersey – and who had provided signed consent to be contacted for research
147 studies. Stratified random sampling was employed to ensure selection of WTC responders
148 spanning the full range of WTC-related PTSD symptom severity, from no/minimal symptoms to
149 severe/chronic PTSD symptom levels on the PTSD Checklist – Specific Version (PCL-S)¹⁵
150 completed during periodic health monitoring visits to the WTC-HP. We additionally enriched
151 our sample with WTC responders from the two “extreme groups”, by oversampling individuals
152 with persistently high PTSD symptom levels and those with no/minimal PTSD symptoms, based
153 on PCL-S scores from their first three WTC-HP periodic health monitoring visits. Individuals
154 with a lifetime history of chronic psychotic disorder or bipolar disorder type I, substance
155 abuse/dependence or alcohol dependence over the prior three months, current pregnancy, acute
156 medical illness or exacerbation of chronic medical illness, history of significant head injury or

157 cerebrovascular accident, changes in medications or medication dosages over the prior month, or
158 who were taking oral or regularly injected steroid medications were excluded from the study.

159

160 The study, conducted between April 2013 and September 2017, was approved by the
161 Institutional Review Board of the Icahn School of Medicine at Mount Sinai, and all participants
162 provided written informed consent. A total of 471 WTC responders completed in-person clinical
163 assessments, yielding a final sample of 371 participants who met study eligibility criteria and
164 completed study procedures. Mean age (SD) was 54.2 (8.4) years, and 82.5% were male. The
165 sample was composed of 41.2% police responders and 58.8% non-traditional responders (e.g.,
166 construction workers).

167

168 **Assessments**

169 Data on 10 WTC-related exposures (e.g., exposed to human remains, received treatment for an
170 illness/injury during WTC recovery work) was obtained from interviews and self-report
171 questionnaires completed by participants during their first health-monitoring visit to the WTC-
172 HP, an average of 4.3 (SD=2.7) years following 9/11/2001, yielding the WTC Exposure Index
173 (total count of exposures, range 0-10). In-person clinical assessments were conducted an average
174 of 13.5 (SD=1.3) years following 9/11/2011. Trained Masters- or PhD-level clinical interviewers
175 administered the Structured Clinical Interview for DSM-IV¹⁶ (SCID) to assess current and
176 lifetime Axis-I psychiatric diagnoses, and the Clinician-Administered PTSD Scale¹⁷ (CAPS),
177 lifetime and past-month versions, to assess lifetime and past-month WTC-related PTSD
178 symptom severity and WTC-related PTSD diagnostic status. Lifetime and past-month PTSD

179 diagnosis was defined as meeting DSM-IV criteria for WTC-related PTSD and a total score ≥ 40
180 on the lifetime and past-month CAPS, respectively.

181
182 On the same day as the clinical assessment, participants also completed the Childhood Trauma
183 Questionnaire¹⁸ (CTQ), assessing physical, sexual, and emotional abuse, and physical and
184 emotional neglect experienced in childhood; the Traumatic Life Events Questionnaire¹⁹ (TLEQ),
185 assessing lifetime exposure to a range of traumatic events (e.g. crime, natural disaster, assault); a
186 checklist asking which of 15 stressful life events they had experienced since 9/11/2011 (e.g.,
187 “lost a job/laid off/lost income”, “divorced from spouse”, “had debt trouble”), modified from the
188 Diagnostic Interview Schedule (DIS) Disaster Supplement²⁰; and a health questionnaire asking
189 which medical conditions they had ever been diagnosed with²¹, modified to add common WTC-
190 related conditions (asthma or chronic respiratory condition, chronic rhinitis or sinusitis, sleep
191 apnea, or acid reflux). Participants additionally completed a history and physical examination
192 conducted by a licensed nurse practitioner, as well as routine laboratory testing, to rule out acute
193 medical illness or exacerbation of chronic medical illness.

194

195 **Blood Sample Collection and Genotyping**

196 Participants underwent collection of fasting blood samples approximately between 8:00 and 9:00
197 am. Genomic DNA was purified from an aliquot of 200 microliters of whole blood collected in
198 PAXgene blood DNA tubes (Qiagen, Germantown, MD, USA) using a QuickGene DNA whole
199 blood Kit S (Kurabo, Osaka, Japan) followed by an automated DNA extraction using a
200 QuickGene-810 instrument according to the manufacturer instructions (Kurabo, Osaka, Japan).

201 Genomic DNA quality and concentration were estimated using a NanoDrop 200c
202 spectrophotometer according to the manufacturer instructions (Thermo Fisher Scientific,
203 Waltham, MA, USA). Samples with an optical density ratio 260/280 superior or equal to 1.8
204 passed the quality control.

205

206 **Genotyping Quality Control**

207 Samples were genotyped in two batches (195 in the first, and 186 in the second). The following
208 QC steps were applied separately to each batch. Standard genotyping quality control metrics
209 were applied using plink^{22,23} to remove: multi-allelic variants, indels, ambiguous SNPs (c/g or
210 a/t); variants failing Hardy-Weinberg Equilibrium expectations ($HWE < 1e-06$); variants with
211 $MAF < 0.1\%$; individuals with high missingness (> 0.05) or genotypes with low call-rate (> 0.05)

212

213 Following both individual- and variant-level QC, genotypes were imputed using the Michigan
214 Imputation server²⁴. Genotypes were imputed using the 1000 Genomes Phase 3 (Version 5)
215 reference panel^{25,26}, and standard imputation QC performed according to Michigan Imputation
216 server guidelines²⁴. Following imputation, a final variant-level QC was performed to remove
217 variants with low imputation quality scores ($R < 0.2$), and to repeat previous HWE, MAF, call-
218 rate and missingness filters.

219

220 Following genotype-level QC, we merged the two batches, retained overlapping variants only,
221 and repeated our MAF, HWE, call-rate and genotyping filters described previously on the full,
222 merged cohort. In total, we retained 381 individuals and 10,858,359 variants. We computed
223 relatedness and genotype-derived ancestry using plink^{22,23}. We identified one pair of samples

224 with high relatedness ($\rho=0.55$), and removed one of the pair at random. In total, 371
225 individuals remained following our genotype and sample level QC steps.

226

227 **Genetic Regulation of PTSD**

228 Polygenic risk scores (PRS) for psychiatric diagnoses, personality traits, and MRI brain volume-
229 related phenotypes were calculated using 28 publicly available GWAS summary statistics (**Table**
230 **1**). Briefly, PRS are calculated for each individual within a cohort as a weighted sum of risk
231 alleles for a given trait or disorder. For example, a schizophrenia-PRS is calculated as a sum of
232 schizophrenia risk alleles in each individual's genome, weighted by the effect size of each
233 variant on schizophrenia risk. For each trait, we tested for association with (1) total lifetime
234 (highest) CAPS score and (2) total past-month CAPS score using PRSice^{27,28}, including all
235 significant genotype-derived principal components to control for confounding due to ancestry.
236 The amount of phenotypic variance explained by the GWAS-derived PRS alone was estimated
237 using a nested approach (equation 1).

238

239 *Equation 1: Estimating variance explained by polygenic risk*

$$240 \quad R_{Full}^2: Phenotype \sim PRS + PC_1 + \dots + PC_{20}$$

$$241 \quad R_{Baseline}^2: Phenotype \sim PC_1 + \dots + PC_{20}$$

$$242 \quad R_{PRS}^2 = R_{Full}^2 - R_{Baseline}^2$$

243

244 Given that a large number of individuals within our cohort have low CAPS scores, our
245 associations may be driven by this 'control' part of our distribution. Therefore, we repeated our
246 analysis, restricting only to 'cases': i.e., individuals meeting the CAPS and PTSD diagnosis
247 requirements described in our methods section.

248

249 For all significant PRS, we tested for interaction effects between polygenic risk and sex in our
250 full cohort. Given the high degree of shared genetic heritability between psychiatric diagnoses,
251 traits, and brain-volume related phenotypes, modelling these PRS separately likely introduces
252 redundancy, and may over-estimate the amount of phenotypic variance explained by PRS
253 Therefore, we next constructed a joint model, including all PRS reaching $p < 0.1$ in our individual
254 models. We calculated PRS for each trait at ten standard p-value thresholds (0.0001, 0.001, 0.01,
255 0.05, 0.1, 0.2, 0.3, 0.4, 0.5, 1), and fit a joint model at each threshold. We adjusted for genotype-
256 derived principal components using a nested approach as previously.

257

258 **Accounting for Trauma Exposure**

259 The samples included in this study have deep phenotyping information, including details of
260 experiences of exposures during 9/11 and its aftermath, as well as stressful life events since 9/11
261 and other lifetime traumas. These exposure variables may provide vital insights into modifying
262 effects of environment on genetic predisposition.

263

264 First, we tested whether WTC-related and other lifetime trauma exposures, as well as stressful
265 life events since 9/11/2001, significantly predicted WTC-related PTSD outcome. Specifically,
266 we tested for association of WTC Exposure Index, total CTQ and TLEQ scores, and total count
267 of stressful life events since 9/11/2001 with (i) total lifetime CAPS and (ii) total past-month
268 CAPS scores. We tested for each WTC Exposure Index item individually, as well as for total
269 WTC Exposure Index, total CTQ, and total TLEQ score, including sex, age, and the first 20
270 genotype-derived principal components as covariates. In addition, we tested for significant

271 interaction effects between responder type (police vs. non-traditional responder) and with each of
272 the ten WTC Exposure Index items individually. We estimated total variance in CAPS scores
273 explained using a nested model (equation 2). Baseline factors (sex, age, principal components)
274 predicted ~6% of variance in CAPS scores among the full cohort ($R^2 = 0.06277$, 0.05215 in
275 lifetime and past-month CAPS scores, respectively).

276
277 *Equation 2: Estimating total variance explained by traumatic exposures*

278
279
$$R_{Full}^2: Phenotype \sim Trauma + PC_1 + \dots + PC_{20} + sex + age$$

280
$$R_{Baseline}^2: Phenotype \sim PC_1 + \dots + PC_{20} + sex + age$$

281
$$R_{Trauma}^2 = R_{Full}^2 - R_{Baseline}^2$$

282 Similar to our PRS model, we expect some overlap between these different exposures and
283 factors; therefore, we fit a joint model to identify factors most significantly predicting CAPS
284 scores. Finally, we fit a joint model including all individual exposures and PRS in order to
285 predict (i) lifetime (highest) and (ii) past-month CAPS.

286

287

288 **Results**

289 **Characterization of PTSD among 371 WTC responders**

290 All responders in the final study sample of 371 completed the CAPS lifetime and past-month
291 versions, CTQ, TLEQ, and the checklist about stressful life events experienced since 9/11/2011,
292 modified from the DIS Disaster Supplement. The WTC Exposure Index was computed from
293 participants' responses obtained at their first WTC-HP health monitoring visit. A total of 112
294 (29.9%) responders met diagnostic criteria for lifetime WTC-related PTSD (**Figure 2A**; 71 non-
295 traditional and 41 police responders). Forty-three (11.5%) met diagnostic criteria for past-month
296 PTSD (**Figure 2B**; 33 non-traditional and 10 police responders).

297

298 **Polygenic Risk Scores predict PTSD outcomes and severity among WTC responders**

299 We performed PRS analyses using 28 GWAS for psychiatric disorders, traits, and MRI-derived
300 brain measures, and tested ability to predict lifetime and past-month CAPS scores. Risk scores
301 derived from GWAS of putamen and amygdala volumes, attention deficit-hyperactivity disorder
302 (ADHD), anxiety, autism spectrum disorder (ASD), smoking behavior ("ever smoker"), self-
303 defined wellbeing, and bipolar disorder all significantly predicted lifetime CAPS scores
304 ($R^2 > 0.01$; $p < 0.047$; **Table 1**); the same traits (except self-defined wellbeing and smoking) also
305 predicted past-month CAPS score ($R^2 > 0.012$; $p < 0.030$; **Table 1**). In addition, PTSD-PRS
306 derived from the latest PGC-PTSD GWAS significantly predicted past-month CAPS score (R^2
307 $= 0.017$, $p = 0.012$), although PTSD-PRS did not significantly predict lifetime CAPS ($R^2 = 0.0094$,
308 $p = 0.06$).

309

310 Next, we repeated our analysis including only PTSD ‘cases’, i.e., individuals meeting DSM-IV
311 criteria for WTC-related PTSD and with a total CAPS score ≥ 40 . We repeated this analysis for
312 lifetime cases, and past-month cases, following these definitions. We identified significant
313 associations between lifetime (highest) CAPS score and PRS derived from GWAS of anxiety,
314 mean putamen and amygdala volume, smoking behavior, and schizophrenia ($R^2 > 0.042$;
315 $p < 0.045$), implying that these PRS predict PTSD severity (**Table 2**). In addition, PRS from
316 GWAS of schizophrenia, loneliness, mean putamen and amygdala volumes, smoking behaviour,
317 and ASD all predicted past-month CAPS score among cases ($R^2 > 0.044$; $p < 0.033$).

318
319 Finally, we compared the proportion of variance explained by PRS in the full cohort vs. cases
320 only, and found that substantially more variance was explained among cases (**Figure 3**),
321 implying that PTSD severity is more significantly genetically regulated than PTSD case/control
322 status.

323

324 **Polygenic Risk Scores jointly explain significant variance in total CAPS score**

325 We fit a joint PRS model, including all GWAS-derived PRS reaching $p < 0.1$ in the individual
326 analyses simultaneously. In the full cohort, the final model explained 6.7% of variance in total
327 lifetime (highest) CAPS score ($R^2 = 0.0670$; most significant PRS: mean amygdala volume,
328 ADHD, self-defined wellbeing; **Table 3**), and 6.5% of variance in total past-month CAPS score
329 ($R^2 = 0.0654$; most significant PRS: mean putamen volume, anxiety). Repeating this analysis
330 among cases only revealed a significant increase in proportion of variance explained (lifetime
331 CAPS score $R^2 = 0.21$, most significant PRS: anxiety, alcohol dependence; past-month CAPS

332 $R^2=0.157$, most significant PRS: mean putamen volume, ever smoker), implying that severity of
333 PTSD may be more significantly genetically regulated than PTSD case/control status.

334

335

336 **Characterization of PTSD and potentially traumatic exposures**

337 WTC-related exposure severity during 9/11 and its aftermath, operationalized with the WTC
338 Exposure Index, significantly predicted both total lifetime (highest) and past-month CAPS scores
339 ($p=9.82 \times 10^{-5}$, 1.25×10^{-4} respectively; **Table 4A**). In addition, three specific exposures within the
340 WTC Exposure Index significantly correlated with current PTSD symptom severity; “Knowing
341 someone who was injured on 9/11” ($p=0.0011$, $p=8.55 \times 10^{-4}$ for lifetime and past-month CAPS
342 scores, respectively), “Received treatment for an injury or illness during WTC recovery work”
343 ($p=8.81 \times 10^{-6}$, $p=6.74 \times 10^{-6}$), and “Slept on-site during September or October 2001” ($p=0.0037$,
344 $p=0.011$). In addition, knowing someone injured on 9/11 significantly predicted highest lifetime
345 CAPS score among cases alone ($p=0.033$). No specific WTC-related exposures predicted past-
346 month CAPS score among cases.

347

348 Next, we tested for interaction effects between WTC exposures and responder type (police vs.
349 non-traditional responder). We found a significant positive interaction between responder type
350 and “Knowing someone who was injured on 9/11” ($\beta=17.2$, $p=0.024$) on lifetime (highest)
351 CAPS score, indicating that this effect is stronger among non-traditional responders; i.e.,
352 knowing someone injured on 9/11 had a greater effect on CAPS among non-traditional
353 responders. Conversely, we found a significant negative correlation between responder type and
354 “Received treatment for an injury or illness during WTC recovery work” on past-month CAPS

355 score ($\beta=-13.0$, $p=0.0044$), indicating that this effect is stronger among police responders; i.e.,
356 receiving treatment for an injury or illness had a greater effect on CAPS among police
357 responders than among non-traditional responders.

358
359 Modelling all WTC exposures jointly explained ~25% of variance in total lifetime and past-
360 month CAPS scores ($R^2=0.25$, 0.24 ; $p=6.27 \times 10^{-13}$, 2.585×10^{-11} , respectively: **S. Table 1**) among
361 the full sample. However, modelling all WTC exposures did not significantly predict total
362 lifetime (highest) or past-month CAPS scores among cases.

363
364 Although the CAPS was administered specifically with regards to WTC exposures, we
365 hypothesize that prior and subsequent traumas and stressful life events may also affect WTC-
366 related PTSD outcomes; therefore, we tested for association with stressful life events since
367 9/11/2001, as well as childhood trauma severity and lifetime trauma exposures assessed with the
368 CTQ and TLEQ, respectively (**Table 4**). We expect that these various measures of trauma and
369 stressors will include some degree of redundancy, particularly among some of our most
370 significant variables (for example, among CTQ subscale scores). Therefore, we constructed joint
371 models to estimate the proportion of phenotypic variance in (i) lifetime and (ii) past-month
372 CAPS scores explained by all exposures jointly. We were able to significantly predict both
373 lifetime ($R^2=0.44$) and past-month ($R^2=0.44$) CAPS scores. Although the CAPS was employed
374 to assess WTC-related PTSD symptoms, the most significant exposures associated with both
375 lifetime and past-month CAPS scores were number of stressful life events since 9/11/2001, and
376 childhood physical and emotional neglect. Additional significant predictors of lifetime (highest)
377 CAPS score included responder type, alone and in interaction with WTC-related exposure

378 “Knowing someone who was injured on 9/11”, and total TLEQ score. Interestingly, significant
379 predictors of past-month CAPS score also included a number of specific WTC Exposures, as
380 well overall WTC exposure severity (WTC Exposure Index), and the interaction between
381 responder type and WTC exposure “Received treatment for an injury or illness during WTC
382 recovery work” (**Table 4A**).

383 **Interactions between Exposures and Polygenic Risk**

384 Finally, we tested for interactions between all significant PRS and exposures. We identified four
385 significant interactions, all predicting past-month CAPS score, between childhood physical
386 neglect and anxiety-PRS ($p=0.048$), childhood physical neglect and ADHD-PRS ($p=0.0085$),
387 stressful life events since 9/11/2001 and ever smoker-PRS ($p=0.036$), and childhood emotional
388 neglect and ever smoker-PRS ($p=0.011$).

389
390 Next, we constructed joint models for lifetime and past-month CAPS, both in our full cohort and
391 among cases only, including in each score all previously significant PRS, exposures and
392 interaction terms between responder type and WTC exposures, and between PRS and exposures
393 (for past-month CAPS only). Our models explained ~45% of variance in lifetime CAPS score
394 among the full cohort ($R^2=0.454$), and ~48% of variance in past-month CAPS score ($R^2=0.480$)
395 (**S. Table 2**).

396

397

398 **Discussion**

399 Our analysis examined genetic and environmental factors associated with WTC-related PTSD
400 severity and chronicity, assessed with the CAPS during in-person clinician-administered
401 interviews: first, with highest lifetime CAPS score, a measure of highest PTSD severity since
402 9/11; second, with past-month CAPS, a measure of PTSD chronicity. PRS derived from GWAS
403 of ADHD, ASD, anxiety and brain imaging phenotypes (amygdala and putamen volume), among
404 others, jointly explained ~7% of variance in CAPS scores within our cohort, in line with the
405 degree of phenotypic variance in psychiatric diagnoses observed in previous studies²⁹.

406
407 Our study identifies a number of novel insights into the genetic architecture of PTSD. First, to
408 our knowledge, this is the first evidence for shared genetic aetiology between PTSD and MRI-
409 derived amygdala and putamen volumes. Importantly, imaging studies have previously identified
410 consistent associations between smaller amygdala volumes and PTSD diagnosis^{30,31}, in line with
411 the direction of effect in our study; however, such studies necessarily occur after PTSD onset,
412 making causality and direction of effect difficult to infer. Demonstrating shared genetic aetiology
413 between these traits therefore provides novel and vital context to these existing analyses. Our
414 study is also the first evidence of shared genetic risk factors between PTSD, ADHD, ASD, and
415 self-defined wellbeing. Furthermore, despite substantial evidence for shared genetic aetiology
416 between PTSD and smoking established in twin studies, we believe this is the first study to
417 demonstrate significant shared polygenic risk between the two traits.

418
419 In addition to these polygenic associations, our study also provides novel insights into the
420 genetic architecture of PTSD through three key strengths of our study design. First, our analysis

421 focuses on a quantitative trait (CAPS), conferring substantially higher power than traditional
422 case/control designs³². Second, this design allows us to probe the role of polygenic risk in PTSD
423 severity, rather than only in predicting PTSD diagnosis. Third, we probe specifically the role of
424 polygenic risk and exposure to potentially traumatic events among cases only. In particular,
425 comparing both individual and joint-PRS approaches revealed that PRS explained significantly
426 more variance in CAPS among cases compared to the full cohort, implying that PTSD severity
427 may be more strongly genetically regulated than PTSD case-control status. In parallel, we
428 observed less significant relationships between traumatic exposures and PTSD severity among
429 cases than in the full population. Together, these findings point towards greater genetic
430 regulation of PTSD severity among cases than among the full population. This finding in
431 particular has significant implications for larger genetic analyses of PTSD, which traditionally
432 focus on case-control status, or on PTSD among the full population, rather than studying PTSD
433 severity among cases specifically.

434
435 We additionally found significant associations between a several WTC-related exposures and
436 both highest lifetime and past-month CAPS; these associations differed significantly according
437 to responder type. In particular, we found a more significant effect of “Knowing someone who
438 was injured on 9/11” among non-traditional responders, and a of “Treated for injury or illness
439 during the WTC recovery effort” among police responders. These findings might in part reflect
440 higher severity and persistent personal impact of WTC-related exposures involving injury or
441 illness^{33,34}, which might differ by responder type. Of note, prior research in the larger WTC
442 responder cohort found an association between WTC-related exposure severity and WTC-related
443 PTSD symptom severity specifically in police responders³⁵.

444

445 Importantly, despite the focus of our study specifically on WTC-related PTSD, as ascertained in
446 clinician interviews, the most significant factors predicting both highest lifetime and past-month
447 PTSD were “experiencing new life stressors since 9/11”, and childhood physical and emotional
448 neglect scores, rather than WTC-related exposures, the latter explaining substantially less
449 phenotypic variance in CAPS scores. These findings are in line with those of prior research on
450 the impact of both childhood neglect³⁶ and secondary stressors³⁴ on risk for PTSD, and have
451 significant implications for future studies of PTSD. We, along with others, have shown that the
452 genetic aetiology of PTSD differs significantly according to trauma type⁵ and gender^{37,38},
453 implying that stratifying by trauma type may improve study power and increase biological
454 insights available from existing studies. We further suggest that studies focusing on the role of
455 traumas in PTSD, or seeking to maximize power of genome-wide association studies, should
456 seek to characterize a range of exposures to traumas and stressful life events, rather than
457 assuming a single causal or index trauma.

458

459 Within our full cohort, significantly more variance in highest lifetime and past-month CAPS was
460 explained by reported traumas and stressors than by genetic factors. To some extent, this likely
461 reflects the relatively low power of many of the GWAS from which we derive our PRS, and
462 limitations in applying PRS to individuals not of solely European ancestry. Moreover, we note
463 that, to date, no large-scale GWAS of CAPS are available for inclusion in our PRS analysis, and
464 we therefore derived our PTSD-PRS from a large PTSD case/control GWAS³⁸. Although
465 ostensibly studying the same underlying phenotype (PTSD), this difference in definitions may
466 lead to reduced predictive power in our analysis. In line with this, we find that the PTSD-PRS

467 significantly predicts CAPS in our full sample, but not among cases only, perhaps suggesting
468 that the PTSD-PRS captures genetic predisposition to PTSD rather than PTSD severity.
469 Consequently, we may be significantly *under-estimating* the amount of variance explained by
470 genetic risk factors. Simultaneously, we may significantly *over-estimate* the amount of variance
471 explained by these traumas and exposures to traumatic stress. Most importantly, participant
472 recall of traumas and stressors is biased by current mood and PTSD symptomatology^{39,40},
473 implying that individuals within our study with current PTSD may rank their stressors higher
474 than those without, confounding our analysis. The effect may be especially pronounced among
475 scales and scoring systems that require rankings or subjective recall many years later (for
476 example, the CTQ or ‘stressful life events since 9/11’) than the data on WTC-related exposures
477 collected within a few years post-9/11/2001, perhaps also accounting for the difference in
478 variance explained by these factors⁴¹.

479
480 Finally, although our joint PRS-trauma exposure models explained roughly similar amounts of
481 variance in lifetime and past-month CAPS scores, we note strikingly different contributions in
482 each model. In particular, we note that more variance in lifetime highest CAPS score than in
483 past-month CAPS score is explained by genetic factors, which may reflect differential genetic
484 regulation of the two phenotypes (i.e., that PTSD severity is more strongly genetically regulated
485 than PTSD chronicity). In addition, we note substantial differences in the stressors and traumas
486 associated with each phenotype, with many WTC-related exposures significantly associated with
487 past-month CAPS only. Together, these findings imply different genetic architectures and
488 environmental stressors contributing to these two phenotypes.

489

490 In contrast to previous studies, which identified sex-specific genetic aetiology in PTSD, we did
491 not observe any significant interactions between sex and polygenic risk, although this is likely
492 attributable to the small number of women in our sample. To some extent, the proportion of
493 variance explained, and the lead GWAS-PRS associations identified in our analysis may be due
494 to the power of each individual GWAS, rather than due to true, shared biology. For many of the
495 GWAS from which we derive our polygenic-risk scores, we likely capture only a fraction of the
496 true SNP-based heritability in psychiatric disease in current studies³⁷, and we expect an effect
497 which may be more severe among studies of those phenotypes which are of particular interest to
498 us: for example, PTSD and MDD. Similarly, the significant associations that we observe in our
499 single-PRS analysis for schizophrenia and bipolar disorder may reflect the substantial power of
500 those GWAS studies, rather than necessarily indicating that these disorders have more shared
501 genetic aetiology with PTSD than, for example, MDD.

502
503 These participants represent a highly vulnerable population, with exposures to severe trauma
504 during 9/11 and its aftermath. Identifying individuals at heightened risk for PTSD, or increased
505 risk for severe or chronic PTSD, is of special importance and relevance in this group. Our study
506 leverages a powerful quantitative trait definition (CAPS), together with deep phenotyping to
507 yield novel insights into the genetic architecture of PTSD and PTSD severity. In particular, our
508 analysis identifies novel associations between PTSD and ADHD, ASD, self-defined wellbeing,
509 and smoking behaviours. Furthermore, we identify shared polygenic risk between PTSD and
510 MRI imaging phenotypes, indicating that coupling of neuroimaging with genetic risk score
511 calculations may predict PTSD outcomes and resilience.

512
513

515 **Acknowledgements**

516

517 We are grateful for the advice and guidance of Pamela Sklar, who contributed centrally to the
518 design of this study.

519

520

521

522

523

524 **References**

525

526 1. Daskalakis, N. P., Rijal, C. M., King, C., Huckins, L. M. & Ressler, K. J. Recent Genetics and

527 Epigenetics Approaches to PTSD. *Current Psychiatry Reports* **20**, 30 (2018).

528 2. Nievergelt, C. M. *et al.* Genomic Approaches to Posttraumatic Stress Disorder: The

529 Psychiatric Genomic Consortium Initiative. *Biological Psychiatry* **83**, 831–839 (2018).

530 3. Stein, M. B., Jang, K. L., Taylor, S., Vernon, P. A. & Livesley, W. J. Genetic and

531 environmental influences on trauma exposure and posttraumatic stress disorder symptoms: a

532 twin study. *Am J Psychiatry* **159**, 1675–1681 (2002).

533 4. True, W. R. *et al.* A twin study of genetic and environmental contributions to liability for

534 posttraumatic stress symptoms. *Arch Gen Psychiatry* **50**, 257–264 (1993).

535 5. Huckins, L. M. *et al.* Analysis of Genetically Regulated Gene Expression Identifies a

536 Prefrontal PTSD Gene, SNRNP35, Specific to Military Cohorts. *Cell Reports* **31**, 107716

537 (2020).

538 6. Sartor, C. E. *et al.* Common heritable contributions to low-risk trauma, high-risk trauma,

539 posttraumatic stress disorder, and major depression. *Arch Gen Psychiatry* **69**, 293–299 (2012).

540 7. Sartor, C. E. *et al.* Common genetic and environmental contributions to post-traumatic stress

541 disorder and alcohol dependence in young women. *Psychol Med* **41**, 1497–1505 (2011).

542 8. Bromet, E. J. *et al.* DSM-IV post-traumatic stress disorder among World Trade Center

543 responders 11-13 years after the disaster of 11 September 2001 (9/11). *Psychol Med* **46**, 771–

544 783 (2016).

545 9. Chen, C. *et al.* The Burden of Subthreshold Posttraumatic Stress Disorder in World Trade

546 Center Responders in the Second Decade After 9/11. *J Clin Psychiatry* **81**, (2020).

- 547 10. Jordan, H. T. *et al.* Persistent mental and physical health impact of exposure to the
548 September 11, 2001 World Trade Center terrorist attacks. *Environ Health* **18**, 12 (2019).
- 549 11. Marchese, S. *et al.* Altered gene expression and PTSD symptom dimensions in World
550 Trade Center responders. *medRxiv* 2021.03.05.21252989 (2021)
551 doi:10.1101/2021.03.05.21252989.
- 552 12. Dasaro, C. R. *et al.* Cohort Profile: World Trade Center Health Program General
553 Responder Cohort. *Int J Epidemiol* **46**, e9 (2017).
- 554 13. Pietrzak, R. H. *et al.* Trajectories of PTSD risk and resilience in World Trade Center
555 responders: an 8-year prospective cohort study. *Psychological Medicine* **44**, 205–219 (2014).
- 556 14. Feder, A. *et al.* Risk, coping and PTSD symptom trajectories in World Trade Center
557 responders. *J Psychiatr Res* **82**, 68–79 (2016).
- 558 15. Ruggiero, K. J., Del Ben, K., Scotti, J. R. & Rabalais, A. E. Psychometric properties of
559 the PTSD Checklist-Civilian Version. *J Trauma Stress* **16**, 495–502 (2003).
- 560 16. First, M. B., Spitzer, R. L., Gibbon Miriam & Williams, J. B. W. *Structured Clinical*
561 *Interview for DSM-IV-TR Axis I Disorders, Research Version, Non-patient Edition. (SCID-*
562 *I/NP). Biometrics Research* (New York State Psychiatric Institute, 2002).
- 563 17. Blake, D. D. *et al.* The development of a Clinician-Administered PTSD Scale. *J Trauma*
564 *Stress* **8**, 75–90 (1995).
- 565 18. Bernstein, D. P. *et al.* Development and validation of a brief screening version of the
566 Childhood Trauma Questionnaire. *Child Abuse Negl* **27**, 169–190 (2003).
- 567 19. Kubany, E. S. *et al.* Development and preliminary validation of a brief broad-spectrum
568 measure of trauma exposure: the Traumatic Life Events Questionnaire. *Psychol Assess* **12**,
569 210–224 (2000).

- 570 20. North, C. S., Pfefferbaum, B. & Robins, L. N. *The Diagnostic Interview*
571 *Schedule/Disaster Supplement (DIS-IV/DS)*. (St. Louis: Washington University, 2001).
- 572 21. Pietrzak, R. H., Goldstein, R. B., Southwick, S. M. & Grant, B. F. Medical Comorbidity
573 of Full and Partial Posttraumatic Stress Disorder in US Adults: Results From Wave 2 of the
574 National Epidemiologic Survey on Alcohol and Related Conditions. *Psychosomatic Medicine*
575 **73**, 697–707 (2011).
- 576 22. Chang, C. C. *et al.* Second-generation PLINK: rising to the challenge of larger and richer
577 datasets. *GigaScience* **4**, 7 (2015).
- 578 23. Purcell, S. *et al.* PLINK: a tool set for whole-genome association and population-based
579 linkage analyses. *American journal of human genetics* **81**, 559–75 (2007).
- 580 24. Das, S. *et al.* Next-generation genotype imputation service and methods. *Nat Genet* **48**,
581 1284–1287 (2016).
- 582 25. 1000 Genomes Project Consortium, {fname} *et al.* A map of human genome variation
583 from population-scale sequencing. *Nature* **467**, 1061–73 (2010).
- 584 26. Auton, A. *et al.* A global reference for human genetic variation. *Nature* **526**, 68–74
585 (2015).
- 586 27. Choi, S. W., Mak, T. S. H. & O'Reilly, P. A guide to performing Polygenic Risk Score
587 analyses. *bioRxiv* (2018) doi:10.1101/416545.
- 588 28. Euesden, J., Lewis, C. M. & O'Reilly, P. F. PRSice: Polygenic Risk Score software.
589 *Bioinformatics* **31**, 1466–1468 (2014).
- 590 29. Consortium, C.-D. G. of the P. G. Identification of risk loci with shared effects on five
591 major psychiatric disorders: a genome-wide analysis. *Lancet* **381**, 1371–1379 (2013).

- 592 30. Morey, R. A. *et al.* Amygdala volume changes in posttraumatic stress disorder in a large
593 case-controlled veterans group. *Arch Gen Psychiatry* **69**, 1169–1178 (2012).
- 594 31. Ousdal, O. T. *et al.* The association of PTSD symptom severity with amygdala nuclei
595 volumes in traumatized youths. *Translational Psychiatry* **10**, 1–10 (2020).
- 596 32. Yang, J., Wray, N. R. & Visscher, P. M. Comparing apples and oranges: equating the
597 power of case-control and quantitative trait association studies. *Genetic Epidemiology* **34**,
598 254–257 (2010).
- 599 33. Neria, Y., Nandi, A. & Galea, S. Post-traumatic stress disorder following disasters: a
600 systematic review. *Psychol Med* **38**, 467–480 (2008).
- 601 34. Lock, S. *et al.* Secondary stressors and extreme events and disasters: a systematic review
602 of primary research from 2010-2011. *PLoS Curr* **4**, (2012).
- 603 35. Zvolensky, M. J. *et al.* World Trade Center disaster and sensitization to subsequent life
604 stress: A longitudinal study of disaster responders. *Preventive Medicine* **75**, 70–74 (2015).
- 605 36. Widom, C. S. Posttraumatic stress disorder in abused and neglected children grown up.
606 *Am J Psychiatry* **156**, 1223–1229 (1999).
- 607 37. Duncan, L. E. *et al.* Largest GWAS of PTSD (N=20,070) yields genetic
608 overlap with schizophrenia and sex differences in heritability. *Molecular Psychiatry*,
609 *Published online: 25 April 2017; | doi:10.1038/mp.2017.77* (2017) doi:10.1038/mp.2017.77.
- 610 38. Nievergelt, C. M. *et al.* International meta-analysis of PTSD genome-wide association
611 studies identifies sex- and ancestry-specific genetic risk loci. *Nature Communications* **10**,
612 4558 (2019).
- 613 39. Durand, F., Isaac, C. & Januel, D. Emotional Memory in Post-traumatic Stress Disorder:
614 A Systematic PRISMA Review of Controlled Studies. *Front. Psychol.* **10**, (2019).

- 615 40. Yehuda, R. *et al.* Post-traumatic stress disorder. *Nature Reviews Disease Primers* **1**, 1–22
616 (2015).
- 617 41. Frissa, S. *et al.* Challenges in the retrospective assessment of trauma: comparing a
618 checklist approach to a single item trauma experience screening question. *BMC Psychiatry* **16**,
619 (2016).
- 620 42. Hibar, D. P. *et al.* Common genetic variants influence human subcortical brain structures.
621 *Nature* **520**, 224 (2015).
- 622 43. Martin, J. *et al.* Biological overlap of attention-deficit/hyperactivity disorder and autism
623 spectrum disorder: evidence from copy number variants. *Journal of the American Academy of*
624 *Child and Adolescent Psychiatry* **53**, 761—770.e26 (2014).
- 625 44. Tobacco and Genetics Consortium. Genome-wide meta-analyses identify multiple loci
626 associated with smoking behavior. *Nat Genet* **42**, 441–447 (2010).
- 627 45. Otowa, T. *et al.* Meta-analysis of genome-wide association studies of anxiety disorders.
628 *Mol Psychiatry* **21**, 1391–1399 (2016).
- 629 46. Turley, P. *et al.* Multi-trait analysis of genome-wide association summary statistics using
630 MTAG. *Nature Genetics* **50**, 229–237 (2018).
- 631 47. Genome-wide association study identifies 30 loci associated with bipolar disorder |
632 Nature Genetics. <https://www.nature.com/articles/s41588-019-0397-8>.
- 633 48. Grove, J. *et al.* Identification of common genetic risk variants for autism spectrum
634 disorder. *Nature Genetics* **51**, 431–444 (2019).
- 635 49. Pardiñas, A. F. *et al.* Common schizophrenia alleles are enriched in mutation-intolerant
636 genes and in regions under strong background selection. *Nature Genetics* (2018)
637 doi:10.1038/s41588-018-0059-2.

- 638 50. Walters, R. K. *et al.* Transancestral GWAS of alcohol dependence reveals common
639 genetic underpinnings with psychiatric disorders. *Nature Neuroscience* **21**, 1656–1669 (2018).
- 640 51. Gao, J. *et al.* Genome-Wide Association Study of Loneliness Demonstrates a Role for
641 Common Variation. *Neuropsychopharmacology* **42**, 811–821 (2017).
- 642 52. Howard, D. M. *et al.* Genome-wide meta-analysis of depression identifies 102
643 independent variants and highlights the importance of the prefrontal brain regions. *Nature*
644 *Neuroscience* **22**, 343–352 (2019).
- 645 53. Goldstein, J. I. *et al.* Clozapine-induced agranulocytosis is associated with rare HLA-
646 DQB1 and HLA-B alleles. *Nat Commun* **5**, 4757 (2014).
- 647

WTC Exposure Index
Arrived at the WTC site between 9/11-9/13
Was caught in the dust cloud
Worked at or adjacent to the collapse site during September 2001
Worked greater than the median number of hours at the WTC site
Exposed to human remains
Participated in search and rescue
Experienced death of a colleague, friend, or family member on 9/11
Knows someone who was injured on 9/11
Received treatment for an illness or injury during WTC recovery work
Slept at the site in September or October 2001

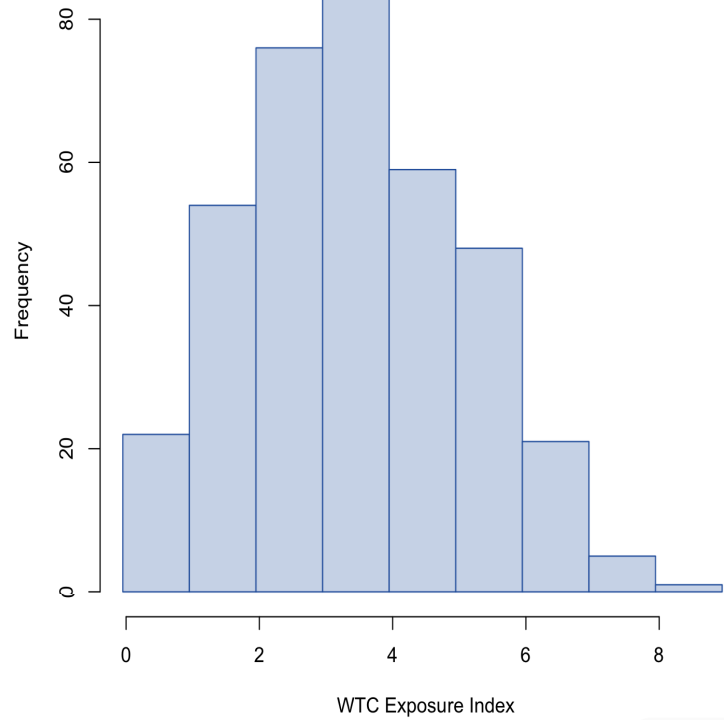


Figure 1: World Trade Centre Exposures were quantified using the World Trade Center Exposure Index. (A) WTC Exposure Index Factors. (B) Distribution of total WTC Exposure Scores.

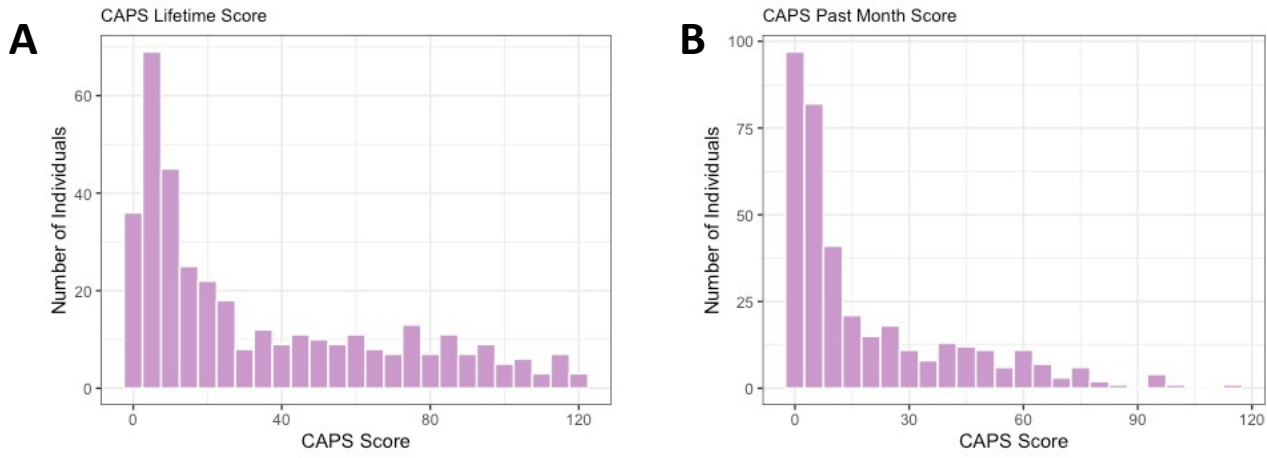


Figure 2: Characterization of PTSD among 371 WTC responders.
A) Highest recorded lifetime CAPS score; B) Past-month CAPS score

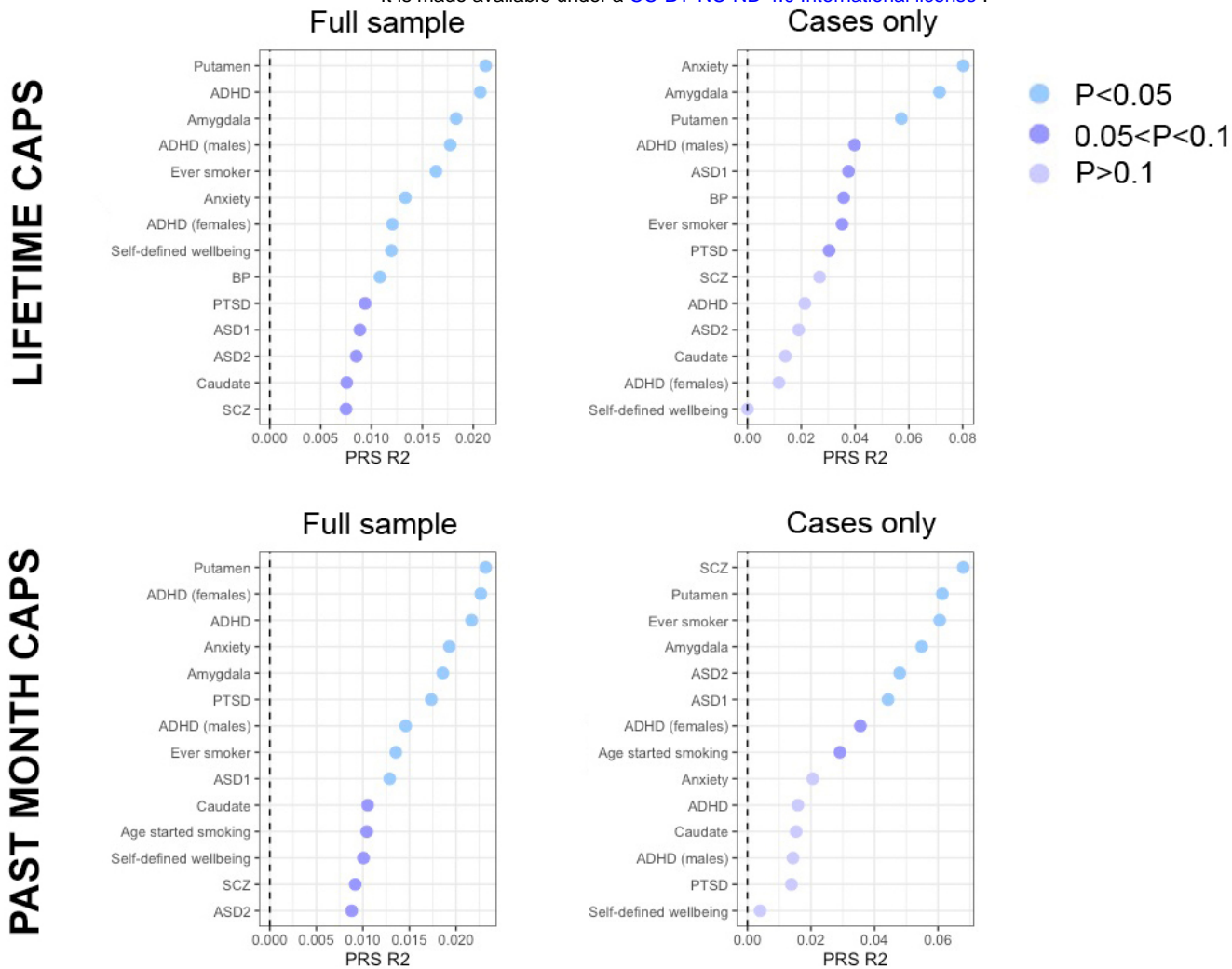


Figure 3: Phenotypic variance (R^2) in (A) Highest Lifetime and (B) Past Month CAPS explained by PRS. All traits with $p < 0.1$ are shown here for (Left) Full sample and (Right) among cases only.