

# Quantifying the impact of test-trace-isolate-quarantine (TTIQ) strategies on COVID-19 transmission

Peter Ashcroft<sup>1</sup>, Sonja Lehtinen<sup>1</sup>, and Sebastian Bonhoeffer<sup>1</sup>

<sup>1</sup>*Institute of Integrative Biology, ETH Zurich, Switzerland*

## Abstract

The test-trace-isolate-quarantine (TTIQ) strategy is used to break chains of transmission during a disease outbreak. Confirmed-positive pathogen carriers are isolated from the community to prevent onward transmission and their recent close contacts are identified and pre-emptively quarantined. TTIQ, along with mask wearing and social distancing, make up the non-pharmaceutical interventions that are utilised to suppress the ongoing SARS-CoV-2 pandemic. The efficacy of the TTIQ strategy depends on the probability of isolating a case, the fraction of contacts quarantined, and the delays in these processes. Here we use empirical distributions of the timing of SARS-CoV-2 transmission to quantify how these parameters individually contribute to the reduction of onwards infection. We show that finding and isolating index cases, and doing so with minimal delay after symptom onset, have the largest effects on case reduction, and that contact tracing can make up for deficiencies in testing coverage and delays. These results can be used to assess how TTIQ can be improved and optimised. We provide an online application to assess the efficacy as a function of these parameters.

## 1 Introduction

Individuals who are confirmed as infected with the severe acute respiratory syndrome coronavirus 2 (SARS-CoV-2) pathogen are isolated from the population to prevent further transmission. The individuals who have been in recent close contact with an infected individual have an increased risk of being infected themselves. By identifying the potentially-infected contacts through contact tracing, and eventually quarantining them, transmission chains can be broken. Thus contact tracing is an essential public health tool for controlling epidemics (WHO, 2020). The strategy of testing to identify infected cases, isolating them to prevent further transmission, and tracing & quarantining their recent close contacts is known as test-trace-isolate-quarantine (TTIQ) (Salathé et al., 2020). This strategy is a fundamental non-pharmaceutical intervention which is used globally to control the ongoing SARS-CoV-2 pandemic (Kucharski et al., 2020).

Testing typically occurs once an individual develops symptoms of coronavirus disease 2019 (COVID-19). As presymptomatic transmission makes up approximately 40% of total onward transmission (He et al., 2020; Ashcroft et al., 2020a;

**Current version:** 04 December, 2020;

**Corresponding authors:** [peter.ashcroft@env.ethz.ch](mailto:peter.ashcroft@env.ethz.ch), [seb@env.ethz.ch](mailto:seb@env.ethz.ch);

**NOTE:** This preprint reports new research that has not been certified by peer review and should not be used to guide clinical practice.  
Code is publicly available at <http://github.com/ashcrofpt>.

37 Ferretti et al., 2020a), it would be possible for the number of secondary cases to be  
38 more than halved if infected individuals are isolated from the community at the  
39 time of symptom onset. However, as testing follows from symptoms, the testing  
40 & isolating strategy without subsequent contact tracing & quarantine is unlikely to  
41 capture asymptomatic cases which make up 20% of cases (Buitrago-Garcia et al.,  
42 2020), and thus isolating 100% of cases would not be possible.

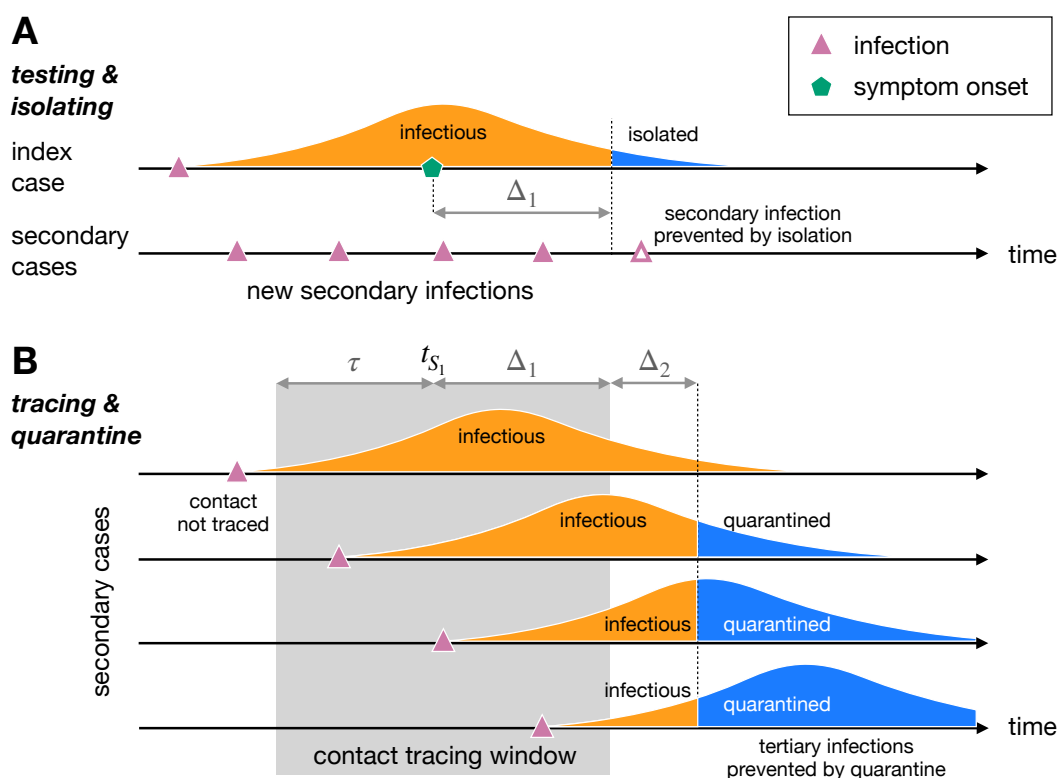
43 Contact tracing & quarantine have the potential to be effective interventions  
44 against the spread of COVID-19 because of the high frequency of pre-symptomatic  
45 or asymptomatic transmission from recently-infected individuals (Moghadas et al.,  
46 2020). Potentially-infected contacts can be identified and quarantined before they  
47 would be isolated as a result of developing symptoms and/or receiving a posi-  
48 tive test result, such that their onward transmission is reduced. This is exemplified  
49 in the light of the high dispersion of the offspring distribution and frequency of  
50 super-spreader events (Riou & Althaus, 2020; Endo et al., 2020; Adam et al., 2020),  
51 where large numbers of potentially-infected contacts can be quarantined to pre-  
52 vent widespread community transmission. Tracing & quarantine does not depend  
53 on symptom development. Hence, this strategy is capable of reducing onward  
54 transmission even from asymptotically infected individuals.

55 TTIQ strategies are not perfect: each stage in the process is subject to delays  
56 and uncertainties and it would be impossible to prevent all onward transmission  
57 through TTIQ alone (Ferretti et al., 2020b; Kucharski et al., 2020; Kretzschmar et al.,  
58 2020; Quilty et al., 2020; Ashcroft et al., 2020b). Furthermore, in the presence of  
59 widespread community transmission the contact tracers may be overwhelmed by  
60 the volume of cases. In this scenario it is important to optimise the resources (i.e. the  
61 person hours of the contact tracers) to minimise onward transmission.

62 In a previous study of TTIQ efficacy, Ferretti et al. (2020b) used an approach  
63 based on the empirically-observed timing of transmission events – but with sub-  
64 stantial approximations around the TTIQ process – to get to an analytically tractable  
65 prediction of the impact of TTIQ on SARS-CoV-2 transmission. They concluded  
66 that widespread digital contact tracing (with minimal delay between index case  
67 identification and quarantine of secondary cases) would be necessary to reduce the  
68 effective reproduction number,  $R_e$ , below one to bring an outbreak under control.  
69 Kucharski et al. (2020) used an agent-based model with detailed contact structures  
70 to simulate intervention strategies. While the TTIQ process is more accurately de-  
71 scribed than in Ferretti et al. (2020b), they did not use empirical data about the  
72 timing of transmission, which is crucial for quantifying the impact of isolation and  
73 quarantine. Kretzschmar et al. (2020) opted for a discrete-time branching process  
74 model of transmission and TTIQ. While they explicitly accounted for the timing of  
75 infection events and accurately described the TTIQ process, they predominantly fo-  
76 cussed on assessing the role of digital contact tracing based on mobile applications.

77 In this paper we develop an analytical approach which builds on our previous  
78 work in which we have quantified the impact of quarantine duration and high-

79 lighted the optimal use of test-and-release strategies (Ashcroft et al., 2020b). Briefly,  
 80 we use the empirically-observed distributions of transmission timing [Fig. 2; Fer-  
 81 retti et al. (2020a)] to determine when infections occur (Fig. 1). We then introduce  
 82 five parameters to describe the TTIQ process: i)  $f$ , the probability that an index case  
 83 is isolated from the population and is interviewed by contact tracers; ii)  $\Delta_1$ , the time  
 84 delay between symptom onset and isolation of the index case; iii)  $\tau$ , the duration  
 85 prior to symptom onset in which contacts are identifiable; iv)  $g$ , the fraction of identi-  
 86 fiable contacts that are quarantined; and v)  $\Delta_2$ , the delay between isolation of the  
 87 index case and the start of quarantine for the contacts. We compute the expected  
 88 number of tertiary cases per index case under the TTIQ interventions, with the aim  
 89 being to reduce this number below one to suppress the growth of the epidemic (see  
 90 Methods for details). We systematically explore this parameter space, first for the  
 91 “testing & isolation” intervention in the absence of contact tracing (Fig. 1A), and  
 92 then with additional “tracing & quarantine” (Fig. 1B).



**Fig. 1** A) Under testing & isolation, index cases are identified and isolated from the population after a delay  $\Delta_1$  after they develop symptoms (at time  $t_{S_1}$ ). This curtails their duration of infectiousness and reduces the number of secondary cases. B) Under tracing & quarantine, the contacts of an index case are identified and quarantined after an additional delay  $\Delta_2$ . This reduces the onward transmission from the secondary cases. Only contacts that occur during a contact tracing window can be identified. This window extends from  $t_{S_1} - \tau$  (i.e.  $\tau$  days before the index case developed symptoms) to  $t_{S_1} + \Delta_1$  (i.e. when the index case was isolated). Shown distributions are schematic representations of those shown in Fig. 2.

## 93 2 Methods

94 Our primary goal is to quantify the reduction of transmission by isolating indi-  
95 viduals who test positive for SARS-CoV-2 and by quarantining their recent close  
96 contacts with an increased risk of infection. We refer to the initial confirmed case  
97 as the index case, and the infected contacts as secondary cases. We know that the  
98 index case developed symptoms at time  $t_{S_1}$ , but the time at which they were in-  
99 fected,  $t_1$ , is generally unknown. Secondary cases will be infected by the index case  
100 at some time  $t_2$  ( $t_2 > t_1$ ), and develop symptoms at time  $t_{S_2}$  (Fig. 2A).

### 101 2.1 Generation times, infectivity profiles, and incubation periods

102 The relationships between the times  $t_1, t_{S_1}, t_2, t_{S_2}$  are determined by: the generation  
103 time distribution,  $q(t_2 - t_1 | \theta_q)$ , describing the time interval between the infection  
104 of an index case and secondary case (Fig. 2B); the infectivity profile,  $p(t_2 - t_{S_1} | \theta_p)$ ,  
105 describing the time interval between the onset of symptoms in the index case and  
106 infection of the secondary case (Fig. 2C); and the incubation period distribution,  
107  $g(t_{S_1} - t_1)$ , describing the time between the infection of an individual and the on-  
108 set of their symptoms (Fig. 2D). For these distributions, we use empirical esti-  
109 mates from Ferretti et al. (2020a) which are based on a large set of transmission  
110 pairs and minimal assumptions about the relationship between infectiousness and  
111 symptoms, which would otherwise bias the resulting generation time distribution  
112 (Lehtinen et al., 2020).

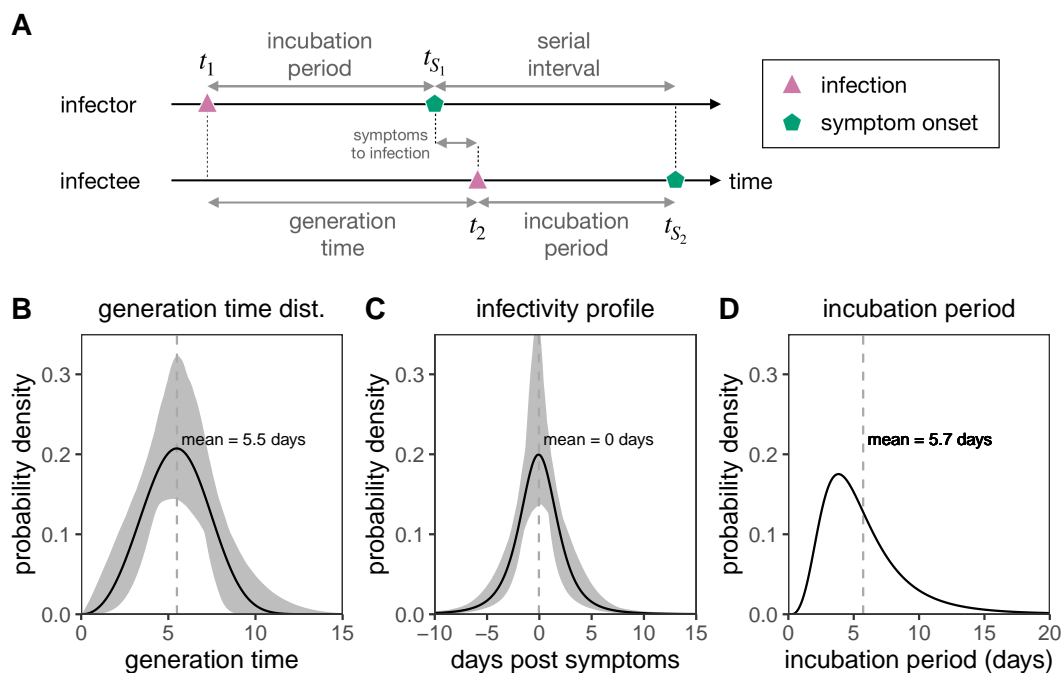
### 113 2.2 Quantifying the number of secondary cases

114 Consider an index case who develops symptoms of COVID-19 at time  $t_{S_1}$ . The  
115 time of infection,  $t_1 < t_{S_1}$ , is generally unknown. Without any TTIQ intervention  
116 this individual would contact and infect  $k_1$  individuals during the course of the  
117 infection, where this number of contacts is distributed as  $p_{k_1}$  across individuals in  
118 the population. Note that this number of contacts depends on the current level of  
119 other non-pharmaceutical interventions, such as mask wearing and social distanc-  
120 ing. The number of secondary infections up to a time  $T$  after developing symptoms  
121 would then be

$$k_1 \int_{-\infty}^T dt_2 p(t_2 - t_{S_1} | \theta_p) = k_1 P(T - t_{S_1} | \theta_p), \quad (1)$$

122 where  $p(t | \theta_p)$  is the infectivity profile and  $P(t | \theta_p) = \int_{-\infty}^t dt' p(t' | \theta_p)$  is the cumula-  
123 tive infectivity profile.

124 Index cases who develop symptoms and/or test positive for SARS-CoV-2 should  
125 be isolated from the population. This occurs in a fraction  $f$  of index cases who are  
126 isolated at a time  $T = t_{S_1} + \Delta_1$ , where  $\Delta_1 > 0$  is the delay between symptom onset  
127 and isolation. The parameter  $\Delta_1$  can be interpreted as the delay of taking a test after  
128 symptom onset, waiting for the result, and entering isolation, or alternatively as the  
129 delay between symptom onset and self-isolation. The remaining  $1 - f$  index cases



**Fig. 2** A) The timeline of infection for an infector–infectee transmission pair. The infector (index case) is initially infected at time  $t_1$ , and after a period of incubation develops symptoms at time  $t_{S_1}$ . The infectee (secondary case) is infected by the infector at time  $t_2$ , which can be before (presymptomatic) or after (symptomatic)  $t_{S_1}$ . The infectee then develops symptoms at time  $t_{S_2}$ . The generation time is then defined as  $t_2 - t_1$  (the time between infections), while the serial interval is defined as  $t_{S_2} - t_{S_1}$  (the time between symptom onsets). B) The generation time distribution  $[q(t|\theta_q) = q(t_2 - t_1|\theta_q)]$  follows a Weibull distribution (Ferretti et al., 2020a). C) The infectivity profile  $[p(t|\theta_p) = p(t_2 - t_{S_1}|\theta_p)]$  follows a shifted Student’s  $t$ -distribution (Ferretti et al., 2020a). D) The distribution of incubation times  $[g(t) = g(t_{S_1} - t_1)]$  follows a meta-distribution constructed from the mean of seven reported log-normal distributions as reported in Ferretti et al. (2020a) (Bi et al., 2020; Jiang et al., 2020; Lauer et al., 2020; Li et al., 2020; Linton et al., 2020; Ma et al., 2020; Zhang et al., 2020).

130 are not isolated ( $T \rightarrow \infty$ ). We can compute the number of secondary infections,  $n_2$ ,  
131 as a function of testing coverage  $f$  and delay  $\Delta_1$ , as shown in Fig. S1. For a given  
132 symptom onset time  $t_{S_1}$  and degree  $k_1$  of the index case, we have

$$n_2(f, \Delta_1 | t_{S_1}, k_1, \theta_p) = k_1 [fP(\Delta_1 | \theta_p) + (1 - f)]. \quad (2)$$

133 Averaging over  $k_1$ , which is distributed as  $p_{k_1}$ , and keeping  $t_{S_1}$  fixed as the reference  
134 time point, we arrive at

$$n_2(f, \Delta_1 | t_{S_1}, \theta_p) = R_e [fP(\Delta_1 | \theta_p) + (1 - f)], \quad (3)$$

135 where  $R_e = \langle k_1 \rangle$  is the mean of  $p_{k_1}$ , i.e. the average number of secondary infections  
136 in the absence of testing & isolation ( $f = 0$ ).

### 137 2.3 Quantifying the number of tertiary cases

138 Each secondary case has some potential to cause further infections, which will be  
139 the tertiary cases of the index case. The number of tertiary infections caused by a  
140 secondary case who is infected at  $t_2$  and isolated at time  $T$ , will be

$$k_2 \int_{t_2}^T dt_3 q(t_3 - t_2 | \theta_q) = k_2 Q(T - t_2 | \theta_q), \quad (4)$$

141 where  $k_2$  is the number of contacts of the secondary case,  $t_3$  is the infection time  
142 of the tertiary cases,  $q(t | \theta_q)$  is the generation time distribution, and  $Q(t | \theta_q) =$   
143  $\int_0^t dt' q(t' | \theta_q)$  is the cumulative generation time distribution. Note that we use the  
144 generation time distribution here, as our reference point is the time of infection ( $t_2$ ),  
145 whereas in Eq. (3) the reference point was the time of symptom onset ( $t_{S_1}$ ).

146 Under TTIQ interventions, the index and secondary cases can be isolated fol-  
147 lowing a positive test result and/or self-isolation after symptom onset. If an index  
148 case is confirmed positive, then contact tracing can be used to identify and quar-  
149 antine individuals who have recently been exposed to the confirmed case. Quar-  
150 antining these individuals prevents the onward infection of tertiary cases (Fig. 1B).  
151 We introduce three further parameters to quantify contact tracing: i)  $\tau > 0$ , the  
152 duration of lookback prior to symptom onset of the index case; ii)  $0 \leq g \leq 1$ , the  
153 probability to identify and quarantine a secondary contact that was infected within  
154 the contact tracing window; and iii)  $\Delta_2 > 0$ , the delay between isolating the index  
155 case and quarantining the identified secondary contacts.

156 There are many permutations of events that contribute to the number of tertiary  
157 cases under TTIQ, as shown in Fig. S2. The index case may not be detected ( $1 - f$ ),  
158 and hence contact tracing is not possible. If the index case is detected ( $f$ ), then  
159 a fraction  $g$  of the secondary cases that were infected within the contact tracing  
160 window ( $t_{S_1} - \tau \leq t_2 \leq t_{S_1} + \Delta_1$ ) are quarantined at time  $t_{S_1} + \Delta_1 + \Delta_2$  (Fig. 1B).  
161 The remaining fraction  $1 - g$ , as well as the secondary cases that were infected  
162 outside of the contact tracing window ( $t_2 < t_{S_1} - \tau$ ), are not quarantined. However,



163 the non-traced contacts may themselves be tested and become index cases that are  
164 isolated at time  $t_{S_2} + \Delta_1$ , where  $t_{S_2}$  is the symptom onset time of the secondary case.  
165 By considering these different scenarios, we arrive at an expression for the number  
166 of tertiary cases per index case under TTIQ,

$$\begin{aligned} n_3(f, \Delta_1, \tau, g, \Delta_2 | t_{S_1}, t_{S_2}, k_1, k_2, \theta_p, \theta_q) = & \\ & fgk_1k_2 \int_{t_{S_1}-\tau}^{t_{S_1}+\Delta_1} dt_2 p(t_2 - t_{S_1} | \theta_p) Q(t_{S_1} + \Delta_1 + \Delta_2 - t_2 | \theta_q) + \\ & f(1-g)k_1k_2 \int_{t_{S_1}-\tau}^{t_{S_1}+\Delta_1} dt_2 p(t_2 - t_{S_1} | \theta_p) [fQ(t_{S_2} + \Delta_1 - t_2 | \theta_q) + (1-f)] + \quad (5) \\ & fk_1k_2 \int_{-\infty}^{t_{S_1}-\tau} dt_2 p(t_2 - t_{S_1} | \theta_p) [fQ(t_{S_2} + \Delta_1 - t_2 | \theta_q) + (1-f)] + \\ & (1-f)k_1k_2 \int_{-\infty}^{\infty} dt_2 p(t_2 - t_{S_1} | \theta_p) [fQ(t_{S_2} + \Delta_1 - t_2 | \theta_q) + (1-f)]. \end{aligned}$$

167 We now have to average Eq. (5) over  $t_{S_2}$ ,  $k_1$ , and  $k_2$  to obtain the expected number  
168 of tertiary cases per index case under TTIQ. We first note that  $t_{S_2} = t_2 + \gamma$  for  
169 incubation period  $\gamma \geq 0$ . Hence we can write

$$\left\langle Q(t_{S_2} + \Delta_1 - t_2 | \theta_q) \right\rangle_{t_{S_2}} = \int_0^{\infty} d\gamma g(\gamma) Q(\gamma + \Delta_1 | \theta_q) = J(\Delta_1 | \theta_q), \quad (6)$$

170 where  $g(\gamma)$  is the incubation period distribution. Note that we have assumed the  
171 independence between symptom onset and infectivity, which may lead to an over-  
172 estimation of the fraction of tertiary cases prevented. Keeping  $t_{S_1}$  fixed as the refer-  
173 ence time point, averaging Eq. (5) over  $t_{S_2}$ ,  $k_1$ , and  $k_2$  gives the expected number of  
174 tertiary cases per index case under TTIQ:

$$\begin{aligned} n_3(f, \Delta_1, \tau, g, \Delta_2 | t_{S_1}, \theta_p, \theta_q) = & \\ & fg \langle k_1 \rangle \langle k_2 \rangle \int_{-\tau}^{\Delta_1} dt' p(t' | \theta_p) Q(\Delta_1 + \Delta_2 - t' | \theta_q) + \\ & f(1-g) \langle k_1 \rangle \langle k_2 \rangle [P(\Delta_1 | \theta_p) - P(-\tau | \theta_p)] [fJ(\Delta_1 | \theta_q) + (1-f)] + \quad (7) \\ & f \langle k_1 \rangle \langle k_2 \rangle P(-\tau | \theta_p) [fJ(\Delta_1 | \theta_q) + (1-f)] + \\ & (1-f) \langle k_1 \rangle \langle k_2 \rangle [fJ(\Delta_1 | \theta_q) + (1-f)], \end{aligned}$$

175 where we have substituted  $t' = t_2 - t_{S_1}$  such that

$$\int_{t_{S_1}-\tau}^{t_{S_1}+\Delta_1} dt_2 p(t_2 - t_{S_1} | \theta_p) Q(t_{S_1} + \Delta_1 + \Delta_2 - t_2 | \theta_q) = \int_{-\tau}^{\Delta_1} dt' p(t' | \theta_p) Q(\Delta_1 + \Delta_2 - t' | \theta_q). \quad (8)$$

176 Eq. (7) can be further simplified to

$$\begin{aligned} n_3(f, \Delta_1, \tau, g, \Delta_2 | t_{S_1}, \theta_p, \theta_q) = & \\ & fgR_e^2 \int_{-\tau}^{\Delta_1} dt' p(t' | \theta_p) Q(\Delta_1 + \Delta_2 - t' | \theta_q) + \quad (9) \\ & R_e^2 [f(1-g)P(\Delta_1 | \theta_p) + fgP(-\tau | \theta_p) + (1-f)] [fJ(\Delta_1 | \theta_q) + (1-f)]. \end{aligned}$$

177 Finally, in the absence of contact tracing ( $g = 0$ ), the number of tertiary cases  
178 under testing & isolation only is given by

$$n_3(f, \Delta_1 | t_{S_1}, \theta_p, \theta_q) = R_e^2 [fP(\Delta_1 | \theta_p) + (1 - f)] [fJ(\Delta_1 | \theta_q) + (1 - f)]. \quad (10)$$

## 179 2.4 Confidence intervals

180 The primary sources of uncertainty in the outcomes of this model come from the  
181 generation time distribution and infectivity profile, which are inferred from em-  
182 pirical serial interval distributions (Ferretti et al., 2020a). Following Ferretti et al.  
183 (2020a), we use a likelihood ratio test to extract sample parameter sets for each  
184 distribution that lie within the 95% confidence interval.

185 Concretely, we first identify the maximum likelihood parameter sets  $\hat{\theta}_p$  and  $\hat{\theta}_q$   
186 for the infectivity profile and generation time distribution, respectively. We then  
187 randomly sample the parameter space of each distribution, and keep 1,000 param-  
188 eter sets whose likelihood satisfies  $\ln \mathcal{L}(\theta) > \ln \mathcal{L}(\hat{\theta}) - \lambda_n/2$ , where  $\lambda_n$  is the 95%  
189 quantile of a  $\chi^2$  distribution with  $n$  degrees of freedom. The infectivity profile is  
190 described a shifted Student's  $t$ -distribution, which has  $n = 3$  parameters, while the  
191 generation time is described by a Weibull distribution with  $n = 2$  parameters.

192 We then use these sampled parameter sets to generate the number of secondary  
193 and tertiary cases, and the extrema of cases across all of these parameter sets deter-  
194 mines the 95% confidence interval for the number of cases. For the estimate of the  
195 number of secondary cases under testing & isolation [Eq. (3)], we only have to con-  
196 sider the uncertainty of the parameters of the infectivity profile  $\theta_p$ . Under the full  
197 TTIQ strategy, we need to use estimates of both  $\theta_p$  and  $\theta_q$ . We assume parameter  
198 independence, and keep all  $(\theta_p, \theta_q)$  combinations whose joint likelihood satisfies  
199  $\ln \mathcal{L}(\theta_p) + \ln \mathcal{L}(\theta_q) > \ln \mathcal{L}(\hat{\theta}_p) + \ln \mathcal{L}(\hat{\theta}_q) - \lambda_5/2$ .

## 200 2.5 Interactive app

201 To complement the results in this manuscript, and to allow readers to investigate  
202 different TTIQ parameter settings, we have developed an online interactive appli-  
203 cation. This can be found on the *CH Covid-19 Dashboard* at [https://ibz-shiny.ethz.  
204 ch/covidDashboard/](https://ibz-shiny.ethz.ch/covidDashboard/).

# 205 3 Results

## 206 3.1 Reducing cases by testing & isolating

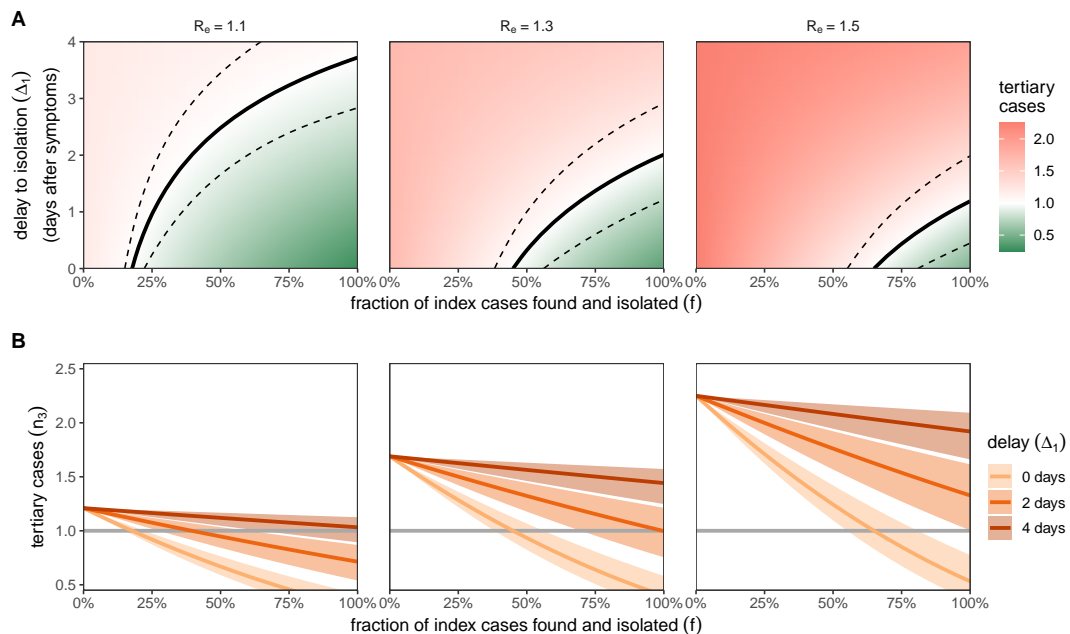
207 The efficacy of testing & isolating is determined by two parameters: the proba-  
208 bility  $f$  to find and isolate an infected individual; and the time delay  $\Delta_1$  between  
209 symptom onset and isolation of the index case. The expected number of secondary  
210 or tertiary cases [Eqs. (3) & (10)] is also dependent on the current intensity of the  
211 epidemic,  $R_e$ , which is the expected number of secondary cases per infected in the



212 absence of testing & isolating ( $f = 0$ ). This effective reproduction number depends  
 213 on the current suppression measures against SARS-CoV-2 transmission (social dis-  
 214 tancing, mask wearing, home office, etc.), as well as seasonality and levels of im-  
 215 munity/vaccination.

216 Epidemics can be controlled by testing & isolating if this intervention reduces  
 217 the expected number of secondary or tertiary cases per index case to below one. We  
 218 here focus on the number of tertiary cases, but results for the number of secondary  
 219 cases are qualitatively equivalent (Fig. S3).

220 The region of  $(f, \Delta_1)$  parameter space in which the number of tertiary cases  
 221 is less than one, i.e. the region in which the epidemic is controlled by testing &  
 222 isolating, is shrinking for higher  $R_e$  epidemics (Fig. 3A). Higher testing & isolation  
 223 coverage ( $f$ ) or shortened delays between symptom onset and isolation ( $\Delta_1$ ) are  
 224 required to control SARS-CoV-2 outbreaks as  $R_e$  increases. Increasing the fraction  
 225 of infecteds that are isolated buys more time to isolate them, but with diminishing  
 226 returns.



**Fig. 3** A) The impact of testing & isolation on the number of tertiary cases per index case,  $n_3$ , as a function of the testing coverage  $f$  (x-axis) and delay to isolation after symptom onset  $\Delta_1$  (y-axis) for different  $R_e$  values (columns) [Eq. (10)]. The black line shows  $n_3 = 1$ . Above this line (red zone) we have  $n_3 > 1$  and the epidemic is growing. Below this line we have  $n_3 < 1$  and the epidemic is suppressed. Dashed lines are the 95% confidence interval for this threshold. B) Lines correspond to slices of panel A at fixed delay  $\Delta_1 = 0, 2, \text{ or } 4$  days (colour). Shaded regions are 95% confidence intervals for the number of tertiary cases per index case. Horizontal grey line is the threshold for epidemic control ( $n_3 = 1$ ).

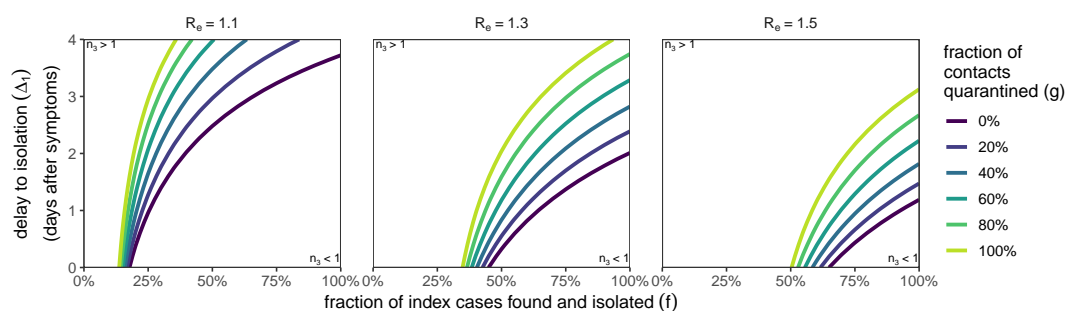
227 A SARS-CoV-2 outbreak with  $R_e = 1.1$  can be controlled by isolating as few as  
 228 18% [95% confidence interval (CI): 15%,22%] of infected cases at the time of symp-  
 229 tom onset ( $\Delta_1 = 0$  days) (Fig. 3B). If the infected index or secondary cases wait  
 230  $\Delta_1 = 2$  days after symptom onset before isolating (i.e. they wait for a test result),  
 231 then 39% [CI: 28%,60%] of infecteds would have to be isolated for the epidemic

232 to be controlled. Isolating after  $\Delta_1 = 4$  days would be insufficient to control the  
 233 epidemic even if all cases were isolated [CI: 65%,n.a.]. For faster-spreading SARS-  
 234 CoV-2 outbreaks ( $R_e = 1.5$ ), we would require 65% [CI: 55%,81%] of infecteds to  
 235 be isolated immediately after they develop symptoms ( $\Delta_1 = 0$  days) to control the  
 236 epidemic. With a delay  $\Delta_1 \geq 2$  days, testing & isolating would be insufficient to  
 237 control the epidemic even if 100% of infecteds are isolated. We note that the fre-  
 238 quency of asymptomatic cases (20%; Buitrago-Garcia et al. (2020)) means that we  
 239 would not be able to isolate 100% of infecteds if we wait for symptoms to develop.

### 240 3.2 Reducing cases by additional contact tracing & quarantine

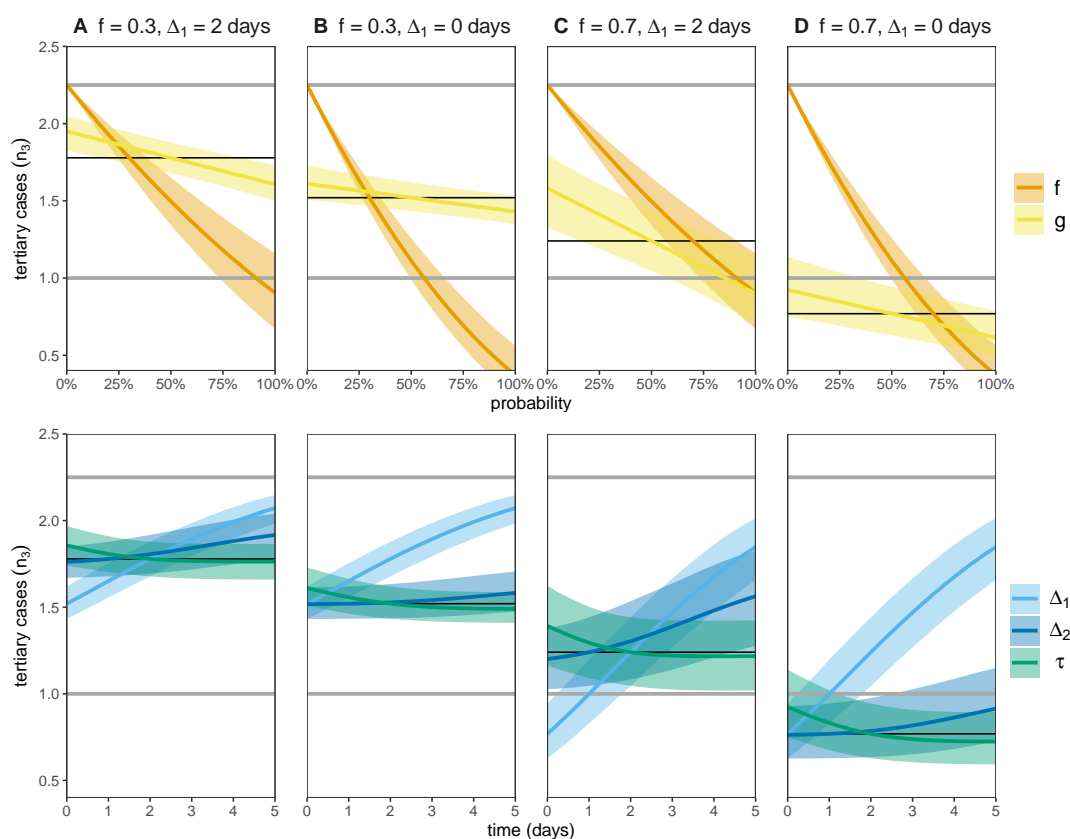
241 The efficacy of tracing & quarantine is determined by three further parameters: the  
 242 duration of the contact tracing window prior to symptom onset in the index case  $\tau$ ;  
 243 the probability to identify and quarantine a secondary case that was infected by an  
 244 index case within the contact tracing window  $g$ ; and the delay between isolating  
 245 the index case and quarantining the secondary cases  $\Delta_2$ . The expected number of  
 246 tertiary cases [Eq. (7)] is also dependent on the intensity of the epidemic in the  
 247 absence of TTIQ,  $R_e$ , as well as the probability ( $f$ ) and delay ( $\Delta_1$ ) of finding and  
 248 isolating an index case.

249 The impact that contact tracing has on epidemic control can be seen by varying  
 250 the parameter  $g$ . For  $g = 0$ , no contacts are traced & quarantined, and hence we  
 251 return to the testing & isolation strategy (Fig. 3). By increasing  $g$ , we expand the  
 252 parameter space in which  $n_3 < 1$  (Fig. 4), i.e. contract tracing allows an epidemic  
 253 to be controlled for lower fractions of index cases found ( $f$ ) and/or longer delays  
 254 to isolating the index case after they develop symptoms ( $\Delta_1$ ).



**Fig. 4** The impact of tracing & quarantine on the number of tertiary cases per index case,  $n_3$ , as a function of the testing coverage  $f$  (x-axis) and delay to isolation after symptom onset  $\Delta_1$  (y-axis), for different contact tracing success probabilities  $g$  (colour) across different  $R_e$  values (columns) [Eq. (7)]. We fix  $\Delta_2 = 2$  days and  $\tau = 2$  days. The contours divide the regions where  $n_3 > 1$  (the epidemic is growing) and  $n_3 < 1$  (the epidemic is suppressed). The contours for  $g = 0$  are equivalent to the contours in Fig. 3. We do not show confidence intervals for clarity of presentation.

255 To visualise the impact of each parameter on the number of tertiary cases, we  
 256 consider focal parameter sets for the five TTIQ parameters,  $(f, g, \Delta_1, \Delta_2, \tau)$ . We  
 257 then calculate the expected number of tertiary cases when we perturb each single  
 258 parameter, keeping the remaining four parameters fixed (Fig. 5).



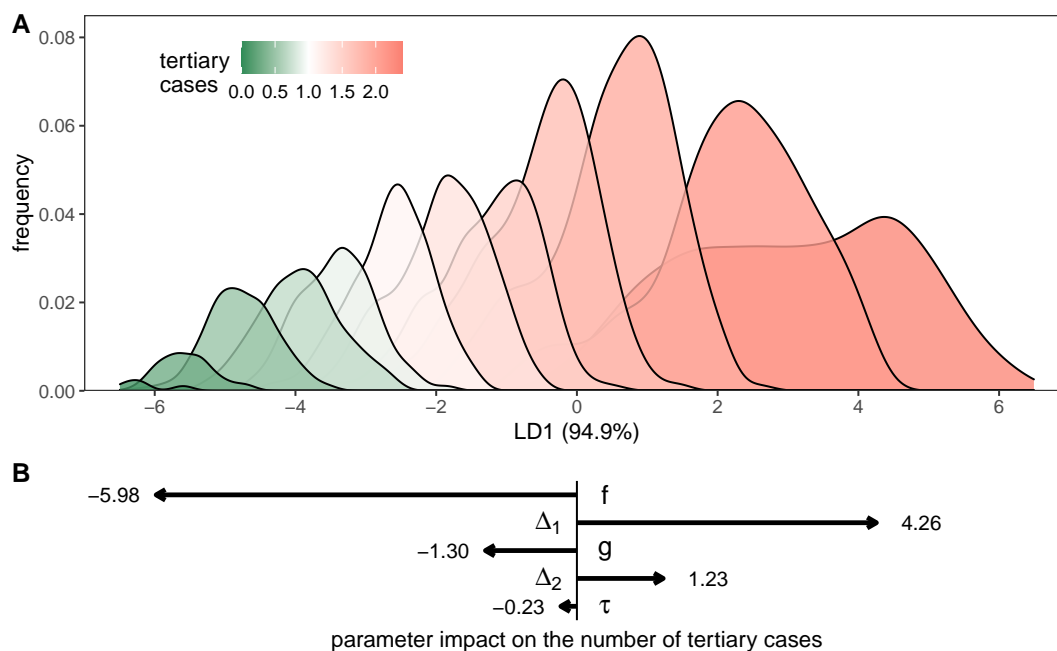
**Fig. 5** The number of tertiary cases per index case in the presence of TTIQ interventions. We set  $R_e = 1.5$  throughout, which is the intensity of the epidemic in the absence of TTIQ. We consider four focal TTIQ parameter combinations, with  $f \in \{0.3, 0.7\}$ ,  $\Delta_1 \in \{0, 2\}$  days,  $g = 0.5$ ,  $\Delta_2 = 1$  day, and  $\tau = 2$  days. The number of tertiary cases for the focal parameter sets are shown as thin black lines. With  $f = 0$  (no TTIQ) we expect  $R_e^2$  tertiary cases (upper grey line). We then vary each TTIQ parameter individually, keeping the remaining four parameters fixed at the focal values. The upper panel shows the probability parameters  $f$  and  $g$ , while the lower panel shows the parameters which carry units of time (days). The critical threshold for controlling an epidemic is one tertiary case per index case (lower grey line).

259           Modifying the fraction of index cases that are identified and isolated ( $f$ ) has the  
260 largest effect of all parameter changes. By identifying more index cases (increasing  
261  $f$ ), we not only prevent the onward transmission to new secondary cases through  
262 isolation, but we also allow infected contacts to be traced and quarantined.

263           Increasing the fraction of secondary cases that are quarantined ( $g$ ) has a smaller  
264 return than increasing  $f$ . If only 30% of index cases are identified, then increasing  
265  $g$  results in a small reduction of the number of tertiary cases and for  $R_e = 1.5$  the  
266 epidemic cannot be controlled even if all secondary cases ( $g = 1$ ) of known index  
267 cases are quarantined (Figs. 5A & B). However, if a large fraction of index cases are  
268 identified ( $f = 0.7$ ), then increasing  $g$  can control an epidemic that would be out of  
269 control in the absence of contact tracing (Figs. 5C & D).

270           After increasing  $f$ , the next most effective control strategy is to reduce the delay  
271 between symptom onset and isolation of the index case ( $\Delta_1$ ). Reducing the time  
272 taken to quarantine secondary cases has a lesser effect on the total number of ter-  
273 tiary cases. Finally, looking back further while contact tracing (increasing  $\tau$ ) allows  
274 more secondary cases to be traced & quarantined. However, this does not trans-  
275 late into a substantial reduction in the number of tertiary cases as the extra cases  
276 which are traced have already been infectious for a long time, and will thus have  
277 less remaining infectivity potential. Hence increasing  $\tau$  comes with diminishing  
278 returns.

279           To check the robustness of these effects across all parameter combinations (not  
280 just varying a single parameter), we performed uniform parameter sampling and  
281 used linear discriminant analysis (LDA) to capture the impact that each parameter  
282 has on the number of tertiary cases (Fig. 6). We find that  $f$  is the dominant param-  
283 eter to determine the number of tertiary cases, followed by  $\Delta_1$ ,  $g$ ,  $\Delta_2$ , and finally  $\tau$   
284 has the smallest impact (Fig. 6B).



**Fig. 6** A) Linear discriminant analysis (LDA) of the impact of TTIQ strategies on the number of tertiary cases. We fix  $R_e = 1.5$  and then uniformly sample parameter combinations from  $f \in [0, 1]$ ,  $g \in [0, 1]$ ,  $\Delta_1 \in [0, 5]$  days,  $\Delta_2 \in [0, 5]$  days, and  $\tau \in [0, 5]$  days. The number of tertiary cases is calculated [Eq. (7)] for each parameter combination, and the output ( $n_3$ ) is categorised into bins of width 0.2 (colour). We then use LDA to construct a linear combination (LD1) of the five (normalised) TTIQ parameters which maximally separates the output categories. We then predict the LD1 values for each parameter combination, and construct a histogram of these values for each category. B) The components of the LD1 vector. By multiplying the (normalised) TTIQ parameters by the corresponding vector component, we arrive at the LD1 prediction which corresponds with the number of tertiary cases under that TTIQ strategy. Longer arrows (larger magnitude components) correspond to a parameter having a larger effect on the output.

## 285 4 Discussion

286 By combining empirically well-supported estimates of the infection timing of SARS-  
287 CoV-2 with a simple model of transmission, we have calculated the impact of  
288 test-trace-isolate-quarantine (TTIQ) interventions against the spread of COVID-19.  
289 Overall, we find that TTIQ has the potential to control epidemics with an  $R_e$  of up  
290 to 1.5. This would be practically infeasible under testing & isolation alone, which  
291 would require 65% of positive cases to isolate immediately after the time of symp-  
292 tom onset to be effective. By increasing the fraction of contacts that are identified  
293 and quarantined, we can successfully suppress an epidemic even if fewer index  
294 cases are isolated or if isolation is delayed by up to 2 days. Based on this analysis,  
295 we find that the greatest impact comes from increased identification of index cases  
296 and reduction of delay between symptom onset and isolation. These parameters  
297 have a compound effect on overall transmission as they contribute to the direct re-  
298 duction of onward infection from an index case, and they allow more contacts to  
299 be traced earlier.

300 Increasing the duration of the contact tracing window by looking back further  
301 in time has limited return under our model of forward contact tracing (identifying  
302 who is infected by the index case). However, if we were interested in identifying  
303 the source of infection (backwards contact tracing), then increasing the duration of  
304 the contact tracing window could lead to the identification of transmission clusters.

305 When comparing to the findings of Ferretti et al. (2020b), we find that contact  
306 tracing has less impact on epidemic suppression, and that the speed of contact trac-  
307 ing is of secondary importance to the speed of isolating index cases. This difference  
308 can be attributed to Ferretti et al. (2020b)'s approach to model contact tracing and  
309 isolation as independent events (i.e. tracing an index cases' contacts says nothing  
310 about whether the index case has been isolated), which leads to an overestimation  
311 of contact tracing's impact (Fraser et al., 2004).

312 In Kretzschmar et al. (2020) – this time with contact tracing dependent on test-  
313 ing & isolation – they concluded that reducing the delay to isolation after symptom  
314 onset has the greatest impact on TTIQ effectiveness. This conclusion was made  
315 without systematic analysis of all parameters, and we now find that changing test-  
316 ing & isolation coverage has a greater effect on the number of tertiary cases.

317 Our approach and results are crucially dependent on the distribution of infec-  
318 tion times (generation time and infectivity profile) and although we have used  
319 well-supported estimates, there's inherent limitations to deriving these distribu-  
320 tions based on transmission pairs. These transmission pairs are representative of  
321 symptomatic cases, but the infectiousness profiles for fully asymptomatic cases are  
322 unknown (Ferretti et al., 2020a). We have assumed that asymptomatic cases have  
323 the same infectiousness profiles as symptomatic cases, but if asymptomatic cases  
324 are infectious for a shorter duration, or have a lower probability of transmission  
325 during a contact (Buitrago-Garcia et al., 2020), then we would overestimate the



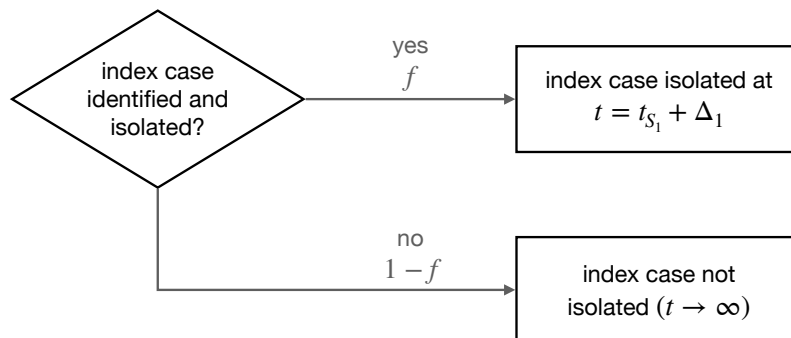
326 transmission prevented by quarantining these cases. We do account for uncertainty  
327 in the infection time distributions, and this uncertainty is carried through into our  
328 analysis and is captured by the confidence intervals shown in the figures and re-  
329 ported in the text.

330 In terms of modelling the TTIQ process, we have assumed that identified in-  
331 dex cases are isolated and have their contacts traced. If the index case fails to  
332 adhere to the isolation protocol, then we will overestimate the amount of transmis-  
333 sion prevented by isolation. However, uncertainty in whether contacts adhere to  
334 quarantine protocols, or whether contact tracers actually identify contacts, is con-  
335 tained in the parameter  $g$ . Lower adherence to quarantine or missed cases due to  
336 overwhelmed contact tracers is captured by lowering  $g$ .

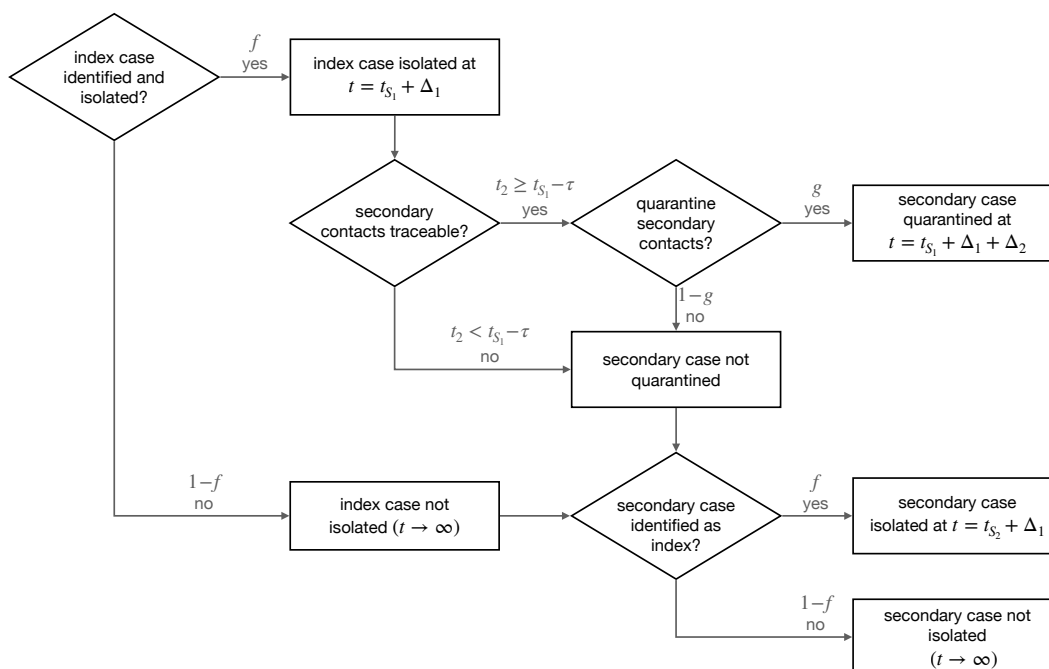
337 Here we have shown through systematic analysis that TTIQ processes can be  
338 optimised to bring the effective reproductive number below one. Crucially, contact  
339 tracing & quarantine adds security to testing & isolating strategies, where high  
340 coverage and short delays are necessary to control an epidemic. By improving the  
341 testing & isolation coverage and reducing the delay to index case isolation, we can  
342 greatly increase the efficacy of the overall TTIQ strategy.

343

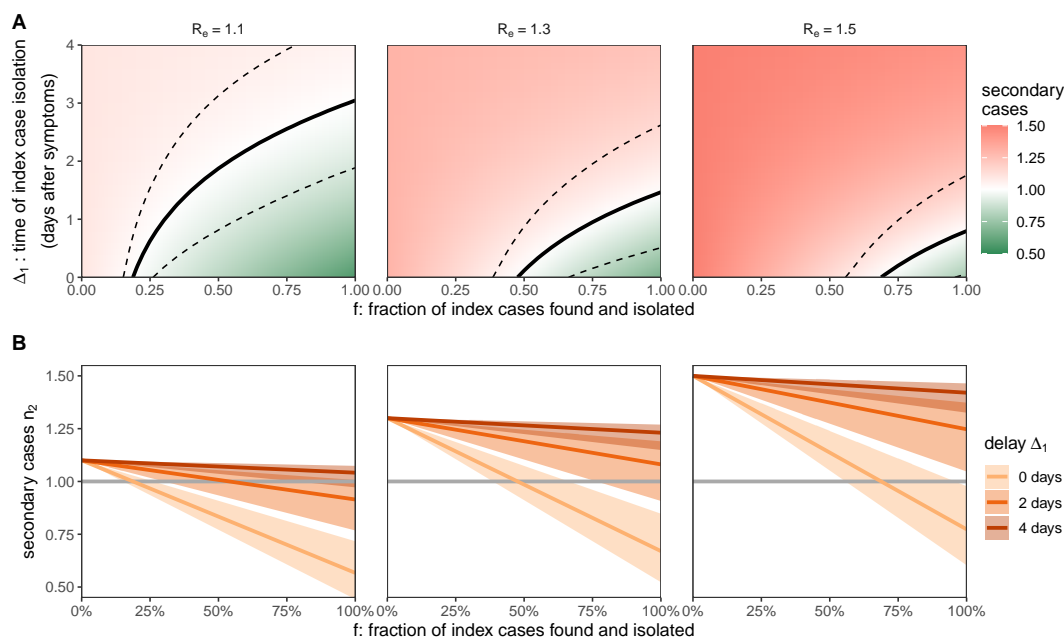
## Supplemental figures



**Fig. S1** Flowchart for computing the number of secondary cases under testing & isolation.



**Fig. S2** Flowchart for computing the number of tertiary cases under TTIQ.



**Fig. S3** A) The impact of testing & isolation on the number of secondary cases per index case,  $n_2$ , as a function of the testing coverage  $f$  (x-axis) and delay to isolation after symptom onset  $\Delta_1$  (y-axis) for different  $R_e$  values (columns) [Eq. (3)]. The black line shows  $n_2 = 1$ . Above this line (red zone) we have  $n_2 > 1$  and the epidemic is growing. Below this line we have  $n_2 < 1$  and the epidemic is suppressed. Dashed lines are the 95% confidence interval for this threshold. B) Lines correspond to slices of panel A at fixed delay  $\Delta_1 = 0, 2$ , or 4 days (colour). Shaded regions are 95% confidence intervals for the number of secondary cases per index case. Horizontal grey line is the threshold for epidemic control ( $n_2 = 1$ ).

## References

344

345 Adam, D. C., et al. (2020). Clustering and Superspreading Potential of SARS-CoV-2  
346 Infections in Hong Kong. *Nature Medicine*, (pp. 1–6)., <https://doi.org/10.1038/s41591-020-1092-0>.

347

348 Ashcroft, P., Huisman, J. S., Lehtinen, S., Bouman, J. A., Althaus, C. L., Regoes,  
349 R. R., & Bonhoeffer, S. (2020a). COVID-19 Infectivity Profile Correction. *Swiss  
350 Medical Weekly*, 150, w20336, <https://doi.org/10.4414/smw.2020.20336>.

351 Ashcroft, P., Lehtinen, S., & Bonhoeffer, S. (2020b). Quantifying the Impact of Quar-  
352 antine Duration on COVID-19 Transmission. *medRxiv*, (pp. 2020.09.24.20201061).,  
353 <https://doi.org/10.1101/2020.09.24.20201061>.

354 Bi, Q., et al. (2020). Epidemiology and Transmission of COVID-19 in 391 Cases  
355 and 1286 of Their Close Contacts in Shenzhen, China: A Retrospective Cohort  
356 Study. *The Lancet Infectious Diseases*, 20(8), 911–919, [https://doi.org/10.1016/S1473-3099\(20\)30287-5](https://doi.org/10.1016/S1473-3099(20)30287-5).

357

358 Buitrago-Garcia, D., et al. (2020). Occurrence and Transmission Potential of Asymp-  
359 tomatic and Presymptomatic SARS-CoV-2 Infections: A Living Systematic Re-  
360 view and Meta-Analysis. *PLOS Medicine*, 17(9), e1003346, <https://doi.org/10.1371/journal.pmed.1003346>.

361

362 Endo, A., Centre for the Mathematical Modelling of Infectious Diseases COVID-  
363 19 Working Group, Abbott, S., Kucharski, A. J., & Funk, S. (2020). Esti-  
364 mating the Overdispersion in COVID-19 Transmission Using Outbreak Sizes

- 365 Outside China. *Wellcome Open Research*, 5, 67, [https://doi.org/10.12688/](https://doi.org/10.12688/wellcomeopenres.15842.3)  
366 [wellcomeopenres.15842.3](https://doi.org/10.12688/wellcomeopenres.15842.3).
- 367 Ferretti, L., et al. (2020a). The Timing of COVID-19 Transmission. *medRxiv*, (pp.  
368 2020.09.04.20188516)., <https://doi.org/10.1101/2020.09.04.20188516>.
- 369 Ferretti, L., et al. (2020b). Quantifying SARS-CoV-2 Transmission Suggests Epi-  
370 demic Control with Digital Contact Tracing. *Science*, 368(6491), [https://doi.org/](https://doi.org/10.1126/science.abb6936)  
371 [10.1126/science.abb6936](https://doi.org/10.1126/science.abb6936).
- 372 Fraser, C., Riley, S., Anderson, R. M., & Ferguson, N. M. (2004). Factors That Make  
373 an Infectious Disease Outbreak Controllable. *Proceedings of the National Academy*  
374 *of Sciences*, 101(16), 6146–6151, <https://doi.org/10.1073/pnas.0307506101>.
- 375 He, X., et al. (2020). Temporal Dynamics in Viral Shedding and Transmissibil-  
376 ity of COVID-19. *Nature Medicine*, 26(5), 672–675, [https://doi.org/10.1038/](https://doi.org/10.1038/s41591-020-0869-5)  
377 [s41591-020-0869-5](https://doi.org/10.1038/s41591-020-0869-5).
- 378 Jiang, X., et al. (2020). Is a 14-Day Quarantine Period Optimal for Effec-  
379 tively Controlling Coronavirus Disease 2019 (COVID-19)? *medRxiv*, (pp.  
380 2020.03.15.20036533)., <https://doi.org/10.1101/2020.03.15.20036533>.
- 381 Kretzschmar, M. E., Rozhnova, G., Bootsma, M. C. J., van Boven, M., van de Wiggert,  
382 J. H. H. M., & Bonten, M. J. M. (2020). Impact of Delays on Effectiveness of  
383 Contact Tracing Strategies for COVID-19: A Modelling Study. *The Lancet Public*  
384 *Health*, 5(8), e452–e459, [https://doi.org/10.1016/S2468-2667\(20\)30157-2](https://doi.org/10.1016/S2468-2667(20)30157-2).
- 385 Kucharski, A. J., et al. (2020). Effectiveness of Isolation, Testing, Contact Tracing,  
386 and Physical Distancing on Reducing Transmission of SARS-CoV-2 in Different  
387 Settings: A Mathematical Modelling Study. *The Lancet Infectious Diseases*, 20(10),  
388 1151–1160, [https://doi.org/10.1016/S1473-3099\(20\)30457-6](https://doi.org/10.1016/S1473-3099(20)30457-6).
- 389 Lauer, S. A., et al. (2020). The Incubation Period of Coronavirus Disease 2019  
390 (COVID-19) From Publicly Reported Confirmed Cases: Estimation and Appli-  
391 cation. *Annals of Internal Medicine*, 172(9), 577–582, [https://doi.org/10.7326/](https://doi.org/10.7326/M20-0504)  
392 [M20-0504](https://doi.org/10.7326/M20-0504).
- 393 Lehtinen, S., Ashcroft, P., & Bonhoeffer, S. (2020). On the Relationship be-  
394 tween Serial Interval, Infectiousness Profile and Generation Time. *medRxiv*, (pp.  
395 2020.09.18.20197210)., <https://doi.org/10.1101/2020.09.18.20197210>.
- 396 Li, Q., et al. (2020). Early Transmission Dynamics in Wuhan, China, of Novel Coro-  
397 navirus–Infected Pneumonia. *New England Journal of Medicine*, 382, 1199–1207,  
398 <https://doi.org/10.1056/NEJMoa2001316>.
- 399 Linton, N. M., et al. (2020). Incubation Period and Other Epidemiological Charac-  
400 teristics of 2019 Novel Coronavirus Infections with Right Truncation: A Statistical  
401 Analysis of Publicly Available Case Data. *Journal of Clinical Medicine*, 9(2), 538,  
402 <https://doi.org/10.3390/jcm9020538>.
- 403 Ma, S., et al. (2020). Epidemiological Parameters of Coronavirus Disease 2019: A  
404 Pooled Analysis of Publicly Reported Individual Data of 1155 Cases from Seven  
405 Countries. *medRxiv*, (pp. 2020.03.21.20040329)., [https://doi.org/10.1101/2020.](https://doi.org/10.1101/2020.03.21.20040329)  
406 [03.21.20040329](https://doi.org/10.1101/2020.03.21.20040329).

- 407 Moghadas, S. M., Fitzpatrick, M. C., Sah, P., Pandey, A., Shoukat, A., Singer, B. H.,  
408 & Galvani, A. P. (2020). The Implications of Silent Transmission for the Control  
409 of COVID-19 Outbreaks. *Proceedings of the National Academy of Sciences*, 117(30),  
410 17513–17515, <https://doi.org/10.1073/pnas.2008373117>.
- 411 Quilty, B. J., Clifford, S., Flasche, S., Kucharski, A. J., CMMID COVID-19 Working  
412 Group, & Edmunds, W. J. (2020). Quarantine and Testing Strategies in Contact  
413 Tracing for SARS-CoV-2. *medRxiv*, (pp. 2020.08.21.20177808)., <https://doi.org/10.1101/2020.08.21.20177808>.
- 415 Riou, J. & Althaus, C. L. (2020). Pattern of Early Human-to-Human Transmission  
416 of Wuhan 2019 Novel Coronavirus (2019-nCoV), December 2019 to January 2020.  
417 *Eurosurveillance*, 25(4), 2000058, [https://doi.org/10.2807/1560-7917.ES.2020.25.](https://doi.org/10.2807/1560-7917.ES.2020.25.4.2000058)  
418 [4.2000058](https://doi.org/10.2807/1560-7917.ES.2020.25.4.2000058).
- 419 Salathé, M., et al. (2020). COVID-19 Epidemic in Switzerland: On the Importance  
420 of Testing, Contact Tracing and Isolation. *Swiss Medical Weekly*, 150(1112), <https://doi.org/10.4414/smw.2020.20225>.
- 422 WHO (2020). Contact Tracing in the Context of COVID-19. *WHO/2019-*  
423 *nCoV/Contact\_Tracing/2020.1*.
- 424 Zhang, J., et al. (2020). Evolving Epidemiology and Transmission Dynamics of  
425 Coronavirus Disease 2019 Outside Hubei Province, China: A Descriptive and  
426 Modelling Study. *The Lancet Infectious Diseases*, 20(7), 793–802, [https://doi.org/10.1016/S1473-3099\(20\)30230-9](https://doi.org/10.1016/S1473-3099(20)30230-9).  
427