

1 **Initial vancomycin versus metronidazole for the treatment of**
2 **first-episode non-severe *Clostridioides difficile* infection**

3
4 **Kevin Zhang MD(c),^{1,*} Patricia Beckett RN,² Salaheddin Abouanaser MD,² Marek**
5 **Smieja MD, PhD^{2,3}**

6
7 ¹ Faculty of Medicine, University of Toronto, Toronto, Ontario, M5S 1A8, Canada

8 ² St. Joseph's Healthcare Hamilton, Hamilton, Ontario, L8N 4A6, Canada

9 ³ Department of Pathology and Molecular Medicine, McMaster University, Hamilton,
10 Ontario, L8S 4L8, Canada

11

12 ***Corresponding author:** kevink.zhang@mail.utoronto.ca

13

14 **Email Addresses**

15 KZ: kevink.zhang@mail.utoronto.ca

16 PB: pbeckett@stjosham.on.ca

17 SA: salaheddin.abouanaser@medportal.ca

18 MS: smiejam@mcmaster.ca

19

20 **Correspondence**

21 Kevin Zhang

22 Faculty of Medicine, University of Toronto

23 1 King's College Circle

24 Toronto, ON M5S 1A8

25 kevink.zhang@mail.utoronto.ca, (+1)416-978-6585

26

27 **Keywords:** *Clostridioides difficile*; *Clostridium difficile*; vancomycin; metronidazole;
28 recurrence; incidence; mortality

29

30

31

32 Abstract

33 **Background:** *Clostridioides difficile* infection (CDI) is an important cause of nosocomial
34 diarrhea. Given the discrepancy in current treatment guidelines for mild CDI, we sought
35 to evaluate the use of initial vancomycin versus metronidazole for the treatment of first-
36 episode non-severe infection.

37 **Methods:** We conducted a retrospective cohort study of all adult inpatients with first-
38 episode CDI at our institution from January 2013 to May 2018. CDI was defined as a
39 positive *Clostridioides difficile* loop-mediated isothermal amplification assay, in
40 conjunction with ≥ 3 type 5–7 stools on the Bristol stool scale. To evaluate the impact of
41 initial vancomycin treatment on adverse clinical outcomes in patients with first-episode
42 non-severe CDI, the initial vancomycin versus initial metronidazole cohorts were first
43 examined in an unadjusted logistic regression analysis for any combination of
44 recurrence, new incident infection, and all-cause 30-day mortality, followed by an
45 adjusted multivariable analysis.

46 **Results:** A total of 737 cases were included. Patients had a median age of 72.3 years
47 (Q1: 61.2, Q3: 83.3) and 628 (85.2%) were classified as non-severe CDI. Among
48 patients with non-severe CDI ($n = 628$), recurrence, new incident infection, and 30-day
49 mortality rates were 15.1%, 7.7%, and 13.1%, respectively, when treated with initial
50 metronidazole, compared to 16.9%, 4.2%, and 11.4%, respectively, when treated with
51 initial vancomycin. In an adjusted multivariable analysis, the use of initial vancomycin for
52 the treatment of non-severe CDI was associated with a reduction in new incident
53 infection (OR_{adj} : 0.18; 95% CI: 0.04–0.75; $P=0.019$) and the composite outcome of new
54 incident infection or 30-day mortality (OR_{adj} : 0.42; 95% CI: 0.22–0.79; $P=0.007$),
55 compared to initial metronidazole.

56 **Conclusions:** Initial vancomycin was associated with a reduced rate of new incident
57 infection and the composite outcome of new incident infection or all-cause 30-day
58 mortality in the treatment of adult inpatients with first-episode non-severe CDI,
59 compared to initial metronidazole. Our findings support the use of initial vancomycin for
60 all inpatients with CDI, irrespective of disease severity, as recommended by Infectious
61 Diseases Society of America guidelines.

62

63 **Keywords:** *Clostridioides difficile*; *Clostridium difficile*; vancomycin; metronidazole;
64 recurrence; incidence; mortality

65

66

67 **Background**

68 *Clostridioides difficile* infection (CDI) manifests itself in patients with an altered gut
69 microbiota, and is commonly caused by exposure to antibiotics [1]. As the leading cause
70 of nosocomial diarrhea, CDI continues to be a major burden within healthcare
71 institutions and in the community [1]. Patients with CDI suffer from copious amounts of
72 uncontrolled diarrhea, leading to a higher risk of life-threatening colitis and a lower
73 quality of life. Despite undergoing lengthy courses of antimicrobial therapy, however,
74 recurrence is common, with approximately 20% of patients experiencing debilitating
75 episodes of repeated disease [2]. Recurrent CDI is associated with a greater risk for
76 future recurrence and severe complications such as hypotension, perforation, and toxic
77 megacolon [2]. Therefore, early interventions aimed at preventing recurrent CDI and
78 reinfection are needed to improve outcomes, decrease the number of patient days
79 spent in isolation, and improve quality of life.

80 St. Joseph's Healthcare Hamilton is a multi-site teaching hospital located in Hamilton,
81 Ontario, Canada with a dedicated *Clostridioides difficile* consultation service for
82 inpatients and referred outpatients. While the consultation team may offer fecal
83 microbiota transplantation to patients with multiple CDI episodes or refractory disease
84 [3, 4], clinical interventions for first-episode CDI primarily involve the use of antibiotics.
85 In the past, metronidazole was indicated for non-severe CDI at our institution, while
86 vancomycin was reserved for febrile patients with elevated white counts or for recurrent
87 episodes. In recent years, however, there has been a shift to initial vancomycin to treat
88 first-episode non-severe CDI at our institution, which is consistent with recent guidelines
89 published by the Infectious Diseases Society of America (IDSA) [5]. Importantly,
90 guidelines published by the European Society of Clinical Microbiology and Infectious
91 Diseases, the World Society of Emergency Surgery, and the Australasian Society of
92 Infectious Diseases still recommend the use of metronidazole for the first episode of
93 non-severe disease [6–8].

94 Although initial vancomycin treatment is recommended by most guidelines to treat
95 severe CDI, there exists a discrepancy in treatment recommendations for first-episode
96 non-severe CDI [5–8]. There have been limited studies with long-term follow-up
97 evaluating the use of initial vancomycin compared to initial metronidazole to treat non-
98 severe inpatient CDI. In two large randomized controlled trials with follow-up of 3 weeks
99 and 4 weeks, respectively, subgroup analyses stratified by severity did not demonstrate
100 significant differences in relapse rates between the vancomycin and metronidazole
101 treatment groups for non-severe CDI [9, 10]. Similarly, two cohort studies reported that
102 relapse rates and 30-day mortality did not differ among patients with mild-to-moderate
103 CDI treated with metronidazole or vancomycin [11, 12]. Therefore, we sought to identify
104 predictors of adverse clinical outcomes and evaluate the use of initial vancomycin

105 versus metronidazole for the treatment of first-episode non-severe CDI among adult
106 inpatients.

107 **Methods**

108 We conducted a retrospective cohort study of all adult inpatients with first-episode CDI
109 at our institution from January 1, 2013 to May 31, 2018. Patients were identified from
110 hospital infection control registries maintained by Infection Prevention and Control, and
111 all entries were validated against data reported to the Ontario Ministry of Health and
112 Long-Term Care. A CDI episode was characterized clinically as 3 or more type 5–7
113 diarrheal stools on the Bristol stool scale, together with a positive *Clostridioides difficile*
114 toxin gene loop-mediated isothermal amplification assay, in accordance with IDSA
115 guidelines [5]. Patients with a prior history of CDI were excluded from the study.
116 Similarly, colonized patients who had a positive toxin assay but did not meet the clinical
117 criteria of 3 or more type 5–7 loose stools were excluded. Data abstracted included:
118 demographics, specimen collection date, date of symptom onset, source of acquisition,
119 unit in which CDI was first diagnosed (medical, surgical, or nephrology), clinical
120 indicators at the time of diagnosis, CDI treatment, number of isolation days, and
121 outcomes including: recurrence, new incident infection, and death. Time to treatment
122 and time to recurrence were measured from the start of the initial CDI diagnosis.
123 Hospital-acquired infection (HAI) was defined as CDI present >72 hours after admission
124 or infection present on admission, whereas non-HAI was defined as CDI present ≤72
125 hours after admission [13].

126 The primary exposures in this study were the treatment of first-episode non-severe CDI
127 with initial vancomycin or metronidazole. The outcomes of interest were recurrence,
128 new incident infection, and all-cause 30-day mortality. All patients were followed for 26
129 weeks from the date of their initial CDI diagnosis. Recurrence was defined as a CDI
130 case occurring after an episode with positive assay result in the previous 2–8 weeks,
131 while new incident infection was defined as a CDI case occurring after more than 8
132 weeks [5]. All-cause 30-day mortality was defined as death for any reason within 30
133 days of CDI diagnosis. CDI severity was defined according to guidelines published by
134 the European Society of Clinical Microbiology and Infectious Diseases (modified to
135 exclude rise in serum creatinine ≥1.5 times the pre-morbid level as pre-morbid clinical
136 data were unavailable) [6]. A patient with any one of: white blood cell count >15×10⁹/L,
137 albumin level <30g/L, or serum creatinine level ≥133μM was considered to have severe
138 CDI [6].

139 **Statistical Analysis**

140 Logistic regression was used to determine prognostic factors for the composite outcome
141 of recurrence or all-cause 30-day mortality for the overall cohort. Recurrence was

142 selected as a patient-important outcome, as it is associated with a greater risk for
143 complications and adverse outcomes [2]. All-cause 30-day mortality was included in the
144 composite outcome as it is a potential competing event for recurrence. All factors were
145 determined a priori based on published guidelines [5–8]. Univariable analysis with $P < 0.2$
146 was used, followed by stepwise selection in a multivariable logistic regression model.
147 The number of variables entered into the model enabled 80% study power with 15
148 events per factor.

149 To evaluate the impact of initial vancomycin treatment on adverse clinical outcomes in
150 patients with first-episode non-severe CDI, the initial vancomycin versus initial
151 metronidazole cohorts were first examined in an unadjusted logistic regression analysis
152 for any combination of recurrence, new incident infection, and all-cause 30-day
153 mortality. Prognostic factors for the overall cohort were then added to the adjusted
154 multivariable analysis.

155 **Results**

156 A total of 737 inpatients with first-episode CDI were included in our study. Their
157 demographics, clinical data at the time of CDI diagnosis, initial CDI treatment, and
158 outcomes are summarized in Table 1. Patients had a median age of 72.3 years (Q1:
159 61.2, Q3: 83.3) and 628 (85.2%) were classified to have non-severe CDI. 357 (48.4%)
160 patients were classified to have hospital-acquired infection, while 309 (41.9%) and 71
161 (9.6%) were classified to have acquired CDI in the community and other institutions,
162 respectively. Most patients, 496 (67.3%), were initially diagnosed with CDI in a medical
163 setting. At the time of CDI diagnosis, patients had an average temperature of 37.1°C
164 (SD: 0.8) and a median white blood cell count of $12.3 \times 10^9/L$ (Q1: 8.7, Q3: 18.1). The
165 median time to treatment following CDI diagnosis was 2 days (Q1: 1, Q3: 5). Most
166 patients, 539 (73.1%), received initial metronidazole treatment, while 130 (17.6%)
167 received initial vancomycin. Patients experienced a recurrence rate of 15.5%, a new
168 incident infection rate of 6.9%, and a 30-day mortality rate of 12.8%. The median time to
169 recurrence was 29 days (Q1: 24, Q3: 39) and the median length of time spent in
170 isolation was 17 days (Q1: 7, Q3: 34).

171 **Overall cohort**

172 The results of the multivariable logistic regression model to determine prognostic factors
173 for the composite outcome of recurrence or all-cause 30-day mortality for the overall
174 cohort are summarized in Table 2. Predictors of the composite outcome were: age ≥ 65
175 years (OR_{adj} : 2.01; 95% CI: 1.38–2.94; $P < 0.001$), hospital-acquired infection (OR_{adj} :
176 2.00; 95% CI: 1.44–2.80; $P < 0.001$), and white blood cell count $> 15 \times 10^9/L$ (OR_{adj} : 1.74;
177 95% CI: 1.24–2.44; $P = 0.001$).

178 Figure 1 illustrates the proportion of patients in the overall cohort who experienced
179 recurrence or the composite outcome of recurrence or 30-day mortality, given the
180 number of prognostic factors in the multivariable logistic regression model. At a score of
181 0 prognostic factors, the recurrence rate was 3.5% and the rate of recurrence or 30-day
182 mortality was 10.5%. At a score of 1, 2, or 3 prognostic factors, the recurrence rate
183 increased to 15.6%, 17.6%, and 19.7%, respectively. Similarly, at 1, 2, or 3 prognostic
184 factors, the rate of the composite outcome of recurrence or 30-day mortality increased
185 to 22.6%, 32.1%, and 51.3%, respectively.

186 **Non-severe CDI cohort**

187 There were 628 (85.2%) patients who were classified as having non-severe CDI, of
188 whom 499 (79.5%) and 129 (20.5%) were treated with initial metronidazole and initial
189 vancomycin, respectively. Among patients with first-episode non-severe CDI,
190 recurrence, new incident infection, and 30-day mortality rates were 15.1%, 7.7%, and
191 13.1%, respectively, when treated with initial metronidazole, compared to 16.9%, 4.2%,
192 and 11.4%, respectively, when treated with initial vancomycin. To evaluate the impact of
193 initial vancomycin treatment for first-episode non-severe CDI, the initial vancomycin and
194 initial metronidazole cohorts were first examined in a univariable logistic regression
195 analysis, followed by an adjusted multivariable analysis. The use of initial vancomycin
196 for treatment of first-episode non-severe CDI was associated with a reduction in new
197 incident infection (OR_{adj} : 0.18; 95% CI: 0.04–0.75; $P=0.019$) and the composite outcome
198 of new incident infection or 30-day mortality (OR_{adj} : 0.42; 95% CI: 0.22–0.79; $P=0.007$),
199 compared to initial metronidazole (Tables 3-4).

200 **Discussion**

201 Although clinical trials have shown vancomycin to be superior to metronidazole for the
202 treatment of severe CDI [10], previous studies have suggested that metronidazole and
203 vancomycin are equally effective for the treatment of non-severe CDI [9–12]. Coupled
204 with the higher cost of vancomycin and concerns associated with vancomycin-resistant
205 enterococci, metronidazole has been the drug of choice for the treatment of non-severe
206 CDI [14]. Given that some guidelines recommend the use of metronidazole for non-
207 severe CDI [6–8], Figure 1 illustrates a scoring rule based on prognostic factors in Table
208 2 which could help identify low-risk patient populations who are likely to do well on initial
209 metronidazole. In recent years, however, guidelines, such as those published by the
210 IDSA, have started to recommend initial vancomycin for the treatment of non-severe
211 CDI [5]. Our findings support this recommendation but are also consistent with the
212 conclusions of previous studies. The use of initial vancomycin for the treatment of non-
213 severe CDI, for instance, was not associated with recurrence or 30-day mortality alone,
214 which is consistent with previous findings [9–12]. A strength of our investigation was the

215 long duration of follow-up, 26 weeks in a pragmatic real-world setting, which allowed for
216 conclusions about the impact of initial vancomycin treatment on new incident infection,
217 defined as a CDI episode occurring more than 8 weeks after the initial infection. In an
218 adjusted analysis, the use of initial vancomycin for the treatment of first-episode non-
219 severe CDI was associated with a reduction in new incident infection and the composite
220 outcome of new incident infection or 30-day mortality.

221 The incidence of the virulent North American pulsed-field gel electrophoresis type 1
222 (NAP1) strain has decreased over a 7-year period in Canadian hospital settings [15].
223 Given that the NAP1 strain has been associated with higher mortality and a more
224 complicated course of disease, compared to non-NAP1 strains [15], it is possible that a
225 recent decline in NAP1 CDI cases could explain the reduction in the composite outcome
226 of new incident infection or 30-day mortality associated with the use of initial
227 vancomycin for the treatment of first-episode non-severe CDI. At our institution,
228 moreover, there has been an overall decline in new incident infection rates in recent
229 years, though it is unclear whether this should be attributed to the increased use of
230 initial vancomycin treatment or other factors. A possible explanation for the lower new
231 incident infection rate experienced by patients who received initial vancomycin could be
232 the broader spectrum antimicrobial activity of metronidazole which may be more
233 disruptive to gut flora and potentially predispose patients for new incident infection [2,
234 16, 17].

235 There were some limitations to our observational study. Patients were not randomized
236 to treatment groups, for instance, and could have differed on key prognostic factors that
237 may have influenced patient outcomes. To mitigate differences between groups, an
238 adjusted analysis was done using prognostic factors found for the overall cohort.
239 However, a limitation of our analysis was the exclusion of patient comorbidities in the
240 database which could have affected the progression of disease and all-cause mortality.
241 Another limitation was the possible misclassification of exposures, since the treatment
242 of CDI can evolve over a patient's stay. Patients were analyzed in a manner analogous
243 to the intention-to-treat approach, based on the initial treatment assignment, and any
244 treatment switches after 24 hours of the start of treatment were disregarded.
245 Furthermore, although there was no observed increase in instances of vancomycin-
246 resistant enterococci throughout our investigation, testing for this organism was non-
247 systematic in nature. Finally, our investigation could have included some patients
248 colonized with *Clostridioides difficile*, instead of true infection. This is unlikely, however,
249 as diagnosis of CDI was confirmed by one of three experienced infectious disease
250 physicians, all cases were followed by a dedicated CDI consultation team, and CDI
251 diagnosis required the presence of a positive toxin assay together with a clinical
252 presentation of 3 or more type 5–7 loose stools on the Bristol stool scale.

253 **Conclusions**

254 Initial vancomycin was associated with a reduction in new incident infection and the
255 composite outcome of new incident infection or 30-day mortality in the treatment of adult
256 inpatients with first-episode non-severe CDI, compared to initial metronidazole. These
257 findings support the use of initial vancomycin for all inpatients with CDI, as
258 recommended by IDSA guidelines [5].

259

260 **List of abbreviations**

261 CDI: *Clostridioides difficile* infection

262 IDSA: Infectious Diseases Society of America

263 HAI: Hospital-acquired infection

264 NAP1: North American pulsed-field gel electrophoresis type 1

265

266 **Declarations**

267 **Ethics approval and consent to participate**

268 This study was conducted in accordance with the Helsinki Declaration. The study
269 protocol was approved by the Hamilton Integrated Research Ethics Board (Project:
270 2018-3543). The Hamilton Integrated Research Ethics Board has categorized this
271 retrospective cohort study as minimal risk, defined as no potential for negative impact
272 on the health and safety of the participant, and waiver of consent for participation was
273 obtained.

274 **Consent for publication**

275 Not applicable.

276 **Availability of data and materials**

277 The datasets generated for the study are not publicly available due to the presence of
278 personally identifiable information. Aggregate data, however, are presented in the
279 manuscript within the Tables and the Figure and are available from the corresponding
280 author on reasonable request.

281 **Competing interests**

282 The authors declare that they have no competing interests.

283 **Funding**

284 The authors received no specific funding for this project.

285 **Authors' contributions**

286 Kevin Zhang and Marek Smieja contributed to the conception and design of the work.
287 Kevin Zhang, Patricia Beckett, Salaheddin Abouanaser, and Marek Smieja contributed
288 to the acquisition of data, analysis, and interpretation of results. All of the authors
289 drafted the manuscript, critically revised the paper, and approved the final manuscript.

290 **Acknowledgements**

291 Not applicable.

292

293

294

295

296

297

298

299

300

301

302

303

304

305 References

- 306 1. Magill SS, Edwards JR, Bamberg W, Beldavs ZG, Dumyati G, Kainer MA, et al.
307 Multistate Point-Prevalence Survey of Health Care–Associated Infections. *N Engl J*
308 *Med.* 2014;370:1198–208. doi:10.1056/NEJMoa1306801.
- 309 2. Hopkins RJ, Wilson RB. Treatment of recurrent *Clostridium difficile* colitis: a narrative
310 review. *Gastroenterology Report.* 2018;6:21–8. doi:10.1093/gastro/gox041.
- 311 3. Zhang K, Beckett P, Abouanaser S, Stankus V, Lee C, Smieja M. Prolonged oral
312 vancomycin for secondary prophylaxis of relapsing *Clostridium difficile* infection. *BMC*
313 *Infect Dis.* 2019;19:51. doi:10.1186/s12879-019-3676-1.
- 314 4. Lee CH, Steiner T, Petrof EO, Smieja M, Roscoe D, Nematallah A, et al. Frozen vs
315 Fresh Fecal Microbiota Transplantation and Clinical Resolution of Diarrhea in Patients
316 With Recurrent *Clostridium difficile* Infection: A Randomized Clinical Trial. *JAMA.*
317 2016;315:142. doi:10.1001/jama.2015.18098.
- 318 5. McDonald LC, Gerding DN, Johnson S, Bakken JS, Carroll KC, Coffin SE, et al.
319 Clinical Practice Guidelines for *Clostridium difficile* Infection in Adults and Children:
320 2017 Update by the Infectious Diseases Society of America (IDSA) and Society for
321 Healthcare Epidemiology of America (SHEA). *Clinical Infectious Diseases.* 2018;66:e1–
322 48. doi:10.1093/cid/cix1085.
- 323 6. Debast SB, Bauer MP, Kuijper EJ. European Society of Clinical Microbiology and
324 Infectious Diseases: Update of the Treatment Guidance Document for *Clostridium*
325 *difficile* Infection. *Clinical Microbiology and Infection.* 2014;20:1–26. doi:10.1111/1469-
326 0691.12418.
- 327 7. Sartelli M, Di Bella S, McFarland LV, Khanna S, Furuya-Kanamori L, Abuzeid N, et al.
328 2019 update of the WSES guidelines for management of *Clostridioides* (*Clostridium*)
329 *difficile* infection in surgical patients. *World J Emerg Surg.* 2019;14:8.
330 doi:10.1186/s13017-019-0228-3.
- 331 8. Trubiano JA, Cheng AC, Korman TM, Roder C, Campbell A, May MLA, et al.
332 Australasian Society of Infectious Diseases updated guidelines for the management of
333 *Clostridium difficile* infection in adults and children in Australia and New Zealand: CDI
334 management guidelines. *Intern Med J.* 2016;46:479–93. doi:10.1111/imj.13027.
- 335 9. Zar FA, Bakkanagari SR, Moorthi KMLST, Davis MB. A Comparison of Vancomycin
336 and Metronidazole for the Treatment of *Clostridium difficile*-Associated Diarrhea,
337 Stratified by Disease Severity. *Clinical Infectious Diseases.* 2007;45:302–7.
338 doi:10.1086/519265.
- 339 10. Johnson S, Louie TJ, Gerding DN, Cornely OA, Chasan-Taber S, Fitts D, et al.
340 Vancomycin, Metronidazole, or Tolevamer for *Clostridium difficile* Infection: Results

- 341 From Two Multinational, Randomized, Controlled Trials. *Clinical Infectious Diseases*.
342 2014;59:345–54. doi:10.1093/cid/ciu313.
- 343 11. Stevens VW, Nelson RE, Schwab-Daugherty EM, Khader K, Jones MM, Brown KA,
344 et al. Comparative Effectiveness of Vancomycin and Metronidazole for the Prevention of
345 Recurrence and Death in Patients With *Clostridium difficile* Infection. *JAMA Intern Med*.
346 2017;177:546. doi:10.1001/jamainternmed.2016.9045.
- 347 12. Le F, Arora V, Shah DN, Salazar M, Palmer HR, Garey KW. A Real-World
348 Evaluation of Oral Vancomycin for Severe *Clostridium difficile* Infection: Implications for
349 Antibiotic Stewardship Programs. *Pharmacotherapy*. 2012;32:129–34.
350 doi:10.1002/PHAR.1002.
- 351 13. Xia Y, Tunis M, Frenette C, Katz K, Amaratunga K, Rhodenizer Rose S, et al.
352 Epidemiology of *Clostridioides difficile* infection in Canada: A six-year review to support
353 vaccine decision-making. *CCDR*. 2019;45:191–211. doi:10.14745/ccdr.v45i78a04.
- 354 14. Arias CA, Murray BE. The rise of the Enterococcus: beyond vancomycin resistance.
355 *Nat Rev Microbiol*. 2012;10:266–78. doi:10.1038/nrmicro2761.
- 356 15. Katz KC, Golding GR, Choi KB, Pelude L, Amaratunga KR, Taljaard M, et al. The
357 evolving epidemiology of *Clostridium difficile* infection in Canadian hospitals during a
358 postepidemic period (2009–2015). *CMAJ*. 2018;190:E758–65.
359 doi:10.1503/cmaj.180013.
- 360 16. Rea MC, Dobson A, O’Sullivan O, Crispie F, Fouhy F, Cotter PD, et al. Effect of
361 broad- and narrow-spectrum antimicrobials on *Clostridium difficile* and microbial
362 diversity in a model of the distal colon. *Proceedings of the National Academy of*
363 *Sciences*. 2011;108 Supplement_1:4639–44. doi:10.1073/pnas.1001224107.
- 364 17. Jakobsson HE, Jernberg C, Andersson AF, Sjölund-Karlsson M, Jansson JK,
365 Engstrand L. Short-Term Antibiotic Treatment Has Differing Long-Term Impacts on the
366 Human Throat and Gut Microbiome. *PLoS ONE*. 2010;5:e9836.
367 doi:10.1371/journal.pone.0009836.
- 368
- 369
- 370
- 371
- 372
- 373
- 374

375 **Figures, tables, additional files**

376

377 **Table 1.** Description of patients with *Clostridioides difficile* infection (n = 737)

Demographics	
Age, median (Q1, Q3)	72.3 years (61.2, 83.3)
Male	336 (45.6%)
Hospital-acquired infection	357 (48.4%)
Medical	496 (67.3%)
Surgical	156 (21.2%)
Nephrology	83 (11.3%)
Non-severe <i>Clostridioides difficile</i> infection	628 (85.2%)
Clinical Data	
Temperature, mean (SD)	37.1°C (SD: 0.8)
Albumin, mean (SD)	23.1 g/L (SD: 6.2)
Creatinine, median (Q1, Q3)	94.0 µmol/L (65.0, 185.8)
White blood cell count, median (Q1, Q3)	12.3 × 10 ⁹ /L (8.7, 18.1)
Initial Treatment Excluding Switches	
Metronidazole	539 (73.1%)
Vancomycin	130 (17.6%)
Metronidazole and vancomycin	62 (8.4%)
Time to treatment, median (Q1, Q3)	2 days (1, 5)
Outcomes	
Recurrence	114 (15.5%)
New incident infection	51 (6.9%)
30-day mortality	94 (12.8%)
Time to recurrence, median (Q1, Q3)	29 days (24, 39)
Isolation days, median (Q1, Q3)	17 days (7, 34)

378 Sums may not add up to total due to missing data. Percentages exclude missing data.

379

380

381

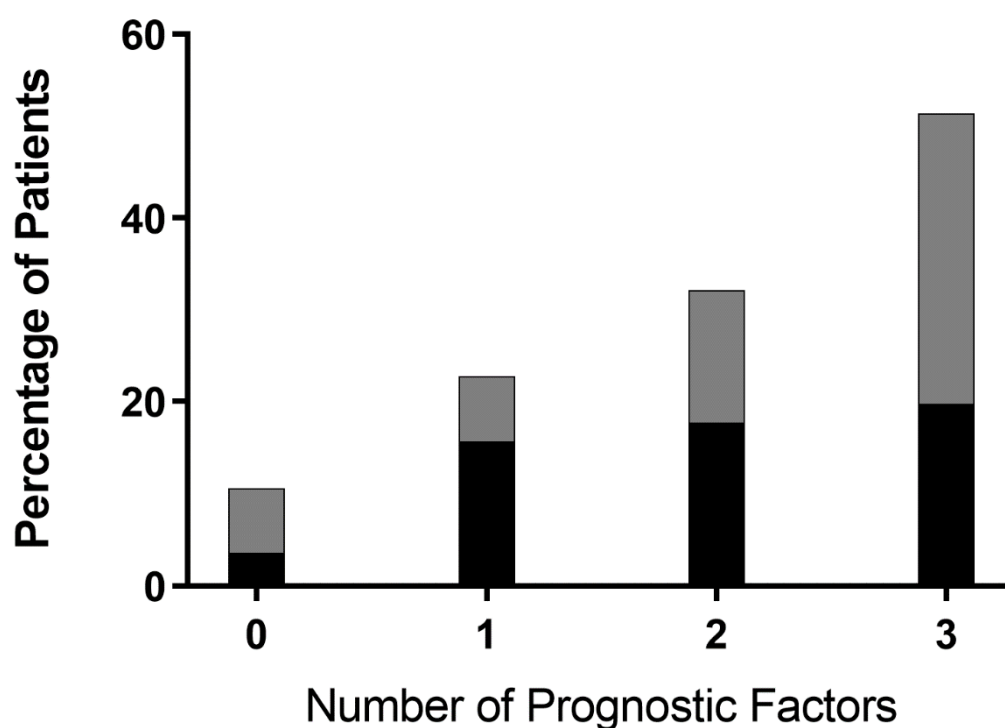
382

383 **Table 2.** Multivariable predictors of the composite outcome of recurrence or 30-day
384 mortality for patients in the overall cohort with *Clostridioides difficile* infection

Variable	Odds Ratio (95% CI)	P
Age ≥ 65 years	2.01 (1.38 – 2.94)	<0.001
Hospital-acquired infection	2.00 (1.44 – 2.80)	<0.001
White blood cell count >15 $\times 10^9$ /L	1.74 (1.24 – 2.44)	0.001

385

386



387

388 **Figure 1.** Proportion of patients in the overall cohort who experienced recurrence or the
389 composite outcome of recurrence or 30-day mortality given the number of prognostic
390 factors

391 **Legend**

392  Recurrence or 30-day mortality

393  Recurrence

394

395 **Table 3.** Predictors of new incident infection for patients with non-severe *Clostridioides*
396 *difficile* infection

Variable	Univariable		Multivariable	
	Odds Ratio (95% CI)	P	Odds Ratio (95% CI)	P
Initial vancomycin	0.18 (0.04 – 0.76)	0.019	0.18 (0.04 – 0.75)	0.019
Age ≥65 years			0.63 (0.33 – 1.21)	0.169
Hospital-acquired infection			1.07 (0.57 – 2.01)	0.843
White blood cell count >15×10 ⁹ /L			0.86 (0.40 – 1.85)	0.702

397

398

399 **Table 4.** Predictors of the composite outcome of new incident infection or 30-day
400 mortality for patients with non-severe *Clostridioides difficile* infection

Variable	Univariable		Multivariable	
	Odds Ratio (95% CI)	P	Odds Ratio (95% CI)	P
Initial vancomycin	0.43 (0.23 – 0.80)	0.008	0.42 (0.22 – 0.79)	0.007
Age ≥65 years			1.16 (0.73 – 1.84)	0.524
Hospital-acquired infection			1.31 (0.86 – 1.99)	0.208
White blood cell count >15×10 ⁹ /L			1.40 (0.88 – 2.23)	0.155

401