

1 **Initial vancomycin versus metronidazole for the treatment of**  
2 **first-episode non-severe *Clostridioides difficile* infection**

3  
4 **Kevin Zhang MD(c),<sup>1,\*</sup> Patricia Beckett RN,<sup>2</sup> Salaheddin Abouanaser MD,<sup>2</sup> Marek**  
5 **Smieja MD, PhD<sup>2,3</sup>**

6  
7 <sup>1</sup> Faculty of Medicine, University of Toronto, Toronto, Ontario, M5S 1A8, Canada

8 <sup>2</sup> St. Joseph's Healthcare Hamilton, Hamilton, Ontario, L8N 4A6, Canada

9 <sup>3</sup> Department of Pathology and Molecular Medicine, McMaster University, Hamilton,  
10 Ontario, L8S 4L8, Canada

11

12 **\*Corresponding author:** [kevink.zhang@mail.utoronto.ca](mailto:kevink.zhang@mail.utoronto.ca)

13

14 **Email Addresses**

15 KZ: [kevink.zhang@mail.utoronto.ca](mailto:kevink.zhang@mail.utoronto.ca)

16 PB: [pbeckett@stjosham.on.ca](mailto:pbeckett@stjosham.on.ca)

17 SA: [salaheddin.abouanaser@medportal.ca](mailto:salaheddin.abouanaser@medportal.ca)

18 MS: [smiejam@mcmaster.ca](mailto:smiejam@mcmaster.ca)

19

20 **Correspondence**

21 Kevin Zhang

22 Faculty of Medicine, University of Toronto

23 1 King's College Circle

24 Toronto, ON M5S 1A8

25 [kevink.zhang@mail.utoronto.ca](mailto:kevink.zhang@mail.utoronto.ca), (+1)416-978-6585

26

27 **Keywords:** *Clostridioides difficile*; *Clostridium difficile*; vancomycin; metronidazole;  
28 recurrence; incidence; mortality

29

30

31

32 **Abstract**

33 **Background:** *Clostridioides difficile* infection (CDI) is an important cause of nosocomial  
34 diarrhea. Given the discrepancy in current treatment guidelines for mild CDI, we sought  
35 to evaluate the use of initial vancomycin versus metronidazole for the treatment of first-  
36 episode non-severe infection.

37 **Methods:** We conducted a retrospective cohort study of all adult inpatients with first-  
38 episode CDI at our institution from January 2013 to May 2018. CDI was defined as a  
39 positive *Clostridioides difficile* loop-mediated isothermal amplification assay, in  
40 conjunction with  $\geq 3$  type 5–7 stools on the Bristol stool scale. To evaluate the impact of  
41 initial vancomycin treatment on adverse clinical outcomes in patients with first-episode  
42 non-severe CDI, the initial vancomycin versus initial metronidazole cohorts were first  
43 examined in an unadjusted logistic regression analysis for any combination of  
44 recurrence, incident infection, and all-cause 30-day mortality, followed by an adjusted  
45 multivariable analysis.

46 **Results:** A total of 737 cases were included. Patients had a median age of 72.3 years  
47 (Q1: 61.2, Q3: 83.3) and 628 (85.2%) were classified as non-severe CDI. Among  
48 patients with non-severe CDI ( $n = 628$ ), recurrence, incident infection, and 30-day  
49 mortality rates were 15.1%, 7.7%, and 13.1%, respectively, when treated with initial  
50 metronidazole, compared to 16.9%, 4.2%, and 11.4%, respectively, when treated with  
51 initial vancomycin. In an adjusted multivariable analysis, the use of initial vancomycin for  
52 the treatment of non-severe CDI was associated with a reduction in incident infection  
53 ( $OR_{adj}$ : 0.18; 95% CI: 0.04–0.75;  $P=0.019$ ) and the composite outcome of incident  
54 infection or 30-day mortality ( $OR_{adj}$ : 0.42; 95% CI: 0.22–0.79;  $P=0.007$ ), compared to  
55 initial metronidazole.

56 **Conclusions:** Initial vancomycin was associated with a reduced rate of incident  
57 infection and the composite outcome of incident infection or all-cause 30-day mortality  
58 in the treatment of adult inpatients with first-episode non-severe CDI, compared to initial  
59 metronidazole. Our findings support the use of initial vancomycin for all inpatients with  
60 CDI, irrespective of disease severity, as recommended by Infectious Diseases Society  
61 of America guidelines.

62

63 **Keywords:** *Clostridioides difficile*; *Clostridium difficile*; vancomycin; metronidazole;  
64 recurrence; incidence; mortality

65

66

## 67 **Background**

68 *Clostridioides difficile* infection (CDI) manifests itself in patients with an altered gut  
69 microbiota, and is commonly caused by exposure to antibiotics [1]. As the leading cause  
70 of nosocomial diarrhea, CDI continues to be a major burden within healthcare  
71 institutions and in the community [1]. Patients with CDI suffer from copious amounts of  
72 uncontrolled diarrhea, leading to a higher risk of life-threatening colitis and a lower  
73 quality of life. Despite undergoing lengthy courses of antimicrobial therapy, however,  
74 recurrence is common, with approximately 20% of patients experiencing debilitating  
75 episodes of repeated disease [2]. Recurrent CDI is associated with a greater risk for  
76 future recurrence and severe complications such as hypotension, perforation, and toxic  
77 megacolon [2]. Therefore, early interventions aimed at preventing recurrent CDI and  
78 reinfection are needed to improve outcomes, decrease the number of patient days  
79 spent in isolation, and improve quality of life.

80 St. Joseph's Healthcare Hamilton is a multi-site teaching hospital located in Hamilton,  
81 Ontario, Canada with a dedicated *Clostridioides difficile* consultation service for  
82 inpatients and referred outpatients. While the consultation team may offer fecal  
83 microbiota transplantation to patients with multiple CDI episodes or refractory disease  
84 [3, 4], clinical interventions for first-episode CDI primarily involve the use of antibiotics.  
85 In the past, metronidazole was indicated for non-severe CDI at our institution, while  
86 vancomycin was reserved for febrile patients with elevated white counts or for recurrent  
87 episodes. In recent years, however, there has been a shift to initial vancomycin to treat  
88 first-episode non-severe CDI at our institution, which is consistent with recent guidelines  
89 published by the Infectious Diseases Society of America (IDSA) [5]. Importantly,  
90 guidelines published by the European Society of Clinical Microbiology and Infectious  
91 Diseases, the World Society of Emergency Surgery, and the Australasian Society of  
92 Infectious Diseases still recommend the use of metronidazole for the first episode of  
93 non-severe disease [6–8].

94 Although initial vancomycin treatment is recommended by most guidelines to treat  
95 severe CDI, there exists a discrepancy in treatment recommendations for first-episode  
96 non-severe CDI [5–8]. There have been limited studies with long-term follow-up  
97 evaluating the use of initial vancomycin compared to initial metronidazole to treat non-  
98 severe inpatient CDI. In two large randomized controlled trials with follow-up of 3 weeks  
99 and 4 weeks, respectively, subgroup analyses stratified by severity did not demonstrate  
100 significant differences in relapse rates between the vancomycin and metronidazole  
101 treatment groups for non-severe CDI [9, 10]. Similarly, two cohort studies reported that  
102 relapse rates and 30-day mortality did not differ among patients with mild-to-moderate  
103 CDI treated with metronidazole or vancomycin [11, 12]. Therefore, we sought to identify  
104 predictors of adverse clinical outcomes and evaluate the use of initial vancomycin

105 versus metronidazole for the treatment of first-episode non-severe CDI among adult  
106 inpatients.

## 107 **Methods**

108 We conducted a retrospective cohort study of all adult inpatients with first-episode CDI  
109 at our institution from January 1, 2013 to May 31, 2018. Patients were identified from  
110 hospital infection control registries maintained by Infection Prevention and Control, and  
111 all entries were validated against data reported to the Ontario Ministry of Health and  
112 Long-Term Care. A CDI episode was characterized clinically as 3 or more type 5–7  
113 diarrheal stools on the Bristol stool scale, together with a positive *Clostridioides difficile*  
114 toxin gene loop-mediated isothermal amplification assay, in accordance with IDSA  
115 guidelines [5]. Patients with a prior history of CDI were excluded from the study.  
116 Similarly, colonized patients who had a positive toxin assay but did not meet the clinical  
117 criteria of 3 or more type 5–7 loose stools were excluded. Data abstracted included:  
118 demographics, specimen collection date, date of symptom onset, source of acquisition,  
119 unit in which CDI was first diagnosed (medical, surgical, or nephrology), clinical  
120 indicators at the time of diagnosis, CDI treatment, number of isolation days, and  
121 outcomes including: recurrence, incident infection, and death. Time to treatment and  
122 time to recurrence were measured from the start of the initial CDI diagnosis. Hospital-  
123 acquired infection (HAI) was defined as CDI present >72 hours after admission or  
124 infection present on admission, whereas non-HAI was defined as CDI present ≤72  
125 hours after admission [13].

126 The primary exposures in this study were the treatment of first-episode non-severe CDI  
127 with initial vancomycin or metronidazole. The outcomes of interest were recurrence,  
128 incident infection, and all-cause 30-day mortality. All patients were followed for 26  
129 weeks from the date of their initial CDI diagnosis. Recurrence was defined as a CDI  
130 case occurring after an episode with positive assay result in the previous 2–8 weeks,  
131 while incident infection was defined as a CDI case occurring after more than 8 weeks  
132 [5]. All-cause 30-day mortality was defined as death for any reason within 30 days of  
133 CDI diagnosis. CDI severity was defined according to guidelines published by the  
134 European Society of Clinical Microbiology and Infectious Diseases [6]. A patient with  
135 any one of: white blood cell count  $>15 \times 10^9/L$ , albumin level  $<30g/L$ , or serum creatinine  
136 level  $\geq 133\mu M$  was considered to have severe CDI [6].

## 137 **Statistical Analysis**

138 Logistic regression was used to determine prognostic factors for the composite outcome  
139 of recurrence or all-cause 30-day mortality for the overall cohort. Recurrence was  
140 selected as a patient-important outcome, as it is associated with a greater risk for  
141 complications and adverse outcomes [2]. All-cause 30-day mortality was included in the

142 composite outcome as it is a potential competing event for recurrence. All factors were  
143 determined a priori based on published guidelines [5–8]. Univariable analysis with  $P < 0.2$   
144 was used, followed by stepwise selection in a multivariable logistic regression model.  
145 The number of variables entered into the model enabled 80% study power with 15  
146 events per factor.

147 To evaluate the impact of initial vancomycin treatment on adverse clinical outcomes in  
148 patients with first-episode non-severe CDI, the initial vancomycin versus initial  
149 metronidazole cohorts were first examined in an unadjusted logistic regression analysis  
150 for any combination of recurrence, incident infection, and all-cause 30-day mortality.  
151 Prognostic factors for the overall cohort were then added to the adjusted multivariable  
152 analysis.

## 153 **Results**

154 A total of 737 inpatients with first-episode CDI were included in our study. Their  
155 demographics, clinical data at the time of CDI diagnosis, initial CDI treatment, and  
156 outcomes are summarized in Table 1. Patients had a median age of 72.3 years (Q1:  
157 61.2, Q3: 83.3) and 628 (85.2%) were classified to have non-severe CDI. 357 (48.4%)  
158 patients were classified to have hospital-acquired infection, while 309 (41.9%) and 71  
159 (9.6%) were classified to have acquired CDI in the community and other institutions,  
160 respectively. Most patients, 496 (67.3%), were initially diagnosed with CDI in a medical  
161 setting. At the time of CDI diagnosis, patients had an average temperature of 37.1°C  
162 (SD: 0.8) and a median white blood cell count of  $12.3 \times 10^9/L$  (Q1: 8.7, Q3: 18.1). The  
163 median time to treatment following CDI diagnosis was 2 days (Q1: 1, Q3: 5). Most  
164 patients, 539 (73.1%), received initial metronidazole treatment, while 130 (17.6%)  
165 received initial vancomycin. Patients experienced a recurrence rate of 15.5%, an  
166 incident infection rate of 6.9%, and a 30-day mortality rate of 12.8%. The median time to  
167 recurrence was 29 days (Q1: 24, Q3: 36) and the median length of time spent in  
168 isolation was 17 days (Q1: 7, Q3: 34).

### 169 **Overall cohort**

170 The results of the multivariable logistic regression model to determine prognostic factors  
171 for the composite outcome of recurrence or all-cause 30-day mortality for the overall  
172 cohort are summarized in Table 2. Predictors of the composite outcome were: age  $\geq 65$   
173 years ( $OR_{adj}$ : 2.01; 95% CI: 1.38–2.94;  $P < 0.001$ ), hospital-acquired infection ( $OR_{adj}$ :  
174 2.00; 95% CI: 1.44–2.80;  $P < 0.001$ ), and white blood cell count  $> 15 \times 10^9/L$  ( $OR_{adj}$ : 1.74;  
175 95% CI: 1.24–2.44;  $P = 0.001$ ).

176 Figure 1 illustrates the proportion of patients in the overall cohort who experienced  
177 recurrence or the composite outcome of recurrence or 30-day mortality, given the

178 number of prognostic factors in the multivariable logistic regression model. At a score of  
179 0 prognostic factors, the recurrence rate was 3.5% and the rate of recurrence or 30-day  
180 mortality was 10.5%. At a score of 1, 2, or 3 prognostic factors, the recurrence rate  
181 increased to 15.6%, 17.6%, and 19.7%, respectively. Similarly, at 1, 2, or 3 prognostic  
182 factors, the rate of the composite outcome of recurrence or 30-day mortality increased  
183 to 22.6%, 32.1%, and 51.3%, respectively.

#### 184 **Non-severe CDI cohort**

185 There were 628 (85.2%) patients who were classified as having non-severe CDI, of  
186 whom 499 (79.5%) and 129 (20.5%) were treated with initial metronidazole and initial  
187 vancomycin, respectively. Among patients with first-episode non-severe CDI,  
188 recurrence, incident infection, and 30-day mortality rates were 15.1%, 7.7%, and 13.1%,  
189 respectively, when treated with initial metronidazole, compared to 16.9%, 4.2%, and  
190 11.4%, respectively, when treated with initial vancomycin. To evaluate the impact of  
191 initial vancomycin treatment for first-episode non-severe CDI, the initial vancomycin and  
192 initial metronidazole cohorts were first examined in a univariable logistic regression  
193 analysis, followed by an adjusted multivariable analysis. The use of initial vancomycin  
194 for treatment of first-episode non-severe CDI was associated with a reduction in incident  
195 infection ( $OR_{adj}$ : 0.18; 95% CI: 0.04–0.75;  $P=0.019$ ) and the composite outcome of  
196 incident infection or 30-day mortality ( $OR_{adj}$ : 0.42; 95% CI: 0.22–0.79;  $P=0.007$ ),  
197 compared to initial metronidazole (Tables 3-4).

#### 198 **Discussion**

199 Although clinical trials have shown vancomycin to be superior to metronidazole for the  
200 treatment of severe CDI [10], previous studies have suggested that metronidazole and  
201 vancomycin are equally effective for the treatment of non-severe CDI [9–12]. Coupled  
202 with the higher cost of vancomycin and concerns associated with vancomycin-resistant  
203 enterococci, metronidazole has been the drug of choice for the treatment of non-severe  
204 CDI [14]. Given that some guidelines recommend the use of metronidazole for non-  
205 severe CDI [6–8], Figure 1 illustrates a scoring rule based on prognostic factors in Table  
206 2 which could help identify low-risk patient populations who are likely to do well on initial  
207 metronidazole. In recent years, however, guidelines, such as those published by the  
208 IDSA, have started to recommend initial vancomycin for the treatment of non-severe  
209 CDI [5]. Our findings support this recommendation but are also consistent with the  
210 conclusions of previous studies. The use of initial vancomycin for the treatment of non-  
211 severe CDI, for instance, was not associated with recurrence or 30-day mortality alone,  
212 which is consistent with previous findings [9–12]. A strength of our investigation was the  
213 long duration of follow-up, 26 weeks in a pragmatic real-world setting, which allowed for  
214 conclusions about the impact of initial vancomycin treatment on incident infection,

215 defined as a CDI episode occurring more than 8 weeks after the initial infection. In an  
216 adjusted analysis, the use of initial vancomycin for the treatment of first-episode non-  
217 severe CDI was associated with a reduction in incident infection and the composite  
218 outcome of incident infection or 30-day mortality.

219 The incidence of the virulent North American pulsed-field gel electrophoresis type 1  
220 (NAP1) strain has decreased over a 7-year period in Canadian hospital settings [15].  
221 Given that the NAP1 strain has been associated with higher mortality and a more  
222 complicated course of disease, compared to non-NAP1 strains [15], it is possible that a  
223 recent decline in NAP1 CDI cases could explain the reduction in the composite outcome  
224 of incident infection or 30-day mortality associated with the use of initial vancomycin for  
225 the treatment of first-episode non-severe CDI. At our institution, moreover, there has  
226 been an overall decline in incident infection rates in recent years, though it is unclear  
227 whether this should be attributed to the increased use of initial vancomycin treatment or  
228 other factors. A possible explanation for the lower incident infection rate experienced by  
229 patients who received initial vancomycin could be the broader spectrum antimicrobial  
230 activity of metronidazole which may be more disruptive to gut flora and potentially  
231 predispose patients for reinfection and incident infection [2, 16, 17].

232 There were some limitations to our observational study. Patients were not randomized  
233 to treatment groups, for instance, and could have differed on key prognostic factors that  
234 may have influenced patient outcomes. To mitigate differences between groups, an  
235 adjusted analysis was done using prognostic factors found for the overall cohort.  
236 However, a limitation of our analysis was the exclusion of patient comorbidities in the  
237 database. Another limitation was the possible misclassification of exposures, since the  
238 treatment of CDI can evolve over a patient's stay. Patients were analyzed in a manner  
239 analogous to the intention-to-treat approach, based on the initial treatment assignment,  
240 and any treatment switches after 24 hours of the start of treatment were disregarded.  
241 Furthermore, although there was no observed increase in instances of vancomycin-  
242 resistant enterococci throughout our investigation, testing for this organism was non-  
243 systematic in nature. Finally, our investigation could have included some patients  
244 colonized with *Clostridioides difficile*, instead of true infection. This is unlikely, however,  
245 as diagnosis of CDI was confirmed by one of three experienced infectious disease  
246 physicians, all cases were followed by a dedicated CDI consultation team, and CDI  
247 diagnosis required the presence of a positive toxin assay together with a clinical  
248 presentation of 3 or more type 5–7 loose stools on the Bristol stool scale.

## 249 **Conclusions**

250 Initial vancomycin was associated with a reduction in incident infection and the  
251 composite outcome of incident infection or 30-day mortality in the treatment of adult

252 inpatients with first-episode non-severe CDI, compared to initial metronidazole. These  
253 findings support the use of initial vancomycin for all inpatients with CDI, as  
254 recommended by IDSA guidelines [5].

255

## 256 **List of abbreviations**

257 CDI: *Clostridioides difficile* infection

258 IDSA: Infectious Diseases Society of America

259 HAI: Hospital-acquired infection

260 NAP1: North American pulsed-field gel electrophoresis type 1

261

## 262 **Declarations**

### 263 **Ethics approval and consent to participate**

264 This study was conducted in accordance with the Helsinki Declaration. The study  
265 protocol was approved by the Hamilton Integrated Research Ethics Board (Project:  
266 2018-3543). The Hamilton Integrated Research Ethics Board has categorized this  
267 retrospective cohort study as minimal risk, defined as no potential for negative impact  
268 on the health and safety of the participant, and waiver of consent for participation was  
269 obtained.

### 270 **Consent for publication**

271 Not applicable.

### 272 **Availability of data and materials**

273 The datasets generated for the study are not publicly available due to the presence of  
274 personally identifiable information. Aggregate data, however, are presented in the  
275 manuscript within the Tables and the Figure and are available from the corresponding  
276 author on reasonable request.

### 277 **Competing interests**

278 The authors declare that they have no competing interests.

### 279 **Funding**



280 The authors received no specific funding for this project.

281 **Authors' contributions**

282 Kevin Zhang and Marek Smieja contributed to the conception and design of the work.  
283 Kevin Zhang, Patricia Beckett, Salaheddin Abouanaser, and Marek Smieja contributed  
284 to the acquisition of data, analysis, and interpretation of results. All of the authors  
285 drafted the manuscript, critically revised the paper, and approved the final manuscript.

286 **Acknowledgements**

287 Not applicable.

288

289

290

291

292

293

294

295

296

297

298

299

300

301

302

## 303 References

- 304 1. Magill SS, Edwards JR, Bamberg W, Beldavs ZG, Dumyati G, Kainer MA, et al.  
305 Multistate Point-Prevalence Survey of Health Care–Associated Infections. *N Engl J*  
306 *Med*. 2014;370:1198–208. doi:10.1056/NEJMoa1306801.
- 307 2. Hopkins RJ, Wilson RB. Treatment of recurrent *Clostridium difficile* colitis: a narrative  
308 review. *Gastroenterology Report*. 2018;6:21–8. doi:10.1093/gastro/gox041.
- 309 3. Zhang K, Beckett P, Abouanaser S, Stankus V, Lee C, Smieja M. Prolonged oral  
310 vancomycin for secondary prophylaxis of relapsing *Clostridium difficile* infection. *BMC*  
311 *Infect Dis*. 2019;19:51. doi:10.1186/s12879-019-3676-1.
- 312 4. Lee CH, Steiner T, Petrof EO, Smieja M, Roscoe D, Nematallah A, et al. Frozen vs  
313 Fresh Fecal Microbiota Transplantation and Clinical Resolution of Diarrhea in Patients  
314 With Recurrent *Clostridium difficile* Infection: A Randomized Clinical Trial. *JAMA*.  
315 2016;315:142. doi:10.1001/jama.2015.18098.
- 316 5. McDonald LC, Gerding DN, Johnson S, Bakken JS, Carroll KC, Coffin SE, et al.  
317 Clinical Practice Guidelines for *Clostridium difficile* Infection in Adults and Children:  
318 2017 Update by the Infectious Diseases Society of America (IDSA) and Society for  
319 Healthcare Epidemiology of America (SHEA). *Clinical Infectious Diseases*. 2018;66:e1–  
320 48. doi:10.1093/cid/cix1085.
- 321 6. Debast SB, Bauer MP, Kuijper EJ. European Society of Clinical Microbiology and  
322 Infectious Diseases: Update of the Treatment Guidance Document for *Clostridium*  
323 *difficile* Infection. *Clinical Microbiology and Infection*. 2014;20:1–26. doi:10.1111/1469-  
324 0691.12418.
- 325 7. Sartelli M, Di Bella S, McFarland LV, Khanna S, Furuya-Kanamori L, Abuzeid N, et al.  
326 2019 update of the WSES guidelines for management of *Clostridioides* (*Clostridium*)  
327 *difficile* infection in surgical patients. *World J Emerg Surg*. 2019;14:8.  
328 doi:10.1186/s13017-019-0228-3.
- 329 8. Trubiano JA, Cheng AC, Korman TM, Roder C, Campbell A, May MLA, et al.  
330 Australasian Society of Infectious Diseases updated guidelines for the management of  
331 *Clostridium difficile* infection in adults and children in Australia and New Zealand: CDI  
332 management guidelines. *Intern Med J*. 2016;46:479–93. doi:10.1111/imj.13027.
- 333 9. Zar FA, Bakkanagari SR, Moorthi KMLST, Davis MB. A Comparison of Vancomycin  
334 and Metronidazole for the Treatment of *Clostridium difficile*-Associated Diarrhea,  
335 Stratified by Disease Severity. *Clinical Infectious Diseases*. 2007;45:302–7.  
336 doi:10.1086/519265.
- 337 10. Johnson S, Louie TJ, Gerding DN, Cornely OA, Chasan-Taber S, Fitts D, et al.  
338 Vancomycin, Metronidazole, or Tolevamer for *Clostridium difficile* Infection: Results

- 339 From Two Multinational, Randomized, Controlled Trials. *Clinical Infectious Diseases*.  
340 2014;59:345–54. doi:10.1093/cid/ciu313.
- 341 11. Stevens VW, Nelson RE, Schwab-Daugherty EM, Khader K, Jones MM, Brown KA,  
342 et al. Comparative Effectiveness of Vancomycin and Metronidazole for the Prevention of  
343 Recurrence and Death in Patients With *Clostridium difficile* Infection. *JAMA Intern Med*.  
344 2017;177:546. doi:10.1001/jamainternmed.2016.9045.
- 345 12. Le F, Arora V, Shah DN, Salazar M, Palmer HR, Garey KW. A Real-World  
346 Evaluation of Oral Vancomycin for Severe *Clostridium difficile* Infection: Implications for  
347 Antibiotic Stewardship Programs. *Pharmacotherapy*. 2012;32:129–34.  
348 doi:10.1002/PHAR.1002.
- 349 13. Xia Y, Tunis M, Frenette C, Katz K, Amaratunga K, Rhodenizer Rose S, et al.  
350 Epidemiology of *Clostridioides difficile* infection in Canada: A six-year review to support  
351 vaccine decision-making. *CCDR*. 2019;45:191–211. doi:10.14745/ccdr.v45i78a04.
- 352 14. Arias CA, Murray BE. The rise of the Enterococcus: beyond vancomycin resistance.  
353 *Nat Rev Microbiol*. 2012;10:266–78. doi:10.1038/nrmicro2761.
- 354 15. Katz KC, Golding GR, Choi KB, Pelude L, Amaratunga KR, Taljaard M, et al. The  
355 evolving epidemiology of *Clostridium difficile* infection in Canadian hospitals during a  
356 postepidemic period (2009–2015). *CMAJ*. 2018;190:E758–65.  
357 doi:10.1503/cmaj.180013.
- 358 16. Rea MC, Dobson A, O’Sullivan O, Crispie F, Fouhy F, Cotter PD, et al. Effect of  
359 broad- and narrow-spectrum antimicrobials on *Clostridium difficile* and microbial  
360 diversity in a model of the distal colon. *Proceedings of the National Academy of*  
361 *Sciences*. 2011;108 Supplement\_1:4639–44. doi:10.1073/pnas.1001224107.
- 362 17. Jakobsson HE, Jernberg C, Andersson AF, Sjölund-Karlsson M, Jansson JK,  
363 Engstrand L. Short-Term Antibiotic Treatment Has Differing Long-Term Impacts on the  
364 Human Throat and Gut Microbiome. *PLoS ONE*. 2010;5:e9836.  
365 doi:10.1371/journal.pone.0009836.
- 366
- 367
- 368
- 369
- 370
- 371
- 372

373 **Figures, tables, additional files**

374

375 **Table 1.** Description of patients with *Clostridioides difficile* infection (n = 737)

<b>Demographics</b>	
Age, median (Q1, Q3)	72.3 years (61.2, 83.3)
Male	336 (45.6%)
Hospital-acquired infection	357 (48.4%)
Medical	496 (67.3%)
Surgical	156 (21.2%)
Nephrology	83 (11.3%)
Non-severe <i>Clostridioides difficile</i> infection	628 (85.2%)
<b>Clinical Data</b>	
Temperature, mean (SD)	37.1°C (SD: 0.8)
Albumin, mean (SD)	23.1 g/L (SD: 6.2)
Creatinine, median (Q1, Q3)	94.0 µmol/L (65.0, 185.8)
White blood cell count, median (Q1, Q3)	12.3 × 10 <sup>9</sup> /L (8.7, 18.1)
<b>Initial Treatment Excluding Switches</b>	
Metronidazole	539 (73.1%)
Vancomycin	130 (17.6%)
Metronidazole and vancomycin	62 (8.4%)
Time to treatment, median (Q1, Q3)	2 days (1, 5)
<b>Outcomes</b>	
Recurrence	114 (15.5%)
Incident infection	51 (6.9%)
30-day mortality	94 (12.8%)
Time to recurrence, median (Q1, Q3)	29 days (24, 36)
Isolation days, median (Q1, Q3)	17 days (7, 34)

376 Sums may not add up to total due to missing data. Percentages exclude missing data.

377

378

379

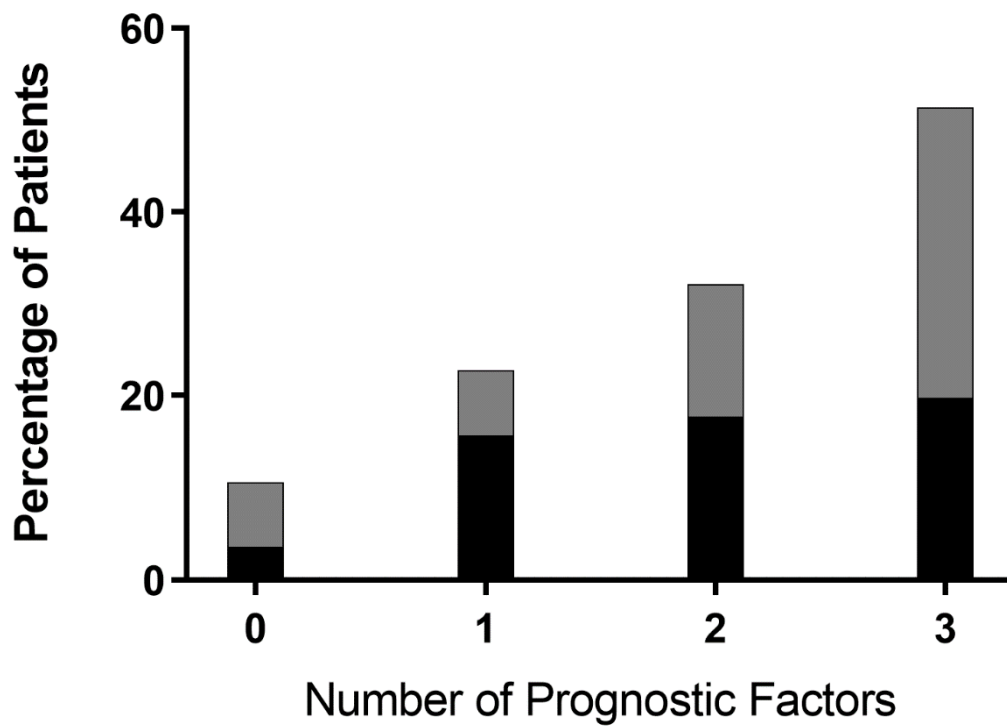
380

381 **Table 2.** Multivariable predictors of the composite outcome of recurrence or 30-day  
382 mortality for patients in the overall cohort with *Clostridioides difficile* infection

Variable	Odds Ratio (95% CI)	P
Age $\geq 65$ years	2.01 (1.38 – 2.94)	<0.001
Hospital-acquired infection	2.00 (1.44 – 2.80)	<0.001
White blood cell count >15 $\times 10^9$ /L	1.74 (1.24 – 2.44)	0.001

383

384



385

386 **Figure 1.** Proportion of patients in the overall cohort who experienced recurrence or the  
387 composite outcome of recurrence or 30-day mortality given the number of prognostic  
388 factors

389 **Legend**

390  Recurrence or 30-day mortality

391  Recurrence

392

393 **Table 3.** Predictors of incident infection for patients with non-severe *Clostridioides*  
394 *difficile* infection

Variable	Univariable		Multivariable	
	Odds Ratio (95% CI)	P	Odds Ratio (95% CI)	P
Initial vancomycin	0.18 (0.04 – 0.76)	0.019	0.18 (0.04 – 0.75)	0.019
Age ≥65 years			0.63 (0.33 – 1.21)	0.169
Hospital-acquired infection			1.07 (0.57 – 2.01)	0.843
White blood cell count >15×10 <sup>9</sup> /L			0.86 (0.40 – 1.85)	0.702

395

396

397 **Table 4.** Predictors of incident infection or 30-day mortality for patients with non-severe  
398 *Clostridioides difficile* infection

Variable	Univariable		Multivariable	
	Odds Ratio (95% CI)	P	Odds Ratio (95% CI)	P
Initial vancomycin	0.43 (0.23 – 0.80)	0.008	0.42 (0.22 – 0.79)	0.007
Age ≥65 years			1.16 (0.73 – 1.84)	0.524
Hospital-acquired infection			1.31 (0.86 – 1.99)	0.208
White blood cell count >15×10 <sup>9</sup> /L			1.40 (0.88 – 2.23)	0.155

399