

1 **Impact of intra-partum Azithromycin on carriage of group A streptococcus in The Gambia: a**
2 **posthoc analysis of a double-blind randomized placebo-controlled trial**

3 Isatou Jagne¹

4 Email: ijcox@mrc.gm

5 Alexander J. Keeley³

6 Email: a.keeley@sheffield.ac.uk

7 Abdoulie Bojang¹

8 Email: ambojang@mrc.gm

9 Bully Camara¹

10 Email: bcamara@mrc.gm

11 Edrissa Jallow¹

12 Email: edjallow@mrc.gm

13 Elina Senghore¹

14 Email: esenghore@mrc.gm

15 Claire Oluwalana¹

16 Email: coluwalana@mrc.gm

17 Saikou Y. Bah^{1,3}

18 Email: s.bah@sheffield.ac.uk

19 Claire E. Turner³

20 Email: c.e.turner@sheffield.ac.uk

21 Abdul Karim Sesay¹

22 Email: aksesay@mrc.gm

23 Umberto D'Alessandro¹

24 Email: udalessandro@mrc.gm

25 Christian Bottomley²

26 Email: christian.bottomley@lshtm.ac.uk

27 Thushan I. de Silva^{1,3}

28 Email: t.desilva@sheffield.ac.uk

29 Anna Roca^{1*}

30 Email: aroca@mrc.gm

31

32 **Affiliations:**

33 ¹ Medical Research Council Unit the Gambia at the London School of Hygiene and Tropical
34 Medicine, Banjul, The Gambia

35 ² Faculty of Infectious and Tropical Diseases, London School of Hygiene & Tropical Medicine,
36 London, UK

37 ³ The Florey Institute, University of Sheffield, Sheffield, UK.

38

39 ***Corresponding Author:** Disease Control and Elimination Theme, MRC Unit The Gambia at
40 the LSHTM, The Gambia

41 **Short Title:** Intra-partum azithromycin impact on GAS

42 **Short Summary**

43 Group A streptococcus (GAS) is an important cause of sepsis. One oral dose (2g) of intra-partum
44 azithromycin reduced maternal and neonatal GAS carriage. However, azithromycin-resistant
45 *Streptococcus dysgalactiae* subspecies *equisimilis* expressing Lancefield group A carbohydrate
46 was detected in women receiving azithromycin.

47

48 **Abstract**

49 **Background:** Group A *Streptococcus* (GAS) is a major human pathogen and an important cause of
50 maternal and neonatal sepsis.

51 **Methods:** We performed a posthoc analysis of a double-blind, placebo-controlled randomized-trial (ratio
52 1:1) carried out in The Gambia to determine the impact of one oral dose (2g) of intra-partum
53 azithromycin on maternal and neonatal GAS carriage. Breast milk, nasopharyngeal and vaginal swabs
54 were collected at different time points during 4 weeks post-treatment. All samples were processed using
55 conventional microbiology techniques. Whole genome sequencing (WGS) of GAS isolates was
56 performed by Illumina MiSeq platform.

57 **Results:** We randomized 829 mothers who delivered 843 babies. GAS carriage in mothers in the
58 azithromycin arm was lower in breast milk (0.28% vs 2.48%, Prevalence Ratio (PR)=0.11, 95% CI 0.01-
59 0.90) and the nasopharynx (0.28% vs 1.93%, PR=0.15, 95% CI 0.02-1.19), but not in the vaginal tract
60 (1.99% vs 1.93%, PR=1.03, 95% CI 0.37-2.91). Among neonates, GAS carriage in the nasopharynx was
61 slightly lower in the azithromycin arm (0.57% vs 1.91%, PR=0.30, 95% CI 0.06-1.42). Prevalence of
62 azithromycin-resistant GAS was similar in both arms, except for a higher prevalence in the vaginal tract
63 among women in the azithromycin arm (1.99% vs 0.28%, PR=7.24, 95% CI 0.87-56.92). WGS revealed
64 ten of the 45 GAS isolates (22.2%) were *Streptococcus dysgalactiae* subspecies *equisimilis* expressing
65 Lancefield group A carbohydrate (SDSE(A)). All SDSE(A) isolates were azithromycin-resistant,
66 harbouring macrolide resistant genes *msrD* and *mefA*.

67 **Conclusions:** Oral intra-partum azithromycin reduced prevalence of GAS carriage among mothers and
68 neonates. Azithromycin-resistant SDSE(A) carriage was observed among participants treated with
69 azithromycin.

70 **Trial registration:** ClinicalTrials.gov Identifier NCT01800942

71 **Keywords:** Sub-Saharan Africa, azithromycin, bacterial carriage, group A *streptococcus*, *Streptococcus*
72 *dysgalactiae subspecies equisimilis*
73

74 **BACKGROUND**

75 Pregnant women and neonates are at highest risk of sepsis, up to 6 weeks after delivery, resulting in 6-
76 19% of maternal deaths [1, 2]. Low- and middle-income countries (LMICs) have the highest burden of
77 mortality due to maternal sepsis, with the highest rates in sub-Saharan Africa (SSA). Neonatal sepsis is a
78 significant cause of severe morbidity and is estimated to cause 7% of under-5 mortality [3, 4]. Globally,
79 *Staphylococcus aureus* and Group B *Streptococcus* (GBS) are main causes of maternal and neonatal
80 sepsis [5-7]. Group A *Streptococcus* (GAS; *Streptococcus pyogenes*) is increasingly recognized as an
81 important Gram-positive pathogen associated with maternal and neonatal sepsis [8-10]. GAS can cause
82 both early and late onset of neonatal sepsis [11, 12], usually as a result of infection acquired through the
83 birth canal [12].

84 Surveillance conducted in the USA between 1995 and 2000 estimated an annual incidence of 6 per
85 100,000 live births of GAS-related maternal sepsis, with a 3.5% case-fatality ratio in invasive disease
86 [13]. A review of pregnancy-related GAS infections between 1974 and 2009 included no data from SSA
87 [14]. Between 2010 and 2016, the incidence of GAS neonatal sepsis in London and the south of England
88 was 1.5 per 100,000 person years [15]. There is limited data on the burden of GAS infections in SSA due
89 to the lack of systematic surveillance [16]. In the Eastern Cape, South Africa, the mean annual incidence
90 rate of invasive GAS infection was 6 cases per 100,000-person years in all age groups (58% of samples
91 from 18-64 year olds) [17]. In Kenya, the incidence of neonatal GAS sepsis was 0.6 cases per 1,000 live
92 births [18]. GAS also causes non-invasive disease, including tonsillo-pharyngitis, skin infections and
93 rheumatic fever that can result in rheumatic heart disease [17, 19, 20].

94 We conducted a double-blind randomized trial (the PregnAnZI trial) to assess the effect of 2g of oral
95 intra-partum azithromycin in reducing bacterial carriage of the main Gram-positive pathogens associated
96 with neonatal sepsis (*S. aureus*, *Streptococcus pneumoniae* and GBS) in the mother and the newborn
97 during the 4 weeks following the intervention [21]. The trial showed a consistent reduction of bacterial

98 carriage of these three bacteria in both the mother and their newborns during the entire neonatal period
99 and a decrease in the occurrence of disease [22, 23]. We present here a posthoc analysis of the trial to
100 determine the effect of 2g intra-partum azithromycin on the prevalence and antibiotic resistance of GAS
101 in mothers and their newborns during the 4 weeks following the intervention. We also used whole
102 genome sequencing (WGS) to further characterise the GAS isolates and perform phylogenetic analysis.

103 **METHODS**

104 **Study Design/Population**

105 This study is a posthoc analysis of data from a double-blind, placebo-controlled randomized trial in which
106 women in labour were randomized to receive either a single dose of 2g of oral azithromycin or placebo
107 (ratio 1:1) [21]. The trial was conducted at the Jammeh Foundation for Peace (JFP), a government-run
108 health facility located in western Gambia that manages approximately 4,500 deliveries per year. The
109 population in the catchment area is representative of The Gambia and covers its main ethnic groups [22].
110 Between April 2013 and April 2014, women aged 18-45 years attending the JFP labour ward and with no
111 acute or chronic conditions were recruited into the trial. Details of exclusion criteria have been reported
112 elsewhere [21]. The women had provided written informed consent to participate in the study during
113 previous antenatal care visits. Women and their newborns were followed for up to 8 weeks postpartum
114 and biological samples were collected during the first 4 weeks [21, 22].

115 **Study Samples**

116 A nasopharyngeal swab (NPS) and a low vaginal swab (VS) were collected from women before the
117 intervention was administered and during labour. Post-intervention samples included: (i) newborn NPS
118 within 6 h after birth; (ii) samples collected during home visits at days 3, 6, 14 and 28 (NPS from mothers
119 and newborns, and breast milk(BM) from mothers) and (iii) a VS collected in the health facility during
120 the postnatal check at day 8-10 post-delivery [22].

121

122 **Sample collection**

123 NPS were collected by passing the tip of a calcium alginate (Expotech USA Inc) swab across the mucosa
124 of the posterior wall of the nasopharynx. The swab was rotated and left in the nasopharynx for
125 approximately 5 seconds. The inoculated swab was placed immediately into a vial containing skim milk-
126 tryptone-glucose-glycerol (STGG) transport medium and then into a cold box before being taken to the
127 Medical Research Council Unit The Gambia (MRC) at the London School of Hygiene and Tropical
128 Medicine (LSHTM) laboratories within 8 hours of collection [21].

129 VS were collected by inserting a sterile cotton swab (Sterilin Ltd, UK) 2–3 cm into the vagina and
130 rotating the swab with a circular motion, leaving it in the vagina for approximately 5 seconds. The
131 inoculated swabs were then placed immediately into the vials containing STGG and put in a cold box
132 before being transferred to the MRC laboratories within 8 hours [21].

133 Breast milk samples were collected by first disinfecting the nipple and areola of the breast using sterile
134 cotton soaked with 0.02 % chlorhexidine. Mothers were then asked to manually express their milk. The
135 first 0.5 mL was discarded. The following 1-2 mL was collected in a sterile plastic bijoux bottle put in a
136 cold box and transferred to the MRC laboratories within 8 hours [21].

137 **Laboratory Procedures**

138 *GAS culture from NPS, VS and breast milk samples*

139 Samples were vortexed for 20 seconds prior to storage at -70°C for subsequent processing in batches.
140 During processing, samples were allowed to thaw on ice. Each vial was then vortexed briefly in order to
141 homogenise the medium and 50 μl was dispensed onto crystal violet blood agar (CVBA) (CM0085 Oxoid,
142 UK +0.02 % crystal violet) for selective isolation of beta-haemolytic streptococci [21].

143 After 20–24 h incubation, presumptive beta-haemolytic colonies were streaked onto blood agar to obtain
144 a pure growth. A catalase test was performed to differentiate the presumptive streptococci from

145 staphylococci. Beta-haemolytic and catalase-negative isolates were grouped using the Streptex grouping
146 kit (Remel R30950501) and ultimately reported as group A, B, C, D, F or G [21].

147 ***Antimicrobial Susceptibility Testing***

148 Pure morphologically similar colonies were made into a suspension equal to 0.5% MacFarland's standard
149 and streaked evenly over the surface of Muller Hinton Agar (MHA). Antimicrobial resistance was
150 evaluated using the disk diffusion method (15 ug azithromycin disk) and all resistant isolates (zones of
151 inhibition \leq 13mm) were confirmed using E-test (AZ 256, range 0.016-256ug/ml, Biomerieux) [21]. The
152 CLSI 2016 guidelines were used to interpret azithromycin susceptibility results.

153 ***Whole genome sequencing***

154 Extracted DNA from all GAS isolates (isolated at any timepoint) was used for WGS by Illumina Miseq.
155 Paired end reads quality checked (FastQC) and trimmed for adaptor contaminant and low Q-score bases
156 (Trimmomatic), followed by *de novo* assembly using k-mer settings of 21, 22, 55 and 77 (SPAdes) [24,
157 25]. Assembled genomes were checked for post-assembly quality (QUAST) [26]. Criteria for inclusion in
158 further analysis were $<$ 500 contigs, 1.6-2.0Mb (*S. pyogenes*) or 2.0-2.4Mb (*Streptococcus dysgalactiae*
159 subspecies *equisimilis*; SDSE) assembly length, and $>$ 90% reference genome coverage (*S. pyogenes*).
160 Assembled genomes were annotated using Prokka and the core genome determined using Roary [27,28].
161 Antimicrobial resistance genes were identified using ABRicate with the Resfinder database [29,30].
162 *Emm*-typing was performed using the bioinformatics method described at
163 <https://github.com/BenJamesMetcalf> and the CDC *emm*-typing database
164 (<https://www2.cdc.gov/vaccines/biotech/strepblast.asp>). Core genome alignments were used to draw
165 maximum likelihood phylogenetic trees (RAxML) with 1000 bootstraps [31]. For comparative
166 phylogenetic analysis of SDSE isolates, complete genomes were obtained from NCBI Genome resource
167 (<https://ncbi.nlm.nih.gov/genome/genomes/823?>) and from a previous study reporting SDSE expressing
168 Lancefield group A (SDSE(A)) [32]. Phylogenetic trees were visualized using iTOL

169 (<https://itol.embl.de/>). All sequence data are publicly available at the European Nucleotide Archive
170 (project accession PRJEB36490).

171 **Data Management and Statistical Analysis**

172 The data was double entered into Open Clinica and analysed using STATA 16. We only included
173 participants with all samples collected at each of the specified timepoints. The prevalence of GAS
174 carriage was determined as the presence at any time point for each of the sample types. Prevalence was
175 compared between arms using prevalence ratios (PR) with their corresponding 95% confidence intervals
176 (CI). We used Fisher exact test to obtain p-values. Prevalence of azithromycin resistance was calculated
177 considering all sampled individuals as the denominator. If any isolate from a biological site was resistant,
178 the sample of that participant was considered as resistant.

179 **Ethical Approval**

180 Ethical approval for the main trial was obtained from the Joint MRC Gambia Government Ethics
181 Committee. Ethical approval was given by LSHTM for the secondary data analysis.

182

183 **RESULTS**

184 **Study Population**

185 We recruited 829 women for the trial (414 women to the azithromycin and 415 to the placebo arms) who
186 delivered a total of 843 babies, including 13 stillbirths. Overall, 715 pairs (86.2%) had all study samples
187 collected and are part of this posthoc analysis (Figure 1). Most women were 20-29 years old and the
188 major ethnic group was Mandinka. Approximately 66.6% of deliveries occurred during the dry season
189 (November to May), 5.0% of the newborns were low-birth weight and slightly more than half were males
190 (Table 1).

191 **Prevalence of GAS carriage**

192 Overall, 30 women and 9 newborns had at least 1 sample positive for GAS; 7 women and one baby had 2
193 positive samples and one woman had 5 positive samples (Total of 51 GAS isolates).

194 *Study mothers.* Pre-intervention prevalence of GAS was low and similar in the two study arms, both in the
195 nasopharynx and in the vaginal tract (Table 2, Figure 2a). Post intervention, prevalence of GAS in the
196 azithromycin arm was lower in the nasopharynx (0.28% versus 1.93%, PR=0.15 95% CI (0.02,1.19),
197 p=0.069) and breast milk (0.28% versus 2.48%, PR=0.11 95% CI (0.01,0.90), p=0.021) but not in the
198 vaginal tract (1.99% versus 1.93%, PR=1.03 95%CI (0.37,2.91), p=1.000) (Table 2).

199 *Study newborns.* Prevalence of nasopharyngeal carriage of GAS was low; with a lower prevalence in the
200 azithromycin arm (0.57% versus 1.91%, PR=0.30 95%CI (0.06,1.42), p=0.178) (Table 2, Figure 2b).

201 **Prevalence of azithromycin resistance**

202 *Study mothers.* Prevalence of azithromycin-resistant GAS was similar between study arms for all sample
203 types except for higher resistance in vaginal GAS isolates in the intervention arm [1.99% vs. 0.28%,
204 PR=7.24, 95% CI (0.87,56.92 p=0.035)] (Table 3).

205 *Study newborns.* Prevalence of GAS azithromycin resistance was low and similar between arms with only
206 two participants having resistant GAS isolates (Table 3).

207 **Whole Genome Sequencing**

208 Of the 51 GAS isolates, one sample was not retrieved and five samples (isolated from four mothers) had
209 poor sequences and were excluded from the WGS analysis. Of the remaining 45 isolates, WGS confirmed
210 that 35 were *S. pyogenes* (2 from the azithromycin arm and 33 from the placebo arm of the trial), from
211 which we detected 16 *emm* types. The most common were *emm4* and *emm44* (5 isolates each, 14.2%) and
212 *emm147* (4 isolates, 11.4%). The remaining 10 isolates were SDSE. All were phenotypically resistant to

213 azithromycin and 9 were from participants in the azithromycin arm. All 10 SDSE(A) isolates were
214 retested with Streptex grouping kit and were confirmed as Lancefield group A beta-haemolytic
215 streptococci. We observed that the most common resistance mechanism was by efflux with 14 out of 16
216 azithromycin-resistant isolates (including all SDSE(A)) harbouring both *mefA* and *msrD* genes (*mefA*-
217 *msrD*). In *S. pyogenes*, *mefA* and *msrD* genes were adjacent to each other and located five genes
218 upstream of *catQ* on what appeared to be a phage-like mobile genetic element, integrated downstream of
219 *rlnD* (23s rRNA methyltransferase). In SDSE(A), *mefA* and *msrD* were also present on a mobile genetic
220 element that showed some similarity to that found in the reference SDSE strain AC-2713 (HE858529.1)
221 integrated between *comEC* and *comEA*, but differed in gene content between the two lineages of
222 SDSE(A). The complete sequences of the mobile elements for both *S. pyogenes* and SDSE(A) could not
223 be determined due to contig breaks in the *de novo* assemblies. *S. pyogenes* isolates recovered from the
224 same mother from different biological sites or study timepoints, as well as isolates from their new-borns,
225 all clustered together and belonged to the same *emm* type (Figure 3a). Similar phylogenetic and
226 epidemiological concordance was seen in the SDSE(A) isolates, including a neonatal NPS isolate closely
227 linked to those recovered from the baby's mother (Figure 3b).

228

229 **DISCUSSION**

230 One oral dose (2g) of azithromycin given to women in labour reduced the prevalence of GAS carriage
231 among women and their babies in the nasopharynx and breast milk without an increase of azithromycin
232 resistance in isolates in these sample sites. In contrast, the intervention did not have any effect on the
233 prevalence of GAS carriage in the vaginal tract but induced an increase in the carriage prevalence of
234 azithromycin-resistant SDSE(A).

235 We have previously shown that a single oral dose (2g) of azithromycin given to women in labour reduced
236 the prevalence of *S. aureus*, *S. pneumoniae* and GBS carriage in the mother (nasopharynx, breast milk and

237 vaginal tract) and the baby (nasopharynx) [22]. The current analysis shows that the intervention also
238 reduced the prevalence of GAS carriage in the breast milk and nasopharynx of study women and, less
239 clearly, in the nasopharynx of their newborns. Despite substantial reduction of GAS carriage, we did not
240 observe any short-term increase of azithromycin resistance in these two biological sites.

241 Conversely, the intervention did not have any effect on the prevalence of GAS carriage in the maternal
242 vaginal tract but induced an increase in azithromycin resistance. WGS revealed that GAS vaginal carriage
243 in the azithromycin arm was primarily due to azithromycin-resistant SDSE(A), whereas in the placebo
244 arm, GAS vaginal carriage was entirely due to azithromycin-susceptible *S. pyogenes*. In our previous
245 analysis on *S. aureus*, lower reduction in carriage in the vaginal tract alongside a higher prevalence of
246 resistance was also observed [22]. It is not clear why the effect of the intervention in the vaginal tract
247 differs from other body sites. The concentration of azithromycin in the vaginal tract may be lower and fall
248 more rapidly than in other biological sites. We had previously shown a very high concentration of
249 azithromycin in breast milk during the 4 weeks following the intervention, with a peak during the first 6
250 days (concentration >4,000 µg/L) [33]. A different study using a single dose of azithromycin (1g)
251 showed the azithromycin concentration in the vaginal tract was much lower than the breast milk
252 concentration we observed [34]. In this study, the peak concentration occurred during the first 24-48
253 hours following the intervention [34], long before the post-intervention VS were collected in our study. It
254 is possible that removal of *S. pyogenes* from the vaginal tract allows azithromycin-resistant SDSE to
255 thrive, whereas in other body sites higher concentrations of azithromycin can overcome the efflux-
256 mediated resistance mechanisms [35]. An alternative explanation is that even though SDSE can be found
257 in different biological sites, it is better suited to survive in the vaginal tract [36]. One azithromycin-
258 resistant SDSE(A) was isolated in the vaginal tract from a woman included in the azithromycin arm
259 before the intervention was administered. A phylogenetically-linked isolate was isolated from the same
260 woman's VS after the intervention.

261 The public health and clinical implications of the selective expansion of SDSE(A) in the vaginal tract are
262 difficult to anticipate. However, similarly to *S. pyogenes*, SDSE can cause invasive disease [37-39].
263 Lancefield group A SDSE has been described in previous studies from high income settings, including a
264 collection of isolates causing invasive disease in the USA [32]. The SDSE(A) isolated from our study
265 participants have distinct phylogeny to SDSE(A) previously isolated in USA and fall into two distinct
266 clades. In our study, all SDSE(A) isolates harboured *mefA-msrD* genes, whereas both *erm(B)* and *mefA-*
267 *msrD* genes were found in azithromycin-resistant *S. pyogenes* isolates. While the presence of *mefA* is
268 associated with macrolide resistance, *msrD* has a more dominant role [40, 41]. The presence of both *mefA*
269 and *msrD* may confer high level resistance [41].

270 The trial was designed to evaluate the effect of intra-partum azithromycin on maternal and neonatal
271 carriage of *S. aureus*, *S. pneumoniae* and GBS that are more prevalent than *S. pyogenes* and therefore the
272 current analysis was underpowered as observed in the comparison of trial arms in the nasopharyngeal
273 swabs, especially in newborns. This was an opportunistic study and oropharyngeal rather than
274 nasopharyngeal samples may have been more appropriate for detecting *S. pyogenes* carriage [42], but
275 adds to the growing evidence that group A *Streptococcus* may include SDSE as well as *S. pyogenes*.

276 In conclusion, this study demonstrates that a simple intervention (single dose of intra-partum oral
277 azithromycin), besides reducing carriage of *S. aureus*, *S. pneumoniae* and GBS, can also reduce carriage
278 of GAS, an important cause of maternal and neonatal sepsis. We need to closely monitor the effect of this
279 prophylactic intervention on azithromycin-resistant SDSE(A) isolates and its effect on disease when
280 assessing the overall public health potential of prophylactic intra-partum azithromycin.

281 **Supplementary Data**

282 Supplementary 1: WGS_data.xlsx

283

284 ***Author's contributions***

285 AR and UDA conceived and designed the initial trial. AR, IJ and TdS conceived this posthoc study. IJ
286 wrote the manuscript and AR, TdS, AJK contributed significantly in the final version. CO, BC, AB
287 developed and adapted the field and laboratory work. IJ, EJ and ES analysed the samples. AKS led the
288 team that conducted the WGS. AJK, SYB, CET and TdS performed the WGS analysis. CB provided
289 statistical input to the study. All authors read and approved the final manuscript.

290 ***Acknowledgements***

291 The authors express our profound gratitude to the study participants and their families for agreeing to take
292 part in the study. We give special thanks to the laboratory team (Njemmeh Manneh, Aji Mary Taal, Aru
293 Kumba Baldeh, Modou Lamin Fofana, Momodou Abass Bah and Nano Kora) for their involvement in
294 sample reception and processing. We also extend our gratitude to Jarra Manneh and Abdoulie Kanteh of
295 the MRCG genomics team, Nuredin Ibrahim Mohammed for assisting with generating some figures and
296 the field team (led by Edrissa Sabally and Omar Jarra) for assisting with sample collection.

297 ***Financial support***

298 The MRC Unit in The Gambia at LSHTM receives core funding from the MRC UK. The trial was jointly
299 funded by the MRC UK and the UK Department for International Development (DFID) under the
300 MRC/DFID Concordat agreement (reference number MR/J010391/1). The WGS was funded by a
301 HEFCE/ODA grant from The University of Sheffield (155123). TdS is funded by a Wellcome Trust
302 Intermediate Clinical Fellowship (110058/Z/15/Z). CET is a Royal Society & Wellcome Trust Sir Henry
303 Dale Fellow (208765/Z/17/Z).

304 ***Potential conflicts of interest***

305 All authors declare no conflicts of interest

307 **References**

- 308 1. WHO. Maternal Sepsis. Available at: [https://www.who.int/reproductivehealth/maternal-](https://www.who.int/reproductivehealth/maternal-sepsis/en/)
309 [sepsis/en/](https://www.who.int/reproductivehealth/maternal-sepsis/en/). Accessed 10/02/2018.
- 310 2. Say L, Chou D, Gemmill A, et al. Global causes of maternal death: a WHO systematic analysis.
311 Lancet Glob Health **2014**; 2(6): e323-33.
- 312 3. Shah BA, Padbury JF. Neonatal sepsis: an old problem with new insights. Virulence **2014**; 5(1):
313 170-8.
- 314 4. UNICEF. Under-five Mortality. Available at: [https://data.unicef.org/topic/child-survival/under-](https://data.unicef.org/topic/child-survival/under-five-mortality/)
315 [five-mortality/](https://data.unicef.org/topic/child-survival/under-five-mortality/). Accessed 20/01/2020.
- 316 5. Knowles SJ, O'Sullivan NP, Meenan AM, Hanniffy R, Robson M. Maternal sepsis incidence,
317 aetiology and outcome for mother and fetus: a prospective study. BJOG **2015**; 122(5): 663-71.
- 318 6. Simonsen KA, Anderson-Berry AL, Delair SF, Davies HD. Early-onset neonatal sepsis. Clin
319 Microbiol Rev **2014**; 27(1): 21-47.
- 320 7. Okomo U, Akpalu ENK, Le Doare K, et al. Aetiology of invasive bacterial infection and
321 antimicrobial resistance in neonates in sub-Saharan Africa: a systematic review and meta-
322 analysis in line with the STROBE-NI reporting guidelines. The Lancet Infectious Diseases **2019**;
323 19(11): 1219-34.
- 324 8. Ekelund K, Skinhoj P, Madsen J, Konradsen HB. Invasive group A, B, C and G streptococcal
325 infections in Denmark 1999-2002: epidemiological and clinical aspects. Clin Microbiol Infect
326 **2005**; 11(7): 569-76.

- 327 9. Rantala S, Vuopio-Varkila J, Vuento R, Huhtala H, Syrjanen J. Clinical presentations and
328 epidemiology of beta-haemolytic streptococcal bacteraemia: a population-based study. Clin
329 Microbiol Infect **2009**; 15(3): 286-8.
- 330 10. Anderson BL. Puerperal group A streptococcal infection: beyond Semmelweis. Obstet Gynecol
331 **2014**; 123(4): 874-82.
- 332 11. Ronchetti MP, Bersani I, Piersigilli F, Auriti C. Neonatal Sepsis. Archives of Paediatrics and
333 Developmental Pathology **2017**; 1(3): 1015.
- 334 12. Revelas A, Taxmazidis O. Group A streptococcal infections in children. Southern African Journal
335 of Epidemiology and Infection **2015**; 27(3): 98-103.
- 336 13. Chuang I, Van Beneden C, Beall B, Schuchat A. Population-based surveillance for postpartum
337 invasive group a streptococcus infections, 1995-2000. Clin Infect Dis **2002**; 35(6): 665-70.
- 338 14. Hamilton SM, Stevens DL, Bryant AE. Pregnancy-related group a streptococcal infections:
339 temporal relationships between bacterial acquisition, infection onset, clinical findings, and
340 outcome. Clin Infect Dis **2013**; 57(6): 870-6.
- 341 15. Leonard A, Wright A, Saavedra-Campos M, et al. Severe group A streptococcal infections in
342 mothers and their newborns in London and the South East, 2010-2016: assessment of risk and
343 audit of public health management. BJOG **2019**; 126(1): 44-53.
- 344 16. Barth DD, Engel ME, Whitelaw A, et al. Rationale and design of the African group A streptococcal
345 infection registry: the AFROStrep study. BMJ Open **2016**; 6(2): e010248.

- 346 17. Barth D, M Mayosi B, Badri M, Whitelaw A, E Engel M. Invasive and non-invasive group A β -
347 haemolytic streptococcal infections in patients attending public sector facilities in South Africa:
348 2003–2015. *Southern African Journal of Infectious Diseases* **2017**; 33(1): 12-7.
- 349 18. Seale AC, Davies MR, Anampiu K, et al. Invasive Group A Streptococcus Infection among
350 Children, Rural Kenya. *Emerg Infect Dis* **2016**; 22(2): 224-32.
- 351 19. Belard S, Toepfner N, Arnold B, Alabi AS, Berner R. beta-Hemolytic streptococcal throat carriage
352 and tonsillopharyngitis: a cross-sectional prevalence study in Gabon, Central Africa. *Infection*
353 **2015**; 43(2): 177-83.
- 354 20. Armitage EP, Senghore E, Darboe S, et al. High burden and seasonal variation of paediatric
355 scabies and pyoderma prevalence in The Gambia: A cross-sectional study. *PLoS Negl Trop Dis*
356 **2019**; 13(10): e0007801.
- 357 21. Roca A, Oluwalana C, Camara B, et al. Prevention of bacterial infections in the newborn by pre-
358 delivery administration of azithromycin: Study protocol of a randomized efficacy trial. *BMC*
359 *Pregnancy Childbirth* **2015**; 15: 302.
- 360 22. Roca A, Oluwalana C, Bojang A, et al. Oral azithromycin given during labour decreases bacterial
361 carriage in the mothers and their offspring: a double-blind randomized trial. *Clin Microbiol Infect*
362 **2016**; 22(6): 565 e1-9.
- 363 23. Oluwalana C, Camara B, Bottomley C, et al. Azithromycin in Labor Lowers Clinical Infections in
364 Mothers and Newborns: A Double-Blind Trial. *Pediatrics* **2017**; 139(2).
- 365 24. Bolger AM, Lohse M, Usadel B. Trimmomatic: a flexible trimmer for Illumina sequence data.
366 *Bioinformatics* **2014**; 30(15): 2114-20.

- 367 25. Bankevich A, Nurk S, Antipov D, et al. SPAdes: a new genome assembly algorithm and its
368 applications to single-cell sequencing. *Journal of computational biology : a journal of*
369 *computational molecular cell biology* **2012**; 19(5): 455-77.
- 370 26. Gurevich A, Saveliev V, Vyahhi N, Tesler G. QUAST: quality assessment tool for genome
371 assemblies. *Bioinformatics* **2013**; 29(8): 1072-5.
- 372 27. Seemann T. Prokka: rapid prokaryotic genome annotation. *Bioinformatics* **2014**; 30(14): 2068-9.
- 373 28. Page AJ, Cummins CA, Hunt M, et al. Roary: rapid large-scale prokaryote pan genome analysis.
374 *Bioinformatics* **2015**; 31(22): 3691-3.
- 375 29. Zankari E, Hasman H, Cosentino S, et al. Identification of acquired antimicrobial resistance
376 genes. *J Antimicrob Chemother* **2012**; 67(11): 2640-4.
- 377 30. Karsnitz DB. Puerperal infections of the genital tract: a clinical review. *J Midwifery Womens*
378 *Health* **2013**; 58(6): 632-42.
- 379 31. Stamatakis A. RAxML version 8: a tool for phylogenetic analysis and post-analysis of large
380 phylogenies. *Bioinformatics (Oxford, England)* **2014**; 30(9): 1312-3.
- 381 32. Chochua S, Rivers J, Mathis S, et al. Emergent Invasive Group A *Streptococcus dysgalactiae*
382 subsp. *equisimilis*, United States, 2015-2018. *Emerg Infect Dis* **2019**; 25(8): 1543-7.
- 383 33. Salman S, Davis TM, Page-Sharp M, et al. Pharmacokinetics of Transfer of Azithromycin into the
384 Breast Milk of African Mothers. *Antimicrob Agents Chemother* **2015**; 60(3): 1592-9.
- 385 34. Vodstrcil LA, Rupasinghe TWT, Kong FYS, et al. Measurement of tissue azithromycin levels in
386 self-collected vaginal swabs post treatment using liquid chromatography and tandem mass
387 spectrometry (LC-MS/MS). *PLoS One* **2017**; 12(5): e0177615.

- 388 35. Levison ME, Levison JH. Pharmacokinetics and pharmacodynamics of antibacterial agents.
389 Infectious disease clinics of North America **2009**; 23(4): 791-vii.
- 390 36. Ciszewski M, Szewczyk EM. Potential Factors Enabling Human Body Colonization by Animal
391 Streptococcus dysgalactiae subsp. equisimilis Strains. Current microbiology **2017**; 74(5): 650-4.
- 392 37. Yamaoka S, Oghihara T, Yasui M, et al. Neonatal streptococcal toxic shock syndrome caused by
393 Streptococcus dysgalactiae subsp. equisimilis. Pediatr Infect Dis J **2010**; 29(10): 979-81.
- 394 38. Watanabe S, Takemoto N, Ogura K, Miyoshi-Akiyama T. Severe invasive streptococcal infection
395 by Streptococcus pyogenes and Streptococcus dysgalactiae subsp. equisimilis. Microbiol
396 Immunol **2016**; 60(1): 1-9.
- 397 39. Loubinoux J, Plainvert C, Collobert G, et al. Adult invasive and noninvasive infections due to
398 Streptococcus dysgalactiae subsp. equisimilis in France from 2006 to 2010. J Clin Microbiol **2013**;
399 51(8): 2724-7.
- 400 40. Zhang Y, Tatsuno I, Okada R, et al. Predominant role of msr(D) over mef(A) in macrolide
401 resistance in Streptococcus pyogenes. Microbiology **2016**; 162(1): 46-52.
- 402 41. Tatsuno I, Isaka M, Masuno K, Hata N, Matsumoto M, Hasegawa T. Functional Predominance of
403 msr(D), Which Is More Effective as mef(A)-Associated Than mef(E)-Associated, Over
404 mef(A)/mef(E) in Macrolide Resistance in Streptococcus pyogenes. Microb Drug Resist **2018**;
405 24(8): 1089-97.
- 406 42. Martin J. The Streptococcus pyogenes Carrier State. In: Ferretti JJ, Stevens DL, Fischetti VA.
407 Streptococcus pyogenes : Basic Biology to Clinical Manifestations. Oklahoma City (OK), **2016**.
408

410 Table 1: Baseline Demographic Characteristics of study participants

Characteristics		Placebo n (%)	Azithromycin n (%)
Mothers		n = 363	n = 352
Age	18-19 years	32 (8.8)	20 (5.7)
	20-29 years	239 (65.8)	229 (65.1)
	≥30 years	92 (25.3)	103 (29.3)
Ethnicity ^a	Mandinka	160 (44.1)	140 (39.8)
	Wolof	42 (11.6)	42 (11.8)
	Jola	53 (14.6)	62 (17.6)
	Fula	57 (15.7)	62 (17.6)
	Other	51 (14.1)	43 (12.2)
Season of Delivery	Dry (Nov – May)	244 (67.2)	232 (65.9)
	Rainy (June – Oct)	119 (32.8)	120 (34.1)
Newborns		n = 366	n = 352
Birth weight	Low birth weight(<2.5kg)	23 (6.3)	13 (3.7)
	Normal birth weight(>2.5kg)	338 (93.7)	338 (96.3)
Apgar Score (at birth)	0	0	0
	1 – 6	3 (0.8)	1 (0.3)
	7 – 10	362 (98.9)	350 (99.4)
Sex of child	Male	195 (53.3)	180 (51.1)
	Female	171 (46.7)	172 (48.9)

411 ^aEthnicity missing in n=3, ^bApgar score in n=2

412 Table 2: Prevalence of GAS carriage in the nasopharynx, breastmilk and vaginal samples of mothers and
413 nasopharynx of babies

MOTHERS				
	Placebo (%) n = 363	Azithromycin (%) n = 352	Prevalence Ratio (95% CI)	p-value
Nasopharyngeal carriage				
Pre-intervention ^a	0	1 (0.28)	-	0.492
Post Intervention ^b	7 (1.93)	1 (0.28)	0.15 (0.02,1.19)	0.069
Breastmilk carriage^c				
Post Intervention ^b	9 (2.48)	1 (0.28)	0.11 (0.01,0.90)	0.021
Vaginal carriage				
Pre-intervention ^a	1 (0.28)	2 (0.57)	2.06 (0.18,22.64)	0.619
Post Intervention ^d	7 (1.93)	7 (1.99)	1.03 (0.37, 2.91)	1.000
NEWBORNS				
	Placebo (%) n = 366	Azithromycin (%) n = 352	Prevalence Ratio (95% CI)	p value
Post intervention ^e	7 (1.91)	2 (0.57)	0.30 (0.06,1.42)	0.178

414 ^aCarriage at day 0 before treatment

415 ^bCarriage at days 3, 6, 14 and 28 combined

416 ^cThere are no pre-intervention samples for the breast milk

417 ^dDay 10(day 8 – 13)

418 ^eDay 0, 3,6,14 and 28 combined. Day 0 is the day of birth

419

420 Table 3: Prevalence of carriage of resistant GAS in the nasopharynx, breastmilk and vaginal
 421 samples of mothers and nasopharynx of babies.

422 ^aCarriage at day 0 before treatment

MOTHERS				
	Placebo (%) n = 363	Azithromycin (%) n = 352	Prevalence Ratio (95% CI)	p-value
Nasopharyngeal carriage				
Pre-intervention^a	0	0	-	-
Post-Intervention^b	2 (0.55)	1 (0.28)	0.52 (0.05,5.66)	1.000
Breastmilk carriage^c				
Post-Intervention^b	0	1 (0.28)	-	0.492
Vaginal carriage				
Pre-intervention^a	0	1 (0.28)	-	-
Post-Intervention^d	1 (0.28)	7 (1.99)	7.24 (0.87,56.92)	0.035
NEWBORNS				
	Placebo (%) n = 366	Azithromycin (%) n = 352	Prevalence Ratio (95% CI)	p value
Post-intervention^e	1 (0.27)	1 (0.28)	1.04 (0.07,16.56)	1.000

423 ^bCarriage at days 3, 6, 14 and 28 combined

424 ^cThere are no pre-intervention samples for the breast milk

425 ^dDay 10(day 8 – 13)

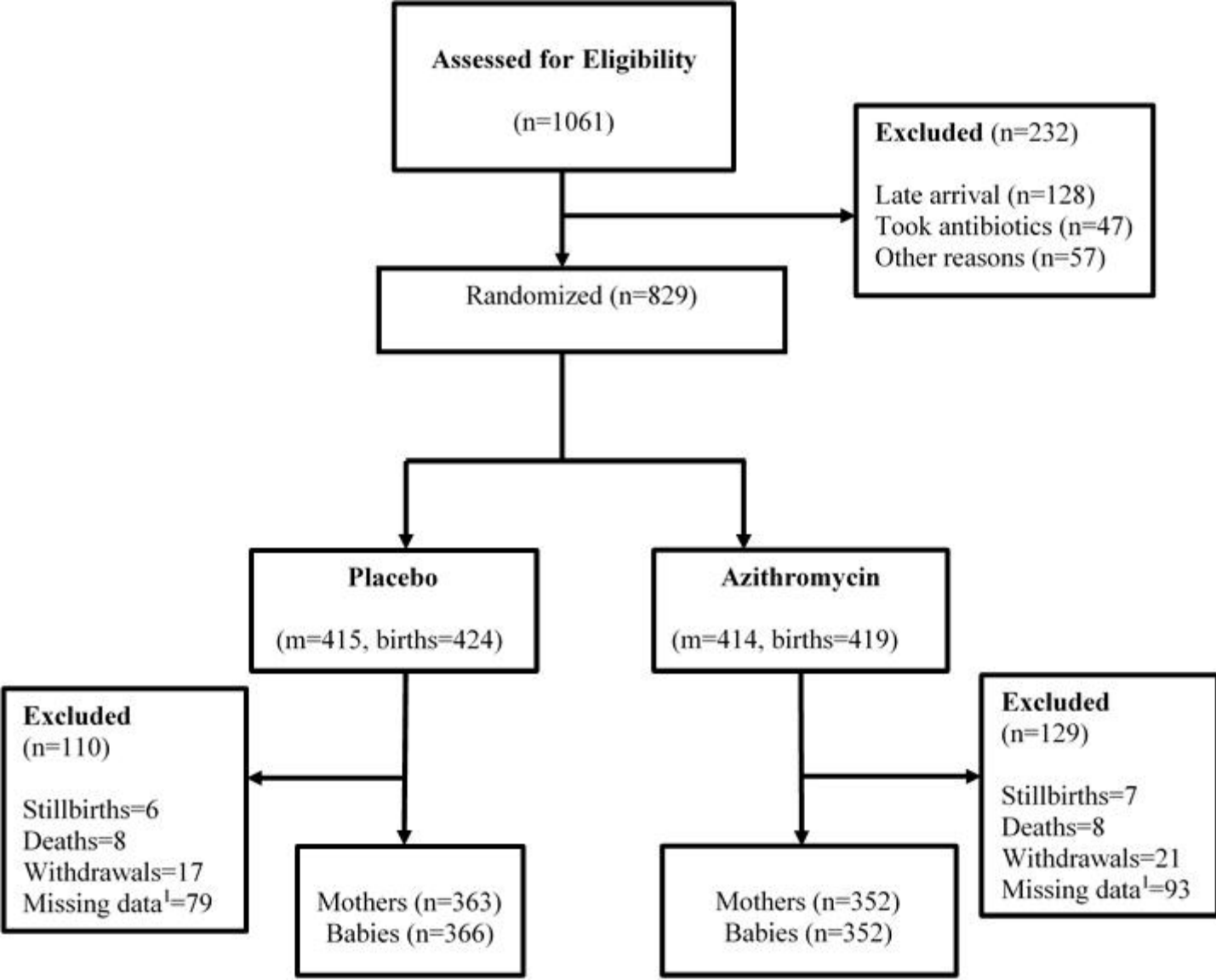
426 ^eDay 0, 3,6,14 and 28 combined. Day 0 is the day of birth

427

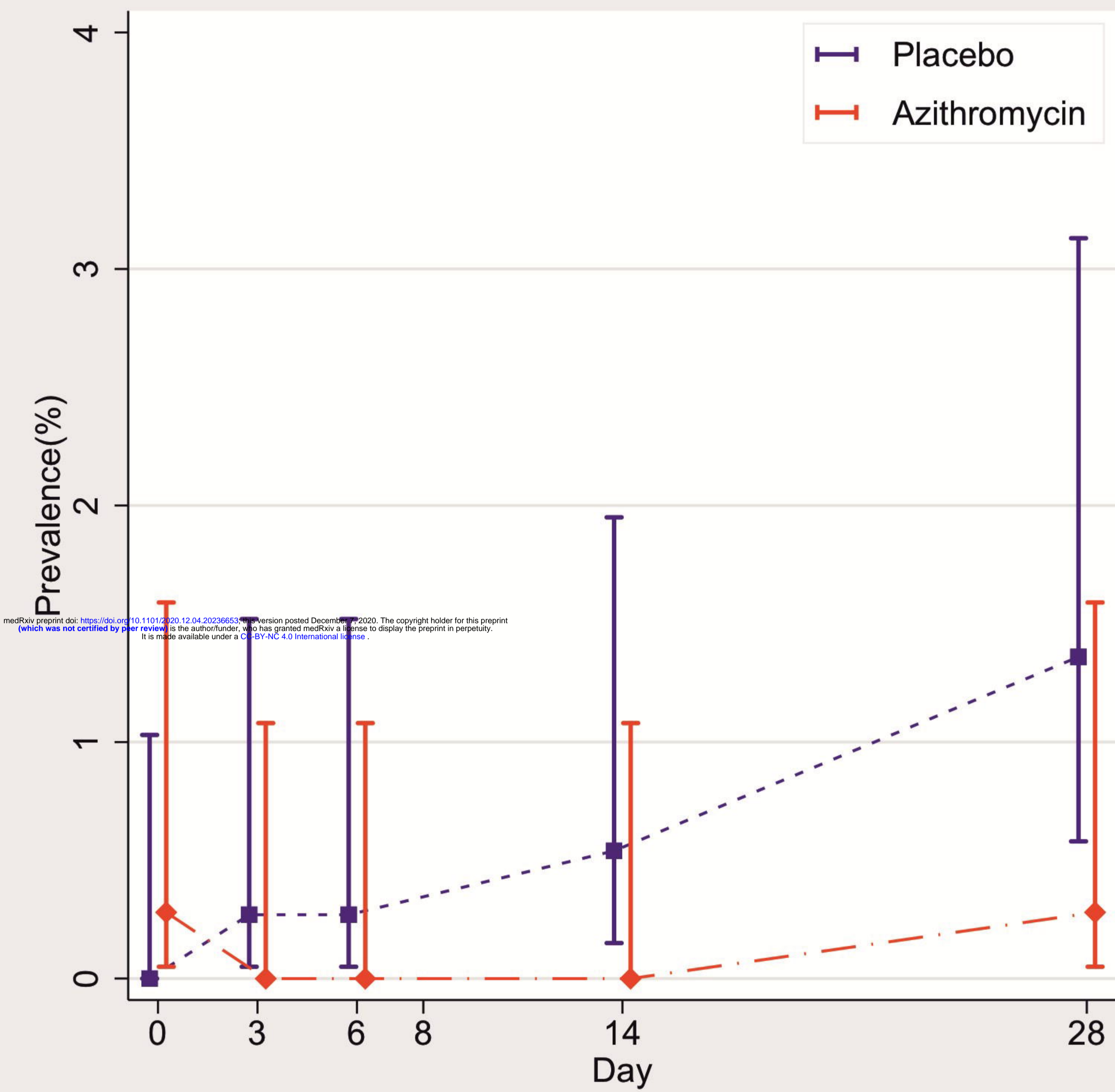
428 Figure 1: Trial profile
429 ¹ Mother/baby pair with ≥ 1 missing sample
430

431 Figure 2: (a) Prevalence of i) maternal nasopharyngeal carriage and ii) breastmilk carriage of
432 GAS at different timepoints in the azithromycin and placebo arms. (b) Prevalence of neonatal
433 nasopharyngeal carriage of GAS at different timepoints in the azithromycin and placebo arms
434

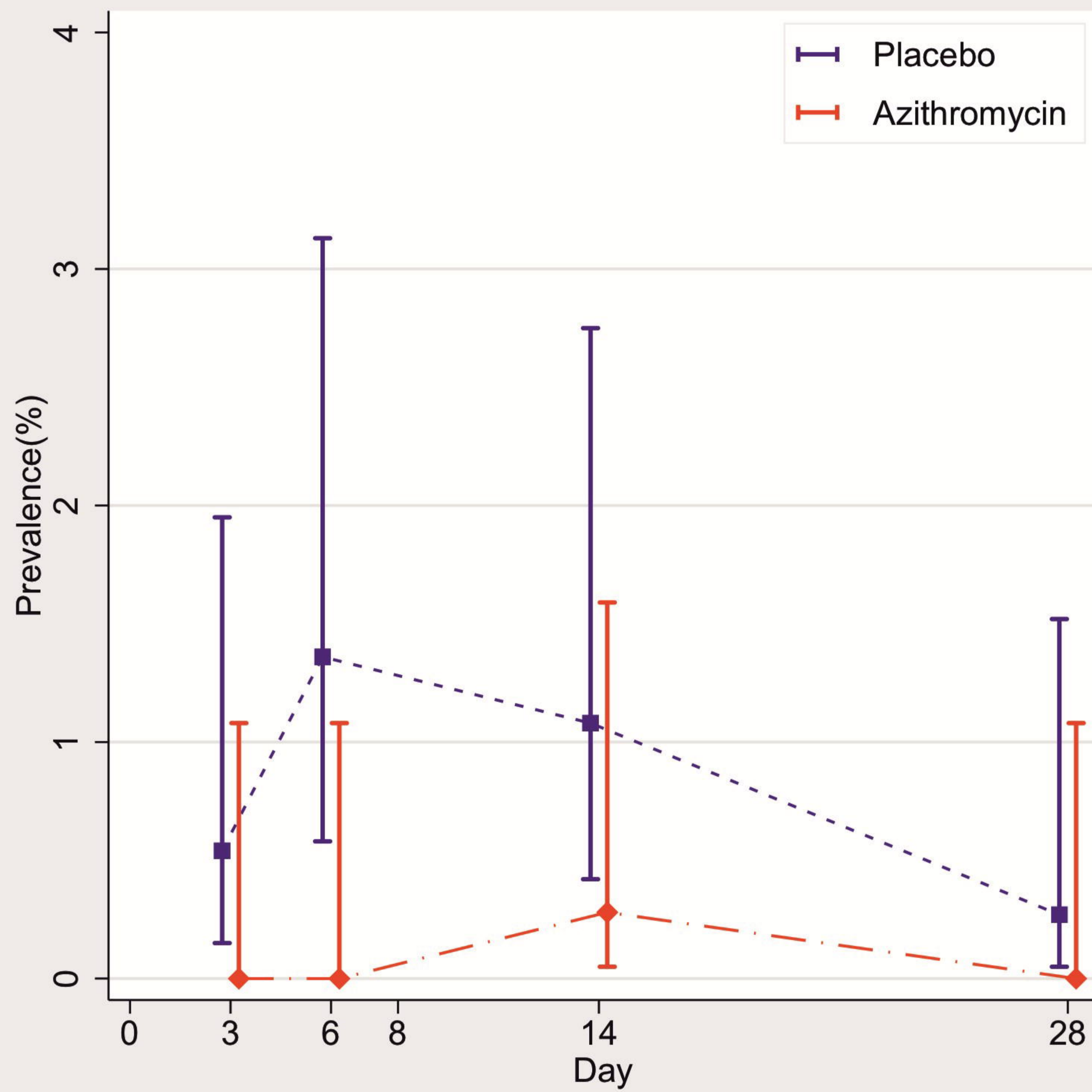
435 Figures 3: Midpoint rooted maximum likelihood core-genome phylogenetic analysis using
436 RAxML GTRCAT model with 1000 bootstrap replicates. Circle symbols indicate >99%
437 bootstrap support. (a) Core-genome (1299 genes) phylogenetic analysis of 35 *S. pyogenes* isolates
438 from the study cohort. (b) International contextualization (based on core genome of 1221 genes)
439 of 10 *S. dysgalactiae* subspecies *equisimilis* isolates with individual core-genome (upper clade:
440 2106 genes, lower clade: 2078 genes) phylogenetic analysis of the two distinct clades in the
441 study cohort. (Annotation key: country of origin; black=the Gambia, yellow=USA, dark
442 green=UK, light green=Germany, pink=Japan, white=unknown, symbols; filled=present,
443 unfilled=absent, no symbol=unknown; study participant ID (unique study identifier for
444 mother/baby units); M=mother, B=newborn, NPS=nasopharyngeal swab, VS=vaginal swab,
445 BM=breast milk, AMR=antimicrobial resistance).



NPS

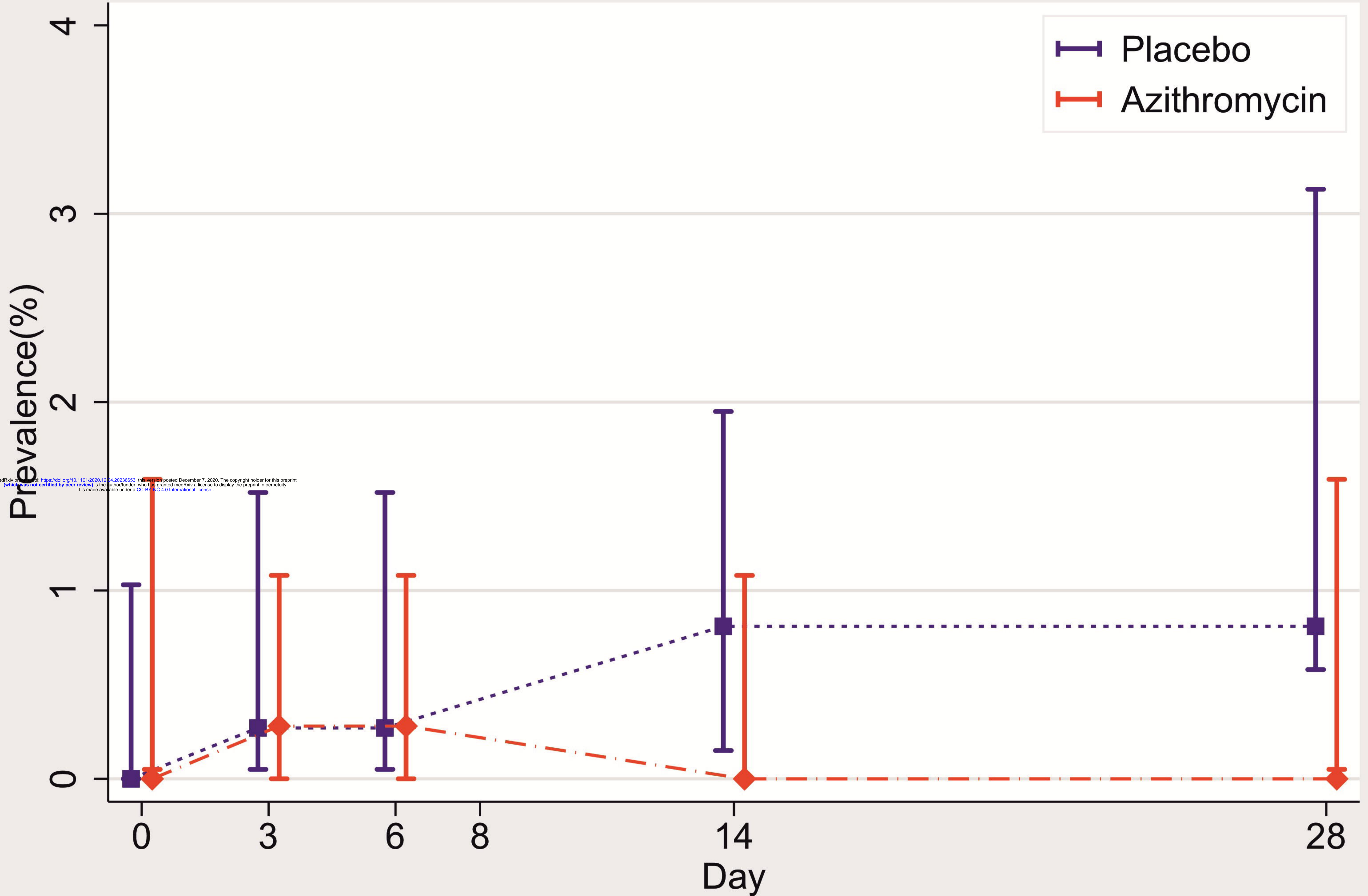


BM



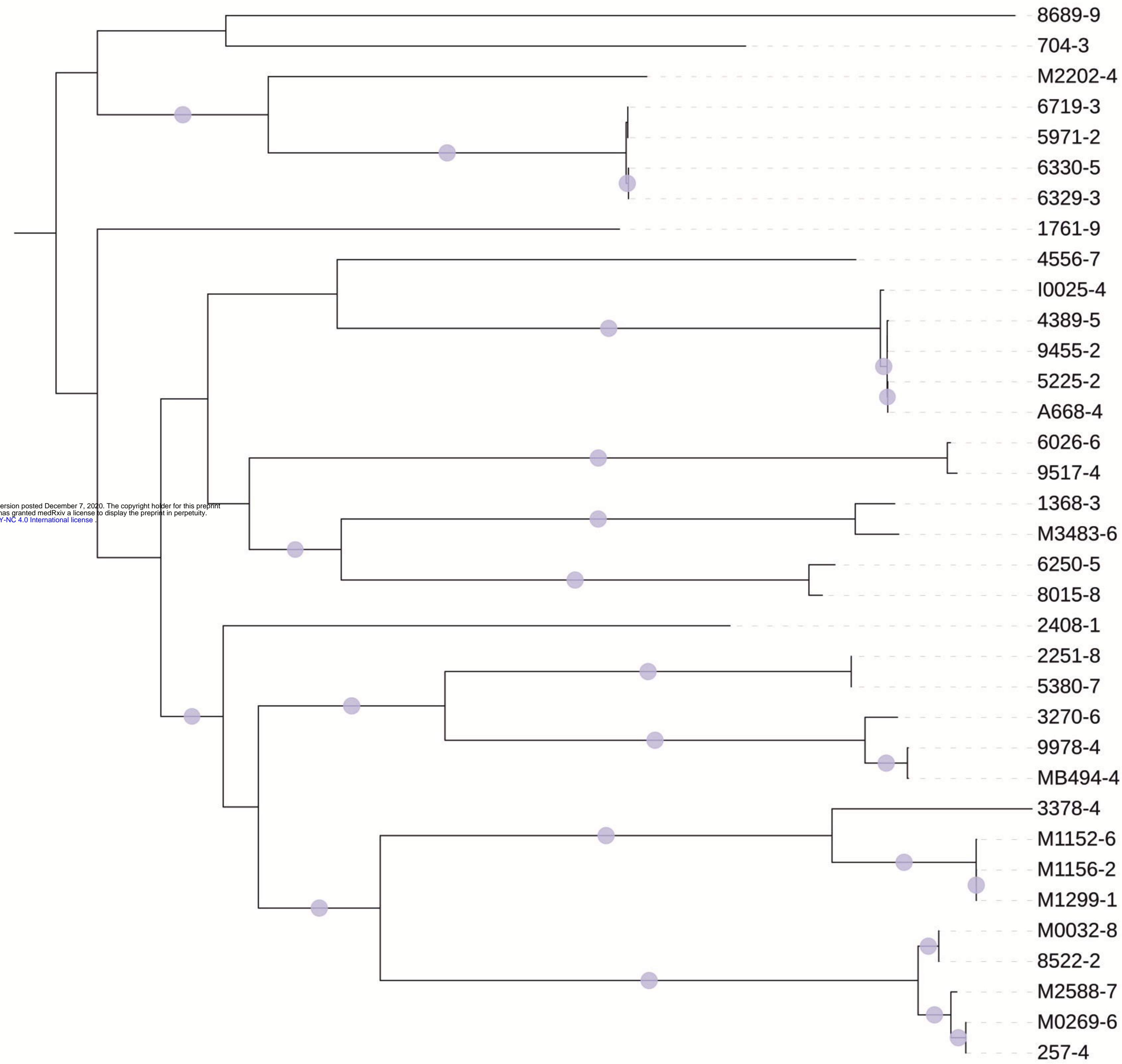
medRxiv preprint doi: <https://doi.org/10.1101/2020.12.04.20236653>; this version posted December 7, 2020. The copyright holder for this preprint (which was not certified by peer review) is the author/funder, who has granted medRxiv a license to display the preprint in perpetuity. It is made available under a CC-BY-NC 4.0 International license.

NPS



medRxiv preprint doi: <https://doi.org/10.1101/2020.12.04.20236653>; this version posted December 7, 2020. The copyright holder for this preprint (which was not certified by peer review) is the author/funder, who has granted medRxiv a license to display the preprint in perpetuity. It is made available under a CC-BY-NC 4.0 International license.

A.



0.001

medRxiv preprint doi: <https://doi.org/10.1101/2020.12.04.20236653>; this version posted December 7, 2020. The copyright holder for this preprint (which was not certified by peer review) is the author/funder, who has granted medRxiv a license to display the preprint in perpetuity. It is made available under a [CC-BY-NC 4.0 International license](https://creativecommons.org/licenses/by-nc/4.0/).

<i>Emm</i> type	Study participant ID	Azithromycin Placebo	Study arm	Day of sample	Site of sample	Phenotypic azithromycin resistance	AMR genes
emm57	M 663/7	□	■	28	NPS	▽	ant(6)-III ○ aph(3') ○ erm(B) ○ cat(pC194) ○ dfrK ○ dfrG ● tet(M) ● tet(L) ○ mef(A) ○ msr(D) ○ catQ ○
emm122	M 573/7	□	■	8	VS	▽	ant(6)-III ○ aph(3') ○ erm(B) ○ cat(pC194) ○ dfrK ○ dfrG ○ tet(M) ● tet(L) ○ mef(A) ○ msr(D) ○ catQ ○
emm80	M 467/2	□	■	3	BM	▽	ant(6)-III ○ aph(3') ○ erm(B) ○ cat(pC194) ○ dfrK ○ dfrG ○ tet(M) ● tet(L) ○ mef(A) ○ msr(D) ○ catQ ○
emm147	M 500/5	□	■	28	NPS	▽	ant(6)-III ○ aph(3') ○ erm(B) ○ cat(pC194) ○ dfrK ○ dfrG ○ tet(M) ● tet(L) ○ mef(A) ○ msr(D) ○ catQ ○
emm147	B 500/5	□	■	6	NPS	▽	ant(6)-III ○ aph(3') ○ erm(B) ○ cat(pC194) ○ dfrK ○ dfrG ○ tet(M) ● tet(L) ○ mef(A) ○ msr(D) ○ catQ ○
emm147	B 500/5	□	■	14	NPS	▽	ant(6)-III ○ aph(3') ○ erm(B) ○ cat(pC194) ○ dfrK ○ dfrG ○ tet(M) ● tet(L) ○ mef(A) ○ msr(D) ○ catQ ○
emm147	M 500/5	□	■	14	NPS	▽	ant(6)-III ○ aph(3') ○ erm(B) ○ cat(pC194) ○ dfrK ○ dfrG ○ tet(M) ● tet(L) ○ mef(A) ○ msr(D) ○ catQ ○
emm18	M 133/1	□	■	8	VS	▽	ant(6)-III ○ aph(3') ○ erm(B) ○ cat(pC194) ○ dfrK ○ dfrG ○ tet(M) ● tet(L) ○ mef(A) ○ msr(D) ○ catQ ○
emm118	M 375/7	□	■	6	NPS	▽	ant(6)-III ○ aph(3') ○ erm(B) ○ cat(pC194) ○ dfrK ○ dfrG ○ tet(M) ● tet(L) ○ mef(A) ○ msr(D) ○ catQ ○
emm44	M 827/4	□	■	8	VS	▽	ant(6)-III ○ aph(3') ○ erm(B) ○ cat(pC194) ○ dfrK ○ dfrG ○ tet(M) ● tet(L) ○ mef(A) ○ msr(D) ○ catQ ○
emm44	B 337/4	□	■	14	NPS	▽	ant(6)-III ○ aph(3') ○ erm(B) ○ cat(pC194) ○ dfrK ○ dfrG ○ tet(M) ● tet(L) ○ mef(A) ○ msr(D) ○ catQ ○
emm44	M 756/4	□	■	8	VS	▽	ant(6)-III ○ aph(3') ○ erm(B) ○ cat(pC194) ○ dfrK ○ dfrG ○ tet(M) ● tet(L) ○ mef(A) ○ msr(D) ○ catQ ○
emm44	M 361/2	□	■	28	NPS	▽	ant(6)-III ○ aph(3') ○ erm(B) ○ cat(pC194) ○ dfrK ○ dfrG ○ tet(M) ● tet(L) ○ mef(A) ○ msr(D) ○ catQ ○
emm44	M 361/2	□	■	14	NPS	▽	ant(6)-III ○ aph(3') ○ erm(B) ○ cat(pC194) ○ dfrK ○ dfrG ○ tet(M) ● tet(L) ○ mef(A) ○ msr(D) ○ catQ ○
emm81	M 439/5	□	■	28	NPS	▽	ant(6)-III ○ aph(3') ○ erm(B) ○ cat(pC194) ○ dfrK ○ dfrG ○ tet(M) ● tet(L) ○ mef(A) ○ msr(D) ○ catQ ○
emm81	M 778/7	□	■	8	VS	▽	ant(6)-III ○ aph(3') ○ erm(B) ○ cat(pC194) ○ dfrK ○ dfrG ○ tet(M) ● tet(L) ○ mef(A) ○ msr(D) ○ catQ ○
emm49	M 108/4	□	■	8	VS	▽	ant(6)-III ● aph(3') ● erm(B) ● cat(pC194) ○ dfrK ○ dfrG ○ tet(M) ● tet(L) ○ mef(A) ○ msr(D) ○ catQ ○
emm49	M 792/2	□	■	6	BM	▽	ant(6)-III ● aph(3') ● erm(B) ● cat(pC194) ○ dfrK ○ dfrG ○ tet(M) ● tet(L) ○ mef(A) ○ msr(D) ○ catQ ○
emm75	B 451/2	□	■	28	NPS	▽	ant(6)-III ○ aph(3') ○ erm(B) ○ cat(pC194) ○ dfrK ○ dfrG ○ tet(M) ● tet(L) ○ mef(A) ○ msr(D) ○ catQ ○
emm75	B 594/7	□	■	28	NPS	▽	ant(6)-III ○ aph(3') ○ erm(B) ○ cat(pC194) ○ dfrK ○ dfrG ○ tet(M) ● tet(L) ○ mef(A) ○ msr(D) ○ catQ ○
emm88	M 202/3	□	■	0	NPS	▽	ant(6)-III ○ aph(3') ○ erm(B) ○ cat(pC194) ○ dfrK ○ dfrG ○ tet(M) ● tet(L) ○ mef(A) ○ msr(D) ○ catQ ○
emm103	M 433/2	□	■	14	BM	▽	ant(6)-III ○ aph(3') ○ erm(B) ○ cat(pC194) ○ dfrK ○ dfrG ○ tet(M) ● tet(L) ○ mef(A) ○ msr(D) ○ catQ ○
emm103	M 433/2	□	■	8	VS	▽	ant(6)-III ○ aph(3') ○ erm(B) ○ cat(pC194) ○ dfrK ○ dfrG ○ tet(M) ● tet(L) ○ mef(A) ○ msr(D) ○ catQ ○
emm11	M 260/3	□	■	8	VS	▽	ant(6)-III ● aph(3') ● erm(B) ● cat(pC194) ○ dfrK ○ dfrG ○ tet(M) ● tet(L) ○ mef(A) ○ msr(D) ○ catQ ○
emm11	B 763/2	□	■	28	NPS	▽	ant(6)-III ○ aph(3') ○ erm(B) ○ cat(pC194) ○ dfrK ○ dfrG ○ tet(M) ● tet(L) ○ mef(A) ○ msr(D) ○ catQ ○
emm11	M 787/4	□	■	6	BM	▽	ant(6)-III ○ aph(3') ○ erm(B) ○ cat(pC194) ○ dfrK ○ dfrG ○ tet(M) ● tet(L) ○ mef(A) ○ msr(D) ○ catQ ○
emm82	M 763/2	□	■	6	BM	▽	ant(6)-III ○ aph(3') ○ erm(B) ○ cat(pC194) ○ dfrK ○ dfrG ○ tet(M) ● tet(L) ○ mef(A) ○ msr(D) ○ catQ ○
emm73	M 179/1	□	■	3	BM	▽	ant(6)-III ○ aph(3') ○ erm(B) ○ cat(pC194) ○ dfrK ○ dfrG ○ tet(M) ● tet(L) ○ mef(A) ○ msr(D) ○ catQ ○
emm73	M 179/1	□	■	6	BM	▽	ant(6)-III ○ aph(3') ○ erm(B) ○ cat(pC194) ○ dfrK ○ dfrG ○ tet(M) ● tet(L) ○ mef(A) ○ msr(D) ○ catQ ○
emm73	M 179/1	□	■	28	BM	▽	ant(6)-III ○ aph(3') ○ erm(B) ○ cat(pC194) ○ dfrK ○ dfrG ○ tet(M) ● tet(L) ○ mef(A) ○ msr(D) ○ catQ ○
emm4	M 052/5	□	■	14	BM	▽	ant(6)-III ○ aph(3') ○ erm(B) ○ cat(pC194) ○ dfrK ○ dfrG ○ tet(M) ● tet(L) ○ mef(A) ○ msr(D) ○ catQ ○
emm4	B 700/2	□	■	14	NPS	▽	ant(6)-III ○ aph(3') ○ erm(B) ○ cat(pC194) ○ dfrK ○ dfrG ○ tet(M) ● tet(L) ○ mef(A) ○ msr(D) ○ catQ ○
emm4	M 547/1	□	■	14	BM	▽	ant(6)-III ○ aph(3') ○ erm(B) ○ cat(pC194) ○ dfrK ○ dfrG ○ tet(M) ● tet(L) ○ mef(A) ○ msr(D) ○ catQ ○
emm4	M 052/5	□	■	6	BM	▽	ant(6)-III ○ aph(3') ○ erm(B) ○ cat(pC194) ○ dfrK ○ dfrG ○ tet(M) ● tet(L) ○ mef(A) ○ msr(D) ○ catQ ○
emm4	B 052/5	□	■	3	NPS	▽	ant(6)-III ○ aph(3') ○ erm(B) ○ cat(pC194) ○ dfrK ○ dfrG ○ tet(M) ● tet(L) ○ mef(A) ○ msr(D) ○ catQ ○

