

1 **Articles**

2

3 **Impact of the COVID-19 pandemic on infant and pediatric asthma: a**
4 **multi-center survey using an administrative database in Japan**

5

6 Seiko Bun ^{1,2} DrPH, Kenji Kishimoto ¹ MD, Jung-ho Shin ¹ DDS, MPH, Daisuke

7 Takada ¹ MD, Tetsuji Morishita ¹ MD, PhD, Susumu Kunisawa ¹ MD, PhD, Yuichi

8 Imanaka ¹ MD, MPH, PhD

9

10 1 Department of Healthcare Economics and Quality Management, Graduate

11 School of Medicine, Kyoto University, Kyoto, Japan

12 2 Department of Pharmacy, National Center for Child Health and Development

13 Hospital, Tokyo, Japan

14

15 Correspondence: Yuichi Imanaka, MD, Ph.D

16 Department of Healthcare Economics and Quality Management, Graduate

17 School of Medicine, Kyoto University, Yoshida Konoe-cho, Sakyo-ku, Kyoto

18 606-8501, JAPAN

19 Tel : +81-75-753-4454 Fax : +81-75-753-4455

20 E-mail: imanaka-y@umin.net

21

22 Alternate corresponding author:

23 Seiko Bun, Department of Healthcare Economics and Quality Management,

24 Graduate School of Medicine, Kyoto University, Yoshida Konoe-cho, Kyoto

25 606-8501, Japan.

26 Tel: +81-75-753-4454, Fax: +81-75-753-4455

27 Email: bun-s@ncchd.go.jp

28

29 Words:

30 Summary: 250

31 Article: 1972words

32

33 **Key words:** Children, infant, SARS-CoV-2, COVID-19, Administrative database,

34 Asthma

35

36

37 **Abstract**

38 **Background**

39 Limited data are available on the relationship between infant and pediatric
40 asthma and severe acute respiratory syndrome coronavirus 2 (COVID-19).
41 Political limitations such as school closure may affect the treatment behavior of
42 pediatric asthma. To investigate the trends of treatment behavior in the field of
43 pediatrics during the COVID-19 pandemic.

44 **Methods**

45 This is a retrospective observational study using Diagnosis Procedure
46 Combination (DPC) data from the Quality Indicator/Improvement Project (QIP)
47 database. We identified children with asthma aged 15 years or younger who
48 were patients from July 1, 2018, to June 30, 2020. The main outcome was a
49 comparison between asthma patients' treatment behavior before the COVID-19
50 pandemic and during the COVID-19 pandemic.
51 We statistically tested the admission volume changes based on the discharge
52 date after adjusting for seasonality through a Fourier term using an interrupted
53 time-series analysis (ITS).

54 **Results**

55 We identified 10,481 inpatients cases in 67 hospitals and 258,911 out-patients
56 cases in 180 hospitals who were diagnosed with asthma. We performed ITS
57 analysis for inpatients. The reduction in the number of patients during this
58 period was estimated to be 232 ($P=0.001$). In addition, ITS analysis was
59 performed for patients aged <3 years. The reduced number of patients during
60 this period was estimated to be 155 ($P<0.001$).

61 **Conclusions**

62 We found that the number of pediatric asthma patients dramatically decreased
63 during the COVID-19 pandemic. We need to continue research into the trends
64 of pediatric asthma patients after the COVID-19 pandemic in Japan.

65

66

67

68

69

70

71

72

73 **Introduction**

74 In December 2019, pneumonia caused by a novel coronavirus (SARS-CoV-2)
75 occurred in Wuhan, China. According to the World Health Organization (WHO),
76 217,769 deaths had been caused by coronavirus disease 2019 (COVID-19)
77 globally by May 1, 2020¹. Public health interventions, including school closure
78 and the city lockdown, began in many countries.

79 Pediatric asthma is one of the most common diseases in infant to school-age
80 children. Risk factors, including respiratory virus infection, air pollution, and
81 house dust, can exacerbate pediatric asthma. Environmental triggers are
82 particularly important. In Japan, all schools excluding nursery schools were
83 closed nationwide on February 27, 2020². Besides, the COVID-19 pandemic
84 caused dramatic changes in daily practice and health care delivery systems in
85 many countries. Some states reported hospital avoidance in pediatrics,
86 including emergency department visits and hospital admission during the
87 COVID-19 pandemic.

88 Unlike the lockdown policy in many countries, including the United States,
89 China, and European countries, the Japanese lockdown did not have a legally
90 binding force. Therefore, the lockdown in Japan was a voluntary lockdown².

91 The 'voluntary lockdown' promoted a change of lifestyle, such as decreasing
92 transportation and industrial activity and closure of schools, which intended to
93 limit physical interactions among people. These political interventions may have
94 affected the environment for children.

95 In this study, we describe the impact of the COVID-19 pandemic on pediatric
96 asthma-related health care utilization including emergency departments and
97 hospitalization.

98 Inhaled steroids and β_2 agonists are a key treatment option for asthma³. The
99 Japanese Society of Pediatric Allergy and Clinical Immunology recommends
100 using a metered-dose inhaler rather than a nebulizer because a nebulizer can
101 spread the aerosol on caregivers and medical staff. We also investigated the
102 trends for the prescription of inhalers⁴.

103

104 **Methods**

105 **Source of data**

106 Our study was a retrospective observational study using Diagnosis Procedure
107 Combination (DPC) data from the Quality Indicator/Improvement Project (QIP)
108 database. The QIP database contains DPC data from acute care hospitals

109 voluntarily participating in the project. The DPC/per-diem payment system
110 (PDPS) is a Japanese prospective payment system applied to acute care
111 hospitals. In total, 1,730 hospitals adopted the DPC/PDPS in 2018, which
112 accounted for 54% (482,618/891,872) of general beds of Japanese hospitals in
113 2018^{5,6}

114 The cumulative number of participating hospitals for the QIP was over 500,
115 which were located all over Japan and included both public and private
116 hospitals of various sizes. The number of general beds, which are hospital beds
117 that are not psychiatric, infectious diseases, or tuberculosis beds according to
118 the Japanese classification of hospital beds, ranged from 30 to 1,151 in 2016.

119 The DPC data consist of claims and discharge summaries, including
120 International Classification of Diseases, 10th Revision (ICD-10) codes
121 classifying the primary diagnosis, cause of admission, the most and the
122 second-most medical-resource-intensive diagnoses, up to 10 comorbidities,
123 and 10 complications. The DPC data also contain codes of all services and
124 medications provided during each hospitalization as well as PDPS information.

125

126 **Study population**

127 The study was conducted after obtaining approval from the Kyoto University
128 Hospital Ethics committee of the Kyoto University Graduate School and Faculty
129 of Medicine, according to the guidelines on medical and epidemiological
130 research (No. R0135). Using the DPC database, we identified inpatients with
131 discharge dates from July 1, 2018 to June 30, 2020, and outpatients at the date
132 of a visiting hospital within the same periods.

133 We collected data for each patient during the research period. We selected
134 hospitals that sent DPC data for more than 9 months each year to QIP
135 database.

136 All patients were aged ≤ 15 years and were diagnosed with asthma according to
137 the ICD-10 codes (J45.x, J46).

138

139 **Statistical analysis**

140 An interrupted time-series analysis (ITS), including segmented regressions,
141 was performed to evaluate the effect of the COVID-19 pandemic on
142 population-level admissions. We statistically tested the changes in admission
143 volume based on the discharge date after adjusting for seasonality through a
144 Fourier term. We compared the number of admissions per month based on the

145 discharge date, not the date of admission, because the DPC data were
146 generated after patients' discharge from hospitals. We hypothesize that
147 COVID-19 would impact the level change of admission volume immediately
148 after March 2020, as an implemented point. The Japanese government
149 declared a state of emergency and requested self-quarantine, social distancing,
150 and school closure. We classified the patients into three age groups: 0–2, 3–5,
151 and 6–15 years. These groups corresponded to nursery school for ages 0–2,
152 kindergarten for ages 3–5 years, elementary school for ages 6–12 years, and
153 junior high school for ages 12–15 years.

154 All analyses were computed using R statistical software (version 3.4.0), and a
155 two-sided significance level was fixed at 0.05.

156

157 **Results**

158 **Studied patients**

159 Table 1 shows the patients' characteristics. We identified 10,481 in-patient
160 cases in 67 hospitals and 258,911 out-patient cases from 180 hospitals, who
161 were diagnosed with asthma. The median age was 2 years (IQR 1, 5 years),
162 and the most common age category was 0–2 years in inpatients. The median

163 age was 5 years (IQR 3, 9 years), and the most common age category was
164 6–11 years in outpatients. The number of males was much bigger than females
165 in both inpatients and outpatients. The median value of the length of stay for
166 each month was 5 days (IQR 4, 6) during the study period. The proportion of
167 patients with asthma who visited emergency departments from July 2019 to
168 June 2020 decreased by more than 30% compared to that from July 2018 to
169 June 2019.

170

171 **Asthma patients during the COVID-19 pandemic**

172 Figure 1 shows the number of inpatients between July 2019 and June 2020.
173 There was a seasonal increase from March to June 2019. However, the number
174 of inpatients from March to June 2020 decreased (Figure 1 a)). Figure 1 b)
175 shows the results of the interrupted time-series analysis. The results showed a
176 marked reduction in the number of inpatients from March 2020 to June 2020;
177 the reduced number of patients during this period was estimated to be 232
178 ($P=0.0012$). Among the analyses for each age category, the number of
179 inpatients aged ≤ 3 years between July 2019 and June 2020 showed a
180 statistically significant decrease compared to that between July 2018 and June

181 2019. The number of inpatients of the other age categories also showed
182 decreasing trends between July 2019 and June 2020 compared to that between
183 July 2018 and June 2019 (Figure 2 a)–c)).

184 The number of patients who were complicated with an infection showed a
185 statistically significant decrease between July 2019 and June 2020 compared
186 to that between July 2018 and June 2019, especially for patients aged ≤ 3 years
187 (Figure 2 d)–f)). There was a statistically significant decrease in the number of
188 outpatient cases between July 2018 to June 2019 and July 2019 to June 2020
189 (Figure 1c), d)).

190

191 **Trends for the prescription of inhalers**

192 The prescription number of both inhalers and nebulizers for inpatients
193 decreased during the COVID-19 pandemic. Also, the proportion of nebulizers
194 decreased by more than that of metered-dose inhalers. (Figure 3)

195

196 **Discussion**

197 This study demonstrated the trends of asthma in the pediatric population by
198 using a large-scale administrative database. Our study had three major
199 findings.

200 First, pediatric patients with moderate to severe asthma who needed
201 hospitalization dramatically decreased during the COVID-19 pandemic.

202 Moreover, infant patients controlled their asthma attacks more than school-age
203 children. There were several reasons for this situation. One reason for asthma

204 is an infection⁷; school closure and 'voluntary lockdown' may have influenced

205 the children's disease. The most common route of infection is contact among

206 children and is well known. Besides, the Japanese government convinced

207 businessmen to stay and work at home during the 'voluntary lockdown' starting

208 in April ⁸. Previous reports have shown that adherence improved during

209 lockdown for the COVID-19 pandemic⁹. Besides, PM2.5 was one of the

210 environmental risk factors that decreased in several areas, including India,

211 China, England, and The United States during lockdown. Lockdown caused a

212 reduction in traffic volume, including cars, airplanes, and trains, which resulted

213 in decreased environmental risk factors, including PM2.5, CO₂, and O₃¹⁰¹¹¹².

214 Second, the number of outpatients during the pandemic decreased compared
215 to that before the pandemic. Most outpatients controlled their asthma, so it is
216 possible that the patient's parents avoided a hospital visit. These hospital
217 avoidances in Japan were similar to other countries¹³. Previous reports have
218 stated that online or telephone health care services increased in European
219 countries¹⁴. Online or telephone health care services could have been provided
220 in Japan; however, there were few cases using online or telephone health care
221 services in our study (data not shown).

222 Third, doctors prescribed nebulizers more than metered-dose inhalers. The
223 Japanese Society of Pediatric Allergy and Clinical immunology recommended
224 using a metered-dose inhaler rather than a nebulizer in March 2020, because a
225 nebulizer can spread aerosol on caregivers and medical staff. The guideline
226 has not infiltrated sufficiently to all hospitals and medical staff during a short
227 period, and infant patients cannot use a metered-dose inhaler.

228 Our study had several limitations. QIP hospitals represented a limited number
229 of hospitals in Japan. Therefore, it is difficult to generalize our results to
230 nationwide pediatric asthma patients. However, a previous study¹⁵ for adult's
231 asthma patients showed similar results to ours. Therefore, we consider that our

232 findings also have validity for inpatients. Although most outpatients with asthma
233 usually visit clinics, acute hospitals such as QIP hospitals treat patients who
234 have other comorbidities or follow the acute phase for asthma. Finally, we had
235 no data about air pollution in Japan.

236

237 **Conclusions**

238 We found that the number of pediatric asthma patients did not increase due to
239 respiratory infections such as COVID-19. These results were supported by
240 political inventions such as school closure and social distancing. In addition,
241 infant patients controlled their asthma attacks more than school-age children.
242 We need to continue the research into trends of pediatric asthma patients after
243 the COVID-19 pandemic in Japan.

244

245 **Acknowledgments**

246 This study was supported by JSPS KAKENHI Grant Number JP19H01075 from
247 the Japan Society for the Promotion of Science and by the GAP Fund Program
248 of Kyoto University to Yuichi Imanaka. The funders played no role in the study

249 design, data collection and analysis, decision to publish, or preparation of the
250 manuscript.

251

252 **Declaration of interests**

253 We declare no competing interests.

254

255

256

257

258 **Figure legends**

259 Figure 1. Asthma patients during the COVID-19 pandemic. a) Trends of cases of
260 inpatients between July 2018 to June 2019 and July 2019 to June 2020. b) An
261 interrupted time-series (ITS) analysis for inpatients. The reduced number of
262 patients during this period was estimated to be 232 ($P=0.0012$). c) Trends of
263 cases of outpatients between July 2018 to June 2019 and July 2019 to June
264 2020. d) ITS analysis for outpatients. The reduced number of patients during this
265 period was estimated to be 2,975 ($P=0.0010$).

266 Figure 2. Asthma inpatients during the COVID-19 pandemic for each age

267 category. a) An interrupted time-series (ITS) analysis for patients aged <3 years.
268 The reduced number of patients during this period was estimated to be 155
269 ($P<0.001$). b) ITS analysis for patients aged 3–5 years. The reduced number of
270 patients during this period was estimated to be 20 ($P=0.118$). c) ITS analysis for
271 patients aged ≥ 6 years. The reduced number of patients during this period was
272 estimated to be 36 ($P=0.164$). d) ITS analysis for patients aged <3 years who
273 were complicated with an infection. The reduced number of patients during this
274 period was estimated to be 84 ($P<0.001$). e) ITS analysis for patients aged 3–5
275 years who were complicated with an infection. The reduced number of patients
276 during this period was estimated to be 39 ($P=0.086$). f) ITS analysis for patients
277 aged ≥ 6 years who were complicated with an infection. The reduced number of
278 patients during this period was estimated to be 14 ($P=0.139$).

279 Figure 3. Trends for the prescription of inhalers. The proportion of nebulizers
280 decreased by more than that of metered-dose inhalers.

281 **Table 1 Patients characteristics**

282 **a) In-patient characteristics**

	Total period	July 1, 2018 to June 30, 2019	July 1, 2018 to June 30, 2020
Number of patients	10,481	6,245	4,236
(Special vigilance area)	(5,929)	(3,473)	(2,456)
Infectious disease medical institution	28	28	28
Median age (IQR)	2 (1, 5)		
0–2	4,307	2,698	1,825
3–5	2,563	1,574	1,110
6–11	1,582	999	667
12–15	241	142	111
Sex			
Male	5,190		
Female	3,354		
Average length of stay (IQR)	5 (4, 6)		
Urgency admission (ambulance)	10,287 (937)	6,144 (523)	4,143 (414)
Intensive care unit admission	39	18	21

283

284

285

b) Out-patient characteristics

	Total period	July 1, 2018 to June 30, 2019	July 1, 2018 to June 30, 2020
Number of visited patients	258,911	147,321	111,590
Hospitals in special vigilance area	98	94	91
Infectious disease medical institution	42	42	41
Median age (IQR)	5 (3, 9)		
0–2	12,664	8,766	5,988
3–5	12,934	9,016	7,061
6–11	14,452	10,751	8,806
12–15	5,305	3,903	3,260
Sex			
Male	23,922		
Female	16,476		

286

287 Reference

- 288 1. Dong E, Du H, Gardner L. An interactive web-based dashboard to track
289 COVID-19 in real time. *Lancet Infect Dis.* 2020;20(5):533-534.
290 doi:10.1016/S1473-3099(20)30120-1
- 291 2. Tsutomu Watanabe; Tomoyoshi Yabu. Japan's Voluntary Lockdown.
292 *Covid Econ.* 2020;46(1):1-31.
- 293 3. Arakawa H, Hamasaki Y, Kohno Y, et al. Japanese guidelines for
294 childhood asthma 2017. *Allergol Int.* 2017;66(2):190-204.
295 doi:10.1016/j.alit.2016.11.003
- 296 4. Levin M, Ansotegui IJ, Bernstein J, et al. Acute asthma management
297 during SARS-CoV2-pandemic 2020. *World Allergy Organ J.*
298 2020;13(5):100125. doi:10.1016/j.waojou.2020.100125
- 299 5. Ministry of Health L and W. [Reports of a survey, "Discharged Patients
300 Survey," for assessing the effects of introducing DPC, 2018]. Accessed
301 March 23, 2020.
302 https://www.mhlw.go.jp/stf/shingi2/0000196043_00003.html.
- 303 6. Ministry of Health L and W. [Dynamic Survey of Medical Institutions and
304 Hospital Report, 2018] [Internet]. Accessed March 23, 2020.

- 305 <https://www.mhlw.go.jp/toukei/saikin/hw/iryosd/m18/is1802.html>.
- 306 7. Bush A. Pathophysiological Mechanisms of Asthma. *Front Pediatr*.
- 307 2019;7:68. doi:10.3389/fped.2019.00068
- 308 8. Chavasse R, Almario A, Christopher A, Kappos A, Shankar A. The Indirect
- 309 Impact of COVID-19 on Children With Asthma. *Arch Bronconeumol*.
- 310 Published online August 2020. doi:10.1016/j.arbres.2020.07.003
- 311 9. Taquechel K, Diwadkar AR, Sayed S, et al. Pediatric Asthma Health Care
- 312 Utilization, Viral Testing, and Air Pollution Changes During the
- 313 COVID-19 Pandemic. *J allergy Clin Immunol Pract*. Published online
- 314 August 2020. doi:10.1016/j.jaip.2020.07.057
- 315 10. Dhaka SK, Chetna, Kumar V, et al. PM(2.5) diminution and haze events
- 316 over Delhi during the COVID-19 lockdown period: an interplay between
- 317 the baseline pollution and meteorology. *Sci Rep*. 2020;10(1):13442.
- 318 doi:10.1038/s41598-020-70179-8
- 319 11. Chauhan A, Singh RP. Decline in PM(2.5) concentrations over major cities
- 320 around the world associated with COVID-19. *Environ Res*.
- 321 2020;187:109634. doi:10.1016/j.envres.2020.109634
- 322 12. Dutheil F, Baker JS, Navel V. COVID-19 as a factor influencing air

- 323 pollution? *Environ Pollut.* 2020;263(Pt A):114466.
- 324 doi:10.1016/j.envpol.2020.114466
- 325 13. Ciofi Degli Atti ML, Campana A, Muda AO, et al. Facing SARS-CoV-2
- 326 Pandemic at a COVID-19 Regional Children's Hospital in Italy. *Pediatr*
- 327 *Infect Dis J.* 2020;39(9):e221-e225. doi:10.1097/INF.0000000000002811
- 328 14. Wosik J, Fudim M, Cameron B, et al. Telehealth transformation:
- 329 COVID-19 and the rise of virtual care. *J Am Med Inform Assoc.*
- 330 2020;27(6):957-962. doi:10.1093/jamia/ocaa067
- 331 15. Abe K, Miyawaki A, Nakamura M, Ninomiya H, Kobayahi Y. Trends in
- 332 Hospitalizations for Asthma During the COVID-19 Outbreak in Japan. *J*
- 333 *allergy Clin Immunol Pract.* Published online October 2020.
- 334 doi:10.1016/j.jaip.2020.09.060
- 335

Figure 1

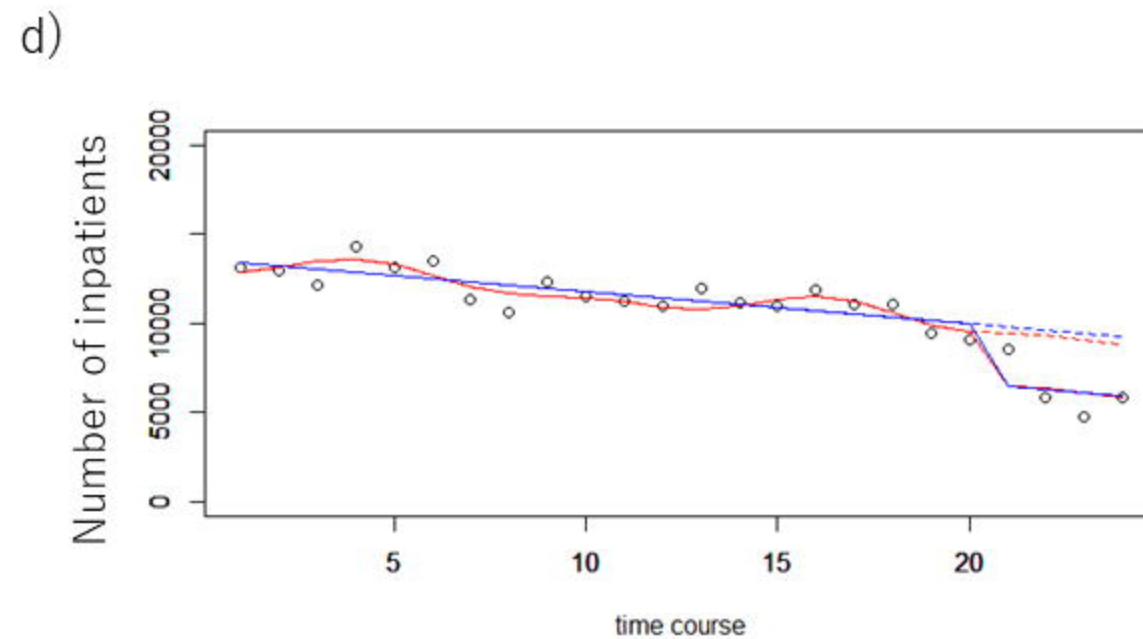
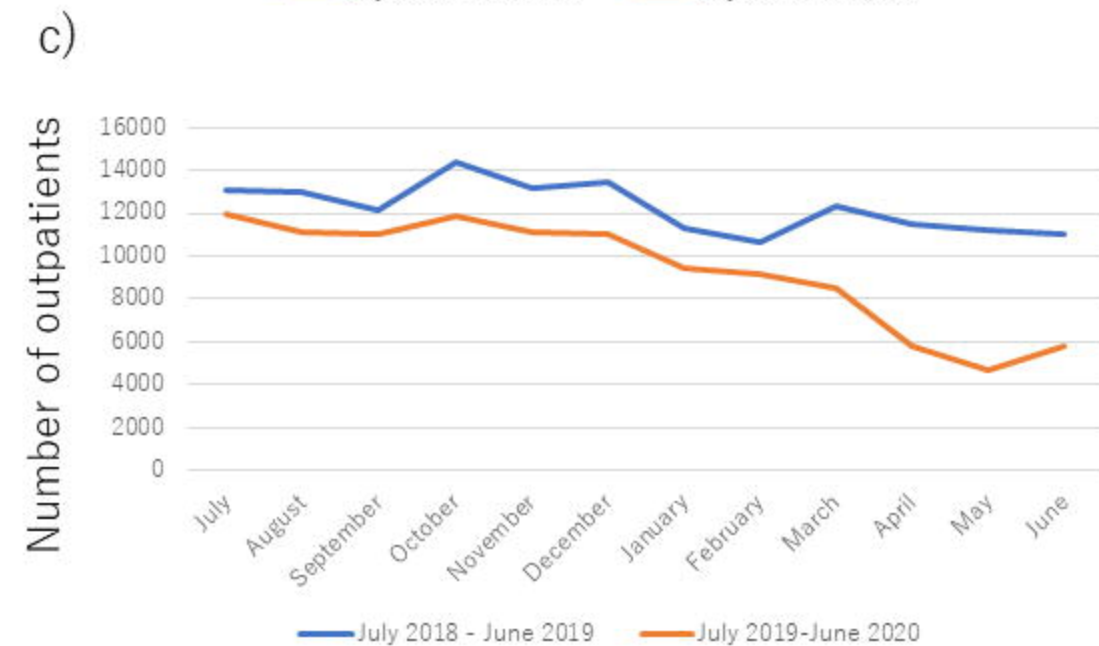
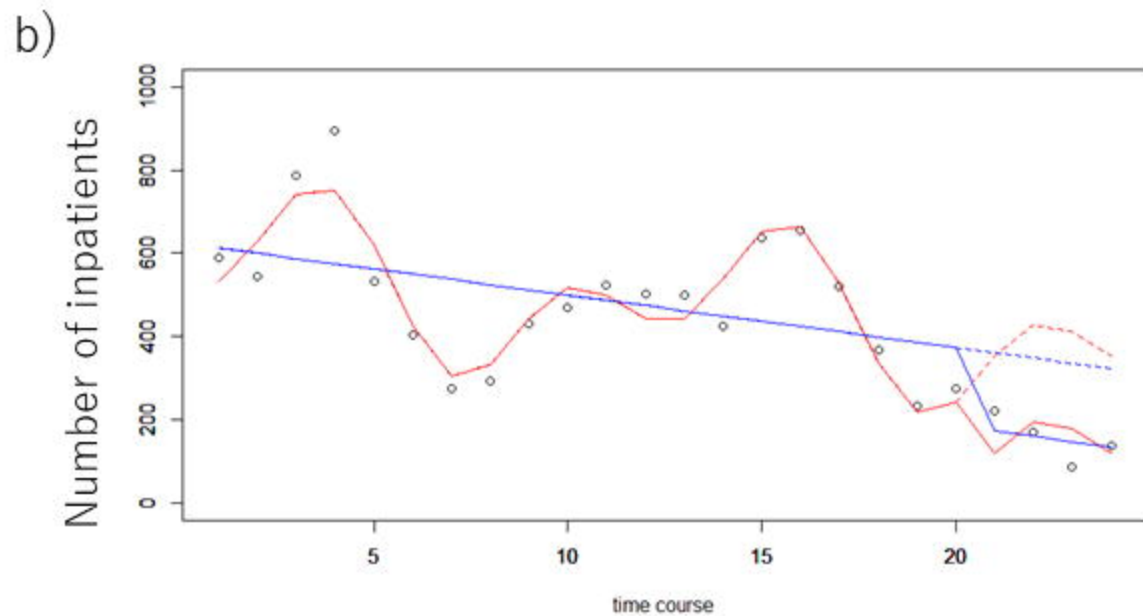
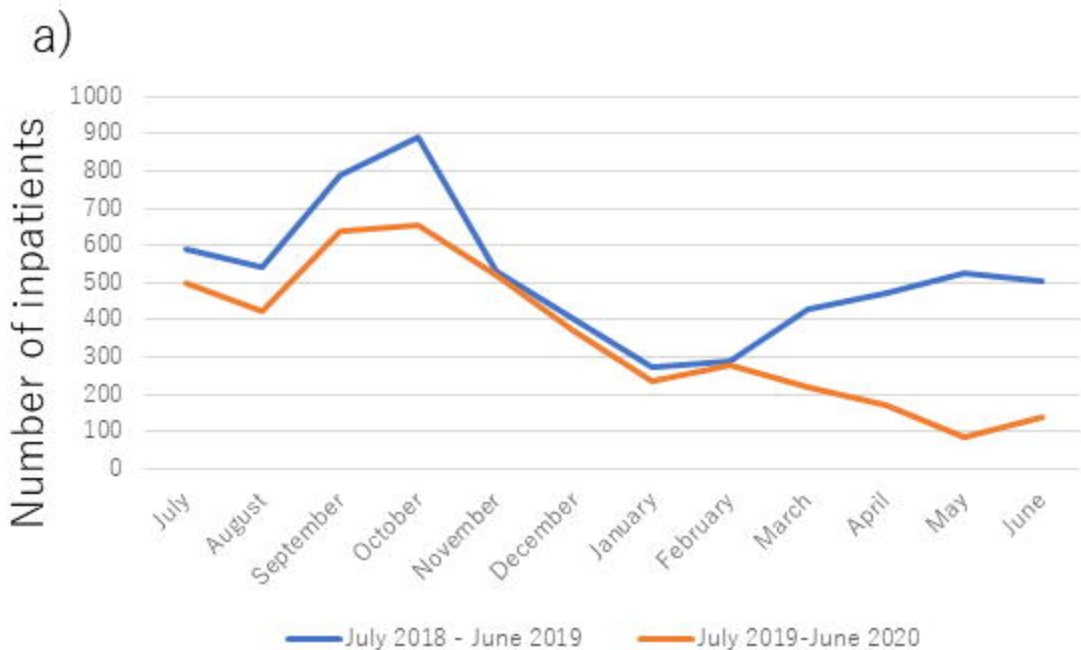
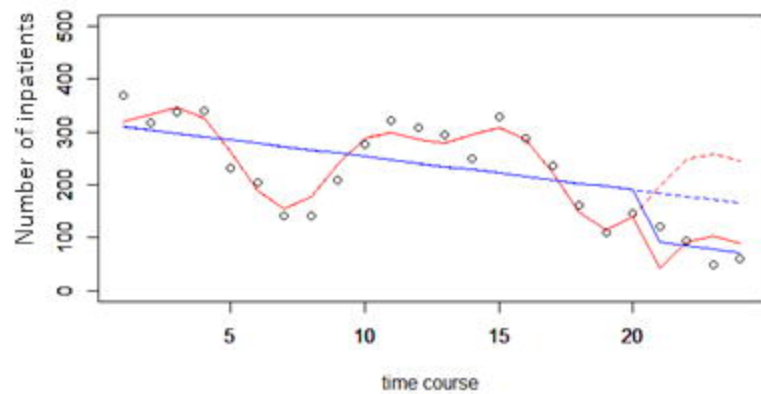
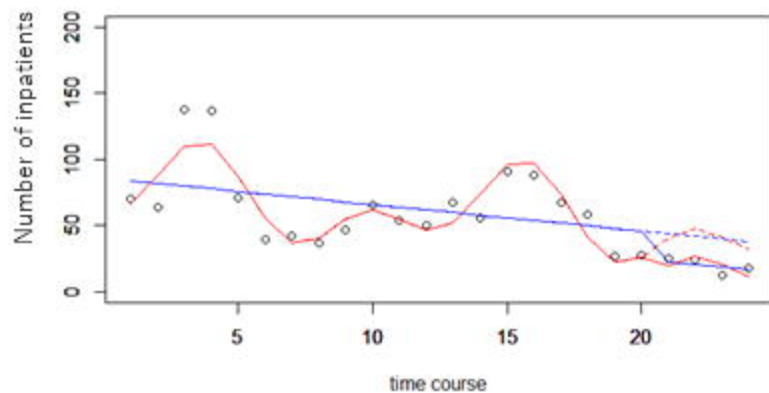


Figure 2

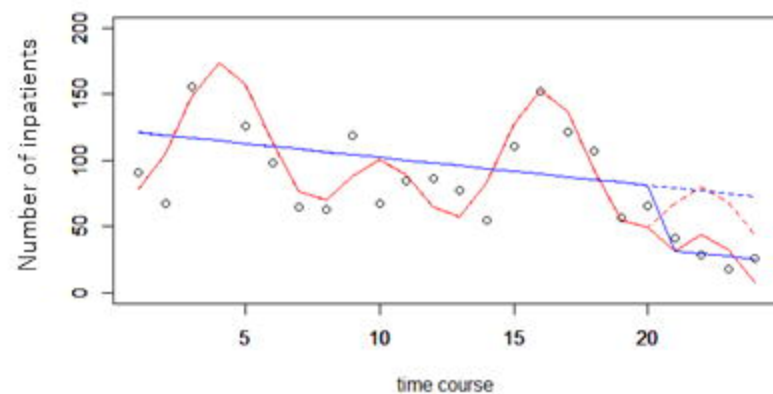
a)



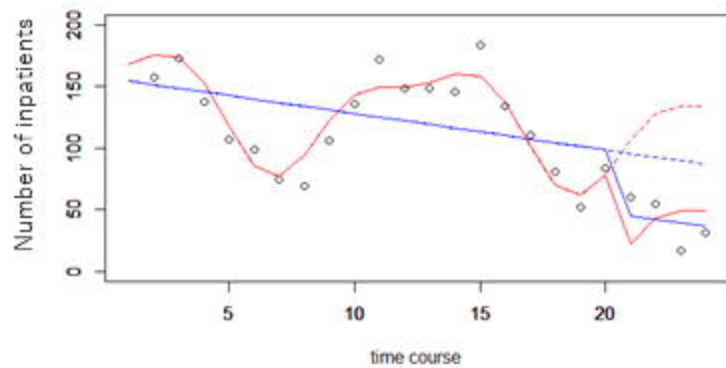
b)



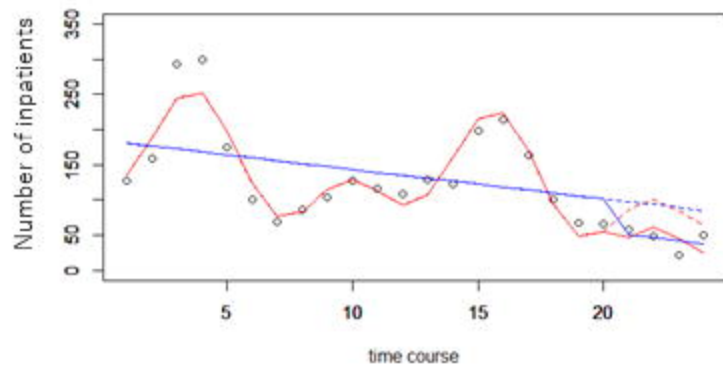
c)



d)



e)



f)

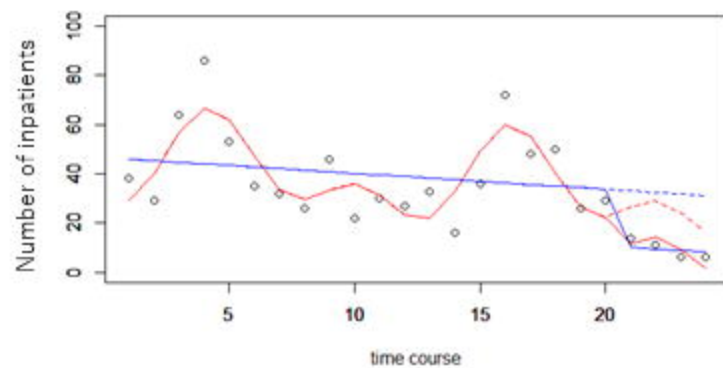
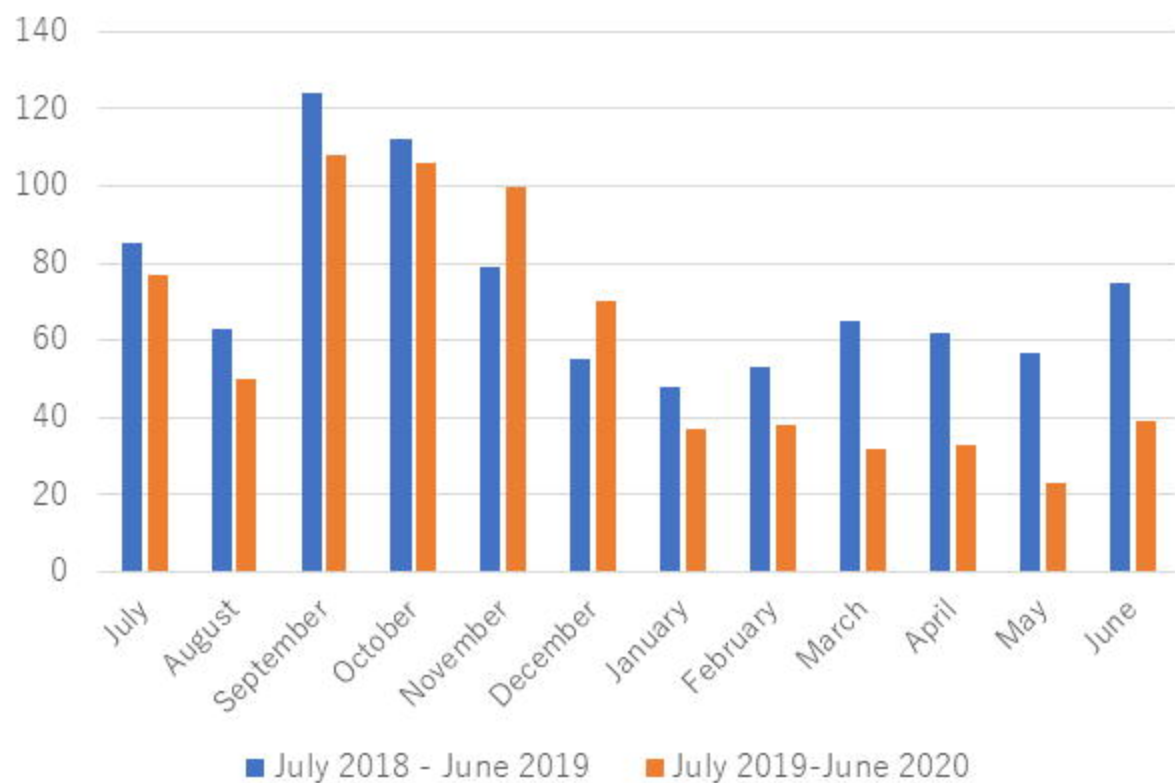


Figure 3

The number of prescriptions of MDI



The number of prescriptions of nebulizers

