

Threatening second wave of COVID-19 is imminent: A deep learning perspective

Khondoker Nazmoon Nabi^a, Md Toki Tahmid^b, Abdur Rafi^b, Muhammad Ehsanul Kader^b, Md. Asif Haider^b

^a*Department of Mathematics, Bangladesh University of Engineering and Technology (BUET), Dhaka, Bangladesh*

^b*Department of Computer Science and Engineering, Bangladesh University of Engineering and Technology (BUET), Dhaka, Bangladesh*

Abstract

When the entire world is waiting restlessly for a safe and effective COVID-19 vaccine that could soon become a reality, numerous countries around the globe are grappling with unprecedented surges of new COVID-19 cases. As the number of new cases is skyrocketing, pandemic fatigue and public apathy towards different intervention strategies are posing new challenges to the government officials to combat the pandemic. Henceforth, it is indispensable for the government officials to understand the future dynamics of COVID-19 flawlessly in order to develop strategic preparedness and resilient response planning. In light of the above circumstances, probable future outbreak scenarios in Bangladesh, Brazil, India, Russia and the United Kingdom have been sketched in this study with the help of four deep learning models: long short term memory (LSTM), gated recurrent unit (GRU), convolutional neural network (CNN) and multivariate convolutional neural network (MCNN). In our analysis, CNN algorithm has outperformed other deep learning models in terms of validation accuracy and forecasting consistency. Importantly, CNN model showed clear indications of imminent second wave of COVID-19 in the above-mentioned countries. It has been unearthed in our study that CNN can provide robust long term forecasting results in time series analysis due to its capability of essential features learning, distortion invariance and temporal dependence learning. However, the prediction accuracy of LSTM algorithm has been found to be poor as it tries to discover seasonality and periodic intervals from any time series dataset, which were absent in our studied countries. Our results enlighten some surprising results that the studied countries are going to witness dreadful consequences of second wave of COVID-19 in near future. Quick responses from government officials and public health experts are required in order to mitigate the future burden of the pandemic in the above-mentioned countries.

Keywords: COVID-19; Second wave; Time series forecasting; Deep learning; Convolutional neural network (CNN); Long short term memory (LSTM); Gated Recurrent Unit (GRU); Multivariate convolutional neural network (MCNN)

*Corresponding author: khnabi@math.buet.ac.bd (Khondoker Nazmoon Nabi)

1 1. Introduction

2 As the northern hemisphere moves into winter, many countries in the world are grappling with sudden
3 surge of COVID-19 cases. As everyone is waiting for a safe, effective and widely available COVID-19 vaccine,
4 new spikes of COVID-19 infections are exacerbating the overall scenario. As the crisis deepens, prudent
5 experts have already warned about the gruesome nature of second wave of COVID-19 as the number of
6 new COVID-19 cases is skyrocketing at unprecedented levels. In the face of second wave of infection,
7 pandemic fatigue and public apathy towards various intervention strategies have prompted people to act
8 impetuously, which are imposing new challenges to the government officials. Different non-pharmaceutical
9 intervention strategies such as wearing of efficacious face coverings, closure of educational institutions, strict
10 travel restrictions and strict containment measures in order to flatten the epidemic curve. In addition,
11 mass level testing and tracing programme are also indispensable for breaking continuous transmission chain.
12 Government officials need to ensure facilitated access to affordable rapid tests. With the help of effective
13 case detection, aggressive contact tracing and local follow-up and support, the probable risks of imminent
14 second wave of COVID-19 in numerous countries can be mitigated.

15 Different mathematical and statistical paradigms have performed well in predicting the epidemic scenario
16 in different countries since the outbreak of COVID-19. Multiple studies [1, 2, 3, 4, 5, 6] have provided
17 considerable insights to gain a deeper understanding about the transmission dynamics of COVID-19. In
18 the absence of a safe, effective and widely available COVID-19 vaccine, some promising studies [7, 8, 9, 10]
19 have enlightened the importance of different non-pharmaceutical intervention strategies in order to promote
20 effective public health policies in different worst-hit countries when battling against this pandemic. However,
21 it is often really challenging to incorporate all essential real life interactions in a single mathematical model
22 [11, 12]. Hence, results are generally based on numerous assumptions and often fail to predict the true
23 outbreak scenario. Nevertheless, a synergy of explicit mathematical models and deep learning networks could
24 be a great way to achieve robust forecasting results in time series analysis [13]. However, this is still an
25 emerging research area which requires more study and experiments.

26 Deep learning algorithms play a vital role in the analysis and prediction of different epidemic outbreak
27 scenarios. These methods can often provide robust forecasting results which can be used by government
28 officials to deploy appropriate intervention strategies with a view to quelling the spread of any highly trans-
29 missible virus. Wang *et al.* used LSTM model in their study [14] to forecast the new COVID-19 cases for
30 120 days horizon. However, in our study, we have found that LSTM model has failed to capture the right
31 trend with promising accuracy. For instance, it estimated continuous downward trends in Iran, Russia and
32 Peru. However, it is evident that these countries have already encountered with the hit of second wave of
33 COVID-19. In another study [15], Arora *et al.* developed a stacked forecasting model named as "Convolut-
34 tional LSTM" using the concepts of recurrent neural network and convolutional neural network to predict

35 the daily new cases in India. However, that model worked well for a forecasting horizon of only 3 days. This
36 suggests that LSTM architecture does not provide much insights about long term time series forecasting
37 with commendable accuracy. Long term forecasting is undoubtedly a crucial part in terms of policy making
38 and strategic planning. From another point of view, LSTM algorithm works well with large dataset, when it
39 is required to find seasonality in time series analysis. However, with relatively less data points it fails to find
40 any pattern and makes the model too sensitive for forecasting. In such case, a CNN architecture performs
41 well in learning local data patterns and extracting essential features from datasets.

42 In light of the above concerns, a rigorous comparative study of five deep learning algorithms: long short
43 term memory (LSTM), gated recurrent unit (GRU), convolutional neural network (CNN) and multivariate
44 convolutional neural network (MCNN) has been presented to forecast the number of daily new COVID-19
45 cases in Bangladesh, Brazil, India, Russia and the UK. Mean absolute percentage error (MAPE) and nor-
46 malised root mean square error (nRMSE) have been used as performance metrics to evaluate the robustness
47 of model forecasting results. Results based on these metrics suggest that CNN perform better than all other
48 deep learning models. Considering all the scenarios, CNN has turned out to be the best forecasting model
49 due to its power of feature learning. Two deep learning methods: CNN and multivariate CNN have been
50 proposed for forecasting as both methods have shown promising consistency and prediction accuracy in terms
51 of long term forecasting. Importantly, a strong probability of forthcoming second wave of COVID-19 has
52 been unearthed in above-mentioned countries. Robust planning and strategic management can be ensured
53 in these countries based on our forecasting results to avoid disasters in healthcare systems.

54 The entire chapter is organized as follows. Materials and methods are presented in Section 2. In section
55 3, forecasting results have been discussed using real-time COVID-19 data of Bangladesh, Brazil, Russia,
56 India and the UK. The paper ends with some insightful experimental results found in this study.

57 **2. Materials and methods**

58 In this paper, Deep learning models (CNN, LSTM, GRU, multivariate CNN) are used to forecast new
59 cases using COVID-19 dataset for five countries including Bangladesh, Brazil, India, Russia and the United
60 Kingdom. For Brazil, India, Russia and the United Kingdom data of 291 days are used for training and
61 data of 33 days are used for validation. In the case of Bangladesh, training data consists of data of 234 days
62 and validation data consists of 27 days. The forecast is made for 40 days. The performance of the models
63 is evaluated using MSE, nRMSE and MAPE. Models are implemented and trained using Keras module of
64 TensorFlow on Google Collaboratory platform.

65 *2.1. Data sources*

66 We have collected the dataset from data up to 18 November, 2020 for Bangladesh, Brazil, India, Russia
67 and the UK from a trusted online repository developed and maintained by Johns Hopkins University [16].

68 We have extracted the daily new cases and new deaths data for the above-mentioned countries using that
69 repository.

70 2.2. Methods

71 In this study, specialized four deep learning algorithms: convolutional neural network (CNN), long short
72 term memory (LSTM), gated recurrent unit (GRU) and multivariate convolutional neural network (MCNN)
73 have been applied to understand the future transmission dynamics of COVID-19. As the COVID-19 dataset
74 fluctuates so frequently, moving average method has been used to smoothen our dataset. Dataset for each
75 country was considered as a time series. Our prediction is performed on the moving averaged data. We
76 used rolling mechanism [14] by incorporating windowed data in the time series. In some recent research
77 articles, fixed window size of 3 was taken. Thus, that model will take previous 3 days data to predict the
78 value of next day. In our study, we have used variations of windowed time series. By trial-and-error method,
79 we have chosen the best value of window and assigned each country with corresponding best window size.
80 For COVID-19 time series prediction, recurrent neural networks and their sophisticated variations named
81 LSTM and GRU are widely used. However, the use of convolutional neural network (CNN) in time series
82 analysis is not widespread [17]. In this study, CNN performed very well on both training and validation data
83 as we hypertuned the parameter values. It turns out that CNN worked better than LSTM and GRU on
84 both training and validation data. For forecasting with MCNN, daily confirmed cases and daily deaths have
85 been used to predict the number of newly confirmed cases for the next day. To the best of our knowledge,
86 multivariate convolutional neural network time series analysis is not used before in any study for COVID-19
87 forecasting. We have listed the parameter values for each model in Tab. 1. We have used root mean squared
88 error (RMSE) as our loss function during the training time. Normalized root mean squared error (nRMSE)
89 and mean average percentage error (MAPE) are used as insightful metrics to evaluate model prediction
90 accuracy and to compare performance between models. We have also incorporated an error boundary for
91 our forecasting zone, where we demonstrated the possible standard deviation from our predicted data.

92 2.2.1. Moving average

Moving average is one of the most used techniques for understanding trends in time series analysis. It is
a way to smooth out fluctuations in time series data and to help distinguish between noise and trends in a
dataset. Often in spite of having clear trends and patterns, there might be huge fluctuations found in the
dataset, which may cause any forecasting model to perform significantly poor. In that case, the value of any
day is replaced by the average of some of its neighboring values. Mathematically, a simple moving average
is the mean of the previous n data:

$$P(n) = \frac{1}{k} \sum_{i=n-k}^{n-1} P(i)$$

It is made available under a [CC-BY-NC-ND 4.0 International license](https://creativecommons.org/licenses/by-nc-nd/4.0/) .

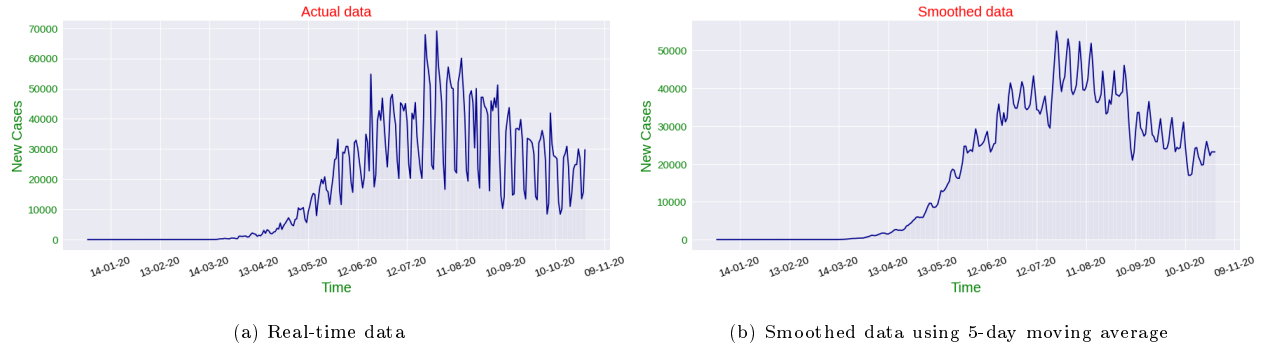


Figure 1: Comparative scenario analysis between real-time data and smoothed real-time data

, where k is the previous number of days for determining the i^{th} value. To ensure that the variation in mean corresponds to the variation of data, we have taken the mean of the values of any particular date, the previous two days and the next two days to calculate the moving averaged value of that day Fig. 1. Mathematically,

$$P(n) = \frac{P(n-2) + P(n-1) + P(n) + P(n+1) + P(n+2)}{5}$$

93 Here, $P(n)$ is the value for n^{th} day.

94 2.3. Deep learning methods

95 2.3.1. Convolutional neural network (CNN)

96 Convolutional neural network (CNN) is a more generalized version of multilayer perceptron [18]. However,
 97 CNN architecture causes over-fitting in the model. Each neuron in the one convolutional layer is connected
 98 only to neurons located within a small rectangle in the previous layer. This architecture allows the network
 99 to concentrate on low-level features in the first hidden layer Fig. 2, then assemble them into higher-level
 100 features in the next hidden layer, and so on.

101 To use CNN in time series forecasting Fig. 3, we have used fixed window size of 20 on the smoothed data
 102 and used it as an input to our convolutional layer. Four convolutional layers are stacked to extract complex
 103 feature and patterns from the time series. Finally, one flatten layer and two dense layers are used to produce
 104 the necessary output. The last hidden layer consists of one neuron which outputs the next value for any set
 105 of given 20 days values.

106 2.3.2. Long short term memory (LSTM)

107 As traditional Artificial Neural Networks fail to provide desired accuracy while working with sequential
 108 data, Recurrent Neural Networks (RNN) or neural networks with loops come into play by maintaining a
 109 vector of activation for each time-step and carrying them forward Fig. 4. Although RNNs are much better
 110 in handling sequential data by connecting previous information to the present inputs, often there might

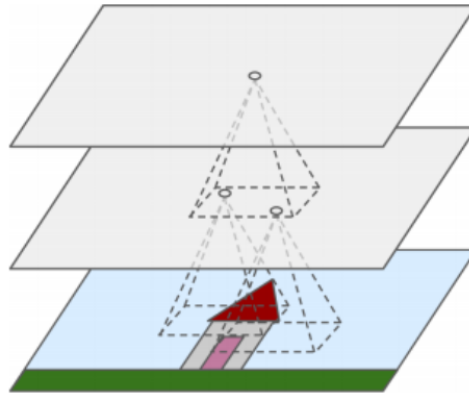


Figure 2: The concept of Convolutional Neural Network: Shrinking down data dimensions to extract most relevant features

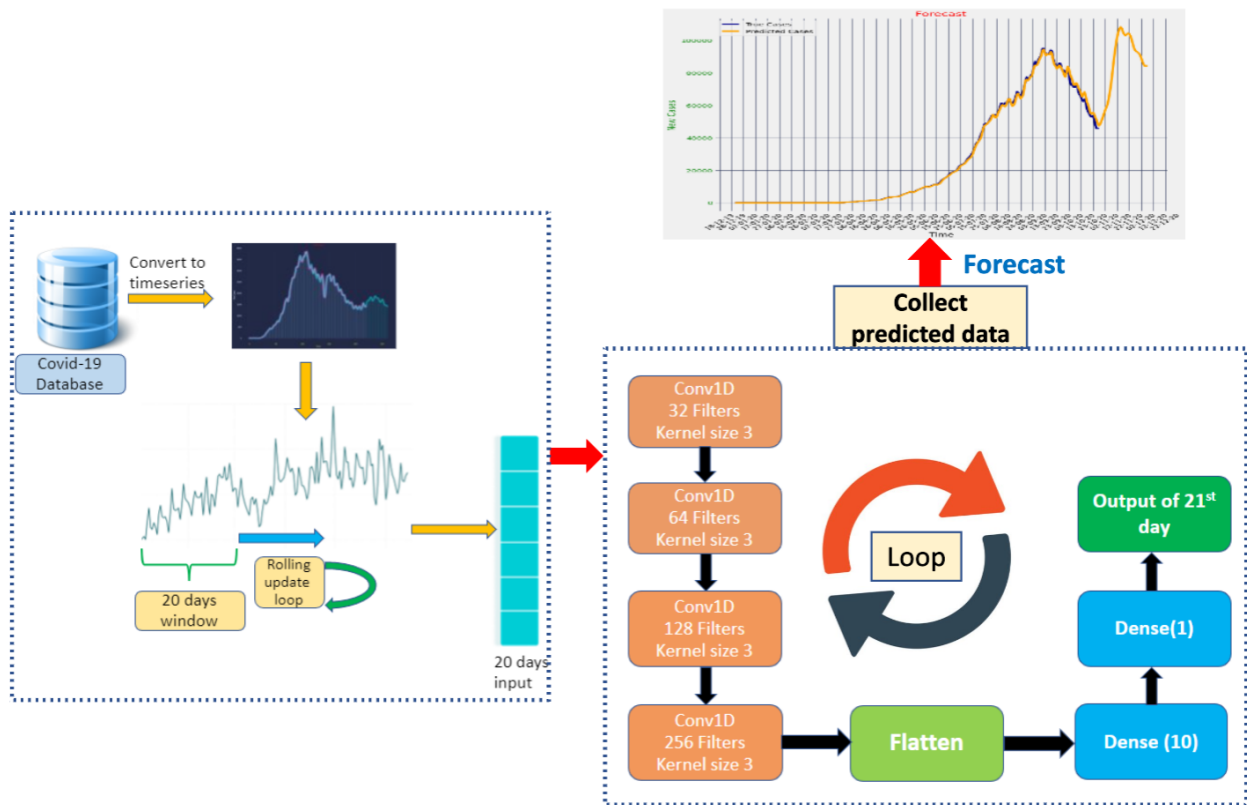


Figure 3: Convolutional Neural Network architecture used in this study

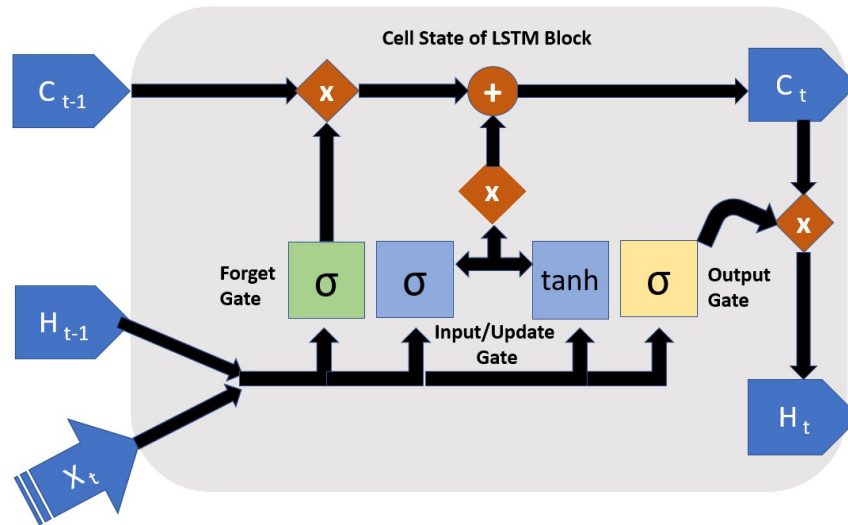


Figure 4: Internal architecture of LSTM network

111 be problems while training deeper models. Due to RNN's repetitive nature, parameter matrices related
112 to calculating the gradients, tend to shrink down exponentially during backpropagation, thus making the
113 model training process much slower and less effective. This phenomenon is known as Vanishing Gradient
114 problem. As a result, typical RNNs are found to be a poor option while practically dealing with this long-
115 term dependency. The LSTM or Long Short-Term Memory is a well-known variant of traditional RNNs,
116 that addresses this issue by effectively tackling long-term dependencies.

117 Structurally, each LSTM block in the network module consists of a set of carefully designed vectorized
118 operations between new inputs and previous outputs, along with the usage of mathematical functions like
119 sigmoid and tanh where necessary, instead of a single layer neural network. In short, LSTM block contains a
120 memory cell and three operational gates with their own weights and bias vectors through which, information
121 pass serially.

122 First of all, combination of current block input and previous activation values are passed through a
123 nonlinear sigmoid function to filter out which values to store and which values to forget or erase out, as
124 sigmoid function outputs just values in between 0 and 1. This layer is known as the Forget Gate.

125 Later on, another set of parameters in the Input/Update Gate are used to filter out the same combination
126 of activation from the previous layer and current block input, eventually to be used as the updated input.
127 Then the primary set of input is passed through a tanh (hyperbolic tangent) function to produce new
128 candidate values of the current block. Finally, the linear Vector-Matrix addition of the values from the
129 previous block, scaled by Forget Gate and the current candidate values scaled by the Input/Update Gate is

130 served as the final values of the current block.

131 Third, the final values of the current block are passed through another tanh activation layer and then
132 scaled by an Output Gate, consisting of another parameterized version of the initial combination of block
133 input and previous activations to produce the newly updated activations of the current block. Thus, using
134 sigmoid activations to decide what to forget and what to store in each block with respect to the previous
135 blocks, LSTM blocks can increase accuracy significantly. Mathematically,

$$F_t = \sigma(W_{fx}X_t + W_{fh}H_{t-1} + B_f) \quad (\text{Forget Gate}) \quad (1)$$

$$I_t = \sigma(W_{ix}X_t + W_{ih}H_{t-1} + B_i) \quad (\text{Input Gate}) \quad (2)$$

$$O_t = \sigma(W_{ox}X_t + W_{oh}H_{t-1} + B_o) \quad (\text{Output gate}) \quad (3)$$

$$\tilde{C}_t = \tanh(W_cX_t + W_cH_{t-1} + B_c) \quad (\text{Intermediate Cell State with Candidate Value}) \quad (4)$$

$$C_t = F_t \odot C_{t-1} + I_t \odot \tilde{C}_t \quad (\text{Cell State or Final Current Block Value}) \quad (5)$$

$$H_t = O_t \odot \tanh(C_t) \quad (\text{New State or New Block Input}) \quad (6)$$

136 Where, W and B are relevant weights and biases in respective gates associated with each LSTM block, and
137 X is the input vector for each block.

138 2.3.3. Gated Recurrent Unit (GRU)

139 GRU or Gated Recurrent Unit can be portrayed as a variant of LSTM and it has many similarities with
140 LSTM [19]. Like LSTM, GRU are also primarily used to solve the "Vanishing Gradient" problem found
141 in typical RNNs and thus improving the learning of long-term dependencies in the network. GRU blocks
142 also use tanh and sigmoid functions to compute necessary values. But unlike a LSTM block, a GRU block
143 doesn't have separate memory cells. This type of block also doesn't have separate Forget gate and the
144 Input/Update gate is responsible for controlling the flow of information. Because of these two structural
145 differences with LSTM, it has less parameters and the design of it is less complex, which eventually makes
146 it more computationally efficient and easier to train. tanh and sigmoid functions are used inside to compute
147 necessary values.

148 Other than Update gate, GRU blocks have Reset gate. Inside a GRU block, four values are computed,
149 these are - Update gate, Reset gate, candidate activation and output activation Fig. 5. Each gate and
150 candidate activation have their separate weights and biases. Along with their weights and biases, current
151 block input and previous activation values are used as input to compute these three values. In the first step,

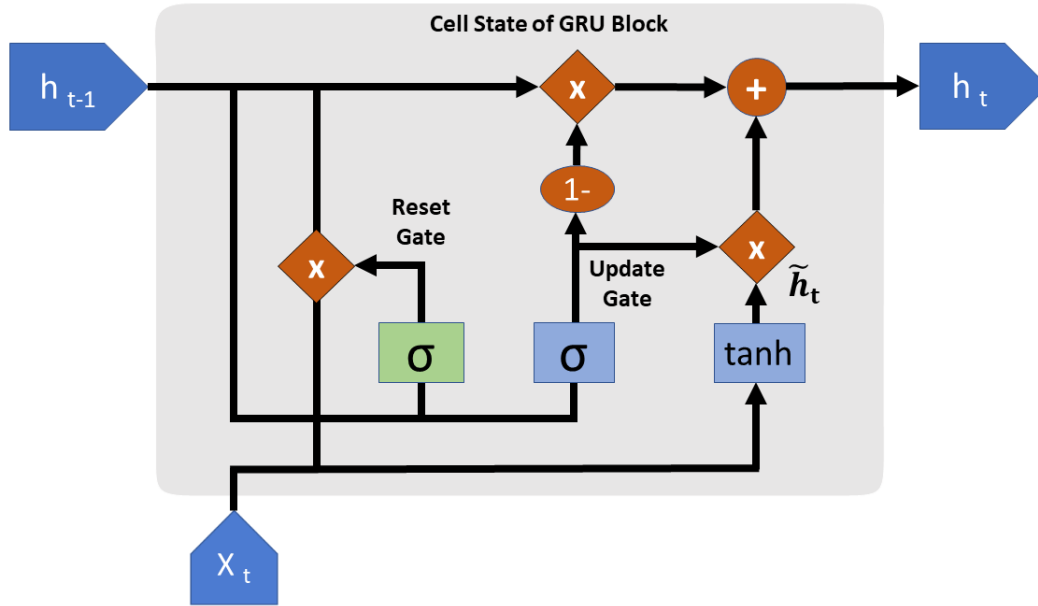


Figure 5: Internal architecture of GRU network

152 sigmoid function is used to calculate values of the gates.

$$U_t = \sigma(W_{ux}X_t + W_{uh}H_{t-1} + B_u) \quad (\text{Update Gate}) \quad (7)$$

$$R_t = \sigma(W_{rx}X_t + W_{rh}H_{t-1} + B_r) \quad (\text{Reset Gate}) \quad (8)$$

$$\tilde{H}_t = \tanh(W_{\tilde{h}x}X_t + W_{\tilde{h}h}(R_t \odot H_{t-1}) + B_{\tilde{h}}) \quad (\text{Candidate Activation}) \quad (9)$$

$$H_t = U_t \odot \tilde{H}_t + (1 - U_t) \odot \tilde{H}_{t-1} \quad (\text{Output Activation}) \quad (10)$$

153 Then, candidate activation is calculated by applying tanh function to a combination of input of Reset gate
154 value and previously mentioned inputs.

155 Finally, the linear vector addition of the values of candidate activation, scaled by Update gate and previous
156 activation values scaled by the result of subtraction between vector of ones and Update gate produces the
157 values of output activation.

158 2.3.4. Multivariate Convolutional Neural Network

159 In multivariate time series analysis, multiple features are provided as an input for any particular timestep
160 [20]. Along with the targeted feature, this method also predicts the values for other features used as an input.
161 In this study, we have used daily confirmed COVID-19 cases and daily confirmed COVID-19 deaths as our
162 multivariate features as we have observed strong correlation between their trends Fig. 6. LSTM networks
163 have previously been used for COVID-19 prediction using multivariate time series analysis [21]. However,

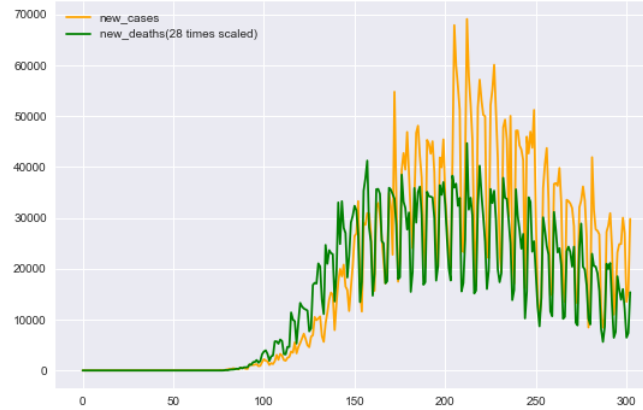


Figure 6: Correlation between new cases and new deaths. Here the 'new_deaths' data has been scaled 28 times to visualize the trend more clearly.

164 we are the first to implement CNN models for multivariate COVID-19 forecasting which provided us with a
165 promising result Tab. 2.

Normalized root mean squared error (nRMSE) and mean absolute percentage error (MAPE) have been implemented to understand relative performance of different deep learning models. Following are the formulas to determine the values of these metrics:

$$\text{nRMSE} = \frac{\sqrt{\frac{\sum_{i=1}^N (y_i - \hat{y}_i)^2}{N}}}{\bar{y}} \quad (11)$$

$$\text{MAPE} = \frac{\sum_{i=1}^N \frac{|y_i - \hat{y}_i|}{y_i}}{N} \times 100 \% \quad (12)$$

166 Here, y_i are the actual values, \hat{y}_i are the values predicted by the model and N is the number of observations.
167 In the nRMSE formula, \bar{y} is the mean of all the predicted values. As the difference between actual values
168 and predicted values are squared in nRMSE and absolute values are taken in MAPE, the problem of positive
169 and negative errors canceling each other out is avoided.

170 3. Results

171 In this analysis, we have used four deep learning architectures to forecast the new cases of India,
172 Bangladesh, Brazil, Russia, United Kingdom for next 40 days. We have summarized the values of normalized
173 root mean squared error train ($nRMSE_{train}$), normalized root mean squared error validation ($nRMSE_{val}$),
174 mean average percentage error train ($MAPE_{train}$), mean average percentage error validation ($MAPE_{val}$)

175 in Tab. 2. Along with new COVID-19 cases, we have also implemented our best validated CNN model to
 176 forecast new death cases for above countries with a forecasting horizon of 40 days.

177 In our study we have found that CNN performed the best in terms of consistency among all four deep
 178 learning models. In this section, study findings are summarized below.

Method	Parameter	Values
LSTM/GRU	Number of layers	2
	Number of units	{50, 20}
	Epochs	1000
	Batch size	300
	Learning rate	0.001
	Optimizer	Adam
	Loss function	MSE
CNN/Multivariate CNN	Number of Convolutional layers	4
	Number of Units in CNN layers	{32, 64, 128, 256}
	Number of Dense layers	2
	Number of Units in Dense Layers	{10, 1}
	Epochs	1000
	Batch size	300
	Learning rate	0.001
	Optimizer	Adam
	Loss function	MSE

Table 1: Model parameters

179 For Bangladesh, the multivariate CNN model has performed well in case of validation data ($nRMSE_{val}$
 180 = 0.026, $MAPE_{val}$ = 2.19%). It shows an increase in cases Fig. 9. Similarly, our CNN model with its
 181 promising score ($nRMSE_{val}$ = 0.03 and $MAPE_{val}$ = 2.54%) forecasts a gradual increase in cases with a
 182 peak of 4000 (95% CI : 3500 – 4500) new cases per day by mid-December. As both highly validated models
 183 are showing an increase, it is convenient to consider the socio-economic and seasonal effects. In Bangladesh,
 184 during December overall country temperature decreases, which lowers the humidity and as a consequence
 185 various flu like diseases may increase, and this condition supports our estimation. However, in case proper
 186 safety measures and a countrywide controlled lockdown is ensured, there is also a chance of a decrease in the
 187 number of new cases. In a country like Bangladesh with a high population density, a second wave of pandemic

It is made available under a [CC-BY-NC-ND 4.0 International license](https://creativecommons.org/licenses/by-nc-nd/4.0/) .

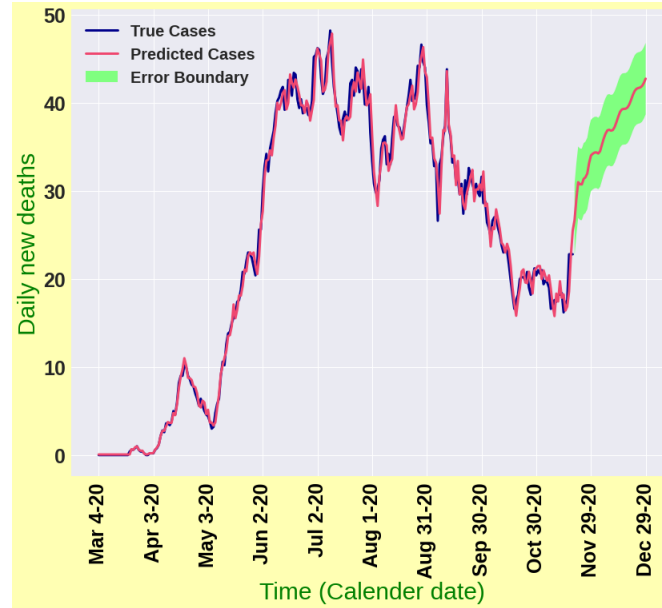


Figure 7: Forecasting results for daily death cases in Bangladesh

188 may result in devastating effects on countries socio-economic and health sector. Other two model's LSTM
189 ($nRMSE_{val} = 0.04$ and $MAPE_{val} = 3.94\%$) and GRU ($nRMSE_{val} = 0.04$ and $MAPE_{val} = 3.41\%$) also
190 estimates an increase in cases although their forecasting consistency is much sensitive than the previous two
191 models. Fig. 7 shows that daily deaths in Bangladesh is also projected to increase although the increasing
192 scale is not remarkably high according to our analysis with a peak of less than 50 new deaths per day.

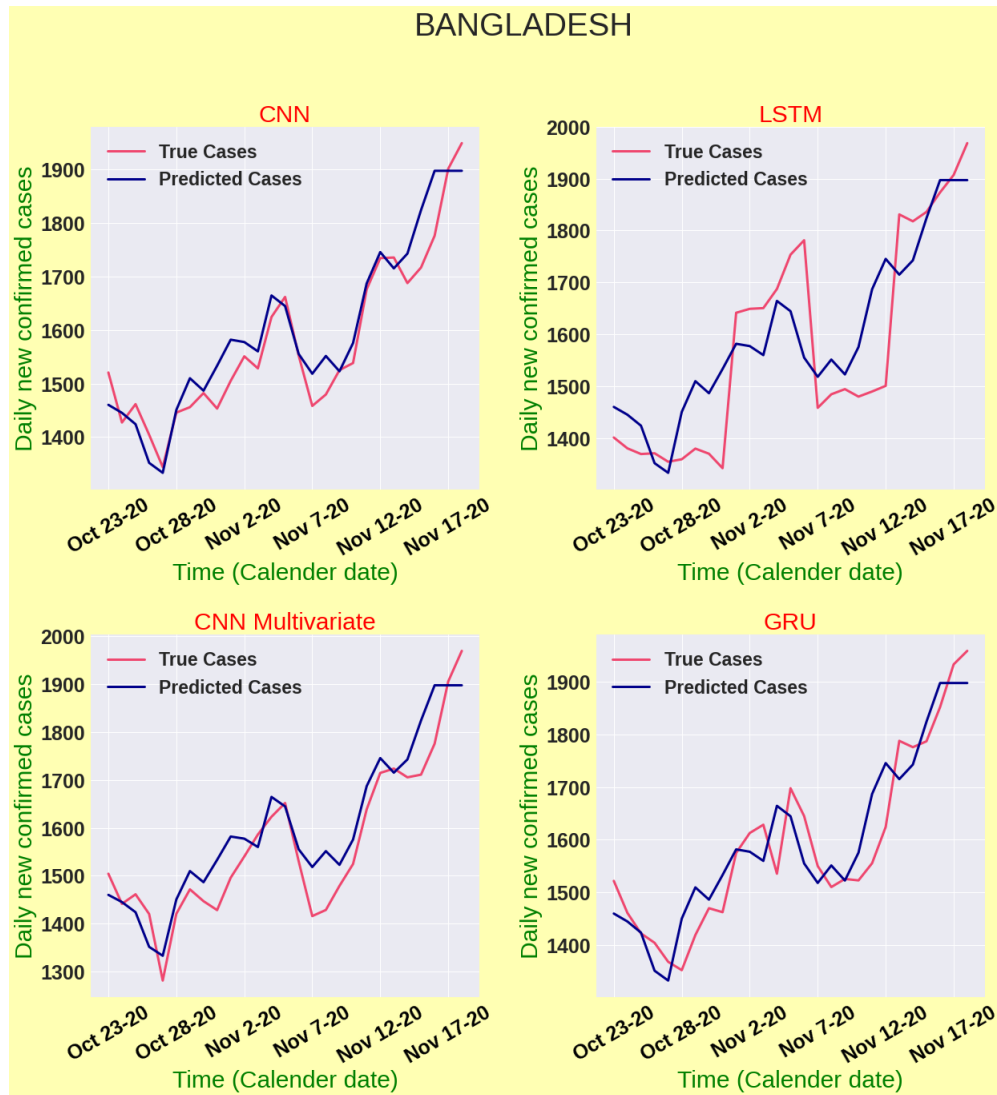


Figure 8: Model validation for Bangladesh

It is made available under a [CC-BY-NC-ND 4.0 International license](https://creativecommons.org/licenses/by-nc-nd/4.0/).

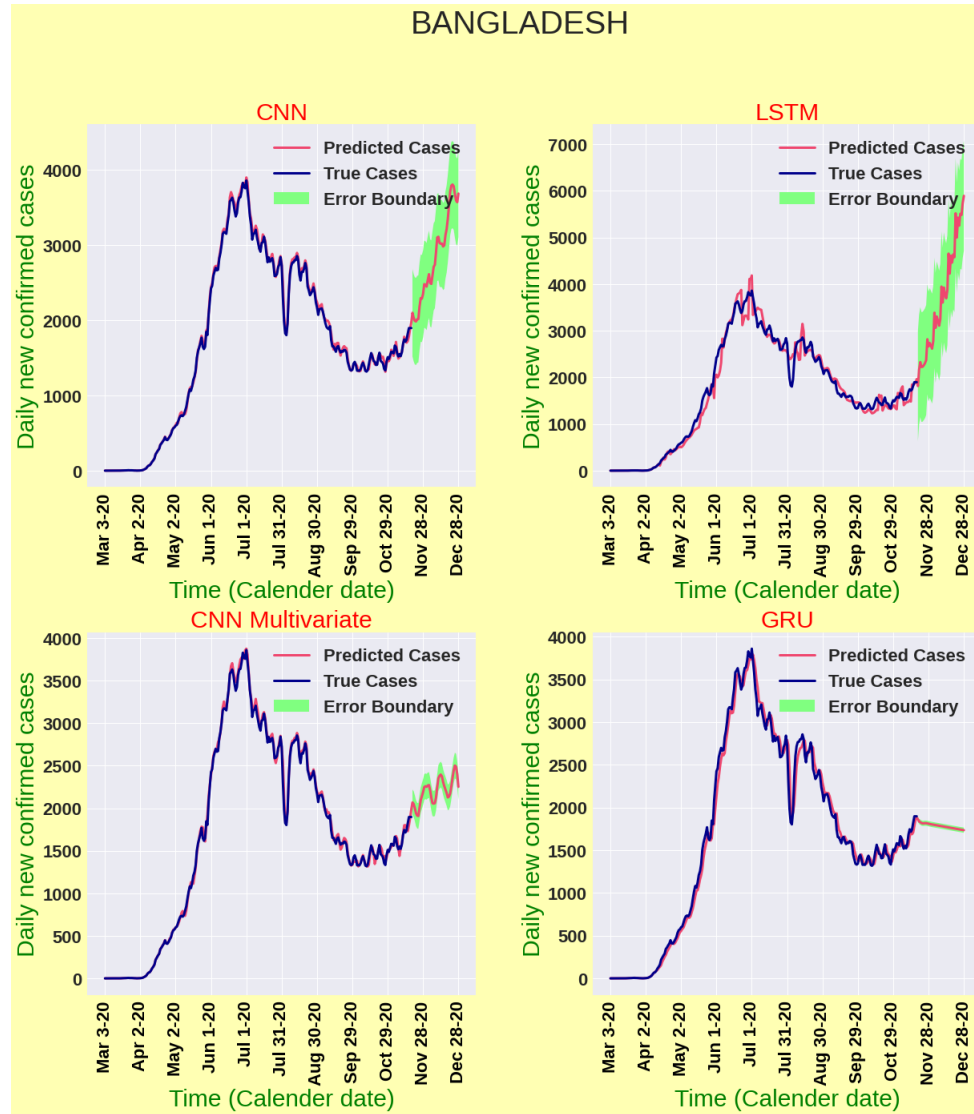


Figure 9: Forecasting results for daily new cases in Bangladesh

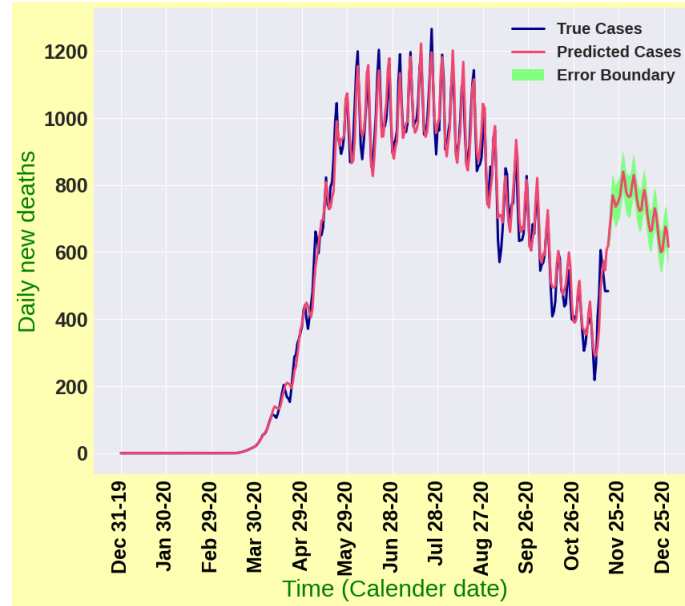


Figure 10: Forecasting results for daily death cases in Brazil

193 Brazil currently has the third highest COVID-19 spreading rate. Due to the highly inconsistent daily
194 test numbers, it has been found that Brazil's daily data is highly volatile and noisy. To address this issue,
195 moving average technique has worked quite well to capture the real trends Fig. 1. Although Brazil has
196 already passed its peak of the first wave with approximately 69,000 daily cases, our analysis is showing that
197 it is probably heading towards another wave. It is evident from Fig. 11 that our CNN model has the lowest
198 metrics value with $nRMSE_{val} = 0.086$ and $MAPE_{val} = 6.94\%$. In addition, the model projects that the
199 country is going to witness another wave by December with a tentative peak of 80,000 new cases on daily
200 basis illustrated in Fig. 12. Multivariate CNN model was the second best performer in validation data
201 with $nRMSE_{val} = 0.109$ and $MAPE_{val} = 8.2\%$ and it also suggests that another wave is approaching in
202 December. It also predicts that the number of cases might decrease soon after reaching the peak of second
203 wave. Two other models: LSTM ($nRMSE_{val} = 0.2$ and $MAPE_{val} = 13.33\%$) and GRU ($nRMSE_{val} =$
204 0.12 and $MAPE_{val} = 10.267\%$) have also predicted that the number of new cases might increase without
205 showing lucid indication of impending second wave. Moreover, Fig. 10 shows that the tally of daily deaths
206 in Brazil is going to increase gradually until early December although the intensity might not be as high as
207 the first wave with a peak of around 800 new deaths per day. As all four models are predicting upsurge daily
208 new cases, public health officials and health care providers should take necessary preparations to make the
209 best use of existing resources.

210 In the case of India, it reached its peak of first wave in mid-September. Although India has shown some
211 decrease in its new cases, time series evidences enlighten that a second wave is yet to come by December

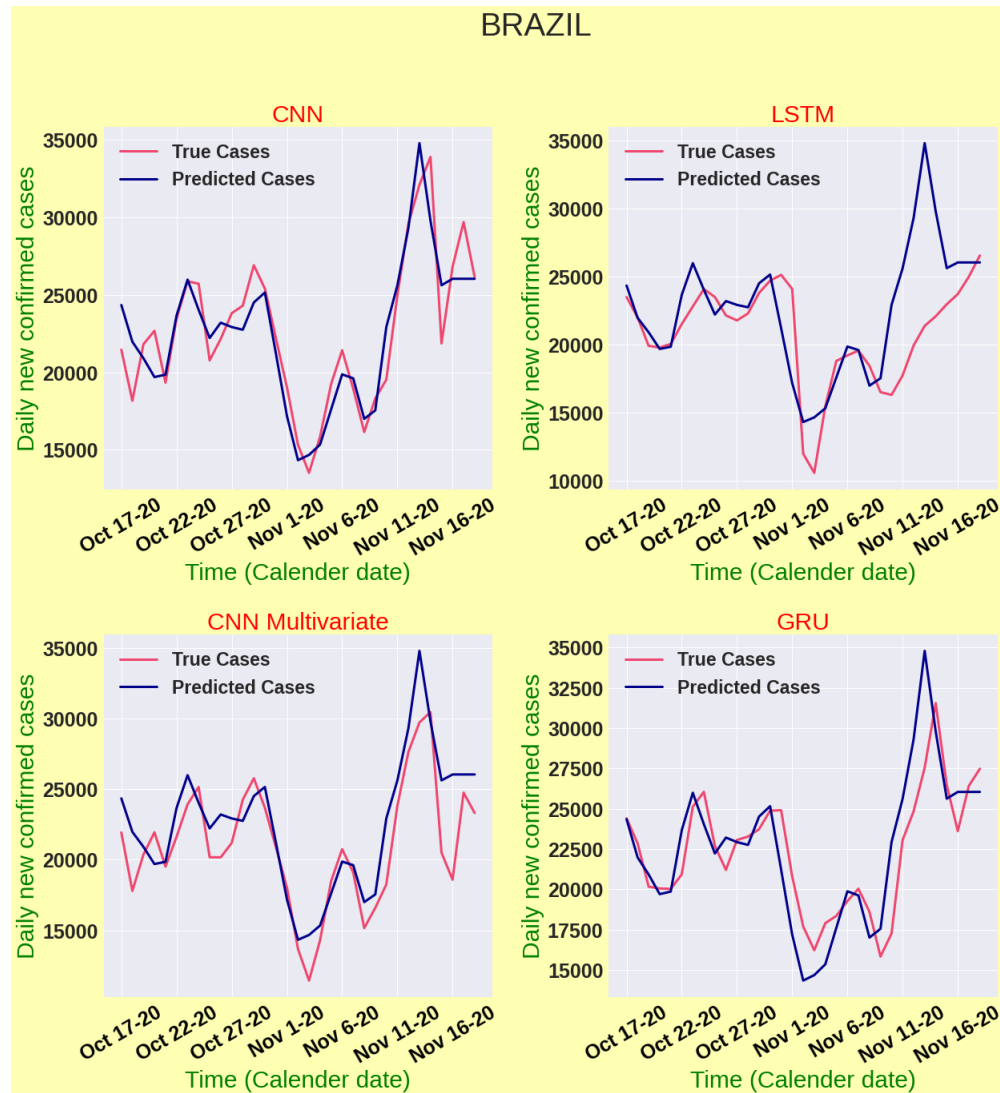


Figure 11: Model validation for Brazil

It is made available under a [CC-BY-NC-ND 4.0 International license](https://creativecommons.org/licenses/by-nc-nd/4.0/).

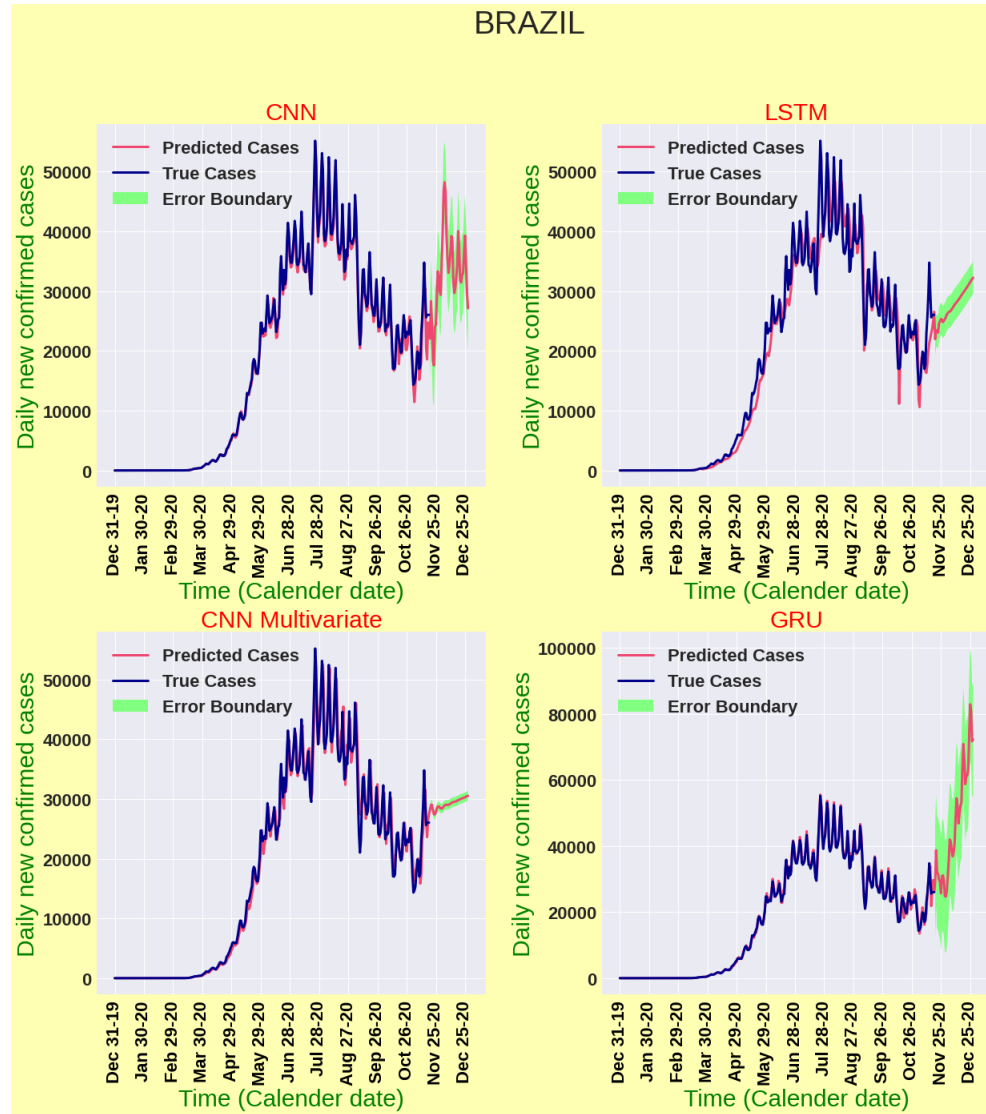


Figure 12: Forecasting results for daily new cases in Brazil

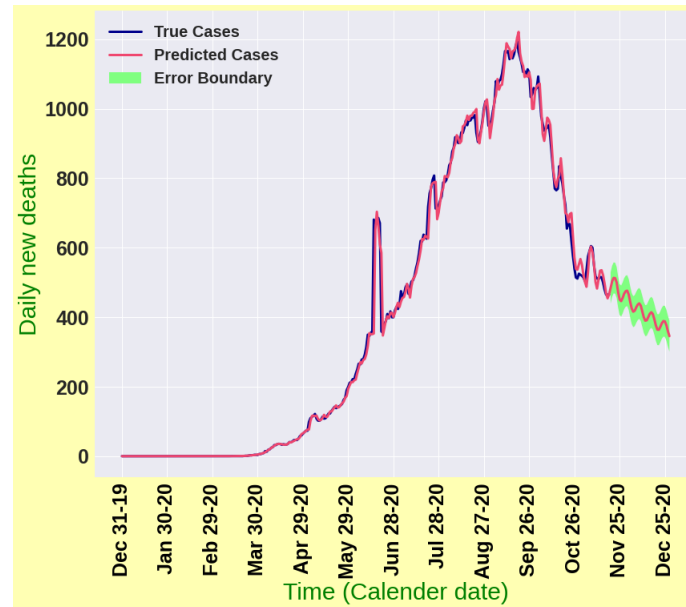


Figure 13: Forecasting results for daily death cases in India

212 Fig. 14. CNN model scored a value of $nRMSE_{val} = 0.03$ and $MAPE_{val} = 2.69\%$ on validation data, which
213 indicates its promising accuracy Fig. 13. Tab. 2 depicts that multivariate CNN model has also projected
214 an increase in cases in upcoming days with $nRMSE_{val} = 0.03$ and $MAPE_{val} = 3.01\%$. Two other models:
215 LSTM ($nRMSE_{val} = 0.08$ and $MAPE_{val} = 4.7\%$) and GRU ($nRMSE_{val} = 0.07$ and $MAPE_{val} = 5.28\%$)
216 have shown a decrease in new cases. Fig. 14 illustrates that CNN and multivariate CNN has shown the
217 highest accuracy and both has indicated a gradual increase with peak of around 70,000 cases per day by
218 late December according to CNN and a gradual increase according to the multivariate CNN. Fig. 15 depicts
219 that number of death cases in India is predicted to decrease according to our best validated model.

220 Russia has already gone through their first wave and in midway of second wave. Our model CNN
221 ($nRMSE_{val} = 0.01$, $MAPE_{val} = 0.85\%$) performs the best in terms of validation data for Russia depicted
222 in Fig. 16. It predicts that the number of daily cases might continue to increase and reach nearly 30,000
223 by late December. Multivariate CNN ($nRMSE_{val} = 0.01$, $MAPE_{val} = 0.86\%$) shows that the cases might
224 mount to 25,000 and then might follow a downward trend. In contrast, LSTM ($nRMSE_{val} = 0.05$ and
225 $MAPE_{val} = 4.64\%$) and GRU ($nRMSE_{val} = 0.014$ and $MAPE_{val} = 1.2\%$) indicates a downtrend of cases.
226 Fig. 18 enlightens that the number of daily deaths could skyrocket alarmingly and reach 1500 on daily basis
227 by late December if this trend continues. It is often really challenging to capture the outbreak scenario as it
228 is highly dynamic and depends on deploying various intervention strategies. However, as cases are projected
229 to increase by two of our highly validated models, more precise strategic planning is required in combating
230 against the forthcoming threatening pandemic scenario.

It is made available under a [CC-BY-NC-ND 4.0 International license](https://creativecommons.org/licenses/by-nc-nd/4.0/).

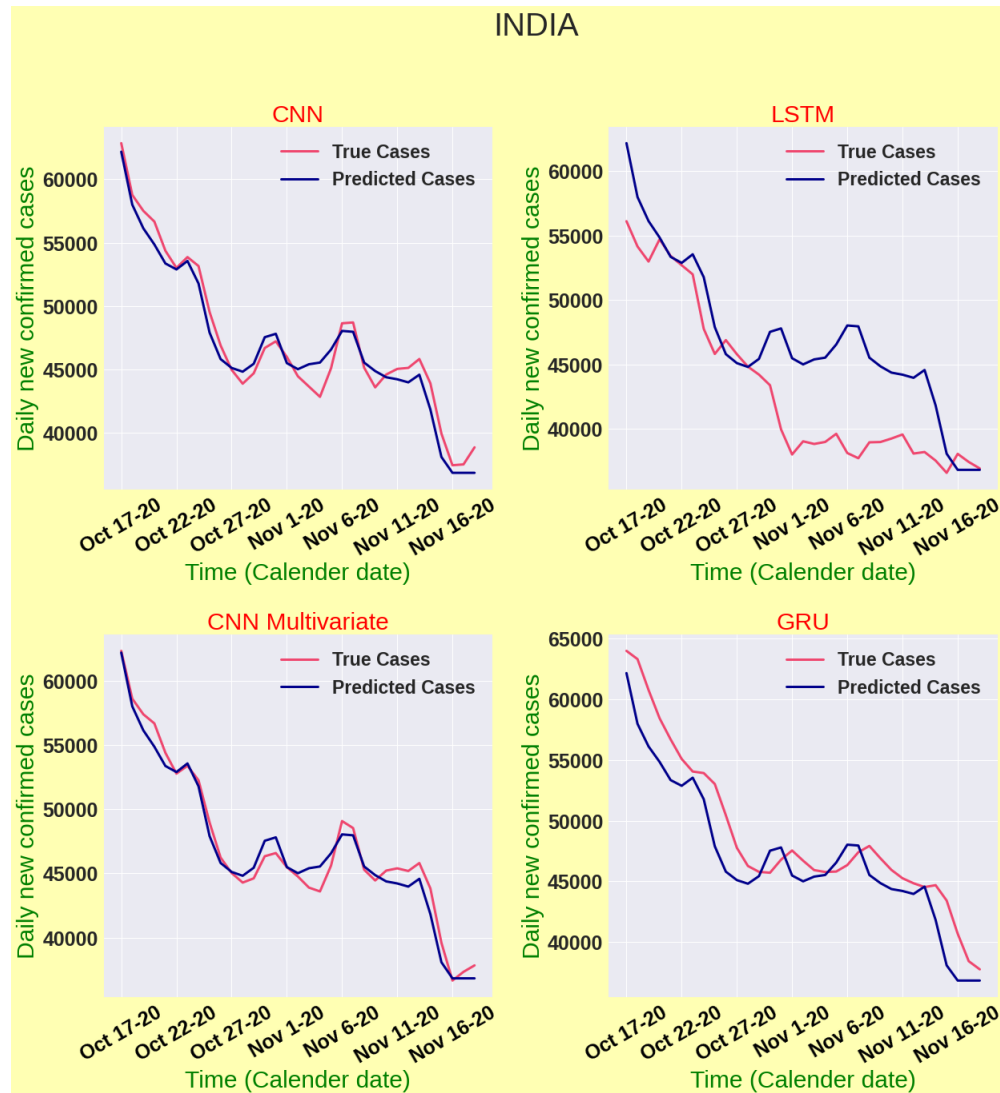


Figure 14: Model validation for India

It is made available under a [CC-BY-NC-ND 4.0 International license](https://creativecommons.org/licenses/by-nc-nd/4.0/).

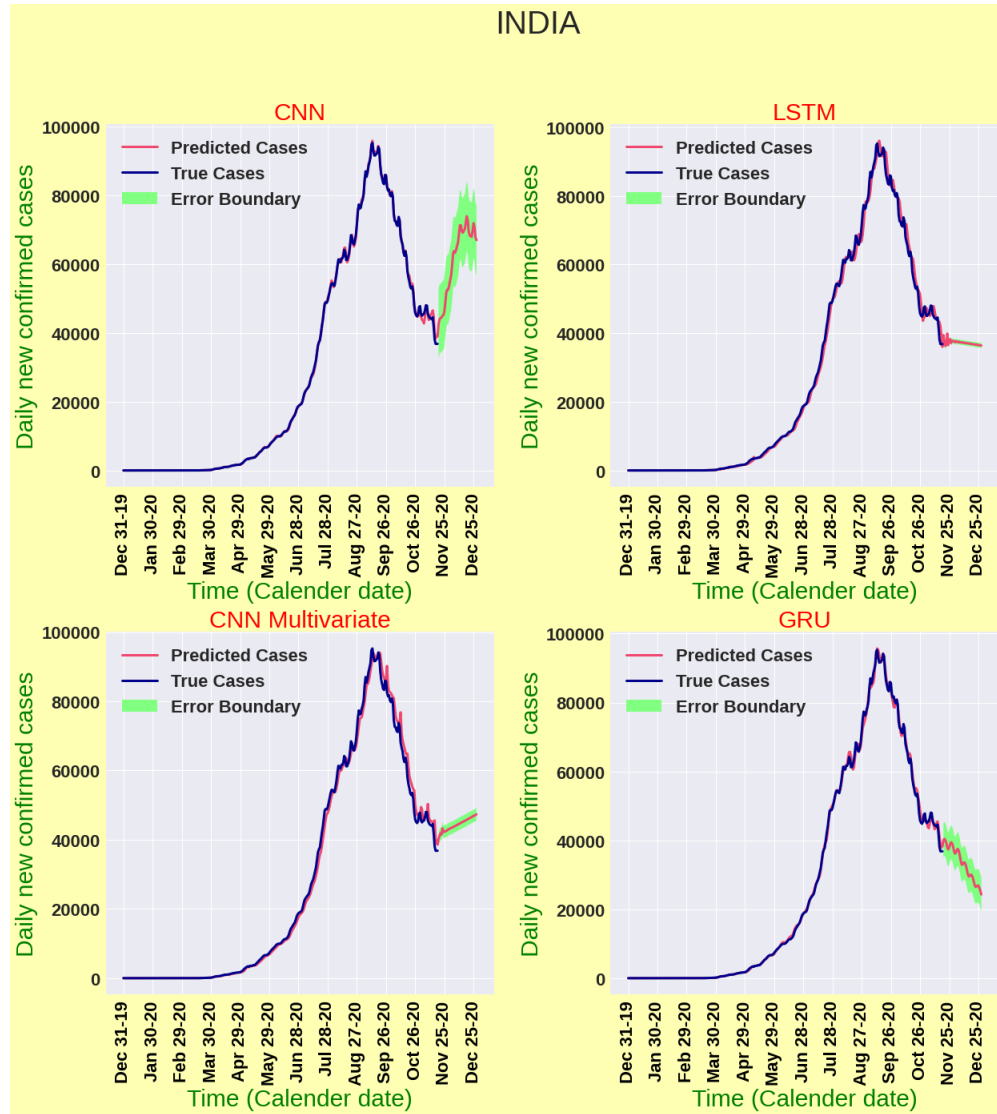


Figure 15: Forecasting results for daily new cases in India

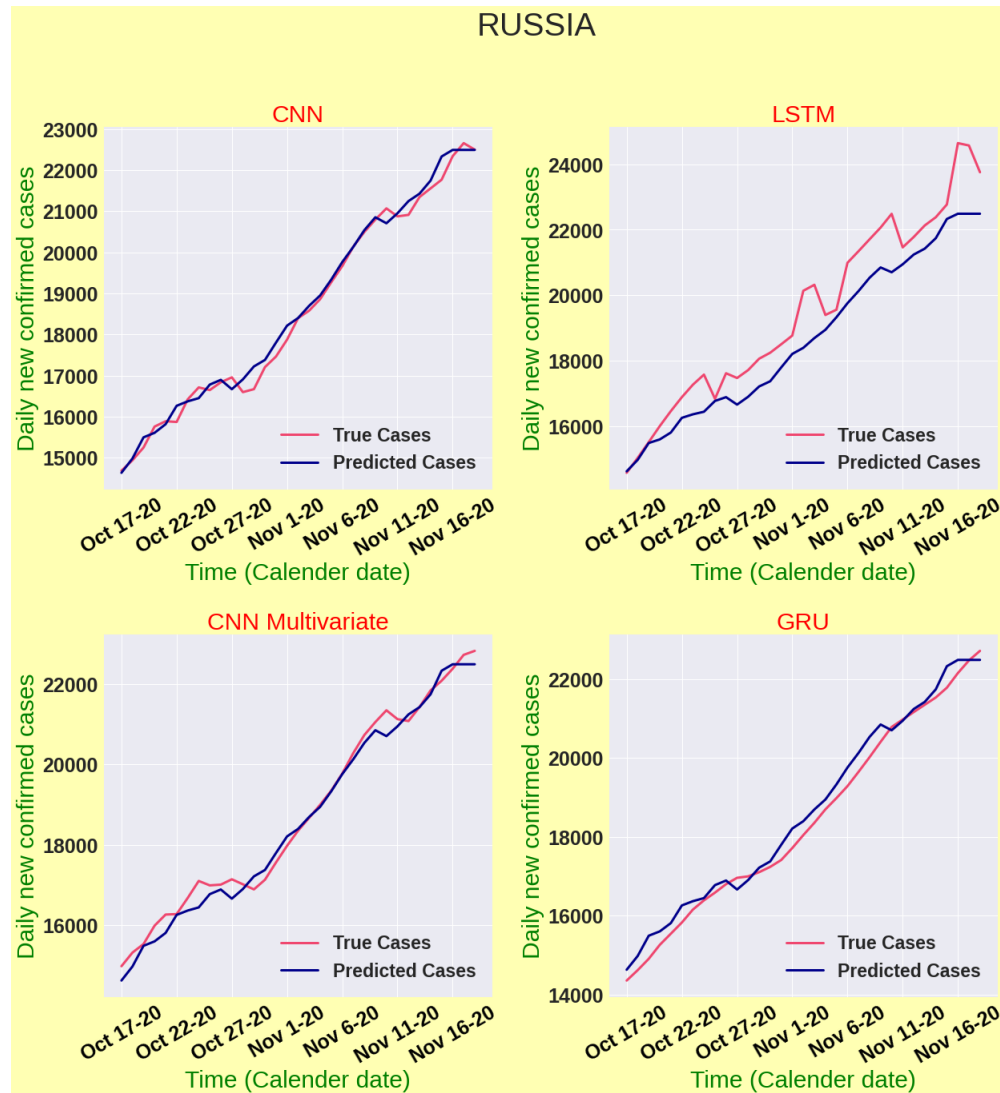


Figure 16: Model validation for Russia

It is made available under a [CC-BY-NC-ND 4.0 International license](https://creativecommons.org/licenses/by-nc-nd/4.0/).

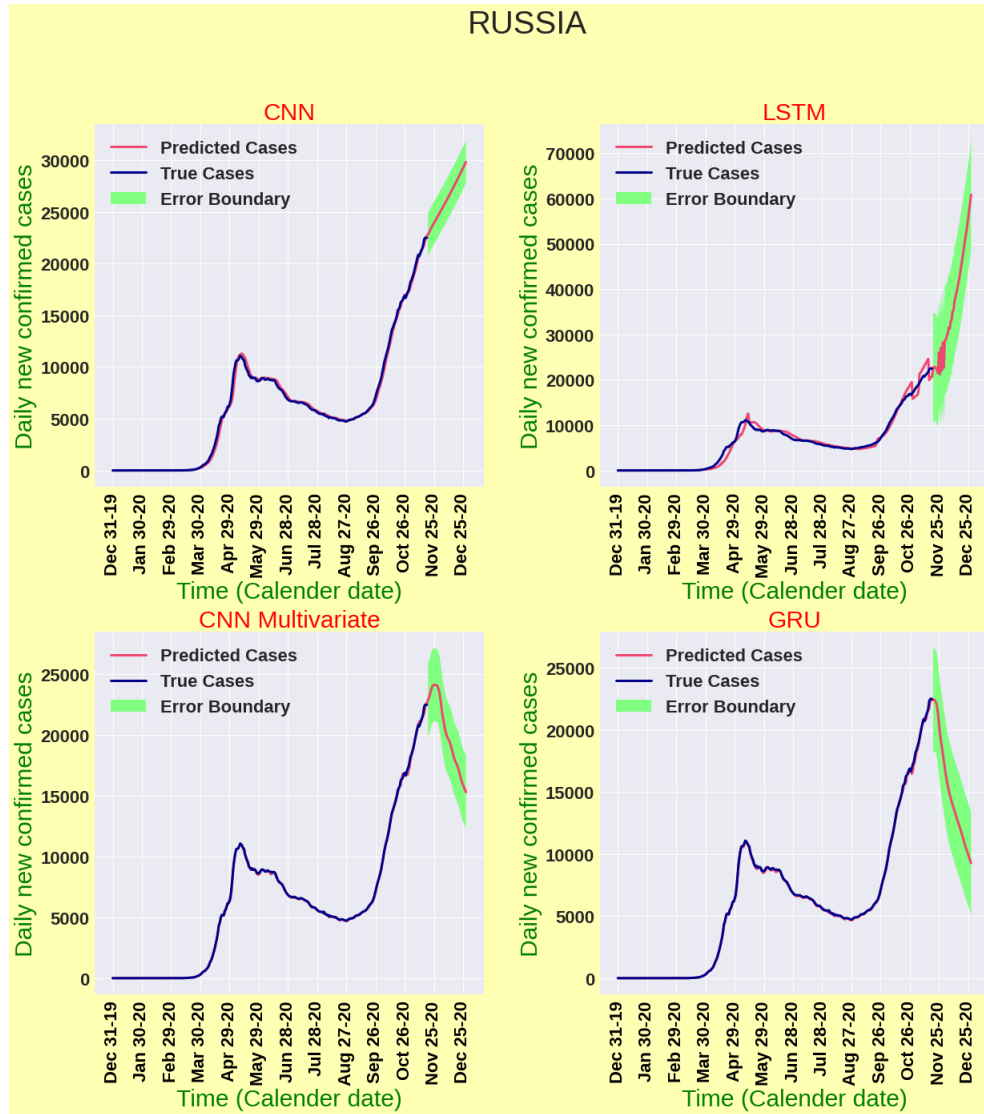


Figure 17: Forecasting results for daily new cases in Russia

It is made available under a [CC-BY-NC-ND 4.0 International license](https://creativecommons.org/licenses/by-nc-nd/4.0/).

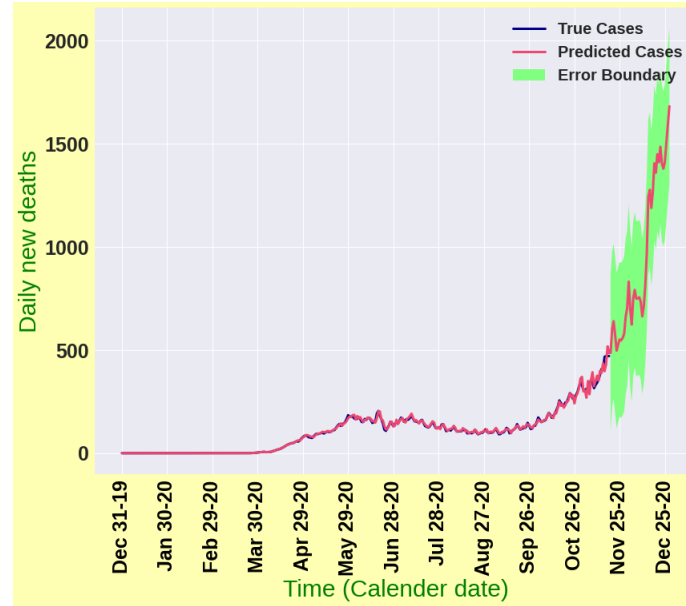


Figure 18: Forecasting results for daily death cases in Russia

231 The United Kingdom (UK) has already witnessed two waves of COVID-19 illustrated in Fig. 21. In
232 the first wave, the transmission chain was quite well controlled with well implemented and maintained
233 lockdown policies. Moreover, the situation was comparatively better than most of the European countries
234 until September. However, due to restriction fatigue and public apathy towards lockdown, the country is
235 grappling with new surges of cases after September and already witnessed a recent peak of about 33,000
236 daily cases. It has been found in our analysis that the number of daily cases may hold the upward trend in
237 upcoming days. Fig. 20 enlightens the fact that, our CNN model achieved an $nRMSE_{val}$ score of 0.04809
238 and $MAPE_{val}$ score of 3.75%, while the Multivariate CNN model shows $nRMSE_{val} = 0.09$ and $MAPE_{val} =$
239 7.8%. On the other hand, $nRMSE_{val} = 0.06481$ and $MAPE_{val} = 5.25\%$ have been found for LSTM model.
240 Finally, the GRU model hits $nRMSE_{val} = 0.04$ and $MAPE_{val} = 2.997\%$ metric. Comparing with other
241 four models, it has been found that the GRU model best validates the data with the lowest percentage error.
242 The CNN model also performs quite well in this case. However, the CNN and Multivariate CNN models have
243 also projected that the probability of case decline soon after the peak is reached. As the UK government has
244 declared a countrywide lockdown from November 5 to December 2 it could be assumed that the transmission
245 rate is going to decline if lockdown is maintained properly. Historical data of the UK also suggest that
246 the positive impact of this countrywide lockdown is becoming visible and cases have been decreasing since
247 November 13, 2020. The case study of the UK can be an example for countries dealing with the increasing
248 number of COVID-19 cases. According to our model projection illustrated in Fig. 19, the number of daily
249 deaths is going to escalate by overshooting the intensity of prior waves in near future and could reach 1000,

It is made available under a [CC-BY-NC-ND 4.0 International license](https://creativecommons.org/licenses/by-nc-nd/4.0/) .

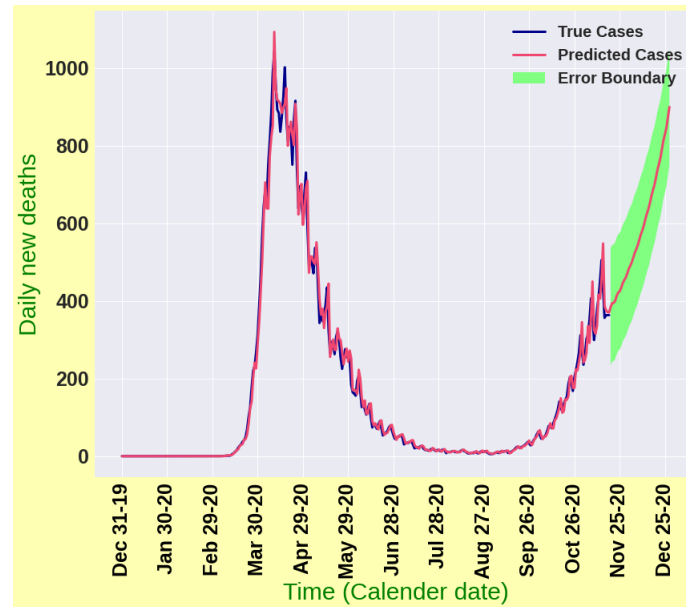


Figure 19: Forecasting results for daily death cases in the United Kingdom

250 which could be a great concern for the country's strategy builders.

251 It is worth mentioning that researchers have used LSTM and its variants overwhelmingly with a view to
252 forecasting COVID-19 cases in an early outbreak scenario [15, 22, 23]. Nevertheless, our analysis enlightens
253 that CNN and multivariate CNN algorithms have performed really well compared to LSTM algorithm. A
254 probable reason for this might be explained from [24]. Our dataset lacks large amount of data, whereas
255 sufficient amount of data is preferred for LSTM algorithm to capture the essential features in time series
256 data. For instance, the performance of LSTM is really laudable in terms of dealing with stock price data
257 while historical data is available [25]. Sima and Akbar [26] showed that LSTM algorithm can be applied
258 successfully for analysing business analytics data. On the other hand, CNN fundamentally aims at focusing on
259 local features with more attention [27]. In spite of having , CNN has been really successful in extracting local
260 features, patterns, trends and deviations. Moreover, CNN has successfully unearthed the complex nonlinear
261 dependencies regarding the epidemic transmission. The number of daily death cases in Bangladesh, Brazil,
262 India, Russia and the UK have been projected with a forecasting horizon of 40 days with our best validated
263 model CNN.

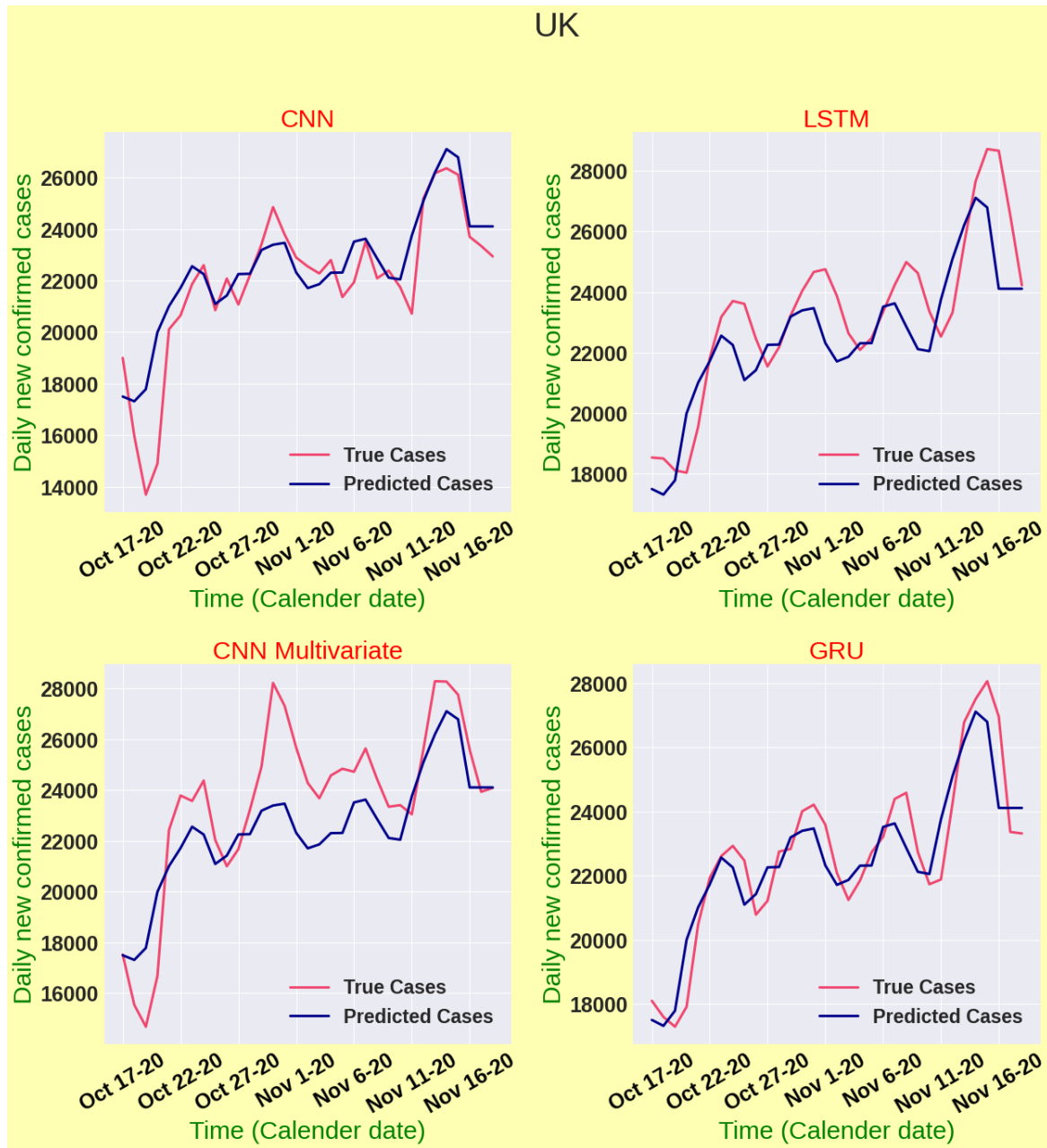


Figure 20: Model validation for the United Kingdom

It is made available under a [CC-BY-NC-ND 4.0 International license](https://creativecommons.org/licenses/by-nc-nd/4.0/).

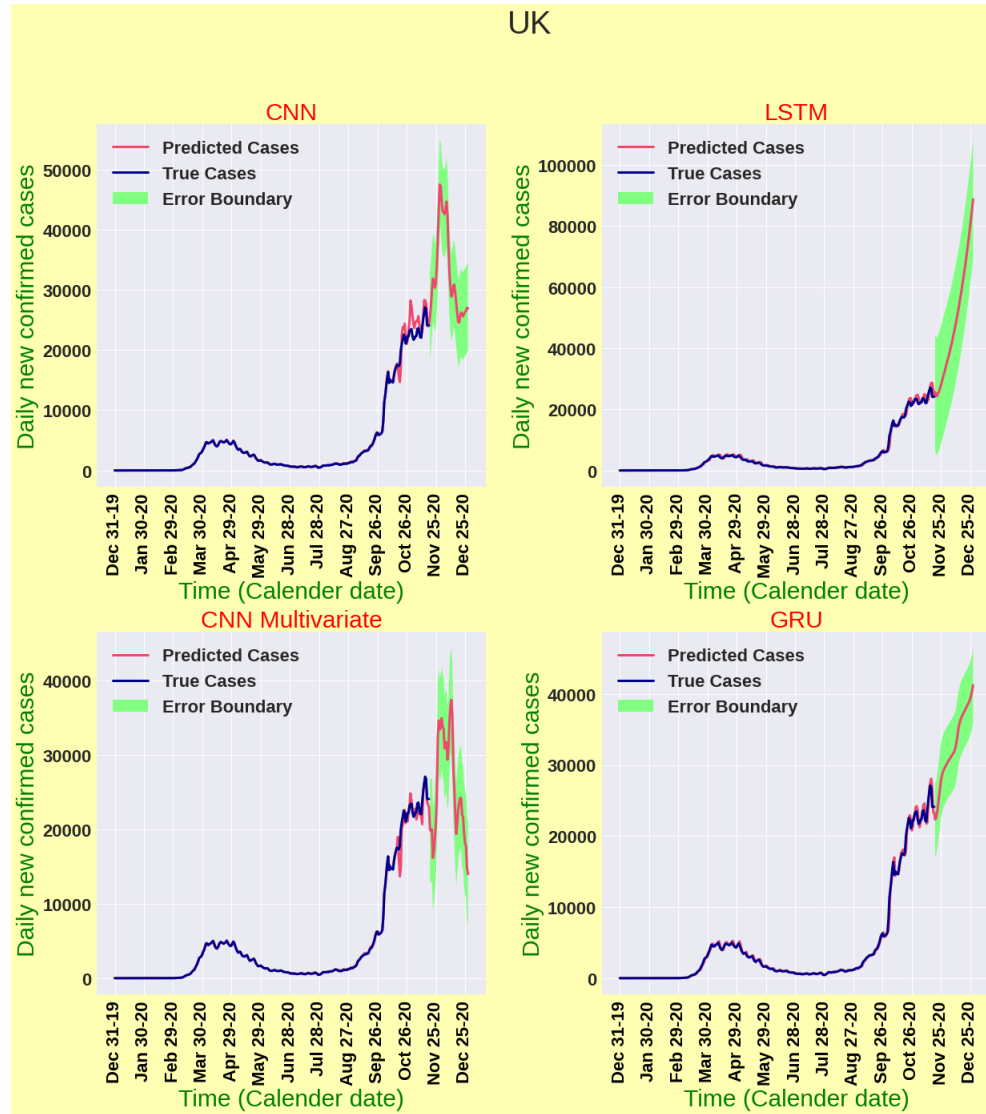


Figure 21: Forecasting results for daily new cases in the United Kingdom

Country	Deep learning model	Evaluation metric values			
		$nRMSE_{train}$	$nRMSE_{val}$	$MAPE_{train}$	$MAPE_{val}$
Bangladesh	LSTM	0.09	0.045	7.81%	3.94%
	GRU	0.039	0.044	2.92%	3.41%
	CNN	0.026	0.03	4.14%	2.54%
	Multivariate CNN	0.019	0.026	2.33%	2.19%
Brazil	LSTM	0.16	0.197	14.92%	13.33%
	GRU	0.103	0.124	8.39%	10.267%
	CNN	0.054	0.086	8.20%	6.94%
	Multivariate CNN	0.068	0.109	16.73%	8.21%
India	LSTM	0.16	0.08	18.58%	4.698%
	GRU	0.08	0.07	9.31%	5.28%
	CNN	0.06	0.03	5.31%	2.69%
	Multivariate CNN	0.059	0.03	11.79%	3.01%
Russia	LSTM	0.203	0.05	14.03%	4.64%
	GRU	0.05	0.01	5.76%	1.199%
	CNN	0.06	0.014	6.61%	0.85%
	Multivariate CNN	0.05	0.01	4.79%	0.86%
United Kingdom	LSTM	0.26	0.065	16.36%	5.25%
	GRU	0.11	0.036	7.0%	2.997%
	CNN	0.12	0.048	12.0%	3.75%
	Multivariate CNN	0.15	0.094	14.48%	7.797%

Table 2: Values of evaluation metric from various deep learning models on different countries

264 4. Conclusions

265 In this paper, four deep learning architectures: LSTM, GRU, CNN and multivariate CNN have been
266 implemented with a view to forecasting new COVID-19 cases and new deaths in Bangladesh, Brazil, India,
267 Russia and the UK until late December 2020. We have used MSE as our loss function and used MAPE and
268 nRMSE as the performance indicators for the studied deep learning models. Among the four deep learning
269 models, CNN has performed extremely well in terms of validation accuracy and forecasting consistency.
270 Moreover, the concept of multivariate CNN architecture has been implemented for the first time in this
271 study, which showed robust forecasting performance for the studied countries. CNN algorithm has been
272 proposed for long term forecasting in the absence of seasonality and periodic patterns in time series datasets.
273 Moreover, the failure of LSTM architecture has also been disclosed in analysing such datasets. Importantly,
274 according to CNN model projection results, clear indications pertinent to quick arrival of second wave of
275 COVID-19 in above-mentioned countries have been unearthed. Due to pandemic fatigue and public apathy
276 towards different non-pharmaceutical intervention strategies, second wave of COVID-19 could bring dreadful
277 disasters in aforesaid countries. Public health officials in those countries should act immediately and deploy
278 stringent intervention strategies to battle strategically against the pandemic.

279 References

- 280 [1] K. et. al., Effectiveness of isolation, testing, contact tracing, and physical distancing on reducing trans-
281 mission of sars-cov-2 in different settings: a mathematical modelling study, *The Lancet Infectious*
282 *Diseases* 20 (10) (2020) 1151–1160.
- 283 [2] B. Tang, N. L. Bragazzi, Q. Li, S. Tang, Y. Xiao, J. Wu, An updated estimation of the risk of trans-
284 mission of the novel coronavirus (2019-ncov), *Infectious Disease Modelling* 5 (2020) 248—255.
- 285 [3] K. N. Nabi, Forecasting covid-19 pandemic: A data-driven analysis, *Chaos, Solitons & Fractals* 139
286 (2020) 110046.
- 287 [4] K. N. Nabi, H. Abboubakar, P. Kumar, Forecasting of covid-19 pandemic: From integer derivatives to
288 fractional derivatives, *Chaos, Solitons & Fractals* 141 (2020) 110283.
- 289 [5] Q. Lin, S. Zhao, D. Gao, Y. Lou, S. Yang, S. S. Musa, M. H. Wang, Y. Cai, W. Wang, L. Yang,
290 et al., A conceptual model for the outbreak of coronavirus disease 2019 (covid-19) in wuhan, china with
291 individual reaction and governmental action, *International journal of infectious diseases* (2020).
- 292 [6] K. N. Nabi, P. Kumar, V. S. Erturk, Projections and fractional dynamics of covid-19 with optimal
293 control analysis, *medRxiv* (2020). doi:10.1101/2020.11.17.20233031.

- 294 [7] C. N. Ngonghala, E. Iboi, S. Eikenberry, M. Scotch, C. R. MacIntyre, M. H. Bonds, A. B. Gumel,
295 Mathematical assessment of the impact of non-pharmaceutical interventions on curtailing the 2019
296 novel coronavirus, *Mathematical Biosciences* (2020) 108364.
- 297 [8] T. May, Lockdown-type measures look effective against covid-19, *BMJ* 370 (2020).
- 298 [9] N. Ferguson, D. Laydon, G. Nedjati Gilani, N. Imai, K. Ainslie, M. Baguelin, S. Bhatia, A. Boonyasiri,
299 Z. Cucunuba Perez, G. Cuomo-Dannenburg, et al., Report 9: Impact of non-pharmaceutical interven-
300 tions (npis) to reduce covid19 mortality and healthcare demand, dsprpub.cc.ic.ac.uk (2020).
- 301 [10] S. E. Eikenberry, M. Mancuso, E. Iboi, T. Phan, K. Eikenberry, Y. Kuang, E. Kostelich, A. B. Gumel,
302 To mask or not to mask: Modeling the potential for face mask use by the general public to curtail the
303 covid-19 pandemic, *Infectious Disease Modelling* 5 (2020) 293–308.
- 304 [11] J. Panovska-Griffiths, Can mathematical modelling solve the current covid-19 crisis?, *BMC Public*
305 *Health* 20 (2020) 551.
- 306 [12] A. A., Mathematical modeling and the transmission dynamics in predicting the covid-19 - what next in
307 combating the pandemic, *Infectious Disease Modelling* 5 (2020) 366–374.
- 308 [13] A. S. Fokas, N. Dikaios, G. A. Kastis, Mathematical models and deep learning for predicting the number
309 of individuals reported to be infected with sars-cov-2, *Journal of The Royal Society Interface* 17 (169)
310 (2020) 20200494.
- 311 [14] P. Wang, X. Zheng, G. Ai, D. Liu, B. Zhu, Time series prediction for the epidemic trends of covid-19
312 using the improved lstm deep learning method: Case studies in russia, peru and iran, *Chaos, Solitons*
313 *& Fractals* 140 (2020) 110214.
- 314 [15] P. Arora, H. Kumar, B. K. Panigrahi, Prediction and analysis of covid-19 positive cases using deep
315 learning models: A descriptive case study of india, *Chaos, Solitons & Fractals* 139 (2020) 110017.
- 316 [16] C.-. G. Repository, Center for systems science and engineering at johns hopkins university, [https:](https://github.com/CSSEGISandData/COVID-19)
317 [//github.com/CSSEGISandData/COVID-19](https://github.com/CSSEGISandData/COVID-19) (Date accessed November 19, 2020).
- 318 [17] C.-J. Huang, P.-H. Kuo, Multiple-input deep convolutional neural network model for short-term photo-
319 voltaic power forecasting, *IEEE Access* 7 (2019) 74822–74834.
- 320 [18] Y. LeCun, P. Haffner, L. Bottou, Y. Bengio, Shape, contour and grouping in computer vision (1999).
- 321 [19] K. Cho, B. Van Merriënboer, C. Gulcehre, D. Bahdanau, F. Bougares, H. Schwenk, Y. Bengio, Learning
322 phrase representations using rnn encoder-decoder for statistical machine translation, arXiv preprint
323 arXiv:1406.1078 (2014).

- 324 [20] L. Cao, A. Mees, K. Judd, Dynamics from multivariate time series, *Physica D: Nonlinear Phenomena*
325 121 (1-2) (1998) 75–88.
- 326 [21] S. Sengupta, Forecasting the peak of covid-19 daily cases in india using time series analysis and multi-
327 variate lstm, Tech. rep. (2020).
- 328 [22] V. K. R. Chimmula, L. Zhang, Time series forecasting of covid-19 transmission in canada using lstm
329 networks, *Chaos, Solitons & Fractals* 135 (2020) 109864.
- 330 [23] F. Shahid, A. Zameer, M. Muneeb, Predictions for covid-19 with deep learning models of lstm, gru and
331 bi-lstm, *Chaos, Solitons & Fractals* 140 (2020) 110212.
- 332 [24] L. Wang, J. Chen, M. Marathe, Defsi: Deep learning based epidemic forecasting with synthetic infor-
333 mation, in: *Proceedings of the AAAI Conference on Artificial Intelligence*, Vol. 33, 2019, pp. 9607–9612.
- 334 [25] S. Selvin, R. Vinayakumar, E. Gopalakrishnan, V. K. Menon, K. Soman, Stock price prediction using
335 lstm, rnn and cnn-sliding window model, in: *2017 international conference on advances in computing,*
336 *communications and informatics (icacci)*, 2017, pp. 1643–1647.
- 337 [26] S. Siami-Namini, A. S. Namin, Forecasting economics and financial time series: Arima vs. lstm, arXiv
338 preprint arXiv:1803.06386 (2018).
- 339 [27] B. Zhang, J. Li, Q. Lü, Prediction of 8-state protein secondary structures by a novel deep learning
340 architecture, *BMC bioinformatics* 19 (1) (2018) 293.