

Individual participant data systematic reviews with meta-analyses of psychotherapies for borderline personality disorder: A protocol

Corresponding author: Ole Jakob Storebø, Psychiatric Research Unit, Region Zealand Psychiatry, Fælledvej 6 4th floor, 4200 Slagelse, Denmark and Department of Psychology, University of Southern Denmark ojst@regionsjaelland.dk

Johanne Pereira Ribeiro, Psychiatric Research Unit, Region Zealand Psychiatry, Fælledvej 6 4th floor 4, 4200 Slagelse, Denmark joper@regionsjaelland.dk

Mickey T. Kongerslev, Psychiatric Research Unit, Region Zealand Psychiatry, Fælledvej 6 4th floor, 4200 Slagelse, Denmark mkon@regionsjaelland.dk

Jutta Stoffers-Winterling, Department of Psychiatry and Psychotherapy, University Medical Center of the Johannes Gutenberg University Mainz, Untere Zahlbacher Straße 8, D-55131 Mainz, Germany, jutta.winterling@gmail.com

Mie Sedoc Jørgensen, Psychiatric Research Unit, Region Zealand Psychiatry, Fælledvej 6 4th floor, 4200 Slagelse, Denmark mipjo@regionsjaelland.dk

Klaus Lieb, Department of Psychiatry and Psychotherapy, University Medical Center of the Johannes Gutenberg University Mainz, Untere Zahlbacher Straße 8, D-55131 Mainz, Germany, klaus.lieb@unimedizin-mainz.de

Anthony Bateman, University College and Royal Free Medical Schools and St. Ann's Hospital, St Ann's Road, London N15 3TH anthony.bateman@ucl.ac.uk

Richard Kirubakaran, Research Scientist at Prof BV Moses Centre for Evidence Informed Healthcare and Health Policy, Vellore, Tamil Nadu, India richrichigo@gmail.com

Nicolas Dérian, Data and Development Support Unit, Region Zealand nder@regionsjaelland.dk

Eirini Karyotaki, Department of Clinical, Neuro- and Developmental Psychology, Section Clinical Psychology, Vrije Universiteit, Amsterdam, The Netherlands e.karyotaki@vu.nl

Pim Cuijpers, Department of Clinical, Neuro- and Developmental Psychology, Section Clinical Psychology, Vrije Universiteit, Amsterdam, The Netherlands p.cuijpers@vu.nl

Erik Simonsen, Psychiatric Research Unit, Region Zealand Psychiatry, Fælledvej 6 4th floor, 4200 Slagelse, Denmark and Department of Clinical Medicine, University of Copenhagen. es@regionsjaelland.dk

Abstract

Introduction: The heterogeneity in people with BPD and the range of specialised psychotherapies means that people with certain BPD characteristics might benefit more or less from different types of psychotherapy. Identifying moderating characteristics of individuals is a key to refine and tailor standard treatments so they match the specificities of the individual patient. The objective of this is to improve the quality of care and the individual outcomes. Thus, the aim of the current reviews is to investigate potential predictors and moderating patient characteristics on treatment outcomes for patients with BPD.

Methods and analysis: Our primary meta-analytic method will be the one-stage random-effects approach. To identify predictors, we will be using the one-stage model that accounts for interaction between covariates and treatment allocation. Heterogeneity in case-mix will be assessed using a membership model based on a multinomial logistic regression where study membership is the outcome. A random-effects meta-analysis is chosen to account for expected levels of heterogeneity.

Ethics and dissemination: The statistical analyses will be conducted on anonymised data that have already been approved by the respective ethical committees that originally assessed the included trials. The three IPD reviews will be published in high impact factor journals and their results will be presented at international conferences and national seminars.

Protocol registration: The IPD reviews, described in this study protocol, are registered with the PROSPERO International Prospective Register of Systematic Reviews (registration number: awaiting)

Strengths and limitations of this protocol

- These IPD-reviews are the first to systematically review and investigate psychotherapy for people with borderline personality disorder using individual participant data.
- The IPD- reviews will provide information on moderators and predictors in patients with borderline personality disorder that predict who may benefit most from which type of specialised psychotherapy.
- Individual participant data allows for a more precise risk of bias assessment and decreases the amount of unclear risk of bias in many of the included trials.
- A limitation to IPD-reviews in general is that data retrieval can be challenging.
- The IPD-reviews are limited to the outcomes and patient characteristics that have been assessed in the included trials.

Introduction

Borderline personality disorder - diagnosis and treatment

Due to the polythetic approach to diagnosing borderline personality disorder (BPD), there are 256 ways of meeting the criteria for a BPD diagnosis.¹ This means that apart from meeting the general diagnostic criteria for personality disorder (PD), the patients also need to fulfil five or more of the nine specific BPD criteria according to the current DSM classification system.¹ This makes the BPD population highly heterogeneous. A fact that is exacerbated by the common co-occurrence of many other psychiatric and somatic conditions. Also, co-occurring psychiatric conditions, e.g., life-threatening eating disorders or substance use dependence, are often persistent and may impede BPD treatment.²⁻⁴ People with BPD need effective treatment due to the considerable psychological suffering of those concerned⁵, the high burden experienced by their families and significant others,⁶ ⁷ the significant impact they have on mental health services given their frequent use,^{8,9} as well as the association of BPD with sustained functional impairment,¹⁰ physical illness,¹¹ and premature death.¹²⁻¹⁴

The prevalence of BPD in the general population is estimated to be 1,8%,¹⁵ and the diagnosis is one of the most common in the psychiatric system.¹⁶ In addition to the effects on the individual and his/hers relatives, the annual direct total costs for the Danish health sector is roughly 53.000 Euro per patient with BPD per year. This number is 16 times the costs of general population controls, according to a recent nationwide study by Hastrup and colleagues.¹⁷ From an economic perspective alone, this calls for more effective treatments for people with BPD, and a precisely targeted use of resources.

Storebø and colleagues published a Cochrane Review in May 2020¹⁸ that investigated the beneficial and harmful effects of psychotherapeutic treatments for people with BPD. Their findings showed that all major types of psychotherapies for BPD had a modest positive average effect at group level. However, it is likely that the participants' individual responses differed in relation to certain self-inherent characteristics. Therefore, data is now needed at the level of the individual patient in order to find out for *whom* the different specialised psychotherapies may have a greater or smaller effect (i.e., what type of psychotherapy will have the largest treatment effect when taking the personal and clinical characteristics of the participant into consideration).

Given the heterogeneity of individuals affected by BPD, and the availability of several effective treatments of different theoretical orientations¹⁸ it is possibly that individuals with certain characteristics might benefit to a higher extent from some treatments, and less from others.

Identifying such patient characteristics may allow for a more refined and individualised treatment, and optimise the treatment quality and effect for BPD patients.¹⁹ Research identifying BPD characteristics that affect the outcome of the various treatments is therefore needed.

As called for by Barber and Solomov,²⁰ we attempt to find and match the most effective specialised psychotherapeutic treatments with the needs of the individual patient based on

personal and clinical characteristics. Hereby, we are effectively moving towards a personalised approach to psychotherapeutic treatment.

Most people with BPD will receive psychological interventions because drugs are not effective for the BPD core symptoms.^{4 21 22} Psychological interventions are often provided for relatively long periods (e.g., one year or longer).^{23 24} Psychotherapy is thus the current treatment of choice for patients with BPD.²⁵

A broad range of specialised psychotherapies for BPD are available.^{18 26 27} These therapies are usually precisely structured and manualised²⁶ and are delivered in individual therapy format or as combined individual- and group treatments. Most BPD-specific psychological interventions involve multimodal therapy, treatment contracts, actively taking measures to minimise premature non-completion of treatment, providing a crisis intervention protocol and stimulating the participant's sense of agency.²⁶⁻³¹ For a more detailed description of the different types of BPD tailored psychotherapies, see Storebø et al. 2020.¹⁸

Most people in treatment for BPD receive long-term psychotherapeutic treatment,^{4 24} while, on the other hand, not all individuals in need have access to adequate treatment, even in highly-developed countries.³² A recent review of European guidelines on diagnosing and treating personality disorders reported that psychotherapy was the first-line treatment recommended in all countries.²⁵

Psychotherapeutic treatments for BPD are based on a variety of different therapeutic schools, e.g., psychodynamic, cognitive-behavioural, or client-centered/humanistic therapy.³³ However, there has been a development of multiple psychotherapeutic treatments that are more disorder-specific (i.e. specifically adapted for BPD) within the last three decades. This development is due to the disorder-inherent challenges that individuals diagnosed with BPD often face and pose in treatment. Among the specific psychological interventions for people diagnosed with BPD, the most commonly researched and used ones are: Dialectical behaviour therapy (DBT),^{34 35} Mentalisation-based treatment (MBT),³⁶⁻³⁸ Systems training for emotional predictability and problem solving (STEPPS),³⁹ Transference-focused therapy (TFP),^{40 41} Cognitive analytic therapy (CAT),^{42 43} and Schema-focused therapy (SFT).^{44 45} The treatment of BPD is very complex due to the complexity of the pathology itself, but tailored treatments can improve the outcomes. Therefore we want to systematize the use of treatments matching patients characteristics by conducting these IPD reviews.

Purpose of the current Individual Patient Data reviews

The preceding Cochrane review of psychological psychotherapies for BPD¹⁸ provided an initial overview of the research in the area and presented results based on analyses of aggregated data. As such, this Cochrane review can be considered a first step in the research process. The current project is the next steps which focus on predictors and moderators of outcomes.⁴⁶

We define predictors as a collection of parameters (demographic, clinical or biologic) that influence the likelihood of specific outcomes to occur.

Moderators are special case of predictors defined as baseline parameters (demographic, clinical or biologic) affecting the likelihood of a specific event to occur in one situation compare to another one. E.g., a mediator can improve the prediction of a treatment efficacy to achieve a specific outcome, compare to another treatment⁴⁷

The results of the project will provide tangible advice to practitioners and people affected by the disorder on how to select the psychotherapeutic treatment deemed to have the most effective outcome when considering patient characteristics. Overall, this will help to ensure that more people with BPD will receive a treatment that is adapted to the individual's needs. To investigate these characteristics, we will perform three systematic reviews with meta-analyses of psychotherapies for BPD using individual participant data (IPD). IPD meta-analyses are particularly well suited for the purposes of this project because all the raw data from the included trials is used, which allows for a detailed exploration of the causes of heterogeneity.⁴⁸ IPD reviews are closely related to personalised medicine where it is important to understand for whom, and under what conditions, treatment exerts the best effect. Furthermore, findings of the reviews are likely to inform future treatment guidelines.

IPD review methodology

Though the IPD methodology is still rather new, IPD reviews have generally had a substantial impact on clinical practice and research.⁴⁶

When IPD for each participant in clinical trials are available, they can be used to individualise the results of clinical trials.²⁶ There are already several examples of recent IPD reviews that has decreased the knowledge-gap in somatic research areas.⁴⁹⁻⁵¹ Within the psychiatric field, IPD reviews have been used to investigate treatment effects across various patient groups, with direct implications for clinical practice.⁵²⁻⁵⁷ However, when conducting extensive searches in relevant databases, we found no IPD review that investigated psychotherapy for BPD.

The use of IPD can promote standardisation of data in analyses and allows for direct extraction of data to outcomes, independently of how these were reported in the original trial publication. Studies that use IPD show a greater power in detecting effect differences in outcomes between individuals.⁵⁸ This can provide valuable information about responders and non-responders to the different types of treatments. Analyses based on IPD data also allow for the use of more sophisticated statistical methods.⁵⁹ In particular, IPD may allow for exploring causes of heterogeneity such as baseline differences, selection criteria, dose and duration of treatments received by participants in control groups, and differential negative effects of the treatments. Missing data can also be handled in a more standardised manner in IPD reviews. Furthermore, access to IPD data allows for a more reliable risk of bias assessment due to deeper insight into the original data. Finally, IPD allows us to perform subgroup analyses that have not previously been conducted, thereby answering new and pressing research questions concerning how to optimise treatments for BPD for the individual patient.⁴⁸

Objectives

This protocol describes three planned IPD reviews each aiming to answer different salient research questions that remain pertinent based on prior literature, and especially the recently published Cochrane review on the topic¹⁸:

IPD review 1: BPD symptom severity and interpersonal functioning

1.1) What are the effects of different psychotherapies when compared with unspecific controls (e.g., treatment usual (TAU), wait-list (WL) or no-intervention (NI) and specific psychotherapeutic interventions for people with BPD on the primary outcomes: BPD symptom severity and interpersonal functioning?

1.2) What are the moderators of the differential efficacy between psychotherapy versus control conditions in reducing BPD symptom severity and increasing interpersonal functioning?

1.3) What are the prognostic factors and effect moderators associated with the secondary outcomes: Serious and non-serious adverse events.

IPD review 2: Quality of life and psychosocial functioning

2.1) What are the effects of different psychotherapies when compared with unspecific controls (e.g., TAU, WL or NI) and specific psychotherapeutic interventions for people with BPD on the primary outcomes quality of life and psychosocial functioning?

2.2) What are the moderators of the differential efficacy between psychotherapy versus controls in quality of life and psychosocial functioning?

2.3) What are the prognostic factors and effect moderators associated with the secondary outcomes: Serious and non-serious adverse events?

IPD review 3: Suicidality and self-harm.

3.1) What are the effects of different psychotherapies when compared with unspecific controls (e.g., TAU, WL or NI) and specific psychotherapeutic interventions for people with BPD on the primary outcomes: Suicidality and self-harm?

3.2) What are the moderators of the differential efficacy between psychotherapy versus controls in reducing suicidality and non-suicidal risk behaviour?

3.3) What are the prognostic factors and effect moderators associated with the secondary outcomes: Serious and non-serious adverse events?

Method and analysis

General approach

The current protocol follows the general guidance provided as part of the Preferred Reporting Items for Systematic Reviews and Meta-Analyses (PRISMA)-IPD statement⁶⁰ (see checklist S1 in supplemental material).

Search criteria

To meet our inclusion criteria, at least 70% of participants in a trial are required to have a formal diagnosis of BPD according to DSM-III-R and onwards.¹ We will include trials with subsamples of people with BPD when data is provided separately on BPD participants. We will not include trials that focus on people with mental impairment, organic brain disorder, dementia or other severe neurologic/neurodevelopmental diseases or people with medical health issues, e.g., cancer or HIV.

The search will not be limited by language, year of publication or type of publication. We will seek translation of relevant sections of articles that are not in English.

Search method for identification of studies

Our search strategy for eligible studies will be based on the searches conducted in the prior Cochrane review on psychological therapies for BPD.¹⁸ These searches will be updated with a top-up search which is described in detail below (see supplemental material S2 for search string).

Databases

We will search for eligible studies in the following 22 databases and registries: Cochrane Central Register of Controlled Trials, MEDLINE Ovid, Embase Ovid, CINAHL EBSCOhost, PsycINFO Ovid, ERIC EBSCOhost, BIOSIS Previews, Web of Science Core Collection Clarivate Analytics, Sociological Abstracts ProQuest, LILACS, OpenGrey, JISC Library Hub Discover (previously COPAC), Proquest Dissertations and Theses Global, DART Europe E-Theses Portal, Networked Digital Library of Theses and Dissertations (NDLTD), Australian New Zealand Clinical Trials Registry, Clinicaltrials.gov, EU Clinical Trials Register, Open Trials, ISRCTN Registry, Be Part of Research, WHO International Clinical Trials Registry Platform (ICTRP).

Types of studies

The studies that will be included in our search are randomised clinical trials (RCTs) that compare psychotherapeutic treatments for BPD with unspecific controls (e.g., TAU, WL, and NI) and specific psychotherapeutic treatments.

Population

The studies will include people of all ages, any gender, in any setting, with a formal, categorical diagnosis of BPD according to the Diagnostic and Statistical Manual of Mental Disorders (DSM) Third Edition (DSM-III; APA 1980), Third Edition Revised (DSM-III-R; APA 1987), Fourth Edition (DSM-IV; APA 1994), Fourth Edition Text Revision (DSM-IV-TR; APA 2000), and Fifth Edition (DSM-5; APA 2013), or the Emotionally unstable personality disorder, borderline type in International Classification of Diseases and Related Health Problems (ICD) 10th version (WHO 1993), with or without comorbid conditions.¹⁸

Intervention

We will search for well-defined theory driven psychological interventions regardless of theoretical orientation (e.g., psychodynamic therapy, cognitive behavioural therapy, systemic therapy or eclectic therapies designed for BPD treatment), in any kind of

treatment setting (e.g., inpatient, outpatient or day clinic) and mode (individual, group or combined therapy),

Study selection

The paper titles and abstract identified in the top-up search will be independently screened by two members of the project group to remove those that are clearly ineligible. Similarly, two reviewers will read the full text articles independently. Disagreements about study inclusion will be resolved by discussion with a third review author. All trials excluded from the review after the full text level will be given reasons for exclusion.

Quality assessment

Study quality will be assessed by two reviewers from the project group who will independently evaluate the studies using the updated Cochrane Risk of Bias tool (RoB 2) in the quality assessment of included studies.⁶¹

Studies will be rated on each criterion with either 'low risk', 'high risk' or 'some concerns'. Each study as a whole will be rated according to its highest risk of bias in any of the assessed domains. i.e., if any domain is judged as having a high risk of bias, the whole study will be classified as "high risk of bias". We will assess the following domains: 1) bias arising from the randomisation process, 2) bias due do deviations from the intended interventions, 3) bias due to missing outcome data, 4) bias due to measurement of the outcome, and 5) bias due to selective reporting.⁵⁹

Data collection process

To be able to get raw data from the included RCTs, we will obtain contact information through the included publications or by an online search. We will contact the authors of each included RCT and provide them with the IPD review protocol and a cover letter explaining what the study is about. If we receive no response, we will send a reminder after one week and again after one month before excluding the trial for unavailability.

IPD-BPD consortium

All RCT authors will be invited to be part of an IPD-BPD consortium that the project group will establish. The name of this consortium will be "IPD-BPD". The aim of this taskforce is to support the project, make it easier to have authors participate, to increase awareness within the public and clinical community, and to help with dissemination of results. All RCT authors will be invited to be co-authors of the IPD reviews.

Developing the IPD-BPD database

IPD will be extracted from all included RCTs where the authors are willing to share their data. The IPD will be exported and integrated into a spreadsheet. A template spreadsheet will be created and pilot-tested. We will need data from all randomised patients (intention-to-treat samples) of all included trials. We will make a list of variables that we need and send this to the authors of the included trials. Furthermore, we will ask for the formal data codes and time points at which data was collected.

Raw data (de-identified data) can be transferred by a secure electronic transfer. The data sent from authors will be checked for completeness and accuracy. We will compare the participant numbers, descriptive data and outcome data to the reported data in the original

peer-reviewed article. If any irregularity is present, the issue will be discussed with the study authors for clarification. Raw datasets will be saved in their original formats and then exported into a common format. The data will be stored on a secure server. We will rename the variables for each study in a consistent manner. All individual datasets will be merged into one large IPD dataset that takes the study clusters into account.⁶²

Data items

Primary outcomes

Primary outcomes will be measured by the use of standardised psychometric rating scales. We will included both self-rated and observer-rated measures. If both are available we will prefer observer-rated.

IPD review 1:

1.1 BPD symptom severity, e.g., assessed by the Zanarini Rating Scale for Borderline Personality Disorder (Zan-BPD)⁶³, the Borderline Personality Disorder Severity Index, Fourth version (BPDSI-IV)⁶⁴, or the Clinical Global Impression Scale for people with Borderline Personality Disorder (CGI-BPD).⁶⁵

1.2 Interpersonal functioning, assessed by, for example, the Inventory of Interpersonal Problems⁶⁶ (IIP), or the relevant item or subscale on the Zan-BPD,⁶³ CGI-BPD,⁶⁵ BPDSI-IV.⁶⁴

IPD review 2:

2.1 Quality of life, e.g., assessed by the The Quality of Life Satisfaction and Enjoyment⁶⁷ or the EuroQol five-dimensional.⁶⁸

2.2 Psychosocial functioning, e.g., assessed by the Global Assessment Scale⁶⁹, the Global Assessment of Functioning Scale⁷⁰, or the Social Functioning Questionnaire.⁷¹

IPD review 3:

3.1 Self-harm, in terms of the proportion of participants with self-harming behaviour, or assessed by e.g., the Deliberate Self-harm Inventory⁷² or the Self-harm behaviour Questionnaire.⁷³

3.2 Suicide-related outcomes, e.g., assessed by the Suicidal Behaviours Questionnaire⁷⁴ or the Beck Scale for Suicidal Ideation⁷⁵, or in terms of the proportion of participants with suicidal acts.

Secondary outcomes

Adverse effects will be measured by the use of standardised psychometric rating scales, such as the Systematic Assessment for Treatment Emergent Events,⁷⁶ by laboratory values or spontaneous reporting. We will divide the reported adverse effects into severe and non-severe, according to the International Committee of Harmonization guidelines.⁷⁷ We will define serious adverse effects as any event that led to death, was life-threatening, required inpatient hospitalisation or prolongation of existing hospitalisation, resulted in persistent or significant disability, or any important medical event that may have

jeopardised the participant's health or required intervention to prevent one of the aforementioned outcomes occurring. We will consider all other adverse effects to be non-serious. Additionally, deterioration will be examined.

Effect predictors and moderators

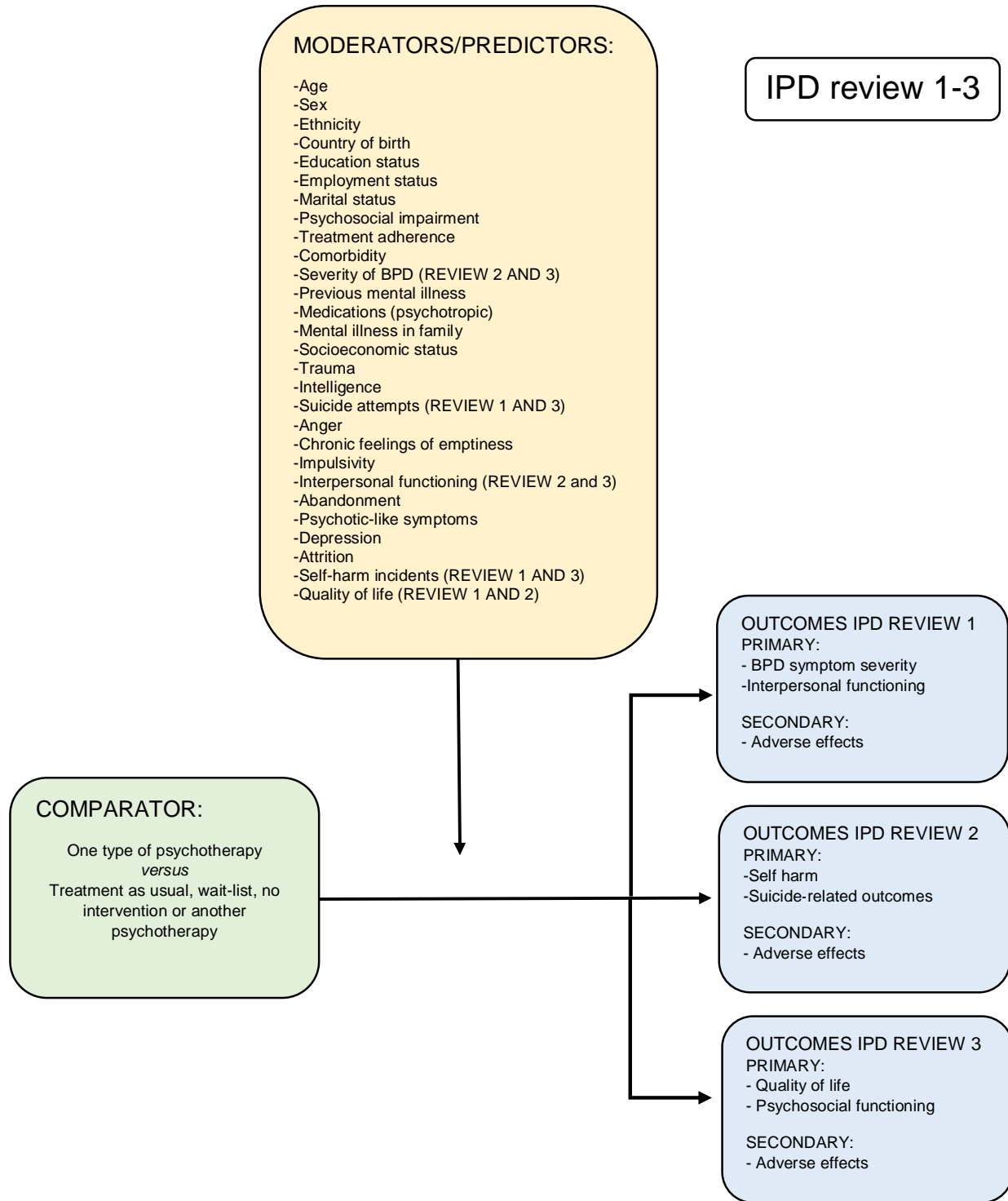
We want to know which patient characteristics predict a reduction of the primary outcomes for the three IPD reviews: IPD review 1: BPD symptom severity and interpersonal functioning. IPD review 2: Quality of life and psychosocial functioning, IPD review 3: Self-harm, suicidal behaviour, and regardless of treatment allocation (predictor variables).

In three IPD reviews, we aim to investigate which patient characteristics predict treatment response in terms of three sets of outcomes: See figure 1.

We also intend to identify moderators, i.e., variables which affect outcomes based on treatment allocation.⁷⁸ Moderators differentiate between the effects of two treatments and predictors refer to prognostic factors.⁷⁸

Patient characteristics will be included in the analyses, if they are consistently reported, available across datasets and justify inclusion based on prior literature that identifies them as potential predictors or moderators.⁷⁸ Such characteristics could be age at baseline, sex, ethnicity, country of birth, education status, employment status, marital status, severity of BPD, psychosocial impairment, treatment adherence, comorbidity, previous mental illness, medications (psychotropic), mental illness in family, socioeconomic status, trauma, IQ, suicide attempts, anger, chronic feelings of emptiness, impulsivity, interpersonal problems, abandonment, psychotic-like symptoms, depression and self-harm incidents. We will examine the published papers and verify which moderators are investigated. We will include all moderators that are investigated in at least two studies.

Figure 1: Comparisons, moderators and outcomes in IPD review 1-3.



Data analysis

Our primary meta-analytic method will be the one-stage random-effects approach, which is particularly suitable for investigating predictors and moderators compared with the two-stage method. The one-stage random-effects method is also less influenced by the expected small size of some of the studies included in the planned meta-analyses.⁷⁹

To identify predictors, we will use the one-stage model that accounts for interaction between covariates and treatment allocation. Covariates with statistical evidence for association with the outcome will be added in a unique global model. Significant association ($p < 0.05$) with the outcome in the global model will then be used to identify the predictors. Similarly, we will use a one-stage approach to identify moderators by investigating the interaction between selected covariates and the treatments, one covariate at the time.⁷⁸ To account for potential ecological bias, covariates will be transformed at study-level before analysis using the proper methodology.⁸⁰

Datasets will be checked for their completeness and integrity. To handle missing values, we will use multiple imputation under the missing at random assumption.⁸¹ Missing data will be imputed within each original study before data of the individual studies are pooled. A sensitivity analysis will be conducted using a pattern-mixture approach.⁸²

Heterogeneity in case-mix will be assessed using a membership model based on a multinomial logistic regression where study membership is the outcome. The derived c-statistics will reflect the difference in baseline characteristics and outcome.⁸³ As a certain level of heterogeneity is expected (e.g., due to differences in study populations, types of psychotherapy, or differences in the control group) a random-effects meta-analysis is chosen to account for these variations.

All analyses will be conducted using a well-established statistical platform providing ready-to-use packages and libraries to perform such analyses, like STATA.⁸⁴

Subgroup analyses

In addition, we will perform meta-analyses including only studies classified as 'low risk' of bias to assess the impact of studies of lower methodological quality and type of control conditions on the findings. When possible, a similar approach will be used to compare studies based on differences in the criteria for the risk of bias.⁸⁵

Difference between included and not-included studies in the IPD review

We will compare the dataset on the primary outcomes from the previously published Cochrane review¹⁸ with the data included in the present IPD reviews. If there is a discrepancy between the datasets, we will report both results. If necessary (depending on the outcome of subgroup analyses), we will execute the appropriate approach of combining the aggregated data and the IPD data to perform either: Meta-analyses of the aggregated data, meta-analyses of reconstructed IPD or hierarchical-related regressions.⁸⁶

Further development of the analysis plan

We will write a more detailed plan for the statistical analyses in the period from receiving the data to the actual data analyses. In that plan, we will specify how covariates will be

modelled (i.e., whether quantitative patient-level characteristics such as age is treated as continuous or categorical).

Patient and public involvement

We are collaborating with three Danish patient- and family alliance organisations addressing BPD and mental illness. Representatives from all three organisations have read and commented on the protocol. We are taking this approach to keep the project anchored and in proximity to clinical practice. Hereby we indirectly give means to individuals with BPD to influence the research process.

We will similarly invite the members of the patient and family alliance organisations to comment on the IPD reviews before publishing them. We do so to offer a sense of ownership and inclusion in the project.

Ethics and dissemination

Ethics approval and consent to participate

Approval by a research ethics committee is not required to conduct these reviews because they involves statistical analyses of anonymous data that have already been approved by the respective ethical committees originally assessing the included trials.

Publications

The three IPD reviews will be published in high impact factor journals. The results from the reviews will be presented at international conferences as well as in national seminars and conferences.

Authors' contributions

All authors contributed to writing this protocol.

Funding statement

This research was funded by Region Zealand Psychiatry.

Competing interests

Ole Jakob Storebø: Trained in child and adolescent psychoanalytic play therapy and trained in group psychoanalysis.

Johanne Pereira Ribeiro: No competing interests.

Mickey T. Kongerslev: Trained in mentalisation-based and psychodynamic psychotherapy, and conducts research and training in mentalisation-based therapy. Has written books on mentalisation-based therapy.

Jutta Stoffers-Winterling: Board-certified behaviour therapist, trained in dialectical behaviour therapy.

Mie Sedoc Jørgensen: Associated with the M-GAB trial, trained in dialectical behaviour therapy and psychodynamic therapy.

Klaus Lieb: Board-certified cognitive behaviour therapist with a special interest in schema therapy. KL has been involved in trials investigating inpatient dialectical behaviour therapy (Bohus 2004); and inpatient schema focused therapy (Reiss 2014).

Anthony Bateman: Receives honoraria for training in mentalisation-based treatment for BPD.

Nicolas Dérian: No competing interests.

Richard Kirubakaran: No competing interests.

Eirini Karyotaki: No competing interests.

Pim Cuijpers: No competing interests.

Erik Simonsen: PI of the M-GAB trial, trained in group psychoanalysis.

References

1. American Psychiatric Association. Diagnostic and Statistical Manual of Mental Disorders (DSM-5). Washington (DC): American Psychiatric Association 2013.
2. Khosravi M. Eating disorders among patients with borderline personality disorder: understanding the prevalence and psychopathology. *Journal of Eating Disorders* 2020;8(1) doi: ARTN 38 10.1186/s40337-020-00314-3
3. Shah R, Zanarini MC. Comorbidity of Borderline Personality Disorder: Current Status and Future Directions. *Psychiatr Clin North Am* 2018;41(4):583-93. doi: 10.1016/j.psc.2018.07.009 [published Online First: 2018/11/19]
4. Tomko RL, Trull TJ, Wood PK, et al. Characteristics of borderline personality disorder in a community sample: comorbidity, treatment utilization, and general functioning. *J Pers Disord* 2014;28(5):734-50. doi: 10.1521/pedi_2012_26_093 [published Online First: 2014/09/24]
5. Gunderson JG, Herpertz SC, Skodol AE, et al. Borderline personality disorder. *Nature Reviews Disease Primers* 2018;4(1):1-20.
6. Bailey RC, Grenyer BF. Supporting a person with personality disorder: a study of carer burden and well-being. *J Pers Disord* 2014;28(6):796-809. doi: 10.1521/pedi_2014_28_136 [published Online First: 2014/04/03]
7. Guillen V, Diaz-Garcia A, Mira A, et al. Interventions for Family Members and Carers of Patients with Borderline Personality Disorder: A Systematic Review. *Fam Process* 2020 doi: 10.1111/famp.12537 [published Online First: 2020/04/19]
8. Cailhol L, Thalamas C, Garrido C, et al. Mental health service utilization among borderline personality disorder patients inpatient. *Encephale-Revue De Psychiatrie Clinique Biologique Et Therapeutique* 2015;41(2):115-22. doi: 10.1016/j.encep.2014.10.008
9. Hörz S, Zanarini MC, Frankenburg FR, et al. Ten-year use of mental health services by patients with borderline personality disorder and with other axis II disorders. *Psychiatric Services* 2010;61(6):612-16.
10. Winsper C. Borderline personality disorder: course and outcomes across the lifespan. *Curr Opin Psychol* 2020;37:94-97. doi: 10.1016/j.copsy.2020.09.010 [published Online First: 2020/10/23]
11. Schneider F, Erhart M, Hewer W, et al. Mortality and Medical Comorbidity in the Severely Mentally Ill: A German Registry Study. *Deutsches Ärzteblatt International* 2019;116(23-24):405.
12. Fok MLY, Hayes RD, Chang CK, et al. Life expectancy at birth and all-cause mortality among people with personality disorder. *Journal of Psychosomatic Research* 2012;73(2):104-07. doi: 10.1016/j.jpsychores.2012.05.001
13. Gunderson JG. Borderline personality disorder. *New England Journal of Medicine* 2011;364(21):2037-42.
14. Gunderson JG, Stout RL, McGlashan TH, et al. Ten-year course of borderline personality disorder: psychopathology and function from the Collaborative Longitudinal Personality Disorders study. *Arch Gen Psychiatry* 2011;68(8):827-37. doi: 10.1001/archgenpsychiatry.2011.37 [published Online First: 2011/04/06]
15. Winsper C, Bilgin A, Thompson A, et al. The prevalence of personality disorders in the community: a global systematic review and meta-analysis. *Br J Psychiatry* 2020;216(2):69-78. doi: 10.1192/bjp.2019.166 [published Online First: 2019/07/13]
16. Torgersen S. Epidemiology. In: Widiger TA, ed. *The Oxford Handbook of Personality Disorders*. New York (NY): Oxford University Press 2012:186-205.
17. Hastrup LH, Jennum P, Ibsen R, et al. Societal costs of Borderline Personality Disorders: a matched-controlled nationwide study of patients and spouses. *Acta Psychiatr Scand* 2019;140(5):458-67. doi: 10.1111/acps.13094 [published Online First: 2019/09/05]

18. Storebo OJ, Stoffers-Winterling JM, Vollm BA, et al. Psychological therapies for people with borderline personality disorder. *Cochrane Database Syst Rev* 2020;5(5):CD012955. doi: 10.1002/14651858.CD012955.pub2 [published Online First: 2020/05/06]
19. Keefe JR, Kim TT, DeRubeis RJ, et al. Treatment selection in borderline personality disorder between dialectical behavior therapy and psychodynamic psychiatric management. *Psychological Medicine* 2020:1-9.
20. Barber JP, Solomonov N. Toward a personalized approach to psychotherapy outcome and the study of therapeutic change. *World Psychiatry* 2019;18(3):291-92. doi: 10.1002/wps.20666 [published Online First: 2019/09/10]
21. Goodman M, Patil U, Steffel L, et al. Treatment utilization by gender in patients with borderline personality disorder. *J Psychiatr Pract* 2010;16(3):155-63. doi: 10.1097/01.pra.0000375711.47337.27 [published Online First: 2010/05/21]
22. Stoffers-Winterling J, Storebo OJ, Lieb K. Pharmacotherapy for Borderline Personality Disorder: an Update of Published, Unpublished and Ongoing Studies. *Curr Psychiatry Rep* 2020;22(8):37. doi: 10.1007/s11920-020-01164-1 [published Online First: 2020/06/07]
23. Ansell EB, Sanislow CA, McGlashan TH, et al. Psychosocial impairment and treatment utilization by patients with borderline personality disorder, other personality disorders, mood and anxiety disorders, and a healthy comparison group. *Compr Psychiatry* 2007;48(4):329-36. doi: 10.1016/j.comppsy.2007.02.001 [published Online First: 2007/06/15]
24. Zanarini MC, Frankenburg FR, Reich DB, et al. Rates of psychiatric treatment reported by patients with borderline personality disorder and other personality disorders over 16 years of prospective follow-up. *Psychiatric Services* 2015;66(1):15-20.
25. Simonsen S, Bateman A, Bohus M, et al. European guidelines for personality disorders: past, present and future. *Borderline Personal Disord Emot Dysregul* 2019;6(1):9. doi: 10.1186/s40479-019-0106-3 [published Online First: 2019/05/31]
26. Bateman AW, Gunderson J, Mulder R. Treatment of personality disorder. *Lancet* 2015;385(9969):735-43. doi: Doi 10.1016/S0140-6736(14)61394-5
27. Kongerslev MT, Chanen AM, Simonsen E. Personality disorder in childhood and adolescence comes of age: a review of the current evidence and prospects for future research. *Scandinavian Journal of Child and Adolescent Psychiatry and Psychology* 2015;3(1):31-48.
28. Clarkin JF. An integrated approach to psychotherapy techniques for patients with personality disorder. *J Pers Disord* 2012;26(1):43-62. doi: 10.1521/pedi.2012.26.1.43 [published Online First: 2012/03/01]
29. De Groot ER, Verheul R, Trijsburg RW. An integrative perspective on psychotherapeutic treatments for borderline personality disorders. *Journal of Personality Disorders* 2008;22(4):332-52.
30. Livesley WJ. Moving beyond specialized therapies for borderline personality disorder: the importance of integrated domain-focused treatment. *Psychodyn Psychiatry* 2012;40(1):47-74. doi: 10.1521/pdps.2012.40.1.47 [published Online First: 2012/09/26]
31. Weinberg I, Ronningstam E, Goldblatt MJ, et al. Common factors in empirically supported treatments of borderline personality disorder. *Curr Psychiatry Rep* 2011;13(1):60-8. doi: 10.1007/s11920-010-0167-x [published Online First: 2010/11/09]
32. Iliakis EA, Sonley AK, Ilagan GS, et al. Treatment of borderline personality disorder: is supply adequate to meet public health needs? *Psychiatric Services* 2019;70(9):772-81.
33. Storebo OJ, Stoffers-Winterling JM, Vollm BA, et al. Psychological therapies for people with borderline personality disorder. *Cochrane Database of Systematic Reviews* 2018(2)
34. Linehan MM. *Cognitive-Behavioral Treatment of Borderline Personality Disorder*. New York (NY): Guilford Press 1993.
35. Linehan MM. *DBT® Skills Training Manual*. New York (NY): Guilford Press 2015.
36. Bateman A, Fonagy P. *Psychotherapy for Borderline Personality Disorder: Mentalisation Based Treatment*. Oxford (UK): Oxford University Press 2004.
37. Bateman A, Fonagy P. *Mentalization-Based Treatment for Borderline Personality Disorders: A Practical Guide*. Oxford (UK): Oxford University Press 2006.

38. Bateman A, Fonagy P. *Mentalization-Based Treatment for Personality Disorders: A Practical Guide*. Oxford (UK): Oxford University Press 2016.
39. Black DW, Blum N, St John D. STEPPS: a practical, evidence-based way to treat borderline personality disorder. *Current Psychiatry* 2009;8:31-37.
40. Clarkin JF, Yeomans FE, Kernberg OF. *Psychotherapy for Borderline Personality*. New York (NY): John Wiley & Sons, Inc. 1999.
41. Yeomans FE, Clarkin JF, Kernberg OF. *Transference-Focused Psychotherapy for Borderline Personality Disorder: A Clinical Guide*. Arlington (VA): American Psychiatric Publishing 2015.
42. Chanen AM, McCutcheon L, Kerr IB. HYPE: a cognitive analytic therapy-based prevention and early intervention programme for borderline personality disorder. In: Sharp C TJL, ed. *Handbook of Borderline Personality Disorder in Children and Adolescents*. New York (NY): Springer 2014:361-83.
43. Ryle A. *Cognitive Analytic Therapy and Borderline Personality Disorder: The Model and the Method*. Chichester (UK): John Wiley & Sons, Inc. 1997.
44. Arntz A, Van Genderen H. *Schema Therapy for Borderline Personality Disorder*. Chichester (UK): Wiley-Blackwell 2009.
45. Young JE, Klosko JS, Weishaar ME. *Schema Therapy: A Practitioner's Guide*. New York (NY): Guilford Press 2003.
46. Navani N, Fisher DJ, Tierney JF, et al. The Accuracy of Clinical Staging of Stage I-IIIa Non-Small Cell Lung Cancer An Analysis Based on Individual Participant Data. *Chest* 2019;155(3):502-09. doi: 10.1016/j.chest.2018.10.020
47. Herzog P, Feldmann M, Voderholzer U, et al. Drawing the borderline: Predicting treatment outcomes in patients with borderline personality disorder. *Behaviour Research and Therapy* 2020;133:103692.
48. Larun L, Odgaard-Jensen J, Brurberg K, et al. Exercise therapy for chronic fatigue syndrome (individual patient data)(Protocol). 2018
49. Hiles SA, McDonald VM, Guilhermino M, et al. Does maintenance azithromycin reduce asthma exacerbations? An individual participant data meta-analysis. *European Respiratory Journal* 2019;54(5)
50. Panagioti M, Bower P, Kontopantelis E, et al. Association between chronic physical conditions and the effectiveness of collaborative care for depression: an individual participant data meta-analysis. *JAMA psychiatry* 2016;73(9):978-89.
51. Tucker KL, Sheppard JP, Stevens R, et al. Self-monitoring of blood pressure in hypertension: A systematic review and individual patient data meta-analysis. *PLoS Med* 2017;14(9):e1002389. doi: 10.1371/journal.pmed.1002389 [published Online First: 2017/09/20]
52. Boschloo L, Bekhuis E, Weitz ES, et al. The symptom-specific efficacy of antidepressant medication vs. cognitive behavioral therapy in the treatment of depression: results from an individual patient data meta-analysis. *World Psychiatry* 2019;18(2):183-91. doi: 10.1002/wps.20630 [published Online First: 2019/05/07]
53. Cuijpers P, Weitz E, Twisk J, et al. Gender as Predictor and Moderator of Outcome in Cognitive Behavior Therapy and Pharmacotherapy for Adult Depression: An "Individual Patient Data" Meta-Analysis. *Depression and Anxiety* 2014;31(11):941-51. doi: 10.1002/da.22328
54. Driessen E, Dekker JJM, Peen J, et al. The efficacy of adding short-term psychodynamic psychotherapy to antidepressants in the treatment of depression: A systematic review and meta-analysis of individual participant data. *Clin Psychol Rev* 2020;80:101886. doi: 10.1016/j.cpr.2020.101886 [published Online First: 2020/07/11]
55. Furukawa TA, Efthimiou O, Weitz ES, et al. Cognitive-Behavioral Analysis System of Psychotherapy, Drug, or Their Combination for Persistent Depressive Disorder: Personalizing the Treatment Choice Using Individual Participant Data Network

- Metaregression. *Psychotherapy and Psychosomatics* 2018;87(3):140-53. doi: 10.1159/000489227
56. Karyotaki E, Ebert DD, Donkin L, et al. Do guided internet-based interventions result in clinically relevant changes for patients with depression? An individual participant data meta-analysis. *Clinical psychology review* 2018;63:80-92.
 57. Karyotaki E, Kemmeren L, Riper H, et al. Is self-guided internet-based cognitive behavioural therapy (iCBT) harmful? An individual participant data meta-analysis. *Psychological medicine* 2018;48(15):2456-66.
 58. Riley RD, Lambert PC, Abo-Zaid G. Meta-analysis of individual participant data: rationale, conduct, and reporting. *Bmj* 2010;340:c221.
 59. Higgins JPT, Thomas J, Chandler J, et al. *Cochrane Handbook for Systematic Reviews of Interventions*. Chichester (UK): John Wiley & Sons 2019.
 60. Stewart LA, Clarke M, Rovers M, et al. Preferred Reporting Items for a Systematic Review and Meta-analysis of Individual Participant Data The PRISMA-IPD Statement. *Jama-Journal of the American Medical Association* 2015;313(16):1657-65. doi: 10.1001/jama.2015.3656
 61. Sterne JAC, Savovic J, Page MJ, et al. RoB 2: a revised tool for assessing risk of bias in randomised trials. *BMJ* 2019;366:l4898. doi: 10.1136/bmj.l4898 [published Online First: 2019/08/30]
 62. Pufulete M, Higgins JP, Rogers CA, et al. Protocol for a systematic review and individual participant data meta-analysis of B-type natriuretic peptide-guided therapy for heart failure. *Syst Rev* 2014;3(1):41. doi: 10.1186/2046-4053-3-41 [published Online First: 2014/06/03]
 63. Zanarini MC, Vujanovic AA, Parachini EA, et al. Zanarini Rating Scale for Borderline Personality Disorder (ZAN-BPD): a continuous measure of DSM-IV borderline psychopathology. *J Pers Disord* 2003;17(3):233-42. doi: 10.1521/pedi.17.3.233.22147 [published Online First: 2003/07/04]
 64. Amtz A, van den Hoorn M, Cornelis J, et al. Reliability and validity of the borderline personality disorder severity index. *J Pers Disord* 2003;17(1):45-59. doi: 10.1521/pedi.17.1.45.24053 [published Online First: 2003/03/28]
 65. Perez V, Barrachina J, Soler J, et al. The clinical global impression scale for borderline personality disorder patients (CGI-BPD): a scale sensible to detect changes. *Actas Esp Psiquiatr* 2007;35(4):229-35. [published Online First: 2007/06/27]
 66. Horowitz LM, Rosenberg SE, Baer BA, et al. Inventory of interpersonal problems: psychometric properties and clinical applications. *J Consult Clin Psychol* 1988;56(6):885-92. doi: 10.1037//0022-006x.56.6.885 [published Online First: 1988/12/01]
 67. Ritsner M, Kurs R, Gibel A, et al. Validity of an abbreviated quality of life enjoyment and satisfaction questionnaire (Q-LES-Q-18) for schizophrenia, schizoaffective, and mood disorder patients. *Qual Life Res* 2005;14(7):1693-703. doi: 10.1007/s11136-005-2816-9 [published Online First: 2005/08/27]
 68. Herdman M, Gudex C, Lloyd A, et al. Development and preliminary testing of the new five-level version of EQ-5D (EQ-5D-5L). *Qual Life Res* 2011;20(10):1727-36. doi: 10.1007/s11136-011-9903-x [published Online First: 2011/04/12]
 69. Endicott J, Spitzer RL, Fleiss JL, et al. The global assessment scale. A procedure for measuring overall severity of psychiatric disturbance. *Archives of General Psychiatry* 1976;33(6):766-71.
 70. American Psychiatric Association. *Diagnostic and Statistical Manual of Mental Disorders (DSM-III-R)*. Washington (DC): American Psychiatric Association 1987.
 71. Tyrer P, Nur U, Crawford M, et al. The social functioning questionnaire: A rapid and robust measure of perceived functioning. *International Journal of Social Psychiatry* 2005;51(3):265-75. doi: 10.1177/0020764005057391
 72. Gratz KL. Measurement of deliberate self-harm: Preliminary data on the deliberate self-harm inventory. *Journal of Psychopathology and Behavioral Assessment* 2001;23(4):253-63. doi: Doi 10.1023/A:1012779403943

73. Guttierrez PM, Osman A, Barrios FX, et al. Development and initial validation of the Self-Harm Behavior Questionnaire. *Journal of Personality Assessment* 2001;77(3):475-90.
74. Osman A, Bagge CL, Gutierrez PM, et al. The Suicidal Behaviors Questionnaire-Revised (SBQ-R): validation with clinical and nonclinical samples. *Assessment* 2001;8(4):443-54. doi: 10.1177/107319110100800409 [published Online First: 2002/01/12]
75. Beck AT, Kovacs M, Weissman A. Assessment of suicidal intention: the Scale for Suicide Ideation. *Journal of Consulting and Clinical Psychology* 1979;47(2):343-52.
76. Levine J, Schooler NR. SAFTEE: a technique for the systematic assessment of side effects in clinical trials. *Psychopharmacol Bull* 1986;22(2):343-81. [published Online First: 1986/01/01]
77. International Council for Harmonisation Expert Working Group. International conference on harmonisation of technical requirements for registration of pharmaceuticals for human use. ICH harmonised tripartite guideline. Guideline for good clinical practice E6(R1). www.ich.org/fileadmin/Public_Web_Site/ICH_Products/Guidelines/Efficacy/E6/E6_R1_Guideline.pdf, 2011.
78. Breedvelt JF, Warren FC, Brouwer ME, et al. Individual participant data (IPD) meta-analysis of psychological relapse prevention interventions versus control for patients in remission from depression: a protocol. *BMJ Open* 2020;10(2):e034158. doi: 10.1136/bmjopen-2019-034158 [published Online First: 2020/02/16]
79. Burke DL, Ensor J, Riley RD. Meta-analysis using individual participant data: one-stage and two-stage approaches, and why they may differ. *Statistics in Medicine* 2017;36(5):855-75. doi: 10.1002/sim.7141
80. Belias M, Rovers MM, Reitsma JB, et al. Statistical approaches to identify subgroups in meta-analysis of individual participant data: a simulation study. *BMC Med Res Methodol* 2019;19(1):183. doi: 10.1186/s12874-019-0817-6 [published Online First: 2019/09/04]
81. Janssen KJM, Donders ART, Harrell FE, et al. Missing covariate data in medical research: To impute is better than to ignore. *Journal of Clinical Epidemiology* 2010;63(7):721-27. doi: 10.1016/j.jclinepi.2009.12.008
82. Little RJ, D'Agostino R, Cohen ML, et al. The prevention and treatment of missing data in clinical trials. *N Engl J Med* 2012;367(14):1355-60. doi: 10.1056/NEJMSr1203730 [published Online First: 2012/10/05]
83. Steyerberg EW, Nieboer D, Debray TPA, et al. Assessment of heterogeneity in an individual participant data meta-analysis of prediction models: An overview and illustration. *Stat Med* 2019;38(22):4290-309. doi: 10.1002/sim.8296 [published Online First: 2019/08/03]
84. StataCorp L. Stata statistical software: release 16. College Station, TX. 2019
85. de Zoete A, de Boer MR, van Tulder MW, et al. Rational and design of an individual participant data meta-analysis of spinal manipulative therapy for chronic low back pain-a protocol. *Syst Rev* 2017;6(1):21. doi: 10.1186/s13643-017-0413-y [published Online First: 2017/01/27]
86. Debray TP, Moons KG, van Valkenhoef G, et al. Get real in individual participant data (IPD) meta-analysis: a review of the methodology. *Res Synth Methods* 2015;6(4):293-309. doi: 10.1002/jrsm.1160 [published Online First: 2015/08/20]