



24 **ABSTRACT**

25 **Background:** Whether diabetes is associated with COVID-19-related mortality remains unclear.

26 **Methods:** In this retrospective case-series study we examined the risk of death associated with  
27 self-reported diabetes in symptomatic adult patients with laboratory-confirmed COVID-19 who  
28 were identified through the System of Epidemiological Surveillance of Viral Respiratory Disease  
29 in Mexico from January 1 through November 4, 2020. Survival time was right-censored at 28  
30 days of follow-up.

31 **Results:** Among 757,210 patients with COVID-19 included in the study, 120,476 (16%) had  
32 diabetes and 80,616 died. Patients with diabetes had a 49% higher relative risk of death than  
33 those without diabetes (Cox proportional-hazard ratio; 1.49 (95% confidence interval [CI], 1.47-  
34 1.52), adjusting for age, sex, smoking habit, obesity, hypertension, immunodeficiency, and  
35 cardiovascular, pulmonary, and chronic renal disease. The relative risk of death associated with  
36 diabetes decreased with age ( $P=0.004$ ). The hazard ratios were 1.66 (1.58-1.74) in outpatients  
37 and 1.14 (1.12-1.16) in hospitalized patients. The 28-day survival for inpatients with and without  
38 diabetes was, respectively, 73.5% and 85.2% for patients 20-39 years of age; 66.6% and 75.9%  
39 for patients 40-49 years of age; 59.4% and 66.5% for patients 50-59 years of age; 50.1% and  
40 54.6% for patients 60-69 years of age; 42.7% and 44.6% for patients 70-79 years of age; and  
41 38.4% and 39.0% for patients 80 years of age or older. In patients without COVID-19 (878,840),  
42 the adjusted hazard ratio for mortality was 1.78 (1.73-1.84).

43 **Conclusion:** In symptomatic adult patients with COVID-19 in Mexico, diabetes was associated  
44 with higher mortality. This association decreased with age.

45

## 46 INTRODUCTION

47 As of November 15, 2020, over 53.7 million people worldwide have been infected with SARS-  
48 CoV-2, the virus that causes COVID-19. Nearly 1.3 million people have died due to COVID-19.<sup>1</sup>  
49 Patients with COVID-19 who have diabetes are at increased risk of hospitalization,<sup>2,3</sup> admission  
50 to intensive care unit,<sup>4</sup> and intubation,<sup>3,5</sup> compared with those without diabetes. Although  
51 diabetes is common in fatal cases of COVID-19,<sup>6-10</sup> whether diabetes is associated with COVID-  
52 19-related mortality remains unclear. Some studies have shown an association between diabetes  
53 and mortality in subjects with COVID-19,<sup>4,6,7,9-14</sup> but others have not confirmed this  
54 relationship.<sup>2,3,8,15-18</sup> These differences could be related to under-adjustment,<sup>9,12</sup> the relatively  
55 small number of subjects to estimate mortality risk,<sup>4,8,9,14,16,18</sup> the use of composite outcomes,<sup>2,12</sup>  
56 the analysis of severe COVID-19 cases or critically ill patients only,<sup>9,10,15,17</sup> the age of study  
57 participants and lack of stratification by age,<sup>3,6,7,10-12</sup> and the inclusion of unconfirmed cases.<sup>6,13</sup>  
58 Given the association of diabetes with severe COVID-19, specific guidelines for the treatment of  
59 patients with COVID-19 and diabetes have been proposed.<sup>19,20</sup> However, the association of  
60 diabetes with mortality across age groups in outpatients and hospitalized patients has not been  
61 well studied. Thus, clarification on this aspect may have clinical implications for risk  
62 stratification. The aim of the present study was to examine the risk of death associated with  
63 diabetes in symptomatic adult patients with COVID-19 confirmed by laboratory.

64

## 65 **METHODS**

### 66 **Study design and population**

67 We conducted a retrospective case-series study using data from a large convenience sample of  
68 symptomatic patients with viral respiratory disease who were screened for SARS-CoV-2 using  
69 real-time reverse-transcriptase–polymerase-chain-reaction assay on samples obtained through  
70 oropharyngeal or nasopharyngeal swabs.<sup>21</sup> Patients were identified through the System of  
71 Epidemiological Surveillance of Viral Respiratory Disease in Mexico from January 1 through  
72 November 4, 2020. We included patients who were admitted from January 1 through October 7,  
73 2020 in such a way that each patient had a 28-day follow-up unless the event (death) occurred  
74 first. We excluded patients younger than 20 years of age or coded as pregnant, and those who did  
75 not have test results for SARS-CoV-2 (Figure S1 in the Supplementary Appendix).

76 Since this study involved the analysis of publicly available de-identified data only, institutional-  
77 review-board review was not required, as outlined in the Federal Policy for the Protection of  
78 Human Subjects (detailed in 45 CFR part 46).<sup>22</sup>

### 79 **Study setting**

80 Mexico has an estimated population of 127.6 million.<sup>23</sup> Adults 65 years of age or older represent  
81 6.2% of the population.<sup>24</sup> In Mexico, the System of Epidemiological Surveillance of Viral  
82 Respiratory Disease keeps track of suspected cases of viral respiratory disease, including  
83 COVID-19 cases, through reports from 475 Viral Respiratory Disease Monitoring Units  
84 (USMER) and all healthcare centers (non-USMER) located nationwide. The USMER reports all  
85 suspected cases with severe respiratory symptoms but only 10% of all suspected cases with mild  
86 symptoms. The non-USMER reports all cases of severe acute respiratory infection.<sup>21</sup>

## 87 **Data source**

88 Data at the individual level were obtained from the publicly available COVID-19 online dataset  
89 updated daily by the Secretary of Health of Mexico  
90 ([https://www.gob.mx/salud/documentos/datos-abiertos-bases-historicas-direccion-general-de-](https://www.gob.mx/salud/documentos/datos-abiertos-bases-historicas-direccion-general-de-epidemiologia)  
91 [epidemiologia](https://www.gob.mx/salud/documentos/datos-abiertos-bases-historicas-direccion-general-de-epidemiologia)). All data on demographic and pre-existing comorbidities were obtained through a  
92 standardized questionnaire.<sup>21</sup>

## 93 **Definitions**

94 According to the guidelines from the Secretary of Health of Mexico, a suspected case of viral  
95 respiratory disease was defined as a subject who presented, in the last 10 days, cough, dyspnea,  
96 fever, or headache, and at least one of the following signs or symptoms: myalgias, arthralgias,  
97 odynophagia, chills, chest pain, rhinorrhea, polypnea, anosmia, dysgeusia, or conjunctivitis.<sup>21</sup>  
98 These guidelines, released on August 2020, are an update of the guidelines in which a suspected  
99 case of viral respiratory disease was defined as a subject who presented, in the last 7 days, cough,  
100 fever, or headache, accompanied with at least one of the following signs or symptoms: dyspnea,  
101 myalgias, arthralgias, odynophagia/sore throat, rhinorrhea, conjunctivitis, or chest pain.<sup>25</sup> In the  
102 present study, a COVID-19 case was defined as a patient with suspected viral respiratory disease  
103 who had SARS-CoV-2 infection confirmed by reverse-transcriptase–polymerase-chain-reaction  
104 test. Patients who tested negative for SARS-CoV-2 were referred to as non-COVID-19 cases,  
105 regardless of epidemiological association with COVID-19.

## 106 **Statistical analyses**

107 Incidence rates of death were expressed as cases per 100,000 person-days. We used Cox  
108 proportional-hazards regression to calculate the hazard ratio and 95% confidence intervals (CIs)

109 for mortality. There was no violation of proportional-hazards assumption. Survival time was  
110 right-censored at 28 days of follow-up from the admission date (date of the patient's visit).  
111 Multivariate analyses included adjustment for age, sex, smoking habit, obesity, hypertension,  
112 cardiovascular disease, chronic obstructive pulmonary disease, asthma, chronic kidney disease,  
113 and immunodeficiency. These variables were chosen based on our judgment as they have been  
114 associated with the severity of COVID-19 or mortality.<sup>13,26,27</sup> Cox regression models were  
115 adjusted for age using a five-knot restricted cubic spline fitting for age.<sup>28</sup> Analyses within each  
116 age group (20 to 39, 40 to 49, 50 to 59, 60 to 69, 70 to 79, and  $\geq 80$  years) were adjusted for age  
117 as a continuous variable. We tested for interactions between diabetes and age, diabetes and sex,  
118 and diabetes and type of patient care (outpatient vs. inpatient). The trends for the hazard ratios  
119 across age groups were tested using weighted linear regression. The probability weights were  
120 obtained from the inverse of the variance of the risk estimates. Since missing data among  
121 predictors included in our regression models represented less than 0.75%, missing data were not  
122 imputed. A complete-case analysis was performed. There were no missing data on age, sex, date  
123 of hospital admission, date of symptoms onset, or date of death.

124 We conducted three sensitivity analyses to assess the robustness of our findings: 1) full models  
125 with further adjustment for pneumonia, admission to intensive care unit, intubation, and time  
126 from symptoms onset to admission; 2) multilevel mixed-effect survival regression models to  
127 assess the possible effect of geographical differences on our risk estimates;<sup>29</sup> and 3) comparison  
128 of hazard ratios from analysis restricted to cases admitted before and after August 1 to address  
129 the possible influence of changes to the definition of suspected viral respiratory disease.<sup>21,25</sup> We  
130 conducted stratified analysis according to age and sex, in outpatients and inpatients. We used the

131 log-rank test to compare survival curves. All p values were two-sided. All analyses were  
132 performed using Stata 14 (StataCorp LP, TX).

133

134

## 135 **RESULTS**

136 From January 1 through November 4, 2020, 2,445,709 symptomatic patients with viral  
137 respiratory disease of all ages were reported. In total, 1,650,432 patients met the study inclusion  
138 criteria. We excluded 197 patients who had implausible admission dates relative to their date of  
139 death. We also excluded 14,185 patients who had missing data (0.86%) on diabetes, smoking  
140 habit, obesity, hypertension, cardiovascular disease, chronic obstructive pulmonary disease,  
141 asthma, chronic kidney disease, immunodeficiency, pneumonia, intubation, and admission to  
142 intensive care unit (Table S1). Main analysis involved 757,210 adult patients with laboratory-  
143 confirmed COVID-19. We also included 878,840 adult patients who tested negative for SARS-  
144 CoV-2. In patients with COVID-19, the median age was 44 years (IQR, 33-56); 120,476 (15.9%)  
145 had diabetes (Table 1). The proportion of patients with diabetes was 10.4% among outpatients  
146 (575,866) and 33.3% among inpatients (181,344).

147 In patients without COVID-19, the median age was 40 years (IQR, 30-51); 88,235 (10.0%) had  
148 diabetes (Table S2). The proportion of patients with diabetes was 7.6% among outpatients  
149 (791,899) and 32.2% among inpatients (86,941).

150 ***Association of diabetes with mortality.*** As of November 4, 2020, 80,616 deaths occurred among  
151 patients with COVID-19 who were followed up for 28 days (19,568,966 person-days of  
152 observation); 31,389 (38.9%) had diabetes. During the same period, 20,134 deaths occurred  
153 among patients without COVID-19 (24,172,062 person-days of observation); 7,923 (39.4%) had  
154 diabetes (Table S3).

155 In patients with COVID-19, the incidence rate of death was 1,153.1 cases per 100,000 person-  
156 days in those with diabetes and 292.2 cases per 100,000 person-days in those without diabetes. In



157 outpatients with COVID-19, the incidence rate of death in those with and without diabetes was,  
158 respectively, 194.1 and 39.2 cases per 100,000 person-days. In hospitalized patients with  
159 COVID-19, the incidence rate of death in those with and without diabetes was, respectively,  
160 2,552.8 and 1,735.3 cases per 100,000 person-days. In patients without COVID-19, the incidence  
161 rate of death was 344.9 cases per 100,000 person-days in those with diabetes and 55.8 cases per  
162 100,000 person-days in those without diabetes.

163 Among COVID-19 cases, our adjusted Cox proportional-hazards regression analysis showed that  
164 patients with diabetes had a 49% higher relative risk of death than those without diabetes (hazard  
165 ratio: 1.49 (95% confidence interval [CI], 1.47-1.52) (Table 2). The association of diabetes with  
166 mortality was mediated by age, sex, and the type of patient care (outpatient vs. inpatient)  
167 (P<0.001 for all interactions). Men were at higher risk of death than women (hazard ratio: 1.65;  
168 95% CI, 1.63-1.68). Compared with subjects 50 to 59 years of age, those 70 to 79 years of age  
169 and those 80 years of age or older had 3-fold and 4-fold higher risk of death, respectively (Table  
170 S4). A slightly stronger association between diabetes and mortality was noted in women (hazard  
171 ratio: 1.64; 95% CI, 1.59-1.68) than in men (hazard ratio: 1.41; 95% CI, 1.38-1.44). We observed  
172 a stronger association between diabetes and mortality in outpatients (hazard ratio: 1.66; 95% CI,  
173 1.58-1.74) compared with that in hospitalized patients (hazard ratio: 1.14; 95% CI, 1.12-1.16)  
174 (Table 2). Diabetes was associated with lower survival probability in outpatients and inpatients,  
175 both in women and men (Figure 1).

176 In non-COVID-19 cases, the adjusted hazard ratio for mortality was 1.78 (95% CI, 1.73-1.84).  
177 This association was also stronger in outpatients (hazard ratio: 1.91; 95% CI, 1.68-2.18)  
178 compared with that in hospitalized patients (hazard ratio: 1.11; 95% CI, 1.07-1.14). The 28-day

179 survival for inpatients with diabetes who had COVID-19 was lower (53.4%) compared with that  
180 for those without COVID-19 (73.4%) (Figure 2).

181 ***Sensitivity and subgroup analyses.*** In COVID-19 cases, the association of diabetes with  
182 mortality persisted after further adjustment for pneumonia, admission to intensive care unit,  
183 intubation, and time from symptoms onset to admission (Table S5). Accounting for geographical  
184 location did not substantially affect our estimates of the risk of death for outpatients (hazard  
185 ratio: 1.62, 95% CI, 1.54-1.70) or inpatients (hazard ratio: 1.13, 95% CI, 1.12-1.15) with  
186 COVID-19. The updated guidelines to define suspected cases of viral respiratory disease did not  
187 have a substantial effect on the hazard ratios estimates for outpatients (before: 1.66, 95% CI,  
188 1.57-1.74; after: 1.63, 95% CI, 1.42-1.87) or inpatients (before: 1.14, 95% CI, 1.12-1.16; after:  
189 1.15, 95% CI, 1.10-1.19).

190 In stratified analysis among COVID-19 cases according to sex and age, diabetes was associated  
191 with higher mortality in all age groups, among women and men. We observed that the relative  
192 risk of death associated with diabetes decreased with age (Table 2) (trend test:  $P=0.004$ ). These  
193 trends were observed in women ( $P=0.006$ ) and men ( $P=0.007$ ) (Table S6). Although the relative  
194 risk of death decreased with age, the incidence rates of death were higher in older subjects (Table  
195 S7). The relative risk of death associated with diabetes decreased with age in outpatients (trend  
196 test:  $P=0.001$ ) and in hospitalized patients (trend test:  $P=0.006$ ) (Table S8).

197 In hospitalized patients with COVID-19, the probability of survival at 28 days of follow-up for  
198 those with diabetes compared with that among those without diabetes decreased as age increased.  
199 We did not observe substantial differences in survival between patients 70 years of age or older  
200 with diabetes and those without diabetes (Figure 3). The 28-day survival for inpatients with and  
201 without diabetes was, respectively, 73.5% and 85.2% for patients 20-39 years of age; 66.6% and

202 75.9% for patients 40-49 years of age; 59.4% and 66.5% for patients 50-59 years of age; 50.1%  
203 and 54.6% for patients 60-69 years of age; 42.7% and 44.6% for patients 70-79 years of age; and  
204 38.4% and 39.0% for patients 80 years of age or older. In hospitalized patients 60 years of age or  
205 older without COVID-19, we did not observe substantial differences in survival between patients  
206 with diabetes and those without diabetes (Figure S2).

207

208

209

210

211

212

213

214

215

216

217

218

219

220

## 221 **DISCUSSION**

222 Our analysis of a large population of symptomatic adult patients with COVID-19 in Mexico  
223 (>750,000) shows that those with diabetes have increased risk of death during a follow-up of 28  
224 days. The relative risk of death associated with diabetes was stronger in outpatients than in  
225 hospitalized patients, and decreased with age. However, the incidence rate of death was much  
226 higher in hospitalized patients than in outpatients, and increased with age.

227 Although the 28-day survival for hospitalized patients with diabetes in the youngest group (20 to  
228 39 years) was about 12 percentage points lower compared with that for those without diabetes,  
229 the survival difference between patients with diabetes and those without diabetes was less than 2  
230 percentage points in those 70 years of age or older (Figure 3). Lower hazard ratios for death  
231 associated with diabetes have been reported among older patients with COVID-19 in England<sup>30</sup>.  
232 Our study shows a detailed comparison of the association of diabetes with mortality across age  
233 groups in a Hispanic-Latino population in Mexico, a country that has one of the highest numbers  
234 of deaths in the world due to COVID-19.<sup>31</sup>

235 Previous studies have shown diabetes is very common in patients with COVID-19.<sup>26,32</sup> In our  
236 study, the proportion of patients with diabetes among hospitalized patients with COVID-19 was  
237 similarly high in those with and without COVID-19 (~30%). Among deceased patients, the  
238 proportion of patients with diabetes was also similar in both groups (~40%). Although some  
239 studies have detected an association between diabetes and mortality in subjects with COVID-  
240 19,<sup>4,6,7,9-13</sup> others have not found a significant association.<sup>2,3,8,15-18</sup> In our study, diabetes was  
241 associated with mortality in patients with COVID-19. However, this association was not stronger  
242 than that observed in patients without COVID-19. Our findings also raise concern that the  
243 association of diabetes with COVID-19-related mortality varies with age (Table 2). We observed

244 a modest association in patients 70 to 79 years of age. No association was observed in patients 80  
245 years of age or older. The latter age group represented 11% of all COVID-19-related deaths in  
246 our study (Table S3). Data from preliminary reports<sup>13,26,33</sup> suggest that 30-50% of the total  
247 number of COVID-19-related deaths occur in patients 80 years of age or older. Thus, our  
248 findings may help guide decisions when assessing the risk of death among patients with COVID-  
249 19 who have diabetes.

250 The present study has many strengths. The high number of fatal cases among patients with  
251 COVID-19 (>80,000 deaths) and the high number of patients who had diabetes (>120,000) in the  
252 population studied enabled us to conduct a stratified analysis according to age groups to obtain  
253 precise estimates of the association of diabetes with mortality. The association of diabetes with  
254 mortality across age groups in Latino populations has remained unknown. Our stratified analysis  
255 by age was performed in a population with a number of deaths that was 15 times higher than the  
256 number analyzed in a previous study conducted in a predominantly Caucasian population.<sup>30</sup> We  
257 also performed stratified analysis among outpatients and inpatients. We observed a substantial  
258 difference in the magnitude of the association of diabetes with mortality in outpatients (66%  
259 higher risk) and inpatients (14% higher risk) with COVID-19, suggesting this association is  
260 weaker in patients with severe COVID-19.

261 Limitations of this study include self-reported diabetes, unknown type of diabetes, and unknown  
262 diabetes status. The proportion of patients with diabetes in the overall population (with and  
263 without COVID-19) was 12.8%, slightly lower than the adult prevalence of diabetes in Mexico  
264 (15.2%).<sup>34</sup> Our regression models were not adjusted for ethnicity or clinical and laboratory  
265 variables since data were not available. Proper blood glucose control has been associated with  
266 lower COVID-19-related mortality.<sup>35</sup> Another limitation of our study is that we cannot exclude

267 the possibility that the number of deaths in patients who had COVID-19 could be underreported.  
268 Finally, since our analysis was restricted to patients who presented symptoms for suspected viral  
269 respiratory disease and only 10% of patients with mild symptoms of viral respiratory disease  
270 were reported to the surveillance system, our findings may not be generalizable to populations  
271 with asymptomatic or mild COVID-19.

272

273

274

275

276

277

278

279

280

281

282

283

284

285

286 **CONCLUSION**

287 In symptomatic adult patients with COVID-19 in Mexico, diabetes was associated with higher  
288 mortality. The relative risk of death associated with diabetes decreased with age.

289

290

291

292

293 **ACKNOWLEDGMENTS**

294 We thank the Secretary of Health of the Government of Mexico for providing free access to data  
295 on suspected cases of viral respiratory disease in Mexico.

296



297 **FUNDING**

298 No funding was received for this study.

299

300

301

302

303

304

305

306

307

308

309

310

311

312

313

314

315

316

317

318

319

320

321

322 **AUTHORSHIP CONFIRMATION STATEMENT**

323 OOW: study design, data collection, statistical analyses, data interpretation, final draft writing.

324 JPCB: contributed with study design and data interpretation. OOW and JPCB have reviewed and

325 approved the manuscript prior to submission.

326

327

328

329

330

331

332

333

334

335

336

337

338

339

340

341 **AUTHOR DISCLOSURE STATEMENTS**

342 Authors have nothing to disclose.

343

344

345

346

347

348

349

350

351

352

353

354

355

356

357

358

359 **REFERENCES**

- 360 1. WHO. COVID-19 Weekly Epidemiological Update. 15 November 2020. Available at:  
361 <https://www.who.int/emergencies/diseases/novel-coronavirus-2019/situation-reports>  
362 Published 2020 Accessed Nov 20, 2020.
- 363 2. Petrilli CM, Jones SA, Yang J, et al. Factors associated with hospital admission and  
364 critical illness among 5279 people with coronavirus disease 2019 in New York City:  
365 prospective cohort study. *BMJ* 2020;369:m1966.
- 366 3. Ioannou GN, Locke E, Green P, et al. Risk Factors for Hospitalization, Mechanical  
367 Ventilation, or Death Among 10131 US Veterans With SARS-CoV-2 Infection. *JAMA*  
368 *Netw Open* 2020;3:e2022310.
- 369 4. Kim L, Garg S, O'Halloran A, et al. Risk factors for intensive care unit admission and in-  
370 hospital mortality among hospitalized adults identified through the U.S. Coronavirus  
371 Disease 2019 (COVID-19)-Associated Hospitalization Surveillance Network (COVID-  
372 NET). *Clin Infect Dis* 2020.
- 373 5. Hur K, Price CPE, Gray EL, et al. Factors Associated With Intubation and Prolonged  
374 Intubation in Hospitalized Patients With COVID-19. *Otolaryngol Head Neck Surg*  
375 2020;163:170-8.
- 376 6. Barron E, Bakhai C, Kar P, et al. Associations of type 1 and type 2 diabetes with  
377 COVID-19-related mortality in England: a whole-population study. *Lancet Diabetes*  
378 *Endocrinol* 2020.
- 379 7. Tartof SY, Qian L, Hong V, et al. Obesity and mortality among patients diagnosed with  
380 COVID-19: Results from an integrated health care organization. *Ann Intern Med* 2020.

- 381 8. Zhou F, Yu T, Du R, et al. Clinical course and risk factors for mortality of adult  
382 inpatients with COVID-19 in Wuhan, China: a retrospective cohort study. *Lancet*  
383 2020;395:1054-62.
- 384 9. Yan Y, Yang Y, Wang F, et al. Clinical characteristics and outcomes of patients with  
385 severe covid-19 with diabetes. *BMJ Open Diabetes Res Care* 2020;8.
- 386 10. Grasselli G, Greco M, Zanella A, et al. Risk Factors Associated With Mortality Among  
387 Patients With COVID-19 in Intensive Care Units in Lombardy, Italy. *JAMA Intern Med*  
388 2020.
- 389 11. Bello-Chavolla OY, Bahena-Lopez JP, Antonio-Villa NE, et al. Predicting mortality due  
390 to SARS-CoV-2: A mechanistic score relating obesity and diabetes to COVID-19  
391 outcomes in Mexico. *J Clin Endocrinol Metab* 2020;105:2752-61.
- 392 12. Guan WJ, Liang WH, Zhao Y, et al. Comorbidity and its impact on 1590 patients with  
393 COVID-19 in China: a nationwide analysis. *Eur Respir J* 2020;55.
- 394 13. Williamson EJ, Walker AJ, Bhaskaran K, et al. Factors associated with COVID-19-  
395 related death using OpenSAFELY. *Nature* 2020;584:430-6.
- 396 14. Shang J, Wang Q, Zhang H, et al. The Relationship Between Diabetes Mellitus and  
397 COVID-19 Prognosis: A Retrospective Cohort Study in Wuhan, China. *Am J Med* 2020.
- 398 15. Cummings MJ, Baldwin MR, Abrams D, et al. Epidemiology, clinical course, and  
399 outcomes of critically ill adults with COVID-19 in New York City: a prospective cohort  
400 study. *Lancet* 2020;395:1763-70.
- 401 16. Wang L, He W, Yu X, et al. Coronavirus disease 2019 in elderly patients: Characteristics  
402 and prognostic factors based on 4-week follow-up. *J Infect* 2020;80:639-45.

- 403 17. Gupta S, Hayek SS, Wang W, et al. Factors Associated With Death in Critically Ill  
404 Patients With Coronavirus Disease 2019 in the US. *JAMA Intern Med* 2020.
- 405 18. Ciceri F, Castagna A, Rovere-Querini P, et al. Early predictors of clinical outcomes of  
406 COVID-19 outbreak in Milan, Italy. *Clin Immunol* 2020;217:108509.
- 407 19. Bornstein SR, Rubino F, Khunti K, et al. Practical recommendations for the management  
408 of diabetes in patients with COVID-19. *Lancet Diabetes Endocrinol* 2020;8:546-50.
- 409 20. Katulanda P, Dissanayake HA, Ranathunga I, et al. Prevention and management of  
410 COVID-19 among patients with diabetes: an appraisal of the literature. *Diabetologia*  
411 2020;63:1440-52.
- 412 21. Gobierno de México. Dirección General de Epidemiología. Lineamiento estandarizado  
413 para la vigilancia epidemiológica y por laboratorio de la enfermedad respiratoria viral.  
414 Agosto de 2020. Available at: [www.gob.mx/salud](http://www.gob.mx/salud) September 13, 2020 2020.
- 415 22. HHS. U.S. Department of Health & Human Services. Federal policy for the protection of  
416 human subjects. 2020 ([https://www.hhs.gov/ohrp/regulations-and-](https://www.hhs.gov/ohrp/regulations-and-policy/regulations/common-rule/index.html)  
417 [policy/regulations/common-rule/index.html](https://www.hhs.gov/ohrp/regulations-and-policy/regulations/common-rule/index.html)).
- 418 23. The World Bank. Data. 2020  
419 (<https://data.worldbank.org/indicator/SP.POP.TOTL?locations=MX>).
- 420 24. INEG. Perfil sociodemográfico. Estados Unidos Mexicanos. Censo de población vivienda  
421 2010. Aguascalientes, Mexico 2013.
- 422 25. Gobierno de México. Dirección General de Epidemiología. Lineamiento estandarizado  
423 para la vigilancia epidemiológica y por laboratorio de la enfermedad respiratoria viral.  
424 Abril de 2020. Available at: <https://coronavirusgobmx/wp->

- 425 [content/uploads/2020/04/Lineamiento\\_de\\_vigilancia\\_epidemiologica\\_de\\_enfermedad\\_re](#)  
426 [spiratoria-viralpdf](#) September 13, 2020 2020.
- 427 26. Richardson S, Hirsch JS, Narasimhan M, et al. Presenting Characteristics, Comorbidities,  
428 and Outcomes Among 5700 Patients Hospitalized With COVID-19 in the New York City  
429 Area. JAMA 2020;323:2052-9.
- 430 27. Wang L, Foer D, Bates DW, Boyce JA, Zhou L. Risk factors for hospitalization,  
431 intensive care, and mortality among patients with asthma and COVID-19. J Allergy Clin  
432 Immunol 2020;146:808-12.
- 433 28. Harrell FE. Regression modeling strategies: With applications to linear models, logistic  
434 regression, and survival analysis. New York: Springer; 2001.
- 435 29. Woolcott OO, Bergman RN. Mortality attributed to COVID-19 in high-altitude  
436 populations. High Alt Med Biol 2020. <https://doi.org/10.1089/ham.2020.0098>.
- 437 30. Dennis JM, Mateen BA, Sonabend R, et al. Type 2 Diabetes and COVID-19-Related  
438 Mortality in the Critical Care Setting: A National Cohort Study in England, March-July  
439 2020. Diabetes Care 2020.
- 440 31. WHO. COVID-19 Weekly Epidemiological Update. 18 October 2020. Available at:  
441 <https://www.who.int/emergencies/diseases/novel-coronavirus-2019/situation-reports>  
442 Published 2020 Accessed Oct 20, 2020.
- 443 32. Bode B, Garrett V, Messler J, et al. Glycemic Characteristics and Clinical Outcomes of  
444 COVID-19 Patients Hospitalized in the United States. J Diabetes Sci Technol  
445 2020;14:813-21.
- 446 33. Livingston E, Bucher K. Coronavirus Disease 2019 (COVID-19) in Italy. JAMA  
447 2020;323:1335.

- 448 34. International Diabetes Federation. IDF Diabetes Atlas. Ninth edition 2019. Brussels2019.
- 449 35. Zhu L, She ZG, Cheng X, et al. Association of Blood Glucose Control and Outcomes in  
450 Patients with COVID-19 and Pre-existing Type 2 Diabetes. Cell Metab 2020;31:1068-77  
451 e3.
- 452



**Table 1. Characteristics of study patients with COVID-19.**

<b>Characteristic</b>	<b>All (n=757,210)</b>	<b>With diabetes (n=120,476)</b>	<b>Without diabetes (n=636,734)</b>
Median age (IQR), years	44 (33-56)	58 (49-67)	42 (32-53)
Age distribution, n (%)			
20-39 years	296,881 (39.2)	9,586 (8.0)	287,295 (45.1)
40-49 years	169,645 (22.4)	22,103 (18.4)	147,542 (23.2)
50-59 years	138,707 (18.3)	34,444 (28.6)	104,263 (16.4)
60-69 years	86,446 (11.4)	30,884 (25.6)	55,562 (8.7)
70-79 years	45,352 (6.0)	17,243 (14.3)	28,109 (4.4)
≥80 years	20,179 (2.7)	6,216 (5.2)	13,963 (2.2)
Male sex, n (%)	394,832 (52.1)	63,431 (52.7)	331,401 (52.1)
Smoking habit, n (%)	57,451 (7.6)	9,433 (7.8)	48,018 (7.5)
Pneumonia, n (%)	140,819 (18.6)	45,895 (38.1)	94,924 (14.9)
<i>Pre-existing comorbidities, n (%)</i>			

Diabetes	120,476 (15.9)	--	--
Obesity	139,115 (18.4)	32,808 (27.2)	106,307 (16.7)
Hypertension	151,731 (20.0)	65,353 (54.3)	86,378 (13.6)
Cardiovascular disease	15,087 (2.0)	6,252 (5.2)	8,835 (1.4)
Chronic kidney disease	14,657 (1.9)	8,182 (6.8)	6,475 (1.0)
Chronic obstructive pulmonary disease	11,275 (1.5)	4,520 (3.8)	6,755 (1.1)
Asthma	19,260 (2.5)	3,251 (2.7)	16,009 (2.5)
Immunodeficiency	7,947 (1.1)	2,717 (2.3)	5,230 (0.8)
Any comorbidity including diabetes	316,917 (41.9)	--	--
Any comorbidity excluding diabetes	279,468 (36.9)	83,027 (68.9)	196,441 (30.9)
<b><i>Outcomes, n (%)</i></b>			
Outpatient	575,866 (76.1)	60,007 (49.8)	515,859 (81.0)
Hospitalized	181,344 (24.0)	60,469 (50.2)	120,875 (19.0)
Admitted to intensive care unit	15,501 (2.1)	5,409 (4.5)	10,092 (1.6)
Intubated	31,921 (4.2)	11,474 (9.5)	20,447 (3.2)
Died	80,616 (10.7)	31,389	49,227 (7.7)

		(26.1)	
<b><i>Time variables</i></b>			
Person-days of follow-up	19,568,966	2,722,253	16,846,713
Median number of days from symptoms onset to admission (IQR)	4 (2-6)	4 (2-7)	4 (2-6)
Median number of days from admission to death (IQR), days	6 (3-12)	6 (2-11)	7 (3-13)
Median number of days from symptoms onset to death (IQR), days	12 (7-18)	11 (7-17)	12 (7-18)

**Table 2. Association of diabetes with mortality among subjects with COVID-19. \***

Subgroup	Number of subjects	Hazard ratio (95% CI)	
		Unadjusted	Adjusted†
<b>All</b>	757,210	3.74 (3.69-3.80)	1.49 (1.47-1.52)
Women	362,378	4.73 (4.62-4.84)	1.64 (1.59-1.68)
Men	394,832	3.26 (3.20-3.32)	1.41 (1.38-1.44)
<b>Age group‡</b>			
20-39	296,881	6.92 (6.40-7.48)	3.12 (2.86-3.40)
40-49	169,645	3.30 (3.16-3.45)	2.33 (2.22-2.44)
50-59	138,707	2.16 (2.10-2.23)	1.74 (1.68-1.79)
60-69	86,446	1.57 (1.53-1.61)	1.41 (1.37-1.45)
70-79	45,352	1.26 (1.23-1.30)	1.20 (1.17-1.24)
≥80	20,179	1.15 (1.10-1.20)	1.11 (1.06-1.16)
<b>Outpatients</b>			
All	575,866	4.90 (4.69-5.12)	1.66 (1.58-1.74)
Women	291,969	6.31 (5.87-6.78)	1.86 (1.72-2.01)
Men	283,897	4.30 (4.06-4.54)	1.55 (1.46-1.64)
<b>Age group‡</b>			
20-39	273,871	6.08 (4.79-7.70)	2.65 (2.04-3.44)
40-49	138,404	3.44 (3.02-3.92)	2.41 (2.10-2.78)
50-59	95,355	2.49 (2.28-2.72)	1.98 (1.80-2.18)
60-69	44,181	1.86 (1.71-2.02)	1.59 (1.45-1.73)
70-79	17,268	1.45 (1.32-1.60)	1.33 (1.20-1.47)
≥80	6,787	1.22 (1.07-1.40)	1.17 (1.01-1.35)

<b>Inpatients</b>			
All	181,344	1.42 (1.40-1.44)	1.14 (1.12-1.16)
Women	70,409	1.51 (1.47-1.55)	1.17 (1.14-1.21)
Men	110,935	1.39 (1.36-1.42)	1.12 (1.09-1.14)
Age group†			
20-39	23,010	1.94 (1.79-2.11)	1.52 (1.40-1.66)
40-49	31,241	1.49 (1.43-1.56)	1.30 (1.24-1.36)
50-59	43,352	1.29 (1.25-1.33)	1.18 (1.14-1.22)
60-69	42,265	1.17 (1.14-1.20)	1.13 (1.10-1.16)
70-79	28,084	1.07 (1.04-1.11)	1.06 (1.02-1.09)
≥80	13,392	1.04 (0.99-1.09)	1.03 (0.98-1.08)

\* Hazard ratios with 95% confidence intervals (CIs) were calculated using the Cox proportional-hazards regression.

† Adjusted for age, sex, smoking habit, obesity, hypertension, cardiovascular disease, chronic obstructive pulmonary disease, asthma, chronic kidney disease, and immunodeficiency. A five-knot restricted cubic spline fitting was used for age.

‡ Hazard ratios were adjusted for age, sex, smoking habit, obesity, hypertension, cardiovascular disease, chronic obstructive pulmonary disease, asthma, chronic kidney disease, and immunodeficiency.

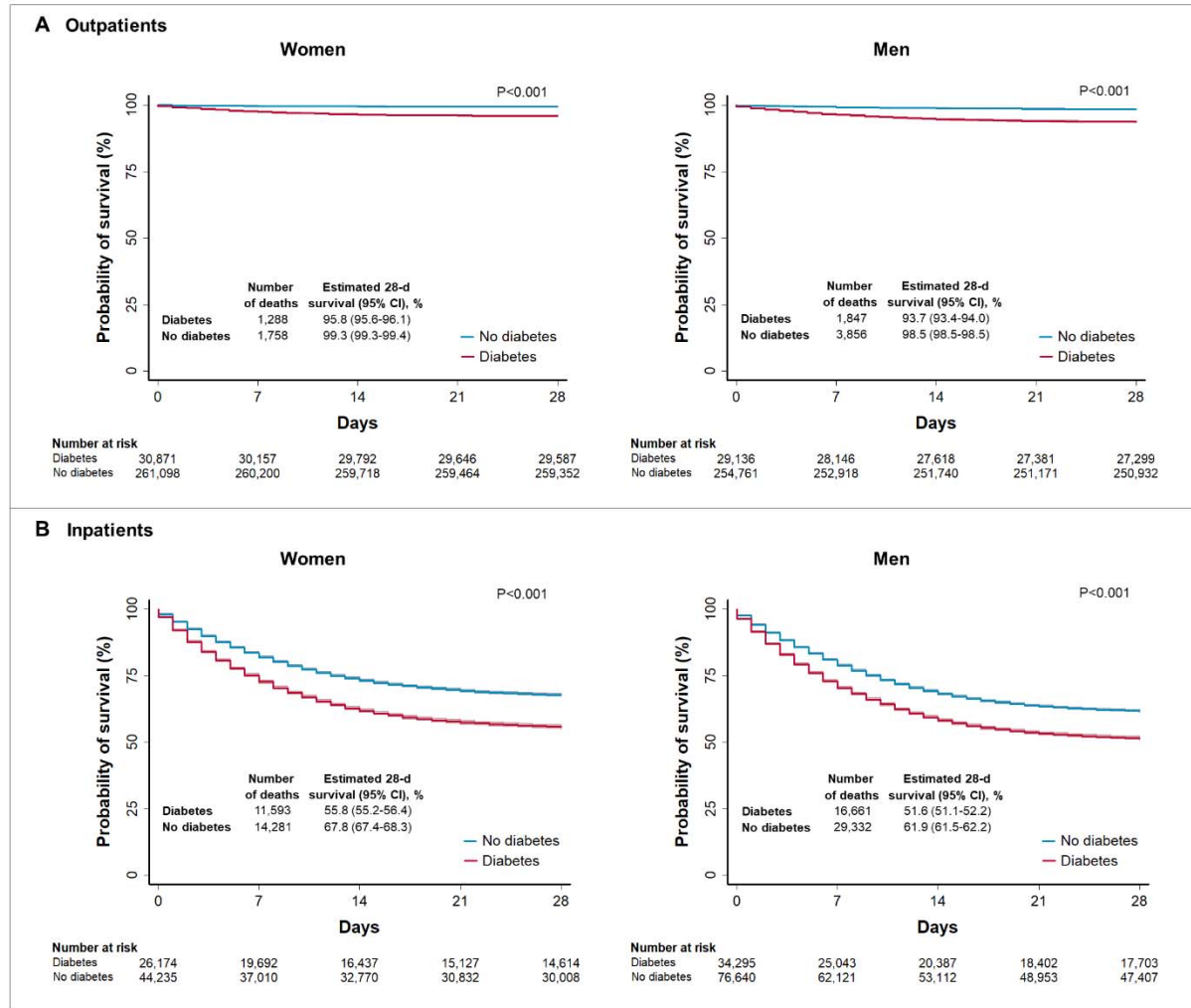
## FIGURE LEGENDS

**Figure 1. Unadjusted Kaplan-Meier survival curves among outpatients and inpatients with COVID-19 according to sex.** Panels show the probability of survival according to sex among adult patients with and without diabetes who had COVID-19. Subjects were admitted from January 1 through October 7, 2020, and followed up for 28 days unless the event (death) occurred first. The solid lines represent survival probabilities and the shaded area represent the 95% confidence intervals (CIs).

**Figure 2. Comparison of unadjusted Kaplan-Meier survival curves among subjects with and without COVID-19.** Panels show the probability of survival among outpatients (A) and inpatients (B) who had diabetes with and without COVID-19. Subjects were admitted from January 1 through October 7, 2020, and followed up for 28 days unless the event (death) occurred first. The solid lines represent survival probabilities and the shaded area represent the 95% confidence intervals (CIs).

**Figure 3. Unadjusted Kaplan-Meier survival curves according to age for inpatients with COVID-19.** Panels A to F show the probability of survival stratified according to age groups among adult inpatients with and without diabetes who had COVID-19. Subjects were admitted from January 1 through October 7, 2020, and followed up for 28 days unless the event (death) occurred first. The solid lines represent survival probabilities and the shaded area represent the 95% confidence intervals (CIs).

It is made available under a [CC-BY-NC-ND 4.0 International license](https://creativecommons.org/licenses/by-nc-nd/4.0/).



**Figure 1**

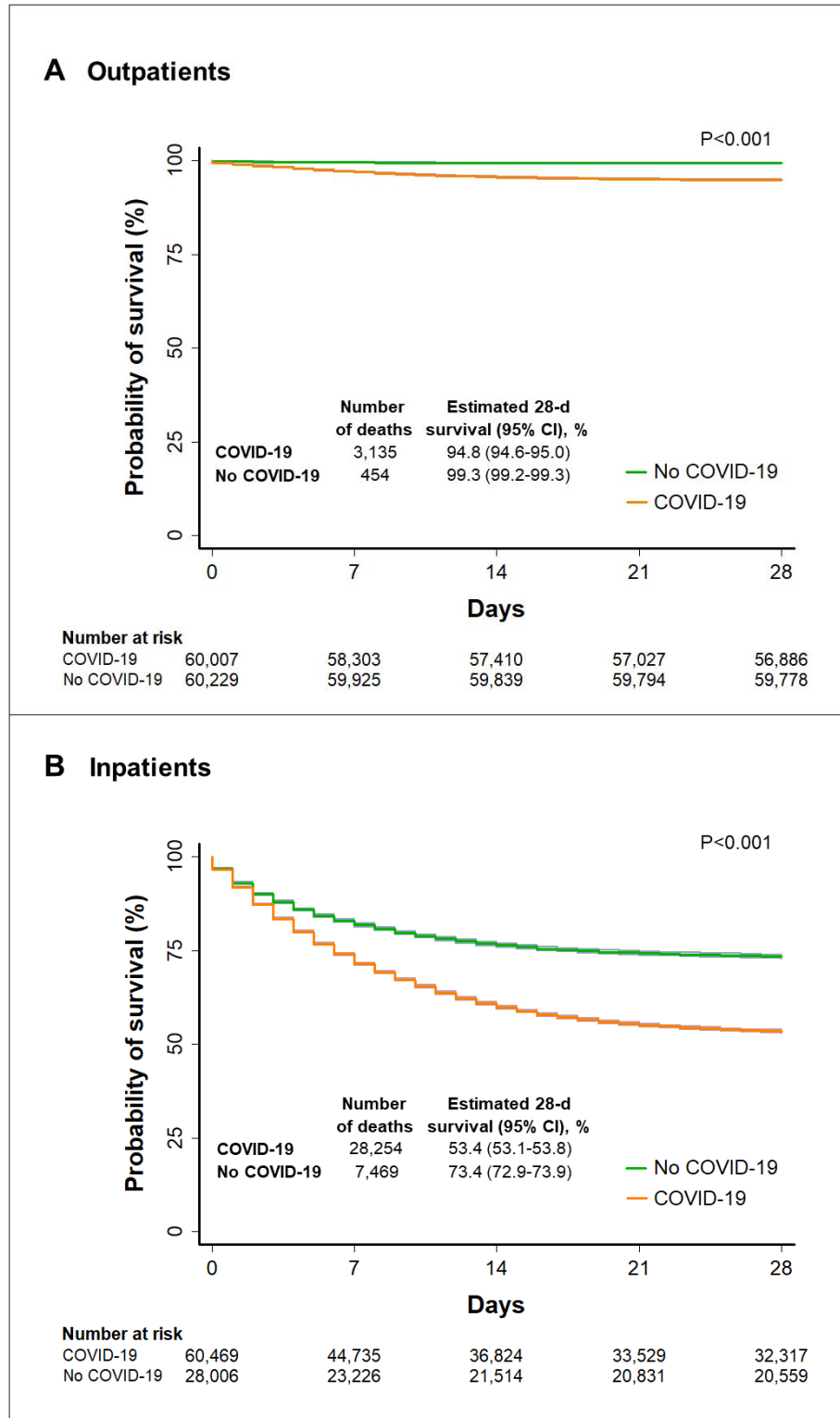
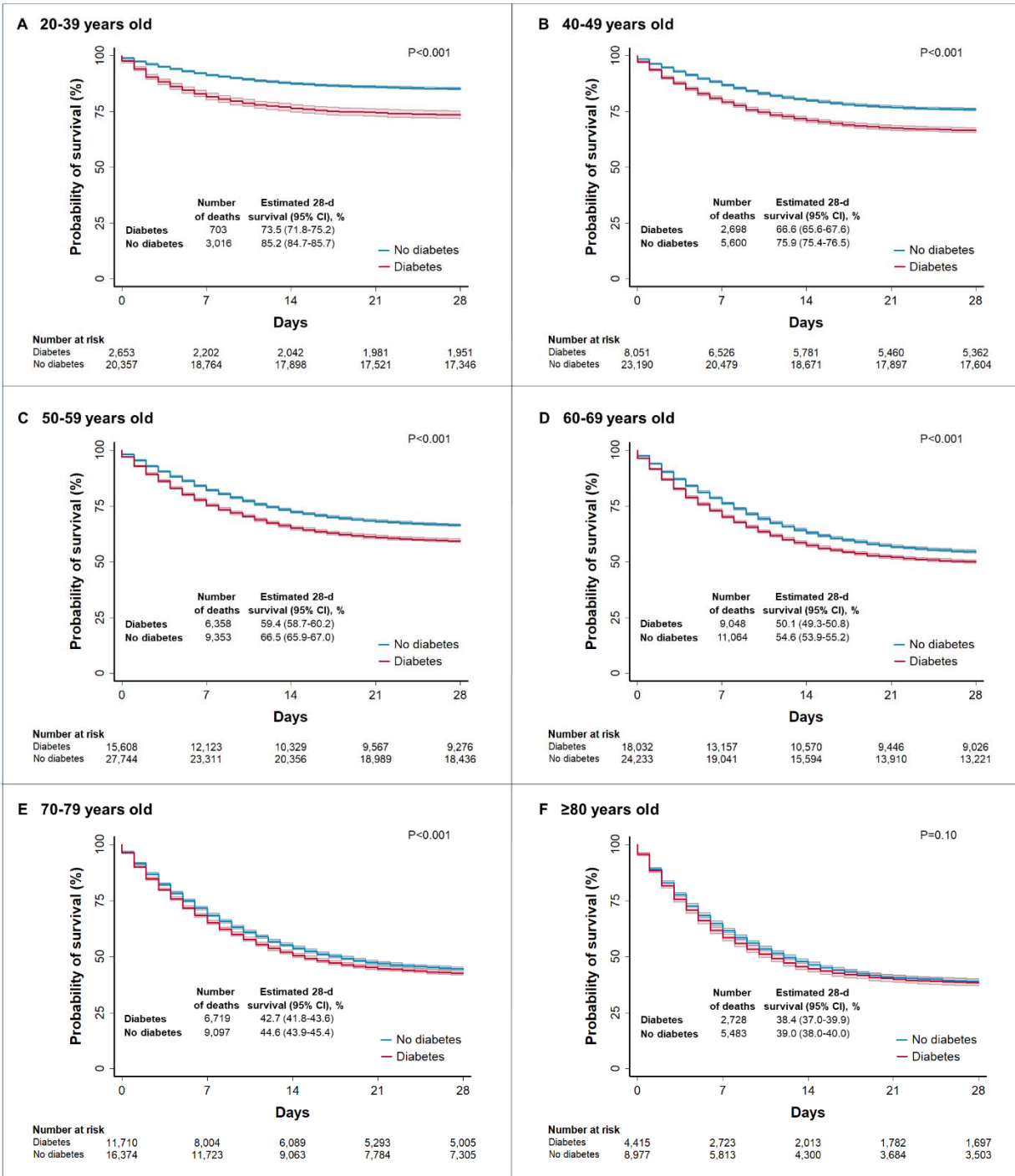


Figure 2



It is made available under a [CC-BY-NC-ND 4.0 International license](https://creativecommons.org/licenses/by-nc-nd/4.0/).



**Figure 3**