

1 **The Contrasting Role of Nasopharyngeal Angiotensin Converting Enzyme 2 (ACE2)**  
2 **Expression in SARS-CoV-2 Infection: A Cross-Sectional Study of People Tested for**  
3 **COVID-19 in British Columbia**

4  
5 **Authors:** Aidan M. Nikiforuk<sup>1,4\*</sup> (MSc.), Kevin S. Kuchinski<sup>1,2\*</sup> (BSc.), David D.W. Twa<sup>2,3\*</sup>  
6 (PhD), Christine D. Lukac<sup>1</sup> (MPH), Hind Sbihi<sup>1,4</sup> (PhD), C. Andrew Basham<sup>1,4</sup> (MSc.), Christian  
7 Steidl<sup>3</sup> (MD), Natalie A. Prystajeky<sup>1,2</sup> (PhD), Agatha N. Jassem<sup>1,2</sup> (PhD), Mel Krajden<sup>1,2</sup> (MD),  
8 David M. Patrick<sup>1,4</sup> (MD) and Inna Sekirov<sup>1,2</sup> (PhD).  
9

10 \*these authors contributed equally to the work.

11  
12 <sup>1</sup>British Columbia Centre for Disease Control, Vancouver, V5Z 4R4, British Columbia, Canada

13 <sup>2</sup>Department of Pathology and Laboratory Medicine, University of British Columbia, Vancouver,  
14 V6T 1Z4, British Columbia, Canada

15 <sup>3</sup>British Columbia Cancer Research Centre, Vancouver, V5Z 1L3, British Columbia, Canada

16 <sup>4</sup>School of Population and Public Health, University of British Columbia, Vancouver, V6T 1Z4,  
17 British Columbia, Canada  
18  
19  
20  
21  
22  
23  
24  
25  
26  
27  
28  
29  
30  
31  
32  
33  
34  
35  
36  
37  
38  
39  
40

41 **Corresponding Author:** Dr. Inna Sekirov MD/ PhD, British Columbia Centre for Disease  
42 Control, Vancouver, British Columbia, Canada, V5Z 4R4 and Department of Pathology and  
43 Laboratory Medicine, University of British Columbia, Vancouver, British Columbia, Canada,  
44 V6T 1Z4.

45 email: [inna.sekirov@bccdc.ca](mailto:inna.sekirov@bccdc.ca)  
46

## 47 **Summary**

48

### 49 *Background*

50 Angiotensin converting enzyme 2 (*ACE2*) serves as the host receptor for SARS-CoV-2,  
51 with a critical role in viral infection. We aim to understand population level variation of  
52 nasopharyngeal *ACE2* expression in people tested for COVID-19 and the relationship between  
53 *ACE2* expression and SARS-CoV-2 viral RNA load, while adjusting for expression of the  
54 complementary protease, Transmembrane serine protease 2 (*TMPRSS2*), soluble *ACE2*, age, and  
55 biological sex.

56

### 57 *Methods*

58 A cross-sectional study of n=424 participants aged 1-104 years referred for COVID-19  
59 testing was performed in British Columbia, Canada. Participants who tested negative or positive  
60 for COVID-19 were matched by age and biological sex. Viral and host gene expression was  
61 measured by quantitative reverse-transcriptase polymerase chain reaction. Bivariate analysis and  
62 multiple linear regression were performed to understand the role of nasopharyngeal *ACE2*  
63 expression in SARS-CoV-2 infection. The *ACE2* gene was targeted to measure expression of  
64 transmembrane and soluble transcripts.

65

### 66 *Findings*

67 Analysis shows no association between age and nasopharyngeal *ACE2* expression in  
68 those who tested negative for COVID-19 ( $P=0.092$ ). Mean expression of transmembrane  
69 ( $P=1.2e-4$ ), soluble *ACE2* ( $P<0.0001$ ) and *TMPRSS2* ( $P<0.0001$ ) differed between COVID-19-  
70 negative and -positive groups. In bivariate analysis of COVID-19-positive participants,  
71 expression of transmembrane *ACE2* positively correlated with SARS-CoV-2 RNA viral load  
72 ( $P<0.0001$ ), expression of soluble *ACE2* negatively correlated ( $P<0.0001$ ), and no correlation  
73 was found with *TMPRSS2* ( $P=0.694$ ). Multivariable analysis showed that the greatest viral RNA  
74 loads were observed in participants with high transmembrane *ACE2* expression ( $B=0.886$ ,  
75 95%CI:[0.596 to 1.18]), while expression of soluble *ACE2* may protect against high viral RNA  
76 load in the upper respiratory tract ( $B= -0.0990$ , 95%CI:[-0.176 to -0.0224]).

77

78 *Interpretation*

79 Nasopharyngeal *ACE2* expression plays a dual, contrasting role in SARS-CoV-2  
80 infection of the upper respiratory tract. Transmembrane *ACE2* positively correlates, while  
81 soluble *ACE2* negatively correlates with viral RNA load after adjusting for age, biological sex  
82 and expression of TMPRSS2.

83

84 *Funding*

85 This project (COV-55) was funded by Genome British Columbia as part of their COVID-  
86 19 rapid response initiative.

87

88 **Research in Context**

89

90 *Evidence before this study*

91 We conducted a MEDLINE<sup>®</sup> search using the MeSH topic terms: “angiotensin  
92 converting enzyme 2 expression” and “SARS” and “age”, restricting the search to English-  
93 language reports published from January 1<sup>st</sup>, 2020. The search returned n=98 articles, eighty-  
94 eight of which reported primary research; these were further filtered by the MeSH qualifiers  
95 “epidemiology” and “virology” to provide n=43 articles. Search results were further restricted to  
96 the MeSH headings: age, virus replication, host pathogen interactions, nasal mucosa, RNA viral  
97 load and real-time polymerase chain reaction, which returned n=24 results. We read through the  
98 abstracts of these twenty-four papers and manually selected n=4 for full review. This review  
99 provided evidence that *ACE2* expression is greater in the upper respiratory tract than the lower  
100 respiratory tract, when measured by single-cell RNA sequencing, immunohistochemistry and  
101 high-sensitivity RNA in-situ mapping. In the upper airway, *ACE2* mRNA abundance closely  
102 correlates with protein concentration. A reverse genetics study demonstrated that a variable  
103 SARS-CoV-2 infection gradient occurs in the respiratory tract, with highest viral loads expected  
104 in the upper airway. In several patient cohorts, upper respiratory expression of *ACE2* was  
105 significantly increased in those who smoke, in this analysis multivariable adjustment of age  
106 suggested limited confounding.

107

108

109 *Added Value of this study*

110 We measured *ACE2* expression in the context of COVID-19 testing to investigate the role  
111 of nasopharyngeal *ACE2* in SARS-CoV-2 infection. Our findings support previous work: the  
112 strong correlation we observe between nasopharyngeal *ACE2* expression and SARS-CoV-2 load  
113 also suggests an infection gradient across the human airway. Greater viral loads are expected in  
114 tissue with high transmembrane *ACE2* expression. No observed relationship between age and  
115 nasopharyngeal *ACE2* in COVID-19-negative participants suggests that upper airway *ACE2*  
116 expression is independent of the RAAS pathway. We are the first to measure endogenous  
117 expression of soluble *ACE2* in the upper airway of people tested for COVID-19 and include this  
118 measure in multivariable analysis. Importantly, nasopharyngeal expression of soluble *ACE2*  
119 negatively correlates with viral RNA load, inferring a protective role at the population level.

120

121 *Implications of all the available evidence*

122 Considering all available evidence, *ACE2* may play a dual, contrasting role in SARS-  
123 CoV-2 infection of the upper airway. Expression of transmembrane *ACE2* positively correlates  
124 with SARS-CoV-2 RNA load, while expression of soluble *ACE2* shows a negative association.  
125 Expression of nasopharyngeal *ACE2* does not seem to correlate with age, as would be expected  
126 in the lower respiratory tract. Risk factors such as smoking may affect the baseline risk of high  
127 SARS-CoV-2 RNA loads in those infected. Factors associated with endogenous nasopharyngeal  
128 expression of soluble *ACE2* require further investigation.

129

130 **Introduction**

131 In December 2019, clusters of viral pneumonia were reported in Wuhan, China. A novel  
132 highly pathogenic human coronavirus was isolated and named severe acute respiratory syndrome  
133 coronavirus 2 (SARS-CoV-2), the etiological agent of coronavirus disease (COVID-19).<sup>1</sup> SARS-  
134 CoV-2 utilizes the same host receptor and protease for cell entry as the human coronaviruses  
135 SARS-CoV and HCoV-NL63. The receptor angiotensin converting enzyme 2 (*ACE2*) mediates  
136 cellular entry, while transmembrane serine protease 2 (TMPRSS2) serves as a complementary  
137 host factor.<sup>2,3</sup> In human physiology, *ACE2* has a cardiovascular protective and anti-inflammatory  
138 role, as a constituent of the renin-angiotensin-aldosterone-system (RAAS).<sup>4</sup> Interestingly,

139 expression of *ACE2* in the nasopharyngeal tract exceeds that in alveolar tissue, explaining  
140 initiation of SARS-CoV-2 infection in the upper respiratory tract.<sup>5</sup> Transcription of *ACE2*  
141 produces at least two dominant mRNA transcripts responsible for translation into soluble and  
142 membrane-bound protein isoforms.<sup>6</sup> Although the transmembrane isoform has been shown to be  
143 crucial for viral entry into host cells, the role of soluble *ACE2* remains uncharacterized, though  
144 some evidence exists that it protects against SARS-CoV-2 infection.<sup>7,8</sup> Transmembrane serine  
145 protease 2 (*TMPRSS2*) contributes to SARS-CoV-2 cell entry by cleaving the viral spike protein  
146 into a conformational form necessary for membrane fusion.<sup>2</sup> Unlike *ACE2*, *TMPRSS2* expression  
147 occurs more stably across upper airway tissue and alternative enzymes such as cathepsin B/L  
148 may perform its role in viral infection interchangeably.<sup>5</sup> To understand the importance of *ACE2*  
149 expression in SARS-CoV-2 infection, we performed a cross-sectional study of people tested for  
150 COVID-19 in British Columbia, Canada. The study aims to investigate the relationship between  
151 i) nasopharyngeal expression of *ACE2* and age in COVID-19-negative participants, ii)  
152 nasopharyngeal expression of host genes by COVID-19 test result and iii) nasopharyngeal  
153 expression of transmembrane *ACE2* and viral RNA load in those who tested COVID-19-positive  
154 adjusting for age, biological sex, expression of soluble *ACE2* and *TMPRSS2*. Characterizing  
155 expression of nasopharyngeal *ACE2* in a large group of participants tested for COVID-19 will  
156 increase our knowledge of host genes involved in viral infection and may allow for assessment  
157 of baseline risk.

158

## 159 **Methods**

### 160 *Study Design and Participants*

161 We performed cross-sectional sampling of people tested for COVID-19 at the British  
162 Columbia Center for Disease Control Public Health Laboratory (BCCDC-PHL) from 24/3/2020-  
163 9/5/2020. At the time of sampling, provincial health guidelines required a clinical indication for  
164 referral of a COVID-19 test. Inclusion criteria were applied to select study participants whose  
165 diagnostic specimens were: tested centrally at the BCCDC-PHL, collected by nasopharyngeal  
166 swab, the first test administered by provincial health number, suspended in Hologic Aptima<sup>TM</sup>  
167 media, negative for concurrent Influenza A, B or Respiratory syncytia virus infection, stored at -  
168 80°C following RNA extraction and for whom host gene expression was successfully measured  
169 by quantitative reverse-transcriptase polymerase chain reaction (qRT-PCR). People meeting the

170 inclusion criteria (n=444), were excluded (n=16) if samples had a SARS-CoV-2 E gene cycle  
171 threshold (Ct) value of  $\geq 38$  by qRT-PCR. COVID-19-positive cases (n=212) were matched in a  
172 1:1 ratio with those that tested negative for COVID-19 by age and biological sex (Figure S1).

173 Ethical approval for the study was obtained from the University of British Columbia  
174 human ethics board (H20-01110). Demographic variables of age and biological sex were drawn  
175 from public health laboratory data. Laboratory methods were performed in a College of  
176 American Pathologists accredited laboratory with externally validated qRT-PCR assays.<sup>9-12</sup>

177

### 178 *Procedures*

179 Nasopharyngeal samples collected in Hologic Aptima<sup>TM</sup> media were stored at 4°C before  
180 RNA extraction using the Viral RNA isolation kit on the MagMAX-96<sup>TM</sup> platform  
181 (ThermoFisher).<sup>13</sup>

182 Host and viral gene targets were assayed by qRT-PCR on the Applied Biosystems 7500  
183 Real-Time PCR platform using TaqMan FastVirus 1-step polymerase (ThermoFisher). Total  
184 reaction volumes equaled 20 $\mu$ l, with 5 $\mu$ l of RNA template, 1 $\mu$ l of 20x primer/probe, 5 $\mu$ l Fast  
185 Virus and 9 $\mu$ l of nuclease free water per reaction. Cycling conditions were set to: 50°C for 5  
186 minutes, 95°C for 20 seconds followed by 40 cycles of 95°C for 15 seconds and 60°C for 1  
187 minute. A multiplex qRT-PCR reaction targeting SARS-CoV-2 envelope (E) and host  
188 ribonuclease P (RNaseP) was used to diagnosis acute viral infection by presence of viral RNA.<sup>14</sup>  
189 Expression of RNaseP was used to ensure sample quality and control for sampling variation.<sup>14</sup>  
190 Participants were diagnosed as COVID-19 positive with an E gene Ct value of  $< 38$ . The E gene  
191 Ct values were transformed to genome equivalents per millilitre by making a 5-fold, 1:10  
192 standard curve of SARS-CoV-2 synthetic RNA- MN908947.3 (Twist Bioscience) (Table S1).

193 Commercially available primer probe sets were used to amplify the host gene targets  
194 *TMPRSS2*<sup>12</sup> (Hs00237175\_m1) (ThermoFisher) and *ACE2*<sup>10</sup> (Hs01085333\_m1,  
195 HS01085340\_m1) by multiplex qRT-PCR with a glyceraldehyde 3-phosphate dehydrogenase  
196 (*GAPDH*) control<sup>11</sup> (Hs02758991\_g1) (ThermoFisher). Relative gene expression was calculated  
197 between *TMPRSS2*, *ACE2* and *GAPDH* using the  $2^{-\Delta\Delta C_t}$  method.<sup>15</sup> Transmembrane *ACE2* was  
198 defined from the Hs01085333\_m1 (ThermoFisher) gene target, which exon spans the  
199 transmembrane domain. Soluble *ACE2* was defined as absolute relative expression between the  
200 Hs01085333\_m1 (ThermoFisher) and HS01085340\_m1 (ThermoFisher) gene targets (Figure

201 S3). The HS01085340\_m1 target, does not include the transmembrane domain and is positioned  
202 between two motifs essential for SARS-CoV receptor binding (Figure S3).

### 203 *Statistical Analysis*

204 De-identified data reporting participant COVID-19 test result, site of sample collection,  
205 type of collection media, accessioning laboratory, age and biological sex was accessed from  
206 public health laboratory records. Matching of COVID-19-positive people, who met the described  
207 inclusion, exclusion criteria, to COVID-19-negative participants by age and biological sex in a  
208 1:1 ratio was performed by a nearest neighbor algorithm (n=424).<sup>16</sup> Bivariate analysis was  
209 performed between: age, biological sex, viral RNA load, *TMPRSS2*, soluble or transmembrane  
210 *ACE2*, and COVID-19 test result. The balance of covariates between test groups was examined  
211 post matching.

212 The relationship between age and nasopharyngeal expression of transmembrane *ACE2*  
213 was examined in COVID-19-negative participants over the age of 18 by both linear regression  
214 and categorization of age into 9-year intervals. Differences in *ACE2* expression by age category  
215 were tested by analysis of variance.

216 Differences in mean expression of host genes by COVID-19 diagnosis was further  
217 examined by Levene's test for equal variance and a two-tailed, t-test assuming non-equal  
218 variance.<sup>17</sup> Correlation between host gene expression and viral RNA load was analyzed by  
219 simple linear regression. Multivariable analysis was performed by multiple linear regression,  
220 variable importance was assessed by the partial f-test.<sup>18</sup> Collinearity was examined by the  
221 variable inflation factor with a cut-off of 10.<sup>19</sup> The common cause criterion was applied to  
222 control for measured confounding, effect modification was incorporated when found statistically  
223 significant.<sup>20</sup> All analysis was performed in RStudio version 1.2.5042 using the packages: car,  
224 ggsci, tidyverse, dataexplorer, ggpubr, lmtest, publish, forcats, matchit, tableone and effects.<sup>21</sup>

225

### 226 *Role of the Funding Source and Data Stewards*

227 The funder and data stewards played no role in the study design, analysis or interpretation  
228 of the results. As such, interpretation of the results does not reflect the views of the funding  
229 organization or data stewards. The study was performed as research at the University of British  
230 Columbia and British Columbia Centre for Disease Control.

231

232 **Results**

233 The analytic dataset contains an age- and biological sex-matched sample of n=424  
 234 participants tested for COVID-19 in British Columbia from 24/3/2020-9/5/2020 (Figure S1).  
 235 Participant characteristics are shown in Table 1. The mean age of n=212 COVID-19-positive  
 236 participants was 61.6, 47.6% were biologically male. In n=212 COVID-19-negative participants,  
 237 the mean age was 62.1, 48.6% were biologically male. Bivariate analysis between the examined  
 238 covariates and diagnosis (COVID-19-negative or -positive) shows balance of age (P=0.83) and  
 239 biological sex (P=0.92) between groups. Viral RNA (E gene Ct) was only detected in COVID-  
 240 19 positive participants, with an average Ct value of 28.2. Relative expression of transmembrane  
 241 ACE2, soluble ACE2, and TMPRSS2 statistically differed by COVID-19 test result (Table 1).

242

243 **Table 1: Structure and Characteristics of Analytic Data Stratified by COVID-19 Test Result (n=424).**

| Variable Name                  | Level  | Total (n) | COVID-19 Test Result |                 | Chi X^2 | T-Test  |
|--------------------------------|--------|-----------|----------------------|-----------------|---------|---------|
|                                |        |           | Negative             | Positive        |         |         |
|                                | ..     | 424       | 212                  | 212             | ..      | ..      |
|                                | ..     |           | ..                   | ..              | ..      | ..      |
| Age (mean [SD])                | ..     | 424       | 62.2 [24.3]          | 61.7 [23.5]     | ..      | 0.83    |
| Sex (n [%])                    | ..     | ..        | ..                   | ..              | 0.92    | ..      |
|                                | Male   | 204       | 103 [48.6]           | 101 [47.6]      | ..      | ..      |
|                                | Female | 220       | 109 [51.4]           | 111 [52.4]      | ..      | ..      |
| E Gene Ct (mean [SD])          | ..     | 424       | ..                   | 28.2 [7.18]     | ..      | ..      |
|                                | ..     | ..        | ..                   | ..              | ..      | ..      |
| Transmembrane ACE2 (mean [SD]) | ..     | 424       | (0.00) [1.08]        | (-0.609) [1.90] | ..      | 1.2e-4  |
| Soluble ACE2 (mean [SD])       | ..     | 424       | (0.00) [0.625]       | (-0.898) [1.47] | ..      | <0.0001 |
| TMPRSS2 Total (mean [SD])      | ..     | 424       | (0.00) [0.797]       | (-1.35) [1.60]  | ..      | <0.0001 |

244 Participants who tested negative or positive by COVID-19 were matched by age and biological sex, balance was  
 245 checked between groups post matching by chi X^2 or t-test ( $\alpha=0.05$ ). Relative gene expression of ACE2 and  
 246 TMPRSS2 was normalized to the negative group by the  $2^{-\Delta\Delta Ct}$  method.<sup>15</sup>

247

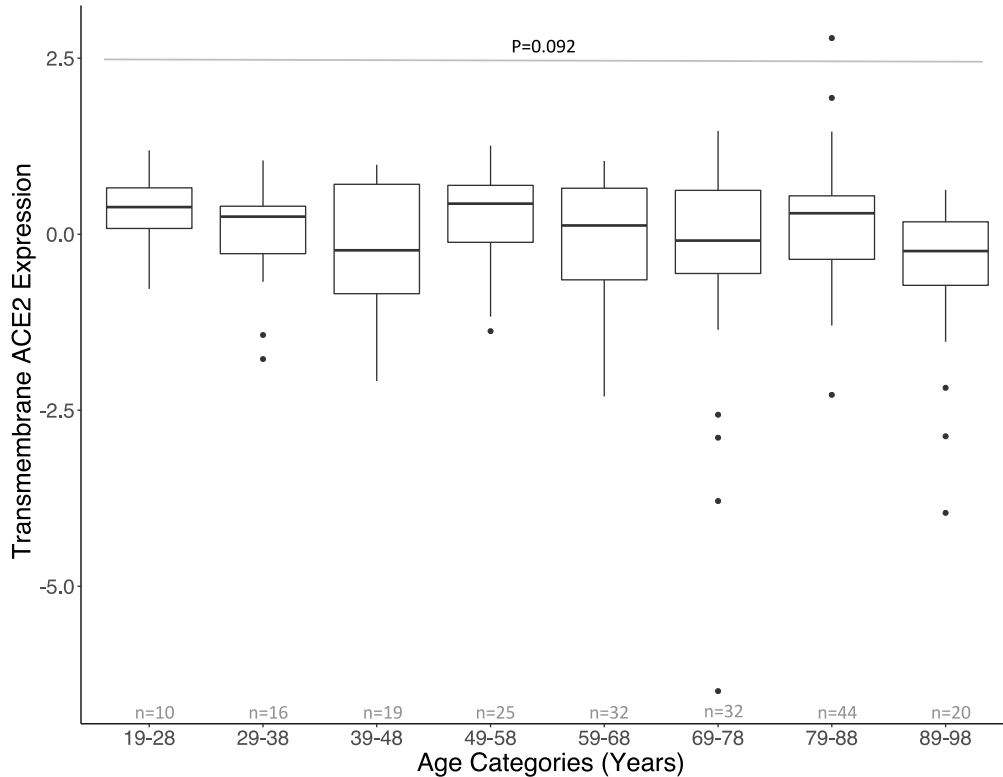
248 *Relationship between ACE2 expression and age in COVID-19-negative participants*

249 No relationship was found between nasopharyngeal ACE2 expression and age in COVID-  
 250 19 negative participants between 19 and 98 years of age with age as a continuous variable by



251 linear regression ( $P=0.076$ ). This finding was reproduced when age was categorized into nine-  
252 year intervals ( $P=0.092$ ) (Figure 1).

253



254

255 **Figure 1: Relationship between age and nasopharyngeal transmembrane *ACE2* expression in COVID-19-**  
256 **negative participants.** Boxplots of transmembrane *ACE2* expression by nine-year age categories in COVID-19-  
257 negative participants between the ages of 19 and 98 ( $n=198$ ); boxes represent the Q1-Q3 interquartile range,  
258 whiskers represent 1.5x the Q1 or Q3 and horizontal lines the median transmembrane *ACE2* expression by age  
259 category. Nine-year categories were selected to optimize the distribution of observations between groups.  
260 Participants who tested negative younger than 19 or older than 98 were excluded based on  $n<10$  observations per  
261 age group. No difference was detected in mean transmembrane *ACE2* expression among age categories (ANOVA,  
262  $P=0.092$ ).

263

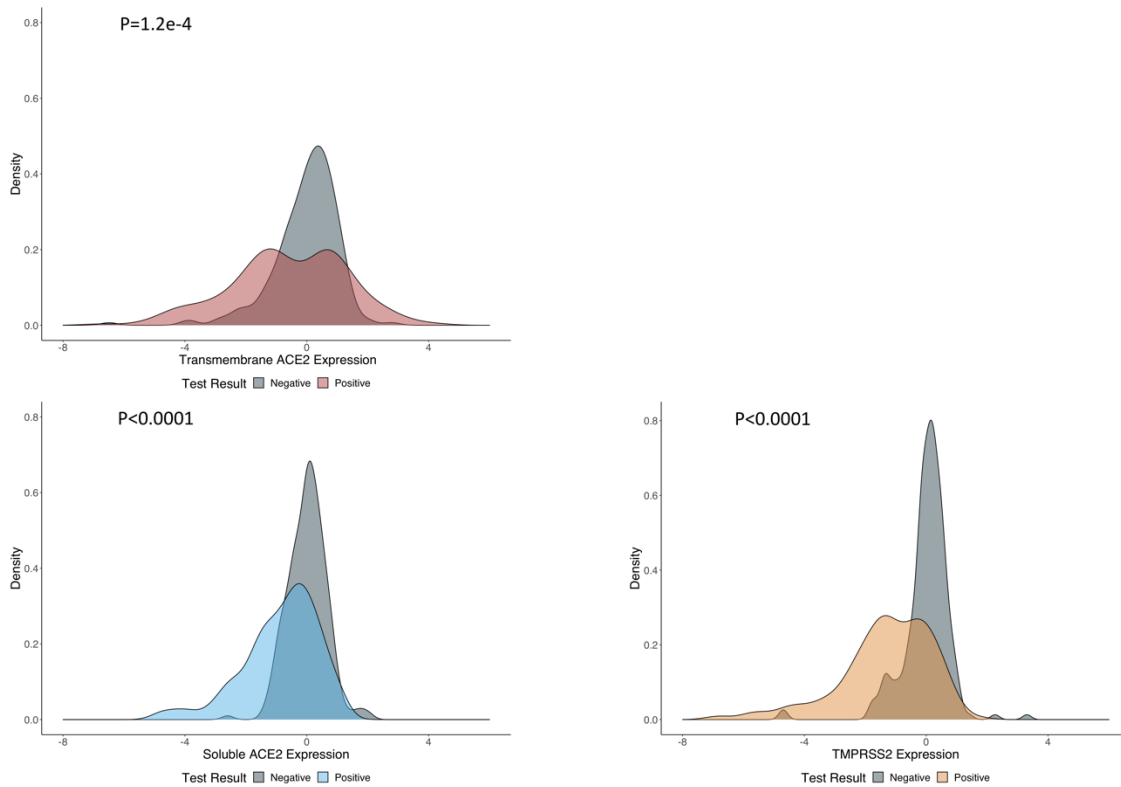
264 *Nasopharyngeal expression of *ACE2* and *TMPRSS2* by COVID-19 test result*

265 Bivariate analysis showed a significant mean difference in transmembrane, soluble *ACE2*  
266 and *TMPRSS2* expression between COVID-19-negative and -positive participants (Figure 2).

267 These differences were further examined to detect non-equal variance for all host gene targets by  
268 COVID-19 test result. Assuming non-equal variance, mean expression differed for

269 transmembrane *ACE2* ( $P=1.2e-4$ ), soluble *ACE2* ( $P<0.0001$ ) and *TMPRSS2* ( $P<0.0001$ ) between

270 those testing COVID-19-negative or -positive (Figure 2). Expression of all three host genes was  
271 lower in COVID-19-positive participants.



272  
273 **Figure 2: Relative nasopharyngeal gene expression of targeted host genes by COVID-19 test result.** Gene  
274 expression is portrayed in kernel density plots stratified by COVID-19 test result. Probability densities of relative  
275 host gene expression are shown by positive (red, transmembrane *ACE2*; blue, soluble *ACE2*; yellow, *TMPRSS2*) and  
276 negative COVID-19 test results (grey). Levene's test was used to detect non-equal variance in gene expression for  
277 all host targets between COVID-19-negative and -positive participants. A two-tailed, t-test was used to examine  
278 mean difference in host gene expression by COVID-19 test result assuming unequal variance: transmembrane *ACE2*  
279 (P=1.2e-4), soluble *ACE2* (P<0.0001) and *TMPRSS2* (P<0.0001).

280

281 *Association between host gene expression and viral RNA load in COVID-19-positive*  
282 *participants*

283 Correlations between each host gene and viral RNA load were examined by simple linear  
284 regression. Nasopharyngeal expression of transmembrane *ACE2* positively correlated with viral  
285 RNA (P<0.0001). Expression of soluble *ACE2* negatively correlated with viral RNA  
286 (P<0.0001). No correlation was found between *TMPRSS2* expression and viral RNA (P=0.69)

287 (Figure S2). Multiple linear regression estimated that a one-unit change in transmembrane *ACE2*  
288 expression increases viral RNA load by 0.886 Log<sub>10</sub> GE/mL (95%CI: 0.596 to 1.18) adjusting  
289 for age, biological sex, expression of soluble *ACE2* and *TMPRSS2* (Table 2). No collinearity was  
290 detected between covariates. Biological sex could have been dropped from the model as evident  
291 from comparison between nested models (P=0.76), but was kept for validity. A partial f-test  
292 indicated effect modification between transmembrane and soluble *ACE2* expression (P=0.010)  
293 (Table 2). No effect modification was observed between transmembrane expression of *ACE2* and  
294 *TMPRSS2* (P=0.23). High expression of soluble *ACE2* decreases viral RNA load (B= -0.0990,  
295 95%CI: [-0.176 to -0.0224]) (Table 2). The association between transmembrane *ACE2*  
296 expression and viral RNA in nasopharyngeal tissue differs by the concomitant level of soluble  
297 *ACE2* expressed (Figure 3). Effect modification was visualized by categorizing soluble *ACE2* by  
298 the relative mean expression +/- 2 standard deviations of all study participants (Low= -2.86,  
299 Mean= -0.444, High= 1.98, SD=2.43) (Figure 3).

300  
301  
302  
303  
304  
305  
306  
307  
308  
309  
310  
311  
312  
313  
314  
315  
316  
317

318 **Table 2: Unadjusted, Adjusted and Effect Modification Linear Regression Models of SARS-CoV-2 Viral**  
 319 **RNA Load**

| Variables  | Unadjusted, <i>B</i> (95%CI) | Adjusted, <i>B</i> (95%CI) | Effect Modification, <i>B</i> (95%CI) |
|--|------------------------------|----------------------------|---------------------------------------|
| Intercept <sup>a</sup>                                   | 5.44 (5.12 to 5.77)          | 2.55 (1.71 to 3.40)        | 2.48 (1.65 to 3.31)                   |
| Transmembrane ACE2 Expression <sup>b</sup>               | 0.493 (0.329 to 0.656)       | 0.886 (0.596 to 1.18)      | 0.624 (0.274 to 0.975)                |
| Soluble ACE2 Expression <sup>c</sup>                     | --                           | -0.243 (-0.494 to 0.00834) | -0.484 (-0.794 to -0.174)             |
| TMPRSS2 Expression <sup>d</sup>                          | --                           | -0.873 (-1.21 to -0.533)   | -0.713 (-1.07 to -0.336)              |
| Age <sup>e</sup>   | --                           | 0.0276 (0.0162 to 0.0389)  | 0.0259 (0.0146 to 0.0372)             |
| Biological Sex <sup>f</sup>                              | --                           | 0.0778 (-0.424 to 0.579)   | 0.0735 (-0.422 to 0.569)              |
| Transmembrane ACE2* Soluble ACE2 Expression <sup>g</sup> | --                           | --                         | -0.0990 (-0.176 to -0.0224)           |

320 Regression of SARS-CoV-2 viral RNA load by Transmembrane *ACE2*, Soluble *ACE2* and *TMPRSS2* Expression,  
 321 Age and Biological Sex.

322 <sup>a</sup> Viral RNA load in females, measured by Log<sub>10</sub> viral genome equivalents per millilitre (Log<sub>10</sub> GE/mL) targeting the  
 323 SARS-CoV-2 *E* gene.

324 <sup>b</sup> Transmembrane *ACE2* Expression ( $2^{-\Delta\Delta C_t}$ ) in the nasopharyngeal epithelium of SARS-CoV-2 positive participants.

325 <sup>c</sup> Soluble *ACE2* expression ( $2^{-\Delta\Delta C_t}$ ) in the nasopharyngeal epithelium of SARS-CoV-2 positive participants.

326 <sup>d</sup> *TMPRSS2* expression ( $2^{-\Delta\Delta C_t}$ ) in the nasopharyngeal epithelium of SARS-CoV-2 positive participants.

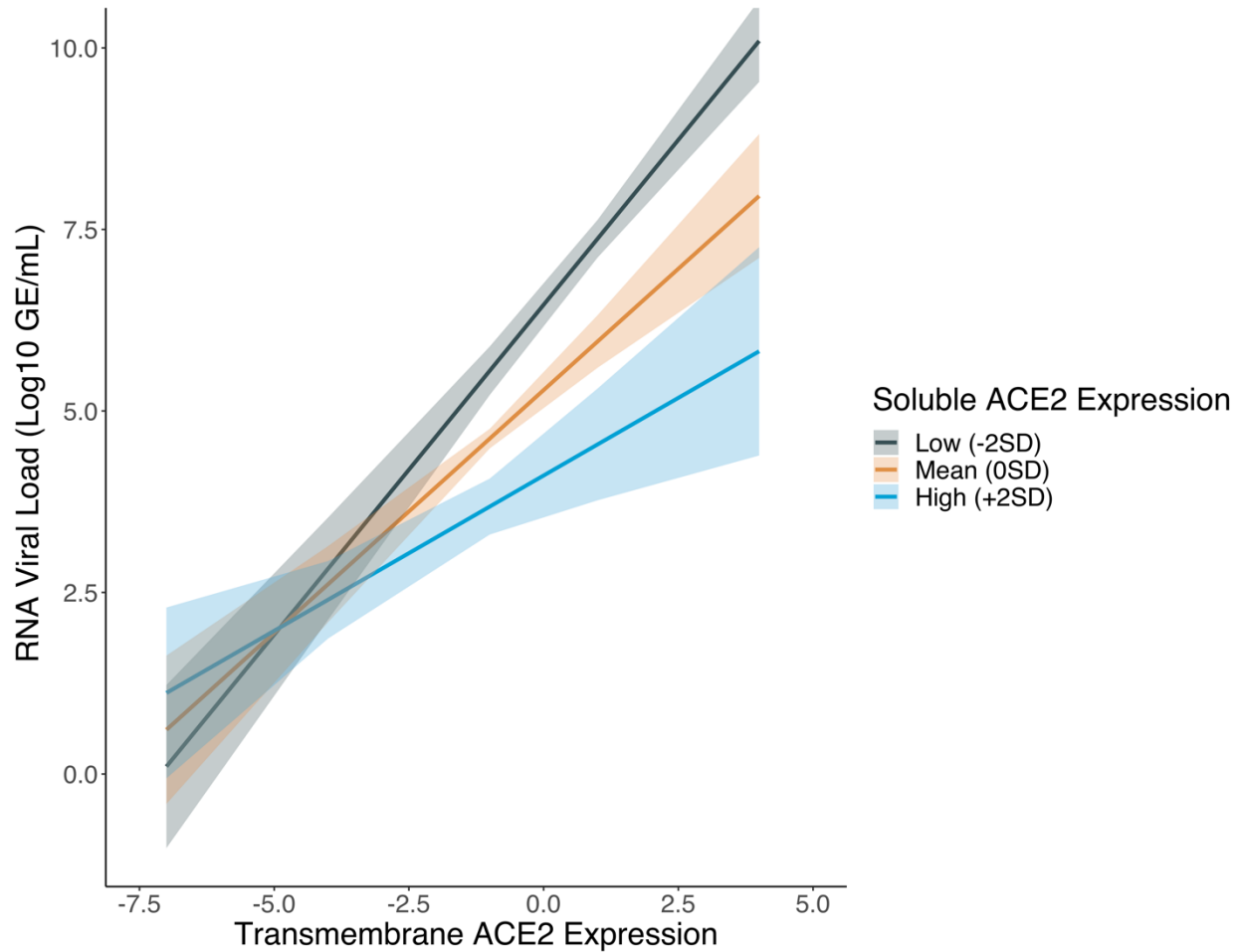
327 <sup>e</sup> Age, measured in years.

328 <sup>f</sup> Biological sex, effect of being male.

329 <sup>g</sup> Effect modification term, the effect of transmembrane *ACE2* expression on viral RNA load differs by expression of  
 330 soluble *ACE2*.

331

332



333

334 **Figure 3: The association between transmembrane *ACE2* expression and SARS-CoV-2 RNA load in**  
335 **nasopharyngeal tissue differs by the amount of soluble *ACE2* expression.** Soluble *ACE2* expression was  
336 categorized into low, mean and high levels to demonstrate the relationship. The low category (grey) represents  
337 soluble *ACE2* expression two standard deviations below the mean expression. The mean category (orange) codes for  
338 the mean soluble *ACE2* expression, zero standard deviations. The high category (blue) indicates soluble *ACE2*  
339 expression two standard deviations above mean expression. Shaded areas represent 95% confidence intervals, solid  
340 lines represent *B* coefficients from multiple linear regression.

341

## 342 Discussion

343 In the described study, we measured nasopharyngeal *ACE2* and *TMPRSS2* relative gene  
344 expression by qRT-PCR in a cross-sectional sample of n=424 participants tested for COVID-19  
345 in British Columbia. Analysis was performed to understand: the relationship between *ACE2*  
346 expression and age in COVID-19-negative participants, differences in host gene expression  
347 between COVID-19-negative and -positive participants and the role of *ACE2* in SARS-CoV-2

348 infection in those who tested positive for COVID-19.

349         Among participants tested negative for COVID-19, we found no relationship between  
350 nasopharyngeal *ACE2* expression and age, in a group of adults between 19-98 years of age. This  
351 result, agrees with findings from other efforts to characterize nasopharyngeal *ACE2* expression at  
352 the population level. Bunyavanich et al. reported a difference in *ACE2* expression levels between  
353 children younger than ten years old and young adults from eighteen to twenty-four years old.<sup>22</sup>  
354 No difference was evident between young adults, and adults twenty-five or more years in age.<sup>22</sup>  
355 Lack of a relationship between nasopharyngeal *ACE2* expression and progressive aging suggests  
356 that expression of *ACE2* in the upper airway does not correlate with expression of *ACE2* in the  
357 RAAS. The physiological importance of *ACE2* in the RAAS suggests that its expression would  
358 increase in response to age as older people have higher prevalence of cardiovascular disease or  
359 similar comorbidities (i.e. diabetes).<sup>23</sup> If nasopharyngeal expression of *ACE2* occurs  
360 independently of the RAAS pathway, future studies should ascertain what factors if any regulate  
361 expression of soluble *ACE2* in nasopharyngeal tissue and variation of *ACE2* expression in  
362 COVID-19-negative people over time. Some populations, such as young children, may have  
363 differential levels of nasopharyngeal *ACE2* expression which protect against SARS-CoV-2 viral  
364 infection.<sup>22,24</sup>

365         Participants who tested positive for COVID-19 were matched to those who tested  
366 negative by age and biological sex to estimate the direct relationship between host gene  
367 expression and SARS-CoV-2 test result. This analysis demonstrated that mean expression of  
368 transmembrane, soluble *ACE2* and *TMPRSS2* decreased in COVID-19-positive participants,  
369 while variation increased. Unfortunately, the limitation of reverse-causality in cross-sectional  
370 study design prevents us from understanding whether the presence of SARS-CoV-2 in positive  
371 samples affects host gene expression or host gene expression puts people at risk of viral  
372 infection. However, if we make the plausible assumption that at least a single round of viral  
373 replication must occur in order for qRT-PCR to generate a positive test result, it suggests that the  
374 observed variation in host gene expression of participants who test positive for COVID-19  
375 results from viral replication.<sup>25</sup> Numerous studies have demonstrated that coronavirus  
376 replication disrupts cellular transcription, as resources required by the cell to produce mRNA are  
377 instead sequestered by virus to replicate its genome.<sup>26</sup> Reduced transcription of *ACE2* by  
378 SARS-CoV, but not HCoV-NL63, in an *in vitro* model of Vero E6 cell infection was previously

379 suggested as a pathological mechanism.<sup>3</sup> Putative SARS-CoV-2 disruption of *ACE2* expression  
380 could partially explain the apparent association between hypertension, diabetes, and severe  
381 COVID-19.<sup>27</sup> Answering these questions; however, requires a longitudinal study design to test  
382 the temporal effect of SARS-CoV-2 replication on the expression of *ACE2* and other implicated  
383 host genes.

384 The sample was then restricted to participants who tested positive for COVID-19 to  
385 investigate the association between nasopharyngeal *ACE2* expression and SARS-CoV-2 RNA  
386 load. Bivariate and multivariable analysis both suggest that *ACE2* plays a dual, contrasting role  
387 in SARS-CoV-2 infection. Transmembrane *ACE2* positively correlates with viral RNA load,  
388 while soluble *ACE2* may limit viral infection by reducing viral RNA load. Interestingly, effect  
389 modification was observed between transmembrane and soluble *ACE2* implicating that the  
390 proportion between these molecules may have more importance than absolute expression of  
391 either individually. For example, between two people with similar above-average  
392 nasopharyngeal transmembrane *ACE2* expression, we would expect a higher viral RNA load in  
393 the one with lower soluble *ACE2* expression. Though we are not equipped to characterize the  
394 mechanism by which soluble *ACE2* plays a protective role in SARS-CoV-2 infection,  
395 identification of this effect at the population level warrants further investigation of the  
396 underlying mechanism. Previous work has postulated that soluble *ACE2* restricts SARS-  
397 CoV/SARS-CoV-2 infection by acting as a decoy substrate.<sup>28</sup> In a study of virus-*ACE2* dynamics  
398 in engineered human tissue, instead of binding to transmembrane *ACE2*, virus particles bound to  
399 soluble *ACE2* and were unable to infect susceptible cells.<sup>28</sup> Moreover, recombinant soluble  
400 *ACE2* was recently administered to a COVID-19 patient requiring ventilation.<sup>8</sup> In the case report,  
401 administration of soluble *ACE2* decreased viral RNA load in the patient's plasma, tracheal  
402 aspirate and nasopharyngeal specimens. Additionally, soluble *ACE2* did not interfere with  
403 production of IgG and assumed its cardiovascular protective role in the RAAS.<sup>8</sup>

404 Soluble *ACE2* may also influence the usage of Neuropilin-1 as a co-receptor or  
405 alternative receptor for SARS-CoV-2. Function of Neuropilin-1 for cell entry and infectivity may  
406 depend upon high SARS-CoV-2 viral load; therefore, expression of soluble *ACE2* may limit  
407 SARS-CoV-2 tropism.<sup>29</sup>

408 We acknowledge that the described study has several limitations. In our sample, the age  
409 distribution possesses a left skew which prevents us from examining the relationship between

410 age and nasopharyngeal expression of *ACE2* in participants younger than 18 years of age. The  
411 difference in mean host gene expression observed between participants who tested negative or  
412 positive for COVID-19 cannot be resolved in a cross-sectional study design due to reverse  
413 causality. We attempted to control for immunological gene regulation by excluding people with  
414 endemic respiratory co-infections from Influenza A/B or Respiratory syncytia virus. We describe  
415 associations between transmembrane, soluble *ACE2* and SARS-CoV-2 RNA load which suggest  
416 the dual, contrasting role of *ACE2* in viral infection. However, we cannot provide evidence of the  
417 mechanism responsible for this association. Additionally, the measure of viral RNA load over-  
418 approximates infectious viral titre and viral RNA may be isolated in the absence of infectious  
419 virus.<sup>30</sup>

420 In conclusion, we have characterized nasopharyngeal *ACE2* expression in a sample of  
421 people tested for COVID-19. Analysis shows no relationship between age and nasopharyngeal  
422 *ACE2* expression in COVID-19-negative participants 19-98 years old. Expression of  
423 nasopharyngeal *ACE2* and *TMPRSS2* differs between COVID-19-positive and –negative groups.  
424 The role of nasopharyngeal *ACE2* in SARS-CoV-2 infection of the upper-airway may be  
425 differentiated by gene isoform expression; transmembrane *ACE2* positively correlates with viral  
426 RNA load, while soluble *ACE2* shows a negative association. Nasopharyngeal expression of  
427 *ACE2* possesses a dual, contrasting role in SARS-CoV-2 infection at the population level.

428

#### 429 **Contributors**

430 AMN, DDWT, KSK, NAP, ANJ, MK, DMP, and IS conceived, designed, and obtained funding  
431 for the project. AMN wrote the manuscript, editing was provided by Karen Chu. AMN, DDWT  
432 and KSK performed the experiments. CDL and HS obtained and cleaned laboratory data. AMN,  
433 KSK, DDWT, CAB, CDL, and HS analyzed the data under the direction of CS, NAP, ANJ, MK,  
434 DMP and IS. All authors interpreted the data, edited the manuscript and provided their approval  
435 to publish.

436



437 **Declaration of Interests**

438 The authors have no conflicts of interest to declare.

439

440 **Acknowledgments**

441 We would like to acknowledge the work of all our clinical colleagues at the British  
442 Columbia Centre for Disease Control and across the globe in responding to the COVID-19  
443 pandemic. This work would not have been possible without funding from Genome British  
444 Columbia. We would like to thank Michael Donoghue for managing this multi-stakeholder  
445 project and Karen Chu for assisting as a medical copy editor.

446

447 **References**

448

- 449 1 Zhu N, Zhang D, Wang W, *et al.* A Novel Coronavirus from Patients with Pneumonia in  
450 China, 2019. *N Engl J Med* 2020; **382**: 727–33.
- 451 2 Hoffmann M, Kleine-Weber H, Schroeder S, *et al.* SARS-CoV-2 Cell Entry Depends on  
452 ACE2 and TMPRSS2 and Is Blocked by a Clinically Proven Protease Inhibitor. *Cell* 2020;  
453 **181**: 271-280.e8.
- 454 3 Glowacka I, Bertram S, Herzog P, *et al.* Differential Downregulation of ACE2 by the  
455 Spike Proteins of Severe Acute Respiratory Syndrome Coronavirus and Human  
456 Coronavirus NL63. *J Virol* 2010; **84**: 1198–205.
- 457 4 South AM, Diz DI, Chappell MC. COVID-19, ACE2, and the cardiovascular  
458 consequences. *Am J Physiol Circ Physiol* 2020; **318**: H1084–90.
- 459 5 Sungnak W, Huang N, Bécavin C, *et al.* SARS-CoV-2 entry factors are highly expressed  
460 in nasal epithelial cells together with innate immune genes. *Nat Med* 2020; **26**: 681–7.
- 461 6 Harmer D, Gilbert M, Borman R, Clark KL. Quantitative mRNA expression profiling of  
462 ACE 2, a novel homologue of angiotensin converting enzyme. *FEBS Lett* 2002; **532**: 107–  
463 10.
- 464 7 Yan R, Zhang Y, Li Y, Xia L, Guo Y, Zhou Q. Structural basis for the recognition of

- 465 SARS-CoV-2 by full-length human ACE2. *Science* (80- ) 2020; **367**: 1444–8.
- 466 8 Zoufaly A, Poglitsch M, Aberle JH, *et al.* Human recombinant soluble ACE2 in severe  
467 COVID-19. *Lancet Respir Med* 2020; published online Sept. DOI:10.1016/S2213-  
468 2600(20)30418-5.
- 469 9 Corman VM, Landt O, Kaiser M, *et al.* Detection of 2019 novel coronavirus (2019-nCoV)  
470 by real-time RT-PCR. *Eurosurveillance* 2020; **25**. DOI:10.2807/1560-  
471 7917.ES.2020.25.3.2000045.
- 472 10 Messmann R, Dietl A, Wagner S, *et al.* Alterations of the renin angiotensin system in  
473 human end-stage heart failure before and after mechanical cardiac unloading by LVAD  
474 support. *Mol Cell Biochem* 2020; **472**: 79–94.
- 475 11 Kitajima T, Okita Y, Kawamura M, *et al.* The relationship between preoperative T helper  
476 cytokines in the ileal mucosa and the pathogenesis of pouchitis. *BMC Gastroenterol* 2020;  
477 **20**: 277.
- 478 12 Shirato K, Kawase M, Matsuyama S. Wild-type human coronaviruses prefer cell-surface  
479 TMPRSS2 to endosomal cathepsins for cell entry. *Virology* 2018; **517**: 9–15.
- 480 13 Hologic. Instructions for Using the Aptima Swab Specimen Collection Kit for Patient-  
481 Collected Specimens. 2020.
- 482 14 LeBlanc JJ, Gubbay JB, Li Y, *et al.* Real-time PCR-based SARS-CoV-2 detection in  
483 Canadian laboratories. *J Clin Virol* 2020; **128**: 104433.
- 484 15 Livak KJ, Schmittgen TD. Analysis of Relative Gene Expression Data Using Real-Time  
485 Quantitative PCR and the  $2^{-\Delta\Delta CT}$  Method. *Methods* 2001; **25**: 402–8.
- 486 16 Ho DE, Imai K, King G, Stuart EA. MatchIt : Nonparametric Preprocessing for Parametric  
487 Causal Inference. *J Stat Softw* 2011; **42**. DOI:10.18637/jss.v042.i08.
- 488 17 Gastwirth JL, Gel YR, Miao W. The Impact of Levene’s Test of Equality of Variances on  
489 Statistical Theory and Practice. *Stat Sci* 2009; **24**: 343–60.
- 490 18 Jamshidian M, Jennrich RI, Liu W. A study of partial F tests for multiple linear regression  
491 models. *Comput Stat Data Anal* 2007; **51**: 6269–84.
- 492 19 Fox J, Monette G. Generalized Collinearity Diagnostics. *J Am Stat Assoc* 1992; **87**: 178.
- 493 20 VanderWeele TJ. Principles of confounder selection. *Eur J Epidemiol* 2019; **34**: 211–9.
- 494 21 Rstudio Team. RStudio. 2019.
- 495 22 Bunyavanich S, Do A, Vicencio A. Nasal Gene Expression of Angiotensin-Converting

- 496 Enzyme 2 in Children and Adults. *JAMA* 2020; published online May 20.  
497 DOI:10.1001/jama.2020.8707.
- 498 23 Ni W, Yang X, Yang D, *et al.* Role of angiotensin-converting enzyme 2 (ACE2) in  
499 COVID-19. *Crit Care* 2020; **24**: 422.
- 500 24 Dong Y, Mo X, Hu Y, *et al.* Epidemiology of COVID-19 Among Children in China.  
501 *Pediatrics* 2020; **145**: e20200702.
- 502 25 Bar-On YM, Flamholz A, Phillips R, Milo R. SARS-CoV-2 (COVID-19) by the numbers.  
503 *Elife* 2020; **9**. DOI:10.7554/eLife.57309.
- 504 26 Nakagawa K, Lokugamage KG, Makino S. Viral and Cellular mRNA Translation in  
505 Coronavirus-Infected Cells. 2016: 165–92.
- 506 27 Obukhov AG, Stevens BR, Prasad R, *et al.* SARS-CoV-2 Infections and ACE2: Clinical  
507 Outcomes Linked With Increased Morbidity and Mortality in Individuals With Diabetes.  
508 *Diabetes* 2020; **69**: 1875–86.
- 509 28 Monteil V, Kwon H, Prado P, *et al.* Inhibition of SARS-CoV-2 Infections in Engineered  
510 Human Tissues Using Clinical-Grade Soluble Human ACE2. *Cell* 2020; **181**: 905-913.e7.
- 511 29 Cantuti-Castelvetri L, Ojha R, Pedro LD, *et al.* Neuropilin-1 facilitates SARS-CoV-2 cell  
512 entry and infectivity. *Science (80- )* 2020; : eabd2985.
- 513 30 Bullard J, Dust K, Funk D, *et al.* Predicting Infectious Severe Acute Respiratory  
514 Syndrome Coronavirus 2 From Diagnostic Samples. *Clin Infect Dis* 2020; published  
515 online May 22. DOI:10.1093/cid/ciaa638.

516

517

518

519

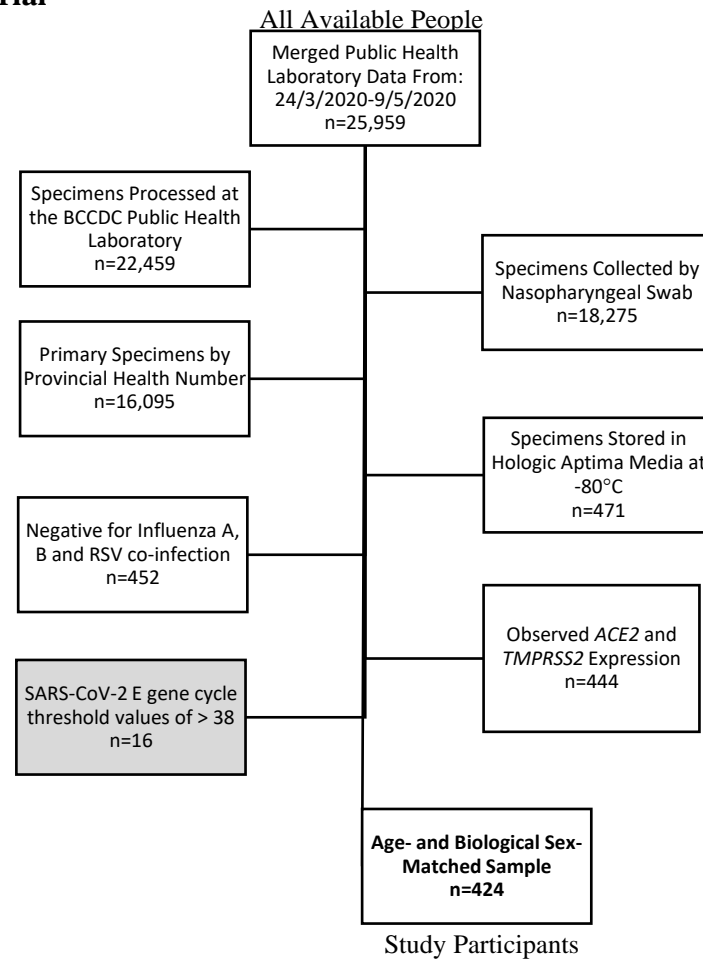
520

521

522

523

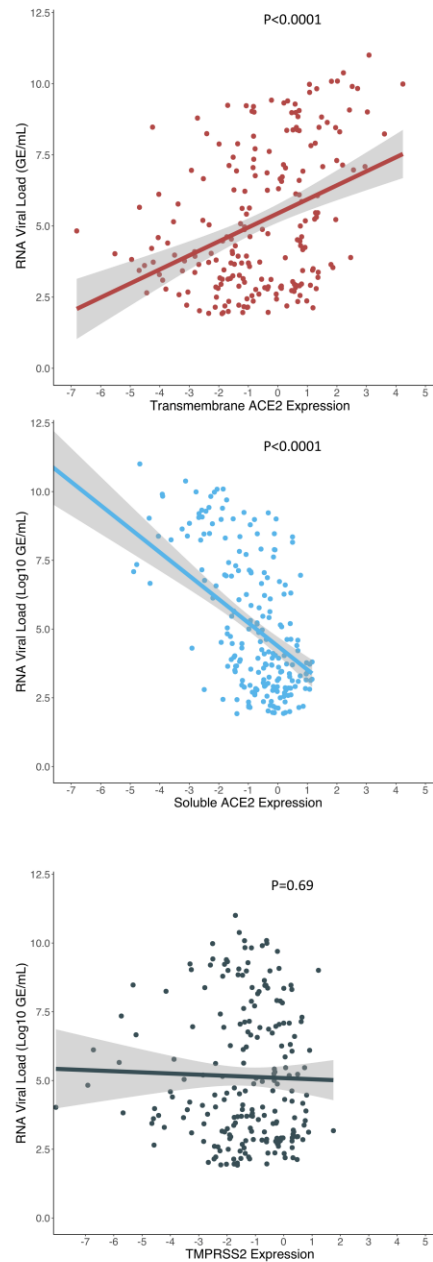
524 **Supplementary Material**



525  
526 **Figure S1: Inclusion, exclusion criteria applied to all people tested for COVID-19 in British**  
527 **Columbia from 24/3/2020-9/5/2020 to select study participants (analytic data).** Specimens from people  
528 tested for COVID-19 with the following criteria were included (white box): tested at the BCCDC-PHL,  
529 specimen was collected by nasopharyngeal swab, test was the primary test by provincial health number,  
530 specimen was suspended in Hologic Aptima™ media and stored at -80°C following testing, negative for  
531 Influenza A, B or Respiratory syncytia virus infection and possessing host gene expression data. Those  
532 with a COVID-19-positive diagnosis, were further restricted by excluding (grey box) SARS-CoV-2 E gene  
533 Ct values of > 38 by qRT-PCR (n=212), and matched in a 1:1 ratio with COVID-19-negative people  
534 (n=212) by age and biological sex (bold text).

535  
536  
537  
538  
539

540



541

542 **Figure S2: Correlation between host gene expression in COVID-19-positive participants and SARS-CoV-2**  
543 **RNA load.** The level of transmembrane *ACE2* (red), soluble *ACE2* (blue) and *TMPRSS2* (black) expression in  
544 positive cases of COVID-19 and its relationship with SARS-CoV-2 RNA is shown in Log<sub>10</sub> genome equivalents per  
545 millilitre (GE/mL). Host gene expression was measured by quantitative real-time PCR and normalized to expression  
546 of the housekeeping gene GAPDH by the ( $2^{-\Delta\Delta C_t}$ ) method. Soluble *ACE2* was defined as absolute relative expression  
547 between the Hs01085333\_m1 (ThermoFisher) and HS01085340\_m1 (ThermoFisher) gene targets (Figure S3).

548 Simple linear regression was used estimate correlations, the reported P values are for the *Beta*-coefficients of host  
549 gene expression.

550

551 **Table S1: Serial Dilution of SARS-CoV-2 RNA for Generation of a Standard Curve by Quantitative Real-**  
552 **Time Polymerase Chain Reaction.**

| <b>Log<sub>10</sub> Dilution</b> | <b>10<sup>0</sup></b> | <b>10<sup>1</sup></b> | <b>10<sup>2</sup></b> | <b>10<sup>3</sup></b> | <b>10<sup>4</sup></b> |
|----------------------------------|-----------------------|-----------------------|-----------------------|-----------------------|-----------------------|
| <b>~GE/mL<sup>‡</sup></b>        | <b>1</b>              | <b>10</b>             | <b>100</b>            | <b>1000</b>           | <b>10,000</b>         |
| <b>R1</b>                        | 36.1                  | 32.6                  | 28.9                  | 25.9                  | 22.8                  |
| <b>R2</b>                        | 35.8                  | 31.9                  | 28.8                  | 25.8                  | 22.8                  |
| <b>R3</b>                        | 34.8                  | 32.3                  | 28.8                  | 25.8                  | 22.8                  |
| <b>R4</b>                        | 35.6                  | 31.7                  | 28.8                  | 25.7                  | 22.8                  |
| <b>R5</b>                        | 34.5                  | 31.9                  | 28.6                  | 25.7                  | 22.3                  |
| <b>R6</b>                        | 34.0                  | 32.1                  | 28.7                  | 25.5                  | 22.7                  |
| <b>R7</b>                        | 34.4                  | 31.9                  | 28.6                  | 25.6                  | 22.8                  |
| <b>R8</b>                        | 34.1                  | 31.4                  | 28.8                  | 25.6                  | 22.8                  |
| <b>R9</b>                        | 34.7                  | 31.4                  | 28.7                  | 25.6                  | 22.9                  |

553 a 5-fold, 1:10 serial dilution of SARS-CoV-2 synthetic RNA was performed over nine independent replicates (n=9)  
554 to measure a standard curve by quantitative real-time PCR targeting the viral E gene.

555 <sup>‡</sup> a simple linear regression model was fit to n=9 replicates of the SARS-CoV-2 RNA standard curve: GE/mL= $b_0 +$   
556  $b_1x_1$ . Where, Genome Equivalents per millilitre (GE/mL) =  $34.5 - 1.27\ln(x)$  and  $R^2 = 0.999$ .

557

It is made available under a [CC-BY-NC-ND 4.0 International license](https://creativecommons.org/licenses/by-nc-nd/4.0/) .

**Homo sapiens angiotensin I converting enzyme 2 (ACE2), transcript variant 2, mRNA NCBI Reference Sequence: NM\_021804.3**

```

5' 1  ggcactcata  catacactct  ggcaatgagg  aactgagct  cgcttctgaa  atttgacaag
61  ataaccacta  aaatctcttt  gaattctatg  ttgttgtgat  cccatgggta  cacagggatca
121 ggagttgaca  tagataactct  ttggatttca  taccatgtgg  aggttttctt  acttccacgt
181 gaccttgact  gagttttgaa  tagcgcccaa  cccaagtcca  aaggctgata  agagagaaaa
241 tctcatgagg  aggttttagt  ctagggaag  tcattcagtg  gatgtgatct  tggctocacag
301 gggacgatgt  caagctcttc  ctggctcctt  ctgagccttg  ttgctgtaac  tgctgtctcag
361 tccaccattg  aggaacaggg  caagacattt  ttggacaagt  ttaaccacga  agccgaagac
421  ctgttctatc  aaagttcact  tgcttcttgg  aattataaca  ccaatattac  tgaagagaat
481 gtccaaaaca  tgaataatgc  tggggacaaa  tggctgcctc  ttttaaagga  acagtccaca
541 cttgccaaag  tgtatccact  acaagaatt  cagaatctca  cagtcagact  tcagctgcag
601 gctcttcagc  aaaatggggtc  ttcagtgtct  tcagaagaca  agagcaaacg  gttgaacaca
661 attcctaata  caatgagcac  catctacagt  actggaagaa  ttgttaacc  agataatcca
721 caagaatgct  tattacttga  accaggtttg  aatgaaataa  ttgcaaacag  tttgacttac
781 aatgagaggg  tctgggcttg  ggaaagctgg  agatctgagg  tcggcaacga  gctgaggcca
841 ttatatgaag  agtatgtggt  cttgaaaaat  gagatggcaa  gagcaaatca  ttatgaggac
901 tatggggatt  attggagagg  agactatgaa  gtaaatgggg  tagatggcta  tgactacagc
961  cggcgccagt  tgattgaaga  tgtggaacat  acctttgagg  agattaaac  attatatgaa
1021  catcttcagt  cctatgtgag  ggcaaatgtg  atgaaatgct  atccttctca  tatcagttca
1081  attggatgct  tccctgtctca  tttgcttgg  gatattgtgg  gtatagttt  gacaaatctg
1141  tactcttga  cagttccctt  tggacagaaa  ccaaacatag  atgttactga  tgcaatgggt
1201  gaccaggcct  gggatgcaca  gagaatattc  aaggaggccc  agaagtctct  tgatctgtt
1261  gttcttctca  atatgactca  aggatcttgg  gaaaattcca  tgctaacgga  cccaggaat
1321  gttcagaag  cagtctgcca  tcccacagct  tgggacctgg  ggaagggcca  cttcaggatc
1381  cttatgtgca  caaaggtgac  aatggacgac  ttctgacag  ctcatcatga  gatggggcat
1441  atccagtatg  atatggcata  tgtgcaacaa  cctttctctg  taagaatgg  agctaatgaa
1501  ggaattccatg  aagctgttgg  ggaatcatg  tcactttctg  cagccaaccc  taagcattta
1561  aaatccattg  gtcttctgtc  acccgatttt  caagaagaca  atgaaacaga  aataaacttc
1621  ctgctcaaac  aagcactcac  gattgttggg  actctgccat  ttacttacat  gttagagaag
1681  tggaggtgga  tggctcttaa  aggggaaatt  cccaaagacc  agtggatgaa  aaagtgttgg
1741  gagatgaagc  gagagatagt  tgggggtggt  gaacctgtgc  cccatgatga  aacatactgt
1801  gaccocycat  ctctgttcca  tgtttctaat  gattactcat  tcattcgata  ttacacaagg
1861  accctttacc  aattccagtt  tcaagaagca  ctttgtcaag  cagctaaaca  tgaagggcct
1921  ctgcacaaat  gtgacatctc  aaactctaca  gaagctggac  agaactgttt  caatatgctg
1981  aggtctggaa  aatcagaacc  ctggacccta  gcattggaaa  atgtttagag  agcaagaac
2041  atgaatgtaa  ggccactgct  caactacttt  gagcccttat  ttacctggct  gaaagaccag
2101  aacaagaatt  cttttgtggg  atggagtacc  gactggagtc  catatgcaga  ccaagcattc
2161  aaagtgaagg  taagcctaaa  atcagctctt  ggagataaag  catatgaatg  gaacgacatt
2221  gaaatgtacc  tgttccgact  atctgttcca  tatgctatga  ggcagttact  tttaaagata
2281  aaaaatcaga  tgattctttt  tggggaggag  gatgtgcgag  tggctaaatt  gaaaccaaga
2341  atctccttta  atttctttgt  cactgcacct  aaaaatgtgt  ctgatattat  tctcagaact
2401  gaagtgtaaa  agcccatcag  gatgtcccgg  agccgtatca  atgatgcttt  ccgtctgaa
2461  gaccaacagcc  tagagtttct  ggggatacag  ccaacacttg  gacctcttaa  ccagccctct
2521  gtttccatat  ggctgattgt  ttttggagtt  gtgatgggg  tgatagttgt  tggcattgtc
2581  atcctgatct  tcaactggat  cagagatcgg  aagaagaaaa  ataaagcaag  aagtggagaa
2641  aatccttatg  cctccatcga  tattagcaaa  ggagaaaaat  atccaggatt  ccaaaaacct
2701  gatgatgttc  agacctcctt  ttagaaaaat  ctatgttttt  cctcttgagg  tgattttgtt
2761  gtatgtaaat  gttaatttca  tggtatagaa  aataaagat  gataaagata  tcattaaatg
2821  tcaaaaactat  gactctgttc  agaaaaaaa  ttgtccaaag  acaacatggc  caaggagaga
2881  gcatcttcat  tgacattgct  ttcagtattt  atttctgtct  ctggatttga  cttctgttct
2941  gtttcttaat  aaggattttg  tattagagta  tattagggaa  agtgtgtatt  tggctcaca
3001  ggctgttcoag  ggataatcta  aatgtaaatg  tctgttgaat  ttctggaagt  gaaaacaagg
3061  atatatcatt  ggagcaagtg  ttggatcttg  tatgaaatg  ggaatgata  cttgtaagga
3121  cagtgcctgg  gaactgtggt  agctgcaagg  attgagaatg  gcatgcata  gctcactttc
3181  atatatcoca  ttgtcaagga  tgacatgctt  tcttccagtg  aactcagttc  aagttatgat
3241  gtgattttgcc  tacagtgatg  ttggaatcag  atcatgcttt  ctccaaggtg  acagttctaa
3301  agagagaaga  atccagggaa  caggtagagg  acattgcttt  ttcacttcca  aggtgcttga
3361  tcaacatctc  cctgacaaca  caaaaactaga  gccaggggct  tccgtgaact  cccagagcat
3421  gcctgataga  aactcatttc  tactgttctc  taactgtgga  gtgaatggaa  atttccactg
3481  tatgttccac  ctctgaagtg  ggtaccaggt  ctcttaaac  ttttatttt  gctcacagtg
3541  tttgagcagt  gctgagcaca  aagcagaac  tcaataaatg  ctagatttac  acactc 3'

```

Legend:  
Transmembrane Domain  
SARS-CoV Binding Domain  
ACE-2 HS01085333\_m1 3'  
[https://www.thermofisher.com/order/genome-database/?pearUXVerSuffix=pearUX2&elcanoForm=true#/ge/assays/ge\\_all/?keyword=HS01085333\\_m1](https://www.thermofisher.com/order/genome-database/?pearUXVerSuffix=pearUX2&elcanoForm=true#/ge/assays/ge_all/?keyword=HS01085333_m1)  
ACE-2 HS01085340\_m1 5'  
[https://www.thermofisher.com/order/genome-database/?pearUXVerSuffix=pearUX2&elcanoForm=true#/ge/assays/ge\\_all/?keyword=HS01085340\\_m1](https://www.thermofisher.com/order/genome-database/?pearUXVerSuffix=pearUX2&elcanoForm=true#/ge/assays/ge_all/?keyword=HS01085340_m1)

558

559

560

**Figure S3: Nasopharyngeal expression of ACE2 was determined by two quantitative real-time polymerase chain reaction targets, one target (yellow) exon spans the ACE2 transmembrane domain.** The other does not include the transmembrane domain (pink) and lays nested between two motifs known to interact with the SARS-CoV receptor binding domain (blue). The measure of soluble ACE2 represents normalized expression of the pink to yellow target, or the proportion of non-transmembrane ACE2 to transmembrane ACE2.

561

562

563

564