

1 **Dynamics of *ORF1ab* and *N* Gene among hospitalized COVID-19 positive** 2 **cohorts: A hospital based retrospective study**

3 Pojul Loying¹, Vaishali Sarma¹, Suranjana C. Hazarika¹, Monjuri Kataki¹, Dina Raja¹, Divyashree
4 Medhi¹, Ridip Dutta¹, Achu Chena¹, Divya Daimary¹, Aakanghita Choudhury¹, Lahari Saikia^{1*}

5 1. Department of Microbiology, Gauhati Medical College and Hospital, Guwahati-781032,
6 Assam, India

7 *Corresponding Author- Email: lahari.saikia@yahoo.com

8

9 **1. Abstract:**

10 **Objective:** The present study hospital based retrospective study aimed at investigating the dynamics
11 of ORF1ab and N gene from hospitalized COVID-19 positive cohorts considering the Ct values of
12 both genes.

13 **Study design and Methodology:** Retrospective analyses of Ct values were done from 115
14 hospitalized COVID-19 positive patients in different time interval. Patients were admitted to the
15 hospital either by RAT or/and RT-PCR and first RT-PCR testing were made after 9 days of
16 incubation followed by testing in every 3 days of interval till negative, subsequently release of the
17 patients.

18 **Results:** We have looked into the dynamics of ORF1ab and N gene and found that N gene require
19 longer duration of days with 12.68 (S.D.±3.24) to become negative than ORF1ab with 12.09
20 (S.D.±2.88) days and it differs significantly ($p=0.012$; $p<0.05$). The persistent of N gene found in 46
21 patients out of 115 (39.65%) to the succeeding reading after 3 days. We have also looked into the
22 mean differences in the between N and ORF1ab genes every readings separately and found that there
23 were no significant differences between the mean Ct value of ORF1ab and N gene except in the day 3
24 ($p=0.015$; $p<0.05$). Further, we have looked into the relationship of age and gender of patients with
25 the duration of positivity; however we did not find any significant role.

26 **Conclusion:** In COVID-19 hospital positive cohorts, the persistent of positivity of N gene is
27 significantly for more duration than ORF1ab. As the SARS-CoV-2 is a new virus and study on it is
28 evolving, so, exhaustive study is required on the dynamic of N gene positivity persistent in relation to
29 the other pathophysiological parameters for the management and control of COVID-19.

30

31

32 **Key words:** COVID-19, SARS-CoV-2, dynamic, RT-PCR, *ORF1ab* gene, *N* gene

33 2. Introduction:

34 A novel Coronavirus, known as Severe Acute Respiratory Syndrome Coronavirus-2 (SARS-CoV-2),
35 initially originated from Wuhan, Hubei province, China in December 2019, wobbled the entire world
36 causing a pandemic disease called Coronavirus-2019 (COVID-19) become a global concerned and
37 disruptive health hazard [1-3]. As of 16th October 2020 (13:30 IST), more than 39.1 million of the
38 world population confirmed positive for SARS-CoV-2 infection with more than 1.1 million death and
39 1% population of active cases are in serious or critical conditions [4]. India, leading the second
40 position after USA with more than 7.3 million confirmed positive cases with 0.11 million death and
41 positive cases still surging exponentially which is a matter of concern [5]. SARS-CoV-2 is a positive
42 strand RNA virus with genome size of 30,000 bases in length and is belongs to *Betacoronavirus*
43 family shares 79% and 50% genome sequence identity with previous epidemic viruses of this family,
44 SARS-CoV and MERS-CoV respectively [2, 6-8]. The virus is characterized by a unique combination
45 of polybasic cleavage sites, a distinctive feature known to increase pathogenicity and transmissibility
46 in other viruses [6, 8]. Despite of all efforts from scientific community across the globe, till date, no
47 such convincing strategy to cure COVID-19 is discovered either in the form of drug or vaccine;
48 however its control is solely depends on management level, be it repurpose drugs or social measures.

49 Reverse Transcriptase Real Time Polymerase Chain Reaction (rtRT-PCR) is a gold standard
50 molecular diagnostic tool to detect wide range of virus due to its rapidity, sensitivity, reproducibility
51 and the reduced risk of contamination and it has become an essential tool for the confirmation of
52 COVID-19 disease by detecting the presence of SARS-CoV-2 from the upper respiratory
53 (nasopharyngeal and oropharyngeal) swab samples [9-11]. Since the first availability whole genome
54 sequencing from Wuhan, many target gene sequences identified for the detection of SARS-CoV-2
55 genome by using RT-PCR and the conserve domains including *N* gene (Nucleocapsid), *RdRp* gene
56 (RNA dependent RNA polymerase), *E* gene (Envelope), *S* gene (Spike), *H* gene (Helicase), *HE* gene
57 (Hemagglutinin-esterase) and ORF (Open reading frame) group of genes [7, 12-16]. More than two
58 third of the SARS-CoV-2 genome encoded by *ORF1ab* gene of 21,290 nucleotides at the 5' end and
59 in addition 6 other ORF genes including *ORF3a*, *ORF6*, *ORF7a*, *ORF7b*, and *ORF8* genes [7].
60 Nucleocapsid, a type of structural protein of SARS-CoV-2 is encoded by 908 nucleotides *N* gene at
61 the near 3' end and it's a potential target for the detection of virus as recommended by CDC, United
62 States [7, 17]. It is always advisable to use two molecular targets at a time to avoid potential cross-
63 reaction with other endemic coronaviruses as well as potential genetic drift of SARS-CoV-2 [18, 19].
64 Studies from many countries reveal that investigators adopting two target strategy like Berlin Institute
65 of Virology, Berlin and German Centre for Infection Research (DZIF), Berlin, Germany used *RdRp*
66 and *E* gene [16]; National Institute for Viral Disease Control, China CDC used *ORF1ab* and *N* gene
67 [20]; CDC, United States used two loci of *N* gene (*N1* and *N2*) [17].

68 Threshold cycle (Ct) value of a target gene in RT-PCR based viral molecular diagnosis not only gives
69 information about the presence or absence of a virus, apart it also helps in understanding the dynamics

70 of a virus in due course of infection; however, clinical importance is limited due to various laboratory
71 complications [21, 22]. The Ct value is defined as the cycle number when the sample fluorescence
72 exceeds a chosen threshold and signifies by lower the Ct value of a specific gene, the more the gene
73 exists in the sample [22, 23]. Ct values are therefore inversely related to viral load and can provide an
74 indirect method of quantifying the copy number of viral RNA in the sample; eventually the viral load
75 [24]. Viral dynamics knowledge is essential for formulating strategies for treatment, management and
76 epidemiological control of COVID-19 [25]. In a cohort study by Chen, Y. *et al.* on oropharyngeal
77 saliva samples shown the dynamics where salivary viral load was highest during the first week after
78 symptom onset and subsequently declined with time [26]. SARS-CoV-2 viral load in upper
79 respiratory specimens of infected patients observed the progressive decrease of viral load over time
80 with positivity persist till 17–21 days after onset of symptoms [27]. Many studies on viral dynamics of
81 COVID-19 positive cohorts evidenced that Ct value of a target gene is inversely proportional to viral
82 loads irrespective of patient's conditions; however several technical problems need to be considered
83 from sample collection to RT-PCR testing [28-32].

84 Till date, no such comprehensive study on the dynamics of virus in hospitalized COVID-19 patients
85 in different time point, till negative and discharge has been made. In the present study, we are
86 exhaustively exploring the dynamics of *ORF1ab* and *N* gene from the 115 (one hundred and fifteen)
87 hospitalized COVID-19 positive cohorts of India using different time interval, starting from the first
88 RT-PCR test to the negative, eventually discharged.

89 **3. Materials and Methods:**

90 **3.1. Study design:**

91 The present study was carried out to characterize the dynamics of *ORF1ab* and *N* gene in 115
92 hospitalized COVID-19 positive patients at Gauhati Medical College and Hospital (GMCH), Assam,
93 India. The hospital is one among the major and largest in COVID-19 testing and treatment in eastern
94 India. Only two parameters; age and gender of patients were considered for the study. Any other
95 parameters like source of infection, patient conditions, treatment regime and other comorbidities were
96 not considered for this study. The COVID-19 positive confirmation was made as per the guidelines of
97 Indian Council of Medical Research (ICMR), Govt. of India. The RT-PCR profiling was performed
98 for the hospitalized COVID-19 positive patients at regular time interval and Ct values were recorded
99 from the day of first testing in the hospital till negative; subsequently discharge of the patients. The
100 patients were hospitalized after being tested positive either by Rapid Antigen Test or RT-PCR. All the
101 patients were kept for 9 (nine) days incubation followed by first tests and subsequently tests after 3
102 (three) days of interval till negative. The day 9, day of first testing was taken as 0 (zero) day;
103 technically the days of testing are considered as (9+n); where n is 0, 3, 6... days (**Figure 1**). The Ct
104 values of RT-PCR results were considered for study and all the negative results were taken as Ct
105 value of 40 for the convenient of the study. The RT-PCR data were collected in the month of

106 September, 2020. RT-PCR data were taken for analysis after approval from institutional ethical
107 committee (IEC), GMCH. Consent from the positive patients was waived due to the retrospective
108 nature of the analysis.

109 **3.2. Sample collection, processing and RNA extraction:**

110 All the kits used for the present study were approved by Indian Council for Medical Research
111 (ICMR), Govt. of India. Throat swab and deep nasal swab samples were collected for SARS-CoV-2
112 detection from hospitalized COVID-19 positive patients by using sterile swab stick and subsequently
113 both swabs were put in ViSure Transport Kit (Labsystems Diagnostics, Finland). The samples were
114 further processed in laboratory by vortex and aliquots were made in 1.5 ml MCT. RNA from the
115 processed samples was extracted by using QIAmp Viral RNA Mini Kit (QIAGEN, Germany)
116 following manufacturer guidelines.

117 **3.3. RT-PCR for SARS-CoV-2 detection:**

118 One Step Reverse Transcriptase Real Time Polymerase Chain Reaction (RT-PCR) were performed to
119 detect the presence or absence of *ORF1ab* and *N* gene using Taqman probe based multicolor Meril
120 COVID-19 One-step RTPCR Kit (Meril Diagnostics, Belgium) in CFX96 Touch Real-Time PCR
121 Detection System RT-PCR platform (Bio-Rad Laboratories, Inc.). Meril COVID-19 One-step RTPCR
122 Kit is approved by Drug Controller General of India (DCGI), Food and Drug Administration (FDA)
123 and Foundation for Innovative New Diagnostics (FIND), Govt. Of India as RT-PCR molecular test
124 that can be used in patient care settings [19]. Only single kit was considered for the experiment due kit
125 to kit variations and issue of efficiency. The reaction mixture preparation and amplification program
126 was used as per manufacturer recommendation. The result interpretation was made according to
127 manufacturer instruction considering threshold cycle value ($C_t \leq 40$) for both *ORF1ab* & *N* genes and
128 Internal Control (IC).

129 **3.4. Statistical analysis:**

130 Continuous variables were first tested for normality and homogeneity of variance, and accordingly
131 proceed with the succeeding tests. The continuous variables with two groups were tested using Welch
132 Two Sample t-test or Mann-Whitney U test. Continuous variables with more than two groups were
133 tested using Kruskal-Wallis rank sum test followed by Dunn's Multiple Comparison test to compare
134 the differences between the groups. Categorical values were tested using Chi-Square test for
135 Independence. For all the tests, P-Values less than 0.05 were considered as statistically significant. All
136 statistical analyses were performed in R (version 4.0.0) and SPSS (version 16.0) software. The
137 graphical representations were created in R software (version 4.0.0) using GGPlot2 package.

138

139

140 4. Results and Discussion:

141 To study the dynamics of *ORF1ab* and *N* gene in hospitalized COVID-19 positive cohorts from
142 nasopharyngeal and oropharyngeal swab, we have considered 115 patients from an Indian COVID-19
143 hospital for the present retrospect study.

144 Our study shows that the Ct value gradually increases (tends to 40) with time in the succeeding
145 readings (**Figure 2a**). We have also considered Ct value ≥ 40 as negative for SARS-CoV-2. Further,
146 we have observed that the *ORF1ab* and *N* gene positivity of patients also decreases with time i.e. in
147 every succeeding RT-PCR (**Figure 2b**). This changes in mean Ct values with succeeding days was
148 found significant for both the genes ($p=0.01$; $p<0.05$); however, in post hoc analysis it differs (**Table**
149 **1**). Low Ct value in RT-PCR is considered as high viral load and vice versa, though various
150 experimental pitfalls have to consider [21, 33]. Few studies on dynamics of SARS-CoV-2 viral load
151 evidenced that higher Ct value correlate with low viral load and Ct value or viral load has somehow
152 correlation with symptoms, disease progression, disease severity and death [24, 28, 30, 32, 34]. La
153 Scola B. *et al* cultured SARS-CoV-2 on Vero cell line and show that there was a clear correlation
154 between Ct value and viral load in culture. In the study, they found growth in culture from the patients
155 with $Ct \leq 34$; however, no growth observed in Ct more than 34 and patients were discharged [35].

156 Our dynamic study show that *ORF1ab* gene required less time to become negative with mean value of
157 3.09 (S.D. ± 2.88) days to become negative from the day of 1st testing; where overall days from the
158 day of hospital admission was (9+n), where '9' is the incubation days common for all and 'n' is the
159 number of days after 1st testing i.e. 12.09 (S.D. ± 2.88) days than *N* gene. For *N* gene, mean days to
160 become negative is 3.68 (S.D. ± 3.24) from the 1st testing with overall days of 12.68 (S.D. ± 3.24). The
161 overall range of days for negative for *ORF1ab* is 12 to 21 and *N* gene is 12 to 25. Comparison
162 between the mean days of two genes using Welch's t-test showed the persistent of *N* gene is
163 significantly for longer period than *ORF1ab* gene ($p=0.012$; $p<0.05$) (**Figure 3**). The persistent of *N*
164 gene found in 46 patients out of 115 (39.65%) to the succeeding reading after 3 days. In a study on the
165 correlation between Ct value of *N* gene show that persistent is significantly for longer period in
166 female than male; however, there was an strong correlation observed in between male and persistence
167 of virus for longer period [34]. In a preprint article, a study done on Moroccan hospitalized positive
168 cohorts show than *N* gene persist for long days than *RdRp* and *E* gene in 3% of study populations
169 [36]. However, the exact mechanism of the persistent of *N* gene in nasopharyngeal and throat swab
170 for longer is not well studied. In an extensive review on Coronavirus N protein by McBride R, *et al*
171 explained that the N protein is abundantly produced within infected cells and perform multiple
172 functions including binding to viral RNA to form the ribonucleocapsid and has also been proposed to
173 have roles in virus replication, transcription and translation [37]. In an extensive study by Wolfel R, *et al*
174 explained that that positive detection of SARS-CoV-2 reflects the presence of RNA, not necessarily
175 viable [38]. From the above information, we can assume that persistent of *N* gene for longer duration,
176 may be a detection from our own infected cells, not from virus; as no growth observed in cell culture

177 in Ct more than 34 by La Scola, *et al*, or from nonviable SARS-CoV-2; however an extensive study is
178 must need [35, 38].

179 One may argue that the persistent of *N* gene for longer period may arise due to sensitivity of *N* over
180 *ORF1ab*. To address this question we have looked into the mean differences in the between *N* and
181 *ORF1ab* genes every readings separately. We found that there were no significant differences
182 between the mean Ct value of *ORF1ab* and *N* gene except in the day 3 ($p=0.015$; $p<0.05$) (**Figure 4**)
183 (**Table 2**). The particular finding nullified the issue of sensitivity of two genes. Further, we looked
184 into the relationship of age and gender with the duration of positivity and we found that there was no
185 significant role of age and gender with the positivity duration.

186 **5. Conclusion:**

187 In this work, we have shown the dynamics of *ORF1ab* and *N* gene from the oro- and nasopharyngeal
188 swab of hospitalized COVID-19 positive cohorts, where the mean day duration required to become
189 negative for *N* gene with 12.68 (S.D. \pm 3.24) is significantly longer than the *ORF1ab* gene 12.09
190 (S.D. \pm 2.88). In 46 out of 115 (39.65%) patients, the persistent of *N* gene was found, with maximum
191 days required for negative for *N* gene is for 25 days whereas 21 days for *ORF1ab* gene. Further, we
192 have looked into the relationship of age and gender of patients with the duration of positivity;
193 however we did not find any significant role.

194 As the study on SARS-CoV-2 is evolving, there is a lack of knowledge on viral gene dynamics,
195 especially persistent of *N* gene that we have shown, and correlation of persistent with the
196 pathogenesis and pathophysiology of this novel virus infection. Exhaustive study on the persistent of
197 *N* gene will give more information in the control and management of this pandemic COVID-19.

198 **6. Declaration of Competing Interest:**

199 All authors declare no conflict of interest.

200 **7. Acknowledgement:**

201 Authors acknowledge Puja Bishaya, a PhD student, Cotton University, Assam, India for her proactive
202 help in statistical analysis.

203 **8. References:**

- 204 1. Wang, C., et al., *A novel coronavirus outbreak of global health concern*. Lancet, 2020.
205 **395**(10223): p. 470-473.
- 206 2. Hu, B., et al., *Characteristics of SARS-CoV-2 and COVID-19*. Nat Rev Microbiol, 2020.
- 207 3. The, L., *Emerging understandings of 2019-nCoV*. Lancet, 2020. **395**(10221): p. 311.
- 208 4. Worldmeter, <https://www.worldometers.info/coronavirus/>, 16/10/2020, 13:30 IST.
- 209 5. Worldmeter, <https://www.worldometers.info/coronavirus/country/india/>, 16/10/2020, 13:30
210 IST.
- 211 6. Walls, A.C., et al., *Structure, Function, and Antigenicity of the SARS-CoV-2 Spike Glycoprotein*.
212 Cell, 2020. **181**(2): p. 281-292 e6.

- 213 7. Khailany, R.A., M. Safdar, and M. Ozaslan, *Genomic characterization of a novel SARS-CoV-2*.
214 Gene Rep, 2020. **19**: p. 100682.
- 215 8. Abdelrahman, Z., M. Li, and X. Wang, *Comparative Review of SARS-CoV-2, SARS-CoV, MERS-*
216 *CoV, and Influenza A Respiratory Viruses*. Front Immunol, 2020. **11**: p. 552909.
- 217 9. Mackay, I.M., K.E. Arden, and A. Nitsche, *Real-time PCR in virology*. Nucleic Acids Res, 2002.
218 **30**(6): p. 1292-305.
- 219 10. La Marca, A., et al., *Testing for SARS-CoV-2 (COVID-19): a systematic review and clinical*
220 *guide to molecular and serological in-vitro diagnostic assays*. Reprod Biomed Online, 2020.
221 **41**(3): p. 483-499.
- 222 11. Venter, M. and K. Richter, *Towards effective diagnostic assays for COVID-19: a review*. J Clin
223 Pathol, 2020. **73**(7): p. 370-377.
- 224 12. Wu, F., et al., *A new coronavirus associated with human respiratory disease in China*. Nature,
225 2020. **579**(7798): p. 265-269.
- 226 13. Dharavath, B., et al., *A one-step, one-tube real-time RT-PCR based assay with an automated*
227 *analysis for detection of SARS-CoV-2*. Heliyon, 2020. **6**(7): p. e04405.
- 228 14. Junejo, Y., et al., *Novel SARS-CoV-2/COVID-19: Origin, pathogenesis, genes and genetic*
229 *variations, immune responses and phylogenetic analysis*. Gene Rep, 2020. **20**: p. 100752.
- 230 15. Chan, J.F., et al., *Improved Molecular Diagnosis of COVID-19 by the Novel, Highly Sensitive*
231 *and Specific COVID-19-RdRp/Hel Real-Time Reverse Transcription-PCR Assay Validated In*
232 *Vitro and with Clinical Specimens*. J Clin Microbiol, 2020. **58**(5).
- 233 16. Corman, V.M., et al., *Detection of 2019 novel coronavirus (2019-nCoV) by real-time RT-PCR*.
234 Euro Surveill, 2020. **25**(3).
- 235 17. Holshue, M.L., et al., *First Case of 2019 Novel Coronavirus in the United States*. N Engl J Med,
236 2020. **382**(10): p. 929-936.
- 237 18. Tang, Y.W., et al., *Laboratory Diagnosis of COVID-19: Current Issues and Challenges*. J Clin
238 Microbiol, 2020. **58**(6).
- 239 19. Priyadarshi, K., Nag, V.J., Kombade, S.P., Gadepalli, R.S., Misra, S., Singh K., *Molecular*
240 *Diagnosis of COVID-19: An Update and Review*. Ann Natl Acad Med Sci (India) 2020. **00**: p. 1-
241 11.
- 242 20. Li, Q., et al., *Early Transmission Dynamics in Wuhan, China, of Novel Coronavirus-Infected*
243 *Pneumonia*. N Engl J Med, 2020. **382**(13): p. 1199-1207.
- 244 21. Wishaupt, J.O., et al., *Pitfalls in interpretation of CT-values of RT-PCR in children with acute*
245 *respiratory tract infections*. J Clin Virol, 2017. **90**: p. 1-6.
- 246 22. Chang, M.C., J. Hur, and D. Park, *Interpreting the COVID-19 Test Results: A Guide for*
247 *Physiatrists*. Am J Phys Med Rehabil, 2020. **99**(7): p. 583-585.
- 248 23. Kawase, J., et al., *Rapid and Accurate Diagnosis Based on Real-Time PCR Cycle Threshold*
249 *Value for the Identification of Campylobacter jejuni, astA Gene-Positive Escherichia coli, and*
250 *eae Gene-Positive E. coli*. Jpn J Infect Dis, 2018. **71**(1): p. 79-84.
- 251 24. Rao, S.N., et al., *A Systematic Review of the Clinical Utility of Cycle Threshold Values in the*
252 *Context of COVID-19*. Infect Dis Ther, 2020. **9**(3): p. 573-586.
- 253 25. Chen, Y. and L. Li, *SARS-CoV-2: virus dynamics and host response*. Lancet Infect Dis, 2020.
254 **20**(5): p. 515-516.
- 255 26. To, K.K., et al., *Temporal profiles of viral load in posterior oropharyngeal saliva samples and*
256 *serum antibody responses during infection by SARS-CoV-2: an observational cohort study*.
257 Lancet Infect Dis, 2020. **20**(5): p. 565-574.
- 258 27. Zou, L., et al., *SARS-CoV-2 Viral Load in Upper Respiratory Specimens of Infected Patients*. N
259 Engl J Med, 2020. **382**(12): p. 1177-1179.
- 260 28. Zhou, R., et al., *Viral dynamics in asymptomatic patients with COVID-19*. Int J Infect Dis,
261 2020. **96**: p. 288-290.
- 262 29. Faico-Filhoa, K.S.P., V.S., Belleia, N. and . *Is Higher Viral Load in SARS-CoV-2 Associated With*
263 *Death?* medRxiv, Pre-print server, 2020.
- 264 30. Xiao, A.T., et al., *Dynamic profile of RT-PCR findings from 301 COVID-19 patients in Wuhan,*
265 *China: A descriptive study*. J Clin Virol, 2020. **127**: p. 104346.

266 31. Lv, D.F., et al., *Dynamic change process of target genes by RT-PCR testing of SARS-Cov-2*
 267 *during the course of a Coronavirus Disease 2019 patient*. Clin Chim Acta, 2020. **506**: p. 172-
 268 175.
 269 32. Xu, T., et al., *Clinical features and dynamics of viral load in imported and non-imported*
 270 *patients with COVID-19*. Int J Infect Dis, 2020. **94**: p. 68-71.
 271 33. Fuller, J.A., et al., *Association of the CT values of real-time PCR of viral upper respiratory tract*
 272 *infection with clinical severity, Kenya*. J Med Virol, 2013. **85**(5): p. 924-32.
 273 34. Zheng, S., et al., *Viral load dynamics and disease severity in patients infected with SARS-CoV-*
 274 *2 in Zhejiang province, China, January-March 2020: retrospective cohort study*. BMJ, 2020.
 275 **369**: p. m1443.
 276 35. La Scola, B., et al., *Viral RNA load as determined by cell culture as a management tool for*
 277 *discharge of SARS-CoV-2 patients from infectious disease wards*. European Journal of Clinical
 278 Microbiology & Infectious Diseases, 2020. **39**(6): p. 1059.
 279 36. Benrahma, H., et al., *Epidemiological description and analysis of RdRp, E and N genes*
 280 *dynamic by RT-PCR of SARS-CoV-2 in Moroccan population: Experience of the National*
 281 *Reference Laboratory (LNR)-UM6SS*. medRxiv, 2020.
 282 37. McBride, R., M. Van Zyl, and B.C. Fielding, *The coronavirus nucleocapsid is a multifunctional*
 283 *protein*. Viruses, 2014. **6**(8): p. 2991-3018.
 284 38. Wolfel, R., et al., *Virological assessment of hospitalized patients with COVID-2019*. Nature,
 285 2020. **581**(7809): p. 465-469.

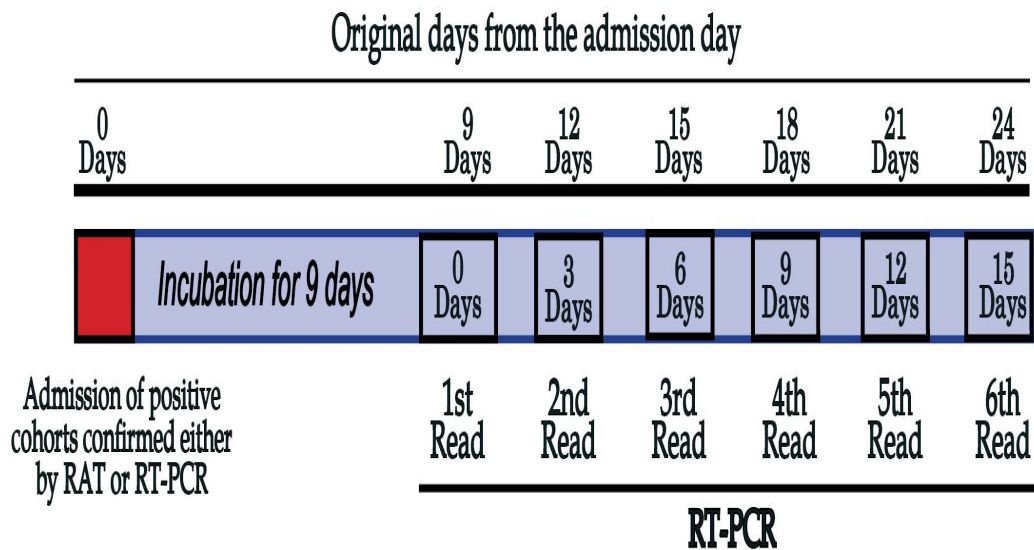
286

287

288

Figures and Table

289 **Figure 1: Overall strategy for RT-PCR test of hospitalized COVID-19 positive patients.**



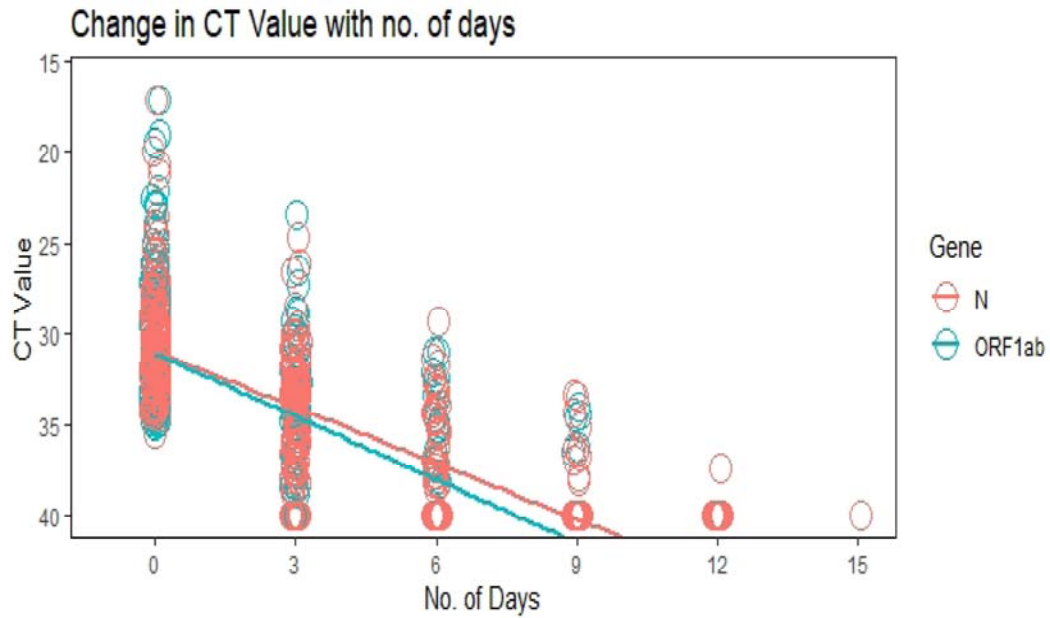
290

291

292

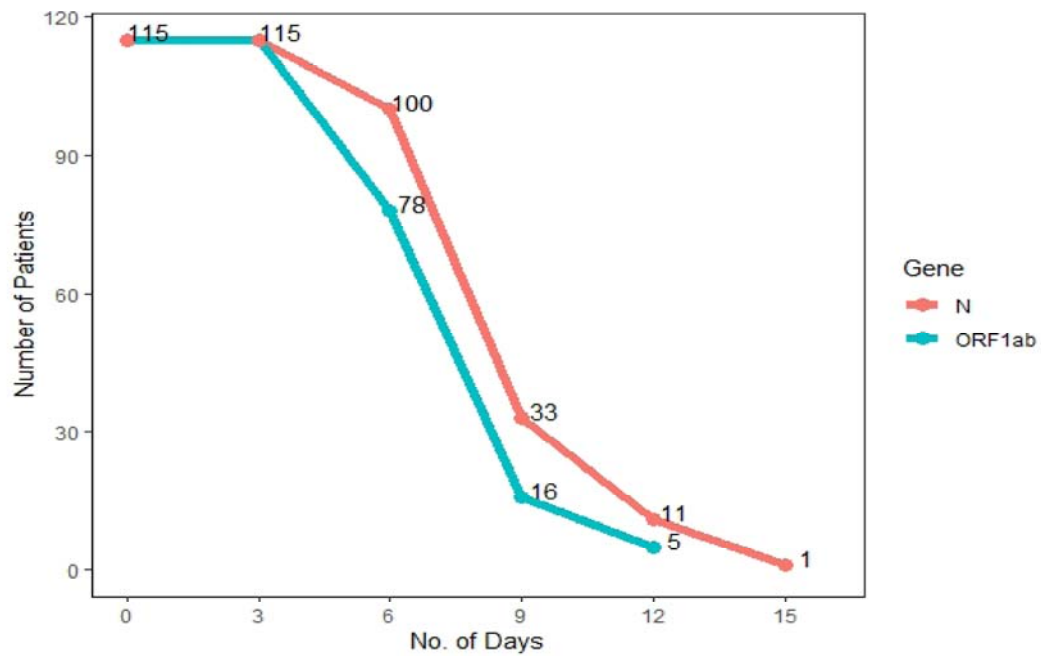
293

294 **Figure 2: Distribution of Ct value of *ORF1ab* and *N* gene vs. RT-PCR reading at different time**
295 **point**



296

297 **Figure 2b: Distribution of *ORF1ab* and *N* gene of patients in every succeeding RT-PCR**
298 **readings.**



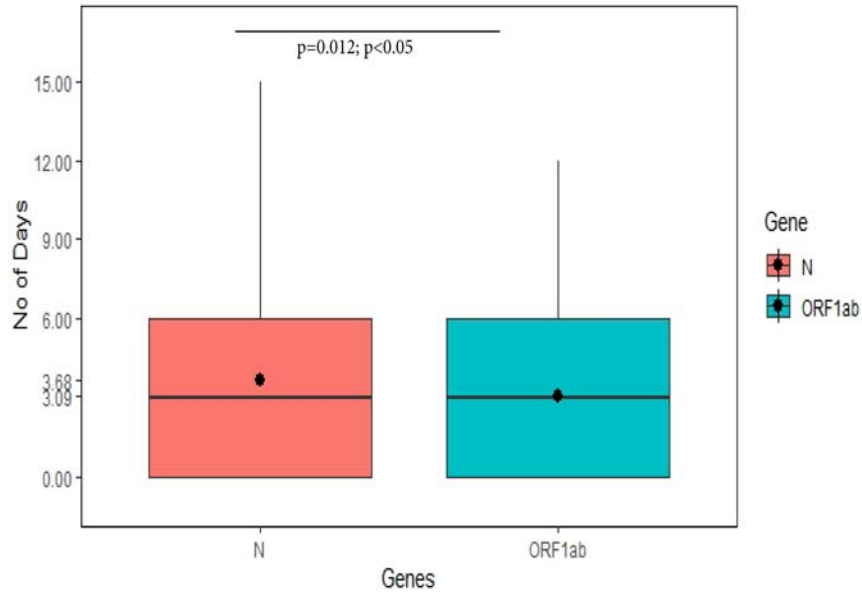
299

300

301

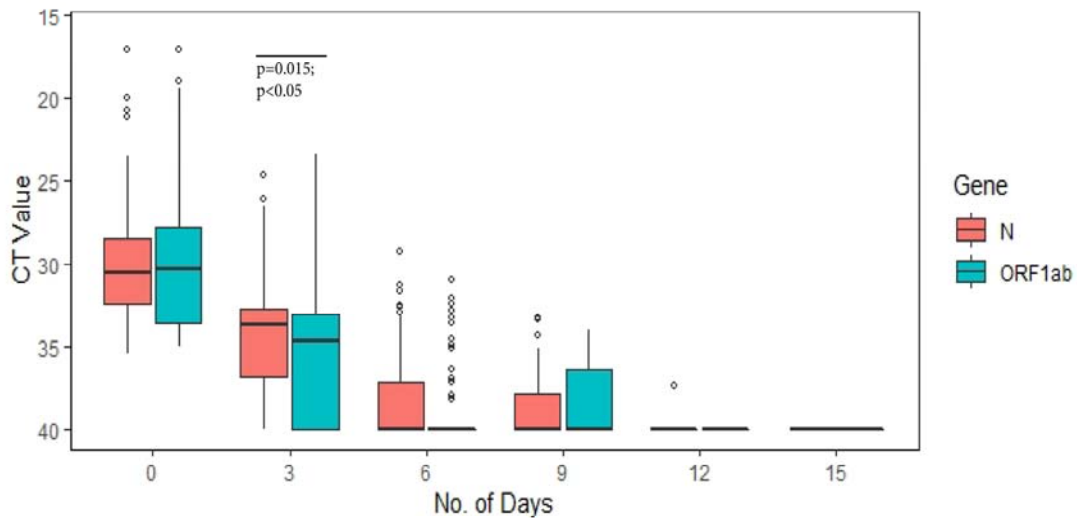
302

Figure 3: Differences in mean duration of days between *ORF1ab* and *N* gene



303

Figure 4: Difference between mean Ct value of *ORF1ab* and *N* gene in different time point



305

Table 1: Post hoc test to show the changes in mean Ct values with succeeding days

		Kruskal-wallis post hoc P values								
		<i>ORF1ab</i> gene				<i>N</i> gene				
DAYS		3	6	9	12	DAYS	3	6	9	12
0		0.01*	0.01*	0.01*	0.01*	0	0.01*	0.01*	0.01*	0.01*
3			0.01*	0.01*	0.04*	3		0.01*	0.01*	0.01*
6				0.09	0.58	6			0.67	0.42
9					0.65	9				0.58

307 * Significant ($p < 0.05$)

308

309 **Table 2: Mean Ct value of RT-PCR in different time point with other statistical parameters**

RT-PCR	Days	Gene	Total No.	Mean Ct	Std. Dev.	Sig.	Test
1	0 Days (9 Days)	<i>ORF1ab</i>	115	30.08	3.84	0.988	t-test
		<i>N</i>	115	30.09	3.28		
2	3 Days (12 Days)	<i>ORF1ab</i>	115	34.54	3.27	0.015*	Mann-Whitney U test
		<i>N</i>	115	35.64	3.79		
3	6 Days (15 Days)	<i>ORF1ab</i>	78	38.74	2.56	0.390	Welch's t-test
		<i>N</i>	100	38.41	2.59		
4	9 Days (18 Days)	<i>ORF1ab</i>	16	38.5	2.38	0.726	Welch's t-test
		<i>N</i>	33	38.7	2.14		
5	12 Days (21 Days)	<i>ORF1ab</i>	5	40.0	0.00	0.343	Welch's t-test
		<i>N</i>	11	39.7	0.82		
6	12 Days (21 Days)	<i>ORF1ab</i>					
		<i>N</i>	1				

310 * Significant ($p < 0.05$)

311