

Comparing COVID-19 and influenza presentation and trajectory

Anat Reiner Benaim Ph.D.^{1,*}, Jonathan Aryeh Sobel Ph.D.^{2,*}, Ronit Almog M.D. MPH¹, Snir Lugassy², Tsviel Ben Shabbat BSc.², Alistair Johnson Ph.D.³, Danny Eytan M.D. Ph.D.^{1,+}, and Joachim A. Behar Ph.D.^{2,+✉}

¹Rambam Health Care Campus, Haifa, Israel

²Faculty of Biomedical Engineering, Technion, Israel Institute of Technology, Haifa, Israel

³MIT Institute for Medical Engineering and Science, Massachusetts Institute of Technology, Cambridge, Massachusetts, USA

co-first authorship

+co-senior authorship

Background: COVID-19 is a newly recognized illness with a predominantly respiratory presentation. It is important to characterize the differences in disease presentation and trajectory between COVID-19 patients and other patients with common respiratory illnesses. These differences can enhance knowledge of pathogenesis and help in guiding treatment.

Methods: Data from electronic medical records were obtained from individuals admitted with respiratory illnesses to Rambam Health Care Campus, Haifa, Israel, between October 1st, 2014 and October 1st, 2020. Four groups of patients were defined: COVID-19 (693), influenza (1,612), severe acute respiratory infection (SARI) (2,292) and Others (4,054). The variable analyzed include demographics (7), vital signs (8), lab tests (38), and comorbidities (15) from a total of 8,651 hospitalized adult patients. Statistical analysis was performed on biomarkers measured at admission and for their disease trajectory in the first 48 hours of hospitalization, and on comorbidity prevalence.

Results: COVID-19 patients were overall younger in age and had higher body mass index, compared to influenza and SARI. Comorbidity burden was lower in the COVID-19 group compared to influenza and SARI. Severely- and moderately-ill COVID-19 patients older than 65 years of age suffered higher rate of in-hospital mortality compared to hospitalized influenza patients. At admission, white blood cells and neutrophils were lower among COVID-19 patients compared to influenza and SARI patients, while pulse rate and lymphocyte percentage were higher. Trajectories of variables during the first two days of hospitalization revealed that white blood count, neutrophils percentage and glucose in blood increased among COVID-19 patients, while decreasing among other patients.

Conclusions: The intrinsic virulence of COVID-19 appeared higher than influenza. In addition, several critical functions, such as immune response, coagulation, heart and respiratory function and metabolism were uniquely affected by COVID-19.

COVID-19 | influenza | SARI | biomarkers

Correspondence: jbehar@technion.ac.il

Introduction

Severe acute respiratory syndrome coronavirus 2 (SARS-CoV-2), is the virus underlying COVID-19, a newly recognized illness that initially spread throughout Wuhan (Hubei province), and from there, to other provinces in China and then across the globe. As of October 15th 2020, over 39,000,000 infections and over 1,100,000 casualties

have been linked to SARS-CoV-2. The clinical spectrum of SARS-CoV-2-associated pneumonia ranges from mild to life-threatening (1, 2). Several studies have described general epidemiological findings, clinical presentation and clinical outcomes of SARS-CoV-2 pneumonia, and identified mortality risk factors (3–9). The need for detailed information on the clinical characteristics of hospitalized patients with COVID-19 and their clinical course is essential to achieve a thorough understanding of the disease development and progression. Moreover, the exact differences between the clinical presentation and illness trajectory of COVID-19 versus other respiratory (viral) infections remain illusive. Investigating the clinical features of influenza like illness (ILI) is of paramount importance to identify COVID-19 specificities. This work questioned the virulence of COVID-19 as compared to seasonal influenza and SARI. Recognizing the characteristics discriminating COVID-19 from influenza, will be critical to support the management of the current pandemic. There are limited works that have pursued the pathophysiological differences between ILIs and COVID-19, and have focused solely on the H1N1 influenza strain (10–13). They investigated symptoms, comorbidities, laboratory examinations, treatments and scans in relatively small cohorts of patients and consequently had limited statistical power. Hence, the relative virulence of COVID-19 versus influenza has been and remains under debate. Discriminating biomarkers at clinical presentation and characteristics of the trajectory of COVID-19 versus influenza are poorly characterized.

To address this knowledge gap, this retrospective analysis reviewed the electronic medical records (EMR) from the Rambam Health Care Campus, located in Haifa, Israel. Demographics, comorbidities, vital signs and laboratory tests were analyzed to identify features that can potentially discriminate between COVID-19, influenza and SARI at the time of admission to the hospital, as well as their trajectory during the first 48 hours after admission.

Methods

Data Source. A unique cloud-based database, named COV19, was created based on the model of MIMIC III (14). The database contained detailed de-identified clinical information. Specific views (tables) that contained multiple variables related to a given type of medical data, were created.

NOTE: This preprint reports new research that has not been certified by peer review and should not be used to guide clinical practice.

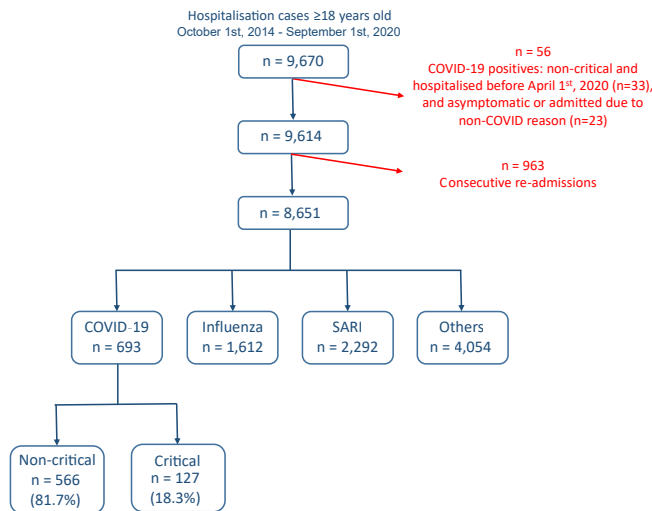


Fig. 1. Cohort selection and criteria for exclusion. Data from a total of 9,670 admitted cases were extracted from the Rambam Health Care Campus electronic medical records system.

Ethical approval for this research was provided by the local institutional review board (IRB; #0141-20). The de-identified datasets were uploaded to a Microsoft Azure cloud server, which also offers data analysis, visualization and querying tools. The description of the tables and variables included in COV19 is available on the online resource site (<https://cov19-resource.com/>). Future access to the cloud can be given to interested researchers, subject to hospital IRB approval.

Study population. This single center retrospective observational cohort study uses EMR data from Rambam Health Care Campus, a 1000-bed tertiary academic hospital in Northern Israel, during which the pandemic opened five dedicated COVID-19 departments. The hospital EMR database was queried for hospitalized adult (age 18 and above) cases admitted for COVID-19, influenza or SARI, or tested for COVID-19 during hospitalization (with either a positive or negative result), from October 1st, 2014 until October 1st, 2020.

Disease groups. The disease groups were defined as follows: **COVID-19:** At least one positive reverse transcription polymerase chain reaction (RT-PCR) test for SARS-CoV-2 in nasopharyngeal swab. Most COVID-19 cases were positive within a week before admission to the hospital or at admission, and very few of them were diagnosed a few days after admission. COVID-19 were also tested for Influenza. **Influenza:** tested positive for influenza A or B virus by RT-PCR test and tested negative for COVID-19, or tested positive for influenza A or B virus by RT-PCR test and admission date prior to COVID-19 emergence in Israel, on February 23, 2020. **SARI only:** Physician report in the EMR that matches World Health Organization (WHO) SARI case definition (15) i.e., an acute respiratory infection with history of fever or measured fever of 38°C , and cough with onset within the last 10 days, hospitalization, and no positive test for COVID-

19 or influenza (either negative or not tested). **Others:** Tested negative for COVID-19 and not classified into influenza or SARI groups.

40% of the SARI cases were tested for Influenza, when indicated by the physician for differential diagnosis or for the purpose of surveillance during the influenza season. As the cohort is defined by inclusion criteria as all patients tested for COVID-19, or either testing positive for influenza or having a SARI diagnosis, the "others" group is a control group inevitably generated by those with negative result for COVID-19, that are also negative for Influenza and SARI. Thus this group contains zero cases prior to February 23, 2020, the date of COVID-19 emergence in Israel. After this date, which approaches the end of the Influenza season, only 5% of the patients in "others" group were tested for Influenza. Tests for COVID-19 after its emergence were performed for 80% of the SARI patients, and by inclusion criteria, for all patients in "others".

COVID-19 Severity. Following existing guidelines within the context of COVID-19 (16–18), patients were defined as moderately ill if they were diagnosed for COVID-19 pneumonia clinically or by x-ray. Patients were defined as severely ill if either their breaths number per minute was larger than 30, their unsupported oxygen saturation was of 93% or lower, their PF ratio was below 300, or were critically ill. Critically ill patients were defined as those who either went through mechanical ventilation support (invasive or non-invasive), were hospitalized in an intensive care unit, or were administered vasopressor medications (noradrenaline and vasopressin) or inotropic medications (dopamine, dobutamine, milrinone and adrenaline).

Collected Data. Demographic information such as age, sex, ethnic group (Jewish or Arabs, which included Druze and Muslims), weight, body mass index (BMI), length of hospitalization and mortality rates were collected. In addition, comorbidities, vital signs including fever, respiratory variables (breaths count per minutes, oxygen saturation) blood pressure and tests results such as metabolic profiles, complete blood count and coagulation tests were collected. Comorbidities were defined by ICD-9 codes as detailed in supplementary Table S1. A thorough analysis (see "Statistical Analysis" Section) of comorbidities, demographics and mortality rate was performed to characterise predispositions and the severity and case fatality of each disease. Moreover, lab tests and vital signs were screened at admission and for the first two days of hospitalization in order to identify distinct signature or putative biomarkers of COVID-19, influenza and SARI.

Statistical Analysis. Demographic variables, comorbidity rate, vital signs and lab tests were compared between disease groups at admission using the Chi-squared test or Fisher's exact test for categorical variables, and analysis of variance or Kruskal-Wallis test for continuous variables. The p-values across all tests were corrected to control the false discovery rate (FDR) criterion (19). Mortality rates were compared before and after excluding patients at mild severity level. Medi-

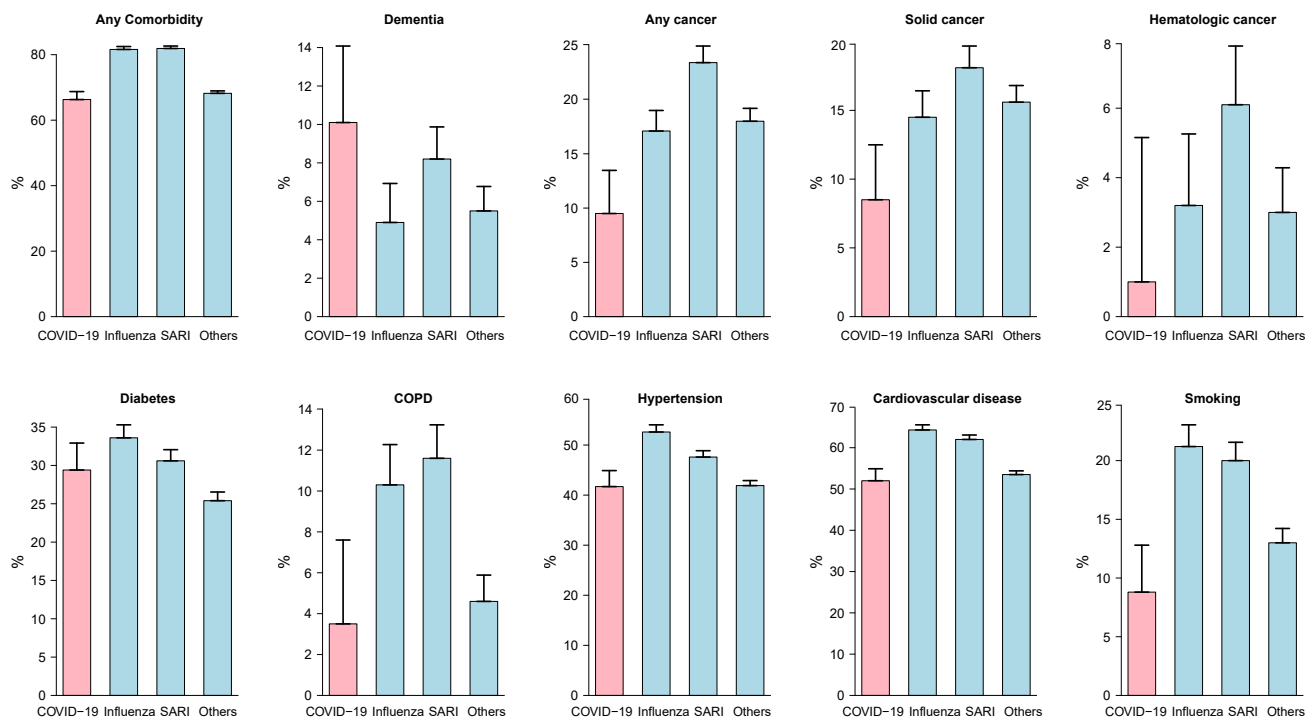


Fig. 2. Comorbidity prevalence rates among study patients at admission. Moderate to severe cases were considered for COVID-19 patients. For all disease types but dementia, rates were lower among COVID-19 patients compared to other patients. The differences between disease groups were all statistically significant except for diabetes.

ans and inter-quartile range (IQR) were used to describe the continuous variables. In addition, standardized scores were calculated for scale unification across variables, using the median for centralization and the median absolute deviation (MAD) for rescaling, thereby allowing their representation in a comparative heatmap. Adjustments for confounders were performed using generalized linear models. Age-adjusted COVID-19 odds ratios for each comorbidity were calculated using multivariate logistic regression, excluding mild cases, to eliminate severity bias.

The trajectory over time was compared for each numeric measure, using a non-parametric repeated measure model for a factorial design (20). In the first stage, for each measure, we used the interaction effect in the model to test for difference in time trend between the disease groups. For variables that showed a significant effect, we conducted post-hoc pairwise tests between the groups. The p-values over all tests across the two stages were corrected using a hierarchical FDR controlling procedure (21). Three time intervals were defined to follow trends during hospitalization: 0-6, 6-24, and 24-48 hours from admission. Effect size was defined by the difference in slopes across time between each pair of compared disease groups. The larger slope difference among the slopes obtained for (0-6, 6-24) and (6-24, 24-48) time gaps was selected as the effect size for each pairwise comparison. The R software (22) was used for statistical analysis, including the R package nparLD (23) for applying the non-parametric model. A 0.05 threshold was used to determine significance.

Results

Database. A total of 9,670 hospitalizations at Rambam Health Care Campus met the initial inclusion criteria between October 1st, 2014 and October 1st, 2020 (Figure 1). Excluded were 33 non-critical COVID-19 cases admitted before April 1, 2020, a period during which all positive cases were systematically hospitalized, including very mild and asymptomatic cases, and 23 COVID-19 cases admitted for reasons unrelated to COVID-19 (e.g., women at labor, traffic accident injury). In order to remove bias and correlations due to repeated per-patient hospitalizations 963 cases, mainly non-COVID-19 hospitalization, with fewer than 30 days between consecutive hospitalization, were excluded. The remaining 8,651 cases were classified into the four disease groups. This included 693 COVID-19 patients, of whom 127 (18.3%) were classified as critical. A total of 68 variables were evaluated: demographics (7), vital signs (8), lab tests (38) and comorbidities (15).

Demographics. As shown in Table 1, COVID-19 patients (median age 59.8 ± 29.7 IQR *years*) were younger compared to influenza patients (median age 70.5 ± 21.8 IQR *years*) and SARI patients (median age 70.5 ± 22.9 IQR *years*). Patients between 18 and 44 years of age made up 25% of the COVID-19, compared to 13%-14% among influenza and SARI patients. In contrast 24% of the COVID-19 patients were 75 years or older, compared to 40% among influenza and SARI patients. The sex distribution among COVID-19 patients reflected a small preference towards

Table 1. Patient characteristics, length of stay and mortality

		COVID-19 (n=693)	Influenza (n=1612)	SARI (n=2292)	others (n=4054)	FDR corrected p-value (group difference)
Age (years)	median (IQR)	59,8 (29,7)	70,5 (21,8)	70,5 (22,9)	66,3 (36,9)	2,04E-46
Age group	18-44	176 (25,4%)	225 (14,0%)	296 (12,9%)	1040 (25,7%)	8,24E-58
	45-54	101 (14,6%)	103 (6,4%)	168 (7,3%)	334 (8,2%)	
	55-64	126 (18,2%)	266 (16,5%)	329 (14,4%)	487 (12,0%)	
	65-74	124 (17,9%)	358 (22,2%)	546 (23,8%)	808 (19,9%)	
	75+	166 (24,0%)	660 (40,9%)	953 (41,6%)	1385 (34,2%)	
Gender	Male	361 (52,1%)	806 (50,0%)	1344 (58,6%)	1870 (46,1%)	1,43E-19
	Female	332 (47,9%)	806 (50,0%)	948 (41,4%)	2184 (53,9%)	
Ethnic group	Arab	273 (39,4%)	401 (24,9%)	539 (23,5%)	1000 (24,7%)	3,05E-16
	Jewish	420 (60,6%)	1210 (75,1%)	1753 (76,5%)	3052 (75,3%)	
Length of stay (days)	median (IQR)	4 (7)	5 (5)	5 (6)	6 (8)	1,17E-25
Weight (kg)	median (IQR)	80 (22)	75 (21)	72 (25)	75 (23,1)	9,16E-14
BMI (kg/m ²)	median (IQR)	28,7 (7,2)	27,8 (7,3)	26,6 (7,4)	27,5 (7,4)	7,26E-16
BMI group	<=20	20 (3,5%)	89 (8,0%)	175 (12,7%)	215 (7,0%)	1,83E-16
	20-25	140 (24,4%)	301 (27,1%)	451 (32,7%)	968 (31,6%)	
	25-30	211 (36,8%)	382 (34,4%)	418 (30,3%)	1036 (33,8%)	
	30<	202 (35,3%)	339 (30,5%)	334 (24,2%)	845 (27,6%)	
Death (in hospital)	overall	50 (8,0%)	131 (8,1%)	308 (13,5%)	331 (8,6%)	3,21E-10
Death by age	18-44	0 (0%)	4 (1,8%)	17 (5,7%)	19 (2%)	5,09E-04
	45-54	1 (1,1%)	4 (3,9%)	12 (7,1%)	13 (4,1%)	
	55-64	2 (1,7%)	11 (4,1%)	33 (10,1%)	37 (8,1%)	
	65-74	17 (15,5%)	28 (7,8%)	59 (10,8%)	77 (10%)	
	75+	30 (21,4%)	84 (12,7%)	187 (19,6%)	185 (13,9%)	
Death by BMI	<=20	1 (5,3%)	3 (3,4%)	20 (11,5%)	24 (11,7%)	9,39E-02
	20-25	12 (9,2%)	17 (5,6%)	50 (11,1%)	61 (6,7%)	
	25-30	7 (3,6%)	20 (5,2%)	30 (7,2%)	54 (5,5%)	
	30<	9 (5,2%)	14 (4,1%)	24 (7,2%)	27 (3,4%)	

Table 2. Comorbidities prevalence and age-adjusted odds ratios among study patients at admission and comparison between disease groups.

	COVID-19 * (n=398)	Influenza (n=1612)	SARI (n=2292)	Others (n=4054)	age-adjusted odds ratio (95%CI) (COVID-19 vs. influenza/SARI)	FDR-corrected p-value (odds ratio)
Any comorbidity	264 (66,3%)	1316 (81,6%)	1877 (81,9%)	2766 (68,2%)	0,32 (0,24;0,44)	8,32E-12
Smoking	35 (8,8%)	341 (21,2%)	458 (20,0%)	529 (13,0%)	0,32 (0,22;0,48)	2,05E-07
Cardiovascular disease	207 (52,0%)	1037 (64,3%)	1420 (62,0%)	2169 (53,5%)	0,46 (0,34;0,61)	9,26E-07
Any cancer	38 (9,5%)	276 (17,1%)	536 (23,4%)	731 (18,0%)	0,4 (0,27;0,58)	1,11E-05
Chronic obstructive pulmonary disease (COPD)	14 (3,5%)	166 (10,3%)	267 (11,6%)	185 (4,6%)	0,29 (0,16;0,53)	0,0002
Dementia	40 (10,1%)	79 (4,9%)	188 (8,2%)	224 (5,5%)	2,82 (1,67;4,76)	0,0003
Solid cancer	34 (8,5%)	234 (14,5%)	415 (18,1%)	631 (15,6%)	0,5 (0,33;0,75)	0,0019
Hematologic cancer	4 (1,0%)	51 (3,2%)	140 (6,1%)	123 (3,0%)	0,19 (0,07;0,53)	0,0028
Hypertension	166 (41,7%)	848 (52,6%)	1091 (47,6%)	1699 (41,9%)	0,66 (0,5;0,87)	0,0064
Ischemic heart disease	57 (14,3%)	358 (22,2%)	452 (19,7%)	664 (16,4%)	0,69 (0,49;0,97)	0,0583
Asthma and bronchiectasis	14 (3,5%)	114 (7,1%)	110 (4,8%)	114 (2,8%)	0,54 (0,28;1,03)	0,0963
Diabetes	117 (29,4%)	542 (33,6%)	701 (30,6%)	1031 (25,4%)	0,78 (0,59;1,03)	0,1159
Stroke	30 (7,5%)	152 (9,4%)	244 (10,6%)	505 (12,5%)	0,7 (0,42;1,16)	0,2162
Hyperlipidemia	146 (36,7%)	671 (41,6%)	868 (37,9%)	1305 (32,2%)	0,87 (0,67;1,14)	0,3333
Osteoarthritis	6 (1,5%)	27 (1,7%)	19 (0,8%)	77 (1,9%)	0,46 (0,1;2,02)	0,3333
Rheumatoid arthritis	2 (0,5%)	29 (1,8%)	35 (1,5%)	41 (1,0%)	0,34 (0,04;2,61)	0,3333
Chronic kidney disease (CKD)	51 (12,8%)	256 (15,9%)	281 (12,3%)	464 (11,4%)	0,92 (0,63;1,34)	0,6721

* excluding mild severity cases

males (52%), compared to a more significant preference towards males among SARI patients (58,6%), and no preference among influenza patients (50%). The proportion of Arabs among the COVID-19 patients (40%) was larger compared to influenza and SARI patients (25% and 23,5%, respectively), independently of disease severity. Duration of hospitalization was shorter for COVID-19 patients (median

4 ± 7 IQR days) compared to influenza and SARI patients (respectively median 5 ± 5 IQR and median 5 ± 6 IQR days). However, for moderate to severe COVID-19 patients, a longer duration of hospitalization was observed (median 6 ± 7,75 IQR days) as compared to influenza and SARI.

BMI was higher for COVID-19 patients (median 28,7 ± IQR 7,2 kg/m²) compared to influenza (median 27,8 ± IQR

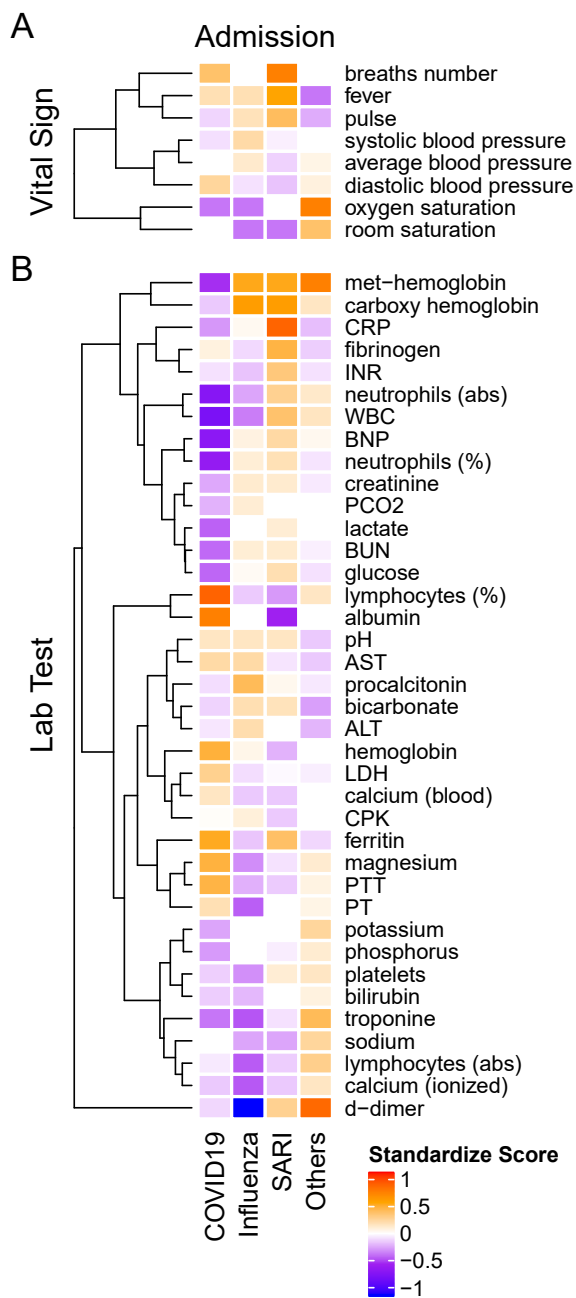


Fig. 3. Heatmap of admission median standardized scores of (A) vital signs and (B) lab tests in COVID-19, influenza A/B, SARI and Others. All variables are introduced on the same scale, relative to the variable overall median. The standardized scores is positive if the group median is greater than the overall median (orange-red) and negative otherwise (purple-blue). Hierarchical clustering on the left points to groups with similar pattern across diseases.

7,3 kg/m^2) and SARI (median 26,6 \pm 7,4 IQR kg/m^2), with 35% of the COVID-19 patients being obese (BMI>30 kg/m^2), compared to 30% of the influenza patients and 24% of the SARI patients. Moreover, 48% of moderate to severe COVID-19 patients under 65 years of age with no comorbidities were obese, compared to 26% of influenza patients and 14% of SARI patients. After adjustment for age, BMI among moderate to severe COVID-19 patients was found larger by 1,7 kg/m^2 compared to influenza patients, and by 2,9 kg/m^2 compared to SARI patients.

Overall in-hospital mortality was similar between COVID-19 (8%), influenza (8,1%) and other (8,6%) group, and markedly higher for the SARI group (13,5%). To limit the selection bias introduced by the current pandemic situation that would result in a more permissive hospitalization policy for the COVID-19 patients, we excluded mild COVID-19 cases. This analysis resulted in an in-hospital death rate of 12,6% for moderate to severe COVID-19 patients. When focusing on age groups 65-74 years and 75+ years, mortality rates of COVID-19 patients were 15,5% and 21,4%, respectively. Moreover, in-hospital mortality stratified by BMI showed that a lower proportion of patient with BMI over 30 kg/m^2 died compared to the group with BMI between 20 kg/m^2 and 25 kg/m^2 (5,2 % and 9,2%, respectively).

Comorbidities. As shown in Table 2 and depicted in Figure 2, the incidence rates for almost all analyzed comorbidities were lower among moderate to severe COVID-19 patients compared to other patients. A total of 9,5% of COVID-19 patients had cancer, compared to 17,1% of influenza patients and 23,4% of SARI patients. Accordingly, the age-adjusted odd ratio (AOR) for COVID-19 were 0,4 (95%CI: 0,27;0,59). Similar results were obtained when separating to solid-type cancer and hematologic cancer. In total, 3,5% of moderate to severe COVID-19 patients had chronic obstructive pulmonary disease (COPD), compared to 10%-11% of influenza and SARI patients and the AOR for COVID-19 was 0,29 (95%CI: 0,16;0,53). A total of 41,7% of COVID-19 patients had hypertension, compared to 52,6% of influenza patients and 47,6% of SARI patients, and the AOR for COVID-19 was 0,66 (95%CI: 0,5;0,87). A total of 52% of COVID-19 patients had cardiovascular disease, compared to 62%-64% of influenza and SARI patients. The AOR for COVID-19 was 0,46 (95%CI: 0,34;0,61). A total of 8,8% of COVID-19 patients smoked, compared to 20%-21% of influenza and SARI patients. The AOR for COVID-19 was 0,32 (95%CI: 0,22;0,48). Only dementia was more frequent among COVID-19 compared to other patients. A total of 10,1% of COVID-19 patients had dementia, compared to 4,9% of influenza patients and 8,2% of SARI patients. The AOR for COVID-19 was 2,82 (95%CI: 1,67;4,76). However, an interaction effect between dementia and arrival from nursing home was observed (p-value=0,0047). Stratified AOR led to nearly significant levels due to smaller sample size. COVID-19 patients hospitalized from nursing homes depicted an AOR of 1,82 (p-value=0,058), while the AOR for COVID-19 patients not coming from nursing homes was 0,54 (p-value=0,079).

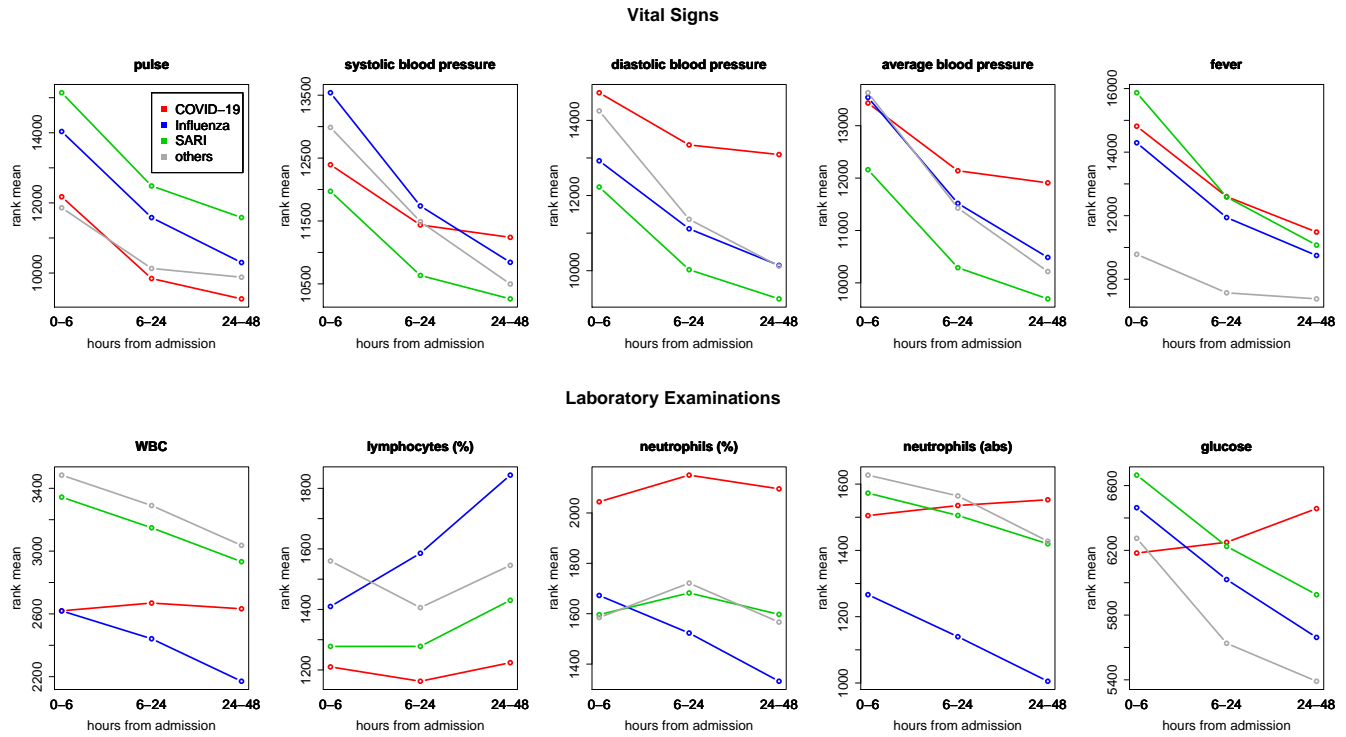


Fig. 4. Comparing trends across time – ranks means vs. time intervals. Blood pressure and pulse were decreasing more slowly during 6-48 hours after admission among COVID-19 patients compared to influenza and SARI patients. Glucose and measures related to white blood cells (white blood count, lymphocytes and neutrophils) among COVID-19 patients showed distinct trajectories, with respect to other patients.

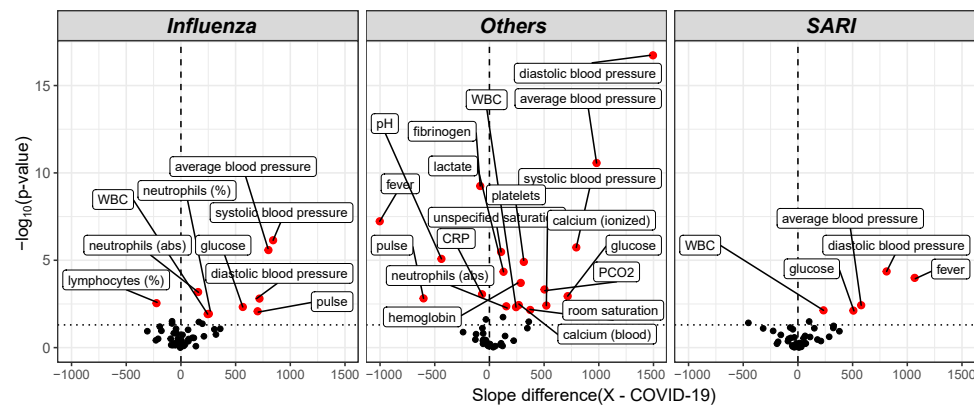


Fig. 5. Volcano plot of pairwise post-hoc analysis of patients trajectory of COVID-19, influenza, SARI and others for each lab tests. The level of significance is shown vs. the effect size, namely the slope difference (x - COVID-19). The most highly significant result was for average blood pressure, as seen at the left window, which refers to all influenza-COVID-19 comparisons, and at the right window, which refers to all SARI-COVID-19 comparisons. Trends for WBC, glucose and diastolic blood pressure for COVID-19 patients were found to be different from both influenza and SARI.

Lastly, diabetes was an important risk factor for COVID-19 severity, with a prevalence of nearly 30% of COVID-19 cases. Influenza and SARI depicted a similar prevalence suggesting diabetes as a common comorbidity of ILIs.

Admission results. Table 3 and Table 4 present results of the intercohort comparison of vital signs and laboratory examinations at admission. The median standardized scores (see Methods) for each group are presented per variable within the heatmap in Figure 3.

Vital signs at admission. The median standardized score (Figure 3A) of the heart rate (pulse) among COVID-19 patients (median 88 ± 23 IQR *bpm*) was substantially lower compared to influenza (median 93 ± 28 IQR *bpm*) and SARI (median 97 ± 29 IQR *bpm*) patients. Systolic blood pressure was lower among COVID-19 patients (median 128 ± 27 *mmHg*) compared to influenza patients (median 135 ± 37 *mmHg*), while diastolic blood pressure was higher among COVID-19 patients (median 77 ± 14 *mmHg*) compared to influenza (median 73 ± 19 *mmHg*) and SARI patients (median 72 ± 17 *mmHg*). The standardized scores (in Figure 3) showed that among the vital signs, blood pressure parameters

(systolic, diastolic and average) were regrouped as a single cluster. Similarly, saturation parameters (oxygen and room) formed a single group. A third group included pulse, fever and breath number. However, neither respiratory measures nor saturation or temperature showed clinically relevant median differences between ILIs.

Lab tests at admission. Laboratory examinations are presented in Table 4 and in Figure 3B. Lymphocytes percentage among COVID-19 patients (median $19,9 \pm 15,5$ IQR %) was substantially higher compared to influenza patients (median $11,5 \pm 10,9$ IQR %) and SARI patients (median $10,4 \pm 11$ IQR %). Similarly, albumin levels were higher among COVID-19 patients (median $3,8 \pm 0,6$ IQR *g/dL*) compared to influenza patients (median $3,4 \pm 0,8$ IQR *g/dL*) and SARI patients (median $3,1 \pm 0,8$ IQR *g/dL*). The standardized scores showed that among the lab test results, magnesium, prothrombin time (PT), partial thromboplastin time (PTT), hemoglobin, lactic dehydrogenase (LDH) and calcium, as well as of lymphocytes percentage, were regrouped as a single cluster that indicated higher levels among COVID-19 patients as compared to influenza and SARI. Conversely, neutrophils (abs), White blood count (WBC), brain natriuretic peptide (BNP) and neutrophils percentage formed a single cluster that indicated substantially lower levels in COVID-19 patients as compared to influenza and SARI. A similar effect with reduced levels in COVID-19 patients as compared to influenza and SARI was shown for the cluster containing methemoglobin and carboxyhemoglobin, the cluster containing procalcitonin, bicarbonate, alanine aminotransferase (ALT), potassium and phosphorous, and the cluster containing creatinine, lactate, blood urea nitrogen (BUN), and glucose.

Disease trajectories. Trends over time of parameters that showed differences between patient groups, are presented in Table 5. The results for of all pairwise group comparisons are provided as supplementary Table S2. For each variable and compared pair, the table provides the time gap for which the stronger difference in rank means slopes was found, either (0-6, 6-24) or (6-24, 24-48), and the difference itself. Figure 4 represents the trends for each of the variables showing a significant effect on diseases trajectories. As shown by the trends in Figure 4, both systolic and diastolic blood pressures, as well as pulse, decreased more slowly during the 6-48 hours after admission among COVID-19 patients compared to influenza and SARI patients. The difference in slopes with respect to its significance level (p-value) are represented in the volcano plot in Figure 5. The left panel refers to all influenza-COVID-19 comparisons, and the right panel refers to all SARI-COVID-19 comparisons. COVID-19 patients depicted a slower decrease in fever during the 48 hours after admission, compared to SARI patients. A particularly distinctive behavior among COVID-19 patients was noted for variables relating to WBC, which slightly increased among COVID-19 patients during the 24 hours after admission, but declined in all other patients. COVID-19 patients, similarly to SARI patients, first showed a decrease, and then an increase in lymphocytes percentage during the first 48 hours

after admission, while influenza patients showed a persistent increase. Neutrophils percentage and count also showed a difference in trend across time between COVID-19 patients and influenza patients. In particular, COVID-19 patients showed a consistent increase in percentage, compared to the decrease observed in patients of other cohorts. Finally, glucose levels among COVID-19 patients were relatively stable during the first 24 hours after admission, and then increased, as opposed to all other groups, where a consistent decrease was observed during the 48 hours after admission.

Discussion

The relative virulence of COVID-19 versus influenza has been and is still debated. Therefore, our focus was to assess COVID-19 mortality and virulence compared to other ILIs. In-hospital death rates were investigated. While COVID-19 depicted a lower overall mortality, stratification by age showed an increased fraction of casualty among elderly persons consistent with other reports (24). Age has been associated with COVID-19 severity and mortality in plethora of studies (1, 2, 4–7, 9). The presented comorbidity analysis exposed striking differences between disease groups. COVID-19 patients depicted substantially fewer “overall comorbidities” than influenza or SARI patients (66.3% versus 81.6% and 81.9%). The difference remained after age adjustment and excluding mild severity, suggesting that COVID-19 patients required hospitalization more frequently even if they were healthier before their infection. Hypertension, cardiovascular disease and diabetes depicted a large prevalence in COVID-19, similarly to previous findings (3, 6, 25), and represented common risk factors for ILIs. However, only hypertension and cardiovascular disease showed a significantly lower prevalence in COVID-19 patients compared to other ILIs. Interestingly, cancer prevalence was lower among COVID-19 patients, although it remains unclear how different cancers and/or cancer therapies affect COVID-19 severity or SARS-CoV2 infectivity (26). A recent study suggested that the differential immune cell profiles of cancer patients treated with immunomodulatory agents, may impact the host response to the SARS-CoV2 diminish disease severity (27). The lower prevalence can also be explained by higher self COVID-19 risk perception among cancer patients that leads to higher adherence to isolation methods. Taken together, the present investigation demonstrates that COVID-19 hospitalized patients present a significantly lower amount of comorbidities and are younger. COVID-19 patients hospitalized with moderate to severe disease had a significantly higher mortality rate than hospitalized influenza patients. Overall, this suggests that the intrinsic virulence of COVID-19 is higher than influenza.

Our analysis of vital signs revealed that pulse, blood pressure and temperature (fever) were significantly different between ILIs at admission and showed different patterns in the two days post admission despite the small effect size on fever. An independent study on acute respiratory syndrome (10) comparing Influenza and COVID-19 patients (se-

Table 3. Vital Signs at admission.

		COVID-19	Influenza	SARI	Others	FDR-corrected p-value (group difference)
Pulse (<i>bpm</i>)	n	693	1612	2292	4047	5,28E-79
	median (IQR)	88 (23)	93 (28)	97 (29)	86 (25)	
Systolic blood pressure (<i>mmHg</i>)	n	692	1610	2288	4040	3,12E-14
	median (IQR)	128 (27)	135 (37)	129 (36,3)	130 (35)	
Diastolic blood pressure (<i>mmHg</i>)	n	693	1611	2291	4046	1,31E-21
	median (IQR)	77 (14)	73 (19)	72 (17)	75 (17)	
Average blood pressure (<i>mmHg</i>)	n	693	1612	2292	4047	4,80E-12
	median (IQR)	102,5 (18)	104,5 (24,5)	100,5 (24)	103,5 (24,3)	
Room saturation (%)	n	672	1572	2204	3880	2,88E-105
	median (IQR)	96 (4)	95 (6)	95 (6)	97 (3)	
Oxygen saturation (%)	n	319	1010	1475	2147	1,40E-59
	median (IQR)	95 (3)	95 (4)	96 (4)	98 (4)	
Fever ($^{\circ}C$)	n	689	1610	2291	4031	4,09E-127
	median (IQR)	37,1 (0,9)	37,1 (1,1)	37,3 (1,4)	36,8 (0,6)	
Breaths (<i>num/min</i>)	n	560	298	465	1333	1,85E-16
	median (IQR)	17 (5)	16 (6)	18 (8)	16 (6)	

vere) showed that partial pressure of oxygen in arterial blood (PaO_2) was remarkably low for COVID-19 patients compared to influenza. Hence, oxygen saturation, heartbeat, temperature, and others continuous measures (i.e. blood glucose, activity) may serve as informative parameters to be continuously monitored in COVID-19 patients. For example, such measurements could be used to anticipate hospitalization, at the point of care, or to predict potential readmission (28–35). Monitoring vital signs at the hospital is critical for following patient disease trajectory (36) and for guiding physicians on clinical interventions such as initiation of ventilation assistance or pharmaceutical treatment.

Obesity has been reported as a major risk factor for COVID-19 and type 2 diabetes. Furthermore, impaired metabolic health (i.e., dyslipidaemia and insulin resistance) is linked with a higher risk of COVID-19-associated pneumonia (37–39). The presented analysis showed that BMI was indeed significantly higher in COVID-19 patients with respect to SARI and Influenza, while diabetes prevalence was high but similar to other ILIs (~ 30%). The lower BMI group depicted a higher mortality as compared to obese patients. However, due to the high proportion of missing data on BMI among the patients that died and the relatively small sample size, the observed differences warrant further investigations. This obesity paradox has been reported elsewhere (40) and seems to be common between ILIs (41). Several hypothesis have been proposed to explain why obese patients are more affected by COVID-19 without an increased mortality (42). For instance, Adipocytes contains the ACE2 receptor that enable the entrance of the COVID-19 virus, which turns adipose tissue into a potential target and viral reservoir (43). On the other side, Influenza infection relies on a different mechanism, through hemagglutinin onto sialic acid sugars on the surfaces of epithelial cells (44) which could explain a higher

severity of COVID-19 disease in overweight patients. Conversely, in obese patients, an increased circulating levels of adipokines and inflammatory cytokines such as $TNF\alpha$, IL-6, or C-Reactive Protein (CRP) was observed (45). This chronic low-grade inflammation may impair the adaptive immune responses to viral infections (46) and consequently reduce the probability of a lethal cytokine storm. However, it remains controversial for the COVID-19 disease and the underlying mechanisms remains unclear (47).

At the laboratory examination level, several metabolic intermediates and enzymes were significantly different between COVID-19, SARI, and influenza patients, particularly, lactate, LDH and glucose. Intriguingly, glucose levels in COVID-19 patients were lower at admission but took an opposite trajectory in the first two days of admission, compared to SARI and influenza. Impaired glucose homeostasis is associated with poor COVID-19 prognosis and has been hypothesized as an underlying trigger of the cytokine storm in COVID-19 patients (48–51). In severe cases of COVID-19, a hyperinflammatory response (cytokine storm) is correlated with poor outcome (52–54). Several studies reported an association between the neutrophils-to-lymphocyte ratio (NLR) and the severity of COVID-19 (55–57). Accordingly, our investigation of lab examination revealed that COVID-19 have a prominent effect on blood cell-types counts and proportions such as lymphocytes, neutrophils, WBCs at admission and along the first two days of hospitalization. The present analysis reveal that the trajectories of glucose and immune cells are affected by the clinical management of COVID-19 patients, probably through corticosteroid treatments (58).

Ferritin is a key player of immune dysregulation through its immune-suppressive and pro-inflammatory effects, supporting the possibility of cytokine storm (59, 60). We observed that ferritin levels were more elevated among COVID-19 pa-

Table 4. Laboratory examination at admission.

		COVID-19	Influenza	SARI	Others	FDR corrected p-value (group difference)
White blood count (WBC) ($\cdot 10^3/\mu L$)	n	657	1600	2262	3960	5,81E-153
	median (IQR)	6,5 (3,6)	8,2 (5,2)	11,3 (8,2)	10,4 (6)	
Platelets ($\cdot 10^3/\mu L$)	n	656	1589	2273	3969	1,15E-34
	median (IQR)	200 (100)	187 (97)	218 (131)	221 (112)	
Hemoglobin (g/dL)	n	657	1604	2290	3986	2,34E-34
	median (IQR)	13,2 (2,4)	12,4 (2,8)	11,9 (3)	12,3 (2,8)	
Lymphocytes (%)	n	633	1587	2250	3637	1,53E-74
	median (IQR)	19,9 (15,5)	11,5 (10,9)	10,4 (11)	13,9 (13,2)	
Lymphocytes (abs) ($\cdot 10^3/\mu L$)	n	633	1557	2166	3603	9,54E-86
	median (IQR)	1,2 (0,9)	0,9 (0,8)	1,1 (0,9)	1,4 (1,1)	
Neutrophils (%)	n	633	1589	2280	3688	8,44E-27
	median (IQR)	69,6 (18,2)	77,5 (15,1)	78,4 (15,3)	75,6 (16,9)	
Neutrophils (abs) ($\cdot 10^3/\mu L$)	n	633	1558	2182	3639	9,56E-78
	median (IQR)	4,4 (3,1)	6,1 (4,4)	8 (6,2)	7,5 (5,4)	
Creatinine (mg/dL)	n	658	1593	2284	3698	6,62E-08
	median (IQR)	0,9 (0,4)	1 (0,6)	1 (0,7)	0,9 (0,6)	
Blood urea nitrogen (BUN) (mg/dL)	n	658	1592	2280	3686	6,37E-25
	median (IQR)	14,2 (10,3)	18,9 (14)	19 (16,6)	17,5 (14,8)	
Potassium (mEq/L)	n	658	1591	2274	3749	9,67E-13
	median (IQR)	3,9 (0,6)	4 (0,6)	4 (0,7)	4,1 (0,6)	
Sodium (mEq/L)	n	660	1594	2269	3742	1,36E-29
	median (IQR)	136 (5)	135 (5)	135 (6)	137 (5)	
D-dimer (mg/L)	n	462	83	107	178	2,20E-20
	median (IQR)	701,5 (751,8)	3,9 (827,2)	929 (1767)	1268,5 (1500,8)	
Ferritin (ng/mL)	n	11	209	225	441	2,20E-05
	median (IQR)	377 (598)	212 (387)	343 (746)	224 (514)	
C-reactive protein (CRP) (mg/L)	n	622	685	904	2394	1,75919E-70
	median (IQR)	4,7 (10,4)	7,3 (16,1)	13,9 (19,2)	5,6 (12,7)	
Procalcitonin (ng/mL)	n	38	14	36	85	2,23E-01
	median (IQR)	0,4 (0,7)	0,7 (2,3)	0,5 (1,2)	0,4 (1,3)	
Troponine (ng/mL)	n	67	462	421	782	9,57E-26
	median (IQR)	14 (40,5)	12 (44,8)	21 (71)	33 (129,8)	
Brain natriuretic peptide (BNP) (pg/mL)	n	78	164	204	559	1,30E-06
	median (IQR)	446,9 (2851,9)	2323,4 (4753)	2700 (5891,9)	2232,1 (5991,5)	
Lactate dehydrogenase (LDH) (U/L)	n	451	431	550	1132	2,20E-04
	median (IQR)	258 (155,5)	226 (134)	232,5 (141,3)	230 (140,8)	
Aspartate aminotransferase (AST) (U/L)	n	622	1386	1812	3058	2,60E-14
	median (IQR)	31 (22)	31 (24)	27 (24)	26 (23)	
Alanine aminotransferase (ALT) (U/L)	n	473	1267	1520	2356	3,02E-17
	median (IQR)	22 (23)	26 (23)	23 (26)	20 (24)	

tients as compared to SARI or influenza patients at admission. However, here the ferritin test was performed only for a small number ($\sim 1,5\%$) of severe COVID-19 patients.

A non-neglectable risk of thrombosis or disseminated intravascular clot formation has been described for COVID-19 patients (53, 61). Histopathological studies in post-mortem lung tissue revealed pulmonary microthrombi in 57% of COVID-19 and 58% of SARS as compared to 24% of H1N1 influenza patients (62). However, the underlying mechanisms remain to be fully characterized. It has been hypothesized that the dysregulated immune responses orchestrated by inflammatory cytokines is involved. Interestingly, our analysis of laboratory tests at admission confirmed higher level of PT and PTT in COVID-19 patients while platelet levels did not show extreme values for COVID patients with respect to influenza or SARI patients. In addition, D-dimers depicted a much lower value in influenza compared to COVID-19 or

SARI patients. However, this observation might be biased due to the low number of tests made for influenza patients ($\sim 5\%$). As the risk due to thrombosis has been described early in the pandemic (63), D-dimer quantification is currently performed routinely for COVID-19 patients.

The diagnosis of dementia has been reported as an important risk factor for mortality in COVID-19 patients (64–66). The prevalence of demented patient found in the COVID-19 cohort ($\sim 10\%$) was lower than previous estimates, which vary from 13% to 42% (67). According to our analysis, dementia was found to be more prevalent among COVID-19 patients as compared to patients of the other cohorts. In order to determine if this finding can be explained by the higher proportion of COVID-19 patients arriving from nursing homes, the variable of nursing home residence was added to the model. A significant interaction between the nursing home residence variable and dementia in COVID-19 patients was observed.

Table 4.bis. Laboratory examination at admission.

		COVID-19		Influenza		SARI		Others		FDR corrected p-value (group difference)
International normalized ratio (INR)	n	523		993		1331		2336		1,23E-18
	median (IQR)	1,1 (0,1)		1 (0,2)		1,1 (0,2)		1,1 (0,2)		
Prothrombin time (PT) (sec.)	n	523		994		1331		2336		7,19E-33
	median (IQR)	12,9 (1,7)		11,9 (2,5)		12,6 (2,9)		12,7 (2,5)		
Partial thromboplastin time (PTT) (sec.)	n	522		987		1327		2319		3,46E-34
	median (IQR)	31,9 (4,8)		29,1 (6,6)		29,4 (6,2)		30,3 (6,2)		
Albumin (g/dL)	n	461		1302		1641		2752		4,09E-127
	median (IQR)	3,8 (0,6)		3,4 (0,8)		3,1 (0,8)		3,4 (0,8)		
Bilirubin (mg/dL)	n	632		1402		1834		3113		7,15E-16
	median (IQR)	0,5 (0,3)		0,5 (0,4)		0,5 (0,5)		0,5 (0,5)		
Creatine phosphokinase (CPK) (U/L)	n	491		394		490		1301		1,83E-04
	median (IQR)	85 (118,5)		90,5 (202)		73,5 (134,5)		84 (189)		
Glucose (mg/dL)	n	660		1596		2282		3785		1,36E-36
	median (IQR)	107 (43)		123 (63)		129 (70)		119 (61)		
Calcium (blood) (mg/dL)	n	636		1482		2061		3428		5,61E-11
	median (IQR)	8,8 (0,9)		8,6 (0,8)		8,6 (0,9)		8,7 (1)		
Calcium (ionized) (mg/dL)	n	566		1331		1920		3064		1,37E-86
	median (IQR)	1,2 (0,1)		1,1 (0,1)		1,2 (0,1)		1,2 (0,1)		
Magnesium (mg/dL)	n	498		1386		1896		2928		2,84E-44
	median (IQR)	2,1 (0,3)		1,9 (0,4)		1,9 (0,4)		2 (0,3)		
Phosphorus (mg/dL)	n	503		1387		1897		2947		5,85E-11
	median (IQR)	3,1 (1)		3,3 (1,2)		3,3 (1,2)		3,4 (1,2)		
Fibrinogen (mg/dL)	n	472		202		336		959		3,79E-18
	median (IQR)	413,5 (152)		391,6 (191,2)		459 (270,5)		388 (192)		
PCO2 (mmHg)	n	566		1333		1924		3066		4,07E-09
	median (IQR)	44 (11)		47 (14)		46 (14)		46 (14)		
Bicarbonate (mmol/L)	n	566		1331		1920		3059		2,04E-33
	median (IQR)	26,6 (4,3)		27,9 (6,2)		27,8 (6,3)		26 (6,3)		
pH	n	566		1333		1924		3066		4,28E-30
	median (IQR)	7,4 (0,1)		7,4 (0,1)		7,4 (0,1)		7,4 (0,1)		
Lactate (mmol/L)	n	287		384		674		1256		2,09E-14
	median (IQR)	1,3 (0,9)		1,7 (1,5)		1,8 (1,8)		1,7 (2)		
MetHemoglobin (g/dL)	n	121		13		29		47		1,68E-04
	median (IQR)	0,5 (0,5)		1 (0,8)		1 (0,4)		1,1 (0,9)		
CarboxiHemoglobin (g/dL)	n	140		12		27		42		8,63E-05
	median (IQR)	1,4 (1)		1,9 (0,9)		1,9 (0,9)		1,6 (0,8)		

Table 5. Significant slope difference in time window in the first day or the second day of hospitalization.

variable	disease compared to COVID-19	time gap of max. difference	FDR corrected p-value
systolic blood pressure	influenza	(0-6)-(6-24)	4,30E-06
average blood pressure	influenza	(6-24)-(24-48)	5,22E-06
diastolic blood pressure	SARI	(0-6)-(6-24)	6,54E-05
fever	SARI	(0-6)-(6-24)	0,0001
diastolic blood pressure	influenza	(6-24)-(24-48)	0,0019
neutrophils (abs)	influenza	(0-6)-(6-24)	0,0040
average blood pressure	SARI	(0-6)-(6-24)	0,0056
lymphocytes (%)	influenza	(0-6)-(6-24)	0,0057
SAO ₂	SARI	(0-6)-(6-24)	0,0109
pulse	influenza	(6-24)-(24-48)	0,0124
glucose	influenza	(6-24)-(24-48)	0,0141
glucose	SARI	(6-24)-(24-48)	0,0152
WBC	SARI	(6-24)-(24-48)	0,0220
neutrophils (%)	influenza	(0-6)-(6-24)	0,0232
WBC	influenza	(0-6)-(6-24)	0,0242

The results can be potentially explained by a higher exposure and infection risk of demented nursing home residents caused by a lower ability to adhere to the needed isolation behaviors (68). COVID-19 exposure in nursing home has been reported by others and is a common issue in several countries (24, 69). More than 20% of all reported COVID-19-associated deaths occurring in nursing homes in countries such as Canada, Sweden and the UK. For instance, nursing home population depicted a 1.70-fold higher infection attack rate than the general population in France (24, 69). Thus, COVID-19 exposure in nursing home has been reported by others and is a common issue in several countries.

The above findings point to vital signs and lab results, as well as to comorbidities, that can be helpful in discriminating between COVID-19 and other ILI's at presentation. We plan to pursue a study to develop data-driven tools to efficiently identify COVID-19 cases and predict their disease trajectory at the point of care.

Haifa and the Northern district of Israel are a multicultural region that encompasses several ethnic groups, who have distinct cultural agendas and socio-economic characteristics. The data collected from the largest regional hospital provided were of value for assessment of differential COVID-19 manifestations and risk factors in various ethnic groups. A striking enrichment of all COVID-19 cases in Arab communities accounting for about 40% of COVID-19 cases was observed, as opposed to roughly 25% for the influenza and SARI cases, similar to the Arab proportion in the Haifa area. Higher exposure risk and infection rates of COVID-19 at Arab settlements may account for this effect as no differences in terms of severity between Arabs and Jews were observed. Further stratification of the Jewish population could not be performed for a more detailed analysis of the orthodox or secular fraction. However, it was previously reported that a similar effect is likely in the orthodox Jewish communities (70–72).

Other studies that compared COVID-19 to Influenza did not refer to associations between variables, which may be attributed to systematic activity, and to their clinical trajectory, and used limited cohorts of patients or focused only on acute respiratory distress syndrome, for instance (10, 11). Furthermore, they did not account for multiple testing of variables, which may lead to increased overall type I error (19). In this study, a comprehensive approach was applied to accommodate simultaneous testing of multiple biomarkers. Heterogeneity in distribution between variables was addressed by unifying their scale through robust standardization, thereby allowing comparison of their effects and detection of common patterns through clustering. Non-parametric repeated measures model was performed to allow for time-course analysis under various forms of non-symmetric, long-tailed distributions.

Study limitations. The present study has few important limitations. Firstly, this study is based on a single medical center. Secondly this analysis did not include important information such as symptoms, images (scans, x-rays), waveforms (e.g. electrocardiogram, oxygen measurements in blood, respiration, ventilation), omics data (e.g. genomics, epi-genomics, transcriptomics, lipidomics and metabolomics) and pharmacological interventions (apart from the severe cases definition). We decided not to include oxygen measurement because of the uncertainty as per whether the measurement was taken on an arterial or venous line. Thirdly, potential selection bias, information bias or non differential misclassification associated with the use of EMR data are existing in the presented dataset. Variables were collected from a unique EMR sources and using a single query tools. These EMR were curated similarly for each groups which allowed to observe clinically relevant significant differences. Differences in the prevalence of personal characteristics between the diseases among hospitalized patients can be related to differences in exposure risk, infection susceptibility, disease severity and admission to hospital policies and biases. To address the effect of selection bias related to differences in hospi-

talization admission policy of COVID-19 patients compared to the other diseases, asymptomatic and mild cases were excluded in part of the analysis. Asymptomatic and mild cases are usually not hospitalized in influenza and SARI groups unless combined with other risk factors (Berkson's bias)(73). Furthermore, some of the lab tests are not part of the routine work, hence selection bias by indication is likely. Not all patients within the SARI group were tested for Influenza, COVID-19 or other viruses, thus the SARI group potentially contains undetected Influenza cases, and less likely, COVID-19 cases, as the vast majority patients with Influenza or SARI in our cohort were diagnosed prior to COVID-19 emergence. Nevertheless, the SARI group is heterogeneous in diagnoses, while the Influenza group, which is the focus in this paper for comparison to the COVID-19 group, remains homogeneous and clearly defined. Similar potential misclassification of influenza cases within the "Others" group is expected to be negligible. This group contains cases with a negative COVID-19 test result, at a period starting at the emergence of COVID-19 in Israel, which was the end of the 2020 influenza season, and ending before the beginning of the next influenza season (74).

Conclusions. The intrinsic virulence of COVID-19 appears higher than influenza. Several critical functions, such as immune response, coagulation, heart and respiratory function and metabolism were markedly impacted by the COVID-19 disease, despite some similarities observed with influenza and SARI. Moreover, COVID-19 seems to differently affect specific segments of the population, potentially due to increased exposure in localized communities or in nursing homes.

ACKNOWLEDGEMENTS

This research is partially supported by The Milner Foundation, founded by Yuri Milner and his wife Julia. We are grateful to the Placide Nicod foundation for their financial support (J.S.). We acknowledge the financial support of the Technion Machine Learning Intelligent Systems center.

Bibliography

1. Shikha Garg. Hospitalization rates and characteristics of patients hospitalized with laboratory-confirmed coronavirus disease 2019—covid-net, 14 states, march 1–30, 2020. *MMWR. Morbidity and mortality weekly report*, 69, 2020.
2. Team CDC COVID and Response Team. Severe outcomes among patients with coronavirus disease 2019 (covid-19)—united states, february 12–march 16, 2020. *MMWR Morb Mortal Wkly Rep*, 69(12):343–346, 2020.
3. Jing Yang, Ya Zheng, Xi Gou, Ke Pu, Zhaofeng Chen, Qinghong Guo, Rui Ji, Haojia Wang, Yuping Wang, and Yongning Zhou. Prevalence of comorbidities and its effects in patients infected with sars-cov-2: a systematic review and meta-analysis. *International Journal of Infectious Diseases*, 94:91–95, 2020.
4. Chaolin Huang, Yeming Wang, Xingwang Li, Lili Ren, Jianping Zhao, Yi Hu, Li Zhang, Guohui Fan, Jiuyang Xu, Xiaoying Gu, Zhenshun Cheng, Ting Yu, Jiaan Xia, Yuan Wei, Wenjuan Wu, Xuelei Xie, Wen Yin, Hui Li, Min Liu, Yan Xiao, Hong Gao, Li Guo, Jungang Xie, Guangfa Wang, Rongmeng Jiang, Zhancheng Gao, Qi Jin, Jianwei Wang, and Bin Cao. Clinical features of patients infected with 2019 novel coronavirus in wuhan, china. *Lancet (London, England)*, 395:497–506, February 2020. ISSN 1474-547X. doi: 10.1016/S0140-6736(20)30183-5.
5. Yixuan Wang, Yuyi Wang, Yan Chen, and Qingsong Qin. Unique epidemiological and clinical features of the emerging 2019 novel coronavirus pneumonia (covid-19) implicate special control measures. *Journal of medical virology*, 92:568–576, June 2020. ISSN 1096-9071. doi: 10.1002/jmv.25748.
6. Luhuan Yang, Jinglan Liu, Rong Zhang, Mingwu Li, Zifeng Li, Xiaojing Zhou, Chuanjun Hu, Fei Tian, Fating Zhou, and Yunhong Lei. Epidemiological and clinical features of 200 hospitalized patients with corona virus disease 2019 outside wuhan, china: A descriptive study. *Journal of clinical virology : the official publication of the Pan American Society for Clinical Virology*, 129:104475, August 2020. ISSN 1873-5967. doi: 10.1016/j.jcv.2020.104475.

7. Na Zhu, Dingyu Zhang, Wenling Wang, Xingwang Li, Bo Yang, Jingdong Song, Xiang Zhao, Baoying Huang, Weifeng Shi, Roujian Lu, Peihua Niu, Faxian Zhan, Xuejun Ma, Dayan Wang, Wenbo Xu, Guizhen Wu, George F. Gao, Wenjie Tan, China Novel Coronavirus Investigating, and Research Team. A novel coronavirus from patients with pneumonia in china, 2019. *The New England journal of medicine*, 382:727–733, February 2020. ISSN 1533-4406. doi: 10.1056/NEJMoa2001017.
8. Juanjuan Zhao, Quan Yuan, Haiyan Wang, Wei Liu, Xuejiao Liao, Yingying Su, Xin Wang, Jing Yuan, Tingdong Li, Jinxin Li, Shen Qian, Congming Hong, Fuxiang Wang, Yingxia Liu, Zhaocun Wang, Qing He, Zhiyong Li, Bin He, Tianying Zhang, Yang Fu, Shengxiang Ge, Lei Liu, Jun Zhang, Ningshao Xia, and Zheng Zhang. Antibody responses to sars-cov-2 in patients of novel coronavirus disease 2019. *Clinical infectious diseases : an official publication of the Infectious Diseases Society of America*, March 2020. ISSN 1537-6591. doi: 10.1093/cid/ciaa344.
9. George N Ioannou, Emily Locke, Pamela Green, Kristin Berry, Ann M O'Hare, Javeed A Shah, Kristina Crothers, McKenna C Eastment, Jason A Dominitz, and Vincent S Fan. Risk factors for hospitalization, mechanical ventilation, or death among 10 131 us veterans with sars-cov-2 infection. *JAMA Network Open*, 3(9):e2022310–e2022310, 2020.
10. X Tang, R Du, R Wang, et al. Comparison of hospitalized patients with ards caused by covid-19 and h1n1 [manuscript published online ahead of print 26 march 2020]. *Chest*, 2020.
11. Souheil Zayet, Quentin Lepiller, Hajer Zahra, Pierre-Yves Royer, Lynda Toko, Vincent Gendrin, Timothée Klopfenstein, et al. Clinical features of covid-19 and influenza: a comparative study on nord franche-comte cluster. *Microbes and infection*, 2020.
12. Changxing Shen, Min Tan, Xiaolian Song, Guoliang Zhang, Jiren Liang, Hong Yu, and Changhui Wang. Comparative analysis of early-stage clinical features between covid-19 and influenza a h1n1 virus pneumonia. *Frontiers in Public Health*, 8:206, 2020.
13. Yang Mei, Samuel E Weinberg, Lihui Zhao, Adam Frink, Chao Qi, Amir Behdad, and Peng Ji. Risk stratification of hospitalized covid-19 patients through comparative studies of laboratory results with influenza. *EClinicalMedicine*, 26:100475, 2020.
14. Alistair EW Johnson, Tom J Pollard, Lu Shen, H Lehman Li-Wei, Mengling Feng, Mohammad Ghassemi, Benjamin Moody, Peter Szolovits, Leo Anthony Celi, and Roger G Mark. MIMIC-III, a freely accessible critical care database. *Scientific data*, 3(1):1–9, 2016.
15. Julia Fitzner, Saba Qasimieh, Anthony Wayne Mounts, Burma Alexander, Terry Besselaar, Sylvie Briand, Caroline Brown, Seth Clark, Erica Dueger, Diane Gross, et al. Revision of clinical case definitions: influenza-like illness and severe acute respiratory infection. *Bulletin of the World Health Organization*, 96(2):122, 2018.
16. David A Berlin, Roy M Gulick, and Fernando J Martinez. Severe covid-19. *New England Journal of Medicine*, 2020.
17. Management of persons with covid-19. <https://www.covid19treatmentguidelines.nih.gov/overview/management-of-covid-19>, 2020.
18. Clinical management of covid-19: interim guidance, 2020.
19. Yoav Benjamini and Yoel Hochberg. Controlling the false discovery rate: A practical and powerful approach to multiple testing. *Journal of the Royal Statistical Society. Series B (Methodological)*, 57(1):289–300, 1995. ISSN 00359246.
20. E Brunner, S Domhof, and F Langer. Nonparametric analysis of longitudinal data in factorial experiments john wiley & sons: New york, 2002.
21. Anat Reiner-Benaim, Daniel Yekutieli, Noah E Letwin, Gregory I Elmer, Norman H Lee, Neri Kafkafi, and Yoav Benjamini. Associating quantitative behavioral traits with gene expression in the brain: searching for diamonds in the hay. *Bioinformatics*, 23(17):2239–2246, 2007.
22. R Core Team et al. R: A language and environment for statistical computing. vienna, austria: R foundation for statistical computing. Available, 2013.
23. Kimihiro Noguchi, Yulia R Gel, Edgar Brunner, and Frank Konietzschke. nparld: an r software package for the nonparametric analysis of longitudinal data in factorial experiments. *Journal of Statistical Software*, 50(12), 2012.
24. Megan O'Driscoll, Gabriel Ribeiro Dos Santos, Lin Wang, Derek AT Cummings, Andrew S Azman, Juliette Paireau, Arnaud Fontanet, Simon Cauchemez, and Henrik Salje. Age-specific mortality and immunity patterns of sars-cov-2 infection in 45 countries. *medRxiv*, 2020.
25. Wei-jie Guan, Wen-hua Liang, Yi Zhao, Heng-rui Liang, Zi-sheng Chen, Yi-min Li, Xiao-qing Liu, Ru-chong Chen, Chun-li Tang, Tao Wang, et al. Comorbidity and its impact on 1590 patients with covid-19 in china: A nationwide analysis. *European Respiratory Journal*, 55(5), 2020.
26. Lennard YW Lee, Jean-Baptiste Cazier, Thomas Starkey, Sarah EW Briggs, Roland Arnold, Vartika Bisht, Stephen Booth, Naomi A Campton, Vinton WT Cheng, Graham Collins, et al. Covid-19 prevalence and mortality in patients with cancer and the effect of primary tumour subtype and patient demographics: a prospective cohort study. *The Lancet Oncology*, 21(10):1309–1316, 2020.
27. Tal Goshen-Lago, Moran Szwarcwort-Cohen, Madeleine Benguigui, Ronit Almog, Ilit Turge-man, Nelly Zaltzman, Michael Halberthal, Yuval Shaked, and Irit Ben-Aharon. The potential role of immune alteration in the cancer–covid19 equation—a prospective longitudinal study. *Cancers*, 12(9):2421, 2020.
28. Joachim Behar, Chengyu Liu, Kevin Kotzen, Kenta Tsutsui, Valentina DA Corino, Janmay Singh, Marco AF Pimentel, Philip A Warrick, Sebastian Zaunseeder, Fernando Andreotti, et al. Remote health diagnosis and monitoring in the time of covid-19. *Physiological measurement*, 2020.
29. Dhruv R Seshadri, Evan V Davies, Ethan R Harlow, Jeffrey J Hsu, Shanina C Knighton, Timothy A Walker, James E Voos, and Colin K Drummond. Wearable sensors for covid-19: A call to action to harness our digital infrastructure for remote patient monitoring and virtual assessments. *Frontiers in Digital Health*, 2:8, 2020.
30. Chun Ka Wong, Deborah Tip Yin Ho, Anthony Raymond Tam, Mi Zhou, Yuk Ming LAU, Milky Oi Yan Tang, Raymond Cheuk Fung Tong, Kuldeep Singh Rajput, Gengbo Chen, Soon Chee Chan, Chung Wah SIU, and Ivan Fan Ngai Hung. Artificial intelligence mobile health platform for early detection of covid-19 in quarantine subjects using a wearable biosensor: protocol for a randomised controlled trial. *BMJ Open*, 10(7), 2020. ISSN 2044-6055. doi: 10.1136/bmjopen-2020-038555.
31. Jason Teo. Early detection of silent hypoxia in covid-19 pneumonia using smartphone pulse oximetry. *Journal of medical systems*, 44(8):1–2, 2020.
32. Frederic Michard, Kirk Shelley, and Erwan L'Her. Covid-19: Pulse oximeters in the spotlight, 2020.
33. Tejaswini Mishra, Meng Wang, Ahmed A Metwally, Gireesh K Bogu, Andrew W Brooks, Amir Bahmani, Arash Alavi, Alessandra Celli, Emily Higgs, Orit Dagan-Rosenfeld, et al. Early detection of covid-19 using a smartwatch. *medRxiv*, 2020.
34. Trisha Greenhalgh, Gerald Choon Huat Koh, and Jospic Car. Covid-19: a remote assessment in primary care. *bmj*, 368, 2020.
35. Sonia Shah, Kaushal Majmudar, Amy Stein, Nita Gupta, Spencer Suppes, Marina Karamanis, Joseph Capannari, Sanjay Sethi, and Christine Patte. Novel use of home pulse oximetry monitoring in covid-19 patients discharged from the emergency department identifies need for hospitalization. *Academic Emergency Medicine*, 27(8):681–692, 2020.
36. Stefan Möhlenkamp and Holger Thiele. Ventilation of covid-19 patients in intensive care units. *Herz*, page 1, 2020.
37. Naveed Sattar, Iain B McInnes, and John JV McMurray. Obesity a risk factor for severe covid-19 infection: multiple potential mechanisms. *Circulation*, 2020.
38. Cyrielle Caussey, François Pattou, Florent Wallet, Chantal Simon, Sarah Chalopin, Charlene Telliam, Daniel Mathieu, Fabien Subtil, Emilie Frobert, Maud Alligier, et al. Prevalence of obesity among adult inpatients with covid-19 in france. *The Lancet Diabetes & Endocrinology*, 8(7):562–564, 2020.
39. Elizabeth Williamson, Alex J Walker, Krishnan J Bhaskaran, Seb Bacon, Chris Bates, Caroline E Morton, Helen J Curtis, Amir Mehrkar, David Evans, Peter Inglesby, Jonathan Cockburn, Helen I Mcdonald, Brian MacKenna, Laurie Tomlinson, Ian J Douglas, Christopher T Rentsch, Rohini Mathur, Angel Wong, Richard Grieve, David Harrison, Harriet Forbes, Anna Schultze, Richard T Croker, John Parry, Frank Hester, Sam Harper, Rafael Perera, Stephen Evans, Liam Smeeth, and Ben Goldacre. Obesity as a factor associated with covid-19-related hospital death in the linked electronic health records of 17 million adult nhs patients. *medRxiv*, 2020. doi: 10.1101/2020.05.06.20092999.
40. Simona Biscarini, Marta Colaneri, Serena Ludovisi, Elena Seminari, Teresa C Pieri, Pietro Valsecchi, Ilaria Gallazzi, Emanuele Giusti, Calogero Cammà, Valentina Zuccaro, et al. The obesity paradox: Analysis from the smatteo covid-19 registry (smacore) cohort. *Nutrition, Metabolism and Cardiovascular Diseases*, 30(11):1920–1925, 2020.
41. Lorenzo Ball, Ary Serpa Neto, and Paolo Pelosi. Obesity and survival in critically ill patients with acute respiratory distress syndrome: a paradox within the paradox, 2017.
42. Norbert Stefan, Andreas L Birkenfeld, Matthias B Schulze, and David S Ludwig. Obesity and impaired metabolic health in patients with covid-19. *Nature Reviews Endocrinology*, pages 1–2, 2020.
43. Ilya L Kruglikov and Philipp E Scherer. The role of adipocytes and adipocyte-like cells in the severity of covid-19 infections. *Obesity*, 2020.
44. Ralf Wagner, Mikhail Matrosovich, and Hans-Dieter Klenk. Functional balance between haemagglutinin and neuraminidase in influenza virus infections. *Reviews in medical virology*, 12(3):159–166, 2002.
45. Caroline Richard, Michael Wadowski, Susan Goruk, Lisa Cameron, Arya M Sharma, and Catherine J Field. Individuals with obesity and type 2 diabetes have additional immune dysfunction compared with obese individuals who are metabolically healthy. *BMJ Open Diabetes Research and Care*, 5(1), 2017.
46. Sun-Young Ahn, Sung-Hwa Sohn, Sang-Yeon Lee, Hye-Lim Park, Yong-Wook Park, Hun Kim, and Jae-Hwan Nam. The effect of lipopolysaccharide-induced obesity and its chronic inflammation on influenza virus-related pathology. *Environmental toxicology and pharmacology*, 40(3):924–930, 2015.
47. Ricardo J. Jose and Ari Manuel. Does coronavirus disease 2019 disprove the obesity paradox in acute respiratory distress syndrome? *Obesity*, 28(6):1007–1007, 2020. doi: <https://doi.org/10.1002/oby.22835>.
48. Francesco Piarulli and Annunziata Lapolla. Covid 19 and low-glucose levels: Is there a link? *diabetes research and clinical practice*, 166, 2020.
49. Jiaoyue Zhang, Wen Kong, Pengfei Xia, Ying Xu, Li Li, Qin Li, Li Yang, Qi Wei, Hanyu Wang, Huiqing Li, et al. Impaired fasting glucose and diabetes are related to higher risks of complications and mortality among patients with coronavirus disease 2019. *Frontiers in endocrinology*, 11:525, 2020.
50. Awadhesh Kumar Singh and Ritu Singh. Does poor glucose control increase the severity and mortality in patients with diabetes and covid-19? *Diabetes & Metabolic Syndrome: Clinical Research & Reviews*, 2020.
51. Lihua Zhu, Zhi-Gang She, Xu Cheng, Juan-Juan Qin, Xiao-Jing Zhang, Jingjing Cai, Fang Lei, Haitao Wang, Jing Xie, Wenxin Wang, et al. Association of blood glucose control and outcomes in patients with covid-19 and pre-existing type 2 diabetes. *Cell metabolism*, 2020.
52. Puja Mehta, Daniel F McAuley, Michael Brown, Emilie Sanchez, Rachel S Tattersall, Jessica J Manson, HLH Across Speciality Collaboration, et al. Covid-19: consider cytokine storm syndromes and immunosuppression. *Lancet (London, England)*, 395(10229):1033, 2020.
53. Ricardo J Jose and Ari Manuel. Covid-19 cytokine storm: the interplay between inflammation and coagulation. *The Lancet Respiratory Medicine*, 2020.
54. Xinjuan Sun, Tianyuan Wang, Dayong Cai, Zhiwei Hu, Hui Liao, Liming Zhi, Hongxia Wei, Zhihong Zhang, Yuying Qiu, Jing Wang, et al. Cytokine storm intervention in the early stages of covid-19 pneumonia. *Cytokine & Growth Factor Reviews*, 2020.
55. Jingyuan Liu, Yao Liu, Pan Xiang, Lin Pu, Haofeng Xiong, Chuansheng Li, Ming Zhang, Jianbo Tan, Yanli Xu, Rui Song, et al. Neutrophil-to-lymphocyte ratio predicts critical illness patients with 2019 coronavirus disease in the early stage. *Journal of Translational Medicine*, 18:1–12, 2020.
56. Bicheng Zhang, Xiaoyang Zhou, Chengliang Zhu, Yuxiao Song, Fan Feng, Yanru Qiu, Jia Feng, Qingzhu Jia, Qibin Song, Bo Zhu, et al. Immune phenotyping based on the neutrophil-to-lymphocyte ratio and igg level predicts disease severity and outcome for patients with covid-19. *Frontiers in molecular biosciences*, 7:157, 2020.
57. Francisco Alejandro Lagunas-Rangel. Neutrophil-to-lymphocyte ratio and lymphocyte-to-c-reactive protein ratio in patients with severe coronavirus disease 2019 (covid-19): A meta-analysis. *Journal of medical virology*, 2020.

58. Awadhesh Kumar Singh, Sujoy Majumdar, Ritu Singh, and Anoop Misra. Role of corticosteroid in the management of covid-19: A systemic review and a clinician's perspective. *Diabetes & Metabolic Syndrome: Clinical Research & Reviews*, 14(5):971–978, 2020.
59. Manuel Vargas-Vargas and Christian Cortés-Rojo. Ferritin levels and covid-19. *Rev Panam Salud Publica*; 44, jun. 2020, 2020.
60. Jennifer Gómez-Pastora, Mitchell Weigand, James Kim, Xian Wu, Jacob Strayer, Andre F Palmer, Maciej Zborowski, Mark Yazer, and Jeffrey J Chalmers. Hyperferritinemia in critically ill covid-19 patients—is ferritin the product of inflammation or a pathogenic mediator? *Clinica Chimica Acta; International Journal of Clinical Chemistry*, 2020.
61. Toshiaki Iba, Jerrold H Levy, Marcel Levi, and Jecko Thachil. Coagulopathy in covid-19. *Journal of Thrombosis and Haemostasis*, 18(9):2103–2109, 2020.
62. Lida P Hariri, Crystal M North, Angela R Shih, Rebecca A Israel, Jason H Maley, Julian A Villalba, Vladimir Vinarsky, Jonah Rubin, Daniel A Okin, Alyssa Sclafani, et al. Lung histopathology in covid-19 as compared to sars and h1n1 influenza: A systematic review. *Chest*, 2020.
63. Jean M Connors and Jerrold H Levy. Covid-19 and its implications for thrombosis and anticoagulation. *Blood, The Journal of the American Society of Hematology*, 135(23):2033–2040, 2020.
64. Timotius Ivan Hariyanto, Cynthia Putri, Rocky Fransisca V Situmeang, and Andree Kurniawan. Dementia is a predictor for mortality outcome from coronavirus disease 2019 (covid-19) infection. *European Archives of Psychiatry and Clinical Neuroscience*, pages 1–3, 2020.
65. Satoshi Miyashita, Takayuki Yamada, Takahisa Mikami, Hirota Miyashita, Nitin Chopra, and Dahlia Rizk. Impact of dementia on clinical outcomes in elderly patients with coronavirus 2019 (covid-19): an experience in new york. *Geriatrics & Gerontology International*, 20(7):732, 2020.
66. Timotius Ivan Hariyanto, Cynthia Putri, Jessie Arisa, Rocky Fransisca V Situmeang, and Andree Kurniawan. Dementia and outcomes from coronavirus disease 2019 (covid-19) pneumonia: A systematic review and meta-analysis. *Archives of Gerontology and Geriatrics*, page 104299, 2020.
67. Angelo Bianchetti, R Rozzini, F Guerini, S Boffelli, P Ranieri, G Minelli, L Bianchetti, and M Trabucchi. Clinical presentation of covid19 in dementia patients. *The journal of nutrition, health & aging*, 24:560–562, 2020.
68. Alvin Keng, Eric E Brown, Aviva Rostas, Tarek K Rajji, Bruce G Pollock, Benoit H Mulsant, and Sanjeev Kumar. Effectively caring for individuals with behavioral and psychological symptoms of dementia during the covid-19 pandemic. *Frontiers in Psychiatry*, 11, 2020.
69. Gabriele Cipriani and Mario Di Fiorino. Access to care for dementia patients suffering from covid-19. *The American Journal of Geriatric Psychiatry*, 28(7):796–797, 2020.
70. Ami Schattner and Abraham Klepfish. Orthodox judaism as a risk factor of covid-19 in israel. *The American Journal of the Medical Sciences*, 360(3):304, 2020.
71. Ortal Slobodin and Odeya Cohen. A culturally-competent approach to emergency management: What lessons can we learn from the covid-19? *Psychological Trauma: Theory, Research, Practice, and Policy*, 12(5):470, 2020.
72. Daphna Birenbaum-Carmeli and Judith Chassida. Covid-19 in israel: socio-demographic characteristics of first wave morbidity in jewish and arab communities. *International Journal for Equity in Health*, 19(1):1–13, 2020.
73. Daniel Westreich. Berkson's bias, selection bias, and missing data. *Epidemiology (Cambridge, Mass.)*, 23(1):159, 2012.
74. Center for Disease Control. The national center for disease control, ministry of health, surveillance of influenza-like illness in israel – weekly update reports., 2020.