

Clinicians' ratings of the Health of the Nation Outcome Scales (HoNOS) show sensitivity/bias that may affect patients' progress: analyses of routine administrative data.

Jonathan Williams\*

- 5 \*Corresponding author  
Older Adult Mental Health Service  
Mid Central District Health Board  
Palmerston North Hospital  
50 Ruahine Street  
10 Palmerston North  
New Zealand

e-mail: [drjhw@live.co.uk](mailto:drjhw@live.co.uk)

previous addresses:

- 15 Far North Community Mental Health Team, Redan Road, Kaitaia,  
Mid-North Community Mental Health Team, Station Road, Kaikohe,  
Northland District Health Board, New Zealand

word count: 4188

## **ABSTRACT**

### **Objectives**

- 20 (1) To estimate clinician sensitivity/bias in rating the HoNOS. (2) To test if high or low clinician sensitivity determines slower resolution of patients' problems or earlier inpatient admission.

### **Design**

- 25 The primary analysis used many-facet Item Response Theory to construct a multi-level Graded Response Model that teased apart clinician sensitivity/bias from the severity of patients' problems in routine HoNOS records. Secondary analyses then tested if patients' outcomes depend on their clinicians' sensitivity/bias.

### **Outcome measures**

- 30 The outcome measures were (1) overall differences in sensitivity/bias between (a) individual clinicians and (b) different Community Mental Health Teams (CMHTs); (2) clinical outcomes, comprising (a) the rate of resolution of patients' problems and (b) the dependence of the time to inpatient admission on clinician sensitivity/bias.

### **Setting**

- 35 All archival electronic HoNOS records for all new referrals to all CMHTs providing mental health services in secondary care in a New Zealand District Health Board during 2007-2015.

### **Participants**

- 40 The initial sample comprised 2170 adults of working age who received 5459 HoNOS assessments from 186 clinicians. From these initial data, I derived an opportunistic, connected, bipartite, longitudinal network, in which (i) every patient received HoNOS ratings from 2 or more clinicians and (ii) every clinician assessed more than 5 patients. The bipartite network comprised 88 clinicians and 778 patients; 112 patients underwent later inpatient admission.

### **Results**

- 45 Sensitivity/bias differed importantly between individual clinicians and CMHTs. Patients whose clinicians had more extreme sensitivity/bias showed slower resolution of their problems and earlier inpatient admission.

### **Conclusions**

- 50 Raw HoNOS ratings reflect the sensitivity/bias of clinicians almost as much as the severity of patients' problems. Additionally, low or high clinician sensitivity can adversely affect patients' outcomes. Hence, the HoNOS's main value may be to measure clinician sensitivity. Accounting for clinician sensitivity could enable the HoNOS to fulfil its goal of improving mental health services.

[292 words, excluding 7 headings]

55 **Strengths and limitations of the study**

- 1) The study derived a connected network of clinicians and patients that approximates a rational design for estimating clinicians' sensitivity/bias.
- 2) The opportunistic network sample was atypical, with chronic patients and experienced clinicians – so the study may *under*-estimate clinician bias.
- 60 3) The study's statistical methods were appropriate to the ordinal nature of HoNOS ratings.
- 4) The study used earlier estimates of clinician sensitivity/bias to predict later outcomes – so that effects of clinician sensitivity/bias on outcomes may be causal
- 5) The study assumed that all HoNOS items tap a single dimension of the severity of  
65 patients' problems.

## INTRODUCTION

The Health of the Nation Outcome Scales (HoNOS) aims to allow clinicians to summarise clinical problems in individual patients and to develop infrastructure for improving the quality of mental health care[1]. Collecting the HoNOS is now  
70 mandatory in some countries; in the UK, HoNOS ratings support 'care clustering'  
which may determine 'Payment by Results' (PbR – now the National Tariff Payment System).[2] However, the value of the HoNOS is controversial[3] and its  
psychometric and operational properties remain uncertain.[3–5] One possible reason  
75 for this controversy and uncertainty is variation (bias) between clinicians.[6] Here, I  
assessed clinician bias and its effect on the validity of HoNOS ratings, in routine use.

Initial field trials of the HoNOS reported good inter-rater reliability[1,7]. However, Ecob and colleagues later showed important clinician bias.[6] No subsequent studies have heeded their conclusion that “investigations of HoNOS scores *must* take assessors into account” (italics in the original).[6] Ecob’s analyses assumed that raw  
80 HoNOS scores are cardinal (e.g. that ‘Severe’ is exactly twice as bad as ‘Mild’),  
which may have distorted their results.[8,9] Here, I use mathematical methods that are  
appropriate to the ordinal nature of HoNOS ratings.[9]

The use of raw HoNOS ratings to inform PbR assumes that that not only individual  
85 clinicians but also teams in different localities use the HoNOS equivalently. However,  
there can be important differences between the HoNOS scores of different institutions  
or teams.[5,10–12] Hence, individual clinicians’ sensitivity/bias in rating the HoNOS  
may could reflect their team culture. I tested this by comparing clinician bias between  
Community Mental Health Teams (CMHTs).

A recent review found no evidence that the HoNOS improves services[3] and its  
90 predictive validity is uncertain.[13–15] Poor predictive validity may result if patient  
outcomes show non-linear dependence on clinician sensitivity/bias. In principle, *both*  
low *and* high clinician sensitivity/bias may cause adverse patient outcomes, because  
(a) insensitive clinicians (who give low ratings) may not recognise patients’ problems  
and so leave them untreated, but (b) over-sensitive clinicians (who give high ratings)  
95 may over-treat and so cause further problems.[16] I tested this by looking for  
quadratic (U-shaped) dependence of the rate of resolution of patients’ problems and of  
time to inpatient admission on estimates of their clinicians’ sensitivity/bias.

## METHODS

### Sample

100 The initial sample comprised all electronic HoNOS records from a District Health  
Board’s Mental Health Services for the period 02/07/2007 – 13/05/2015. All records  
were anonymised, archival, routine administrative data. So, there was no need to  
obtain prior consent to their use or prior ethical approval for the study. There was no  
public or patient involvement in the initial design or implementation of the HoNOS  
105 and since the present study is statistical, I did not seek such involvement, here.

Preliminary data cleaning eliminated duplicate records or assessments that rated six or fewer of the 12 HoNOS items. I then excluded ratings for patients (a) aged under 18

110 or over 65 at first contact, or (b) whose first HoNOS assessment was not a new referral to a CMHT, or (b) that occurred at discharge (including “discharge to another part of the service”) or at admission to the inpatient unit. (Supplementary Figure S1).

#### Connected network sample

115 Estimating the biases of individual clinicians ideally requires a sample that comprises a connected network, with enough cross-linkage between clinicians and patients to allow information to flow freely.[17] Routine practice prevents cross-linkage, because clinicians usually rate the HoNOS only for patients whom they themselves assessed initially. However, clinicians sometimes rate each other’s patients, due to operational factors (e.g. if the primary clinician is on leave, etc.). I used this sporadic clinician-patient overlap to derive an opportunistic, connected bipartite network of patients and clinicians that had adequate cross-linkage (Supplementary Table S1 and Figure S2).

120 I estimated clinician bias using only HoNOS ratings from CMHTs. I selected only (i) patients who had at least two community HoNOS assessments by different CMHT clinicians; (ii) CMHT clinicians who rated at least 5 patients, of which (iii) they rated at least one patient in common with another clinician. I recursively eliminated patients and clinicians that failed criteria (i)-(iii), until a stable connected bipartite network  
125 formed. Finally, I added back to this sample any patients who received new referral or review ratings exclusively from the CMHT clinicians in the connected bipartite network (see Supplementary Figures S1-2).

#### Admission sample

130 I assessed the validity of estimates of clinician bias and bias-adjusted estimates of patient severity by testing if they predict time to admission. Therefore, after defining and analysing the connected network to estimate clinician bias, I re-linked the patients in that sample with dates of inpatient admissions that occurred subsequently.

#### Statistical analysis

All analyses used the open-source statistical programming language R [18]

135 Estimation of clinician bias and severity of patients’ problems

I analysed the contributions of clinicians’ bias and the severity of patients’ problems to HoNOS ratings via Item Response Theory[17,19,20]. The analysis used a multi-level cumulative link model (mlclm). The mlclm’s fixed effects were patients’ demographic characteristics (age, gender, ethnicity), follow-up time and principal  
140 diagnosis (psychosis, mania, depression, anxiety, drug/ethanol abuse, personality disorder or dementia). The mlclm’s random effects estimated the severity of each patients’ problems and the sensitivity of each clinician and each item for detecting patients’ problems. The mlclm also included random effects for the items’ abilities to discriminate different degrees of the severity of patients’ problems. Hence, the mlclm  
145 was a multilevel graded response model (GRM)[20,21] (Supplementary Table S2) with a logit link that partitioned the raw HoNOS ratings (see Supplementary Methods and[20]) to reflect the following structure:-

$$p(\text{Rating}_{ijk}) = \alpha_m + \beta X + \text{patient}_i + \text{patient}_{it} + \text{item}_j + \text{item}_{jt} + \delta \text{item}_j + \text{clinician}_k + \epsilon_{ijk}$$

Where  $\alpha_m$  are the ‘m’ thresholds between categories;  $\beta$  is the vector of coefficients for  
150 the  $X$  fixed effects, including follow-up time (which estimates differential test  
function for the demographic and diagnostic factors and follow-up); ‘t’ is follow-up  
time in each episode of care;  $\text{patient}_i$  is the random intercept for patient ‘i’ (the overall  
severity of the patient i’s problems at first assessment);  $\text{patient}_{it}$  is the random slope  
155 for patient ‘i’ over time ‘t’ (the rate of change of patient i’s problems over time);  $\text{item}_j$   
is the random intercept for item ‘j’ (the mid-point of the item characteristic curve) at  
the first assessment;  $\text{item}_{jt}$  is the random slope of ratings on item ‘j’ over follow-up  
time (change in the likelihood of item j’s endorsement over follow-up ‘t’);  $\delta_{\text{item}_j}$  is  
the discrimination coefficient  $\delta$  (the slope of the item characteristic curve) for each of  
160 the ‘j’ items[20,21];  $\text{clinician}_k$  is the random intercept (overall bias/sensitivity) for  
clinician ‘k’;  $\epsilon_{ijk}$  is error for each individual HoNOS rating. Estimation of the mlclm  
used Bayesian methods.[21,22] The mlclm estimated all the above effects  
simultaneously and so adjusted each effect for all of the others.

Partitioning HoNOS ratings into clinician bias and severity of patients’ problems  
I first tested if clinician bias determines mean HoNOS ratings and how well HoNOS  
165 ratings describe the severity of patients’ problems. These analyses used generalised  
additive modelling of location, shape and scale (gamlss), with the sinh-arcsinh  
distribution (see rationale, below). The first gamlss analysis regressed mean HoNOS  
ratings on the mlclm’s estimates of clinician sensitivity/bias; the second regressed the  
mlclm’s estimates of the initial severity of patients’ problems on mean initial HoNOS  
170 ratings. This analysis also computed the 2.5<sup>th</sup> and 95<sup>th</sup> centiles of the severity of  
problems for each category of HoNOS ratings.

Comparison of bias between individual clinicians and CMHTs  
I quantified clinician bias and variation between patients using the Median Odds Ratio  
(MOR).[23,24] I computed the bias for each CMHT as the mean of the mlclm’s  
175 random intercepts for each clinician in that CMHT. I also computed the mean severity  
of patients’ problems in each CMHT as the mean of mlclm’s random intercepts for  
patients receiving care from the CMHT. When clinicians’ or patients’ data contributed  
to more than one CMHT, I included them only in the CMHT to which they  
contributed most frequently. I combined the two smallest CMHTs into a single unit. I  
180 then compared the mean clinician sensitivity/bias and patient severities between  
CMHTs using Kruskal-Wallis (KW)  $\chi^2$  tests.

Assessment of predictive validity  
I assessed the abilities of the mlclm’s estimates of the initial severity of each patient’s  
185 problems and of each clinicians’ sensitivity/bias (see above) to predict patients’  
progress or time to inpatient admission (see Introduction). In particular, I tested if  
more extreme clinician sensitivity/bias predicted worse outcomes. So, I predicted that  
more extreme clinician sensitivity/bias would cause (a) more positive random slopes  
(i.e. slower resolution of patients’ problems), resulting in U-shaped dependence of  
random slopes on clinician bias; (b) earlier inpatient admission, resulting in *inverted-*  
190 U dependence of time to inpatient admission on bias. Therefore, I modelled the  
dependence of the outcomes on quadratic terms of clinician sensitivity/bias.

Analyses of change of the severity of problems used `gamlss`. [25] These models analysed all patients in the connected network, because the `mlc1m` extracted random slopes of rates of change for all patients.

195 Analyses of time to inpatient admission estimated the survival of community status. [26] These analyses included only patients who later underwent inpatient admission, because including all patients in the analysis can introduce bias (by assuming that all patients will eventually become inpatients [26,27]). I estimated both accelerated failure time (AFT) and Cox's proportional hazards (CPH) models.

200 Preliminary `gamlss` models that used the normal distribution fitted poorly – their residuals showed marked deviations from normality (both leptokurtosis and skewness). Such non-normality may occur in observational studies, as here, because unknown selection variables influence response distributions. [28] Empirically the `sinh-arcsinh` distribution (a flexible variant of the normal distribution, that can  
205 accommodate heavy-tailed combinations of mean, variance, skewness and kurtosis [29]) fitted the rate-of-change data well (Shapiro-Wilk normality test of residuals:  $W=0.999$ ,  $p=0.9$ ); the `gamlss` models used this distribution. AFT models used the Rayleigh distribution, since this may be optimal for distinguishing orthogonal components of a single measure (here, the separate roles of patients' problems and clinician sensitivity in determining admission times). [30]

210 The `gamlss` analyses regressed both the mean and variance of the rates of change on the initial severity of each patient's problems, clinician sensitivity, demographic and clinical variables. The survival models included only the `mlc1m`'s estimates of the severity of patients' problems and clinician sensitivity, because the sample was too  
215 small to include many covariates. The `gamlss` and survival analyses first tested if the initial severity of patients' problems and clinician bias could determine the outcomes. They then tested if quadratic terms for clinician bias improved the model fits. I compared different models using Nagelkerke  $R^2$  and likelihood ratio  $\chi^2$  (LR  $\chi^2$ ) tests.

220 The `mlc1m`'s estimates of clinician sensitivity/bias and patients' problems may be statistically orthogonal (see Supplementary Figures S5a-b). However, there is a risk of causal circularity if later estimates of clinician sensitivity predict earlier patient outcomes. I minimised this risk in three ways: (1) I tested if the sensitivity of *only* the initial clinician determined the subsequent rate of change of patients' problems. (2) Patients who underwent inpatient admission had earlier HoNOS assessments from 2  
225 or more CMHT clinicians. So, I tested the dependence of time to admission on the mean sensitivity of all pre-admission clinicians. (3) Survival analyses excluded admissions which occurred less than 1 month after the first HoNOS assessment, in order to ensure that the initial HoNOS assessment preceded the decision to admit.

## RESULTS

### 230 Sample

The clinicians in the connected network sample had rated more HoNOS records (median 27, IQR 17-52) than their unselected colleagues (median 16, IQR 3-45). The patients in the selected sample differed from the rest in three ways that may reflect the selection process: the selected patients received (1) more HoNOS assessments, (2)  
235 from more clinicians, (3) over a longer period of follow-up (Table 1). The connected

network sample also showed differences that did not relate to the selection process: its patients included lower a proportion of males and a higher proportion of non-Europeans, compared with the unselected patients (Table 1).

240 Table 1: the clinical characteristics of the unselected, connected and admission samples

Clinical measure	Sample:	unselected	Connected-mlclm	Admission sample
Age at 1 <sup>st</sup> contact		37 (26-48)	38 (27-48)	35 (25-47)
Gender (Female : Male)		1142 : 1028	449 : 329 <sup>a</sup>	46 : 66 <sup>b</sup>
Ethnicity (European : other)		1108 : 1062	262 : 516 <sup>a</sup>	50 : 62 <sup>b</sup>
Setting (CMHT : IPU : both)		1420 : 78 : 672	653 : 0 : 125 <sup>1</sup>	0 : 0 : 112
Number of assessments		2 (1-7)	4 (3-8) <sup>a</sup>	13 (9-18) <sup>b</sup>
Follow-up duration (years)		0.1 (0-2.2)	1.3 (0.5-3.4) <sup>a</sup>	2.18 (1.08-2.92) <sup>b</sup>
Total HoNOS scores		0.7 (0.4-1.1)	0.7 (0.4-2.0)	0.80 (0.63-1.02) <sup>b</sup>
Number of HoNOS raters		1 (1-3)	3 (2-4) <sup>a</sup>	6 (4-8) <sup>b</sup>

245 Values for age, number of assessments, follow-up, total HoNOS scores and number of HoNOS raters are medians and inter-quartile ranges (IQRs); values for gender, ethnicity and setting are counts. Key: a – differs from non-selected sample; b – differs from connected network sample; 1 – note that the mlclm analysis of the connected network sample used only HoNOS ratings that patients received in community settings. Abbreviations: CMHT = Community Mental Health Team; IPU = Inpatient Unit; mlclm multi-level cumulative link model.

### Partitioning raw HoNOS ratings into patient problems and clinician bias

250 The mlclm's predicted scores – including its random effects – fitted the progress of individual patients' mean HoNOS ratings adequately (Supplementary Figures S3-4).

255 Clinician bias accounted for two-fifths of the variance in mean HoNOS ratings both at initial assessment (38% – Figure 1a) and during follow-up (40%). The mlclm's estimates of initial severity of patient problems accounted for half of the variance of mean HoNOS ratings at initial assessment (51%) and during follow-up (56%) (Supplementary Figure S5a; see Figure 1b). So, together, the mlclm's estimates of clinician sensitivity and the severity of patients' problems accounted for almost all the variance in mean HoNOS ratings (89% initially; 96% during follow-up).

260 Initial HoNOS ratings accounted for about half the variance of the mlclm's estimates of the initial severity of patients' problems (47%; Figure 1b). In concrete terms, (a) in any given HoNOS category, the 95%CI of estimates of severity spans almost half their range (see Figure 1b); (b) a patient who receives 'none' ratings for all HoNOS items from an insensitive clinician and a second patient who receives 'mild' - to - 'moderate' ratings for all items from an over-sensitive clinician may both have average (50%) bias-adjusted levels of severity of their problems (see further description of clinician sensitivity/bias, below).  
265



Even though the mlclm's estimates of clinician sensitivity/bias and of the severity of patients' problems related strongly to total HoNOS scores, the estimates for clinicians and patients were effectively orthogonal (both Spearman's  $\rho < 0.05$ , both  $p > 0.3$ ). (See Supplementary Figures S6a-b).

## 270 **Reliability**

Differences between individual clinicians

There was important variation between clinicians (median odds ratio, MOR = 2.0, 95% Credible Interval = 1.6-2.6; Figure 2). In concrete terms, (a) on average for random pairs of clinicians, if the less sensitive rates 50% of 100 patients' problems as 'mild' and 50% as 'moderate' (1:1), then the more sensitive would rate 33% of the  
275 *same* patients' problems as 'mild' and 67% as 'moderate' (2:1); (b) the 95% CIs of lowest and highest tertiles of clinician sensitivity/bias did not overlap (Fig. 2); (c) the variation between clinicians was similar to that between patients at their initial assessment (MOR = 2.2, 95% CI = 1.7-2.8) (but it was less than differences between  
280 patients' rates of change (MOR = 2.7, 95% CI = 2.0-3.8) (Supplementary Figs S7a-b).

Differences between Community Mental Health Teams

Clinician bias differed substantially, but not quite significantly, between CMHTs (KW  $\chi^2 = 7.0$ , 3df,  $p=0.07$ ; Figure 3). After omitting a single outlier with very low sensitivity from Team 3 (see Figure 3), these differences were significant (KW  $\chi^2 =$   
285  $8.9$ , 3df,  $p=0.03$ ). The initial severity of patients' problems and their annual rates of change were both similar between CMHTs (initial severity: KW  $\chi^2 = 0.3$ , 3df,  $p=0.96$ ; annual change: KW  $\chi^2 = 4.4$ , 3df,  $p=0.22$ ; Supplementary Figures S8a-b).

## **Predictive validity**

Rate of change of severity of problems

290 Patients whose initial clinicians had more extreme sensitivity/bias showed slower resolution of their problems (Figure 4). Statistically, the rate of reduction of patients' problems showed U-shaped dependence on clinician bias (gamlss: LR  $\chi^2=4.31$ , 1df,  $p=0.038$ , 95%CI = 0.004 – 0.126; Figure 4). Also, patients with more severe initial problems improved faster (i.e. the mlclm's random slopes related inversely to its  
295 random intercepts:  $t = -9.7$ , 744df,  $p<0.001$ ; Supplementary Figure S8).

Time to admission

Among patients who underwent inpatient admission, the first admission occurred earlier in those whose pre-admission CMHT clinicians had more extreme sensitivity (Figure 5) (AFT: LR  $\chi^2 = 11.5$ , 1df,  $p=0.0007$ , 95%CI = -0.707 – -0.213; CPH: LR  $\chi^2$   
300 = 5.1, 1df,  $p=0.024$ ; see also Supplementary Figure S10).

## **DISCUSSION**

### **Principal findings**

Clinician bias importantly influences raw HoNOS scores in routine practice. In fact, (a) raw HoNOS scores provide almost as much insight into clinicians' sensitivity to  
305 their patients' problems as into the actual severity of those problems; (b) any given raw HoNOS rating can associate with almost half the range of the bias-adjusted severity of patients' problems. Importantly, this clinician sensitivity/bias may affect

310 patient progress and management. In particular, patients whose clinicians showed more extreme bias (low, or high sensitivity) had worse outcomes, with slower resolution of their problems and earlier inpatient admission.

### Strengths and weaknesses

The study's main strength is that it derived a connected network of patients and clinicians that approximated the rational design for assessment of clinician bias. Additionally, (1) the mlclm accounted for the ordinal nature of HoNOS ratings and so should outperform the linear analysis of the only comparable study.[6,8,9] (2) The mlclm relaxed the assumption (implicit in summing raw HoNOS ratings) that all HoNOS items contribute equally to estimating the severity of patient's problems. (3) The mlclm provided independent estimates of the severity of patients' problems and of clinician bias, that were effectively orthogonal. (4) The study used earlier clinician bias to predict later outcomes, so effects of bias on outcomes could be causal (but see below). (5) The study included an important objective outcome – time to admission.

The study's main weakness is that both the patients and clinicians in the connected network were atypical: the patients were more chronic and the clinicians had completed more HoNOS assessments than their unselected peers. However, these atypical features should *reduce* any bias in clinicians' HoNOS ratings. So, the study may *under-estimate* clinician bias and its effects in routine practice. Further weaknesses are: (1) The mlclm assumes that all HoNOS items tap a single underlying latent dimension of the "severity of patients' problems". This assumption conflicts with reports that the HoNOS has a multi-dimensional structure.[31,32] However, those findings are themselves inconsistent (e.g. compare [33–35]) and a bifactor analysis indicated that "HoNOS can be used as a unidimensional scale".[33] Further studies should test if the quadratic dependence of patient outcomes on clinician bias depends on this simplifying assumption. (2) Clinician sensitivity/bias in rating the HoNOS is only important if it reflects clinician factors that *cause* patient outcomes. [16,36,37] The fact that the study's measures of clinician sensitivity/bias preceded changes in outcomes allows the possibility of causality. However, the causal mechanisms are unclear, because most clinicians were Community Mental Health Nurses (CMHNs), who did not make diagnoses, prescribe medication or hold admission rights. Even so, CMHNs' opinions are often crucial in determining inpatient admissions and clinician sensitivity here strongly influenced time to inpatient admission. This supports the possibility that clinician sensitivity/bias can cause outcomes, but further work should test this possibility more rigorously.

The graded rating scale model (GRM) that I used here assumes, like total HoNOS scores, that there is a single dimension of the severity of patients' problems:[20] but GRM relaxes the additional assumption of total HoNOS scores that each item contributes identically to estimating overall severity. Ideally, the analysis should allow 'differential item function' (DIF) in relation to diagnostic category, because some HoNOS items tap the principal symptoms of some diagnostic categories (e.g. psychosis, depression and problems with ethanol or drugs). However, the numbers of patients in diagnostic categories in the present opportunistic sample may be too small to support accurate estimation of DIF (see[20]). Larger studies should adjust for DIF in HoNOS items and perhaps also in rater characteristics (e.g. experience).

### Comparison with previous reports

The present finding of important variation between clinicians converges with that of  
355 Ecob and colleagues[6] and with general evidence that raters often show important  
bias[17,38–40]. My results strongly reaffirm Ecob’s caveat that users of HoNOS  
ratings “*must*” take assessors into account.[6] Here, differences between individual  
clinicians almost equal those between the severities of individual patients’ problems,  
360 indicating that clinicians use the HoNOS in different ways.[41–43] In effect, raw  
HoNOS ratings measure clinicians’ opinions as much as their patients’ problems.

The present study bears little comparison with previous reports that did not adjust for  
clinician sensitivity/bias, because this adjustment extracts so much variance from raw  
HoNOS ratings. The present results indicate that only half the variance of raw  
HoNOS scores reflects the target signal – the severity of patient problems. Hence, the  
365 signal-to-noise ratios for analyses of raw HoNOS ratings in all previous reports may  
be approximately 1:1. Such low signal-to-noise may explain many discrepancies  
between those reports’ results (e.g. see Table 4 in[33]). However, adjustment for  
clinician sensitivity/bias, as here, may reduce unexplained ‘noise’ to 5-10% of  
HoNOS scores’ total variance, and so increase signal-to-noise ratios for estimates of  
370 patients’ problems to 5:1 – 10:1. Such strong signal should support much more robust  
reliability of HoNOS ratings, in many settings (see further, below).

Different CMHTs showed different levels of clinician bias. This is consistent with  
previous reports of variations between hospital and CMHT clinicians,[5] and at a  
broader level between hospitals and general practices.[11,44] Together, these results  
375 indicate that routine HoNOS ratings can detect important cultural differences in  
sensitivity/bias between providers – which may be helpful for planners and funders  
(see further, below).

The present findings that more extreme clinician sensitivity/bias related to worse  
patient outcomes are novel. Edbrooke-Childs and colleagues reported substantial  
380 variation in rates of treatment drop-out between individual clinicians,[41] but they did  
not relate this variation to the individual clinicians’ biases. Previous proposals that  
more extreme clinician sensitivity may determine adverse patient outcomes were  
qualitative.[16,36,45] The present findings provide a means to quantify the  
importance of these *a priori* principles.

### 385 Implications for clinicians and planners

#### Clinicians

The present results indicate that raw HoNOS ratings are unhelpful, clinically.  
However, since clinician sensitivity/bias accounts for almost half of the variance of  
raw HoNOS ratings, adjustment for this sensitivity could allow accurate estimation of  
390 the true severity of patients’ problems. Bias-adjusted HoNOS scores could even be  
accurate enough to provide meaningful insights when providing treatment and  
prognosis for individual patients (cf [46]).

#### Planners

395 The present and previous evidence[6] that clinician sensitivity/bias contaminates raw  
HoNOS ratings has major implications for planners. Raw HoNOS ratings are the basis  
of allocating cases in “care clustering”, which determines “Payment by Results”  
(PbR) in the UK. There is already concern that care clusters are inadequate to support  
PbR[47] and clinician bias may further impair care clustering. Although there have  
400 been calls for training to standardise the use of HoNOS,[48] there is little evidence  
that training is effective[38,49–52] (and reducing clinicians’ bias/sensitivity could  
reduce the utility of their HoNOS ratings – see below). Overall, therefore, the present  
results militate against using *raw* HoNOS ratings to inform PbR. In contrast, bias-  
adjusted HoNOS ratings may be reliable enough to support PbR. Additionally,  
405 adjustment for bias at the levels of both individual clinicians and whole teams would  
preclude possibilities that either cultural differences between providers or “gaming”  
could attract disproportionate funding.[53] Therefore, adjusting PbR to account for  
clinician sensitivity/bias may improve efficiency in mental health services.

### Further Research

410 (1) The present study establishes the principle that clinician sensitivity/bias may affect  
patient progress. However, the sample was unrepresentative and too small to establish  
levels of clinician sensitivity that yield optimal patient outcomes. Larger studies could  
address this crucial issue, by capitalising on natural variation in sensitivity between  
clinicians. (2) The present study analysed only effects of patient factors on HoNOS  
415 ratings. The present methods can readily generalise to include factors relating to  
service provision (e.g. type of treatment, profession of clinician), social settings (e.g.  
neighbourhood deprivation indices) and financial or legal outcomes (e.g. benefit use,  
criminal justice contacts). (3) Adjusting HoNOS scores for clinician bias should  
greatly improve the accuracy of estimating the severity of patients’ problems. Hence,  
420 analyses of bias-adjusted routine HoNOS ratings could assess therapeutic  
interventions in large-scale real-world practice, rather than restricting trials to small,  
unrepresentative, highly-selected samples[54,55]. Finally, (4), disentangling the  
contributions to HoNOS scores of the severity of patients’ problems and clinicians’  
biases could importantly improve clinical governance and leadership. Specifically, the  
425 present methods could help to develop (a) “control limits”,[56] to avoid unnecessary  
attention to random negative variation in provider performance;[56] (b) positive  
leadership[57], by defining and disseminating aspects of clinicians’ routine practice  
that improve patient outcomes. In summary, re-designing services to assess and  
account for clinician bias could finally justify the costs of routine HoNOS collection  
(cf [58]).

430 **Funding:** This research received no specific grant from any funding agency in the public, commercial or not-for-profit sectors.

**Competing interests:** none

**Author roles:** JHW was responsible for all aspects of the study: the concept, all data analysis and drafting the manuscript

435 **Data sharing statement:** The anonymized data, code to generate the statistical models and the models themselves are available at <https://doi.org/10.7910/DVN/NSSZT2>

**Acknowledgements:** I am grateful to Dr Murray Patton for allowing access to the data.

440 **Registration:** I did not pre-register the protocol for these analyses. However, they follow from previous work that I presented at the Royal Australia and New Zealand College of Psychiatrists Annual Congress and I outlined the idea for the present work to Dr Arran Culver at the New Zealand Ministry of Health in Wellington in February 2020.

- 1 Wing JK, Beevor AS, Curtis RH, *et al.* Health of the Nation Outcome Scales (HoNOS). Research and development. *Br J Psychiatry* 1998;**172**:11–8. doi:10.1192/bjp.172.1.11
- 2 NHS England » 2019/20 National Tariff Payment System. <https://www.england.nhs.uk/pay-syst/national-tariff/2019-20-payment-reform-proposals/> (accessed 18 Jun 2020).
- 3 Bender KG. The meagre outcomes of HoNOS. *Australas Psychiatry* 2020;**28**:206–9. doi:10.1177/1039856219875066
- 4 Twomey C, Prina AM, Baldwin DS, *et al.* Utility of the Health of the Nation Outcome Scales (HoNOS) in Predicting Mental Health Service Costs for Patients with Common Mental Health Problems: Historical Cohort Study. *PLoS ONE* 2016;**11**:e0167103. doi:10.1371/journal.pone.0167103
- 5 Luo W, Harvey R, Tran T, *et al.* Consistency of the Health of the Nation Outcome Scales (HoNOS) at inpatient-to-community transition. *BMJ Open* 2016;**6**:e010732. doi:10.1136/bmjopen-2015-010732
- 6 Ecob R, Croudace TJ, White IR, *et al.* Multilevel investigation of variation in HoNOS ratings by mental health professionals: a naturalistic study of consecutive referrals. *International Journal of Methods in Psychiatric Research* 2004;**13**:152–64. doi:10.1002/mpr.171
- 7 Amin S, Singh SP, Croudace T, *et al.* Evaluating the Health of the Nation Outcome Scales. Reliability and validity in a three-year follow-up of first-onset psychosis. *Br J Psychiatry* 1999;**174**:399–403. doi:10.1192/bjp.174.5.399
- 8 Bauer DJ, Sterba SK. Fitting Multilevel Models with Ordinal Outcomes: Performance of Alternative Specifications and Methods of Estimation. *Psychol Methods* 2011;**16**:373–90. doi:10.1037/a0025813
- 9 Liddell TM, Kruschke JK. Analyzing ordinal data with metric models: What could possibly go wrong? *Journal of Experimental Social Psychology* 2018;**79**:328–48. doi:10.1016/j.jesp.2018.08.009
- 10 Bauer E, Kleine-Budde K, Stegbauer C, *et al.* Structures and processes necessary for providing effective home treatment to severely mentally ill persons: a naturalistic study. *BMC Psychiatry* 2016;**16**:242. doi:10.1186/s12888-016-0945-z
- 11 Moran V, Jacobs R. Comparing the performance of English mental health providers in achieving patient outcomes. *Soc Sci Med* 2015;**140**:127–35. doi:10.1016/j.socscimed.2015.07.009
- 12 de Beurs E, Blankers M, Delespaul P, *et al.* Treatment results for severe psychiatric illness: which method is best suited to denote the outcome of mental health care? *BMC Psychiatry* 2018;**18**:225. doi:10.1186/s12888-018-1798-4

- 13 Kisely S, Campbell LA, Cartwright J, *et al.* Do the Health of the Nation Outcome Scales measure outcome? *Can J Psychiatry* 2010;**55**:431–9. doi:10.1177/070674371005500706
- 14 Fankhauser S, Hochstrasser B, Sievers M, *et al.* [Assessing Change of Depressive Symptoms and Severity of Depression in an Inpatient Setting : Performance of the HoNOS (Health of the Nation Outcome Scales)]. *Psychother Psychosom Med Psychol* 2017;**67**:391–400. doi:10.1055/s-0043-105482
- 15 Golay P, Basterrechea L, Conus P, *et al.* Internal and Predictive Validity of the French Health of the Nation Outcome Scales: Need for Future Directions. *PLoS ONE* 2016;**11**:e0160360. doi:10.1371/journal.pone.0160360
- 16 Fatovich DM. The inverted U curve and emergency medicine: Overdiagnosis and the law of unintended consequences. *Emerg Med Australas* 2016;**28**:480–2. doi:10.1111/1742-6723.12588
- 17 McManus IC, Thompson M, Mollon J. Assessment of examiner leniency and stringency ('hawk-dove effect') in the MRCP(UK) clinical examination (PACES) using multi-facet Rasch modelling. *BMC Med Educ* 2006;**6**:42. doi:10.1186/1472-6920-6-42
- 18 R Core Team. *R: A language and environment for statistical computing*. Vienna, Austria: : R Foundation for Statistical Computing <https://www.R-project.org/>
- 19 Tavakol M, Pinner G. Using the Many-Facet Rasch Model to analyse and evaluate the quality of objective structured clinical examination: a non-experimental cross-sectional design. *BMJ Open* 2019;**9**:e029208. doi:10.1136/bmjopen-2019-029208
- 20 Uto M, Ueno M. Empirical comparison of item response theory models with rater's parameters. *Heliyon* 2018;**4**:e00622. doi:10.1016/j.heliyon.2018.e00622
- 21 Bürkner P-C. Bayesian Item Response Modeling in R with brms and Stan. *arXiv:190509501 [stat]* Published Online First: 1 February 2020.<http://arxiv.org/abs/1905.09501> (accessed 17 Aug 2020).
- 22 Bürkner PC. brms: An R Package for Bayesian Multilevel Models Using Stan. *J Stat Soft* 2017;**80**. doi:10.18637/jss.v080.i01
- 23 Merlo J. Multilevel analytical approaches in social epidemiology: measures of health variation compared with traditional measures of association. *J Epidemiol Community Health* 2003;**57**:550–2. doi:10.1136/jech.57.8.550
- 24 Larsen K, Merlo J. Appropriate assessment of neighborhood effects on individual health: integrating random and fixed effects in multilevel logistic regression. *Am J Epidemiol* 2005;**161**:81–8. doi:10.1093/aje/kwi017

- 25 Stasinopoulos M, Rigby B, Voudouris V, *et al.* *gamlss: Generalised Additive Models for Location Scale and Shape*. 2019. <https://CRAN.R-project.org/package=gamlss> (accessed 25 May 2019).
- 26 Therneau TM. *A Package for Survival Analysis in R*. 2020. <https://CRAN.R-project.org/package=survival>
- 27 van Walraven C, McAlister FA. Competing risk bias was common in Kaplan-Meier risk estimates published in prominent medical journals. *J Clin Epidemiol* 2016;**69**:170-173.e8. doi:10.1016/j.jclinepi.2015.07.006
- 28 Azzalini A, Kim H-M, Kim H-J. Sample selection models for discrete and other non-Gaussian response variables. *Stat Methods Appl* 2019;**28**:27–56. doi:10.1007/s10260-018-0427-1
- 29 Jones MC, Pewsey A. Sinh-arcsinh distributions. *Biometrika* 2009;**96**:761–80. doi:10/1/sinhasinh.pdf
- 30 Rayleigh distribution. Wikipedia. 2020.[https://en.wikipedia.org/w/index.php?title=Rayleigh\\_distribution&oldid=977271427](https://en.wikipedia.org/w/index.php?title=Rayleigh_distribution&oldid=977271427) (accessed 16 Sep 2020).
- 31 Speak B, Muncer S. The structure and reliability of the Health of the Nation Outcome Scales. *Australas Psychiatry* 2015;**23**:66–8. doi:10.1177/1039856214563851
- 32 Muncer S, Bass M, Dawkin M. Mokken analysis of the Health of the Nation Outcome Scales in acute inpatient and community samples. *Australas Psychiatry* 2016;**24**:459–61. doi:10.1177/1039856216647254
- 33 Smith W, Vitoratou S, McCrone P, *et al.* Exploring the factor structure of the Health of the Nation Outcomes Scale (HoNOS) in a sample of patients with schizophrenia, schizotypal and delusional disorders. *Health Qual Life Outcomes* 2017;**15**:141. doi:10.1186/s12955-017-0701-1
- 34 Speak BL, Muncer SJ. Factorial structure of the Health of the Nation Outcome Scales: An ordinal confirmatory factor analysis using a national sample of clinician ratings in England. *Int J Ment Health Nurs* 2016;**25**:87–98. doi:10.1111/inm.12199
- 35 Muncer S, Speak B. Confirmatory factor analysis of a two scale model of the Health of the Nation Outcome Scales (HoNOS) across diagnostic categories. *Psychiatry Res* 2017;**247**:12–4. doi:10.1016/j.psychres.2016.11.010
- 36 Fatovich DM. The time paradox of emergency medicine: Another inverted U curve. *Emerg Med Australas* 2017;**29**:730–2. doi:10.1111/1742-6723.12847
- 37 Hernán MA. The C-Word: Scientific Euphemisms Do Not Improve Causal Inference From Observational Data. *Am J Public Health* 2018;**108**:616–9. doi:10.2105/AJPH.2018.304337



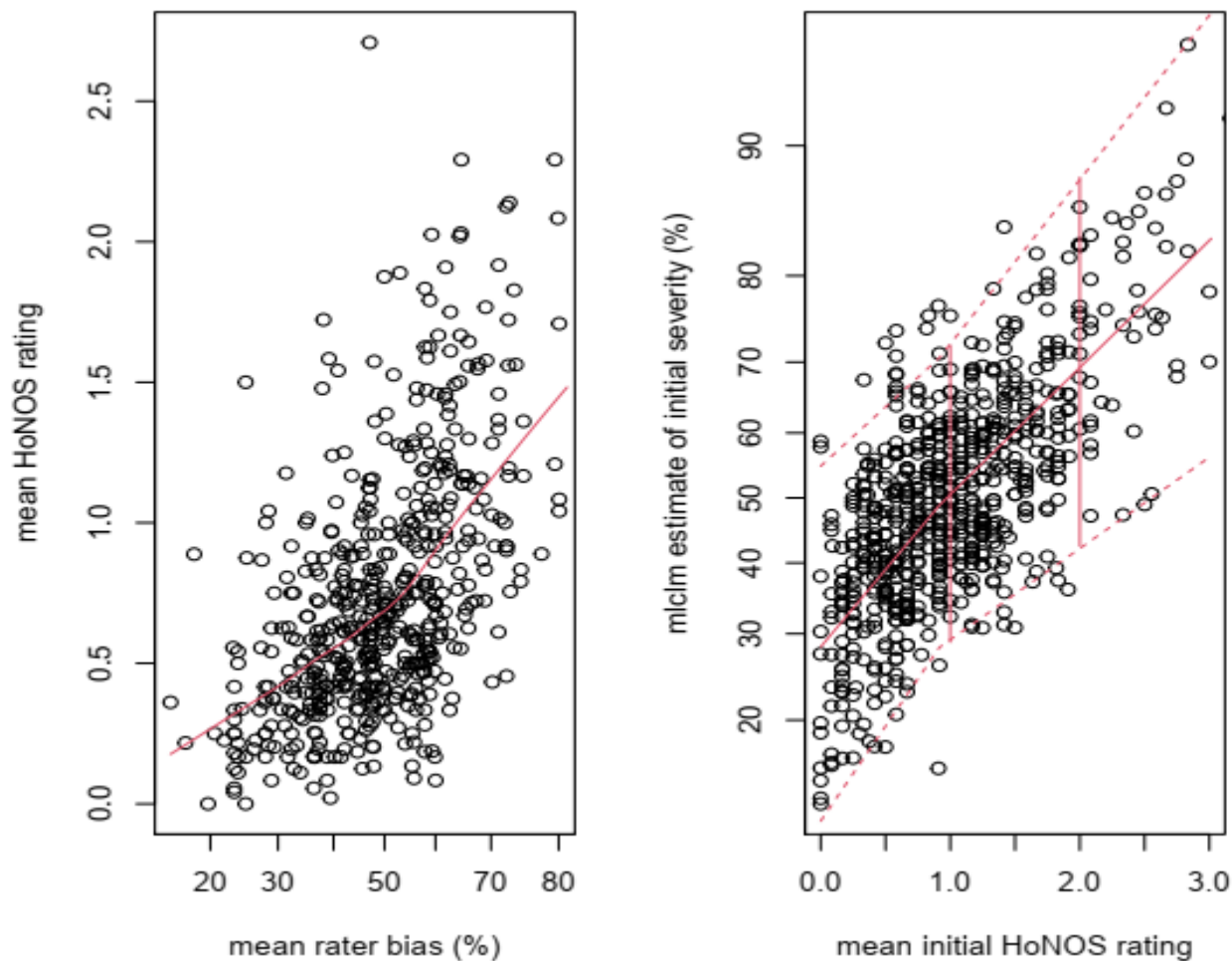
- 38 Kerns M-D, Hoyt W. Magnitude and moderators of bias in observer ratings: A meta-analysis. *Psychol Methods* 1999;**4**:403–24. <https://doi.org/10.1037/1082-989X.4.4.403> (accessed 17 Jul 2020).
- 39 Myford CM, Wolfe EW. Detecting and measuring rater effects using many-facet Rasch measurement: part I. *J Appl Meas* 2003;**4**:386–422.
- 40 Yeates P, Sebok-Syer SS. Hawks, Doves and Rasch decisions: Understanding the influence of different cycles of an OSCE on students' scores using Many Facet Rasch Modeling. *Med Teach* 2017;**39**:92–9. doi:10.1080/0142159X.2017.1248916
- 41 Edbrooke-Childs J, Boehnke JR, Zamperoni V, *et al.* Service- and practitioner-level variation in non-consensual dropout from child mental health services. *Eur Child Adolesc Psychiatry* 2020;**29**:929–34. doi:10.1007/s00787-019-01405-6
- 42 Glorioso TJ, Grunwald GK, Ho PM, *et al.* Reference effect measures for quantifying, comparing and visualizing variation from random and fixed effects in non-normal multilevel models, with applications to site variation in medical procedure use and outcomes. *BMC Med Res Methodol* 2018;**18**:74. doi:10.1186/s12874-018-0517-7
- 43 Triebwasser JE, Kamdar NS, Langen ES, *et al.* Hospital contribution to variation in rates of vaginal birth after cesarean. *J Perinatol* 2019;**39**:904–10. doi:10.1038/s41372-019-0373-2
- 44 Jacobs R, Gutacker N, Mason A, *et al.* Do higher primary care practice performance scores predict lower rates of emergency admissions for persons with serious mental illness? An analysis of secondary panel data. *Health Services and Delivery Research* 2015;**3**. doi:10.3310/hsdr03160
- 45 Carpenter CR, Raja AS, Brown MD. Overtesting and the Downstream Consequences of Overtreatment: Implications of “Preventing Overdiagnosis” for Emergency Medicine. *Acad Emerg Med* 2015;**22**:1484–92. doi:10.1111/acem.12820
- 46 Sperrin M, Bardwell L, Sergeant JC, *et al.* Correcting for rater bias in scores on a continuous scale, with application to breast density. *Stat Med* 2013;**32**:4666–78. doi:10.1002/sim.5848
- 47 Jacobs R, Chalkley M, Böhnke JR, *et al.* Measuring the Activity of Mental Health Services in England: Variation in Categorising Activity for Payment Purposes. *Adm Policy Ment Health* 2019;**46**:847–57. doi:10.1007/s10488-019-00958-7
- 48 James M, Painter J, Buckingham B, *et al.* A review and update of the Health of the Nation Outcome Scales (HoNOS). *BJPsych Bull* 2018;**42**:63–8. doi:10.1192/bjb.2017.17

- 49 Rock D, Preston N. HoNOS: is there any point in training clinicians? *J Psychiatr Ment Health Nurs* 2001;**8**:405–9. doi:10.1046/j.1365-2850.2001.00410.x
- 50 Webster J, Bretherton F, Goulter NS, *et al.* Does an educational intervention improve the usefulness of the Health of the Nation Outcome Scales in an acute mental health setting? *Int J Ment Health Nurs* 2013;**22**:322–8. doi:10.1111/j.1447-0349.2012.00868.x
- 51 Praetorius A-K, Lenske G, Helmke A. Observer ratings of instructional quality: Do they fulfill what they promise? *Learning and Instruction* 2012;**22**:387–400. doi:10.1016/j.learninstruc.2012.03.002
- 52 Andresen EM, Malmstrom TK, Schootman M, *et al.* Observer ratings of neighborhoods: comparison of two methods. *BMC Public Health* 2013;**13**:1024. doi:10.1186/1471-2458-13-1024
- 53 Carlo AD, Benson NM, Chu F, *et al.* Association of Alternative Payment and Delivery Models With Outcomes for Mental Health and Substance Use Disorders: A Systematic Review. *JAMA Netw Open* 2020;**3**:e207401–e207401. doi:10.1001/jamanetworkopen.2020.7401
- 54 Averitt AJ, Weng C, Ryan P, *et al.* Translating evidence into practice: eligibility criteria fail to eliminate clinically significant differences between real-world and study populations. *NPJ Digit Med* 2020;**3**:67. doi:10.1038/s41746-020-0277-8
- 55 Moore N, Blin P, Droz C. Pharmacoepidemiology. *Handb Exp Pharmacol* 2019;**260**:433–51. doi:10.1007/164\_2019\_318
- 56 Anhøj J, Hellesøe A-MB. The problem with red, amber, green: the need to avoid distraction by random variation in organisational performance measures. *BMJ Qual Saf* 2017;**26**:81–4. doi:10.1136/bmjqs-2015-004951
- 57 Braithwaite J, Herkes J, Ludlow K, *et al.* Association between organisational and workplace cultures, and patient outcomes: systematic review. *BMJ Open* 2017;**7**:e017708. doi:10.1136/bmjopen-2017-017708
- 58 Kobak KA. Inaccuracy in clinical trials: effects and methods to control inaccuracy. *Curr Alzheimer Res* 2010;**7**:637–41. doi:10.2174/156720510793499057



## FIGURE LEGENDS

**Figure 1:** Relations between mean HoNOS ratings and mlclm random effects

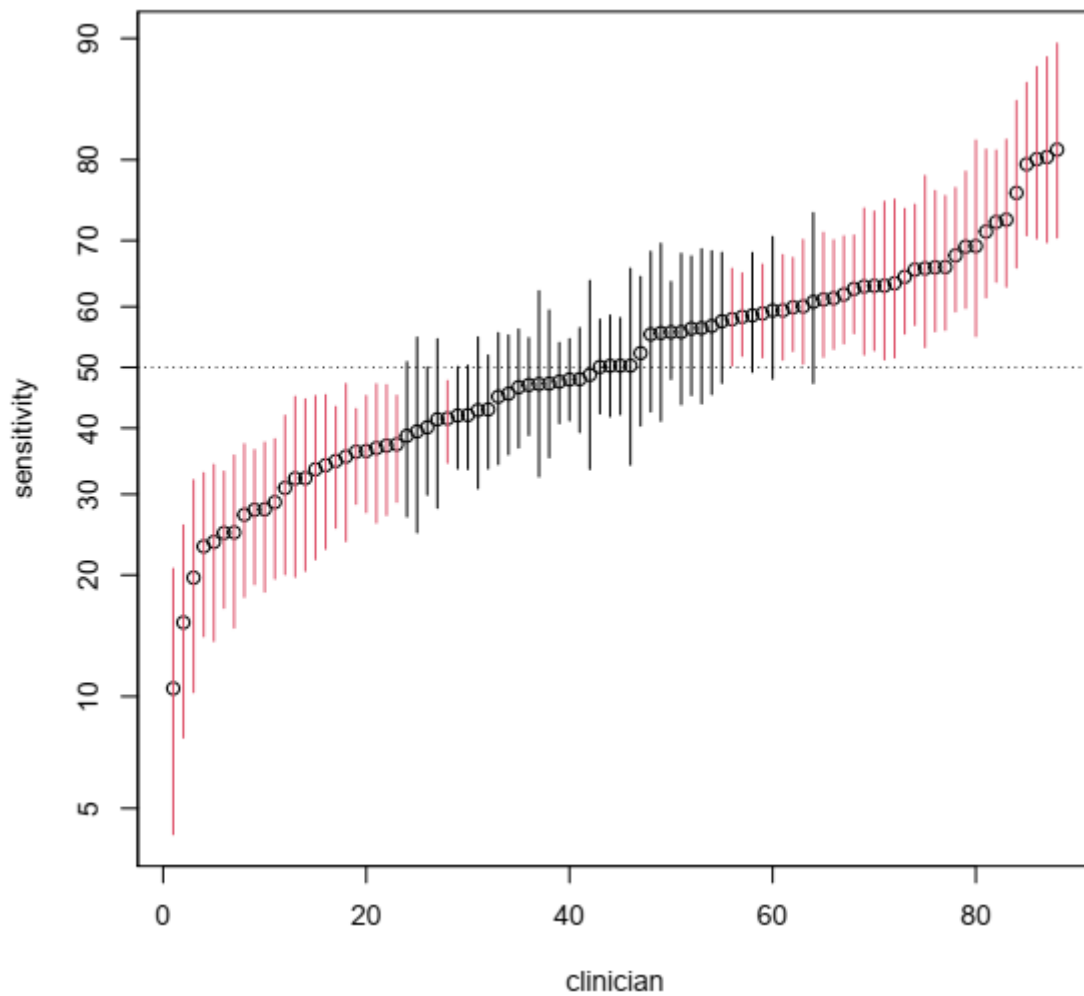


Legend:

Figure 1a shows the dependence of mean raw HoNOS ratings (y-axis) on clinician sensitivity/bias (x-axis). More sensitive clinicians give higher HoNOS ratings. The values of sensitivity are percentages of the total possible range (0% for a clinician who always rates every HoNOS item as “none”=0 ; 100% for a clinician who always rates every item as “severe”=4). The red line shows the smoothed median raw HoNOS rating at each level of clinician sensitivity/bias.

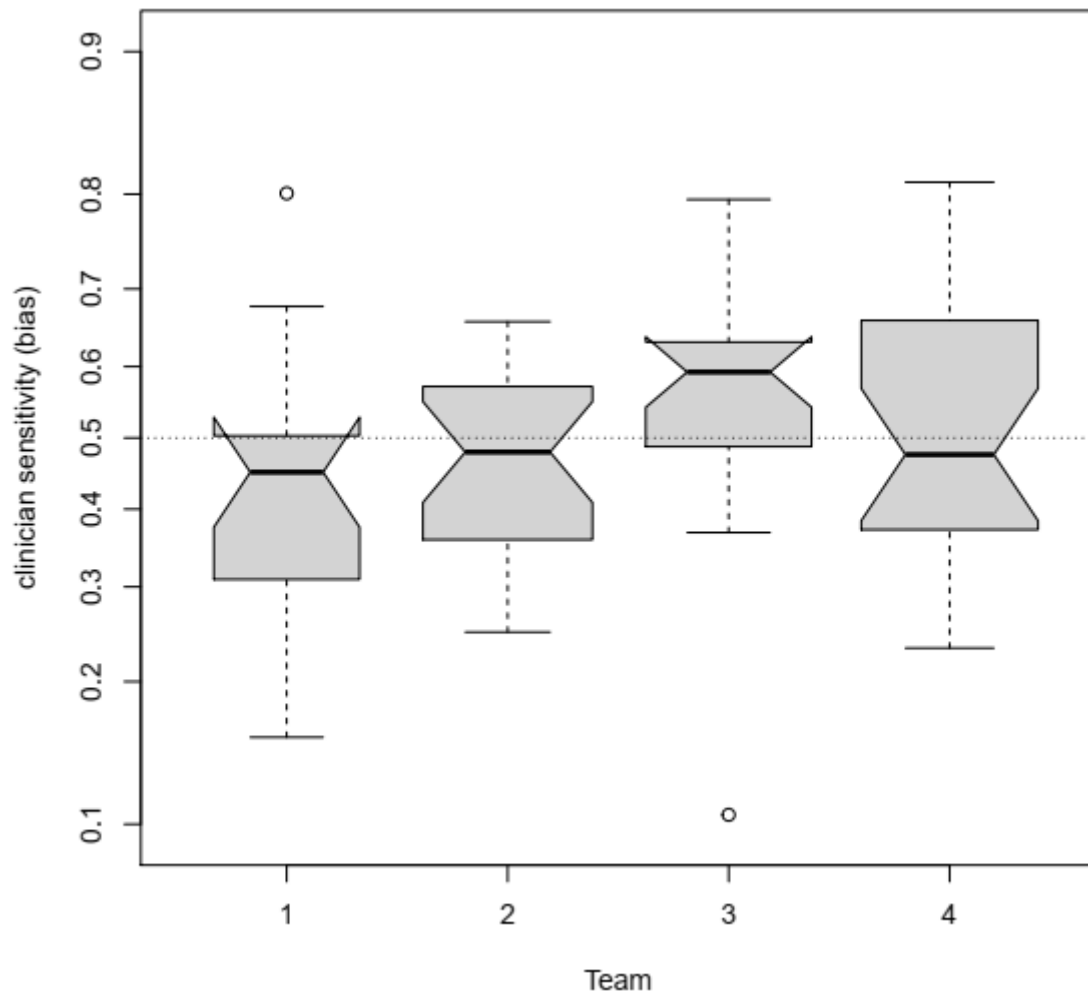
Figure 1b shows the dependence of the mlclm’s estimates of the initial severity of patients’ problems (y-axis) on mean raw initial HoNOS ratings (x-axis). The values for severity are percentages of the total possible range (corresponding to patients who always receive HoNOS ratings of either none=zero or severe=4, for all 12 scales). The dashed red lines show the 2.5th and 95th centiles of initial severity at each mean raw HoNOS rating. The vertical red lines show the 95% Confidence Limits of the ranges of initial severity that correspond to mean raw initial HoNOS ratings of 1=questionable or 2=mild).

**Figure 2:** The sensitivities (bias) of individual clinicians



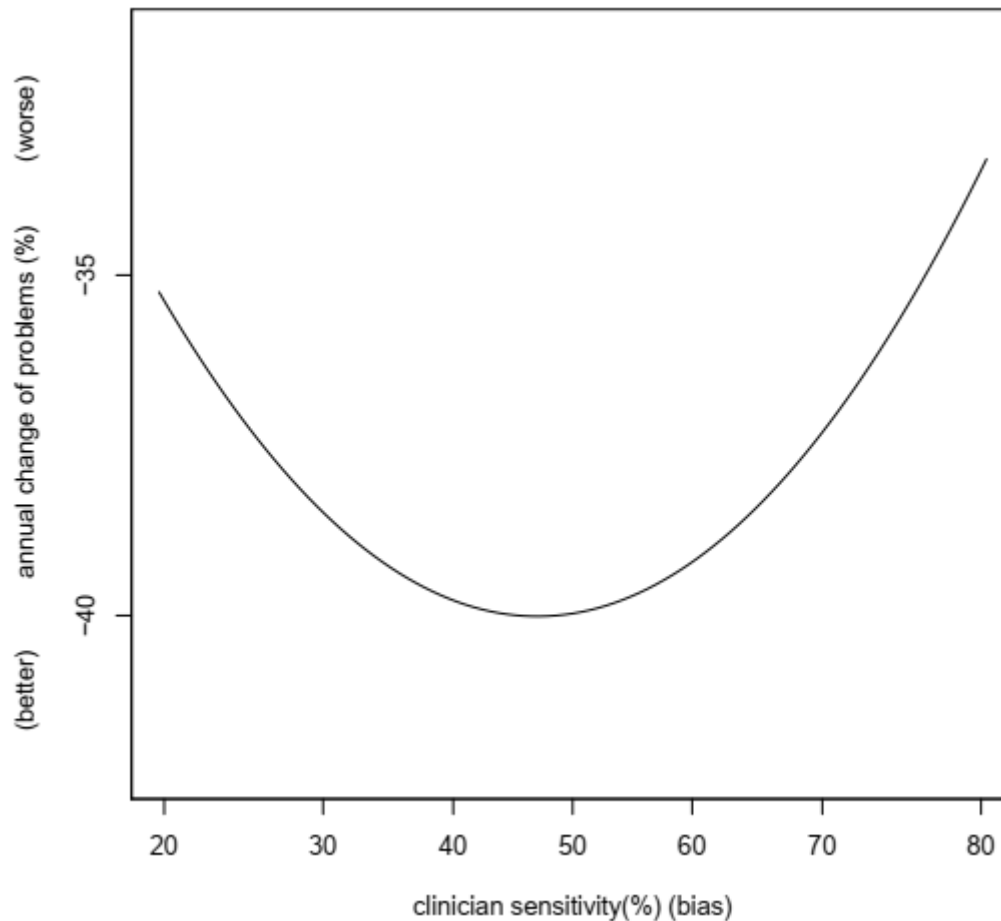
Legend: The caterpillar plot's y-axis shows the estimate of sensitivity for each clinician, together with its 95% Credible Interval from the Bayesian multi-level cumulative link model (mlcml). The scale of the y-axis is percentage sensitivity when rating HoNOS items (see details in legend of Figure 1). The x-axis shows the index for each clinician, ordered by increasing sensitivity. CIs in red do not overlap the average value (50%); less than one third of raters are 'average'.

**Figure 3:** Estimates of clinician sensitivity, grouped by CMHTs



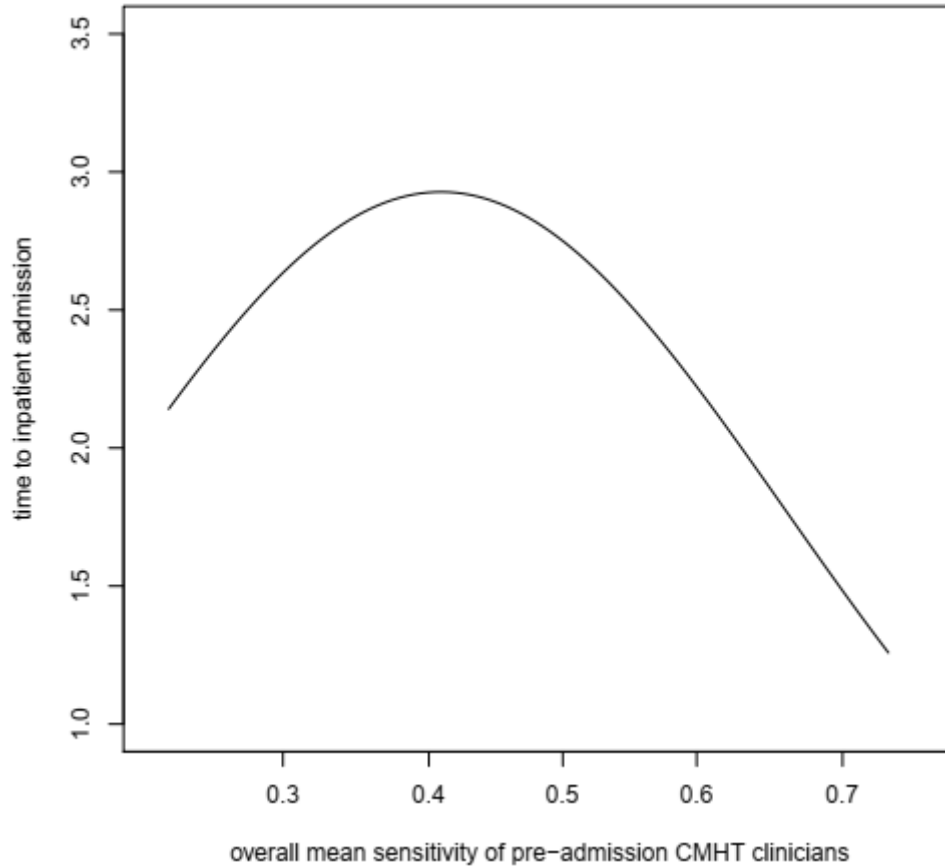
Legend: The notched box-and-whisker plots show the median and inter-quartile ranges of estimates of the clinician sensitivity (the random intercepts for clinicians in the mlcm). The whiskers cover 99% of the range predicted from the inter-quartile range. The notches represent the confidence intervals for the medians, so that two CMHTs whose notches do not overlap are likely to be differ significantly. The widths of the boxes are proportional to the numbers of each CMHT's clinicians.

**Figure 4:** Dependence of annual change of severity of patients' problems on clinician sensitivity



Legend: The x-axis represents the sensitivity of the first clinician to rate each patient (random intercepts for clinicians, from the mlclm). The graph truncates the range of clinician sensitivities at 1% and 99% of the full observed range. The y-axis represents the annual change of severity of patients' problems (random slopes across time for patients, from the mlclm). More negative slopes (smaller y-values) indicate faster resolution of patients' problems (better outcomes).

**Figure 5:** Dependence of time to inpatient admission on clinician sensitivity



Legend: The y-axis represents the average duration of community status for the group of patients who underwent inpatient admission. The x-axis represents the mean sensitivity of all CMHT clinicians who rated each patient before inpatient admission. The graph truncates the range of clinician sensitivities at 1% and 99% of the full observed range. Patients whose CMHT clinicians, overall, had the lowest or highest levels of sensitivity/bias had shorter intervals to inpatient admission (worse outcomes).