

1 **COVID-19: more than “a little flu”? Insights from the Swiss hospital-based surveillance of**  
2 **Influenza and COVID-19**

3 Georg Marcus Fröhlich<sup>1</sup>, Marlieke E. A. De Kraker<sup>2</sup>, Mohammed Abbas<sup>2</sup>, Olivia Keiser<sup>2</sup>,  
4 Amaury Thiabaud<sup>2</sup>, Maroussia Roulens<sup>2</sup>, Alexia Cusini<sup>3</sup>, Domenica Flury<sup>4</sup>, Peter W.  
5 Schreiber<sup>5</sup>, Michael Buettcher<sup>6</sup>, Natascia Corti<sup>7</sup>, Danielle Vuichard-Gysin<sup>8,9</sup>, Nicolas  
6 Troillet<sup>9,10</sup>, Julien Sauser<sup>2</sup>, Roman Gaudenz<sup>11</sup>, Lauro Damonti<sup>12</sup>, Carlo Balmelli<sup>9,13</sup>, Anne Iten<sup>2</sup>,  
7 Andreas Widmer<sup>9,14</sup>, Stephan Harbarth<sup>2,9</sup> and Rami Sommerstein<sup>9,12, 15</sup>

8

9 <sup>1</sup> HeartClinic Lucerne, St. Annastrasse 32, 6006 Lucerne, Switzerland and Charité –

10 Universitätsmedizin Berlin, Berlin, Germany

11 <sup>2</sup> Geneva University Hospitals and Faculty of Medicine, Infection Control program, Gabrielle-  
12 Perret-Gentil<sup>4</sup>, 1205 Geneva, Switzerland

13 <sup>3</sup> Kantonsspital Graubünden, Department for General Medicine, Loestrasse 170, CH-7000  
14 Chur

15 <sup>4</sup> Kantonsspital St. Gallen, Rorschacher Strasse 95, CH-9007 St. Gallen, Switzerland

16 <sup>5</sup> University Hospital Zurich, Division of Infectious Diseases and Hospital Epidemiology, and  
17 University of Zurich, Zurich, Switzerland

18 <sup>6</sup> Cantonal Hospital Lucerne, Pediatric Infectious Diseases, Spitalstrasse, 6000 Luzern,  
19 Switzerland

20 <sup>7</sup> Department for General Medicine, Klinik Hirslanden, Witellikerstrasse 40, 8032 Zürich,  
21 Switzerland

22 <sup>8</sup> Department for General Medicine, Spital Thurgau, Waldeggstrasse 8A, 8501 Frauenfeld

23 <sup>9</sup> Swissnoso, the National Center for Infection Control

24 <sup>10</sup> Department for Infectious Diseases, Hôpital du Valais, Av. Grand-Champsec 80, 1951 Sion

25 <sup>11</sup> Department for General Medicine, Kantonsspital Nidwalden, Ennetmooserstrasse 19,  
26 6370 Stans

27 <sup>12</sup> Department of Infectious Diseases, Bern University Hospital, Freiburgstrasse, 3010 Bern

28 <sup>13</sup> Ente Ospedaliero Cantonale Ticino, Division of Infection control and Hospital  
29 Epidemiology, CH-6500 Bellinzona, Switzerland

30 <sup>14</sup> Department for Infectious Diseases, University Hospital Basel, Spitalstrasse  
31 21/Petersgraben 4, 4031 Basel, Switzerland

32 <sup>15</sup> Infectious Diseases Center Central Switzerland, Lucerne, Switzerland

33

34 **Corresponding authors:**

35 PD Dr. med. Georg Fröhlich

36 HeartClinic Lucerne

37 St. Annastrasse 32

38 6006 Lucerne

39 Switzerland

40 [georg.froehlich@charite.de](mailto:georg.froehlich@charite.de)

41

42 PD Dr. med. Rami Sommerstein

43 Infectious Diseases Center Central Switzerland

44 Hirslanden Clinic St. Anna

45 St. Annastrasse 32

46 6006 Lucerne

47 Switzerland

48 [rami.sommerstein@hirslanden.ch](mailto:rami.sommerstein@hirslanden.ch) / [rami.sommerstein@extern.insel.ch](mailto:rami.sommerstein@extern.insel.ch)

49

50 **Word count body 2333/3500**

51 **3 Tables, 2 Figures**

52 **Abstract (248/250 words)**

53 **Background**

54 Coronavirus disease 19 (COVID-19) has frequently been colloquially compared to the  
55 seasonal influenza, but comparisons based on empirical data are scarce.

56 **Aims**

57 To compare in-hospital outcomes for patients admitted with community-acquired COVID-19  
58 to patients with community-acquired influenza in Switzerland.

59 **Methods**

60 Patients >18 years, who were admitted with PCR proven COVID-19 or influenza A/B infection  
61 to 14 participating Swiss hospitals were included in a prospective surveillance. Primary and  
62 secondary outcomes were the in-hospital mortality and intensive care unit (ICU) admission  
63 between influenza and COVID-19 patients. We used Cox regression (cause-specific models,  
64 and Fine & Gray subdistribution) to account for time-dependency and competing events  
65 with inverse probability weighting to account for confounders.

66 **Results**

67 In 2020, 2843 patients with COVID-19 were included from 14 centers and in years 2018 to  
68 2020, 1361 patients with influenza were recruited in 7 centers. Patients with COVID-19 were  
69 predominantly male (n=1722, 61% vs. 666 influenza patients, 48%,  $p<0.001$ ) and were  
70 younger than influenza patients (median 67 years IQR 54-78 vs. median 74 years IQR 61-84,  
71  $p<0.001$ ). 363 patients (12.8%) died in-hospital with COVID-19 versus 61 (4.4%) patients  
72 with influenza ( $p<0.001$ ). The final, adjusted subdistribution Hazard Ratio for mortality was  
73 3.01 (95% CI 2.22-4.09,  $p<0.001$ ) for COVID-19 compared to influenza, and 2.44 (95% CI,  
74 2.00-3.00,  $p<0.001$ ) for ICU admission.

75 **Conclusion**

76 Even in a national healthcare system with sufficient human and financial resources,  
77 community-acquired COVID-19 was associated with worse outcomes compared to  
78 community-acquired influenza, as the hazards of in-hospital death and ICU admission were  
79 ~3-fold higher.

## 80 Introduction

81 The clinical impact of the ongoing COVID-19 pandemic is frequently compared to the  
82 seasonal influenza<sup>1</sup>. This may be due to its pattern to spread worldwide, but also because of  
83 a similar initial clinical presentation<sup>2</sup>. It is difficult to distinguish an infection with SARS-CoV-2  
84 from an influenza A/B infection based on the clinical presentation. The most common  
85 symptoms are cough, fever, dyspnea or headache for both infections.

86 However, COVID-19 appears deleterious in many more aspects than influenza<sup>3</sup>; intensive  
87 care units reaching their limits, reduced number of elective procedures due to limited  
88 resources, national lockdowns to slow down the spread, and an unprecedented economic  
89 depression.

90 It is estimated, that up to 5000 patients with influenza A/B infection need hospitalization  
91 and approximately 1500 patients die each year during the influenza season in Switzerland<sup>4, 5</sup>.  
92 In comparison, COVID-19 has already caused more than 54.000 infections, 5400  
93 hospitalisations and 1800 deaths in Switzerland until 2nd October 2020<sup>6</sup>.

94 While influenza is a well investigated infection with clear preventive and treatment  
95 strategies, including vaccination and anti-viral drugs, these strategies have not yet been  
96 defined for COVID-19. Novel treatment strategies with dexamethasone or remdesivir have  
97 been investigated, but are still in the process of approval<sup>7,8</sup>. At the same time, 195 SARS-  
98 CoV-2019 projects have been registered to develop a dedicated SARS-CoV-2019 vaccine<sup>9</sup>. Of  
99 these, 9 candidates are currently evaluated in phase III trials<sup>9</sup>.

100 So far, only a few, small scale, retrospective studies directly compared hospital outcomes of  
101 COVID-19 and influenza infections<sup>10, 11</sup>. These studies demonstrated, that in COVID-19 as  
102 well as in patients with influenza infection, many patients have underlying co-morbidities  
103 that may impact on the course of disease independently<sup>10, 11</sup>. Due to the small sample size of  
104 these previous studies, it has been difficult to draw meaningful conclusions. However, the  
105 comparison of COVID-19 and seasonal influenza is important from a public health  
106 perspective. Therefore, we aimed to investigate differences in mortality and ICU admission  
107 among patients hospitalized for COVID-19 and influenza in Switzerland.

108 **Methods**

109 ***Hospital-based surveillance of COVID-19/Influenza cases in Switzerland – database***  
110 ***characteristics and study population***

111 All data are derived from the prospective database of the *Hospital-based surveillance of*  
112 *COVID-19/Influenza cases in Switzerland*. The database was originally initiated to collect data  
113 for all hospitalized influenza cases during the Influenza season 2018/19 by the Institute of  
114 Global Health at the University of Geneva, Switzerland. In total, 14 Swiss based hospitals,  
115 including all Swiss university hospitals contributed data. Seven centers collected data for all  
116 patients who were hospitalized with influenza A/B (start date: 28 October 2018) and 14  
117 centers (including 5 overlaps) for SARS-CoV-2 (start date: 19 February 2020).

118 A standardized, central, REDCap hosted electronic questionnaire for data collection was set  
119 up for data entry in the participating centers<sup>12, 13</sup>.

120 Hospital data included patient demographics, main diagnosis, non-invasive or invasive  
121 ventilation, cardiovascular, pulmonary or neurologic complications, hospital and ICU  
122 admission and discharge date, as well as co-morbidities or death<sup>12, 13</sup>. Inclusion required a  
123 positive PCR based test obtained from any respiratory sample.

124 Only data for completed hospitalizations of patients >18 years up to July 24th 2020 were  
125 included for the analyses. Potential hospital-acquired infections (with PCR diagnosis  
126 obtained later than 2 days after admission) were excluded to focus on patients with  
127 influenza or COVID-19 present on admission.

128 The study was approved by the Ethics Committee of the Canton of Geneva, Switzerland.  
129 (CCER 2018-00577, 2020-00827). Data collection was also approved by all local Ethics  
130 Committees.

131

132 ***Outcome measures***

133 The primary outcome measure was defined as *in-hospital all-cause mortality*. Secondary  
134 outcome was admission to the Intensive Care Unit (ICU). Further exploratory end-points  
135 included cardiovascular, pulmonary, renal or neurologic complications during  
136 hospitalization, length of stay and antibiotic treatment.

137

138 *Statistical analysis*

139 For the primary and secondary outcome analyses we used cause specific cox hazard models  
140 for the outcome of interest, while accounting for competing risks (hospital discharge for  
141 hospital mortality; discharge and death before ICU admission for ICU admission) to prevent  
142 overestimation of the impact of COVID-19<sup>14</sup>. Patients that stayed more than 30 days were  
143 right-censored in all models. To adjust for differences in baseline characteristics, inverse  
144 probability weighting was applied using clinical and epidemiological factors present at  
145 admission significantly associated with influenza versus COVID-19, as determined by  
146 univariate logistic regression models<sup>15</sup>. We applied truncation at 1<sup>st</sup>/99<sup>th</sup> percentile. The  
147 method and results of the validation of the weights is provided in Supplementary Table 1. In  
148 a second step, subdistribution hazard analysis using the Fine & Gray model were applied to  
149 determine the cumulative risk of death or ICU admission associated with COVID-19 versus  
150 influenza. The main analyses were adjusted for gender, age, and university hospital as  
151 treatment center (available for all cases). In a subgroup analysis we adjusted in addition for  
152 body weight and the presence of comorbidities. Since this information was not  
153 systematically collected by all centers we included only patients/centers where this info was  
154 available (n=2634; 1731 for COVID-19 and 903 for Influenza). There, we also adjusted for  
155 weight and presence of comorbidities (cardiovascular, asthma, respiratory, hemato-  
156 immunological, renal and neurological; Suppl. Table 2). Further subgroup analysis focused on  
157 i) “in-hospital transfers” to the ICU, excluding direct admission to the ICU from the  
158 community and ii) community transfers, excluding patients admitted from long term care  
159 facilities (LTCF), as during the COVID-19 pandemic fewer LTCF cases may have been  
160 transferred to hospital to prevent overburdening of hospital capacities. As the date of  
161 outcome was only recorded for mortality and ICU admission, we only calculated the crude  
162 incidence for all other outcomes. All analyses were performed in “R (R Core Team, Version  
163 4.0.2)”, using packages *survival*, *ipw*, *CausalGAM* and *cmprsk*<sup>16</sup>. Two-tailed tests were  
164 performed and p-values <0.05 were considered statistically significant.

## 165 **Results**

### 166 *Baseline characteristics*

167 In total, 4441 patients were available from the two surveillance databases, of which 217  
168 patients had to be excluded (170 for COVID-19 and 47 for Influenza), because hospital  
169 admission or discharge date were missing.

170 In total, 2843 patients with a confirmed diagnosis of community-acquired COVID-19 were  
171 included from 14 acute care hospitals all over Switzerland between 19th February 2020 and  
172 22nd July 2020, including all 5 Swiss university hospitals. This represents 50% of all reported  
173 hospitalizations in Switzerland<sup>17</sup> (4569 hospitalizations as of 3<sup>rd</sup> September 2020). Between  
174 26th October 2018 and 26th March 2020 1331 patients (96.4%) with influenza A and 50  
175 patients (3.6%) with influenza B were included from the influenza database from 7 centers,  
176 including 3 university hospitals. The majority of patients with COVID-19 (2476/2843, 87%) as  
177 well as those with influenza A/B (1220/1381, 97%) were directly referred to one of the  
178 participating hospitals. Several patients were transferred from local district hospitals to  
179 specialized facilities (4.9 % of COVID-19 patients and 3.3 % of Influenza patients), 4.8%  
180 (n=137) of the COVID-19 patients were transferred from a LTCF compared to 5.2% (n=72) of  
181 the influenza patients.

182

183 On average, patients with COVID-19 were younger, than patients with influenza A/B  
184 infection (median 67 years [IQR 54-78] versus 74 years [IQR 61-84],  $p<0.001$ ) and were  
185 predominantly male (n=1722, 61% vs. 666 influenza patients, 48%,  $p<0.001$ ), (Table 1).

186

### 187 *Outcomes*

188 Table 2 gives an overview of the crude clinical outcomes for patients with COVID-19 or  
189 influenza A/B. Crude hospital mortality among COVID-19 patients was almost three times  
190 higher than for influenza A/B patients (363, 12.8% in COVID-19 patients and 61 patients,  
191 4.4% with influenza A/B). ICU admission was also more frequent among COVID-19 patients  
192 (483, 19.4%) compared to influenza patients (129, 9.8%). Similarly, invasive ventilation was  
193 more common in COVID-19 patients (394, 13.9%) compared to influenza patients (66, 4.8%,  
194  $p<0.001$ ).

195 The results of the cause-specific cox hazards ratios are available in Table 3. The adjusted  
196 subdistribution Hazards Ratio (sdHR) for in-hospital mortality was 3.01 (95% CI 2.22-4.09,  
197  $p < 0.001$ ) for COVID-19 versus influenza, and 2.44 (95% CI, 2.00-3.00,  $p < 0.001$ ) for ICU  
198 admission (selected variables and balance of weights in Supplementary Table 1). The  
199 cumulative incidence plots of the primary and secondary outcomes are shown in Figures 1 &  
200 2: Most patients were discharged alive within a week, whereby discharge rates were higher  
201 for influenza. Most deaths occurred after the first week, and steadily increased up to two  
202 weeks after admission, again rates were higher for COVID-19. ICU admission mostly occurred  
203 early during stay (Figure 2).

204 The adjusted sdHR for mortality within the 2634 complete cases was 3.14 (95% CI 2.11-4.68,  
205  $p < 0.001$ ; balance of weights for confounders are shown in Supplementary Table 2). The  
206 adjusted sdHR for ICU admission, excluding the  $n=302$  patients directly being admitted to  
207 the ICU on the day of hospitalization was 5.05 (95% CI, 3.54-7.20,  $p < 0.001$ ; cumulative  
208 incidence plot in Suppl. Fig 1). The adjusted sdHR for mortality in the subgroup, excluding  
209  $n=209$  direct transfers from LTCF was 3.10 (95% CI, 2.23-4.32;  $p < 0.001$ ).



## 210 **Discussion**

211 This study directly compared the outcomes of patients hospitalized for influenza A/B or  
212 COVID-19 in a prospective nation-wide Swiss surveillance database. After taken account of  
213 competing events as well as imbalances between patient groups, community-acquired  
214 COVID-19 was associated with a 3-fold increased cumulative risk to die within hospital,  
215 compared to an influenza A/B infection. This increase was associated with a higher daily  
216 mortality risk as well as an increased length of stay in hospital for COVID-19 patients.  
217 Similarly, COVID-19 patients had a more than two-fold increased risk of being transferred to  
218 the ICU than influenza patients.

219 The COVID-19 pandemic poses a tremendous medical, socio-economic and also financial  
220 burden for many countries. In the absence of a curative treatment or vaccination, it is  
221 impossible to offer easy solutions. At the same time, COVID-19 is sometimes downplayed to  
222 be only a „little flu“<sup>1, 18, 19</sup>. However, the virus characteristics, as well as the course of disease  
223 in COVID-19 appear to be more serious than for influenza in several aspects: SARS-CoV-2  
224 appears to be more contagious with a reproductive number of 2-2.5 and is contagious even  
225 in patients without symptoms or before symptoms appear<sup>2</sup>. The WHO reports, that 80% of  
226 COVID-19 cases are mild, 15% might need hospitalization and 5% of hospitalized patients  
227 require ventilation<sup>2</sup>. In comparison, a study from Germany including 34.493 patients with  
228 influenza infections demonstrated, that 3.7% of patients needed hospitalization, and of  
229 these 5% received invasive ventilation<sup>20</sup>. In our study, 13.9% of the hospitalized COVID-19  
230 patients needed mechanical ventilation, compared to 4.7% of the influenza patients. These  
231 numbers underline the clinical importance of SARS-CoV-2 infections.

232 In our study, patients with COVID-19 were predominantly male and had a median age of 67  
233 years, while influenza patients were predominantly female and older (median age 74 years).  
234 Therefore, the *years of potential life lost* are likely to be higher in COVID-19, which is  
235 underlined by the fact that COVID-19 patients were less likely to have significant co-  
236 morbidities than influenza patients. At the same time, all their clinical outcomes were worse  
237 than those for influenza patients, which persisted even after adjustment for possible  
238 confounders. The WHO estimates infection fatality rates of 3-4% for COVID-19, while  
239 infection fatality rates are usually much lower in the range of 0.1% for seasonal influenza  
240 infections<sup>2</sup>. In our Swiss hospital surveillance, the cumulative incidence of mortality of

241 hospitalized COVID-19 patients at day 30 was 11.4% compared to 3.6% in hospitalized  
242 influenza patients. Previous studies reported mortality rates of hospitalized COVID-19  
243 patients in the range of 4% to 28%<sup>21, 22</sup>. In addition, up to 2<sup>nd</sup> October 2020 already 4890  
244 COVID-19 cases have been hospitalized in Switzerland, which has resulted in more than 1800  
245 associated deaths, which is higher than the total number of influenza-associated deaths in  
246 previous influenza seasons<sup>5, 23</sup>.

247 In the presented Swiss cohort, the cumulative incidence of COVID-19 patients with ICU  
248 admission up to day 30 was 19.4%, compared to 9.9% in the influenza group. Interestingly,  
249 influenza patients who needed intensive care, were transferred to ICU early after hospital  
250 admission. In contrast, the proportion of ICU transfers in COVID-19 patients increased  
251 steadily up to 5 days after hospital admission (Figure 2).

252 Apart from respiratory complications, also neurologic impairment or kidney failure were  
253 more common in the COVID-19 cohort. It is unclear whether this finding might be explained  
254 by vasculitis and thromboembolic events, which are common in COVID-19<sup>24</sup>. Surprisingly,  
255 there was no difference in cardiovascular complications. While antibiotic therapy was more  
256 common in patients with influenza in this Swiss cohort, it remains unclear whether influenza  
257 is more often associated with pulmonary bacterial superinfection than COVID-19.

258 The present study has several limitations. The impact of various treatment strategies could  
259 not be analyzed in the presented Swiss cohort. It can be assumed that mortality for the  
260 included COVID-19 patients was relatively high, since the majority of the presented cases  
261 occurred early during the COVID-19 pandemic, and knowledge about the best supportive  
262 treatment strategies has slowly increased over time. For influenza treatment strategies have  
263 been more clearly defined, so the current findings may not apply to future COVID-19  
264 cases. Of note, ~1/3 of comorbidity data was missing, because it was not mandatory for the  
265 surveillance. As it was missing at random, specific centers did not report this data, we carried  
266 out a complete cases analysis for the primary outcome. The point-estimate of the complete  
267 case analysis fell within the 95% CI of the main analysis, indicating that absence of this data  
268 did not introduce a major bias.

269 Post-discharge follow-up was not available neither for influenza nor for COVID-19 patients,  
270 as such differences in long-term morbidity could not be discerned while it is assumed that  
271 these may have a higher incidence among COVID-19 cases. Finally, since no data was

272 available for co-infection with influenza and SARS-CoV 2 this could not be considered.  
273 However, a study from Wuhan found that only 4% of COVID-19 patients had a co-infection  
274 with influenza,<sup>25</sup> and no difference in the course of disease was noted in comparison to  
275 COVID-19 alone<sup>25</sup>.

## 276 **Conclusion**

277 In this prospective Swiss, multi-center hospital cohort, COVID-19 was associated with a 3-  
278 fold higher hazard for hospital mortality and for ICU transfer compared to seasonal influenza  
279 A/B infection. This indicates that among hospitalized patients, COVID-19 versus influenza has  
280 a larger excess mortality, and COVID-19 cannot be considered as a “little flu” in this cohort

281 **Acknowledgment Section**

282 **Acknowledgments**

283 We thank all participating centers for providing their surveillance data.

284 These data were collected in collaboration with the Swiss Federal Office of Public Health.

285 With contributions of the Clinical Research Center, Geneva University Hospitals and Faculty  
286 of Medicine, Geneva. The authors want to especially thank Markus Schneemann,  
287 Department for General Medicine, Spitäler Schaffhausen, Promenadenstrasse 21, 8200  
288 Schaffhausen, Switzerland; Laurence Senn, Hygiene, prevention et controle de l'infection,  
289 Centre Hospitalier Universitaire Vaudoise, Rue du Bugnon 21, CH-1011 Lausanne, Lisa  
290 Brockhaus, Department for General Medicine, Hôpital du Jura, Fbg des Capucins 30, 2800  
291 Delémont, and Jonas Marschall, Bern University Hospital for acting as local principal  
292 investigators in the hospital-based surveillance.

293

294 **Author's Role**

295 Conception and Design: GF, RS, MdK, SH, AW, CB, MA. Acquisition of Data: AI, OK, AT, MR,  
296 AC, DF, PWS, MB, NC, DVG, NT, RG, LD, CB, AW, AW, SH

297 Statistics: MdK, RS, SH, JS, MA; Writing of first draft: GF, RS, MdK. Interpretation and

298 Analysis: All authors; RS is guarantor of the paper. All authors have seen, critically revised  
299 and approved the manuscript.

300

301 **Funding statement**

302 Swiss Hospital Surveillance for Influenza and COVID-19 was supported by the Swiss Federal  
303 Office of Public Health

304

305 **Conflict of interest statement**

306 Marlieke E.A. de Kraker was supported by the IMI Joint Undertaking (JU) (grant 115523),  
307 Combatting Bacterial Resistance in Europe, with resources including financial contribution  
308 from the EU's Seventh Framework Programme and in-kind contributions from companies in  
309 the European Federation of Pharmaceutical Industries and Associations (EFPIA).

310 Peter W Schreiber received grant support from the Career funding program "Filling the Gap"  
311 of the Medical Faculty of the University of Zurich.

312

313 **Data sharing statement**

314 Swiss COVID-19/Influenza Hospital Surveillance data access is available from:

315 <https://www.unige.ch/medecine/hospital->

316 [covid/files/4015/9427/6937/CH\\_SUR\\_Multicentric\\_process\\_final.pdf](https://www.unige.ch/medecine/hospital-covid/files/4015/9427/6937/CH_SUR_Multicentric_process_final.pdf)

317 **Tables.**

318 **Table 1. Baseline characteristics of COVID-19 and influenza patients in the Swiss**  
319 **surveillance database**

Characteristics	SARS-CoV-2 (n=2843)	Influenza A/B (n=1381)	p-value
Age (years), median (IQR)	67 (54-78)	74 (61-84)	<0.001
Female sex, n (%)	1121 (39.4)	715 (51.8)	<0.001
Admission to university hospital, n (%)	1597 (56.2)	935 (67.7)	<0.001
BMI (kg/m <sup>2</sup> ), median (IQR)	26.7 (23.7, 30.5) <sup>†</sup>	25.2 (21.8, 29.4) <sup>††</sup>	<0.001
Comorbidities, n (%)			
Diabetes mellitus	522 ( 26.9) *	291 (28.2) **	0.578
Chronic cardiovascular disease	737 ( 38.0) *	473 (45.9) **	<0.001
Renal impairment	374 ( 19.3) *	243 (23.6) **	0.011
Chronic pulmonary disease	413 ( 21.3) *	322 (31.2) **	<0.001
Chronic neurologic impairment	276 ( 14.2) *	190 (18.4) **	0.002
Haematological disorder	39 ( 2.0) *	160 (15.5) **	<0.001
Chronic liver disease	114 ( 5.9) *	57 ( 5.5) **	0.873

320 Missing values n (%): <sup>†</sup>856 (30%), <sup>††</sup>518 (38%), \*904 (32%), \*\*350 (25%), as reporting of

321 BMI/comorbidities was not mandatory and omitted by some centers. IQR, interquartile

322 range; BMI, body mass index

323

324 **Table 2. Unadjusted crude outcomes for patients with microbiologically confirmed**  
325 **community-acquired COVID-19 or influenza infections**

	<b>SARS-CoV-2 (n=2843)</b>	<b>Influenza A/B (n=1381)</b>	<b>p-value</b>
In-hospital deaths, n (%)	363 (12.8)	61 ( 4.4)	<0.001
Admission to the ICU, n (%)	483 (19.4)	129 ( 9.8)	<0.001
Invasive ventilation, n (%)	394 (13.9)	66 ( 4.8)	<0.001
Respiratory complications, n (%)	2082 (93.6)*	744 (83.9)**	<0.001
Cardiac disease, n (%)	556 (25.0) *	212 (23.9)**	0.291
Neurologic impairment, n (%)	394 (17.7)*	82 ( 9.2)**	<0.001
Kidney failure, n (%)	601 (27.0)*	149 (16.8)**	<0.001
Length of hospital stay, median (IQR)	8 (5-16)	7 (4-13)	<0.001
Any antibiotic treatment, n (%)	1539 (61.7) <sup>+</sup>	862 (65.7) <sup>++</sup>	<0.001

326 Missing values n (%): \*618 (22%), \*\*494 (36%), <sup>+</sup>349 (12), <sup>++</sup>69 (5), as reporting of these  
327 complications was not mandatory and omitted by some centers. ICU, intensive care unit;  
328 IQR, interquartile range.

329

330 **Table 3. Adjusted hazard ratios of primary and secondary outcomes (COVID-19 vs.**  
331 **influenza) by weighted cause-specific (CS) Cox models. Patients with hospital duration >30**  
332 **days were right-censored at day 30.**

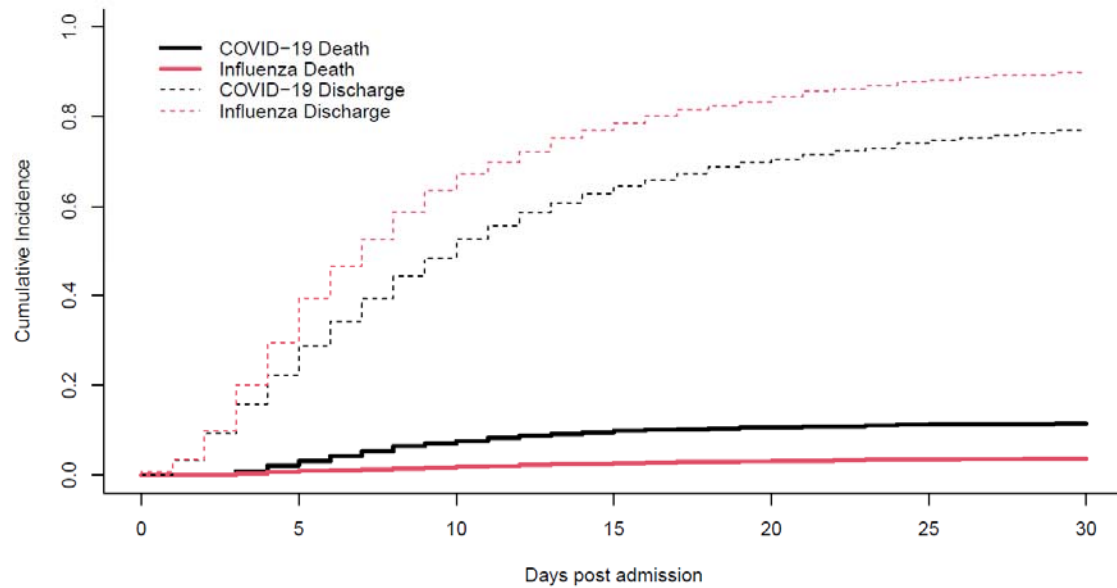
	<b>CS Hazard ratio</b>	<b>95% Confidence interval</b>	<b>p-value</b>
Primary outcome analysis			
Hospital mortality	2.58	1.90-3.50	<0.001
Hospital discharge	0.78	0.72-0.84	<0.001
Secondary outcome analysis			
ICU admission	2.46	2.00-3.01	<0.001
Death before ICU admission	3.93	2.61-5.95	<0.001
Discharge alive before ICU admission	0.95	0.87-1.03	0.181

333



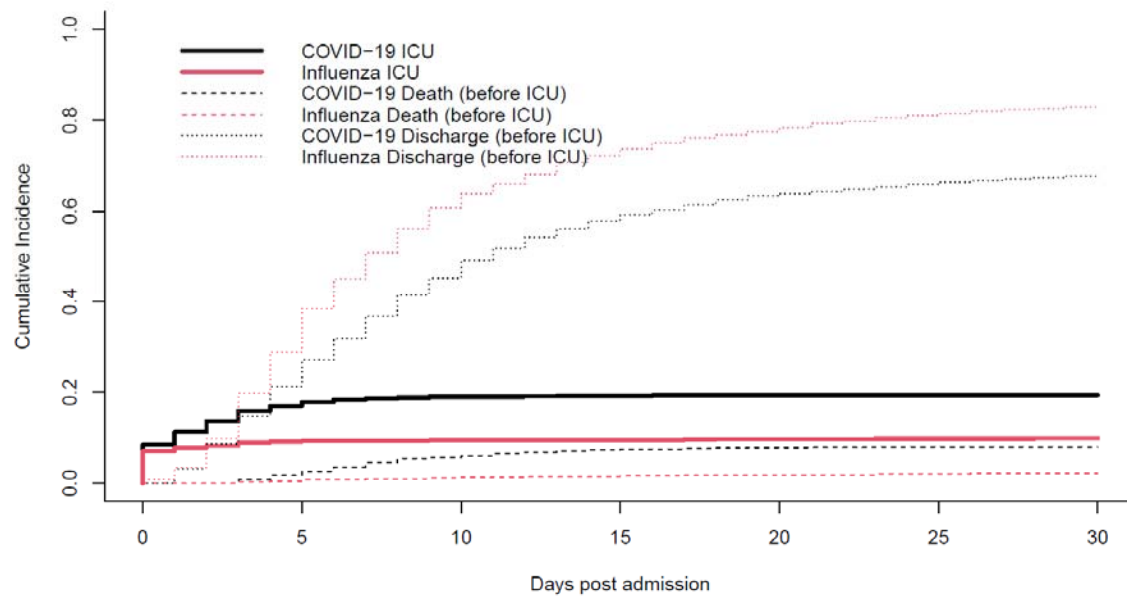
334 **Figures.**

335 **Figure 1. Cumulative incidence plot. Mortality with discharge as competing risk, by disease**  
336 **status (COVID-19 versus influenza)**



337

338 **Figure 2. Cumulative incidence plot. ICU admission with discharge and death before ICU**  
339 **admission as competing risk, by disease status (COVID-19 versus influenza)**



340

341 **Supplementary Materials**

342 **Supplementary Table 1: Balance check of inverse probability weights**

343 We used balance.IPW from the CausalGAM package (Ref R): This function calculates  
344 weighted means of covariates and then examines the differences in the weighted means  
345 across influenza and COVID-19 cases as a diagnostic for covariate balance for inverse  
346 probability weighting.

347 The standardized mean differences between all variables in the dataset are reported along  
348 with a z-statistics for these standardized differences, whereby z-statistics closer to 0 imply  
349 better univariate mean balance.

350 The columns are (from left to right) the observed mean of the covariate among the COVID-  
351 19 patients, the observed mean of the covariate among the influenza patients, the weighted  
352 mean of the covariate among the COVID-19 patients, the weighted mean of the covariate  
353 among the influenza patients, the weighted mean difference, and the z-statistic for the  
354 difference.

355 The formula (logistic regression with logit-link) used for calculation of weights was:

356  $\text{Virus\_type} \sim \text{Age} + \text{Gender} + \text{Admission\_to\_University Hospital}$

357

	obs.mean. C	obs.mean. I	w.mean.C	w.mean.I	w.mean.di ff	z
Age	65.11	70.41	66.76	66.43	0.33	2.252
Gender (% female)	0.39	0.52	0.44	0.45	-0.01	-3.717
Admission to University hospital (%)	0.56	0.68	0.60	0.60	-0.00	-0.689

358

359 **Supplementary Table 2: Balance check of inverse probability weights for complete case**  
 360 **analysis**

361 The formula (logistic regression with logit-link) was:

362  $\text{Virus\_type} \sim \text{Age} + \text{Gender} + \text{Admission\_to\_University Hospital} + \text{weight} +$   
 363  $\text{com\_cardiovascular} + \text{comorbidity\_asthma} + \text{comorbidity\_neuro\_impair} + \text{comorbidity}$   
 364  $\_renal + \text{comorbidity\_hemato\_immuno}$

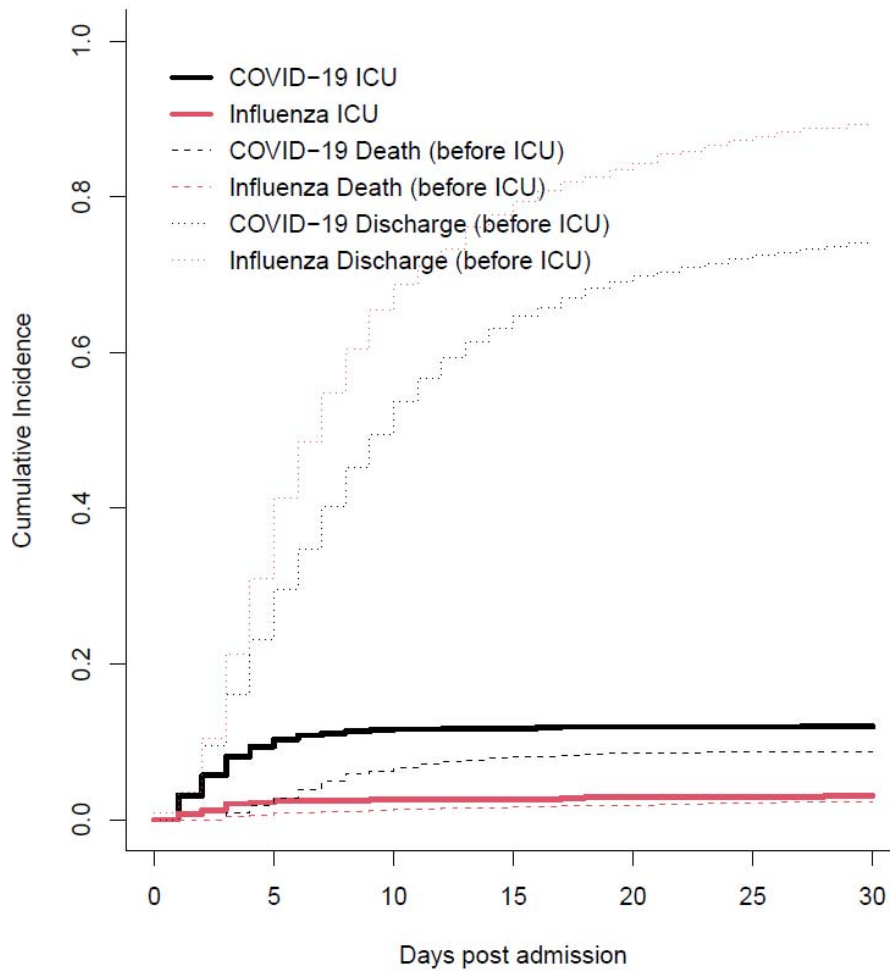
365 The table contains the same information as explained above (Supplementary Table 1).

	obs.mean.Covid-19	obs.mean.Influenza	w.mean.Covid-19	w.mean.Influenza	w.mean.diffz	
Age	68.957	73.196	70.788	70.667	0.122	0.
Gender (female)	0.406	0.494	0.439	0.445	-0.006	-C
Admission to university hospital	0.515	0.681	0.573	0.577	-0.004	-C
Weight	79.253	73.37	77.023	77.457	-0.434	-1
Comorbidities (Yes/No)						
Cardiovascular	0.392	0.464	0.423	0.423	0	0.
Asthma	0.091	0.134	0.108	0.109	-0.001	-C
Neurological impairments	0.139	0.171	0.149	0.16	-0.011	-3
Renal	0.201	0.252	0.228	0.223	0.005	0.
Hematological/immunological	0.021	0.159	0.074	0.065	0.009	1.

366

367 **Supplementary Figure 1**

368 **Cumulative incidence plot. ICU admission with discharge and death before ICU admission**  
369 **as competing risk, by disease status (COVID-19 versus influenza); Patients directly**  
370 **admitted to the ICU from the community were excluded for this subgroup analysis.**



371

## 372 **References**

- 373 1. Molina B. Facebook pulls Trump post comparing COVID-19 to flu; Twitter adds warning. USA  
374 Today 2020.
- 375 2. WHO. Q&A: Influenza and COVID-19 - similarities and differences. 2020.
- 376 3. Bank W. The Global Economic Outlook During the COVID-19 Pandemic: A Changed World.  
377 2020.
- 378 4. Gesundheit Bf. Saisonale Grippe 2011/2012: Zeit, sich impfen zu lassen. BAG Bulletin.  
379 2011;**42**:899–901.
- 380 5. BAG. Situationsbericht zur epidemiologischen Lage in der Schweiz. 2020.
- 381 6. University JH. Coronavirus map. 2020.
- 382 7. Grein J, Ohmagari N, Shin D, Diaz G, Asperges E, Castagna A, Feldt T, Green G, Green ML,  
383 Lescure FX, Nicastri E, Oda R, Yo K, Quiros-Roldan E, Studemeister A, Redinski J, Ahmed S, Bennett J,  
384 Chelliah D, Chen D, Chihara S, Cohen SH, Cunningham J, D'Arminio Monforte A, Ismail S, Kato H,  
385 Lapadula G, L'Her E, Maeno T, Majumder S, Massari M, Mora-Rillo M, Mutoh Y, Nguyen D, Verweij E,  
386 Zoufaly A, Osinusi AO, DeZure A, Zhao Y, Zhong L, Chokkalingam A, Elboudwarej E, Telep L, Timbs L,  
387 Henne I, Sellers S, Cao H, Tan SK, Winterbourne L, Desai P, Mera R, Gaggar A, Myers RP, Brainard DM,  
388 Childs R, Flanigan T. Compassionate Use of Remdesivir for Patients with Severe Covid-19. *N Engl J*  
389 *Med* 2020;**382**(24):2327-2336.
- 390 8. Group RC, Horby P, Lim WS, Emberson JR, Mafham M, Bell JL, Linsell L, Staplin N, Brightling C,  
391 Ustianowski A, Elmahi E, Prudon B, Green C, Felton T, Chadwick D, Rege K, Fegan C, Chappell LC,  
392 Faust SN, Jaki T, Jeffery K, Montgomery A, Rowan K, Juszczak E, Baillie JK, Haynes R, Landray MJ.  
393 Dexamethasone in Hospitalized Patients with Covid-19 - Preliminary Report. *N Engl J Med* 2020.
- 394 9. Pharmaunternehmen VdF. Vaccines to protect against Covid-19, the new coronavirus  
395 infection. 2020.
- 396 10. Faury H, Courboules C, Payen M, Jary A, Hausfater P, Luyt C, Dres M, Pourcher V, Abdi B,  
397 Wirden M, Calvez V, Marcelin AG, Boutolleau D, Burrel S. Medical features of COVID-19 and influenza  
398 infection: A comparative study in Paris, France. *J Infect* 2020.
- 399 11. Zayet S, Kadiane-Oussou NJ, Lepiller Q, Zahra H, Royer PY, Toko L, Gendrin V, Klopfenstein T.  
400 Clinical features of COVID-19 and influenza: a comparative study on Nord Franche-Comte cluster.  
401 *Microbes Infect* 2020.
- 402 12. Geneve Ud. Hospital based surveillance of influenza in Switzerland - a pilot study. 2018.
- 403 13. Geneve Ud. Hospital based surveillance of Covid-19 in Switzerland. 2019.
- 404 14. Lau B, Cole SR, Gange SJ. Competing risk regression models for epidemiologic data. *Am J*  
405 *Epidemiol* 2009;**170**(2):244-56.

- 406 15. Samore MH, Shen S, Greene T, Stoddard G, Sauer B, Shinogle J, Nebeker J, Harbarth S. A  
407 simulation-based evaluation of methods to estimate the impact of an adverse event on hospital  
408 length of stay. *Med Care* 2007;**45**(10 Supl 2):S108-15.
- 409 16. Team RC. A language and environment for statistical computing. R Foundation for Statistical  
410 Computing, Vienna, Austria. 2017.
- 411 17. [statista.com](https://www.statista.com). Number of hospitalizations due to the coronavirus (COVID-19) in Switzerland in  
412 2020. 2020.
- 413 18. S K. Is It Like the Flu? Is It a Major Threat? Trump's Changing Coronavirus Message. *New York*  
414 *Times* 2020.
- 415 19. CNN. Bolsonaro calls coronavirus a 'little flu.'. 2020.
- 416 20. von der Beck D, Seeger W, Herold S, Gunther A, Loh B. Characteristics and outcomes of a  
417 cohort hospitalized for pandemic and seasonal influenza in Germany based on nationwide inpatient  
418 data. *PLoS One* 2017;**12**(7):e0180920.
- 419 21. Wang D, Hu B, Hu C, Zhu F, Liu X, Zhang J, Wang B, Xiang H, Cheng Z, Xiong Y, Zhao Y, Li Y,  
420 Wang X, Peng Z. Clinical Characteristics of 138 Hospitalized Patients With 2019 Novel Coronavirus-  
421 Infected Pneumonia in Wuhan, China. *JAMA* 2020.
- 422 22. Zhou F, Yu T, Du R, Fan G, Liu Y, Liu Z, Xiang J, Wang Y, Song B, Gu X, Guan L, Wei Y, Li H, Wu  
423 X, Xu J, Tu S, Zhang Y, Chen H, Cao B. Clinical course and risk factors for mortality of adult inpatients  
424 with COVID-19 in Wuhan, China: a retrospective cohort study. *Lancet* 2020;**395**(10229):1054-1062.
- 425 23. Schweiz BfS. Mortality and cause of death. 2020.
- 426 24. Mondal S, Quintili AL, Karamchandani K, Bose S. Thromboembolic disease in COVID-19  
427 patients: A brief narrative review. *J Intensive Care* 2020;**8**:70.
- 428 25. Ding Q, Lu P, Fan Y, Xia Y, Liu M. The clinical characteristics of pneumonia patients coinfectd  
429 with 2019 novel coronavirus and influenza virus in Wuhan, China. *J Med Virol* 2020.

430

