

## Assessment of the Impact of COVID-19 pandemic on population level interest in Skincare: Evidence from a google trends-based Infodemiology study

Hasan Symum<sup>1\*</sup>, Md. F. Islam<sup>2</sup>, Habsa K. Hiya<sup>3</sup>, and Kh M. Ali Sagor<sup>4</sup>

<sup>1</sup>Department of Industrial and Management System Engineering, University of South Florida, Tampa, FL, United States

<sup>2</sup>Department of Industrial Engineering and Management, Khulna University Of Engineering & Technology, Khulna, Bangladesh

<sup>3</sup>MUMA College of Business, University of South Florida, Tampa, Florida, United States

<sup>4</sup>Dhaka Medical College Hospital, Dhaka, Bangladesh

\*Corresponding Author

### Abstract

**Background:** COVID-19 pandemic created an unprecedented disruption of daily life including the pattern of skin related treatments in healthcare settings by issuing stay-at-home orders and newly coronaphobia around the world.

**Objective:** This study aimed to evaluate whether there are any significant changes in population interest for skincare during the COVID-19 pandemic.

**Methods:** For the skincare, weekly RSV data were extracted for worldwide and 23 countries between August 1, 2016, and August 31, 2020. Interrupted time-series analysis was conducted as the quasi-experimental approach to evaluate the longitudinal effects of COVID-19 skincare related search queries. For each country, autoregressive integrated moving average (ARIMA) model relative search volume (RSV) time series and then testing multiple periods simultaneously to examine the magnitude of the interruption. Multivariate linear regression was used to estimate the correlation between countries' relative changes in RSV with COVID-19 confirmed cases/ per 10000 patients and lockdown measures.

**Results:** Out of 23 included countries in our study, 17 showed significantly increased ( $p < 0.01$ ) RSVs during the lockdown period compared with the ARIMA forecasted data. The highest percentage of increments occurs in May and June 2020 in most countries. There was also a significant correlation between lockdown measures and the number of COVID-19 cases with relatives changes in population interests for skincare.

**Conclusion:** Understanding the trend and changes in skincare public interest during COVID-19 may assist health authorities to promote accessible educational information and preventive initiatives regarding skin problems.

**Keywords:** COVID-19, Google Trends, Skin care, Interrupted time-series

## Introduction

Corona Virus Disease 2019 (COVID-19) which was first thought of pneumonia later detected as a novel coronavirus, SARS-CoV-2, on December 31, 2019, originated in Wuhan (Hubei), China. Due to the continuous increment of new cases WHO (World Health Organization) first called it an international emergency on January 31, 2020, then later on March 11, 2020, it was declared as a pandemic. On September 10, 2020, total reported cases were approximately 27.5 million in more than 213 countries and territories around the world with a mortality rate of 4.30% and daily cases of 258,000. To restrict the propagation of new cases, lots of preventive measures (international flight ban, social distancing, mass gathering ban, issuing stay home, etc.) were taken around the world. This restriction brought disruption in the daily life of people as they can't do physical activity properly. Besides the increase of screen exposure leads the young generation to the sleepless problem.<sup>1</sup> People of dysmorphic concern usually went to Beauty Service for improving their behavioral appearance through engagement and practice are now having higher dysmorphic concern for "Stay Home" order.<sup>2</sup> In addition, dermatitis patients who have skin problems like hair and scalp diseases usually needed to take treatment from hospitals now also suffering from this situation.<sup>3</sup>

With the increase of internet users around the globe, Infodemiology has become a very useful informatics method, especially for epidemic and pandemic situations. The Infodemiology study provides real-time surveillance in the health system by Google Trends which has already been used for studying epidemics like the 2009 influenza.<sup>4,5</sup> Besides, Google Trends also used for monitoring behavioral analysis such as for analyzing the smoking ban in China, incidence analysis of HIV infection from Tweets, and multiple sclerosis (MS) analysis in English-speaking countries.<sup>6-8</sup> Several studies have done using Google Trends for monitoring the impact of COVID-19 on public interests-based health parameters such as loss-of-smell in the COVID-19 patients, dental problems associated with "toothache" and "tooth pain" keyword search, rapid declination on total joint arthroplasty (TJA), and increase interest in smoking cessation.<sup>9-14</sup> In addition, Google Trends also used for finding the anxiety associated with search queries terms of "face mask" and "wash hands".<sup>15</sup>

There have been very few studies that have done about the impact of COVID-19 in the dermatological study using Google Trends. The investigation of people's interests in dermatologic conditions (i.e. "acne", "eczema", "hair loss", etc.) was the only research where Google Trends were used, specifically, there is no research found about the effect of COVID-19 on skincare.<sup>16</sup> In our study we aimed to determine whether there is any significant change in the public interest in skincare during COVID-19 by using Google Trends.

## Methods

### COVID-19 Case Data

Daily data on laboratory-confirmed cases and deaths were collected in the COVID-19 web tracker by the Johns Hopkins University Center for Systems Science and Engineering (CSSE).<sup>17</sup> Daily confirmed COVID-19 cases were retrieved for the worldwide and individual countries from January 22, 2020, to August 31, 2020.

## Country Specific Data

Information on COVID-19 related lockdown restriction and stay home order duration were obtained from each state country's official website. Weekly seasonally adjusted national and state insured unemployment rates were obtained from the World bank website from January 22, 2020, to August 1, 2020.<sup>18</sup> Each countries total population for the year 2019 was extracted from the World meter to calculate per 100 thousand COVID-19 cases.

Skin disease-related (per 100 thousand children) in the individual were also included in our study from the national disease burden study for the year 2016. Finally, state-by-state percentage of uninsured children and child immunization rates were obtained from America's Health Rankings website which provides national health benchmarks and state rankings on various health measures.<sup>19</sup>

## Measures

Country level Inclusion criteria were: a population of more than one million, more than 100 COVID-19 deaths per million, and 50% internet users of the total population. Google Trends country wise data was queried from January 2015 to August 2020 using the search topic "Skin Care". Daily confirmed COVID-19 cases were obtained from the data repository by the Johns Hopkins University

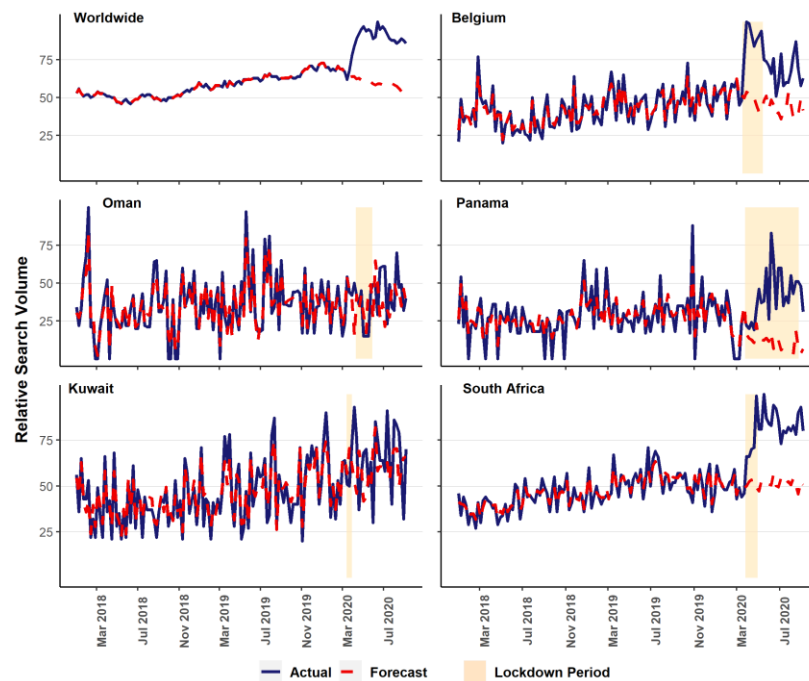
## Statistical Analysis

Interrupted time-series analysis was conducted as the quasi-experimental approach to evaluate the longitudinal effects of COVID-19 skincare related search queries around the world.<sup>20,21</sup> For this purpose, this analysis involved identifying the best fit autoregressive integrated moving average (ARIMA) model for each countries' RSV time series and then testing multiple periods simultaneously to examine the magnitude of the interruption. ARIMA modeling is appropriate for studying the transient and permanent effect of interruption events by taking account of dependency and seasonality between data points in time series.<sup>22,23</sup> For each country, the four steps Box-Jenkins methodology was used to select the best fitting time series ARIMA model and this approach has been widely used in modeling time series interruptions particularly with health policy changes.<sup>24</sup> To estimate the magnitude and duration of the effect of COVID-19 related restriction measures, dummy variables were added for every month after March 11, 2020, on which WHO declared COVID-19 as a pandemic. Estimates were made both for the five months combined and for the separate month. Output was measured in the relative changes (%) in RSV to the expected level without the occurrence of COVID-19 restrictions for each period. In addition, we also used a multivariate linear regression model to estimate the correlation between the country's relative changes in RSV after 11th March with COVID-19 -confirmed cases/ per 10000 patients, lockdown orders, after adjusting covariates of the unemployment growth, skin disease rate and internet user rates. All the statistical analyses were performed using R and a p-value less than 0.01 was considered significant for effect sizes. IRB approval was not required because this study did not involve human subjects.

## Results

Across the world, relative search volume (RSV) for skincare has increased continuously after WHO (World Health Organization) declared COVID-19 as a global pandemic from March 11, 2020, and it continues until May 09, 2020. After that, the rate of RSV was decreased slightly but still, it remains higher in many countries. In our study, we selected 23 countries from all over the world where only two Asian Countries and South Africa met the design criteria along with the countries of Europe and the Americas (Appendix Table-1). Among the selected countries, Chile has the most confirmed COVID-19 cases (20,061) and Belgium has the most confirmed death rate in per hundred thousand population. The lockdown style imposed in most countries was nationwide except five countries where Belgium, Canada, and the USA imposed state-based lockdown, and Chile and Russia imposed city-based lockdown. Of 23 countries, 17 showed significantly ( $p < 0.01$ ) increased RSVs during the lockdown period compared with the ARIMA forecasted data with a mean confidence interval (CI) of 95% (Table 1). The correlation between lockdown measures and the number of COVID-19 cases found significant from the multivariate linear regression analysis with a p-value of less than 0.05 (Table 2).

**Figure 1: Actual and ARIMA forecasted mean RSV values in worldwide and five countries**



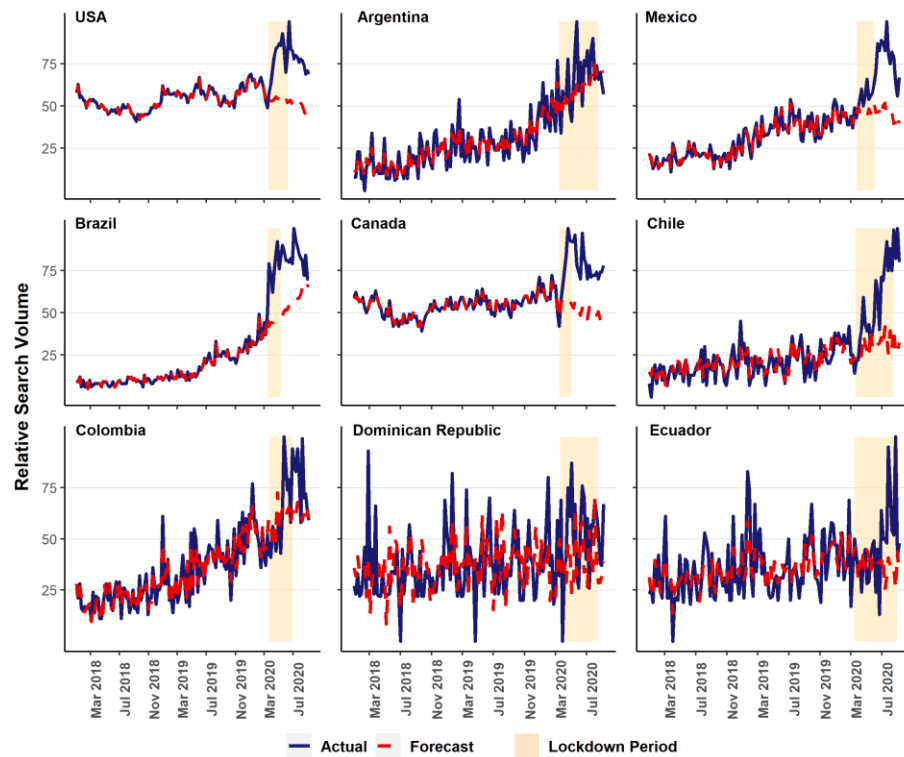
The worldwide interest in skincare started to increase from March 15 with a significant increment in April (22.48%, CI of [16.37, 28.60] %) and reached the highest increment in May (29.62%, CI of [22.23, 37.00] %). After May, the increment in worldwide RSVs started to slow down (Figure 1), but the trend is still significantly higher compared to the forecasted value in August (16.3%, CI of [6.08, 26.53] %). The RSV trend in two south Asian countries showed a varied impact during the COVID-19 pandemic and lockdown restriction measures. Compared with the forecasted value,

Oman showed a significant increment in RSVs in May and August while there were no such significant changes in Kuwait. Besides, South Africa showed a significant increment in RSVs in March (48.09%, CI of [ 32.62, 63.55] %) and April (82.09%, CI of [ 65.21, 98.98] %) though from May the trends started to decrease.

**Table 1: Monthly relative volume changes for skincare after COVID-19 pandemic**

Percentage (%) relative search volume changes Mean (95% CI)						
Country	March-2020	April-2020	May-2020	June-2020	July-2020	August-2020
Worldwide	-4.13 (-8.48,0.22)	22.48 (16.37,28.60)	29.62 (22.23,37.00)	22.92 (14.46,31.38)	20.62 (11.26,29.97)	16.3 (6.08,26.53)
Argentina	-2.83 (-20.64,14.98)	23.00 (3.34,42.67)	48.16 (26.82,69.49)	47.99 (25.14,70.84)	73.91 (49.67,98.16)	49.38 (23.85,74.92)
Belgium	33.99 (16.93,51.05)	71.47 (52.40,90.54)	66.47 (46.51,86.43)	31.58 (11.36,51.79)	17.91 (-3.18,39.00)	31.75 (11.02,52.47)
Brazil	38.63 (30.03,47.24)	87.93 (75.36,100.51)	88.08 (73.36,102.80)	71.53 (55.19,87.88)	75.97 (58.14,93.80)	47.74 (28.09,67.40)
Canada	-17.03 (-22.53,-11.53)	31.83 (26.17,37.50)	43.77 (37.50,50.04)	40.95 (34.50,47.9)	24.07 (18.05,30.10)	27.24 (21.25,33.22)
Chile	-2.12 (-25.98,21.73)	77.42 (52.07,102.76)	51.03 (28.30,73.76)	138.37 (112.91,163.84)	131.23 (107.22,155.24)	153.39 (129.21,177.58)
Colombia	-12.88 (-27.73,1.97)	-8.43 (-26.98,10.13)	8.61 (-12.85,30.06)	27.34 (3.12,51.57)	32.52 (6.40,58.65)	37.04 (8.72,65.36)
Dominican Republic	53.08 (4.01,102.15)	66.15 (15.76,116.53)	86.68 (35.01,138.35)	66.15 (13.22, -119.07)	81.08 (26.93,135.23)	60.55 (5.20,115.89)
Ecuador	-9.36 (-46.66,27.94)	-1.65 (-41.45,38.15)	-1.65 (-43.80,40.50)	63.92 (19.54,108.29)	54.28 (7.78,100.77)	92.84 (44.32,141.36)
France	-2.40 (-17.87,13.07)	19.00 (0.11,37.88)	25.72 (4.31,47.13)	36.67 (11.46,61.87)	12.89 (13.64,39.42)	7.15 (-20.72,35.02)
Germany	35.82 (24.50,47.14)	24.77 (13.71,35.83)	20.56 (8.61,32.51)	19.66 (6.50,32.82)	15.70 (2.45,28.96)	3.22 (-10.41,16.86)
Italy	16.64 (-1.15,34.43)	56.55 (36.57,76.54)	49.96 (26.19,73.73)	9.33 (-16.80,35.45)	12.18 (-16.42,40.78)	6.50 (-24.18,37.17)
Kuwait	59.29 (7.67,110.90)	35.89 (-4.59,76.37)	36.16 (-7.38,79.70)	39.23 (-6.25,84.72)	8.94 (-34.38,52.25)	10.05 (-32.87,52.98)
Mexico	-3.34 (-17.50,10.83)	6.42 (-8.83,21.67)	38.36 (21.32,55.39)	62.01 (43.51,80.51)	74.34 (54.51,94.17)	62.13 (40.82,83.44)
Netherlands	-3.97 (-15.56,7.61)	50.87 (38.60,63.15)	32.46 (19.70,45.21)	19.14 (5.06,33.22)	-1.68 (-16.19,12.83)	9.83 (-4.81,24.46)
Oman	-37.03 (-71.30, -2.76)	-15.55 (-47.49,16.70)	-18.93 (-52.65,14.79)	55.14 (22.33,87.95)	30.38 (-2.12,62.88)	46.12 (11.91,80.34)
Panama	-3.89 (-57.80,50.02)	33.07 (-27.38,93.52)	65.10 (-1.24,131.45)	146.42 (74.67,218.18)	47.85 (-13.35,31.90)	84.82 (3.31,66,33)
Portugal	3.61 (-14.32,21.54)	58.10 (38.82,77.37)	53.49 (32.84,74.14)	38.18 (-16.53,59.83)	9.28 (12.31,57.09)	60.04 (36.28,83.80)
Romania	15.59 (-1.30,32.48)	119.92 (102.80,137.05)	64.82 (47.94,81.70)	47.99 (27.62,68.37)	34.70 (-51.06,53.63)	48.39 (26.59,70.18)
Russia	-1.99 (-22.75,18.77)	-3.06 (-28.98,22.86)	-7.32 (-37.53,22.89)	-7.32 (-41.19,26.64)	-13.71 (30.79,71.54)	-19.04 (-59.48,21.20)
South Africa	2.38 (-11.58,16.34)	48.09 (32.62,63.55)	82.09 (65.21,98.98)	60.04 (41.46,78.63)	51.16 (-18.580,17.17)	62.06 (41.64,82.48)
Spain	-21.77 (-35.70, -7.84)	18.69 (4.07,33.30)	23.70 (8.43,38.97)	-3.21 (-19.42,12.68)	0.69 (-15.80,17.17)	4.53 (-12.53,21.58)
UK	1.77 (-6.67,10.22)	75.56 (65.95,85.18)	80.54 (70.39,90.69)	52.29 (41.51,63.06)	55.50 (44.05,66.95)	30.30 (19.47,41.13)
USA	-11.70 (-17.65, -5.76)	25.29 (17.76,32.82)	42.63 (34.54,50.72)	30.10 (21.35,38.85)	26.77 (18.40,35.13)	21.61 (12.91,30.31)

**Figure 2: Actual and ARIMA forecasted mean RSV values in American countries**



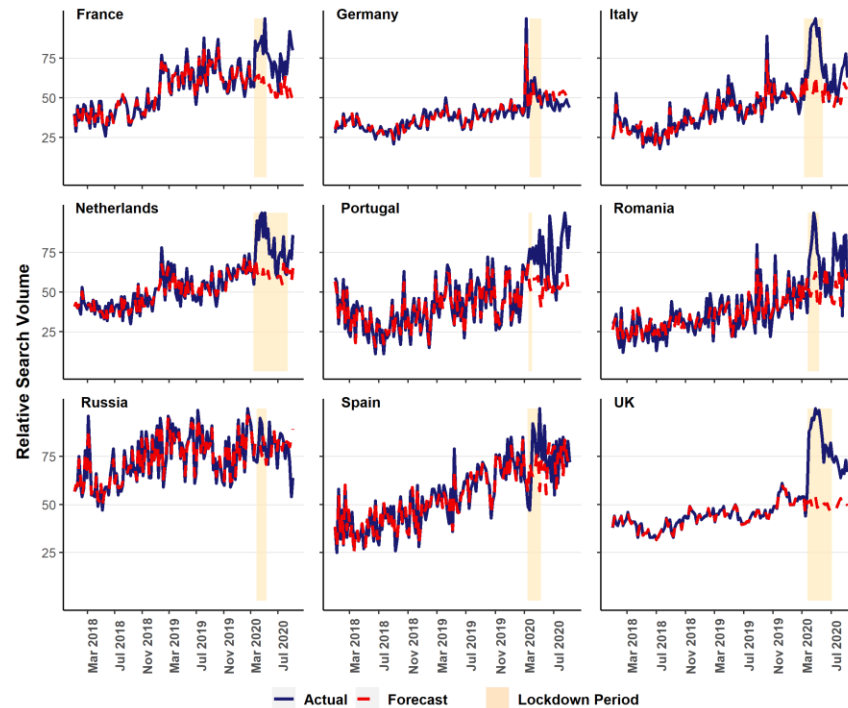
**Table 2: Multi-variate regression results**

Coefficients	Estimate	Standard Error	P value
Constants	6.810	8.820	0.447
<b>Lockdown Measures</b>	<b>3.782</b>	<b>1.681</b>	<b>0.029</b>
<b>COVID-19 cases per 100 Thousand</b>	<b>0.001</b>	<b>0.001</b>	<b>0.002</b>
Unemployment rate changes	-1.406	1.493	0.351
Skin disease related death per 100 Thousand	0.280	0.327	0.397
Internet usage percentage	0.028	0.173	0.870

Among the countries in the Americas, the USA, Brazil, Canada, Chile, and Panama showed the steeper increase in RSVs at the beginning of the lockdown whereas Mexico, Columbia, and Ecuador showed a higher increment in the late period (Figure 2). The highest increment in RSV values for the Americas was found in Chile in August (153.39%, CI of [129.21, 177.58] %). In the USA, the highest percentage change of RSVs seen in May (42.63%), and the trend still above the forecasted trend. The trends of Argentina and the Dominican Republic followed the forecasted trend though there is still an unprecedented steeper increase in RSV values. Of all selected countries in the Americas, only Columbia and Ecuador showed a decrease in RSVs with no significant relationship. Like the Americas, European countries also showed the earlier steeper increase in RSVs with a significant percent increase except for Russia (Figure 3). Italy and Spain showed a significant increase in RSVs at the beginning of lockdown, though in the late part of the

lockdown this change started to decrease. The UK had the most unprecedented trend in the RSVs, and the significant percent increase had seen on April 26 (80.54%, CI of [70.39,90.69] %). Although Germany and Spain had shown the earlier increment, the trend went down rapidly after the lockdown withdrew.

**Figure 3: Actual and ARIMA forecasted skincare mean RSV values in European countries**



## Discussion

In summary, the illustration of Google Trends data in the result section clearly shows that there is a significant change in the public interest in skincare treatment during the COVID-19 pandemic. Most of the selected countries showed a significant increment in Google Trends mostly in May, specifically, during the lockdown period. However, countries of Asia, the Dominican Republic, and Russia showed no significant change in public interests at all. These results suggest that people around the world have a concern about skincare treatment. Therefore, based on the increment in Google Trends, it can be assumed that people having skin related disease need skincare surveillance.

From the selected Americas countries, Chile showed the highest increment in RSVs for skincare in August (153.39%). This increment in Chile could be happened due to the lockdown (150 days) restriction which had seen to cause the sleeping problem, screen exposure, and disruption in behavioral appearance.<sup>1,2</sup> Of all Americas countries, the USA was hit hard by most COVID-19 cases and deaths (WHO). This surge of cases caused a huge impact on the healthcare system in the USA such as in diabetics to care, substantial racial and ethnic disparities, and cognitive heart failure, etc.<sup>25-27</sup> Like the other healthcare patients, the dermatology patients also affected by this

consequence. More than 50% of the dermatology outpatients decreased in the USA during the lockdown period which might be a reason for the upward trend for skincare.<sup>28</sup> After the USA, Brazil was the second country in the Americas which was mostly affected by COVID-19. The Google Trend for Brazil also followed the same way the USA went in the lockdown period.

The Google Trends for skincare in the UK showed the highest increment of all selected European countries. The trends started to increase when the lockdown was first imposed in the UK and reached the highest increment on April 26 (80.54%). A similar study showed that Google Trends for mental health deterioration also reached the highest increment in late April during the lockdown.<sup>29</sup> This similarity in April suggests that the highest increment in the UK could be happened due to the lockdown measures. Besides the UK, this similar increment in trends was also found in Italy, France, and Belgium. In Italy, dermatological surgery patients in the restricted zone were reduced by approximately more than 45%.<sup>30</sup> This decrement suggests the reason behind the continuous RSVs increment in Italy. Despite the surge of COVID-19 cases and deaths, Russia and Spain the only two countries showed little change in RSVs increment. However, this unexpected change in Russia may be related to Google's lower search engines market share (< 60%) compared to other European countries.

From the analysis of Google Trends, it can be inferred that skincare outpatients have decreased during this COVID-19 pandemic. Therefore, people with skin problems need proper healthcare directions. For such a case, Telehealth might provide a probable solution to the skincare patients which is being widely used during this pandemic.<sup>31,32</sup> The effectiveness of Telehealth has already been seen as patients surveillance in reducing the mental health burden, reducing exposure of obstetric patients, and surgical post-operative care, etc.<sup>12,33-35</sup> Just like Telehealth, Teledermatology could also provide patient surveillance for the skin disease patients.<sup>36</sup> Besides, Teledermatology would be a very useful service for those patients who are living in the rural side of the world.<sup>37</sup> However, along with Telehealth, Teledermatology has some limitations such as inadequate technical infrastructure, unequal reimbursement, and legal problems causing the delay of progress.<sup>38,39</sup>

In conclusion, this study provides an evaluation of public interests for skincare during this COVID-19 pandemic. The Google Trend analysis showed a significant increment in the public interest which could happen due to the lockdown restriction measures. The increment in public interests suggests the necessity of online contribution for skincare treatment. Since access to dermatologist care during lockdowns are scarce and limited in most countries, the increasing public search interests in skin care also suggests the need for additional and urgent medical care for untreated dermatological conditions. Finally, the analysis of Google Trends and the correlation between the COVID-19 pandemic and public interests for skincare can be helpful for the dermatologists to analyze the present situation.

### **Limitation**

This study has some limitations. First, people who don't have access to the internet excluded from this study which could bring significant change to Google Trends. However, since approximately 60% of the world population (4.57 billion people) are actively using the internet, it can be inferred that this population might be sufficient for skin disease patient's surveillance.<sup>40</sup> Second, this study



was done only based on one search engine (Google Search Engine), the other popular search engines like Baidu in China, and Yandex in Russia can give a better estimation for public interests.<sup>41,42</sup> Third, Google Trends ignores typographical error in the query terms which could also change the trend, especially, people with fewer skills could be excluded from this study for such a case. Finally, the COVID-19 cases and deaths are changing every day so at the time of doing this research, Google Trends can change significantly. In addition, countries around the world are now reopening some of their imposed restriction measures which might also bring some significant change in Google Trends.<sup>43</sup> Further research is needed to explore the actual scenario causing the increase of public interest for skincare treatment.

## Conflicts of Interest

There is no conflict of interest.

## References

1. Majumdar P, Biswas A, Sahu S. COVID-19 pandemic and lockdown: cause of sleep disruption, depression, somatic pain, and increased screen exposure of office workers and students of India. *Chronobiol Int*. 2020;00(00):1-10.
2. Pikoos TD, Buzwell S, Sharp G, Rossell SL. The COVID-19 pandemic: Psychological and behavioral responses to the shutdown of the beauty industry. *Int J Eat Disord*. 2020;(July):1-10.
3. Turkmen D, Altunisik N, Sener S, Colak C. Evaluation of the effects of COVID-19 pandemic on hair diseases through a web-based questionnaire. *Dermatol Ther*. 2020;(June).
4. Eysenbach G. Infodemiology and infoveillance: framework for an emerging set of public health informatics methods to analyze search, communication and publication behavior on the Internet. *J Med Internet Res*. 2009;11(1):1-10.
5. Ginsberg J, Mohebbi MH, Patel RS, Brammer L, Smolinski MS, Brilliant L. Detecting influenza epidemics using search engine query data. *Nature*. 2009;457(7232):1012-1014.
6. Huang J, Zheng R, Emery S. Assessing the Impact of the National Smoking Ban in Indoor Public Places in China: Evidence from Quit Smoking Related Online Searches. *PLoS One*. 2013;8(6).
7. Stevens R, Bonett S, Bannon J, et al. Association between HIV-related tweets and HIV incidence in the United States: Infodemiology study. *J Med Internet Res*. 2020;22(6):1-10.
8. Brigo F, Lochner P, Tezzon F, Nardone R. Web search behavior for multiple sclerosis: An infodemiological study. *Mult Scler Relat Disord*. 2014;3(4):440-443.
9. Effenberger M, Kronbichler A, Shin J Il, Mayer G, Tilg H, Perco P. Association of the COVID-19 pandemic with Internet Search Volumes: A Google Trends™ Analysis. *Int J Infect Dis*. Published online 2020.
10. Walker A, Hopkins C, Surda P. Use of Google Trends to investigate loss-of-smell-related searches during the COVID-19 outbreak. *Int Forum Allergy Rhinol*. 2020;10(7):839-847.
11. Sofi-Mahmudi A, Shamsoddin E, Ghasemi P, Bahar AM, Azad MS, Sadeghi G. The association between lockdown due to COVID-19 epidemic and searches for toothache using Google Trends in Iran. *medRxiv*. Published online 2020:2020.08.06.20160515.
12. Spiegelman J, Krenitsky N, Syeda S, Sutton D, Moroz L. Rapid Development and Implementation

- of a Covid-19 Telehealth Clinic for Obstetric Patients. Published online 2020.
13. Symum H, Mohammed K. Monitoring COVID-19 related public Interest and population Health Literacy in South Asia: An Internet Search-Interest Based Model. *medRxiv*. 2020;(2):2020.08.24.20180943.
  14. C. Heerfordt IMH. Has there been an increased interest in smoking cessation during the first months of the COVID-19 pandemic? A Google Trends study. 2020;(January).
  15. Lin Y, Liu C, Chiu Y. Google searches for the keywords of “wash hands” predict the speed of national spread of COVID-19 outbreak among 21 countries. 2020;(January):19-22.
  16. Kutlu Ö. Analysis of dermatologic conditions in Turkey and Italy by using Google Trends analysis in the era of the COVID-19 pandemic. *Dermatol Ther*. 2020;(July):1-6.
  17. COVID-19 Data Repository by the Center for Systems Science and Engineering (CSSE). Johns Hopkins University. Published 2020. Accessed August 8, 2020. <https://github.com/CSSEGISandData/COVID-19>
  18. Unemployment Insurance Weekly Claims Data. United States Department of Labor. Accessed April 8, 2020. <https://oui.doleta.gov/unemploy/claims.asp>
  19. Annual Measures Report. United Health Foundation. Accessed April 8, 2020. <https://www.americashealthrankings.org/explore/annual/measure/Immunize/state/ALL>
  20. Hudson J, Fielding S, Ramsay CR. Methodology and reporting characteristics of studies using interrupted time series design in healthcare. *BMC Med Res Methodol*. 2019;19(1):1-7.
  21. Ewusie JE, Soobiah C, Blondal E, Beyene J, Thabane L, Hamid JS. Methods, applications and challenges in the analysis of interrupted time series data: A scoping review. *J Multidiscip Healthc*. 2020;13:411-423.
  22. Jabaley CS, Blum JM, Groff RF, O’Reilly-Shah VN. Global trends in the awareness of sepsis: Insights from search engine data between 2012 and 2017. *Crit Care*. 2018;22(1):7.
  23. Troelstra SA, Bosdriesz JR, de Boer MR, Kunst AE. Effect of Tobacco Control Policies on Information Seeking for Smoking Cessation in the Netherlands: A Google Trends Study. Shahab L, ed. *PLoS One*. 2016;11(2):e0148489.
  24. Box G, Jenkins G, Reinsel G, Ljung G. *Time Series Analysis: Forecasting and Control*.; 2015.
  25. Bode B, Garrett V, Messler J, et al. Glycemic Characteristics and Clinical Outcomes of COVID-19 Patients Hospitalized in the United States. *J Diabetes Sci Technol*. 2020;14(4):813-821.
  26. Tai DBG, Shah A, Doubeni CA, Sia IG, Wieland ML. The Disproportionate Impact of COVID-19 on Racial and Ethnic Minorities in the United States. *Clin Infect Dis*. 2020;(Xx Xxxx):1-4.
  27. Morray BH, Gordon BM, Crystal MA, et al. Resource Allocation and Decision Making for Pediatric and Congenital Cardiac Catheterization During the Novel Coronavirus SARS-CoV-2 (COVID-19) Pandemic: A U.S. Multi-Institutional Perspective. *J Invasive Cardiol*. 2020;32(5):E103-E109.
  28. Litchman GH, Rigel DS. The immediate impact of COVID-19 on US dermatology practices. *J Am Acad Dermatol*. 2020;83(2):685-686.
  29. Pierce M, Hope H, Ford T, et al. Mental health before and during the COVID-19 pandemic: a longitudinal probability sample survey of the UK population. *The Lancet Psychiatry*. 2020;7(10):883-892.

30. Gironi LC, Boggio P, Giorgione R, Damiani G, Savoia P. The impact of COVID-19 pandemics on dermatologic surgery: real-life data from the Italian Red-Zone. *J Dermatolog Treat.* 2020;0(0):1-7.
31. Wosik J, Fudim M, Cameron B, et al. Telehealth transformation: COVID-19 and the rise of virtual care. *J Am Med Informatics Assoc.* 2020;27(6):957-962.
32. Smith AC, Thomas E, Snoswell CL, et al. Telehealth for global emergencies: Implications for coronavirus disease 2019 (COVID-19). *J Telemed Telecare.* 2020;26(5):309-313.
33. Zhou X, Snoswell CL, Harding LE, et al. The Role of Telehealth in Reducing the Mental Health Burden from COVID-19. *Telemed e-Health.* 2020;26(4):377-379.
34. Aziz A, Zork N, Aubey JJ, et al. Telehealth for High-Risk Pregnancies in the Setting of the COVID-19 Pandemic. *Am J Perinatol.* 2020;37(8):800-808.
35. Hakim AA, Kellish AS, Atabek U, Spitz FR, Hong YK. Implications for the use of telehealth in surgical patients during the COVID-19 pandemic. *Am J Surg.* 2020;220(1):48-49.
36. Gupta R, Ibraheem MK, Doan HQ. Teledermatology in the wake of COVID-19: Advantages and challenges to continued care in a time of disarray. *J Am Acad Dermatol.* 2020;83(1):168-169.
37. Vaidya T, Zubritsky L, Alikhan A, Housholder A. Socioeconomic and geographic barriers to dermatology care in urban and rural US populations. *J Am Acad Dermatol.* 2018;78(2):406-408.
38. Bull TP, Dewar AR, Malvey DM, Szalma JL. Considerations for the Telehealth Systems of Tomorrow: An Analysis of Student Perceptions of Telehealth Technologies. *JMIR Med Educ.* 2016;2(2):e11.
39. Wang RH, Barbieri JS, Nguyen HP, et al. Clinical effectiveness and cost-effectiveness of teledermatology: Where are we now, and what are the barriers to adoption? *J Am Acad Dermatol.* 2020;83(1):299-307.
40. Dreher PC, Tong C, Ghiraldi E, Friedlander JI. Use of Google Trends to Track Online Behavior and Interest in Kidney Stone Surgery. *Urology.* 2018;121:74-78.
41. Noar SM, Ribisl KM, Althouse BM, Willoughby JF, Ayers JW. Using digital surveillance to examine the impact of public figure pancreatic cancer announcements on media and search query outcomes. *J Natl Cancer Inst - Monogr.* 2013;44(47):188-194.
42. Liu K, Wang T, Yang Z, et al. Using Baidu Search Index to Predict Dengue Outbreak in China. *Sci Rep.* 2016;6(November):1-9.
43. Stein-Zamir C, Abramson N, Shoob H, et al. A large COVID-19 outbreak in a high school 10 days after schools' reopening, Israel, May 2020. *Eurosurveillance.* 2020;25(29):1-5.

**Supplementary Table 1. Characteristics of the individual countries during COVID-19 pandemic**

Country	Confirmed Cases (/100000)	COVID-19 Death (/100000)	Lockdown Start (Date)	Lockdown End (Date)	Lockdown Duration (Days)	Internet Usage (%)	Skin Death (/100000)	Lockdown Style
Argentina	6389	125	20-Mar	15-Aug	149	75.81	3.38	National
Belgium	6650	856	18-Mar	4-May	48	87.68	0.94	State
Brazil	15595	504	17-Mar	10-May	55	71.86	2.48	National
Canada	3226	239	17-Mar	4-May	49	92.7	0.59	State
Chile	20061	543	19-Mar	15-Aug	150	82.33	1.51	City
Colombia	8964	291	25-Mar	30-Jun	98	62.26	3.06	National
Dominican Republic	7876	132	20-Mar	15-Aug	149	64.99	0.51	National
Ecuador	5696	343	15-Mar	31-Mar	17	57.27	1.27	National
France	3301	466	17-Mar	11-May	56	80.5	0.58	National
Germany	2678	111	23-Mar	10-May	49	86	0.63	National
Italy	4192	585	9-Mar	28-May	81	61.3	0.55	National
Kuwait	17694	116	14-Mar	29-Mar	16	98	0.35	National
Mexico	3961	433	23-Mar	1-Jun	71	63.82	2.19	National
Netherlands	3646	360	13-Mar	15-Aug	156	93.2	0.58	National
Oman	16191	110	10-Apr	29-May	50	80.19	3.37	National
Panama	18368	401	25-Mar	15-Aug	144	57.87	2.37	National
Portugal	5296	174	19-Mar	2-Apr	15	73.79	0.43	National
Romania	3609	154	25-Mar	12-May	49	63.75	0.26	National
Russia	6289	107	28-Mar	12-May	46	76.01	0.73	City
South Africa	9826	197	26-sMar	30-Apr	36	56.17	4.52	National
Spain	7675	612	14-Mar	9-May	57	84.6	0.96	National
UK	4672	609	23-Mar	4-Jul	104	94.62	1.2	National
USA	16694	521	19-Mar	10-Jun	85	75.23	0.9	State