

1 The occurrence of cardiovascular complications 2 associated with SARS-CoV-2 infection: a systematic 3 review

4 Daniele Melo Sardinha^{1*}, Karla Valéria Batista Lima^{2,3}, Thalyta Mariany Rêgo Lopes Ueno², Yan
5 Correa Rodrigues^{2,3}, Juliana Conceição Dias Garcez², Anderson Lineu Siqueira dos Santos^{2,3}, Ana
6 Lúcia da Silva Ferreira⁴, Ricardo José de Paula Souza e Guimarães^{1,5}, Luana Nepomuceno Gondim
7 Costa Lima^{1,2,3}

8 ¹ Programa de Pós-Graduação em Epidemiologia e Vigilância em Saúde (PPGEVS), Instituto Evandro Chagas
9 (IEC), Ananindeua 67030-000, Brazil; danielle-vianna20@hotmail.com; ricardoguimaraes@iec.gov.br;
10 luanalima@iec.gov.br.

11 ² Programa de Pós-Graduação em Biologia Parasitária na Amazônica (PPGBPA), Instituto Evandro Chagas
12 (IEC) e Universidade do Estado do Pará (UEPA), Belém 66087-670, Brazil; karlalima@iec.gov.br;
13 thalyta_mlopes@hotmail.com; Yan.13@hotmail.com; juliana.garcez@famaz.edu.br;
14 andersonlineu@gmail.com.

15 ³ Seção de Bacteriologia e Micologia (SABMI), Instituto Evandro Chagas (IEC), Ananindeua 67030-000, Brazil.

16 ⁴ Secretaria de Estado de Saúde Pública do Pará (SESPA), Belém, 66017-000, Brazil;
17 analucia.ferreira@sespa.pa.gov.br.

18 ⁵ Laboratório de Geoprocessamento, Instituto Evandro Chagas (IEC), Ananindeua 67030-000, Brazil;

19 * Correspondence: danielle-vianna20@hotmail.com; Tel.: +55 91998188790 (DMS)

20 **Abstract:** The Cardiovascular Diseases represent the main cause of death in the world, and are
21 associated as risk factors that cause serious complications in cases of infections, such as those of the
22 respiratory tract. In March 2020 the World Health Organization declared a pandemic for
23 SARS-CoV-2, a new coronavirus causing severe pneumonia, which emerged in December 2019 in
24 Wuhan, China. The objective is to investigate the occurrence of cardiovascular complications
25 associated with SARS-CoV-2 infection. It is a systematic review, quantitative, in the databases,
26 PubMed and Science direct, including primary studies with hospitalized patients confirmed for
27 COVID-19 and who presented cardiovascular complications, form used tools for evaluation of
28 quality and evidence, following the PRISMA recommendations. Results: 12 studies were included.
29 The occurrence of cardiovascular complications was: 27.35% of the sample of 3,316 patients. Types:
30 Acute cardiac injury 17.09%; Thromboembolism 4.73%; Heart failure 3.43%; Arrhythmias 1.77%;
31 Brain stroke 0.33%. Mean age 61 years. Conclusions: This study showed that there are several
32 cardiovascular complications associated with SARS-CoV-2, that the main one is the acute cardiac
33 injury, which causes several instabilities in the cardiopulmonary system, and that it is associated
34 with mortality.

35 **Keywords:** Cardiovascular Complications; COVID-19; SARS-CoV-2.

37 1. Introduction

38 The Cardiovascular Diseases (CD) are a set of pathological conditions involving the
39 cardiovascular system, such as: Coronary Arterial Disease (CAD), Cardiac Arrhythmias,
40 Valvopathy, Inflammatory Heart Disease, Heart Failure (HF), Vascular Brain Injury (VBI),
41 Pulmonary Embolism (PE), and Deep Venous Thrombosis (DVT). However, some risk factors,
42 modifiable and non-modifiable, potentiate or cause cardiovascular events, among them: Systemic
43 Arterial Hypertension (SAH), Diabetes Mellitus (DM), Dyslipidemias, Sedentarism, Obesity, Stress,
44 Hormone replacement therapy, Smoking, Family history of CD, Sex, Age and Heredity[1,2].

45 Thus, CD represents a major public health problem, since it is the leading cause of death,
46 accounting for 17.7 million deaths worldwide in 2015, representing 31% of all deaths globally. The
47 main cause of deaths is CAD [3,4].

48 In this context, previous research has shown a transient risk of acute vascular events, including
49 myocardial infarction and cardiovascular deaths, after clinically diagnosed Acute Respiratory
50 Infections (ARI). Influenza vaccine has been shown to minimize the risk of major adverse cardiac
51 events among people with pre-existing cardiovascular disease. Studies have shown that influenza
52 epidemics are associated with cardiovascular mortality in subtropical and tropical climates. Thus,
53 seasonal mortality from all causes, specifically in the elderly, has been associated with several
54 viruses, including influenza, parainfluenza, RSV and norovirus. A Dutch study suggests that these
55 viruses account for 6.8% of deaths in people aged ≥ 85 , 4.4% in people aged 75-84, and 1.4% in people
56 aged 65-74. The impact of viral respiratory infections on the cardiovascular system causing fatal
57 events is thus evident[5,6].

58 In this sense, in December 2019, cases of influenza syndrome with evolution to ARI, of
59 unknown etiology, were registered in China and caused concern because of the several deaths and
60 rapid transmissibility. In January researchers isolated and identified the causative infectious agent as
61 a Coronavirus, named at the time 2019-nCov, however, due to the similarity to SARS-CoV, another
62 coronavirus causing ARI in humans, was renamed by the World Health Organization (WHO) as
63 SARS-CoV-2, and respectively the disease was named Cov Disease-19 (COVID-19)[7-9].

64 Soon, COVID-19, due to the high transmissibility via respiratory droplets, in a direct and
65 indirect way, spread to neighboring countries, and reached the level of the pandemic in March 2020
66 declared by the WHO[10].

67 According to the studies, the clinical characteristics of COVID-19 have shown to evolve in three
68 ways: Flu Syndrome (FS), Severe Acute Respiratory Syndrome (SARS) and Asymptomatic. In the FS
69 it refers to the presentation of fever, cough, sore throat, coryza, nasal congestion and myalgia. In
70 SARS, signs and symptoms of FS are associated with oxygen saturation equal to or $< 95\%$, beating of
71 nose wings, diarrhea, nausea, vomiting and cyanosis. The cases of SARS represent the serious
72 complications of COVID-19, requiring intensive care treatment and being responsible for several
73 deaths. The following risk factors stand out for the evolution of SARS: chronic heart diseases,
74 chronic respiratory diseases, neoplasms, elderly, pregnant women, obese people[11-13].

75 In a review study, several cardiovascular complications associated with SARS-CoV-2 infection
76 were cited[14]. However, studies do not specify the most frequent and prevalent associated
77 complications, so it was questioned: What is the occurrence of cardiovascular complications
78 associated with SARS-CoV-2 infection? The objective of this research is to investigate the occurrence
79 of cardiovascular complications associated with SARS-CoV-2 infection.

80 2. Materials and Methods

81 Exploratory-descriptive research, of the type Systematic Review (SR), following the PRISMA
82 recommendations [15]. The SR is made up of five stages: 1. formulating a research question; 2.
83 defining inclusion and exclusion criteria; 3. developing a research strategy and researching the
84 literature - finding the studies; 4. selecting the studies; 5. evaluating the quality of the studies; 6.
85 extracting the data; 7. summarizing the data and evaluating the quality of the evidence;[16].

86 For the elaboration of the research question, we used the PICO strategy, widely used in
87 evidence-based practice, in which it proposes that problems identified in clinical practice, research
88 and teaching be organized from four elements: Patient; Intervention; Comparison; Outcome (PICO).
89 Because the construction from these elements, provides greater scope for the resolution of the
90 problem addressed [17].

91 Research question: What is the occurrence of cardiovascular complications associated with
92 SARS-CoV-2 infection cited in the literature? Patient: Infected with SARS-CoV-2 of any age group,
93 hospitalized / Intervention: identify the cardiovascular complications associated with SARS-CoV-2 /
94 Comparison: Not applicable / Outcome: Describe the occurrence of cardiovascular complications
95 associated with SARS-CoV-2 cited in the literature.

96 For the search strategy in the literature, the following keywords were listed: cardiovascular
97 complications; COVID-19; SARS-CoV-2. The selected databases were: PubMed, Science direct,
98 including studies of any language, published from 2019 until the date of the search 11/07/2020.

99 Inclusion criteria: primary studies, which evaluated individuals infected by SARS-CoV-2
100 hospitalized and presented results on cardiovascular complications, of all age groups. Exclusion
101 criteria: studies that do not specify the cardiovascular complications that occurred quantitatively.

102 The PRISMA flowchart, a tool that is part of the PRISMA protocol, was used to visualize the
103 search in the databases, showing how the final sample was reached, describing all the stages and
104 inclusion and exclusion [15].

105 According to the protocol, two reviewers researched the bases independently, and critically
106 evaluated each study from exhaustive reading in two stages, sorting by titles and abstracts/complete
107 text. They then met twice to discuss the evaluations and decided which studies were included in the
108 research.

109 The U.S. National Institutes of Health's Quality Assessment Tool for Observational Cohort and
110 Cross-Sectional Studies was used to assess the quality of studies
111 (<https://www.nhlbi.nih.gov/health-topics/study-quality-assessment-tools>) It consists of 14 questions
112 that measure the representativeness, the type of sampling, the description and evaluation of the
113 exposure, the participants' overbite and the adjustments and qualifications of the confounding
114 variables. The results were discussed qualitatively among the researchers, and the disparities were
115 solved through the discussion.

116 In the evaluation of the quality of evidence, the Oxford Centre for Evidence-Based Medicine's
117 Quality Classification Scheme was used for studies and other evidence [18], which is based on levels
118 1 to 5:

- 119 1- Randomized clinical trial properly fed and conducted; systematic review with meta-analysis.
- 120 2- Well designed controlled trial without randomization; comparative prospective cohort study.
- 121 3- Case control studies; retrospective cohort study.
- 122 4- Series of cases with or without intervention; transversal study.
- 123 5- Opinion of respected authorities; case reports.

124 When extracting the data, the researchers developed a form consisting of the following
125 variables: authors and year of publication, method, quality of evidence, location, age, participants,
126 gender, comorbidities, estimates of occurrence of cardiovascular complications evidenced in those
127 infected by SARS-CoV-2. For data analysis, we opted for descriptive statistics, chi-square test of
128 independence applied in the participants with the complications, to observe the most significant
129 complications. The results were presented in tables.

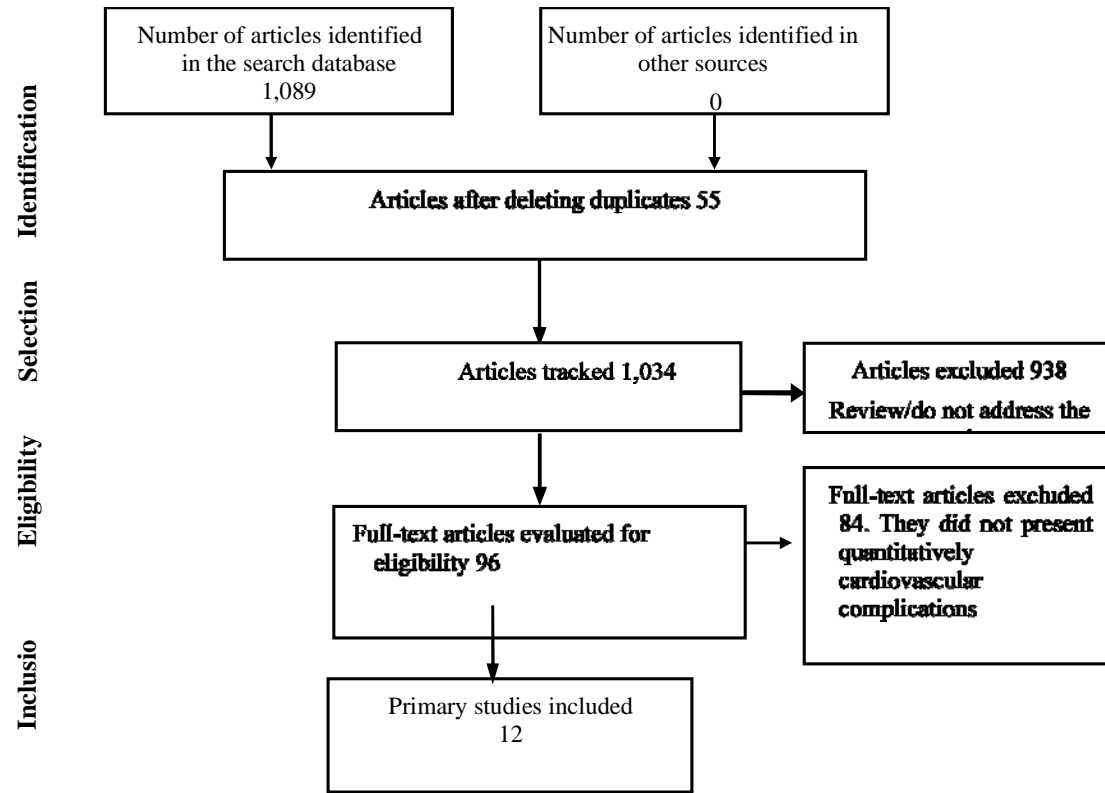
130 3. Results

131 In PubMed, the initial search resulted in 294 articles, after the analysis by title and objective, 46
132 were selected for reading. 7 articles were included for the data analysis [19], [20], [21], [22], [23], [24],
133 [25]. In Science direct, 795 articles were initially searched, applying the filter for primary articles only
134 resulted in 257. 45 were selected, and after reading 5, [26], [27], [28], [29], [30]. In figure 1 is the
135 flowchart of the search, and in table 1 the detailing of the variables extracted from the studies.

136

137 **Figure 1** - Characterization of the search and definition of the sample in the databases.

138



139

140 Source: Authors.

141

Table 1. Data extracted from the studies included in the review.

First author and year	Metodo	Quality of evidence	Location/sample	Age	Sex	Comorbidities	The occurrence and cardiovascular complications
Li et al (2020).	Retrospective study with patients Hospitalized	3	China 548	Average 60 years (range 48-69)	Male 279 (50,9%) Female 269 (49,1%)	Chronic obstructive pulmonary disease 17 (3.1%) Asthma 5 (0.9%) Tuberculosis (1.6%) Diabetes 83 (15.1%) Hypertension 166 (30.3%) Coronary heart disease 34 (6.2%) Hepatitis B 5 (0.9%) Chronic kidney disease 10 (1.8%) Tumor 24 (4.7%)	Cardiac injury 119 (21.7%). Diffuse intravascular coagulation 42 (7.7%).
Wang et al (2020).	Retrospective cohort in one hospital, all confirmed cases of COVID-19 over 60 years of age	3	China 339	Average 71 years (> 60)	Male 166 (49%) Female 173 (51%)	Heart Disease 53 (15.7%) Hypertension 138 (40.8%) Diabetes 54 (16%) Kidney Disease 13 (3.8%) Chronic Liver Disease 2 (0.6%) Pneumopathy 21 (6.2%) Autoimmune disease 5 (1.5%).	Acute cardiac injury 70 (21.0%) Arrhythmia 35 (10.4%) Heart failure 58 (17.4%)
Inciardi et al (2020).	Retrospective cohort with hospitalized patients	3	Italy 99	Average 67	Male 80 (81%) Female 19 (19%)	Hypertension 63 (64%) Dyslipidemia 29 (30%) Diabetes 30 (31%) Heart failure 21 (21%) Atrial fibrillation 19 (19%) Coronary artery disease 16 (16%)	Venous thromboembolism 12 (12%) Arterial thromboembolism 3 (3%)

						Chronic obstructive pulmonary disease 9 (9%) Chronic kidney disease 15 (15%) Cancer 17 (18%)	
Shi et al (2020a).	Retrospective study with hospitalized patients	3	China 671	Median 63 (50–72)	Male 322 (48%) Female 349 (52%)	Hypertension 199 (29.7%) Diabetes 97 (14.5%) Coronary heart disease 60 (8.9%) Chronic kidney disease 28 (4.2%) Chronic obstructive pulmonary disease 23 (3.4%) Cancer 23 (3.4%) Heart Failure 22 (3.3%) Cerebrovascular disease 22 (3.3%) Atrial fibrillation 7 (1.0%)	Myocardial injury 106 (15.8%) Heart Failure 12
Li et al (2020).	Retrospective observational study of hospitalized patients	3	China 219	Median 53	Male 89 (39.7%) Female 130 (60,3%)	Hypertension 55 (25.1%) Diabetes 31 (14.2%) Heart disease 17 (7,8%)	Stroke 11 (5%)
Shi et al (2020b).	Cohort with hospitalized	3	China 416	Median 64 (21-95)	Male 205 (49,3%) Female 211 (50,7%)	Hypertension 127 (30.5%) Diabetes 60 (14.4%) Coronary heart disease 44 (10.6%) Cerebrovascular disease 22 (5.3%) Heart Failure 17 (4.1%) Chronic renal failure 14 (3.4%)	Cardiac Injury 82 (19,7%).

						Chronic obstructive pulmonary disease 12 (2.9%) Cancer 9 (2.2%)	
Guo et al (2020).	Series of hospitalized cases	3	China 187	Average 58 (14-66)	Male 91 (48.7%) Female 96 (51.3%)	Hypertension 61 (32.6%) Coronary Heart Disease 21 (11.2%) Cardiomyopathy 8 (4.3%) Diabetes 28 (15.0%) Chronic obstructive pulmonary disease 4 (2.1%) Malignancy 13 (7.0%) Chronic kidney disease 6 (3.2%)	Myocardial injury 52 (27.8%) Coagulopathy 42 (34.1%)
Yang et al (2020).	Observational study of hospitalized patients	3	China 200	Average 55	Male 98 (49%) Female 102 (51%)	Hypertension 45 (22.5%) Chronic lung disease 7 (3.5%) Diabetes 21 (10.5%) Chronic heart disease 11 (5.5%) Chronic kidney disease 3 (1.5%) Chronic liver disease 2 (1%)	Acute cardiac injury 20 (10%)
Zhou et al (2020).	Retrospective and multicenter cohort study, with hospitalized	3	China 191	Average 56 (18-87)	Male 119 (62%) Female 72 (38%)	Hypertension 58 (30%) Diabetes 36 (19%) Coronary heart disease 15 (8%) Chronic obstructive pulmonary disease 6 (3%) Carcinoma 2 (1%)	Heart failure 44 (23%) Coagulopathy 37 (19%) Acute cardiac injury 33 (17%)
Zhang et al (2020).	Retrospective study with hospitalized	3	China 221	Average 55 (39-66)	Male 108 (48.9%) Female 113 (51.1%)	Hypertension 54 (24.4%) Diabetes 22 (10.0%) Cardiovascular disease 22 (10.0%) Cerebrovascular disease 15 (6.8%)	Arrhythmia 24 (10.9%) Acute cardiac injury 17 (7.7%)

						Chronic obstructive pulmonary disease 6 (2.7%) Chronic kidney disease 6 (2.7%) Chronic liver disease 7 (3.2%) Immunosuppression 3 (1.4%)	
Shang et al (2020).	Retrospective cohort study with severe hospitalized	3	China 113	Median 66	Male 73 (64%) Female 40 (36%)	Hypertension 50 (44%) Diabetes 20 (17.7%) Coronary heart disease 28 (24.8%) Chronic obstructive pulmonary disease 5 (4%) Tumor 8 (7.1%) Heart disease 9 (8.0%) Liver disease 8 (7.1%)	Acute myocardial injury 44 (38.9%) Coagulopathy 21 (18.6%)
Deng et al (2020).	Retrospective with hospitalized	3	China 112	Average 65 (49-60)	Male 57 (50.9%) Female 55 (49.1%)	Chronic obstructive pulmonary disease 4 (3.6%) Hypertension 36 (32.1%) Diabetes 19 (17.0%) Coronary artery disease 15 (13.4%) Atrial fibrillation 4 (3.6%)	Myocardial injury 14 (12.5%)

Source: Authors.

143 Based on the analysis of the included studies and the extracted variables, the review gathered
 144 3,316 participants of the studies who were hospitalized, 50.87% male and 49.12% female, mean age
 145 61 years, 13.08% with heart diseases (heart failure and coronary disease were included in heart
 146 diseases), 15.10% diabetes, 31.72% hypertension, 3.5% pneumopathy (obstructive pulmonary disease
 147 was included in pneumopathy), 3.13% renal diseases, 2.89% cancer, 0.09% immunosuppression,
 148 0.57% liver disease, 0.15% autoimmune disease and 0.27% tuberculosis. This shows the most
 149 frequent comorbidities are: Hypertension, Diabetes and Cardiac Diseases (table 2).

150 **Table 2 - Characteristics of participants, gender, mean age and comorbidities.**

	Yes		No		Total	
	n	%	n	%	n	%
Female	1629	49,12545	1687	50,87455	3316	100
Male	1687	50,87455	1629	49,12545	3316	100
Age (average) 61 years					3316	100
Heart disease	434	13,08806	2882	86,91194	3316	100
Diabetes	501	15,10856	2815	84,89144	3316	100
Hypertension	1052	31,72497	2264	68,27503	3316	100
Pneumopathy	119	3,588661	3197	96,41134	3316	100
Chronic kidney disease	104	3,136309	3212	96,86369	3316	100
Cancer	96	2,895054	3220	97,10495	3316	100
Immunosuppression	3	0,09047	3313	99,90953	3316	100
Liver disease	19	0,572979	3297	99,42702	3316	100
Autoimmune disease	5	0,150784	3311	99,84922	3316	100
Tuberculosis	9	0,271411	3307	99,72859	3316	100

151 Source: Authors.

152 Regarding the occurrence of cardiovascular complications associated with the SARS-CoV-2
 153 infection, the following were highlighted: acute cardiac injury 17.09%, thromboembolism 4.73%,
 154 heart failure 3.43%, arrhythmias 1.77%, and stroke 0.33% (Table 3).

155 **Table 3 - Occurrence of cardiovascular complications associated with SARS-CoV-2.**

	Yes		No		Total		P-value
	n	%	n	%	n	%	
General complications	908	27,35%	2408	72,65%	3316	100	< 0.0001
Types							
Cardiac injury	567	17,09891	2749	82,90109	3316	100	
Thromboembolism	157	4,73462	3159	95,26538	3316	100	
Heart failure	114	3,437877	3202	96,56212	3316	100	<0.0001*
Arrhythmias	59	1,779252	3257	98,22075	3316	100	
Stroke	11	0,331725	3305	99,66828	3316	100	

156 Source: Authors. * Chi-square: independence test.

157 4. Discussion

158 Infection with SARS-CoV-2 may manifest with mild symptoms (85%) and severe symptoms
159 (15%) (such as progression to SARS) with the potential to cause extrapulmonary damage, including
160 cardiovascular damage that directly influences morbidity and mortality [31].

161 Thus, this study showed, from the analysis of studies with 3,316 hospitalized patients
162 confirmed for COVID-19, that the occurrence of cardiovascular complications associated with
163 SARS-CoV-2 was 27.35% of the following types: Acute cardiac injury 17.09%; Thromboembolism
164 4.73%; Heart failure 3.43%; Arrhythmias 1.77%; Brain stroke 0,33%.

165 Acute cardiac injury was the most recurrent, and two meta-analysis studies showed its juto
166 association with increased troponin and mortality, showing no association of the cardiac injury with
167 higher risk of developing SARS. The studies highlight that early troponin monitoring is a preventive
168 strategy for further myocardial injury[32,33]. This mechanism of injury is not yet clear to
169 cardiologists, however, they work with hypotheses of viral invasion in the myocardium, similar to
170 pulmonary invasion, via the connection of SARS-CoV-2 to the Angiotensin Converting Enzyme 2
171 (ACE2), which is extensively present in the myocardium. Additionally, pneumonia can influence
172 through systemic inflammatory responses, causing non-ischemic complications in the myocardium,
173 mainly in the presence of cardiovascular comorbidities. It is also noted that the increased
174 inflammatory activity is a risk factor for the rupture of coronary atherosclerotic plaques, which can
175 cause the partial or total blockage of coronary arteries, causing myocardial ischemia and
176 consequently hypoxia injury, characterizing Acute Myocardial Infarction. Causes of
177 cardiomyopathy due to stress, physical injury, or pharmacological effects were not excluded.[34,35].

178 Research characterizes that the occurrence of acute cardiac injury is highly related to the
179 presence of cardiovascular comorbidities (such as hypertension and diabetes), admission to an
180 Intensive Care Unit and mortality. They highlight as a characteristic the increase of troponin type I
181 associated with electrocardiographic and echocardiographic alterations, presenting segmental
182 abnormality of the wall movement or reduction of the left ventricle ejection fraction [36]. Thus, the
183 clinical presentation of the acute cardiac lesion may manifest as myocarditis or acute myocardial
184 infarction, with thoracic pain and ST-segment elevation, requiring percutaneous cardiac
185 procedure[37,38], which is an intervention that presents a risk of acute renal failure in hospitalized
186 patients with comorbidities, due to the use of contrasts, and can increase hospitalization and
187 mortality [39]. Showing that this complication requires procedures that can influence or enhance
188 clinical conditions for a worse outcome.

189 Thromboembolism was the second most recurrent cardiovascular complication, described in
190 the literature as Disseminated Intravascular Coagulation. In association with SARS-CoV-2, it is
191 related to a storm of inflammatory cytokines, directly attacking the vascular endothelium with
192 elevation of the fibrinogen and dimero-D markers (product of fibrin/fibrinogen degradation),
193 causing thrombin dysregulation, exacerbated by inhibition of fibrinolysis. Thus the natural
194 anticoagulants are compromised, resulting in the formation of thrombi, which can travel to a smaller
195 vessel and obstruct, causing hypoxia. Thromboses can be venous or arterial, and can evolve to Deep
196 Venous Thrombosis, Pulmonary Embolism, Ischemic Vascular Accident or acute myocardial
197 infarction. These are serious complications associated with mortality. In this context, the heparin
198 used in anticoagulant therapy was associated with better prognosis in some cases[40,41]. A study
199 with 184 patients hospitalized in an intensive care unit confirmed for COVID-19, showed an
200 incidence of 31% of thrombotic events, all received standard dose tromboprophylaxis[42]. Another
201 study with 388 patients hospitalized by COVID-19 with thrombotic events in 28 cases (7.7%), being 8
202 cases in intensive care unit and 20 cases in the infirmary, the complications represented: 4.4% venous
203 thromboembolism, 2.8% Pulmonary Embolism, 0.3% Deep Venous Thrombosis, 2.5% ischemic
204 stroke and 11.1% acute myocardial infarction and Acute Coronary Syndrome. All cases used
205 tromboprophylaxis[43]. This study also showed the occurrence of stroke alone as a complication in

206 0.33% of cases, however, it is directly associated with thromboembolism associated with
207 SARS-CoV-2, because the inflammatory response generates a hypercoagulable condition.

208 Heart failure represented the third cardiovascular complication, being a complex clinical
209 syndrome, in which the myocardium has inability to adequately pump the blood to meet the
210 metabolic needs of the tissues. This condition can be caused by structural or functional cardiac
211 changes and presents characteristic signs and symptoms that result from a reduction in cardiac
212 output and/or high filling pressures at rest or under stress[44]. Studies show that this complication
213 occurs in patients without heart disease, mainly as a consequence of acute heart injury, since the
214 damage to the myocardium has repercussions on its ventricular contraction function, resulting in a
215 reduction in systolic function. Additionally, coagulopathies can cause pulmonary embolism and
216 have repercussions in acute right ventricular failure. In addition, stress cardiomyopathy can also
217 lead to classic ventricular decompensation, with high filling pressures and pulmonary edema. On
218 the other hand, in the carrier of chronic heart failure, there is a great chance of decompensation of the
219 disease, requiring hospitalization and intensive care, influencing mortality[45,46].

220 Another outstanding complication was cardiac arrhythmias, which are directly related to the
221 following factors: acute cardiac injury, heart failure, drugs that prolong the cQT interval. Atrial
222 fibrillation proved to be the most common type of arrhythmia, with the potential risk of thrombus
223 formation, acute myocardial infarction and ischemic stroke, and antithrombotic therapy is debatable
224 even in cases without risk factors. Arrhythmias are also related to higher risks of heart instability,
225 cardiac arrest and death[47].

226 This review showed that acute cardiac injury is the main cardiovascular complication
227 associated with SARS-CoV-2 infection, causing several instabilities in cardiopulmonary functions,
228 and also influencing other cardiovascular complications, in patients without chronic diseases and
229 with chronic diseases.

230 5. Conclusions

231 The main cardiovascular complications associated with SARS-CoV-2 in hospitalized patients
232 were several, among them: acute cardiac injury, thromboembolism, heart failure, arrhythmias and
233 ischemic stroke, with a mean age of 61 years, with the most prevalent comorbidities, hypertension,
234 diabetes and heart diseases.

235 The evidence on the association of cardiovascular complications and SARS-CoV-2 provides
236 information for the implementation of preventive measures and better therapeutic management,
237 with the objective of minimizing hospital stay, morbidity and mortality.

238 **Author Contributions:** D.M.S and K.V.B.L. conceived the study. D.M.S, K.V.B.L. and T.M.R.L.U. designed the
239 search strategy. D.M.S. conducted searching of databases. Y.C.R., D.M.S., J.C.D.G. and A.L da S.F. screened the
240 records. D.M.S and K.V.B.L. screened the full texts. A.L.S dos .S. completed all data extraction, and R.J. de P.S e
241 G and L.N.G.C.L. conducted quality checks. L.N.G.C.L. drafted the full manuscript, and all authors reviewed
242 and approved final submission. All authors have read and agreed to the published version of the manuscript

243 **Funding:** Conselho Nacional de Desenvolvimento Científico e Tecnológico (CNPQ). Coordenação de
244 Aperfeiçoamento de Pessoal de Nível Superior (CAPES). Instituto Evandro Chagas (IEC).

245 **Conflicts of Interest:** The authors declare no conflict of interest.

246 References

- 247 [1] Sardinha DM, Silva AGI da, Gomes SG, Pamplona FC, Gorayeb ALDS, Ferreira MFDC, et al.
248 Cardiovascular Risk Factors in Nurses Teachers. *Cardiol Angiol An Int J* 2020;9:9–17.
249 <https://doi.org/10.9734/ca/2020/v9i130125>.
- 250 [2] Costa GF, Sardinha DM, Oliveira VMLP, Barata FS, Silva PHV da, Mafra INP, et al. Nursing Care for
251 Patients Submitted to Coronary Transluminal Angioplasty: An Integrative Review. *Cardiol Angiol An Int*
252 *J* 2020;9:18–26. <https://doi.org/10.9734/ca/2020/v9i130126>.
- 253 [3] Massa KHC, Duarte YAO, Chiavegatto Filho ADP. Análise da prevalência de doenças cardiovasculares e

- 254 fatores associados em idosos, 2000-2010. *Cien Saude Colet* 2019;24:105–14.
255 <https://doi.org/10.1590/1413-81232018241.02072017>.
- 256 [4] OMS OM da S. OPAS/OMS Brasil - Doenças cardiovasculares. PahoOrg 2017.
257 https://www.paho.org/bra/index.php?option=com_content&view=article&id=5253:doencas-cardiovasculares&Itemid=1096 (accessed July 11, 2020).
258
- 259 [5] Blackburn R, Zhao H, Pebody R, Hayward A, Warren-Gash C. Laboratory-Confirmed Respiratory
260 Infections as Predictors of Hospital Admission for Myocardial Infarction and Stroke: Time-Series Analysis
261 of English Data for 2004-2015. *Clin Infect Dis* 2018;67:8–17. <https://doi.org/10.1093/cid/cix1144>.
- 262 [6] Davidson JA, Warren-Gash C. Cardiovascular complications of acute respiratory infections: current
263 research and future directions. *Expert Rev Anti Infect Ther* 2019;17:939–42.
264 <https://doi.org/10.1080/14787210.2019.1689817>.
- 265 [7] Velavan TP, Meyer CG. The COVID-19 epidemic. *Trop Med Int Heal* 2020;25:278–80.
266 <https://doi.org/10.1111/tmi.13383>.
- 267 [8] Lima LNGC, De Sousa MS, Lima KVB. As descobertas genômicas do SARS-CoV-2 e suas implicações na
268 pandemia de COVID-19. *J Heal Biol Sci* 2020;8:1.
269 <https://doi.org/10.12662/2317-3076jhbs.v8i1.3232.p1-9.2020>.
- 270 [9] BULUT C, KATO Y. Epidemiology of COVID-19. *TURKISH J Med Sci* 2020;50:563–70.
271 <https://doi.org/10.3906/sag-2004-172>.
- 272 [10] Sun P, Lu X, Xu C, Sun W, Pan B. Understanding of COVID-19 based on current evidence. *J Med Virol*
273 2020;92:548–51. <https://doi.org/10.1002/jmv.25722>.
- 274 [11] Brasil M da S. Definição de Caso e Notificação. Portal Do Gov Bras 2020:1–9.
275 <https://coronavirus.saude.gov.br/definicao-de-caso-e-notificacao> (accessed July 4, 2020).
- 276 [12] Bastos LS, Niquini RP, Lana RM, Villela DAM, Cruz OG, Coelho FC, et al. COVID-19 e hospitalizações por
277 SRAG no Brasil: uma comparação até a 12ª semana epidemiológica de 2020. *Cad Saude Publica* 2020;36.
278 <https://doi.org/10.1590/0102-311x00070120>.
- 279 [13] Madabhavi I, Sarkar M, Kadakol N. COVID-19. A review. *Monaldi Arch Chest Dis* 2020;90.
280 <https://doi.org/10.4081/monaldi.2020.1298>.
- 281 [14] Martins JDN, Sardinha DM, Silva RR da, Lima KVB, Lima LNGC. As implicações da COVID-19 no sistema
282 cardiovascular: prognóstico e intercorrências. *J Heal Biol Sci* 2020;8:1.
283 <https://doi.org/10.12662/2317-3076jhbs.v8i1.3355.p1-9.2020>.
- 284 [15] Liberati A, Altman DG, Tetzlaff J, Mulrow C, Gøtzsche PC, Ioannidis JPA, et al. The PRISMA Statement
285 for Reporting Systematic Reviews and Meta-Analyses of Studies That Evaluate Health Care Interventions:
286 Explanation and Elaboration. *PLoS Med* 2009;6:e1000100. <https://doi.org/10.1371/journal.pmed.1000100>.
- 287 [16] Donato H, Donato M. Stages for undertaking a systematic review. *Acta Med Port* 2019;32:227–35.
288 <https://doi.org/10.20344/amp.11923>.
- 289 [17] Santos CMDC, Pimenta CADM, Nobre MRC. A estratégia PICO para a construção da pergunta de
290 pesquisa e busca de evidências. *Rev Latino-Am Enferm* 2007;15:508–11.
291 <https://doi.org/10.1590/S0104-11692007000300023>.
- 292 [18] Oxford Centre for Evidence-Based Medicine. Evaluation of the quality of evidence. CEBEM 2020.
293 <https://www.cebm.net/> (accessed September 18, 2020).
- 294 [19] Li X, Xu S, Yu M, Wang K, Tao Y, Zhou Y, et al. Risk factors for severity and mortality in adult COVID-19
295 inpatients in Wuhan. *J Allergy Clin Immunol* 2020;146:110–8. <https://doi.org/10.1016/j.jaci.2020.04.006>.
- 296 [20] Wang L, He W, Yu X, Hu D, Bao M, Liu H, et al. Coronavirus disease 2019 in elderly patients:

- 297 Characteristics and prognostic factors based on 4-week follow-up. *J Infect* 2020;80:639–45.
298 <https://doi.org/10.1016/j.jinf.2020.03.019>.
- 299 [21] Inciardi RM, Adamo M, Lupi L, Cani DS, Di Pasquale M, Tomasoni D, et al. Characteristics and outcomes
300 of patients hospitalized for COVID-19 and cardiac disease in Northern Italy. *Eur Heart J* 2020;41:1821–9.
301 <https://doi.org/10.1093/eurheartj/ehaa388>.
- 302 [22] Shi S, Qin M, Cai Y, Liu T, Shen B, Yang F, et al. Characteristics and clinical significance of myocardial
303 injury in patients with severe coronavirus disease 2019. *Eur Heart J* 2020;41:2070–9.
304 <https://doi.org/10.1093/eurheartj/ehaa408>.
- 305 [23] Li Y, Li M, Wang M, Zhou Y, Chang J, Xian Y, et al. Acute cerebrovascular disease following COVID-19: a
306 single center, retrospective, observational study. *Stroke Vasc Neurol* 2020.
307 <https://doi.org/10.1136/svn-2020-000431>.
- 308 [24] Shi S, Qin M, Shen B, Cai Y, Liu T, Yang F, et al. Association of Cardiac Injury With Mortality in
309 Hospitalized Patients With COVID-19 in Wuhan, China. *JAMA Cardiol* 2020;5:802.
310 <https://doi.org/10.1001/jamacardio.2020.0950>.
- 311 [25] Guo T, Fan Y, Chen M, Wu X, Zhang L, He T, et al. Cardiovascular Implications of Fatal Outcomes of
312 Patients With Coronavirus Disease 2019 (COVID-19). *JAMA Cardiol* 2020.
313 <https://doi.org/10.1001/jamacardio.2020.1017>.
- 314 [26] Yang L, Liu J, Zhang R, Li M, Li Z, Zhou X, et al. Epidemiological and clinical features of 200 hospitalized
315 patients with corona virus disease 2019 outside Wuhan, China: A descriptive study. *J Clin Virol*
316 2020;129:104475. <https://doi.org/10.1016/j.jcv.2020.104475>.
- 317 [27] Zhou F, Yu T, Du R, Fan G, Liu Y, Liu Z, et al. Clinical course and risk factors for mortality of adult
318 inpatients with COVID-19 in Wuhan, China: a retrospective cohort study. *Lancet* 2020;395:1054–62.
319 [https://doi.org/10.1016/S0140-6736\(20\)30566-3](https://doi.org/10.1016/S0140-6736(20)30566-3).
- 320 [28] Zhang G, Hu C, Luo L, Fang F, Chen Y, Li J, et al. Clinical features and short-term outcomes of 221 patients
321 with COVID-19 in Wuhan, China. *J Clin Virol* 2020;127:104364. <https://doi.org/10.1016/j.jcv.2020.104364>.
- 322 [29] Shang Y, Liu T, Wei Y, Li J, Shao L, Liu M, et al. Scoring systems for predicting mortality for severe
323 patients with COVID-19. *EClinicalMedicine* 2020:100426. <https://doi.org/10.1016/j.eclinm.2020.100426>.
- 324 [30] Deng Q, Hu B, Zhang Y, Wang H, Zhou X, Hu W, et al. Suspected myocardial injury in patients with
325 COVID-19: Evidence from front-line clinical observation in Wuhan, China. *Int J Cardiol* 2020;311:116–21.
326 <https://doi.org/10.1016/j.ijcard.2020.03.087>.
- 327 [31] Cespedes M da S, Souza JCRP de. Sars-CoV-2: A clinical update - II. *Rev Assoc Med Bras* 2020;66:547–57.
328 <https://doi.org/10.1590/1806-9282.66.4.547>.
- 329 [32] Li J-W, Han T-W, Woodward M, Anderson CS, Zhou H, Chen Y-D, et al. The impact of 2019 novel
330 coronavirus on heart injury: A Systematic review and Meta-analysis. *Prog Cardiovasc Dis* 2020.
331 <https://doi.org/10.1016/j.pcad.2020.04.008>.
- 332 [33] Santoso A, Pranata R, Wibowo A, Al-Farabi MJ, Huang I, Antariksa B. Cardiac injury is associated with
333 mortality and critically ill pneumonia in COVID-19: A meta-analysis. *Am J Emerg Med* 2020.
334 <https://doi.org/10.1016/j.ajem.2020.04.052>.
- 335 [34] Shi S, Qin M, Yang B. Coronavirus Disease 2019 (COVID-19) and Cardiac Injury –Reply. *JAMA Cardiol*
336 2020. <https://doi.org/10.1001/jamacardio.2020.2456>.
- 337 [35] Madjid M, Safavi-Naeini P, Solomon SD, Vardeny O. Potential Effects of Coronaviruses on the
338 Cardiovascular System. *JAMA Cardiol* 2020;5:831. <https://doi.org/10.1001/jamacardio.2020.1286>.
- 339 [36] Martins-Filho PR, Barreto-Filho JAS, Santos VS. Biomarcadores de Lesão Miocárdica e Complicações

- 340 Cardíacas Associadas à Mortalidade em Pacientes com COVID-19. *Arq Bras Cardiol* 2020;115:273–7.
341 <https://doi.org/10.36660/abc.20200372>.
- 342 [37] Nishiga M, Wang DW, Han Y, Lewis DB, Wu JC. COVID-19 and cardiovascular disease: from basic
343 mechanisms to clinical perspectives. *Nat Rev Cardiol* 2020;17:543–58.
344 <https://doi.org/10.1038/s41569-020-0413-9>.
- 345 [38] Gupta A, Madhavan M V., Sehgal K, Nair N, Mahajan S, Sehrawat TS, et al. Extrapulmonary
346 manifestations of COVID-19. *Nat Med* 2020;26:1017–32. <https://doi.org/10.1038/s41591-020-0968-3>.
- 347 [39] Sardinha DM, Simor A, de Oliveira Moura LD, Silva AGI da, Batista Lima KV, Dias Garcez JC, et al. Risk
348 Factors for Acute Renal Failure after Cardiac Catheterization Most Cited in the Literature: An Integrative
349 Review. *Int J Environ Res Public Health* 2020;17. <https://doi.org/10.3390/ijerph17103392>.
- 350 [40] Tang N, Li D, Wang X, Sun Z. Abnormal coagulation parameters are associated with poor prognosis in
351 patients with novel coronavirus pneumonia. *J Thromb Haemost* 2020;18:844–7.
352 <https://doi.org/10.1111/jth.14768>.
- 353 [41] Biembengut ÍV, de Souza T de ACB. Coagulation modifiers targeting SARS-CoV-2 main protease Mpro for
354 COVID-19 treatment: an in silico approach. *Mem Inst Oswaldo Cruz* 2020;115.
355 <https://doi.org/10.1590/0074-02760200179>.
- 356 [42] Klok FA, Kruip MJHA, van der Meer NJM, Arbous MS, Gommers DAMPJ, Kant KM, et al. Incidence of
357 thrombotic complications in critically ill ICU patients with COVID-19. *Thromb Res* 2020;191:145–7.
358 <https://doi.org/10.1016/j.thromres.2020.04.013>.
- 359 [43] Lodigiani C, Iapichino G, Carenzo L, Cecconi M, Ferrazzi P, Sebastian T, et al. Venous and arterial
360 thromboembolic complications in COVID-19 patients admitted to an academic hospital in Milan, Italy.
361 *Thromb Res* 2020;191:9–14. <https://doi.org/10.1016/j.thromres.2020.04.024>.
- 362 [44] Sardinha DM, Neiva Assis L de M e, Amoedo AS, Gonçalves KR de O, Melo RHD, Lima CAS, et al.
363 Nursing Diagnoses in Heart Failure: Integrative Review. *Cardiol Angiol An Int J* 2020;1–9.
364 <https://doi.org/10.9734/ca/2020/v9i230129>.
- 365 [45] Bader F, Manla Y, Atallah B, Starling RC. Heart failure and COVID-19. *Heart Fail Rev* 2020.
366 <https://doi.org/10.1007/s10741-020-10008-2>.
- 367 [46] Parohan M, Yaghoubi S, Seraji A. Cardiac injury is associated with severe outcome and death in patients
368 with Coronavirus disease 2019 (COVID-19) infection: A systematic review and meta-analysis of
369 observational studies. *Eur Hear J Acute Cardiovasc Care* 2020;204887262093716.
370 <https://doi.org/10.1177/2048872620937165>.
- 371 [47] Kochav SM, Coromilas E, Nalbandian A, Ranard LS, Gupta A, Chung MK, et al. Cardiac Arrhythmias in
372 COVID-19 Infection. *Circ Arrhythm Electrophysiol* 2020;13:e008719.
373 <https://doi.org/10.1161/CIRCEP.120.008719>.
- 374