

1 Performance of Saliva, Oropharyngeal Swabs, 2 and Nasal Swabs for SARS-CoV-2 Molecular 3 Detection: A Systematic Review and Meta- 4 analysis

5 Rose A. Lee MD, MSPH^{a,b}, Joshua C. Herigon MD, MPH^a, Andrea Benedetti PhD^d, Nira R. Pollock MD,
6 PhD^{b,c}, Claudia M. Denking MD, PhD^e

7
8 ^aDivision of Infectious Diseases, Department of Pediatrics, Boston Children's Hospital, Boston, USA
9 ^bDivision of Infectious Diseases, Department of Medicine, Beth Israel Deaconess Medical Center, Boston,
10 USA
11 ^cDepartment of Laboratory Medicine, Boston Children's Hospital, Boston, USA
12 ^dDepartment of Medicine and of Epidemiology, Biostatistics & Occupational Health, McGill University,
13 Montreal, Canada
14 ^eDivision of Clinical Tropical Medicine, Center of Infectious Diseases, Heidelberg University Hospital,
15 Heidelberg, Germany

16
17 Corresponding Author:

18 Nira Pollock, M.D., Ph.D., D(ABMM)
19 Associate Medical Director, Infectious Diseases Diagnostic Laboratory, Boston Children's Hospital,
20 Division of Infectious Diseases, Beth Israel Deaconess Medical Center,
21 Associate Professor of Pathology and Medicine, Harvard Medical School
22 Farley Building 8th floor, Room FA828
23 300 Longwood Ave 45 Boston, MA 02115
24 Phone: 857 -218 -5113 Fax: 617 -730 -0383
25 email: nira.pollock@childrens.harvard.edu

26

27

28

1
2
3
4
5
6
7
8
9
10
11
12
13
14
15
16
17
18
19
20
21
22
23
24
25
26
27
28
29
30
31
32
33
34

ABSTRACT:

Background: Nasopharyngeal (NP) swabs are considered the highest-yield sample for diagnostic testing for respiratory viruses, including SARS-CoV-2. The need to increase capacity for SARS-CoV-2 testing in a variety of settings, combined with shortages of sample collection supplies, have motivated a search for alternative sample types with high sensitivity. We systematically reviewed the literature to understand the performance of alternative sample types compared to NP swabs.

Methods: We systematically searched PubMed, Google Scholar, medRxiv, and bioRxiv (last retrieval October 1st, 2020) for comparative studies of alternative specimen types [saliva, oropharyngeal (OP), and nasal (NS) swabs] versus NP swabs for SARS-CoV-2 diagnosis using nucleic acid amplification testing (NAAT). A logistic-normal random-effects meta-analysis was performed to calculate % positive alternative-specimen, % positive NP, and % dual positives overall and in sub-groups. The QUADAS 2 tool was used to assess bias.

Results: From 1,253 unique citations, we identified 25 saliva, 11 NS, 6 OP, and 4 OP/NS studies meeting inclusion criteria. Three specimen types captured lower % positives [NS (0.82, 95% CI: 0.73-0.90), OP (0.84, 95% CI: 0.57-1.0), saliva (0.88, 95% CI: 0.81 – 0.93)] than NP swabs, while combined OP/NS matched NP performance (0.97, 95% CI: 0.90-1.0). Absence of RNA extraction (saliva) and utilization of a more sensitive NAAT (NS) substantially decreased alternative-specimen yield.

Conclusions: NP swabs remain the gold standard for diagnosis of SARS-CoV-2, although alternative specimens are promising. Much remains unknown about the impact of variations in specimen collection, processing protocols, and population (pediatric vs. adult, late vs. early in disease course) and head-to-head studies of sampling strategies are urgently needed.

1 **Introduction:**

2 Testing for SARS-CoV-2 (severe acute respiratory syndrome coronavirus 2, the etiologic agent of COVID-
3 19), has preferentially utilized nasopharyngeal (NP) sampling with flocked swabs. This sampling method
4 is presumed to have the highest diagnostic yield, as evidenced by its use as a reference method by the
5 Food and Drug Administration (FDA). (1). However, NP sampling requires professional collection (a major
6 limitation given the strained health care system in almost all parts of the world) and protective
7 equipment which, similar to the flocked swabs themselves, is in short supply. In addition, NP sampling is
8 uncomfortable, limiting patients' willingness to come forward for testing especially if asymptomatic.

9 If large scale testing of symptomatic and asymptomatic patients is to become a reality, innovation in
10 sampling is as important as innovation in testing. Innovation in sampling requires consideration of
11 sampling methods (e.g., choice of swab, choice of sample type) as well as self-sampling.

12 As of October 2020, interim guidance from the Centers for Disease Control and Prevention (CDC) (2)
13 recommends upper respiratory tract testing with any of the following specimens: NP swab, NP
14 wash/aspirate, nasal wash/aspirate, oropharyngeal (OP) swab, nasal mid-turbinate (MT) swab using a
15 flocked tapered swab, an anterior nares (AN) nasal swab using a flocked or spun polyester swab, or a
16 saliva specimen obtained by supervised self-collection. The FDA, in contrast, states that NP, OP, MT, and
17 AN swab samples are appropriate for clinical testing, and that "more data are necessary to better
18 understand the performance when using specific saliva collection devices or other specimen types for
19 COVID-19 testing" (1).

20 Saliva is the subject of the largest body of research on alternative specimen types as well as the
21 specimen of choice for numerous companies putting high-volume testing programs in place. Certain
22 regions of the world, such as Hong Kong, have already adopted saliva in their mass screening protocols
23 (3). The pathophysiological rationale for saliva sampling is based on the angiotensin-converting enzyme
24 II (ACE-2) being the cellular receptor for SARS-CoV-2 (4), similar to SARS-CoV (5). High ACE-2 receptor
25 expression in oral mucosa and salivary glands has been recently demonstrated (6, 7). Salivary gland duct
26 epithelial cells previously were identified as a target for SARS-CoV in a rhesus macaque model (8). One
27 study detected SARS-CoV-2 in saliva collected via expression directly from the salivary gland duct (9).
28 These findings suggest that saliva may be a suitable and high-yield diagnostic sample for SARS-CoV-2
29 testing based on local viral replication, in addition to the possible mixing in saliva of lower and upper
30 respiratory tract fluids that can carry virus. Saliva offers several advantages as it is a non-invasive sample
31 type that can be self-collected, thus decreasing infectious risk to medical personnel, use of personal
32 protective equipment, and reliance on equipment subject to supply shortages such as nasal, OP, or NP
33 swabs.

34 OP (throat) swabs have been in wide use for SARS-CoV-2 diagnosis since the beginning of the pandemic
35 (3). Consensus is lacking on both the best collection approach and nomenclature for oral specimens. The
36 terms "oropharyngeal" and "throat" have been used in the literature, and therefore we describe and
37 group them here as "oropharyngeal" or OP swabs. No comprehensive evaluations of their performance
38 compared to other methods exist. OP swabs are less specialized than NP swabs and thus OP samples
39 can be collected with a broader range of swab products. While the FDA recommends that OP swabs be
40 collected by a health care professional (1), some have suggested that self-swabbing might be possible.

1 Nasal swabs (NS), another important alternative specimen type, also have the advantages of increased
2 comfort and possible self-collection. They have been classified into two types anatomically. Nasal mid-
3 turbinate (MT) swabs, also called deep nasal swabs, are defined by the CDC (2) as flocked/tapered swabs
4 performed while tilting the patient’s head back 70 degrees and inserting the swab less than one inch
5 (about 2 cm into the nostril) until resistance is met at the turbinates before rotating the swab several
6 times against the nasal wall. Anterior nares (AN) swabs are defined without a head tilt and inserting the
7 entire swab at least 0.5 inch (1cm) inside the nostril (naris) and sampling the membrane by various
8 methods, including rotating the swab in place or around the inside wall of the nostril multiple times,
9 and/or leaving in place for 10 to 15 seconds. The current “lower nasal swab” protocol sanctioned by the
10 FDA specifies swab insertion “until you feel a bit of resistance” and thus matches the MT depth defined
11 by the CDC, though swab type is not specified (10). The CDC and FDA suggest swabbing both nares for
12 sampling.

13 A large body of literature on the yield of these alternative sample types for nucleic acid amplification
14 testing (NAAT) has been created but a comparative systematic summary of the relative performance of
15 these alternative specimen types, compared to NP swabs, is missing and is needed to inform decision
16 makers. Furthermore, the data for self-collection of these alternative specimens (1, 2) have not been
17 systematically evaluated. Here, we aim to clarify the performance of alternative specimen types for
18 diagnosis of SARS-CoV-2 by systematically reviewing and meta-analyzing the literature on this topic
19 available through October 2020.

20 **Methods:**

21 This systematic review and meta-analysis is reported in accordance with PRISMA guidelines (see
22 Supplementary File for the PRISMA checklist). The protocol for this work was registered in the
23 International Prospective Register of Systematic Reviews (PROSPERO) (identifier: CRD42020214660).

24 Search strategy, information sources, and eligibility criteria

25 We performed a comprehensive search of the following databases (Pubmed/MEDLINE and Google
26 Scholar) as well as the preprint servers medRxiv and bioRxiv to identify relevant studies from January
27 1st, 2020 until October 1st, 2020. Only English language articles were allowed. An example search
28 strategy is provided in Supplementary Methods. Additional studies were retrieved by screening the
29 reference lists of the included articles and from archives of the reviewers. We excluded papers from the
30 same hospital with overlapping inclusion dates, to avoid including patients more than once and thus
31 minimize bias in the data (11). Cross-sectional, case-control, and cohort studies and randomized
32 controlled trials were included independent of number of specimens tested. Conference proceedings
33 and abstracts were deemed ineligible. Participants of all age groups with presumed SARS-CoV-2
34 infections, in all settings, were included. We included only papers utilizing NAAT for SARS-CoV-2
35 detection.

36 Data Extraction

37 Two reviewers assessed all articles (R.L. and J.H.) independently and disagreements were resolved with
38 input of a third investigator (N.R.P. or C.M.D.).

39 We compared alternative sampling to NP sampling. We extracted only data for positive NAAT results on
40 at least one sample type and only when sampling methods being compared were performed

1 synchronously. If patients were tested serially over time and data could not be extracted for specific
2 timepoints, we excluded the study. If multiple different RT-PCR tests were performed on one sample
3 within one study, we utilized the data from the best-performing assay. If a study contributed data to
4 more than one analysis (e.g., two different alternative sample types in one study, each compared to NP
5 swab), it was considered as two or more datasets. If a combined NP/OP sample was used, and no data
6 was available for NP sampling alone, we included the study, using NP/OP as the comparator. For each
7 specimen type, in addition to data on test performance, we extracted data for factors likely to affect test
8 performance as detailed below. Data on throat or gargle washes were not included in this meta-analysis
9 (12, 13).

10 Our study retrieval process is depicted in Supplementary Figure 1. Records were organized using a
11 reference manager (Zotero Version 5.0.89, George Mason University).

12 Assessment of methodological quality

13 The Quality Assessment of Diagnostic Accuracy Studies-2 (QUADAS-2) tool, a validated quality
14 assessment tool for diagnostic studies, was used to assess the included studies' risk of bias (14). The four
15 domains assessed for risk of bias and applicability include: 1) participant selection; 2) index test; 3)
16 reference test; 4) flow and timing.

17 Data analysis

18 Under the assumption that 1) we do not know in advance which specimen type performs best for SARS-
19 CoV-2 detection and 2) false positives are very infrequent for NAATs performed in qualified laboratories,
20 we focused only on individuals positive for at least one sample type and report on agreement between
21 samples rather than measures of sensitivity and specificity. Specifically, for each study, we included all
22 individuals with paired specimens who had at least one positive specimen as the denominator, and
23 calculated 1) % positive Alt [percent of individuals positive by the alternative specimen type (e.g. saliva,
24 NS, or OP swab)], 2) % positive NP [percent of individuals positive by the NP specimen (or NP/OP in a
25 minority of cases)], and 3) % dual positive (percent of individuals positive for both the alternative
26 specimen and NP specimen).

27 We present results of the systematic review in forest plots. Meta-analyses were only performed when
28 there were at least 4 primary studies and 20 patients per sub-group analysis. The % positive Alt, %
29 positive NP, and % dual positive for pooled, overall, and in sub-groups were estimated using a logistic-
30 normal random-effects model (via the 'metaprop_one' command with Stata (15)). We applied the
31 Freeman-Tukey Double Arcsine transformation to stabilize variances and score 95% intervals were
32 computed. Heterogeneity was measured by the inconsistency index (I^2), which describe the percentage
33 of variation across studies due to heterogeneity rather than chance. To investigate possible
34 contributors to heterogeneity, we present sub-group analyses by (1) site of sampling; (2) swab material
35 (flocked, unflocked); (3) sampling procedure; (4) professional vs self-sampling; (5) specimen
36 processing/NAAT (including dilution, nucleic acid extraction procedure, and assay used); (6) populations
37 (e.g. pediatric, asymptomatic); (7) symptom duration prior to testing. The robustness of the meta-
38 analysis to publication bias was assessed by the symmetry of funnel plots.

39 All analyses and graphs were performed using Stata 15.1 (StataCorp, Texas) and GraphPad 8.5 (Prism,
40 SanDiego).

1 **Results:**

2 Our search yielded 1,253 unique citations, of which 25 were included in the analyses for saliva, 11 for
3 NS, 6 for OP, and 4 for OP/NS swabs. Reasons for exclusions of studies are laid out in Supplementary
4 Figure 1.

5
6 The studies we included in the meta-analysis overall had a moderate-high risk of bias according to
7 QUADAS-2 (Supplementary Table 1,2) with studies on NS having a low to moderate risk (Supplementary
8 Table 3). Many studies did not specify patient selection methodology (random or consecutive). Many
9 studies were also comprised of cohorts of known positives (case-control) that were then re-tested with
10 paired specimens and therefore at a high risk of a selection bias limiting applicability of results to the
11 general screening population.

12 13 Saliva

14 In total, 25 studies (16–40) met our inclusion criteria to assess saliva as an alternative sample type for
15 SARS-CoV-2 diagnosis. The studies cumulatively included 4,528 paired saliva and NP swab specimens,
16 although two studies used a combined NP/OP swab as a comparator (24, 39). An additional 13 studies
17 (3, 9, 41–51) described a performance estimate for saliva as a specimen type, but these studies were
18 excluded from the meta-analysis as the saliva and NP samples were either not collected synchronously,
19 or multiple paired specimens were taken from the same set of patients and the data could not be
20 extracted for a unique patient/time point.

21 Overall across the 25 studies, we found that the % positive saliva [0.88, 95% confidence interval (CI) 0.81
22 – 0.93] was lower than the % positive NP (or NP/OP) although not substantially different [0.94 (95% CI
23 0.90 – 0.98)]. The % dual positive was noticeably lower than either specimen type alone [0.79, (95% CI
24 0.71 – 0.86), Figure 1], indicating relatively poor agreement. Considerable heterogeneity was also
25 detected (I^2 88.6%). This heterogeneity was likely attributable to the variation in study procedures and
26 patient population between studies, as outlined in Supplementary Table 4. Notably, there were no
27 head-to-head studies for any of the comparisons described below for differences in collection,
28 processing, and populations.

29 Saliva collection protocols for included studies were assessed for differences with respect to 1) asking
30 patients to cough or clear their throat before submission of sample (likely mixed sputum and saliva
31 specimen or deep throat saliva specimen) or 2) requesting the patients submit “drool” or “spit”. While
32 some authors (42) have hypothesized that capture of posterior oropharyngeal saliva or mixed
33 sputum/lower respiratory specimen is important for diagnostic sensitivity, we did not find a
34 considerable difference in performance, although % positive saliva was higher for studies (33, 34, 37,
35 40) that specified cough or deep throat saliva specimen vs studies that did not specifically ask for this
36 [0.94 (95% CI: 0.87-0.99) vs. 0.86 (95% CI: 0.78-0.92), Fig. 2]. For NP samples in these two groups, the %
37 positive detection was similar [0.89 (95% CI: 0.60-1.0) vs. 0.95 (95% CI: 0.93-0.97)]. Notably, many
38 studies that supported the hypothesis of a coughing or deep throat saliva being better than drool/spit
39 sample were excluded from the meta-analysis due to non-synchronous sample collection or repeat
40 testing on the same set of patients (3, 41–43).

1 Other differences in sampling between studies included avoidance of eating, drinking, or brushing teeth
2 before specimen submission (typically 30 minutes to 2 hours). Protocols that specified avoidance of
3 eating, drinking, or brushing teeth prior to saliva collection (22, 23, 26, 31–34, 40) had higher % positive
4 saliva, although the difference was not substantial [0.91 (95% CI 0.86 – 0.95) vs. 0.86 (95% CI 0.79 –
5 0.92), Fig. 2]. For NP sampling in the same two groups of studies, the difference was minimal [0.94 (95%
6 CI: 0.8-1.0) vs. 0.95 (95% CI: 0.92-0.97)]. A few studies specifically requested morning submission (33,
7 40) in addition to avoidance of food/drink and similar saliva performance was identified between
8 protocols that specified morning submission versus those that did not [92% positive saliva (95% CI: 0.88-
9 0.96) vs. 87% (95% CI: 0.79-0.93), respectively]. However, for NP sampling in the two groups of
10 protocols, the % positive NP was lower with morning submission [66% positive (95% CI: 0.60-0.72) vs.
11 96% positive (95% CI: 0.94-0.97)], but this was largely driven by one study (33) in which NP swabs
12 performed poorly (this was an outpatient cohort of patients who were asymptomatic at the time of
13 collection and had received their diagnosis at least one week prior).

14 While many studies specified self-collected saliva (16, 17, 20, 25–27, 29, 30, 33, 34, 37, 39, 40), some
15 studies described supervised collection (22, 28, 31, 35, 38). The % positive saliva was higher for self-
16 collection than supervised collection although the difference was not substantial [0.92 (95% CI: 0.86-
17 0.96) vs. 0.83 (95% CI: 0.60-0.98), respectively, Fig. 2].

18 There were also substantial differences in specimen processing, including variable dilution of the saliva
19 specimen prior to NAAT, and use of protocols that directly input saliva samples into the NAAT without
20 nucleic acid extraction. We found that even in the absence of dilution for saliva, the % positive could not
21 match that of NP swabs. Studies utilizing undiluted saliva specimens (22, 26) had similar % positive saliva
22 to studies utilizing diluted saliva (16, 17, 23–25, 27–32, 35, 37, 40) [Fig. 2, 0.92 (95% CI: 0.86-0.97) vs.
23 0.89 (95% CI: 0.81-0.95)]. All NP swabs were eluted in viral transport media, and performance was
24 similar in these two groups of studies [0.97 (95% CI: 0.91-1.0) for undiluted saliva vs. 0.94 (95% CI: 0.92-
25 0.96) for diluted saliva]. In studies using diluted saliva, there was wide variation in dilution methods,
26 with many groups not specifying the degree of dilution.

27 Studies that did not use a nucleic acid extraction step (19, 28) but instead directly input the saliva
28 specimen into the amplification assay without any pre-processing showed substantially lower % positive
29 saliva than studies that had an extraction step [0.60 (95% CI: 49%-70%) vs. 0.89 (95% CI: 83%-94%), Fig.
30 2]. In contrast, % positive NP swab was not different between the two groups of studies [0.89 (95% CI:
31 0.81-0.95) vs. 0.95 (95% CI: 0.90-0.98)], with all except one study (28) using a nucleic acid extraction for
32 the NP swab sample (28).

33 While the majority of studies utilized reverse transcription polymerase chain reaction (RT-PCR) assays,
34 one study (19) used reverse transcription loop-mediated isothermal amplification (RT-LAMP), and two
35 studies used transcription mediated amplification (TMA) (35, 36). NAATs utilized also differed over ten-
36 fold in their limits of detection between studies, which has been previously described to affect
37 diagnostic positivity (52). We found slightly higher, but not substantially different, percentages of
38 positive detection in studies with a more sensitive/lower [<1000 copies/milliliter (cp/mL)] limit of
39 detection (LOD) (20, 21, 24, 34, 39) compared to studies with $\text{LOD} \geq 1000$ cp/mL (23, 26, 27, 31–33, 51)
40 [0.90 (95% CI: 0.79-0.97) vs. 0.87 (95% CI: 0.77 – 0.95)]. The differences were similar for NP swabs (100%
41 (95% CI: 0.97-1.0) vs. 0.91 (95%CI: 0.71-1.0)).

1 We also assessed if patient symptomatology could explain variable diagnostic performance between
2 saliva and NP sampling. We found that only a few studies provided asymptomatic (16, 19,
3 33)/symptomatic patient data (17, 18, 21–23, 25, 27, 28, 34, 35, 37, 39, 40) that could be parsed and
4 extracted for analysis. We found that % positive saliva was similar between asymptomatic and
5 symptomatic patients [0.87 (95% CI: 0.70-0.98) vs. 0.88 (95% CI: 0.79-0.95) respectively]. The difference
6 between % positive NP in asymptomatic vs symptomatic patients was much larger [symptomatic 0.96
7 (95% CI: 0.93-0.99) vs. asymptomatic 0.73 (95% CI: 0.47-0.93, Fig. 2)]. These findings, however, were
8 driven by one study (33) with superior saliva performance in asymptomatic patients [% positive saliva
9 0.93 (95% CI: 0.88-0.97) vs. % positive NP 0.52 (0.44-0.60)]. As discussed above, this study (33) included
10 an outpatient cohort who had received their diagnosis at least one week prior. Notably, although the
11 patient population is described as “asymptomatic,” it is unclear if this was just at the time of collection
12 and they had symptoms closer to their initial diagnosis.

13 Another important question that we were not able to adequately address from the literature is the
14 performance of saliva in pediatric populations. There are two studies (51, 53) that evaluate the
15 performance of saliva in children, both of which showed worse performance compared to NP swabs
16 [8/11 children positive by NP swab were positive by saliva in one study (51), and in the other study 53%
17 of the children detected by NP swab were also positive by saliva (53)]. However, the timing of saliva
18 collection versus NP swab collection in both studies was unclear, results for asymptomatic vs
19 symptomatic children were not clearly distinguished, and sample processing methods were not clearly
20 described.

21 Invalid test results were also not consistently reported across studies. Viscosity of saliva was highlighted
22 in some studies as increasing errors in automated pipetting steps, necessitating dilution or biochemical
23 pre-treatment of samples (26, 35, 44).

24 Given that the fluctuation of viral load over time may differ between saliva and NP samples, and the
25 timepoints patients present themselves for diagnosis may vary, we also assessed differences in
26 diagnostic performance at different timepoints throughout the illness. Sub-group analysis of 6 studies
27 with extractable data (25, 27, 28, 36, 39, 51) found that % positive saliva was overall lower >7 days after
28 symptom onset [0.74 (95%CI: 0.62-0.85)] compared to ≤ 7 days [0.89 (95% CI: 0.73-0.99)], which was
29 also observed for NP swabs [91% (95% CI: 0.82-0.98) vs 99% (95% CI: 0.90-1.0), respectively].

30 OP swab

31 We identified six studies that assessed OP vs NP swabs (54–59) and were suitable for meta-analysis.
32 Given the paucity of data, subgroup analyses to assess differences in collection procedure, sample
33 processing, and patient symptomatology were limited (Supplementary Figure 2). We found that %
34 positive OP swab was similar to % positive NP swab [0.84 (95% CI: 0.57-1.0) vs. 0.88 (95% CI: 0.73-0.98)]
35 although % dual positive was only 0.68 (95% CI: 0.36-0.93) suggesting limited agreement (Figure 3).
36 Notably, the % positive NP estimate was unusually low in this group of studies, which is largely driven by
37 one study (56) with a large gap in performance between % positive OP and % positive NP [0.86 (95% CI:
38 0.65-0.97) vs. 0.41 (95% CI: 0.21-0.64) respectively] that was not observed in other studies. This study
39 was unique in that paired samples were taken near the end of a hospitalization (unclear duration of
40 symptoms) in a cohort comprised of known positives from prior NP swab RT-PCR positive patients to
41 help determine discharge eligibility.

1 Another outlier study in this dataset was a cohort of symptomatic patients (55) in a Wuhan hospital
2 early on in the pandemic with unusually poor performance of OP swabs [0.36 (95% CI: 0.25-0.47)] in
3 comparison to NP swabs [0.88 (95% CI: 0.79-0.94)]. There were not sufficient data in the OP swab meta-
4 analysis to assess the impact of symptomatology or duration of symptoms on percent positives.

5 Only 3 studies specified flocking of swabs (54, 57, 59), and in all 3 cases unflocked oropharyngeal swabs
6 were compared to flocked NP swabs. The percent positive detection rate for these 3 studies was similar
7 between OP and NP sampling [0.96 (95% CI: 0.88-1.0) vs. 0.97 (95% CI: 0.90-1.0)].

8 There were two studies that used healthcare-worker collected oral swabs (54, 57) and the positive
9 detection rate for OP vs. NP sampling was similar [0.97 (95% CI: 0.89 – 1.0) vs 0.96 (95% CI: 0.87- 1.0)
10 respectively, Fig. 3]. One study used unobserved self-collected OP swabs and reported similar
11 performance between sample types but in a limited sample set of only 12 positive patients [0.92 (95%
12 CI: 0.62-1.0) for OP vs. 1.0 (95% CI: 0.74-1.0) for NP]]. The 3 other studies (55, 56, 58) in this meta-
13 analysis did not specify self- vs. healthcare-worker collection. There was one study (60) that compared
14 self- versus lab-technician collected OP swabs and found that only 14/24 total positives were detected
15 by self-collection versus 22/24 total positives for lab-technician-collected. This study was excluded from
16 this meta-analysis, however, as the pairing of OP swabs to NP swabs was unclear.

17 Three studies that assessed oral swab specimens were excluded from this meta-analysis as they were
18 not oropharyngeal. There was one pediatric study of buccal swabs in Singapore (61) where children
19 underwent daily NP and buccal swabs; 9/11 children with SARS-CoV-2 detected by NP swab also at some
20 point had positive buccal swabs. One study that described sampling of the anterior 2/3rd of the dorsum
21 of the tongue (62) found similar positive detection rates from “tongue” swabs (46/51 total positives)
22 and NP swabs (49/51 total positives). Another study asked patients to cough prior to sampling oral fluid
23 in cheeks, gums, hard palate, and tongue (63), and reported that detection was slightly higher (26/29
24 total positives) than NP swabs (23/29 total positives).

25 AN and MT Swabs

26 We identified 11 studies using either AN or MT swab that could be combined for pooled meta-analysis
27 (32, 35, 54, 59, 62–68) with NP swabs as the reference sample type, although one study (59) used a
28 combined NP/OP swab for reference. We found that the % positive NS (either AN or MT) (0.82, 95% CI:
29 0.73– 0.90), was substantially lower than % positive NP swab (0.98, 95% CI: 0.96 – 1.0) as well as % dual
30 positive (0.79, 95% CI: 0.69 – 0.88), suggestive of limited agreement between the two sample types (Fig.
31 4). Considerable heterogeneity was again detected between studies ($I^2 = 87%$), which we attributed to
32 differences in study procedures. Accordingly, we assessed performance by collection protocol, self-
33 collection/supervision/healthcare-worker-collection, sample processing, and patient symptoms
34 (Supplementary Table 5). Notably there were no head-to-head studies for any of the comparisons.

35 The pooled estimates of % positive NS via AN (35, 62) versus MT swabs (using the depth of insertion to
36 classify AN vs MT sampling, per CDC description) were similar (54, 59, 63, 66–68) [0.90 (95% CI: 0.84-
37 0.94) vs. 0.84 (95% CI: 0.65 – 0.97), Fig. 5]. % positive NP was similar between groups [0.99 (95% CI:
38 0.95-1.0) vs. 0.97 (95% CI: 0.92-1.0) respectively]. There were only two studies that assessed AN swabs,
39 and notably, one of the studies (62) also compared AN to MT sampling (AN performed before MT).
40 Performance was similar between AN and MT swabs (48 out of 51 total positives for AN vs. 50 out of 52

1 total positives for MT). In this study, both the AN and MT swabs were collected from both nares, and
2 the AN swab was unflocked, whereas the MT swab was flocked.

3 We found that a more sensitive assay (LOD <1000 copies/mL) (64, 65, 68) resulted in worse performance
4 of NS in comparison to assays with LOD \geq 1000 copies/mL (32, 54, 59, 63, 66, 67) [0.61 (95% CI: 0.40-
5 0.79) vs. 0.85 (95% CI: 0.82-0.91)], while % positive NP were similar (0.99 (95% CI: 0.93-1.0) vs. 0.97 (95%
6 CI: 0.92-1.0) respectively). This may reflect lower viral burden in the mid-turbinate/anterior nares region
7 than the nasopharynx resulting in lower performance in comparison to NP swabs that is only evident
8 when using a highly sensitive (LOD < 1000 copies/mL) assay. Notably, the discordant paired samples
9 described in the studies also were found to have lower viral loads than concordant pairs.

10 Two of the studies (64, 68) with the worst NS performance used a more sensitive assay and also
11 compared unflocked NS to flocked NP swabs (positive NS detection 48– 56%). There were 3 other
12 studies (35, 54, 59), however, that also used unflocked NS compared to flocked NP swabs and reported
13 higher detection (83-100%). Ultimately, NS studies that specified that both NS and NP swabs were
14 flocked (63, 66) had a substantially higher % positive NS than studies where an unflocked NS was
15 compared to a flocked NP swab (35, 54, 59, 64, 68), although confidence intervals were wide and
16 overlapping (0.90 (95% CI: 0.81-0.97) vs. 0.77 (95% CI 0.55-0.93), Fig. 5), and this finding may have been
17 partially driven by the two studies using the lower LOD assay. % positive NP between these two groups
18 were similar [0.97 (95% CI: 0.90-1.0) vs. 0.97 (95% CI: 0.94-0.99)]. One study (62) collected unflocked AN
19 swabs, flocked MT swabs, and unflocked NP swabs for comparison and reported similar performance of
20 all three specimens as described above. However, use of a non-flocked swab for the NP sampling may
21 have decreased its sensitivity and artificially increased the sensitivity of MT and AN sampling.

22 Only 4 studies (35, 59, 62, 68) specified that NS were performed before NP swabs and although %
23 positive NS was higher in comparison to studies that did not specify the swab order, there was not a
24 substantial difference [0.85 (95% CI: 0.58-1.0) vs. 0.81 (95% CI: 0.74-0.88), Fig. 5]. % positive NP was the
25 same regardless of NS order [0.98 (95% CI: 0.95-1.0)]. Surprisingly, NS specimens collected from both
26 nares (35, 54, 62, 64, 67, 68) seemed to perform worse in comparison to swabs collected from a single
27 nostril (59, 63, 66), although the difference was not substantial [0.77 (95% CI: 0.59-0.91) vs. 0.93 (0.59-
28 0.91), Fig. 5]. % positive NP was again similar in these two scenarios [0.95 (95% CI: 0.95-0.99) for both
29 nares vs. 0.97 (95% CI: 0.83-1.0) for one nare]. Notably, this finding may again have been driven by the
30 two studies (64, 68) utilizing a more sensitive < 1000 cp/mL NAAT assay (both with poor detection by NS
31 and performed with swabs collected in both nares), a factor which we described previously as
32 associated with a lower NS detection rate.

33 We also found that unsupervised self-collected NS specimens (35, 59, 62) had higher percent positives
34 in comparison to swabs collected by healthcare workers (54, 64, 67, 68) [0.93, 95% CI: 0.85-0.98 vs.
35 0.68, 95% CI: 0.47-0.86, Fig. 5]. In only one study (63), the patient's self-collection was supervised (0.92,
36 95% CI: 0.74-0.99). Professional NP sampling performance was similar between the NS self-collection
37 and HCW-collection groups [0.99 (95% CI: 0.96-1.0) vs. 0.96 (95%CI: 0.92-0.99)]. Notably, the same two
38 studies (64, 68) showing the worst NS performance (and using more sensitive assays) were in the
39 healthcare-worker collected group.

40 We could not find any studies that specifically assessed only asymptomatic patients with NS, although
41 multiple studies used mixed populations and a few studies specified that all of the cohort was
42 symptomatic. Studies of only-symptomatic patients (35, 62, 64–67) had a similar % positive NS rate to

1 studies of mixed or unspecified patients [0.82 (95% CI: 0.73-0.91) vs. 0.83 (95% CI: 0.62-0.97), Fig. 5]. %
2 positive NP was similar between groups [0.99 (95% CI: 0.98-1.0) vs. 0.96 (95% CI: 0.88-1.0)]. There were
3 two studies (63, 67) with extractable data to assess the impact of symptom duration prior to testing, and
4 a lower yield after 7 days was found although the difference was not substantial [0.76 (95% CI: 0.60-
5 0.87) for > 7 days symptoms vs. 0.88 (95% CI: 0.74-0.95) for ≤ 7 days, Fig. 5]. % positive NP was similar in
6 both groups [1.0 (95% CI: 0.86-1.0) vs. 1.0 (0.98-1.0)].

7 Again, data were limited on pediatric populations when using nasal swabs. There are two pediatric
8 studies of nasal samples; one study (69) described NS to be outperforming OP swabs in 56 paired
9 samples from 11 pediatric patients, with Ct values lower in NS versus OP for all 11 first paired samples.
10 This study had to be excluded due to repeat sampling, as we were not able to extract unique patient
11 data from different timepoints. The other study (70) is not a nasal swab study, but describes NP
12 aspirates to be outperforming NP swabs for detection (% positive for NP aspirates was 88% in
13 comparison to 51% for NP swabs), though methods details provided were minimal and repeat sampling
14 on patients occurred.

15 Combined OP/NS as a specimen type

16 Four studies (59, 71–73) evaluated combined oropharyngeal and nasal swabs in comparison to NP swabs
17 (Fig. 6). Three of these studies (71–73) specified that a single swab was used for collection of an OP/NS
18 sample, whereas in one study it was unclear if two separate swabs were used for OP and NS sampling
19 and the results compiled (59). Two of the studies (59, 73) used MT swab depth, while one used AN
20 sampling (72), and one was unspecified (71). Three of the studies were healthcare-collected swabs, in
21 which the OP sampling was performed prior to NS (71–73), and only two of these studies specified
22 swabbing both nares (72, 73). Two studies used flocked swabs (71, 73), while the others used unflocked
23 swabs. The LOD of the assay in copies/mL was only available in one study (59) and > 1000 cp/mL. Two of
24 the studies (59, 71) found that the percent positive detection of the combined swab specimen was
25 greater than percent positive detection for the reference NP swabs. Pooled detection estimates were
26 similarly high between the combined swabs and NP swabs with the same % positive estimate [0.97 (95%
27 CI: 0.90 – 1.0)] although agreement between the two methods was less [0.90 dual positive (95% CI: 0.84
28 – 0.96)].

29 Assessment of publication bias

30 Visual inspection of a funnel plot of the study data versus standard error shows substantial asymmetry
31 and therefore suggest publication bias for all alternative sample types (Supplementary Fig. 3).

32 **Discussion:**

33 This systematic review and meta-analysis synthesizes a large number of studies comparing alternative
34 sample types to NP swab for SARS-CoV-2 detection by NAAT. While all 3 sample types independently
35 seemed to capture lower % positives [nasal swabs (0.82, 95% CI: 0.73-0.90), OP swabs (0.84, 95% CI:
36 0.57-1.0) and saliva (0.88, 95% CI: 0.81 – 0.93)] in comparison to NP swabs, combined OP/nasal swabs in
37 4 studies interestingly had the same % positive detection rate as NP swabs (0.97, 95% CI: 0.90-1.0) (Fig.
38 6).

39 For saliva specimens, we found slightly lower performance compared to NP swabs overall [0.88 (95% CI:
40 0.81-0.93) vs. 0.94 (95% CI: 0.90-0.98)], and only the absence of nucleic acid extraction resulted in a

1 substantially lower rate of detection. One study (44) had to be excluded from the meta-analysis due to
2 non-synchronous collection of NP and saliva samples. This study is of interest nevertheless, as it tested
3 different RT-PCR platforms on the same set of saliva specimens using 3 different extraction-free
4 commercial RT-PCR assays against a standard RT-PCR assay with extraction and reported that 79, 81,
5 and 52 specimens were detected, respectively, out of a total of 84 positive specimens detected on the
6 standard assay, indicating that choice of extraction-free assay matters.

7 Self-collection, coughing or deep throat saliva, and avoiding food, drink, or toothbrushing resulted in
8 >5% increased positive saliva detection rates, although the difference was not substantial. Collection of
9 saliva greater than 7 days after symptom onset also resulted in >10% lower detection, although the
10 difference was not substantial. Viscosity has been described qualitatively in multiple studies as a
11 challenge in utilization of saliva as a specimen type, but invalid rates were not documented in many
12 studies; we note that invalid rates are a critical parameter and should be consistently reported.

13 We found that OP swabs seemed to perform similarly to saliva and NP swabs, but these estimates were
14 highly affected by one study (56) where samples were collected near the end of a hospitalization for
15 discharge purposes and the % positive NP was unusually low in comparison to the rest of the literature.
16 Overall, the data argue against self-collection of this sample type.

17 For NS, the literature to date supports that they perform worse than NP swabs although these findings
18 were largely driven by two studies (64, 68). There was no substantial difference between AN and MT
19 swab detection, and we note that AN/MT swab collection protocols may have overlapped in practice;
20 we defined AN vs MT based on depth of insertion, as the swab type was not always specified. We
21 hypothesize that the difference in NS to NP performance was driven by use of a particularly sensitive (<
22 1000 cp/mL LOD) assay for two of the studies; while this may reflect differences in viral burden
23 anatomically between NP and AN/MT sampling, the clinical significance of this difference remains to be
24 determined. We note that the discordant samples (NP+/NS-) typically had low viral loads on the NP
25 sample.

26 We hypothesize that nasal swab performance is likely highly dependent on collection procedure, which
27 has in turn evolved over time and a substantial amount of data remained unpublished (personal
28 communication Nira Pollock). Self-collection and single-nare sampling trended towards higher although
29 not substantially different % positive detection, although these results were largely driven by the two
30 studies with poor NS performance (64, 68). Detection was also lower after > 7 days of symptoms
31 although this difference was not substantial. There remain unresolved questions on the best performing
32 swab material (spun polyester, foam, rayon) and sample transport (buffer, dry swab) that could not be
33 addressed in this study due to limited data (many studies did not report the swab product or elution
34 details). We also still do not fully understand the impact of flocking on this specimen type. While studies
35 using flocked nasal swabs had a slightly higher % positive detection in comparison to unflocked swab
36 studies, the unflocked swab group included two studies using a lower LOD assay, and the 3 studies that
37 used a less sensitive assay had near 90% detection (similar to the flocked group).

38 OP/NS samples had surprisingly high performance compared to NP swabs; while this sample type likely
39 requires an operator for collection, additional studies are warranted to understand acceptability in adult
40 and pediatric patients.

1 Overall, much remains unknown about the impact on diagnostic sensitivity of variations in specimen
2 collection and processing protocols, and performance in specific key sub-populations (asymptomatic vs.
3 symptomatic, pediatric vs. adult, late vs. early testing from symptom onset). While we assess aggregate
4 data from different studies to gain insight into these variables, a limitation of this meta-analysis is that
5 true comparison is precluded in the absence of head-to-head studies. Furthermore, while there are
6 trends we observe in our subgroup analyses, these findings may be population-related and should be
7 interpreted with caution. Timing of sampling from symptom onset was also quite variable (collection
8 occurred within days to weeks in some studies), and was inconsistently reported, which likely had a
9 major impact on diagnostic performance given decreasing viral load over time. Head-to-head studies are
10 urgently needed of flocked vs unflocked swabs (and specialized vs unspecialized swabs for MT
11 collection), collected at different times in disease and with different sampling methods, and also in
12 important subpopulations (e.g. children), to resolve the persistent uncertainty.

13 We note that the reporting quality of studies was low, STARD guidelines (74) were not consistently
14 followed, and study bias was considered moderate to high on QUADAS 2. Lastly, in this study we chose
15 to report the % positive alternative-specimen, % positive comparator-specimen, and % dual positives
16 instead of the positive percent agreement (PPA). This decision was motivated by our presumption
17 regarding the low rate of false-positives using NAAT, and the potential for an alternative to yield more
18 positive results than the comparator NP, which would otherwise not be considered.

19 In summary, while alternative specimens (particularly saliva and OP/NS samples) show promise, we find
20 that the literature to date suggests that NP swabs are indeed the gold standard in comparison to
21 alternative specimen types (saliva, OP swab, NS). We identify self-collected nasal swabs and saliva to
22 have similar performance to healthcare-worker obtained specimens, which is also supported by a head-
23 to-head comparison of self-collected AN versus professionally-collected NP swabs utilizing an antigen
24 rapid test for detection (75). We reiterate that the LOD of any assay will impact detection and centers
25 should be aware of the increased possibility of false negatives with any sample type when using a less
26 sensitive assay. Given the promising results of combined oropharyngeal and nasal swab studies, more
27 studies on alternative specimen combinations would be useful. Lastly, we encourage future studies to
28 provide more clarity about exact details of collection procedures, specific swab shape and materials
29 used, sample processing methods (dilution, extraction, storage, transport), and NAAT assay utilized
30 (including LOD), allowing the field to clearly define the tradeoffs required to sufficiently bring SARS-CoV-
31 2 testing to scale.

32

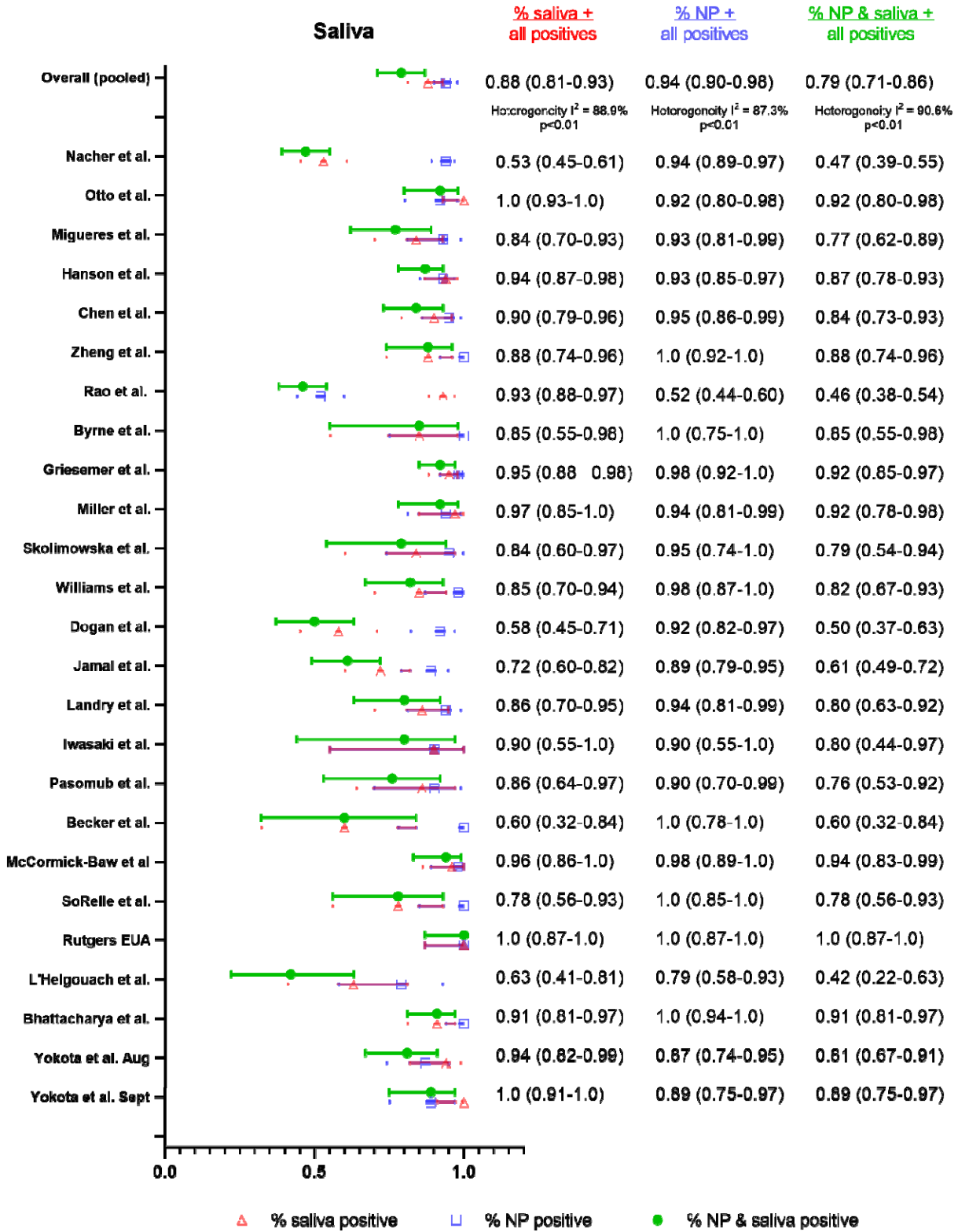
33 Financial Support: none

34 Potential Conflicts of Interests: All authors have no conflicts of interest to declare.

35

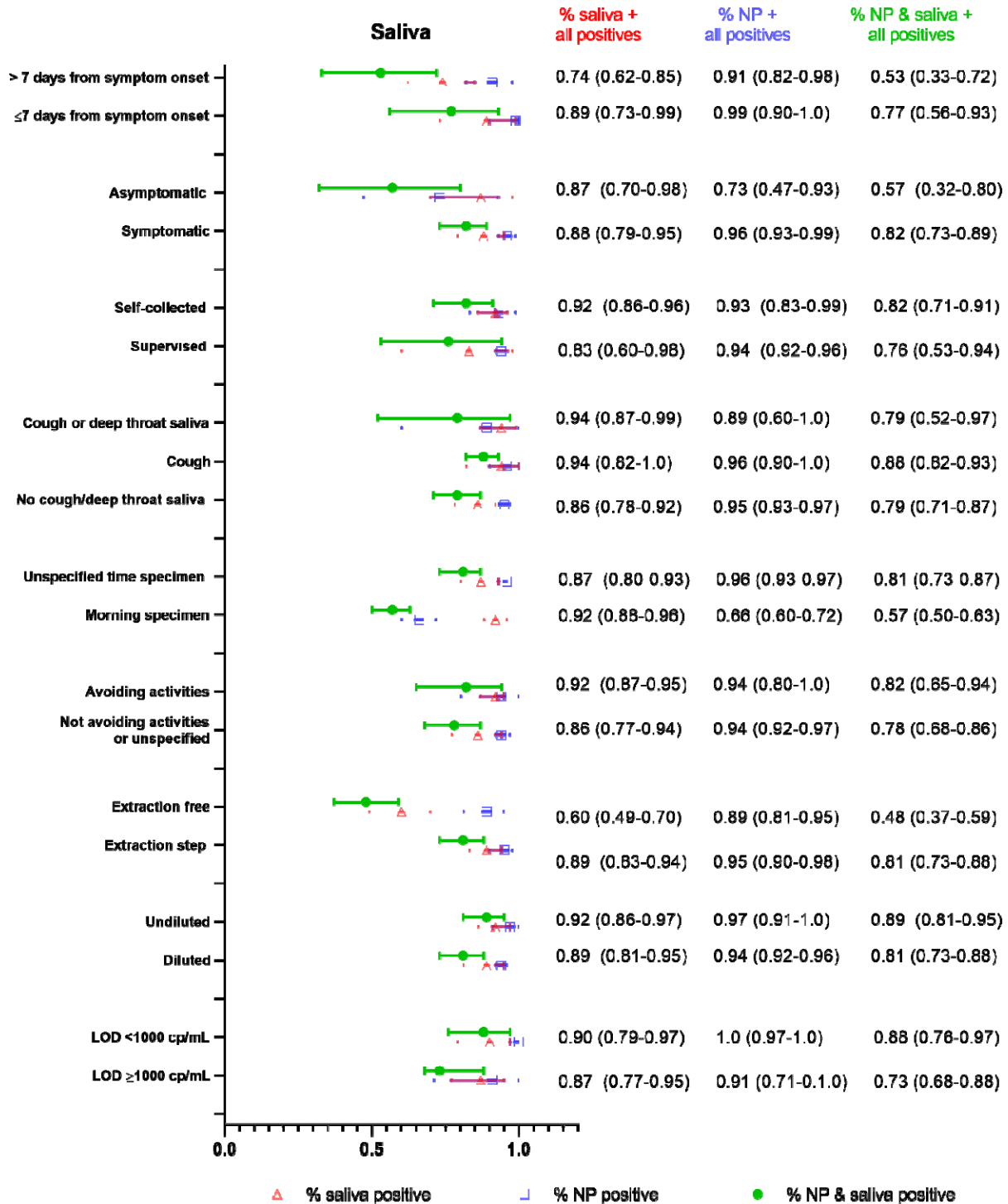
36

It is made available under a [CC-BY-ND 4.0 International license](https://creativecommons.org/licenses/by-nd/4.0/).



1 Figure 1: Summary forest plot of individual studies assessing saliva

It is made available under a [CC-BY-ND 4.0 International license](https://creativecommons.org/licenses/by-nd/4.0/).

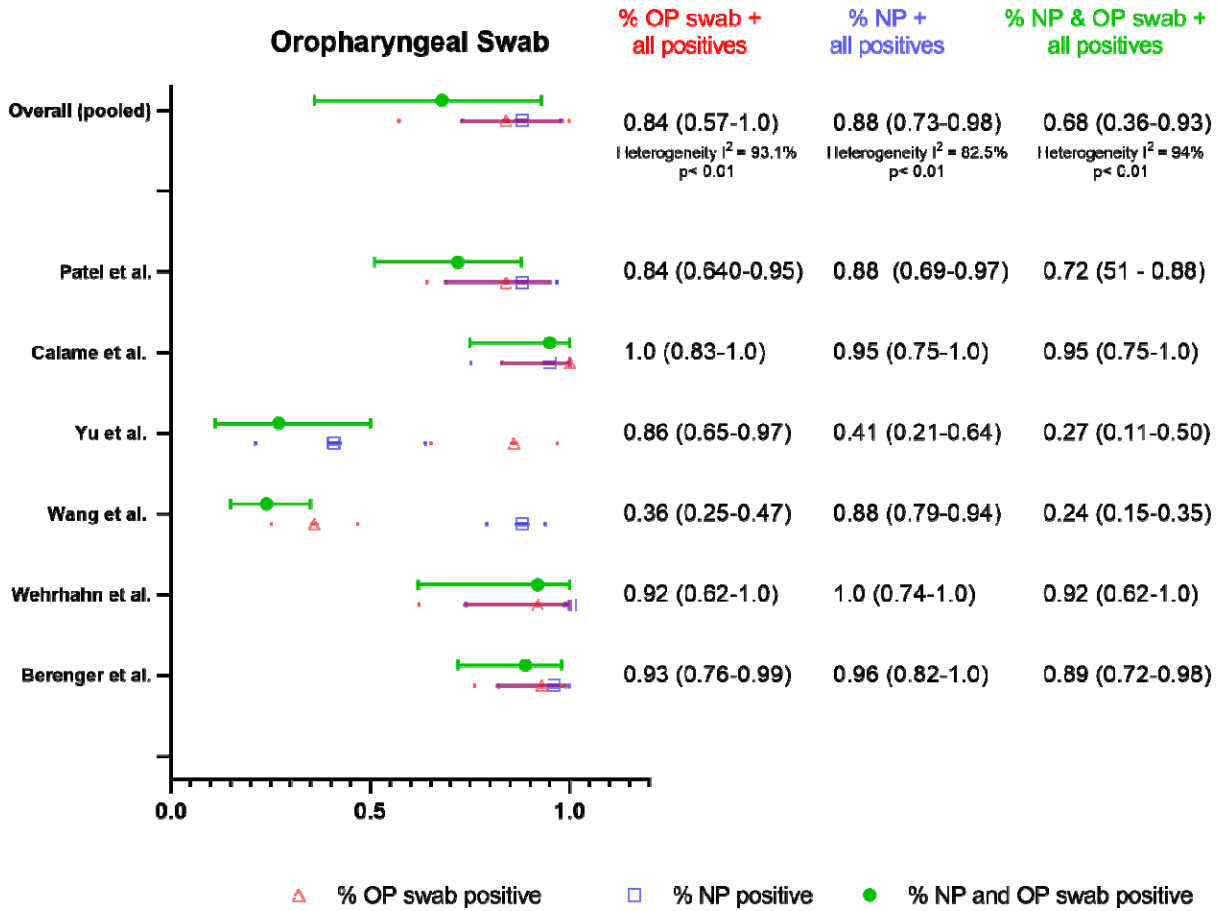


1 Figure 2: Summary forest plot of sub-group data from saliva sampling for different clinical populations,
 2 and collection as well as processing procedures.

3

4

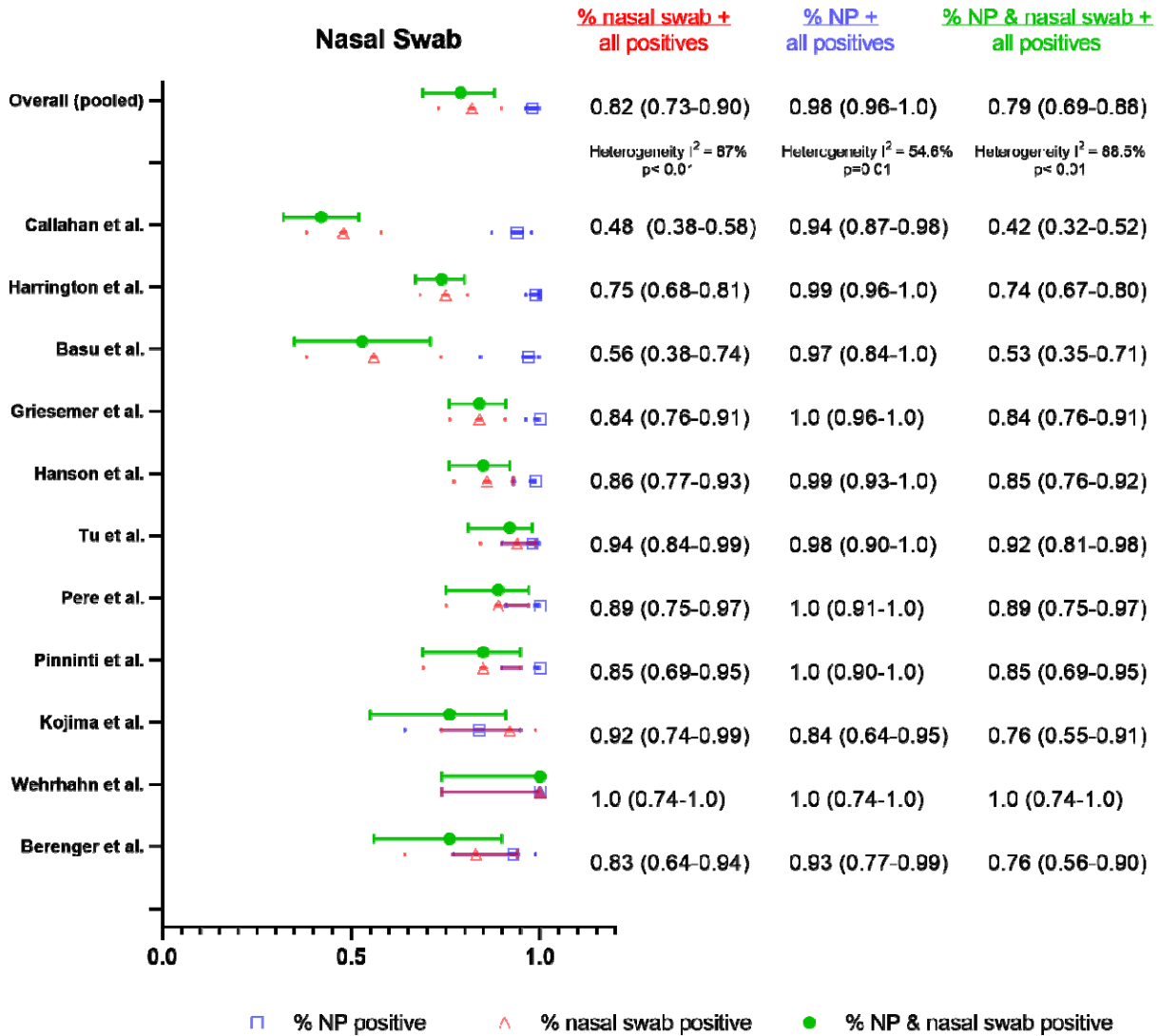
It is made available under a [CC-BY-ND 4.0 International license](https://creativecommons.org/licenses/by-nd/4.0/) .



1 Fig. 3: Summary forest plot of individual studies assessing oropharyngeal swabs

2
3
4
5
6
7
8
9
10
11
12

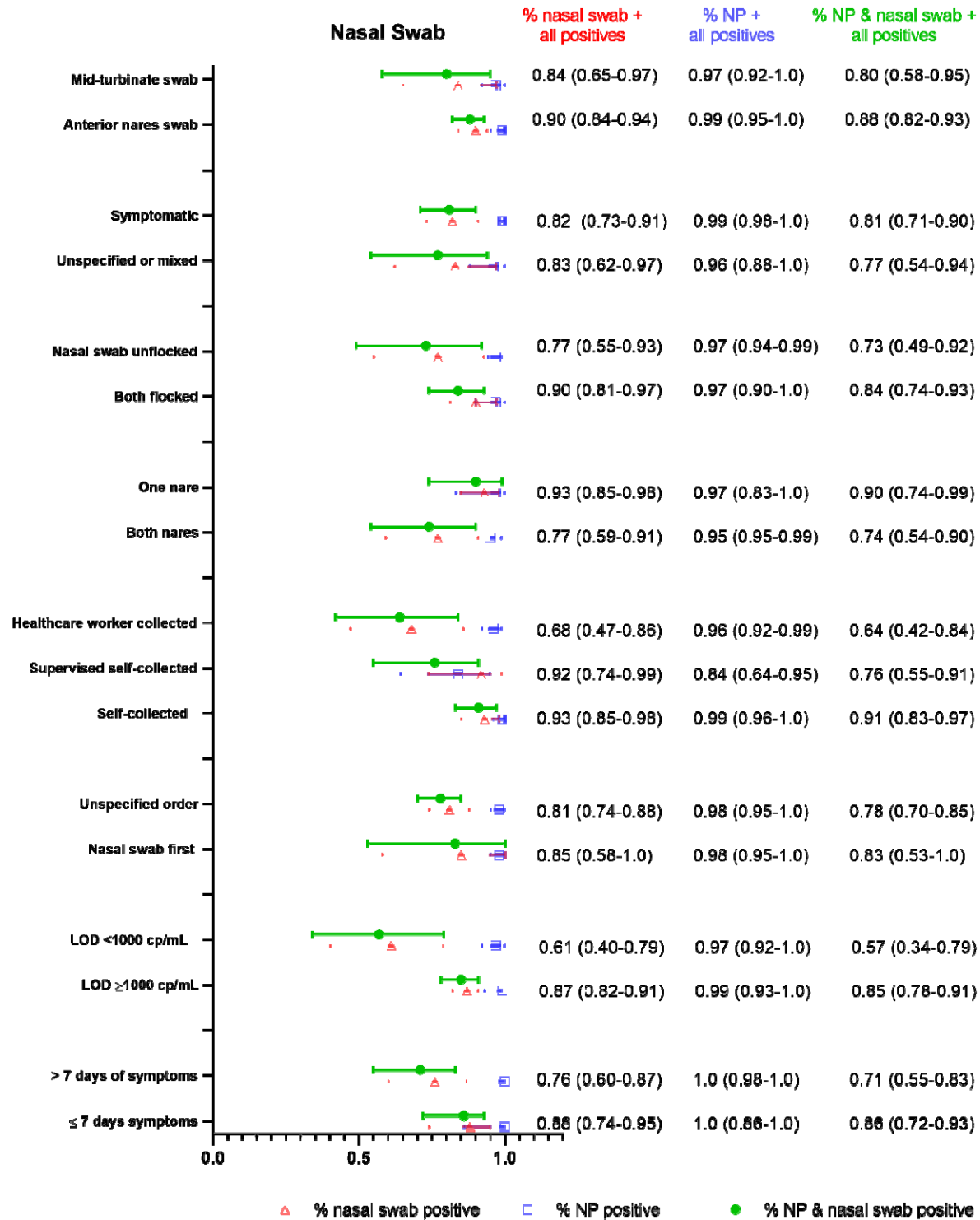
It is made available under a [CC-BY-ND 4.0 International license](https://creativecommons.org/licenses/by-nd/4.0/).



1
2
3
4
5
6
7
8
9

Fig. 4: Summary forest plot of individual studies assessing nasal swabs

It is made available under a [CC-BY-ND 4.0 International license](https://creativecommons.org/licenses/by-nd/4.0/).

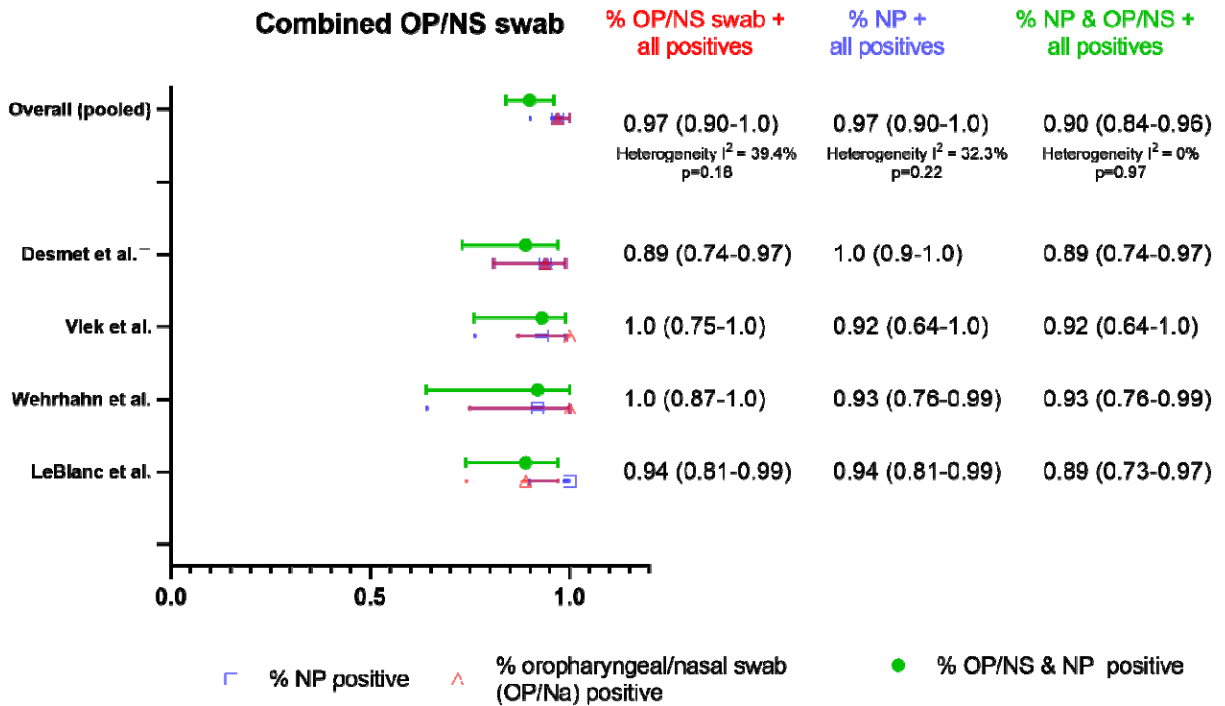


1

2 Fig. 5: Summary forest plot of sub-group data from nasal swab sampling for different clinical
 3 populations, and collection as well as processing procedures.

4

1



2

3

4 Fig. 6: Summary forest plot of individual studies assessing oropharyngeal/nasal swab sampling

5

6

7

8

9

10

11

12

13

14

15

1
2
3
4
5
6
7
8
9
10
11
12
13
14
15
16
17
18
19
20
21
22
23
24
25
26
27
28
29
30
31
32

Supplementary Methods:

Example search method employed in systematic review and meta-analysis:

The following strategy was used in Medline/Pubmed to identify articles providing a quantitative evaluation of diagnostic tests by specimen type: (*“COVID-19 diagnostic testing”*[MeSH Supplementary Concept] AND “Coronavirus Infection” [MeSH Major Topic] AND [“saliva”[MeSH Major Topic] OR “nose” [MeSH Major Topic] OR “nasal” “oropharynx” [MeSH Major Topic] OR “oropharyngeal” OR “oral” OR “nasopharynx” [MeSH Major Topic] OR “nasopharyngeal”]. We also searched the grey literature via Google Scholar as well as Medrxiv and bioRxiv via search terms that included a combination of subject headings (when applicable) and text-words for the concepts: (1) Sample type (“saliva” OR “oral” OR “oropharyngeal” OR “nasopharyngeal” OR “nasal” OR “swab”); (2) Diagnosis and (3) Disease (“SARS-COV-2” OR “COVID”).

1 Supplementary Table 1: Risk of bias in saliva studies

| Ref. | Study | Risk of bias | | | Flow and Timing | Applicability concerns | | |
|------|----------------------|-------------------|------------|--------------------|-----------------|------------------------|------------|--------------------|
| | | Patient selection | Index Test | Reference Standard | | Patient selection | Index Test | Reference Standard |
| (22) | McCormick-Baw et al. | U | L | L | L | L | L | L |
| (23) | Becker et al. | H | L | L | L | H | H | H |
| (24) | Pasomub et al. | U | L | L | L | L | L | L |
| (25) | Iwasaki et al. | U | L | L | L | L | L | L |
| (21) | SoRelle et al. | U | L | L | L | L | L | L |
| (34) | Zheng et al. | H | L | L | L | H | H | H |
| (26) | Landry et al. | U | L | L | L | L | L | L |
| (40) | Chen et al. | H | L | L | L | H | H | H |
| (27) | Jamal et al. | H | L | L | L | H | H | H |
| (28) | Dogan et al. | U | L | L | L | L | L | L |
| (33) | Rao et al. | H | L | L | L | H | H | H |
| (29) | Williams et al. | U | L | L | L | L | L | L |
| (20) | Rutgers EUA | H | L | L | L | H | H | H |
| (30) | Skolimowska et al. | U | L | L | L | L | L | L |
| (19) | L'Helgouach et al. | H | L | L | L | H | H | H |
| (31) | Miller et al. | U | L | L | L | L | L | L |
| (18) | Bhattacharya et al. | U | L | L | L | L | L | L |
| (17) | Yokota et al. | H | L | L | L | H | H | H |
| (16) | Yokota et al. | U | L | L | L | L | L | L |
| (32) | Griesemer et al. | U | L | L | L | L | L | L |
| (39) | Byrne et al. | U | L | L | L | L | L | L |
| (36) | Migueres et al. | U | L | L | L | L | L | L |
| (35) | Hanson et al. | U | L | L | L | L | L | L |
| (37) | Otto et al. | U | L | L | L | L | L | L |
| (38) | Nacher et al. | U | L | L | L | L | L | L |

2 L = low risk, U = unclear risk, H = high risk

3

4

5

6

7

8

9

10

11

1 Supplementary Table 2: Risk of bias in OP swab studies

| Ref. | Study | Risk of bias | | | | Applicability concerns | | |
|------------|-----------------|-------------------|------------|--------------------|-----------------|------------------------|------------|--------------------|
| | | Patient selection | Index Test | Reference Standard | Flow and Timing | Patient selection | Index Test | Reference Standard |
| Oral swabs | | | | | | | | |
| (54) | Berenger et al. | H | L | L | L | H | L | L |
| (59) | Wehrhahn et al. | U | L | L | L | L | L | L |
| (55) | Wang et al. | H | L | L | L | H | L | L |
| (56) | Yu et al. | H | L | L | L | H | L | L |
| (57) | Calame et al. | H | L | L | L | H | L | L |
| (58) | Patel et al. | U | L | L | U | L | L | L |

2 L = low risk, U = unclear risk, H = high risk

3

4 Supplementary Table 3: Risk of bias in nasal swab studies

| Ref. | Study | Risk of bias | | | | Applicability concerns | | |
|--|-------------------|-------------------|------------|--------------------|-----------------|------------------------|------------|--------------------|
| | | Patient selection | Index Test | Reference Standard | Flow and Timing | Patient selection | Index Test | Reference Standard |
| (54) | Berenger et al. | U | L | L | L | L | L | L |
| (59) | Wehrhahn et al. | U | L | L | H | L | L | L |
| (63) | Kojima et al. | U | L | L | L | H | L | L |
| (67) | Pinninti et al. | H | L | L | L | H | L | L |
| (66) | Pere et al. | U | L | L | L | L | L | L |
| (62) | Tu et al. | U | L | L | L | L | L | L |
| (35) | Hanson et al. | U | L | L | L | L | L | L |
| (32) | Griesemer et al. | U | L | L | L | L | L | L |
| (64) | Basu et al. | U | L | L | L | L | L | L |
| (65) | Harrington et al. | L | L | L | L | L | L | L |
| (68) | Callahan et al. | U | L | L | L | L | L | L |
| Combined oropharyngeal and nasal swabs | | | | | | | | |
| (72) | LeBlanc et al. | U | L | L | U | L | L | L |
| (59) | Wehrhahn et al. | U | L | L | L | L | L | L |
| (71) | Vlek et al. | U | L | L | L | L | L | L |
| (73) | Desmet et al. | U | L | L | L | L | L | L |

5 L = low risk, U = unclear risk, H = high risk

6

7

8

1

2 Supplementary Table 4: Saliva collection procedures specified in methodology for meta-analysis studies

| | n/25 total studies (%) |
|---|------------------------|
| Coughing before collection (34, 37, 40) | 3 (12%) |
| Drooling or spitting (16–32, 35, 36, 38, 39, 51) | 22 (88%) |
| Specified deep throat or posterior oropharyngeal (33) | 2 (8%) |
| Avoiding food, drink, brushing teeth (22, 23, 26, 31–34, 40) | 10 (40%) |
| Morning submission (33, 40) | 2 (8%) |
| Nucleic acid extraction free (19, 28) | 2 (8%) |
| Diluted (16, 17, 23–25, 27–32, 35, 37, 40) | 14 (56%) |
| Undiluted (22, 26) | 2 (8%) |
| Assay LOD < 1000 copies/mL (20, 21, 24, 34, 39) | 5 (20%) |
| Assay LOD ≥ 1000 copies/mL (23, 26, 27, 31–33, 51) | 7 (28%) |
| Self-collection (16, 17, 20, 25–27, 29, 30, 33, 34, 37, 39, 40) | 13 (52%) |
| Supervised or HCW collected saliva (22, 28, 31, 35, 38) | 5 (20%) |
| Asymptomatic patients (16, 19, 33) | 6 (24%) |
| Symptomatic patients (17, 18, 21–23, 25, 27, 28, 34, 35, 37, 39, 40) | 13 (52%) |

3

4

5

6

7

8

9

10

11

12

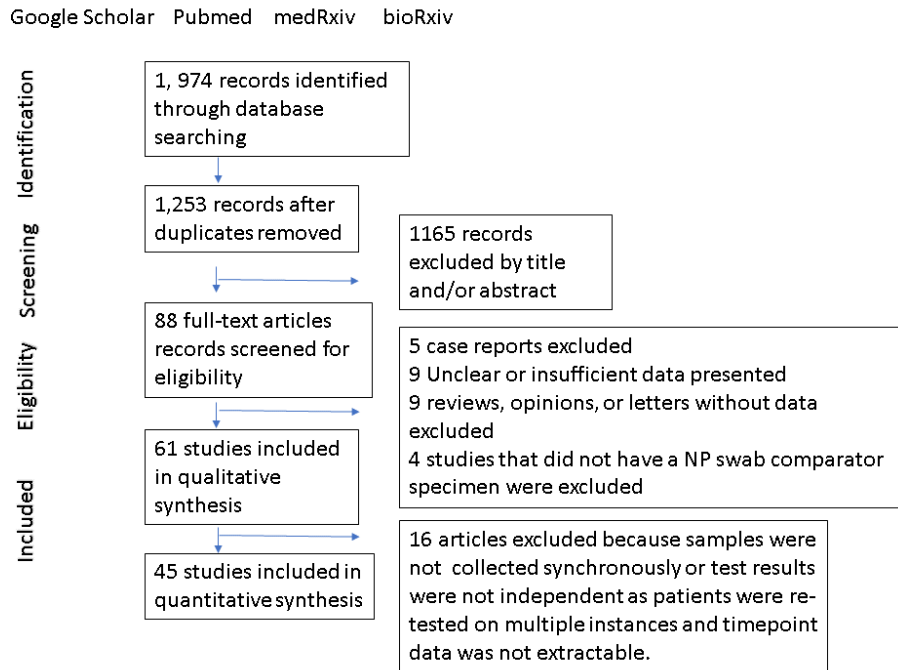
1
2
3
4

Supplementary Table 5: Nasal swab collection procedures specified in methodology for meta-analysis studies

| | n/11 total studies (%) |
|---|------------------------|
| Nasal swab first before NP swab (35, 59, 62, 68) | 4 (36%) |
| Anterior nares swab (35, 62) | 10 (91%) |
| Mid-turbinate nares swabs (54, 59, 63, 66–68) | 6 (55%) |
| Both swabs flocked (63, 66) | 2 (18%) |
| Nasal swab unflocked in comparison to flocked NP swab (35, 54, 59, 64, 68) | 5 (45%) |
| Both nares (35, 54, 62, 64, 67, 68) | 6 (56%) |
| One nare (59, 63, 66) | 3 (27%) |
| Assay LOD < 1000 copies/mL (64, 65, 68) | 3 (27%) |
| Assay LOD ≥ 1000 copies/mL (32, 54, 59, 63, 66, 67) | 6 (55%) |
| Self-collected nasal swab (35, 59, 62) | 3 (27%) |
| Supervised nasal swab collection (63) | 1 (9.1%) |
| HCW collected saliva (54, 64, 67, 68) | 4 (36%) |
| Symptomatic patients (35, 62, 64–67) | 6 (55%) |

5
6
7
8
9
10
11
12
13

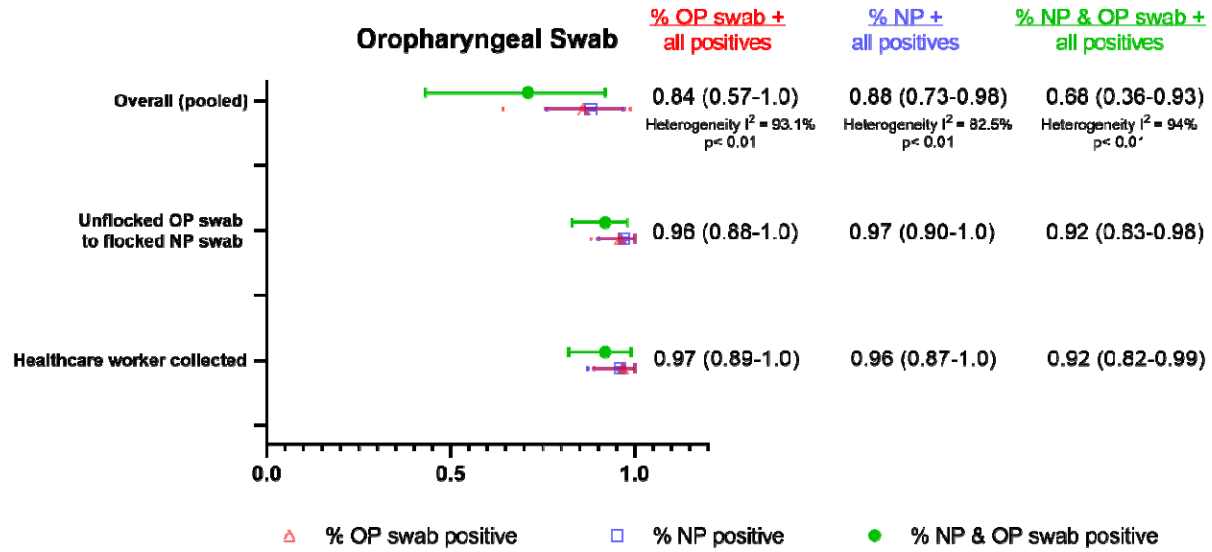
1
2
3



4
5
6
7
8
9
10
11
12
13
14
15
16

Supplementary Fig. 1: Study retrieval diagram

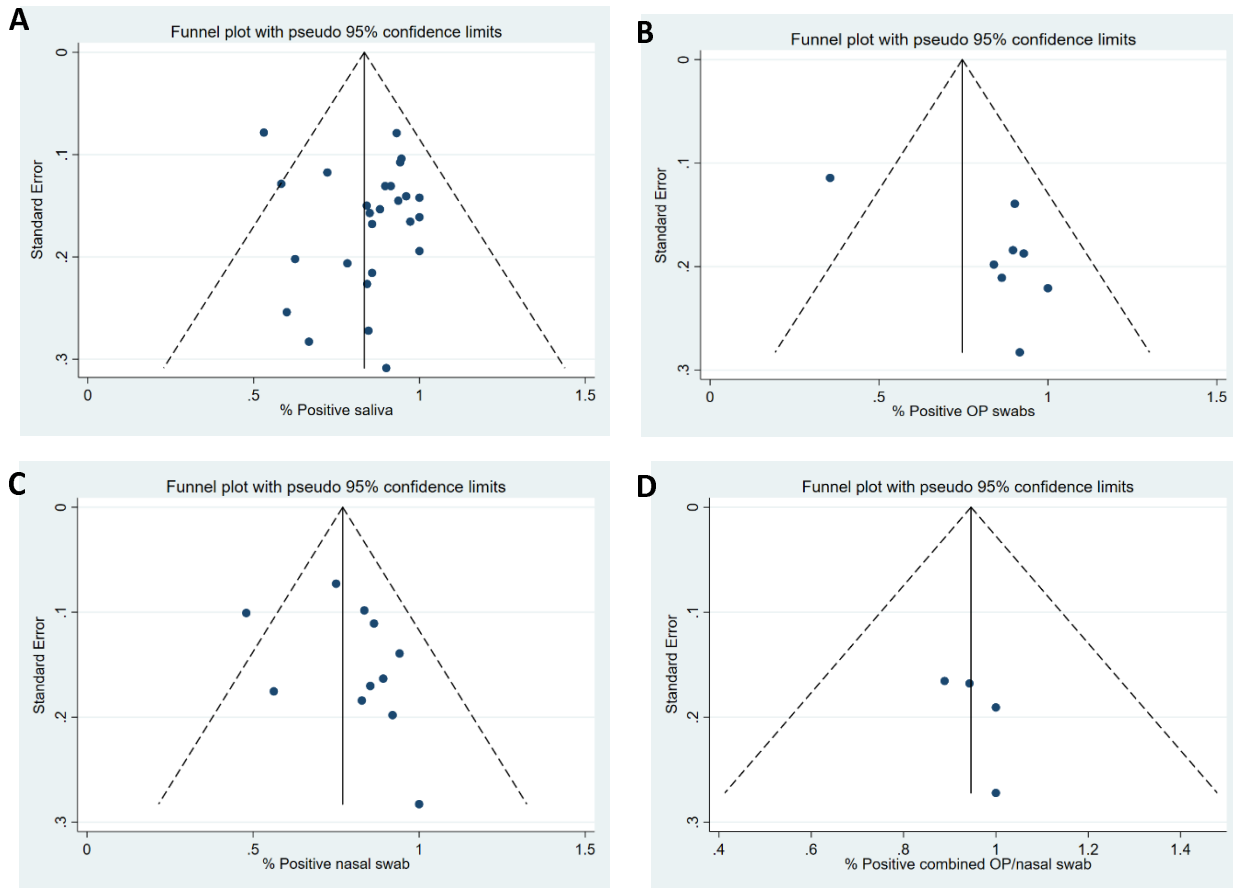
1
2



3
4
5
6
7
8
9
10
11
12
13
14
15
16

Supplementary Fig. 2: Summary forest plot of sub-group data from OP swabs

It is made available under a [CC-BY-ND 4.0 International license](https://creativecommons.org/licenses/by-nd/4.0/).



2

3 Supplementary Fig. 3: Funnel plots for saliva, OP, nasal, and OP/nasal swabs studies respectively (A-D).

4

5

6

7

8

9

10

11

12

13

14

1

2 Supplementary File: PRISMA Checklist

| Section/topic | # | Checklist item | Reported on page # |
|------------------------------------|----|---|--------------------|
| TITLE | | | |
| Title | 1 | Identify the report as a systematic review, meta-analysis, or both. | 1 |
| ABSTRACT | | | |
| Structured summary | 2 | Provide a structured summary including, as applicable: background; objectives; data sources; study eligibility criteria, participants, and interventions; study appraisal and synthesis methods; results; limitations; conclusions and implications of key findings; systematic review registration number. | 2 |
| INTRODUCTION | | | |
| Rationale | 3 | Describe the rationale for the review in the context of what is already known. | 3 |
| Objectives | 4 | Provide an explicit statement of questions being addressed with reference to participants, interventions, comparisons, outcomes, and study design (PICOS). | 4 |
| METHODS | | | |
| Protocol and registration | 5 | Indicate if a review protocol exists, if and where it can be accessed (e.g., Web address), and, if available, provide registration information including registration number. | 4 |
| Eligibility criteria | 6 | Specify study characteristics (e.g., PICOS, length of follow-up) and report characteristics (e.g., years considered, language, publication status) used as criteria for eligibility, giving rationale. | 4 |
| Information sources | 7 | Describe all information sources (e.g., databases with dates of coverage, contact with study authors to identify additional studies) in the search and date last searched. | 4 |
| Search | 8 | Present full electronic search strategy for at least one database, including any limits used, such that it could be repeated. | Suppl, Methods |
| Study selection | 9 | State the process for selecting studies (i.e., screening, eligibility, included in systematic review, and, if applicable, included in the meta-analysis). | 4 |
| Data collection process | 10 | Describe method of data extraction from reports (e.g., piloted forms, independently, in duplicate) and any processes for obtaining and confirming data from investigators. | 4-5 |
| Data items | 11 | List and define all variables for which data were sought (e.g., PICOS, funding sources) and any assumptions and simplifications made. | 4-5 |
| Risk of bias in individual studies | 12 | Describe methods used for assessing risk of bias of individual studies (including specification of whether this was done at the study or outcome level), and how this information is to be used in any data synthesis. | 5 |
| Summary measures | 13 | State the principal summary measures (e.g., risk ratio, difference in means). | 5 |
| Synthesis of results | 14 | Describe the methods of handling data and combining results of studies, if done, including measures of consistency (e.g., I^2) for each meta-analysis. | 5 |

3

| Section/topic | # | Checklist item | Reported on page # |
|-------------------------------|----|--|----------------------|
| Risk of bias across studies | 15 | Specify any assessment of risk of bias that may affect the cumulative evidence (e.g., publication bias, selective reporting within studies). | 5 |
| Additional analyses | 16 | Describe methods of additional analyses (e.g., sensitivity or subgroup analyses, meta-regression), if done, indicating which were pre-specified. | 5 |
| RESULTS | | | |
| Study selection | 17 | Give numbers of studies screened, assessed for eligibility, and included in the review, with reasons for exclusions at each stage, ideally with a flow diagram. | 6 |
| Study characteristics | 18 | For each study, present characteristics for which data were extracted (e.g., study size, PICOS, follow-up period) and provide the citations. | 6-11 |
| Risk of bias within studies | 19 | Present data on risk of bias of each study and, if available, any outcome level assessment (see item 12). | 11, Suppl Tables 1-3 |
| Results of individual studies | 20 | For all outcomes considered (benefits or harms), present, for each study: (a) simple summary data for each intervention group (b) effect estimates and confidence intervals, ideally with a forest plot. | 6-11, Fig. 1-6 |
| Synthesis of results | 21 | Present results of each meta-analysis done, including confidence intervals and measures of consistency. | 6-11, Fig.1-6 |
| Risk of bias across studies | 22 | Present results of any assessment of risk of bias across studies (see Item 15). | Supp. Fig. 3 |
| Additional analysis | 23 | Give results of additional analyses, if done (e.g., sensitivity or subgroup analyses, meta-regression [see Item 16]). | 6-11 |
| DISCUSSION | | | |
| Summary of evidence | 24 | Summarize the main findings including the strength of evidence for each main outcome; consider their relevance to key groups (e.g., healthcare providers, users, and policy makers). | 11-13 |
| Limitations | 25 | Discuss limitations at study and outcome level (e.g., risk of bias), and at review-level (e.g., incomplete retrieval of identified research, reporting bias). | 12 |
| Conclusions | 26 | Provide a general interpretation of the results in the context of other evidence, and implications for future research. | 13 |
| FUNDING | | | |
| Funding | 27 | Describe sources of funding for the systematic review and other support (e.g., supply of data); role of funders for the systematic review. | 13 |

References:

1. Food and Drug Administration, Center for Devices and Radiological Health. FAQs on Testing for SARS-CoV-2. <https://www.fda.gov/medical-devices/coronavirus-covid-19-and-medical-devices/faqs-testing-sars-cov-2>. Accessed on October 12, 2020.
2. Centers for Disease Control and Prevention. Information for Laboratories about Coronavirus (COVID-19). <https://www.cdc.gov/coronavirus/2019-ncov/lab/guidelines-clinical-specimens.html>. Accessed on October 4, 2020.
3. Wong SCY, Tse H, Siu HK, Kwong TS, Chu MY, Yau FYS, Cheung IYY, Tse CWS, Poon KC, Cheung KC, Wu TC, Chan JWM, Cheuk W, Lung DC. 2020. Posterior Oropharyngeal Saliva for the Detection of Severe Acute Respiratory Syndrome Coronavirus 2 (SARS-CoV-2). *Clinical Infectious Diseases* <https://doi.org/10.1093/cid/ciaa797>.
4. Zhou P, Yang X-L, Wang X-G, Hu B, Zhang L, Zhang W, Si H-R, Zhu Y, Li B, Huang C-L, Chen H-D, Chen J, Luo Y, Guo H, Jiang R-D, Liu M-Q, Chen Y, Shen X-R, Wang X, Zheng X-S, Zhao K, Chen Q-J, Deng F, Liu L-L, Yan B, Zhan F-X, Wang Y-Y, Xiao G-F, Shi Z-L. 2020. A pneumonia outbreak associated with a new coronavirus of probable bat origin. *Nature* 579:270–273.
5. Li W, Moore MJ, Vasilieva N, Sui J, Wong SK, Berne MA, Somasundaran M, Sullivan JL, Luzuriaga K, Greenough TC, Choe H, Farzan M. 2003. Angiotensin-converting enzyme 2 is a functional receptor for the SARS coronavirus. *Nature* 426:450–454.

6. Xu J, Li Y, Gan F, Du Y, Yao Y. 2020. Salivary Glands: Potential Reservoirs for COVID-19 Asymptomatic Infection. *Journal of Dental Research*
<https://doi.org/10.1177/0022034520918518>.
7. Xu H, Zhong L, Deng J, Peng J, Dan H, Zeng X, Li T, Chen Q. 2020. High expression of ACE2 receptor of 2019-nCoV on the epithelial cells of oral mucosa. *International Journal of Oral Science* 12:1–5.
8. Liu L, Wei Q, Alvarez X, Wang H, Du Y, Zhu H, Jiang H, Zhou J, Lam P, Zhang L, Lackner A, Qin C, Chen Z. 2011. Epithelial cells lining salivary gland ducts are early target cells of severe acute respiratory syndrome coronavirus infection in the upper respiratory tracts of rhesus macaques. *J Virol* 85:4025–4030.
9. Chen L, Zhao J, Peng J, Li X, Deng X, Geng Z, Shen Z, Guo F, Zhang Q, Jin Y, Wang L, Wang S. 2020. Detection of SARS-CoV-2 in Saliva and Characterization of Oral Symptoms in COVID-19 Patients. *Cell Prolif* <https://doi.org/10.1111/cpr.12923>.
10. HealthPulse. Nasal Swab Instructions. <https://healthpulsenow.org/collect>. Accessed on October 29, 2020.
11. Bauchner H, Golub RM, Zylke J. 2020. Editorial Concern—Possible Reporting of the Same Patients With COVID-19 in Different Reports. *JAMA* 323:1256.
12. Mittal A, Gupta A, Kumar S, Surjit M, Singh B, Soneja M, Soni KD, Khan AR, Singh K, Naik S, Kumar A, Aggarwal R, Nischal N, Sinha S, Trikha A, Wig N. 2020. Gargle lavage as a viable alternative to swab for detection of SARS-CoV-2. *Indian J Med Res* 152:77–81.

13. Wang W-K, Chen S-Y, Liu I-J, Chen Y-C, Chen H-L, Yang C-F, Chen P-J, Yeh S-H, Kao C-L, Huang L-M, Hsueh P-R, Wang J-T, Sheng W-H, Fang C-T, Hung C-C, Hsieh S-M, Su C-P, Chiang W-C, Yang J-Y, Lin J-H, Hsieh S-C, Hu H-P, Chiang Y-P, Wang J-T, Yang P-C, Chang S-C. Detection of SARS-associated Coronavirus in Throat Wash and Saliva in Early Diagnosis. *Emerging Infectious Diseases Journal*
<https://doi.org/10.3201/eid1007.031113>.
14. Whiting PF, Rutjes AWS, Westwood ME, Mallett S, Deeks JJ, Reitsma JB, Leeflang MMG, Sterne JAC, Bossuyt PMM. 2011. QUADAS-2: A Revised Tool for the Quality Assessment of Diagnostic Accuracy Studies. *Annals of Internal Medicine* 155:529–536.
15. Nyaga VN, Arbyn M, Aerts M. 2014. Metaprop: a Stata command to perform meta-analysis of binomial data. *Archives of Public Health* 72:39.
16. Yokota I, Shane PY, Okada K, Unoki Y, Yang Y, Inao T, Sakamaki K, Iwasaki S, Hayasaka K, Sugita J, Nishida M, Fujisawa S, Teshima T. 2020. Mass screening of asymptomatic persons for SARS-CoV-2 using saliva. *Clinical Infectious Diseases*
<https://doi.org/10.1093/cid/ciaa1388>.
17. Yokota I, Hattori T, Shane PY, Konno S, Nagasaka A, Takeyabu K, Fujisawa S, Nishida M, Teshima T. 2020. Equivalent SARS-CoV-2 viral loads between nasopharyngeal swab and saliva in symptomatic patients. *medRxiv* <https://doi.org/10.1101/2020.09.01.20186254>.
18. Bhattacharya DD, Parai DD, Rout UK, Nanda RR, Kanungo DS, Dash DGC, Palo DSK, Giri DS, Choudhary HR, Kshatri DJS, Turuk DJ, Mishra DB, Dash DS, Pati DS. 2020.

Saliva as a potential clinical specimen for diagnosis of SARS-CoV-2. medRxiv

<https://doi.org/10.1101/2020.09.11.20192591>.

19. L'Helgouach N, Champigneux P, Santos-Schneider F, Molina L, Espeut J, Alali M, Baptiste J, Cardeur L, Dubuc B, Foulongne V, Galtier F, Makinson A, Marin G, Picot M-C, Prieux-Lejeune A, Quenot M, Checa-Robles FJ, Salvétat N, Vetter D, Reynes J, Molina F. 2020. EasyCOV \square : LAMP based rapid detection of SARS-CoV-2 in saliva. medRxiv <https://doi.org/10.1101/2020.05.30.20117291>.
18. Rutgers University. Accelerated Emergency Use Authorization (EUA) Summary SARS-CoV-2 Assay (Rutgers Clinical Genomics Laboratory). <https://www.fda.gov/media/136875/download>. Accessed on October 2nd, 2020.
21. SoRelle J, Mahimmainathan L, McCormick-Baw C, Cavuoti D, Lee F, Bararia A, Thomas A, Sarode R, Clark AE, Muthukumar A. 2020. Evaluation of symptomatic patient saliva as a sample type for the Abbott ID NOW COVID-19 assay. medRxiv <https://doi.org/10.1101/2020.06.01.20119198>.
22. McCormick-Baw C, Morgan K, Gaffney D, Cazares Y, Jaworski K, Byrd A, Molberg K, Cavuoti D. 2020. Saliva as an Alternate Specimen Source for Detection of SARS-CoV-2 in Symptomatic Patients Using Cepheid Xpert Xpress SARS-CoV-2. J Clin Microbiol <https://doi.org/10.1128/JCM.01109-20>.
23. Becker D, Sandoval E, Amin A, Hoff PD, Diets A, Leonetti N, Lim YW, Elliott C, Laurent L, Grzymiski J, Lu J. 2020. Saliva is less sensitive than nasopharyngeal swabs for COVID-

19 detection in the community setting. medRxiv

<https://doi.org/10.1101/2020.05.11.20092338>.

24. Pasomsub E, Watcharananan SP, Boonyawat K, Janchompoo P, Wongtabtim G, Sukswan W, Sungkanuparph S, Phuphuakrat A. 2020. Saliva sample as a non-invasive specimen for the diagnosis of coronavirus disease 2019: a cross-sectional study. *Clinical Microbiology and Infection* <https://doi.org/10.1016/j.cmi.2020.05.001>.
25. Iwasaki S, Fujisawa S, Nakakubo S, Kamada K, Yamashita Y, Fukumoto T, Sato K, Oguri S, Taki K, Senjo H, Sugita J, Hayasaka K, Konno S, Nishida M, Teshima T. 2020. Comparison of SARS-CoV-2 detection in nasopharyngeal swab and saliva. *J Infect* 81:e145–e147.
26. Landry ML, Criscuolo J, Peaper DR. 2020. Challenges in use of saliva for detection of SARS CoV-2 RNA in symptomatic outpatients. *Journal of Clinical Virology* 130:104567.
27. Jamal AJ, Mozafarihashjin M, Coomes E, Powis J, Li AX, Paterson A, Anceva-Sami S, Barati S, Crowl G, Faheem A, Farooqi L, Khan S, Prost K, Poutanen S, Taylor M, Yip L, Zhong XZ, McGeer AJ, Mubareka S, Investigators TIBDNC-19, Coleman BL, Chen D, Farshait N, Gold W, Kandel CE, Katz K, Kozak R, Mazzulli T, Muller M, Opavsky A, Ostrowski M, Plevneshi A, Rau N, Ricciuto D, Richardson D, Rose D, Sales V, Walmsley S. 2020. Sensitivity of Nasopharyngeal Swabs and Saliva for the Detection of Severe Acute Respiratory Syndrome Coronavirus 2. *Clin Infect Dis* <https://doi.org/10.1093/cid/ciaa848>.
28. Dogan OA, Kose B, Agaoglu NB, Yildiz J, Alkurt G, Demirkol YK, Irvem A, Dinler-Doganay G, Doganay L. 2020. Does sampling saliva increase detection of SARS-CoV-2 by

RT-PCR? Comparing saliva with oro-nasopharyngeal swabs. medRxiv

<https://doi.org/10.1101/2020.07.26.20158618>.

29. Williams E, Bond K, Zhang B, Putland M, Williamson DA. 2020. Saliva as a Noninvasive Specimen for Detection of SARS-CoV-2. *Journal of Clinical Microbiology*

<https://doi.org/10.1128/JCM.00776-20>.

30. Skolimowska K, Rayment M, Jones R, Madona P, Moore LSP, Randell P. 2020. Non-invasive saliva specimens for the diagnosis of COVID-19: caution in mild outpatient cohorts with low prevalence. *Clinical Microbiology and Infection*

<https://doi.org/10.1016/j.cmi.2020.07.015>.

31. Miller M, Jansen M, Bisignano A, Mahoney S, Wechsberg C, Albanese N, Castillo L, Farinas P, Lazarin GA, Jaremko M. 2020. Validation of a Self-administrable, Saliva-based RT-qPCR Test Detecting SARS-CoV-2. medRxiv

<https://doi.org/10.1101/2020.06.05.20122721>.

32. Griesemer SB, Van Slyke G, Ehrbar D, Strle K, Yildirim T, Centurioni DA, Walsh AC, Chang AK, Waxman MJ, St. George K. 2020. Evaluation of specimen types and saliva stabilization solutions for SARS-CoV-2 testing. medRxiv

<https://doi.org/10.1101/2020.06.16.20133041>.

33. Rao M, Rashid FA, Sabri FSAH, Jamil NN, Zain R, Hashim R, Amran F, Kok HT, Samad MAA, Ahmad N. 2020. Comparing nasopharyngeal swab and early morning saliva for the identification of SARS-CoV-2. *Clinical Infectious Diseases*

<https://doi.org/10.1093/cid/ciaa1156>.

34. Zheng S, Yu F, Fan J, Zou Q, Xie G, Yang X. Saliva as a Diagnostic Specimen for SARS-CoV-2 by a PCR-Based Assay: A Diagnostic Validity Study. SSRN <https://doi.org/10.2139/ssrn.3543605>.
35. Hanson KE, Barker AP, Hillyard DR, Gilmore N, Barrett JW, Orlandi RR, Shakir SM. 2020. Self-Collected Anterior Nasal and Saliva Specimens versus Healthcare Worker-Collected Nasopharyngeal Swabs for the Molecular Detection of SARS-CoV-2. *Journal of Clinical Microbiology* <https://doi.org/10.1128/JCM.01824-20>.
36. Miguères M, Mengelle C, Dimeglio C, Didier A, Alvarez M, Delobel P, Mansuy J-M, Izopet J. 2020. Saliva sampling for diagnosing SARS-CoV-2 infections in symptomatic patients and asymptomatic carriers. *J Clin Virol* 130:104580.
37. Otto MP, Darles C, Valero E, Benner P, Dutasta F, Janvier F. 2020. Posterior oropharyngeal saliva for the detection of SARS-CoV-2. *Clin Infect Dis* <https://doi.org/10.1093/cid/ciaa1181>.
38. COVISAL Guyane, Nacher M, Demar M. 2020. Prospective comparison of saliva and nasopharyngeal swab sampling for mass screening for COVID-19. medRxiv <https://doi.org/10.1101/2020.09.23.20150961>.
39. Byrne RL, Kay GA, Kontogianni K, Brown L, Collins AM, Cuevas LE, Ferreira D, Fraser AJ, Garrod G, Hill H, Menzies S, Mitsi E, Owen SI, Williams CT, Hyder-Wright A, Adams ER, Cubas-Atienzar AI. 2020. Saliva offers a sensitive, specific and non-invasive alternative to upper respiratory swabs for SARS-CoV-2 diagnosis. medRxiv <https://doi.org/10.1101/2020.07.09.20149534>.

40. Chen JH-K, Yip CC-Y, Poon RW-S, Chan K-H, Cheng VC-C, Hung IF-N, Chan JF-W, Yuen K-Y, To KK-W. 2020. Evaluating the use of posterior oropharyngeal saliva in a point-of-care assay for the detection of SARS-CoV-2. *Emerging Microbes & Infections* 9:1356–1359.
41. To KK-W, Tsang OT-Y, Yip CC-Y, Chan K-H, Wu T-C, Chan JM-C, Leung W-S, Chik TS-H, Choi CY-C, Kandamby DH, Lung DC, Tam AR, Poon RW-S, Fung AY-F, Hung IF-N, Cheng VC-C, Chan JF-W, Yuen K-Y. 2020. Consistent Detection of 2019 Novel Coronavirus in Saliva. *Clin Infect Dis* 71:841–843.
42. To KK-W, Tsang OT-Y, Leung W-S, Tam AR, Wu T-C, Lung DC, Yip CC-Y, Cai J-P, Chan JM-C, Chik TS-H, Lau DP-L, Choi CY-C, Chen L-L, Chan W-M, Chan K-H, Ip JD, Ng AC-K, Poon RW-S, Luo C-T, Cheng VC-C, Chan JF-W, Hung IF-N, Chen Z, Chen H, Yuen K-Y. 2020. Temporal profiles of viral load in posterior oropharyngeal saliva samples and serum antibody responses during infection by SARS-CoV-2: an observational cohort study. *The Lancet Infectious Diseases* 20:565–574.
43. Leung EC, Chow VC, Lee MK, Lai RW. Deep throat saliva as an alternative diagnostic specimen type for the detection of SARS-CoV-2. *Journal of Medical Virology* <https://doi.org/10.1002/jmv.26258>.
44. Nagura-Ikeda M, Imai K, Tabata S, Miyoshi K, Murahara N, Mizuno T, Horiuchi M, Kato K, Imoto Y, Iwata M, Mimura S, Ito T, Tamura K, Kato Y. 2020. Clinical Evaluation of Self-Collected Saliva by Quantitative Reverse Transcription-PCR (RT-qPCR), Direct RT-qPCR, Reverse Transcription–Loop-Mediated Isothermal Amplification, and a Rapid

Antigen Test To Diagnose COVID-19. *Journal of Clinical Microbiology*

<https://doi.org/10.1128/JCM.01438-20>.

45. Kim SE, Lee JY, Lee A, Kim S, Park KH, Jung SI, Kang SJ, Oh TH, Kim UJ, Lee SY, Kee SJ, Jang HC. 2020. Viral Load Kinetics of SARS-CoV-2 Infection in Saliva in Korean Patients: a Prospective Multi-center Comparative Study. *J Korean Med Sci* 35:e287.
46. Azzi L, Carcano G, Gianfagna F, Grossi P, Gasperina DD, Genoni A, Fasano M, Sessa F, Tettamanti L, Carinci F, Maurino V, Rossi A, Tagliabue A, Baj A. 2020. Saliva is a reliable tool to detect SARS-CoV-2. *Journal of Infection* 81:e45–e50.
47. Fang Z, Zhang Y, Hang C, Ai J, Li S, Zhang W. 2020. Comparisons of viral shedding time of SARS-CoV-2 of different samples in ICU and non-ICU patients. *J Infect* 81:147–178.
48. Vogels CBF, Brackney D, Wang J, Kalinich CC, Ott I, Kudo E, Lu P, Venkataraman A, Tokuyama M, Moore AJ, Muenker MC, Casanovas-Massana A, Fournier J, Bermejo S, Campbell M, Datta R, Nelson A, Yale IMPACT Research Team, Dela Cruz C, Farhadian S, Ko A, Iwasaki A, Hui P, Liu C, Wyllie AL, Grubaugh N. 2020. SalivaDirect: Simple and sensitive molecular diagnostic test for SARS-CoV-2 surveillance. medRxiv <https://doi.org/10.1101/2020.08.03.20167791>.
49. Wyllie AL, Fournier J, Casanovas-Massana A, Campbell M, Tokuyama M, Vijayakumar P, Warren JL, Geng B, Muenker MC, Moore AJ, Vogels CBF, Petrone ME, Ott IM, Lu P, Venkataraman A, Lu-Culligan A, Klein J, Earnest R, Simonov M, Datta R, Handoko R, Naushad N, Sewanan LR, Valdez J, White EB, Lapidus S, Kalinich CC, Jiang X, Kim DJ, Kudo E, Linehan M, Mao T, Moriyama M, Oh JE, Park A, Silva J, Song E, Takahashi T,

- Taura M, Weizman O-E, Wong P, Yang Y, Bermejo S, Odio CD, Omer SB, Dela Cruz CS, Farhadian S, Martinello RA, Iwasaki A, Grubaugh ND, Ko AI. 2020. Saliva or Nasopharyngeal Swab Specimens for Detection of SARS-CoV-2. *New England Journal of Medicine* 383:1283–1286.
50. Teo AKJ, Choudhury Y, Tan IB, Cher CY, Chew SH, Wan ZY, Cheng LTE, Oon LLE, Tan MH, Chan KS, Hsu LY. 2020. Validation of Saliva and Self-Administered Nasal Swabs for COVID-19 Testing. medRxiv <https://doi.org/10.1101/2020.08.13.20173807>.
51. Han MS, Seong M-W, Kim N, Shin S, Cho SI, Park H, Kim TS, Park SS, Choi EH. Early Release - Viral RNA Load in Mildly Symptomatic and Asymptomatic Children with COVID-19, Seoul - Volume 26, Number 10—October 2020 - *Emerging Infectious Diseases journal* - CDC. *Emerging Infectious Diseases Journal* <https://doi.org/10.3201/eid2610.202449>.
52. Arnaout R, Lee RA, Lee GR, Callahan C, Yen CF, Smith KP, Arora R, Kirby JE. 2020. SARS-CoV2 Testing: The Limit of Detection Matters. bioRxiv <https://doi.org/10.1101/2020.06.02.131144>.
53. Chong CY, Kam K-Q, Li J, Maiwald M, Loo LH, Nadua KD, Tan NWH, Yung CF, Thoon KC. 2020. Saliva is not a useful diagnostic specimen in children with Coronavirus Disease 2019. *Clinical Infectious Diseases* <https://doi.org/10.1093/cid/ciaa1376>.
54. Berenger BM, Fonseca K, Schneider AR, Hu J, Zelyas N. 2020. Sensitivity of Nasopharyngeal, Nasal and Throat Swab for the Detection of SARS-CoV-2. medRxiv <https://doi.org/10.1101/2020.05.05.20084889>.

55. Wang X, Tan L, Wang X, Liu W, Lu Y, Cheng L, Sun Z. 2020. Comparison of nasopharyngeal and oropharyngeal swabs for SARS-CoV-2 detection in 353 patients received tests with both specimens simultaneously. *Int J Infect Dis* 94:107–109.
56. Yu C, Li L, Tuersun Y, Zhao X, Feng Q, Zhang T, Tay FR, Ma J. 2020. Oropharyngeal Secretion as Alternative for SARS-CoV-2 Detection. *J Dent Res* 99:1199–1205.
57. Calame A, Mazza L, Renzoni A, Kaiser L, Schibler M. 2020. Sensitivity of nasopharyngeal, oropharyngeal and nasal washes specimens for SARS-CoV-2 detection in the setting of sampling device shortage. medRxiv <https://doi.org/10.1101/2020.08.01.20166397>.
58. Patel MR, Carroll D, Ussery E, Whitham H, Elkins CA, Noble-Wang J, Rasheed JK, Lu X, Lindstrom S, Bowen V, Waller J, Armstrong G, Gerber S, Brooks JT. Performance of Oropharyngeal Swab Testing Compared With Nasopharyngeal Swab Testing for Diagnosis of Coronavirus Disease 2019—United States, January 2020–February 2020. *Clin Infect Dis* <https://doi.org/10.1093/cid/ciaa759>.
59. Wehrhahn MC, Robson J, Brown S, Bursle E, Byrne S, New D, Chong S, Newcombe JP, Siversten T, Hadlow N. 2020. Self-collection: An appropriate alternative during the SARS-CoV-2 pandemic. *J Clin Virol* 128:104417.
60. Abdollahi A, Shakoori A, Khoshnevis H, Arabzadeh M, Dehghan Manshadi SA, Mohammadnejad E, Ghasemi D, Safari Aboksari M, Alizadeh S, Mehrtash V, Eftekhari-Javadi A, Safaei M. 2020. Comparison of Patient-collected and Lab Technician-collected

Nasopharyngeal and Oropharyngeal Swabs for Detection of COVID-19 by RT-PCR. Iran J Pathol 15:313–319.

61. Kam K, Yung CF, Maiwald M, Chong CY, Soong HY, Loo LH, Tan NWH, Li J, Nadua KD, Thoon KC. 2020. Clinical Utility of Buccal Swabs for Severe Acute Respiratory Syndrome Coronavirus 2 Detection in Coronavirus Disease 2019–Infected Children. *Journal of Pediatric Infectious Diseases Society* 9:370–372.
62. Tu Y-P, Jennings R, Hart B, Cangelosi GA, Wood RC, Wehber K, Verma P, Vojta D, Berke EM. 2020. Swabs Collected by Patients or Health Care Workers for SARS-CoV-2 Testing. *New England Journal of Medicine* 383:494–496.
63. Kojima N, Turner F, Slepnev V, Bacelar A, Deming L, Kodeboyina S, Klausner JD. 2020. Self-Collected Oral Fluid and Nasal Swabs Demonstrate Comparable Sensitivity to Clinician Collected Nasopharyngeal Swabs for Covid-19 Detection. medRxiv <https://doi.org/10.1101/2020.04.11.20062372>.
64. Basu A, Zinger T, Inghima K, Woo K, Atie O, Yurasits L, See B, Aguero-Rosenfeld ME. 2020. Performance of Abbott ID Now COVID-19 Rapid Nucleic Acid Amplification Test Using Nasopharyngeal Swabs Transported in Viral Transport Media and Dry Nasal Swabs in a New York City Academic Institution. *J Clin Microbiol* <https://doi.org/10.1128/JCM.01136-20>.
65. Harrington A, Cox B, Snowdon J, Bakst J, Ley E, Grajales P, Maggiore J, Kahn S. 2020. Comparison of Abbott ID Now and Abbott m2000 Methods for the Detection of SARS-

- CoV-2 from Nasopharyngeal and Nasal Swabs from Symptomatic Patients. *J Clin Microbiol* <https://doi.org/10.1128/JCM.00798-20>.
66. Péré H, Podglajen I, Wack M, Flamarion E, Mirault T, Goudot G, Hauw-Berlemont C, Le L, Caudron E, Carrabin S, Rodary J, Ribeyre T, Bélec L, Veyer D. 2020. Nasal Swab Sampling for SARS-CoV-2: a Convenient Alternative in Times of Nasopharyngeal Swab Shortage. *Journal of Clinical Microbiology* <https://doi.org/10.1128/JCM.00721-20>.
67. Pinninti S, Trieu C, Pati SK, Latting M, Cooper J, Seleme MC, Boppana S, Arora N, Britt WJ, Boppana SB. 2020. Comparing Nasopharyngeal and Mid-Turbinate Nasal Swab Testing for the Identification of SARS-CoV-2. *Clin Infect Dis* <https://doi.org/10.1093/cid/ciaa882>.
68. Callahan C, Lee R, Lee G, Zulauf KE, Kirby JE, Arnaout R. 2020. Nasal-Swab Testing Misses Patients with Low SARS-CoV-2 Viral Loads. *medRxiv* <https://doi.org/10.1101/2020.06.12.20128736>.
69. Palmas G, Moriondo M, Trapani S, Ricci S, Calistri E, Pisano L, Perferi G, Galli L, Venturini E, Indolfi G, Azzari C. 2020. Nasal Swab as Preferred Clinical Specimen for COVID-19 Testing in Children. *The Pediatric Infectious Disease Journal* 39:e267.
70. Capecchi E, Di Pietro GM, Luconi E. 2020. Is Nasopharyngeal Swab Comparable With Nasopharyngeal Aspirate to Detect SARS-CoV-2 in Children? *The Pediatric Infectious Disease Journal* 39:e288.

71. Vlek ALM, Wesselius TS, Achterberg R, Thijsen SFT. 2020. Combined throat/nasal swab sampling for SARS-CoV-2 is equivalent to nasopharyngeal sampling. *Eur J Clin Microbiol Infect Dis* <https://doi.org/10.1007/s10096-020-03972-y>.
72. LeBlanc JJ, Heinstejn C, MacDonald J, Pettipas J, Hatchette TF, Patriquin G. 2020. A combined oropharyngeal/nares swab is a suitable alternative to nasopharyngeal swabs for the detection of SARS-CoV-2. *J Clin Virol* <https://doi.org/10.1016/j.jcv.2020.104442>.
73. Desmet T, Paepe PD, Boelens J, Coorevits L, Padalko E, Vandendriessche S, Leroux-Roels I, Aerssens A, Callens S, Braeckel V, Malfait T, Vermassen F, Verhasselt B. Combined oropharyngeal/nasal swab is equivalent to nasopharyngeal sampling for SARS-CoV-2 diagnostic PCR. *medRxiv* <https://doi.org/10.1101/2020.06.05.20123745>.
74. Bossuyt PM, Reitsma JB, Bruns DE, Gatsonis CA, Glasziou PP, Irwig L, Lijmer JG, Moher D, Rennie D, de Vet HCW, Kressel HY, Rifai N, Golub RM, Altman DG, Hooft L, Korevaar DA, Cohen JF, STARD Group. 2015. STARD 2015: an updated list of essential items for reporting diagnostic accuracy studies. *BMJ* 351:h5527.
75. Lindner AK, Nikolai O, Kausch F, Wintel M, Hommes F, Gertler M, Krüger LJ, Gaeddert M, Tobian F, Lainati F, Köppel L, Seybold J, Corman VM, Drosten C, Hofmann J, Sacks JA, Mockenhaupt FP, Denkinger CM. 2020. Head-to-head comparison of SARS-CoV-2 antigen-detecting rapid test with self-collected anterior nasal swab versus professional-collected nasopharyngeal swab. *medRxiv* <https://doi.org/10.1101/2020.10.26.20219600>.