

1 **Seroprevalence of Anti-SARS-CoV-2 Antibodies in a Cohort of New York City Metro Blood Donors**
2 **using Multiple SARS-CoV-2 Serological Assays: Implications for Controlling the Epidemic and**
3 **“Reopening”.**

4
5 Daniel K. Jin,^{1,*} Daniel J. Nesbitt,^{1,*} Jenny Yang,¹ Haidee Chen,¹ Julie Horowitz,³ Marcus Jones,³ Rianna
6 Vandergaast,⁴ Timothy Carey,⁴ Samantha Reiter,⁴ Stephen J Russell,^{5,6,7} Christos Kyratsous,⁸ Andrea
7 Hooper,⁸ Jennifer Hamilton,⁸ Manuel Ferreira,³ Sarah Deng,⁸ Donna Straus,² Aris Baras,³ Christopher D.
8 Hillyer,^{1,2} Larry L. Luchsinger^{1,#}

- 9
10 1. Laboratory of Stem Cell Regenerative Research, Lindsley F. Kimball Research Institute, New York
11 Blood Center, New York, NY 10065, USA.
12 2. New York Blood Center Enterprises, New York, NY 10065, USA.
13 3. Regeneron Genetics Center, Tarrytown, NY 10591, USA.
14 4. Imanis Life Sciences, Rochester, MN 55901
15 5. Vyriad, Inc., Rochester, MN 55901
16 6. Imanis Life Sciences, Rochester, MN 55901
17 7. Mayo Clinic Department of Molecular Medicine, Rochester, MN 55905
18 8. Regeneron Pharmaceuticals, Inc., Tarrytown, NY 10591, USA.
19

20 * Authors contributed equally to this work.

21 # Address correspondence to Larry Luchsinger (Lead): lluchsinger@nybc.org.

24 **Abstract**

25

26

Projections of the stage of the Severe Acute Respiratory Syndrome-Coronavirus-2 (SARS-CoV-2)

27

pandemic and local, regional and national public health policies designed to limit the spread of the epidemic as

28

well as “reopen” cities and states, are best informed by serum neutralizing antibody titers measured by

29

reproducible, high throughput, and statically credible antibody (Ab) assays. To date, a myriad of Ab tests,

30

both available and authorized for emergency use by the FDA, has led to confusion rather than insight per se.

31

The present study reports the results of a rapid, point-in-time 1,000-person cohort study using serial blood

32

donors in the New York City metropolitan area (NYC) using multiple serological tests, including enzyme-

33

linked immunosorbent assays (ELISAs) and high throughput serological assays (HTSAs). These were then

34

tested and associated with assays for neutralizing Ab (NAb). Of the 1,000 NYC blood donor samples in late

35

June and early July 2020, 12.1% and 10.9% were seropositive using the Ortho Total Ig and the Abbott IgG

36

HTSA assays, respectively. These serological assays correlated with neutralization activity specific to SARS-

37

CoV-2. The data reported herein suggest that seroconversion in this population occurred in approximately 1 in

38

8 blood donors from the beginning of the pandemic in NYC (considered March 1, 2020). These findings

39

deviate with an earlier seroprevalence study in NYC showing 13.7% positivity. Collectively however, these

40

data demonstrate that a low number of individuals have serologic evidence of infection during this “first

41

wave” and suggest that the notion of “herd immunity” at rates of ~60% or higher are not near. Furthermore,

42

the data presented herein show that the nature of the Ab-based immunity is not invariably associated with the

43

development of NAb. While the blood donor population may not mimic precisely the NYC population as a

44

whole, rapid assessment of seroprevalence in this cohort and serial reassessment could aid public health

45

decision making.

16 Background

17 The Severe Acute Respiratory Syndrome Coronavirus (SARS-CoV)-2 pandemic has swept the global
18 community with the United States reporting nearly 8.5 million confirmed cases and over 230,000 deaths from
19 Coronavirus disease (COVID)-19.(1, 2) Transmission models of SARS-CoV-2, supported by studies of
20 immune responses to related viral infections, suggest that recovery from infection could provide immunity to
21 reinfection.(1, 3) Thus, the use of serological tests to identify those who have acquired antibodies (Abs)
22 against SARS-CoV-2 (seroconversion) and the frequency of seroconversion in the population (seroprevalence)
23 is a powerful means with which to guide public health policies.(4, 5) The term ‘hotspots’ has emerged to
24 describe regions of high infectivity that appear and then recede as the pandemic evolves. It is important to
25 ascertain the frequency of SARS-CoV-2 seropositivity in regional populations to estimate the risk of infection
26 associated with newly developing or receding COVID-19 hotspots.

27 As natural infection continues to persist, and vaccine distribution commences, serologic assays will be
28 vital in monitoring the development of herd immunity, also called community or population immunity, which
29 refers to the point at which enough people are sufficiently “protected”, and person-to-person transmission is
30 unlikely. Reaching this milestone will, in effect, herald the end of the COVID-19 pandemic. Therefore,
31 population-wide serological assessment and reassessment are critical, and the tests employed need to be
32 reliable, credible, reproducible and high throughput. Furthermore, it is important to understand the degree of
33 correlation of any given assay’s “reactivity” with the presence of neutralizing antibody (Nab). These data,
34 then, can be used to assist public health officials in modeling projections and in informing policy making
35 decisions including the safe “reopening” of cities, states, and regions.

36 The performance and sensitivity of COVID-19 serology assays is myriad in platform (lateral flow,
37 ELISA, etc.) and variable in terms of sensitivity and specificity.(6, 7) Such assays rely on detection and
38 quantification of antibodies that recognize specific SARS-CoV-2 antigens including the four major structural
39 proteins; spike (S) protein (containing the S1 domain and RBD motif), nucleocapsid (NP) protein, membrane
40 (M) protein, and envelop (E) protein.(8) Research conducted on 2005 SARS-CoV-1 and Middle East
41 respiratory syndrome Coronavirus (MERS-CoV), which are highly related to SARS-CoV-2, found that

72 recovered individuals produced the strongest immunogenic antibodies against antigens of the S and N
73 proteins.(9) Thus, the development of serological tests for SARS-CoV-2 antibodies has focused heavily on the
74 detection of antibodies against these viral proteins.

75 As above, antibody-based tests vary considerably in both technology (platform) and target antigen
76 (design) which led to, in May 2020, the FDA reversing its emergency use authorization (EUA) and approval
77 policies in order to help ensure that reliable tests could be used to accurately measure seroconversion in
78 populations. Some tests have received emergency use authorization but population-wide data are limited, and
79 continuous monitoring is necessary to be of practical importance.

30 Variability in test characteristics, particularly sensitivity, implies that there may not yet be an *ideal* test
31 design and instrument platform, which can lead to variability and potential bias in the estimation of the level
32 of immunity in various locales or subpopulations.(10, 11) However, two platforms have been widely cited: 1)
33 in-house enzyme linked immunosorbent assays (ELISA), and 2) high-throughput serological assays (HTSA).
34 ELISAs offer wide flexibility for research laboratories to select virtually any antigenic protein of interest and
35 assay patient sera to provide highly sensitive, quantitative results. HTSAs are more suitable to clinical
36 laboratories processing large volumes of samples. Although HTSAs offer a narrower selection of antigen
37 choices, these platforms offer high-throughput capacity, high sensitivity and can be integrated into clinical lab
38 testing facilities. The resulting expectation of antibody development is an association with antiviral activity
39 and acquisition of immunity against future viral infection. However, only a subset of virus-specific antibodies
30 will be neutralizing, and the levels of SARS-CoV-2-specific neutralizing antibodies necessary to confer
31 protective immunity following infection or vaccination across the population are not known. Thus, studies that
32 evaluate serological test designs are necessary to associate a serological result with a probability of immunity.

33 New York City (NYC) was one of the first epicenters of the COVID-19 pandemic and possesses the
34 highest case count per capita of anywhere in the United States.(12) Seroconversion, therefore, is likely to be
35 substantial in a random sampling of NYC residents. Moreover, the true number of COVID-19 cases may be
36 underreported, resulting in inaccurate case estimates (incidence) and morbidity and mortality rates of SARS-
37 CoV-2.(13)

38 The objectives of the study reported herein were to determine the seroprevalence of anti-SARS-CoV-2
39 Ab in blood donors in the NYC metro area at a specific point in time four months after the first NY case, as a
40 surrogate for the population as a whole, an indicator of the stage of the epidemic, and as a baseline for future
41 reassessments, using commercially available serology tests, and characterize the Ab responses in ELISAs and
42 a neutralizing antibody assays, allowing us to ultimately inform city, state and nation-wide efforts to mitigate
43 the pandemic and its attendant social and economic strife.

44 **Results**

45 **Characteristics of the NYC Blood Donor Population**

46 To estimate seroprevalence, 1,000 blood donor plasma samples were randomly collected from NYBC
47 blood donation centers between June and July 2020, encompassing regions proximal to NYC, including Long
48 Island, Westchester County and New Jersey (**Figure 1A**). To characterize donors demographically, we cross-
49 referenced donor data to the 2010 U.S. Census dataset.(14) Donors ranged in age from 16 to 78 years with a
50 median age of 48 years (95% CI: 46-49 years), which was older than the New York City median age of 35.5
51 years and deviated from a Gaussian distribution (**Figure 1B**, $r^2=0.708$). The donor group also included
52 significantly fewer female donors (38.5%) compared to 52.5% citywide (**Figure 1C**). Donors that did not
53 respond to ethnicity or reported as ‘Other’ composed 15.6% of the donors. Among donors that responded, the
54 distribution of donor race/ethnicity was 73% white, 3.6% black, 3.4% multi-race, and 4.4% Asian, compared
55 to an average NYC Metro distribution of 44% white, 25.55% black, 3.99% multi-race, and 12.7% Asian
56 (**Figure 1D**). These data show skewing of blood donors from the NYC demographics in many categories,
57 which is a known characteristic of the blood donor population.

58 **High Throughput Serological Estimates**

59 To quantify SARS-CoV-2 seroprevalence in donor samples, the Ortho Clinical Diagnostics VITROS
60 Total Ig Test (Ortho) and the Abbott Labs Architect SARS-CoV-2 IgG (Abbott) HTSA assays were used.
61 Results of the Ortho test yielded 121 positive donors while the Abbott test showed 109 positive donors
62 (**Figure 2A**). Adjusting for sample size effect, the estimated seroprevalence rate using the Ortho HTSA was
63 12.1% (95% CI: 10.2 – 14.27%) while the Abbott test indicates a seroprevalence rate was 10.9% (95% CI:

24 9.1% - 12.9%). In total, 128 donors were seropositive by either HTSA test, with 102 donors (79.69%) testing
25 positive for anti-SARS-CoV-2 antibodies using both the Ortho and Abbott tests, and 19 (14.84%) or 7 (5.47%)
26 of donors testing positive using only the Ortho or Abbott test, respectively (**Figure 2B**). The median results
27 using the Ortho test for seropositive donors was 414 (n=121, 95% CI: 320.0-466.0, IQR: 135.0-692.5),
28 representing a 5,900-fold increase over the median Ortho result for seronegative donors which was 0.07
29 (n=879, 95% CI: 0.07-0.07, IQR 0.05-0.10) (**Figure 2C**). The median Abbott test result for seropositive
30 donors was 4.1 (n=109, 95% CI: 3.56-4.77, IQR: 2.77-5.915), representing a 130-fold increase over the
31 median Abbott result for the seronegative donors which was 0.03 (n=891, 95%CI: 0.02-0.03, IQR: 0.02- 0.5)
32 (**Figure 2D**).

33 The gold-standard of serological quantification is the ELISA assay. To compare HTSA results using
34 our in-house SARS-CoV-2 ELISA assays, we analyzed donor plasma for antibodies using S1 and NP
35 antigens. Using the S1 ELISA (**Figure 2E**), the median value for seropositive donors was 352.1 $\mu\text{g/mL}$
36 (n=128, 95% CI: 312.0-399.8 $\mu\text{g/mL}$, IQR: 179.9 – 617.2 $\mu\text{g/mL}$) and the median value for negative donors
37 was 21.5 $\mu\text{g/mL}$ (n=97, 95% CI: 17.32 – 26.77 $\mu\text{g/mL}$, IQR: 6.29 – 38.79 $\mu\text{g/mL}$). Using the NP ELISA
38 (**Figure 2F**), the median value for seropositive donors was 193.5 ng/mL (n=128, 95% CI: 155.6 ng/mL-
39 226.7ng/mL, IQR: 74.00 ug/mL- 380 ug/mL) and the median value for negative donors was 19.38 ng/mL
40 (n=97, 95% CI: 15.74 ng/mL - 24.20 ng/mL, IQR: 12.79 ug/mL - 31.49ug/mL). Interestingly, seropositive
41 donors for Ortho and Abbott tests showed 88.2% and 84.5% above the S/co value for the S1 ELISA assay.
42 Expectedly, seropositive donors negative by S1 ELISA assays had relatively low HTSA scores (data not
43 shown), which suggests HTSA assays have higher sensitivity than traditional ELISA methodology. Linear
44 regression of Ortho and Abbott tests (**Figure 2G**) showed a modest goodness-of-fit ($r^2=0.37$) indicating that
45 while HTSA test scores are positively associated, a high degree of variation within donors exists between
46 HTSA test results. Taken together, these data confirm that a wide range of serological results are prevalent in
47 the NYC metro population and HTSA platforms have the highest sensitivity to quantify serological results
48 with which to estimate seroprevalence.

49 **Neutralizing Activity of NYC Blood Donors**

50 Antiviral antibodies can inhibit viral particles from infecting target cells and constitute an important
51 form of immunity to future viral exposure; particularly in relation to effective vaccination. In the case of
52 SARS-CoV-2, such assays require biosafety level 3 (BSL-3) facilities and highly trained personnel. To
53 overcome this limitation and expedite testing, we employed a ‘surrogate virus’ neutralization assay to quantify
54 nAb levels present in donor plasma, which differs from conventional SARS-CoV-2 pseudovirus particles in
55 that surrogate virus retains replication potential and is thus more analogous to live SARS-CoV-2. The results
56 of the neutralization end point titer (NT₁₀₀) assays are summarized in **Table 1**. The majority (87.4%, n=90) of
57 Ortho seropositive donors (n=121) were positive for nAbs, while 18 samples (14.9%) had indeterminant levels
58 of nAbs and 13 samples (12.6%) were negative for neutralizing activity. Ortho seronegative donors (n=104)
59 showed 1 positive (0.9%) and 2 (1.8%) indeterminant samples for neutralizing activity. The majority (92.4%,
60 n=86) of Abbott seropositive donors (n=109) were also positive for nAbs, with 16 samples (14.7%) having
61 indeterminant levels of nAbs and 7 samples (7.6%) being negative for neutralizing activity. Abbott
62 seronegative donors (n=116) showed 5 positive (4.3%) and 4 (3.4%) indeterminant samples for neutralizing
63 activity. It was noted that all samples positive for neutralization activity were positive for at least one HSTA
64 assay, while 14.9% of seropositive samples were negative for neutralization activity (**Table 2**). These data
65 illustrate the that serological assays, particularly those with values near the S/co value for each assay, may not
66 reliably correspond to bona fide neutralization activity.

67 The semi-quantitative NT₁₀₀ method showed that titers for seropositive samples varied between donors.
68 Reciprocal dilution factor values ranged from <80 to 1,280 (**Figure 3A**). Analysis of the 128 seropositive
69 samples revealed 21.9% were below the LOD at the 1:80 dilution (the lowest dilution tested in this analyses)
70 and 7.0% were considered ‘indeterminant’, due to suspected sample interference. We found low NT₁₀₀ titers of
71 80 and 160 comprised 30.5% and 29.7% of BD samples, respectively, constituting over half of seropositive
72 blood donors. Moderate NT₁₀₀ titers of 320 and 640 accounted for 5.5% and 4.7% of donors while the highest
73 nAb titers of ≥ 1280 described 0.8% of seropositive samples. These data indicate that, similar to serology
74 results, nAb levels against SARS-CoV-2 are highly variable and are skewed towards low neutralizing activity
75 within seropositive blood donors in the NYC metro area.

76 It remains infeasible to implement neutralization assays as a measurement of antiviral antibodies at the
77 scale of the general population. While many serology tests have been developed, evidence as to the predictive
78 value between SARS-CoV-2 serology test results and neutralizing activity continues to be an important
79 validation for the medical and scientific community. To this end, we examined the correlation between
30 serology and neutralization assays in the CP donor samples. Spearman's correlation analysis of all five
31 serological analyses showed a high degree of positive association between all tests (**Figure 2H**). The Ortho
32 and Abbott HTSA tests showed the highest degree of correlation with neutralization activity (Ortho: $r=0.64$,
33 Abbott: $r=0.62$), followed by the S1 ($r=0.55$) and NP ($r=0.51$). Interestingly, the Ortho HTSA and S1 ELISA,
34 and Ortho HTSA and nAb assay showed the highest correlation ($r=0.64$), further validating the SARS-CoV-2
35 spike S1 protein as an important target of neutralizing function. These data confirm that established HTSA and
36 ELISA assays strongly correlate with neutralizing activity. As expected, the Ortho test, which measures anti-
37 spike antibodies, showed a higher degree of correlation with the S1 ELISA titers ($r=0.639$) while the Abbot
38 test, which measures anti-NP antibodies, showed a high degree of correlation with the NP ELISA titer
39 ($r=0.778$).

30 Further, median values for both HTSA assays increased with higher neutralizing assay titers (**Figure 3B, 3C**)
31 and this observation was also observed in ELISA assays (**Figure 3D, 3E**). These data highlight the utility of
32 HTSA and ELISA assays to predict neutralization activity of plasma samples.

33 Similarly, we evaluated the correlation between donor-reported SARS-CoV-2 polymerase chain
34 reaction (PCR) testing, SARS-CoV-2 serology, and neutralization. 273 donors (27.3%) reported having had a
35 PCR test, with 44 (16.1%) reporting to have had a positive PCR result, 203 reporting to have had a negative
36 PCR result, and 750 donors who were either not tested or were awaiting PCR results (**Table 3**), though date of
37 PCR test was not available. Of the 44 donors reporting to have had a positive PCR result, 43 (97.7%) were
38 seropositive, with 39 (88.6%) being both Ortho seropositive and Abbott seropositive, and an additional 3
39 being Ortho seropositive, and 1 being Abbott seropositive. Donors reporting to have had a positive PCR result
40 were also tested for neutralization activity, with 38/44 (86.4%) samples positive, 5 indeterminate, and 1
41 negative for neutralizing activity (**Table 4**). Though the amount of time between positive SARS-CoV-2 PCR

02 test result and blood donation is not known, CP eligibility requires that the donor be 14 days from the date of
03 last symptom. Whether or not indeterminate/negatives may have seroconverted subsequent to the donation
04 analyzed, these results show strong correlation between positive SARS-CoV-2 PCR test results, seropositivity,
05 and neutralization activity and may be suggestive of longitudinal immunity.

06 **Discussion**

07 COVID-19 antibody testing has entered public discourse as an important metric in monitoring the
08 evolution of the SARS-CoV-2 outbreak. Ultimately, the application of antibody testing could be clinically
09 informative as to the degree of immunity incurred by recovered patients or vaccinated individuals. Random
10 blood donor screening is a practice that is readily feasible using blood banking infrastructure to rapidly screen
11 regional populations for seroprevalence monitoring. This is the first study to evaluate a large cohort of
12 random blood donors in the NYC metro area for SARS-CoV-2 antibodies. However, we recognize the
13 limitations of the current study include a lack of generalizability as a consequence of the modestly skewed
14 demographics of blood donors and the general population as a whole, and that this may impact the
15 conclusions of the results. In fact, seroprevalence has been suggested to be higher in specific racial/ethnic
16 communities based on recent studies.(15) Thus, more inclusive and complete seroprevalence studies will need
17 to be performed in the future. Nonetheless, the authors believe that using blood donor in serial studies is an
18 important, if indirect, measure of community immunity.

19 In this study, we found the Ortho Total Ig and Abbott IgG HTSA assays estimate a ~10.9-12.2%
20 SARS-CoV-2 seroprevalence in July of 2020 in the NYC Metro area. Moreover, we found that ELISA assays,
21 which are the gold-standard of serological quantification, corresponded with seropositive classification of
22 donors as detected by HTSAs, thus validating the use of ELISAs in population studies. Further, in seropositive
23 blood donors we observed a wide range of anti-SARS-CoV-2-neutralizing activity that was skewed towards
24 low to moderate NT₁₀₀ titers. This trend is in agreement with our previous investigation of convalescent
25 plasma donors(16) and a study of patients recovering from COVID-19, both of which also showed large
26 variability and modest levels of neutralizing activity in plasma units.(17)

27 Our estimation of the NYC Metro area blood donor seroconversion is in agreement with other reports
28 from state and local departments of health. Seroconversion in a study of Bergen County, NJ was estimated to
29 be 12.2% in June of 2020.(18) Seroconversion among hospital workers in New York City was estimated to be
30 13.7% as of June of 2020.(19) The overall seroprevalence in New York City, at the peak of the epidemic, was
31 estimated to be 21% with some communities as high as 68% using data from emergency care clinics.(20) This
32 is juxtaposed to neighboring states, such as Rhode Island, where we estimated seroconversion to be 0.6%
33 among blood donors in May 2020.(21) Given the early introduction of SARS-CoV-2 in the NYC Metro area
34 in March of 2020 as an initial, and possibly largest, ‘hot-spot’ in the United States, the estimated
35 seroprevalence in this study may be lower than anticipated due to naturally waning antibody titers(22) (or due
36 to demographics of donor population relative to the NYC population.

37 **Conclusion**

38 In conclusion, we estimate the seroprevalence of NYC metro blood donors to be approximately 1 in 8
39 donors during the month of July 2020 and four months post the commencement of the epidemic in NY. While
40 it is slightly lower than another study using a NYC population of healthcare workers during a similar time
41 period, who, in all likelihood, had higher than typical exposure rates,(19) our findings demonstrate a
42 comparable seroprevalence estimate can be discerned using a widely accessible blood donor population and it
43 an important metric during this catastrophic outbreak. This strategy can therefore be leveraged in its design for
44 future studies to implement rapid seroconversion/seroprevalence monitoring. Furthermore, considering the
45 possibility that this may be an underestimate of the metropolitan population, these conclusions suggest that in
46 the absence of a vaccine, “background” or “herd” immunity continues to be low at four months post-
47 commencement, and, now eight months into the US pandemic, it is probable that the susceptible population
48 remains very high, and possibly at ~80% or greater.

49

50

51 **Methods**

52 ***Whole Blood Donors and Sample Preparation***

53 From June 16, 2020 – July 15, 2020, consecutive NYC metro donors (n=1,000) received a 2-question
54 survey, provided demographic information and completed a blood donation. Choropleth was generated in
55 house from donor zip code prefix data using the web tool, <http://www.heatmapper.ca/geocoordinate/>. Plasma
56 was isolated from whole blood samples collected in citrate tubes. Samples were extracted, aliquoted to
57 minimize freeze-thaw cycles, and stored at -80°C. Donor blood samples were tested using the Ortho
58 VITROS™ SARS-CoV-2 Total Ig assay, Abbott SARS-CoV-2 IgG assay, in-house ELISAs, and the Vyrriad
59 IMMUNO-COV™ neutralization assay as described with some modifications.(23) The IMMUNO-COV
60 assay performed here differed from that which was described in the referenced publication in that: 1) plasma
61 samples were heat-inactivated instead of serum samples, which is necessary due to thermal coagulation and 2)
62 neutralization activity was quantified using neutralization end point titer (NT₁₀₀) method and not a standard
63 curve.

64 ***High-throughput Serology Assays***

65 Plasma samples were barcoded and dispatched to Rhode Island Blood Center (RIBC). Samples were
66 analyzed using the Abbott SARS-CoV-2 IgG chemiluminescent microparticle immunoassay using the Abbott
67 Architect i2000SR (Abbott Core Laboratories), as well as the VITROS Immunodiagnostic Products Anti-
68 SARS-CoV-2 Total Test using the VITROS 5600 (Ortho Clinical Diagnostics). All assays were performed by
69 trained RIBC employees according to the respective manufacturer standard procedures.

70 ***Virus Neutralization Assays***

71 Plasma samples were heat-inactivated for 30 min at 56°, then clarified by centrifugation for 5 min. at
72 12,000 x g and assayed using a surrogate virus SARS-CoV-2 neutralization assay. A modified version of the
73 IMMUNO-COV™ assay (19), was used in which each plasma sample was serially diluted and assayed at a
74 total of six dilutions, starting at 1:80. The virus neutralizing titer was determined as the reciprocal of the
75 highest dilution at which the sample was still positive for neutralization based on assay performance relative to
76 a pre-defined calibrator consisting of monoclonal anti-spike antibody.

77 ***In-house SARS-Cov2 Binding-Antibody ELISAs***

78 Flat-well, nickel-coated 96 well ELISA plates (Thermo Scientific; USA) were coated with 2 ug/mL of
79 recombinant S1 spike protein, nucleocapsid protein, or Receptor Binding Domain (RBD) spike protein
30 specific to SARS-CoV-2 in resuspension buffer (1% Human Serum Albumin in 0.01% TBST) and incubated
31 in a stationary humidified chamber overnight at 4°C. On the day of the assay, plates were blocked for 30 min
32 with ELISA blocking buffer (3% W/V non-fat milk in TBST). Standard curves for both S1 and RBD assays
33 were generated by using mouse anti-SARS-CoV-2 spike protein monoclonal antibody (clone [3A2],
34 ABIN2452119, Antibodies-Online) as the standard. Anti-SARS-CoV-2 Nucleocapsid mouse monoclonal
35 antibody (clone [7E1B], bsm-41414M, Bioss Antibodies) was used as a standard for nucleocapsid binding
36 assays. Monoclonal antibody standard curves and serial dilutions of donor sera were prepared in assay buffer
37 (1% W/V non-fat milk in TBST) and added to blocked plates in technical duplicate for 1 hr with orbital
38 shaking at room temperature. Plates were then washed three times with TBST and incubated for 1 hr with
39 ELISA assay buffer containing Goat anti-Human IgA, IgG, IgM (Heavy & Light Chain) Antibody-HRP (Cat.
30 No. ABIN100792, Antibodies-Online) and Goat anti-Mouse IgG2b (Heavy Chain) Antibody-HRP (Cat. No.
31 ABIN376251, Antibodies-Online) at 1:30000 and 1:3000 dilutions, respectively. Plates were then washed
32 three times, developed with Pierce TMB substrate (Thermo Scientific; USA) for approximately 5-7.5 min, and
33 quenched with 3 M HCl. Absorbance readings were collected at 450 nm. Standard curves were constructed in
34 Prism 8.4 (Graphpad Software Inc.) using a Sigmoidal 4PL Non-Linear Regression (curve fit) model.

35 ***Estimated Seroprevalence & Statistical Calculations***

36 For HTSA assays, seroprevalence was estimated using the Wilson Bayesian statistical method.(24)
37 Data and statistical analyses were performed and presented using Prism 8.

39 **Authors' Contributions**

30 DKJ, DJN, HC and JY performed serology experiments and analyzed donor demographic analyses. JH
31 coordinated neutralization assays. MJ and DS managed the collection and distribution of donor samples. LLL

02 managed the collection of data, figures and statistical analyses. LLL, JH, AB and CDH co-wrote the
03 manuscript.

04

05 **Acknowledgements**

06 We thank Jill Alberigo, Amanda Brites and Kelly Brightman from Rhode Island Blood Center for their help
07 with performing the Ortho Anti-SARS-CoV-2 Total Test and the Abbott SARS-CoV-2 IgG test.

08

09 **Conflicts of Interest**

10 The authors declare no conflicts of interest.

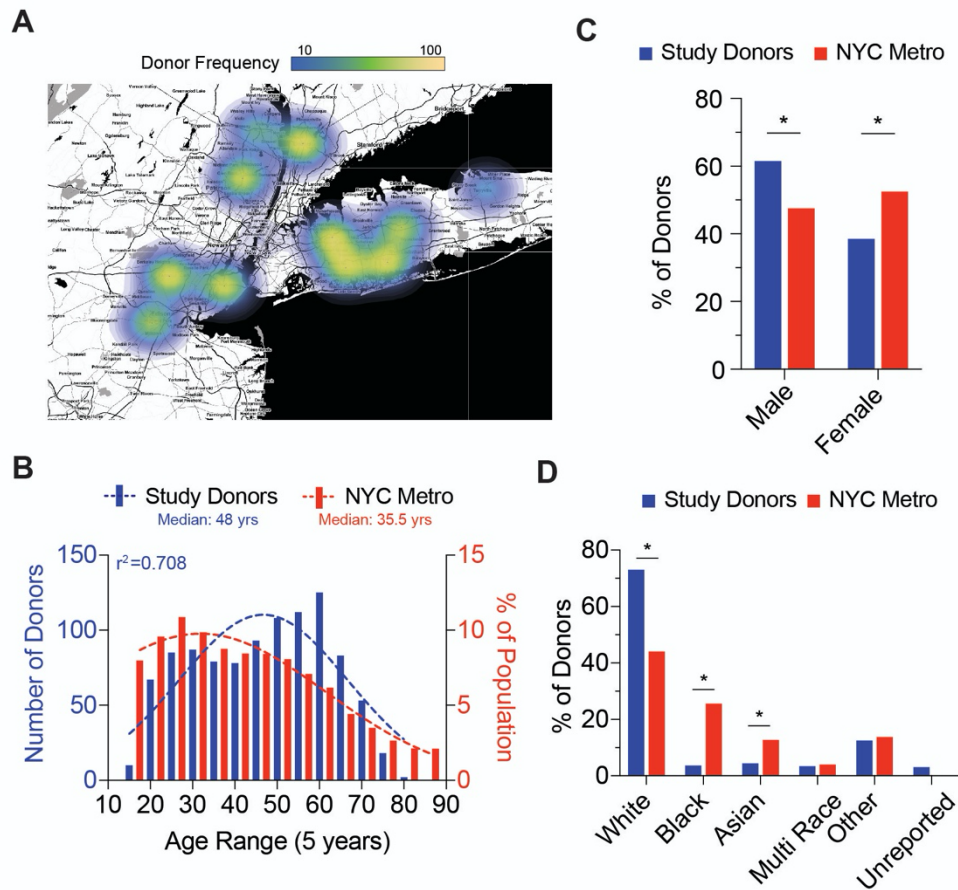
11

12 **Role of the Funding Source**

13 Funding for this project was provided in part by the New York Blood Center and Regeneron Pharmaceuticals,
14 Inc.

15

16 **Figure 1**



17

18

19 **Figure 1: Blood Donor Demographics of NYC Metro Area**

20 **A;** Choropleth of donation site locations used for collection of blood donor samples. Heatmap (gradient bar,
21 top) indicates frequency of donors collected per site.

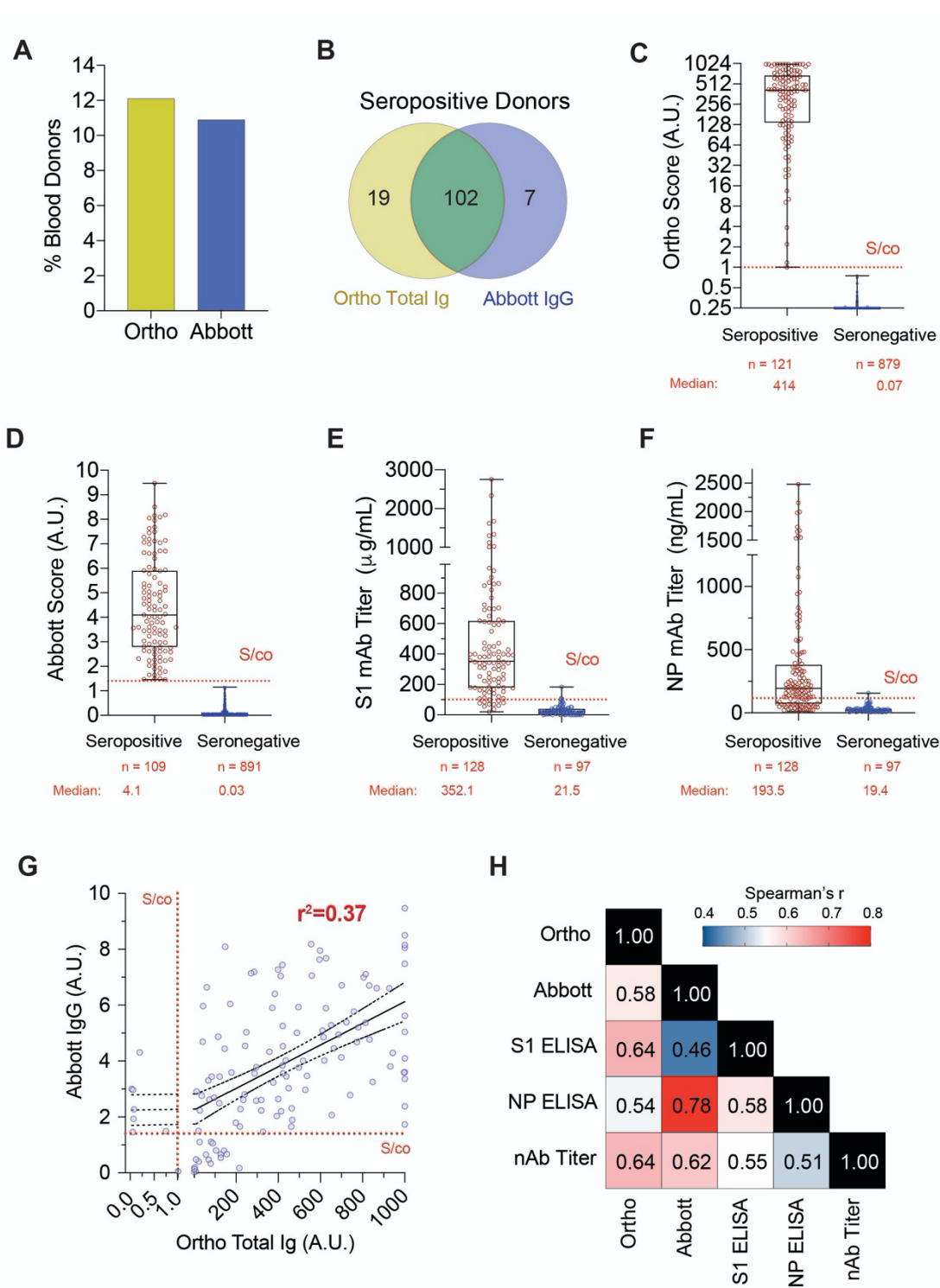
22 **B;** Distribution of NYC Metro area donor age (red bars) compared to NYC demographics (blue bars). Dotted
23 lines represent best fit to a Gaussian distribution and r^2 value represents calculated goodness of fit to
24 distribution plot.

25 **C;** Gender frequency of NYC Metro area donors (red bars) compared to NYC demographics (blue bars). Chi-
26 square test for goodness of fit to observed (donors) versus expected (NYC demographics) results; * $p < 0.01$

27 **D;** Ethnicity frequency of NYC Metro area donors (red bars) compared to NYC demographics (blue bars).
28 Chi-square test for goodness of fit to observed (donors) versus expected (NYC demographics) results; *
29 $p < 0.01$

30

31 **Figure 2**



32

33

34 **Figure 2: Serological and Neutralizing Activity Analysis of NYC Metro Blood Donors**

35 **A;** Frequency of NYC Metro area seropositive donors as determined using the Ortho Total Ig (yellow bar) or
36 Abbott IgG (blue bar) HTSA assays.

37 **B;** Venn diagram of donors determined to be seropositive using the Ortho (yellow) or Abbott (blue) HTSA
38 assays. Seropositive donors that were reactive for both tests are indicated in overlap (green).

39 **C;** Distribution of Ortho HTSA serological results between seropositive (red dots) and seronegative (blue
40 dots) as determined by the Ortho HTSA assay. Median value and sample number is shown below graph.

41 Dotted line shows S/co value (1.00 A.U.).

42 **D;** Distribution of Abbott HTSA serological results between seropositive (red dots) and seronegative (blue
43 dots) as determined by the Abbott HTSA assay. Median value and sample number is shown below graph.

44 Dotted line shows S/co value (1.4 A.U.)

45 **E;** Distribution of S1 ELISA serological results between seropositive (red dots) and seronegative (blue dots)
46 as determined by either HTSA assay. Median value and sample number is shown below graph. Dotted line

47 shows S/co value (100 μ g/mL).

48 **F;** Distribution of NP ELISA serological results between seropositive (red dots) and seronegative (blue dots)
49 as determined by either HTSA assay. Median value and sample number is shown below graph. Dotted line

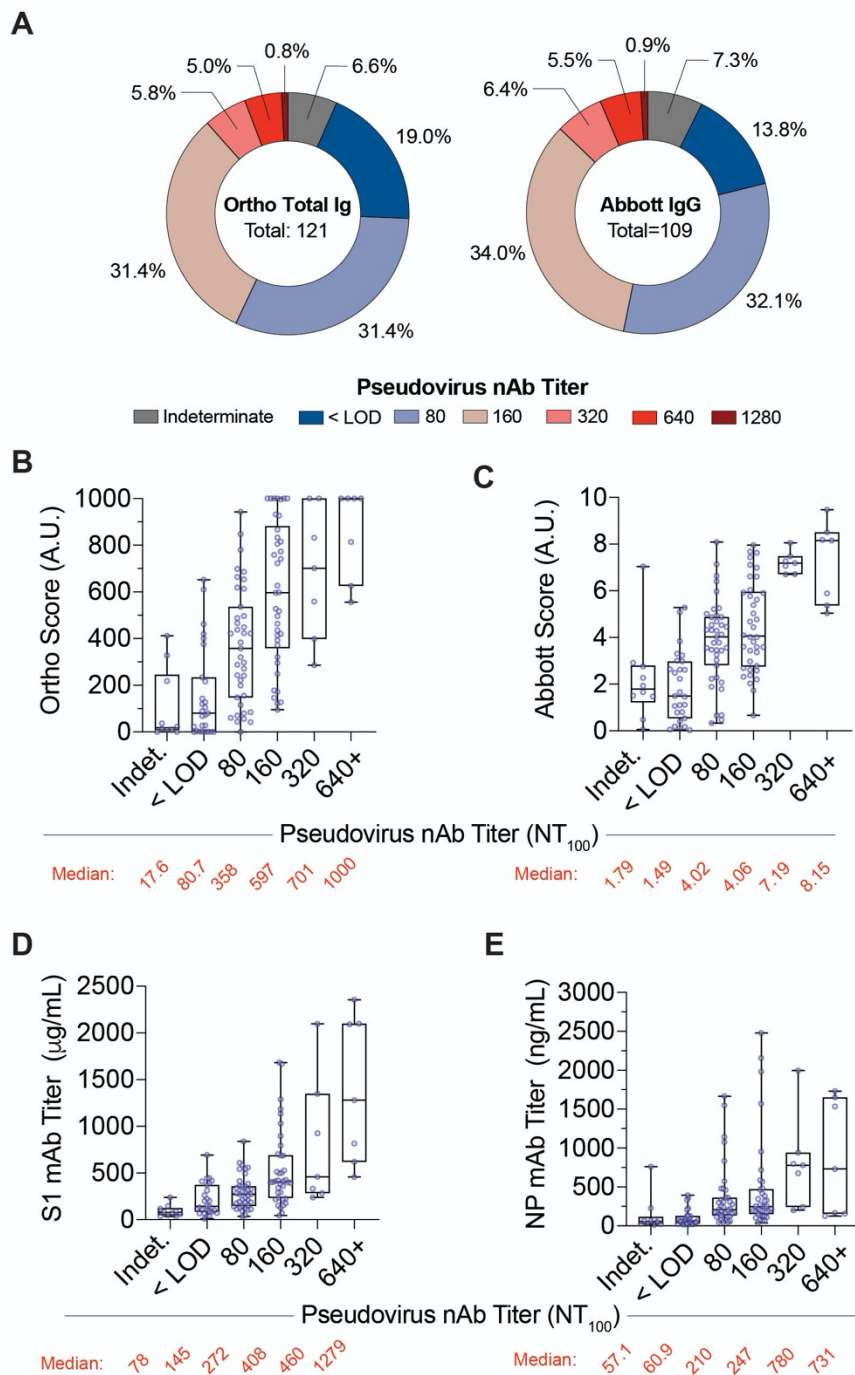
50 shows S/co value (100 μ g/mL).

51 **G;** Linear regression of seropositive donor of HTSA results. Dotted lines denote signal to cutoff (S/co) for
52 each test and goodness of fit, r^2 , is shown.

53 **H;** Spearman correlation coefficients, r , between each serological assay.

54

55 **Figure 3**



56

57

58 **Figure 3: Correlation of NYC Metro Donor Serological Results with Neutralization Activity**

59 **A;** Frequency of Ortho HTSA (left) or Abbott HTSA (right) seropositive donor pseudovirus neutralization
30 end-point titers.

31 **B-E;** Box plots of seropositive donor serology results using the Ortho HTSA, Abbott HTSA, S1 ELISA and
32 NP ELISA for each category of neutralization end point titers. Boxes and whiskers denote 1st and 3rd quartiles
33 and range, respectively. Median serology value of each category is shown below graph.

34

35

36 **Table 1: Correlation of Serological Results with Neutralization Activity**

Neutralization Result				
Ortho HTSA	Positive	Negative	Indeterminate/ Borderline	Total
<i>Seropositive</i>	90	13	18	121
<i>Seronegative</i>	1	89	2	104
				225
Abbott HTSA	Positive	Negative	Indeterminate/ Borderline	Total
<i>Seropositive</i>	86	7	16	109
<i>Seronegative</i>	5	95	4	116
				225

37

38 **Table 2: Neutralization Activity as a Function of Serological Results**

<i>HTSA Result</i>	<i>Neutralization Result</i>		
	Positive	Indeterminate/ Borderline	Negative
Ortho Only	5	4	10
Abbott Only	1	2	4
Double Positive	85	14	3
Double Negative	0	0	97
Total Samples Tested	91	20	114
Percent HTSA Reactive	100%	100%	14.9%

39

70 **Table 3: Correlation of Serological Results with Self-Reported SARS-CoV-2 PCR Results**

<i>Self-Reported SARS-CoV-2 PCR Test Result</i>	<i>Seropositive Donors by HTSA</i>			Seronegative Donors	Total
	Ortho/Abbott	Ortho	Abbott		
<i>Positive</i>	39	3	1	1	44
<i>Negative</i>	16	5	1	181	203
<i>Untested/No result</i>	47	11	5	690	750

71

72 **Table 4: Correlation of Neutralization Results with Self-Reported SARS-CoV-2 PCR Results**

Neutralization Result					373
<i>SARS-CoV-2 PCR Test Result</i>	Positive	Negative	Indeterminate	Total	
<i>Positive</i>	38	1	5	44	373
<i>Negative</i>	14	27	2	43	
<i>Untested/No result</i>	37	90	11	138	

376

77

78

79 References

- 30 1. Andersen KG, Rambaut A, Lipkin WI, Holmes EC, Garry RF. The proximal origin of SARS-CoV-2. *Nat Med.* 2020;26(4):450-2.
- 31 2. Wu F, Zhao S, Yu B, Chen YM, Wang W, Song ZG, et al. A new coronavirus associated with human
32 respiratory disease in China. *Nature.* 2020;579(7798):265-9.
- 33 3. Kucharski AJ, Russell TW, Diamond C, Liu Y, Edmunds J, Funk S, et al. Early dynamics of transmission and
34 control of COVID-19: a mathematical modelling study. *Lancet Infect Dis.* 2020;20(5):553-8.
- 35 4. Chan CM, Tse H, Wong SS, Woo PC, Lau SK, Chen L, et al. Examination of seroprevalence of coronavirus
36 HKU1 infection with S protein-based ELISA and neutralization assay against viral spike pseudotyped virus. *J Clin*
37 *Virol.* 2009;45(1):54-60.
- 38 5. Lee CY, Lin RTP, Renia L, Ng LFP. Serological Approaches for COVID-19: Epidemiologic Perspective on
39 Surveillance and Control. *Front Immunol.* 2020;11:879.
- 40 6. Luchsinger LL, Ransegnola B, Jin D, Muecksch F, Weisblum Y, Bao W, et al. Serological Analysis of New
41 York City COVID19 Convalescent Plasma Donors. *medRxiv.* 2020.
- 42 7. Ragnesola B, Jin D, Lamb CC, Shaz BH, Hillyer CD, Luchsinger LL. COVID19 antibody detection using lateral
43 flow assay tests in a cohort of convalescent plasma donors. *BMC Res Notes.* 2020;13(1):372.
- 44 8. Zhong X, Yang H, Guo ZF, Sin WY, Chen W, Xu J, et al. B-cell responses in patients who have recovered from
45 severe acute respiratory syndrome target a dominant site in the S2 domain of the surface spike glycoprotein. *J Virol.*
46 2005;79(6):3401-8.
- 47 9. Tai W, He L, Zhang X, Pu J, Voronin D, Jiang S, et al. Characterization of the receptor-binding domain (RBD)
48 of 2019 novel coronavirus: implication for development of RBD protein as a viral attachment inhibitor and vaccine. *Cell*
49 *Mol Immunol.* 2020.
- 50 10. Chaturvedi R, Naidu R, Sheth S, Chakravarthy K. Efficacy of Serology Testing in Predicting Reinfection in
51 Patients with SARS-CoV-2. *Disaster Med Public Health Prep.* 2020:1-7.
- 52 11. Deeks JJ, Dinnes J, Takwoingi Y, Davenport C, Spijker R, Taylor-Phillips S, et al. Antibody tests for
53 identification of current and past infection with SARS-CoV-2. *Cochrane Database Syst Rev.* 2020;6:CD013652.
- 54 12. Rosenberg ES, Tesoriero JM, Rosenthal EM, Chung R, Barranco MA, Styer LM, et al. Cumulative incidence
55 and diagnosis of SARS-CoV-2 infection in New York. *Ann Epidemiol.* 2020;48:23-9 e4.
- 56 13. Lachmann A. Correcting under-reported COVID-19 case numbers. *medRxiv.* 2020.
- 57 14. USCensusBureau. 2010 Census of Population and Housing on Summary Population and Housing
58 Characteristics. United States Government Printing Office. 2013;CPH-1-1.
- 59 15. Martinez DA, Hinson JS, Klein EY, Irvin NA, Saheed M, Page KR, et al. SARS-CoV-2 Positivity Rate for
60 Latinos in the Baltimore-Washington, DC Region. *JAMA.* 2020.
- 61 16. Luchsinger LL, Ransegnola B, Jin D, Muecksch F, Weisblum Y, Bao W, et al. Serological Assays Estimate
62 Highly Variable SARS-CoV-2 Neutralizing Antibody Activity in Recovered COVID19 Patients. *J Clin Microbiol.* 2020.
- 63 17. Wu F, Liu M, Wang A, Lu L, Wang Q, Gu C, et al. Evaluating the Association of Clinical Characteristics With
64 Neutralizing Antibody Levels in Patients Who Have Recovered From Mild COVID-19 in Shanghai, China. *JAMA*
65 *Intern Med.* 2020;180(10):1356-62.
- 66 18. BERGEN COUNTY MOBILE TESTING STATISTICS AND WEEK 9 LOCATIONS [press release]. online,
67 July 2, 2020 2020.
- 68 19. Moscola J, Sembajwe G, Jarrett M, Farber B, Chang T, McGinn T, et al. Prevalence of SARS-CoV-2 Antibodies
69 in Health Care Personnel in the New York City Area. *JAMA.* 2020;324(9):893-5.
- 70 20. Goldstein J. 1.5 Million Antibody Tests Show What Parts of N.Y.C. Were Hit Hardest. *The New York Times.*
71 2020;Sect. A.
- 72 21. Nesbitt DJ, Jin D, Hogan JW, Chan PA, Simon MJ, Vargas M, et al. Low Seroprevalence of SARS-CoV-2 in
73 Rhode Island Blood Donors Determined using Multiple Serological Assay Formats. *medRxiv.* 2020.
- 74 22. Seow J, Graham C, Merrick B, Acors S, Pickering S, Steel KJA, et al. Longitudinal observation and decline of
75 neutralizing antibody responses in the three months following SARS-CoV-2 infection in humans. *Nat Microbiol.* 2020.
- 76 23. Vandergaast R, Carey T, Reiter S, Lech P, Gnanadurai C, Tesfay M, et al. Development and validation of
77 IMMUNO-COV: a high-throughput clinical assay for detecting antibodies that neutralize SARS-CoV-2. *bioRxiv.* 2020.
- 78 24. Brown LD, Cai TT, DasGupta A. Interval Estimation for a Binomial Proportion. *Statist Sci.* 2001;16(2):101-33.
- 79

30