

1 **Title page**

2 **Title**

3 Characterising heterogeneity and sero-reversion in antibody responses to mild SARS-CoV-2
4 infection: a cohort study using time series analysis and mechanistic modelling

5 **Authors**

6 Manisty C^{1,2}, Treibel TA^{1,2}, Jensen M², Semper A³, Joy G², Gupta RK⁴, Cutino-Moguel T⁵,
7 Andiapen M⁶, Jones J³, Taylor S³, Otter A³, Pade C⁷, Gibbons JM⁷, Lee WYJ⁷, Jones M⁸,
8 Williams D^{9,10}, Lambourne J¹¹, Fontana M^{12,13}, Altmann DM¹⁴, Boyton RJ¹⁵, Maini MK⁴, McKnight A⁸,
9 Brooks T³, Chain B⁴, Noursadeghi M^{*4}, Moon JC^{*1,2} on behalf of COVIDsortium Investigators

10 **Affiliations**

- 11 1. Institute of Cardiovascular Sciences, University College London, London, UK
12 2. Barts Heart Centre, St Bartholomew's Hospital, Barts Health NHS Trust, London, UK, London, UK
13 3. National Infection Service, Public Health England, Porton Down, UK
14 4. Division of Infection and Immunity, University College London, London, UK
15 5. Department of Virology, Barts Health NHS Trust, London, UK
16 6. Centre for Cardiovascular Medicine and Devices, William Harvey Research Institute, Queen Mary
17 University of London, London, UK
18 7. Blizard Institute, Barts and the London School of Medicine and Dentistry, Queen Mary University
19 of London, London, UK
20 8. Wolfson Institute of Preventive Medicine, Barts and the London School of Medicine and 24
21 Dentistry, Queen Mary University of London, London, UK
22 9. MRC Unit for Lifelong Health and Ageing, University College London, London, UK
23 10. Department of Medical Epidemiology and Biostatistics, Karolinska Institutet, Stockholm, Sweden
24 11. Department of Infection, Barts Health NHS Trust, London, UK
25 12. Royal Free London NHS Foundation Trust, London, UK
26 13. Division of Medicine, University College London, London, UK
27 14. Department of Immunology and Inflammation, Imperial College London, London, UK
28 15. Department of Infectious Disease, Imperial College London, London, UK

29 * These authors made an equal contribution.

30 **Correspondence**

31 Professor Mahdad Noursadeghi, Division of Infection and Immunity, University College London.
32 Email: m.noursadeghi@ucl.ac.uk

33 **Abstract**

34 **Background**

35 SARS-CoV-2 serology is used to identify prior infection at individual and at population level. Extended
36 longitudinal studies with multi-timepoint sampling to evaluate dynamic changes in antibody levels are
37 required to identify the time horizon in which these applications of serology are valid, and to explore
38 the longevity of protective humoral immunity.

39 **Methods**

40 Health-care workers were recruited to a prospective cohort study from the first SARS-CoV-2 epidemic
41 peak in London, undergoing weekly symptom screen, viral PCR and blood sampling over 16-21
42 weeks. Serological analysis (n=12,990) was performed using semi-quantitative Euroimmun IgG to
43 viral spike S1 domain and Roche total antibody to viral nucleocapsid protein (NP) assays.
44 Comparisons were made to previously reported pseudovirus neutralising antibody measurements.

45 **Findings**

46 A total of 157/729 (21.5%) participants developed positive SARS-CoV-2 serology by one or other
47 assay, of whom 31.0% were asymptomatic and there were no deaths. Peak Euroimmun anti-S1 and
48 Roche anti-NP measurements correlated ($r=0.57$, $p<0.0001$) but only anti-S1 measurements
49 correlated with near-contemporary pseudovirus neutralising antibody titres (measured at 16-18
50 weeks, $r=0.57$, $p<0.0001$). By 21 weeks' follow-up, 31/143 (21.7%) anti-S1 and 6/150 (4.0%) anti-NP
51 measurements reverted to negative. Mathematical modelling suggested faster clearance of anti-S1
52 compared to anti-NP (median half-life of 2.5 weeks versus 4.0 weeks), earlier transition to lower levels
53 of antibody production (median of 8 versus 13 weeks), and greater reductions in relative antibody
54 production rate after the transition (median of 35% versus 50%).

55 **Interpretation**

56 Mild SARS-CoV-2 infection is associated with heterogenous serological responses in Euroimmun
57 anti-S1 and Roche anti-NP assays. Anti-S1 responses showed faster rates of clearance, more rapid
58 transition from high to low level production rate and greater reduction in production rate after this
59 transition. The application of individual assays for diagnostic and epidemiological serology requires
60 validation in time series analysis.

61 **Funding**

62 Charitable donations via Barts Charity

63

64 **Research in context**

65 ***Evidence before this study***

66 We searched PubMed, medRxiv, and bioRxiv for ["antibody" OR "serology"] AND ["SARS-CoV-2" OR
67 "COVID-19"]. The available literature highlights widespread use of serology to detect recent SARS-
68 CoV-2 infection in individual patients and in population epidemiological surveys. Antibody to virus
69 spike protein S1 domain is widely reported to correlate with neutralising antibody titres. The existing
70 assays have good sensitivity to detect seroconversion within 14 days of incident infection, but the
71 available longitudinal studies have reported variable rates of decline in antibody levels and reversion
72 to undetectable levels in some people over 3 months. High frequency multi-time point serology data
73 for different antibody targets or assays in longitudinal cohorts from the time of incident infection to
74 greater than 3 months follow up are lacking.

75 ***Added value of this study***

76 We combine detailed longitudinal serology using the Euroimmun anti-S1 and Roche anti-nucleocapsid
77 protein (NP) assays in 731 health care workers from the time of the first SARS-CoV-2 epidemic peak
78 in London, UK. In 157 seroconverters (using either assay) we show substantial heterogeneity in
79 semiquantitative antibody measurements over time between individuals and between assays.
80 Mathematical modelling of individual participant antibody production and clearance rates in individuals
81 with at least 8 data points over 21 weeks showed anti-S1 antibodies to have a faster clearance rate,
82 earlier transition from the initial antibody production rate to lower rates, and greater reduction in
83 antibody production rate after this transition, compared to anti-NP antibodies as measured by these
84 assays. As a result, Euroimmun anti-S1 measurements peaked earlier and then reduced more rapidly
85 than Roche anti-NP measurements. In this study, these differences led to 21% anti-S1 sero-reversion,
86 compared to 4% anti-NP sero-reversion over 4-5 months.

87 ***Implications of all of the available evidence***

88 The rapid decline in anti-S1 antibodies measured by the Euroimmun assay following infection limits its
89 application for diagnostic and epidemiological screening. If generalisable, these data are consistent
90 with the hypothesis that anti-S1 mediated humoral immunity may not be sustained in some people
91 beyond the initial post-infective period. Further work is required to understand the mechanisms behind
92 the heterogeneity in antibody kinetics between individuals to SARS-CoV-2. Our data point to
93 differential mechanisms regulating humoral immunity against these two viral targets.

94 **Introduction**

95 Detection of antibodies to SARS-CoV-2 is key to establishing the prevalence of infection in the
96 population, and hence tracking the progress of the pandemic, and may be used to diagnose past
97 infection in individual patients. Moreover, antibody to envelope spike protein may contribute to
98 protective immunity.¹⁻⁴ Interpretation of cross-sectional serology is critically dependent on
99 understanding the dynamics of the antibody response, and how this might vary for different viral target
100 antigens, in different assays and between individuals.

101 Numerous studies have shown that individuals with a confirmed polymerase chain reaction (PCR)
102 diagnosis of SARS-CoV-2 develop IgM, IgA and IgG against the spike protein S1 domain and
103 nucleocapsid protein (NP) within 2 weeks of symptom onset, which remain detectable following initial
104 viral clearance.⁵⁻⁷ Early data suggest antibody levels correlate with disease severity.^{8,9} Antibody
105 responses to other human coronaviruses decay over time with regular reinfection events, which has
106 caused concern that SARS-CoV-2 immunity following natural infection may be short-lived, leading to
107 risk of re-infection and making the possibility for achieving herd immunity through natural infection
108 unrealistic.¹⁰⁻¹² The data for SARS-COV-2 remains conflicting, with some longitudinal serological
109 studies suggesting rapid antibody decline, while others have shown much greater persistence.^{3,13-22}
110 These vary by cohort (hospital, symptomatic only, PCR positive, community), assay (quality-assured,
111 antigen target), sampling granularity and follow-up period.

112 We present a detailed temporal analysis of circulating antibody using two widely used
113 semi-quantitative commercial assays to detect either anti-S1 or anti-NP in a cohort of hospital health
114 care workers in a prospective longitudinal multi-centre cohort study with high frequency serial
115 sampling over 16-21 weeks during the first epidemic wave in London, UK. We assessed concordance
116 between assays and the determinants of inter-individual heterogeneity in antibody responses by
117 testing associations with clinical and demographic variables. Finally, we applied mathematical
118 modelling to infer the fundamental mechanisms that may underpin changes to antibody levels over
119 time.

120 **Methods**

121 ***Study design and participants***

122 The study was approved by a UK Research Ethics Committee (South Central - Oxford A Research
123 Ethics Committee, reference 20/SC/0149). The details of participant screening, study design, sample
124 collection, and sample processing are previously published and registered on ClinicalTrials.gov,
125 NCT04318314.²³ Briefly, hospital healthcare workers (HCWs) self-declared fit to attend work were
126 recruited to an observational cohort study consisting of questionnaires and biological sample
127 collection at baseline and over 16 weekly-follow-up visits. Those who were unable to attend follow-up
128 visits were consulted remotely to enable capture of information regarding possible exposures and
129 symptoms. The baseline questionnaire included demographic data, medical history and exposures,
130 alongside detailed information regarding the nature and timing of self-reported symptoms over the
131 preceding 3 months.²³ Follow-up weekly questionnaires included data on new symptoms and changes

132 to occupational and community risk factors, or results of tests conducted outside of the study.
133 Symptoms were classified as follows: 'case-defining' (fever, new dry cough or a new loss of taste or
134 smell; which have been shown to predict COVID-19 positivity with high specificity), 'non-specific
135 (symptoms other than case-defining symptoms), or asymptomatic (no symptoms reported throughout
136 the study period or in the three preceding months).

137 An initial cohort of 400 HCWs was recruited from St Bartholomew's Hospital, London, UK in the week
138 of lockdown in the United Kingdom (between 23rd and 31st March 2020); Cohort 1. Recruitment was
139 subsequently extended to include additional participants from multiple sites between 27th April 2020
140 and 7th May 2020 (Cohort 2). This included St Bartholomew's Hospital (n=101), NHS Nightingale
141 Hospital (n=10), and the Royal Free NHS Hospital Trust (n=220). Data collection therefore extended
142 over 21 weeks from baseline recruitment of Cohort 1 (the day of UK lockdown) to completion of 16-
143 week follow-up of Cohort 2. Towards the end of the study period for Cohort 2 (follow-up weeks 12-15)
144 following the decline in community infection rates, the frequency of blood sampling was reduced to
145 twice per month rather than weekly, in order to improve tolerability to participants.

146 **Procedures**

147 Nasal RNA stabilizing swabs for molecular testing for SARS-CoV-2 were acquired at baseline and
148 weekly. RT-PCR was performed on nasal swabs using Roche cobas® SARS-CoV-2 test. SARS-CoV-
149 2 antibody testing was performed in a single laboratory at Public Health England on all available
150 serum samples from baseline and follow-up visits using two commercial assays according to
151 manufacturers' protocols. These were the Euroimmun anti-SARS-CoV-2 enzyme-linked
152 immunosorbent assay (ELISA) (IgG) targeting IgG specific for the SARS-CoV-2 S1 antigen, and the
153 Roche Elecsys Anti-SARS-CoV-2 electrochemiluminescence immunoassay (ECLIA) that detects
154 antibodies (including IgG) directed against the SARS-CoV-2 nucleocapsid protein (NP).²⁴⁻²⁷

155 The Euroimmun ELISA was performed using a Stratec Gemini automated microplate processor as
156 previously described.²⁸ Raw optical density (OD) readings were adjusted by calculating the ratio of the
157 OD of the control or participant sample divided by the OD of the assay calibrator. A ratio ≥ 1.1 was
158 used as the threshold for a positive result as per manufacturer's instructions.²⁴ A ratio of 11 was used
159 as the upper threshold of the dynamic range, as the assay saturated above this point. The Roche
160 ECLIA was performed using the Roche cobas® e801 immunoassay analyser analyzer.²⁶ Results are
161 expressed as a cut-off index (COI), calculated by the analyser software as the
162 electrochemiluminescence signal obtained from the patient sample divided by the lot-specific cut-off
163 value.²⁵ A COI ≥ 1 was used as the threshold for a positive result as per manufacturer's instructions.
164 Across their dynamic range, the semi-quantitative indices of both assays approximate to a linear
165 relationship with antibody levels (Supplementary Figure 1). We have previously reported quantitation
166 of pseudovirus neutralising antibody (nAb) titres in 70 seropositive HCW from this cohort at 16-18
167 weeks of follow up.²⁹

168 **Statistical analysis**

169 In descriptive analyses, Spearman's rank correlation coefficients were calculated for all paired assay
170 values across the study period. Univariable associations of demographics, symptoms and exposures
171 with serostatus (seropositivity by one or both antibody assays at any timepoint) were assessed using
172 logistic regression. Univariable and multivariable associations of characteristics (including age, sex,
173 ethnicity and case-defining symptom status) with peak antibody levels were also quantified using
174 linear regression for anti-N IgG/IgM and anti-S1 IgG.

175 We also performed univariable and multivariable survival analyses to assess whether participant
176 characteristics (including age, sex, ethnicity, case-defining symptom status and peak anti-S1) were
177 associated with time to sero-reversion for the anti-S1 assay. For this analysis, we included all
178 participants who seroconverted on the anti-S1 assay at any point during follow-up. We assumed
179 synchronous onset of infection for these individuals by indexing the start time for the survival analysis
180 as the first week of Cohort 1 study enrolment (the week of UK lockdown). Anti-S1 sero-reversion was
181 defined as a negative test in the last assay performed during follow-up for each participant.
182 Participants who sero-reverted exited the survival analysis on the first week where a negative test
183 (following an earlier positive test) was recorded; those who did not sero-revert were censored on the
184 week of their last available anti-S1 serology result. Analyses were conducted in R (version 3.6.3) and
185 Stata Statistical Software version 16 (College Station, TX, USA).

186 **Mechanistic mathematical modelling of antibody production.**

187 Circulating antibody levels are determined by the balance between rates of production and clearance.
188 We represented antibody production by a simplified discrete mechanistic model captured by
189 equation 1, with time indexed to calendar weeks from initiation of UK lockdown (as described for the
190 survival analyses). We incorporated a production rate (AbPr) and an antibody turnover (clearance
191 rate, r). Antibody production was simplified to two phases, an initial high rate (AbPr₁) followed by a
192 switch to a lower rate (AbPr₂), after a time t_{stop} . Since the assay units of antibody concentration are
193 arbitrary and are not comparable between assays, the value of AbPr₁ is also arbitrary, and serves
194 only to scale the model output to the scale of the data. AbPr₂ is expressed as a proportion of AbPr₁.
195 The rate of clearance r can be directly calculated from the half-life, which was allowed to vary
196 between 1 week and 4 weeks (the latter equivalent to the known turnover rate of free IgG). An
197 important emerging feature of the model is that the time to plateau (peak) is determined only by the
198 clearance rate (Supplementary Figure 2), and not by the rate of production AbPr₁. Furthermore, any
199 subsequent fall from the peak must reflect a corresponding decrease in AbPr. Hence the model
200 assumption that $\text{AbPr}_2 < \text{AbPr}_1$.

201 Equation 1: $\text{Ab}_t = \text{Ab}_{t-1} + \text{AbPr} - \text{Ab}_{t-1} * (1 - e^{-r})$, where t is time in weeks, $\text{AbPr} = \text{AbPr}_1$ for $1 < t <$
202 t_{stop} or AbPr_2 for $t_{\text{stop}} < t < t_{\text{end}}$; and $\text{AbPr}_2 < \text{AbPr}_1$, and $r = \log(2)/\text{half_life}$.

203 The levels of anti-S1 or anti-NP antibody in blood were compared to the model, over a range of the
204 parameters (AbPr₁, AbPr₂ as a proportion of AbPr₁, r and t_{stop}) by calculating the root mean

205 square distance between data and model output, and the parameter set with the minimum distance
206 was selected. In our primary analysis, we restricted mathematical modelling to seropositive
207 participants with ≥ 8 antibody data points (N=92 for anti-S1, N=86 for anti-NP, Supplementary
208 Figure 3). In sensitivity analysis, we further restricted the modelling to seroconverters in whom the first
209 (baseline) sample was negative.

210 **Results**

211 ***Study population***

212 The study population has previously been published²³ and are summarised in Supplementary Table 1.
213 Briefly, this comprised 731 HCWs (median age 35 IQR 28 years, 33.0% male). Fourteen withdrew
214 (two with no samples obtained). Average weekly attendance was 61% with median 10 (IQR 6) visits
215 per participant. 20.2% were doctors, 31.2% were nurses, 27.5% were allied healthcare professionals,
216 21.1% were others including administrative and clerical. 22.6% worked in an intensive care unit or
217 emergency department setting. Co-morbidities were relatively low (18.1% smokers, 12.6%
218 BMI $>30\text{kg/m}^2$, 10.7% with asthma, 7.3% with hypertension, 2.1% with diabetes mellitus, 1.2% with
219 rheumatological disease, 0.8% with cancer). 62.5% of participants were white, 37.5% non-white with
220 5.6% of black ethnicity), and 47.6% reported a mean household size of ≥ 3 people. Exposure at
221 baseline to contacts with confirmed COVID-19 was high (42.7% to patients, 29.5% to colleagues, and
222 1.1% to household members with confirmed COVID-19) and 25.6% were exposed to aerosol
223 generating procedures.

224 ***Seroconversion to SARS-CoV-2***

225 In cohort 1 (recruited from 23rd March; day of UK lockdown), 28/396 (7.1%) had a positive nasal PCR
226 at baseline, with rates falling rapidly in the subsequent four weeks, Figure 1.³⁰ In cohort 2 (recruited
227 from 27th April, 5 weeks after UK lockdown and study start) 3/331 (0.9%) had positive nasal PCR
228 swabs at their first study visit. There were no positive PCR swabs across either cohort by 6 weeks
229 after UK lockdown (after 1st May 2020). The cumulative PCR positivity rate was 6.6% (48/729).

230 Serology testing used both assays on all subjects at all timepoints giving a total of 12990 tests and
231 median of 10 paired assays per individual (Supplementary Figure 3). Baseline seropositivity (by either
232 assay) in cohort 1 was 22/399 (5.5%), rising to 17.8% by study completion and 82/330 (25%) rising to
233 26.1% for cohort 2 (which started 5 weeks later). Overall, 157 of 729 (21.5%) had at least one
234 seropositive result. Consistent with the lack of nasal swab PCR detection of incident infection by 6
235 weeks after UK lockdown, 98% of cumulative seroconversions were evident by 7 weeks after
236 lockdown. Of the 48 participants in whom incident infection was detected by a positive nasal swab
237 PCR at any time point, 44 had subsequent blood tests of which 42/44 (95.4%) became seropositive in
238 at least one assay. Subsequent anti-S1 seropositivity at any timepoint was lower following a positive
239 PCR result than anti-NP seropositivity (86.4% versus 93.2% respectively), although the time interval
240 to seroconversion was faster (median 2.5 versus 3.0 weeks). Across all samples, binary outcomes at
241 the manufacturers' predefined thresholds for each assay were concordant in 96.9% (6276/6476

242 samples), but this reduced to 82.7% (953/1153) concordance in those samples where at least one of
243 the two assays were positive.

244 Of participants who were seropositive at any timepoint, 43.9% reported case-definition symptoms
245 during the study, 24.8% non-case definition symptoms and 31.2% were completely asymptomatic.
246 Only two study participants were hospitalised, neither required ventilatory support or died. In
247 univariable analysis, there was no association between age or sex and seropositivity, but risk was
248 higher in participants of Black ethnicity (odds ratio 2.61 [1.36, 4.98], $p=0.004$,
249 Supplementary Figure 4). Risk of infection could not be explained by baseline co-morbidities or
250 clinical roles, although HCWs based in ICU had lower rates than others (OR 0.52 [0.30, 0.90],
251 $p=0.02$). Reported exposure to household members (baseline plus follow-up) with COVID-19 was the
252 strongest association with infection (OR 11.36 [2.27, 56.87], $p=0.003$). In contrast, reported exposure
253 to SARS-CoV-2 positive patients or colleagues did not influence infection rates.

254 ***Longitudinal serology to SARS-CoV-2***

255 Peak antibody measurements were highly variable between seropositive individuals across the cohort
256 (coefficient of variation 77.89% for anti-NP and 54.09% for anti-S1, Figure 2). Despite infections being
257 mild, 7.7% participants had values at the threshold upper limit in the Euroimmun anti-S1 assay. We
258 extended our previous exploration of associations with peak antibody measurements in subset of the
259 cohort²⁹ to the full cohort of seropositive participants (Supplementary Table 1-3). In multivariable
260 analyses, there was a modest positive association of increasing age with peak anti-S1 antibody
261 measurements (beta coefficient per year increase 0.05; 95% CI 0.01 to 0.09; $p=0.021$), but not with
262 anti-NP (beta coefficient 0.50; 95% CI -0.22 to 1.2; $p=0.2$). Black, Asian and minority ethnic groups
263 were associated with higher peak anti-NP responses (beta coefficient 22; 95% CI 4.9 to 39; $p=$
264 0.012), with a weaker association for peak anti-S1 (beta coefficient 1.0; 95% CI -0.04 to 2.0; $p=$
265 0.058). We found no association of peak antibody measurements with sex, or case-defining symptom
266 status.

267 Peak antibody measurements using the two assays correlated ($r=0.57$, $p<0.001$) (Supplementary
268 Figure 5). The correlation between ranked antibody indices stratified by time interval from the start of
269 the study, revealed a shift from more highly ranked anti-S1 antibodies in the first 6 weeks to more
270 highly ranked anti-NP antibodies in the last 8 weeks (Supplementary Figure 6A), and the ratio of
271 anti-S1:anti-NP antibody measurements trended downwards over time (Supplementary Figure 6B).
272 This analysis was consistent with different temporal profiles in circulating antibody levels to these two
273 targets. Accordingly, among seropositive participants, time ordered aggregate data for each assay
274 showed anti-S1 antibody indices to reach a peak and then fall more rapidly than the anti-NP antibody
275 indices (Figure 2). By the end of the study 31/143 (21.7%) with positive Euroimmun anti-S1 serology
276 had reverted to negative, in comparison to 6/150 (4%) of those with positive Roche anti-NP serology.

277 We compared previously reported neutralising antibody (nAb) titres in all seroconverters who
278 attended for an additional blood sample (N=70) at 16-18 weeks of follow up²⁹ to the highest anti-S1
279 and anti-NP assay measurements in the present study in 54/70 participants for whom we had data

280 from within two weeks of nAb measurements. The inhibitory concentration (IC)₅₀ titres showed
281 significant correlation to ranked anti-S1 antibody indices ($r=0.57$, $p<0.0001$) but not to anti-NP
282 antibody indices at near-contemporary time points (Figure 3).

283 In univariable and multivariable survival analyses among participants who had a positive anti-S1
284 assay, higher peak anti-S1 responses were associated with longer time to sero-reversion (hazard
285 ratio 0.42 per unit increase when adjusted for age, sex, ethnicity and case-defining symptom status;
286 95% CI 0.30 to 0.58; $p<0.001$; Supplementary Table 4). Age, sex, ethnicity and presence/absence of
287 case-defining symptoms were not associated with time to sero-reversion.

288 ***Mathematical modelling of kinetics of circulating anti-S1 and anti-NP antibodies***

289 We sought to obtain further insight into these underlying processes by fitting a mathematical model to
290 the antibody data. We first fitted the model to the median of all the data for all individuals who were
291 seropositive at any time point, assuming approximately synchronous infections coincident with the
292 peak epidemic transmission at the start of the study. The best fit models for the anti-S1 and anti-NP
293 data were clearly distinct. The inferred rate of clearance of S1 antibodies was faster than that of NP
294 antibodies, and the switch to a lower antibody production rate occurred sooner and reduced by a
295 greater extent (Figure 4A-B).

296 We noted that individual antibody response profiles were heterogeneous in magnitude and dynamics
297 (Figure 2A). We therefore repeated our analysis for each subject individually (Supplementary
298 Figure 6), and derived the model parameters (Figure 4C-E). As anticipated, the best fit model
299 parameters across the cohort were highly heterogeneous. However, clear differences could be
300 observed between the anti-S1 and anti-NP antibody responses, reflecting the same hierarchy as we
301 observed when fitting the median antibody data. Thus, anti-S1 antibodies have a shorter half-life
302 (median 2.5 weeks, 95% CI 2-3) than anti-NP antibodies (median 4 weeks, 95% CI 3-4). Production
303 switches to a lower rate more quickly (median 8 weeks, 95% CI 7-8 versus 13 weeks, 95% CI 13-14),
304 and to a relatively lower level (median 0.35, 95% CI 0.2-0.5 versus 0.5, 95% CI 0.05-0.5) with anti-S1
305 than with anti-NP antibodies, respectively. In general, there appeared to be greater inter-individual
306 heterogeneity in the best fit model parameters for the Euroimmun anti-S1 antibody profiles than for
307 the Roche anti-NP antibody profiles (Figure 4C-E). There were no strong associations between model
308 parameters (half-life of antibody clearance, time to lower production rate and level of reduction) for
309 either assay with age, sex, ethnicity or symptoms.

310 In order to exclude the potential confounding effects of capturing individuals only after antibody
311 production was well established, we repeated the analysis using only those who were seronegative at
312 the first available timepoint. The results were qualitatively the same for this smaller sub-group
313 (Supplementary Figure 8).

314 Discussion

315 We report a detailed time series analysis of circulating antibodies to SARS-CoV-2 S1 and NP proteins
316 following asymptomatic or pauci-symptomatic infection, using two widely adopted commercial assays.
317 Antibody measurements were highly heterogeneous between seropositive individuals, however both
318 assays show initial high sensitivity for incident (even asymptomatic) infections following PCR
319 detection of virus on nasal swabs, consistent with previous evaluations of these tests.^{31 26,27} Peak
320 antibody index measurements in each assay were significantly correlated, suggesting both antigenic
321 targets were similarly immunogenic. By 16-21 weeks after the peak of the epidemic wave in London,
322 more than one in five individuals who had developed positive serology to the virus spike protein had
323 sero-reverted by the Euroimmun anti-S1 assay. In contrast, reduction in Roche anti-NP
324 measurements to subthreshold levels was evident in less than one in twenty. These findings have
325 potentially important implications. First, it reveals that epidemiological seroprevalence surveys may be
326 biased by antibody decay over this time horizon and may substantially underestimate incident
327 infections. Second, given that anti-S1 antibodies correlate with protective neutralising antibodies, the
328 extent of the reduction in circulating levels of anti-S1 suggests that antibody-mediated protective
329 immunity in some individuals may be short-lived following asymptomatic or pauci-symptomatic
330 infection.

331 Semi-quantitative antibody measurements over the initial five months following infection revealed
332 differential kinetics for the two assays. Anti-S1 antibodies reached peak levels before anti-NP
333 antibodies, but also showed a more rapid decline. It is interesting to speculate whether differential
334 profiles of antibody assays can be exploited to estimate the time of infection. We used mathematical
335 modelling to evaluate the determinants of the kinetic profiles and showed that the differential time to
336 peak antibody level is dependent on differential clearance rates. Our model is consistent with a
337 median half-life of 4 weeks for anti-NP antibodies consistent with long established estimates for
338 circulating IgG. The median half-life of anti-S1 antibodies was significantly less, at 2.5 weeks. The
339 subsequent fall in antibody levels reveals a transition in antibody production to a lower level. Our
340 model estimated that this transition occurred at a median of 8 weeks for anti-S1 antibodies compared
341 to a median of 14 weeks for anti-NP antibodies. Finally, we sought to derive the relative rate of
342 antibody production after the transition. For both antibodies, this reduced to at least 50% of antibody
343 production rates before the transition, but a substantial proportion of individuals exhibited significantly
344 greater reduction of anti-S1 antibody production. The combination of lower antibody production rate
345 and the natural clearance of antibody resulted in levels falling below the detection threshold of the
346 assay in a significant proportion of the study cohort. In multivariable analysis, only peak anti-S1
347 measurements were associated with shorter time to anti-S1 sero-reversion.

348 The durability of antibodies to specific antigenic targets is highly variable after different viral infections
349 and the factors which determine these are poorly understood. Several hypotheses merit investigation
350 in future work. If the surface exposed domains of the SARS-CoV-2 spike protein have greater
351 propensity to form immune complexes, increased rates of antibody clearance via immune complex
352 formations³² may contribute to the shorter half-life of anti-S1 antibodies. The transition to lower levels

353 of antibody production may represent the switch from antibody production from short lived
354 plasmablasts to long lived plasma cells.³³ Importantly, immune complexes are also known to regulate
355 antibody production via inhibitory Fc receptors on plasma cells.³⁴ Therefore, immune complex
356 formation may also contribute to lower levels of anti-S1 antibody production after the transition.
357 Alternatively, there may be differences in the relative contribution of short-lived extrafollicular memory
358 B cells versus long-lived plasma cells to the antibody responses against these two antigens. We
359 found a stronger T cell response at 16-18 weeks to whole NP than whole spike antigen in this
360 cohort²⁹; future studies should test whether NP-specific T follicular helper cells are better equipped to
361 support an efficient germinal centre reaction resulting in more long-lived plasma cells for NP than
362 spike protein. Alternatively, the better durability of anti-NP antibodies could relate to differences in
363 maintenance of their cognate antigen, for example on follicular dendritic cells.

364 A key strength of our study is that the start at the time of first epidemic peak in London, UK, allowed
365 the time of incident infection to be estimated accurately (69.0% of cohort 1 recruited prior to
366 seroconversion) and the data were not confounded by prior exposures or vaccine trials. In addition,
367 the focus on asymptomatic and pauci-symptomatic infection is representative of the vast majority of
368 incident infections. Our finding that almost one in three were completely free from symptoms despite
369 detailed weekly contemporaneous data collection to reduce recall bias is consistent with other
370 estimates of rates of asymptomatic infection.²² Serology was assessed weekly with a median of 10
371 samples per participant over 16 weeks and, with almost 13,000 validated antibody assays performed,
372 provide to our knowledge the most granular longitudinal data currently available at this scale.

373 Previous reports of the longevity of circulating antibodies to SARS-CoV-2 vary. Direct comparisons
374 are undermined by the use of different assays targeting distinct antigens, differences in study
375 population demographics, severity of illness, sampling frequency and duration of follow up. Two
376 themes have emerged. First, that there is a detectable rate of reversion of seropositive individuals to
377 becoming seronegative over 3 to 6 months, consistent with our findings.^{3,18,19} Some reports have
378 sought to predict the time to sero-reversion with multilevel models to estimate the decay rate.^{20,35} Our
379 analysis extends these analyses significantly by combining unprecedented high frequency sampling
380 and mathematical modelling to provide dynamic estimates of production and clearance rates that
381 determine the overall levels of circulating antibody. Second, there are frequent reports of an
382 association between the clinical severity of infection with magnitude of initial antibody responses and
383 the longevity of circulating antibody titres.^{15,35} Whether, this explains recent studies that show
384 sustained levels in hospitalised patients over 3 to 6 months will require further evaluation.^{2,36}

385 Our study has important limitations. Our time series analysis was limited to individual semiquantitative
386 assays for each antigenic target. Direct comparison of antibody levels was not possible due to
387 differences in dynamic range of these assays and their co-linearity. At present, results from any single
388 assay are not generalisable. Moreover, these assays did not provide any differential assessment of
389 antibody subclasses, which may exhibit differential kinetics. The significant correlation between
390 near-contemporary Euroimmun anti-S1 measurements and functional pseudovirus nAb titres

391 increased confidence in our assessment of anti-S1 levels, and is in line with data using live virus
392 micro-neutralisation.³⁷ Nonetheless, the correlation coefficient was modest suggesting that
393 Euroimmun anti-S1 measurements do not explain all humoral neutralising activity. Moreover,
394 emerging data on T cell reactivity to SARS-CoV-2 highlights the potential role of cellular
395 immunity.^{16,29,38} Therefore, the Euroimmun anti-S1 measurements are not likely to provide a
396 comprehensive measure of protective immunity following natural infection. In addition, our study
397 population is not generalisable to all. Instead, it is representative of a workforce with likely high
398 exposure, and low risk of severe COVID-19. Cohort 1 may have underestimated rates of infection
399 because we were not able to recruit those who were in self-isolation at the peak of transmission,
400 whilst cohort 2 may have overestimated rates of infection due to volunteer bias seeking testing.³⁹ We
401 do not expect either of these to confound our key findings. The sample size limited stratification of
402 inter-individual heterogeneity, or identifying predictors of sero-reversion.

403 **Conclusions**

404 Asymptomatic and pauci-symptomatic infection with SARS-CoV-2 elicits antibody responses to spike
405 protein and to nuclear protein antigens in the vast majority, but with heterogeneity and differential
406 temporal profiles. Anti-S1 antibodies measured by the Euroimmun assay have a shorter half-life,
407 transition from high to lower levels of antibody production earlier and exhibit a greater reduction in
408 antibody production rate, compared to anti-NP antibodies measured by the Roche assay. The
409 important consequences of this are that, used alone, anti-S1 assays may underestimate past infection
410 with implications for the application of this test for individual patient care and population level
411 epidemiological surveys. Further work is required to evaluate the generalisability of these findings and
412 investigate the determinants of heterogeneity in these antibody responses.

413 **References**

- 414 1. Addetia A, Crawford KHD, Dingens A, et al. Neutralizing antibodies correlate with protection
415 from SARS-CoV-2 in humans during a fishery vessel outbreak with high attack rate. *medRxiv* 2020:
416 2020.08.13.20173161.
- 417 2. Wajnberg A, Amanat F, Firpo A, et al. Robust neutralizing antibodies to SARS-CoV-2
418 infection persist for months. *Science* 2020: eabd7728.
- 419 3. Seow J, Graham C, Merrick B, et al. Longitudinal observation and decline of neutralizing
420 antibody responses in the three months following SARS-CoV-2 infection in humans. *Nature*
421 *Microbiology* 2020.
- 422 4. Yu J, Tostanoski LH, Peter L, et al. DNA vaccine protection against SARS-CoV-2 in rhesus
423 macaques. *Science* 2020; **369**(6505): 806.
- 424 5. Amanat F, Stadlbauer D, Strohmeier S, et al. A serological assay to detect SARS-CoV-2
425 seroconversion in humans. *Nature Medicine* 2020; **26**(7): 1033-6.
- 426 6. Long Q-X, Liu B-Z, Deng H-J, et al. Antibody responses to SARS-CoV-2 in patients with
427 COVID-19. *Nature Medicine* 2020; **26**(6): 845-8.
- 428 7. Okba NMA, Müller MA, Li W, Wang C, GeurtsvanKessel CH, Corman VM. Severe acute
429 respiratory syndrome coronavirus 2-specific antibody responses in coronavirus disease 2019
430 patients. *Emerg Infect Dis* 2020.
- 431 8. Zhao J, Yuan Q, Wang H, et al. Antibody responses to SARS-CoV-2 in patients of novel
432 coronavirus disease 2019. *Clin Infect Dis* 2020.

- 433 9. Liu L, To KK, Chan KH, et al. High neutralizing antibody titer in intensive care unit patients
434 with COVID-19. *Emerg Microbes Infect* 2020; **9**(1): 1664-70.
- 435 10. Kellam P, Barclay W. The dynamics of humoral immune responses following SARS-CoV-2
436 infection and the potential for reinfection. *J Gen Virol* 2020; **101**(8): 791-7.
- 437 11. Callow KA, Parry HF, Sergeant M, Tyrrell DA. The time course of the immune response to
438 experimental coronavirus infection of man. *Epidemiol Infect* 1990; **105**(2): 435-46.
- 439 12. Edridge AWD, Kaczorowska J, Hoste ACR, et al. Seasonal coronavirus protective immunity is
440 short-lasting. *Nat Med* 2020.
- 441 13. Chen Y, Tong X, Li Y, et al. A comprehensive, longitudinal analysis of humoral responses
442 specific to four recombinant antigens of SARS-CoV-2 in severe and non-severe COVID-19 patients.
443 *PLoS Pathog* 2020; **16**(9): e1008796.
- 444 14. Ibarondo FJ, Fulcher JA, Goodman-Meza D, et al. Rapid Decay of Anti-SARS-CoV-2
445 Antibodies in Persons with Mild Covid-19. *New England Journal of Medicine* 2020; **383**(11): 1085-7.
- 446 15. Long Q-X, Tang X-J, Shi Q-L, et al. Clinical and immunological assessment of asymptomatic
447 SARS-CoV-2 infections. *Nature Medicine* 2020; **26**(8): 1200-4.
- 448 16. Rodda LB, Netland J, Shehata L, et al. Functional SARS-CoV-2-specific immune memory
449 persists after mild COVID-19. *medRxiv* 2020: 2020.08.11.20171843.
- 450 17. Gudbjartsson DF, Norddahl GL, Melsted P, et al. Humoral Immune Response to SARS-CoV-
451 2 in Iceland. *N Engl J Med* 2020.
- 452 18. Muecksch F, Wise H, Batchelor B, et al. Longitudinal analysis of clinical serology assay
453 performance and neutralising antibody levels in COVID19 convalescents. *medRxiv* 2020.
- 454 19. Wu J, Liang B, Chen C, et al. SARS-CoV-2 infection induces sustained humoral immune
455 responses in convalescent patients following symptomatic COVID-19. *medRxiv* 2020:
456 2020.07.21.20159178.
- 457 20. Harris RJ, Whitaker HJ, Andrews NJ, et al. Serological surveillance of SARS-CoV-2: trends
458 and humoral response in a cohort of public health workers. *medRxiv* 2020: 2020.10.21.20216689.
- 459 21. Ripperger TJ, Uhrlaub JL, Watanabe M, et al. Orthogonal SARS-CoV-2 Serological Assays
460 Enable Surveillance of Low-Prevalence Communities and Reveal Durable Humoral Immunity.
461 *Immunity* 2020.
- 462 22. Ward H, Atchison CJ, Whitaker M, et al. Antibody prevalence for SARS-CoV-2 in England
463 following first peak of the pandemic: REACT2 study in 100,000 adults. *medRxiv* 2020:
464 2020.08.12.20173690.
- 465 23. Augusto JB, Menacho K, Andiapen M, Bowles R. Healthcare Workers Bioresource: Study
466 outline and baseline characteristics of a prospective healthcare worker cohort to study immune
467 protection and pathogenesis in COVID-19. *Wellcome Open Res* 2020; **5**.
- 468 24. <https://www.fda.gov/media/137609/download>.
- 469 25. <https://diagnostics.roche.com/global/en/products/params/electsys-anti-sars-cov-2.html>.
- 470 26. Ainsworth M, Andersson M, Auckland K, et al. Performance characteristics of five
471 immunoassays for SARS-CoV-2: a head-to-head benchmark comparison. *The Lancet Infectious*
472 *Diseases* 2020.
- 473 27. Pflüger LS, Bannasch JH, Brehm TT, et al. Clinical evaluation of five different automated
474 SARS-CoV-2 serology assays in a cohort of hospitalized COVID-19 patients. *J Clin Virol* 2020; **130**:
475 104549.
- 476 28. Evaluation of the Euroimmun Anti-SARS-CoV-2 ELISA (IgG) serology assay for the detection
477 of anti-SARS-CoV-2 antibodies: Public Health England, 2020.
- 478 29. Reynolds CJ, Swadling L, Gibbons JM, et al. Healthcare workers with mild / asymptomatic
479 SARS-CoV-2 infection show T cell responses and neutralising antibodies after the first wave.
480 *medRxiv* 2020: 2020.10.13.20211763.

- 481 30. Treibel TA, Manisty C, Burton M, et al. COVID-19: PCR screening of asymptomatic health-
482 care workers at London hospital. *Lancet* 2020; **395**(10237): 1608-10.
- 483 31. Burbelo PD, Riedo FX, Morishima C, et al. Detection of Nucleocapsid Antibody to SARS-
484 CoV-2 is More Sensitive than Antibody to Spike Protein in COVID-19 Patients. *medRxiv* 2020:
485 2020.04.20.20071423.
- 486 32. Benacerraf B, Sebestyen M, Cooper NS. The clearance of antigen antibody complexes from
487 the blood by the reticuloendothelial system. *J Immunol* 1959; **82**(2): 131-7.
- 488 33. Khodadadi L, Cheng Q, Radbruch A, Hiepe F. The Maintenance of Memory Plasma Cells.
489 *Frontiers in Immunology* 2019; **10**: 721.
- 490 34. Bournazos S, Wang TT, Dahan R, Maamary J, Ravetch JV. Signaling by Antibodies: Recent
491 Progress. *Annual Review of Immunology* 2017; **35**(1): 285-311.
- 492 35. Grandjean L, Saso A, Ortiz A, et al. Humoral Response Dynamics Following Infection with
493 SARS-CoV-2. *medRxiv* 2020: 2020.07.16.20155663.
- 494 36. Iyer AS, Jones FK, Nodoushani A, et al. Dynamics and significance of the antibody response
495 to SARS-CoV-2 infection. *medRxiv* 2020.
- 496 37. Harvala H, Mehew J, Robb ML, et al. Convalescent plasma treatment for SARS-CoV-2
497 infection: analysis of the first 436 donors in England, 22 April to 12 May 2020. *Euro Surveill* 2020;
498 **25**(28): 2001260.
- 499 38. Sekine T, Perez-Potti A, Rivera-Ballesteros O, et al. Robust T Cell Immunity in Convalescent
500 Individuals with Asymptomatic or Mild COVID-19. *Cell* 2020; **183**(1): 158-68 e14.
- 501 39. Nguyen LH, Drew DA, Graham MS, et al. Risk of COVID-19 among front-line health-care
502 workers and the general community: a prospective cohort study. *The Lancet Public Health* 2020.

503 **Footnotes**

504 **Data Sharing Statement**

505 The COVIDsortium Healthcare Workers consortium was prospectively designed to create a
506 bioresource with high-dimensional sampling including viral PCR swabs, serology and PBMCs over an
507 initial 20 weeks and pending 6-month and 1 year timepoints (study protocol has been published and is
508 available online <https://covid-consortium.com>).²³ Applications for access to the individual participant
509 de-identified data (including data dictionaries) and samples can be made to the access committee via
510 an online application <https://covid-consortium.com/application-for-samples/>. Each application will be
511 reviewed, with decisions to approve or reject an application for access made on the basis of (i)
512 accordance with participant consent and alignment to the study objectives (ii) evidence for the
513 capability of the applicant to undertake the specified research and (iii) availability of the requested
514 samples. The use of all samples and data will be limited to the approved application for access and
515 stipulated in the material and data transfer agreements between participating sites and investigators
516 requesting access.

517 **Role of the funding source**

518 Funding for COVIDsortium was donated by individuals, charitable Trusts, and corporations including
519 Goldman Sachs, Citadel and Citadel Securities, The Guy Foundation, GW Pharmaceuticals, Kusuma
520 Trust, and Jagclif Charitable Trust, and enabled by Barts Charity with support from UCLH Charity.
521 Wider support is acknowledged on the COVIDsortium website. Institutional support from Barts Health
522 NHS Trust and Royal Free NHS Foundation Trust facilitated study processes, in partnership with

523 University College London and Queen Mary University London. Serology tests (anti-S1 and anti-NP)
524 were funded by Public Health England.

525 JCM, CM and TAT are directly and indirectly supported by the University College London Hospitals
526 (UCLH) and Barts NIHR Biomedical Research Centres and through the British Heart Foundation
527 (BHF) Accelerator Award (AA/18/6/34223). TAT is funded by a BHF Intermediate Research
528 Fellowship (FS/19/35/34374). MN is supported by the Wellcome Trust (207511/Z/17/Z) and by NIHR
529 Biomedical Research Funding to UCL and UCLH. RJB/DMA are supported by MRC Newton
530 (MR/S019553/1 and MR/R02622X/1), NIHR Imperial Biomedical Research Centre (BRC):ITMAT,
531 Cystic Fibrosis Trust SRC, and Horizon 2020 Marie Curie Actions. MKM is supported by the
532 UKRI/NIHR UK-CIC grant, a Wellcome Trust Investigator Award (214191/Z/18/Z) and a CRUK
533 Immunology grant (26603) AM is supported by Rosetrees Trust, The John Black Charitable
534 Foundation, and Medical College of St Bartholomew's Hospital Trust. RKG is funded by National
535 Institute for Health Research (DRF-2018-11-ST2-004).

536 The funders had no role in study design, data collection, data analysis, data interpretation, or writing
537 of the report. The corresponding author had full access to all the data in the study and had final
538 responsibility for the decision to submit for publication.

Figures

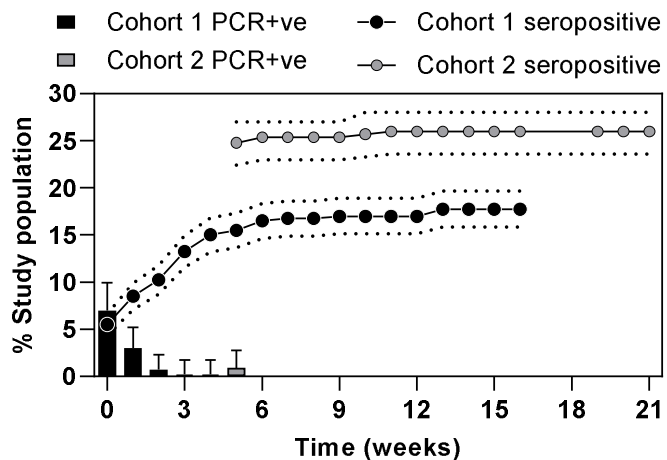


Figure 1. Longitudinal infection with SARS-COV-2 over 21 weeks across 731 healthcare workers.

Results from testing for SARS-CoV-2 by cohort showing weekly PCR percentage positivity (weekly results, 95% CI) and seropositivity (cumulative percentage using combined anti-S1 IgG and anti-NP IgM/IgG, standard error).

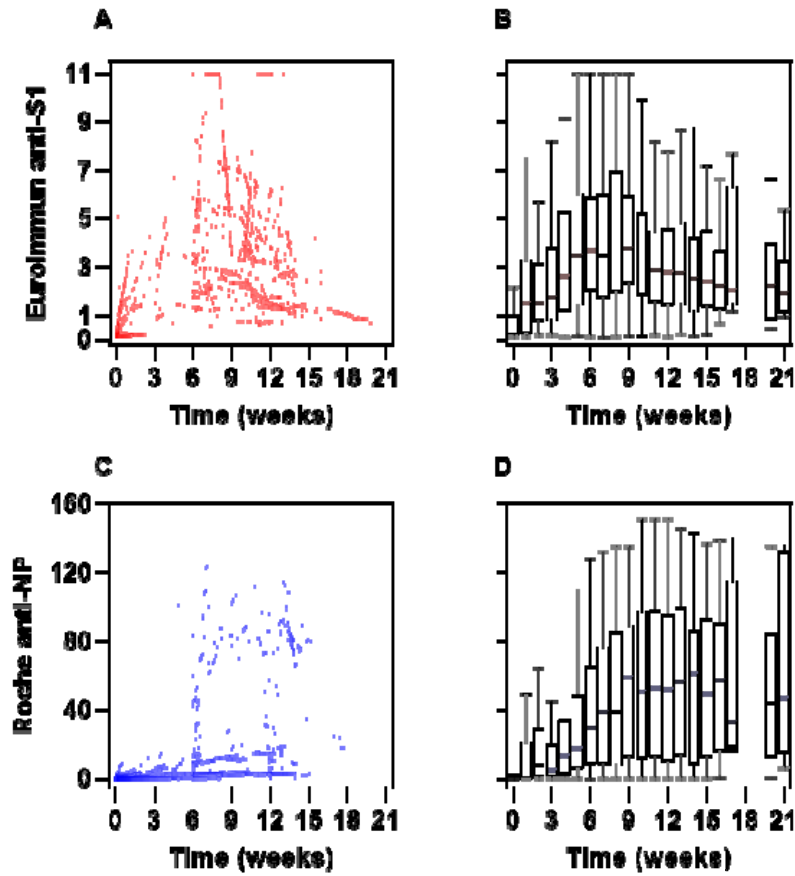


Figure 2. Longitudinal antibody responses across all timepoints in participants seropositive at any timepoint

Individual participant data (left) and time ordered aggregate data (right) for Euroimmun anti-S1 antibody assay (A-B) and Roche combined anti-NP antibody assay (C-D) showing the heterogeneity in antibody responses between individuals and the differences in antibody kinetics between assays, with an earlier peak and decline in anti-S1 compared with anti-NP antibodies.

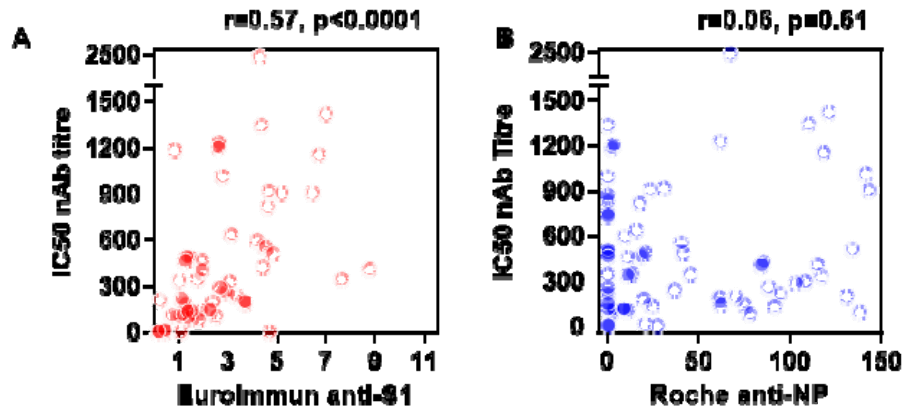


Figure 3. Correlation of anti-S1 and anti-NP antibody measurements with neutralising antibody titres at 16-18 weeks.

Comparison of neutralising antibody (nAb) titres represented as 50% inhibitory concentrations (IC) with Euroimmun anti-S1 levels (A) and Roche anti-NP levels (B) in 54 participants with nAb measurements and near-contemporaneous (± 2 weeks) Euroimmun and Roche serology. R and p values by Spearman rank correlations.

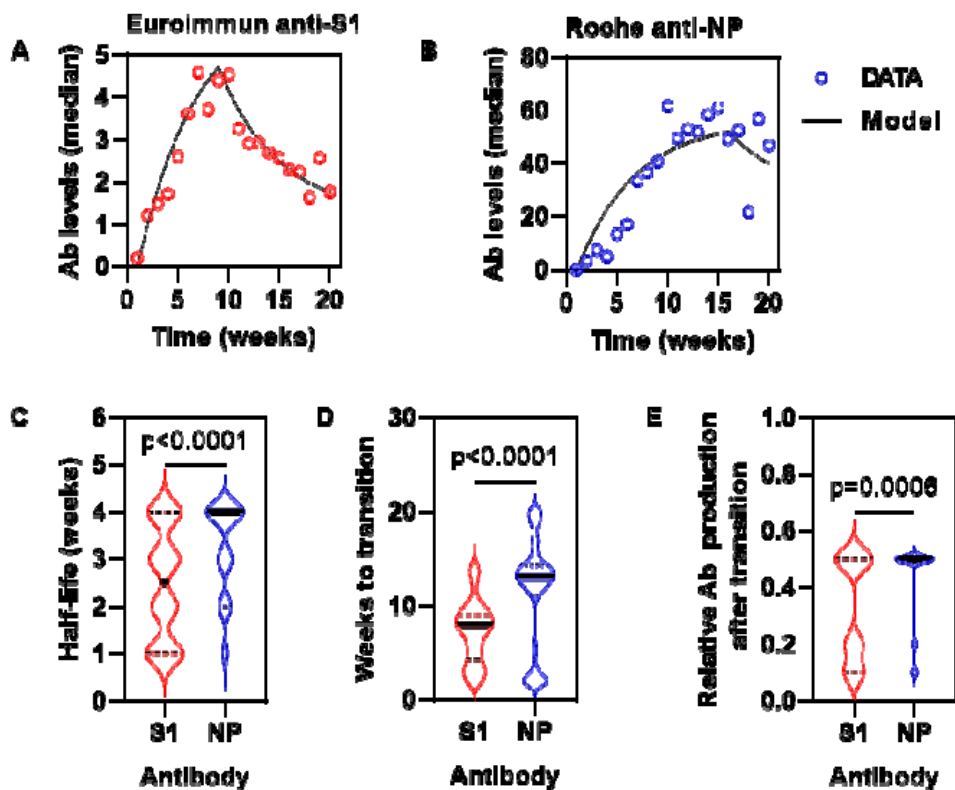


Figure 4. Mathematical modelling of kinetics of circulating anti-S1 and anti-NP antibodies.

Model fit to aggregate (median) data from all seropositive participants for anti-S1 (A) and anti-NP (B) assays. Best fit model parameters for individual seropositive participants for half-life of antibody clearance (C), time to transition point of lower antibody production (D) and relative reduction in antibody production following this transition point (E). Horizontal lines (C-E) show median and interquartile range.

Figure 1

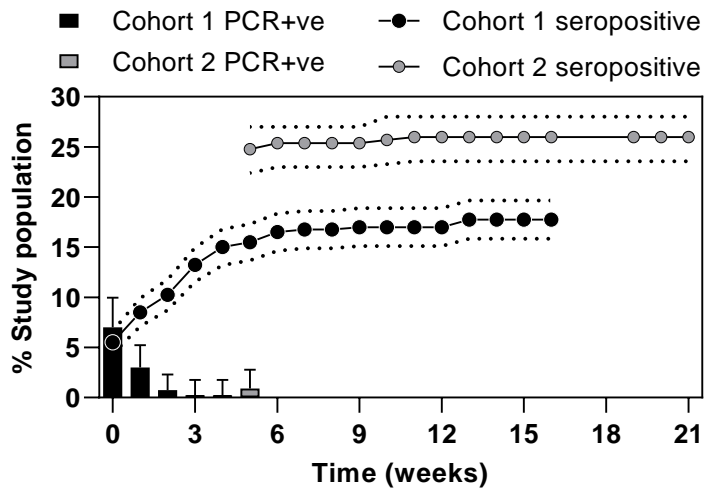


Figure 2

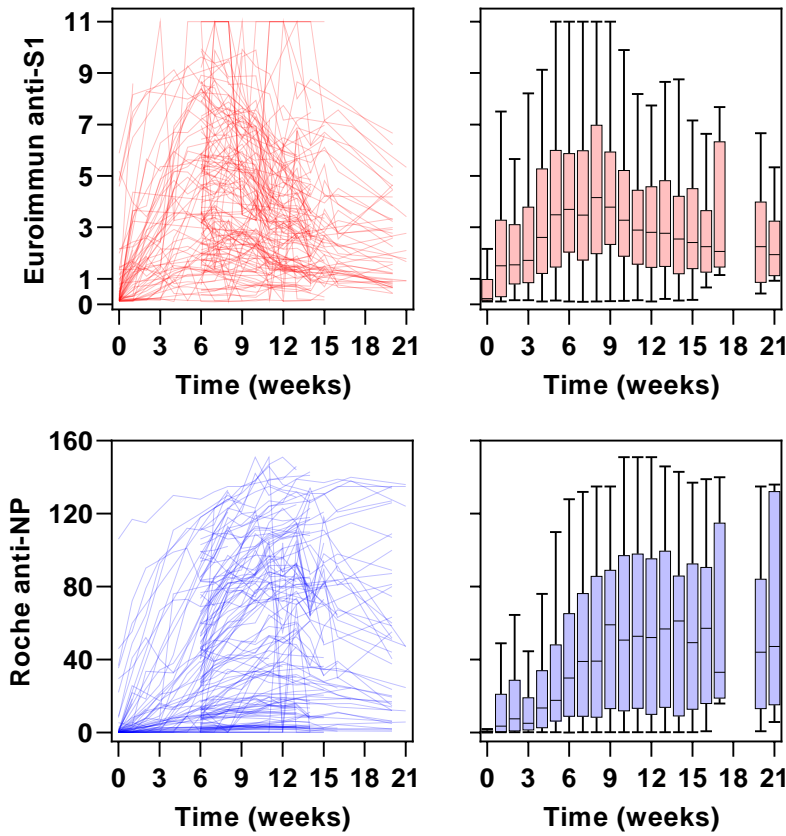


Figure 3

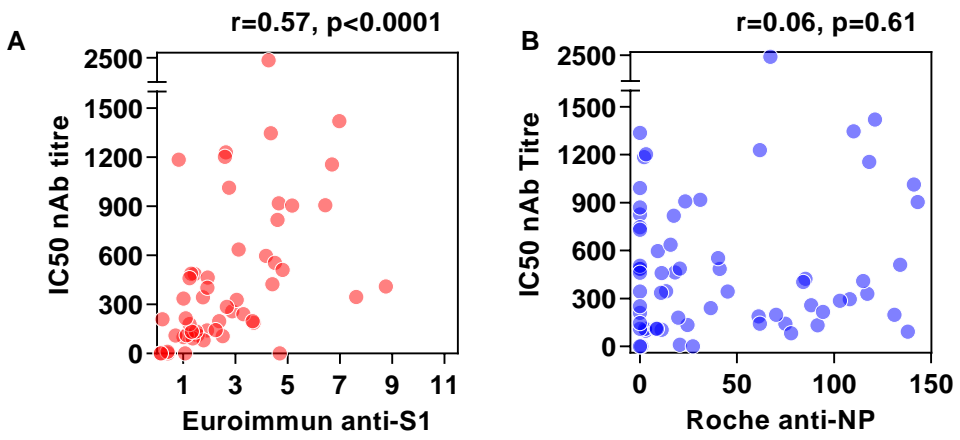


Figure 4

