

The duration, dynamics and determinants of SARS-CoV-2 antibody responses in individual healthcare workers

Sheila F Lumley^{1,3*}, Jia Wei^{2,3*}, Denise O'Donnell³, Nicole E Stoesser^{3,4,5}, Philippa C Matthews^{3,4,5}, Alison Howarth³, Stephanie B Hatch³, Brian D Marsden^{3,6}, Stuart Cox¹, Tim James¹, Liam Peck⁶, Thomas Ritter⁶, Zoe de Toledo⁶, Richard J Cornall³, E Yvonne Jones³, David I Stuart³, Gavin Screatton³, Daniel Ebner^{3,8}, Sarah Hoosdally^{3,4,5}, Derrick W Crook^{3,4,5}, Oxford University Hospitals Staff Testing Group, Christopher P Conlon³, Koen B Pouwels^{5,9}, A Sarah Walker^{3,4,5}, Tim EA Peto^{3,4,5}, Timothy M Walker^{3,10}, Katie Jeffery¹, David W Eyre^{2,4,5,11}

¹Oxford University Hospitals NHS Foundation Trust, Oxford, UK

²Big Data Institute, University of Oxford, Oxford, UK

³Nuffield Department of Medicine, University of Oxford, Oxford, UK

⁴NIHR Oxford Biomedical Research Centre, University of Oxford, Oxford, UK

⁵NIHR Health Protection Research Unit in Healthcare Associated Infections and Antimicrobial Resistance at University of Oxford in partnership with Public Health England, Oxford, UK

⁶Kennedy Institute of Rheumatology Research, University of Oxford, UK

⁶Medical School, University of Oxford, Oxford, UK

⁸Target Discovery Institute, University of Oxford, Oxford, UK

⁹Health Economics Research Centre, Nuffield Department of Population Health, University of Oxford, Oxford, UK

¹⁰Oxford University Clinical Research Unit, Ho Chi Minh City, Vietnam

¹¹Nuffield Department of Population Health, University of Oxford, Oxford, UK

*Contributed equally.

Corresponding author:

David Eyre

david.eyre@bdi.ox.ac.uk

+44 (0)1865 221081

Microbiology Department, John Radcliffe Hospital, Headley Way, Oxford, OX3 9DU

Keywords:

SARS-CoV-2; Covid-19; Serology; Antibody; Waning; Longitudinal

Running title:

SARS-CoV-2 antibody trajectories

Summary:

Serially measured SARS-CoV-2 anti-nucleocapsid IgG titres from 452 seropositive healthcare workers demonstrate levels fall by half in 85 days. From a peak result, detectable antibodies last a mean 137 days. Levels fall faster in younger adults and following asymptomatic infection.

Oxford University Hospitals Staff Testing Group:

University of Oxford Medical School staff testing team (University of Oxford, Oxford, UK): Molly Abbott, Roxanna Abhari, Hibatullah Abuelgasim, Tariq Ahmed-Firani, Isobel Argles, Rebecca Ashworth, Francesca Back, Susannah Black, Isabelle Brennan, Lottie Cansdale, Triya Chakravorty, Zahra Choudhury, Helen Clay, Rebecca Conway-Jones, Aisling Curtis, Joseph Cutteridge, Hannah Danbury, Hettie Davies, Lucy Denly, Julie Dequaire, Stoyan Dimitrov, Ella Dunlop, Polly Dunn, Cameron East, Ben Eastwood, Chantal Edwardes, Meirian Evans, Charlotte Fields, Sarah Flaherty, Thomas Foord, Rosie Freer, Hannah Fuchs, Alexander Grassam-Rowe, Lewis Greenan-Barrett, James Gunnell, Callum Harries, Edward Harris, Elizabeth Hatton, Conor Hennesey, Christian Holland, Ben Holloway, Gregory Howgego, Isaac Jarratt Barnham, Síle Johnson, Thomas Johnson, Daniela Johnstone, Rebecca Jurdon, Gabriella Kelly, Sven Kerneis, Beinn Khulusi, Annabel Killen, Stefan Kourdov, Mary Kumarendran, Hannah Laurenson-Schafer, Ruby Lawrence, Charlotte Lee, Angus Livingstone, Rosie Lynch, Tara Madsen, Ali Manji, James Marsh, Chris Mason, Angus Mccance, Euan Mccgovern, Ailsa Mckinlay, Alexandra Mighiu, Lancelot Millar, Yethrib Mohamed, Kenzo Motohashi, San Myat, Andrey Nezhentsev, Katherine O'Byrne, Temitope Okuwoga, Madeleine Oliver, Saxon Pattenden, Vimukthi Perera, Yva Petit, Florence Pickles, Maria Pikoula, Govind Randhawa, Krupa Ravi, Lara Reed, Caitlin Rigler, Charlotte Robinson, Evie Rothwell, Stephanie Santos-Paulo, Constantinos Savva, Alice Scharmeli, Samuel Scott, Zamin Shabir, Ishta Sharma, Remarez Sheehan, Afrah Shibu, Arun Somanathan, Samuel Sussmes, Owen Sweeney, Emily Swift, Gayatri Tadikamalla, Morwenna Tamblyn, Adan Taylor, Rebecca Te Water Naudé, Sarah Thomas, Connor Thompson, Lottie Till, Ross Toward, Charis Virgo, Imogen Vorley, Seren Waite, Harry Ward, Jocelyn Ward, Adam Watson, Lily Watson, Matthew Wedlich, Laura Wilkins, Jack Wilson, Joseph Wilson, William Wong, Rebecca Young

University of Oxford staff testing team (University of Oxford, Oxford, UK): George Doherty, James Kavanagh, Kevin K Chau, Philip W Fowler, Jeremy Swann, Denis Volk, Fan Yang-Turner, Donal Skelly, Fredrik Karpe, Matt J Neville, Lucas Martins Ferreira, Thomas Christott

Oxford University Hospitals staff testing team (Oxford University Hospitals NHS Foundation Trust, Oxford, UK): Ali Amini, Monique Andersson, Karen Anson, Lisa Aston, David Axten, Simran Barot, Trisha Bellinger, Adrian Bialek, Noemi Bodo, Andrew Brent, Mark Campbell, Vanessa Cox, Victoria Cox, Tammy Cronin, Timothy Davies, Alessio Deales, Louise Downs, Philip Drennan, Maria Dudareva, Laura Gates, Michelle Gates, Dominique Georgiou, Bernadett Gergely, Louise Holland, Nicola Jones, Sarah Jones, Sharon Kerr, Elaine Lawson, Stacy Looms, Michael Luciw, Diva Martins, Mary Mcknight, Alexander

Mentzer, Rebecca Millard, Tracey Mitchell, Lisa Morgan, Jordan Morrow, Emma Mortimore, Harriet Mullins, Heather Nevard, Anne-Marie O'Donnell, Kaisha Patel, Leon Peto, Jane Philips, Jessica Ponting, Roshni Ray, Maria Robles, Sonam Rughani, Nellia Sande, Robert Shaw, Emma-Jane Simons, Elizabeth Sims, Kyla Smit, Lucianne Smith, Justyna Szczurkowska, Zoe Thompson, Rachel Turford, Kim Vilca, Alexander Vogt, Fiona Warren, Laura Warren, Vicki Wharton, Alison Whitty, Heather Woodley, Barbara Wozniak, Bernadette Young

Oxford University Hospitals microbiology laboratory (Oxford University Hospitals NHS Foundation Trust, Oxford, UK): Anita Justice, Gerald Jesuthasan, Susan Wareing, Nurul Huda Mohamad Fadzillah, Kathryn Cann, Richard Kirton

Oxford University Hospitals Infection, Prevention and Control team (Oxford University Hospitals NHS Foundation Trust, Oxford, UK): Claire Sutton, Claudia Salvagno, Gabriella D'Amato, Gemma Pill, Lisa Butcher, Lydia Rylance-Knight, Merline Tabirao, Ruth Moroney, Sarah Wright

Abstract

Background

SARS-CoV-2 IgG antibody measurements can be used to estimate the proportion of a population exposed or infected and may be informative about the risk of future infection. Previous estimates of the duration of antibody responses vary.

Methods

We present 6 months of data from a longitudinal seroprevalence study of 3217 UK healthcare workers (HCWs). Serial measurements of IgG antibodies to SARS-CoV-2 nucleocapsid were obtained. Bayesian mixed linear models were used to investigate antibody waning and associations with age, gender, ethnicity, previous symptoms and PCR results.

Results

In this cohort of working age HCWs, antibody levels rose to a peak at 24 (95% credibility interval, CrI 19-31) days post-first positive PCR test, before beginning to fall. Considering 452 IgG seropositive HCWs over a median of 121 days (maximum 171 days) from their maximum positive IgG titre, the mean estimated antibody half-life was 85 (95%CrI, 81-90) days. The estimated mean time to loss of a positive antibody result was 137 (95%CrI 127-148) days. We observed variation between individuals; higher maximum observed IgG titres were associated with longer estimated antibody half-lives. Increasing age, Asian ethnicity and prior self-reported symptoms were independently associated with higher maximum antibody levels, and increasing age and a positive PCR test undertaken for symptoms with longer antibody half-lives.

Conclusion

IgG antibody levels to SARS-CoV-2 nucleocapsid wane within months, and faster in younger adults and those without symptoms. Ongoing longitudinal studies are required to track the long-term duration of antibody levels and their association with immunity to SARS-CoV-2 reinfection.

Introduction

Measurable IgG antibodies to SARS-CoV-2 antigens develop after many, but not all, SARS-CoV-2 infections.[1–4] Serological responses are typically detectable within 1-3 weeks.[5–8] This allows antibody assays to be used to estimate the proportion of a population exposed or infected. Additionally, although the extent of immunity associated with different antibody titres and other immune responses is yet to be fully determined, it is probable that antibody levels will provide some information about the risk and/or severity of future infection.

However, SARS-CoV-2 IgG antibody levels are dynamic over time.[9] This has implications for epidemiological studies, e.g. if IgG levels fall below detection thresholds before they are measured, past infections may be under ascertained. Similarly, if antibodies are a marker for protective immunity, their rate of fall would be of interest when estimating population protection.

Contrasting data have been made available on the longitudinal trajectory and longevity of antibodies induced by SARS-CoV-2 infection. For example, a US study showed IgG antibody levels to trimerised spike were relatively stable in 121 individuals around 110 days post symptom onset.[10] Similarly, data from 1215 individuals in Iceland suggest IgG responses to nucleocapsid and the S1 component of spike were sustained for 100-125 days.[11] However, others have noted declines in neutralizing antibodies over similar time periods.[12–14]

We have recently undertaken baseline serological testing in a cohort of >10,000 HCWs.[15] We now describe quantitative serial SARS-CoV-2 antibody measurements, demonstrating how responses fall over time and vary with age, ethnicity and previous symptoms.

Methods

Setting and participants

Oxford University Hospitals NHS Foundation Trust (OUH) offers both symptomatic and asymptomatic SARS-CoV-2 testing programmes to staff at its four teaching hospitals in Oxfordshire, UK. 12,411 healthcare workers (HCWs) have undergone serological testing to date; this analysis includes all 3217 HCWs who attended more than once for antibody testing.

SARS-CoV-2 PCR testing of nasal and oropharyngeal swabs for all symptomatic (new persistent cough, fever $\geq 37.8^{\circ}\text{C}$, anosmia/ageusia) staff was offered from 27-March-2020 onwards. Asymptomatic HCWs were invited to participate in voluntary staff testing for SARS-CoV-2 by nasal and oropharyngeal swab

PCR and serological testing from 23-April-2020 onwards. The cohort, associated methods and findings from the first test per individual have been previously described.[15] Following initial PCR and antibody testing, asymptomatic HCWs were invited to optionally attend for serological testing up to once every two months, with some offered more frequent screening as part of related studies. Asymptomatic staff were also offered optional SARS-CoV-2 PCR tests every two weeks. The symptomatic programme continued to offer on-site PCR testing whenever a staff member developed symptoms.

Laboratory assays

Serology for SARS-CoV-2 IgG to nucleocapsid protein was performed using the Abbott Architect i2000 chemiluminescent microparticle immunoassay (CMIA; Abbott, Maidenhead, UK). Antibody levels ≥ 1.40 manufacturer's arbitrary units were considered positive, 0.50-1.39 equivocal (following Abbott Diagnostics Product Information Letter PI1060-2020) and < 0.5 negative.

Statistical methods

Individuals with ≥ 1 positive antibody result (titre ≥ 1.40) and ≥ 2 antibody results were classified as showing rising titres only, falling or stable titres only, or both. Those with only one measurement could not be classified and were excluded. In those with falling/stable titres we estimated the duration of antibody responses from the maximum observed result using Bayesian linear mixed models and their association with age, gender, ethnicity, previous self-reported symptoms and PCR results (allowing correlated random intercept and slope terms, see Supplement). We assumed antibody levels fell exponentially, and so modelled \log_2 transformed antibody levels over time (observed data and fitted models demonstrated close congruence, Supplementary File). The incidence of Covid-19 in our hospital fell after a peak in March and April 2020,[15] such that re-exposure of HCWs was uncommon; we therefore had insufficient data to study boosting of antibody responses.

We additionally modelled the antibody trajectory from a first positive PCR test using a similar approach but allowing for non-linear effects of time rather than assuming an exponential decline.

We used Bayesian interval censored regression to estimate the proportion of individuals remaining antibody positive at varying times following their maximum antibody result (see Supplement).

Ethics

Deidentified data from staff testing were obtained from the Infections in Oxfordshire Research Database (IORD) which has generic Research Ethics Committee, Health Research Authority and Confidentiality Advisory Group approvals (19/SC/0403, 19/CAG/0144).

Results

A total of 3217 HCWs provided ≥ 2 samples for serological testing between 23-April and 20-October-2020 (Figure 1, Table 1). The median (IQR) [range] number of samples tested was 2 (2-2) [2-8] and time from the first to last sample was 124 (95-144) [3-174] days.

Observed IgG antibody trajectories are shown in Figure 2. 522 (16%) HCWs had ≥ 1 sample with detected SARS-CoV-2 IgG antibodies (titre ≥ 1.40 ; Figure 2A, 2B) and 90 (3%) had ≥ 1 sample with an equivocal maximum IgG titre (0.50-1.39; Figure 2C). Antibody titres in those with consistently negative results were broadly stable (Figure 2D), whereas falls were observed in 438/466 (94%) initially positive individuals, and in 61/83 (73%) with an initial equivocal titre (Figures 2A, 2C, 3). Consistent with prior infection in some individuals with equivocal titres and subsequent waning, there were more falls in antibody levels than expected by chance in those with titres of 0.80-1.39 (Figure 3).

Antibody trajectories after a positive IgG test

Among 522 individuals with ≥ 1 IgG-positive sample, 70 (13%) showed evidence of seroconversion with rising titres only and so were excluded from analyses of the duration of response following a positive IgG result (39/70 were PCR-positive and are included in a separate analysis below of responses following a positive PCR test). In the remaining 452 (87%), the median (IQR) [range] number of samples tested was 2 (2-3) [2-5] and time from the first to last sample was 121 (83-143) [4-171] days. Only 3/120 (3%) individuals with ≥ 3 measurements had a final titre above the minimum observed, i.e. potential evidence of boosting, and titre increases were small (6.30 \rightarrow 6.59, 2.48 \rightarrow 2.60, 1.22 \rightarrow 1.25). The median (IQR) age was 41 (29-50) years and 75% of participants were female (Table 1). The most common self-reported ethnic groups were White (302, 67%) and Asian (89, 20%; predominately south Asian and Filipino). 274 (61%) recalled self-identified Covid-19-like symptoms between 01-February-2020 and testing. 95 (21%) had a positive SARS-CoV-2 PCR following symptomatic testing and 59 (13%) a positive PCR during asymptomatic screening. It is likely that many of the remainder were infected prior to widespread availability of symptomatic testing or asymptomatic screening. The first positive PCR in each individual was prior to or on the day of their maximum antibody titre in all but 5/154 (3%) (who were tested 3, 8, 8, 11 and 17 days later).

Using a Bayesian statistical model, the trajectory of SARS-CoV-2 IgG antibody levels following the maximum measured antibody titre in each individual is shown in Figure 4A. The estimated mean

antibody half-life was 85 (95% credibility interval, CrI 81-90) days. The estimated mean maximum antibody level was 4.3 (95%CrI 4.1-4.4) arbitrary units. The mean trajectory crossed the diagnostic threshold of 1.40, switching from a positive to equivocal result at 137 (95%CrI 127-148) days. IgG level half-lives and starting maximum titres varied between individuals (Figures 4B and 4C respectively). Higher maximum observed IgG levels were correlated with longer estimated IgG half-lives, i.e. slower rates of decline over time (Figure 4D; Spearman's rank $R^2=0.65$, $p<0.0001$). Considering only maximum levels ≤ 7.50 to avoid titres near the upper limit of quantification yielded similar results ($R^2=0.61$, $p<0.0001$).

To facilitate comparison with studies reporting only categorical antibody results, we considered the proportion of seropositive individuals remaining antibody-positive (as opposed to equivocal or negative) when observed at varying time intervals (Figure 5A) and using an interval censored survival analysis approach (Figure 5B). Consistent with the model in Figure 4, the median time remaining antibody positive was 166 (95%CrI 139-214) days.

Effect of demographics and other covariates

Age, self-reported ethnicity, prior symptoms compatible with Covid-19 and a positive SARS-CoV-2 PCR were independently associated with changes in antibody trajectories: affecting the starting maximum level (the intercept), the antibody half-life (the slope) or both (Table 2, Figure S1, details in Figures S2-S4 and Table S2).

Within this cohort of HCWs of working age, increasing age was independently associated with higher maximum antibody levels and a longer IgG half-life, 0.17 (95%CrI 0.07-0.25) arbitrary units and 3.40 (95%CrI 1.79-4.62) days per 10 years respectively (Table 2, Figure S5).

HCWs of Asian ethnicity had higher maximum antibody levels with adjusted increases of 0.54 (95%CrI 0.18-0.95) arbitrary units compared to White HCWs, with marginal evidence for longer antibody half-lives, by 6.28 (-0.44 to 14.8) days. Within the limits of the power of the study, there was no strong statistical evidence that antibody trajectories varied in other ethnic groups.

Prior self-reported symptoms were associated with a higher starting maximum level (adjusted increase 0.40 [95%CrI 0.12-0.69]), but not changes in antibody half-lives. There was moderate evidence that a positive PCR result arising from testing undertaken for symptoms, independently increased the starting maximum level by 0.30 (95%CrI -0.04 to 0.67) arbitrary units, and half-life by 9.56 (95%CrI 2.35-19.09)

days compared to those with no positive PCR. We observed no effect of gender with either maximum level or antibody half-life.

Sensitivity analysis

109 participants had ≥ 2 IgG readings after their maximum observed antibody titre and were included in a sensitivity analysis to investigate the impact of starting with each individual's maximum result on half-life estimates (which should be independent of starting values under the exponential decay assumption). Using only observations after the maximum antibody titre, the estimated half-life was 83.0 (95%CrI 71.8-97.2) days, consistent with the main analysis, with a lower estimated intercept (2.8 [95%CrI 2.5-3.1]), as expected.

Antibody trajectories following a positive PCR test

245 of the 3217 HCWs with ≥ 2 serology samples had a positive PCR test. 114/128 (89%) symptomatic HCW seroconverted (maximum IgG titre ≥ 1.40), including 11/12 (92%) who required hospital treatment, all other infections were mild. 79/117 (68%) identified through asymptomatic screening seroconverted. In the 52 individuals not showing evidence of seroconversion, all but 1 (98%) had ≥ 1 antibody test ≥ 14 days after their PCR-positive test, and in 29 (56%) this was before 90 days. PCR cycle threshold values were lower in individuals who seroconverted (Table S3).

Data from PCR-positive individuals who seroconverted were used to model antibody trajectories relative to a first positive PCR test. Antibody levels rose to a peak at 24 (95%CrI 19-31) days post-first positive PCR test, before beginning to fall (Figure 6). Comparing with the antibody trajectory estimated in the main analysis, the estimated rates of waning were consistent between the two models. Antibody trajectories were similar in those being tested following symptoms or during asymptomatic screening (Figure S6).

Discussion

Most epidemiological outbreak models assume that SARS-CoV-2 infection leads to the development of post-infection immunity for a defined duration. Here we describe the antibody trajectories of 452 SARS-CoV-2 IgG-seropositive HCWs over a median 121 days of follow-up from their maximum IgG titre. By following quantitative antibody responses, we could separately analyse changes in initial antibody levels and rates of waning. The estimated antibody half-life was 85 (95%CrI 81-90) days. We observed variation between individuals; higher maximum observed IgG titres were associated with longer half-

lives. Increasing age, Asian ethnicity and prior self-reported symptoms were independently associated with higher maximum antibody levels, and increasing age and a positive PCR test undertaken for symptoms with longer antibody half-lives. 39% of HCWs were asymptomatic throughout, and therefore our data also represent an important contribution to the literature, which to date has mainly focused on trajectories following symptomatic infection.

The durability of SARS-CoV-2 IgG seen here is more similar to the seasonal coronaviruses, where IgG waning and reinfection can occur within a year,[16] rather than to other epidemic coronaviruses, SARS-CoV and MERS-CoV, where most long-term studies have found that although IgG wanes over time, it is detectable up to 1-3 years later.[17] However, to some extent these findings are conditional on assay cut-offs which can be tuned to prioritise sensitivity or specificity. We observe higher IgG titres with longer durability occurring after symptomatic PCR-positive infection, consistent with data from Long et al. where 40% of asymptomatic individuals and 13% of the symptomatic group became negative for IgG in the early convalescent phase[18] and consistent with emerging coronaviruses, where antibody titres remained detectable longer after more severe illness,[17] waning more rapidly after asymptomatic infection.

Relatively short-term antibody responses have two epidemiological consequences. Firstly, antibody waning may lead to under-ascertainment of previous infections within the current pandemic, particularly in younger individuals following asymptomatic/mild infection. Additionally, IgG testing is unlikely to determine whether SARS-CoV-2 has circulated historically, e.g. in a particular geographic region. Older age (within this cohort of working age HCWs, up to 69 years) was associated with higher maximum observed IgG titres and longer half-lives. It is possible to hypothesise that this could arise from boosting of cross-reactive antibodies from prior exposure to a previously circulating human coronavirus. However, at least in the absence of recent boosting, circulating cross-reactive antibodies to SARS-CoV-2 spike are uncommon and cross-reacting neutralizing antibodies even rarer.[19]

Furthermore, although there is some cross-reactivity between seasonal coronaviruses in the same genetic group after natural and experimental infection, there is little cross-reactivity between seasonal coronaviruses and the emerging coronaviruses SARS-CoV and MERS-CoV.[17,20] We also see higher maximum observed IgG titres with moderate evidence of longer half-lives in Asian HCWs. Many of these individuals are from south Asia and the Philippines and were recruited overseas as adults to work in the UK healthcare system. It is possible to speculate that higher levels in this group may reflect

geographically-restricted exposures to similar viruses in the past, but for the reasons outlined above, the evidence for this is not strong.

Limitations

One limitation of our study was that our cohort of individuals consisted of adults of working age (17-69 years); further longitudinal studies will be required to investigate antibody trajectories in younger and older age groups. In addition, the small numbers of self-reported Black (n=25) and Other (n=36) ethnicities reduced/limited power to detect an association between these ethnicities and antibody trajectories. Furthermore, we do not account for multiple mediators, e.g. socioeconomic inequalities, that may link ethnicity to antibody responses in the absence of a direct causal relationship. Due to many of our staff developing symptoms before widespread SARS-CoV-2 PCR testing was available, only 34% of the antibody positive cohort had a documented positive PCR, and as a proportion of the cohort were asymptomatic throughout, we modelled time from maximum positive antibody test rather than time from first positive PCR or time from symptom onset in our main analysis of antibody durability. However under an exponential assumption, half-lives can be unbiasedly estimated from any measurements taken after a maximum; we excluded individuals with only evidence of rising titres to avoid underestimating half-lives. Further, data from those that were PCR positive were consistent with this analysis (Figure 6).

Multiple different assays are in use globally to characterize antibody responses to SARS-CoV-2. Here we use a commercially-available anti-nucleocapsid IgG assay; however, other antibody classes and targets, and aspects of immunity, including the innate and cellular responses are important in conferring post-infection immunity.[21] When comparing longitudinal studies of antibody durability, care must be taken, as the various assays have not yet been cross-calibrated, and implications for protective immunity are not fully understood.

Implications

It is widely recognized that pathogen-specific IgG levels decline after the acute phase of an infection. After the initial humoral response in which short-lived plasmablasts secrete high titres of antibody, long-lived plasma cells and memory B cells then contribute to longer-term antibody-mediated protection.[22] Although declines in IgG titres are expected, understanding the rate of decline, whether and when titres

fall below assay positive cut-offs, and how these titres relate to protection from subsequent asymptomatic and symptomatic re-infection is crucial.

Serological testing also helps quantify the extent of infection in populations, informing epidemiological models which direct public health strategies including nonpharmaceutical interventions. Seroprevalence measures, such as IgG antibody titres, are imperfect, as we describe, antibody levels within individuals wane, potentially leading to underestimated exposure due to loss of seropositivity. For example, in this study an estimated 33% of individuals seroreverted (i.e. fell below the positive cut off for the Abbott assay) within 3 months of IgG detection and an estimated 53% by 6 months (Figure 5B). This study highlights that sero-epidemiological surveys performed several months into this pandemic are likely to underestimate prior exposure in younger adults, as they tend to lose detectable antibody faster. Our findings contrast with the repeated cross-sectional REACT2 study,[23] which reported greater reductions over time at a population-level in the proportion of adults ≥ 65 years testing antibody-positive, and more sustained responses in those 18-24 years. Nearly all HCWs in our study were < 65 years, other differences may arise from study design, the assay used, and the potential for new infections predominantly in younger people[24] to replace others who had sero-reverted, supporting population-level seroprevalence (in our study these individuals are followed separately). Ongoing longitudinal studies are required to determine the long-term kinetics of antibody-mediated response to SARS-CoV-2, and responses to re-exposure.

Future work

Antibody dynamics have significant implications for the course and management of pandemics. Durability of immunity post-infection and post-vaccination will dictate the overall course of the pandemic. Further work is required to determine how prior infection and/or vaccination impacts the probability of future infection and severity of subsequent disease, determine the antibody-based correlates of this protection, and therefore the ability of serological tests to identify those who are immune. Longitudinal cohorts with baseline immunology are required to determine immune correlates of protection, to determine whether measurement of the current antibody status is enough to infer whether an individual have functional immunity or not, whether waning IgG titres are representative of waning immune protection, or whether protection remains even after an individual seroreverts.

Conclusion

We demonstrate that the half-life of SARS-CoV-2 anti-nucleocapsid IgG antibody responses in a cohort of adult HCWs is 85 days and varies between individuals by age, ethnicity and prior symptom history.

The extent and duration of immunity to SARS-CoV-2 infection following Covid-19 and its association with antibody titres remains a key question to be answered.

Acknowledgements

We would like to thank all OUH staff who participated in the staff testing programme, and the staff and medical students who ran the programme. This work uses data provided by healthcare workers and collected by the UK's National Health Service as part of their care and support. We thank all the people of Oxfordshire who contribute to the Infections in Oxfordshire Research Database. Research Database Team: L Butcher, H Boseley, C Crichton, DW Crook, DW Eyre, O Freeman, J Gearing (community), R Harrington, K Jeffery, M Landray, A Pal, TEA Peto, TP Quan, J Robinson (community), J Sellors, B Shine, AS Walker, D Waller. Patient and Public Panel: G Blower, C Mancey, P McLoughlin, B Nichols.

Declaration of interests

DWE declares lecture fees from Gilead, outside the submitted work. RJC is a founder shareholder and consultant to MIROBio, work outside the submitted work. No other author has a conflict of interest to declare.

Funding

This study was funded by the UK Government's Department of Health and Social Care. This work was supported by the National Institute for Health Research Health Protection Research Unit (NIHR HPRU) in Healthcare Associated Infections and Antimicrobial Resistance at Oxford University in partnership with Public Health England (PHE) (NIHR200915), the NIHR Biomedical Research Centre, Oxford and the Huo Family Foundation. The views expressed in this publication are those of the authors and not necessarily those of the NHS, the National Institute for Health Research, the Department of Health or Public Health England.

DWE is a Robertson Foundation Fellow and an NIHR Oxford BRC Senior Fellow. SFL is a Wellcome Trust Clinical Research Fellow. DIS is supported by the Medical Research Council (MR/N00065X/1). PCM holds a Wellcome Intermediate Fellowship (110110/Z/15/Z) and is an NIHR Oxford BRC Senior Fellow. BDM is supported by the SGC, a registered charity (number 1097737) that receives funds from AbbVie, Bayer Pharma AG, Boehringer Ingelheim, Canada Foundation for Innovation, Eshelman Institute for Innovation, Genome Canada through Ontario Genomics Institute [OGI-055], Innovative Medicines Initiative (EU/EFPIA) [ULTRA-DD grant no. 115766], Janssen, Merck KGaA, Darmstadt, Germany, MSD, Novartis Pharma AG, Pfizer, São Paulo Research Foundation-FAPESP, Takeda, and Wellcome. BDM is also

supported by the Kennedy Trust for Rheumatology Research. GS is a Wellcome Trust Senior Investigator and acknowledges funding from the Schmidt Foundation. TMW is a Wellcome Trust Clinical Career Development Fellow (214560/Z/18/Z). ASW is an NIHR Senior Investigator.

Figures

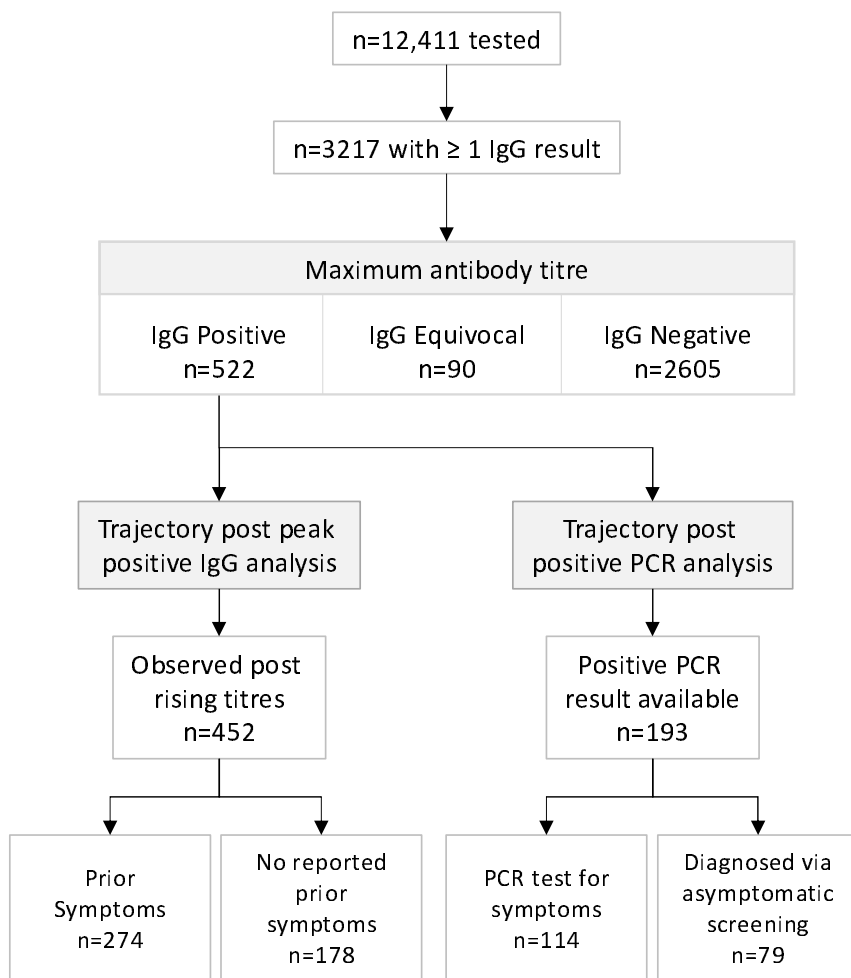


Figure 1. SARS-CoV-2 antibody trajectory cohorts.

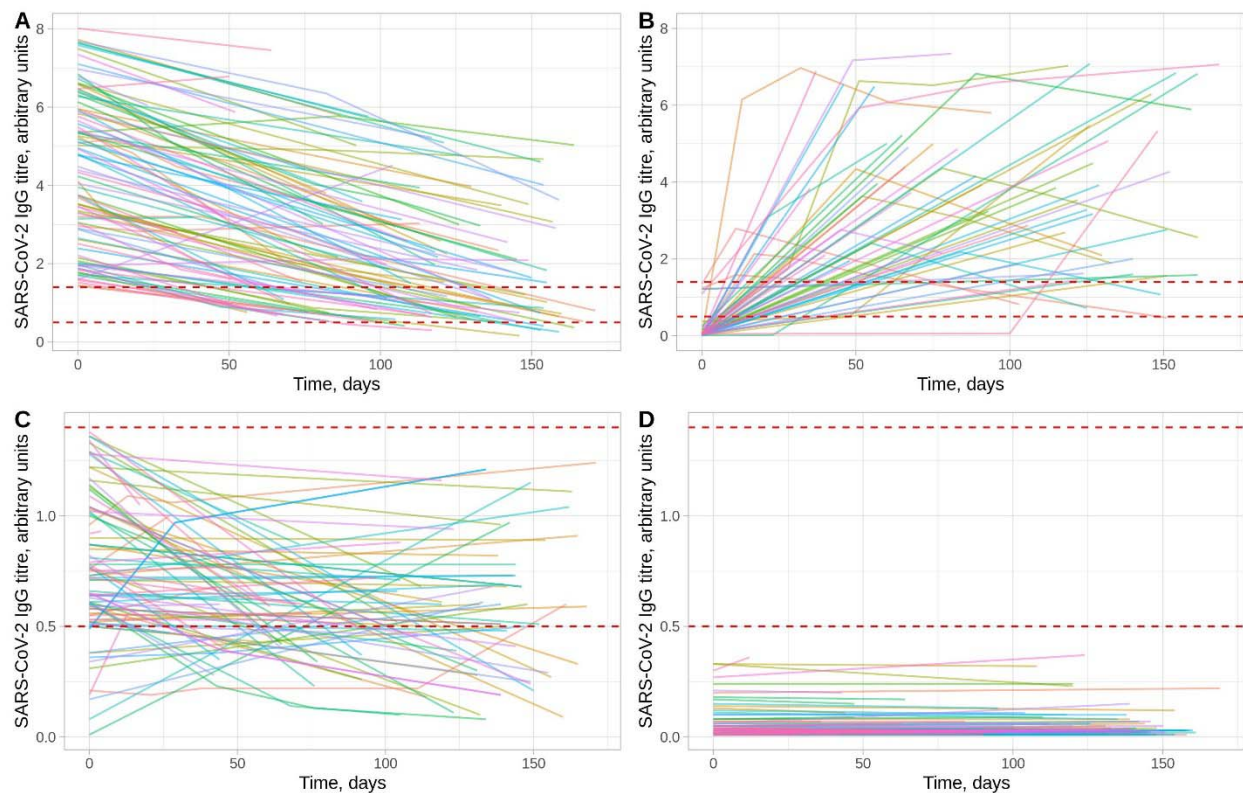


Figure 2. SARS-CoV-2 antibody trajectories in 3217 HCWs. Panels A and B show trajectories for HCWs with a positive result (≥ 1.40 arbitrary units) at some time. Panel A shows those whose first measurement was positive ($n=466$, only data from 100 randomly sampled individuals is shown to assist visualisation) and Panel B the remainder ($n=56$) in whom seroconversion was observed. Panel C shows those with a maximum titre that was equivocal ($0.50-1.39$, $n=90$). Panel D shows results from HCWs with a maximum titre that was negative (<0.50 , $n=2605$, only data from 100 randomly sampled individuals is shown to assist visualisation). The dashed lines indicate the thresholds for a positive and equivocal result, note the different y-axis scales in panels A and B versus panels C and D.

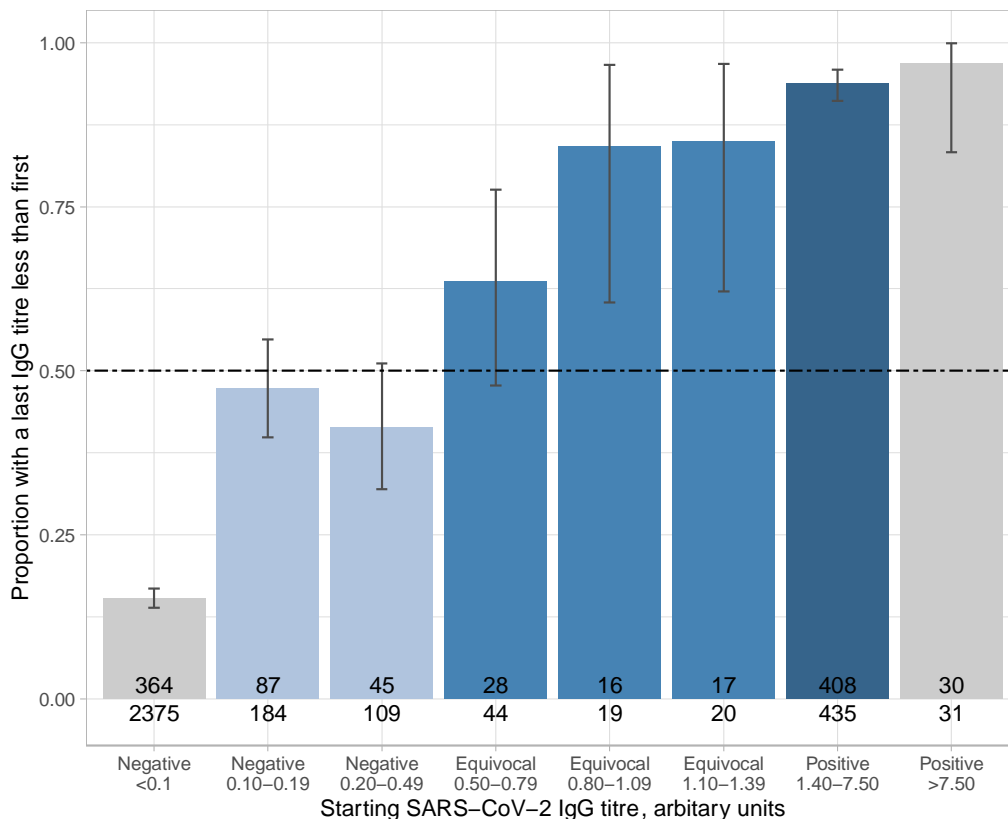


Figure 3. Proportion of 3217 HCWs with an observed fall in antibody titres over time. Titres <0.1 and >7.50 are shown in grey to indicate that the initial measurements are near the lower and upper limits of quantification and so the proportion observed for these bars is likely to be biased and should be discounted. Light, mid and dark blue bars represent initially negative, equivocal and positive antibody titres respectively. Under a random model the observed proportion of individuals with a last IgG titre less than the first is expected to be 0.50 as shown by the dashed line. The numerator and denominator for each bar is shown. Most individuals were sampled for the first time from May 2020 onwards, i.e. several weeks after the local peak in the first wave of the pandemic, such that an excess of falling titres is expected to consistent with previous infection.

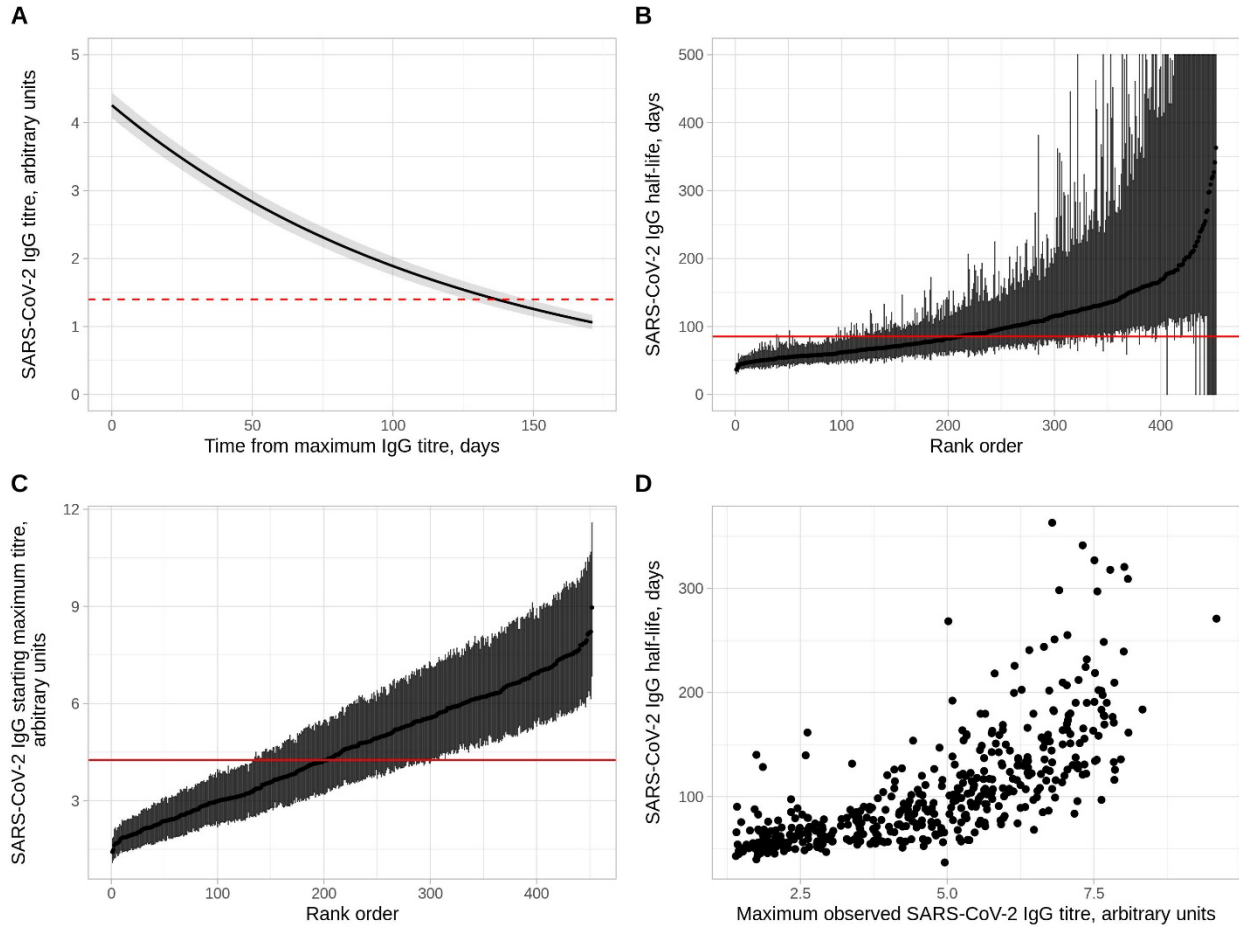


Figure 4. Anti-nucleocapsid IgG antibody trajectories in 452 SARS-CoV-2 seropositive HCWs. Panel A shows the overall mean trajectory of SARS-CoV-2 IgG antibody levels from the maximum observed level (i.e. the model fixed effect). The posterior mean and 95% credibility interval are shown as a solid line and shaded area. IgG antibody levels are shown in arbitrary units from the Abbott CMIA. The dashed red line represents the diagnostic threshold of 1.40 arbitrary units. Panel B shows the estimated SARS-CoV-2 IgG half-life with 95% CrI by days for all participants, ranked by its value. The solid red line indicates the overall mean. Credibility intervals exceeding 500 days are truncated at 500 days. Panel C shows the estimated maximum antibody level with 95% CrI for all participants, ranked by its value. The solid red line indicates the overall mean. Panel D shows a comparison of maximum observed SARS-CoV-2 IgG antibody level and the estimated SARS-CoV-2 IgG half-life per individual.

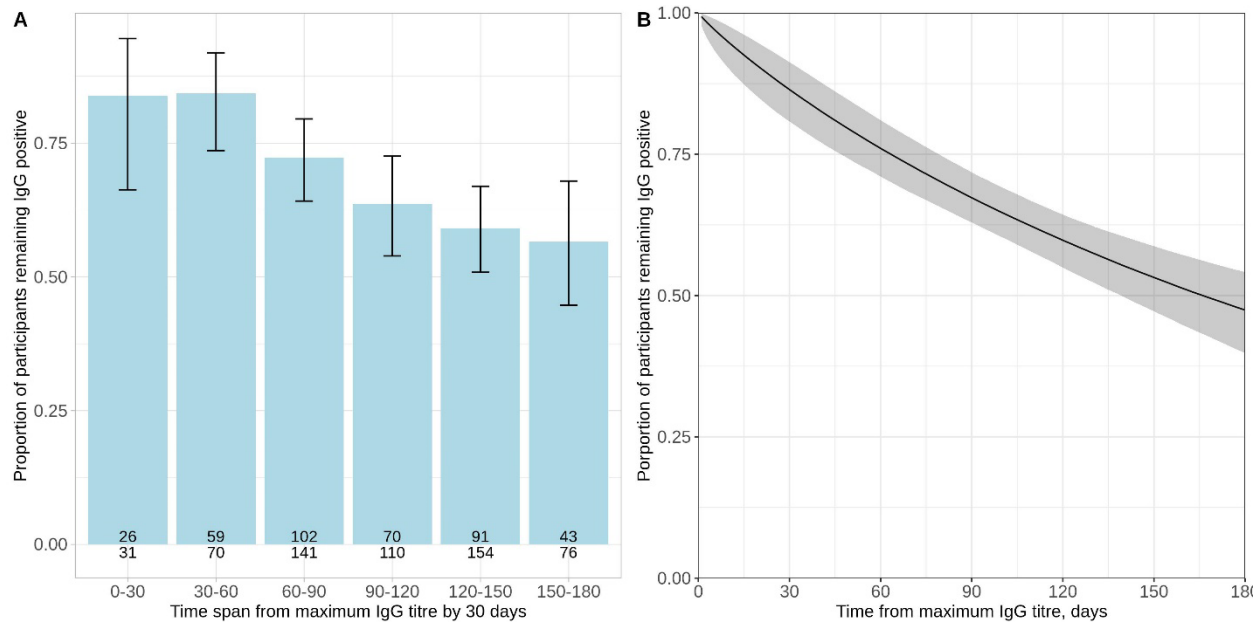


Figure 5. Proportion of HCWs remaining antibody positive by days following their maximum antibody level. Panel A shows the observed proportion in 30-day intervals with binomial 95% confidence intervals. The number of individuals tested and the number of individuals remaining antibody positive is shown at the base of each bar. Panel B shows the results of a Bayesian interval censored survival analysis, the posterior mean and 95% credibility interval are shown.

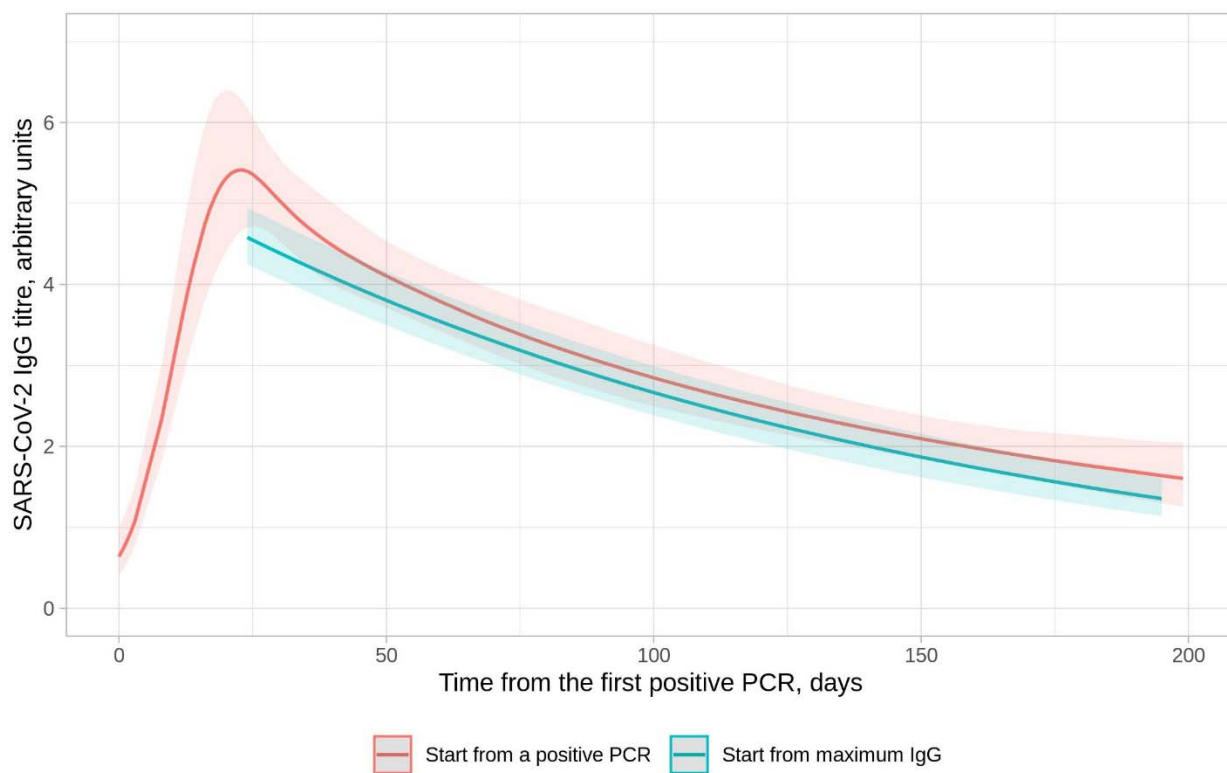


Figure 6. Comparison of SARS-CoV-2 IgG antibody levels following a positive PCR test and the maximum IgG level per individual in those with a positive PCR test. The x-axis value for the model starting from the maximum IgG level is aligned to the maximum point from the model starting with a positive PCR test. The model starting from a positive PCR is fitted with a 5-knot spline (3 interior knots at $t=10$, $t=30$, and $t=50$, locations chosen based on model fit).

Tables

Characteristic	Whole cohort n (%) or median (IQR) [Range]	452 HCWs with a positive antibody result and ≥1 subsequent sample n (%) or median (IQR) [Range]
Age		
Age, years	39 (29-50) [16-76]	41 (29-50) [17-69]
Gender		
Female	2542 (79)	340 (75)
Male	673 (21)	112 (25)
Not disclosed	2 (<1)	
Self-reported ethnicity		
White	2473 (77)	302 (67)
Black	90 (3)	25 (6)
Asian	440 (14)	89 (20)
Other	214 (7)	36 (8)
Covid-19-like symptoms between 01 February 2020 and testing		
Yes	898 (28)	274 (61)
No	2319 (72)	178 (39)
Previous positive SARS-Cov-2 PCR		
Symptomatic	128 (4)	95 (21)
Asymptomatic	117 (4)	59 (13)
None	2972 (92)	298 (66)

Table 1. Baseline cohort demographics for 3217 HCWs and 452 HCWs with ≥1 positive SARS-CoV-2 IgG result and ≥1 subsequent follow up sample.

		Univariable model			Multivariable model		
		Posterior mean	95% CrI		Posterior mean	95% CrI	
Baseline model	Maximum antibody level (Intercept)	4.26	4.07	4.44	3.33	3.02	3.67
	Antibody level half-life	85.38	81.17	90.01	69.94	63.74	77.19
Gender model	Maximum antibody level (Intercept): Female	4.24	4.04	4.46			
	Antibody level half-life: Female	84.88	80.14	90.25			
	Change in intercept: Male	0.03	-0.40	0.47	-0.05	-0.34	0.25
	Change in half-life: Male	1.95	-8.26	13.12	-0.40	-5.66	5.30
Age model	Maximum antibody level (Intercept): 41 years (median)	3.82	3.56	4.10			
	Antibody level half-life: 41 years (median)	75.27	69.71	81.46			
	Change in intercept: per 10-year older	0.21	0.10	0.30	0.17	0.07	0.25
	Change in half-life: per 10-year older	4.07	2.52	5.17	3.40	1.79	4.62
Ethnicity model	Maximum antibody level (Intercept): White	4.03	3.82	4.24			
	Antibody level half-life: White	81.48	76.69	86.66			
	Change in intercept: Black	0.48	-0.30	1.37	0.37	-0.21	1.03
	Change in intercept: Asian	0.83	0.32	1.34	0.54	0.18	0.95
	Change in intercept: Other	0.59	-0.10	1.37	0.44	-0.07	1.00
	Change in half-life: Black	7.03	-	31.13	2.63	-6.92	15.03
	Change in half-life: Asian	14.64	11.41	29.29	6.28	-0.44	14.76
Change in half-life: Other	14.85	-3.12	38.26	8.24	-1.13	20.55	
Prior symptom	Maximum antibody level (Intercept): No	3.90	3.64	4.16			

model	Antibody level half-life: No	83.57	77.38	90.61			
	Change in intercept: Yes	0.60	0.24	0.96	0.40	0.12	0.69
	Change in half-life: Yes	2.85	-5.99	11.59	0.26	-4.52	5.19
PCR model	Maximum antibody level (Intercept): No	4.09	3.87	4.32			
	Antibody level half-life: No	80.23	75.48	85.28			
	Change in intercept: Positive (symptomatic)	0.65	0.17	1.16	0.30	-0.04	0.67
	Change in intercept: Positive (asymptomatic)	0.23	-0.31	0.81	0.14	-0.24	0.55
	Change in half-life: Positive (symptomatic)	19.60	7.22	35.66	9.56	2.35	19.09
	Change in half-life: Positive (asymptomatic)	13.49	-0.31	30.37	6.45	-0.86	15.85

Table 2. Univariable and multivariable models of determinants of SARS-CoV-2 antibody trajectories.

Posterior mean and 95% credibility intervals for the maximum antibody level (model intercept) and antibody half-life (model slope) are shown. See Supplementary Table S2 for other model parameters and statistical analysis quality metrics.

References

1. Deeks JJ, Dinnes J, Takwoingi Y, et al. Antibody tests for identification of current and past infection with SARS-CoV-2. *Cochrane Db Syst Rev* **2020**; 6:CD013652.
2. The National SARS-CoV-2 Serology Assay Evaluation Group. Performance characteristics of five immunoassays for SARS-CoV-2: a head-to-head benchmark comparison. *Lancet Infect Dis* **2020**;
3. Wellinghausen N, Plonné D, Voss M, Ivanova R, Frodl R, Deininger S. SARS-CoV-2-IgG response is different in COVID-19 outpatients and asymptomatic contact persons. *J Clin Virol* **2020**; 130:104542.
4. Fafi-Kremer S, Bruel T, Madec Y, et al. Serologic responses to SARS-CoV-2 infection among hospital staff with mild disease in eastern France. *Ebiomedicine* **2020**; 59:102915.
5. Suhandynata RT, Hoffman MA, Kelner MJ, McLawhon RW, Reed SL, Fitzgerald RL. Longitudinal Monitoring of SARS-CoV-2 IgM and IgG Seropositivity to Detect COVID-19. *J Appl Laboratory Medicine* **2020**; 5:jfaa079-.
6. Xiang F, Wang X, He X, et al. Antibody Detection and Dynamic Characteristics in Patients with COVID-19. *Clin Infect Dis* **2020**;
7. To KK-W, Tsang OT-Y, Leung W-S, et al. Temporal profiles of viral load in posterior oropharyngeal saliva samples and serum antibody responses during infection by SARS-CoV-2: an observational cohort study. *Lancet Infect Dis* **2020**; 20:565–574.
8. Long Q-X, Liu B-Z, Deng H-J, et al. Antibody responses to SARS-CoV-2 in patients with COVID-19. *Nat Med* **2020**; 26:845–848.
9. Adams ER, Ainsworth M, Anand R, et al. Antibody testing for COVID-19: A report from the National COVID Scientific Advisory Panel. *Wellcome Open Res* **2020**; 5:139.
10. Wajnberg A, Amanat F, Firpo A, et al. Robust neutralizing antibodies to SARS-CoV-2 infection persist for months. *Science* **2020**; eabd7728.
11. Gudbjartsson DF, Norddahl GL, Melsted P, et al. Humoral Immune Response to SARS-CoV-2 in Iceland. *New Engl J Med* **2020**;
12. Seow J, Graham C, Merrick B, et al. Longitudinal evaluation and decline of antibody responses in SARS-CoV-2 infection. *Nat Microbiol* **2020**;
13. Robbiani DF, Gaebler C, Muecksch F, et al. Convergent antibody responses to SARS-CoV-2 in convalescent individuals. *Nature* **2020**; 584:437–442.
14. Muecksch F, Wise H, Batchelor B, et al. Longitudinal analysis of clinical serology assay performance and neutralising antibody levels in COVID19 convalescents. *Medrxiv* **2020**;
<https://doi.org/10.1101/2020.08.05.20169128>
15. Eyre DW, Lumley SF, O'Donnell D, et al. Differential occupational risks to healthcare workers from SARS-CoV-2 observed during a prospective observational study. *Elife* **2020**; 9:e60675.

16. Edridge AWD, Kaczorowska J, Hoste ACR, et al. Seasonal coronavirus protective immunity is short-lasting. *Nat Med* **2020**; :1–3.
17. Huang AT, Garcia-Carreras B, Hitchings MDT, et al. A systematic review of antibody mediated immunity to coronaviruses: kinetics, correlates of protection, and association with severity. *Nat Commun* **2020**; 11:4704.
18. Long Q-X, Tang X-J, Shi Q-L, et al. Clinical and immunological assessment of asymptomatic SARS-CoV-2 infections. *Nat Med* **2020**; 26:1200–1204.
19. Lipsitch M, Grad YH, Sette A, Crotty S. Cross-reactive memory T cells and herd immunity to SARS-CoV-2. *Nat Rev Immunol* **2020**; 20:709–713.
20. Iyer AS, Jones FK, Nodoushania A, et al. Dynamics and significance of the antibody response to SARS-CoV-2 infection. *Medrxiv* **2020**; <https://doi.org/10.1101/2020.07.18.20155374>
21. Tan AT, Linster M, Tan CW, et al. Early induction of SARS-CoV-2 specific T cells associates with rapid viral clearance and mild disease in COVID-19 patients. *Biorxiv* **2020**; :2020.10.15.341958.
22. Stephens DS, McElrath MJ. COVID-19 and the Path to Immunity. *Jama* **2020**; 324:1279–1281.
23. Ward H, Cooke G, Atchison C, et al. Declining prevalence of antibody positivity to SARS-CoV-2: a community study of 365,000 adults. *Medrxiv* **2020**; <https://doi.org/10.1101/2020.10.26.20219725>
24. Pouwels KB, House T, Prtichard E, et al. Community prevalence of SARS-CoV-2 in England during April to September 2020: Results from the ONS Coronavirus Infection Survey. *Medrxiv* **2020**; <https://doi.org/10.1101/2020.10.26.20219428>