

1 Service user experiences of community services for Complex  
2 Emotional Needs: A qualitative thematic synthesis  
3

4 Authors:

5 Luke Sheridan Rains<sup>1</sup>, Athena Echave<sup>2</sup>, Jessica Rees<sup>2</sup>, Hannah Rachel Scott<sup>2</sup>, Billie Lever-  
6 Taylor<sup>1</sup>, Eva Broeckelmann<sup>3</sup>, Thomas Steare<sup>1</sup>, Phoebe Barnett<sup>4</sup>, Chris Cooper<sup>4</sup>, Tamar  
7 Jeynes<sup>3</sup>, Jessica Russell<sup>3</sup>, Sian Oram<sup>5</sup>, Sarah Rowe<sup>2</sup>, Sonia Johnson<sup>1</sup>

8

9 1 - NIHR Mental Health Policy Research Unit, Division of Psychiatry, University College  
10 London

11 2 - Division of Psychiatry, University College London

12 3 - NIHR Mental Health Policy Research Unit Complex Emotional Needs Lived Experience  
13 Working Group, Health Service and Population Research Department, Institute of  
14 Psychiatry, Psychology & Neuroscience, King's College London

15 4 - Department of Clinical, Educational and Health Psychology, University College London

16 5 - NIHR Mental Health Policy Research Unit, Health Service and Population Research  
17 Department, Institute of Psychiatry, Psychology & Neuroscience, King's College London

## 18 Abstract

### 19 Background

20 There is a recognised need to develop clear service models and pathways to provide  
21 high quality care in the community for people with complex emotional needs, who may have  
22 been given a “personality disorder” diagnosis. Services should be informed by the views of  
23 people with these experiences.

### 24 Aims

25 To systematically review and synthesise qualitative studies on service user  
26 experiences of community mental health care for Complex Emotional Needs.

### 27 Methods

28 We searched six bibliographic databases for papers published since 2003. We  
29 included peer reviewed studies reporting data on service user experiences and views about  
30 good care from community-based mental health services for adults with CEN, including  
31 generic mental health services and specialist “personality disorder” services. Studies using  
32 any qualitative method were included and thematic synthesis used to identify over-arching  
33 themes.

### 34 Results

35 Forty-seven papers were included. Main themes were: 1) The need for a long-term  
36 perspective on treatment journeys; 2) The need for individualised and holistic care; 3) Large  
37 variations in accessibility and quality of mental health services; 4) The centrality of  
38 therapeutic relationships; 5) Impacts of ‘personality disorder’ diagnosis. Themes tended to  
39 recur across studies from different countries and years.

### 40 Discussion

41 Recurrent major themes included wanting support that is individualised and holistic,  
42 provides continuity over long journeys towards recovery, and that is delivered by empathetic  
43 and well-informed clinicians who are hopeful but realistic about the prospects of treatment.  
44 Care that met these simple and clearly stated priorities tended to be restricted to often  
45 limited periods of treatment by specialist “personality disorder” services: generic and primary

46 care services were often reported as far from adequate. There is an urgent need to co-  
47 design and test strategies for improving long-term support and treatment care for people with  
48 “personality disorders” throughout the mental health care system.

## 49 Introduction

50 The prevalence of “personality disorder” diagnoses is high amongst people using  
51 community and outpatient services in Europe and the USA, with estimates ranging between  
52 40 and 92% [1]. Despite such significant levels of potential need and help-seeking, many  
53 concerns remain about the quality and accessibility of services for people given this  
54 diagnosis [2]. Stigmatising attitudes among professionals and a lack of therapeutic optimism  
55 are identified as some of the significant obstacles to the development and delivery of  
56 effective services [3-5].

57 In England, effective delivery of specialist care for people with a “personality  
58 disorder” diagnosis became a priority in the early 2000s with the publication of “Personality  
59 Disorder: No Longer A Diagnosis Of Exclusion” [6] and the initiation of a set of pilot projects  
60 to establish best models of community care [6]. Fast forward to 2017 and findings from a  
61 national survey suggested that there had been up to a fivefold increase in the number of  
62 organisations providing dedicated services for people with this diagnosis [2]. However, many  
63 service users with complex emotional needs (CEN) continued to face difficulties accessing  
64 good quality treatment in the community, either from specialist or generic mental health  
65 services, and the availability and nature of services remained highly variable [2]. This has  
66 resulted in a renewed policy focus on transforming “personality disorder” care in England,  
67 and in congruent recommendations from professional bodies [7]. Policy and guideline  
68 development aimed at achieving effective and acceptable care is now identified as a priority  
69 in England. Similar needs have been identified elsewhere, including in Australia and much  
70 of Europe [8,9].

71 The design and delivery of care pathways and treatments to address successfully the  
72 needs of for people with “personality disorders” needs to be informed by service users and  
73 their families and friends, as well as by scientific evidence and professional expertise. A  
74 2008 Delphi survey on community-based services for people with “personality disorders”  
75 found only 39% agreement amongst academic experts, service providers and services users

76 with regards to the organisation and delivery of care [10], highlights the complexity of  
77 designing services that are satisfactory to all stakeholders and the importance of including  
78 service user perspectives in service development [11].

79 Evidence from qualitative research into service user and carer views is potentially a  
80 useful adjunct to involvement of service users in service co-design, bringing a broad range of  
81 views and experiences from different contexts to service development. Two recent  
82 systematic reviews have presented relevant summaries of such evidence. In 2017, Katsakou  
83 and Pistrang reviewed evidence on the recovery experiences of people receiving treatment  
84 for “personality disorders”, reporting service user perspectives on helpful and unhelpful  
85 service characteristics [11]. Characteristics of services facilitating helpful change included a  
86 focus on providing a safe and containing environment, and on establishing a trusting  
87 relationship between service users and clinicians. Unhelpful characteristics included placing  
88 too much emphasis on achieving change and failing to achieve collaborative therapeutic  
89 relationships. In 2019, Lamont and Dickens published a broad systematic review and meta-  
90 synthesis of service user, carer, and family experiences of all types of mental health care  
91 received by people with a diagnosis of “Borderline Personality Disorder” [12]. Overall, they  
92 found that people had clear expectations about the professional support they should receive  
93 from services, including professionalism, clinical knowledge, respect, compassion, effective  
94 interventions, and positive and non-stigmatising attitudes from professionals. However,  
95 these expectations were frequently unmet. Instead, people felt that services were frequently  
96 confusing and encounters with professionals often problematic.

97 The current review, conducted primarily to inform development of NHS England  
98 specialist pathways, complements and extends the above with a specific focus on  
99 community, as opposed to crisis and inpatient services, aiming to synthesise literature on  
100 service user views relevant to understanding what constitutes good care in such settings.

101 A contentious question in this area regards the value of diagnosis. A substantial  
102 literature, including service user commentaries, discusses some advantages of making a

103 diagnosis of “personality disorder” in terms of clear explanations for service users and  
104 reliable categorisation for research. Balanced against this are serious critiques of diagnoses  
105 of “personality disorder” as stigmatising and potentially misogynistic, and of the lack of  
106 progress in delivering effective care that has been associated with its use. Given the  
107 seriousness of critiques of diagnostic labels, we have chosen in this paper to use an  
108 alternative term - complex emotional needs (CEN) to describe needs often associated with a  
109 diagnosis of “personality disorder”. Nonetheless, the literature that we have reviewed, as  
110 described in the supplementary material, largely refers to “personality disorder” [13-15].

## 111 Materials and Methods

### 112 Aims

113 To systematically review and synthesise qualitative literature on the experiences of  
114 service users with complex emotional needs (CEN) of community mental health care, and  
115 their views about what constitutes good quality care.

### 116 Search strategy and selection criteria

117 The CRD handbook guidance  
118 ([https://www.york.ac.uk/media/crd/Systematic\\_Reviews.pdf](https://www.york.ac.uk/media/crd/Systematic_Reviews.pdf)) and the PRISMA reporting  
119 guidelines were followed [16,17]. The protocol was prospectively registered on PROSPERO  
120 (CRD42019142728). The present review was part of the NIHR Mental Health Policy  
121 Research Unit's work programme on CEN, which included four systematic reviews  
122 (alongside the current review are reviews of qualitative studies of clinician experiences,  
123 quantitative studies of service outcomes, and economic evidence of cost-effectiveness). The  
124 protocol for the wider programme of work was also registered on PROSPERO  
125 (CRD42019131834). A single search strategy was used for the whole programme, and  
126 articles relevant to each review retrieved from the resulting pool of papers. The protocol was  
127 developed by the review team in collaboration with a working group of lived-experience  
128 researchers and subject experts.

129 Searches of MEDLINE (January 2003 - December 2019), Embase (January 2003 -  
130 December 2019), HMIC (January 2003 – December 2019), Social Policy and Practice  
131 (January 2003 – December 2019), CINAHL (January 2003 - December 2019) and ASSIA  
132 (January 2003 - January 2019) were conducted. The search strategy was supplemented  
133 with forward and backward citation searches of included articles. An additional search of  
134 EMBASE and MEDLINE (January 2003-November 2019) was performed to identify related  
135 systematic reviews, and the reference lists of relevant reviews were checked. Grey literature  
136 was identified through web searches and through searches of the above bibliographic  
137 databases. The full search strategy was peer reviewed using the PRESS checklist prior to

138 searching and is available [18], including a search narrative [19], in the supplementary  
139 materials.

140 Citations retrieved during searches were collated in Endnote and duplicates were  
141 removed [20]. As a single search strategy was used for a wider programme of work, initially  
142 titles and abstracts were independently double screened for all reviews simultaneously. Full  
143 text screening was then performed for citations that were potentially eligible for this review.  
144 All papers thought to meet inclusion criteria and 20% of ineligible papers were double  
145 screened. In cases of disagreement or uncertainty, consensus was achieved through  
146 discussion with senior reviewers.

147 We included primary research studies published since 2003, when “Personality  
148 Disorder: No Longer A Diagnosis Of Exclusion” was published [6], as papers that are older  
149 than this may be less relevant to current needs. No limits were placed on the language or  
150 location of publications. Eligible studies were those that:

- 151 • Included recognised qualitative data collection and analysis methods. Written data  
152 from questionnaires were included if a recognised qualitative analysis method was  
153 used such as thematic analysis. Mixed-method studies were included if the  
154 qualitative data were reported separately to the quantitative data.
- 155 • Reported data from adults (aged 16 or over) with a “personality disorder” diagnosis.  
156 We also considered for inclusion papers focusing on care provided for complex  
157 emotional needs described as repeated self-harm, suicide attempts, complex trauma  
158 or complex PTSD, and emotional dysregulation or instability: for such studies we  
159 considered in each case whether the sample appeared to consist mainly of people  
160 with long-term difficulties similar to those that may result in a “personality disorder”  
161 diagnosis.
- 162 • Data extracted for this review related to care provided by community based mental  
163 health services, including primary mental health care services, generic community  
164 mental health teams, and specialist services for people with complex emotional



165 needs. Data related to care from residential, forensic, crisis services, or from  
166 specialist services for different conditions, such as substance misuse clinics, were  
167 excluded.

168 A more in-depth description of the eligibility criteria is contained in the supplementary  
169 materials.

## 170 Quality assessment and analysis

171 Data on the key characteristics of eligible studies were independently extracted by  
172 two reviewers using an Excel-based form. Quality assessment of included papers was  
173 performed using the Critical Appraisal Skills Programme (CASP) Qualitative Checklist by two  
174 researchers [21]. Any discrepancies were resolved through discussion. Study quality was not  
175 used in decisions about eligibility but is reported and incorporated into the meta-synthesis.

176 Data were analysed using thematic synthesis [22]. In the first stage, preliminary  
177 codes were developed, focusing on themes relevant to understanding service user views  
178 about what constitutes good care. Two researchers inductively line-by-line coded 10 articles  
179 each and a third researcher independently second coded 50% of these. Codes were then  
180 compared and discussed between researchers until an initial set of codes was developed.  
181 The remaining articles were then divided between the three researchers for coding. New  
182 codes were added as necessary. In stage 2, an initial thematic framework was developed.  
183 Through discussion, a team of five researchers explored similarities and differences between  
184 the codes, and individual codes were split or merged as necessary. This team comprised  
185 academic and lived experience researchers. Codes were then grouped and arranged into a  
186 hierarchy to create a framework of descriptive themes. This was an iterative process  
187 involving meetings and discussion by email, and checking the framework against the original  
188 data. In the third stage, analytic themes were generated, and the framework was finalised by  
189 the research team. Towards the end of this process, the analysis was discussed with the  
190 project working group to guide interpretation of the final results. The working group was  
191 made up of 29 members with academic, lived experience, and clinical backgrounds.

192

193

## 194 Results

195 We identified 47 eligible papers (Fig 1), which reported data from 44 studies and  
196 included 1,531 service users. 28 papers reported data from people diagnosed with  
197 "Borderline Personality Disorder", 12 from a sample of people with mixed "personality  
198 disorder" diagnoses, four from mixed samples of people either with a diagnosis of a  
199 "personality disorder" or who self-identified with the diagnosis, two from service users of a  
200 specialist service for "personality disorders" but did not otherwise report diagnostic or  
201 symptom information, and one from people with a history of repeated self-harm. 19 papers  
202 reported data on service user experiences of generic mental health services or of mental  
203 health care overall, 15 of specialist CEN services, 10 of specific psychotherapies, and three  
204 of independent or third sector services. Settings were the United Kingdom (n=28), elsewhere  
205 in Europe (n=8), Australia (n=5), the United States (n=3), and the rest of the world (n=3). A  
206 summary of the included studies can be found in Table 1.

### 207 Fig 1. PRISMA diagram

### 208 Table 1. Study characteristics

209 Overall, the included papers reported adequate detail for many of the topics covered  
210 by the CASP quality appraisal tool (Table 2). All included a clear statement of the aims of the  
211 research, an appropriate qualitative methodology, an appropriate recruitment strategy, and a  
212 clear statement of findings. However, a minority of papers did not include any or not enough  
213 information to determine whether the research design (n=5), data collection method (n=1), or  
214 the analysis method (n=2) were appropriate to the study aims. Finally, a substantial number  
215 of papers (n=14) did not adequately take ethical issues into consideration, while most (n=27)  
216 failed to explore the relationship between researchers and participants adequately.

### 217 Table 2. Quality assessment of the studies according to the Critical Appraisal Skills 218 Programme

219 The included studies covered a range of contexts, sample populations, and  
220 approaches to data collection and analysis. The main over-arching themes from this  
221 literature are described below. But given its complexities, a fuller report is contained in the  
222 supplementary materials. Clear differences were identified between different types of setting  
223 and levels of care (e.g. specialist versus generic and primary care), as well as between  
224 clinician groups (e.g. General Practitioners versus clinicians in specialist care). However, we  
225 were unable to identify obvious between-country differences; this is likely to be at least in  
226 part because most included studies were conducted in the UK, with other countries  
227 represented by relatively few papers. Quotes representative of themes are presented in  
228 Table 3.

### 229 **Table 3. Table of Quotes**

#### 230 **1. The need for a long-term perspective on treatment journeys**

231 Many studies emphasised the need for a long-term perspective on treatment,  
232 supporting gradual improvement over several or many years. Service users tended to report  
233 that, although treatment benefits could accrue over time, difficulties in managing emotions  
234 and in relationships and daily living also fluctuated, so that progress made was rarely linear.

#### 235 **Gradual change in awareness of and response to emotions**

236 Service users reported gradual improvements in emotional regulation as they gained  
237 awareness of emotions underpinning behaviours such as self-harm, resulting in a growing  
238 sense of control over these behaviours. Intensely experienced emotions included anger,  
239 sadness, anxiety, fear, hopelessness and emptiness. Recognising these emotions and being  
240 able to respond to them in different ways was described as an important component of  
241 recovery. Many pathways to change were described, including psychotherapy, art therapy  
242 and life story work. Some service users described a “light bulb” [47] moment when  
243 identifying triggers for self-harm following repeated behavioural analysis, helping the  
244 adoption of different coping strategies.

245 Service users described the skills learnt in treatment slowly becoming ‘second  
246 nature’ through small incremental steps. However, there were also many accounts of  
247 setbacks, with overwhelming emotions a barrier to effective use of newly learned coping  
248 strategies. There were accounts of a process of “personalisation”, with individuals identifying  
249 the strategies that work best for them to control emotions and function effectively in day-to-  
250 day interactions.

### 251 **Gradual improvements in relationships**

252 A further benefit described in several studies as accruing over time was in  
253 relationships with others, as treatment enhanced realistic understanding of others’ behaviour  
254 and feelings. Treatment could support service users to make more balanced assessments of  
255 others’ behaviour, and to be more mindful of how their own behaviour may be experienced  
256 by others. Good therapeutic alliances were described as promoting positive changes in  
257 relationships, as were relationships with peers in services, allowing communication skills to  
258 be practiced and refined. Accounts were given of relationships with friends and family  
259 gradually becoming stronger alongside good quality care.

### 260 **Recovery**

261 Service users in many studies reported mixed feelings about the idea of recovery. A  
262 widely reported view was that a realistic recovery goal wasn’t the absence of difficulties, but  
263 rather an improved ability to cope with them, or a reduction in their negative impacts on their  
264 lives. A pattern of periods of improvement interspersed with setbacks was often described.  
265 Clinicians were often perceived as having expectations of relatively swift recovery that were  
266 at odds with service use experiences regarding the pace and consistency of change.

## 267 **2. The need for individualised and holistic care**

268 Service users in many studies emphasised the importance of individualised care and  
269 of availability of different types of help, rather than clinicians adopting a one-size-fits-all  
270 approach. This was reported to be a problem when clinicians focused too much on diagnosis  
271 or relied too heavily on delivering recommended and highly standardised therapies, such as  
272 DBT. The importance of taking a holistic view of needs, and of focusing on personal goals

273 and aspirations was recurrently reported. In some cases, service users reportedly felt that  
274 therapies which were the main treatments offered did not address past traumas or the  
275 problems they were struggling with in their daily lives, and instead focused almost  
276 exclusively on specific topics such as self-harm or relationships. This could leave service  
277 users frustrated that they could not address other issues that were equally or more important  
278 to them, or that help in managing the social difficulties and the challenges of everyday life  
279 was unavailable. It was also important to service users that therapy helped them adapt skills  
280 learnt in treatment to their own personal situations.

### 281 **Need for positive approaches to care**

282 Another recurrently reported facet of good quality care was that it should be informed  
283 by an acknowledgement that service users often face very daunting psychological  
284 impediments to engaging with treatment. Overwhelming emotions were frequently identified  
285 as a barrier to using strategies learnt in treatment, and there were accounts of such  
286 emotions being triggered by therapy sessions. This could discourage further attendance at  
287 therapy sessions, even when service users felt it important to explore and process adverse  
288 experiences. Therapies that were primarily focused on self-harm were viewed ambivalently  
289 by some; self-harm was often seen as a coping strategy for dealing with unbearable  
290 emotional pain and distress, and could thus sometimes be experienced as life-saving rather  
291 than life-threatening. Positive approaches that were aimed at developing alternative coping  
292 strategies rather than eliminating self-harm were often preferred. There were reports of  
293 boundaries and consequences for self-harm can be helpful, but it was emphasised that such  
294 restrictions should be within a context of compassion and understanding, along with  
295 continued access to warmth and comfort from clinicians.

### 296 **Medications**

297 Whilst both psychological and social interventions were valued, papers tended to  
298 describe more ambivalent views about medication. There were accounts of service users  
299 feeling they were used as “guinea pigs” [62] and trialled on numerous medications because  
300 staff did not know how to treat them. This was reported in both specialist and generic

301 settings. Some reported being told to take new medications without any information about  
302 the rationale for this. Some papers reported service users' views medication was over-  
303 emphasised in treating CEN rather than offering psychotherapy or other treatments.  
304 Specialist services, however, were described in many papers as approaching things  
305 differently, with choices offered regarding medication use, rather than it being presented as  
306 the mainstay of treatment. Involvement in treatment decisions allowed service users some  
307 power to decide on their own recovery pathway, which varied between individuals.

### 308 3. Large variations in accessibility and quality of mental health services

309 Many of the included papers focused on specialist "personality disorder" services,  
310 and many positive experiences were described of these. Services were recurrently reported  
311 to be most helpful when they were accessible and easy to understand, when staff were  
312 knowledgeable and warm, where service users were involved in their own care, such as their  
313 Care Plan Approach meetings, and where they had good access to high quality services that  
314 could offer treatment options well suited to their needs. However, there were also many  
315 accounts of complicated journeys through services and of large variations in access to and  
316 quality of care, with accounts of good care from generic mental health services being much  
317 less common.

#### 318 Access to services

319 Consistent and easy access to high quality care was highly valued but rarely reported  
320 in the included studies. Gaps in treatment pathways and exclusion from a variety of mental  
321 health services on grounds of "personality disorder" diagnosis were prominent in many of the  
322 papers that discussed the mental healthcare system beyond specialist "personality disorder"  
323 services. For many, mental health services were confusing and difficult to navigate. There  
324 were accounts of service users having to learn independently what services and treatments  
325 were available, while advocating for themselves and others as they navigated the system.  
326 Meanwhile, other service users said that they were not aware of the types of services  
327 available to them as staff had failed to signpost them.

328           A few papers took an overview of service provision and described large variations  
329 between areas and resource limitations. Identified barriers to access included difficulties in  
330 reaching services, particularly in rural areas or where specialist services covered large  
331 areas, poor physical facilities, high costs of specialist treatment where available, rigid  
332 inclusion/exclusion criteria, and treatment delivered mainly available through private  
333 healthcare. Temporal aspects of treatment were also important. Service users often found  
334 that starting at a new service was challenging. They experienced long wait times, found that  
335 the entry assessments were emotionally demanding, and did not understand what the  
336 service would provide. Thus, for many, the long treatment journey appeared to involve  
337 periods of reasonably good care interspersed with other periods of lacking access to any  
338 services or confusion about which pathways and services are available to them.

### 339 **Quality of services**

340           There were accounts of service users receiving no explanations at all of the roles of  
341 the individuals they were seeing or of the purpose of their contact with them. Care was  
342 described that consisted of a series of rushed outpatient appointments, with service users  
343 feeling entirely excluded from important aspects of decision-making about their care. A lack  
344 of knowledgeable, engaged staff resulted in some service users feeling let down and  
345 rejected by services, especially if they did not respond to typical treatment strategies.  
346 Consequently, some service users reported looking for alternative sources of support, such  
347 as online resources, which could at times cause more harm than good, or result in greater  
348 use of problematic coping strategies.

### 349 **The role of specialist services**

350           Across the papers, quality of treatment, staff attitudes and service user involvement  
351 and choice tended to be viewed as substantially better in specialist 'personality disorder'  
352 than in generic mental health services. However, specialist services were also less  
353 accessible. Furthermore, service users reported they often lacked a clear explanation of  
354 what specialist services would offer them and their input was frequently time-limited, whether  
355 because of limits imposed on the number of treatment sessions or time in the service, or



356 through termination of treatment because ‘rules’ had not been adhered to: this is not in  
357 keeping with the long recovery journey discussed above.

#### 358 **Continuity of care**

359 Lack of continuity of care was a key issue in many papers, particularly after  
360 discharge from specialist services or when key staff stopped working with a service user.  
361 Service users described needing support to maintain progress, but that relatively little help  
362 was available after the end of intensive periods of therapy. The endings of treatments could  
363 be particularly difficult for service users who were highly aware of the time limits of their  
364 service and often felt that they were too short, both in terms of length and quantity of therapy  
365 sessions. Discharge from a service could feel abrupt and result in a sudden drastic  
366 reduction in support available.

#### 367 **4. The centrality of therapeutic relationships**

368 Good client-clinician relationships were described in many sources as being at the  
369 centre of good care. Positive qualities for clinicians included being warm, trustworthy,  
370 honest, open, accepting, non-judgemental, and interested in their job and in the service user  
371 as a person. It was important to service users that they felt supported, valued, understood,  
372 listened to, and cared about. Where this was absent, service users felt that they could not be  
373 honest with their clinician, that the clinician would be unable to help them, or that their  
374 treatment would be poorly tailored to their needs. Positive qualities were described in many  
375 papers as being more frequent among clinicians working in specialist services, potentially as  
376 a result of good training and understanding of CEN.

377 Problematic qualities for clinicians included being poorly informed, misinformed, or  
378 perpetuating stigmatising attitudes and therapeutic nihilism (an inappropriately pessimistic  
379 view regarding the potential benefits of treatment) [70] about CEN. Some sources identified  
380 underlying problems as lack of training in working with people with CEN, poor empathy, and  
381 understanding, or a perception of people with CEN as “difficult”. There were accounts of  
382 clinicians who seemed uninterested in people with CEN, who rushed through their

383 appointments, or were dismissive, unsympathetic, or insensitive. Other negative  
384 characteristics included being overly strict, authoritarian, critical, superior, cold, or aloof.  
385 Sources often identified such experiences as most frequent in primary care, psychiatric  
386 outpatient settings or generic secondary mental health teams. When severe, service users  
387 described these experiences as traumatising. Further difficulties reported in generic settings  
388 included a lack of consistent relationships with the same professionals and a sense that  
389 clinicians had no clear therapeutic plans.

### 390 Relationship dynamics and involvement

391 Encouragement to set and work towards goals was described as important. There  
392 were accounts of service users wanting to be challenged by their clinician and pushed to  
393 progress in treatment, for example their treatment, such as to stop self-harming. But it was  
394 also important that clinicians understood the capabilities and limits of the service user as well  
395 as the severity of their distress: and did not pushing too hard, which could be experienced as  
396 distressing, traumatic, or damaging. Thus, clinicians needed to achieve a careful balance,  
397 while also being sure to adapt to the changing needs of service users over time. Specialist  
398 skills, training and experience were seen as helpful to managing this balance. There were  
399 multiple accounts of service users valuing a framework for treatment in both individual and  
400 group contexts in which boundaries were straightforward and clear, but not too strict or  
401 judgmental. Exclusion or discharge from services to enforce rules was viewed as punitive  
402 and could lead to feelings of rejection and abandonment and, consequently, to a  
403 deterioration in mental state.

404 Ending a therapeutic relationship due to a change in clinical staff or the service user  
405 being transferred between or discharged from services, could also leave service users  
406 feeling abandoned or rejected. Service users advocated gradual change in their support  
407 teams, with careful and planned handovers. Lack of choice of clinicians was also a recurring  
408 theme, with some people feeling they were allocated to clinicians with whom they found it  
409 difficult to establish strong relationships, or whom they felt to have negative attitudes,

410 especially in generic services. Having a voice in care planning meetings was also identified  
411 in several studies as important for good quality care. The value of peer support

#### 412 Family and friends

413 Service users considered service engagement with family and other key supporters  
414 another important aspect of support, since interpersonal relationships can provide emotional  
415 and practical support for service users to manage emotions and symptoms. Several sources  
416 described this as supporting recovery by allowing relatives to better understand CEN their  
417 needs and by improving communication and trust. Even in specialist settings, there were  
418 accounts of service users reporting that there was little provision of support (including mutual  
419 support as in carers' groups) and psychoeducation for carers.

#### 420 Peer support

421 Peer relationships were identified in many papers as valuable for recovery, both in  
422 therapeutic groups and in more informal settings. Their value included fostering a sense of  
423 belonging and relieving loneliness. Service users could share experiences and support one  
424 another, for example when managing symptoms such as self-harm. However, service users  
425 accounts of peer support were limited to those provided as part of clinician-led group  
426 treatment, and did not include descriptions of services employing peer support workers with  
427 experience of CEN or establishing peer support schemes of any time.

#### 428 Group treatment

429 Positive experiences of group treatment were often described, especially due to the  
430 feelings of belonging and acceptance that could be fostered. A challenging aspect,  
431 however, was achieving a balance between the giving and receiving of support, and  
432 providing clear structures for doing so. Service users could feel sometimes overwhelmed  
433 by the needs of others, or that their own needs had not been met, and good structure for  
434 managing this were appreciated. For example, some papers described allocating of time to  
435 each participant in a group as a helpful means of facilitating sharing and ensuring everyone  
436 can contribute. Although service users appreciated groups in which members were  
437 encouraged to talk openly, groups could also be emotionally draining at times, for example

438 when topics such as self-harm and suicide were discussed. A challenge was to establish  
439 what could be brought to the group and fostering a culture of safety, whilst avoiding the  
440 potentially limiting and frustrating effects of unduly strict rules and boundaries. For example,  
441 there were accounts of service users not feeling comfortable with revealing self-harm  
442 because of the potential repercussions for doing so. Furthermore, problematic (including  
443 aggressive) within-group relationships between participants could at times emerge, leaving  
444 some service users feeling excluded by the group or choosing to exclude themselves. It was  
445 important for group leaders to carefully monitor group dynamics and intervene as needed.

#### 446 5. Impacts of "Personality Disorder" diagnosis

447 Whilst our main aim was to understand service user views on what constitutes good  
448 care, many papers also included discussions of the pros and cons of receiving a diagnosis of  
449 "personality disorder", including its impacts on the care they received from services.  
450 Negative consequences appeared especially prominent outside specialist "personality  
451 disorder" services. These included being excluded from services and treatments because of  
452 the diagnosis and being met with stigmatising or stereotypical attitudes amongst clinicians  
453 and society. There were reports that once labelled in this way, service users were no longer  
454 seen as unwell or distressed but as "difficult", and that some symptoms that they  
455 experienced, including psychotic symptoms, were no longer considered genuine. For some,  
456 the contested and uncertain nature of the diagnosis made it more difficult to feel in control of  
457 their condition because there were so many myths, misinformation, and derogatory attitudes,  
458 including amongst their clinicians. Such views include that "personality disorders" are  
459 untreatable, that self-harming and other behaviours are merely manipulations to gain  
460 attention, and that service users with the diagnosis are liars, attention-seeking, unreasonable  
461 or difficult, manipulative, and take resources from other patients. Such attitudes only  
462 compounded service users' feelings of isolation, marginalisation, abandonment, or rejection.  
463 Others felt the diagnosis pathologised the impacts of the abuses they had experienced  
464 throughout their lives, resulting further trauma and a sense of victimhood.

465           However, some positive effects on mental health care associated with a receiving a  
466 diagnosis of “personality disorder” were also described, especially regarding access to  
467 treatment and improved self-understanding. Some papers described service users finding  
468 that the diagnosis helped them to reflect on their own feelings and responses, and to engage  
469 in treatment. This was especially true if the diagnosis seemed to fit their experiences, and if  
470 it was contextualised with helpful information about the condition and treatment options.  
471 Where it was accompanied by access to potential helpful therapy, there were reports of the  
472 diagnosis offering a sense of validation and relief.

473           How service users were told about their diagnosis seemed to influence how they  
474 subsequently felt about it. Being given the diagnosis by a clinician who understood the  
475 condition, who had time for discussion, and who was optimistic about the effectiveness of  
476 treatment and the likelihood of recovery was more likely to result in a positive experience.  
477 Attempts by clinicians to avoid or sidestep a diagnosis of "personality disorder" were seen as  
478 counterproductive by some, inadvertently indicating clinicians’ negative attitudes about the  
479 condition and, possibly, invalidating service users’ hopes and understanding of themselves.

480

## 481 Discussion

### 482 Main findings and implications

483 We found a substantial literature (47 papers) published since 2003, from which a  
484 generally consistent set of themes regarding experiences of care emerged. Some overall  
485 points regarding implications for achieving good practice can be drawn based on these.  
486 Firstly, reports of good practice and helpful treatment, as far as available, seemed to be  
487 largely confined to periods of care by specialist services. However, specialist care was often  
488 hard to access and time-limited in a way that does not fit with the long journey towards  
489 “recovery” described by service users with CEN. Service user accounts across many papers  
490 suggest that care pathways are needed that take into account the long timescales involved  
491 in living with CEN, and the many set-backs often experienced. Holistic support from  
492 empathetic professionals with a good understanding of CEN is needed even during periods  
493 when service users are not engaged in intensive therapies. Transitions between stages of  
494 care need to be smooth and well-understood by all. In the care of conditions such as  
495 psychosis and bipolar, models such as early intervention and assertive outreach services  
496 and recovery teams have been developed to meet a range of service user needs over a long  
497 timescale. Development and implementation of such models for people with CEN has been  
498 much more limited even though this group likewise have long-term and fluctuating needs in  
499 many areas of their lives.

500 Secondly, good relationships and skilled support from clinicians who convey hope  
501 regarding long—term improvement in CEN are seen as central throughout pathways through  
502 the mental health care system. Service users tend to value highly clinicians who have the  
503 right skills to create safe spaces in individual and group treatment and manage exploration  
504 of challenging topics such as self-harm and trauma. Across the included studies, clinicians  
505 with the necessary skills and values seemed to be mainly found in specialist services, with at  
506 times appalling descriptions of lack of understanding and hopefulness, and stigmatising  
507 attitudes and behaviour elsewhere in primary and secondary mental health care. Addressing  
508 this appears central to achieving good practice, whether by designing pathways so that

509 people with CEN normally receive care throughout from people with some specialist  
510 understanding of their condition, and/or by large-scale programmes to improve attitudes  
511 towards and understanding of CEN across the healthcare system. Stepped care models, in  
512 which some service users receive CEN interventions within generic services, are often  
513 advocated as a way of meeting needs of people with CEN across the care system. The  
514 success of such models is likely to require attitudes to CEN in generic services to be much  
515 more positive than has tended to be described in the current review.<sup>71</sup> Given the centrality  
516 of therapeutic relationships in recovery, service users also often advocated for a choice of  
517 therapist, but this seemed to be offered relatively rarely. Peer support appears, from the  
518 studies, reviewed to be an area with considerable scope for innovation: the mutual  
519 acceptance and understanding and sense of belonging available from peers is experienced  
520 as very helpful and validating, especially as loneliness appears to be a core difficulty in CEN.  
521 There were few accounts of harnessing this potential beyond therapeutic groups, although it  
522 seems to be a significant potential component of good practice [72].

523 Thirdly, as with other longer-term mental health conditions, care needs to meet a  
524 range of psychological, social and physical needs. Yet, service users reported that support  
525 from specialist services often focused mostly on self-harm and emotional regulation, with  
526 people who did not feel ready to focus on these issues or who had other care priorities  
527 sometimes excluded from care. Thus, we suggest that achieving good practice should  
528 involve designing holistic services that offer not only specific therapies (which are often  
529 highly structured and focused) but also support people with social and practical difficulties,  
530 looking after physical health, managing substance use, and with managing relationships and  
531 reducing loneliness.

532 Finally, being given a “personality disorder” diagnosis can have profound effects on  
533 all aspects of service users’ experiences with mental health care services. On the one hand,  
534 the diagnosis was sometimes described as helpful in contextualizing distressing symptoms,  
535 especially if it was communicated in a sensitive manner, and could allow service users

536 access to specialist care. However, it was also clear that stigmatising attitudes held by  
537 clinicians could be detrimental to a service user's sense of self-worth and ultimately impede  
538 their recovery. Such stigma was most common in generic mental health services and  
539 primary care, and could lead to pessimism amongst clinicians about the prospects of  
540 recovery and consequently to service users being denied access to care and treatment.  
541 These findings indicate a need for improved training for clinicians outside specialist  
542 'personality disorder' services.

543 Throughout the included studies, there appeared to be frequent mismatch between  
544 service users' clear assessments of their needs for long-term engagement with holistic care  
545 delivered by empathetic clinicians with a realistic but hopeful understanding of CEN, and the  
546 service contacts they experienced. This reinforces the need to include people with lived  
547 experience of CEN and of using services, as well as their families and friends, in the  
548 development and assessment of services and care pathways. The perspectives of clinicians,  
549 investigated in an accompanying review [73], as well as those of family and friends, also  
550 need to be understood to ensure plans to improve care are feasible, and to develop  
551 approaches to reducing stigma and improving understanding and attitudes. Furthermore, we  
552 note also that trials of therapeutic interventions to date have tended to focus on testing  
553 effects of specific therapies over relatively short durations [74]. The results of this study  
554 make clear that service user views of good practice tend more to focus on access to a broad  
555 and individualised treatment that lasts over the long term.

## 556 Limitations

557 The process of concisely synthesising findings across many qualitative studies from  
558 different dates and countries inevitably leads to some loss of nuance and simplification of  
559 findings, while allowing cross-validation between studies regarding themes that are recurrent  
560 in different populations. There was considerable heterogeneity regarding participant  
561 characteristics, treatment type, and methods, but neither the reporting of data in most papers  
562 nor our approach of looking for commonalities between papers allowed us to identify



563 differences by groups. Papers varied in inclusion criteria, with some samples primarily of  
564 people with “emotionally unstable” or “borderline personality disorder” diagnosis, others of  
565 mixed samples. However, even the latter seemed primarily focused on the difficulties of  
566 emotional regulation and impulsive behaviour that may lead to a “borderline personality  
567 disorder” diagnosis. Generalisability to their experiences of people with other “personality  
568 disorder” diagnoses is thus limited.

569 To exclude papers written regarding service systems very different from current  
570 ones, we only identified papers written since 2003, the year “Personality Disorder: No  
571 Longer A Diagnosis Of Exclusion” was published [6], so that potentially important  
572 experiences before that date will have been missed. Although eligible for inclusion, we did  
573 not find papers written in languages other than English. Most of the papers were from the  
574 UK, so that our results, as well as the perspective of the authors, may result in a  
575 disproportionate focus on the UK. However, we found that similar experiences tended to be  
576 reported in the various included countries as well as across the timespan of our study.

577 Participants in the included studies were mainly people who were to some extent  
578 engaged with services. Thus, the experiences of potentially the most dissatisfied and  
579 underserved group, people who are not engaged with any kind of care, are likely to be  
580 under-represented.

### 581 [Lived Experience Commentaries](#)

582 The importance of providing individualised and holistic care instead of a “one-size-  
583 fits-all” approach in community services for people with CEN cannot be emphasised enough.  
584 We are not defined by a “Personality Disorder” label, but should be respected and treated as  
585 the unique human beings that we are.

586 It is evident that the stigma of the diagnosis is still insidious - especially amongst staff  
587 in generic community mental health services. This is extremely disappointing to see 17 years  
588 after “Personality Disorders” were officially declared “No Longer a Diagnosis of Exclusion”,  
589 which may be indicative of a culture resistant to change.

590 Unfortunately, it strongly resonates with some of our own lived experience that  
591 having to work with clinicians outside specialist services who demonstrate no real  
592 understanding of or empathy and respect for people with CEN often does more (iatrogenic)  
593 harm than good. In fact, hardly anything could be more re-traumatising than blatant  
594 ‘malignant alienation’, [75] which in any other context would be considered unthinkable.

595 In order to tackle such entrenched attitudes, we need a culture shift across  
596 community services. Mandatory CEN-specific training for clinicians should be co-produced  
597 with service users and embed helpful features of specialist services as well as trauma-  
598 informed care. However, any learning can only be successfully implemented in practice if it  
599 is consistently reinforced through role-modelling.

600 Overall, this meta-synthesis highlights a desperate need for change in order to  
601 provide the right care at the right time in more inclusive mental health services for people  
602 with CEN. Parity of esteem between services for CEN and other SMIs - where pathways are  
603 much better established and the importance of long-term support is widely recognised – is  
604 long overdue. Ultimately, we cannot afford to waste another 17 years without genuine  
605 progress towards treating people with CEN with the dignity and respect that they deserve.

606 Eva Broeckelmann and Jessica Russell

607 Two decades of research tell us that interventions need to float an individual's boat.  
608 The boats are ideally equipped for a long voyage, sail at their own pace, choose their  
609 destination and have kind, skilled staff on board.

610 This isn't big, clever or new. New research concurs with research written two  
611 decades ago. Why aren't we fixing those boats?

612 Evaluations demonstrated a positive change in negative attitudes and stigma  
613 amongst staff after attending co-designed and co-delivered KUF (Knowledge &  
614 Understanding Framework) training. Funding has since been cut.

615 Survivor led organisation Emergence CIC developed innovative ways of working that  
616 were co-delivered or led by survivors. The lack of inclusion of co-produced work within the  
617 review demonstrates a missing literature base. Survivor knowledge has been decimated  
618 alongside funding cuts.

619 The question isn't about what to do, or how to do it. The question is why aren't we?

620 Why keep sabotaging the boats we already know we need?

621 Tamar Jeynes

## 622 Acknowledgments

623 This report is based on independent research commissioned and funded by the  
624 National Institute for Health Research Policy Research Programme. The views expressed  
625 are those of the author(s) and not necessarily those of the NHS, the National Institute for  
626 Health Research, the Department of Health and Social Care or its arm's length bodies, and  
627 other Government Departments.

628

## 629 Contributions

630 Conceptualization: Sonia Johnson, Sian Oram, Chris Cooper

631 Data curation: Chris Cooper, Luke Sheridan Rains, Athena Echave, Thomas Steare.

632 Formal analysis: Luke Sheridan Rains, Jessica Rees, Hannah Rachel Scott, Eva  
633 Broeckelmann, Billie Lever-Taylor, Sarah Rowe.

634 Methodology: Sonia Johnson, Sian Oram, Chris Cooper, Luke Sheridan Rains, Athena  
635 Echave, Sarah Rowe

636 Supervision: Luke Sheridan Rains, Sian Oram, Sonia Johnson.

637 Writing – original draft: Luke Sheridan Rains, Sonia Johnson, Phoebe Barnett, Eva  
638 Broeckelmann, Jessica Rees, Hannah Rachel Scott, Tamar Jeynes, Jessica Russell

639 Writing – review & editing: Luke Sheridan Rains, Athena Echave, Jessica Rees, Hannah  
640 Rachel Scott, Eva Broeckelmann, Tamar Jeynes, Jessica Russell, Billie Lever-Taylor,  
641 Thomas Steare, Phoebe Barnett, Chris Cooper, Sian Oram, Sarah Rowe, Sonia Johnson

## 642 Funding

643 This paper presents independent research commissioned and funded by the National  
644 Institute for Health Research (NIHR) Policy Research Programme, conducted by the NIHR  
645 Policy Research Unit (PRU) in Mental Health. The views expressed are those of the authors  
646 and not necessarily those of the NIHR, the Department of Health and Social Care or its  
647 arm's length bodies, or other government departments.



## 649 References

- 650 1. Beckwith H, Moran PF, Reilly J. Personality disorder prevalence in psychiatric  
651 outpatients: A systematic literature review. *Personal Ment Health*. 2014; 8(2): 91-101.
- 652 2. Dale O, Sethi F, Stanton C, Evans S, Barnicot K, Sedgwick R, et al. Personality  
653 disorder services in England: findings from a national survey. *BJPsych Bull*. 2017;41(5):247-  
654 53.
- 655 3. 2. Evans S, Sethi F, Dale O, Stanton C, Sedgwick R, Doran M et al. Personality  
656 disorder service provision: a review of the recent literature. *Mental Health Review Journal*.  
657 2017;22(2):65-82.
- 658 4. 1. Campbell K, Clarke K, Massey D, Lakeman R. Borderline Personality Disorder: To  
659 diagnose or not to diagnose? That is the question. *International Journal of Mental Health*  
660 *Nursing*. 2020;29(5):972-981.
- 661 5. Ring D, Lawn S. Stigma perpetuation at the interface of mental health care: a review  
662 to compare patient and clinician perspectives of stigma and borderline personality disorder. *J*  
663 *Ment Health*. 2019 Mar 12: 1-21. Epub 2019 Mar 12.
- 664 6. National Institute of Mental Health. Personality disorder: No longer a diagnosis of  
665 exclusion. London: Department of Health; 2003 Jan. 54 p.
- 666 7. NHS England. NHS Mental Health Implementation Plan 2019/20 – 2023/24. England:  
667 NHS England; 2019 Jan. 57 p.
- 668 8. Jarret C. Understanding personality disorder. *The Psychologist*. 2006; 19(7): 402-  
669 404.
- 670 9. Royal College of Psychiatrists PS01/20: Services for people diagnosable with  
671 personality disorder. 2020. Available from: [https://www.rcpsych.ac.uk/docs/default-](https://www.rcpsych.ac.uk/docs/default-source/improving-care/better-mh-policy/position-statements/ps01_20.pdf?sfvrsn=85af7fbc_2)  
672 [source/improving-care/better-mh-policy/position-statements/ps01\\_20.pdf?sfvrsn=85af7fbc\\_2](https://www.rcpsych.ac.uk/docs/default-source/improving-care/better-mh-policy/position-statements/ps01_20.pdf?sfvrsn=85af7fbc_2)  
673 (accessed 28 October 2020).

- 674 10. Crawford MJ, Price K, Rutter D, Moran P, Tyrer P, Bateman A, et al. Dedicated  
675 community-based services for adults with personality disorder: Delphi study. *Br J Psychiatry*.  
676 2008; 193(4): 342-343.
- 677 11. Katsakou C, Pistrang N. Clients' experiences of treatment and recovery in borderline  
678 personality disorder: A meta-synthesis of qualitative studies. *Psychotherapy Research*.  
679 2018; 28(6): 940-957.
- 680 12. Lamont E, Dickens GL. Mental health services, care provision, and professional  
681 support for people diagnosed with borderline personality disorder: systematic review of  
682 service-user, family, and carer perspectives. *J Ment Health*. 2019 May 17; 1-15. Epub 2019  
683 May 13.
- 684 13. SJ Recovery in the Bin. RITB Position Statement On Borderline Personality Disorder.  
685 2019 Available from: [https://recoveryinthebin.org/2019/04/03/ritb-position-statement-on-](https://recoveryinthebin.org/2019/04/03/ritb-position-statement-on-borderline-personality-disorder/)  
686 [borderline-personality-disorder/](https://recoveryinthebin.org/2019/04/03/ritb-position-statement-on-borderline-personality-disorder/)
- 687 14. SJ Campbell K, Clarke K, Massey D, Lakeman R. Borderline Personality Disorder:  
688 To diagnose or not to diagnose? That is the question. *Int J Ment Health Nurs*. 2020 May 19;  
689 29(5): 972-981.
- 690 15. SJ Lester R, Prescott L, McCormack M, Sampson M. Service users' experiences of  
691 receiving a diagnosis of borderline personality disorder: A systematic review. *Personal Ment*  
692 *Health*. 2020 Feb 19; 14(3): 263-283.
- 693 16. Centre of Reviews and Disseminations. *Systematic Reviews: CRD's guidance for*  
694 *undertaking reviews in health care*. York: Centre of Reviews and Disseminations, University  
695 of York; 2009 Jan. 281 p.
- 696 17. Moher D, Liberati A, Tetzlaff J, Altman DG, The PRISMA Group. Preferred reporting  
697 items for systematic reviews and meta-analyses: the PRISMA statement. *PLoS Med*.  
698 2009;6(7):e1000097.

- 699 18. McGowan J, Sampson M, Salzwedel DM, Cogo E, Foerster V, Lefebvre C. PRESS  
700 Peer Review of Electronic Search Strategies: 2015 Guideline Statement. *J Clin Epidemiol.*  
701 2016; 75: 40-46.
- 702 19. Cooper C, Dawson S, Peters J, Varley-Campbell J, Cockcroft E, Hendon J, et al.  
703 Revisiting the need for a literature search narrative: A brief methodological note. *Res Synth*  
704 *Methods.* 2018; 9(3): 361-365.
- 705 20. Clarivate Analytics. Endnote X9. Available from: <https://endnote.com/>
- 706 21. Critical Appraisal Skills Programme. CASP qualitative checklist. 2018. Available from:  
707 <https://casp-uk.net/wp-content/uploads/2018/01/CASP-Qualitative-Checklist-2018.pdf>
- 708 22. Thomas J, Harden A. Methods for the thematic synthesis of qualitative research in  
709 systematic reviews. *BMC Med Res Methodol.* 2008 Jul 10; 8: 45.
- 710 23. Barnicot K, Couldrey L, Sandhu S, Priebe S. Overcoming barriers to skills training in  
711 borderline personality disorder: A qualitative interview study. *PLoS ONE.* 2015 Oct 14;  
712 10(10): e0140635
- 713 24. Barr W, Hodge S, Kirkcaldy A. Evaluation of the day services run by agency  
714 partnerships and therapeutic community service north. Liverpool: Health and Community  
715 Care Research Unit, University of Liverpool, 2008. 166p.
- 716 25. Bradbury L. A qualitative exploration of the relationship between those with a  
717 diagnosis of Borderline Personality Disorder and their care coordinators: a service user  
718 perspective. Doctoral Thesis, University of Surrey. 2016. Available from:  
719 <https://core.ac.uk/display/76988193>
- 720 26. Carrotte E, Hartup M, Blanchard M. "It's very hard for me to say anything positive": A  
721 qualitative investigation into borderline personality disorder treatment experiences in the  
722 Australian context. *Aust Psychol.* 2019 May 02; 54(6): 526-535.



- 723 27. Castillo H, Ramon S, Morant N. A recovery journey for people with personality  
724 disorder. *Int J Soc Psychiatry*. 2013 Mar 12; 59(3): 264-273.
- 725 28. Chatfield J. Investigating client dropout from psychotherapeutic treatments for  
726 personality disorder. Doctoral Thesis, Canterbury Christ Church University. 2013. Available  
727 from:  
728 [https://repository.canterbury.ac.uk/download/73cf7d68af8225635cfd5266492b31f30302aa70](https://repository.canterbury.ac.uk/download/73cf7d68af8225635cfd5266492b31f30302aa707471a0848f023c60d16e2be2/1712935/Jon_Chatfield_MRP_2013.pdf)  
729 [7471a0848f023c60d16e2be2/1712935/Jon\\_Chatfield\\_MRP\\_2013.pdf](https://repository.canterbury.ac.uk/download/73cf7d68af8225635cfd5266492b31f30302aa707471a0848f023c60d16e2be2/1712935/Jon_Chatfield_MRP_2013.pdf)
- 730 29. Ciclitira K, Starr F, Payne N, Clarke L, Marzano. A sanctuary of tranquillity in a  
731 ruptured world: Evaluating longterm counselling at a women's community health centre. *Fem*  
732 *Psychol*. 2017 Jan 25; 27(4): 530–552.
- 733 30. Clarke JM. The case for “fluid” hierarchies in therapeutic communities. *Ther*  
734 *Communities*. 2017; 38(4): 207-216.
- 735 31. Clarke JM, Waring J. The transformative role of interaction rituals within therapeutic  
736 communities. *Sociology of Health & Illness*. 2018 Jun 29; 40(8): 1277–1293.
- 737 32. Crawford M, Rutter D, Price K, Weaver T, Josson M, Tyrer P, et al. Learning the  
738 lessons: a multimethod evaluation of dedicated community-based services for people with  
739 personality disorder. London: National Coordinating Centre for NHS Service Delivery and  
740 Organisation; 2007. 381 p.
- 741 33. Cunningham K, Wolbert R, Lillie B. It's About Me Solving My Problems: Clients'  
742 Assessments of Dialectical Behavior Therapy. *Cognitive and Behavioral Practice*. 2004;  
743 11(2): 248-256.
- 744 34. Donald F, Duff C, Broadbear J, Rao S, Lawrence K. Consumer perspectives on  
745 personal recovery and borderline personality disorder. *The Journal of Mental Health*  
746 *Training, Education and Practice*. 2017 Nov 06; 12(6): 350-359.

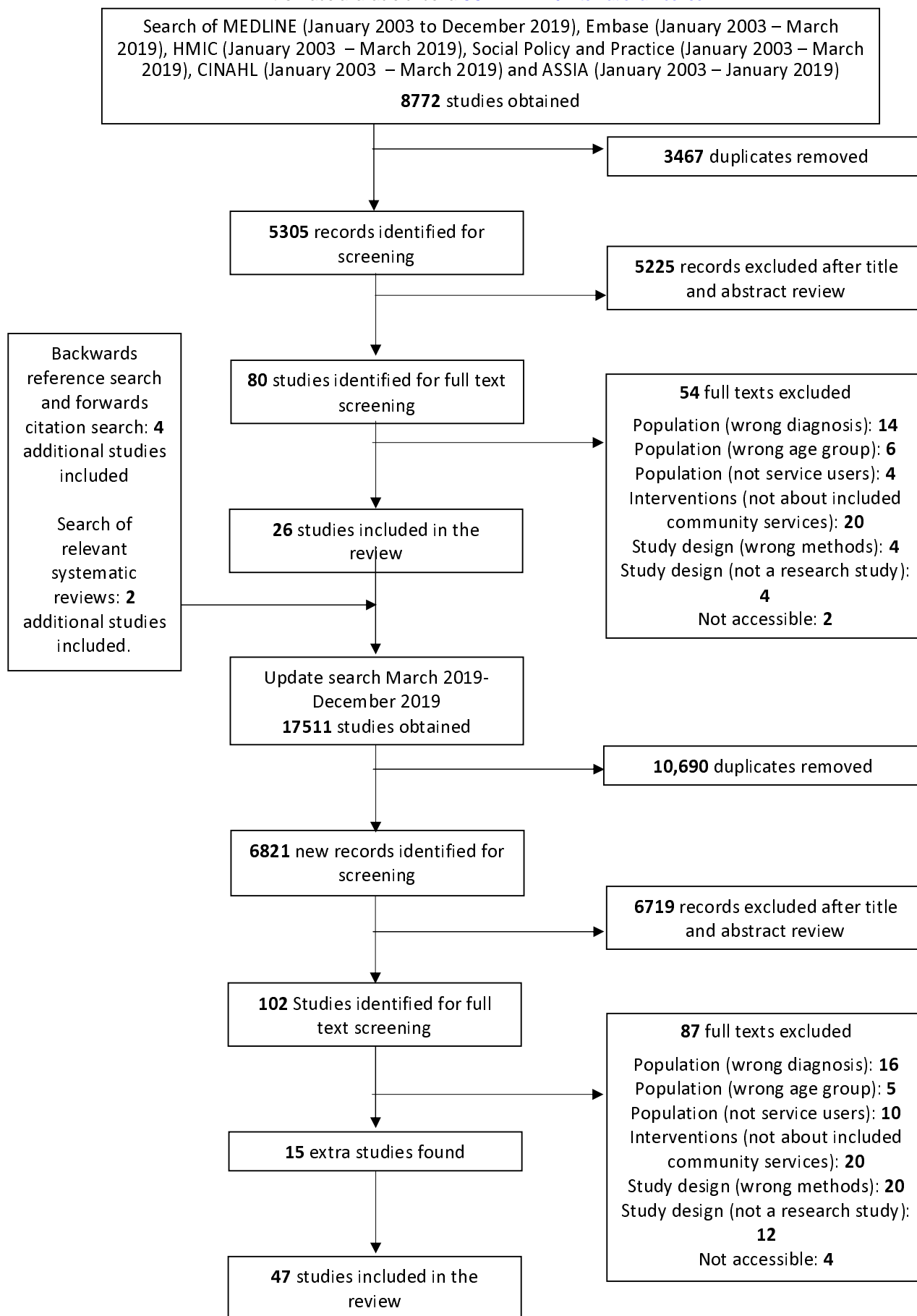
- 747 35. Falconer CJ, Cutting P, Davies EB, Hollis C, Stallard P, Moran P. Adjunctive avatar  
748 therapy for mentalization-based treatment of borderline personality disorder: a mixed-  
749 methods feasibility study. *Evidence Based Mental Health*. 2017 Oct 22; 20(4): 123-127.
- 750 36. Fallon P. Travelling through the system: the lived experience of people with  
751 borderline personality disorder in contact with psychiatric services. *J Psychiatr Ment Health  
752 Nurs*. 2003 Jul 21; 10(4): 393-401.
- 753 37. Flynn S, Raphael J, Graney J, Nyathi T, Williams A, Kapur N, et al. The personality  
754 disorder patient pathway: Service user and clinical perspectives. *Personality and Mental  
755 Health*. 2019 May 20; 13(3): : 134–143.
- 756 38. Folmo EJ, Karterud SW, Kongerslev MT, Kvarstein EH, Stänicke E. Battles of the  
757 Comfort Zone: Modelling Therapeutic Strategy, Alliance, and Epistemic Trust—A Qualitative  
758 Study of Mentalization-Based Therapy for Borderline Personality Disorder. *J Contemp  
759 Psychother*. 2019; 49(3): 141-151.
- 760 39. Gillard S, Turner K, Neffgen M. Understanding recovery in the context of lived  
761 experience of personality disorders: a collaborative, qualitative research study. *BMC  
762 Psychiatry*. 2015 Jul 31; 15(183): 1-13.
- 763 40. Gillard S, White R, Miller S, Turner K. Open access support groups for people  
764 experiencing personality disorders: Do group members' experiences reflect the theoretical  
765 foundations of the SUN project? *Psychology and Psychotherapy: Theory, Research and  
766 Practice*. 2015 Mar 01; 88(1): 87–104.
- 767 41. Goldstein SE. A narrative study of the relationships between women diagnosed with  
768 borderline personality disorder and their therapists. Doctoral Thesis, Fielding Graduate  
769 University. 2015. Available from: (FIND WEBSITE FOR ACCESS)
- 770 42. Haeyan S, Kleijberg M, Hinz, L. Art therapy for patients diagnosed with personality  
771 disorders cluster B/C: A thematic analysis of emotion regulation from patient and art  
772 therapist perspectives. *International Journal of Art Therapy*. 2018; 23(4): 156-168.

- 773 43. Helweg-Joergensen S, Schmidt T, Lichtenstein MB, Pederson SS. Using a Mobile  
774 Diary App in the Treatment of Borderline Personality Disorder: Mixed Methods Feasibility  
775 Study. *JMIR Form Res.* 2019 Sep 30; 3(3): e12852.
- 776 44. Hodgetts A, Wright J, Gough A. Clients with borderline personality disorder:  
777 Exploring their experiences of dialectical behaviour therapy. *Counselling and Psychotherapy*  
778 *Research.* 2007 Aug 10; 7(3): 172-177.
- 779 45. Hummelen B, Wilberg T, Karterud S. Interviews of Female Patients with Borderline  
780 Personality Disorder Who Dropped Out Of Group Psychotherapy. *International Journal of*  
781 *Group Psychotherapy.* 2007; 57(1): 67-92.
- 782 46. Katsakou C, Marougka S, Barnicot K, Savill M, White H, Lockwood K, et al. Recovery  
783 in Borderline Personality Disorder (BPD): A Qualitative Study of Service Users'  
784 Perspectives. *PLoS ONE.* 2012 May 17; 7(5): e36517.
- 785 47. Katsakou C, Pistrang N, Barnicot K, White H, Priebe S. Processes of recovery  
786 through routine or specialist treatment for borderline personality disorder (BPD): a qualitative  
787 study. *J Ment Health.* 2017; 28(6). Available from:  
788 <https://www.tandfonline.com/doi/full/10.1080/09638237.2017.1340631> - Conflicting  
789 Publication dates – Latest pub. Is 2019.
- 790 48. Larivière N, Couture E, Blackburn C, Carbonneau M, Lacombe C, Schinck S, et al.  
791 Recovery, as Experienced by Women with Borderline Personality Disorder. *The Psychiatric*  
792 *Quarterly.* 2015 Mar 04; 86(4): 555-568.
- 793 49. Leung M, Chow C, Ip PP, Yip SP. Self-harm attempters' perception of community  
794 services and its implication on service provision. *J Nurs Home Res Sci.* 2019 Jan 10; 6(1):  
795 50-57.
- 796 50. Lohamn MC, Whiteman KL, Yeomans FE, Cherico SA, Christ WR. Qualitative  
797 Analysis of Resources and Barriers for Borderline Personality Disorder in the U.S.  
798 *Psychiatric Services.* 2017 Feb 01; 68(2): 167-172.

- 799 51. Lonargain DO, Hodge S, Line R. Service User Experiences of MentalisationBased  
800 Treatment for Borderline Personality Disorder. *Mental Health Review Journal*. 2017 Mar 13;  
801 22(1): 16-27.
- 802 52. Long M, Manktelow R, Tracey A. "Knowing that I'm not alone": client perspectives on  
803 counselling for self-injury. *J Ment Health*. 2016; 25(1): 41-46.
- 804 53. McSherry P, O'Connor C, Hevey D, Gibbons P. Service user experience of adapted  
805 dialectical behaviour therapy in a community adult mental health setting. *J Ment Health*.  
806 2012; 21(6): 539-547.
- 807 54. Morant N, King J. A multi-perspective evaluation of a specialist outpatient service for  
808 people with personality disorders. *J Forens Psychiatry Psychol*. 2003; 14(1): 44-66.
- 809 55. Morris C, Smith I, Alwin N. Is contact with adult mental health services helpful for  
810 individuals with a diagnosable BPD? A study of service users views in the UK. *J Ment*  
811 *Health*. 2014 Sep 15; 23(5): 251-255.
- 812 56. Mortimer-Jones S, Morrison P, Munib A, Paolucci F, Neale S, Hellwell A, et al. Staff  
813 and client perspectives of the Open Borders programme for people with borderline  
814 personality disorder. *Int J Ment Health Nurs*. 2019 May 12; 28(4): 971-979.
- 815 57. Naismith I, Kerr S, Mwale A, Feigenbaum J. A thematic analysis of compassion-  
816 focused imagery for people with personality disorder: Inhibitors, facilitators and clinical  
817 recommendations. *Clinical Psychologist*. 2019 Jun 04; 23(3): 213-224
- 818 58. Ng FYY, Carter PE, Bourke ME, Grenyer BFS. What Do Individuals With Borderline  
819 Personality Disorder Want From Treatment? A Study of Self-generated Treatment and  
820 Recovery Goals. *J Psychiatr Pract*. 2019; 25(2): 148-155.
- 821 59. Ng FYY, Townsend ML, Miller CE, Jewell M, Grenyer BFS. The lived experience of  
822 recovery in borderline personality disorder: a qualitative study. *Borderline Personal Disord*  
823 *Emot Dysregul*. 2019 May 22; 6(10): 1-9.

- 824 60. Perseus K, Ojehagen A, Ekdahl S, Åsberg M, Samuelsson M. Treatment of Suicidal  
825 and Deliberate SelfHarming Patients With Borderline Personality Disorder Using Dialectical  
826 Behavioral Therapy: The Patients' and the Therapists' Perceptions. Arch Psychiatr Nurs.  
827 2003; 17(5): 218-227.
- 828 61. Perseus K, Ekdahl S, Åsberg M, Samuelsson M. To Tame a Volcano: Patients with  
829 Borderline Personality Disorder and Their Perceptions of Suffering. Arch Psychiatr Nurs.  
830 2005; 19(4): 160-168.
- 831 62. Rogers B, Acton T. 'I think we're all guinea pigs really': a qualitative study of  
832 medication and borderline personality disorder. J Psychiatr Ment Health Nurs. 2012; 19(4):  
833 341–347.
- 834 63. Rogers B, Dunne E. A qualitative study on the use of the care programme approach  
835 with individuals with borderline personality disorder. J Psychosoc Nurs Ment Health Serv.  
836 2013; 51(10): 38-45.
- 837 64. Sheperd A, Sanders C, Shaw J. Seeking to understand lived experiences of personal  
838 recovery in personality disorder in community and forensic settings – a qualitative methods  
839 investigation. BMC Psychiatry. 2017 Aug 01; 17(282): 1-10
- 840 65. Smith D. Experiences of Dialectical Behavioural Therapy by Adults Diagnosed with  
841 Borderline Personality Disorder. Doctoral Thesis, University of Liverpool. 2013. Available  
842 from: [https://livrepository.liverpool.ac.uk/13733/2/SmithDon\\_Jun2013\\_13733\\_\(abridged\).pdf](https://livrepository.liverpool.ac.uk/13733/2/SmithDon_Jun2013_13733_(abridged).pdf)
- 843 66. Stalker K, Ferguson I, Barclay A. 'It is a horrible term for someone': service user and  
844 provider perspectives on 'personality disorder'. Disability & Society. 2010 Oct 01; 20(4): 359-  
845 373.
- 846 67. van Veen M, Peters A, Mulder N, van Meijel B, Koekkoek B. A Qualitative Study of  
847 the Working Alliance between Patient and Community Mental Health Nurse during  
848 Interpersonal Community Psychiatric Treatment. Issues in Mental Health Nursing. 2019;  
849 41(3): 211-220.

- 850 68. Veysey S. People with a borderline personality disorder diagnosis describe  
851 discriminatory experiences. *Kotuitui: New Zealand Journal of Social Sciences Online*. 2013;  
852 9(1): 20-35. Conflicting Publication dates – Latest pub. Is 2019.
- 853 69. Walker T. ‘Seeing beyond the battled body’ An insight into selfhood and identity  
854 from women’s accounts who self-harm with a diagnosis of borderline personality disorder.  
855 *Counselling and Psychotherapy Research*. 2009 May 14; 9(2): 122-128.
- 856 70. Hirschi R, Rommel C, Hawryluk GW. Should we have a guard against therapeutic  
857 nihilism for patients with severe traumatic brain injury?. *Neural Regen Res*.  
858 2017;12(11):1801-1803.
- 859 71. SJ Paris J. Stepped care: an alternative to routine extended treatment for patients  
860 with borderline personality disorder. *Psychiatr Serv*. 2013; 64(10): 1035-1037.
- 861 72. SJ Liebke L, Bungert M, Thome J, Hauschild S, Grescher M, Schmahl C, et al.  
862 Loneliness, Social Networks, and Social Functioning in Borderline Personality Disorder.  
863 *Personality Disorders: Theory, Research, and Treatment*. 2017; 8(4): 349-356.
- 864 73. Troup et al. (*in preparation*) Clinician perspectives on community services for people  
865 with Complex Emotional Needs: A qualitative thematic meta-synthesis
- 866 74. Storebø OJ, Stoffers-Winterling JM, Völlm BA, Kongerslev MT, Mattivi JT, Jørgensen  
867 MS, et al. Psychological therapies for people with borderline personality disorder (review).  
868 *Cochrane Database Syst Rev*. 2020(4):1-510.
- 869 75. Morgan, 1979 (LE Commentary) Morgan, HO. *Death Wishes: The Understanding*  
870 *and Management of Deliberate Self Harm*. Chichester: Wiley. 1979



**Table 2: Quality assessment of the studies**

	CASP Item									
	1	2	3	4	5	6	7	8	9	10
Barnicot et al., 2015 [23]	Yes	Yes	Yes	Yes	Yes	Yes	Can't tell	Yes	Yes	Valuable
Barr, Hodge, & Kirkcaldy, 2008 [24]	Yes	Yes	Yes	Yes	Yes	Can't tell	Can't tell	Yes	Yes	Valuable
Bradbury, 2018 [25]	Yes	Yes	Yes	Yes	Yes	Can't tell	Yes	Yes	Yes	Valuable
Carrotte, Hartup, & Blanchard, 2019 [26]	Yes	Yes	Can't tell	Yes	Yes	No	No	Yes	Yes	Valuable
Castillo, Ramon, & Morant. 2013 [27]	Yes	Yes	Yes	Yes	Yes	No	Can't tell	Can't tell	Yes	Valuable
Chatfield, 2013 [28]	Yes	Yes	Yes	Yes	Yes	Yes	Yes	Yes	Yes	Valuable
Cicitira et al., 2017 [29]	Yes	Yes	Can't tell	Yes	Yes	Yes	Yes	Yes	Yes	Valuable
Clarke, 2017 [30]	Yes	Yes	Yes	Yes	Can't tell	No	No	No	Yes	Valuable
Clarke & Waring 2018 [31]	Yes	Yes	Yes	Yes	Yes	No	Can't tell	Yes	Yes	Valuable
Crawford et al., 2007 [32]	Yes	Yes	Yes	Yes	Yes	No	Yes	Yes	Yes	Valuable
Cunningham, Wolbert, & Lillie, 2004 [33]	Yes	Yes	Yes	Yes	Yes	Yes	Yes	Yes	Yes	Valuable
Donald et al., 2017 [34]	Yes	Yes	Yes	Yes	Yes	No	No	Yes	Yes	Valuable
Falconer et al., 2017 [35]	Yes	Yes	Yes	Yes	Yes	No	No	Yes	Yes	Valuable
Fallon, 2003 [36]	Yes	Yes	Yes	Yes	Yes	No	Yes	Yes	Yes	Valuable
Flynn et al., 2019 [37]	Yes	Yes	Can't tell	Yes	Yes	No	No	Can't tell	Yes	Valuable
Folmo, 2019 [38]	Yes	Yes	Yes	Yes	Yes	No	Yes	Yes	Yes	Valuable
Gillard, Turner, & Neffgen, 2015 [39]	Yes	Yes	Yes	Yes	Yes	Yes	Yes	Yes	Yes	Valuable
Gillard et al., 2015 [40]	Yes	Yes	Yes	Yes	Yes	No	Yes	No	Yes	Valuable
Goldstein, 2015 [41]	Yes	Yes	Yes	Yes	Yes	Yes	Yes	Yes	Yes	Valuable
Haeyan, Kleijberg, & Hinz 2018 [42]	Yes	Yes	Yes	Yes	Yes	Yes	Can't tell	Yes	Yes	Valuable
Helweg-Joergensen et al., 2019 [43]	Yes	Yes	Yes	Yes	Yes	No	No	Yes	Yes	Valuable
Hodgetts, Wright, & Gough, 2007 [44]	Yes	Yes	Yes	Yes	Yes	No	No	Yes	Yes	Valuable
Hummelen, Wilberg, & Karterud 2007 [45]	Yes	Yes	Can't tell	Yes	Yes	No	No	Yes	Yes	Valuable
Katsakou et al. 2012 [46]	Yes	Yes	Yes	Yes	Yes	No	Yes	Yes	Yes	Valuable



Katsakou et al. 2017 [47]	Yes	Yes	Yes	Yes	Yes	Yes	Yes	Yes	Yes	Valuable
Larivière et al., 2015 [48]	Yes	Yes	Yes	Yes	Yes	No	Yes	Yes	Yes	Valuable
Leung et al., 2019 [49]	Yes	Yes	Yes	Yes	Yes	No	No	Yes	Yes	Valuable
Lohamn et al., 2017 [50]	Yes	Yes	Yes	Yes	Yes	No	Yes	Yes	Yes	Valuable
Lonergan, Hodge, & Line 2017 [51]	Yes	Yes	Yes	Yes	Yes	Yes	Yes	Yes	Yes	Valuable
Long, Manktelow, & Tracey 2016 [52]	Yes	Yes	Yes	Yes	Yes	No	Yes	Yes	Yes	Valuable
McSherry et al., 2012 [53]	Yes	Yes	Can't tell	Yes	Yes	No	Yes	Yes	Yes	Valuable
Morant & King, 2003 [54]	Yes	Yes	Yes	Yes	Yes	No	No	No	Yes	Valuable
Morris, Smith, & Alwin, 2014 [55]	Yes	Yes	Yes	Yes	Yes	Can't tell	Yes	Yes	Yes	Valuable
Mortimer-Jones et al., 2019 [56]	Yes	Yes	Yes	Yes	Yes	No	Yes	No	Yes	Valuable
Naismith et al., 2019 [57]	Yes	Yes	No	Yes	Yes	No	No	Yes	Yes	Valuable
Ng et al., 2019a [58]	Yes	Yes	Yes	Yes	Yes	No	No	Yes	Yes	Valuable
Ng et al., 2019b [59]	Yes	Yes	Yes	Yes	Yes	No	No	Yes	Yes	Valuable
Perseus et al., 2003 [60]	Yes	Yes	Yes	Yes	Yes	Yes	Yes	Yes	Yes	Valuable
Perseus et al., 2005 [61]	Yes	Yes	Yes	Yes	Yes	Yes	No	Yes	Yes	Valuable
Rogers & Acton, 2012 [62]	Yes	Yes	Yes	Yes	Yes	Can't tell	Yes	Yes	Yes	Valuable
Rogers & Dunne, 2013 [63]	Yes	Yes	Yes	Yes	Yes	Can't tell	Yes	Yes	Yes	Valuable
Sheperd, Sanders, & Shaw, 2017 [64]	Yes	Yes	Yes	Yes	Yes	No	Yes	Yes	Yes	Valuable
Smith, 2013 [65]	Yes	Yes	Yes	Yes	Yes	Yes	Yes	Yes	Yes	Valuable
Stalker, Ferguson, & Barclay, 2010 [66]	Yes	Yes	Yes	Yes	Yes	No	Yes	Yes	Yes	Valuable
van Veen et al., 2019, [67]	Yes	Yes	Yes	Yes	Yes	Yes	Yes	Yes	Yes	Valuable
Veysey, 2013, [68]	No	Yes	Yes	Yes	Yes	Yes	Yes	Yes	Yes	Valuable
Walker, 2009, [69]	Yes	Yes	Yes	Yes	Yes	Yes	Yes	Yes	Yes	Valuable

Table 3 – Table of Quotes

Main Theme	Sub-theme	Quote*	Source
The Need For A Long Perspective On Treatment journeys	Changes Over Time	Recovery was experienced as a series of achievements and setbacks, as SUs moved back and forth between these two poles of each recovery process. During this movement, they usually maintained an overall sense of moving forward, despite setbacks.	Katsakou et al., 2017, [47]
		“I found that I was doing the same thing over and over again ... unless you understand yourself I don’t think that ... you can recover.”	Gillard et al., 2015, [39]
	Gradual Change In Awareness And Response To Emotions	“I think in terms of, like, recovery, in terms of being able to have a degree of self-control and being able to think ahead about the consequences of things so that rather than having a big blow up.”	Shepherd et al., 2017, [64]
	Gradual Improvements In Relationships	“I’ve got a better understanding of myself, and of other people... I value my emotional intelligence... I kind of developed it. And that’s all developed in my children as well and they’ve got much better.”	Ciclitira et al., 2017, [29]
	Recovery	“Yesterday was relatively ok, today is ok so far. But before, consistently, I had a period where I couldn’t actually leave the house and I was very dissatisfied and self-hating... So it’s difficult to actually trust the times when I am feeling alright.”	Katsakou et al. 2012, [46]
The Need For Individualised and Holistic Care		Some participants thought that there was a clash between their personal aspirations and the focus of treatment. They felt that therapy did not address all problems they were struggling with. Some treatments were experienced as focusing almost exclusively on specific topics, i.e. self-harming or relationships (often as they were enacted in the group setting), leaving service users frustrated when they could not address other issues that were either equally or more important to them. "DBT helped, but it didn’t answer all of my questions. It didn’t help me to work things through myself, it didn’t help me to achieve my goals really... I was trying to get over my divorce and also my relationship with my mum and men, and I was trying to work through it but it was all about other things, it was about self-harming, it was about mindfulness..."	Katsakou et al. 2012, [46]
	Need For Positive Approaches To Care	“It wasn’t until I did a lot of dealing with the issues that were underneath it that it was possible for me to stop.”	Long, Manktelow, & Tracey, 2016, [52]
	Medications	“I just think when you first come into service that they experiment on you ... over the	Rogers & Acton,

		course of years they've experimented with lots of different drugs. I've felt like they didn't understand, and they just like piled me with any sort of medication."	2012, [62]
Large Variations In Service Access And Quality	Access To Services	"I was struggling ... I guess it's all a learning journey, but it would be helpful if, for me, if I had more access to stuff off the bat than having to search for it myself and figure it out myself."	Carrotte et al., 2019, [26]
		[E]ven in a London-based service, there were concerns about access for people in one borough because the service was based in the other of the two boroughs it served. With the frequent mergers of NHS Trusts, catchment areas are constantly becoming larger and making access more of an issue.	Crawford et al. 2007, [32]
	Quality Of Services	The first experience for all the participants was moving into the mental health system via referral from their general practitioner (GP). Here they met various mental health professionals, yet the explanations given were highly variable. Despite their distress and confusion some received no explanations concerning the roles of the individuals they were seeing or of the function of their contact with them.	Fallon 2003, [36]
	The Role Of Specialist Services	Service users generally felt they received better help and support from a specialist service for personality disorder than from community mental health teams... The specialist service [used by participants] was also beneficial for promoting the use of alternative forms of treatment, i.e. talking therapies. The specialist service also placed an emphasis on evidence based practice, offering a treatment that is widely acknowledged to be helpful for those with the BPD diagnosis: "My DBT [Dialectical Behaviour Therapy] that I'm doing now – I've done DBT a bit on the past – but I find it more beneficial than medication for instance."	Rogers & Acton, 2012, [62]
	Continuity Of Care	"You're discharged from that service, then you're left high and dry."	Rogers & Dunne, 2013 [63]
The Centrality Of Therapeutic Relationships		"I felt like I didn't want to talk to them you know, if they didn't understand me they are never going to come up with something different, they are not going to turn my life around."	Bradbury, 2016, [25]
		"...you don't know you are unwell and the only person who is connecting with you is my care coordinator. Because she knows me inside and out all this time and although you see different psychiatrists- they do get to know you- but she has been the rock all the way and she's been the same person all the way along."	Bradbury, 2016, [25]
	Relationship	Overall, participants expressed preference for therapy that was not too soft and not too	Goldstein 2015,

	Dynamics And Involvement	hard, so to speak. They seemed to desire the allowance of moderate movement and collaborative reworking of the therapy structure and relationship but, ultimately, they did not want to call all the shots or to feel they were stronger than their therapists.	[41]
	Family And Friends	"I can talk to my family more effectively about what's going on in my life, whereas before I was afraid to tell them what was happening...Most of it is communication. A lack of communication gives dark thoughts."	Cunningham, Wolbert, & Lillie 2004, [33]
		The client may perceive responsibilities to others as having particular influence over their continued attendance: "My family. They said 'Cathy, you've got to do it, you've got to go [to individual therapy]. You can't go on like this."	Chatfield, 2013, [28]
		"I spoke to [Partner], my other half, about what I learnt... in turn sometimes when I was maybe lacking in using my skills, he would be able to give me that kick up the backside."	Barnicot et al., 2015, [23]
	Peer Support	"Maybe just the fact that it was actually for people with a personality disorder made a big difference in my head. Rather than going to ... I don't know, an anxiety group or, so maybe in my head it was like 'okay, perhaps this is somewhere that I could belong."	Gillard et al., 2015, [40]
		"You realised that you weren't the only one feeling like that, there were other people in the world that felt the way that you did and being able to talk to them and hear their experiences of how they were dealing with it was helpful."	Crawford et al., 2007, [32]
	Group Treatment	'Ruth' reported that during her first group session she struggled with 'hard hitting' topics such as suicide and 'Sarah' recalled finding it 'difficult and scary' when she thought another group member was criticising her.	Lonargain et al., 2017, [51]
		"When you're in the group sessions... in your mind you kind of learn to associate what the lesson is about with what your own life, so then you can make notes to say 'Oh like this'. And you read back through, so yeah, you understand exactly what it means to you."	Barnicot et al., 2015, [23]
Impacts Of 'Personality Disorder' Diagnosis		"I feel like once you get a diagnosis of BPD they sort of act like you are kind of beyond their...bother. Like they don't especially want to do anything because you are not going to be easy."	Bradbury, 2016, [25]

\* Quotation marks indicate a service user quote published in the paper. No quotation marks indicate a section of text quoted from the paper.

**Table 1: Study Characteristics**

First Author	Population characteristics (age, gender, country)	Treatment and diagnosis	Data collection and analysis	Main themes
Barnicot et al., 2015 [23]	N=40 Age: Mean=33 (SD=10.2) Sex: 85% Female United Kingdom	Dialectical behavioural therapy (DBT), 12 week individual sessions  Personality disorders	Semi-structured interview  Thematic analysis	a) Difficulty learning the skills (anxiety, too much information/jargon) b) Difficulties putting the skills into practice (loss of control, negative thoughts) c) Personal journey to a new life (overcoming initial difficulties, committing to change, personalising skill, skills becoming habitual) d) Environment that supports change (others in the group, therapist, friends and family)
Barr, Hodge, & Kirkcaldy, 2008 [24]	N=23 Age: 17-66 Sex: 17/20* (85%) female United Kingdom	Therapeutic Community Day Services  Personality Disorders	Semi-structured interviews  Thematic analysis	a) The lives of service users: problem issues and areas b) Experiences of the therapeutic community day services
Bradbury, 2018 [25]	N=8 Age: 21-54 Sex: 8 (100%) Female United Kingdom	Community Mental Health Team  Borderline Personality Disorder	Semi-structured interview  Interpretative Phenomenological Analysis	a) Trust b) Qualities of the care coordinator c) The complexity of the relationship d) Developing a safe base
Carrotte, Hartup, & Blanchard, 2019 [26]	N=9 Age: not reported Sex: 6 (75%) Female Australia	Treatment or support service for personality disorder  Borderline personality disorder	Semi-structured interview and focus groups  Thematic (framework) analysis	a) Identity and discovery b) (Mis)communication c) Complexities of care d) Finding what works (for me) e) An uncertain future
Castillo,	N=66	Combined Day and Residential	Semi-structured interview and	a) Mapping the process of recovery

Ramon, & Morant. 2013 [27]	Age: 18-65 Sex: 47 (71%) Female United Kingdom	Respite Service Personality Disorders	focus group Thematic analysis	<ul style="list-style-type: none"> <li>b) A sense of safety and building trust</li> <li>c) Feeling cared for and creating a culture of warmth</li> <li>d) A sense of belonging and community</li> <li>e) Learning the boundaries – love is not enough</li> <li>f) Containing experiences and develop skills</li> <li>g) Hopes, dreams and goals and their relationship to recovery</li> <li>h) Achievements, identity and roles</li> <li>i) Transitional recovery and how to maintain healthy attachment</li> </ul>
Chatfield, 2013 [28]	N=6 Age: Not reported Sex: Not reported United Kingdom	Service specialising in psychodynamic interventions Personality disorders	Semi-structured interviews and focus group Constructivist grounded theory	<ul style="list-style-type: none"> <li>a) Hope</li> <li>b) External demands</li> <li>c) Waiting list</li> <li>d) Expectations of therapy</li> <li>e) Knowledge of therapy</li> <li>f) Experience of therapy</li> <li>g) Information vacuum</li> </ul>
Ciclitira et al., 2017 [29]	N=59 Age: 23-67 Sex: 59 (100%) Female United Kingdom	Women's Community Health Centre Symptoms including self-harm, suicidal ideation, complex trauma)	Semi-structured interview Thematic analysis	<ul style="list-style-type: none"> <li>a) Violence and loss in the context of female oppression</li> <li>b) A sanctuary for women</li> <li>c) Non-medicalised long-term counselling in a safe setting</li> <li>d) Benefits of the long view</li> </ul>
Clarke, 2017 [30] Same sample as Clarke 2018	N=21 Age: Not reported Sex: Not reported. United Kingdom	Day Therapeutic Community Personality Disorders	Narrative interviews Thematic analysis	<ul style="list-style-type: none"> <li>a) Empowerment through inclusion</li> <li>b) Power through exclusion</li> </ul>
Clarke & Waring 2018 [31] Same sample as	N=21 Age: Not reported Sex: Not reported	NHS Day Community Personality Disorders	Narrative interviews Interpretative Data Analysis	<ul style="list-style-type: none"> <li>a) Inclusivity within rituals: solidarity through negative transient emotions</li> <li>b) Transforming negative transient emotions in to high EE</li> <li>c) Exclusivity within rituals: negative transient emotions</li> </ul>

Clarke 2017	United Kingdom			reinforcing low EE
Crawford et al., 2007 [32]	N= 133 Age: 18 to 69 (Median=37.2 years) Sex: 70% Female United Kingdom	11 pilot services for 'personality disorder' across England Diagnosis not reported	Semi-structured interviews and focus groups Thematic (framework) analysis	a) Desperation and hope b) Information c) Assessment d) Diagnosis e) Early impressions
Cunningham, Wolbert, & Lillie, 2004 [33]	N=14 Age: 23-61 Sex: Not reported United States	Assertive Community Treatment Borderline Personality Disorder	Semi-structured interview Not specified.	a) General reflections b) Assessment of Program Component c) Effect of DBT on Day-to-Day Life
Donald et al., 2017 [34]	N=17 Age: 19-59 Sex: 15 (88%) Female Australia	Specialist Outpatient Service Borderline Personality Disorder	Semi-structured interviews Thematic analysis	a) Support from others b) Accepting the need for change c) Working on trauma without blaming oneself d) Curiosity about oneself e) Reflecting on one's behaviour
Falconer et al., 2017 [35]	N=15 Age: 20 – 43 (Mean=31.2) Sex: 12 (80%) Female United Kingdom	Personality Disorder Service Borderline personality disorder	Semi-structured interviews Thematic analysis	a) Visualisation helps me to express and understand myself b) Visual narrative helps me to keep track and participate c) Avatars help me take and understand another's perspective d) Allowing me to see the big picture e) Giving me distance to think clearly f) Group therapy is best, but one-to-one sessions have value too
Fallon, 2003 [36]	N=7 Age: 25 – 45	Mental health trust Borderline Personality Disorder	Unstructured interviews Grounded theory	a) Living with BPD b) Service response c) Relationships

	Sex: 4 (57%) Female United Kingdom			d) Travelling through the system
Flynn et al., 2019 [37]	N=131 Age: Not reported Sex: Not reported United Kingdom	Internet survey Emotionally unstable personality disorder	Internet survey (service users) and focus groups (staff) Thematic analysis	a) Being diagnosed with personality disorder b) Receiving consistent and compassionate care c) Understanding recovery in personality disorder d) Access to services e) Access to effective therapies f) Staff training and support
Folmo, 2019 [38]	Not reported Norway	Mentalisation based therapy Borderline personality disorder	Transcripts of therapy sessions Interpretative phenomenological analysis	a) Losing authority and losing battles b) Protecting the patient from therapy c) Leaning on the alliance in the battle of the comfort zone d) Using empathetic focus to carefully battle affect avoidance
Gillard, Turner, & Neffgen, 2015 [39]	N=6 Age: 26-65 Sex: 3 (50%) Female United Kingdom	Specialist services with peer support groups Personality disorders or self-identified as having PD-related symptoms/needs	Semi-structured interview Thematic analysis	a) The internal world b) The external world c) Diagnosis d) Recovering or discovering the self - reconciling the internal and external worlds e) Recovery and discovery - doing things differently f) Recovery and discovery - feeling and thinking differently.
Gillard et al., 2015 [40]	N=38 Age: Mean=36.3 Sex: 28 (74%) Female (n=28) United Kingdom	Community based support group Personality disorders or self-identified as having PD-related symptoms/needs	Semi-structured interview Thematic and matrix analysis	a) Access and self-referral b) Peer support groups and Coping Process Theory c) Service users as staff d) Community-based support
Goldstein, 2015 [41]	N=7 Age: 28-45 Sex: 7 (100%) Female	Community Service Centres and Clinics Personality disorders or self-identified as having PD-related	Semi-structured interview Not specified	a) Background Information and Presentation b) Synthesis of Object Relations Material From the Interview Portion c) CCRT-RAP Interview Results d) My Interpersonal Responses



	United States	symptoms/needs		e) Interpersonal Patterns Enacted in Therapy Relationships
Haeyan, Kleijberg, & Hinz 2018 [42]	N=8 Age: 22 – 50 (Mean=36.75) Sex: 6 (75%) Female Netherlands	Outpatient treatment unit for personality disorder  Personality disorders (borderline, avoidance, obsessive-compulsive, narcissistic)	Semi-structured interviews  Thematic analysis	a) Experiences with the art assignments b) Material handling/interaction c) Preferred approach in the art process and the Expressive Therapies Continuum level d) Preferred approach in the art process and emotion regulation e) Therapeutic value of the combination of factors
Helweg-Joergensen et al., 2019 [43]	N=16 Age: Mean=28.0 (SD=6.2) Sex: Not reported Denmark	Public outpatient psychiatric care  Emotionally unstable personality disorder	Focus groups  Grounded theory	a) Barriers and facilitators b) Balancing acceptance and change during inside-out innovation
Hodgetts, Wright, & Gough, 2007 [44]	N=5 Age: 24 – 48 (Mean=35.6) Sex: 3 (60%) Female United Kingdom	Dialectical Behaviour Therapy service  Borderline personality disorder	Semi-structured interview  Interpretative Phenomenological Analysis	a) Joining a DBT Programme (external and internal factors) b) Experience of DBT (specific and non-specific factors) c) Evaluation of DBT (change, evaluation and role of the past and future)
Hummelen, Wilberg, & Karterud 2007 [45]	N=8 Age: 24 – 48 (Mean=35.6) Sex: 8 (100%) Female Norway	Psychotherapeutic day hospitals  Borderline personality disorder	Semi-structured interview  Not specified	a) Difficult transition b) Group therapy was too distressing c) Outpatient group therapy was insufficient d) Not able to make use of the group e) Complicated relationship to the group f) Negative aspects of the patient–therapist relationship g) Too much external strain h) Desire to escape from therapy i) No interest in further long–term group therapy j) Reasons not mentioned by the patients
Katsakou et al. 2012 [46]	N=48	Specialist Services including community mental health teams	Semi- structured interview  Thematic Analysis & Grounded	a) Personal goals and/or achievements during recovery b) Balancing personal goals of recovery versus service targets

Same sample as Katsakou et al. 2017	Age: Mean= 36.5 Sex: 39 (81%) Female United Kingdom	and psychological therapies Personality Disorders	Theory	c) How recovered do people feel? d) Problems with the word 'recovery'
Katsakou et al. 2017 [47] Same sample as Katsakou et al. 2012	N=48 Age: Mean= 36.5 Sex: 39 (81%) Female United Kingdom	Specialist Services including community mental health teams and psychological therapies Borderline Personality Disorder	Semi-structured interview Thematic analysis	a) Processes of recovery: Fighting ambivalence and committing to taking action. Moving from shame to self-acceptance and compassion. Moving from distrust and defensiveness to opening up to others. b) Challenges in therapy: Balancing self-exploration and finding solutions. Balancing structure and flexibility. Confronting interpersonal difficulties and practicing new ways of relating. Balancing support and independence.
Larivière et al., 2015 [48]	N=12 Age: 23- 63, (Mean=37.2; SD=13.3) Sex: 12 (100%) Female Canada	Not reported Borderline personality disorder	Picture collage and semi-structured interview Thematic analysis	a) Living with borderline personality disorder b) Dimensions of recovery (related to the person and the environment) c) Facilitators
Leung et al., 2019 [49]	N=11 Age: 24 – 58 Sex: 9 (82%) Female China	Emergency medical ward History of self-harm	Semi-structured interview Thematic analysis	a) Service availability b) Accessibility c) Affordability d) Acceptability

Lohamn et al., 2017 [50]	N=500 Age: 18 and above Sex: Not reported United States	Borderline Personality Disorder Resource Centre  Borderline Personality Disorder	Written or Telephone transcripts of previously collected data through unstructured interviews  Conventional Qualitative Content Analysis	a) Requested Services b) Mental Health Literacy and Marginalization c) Family and Caregiver Resources d) Insurance and Finances e) Medical and Psychiatric Comorbidity f) Crisis Services
Lonargain, Hodge, & Line 2017 [51]	N=7 Age: 26 – 52 (Mean=39.9) Sex: 5 (71%) Female United Kingdom	Mentalisation-based therapy (MBT) groups  Borderline personality disorder	Semi-structured interview  Interpretative Phenomenological Analysis	a) Experiencing group MBT as unpredictable and challenging b) Building trust: a gradual but necessary process during MBT c) Putting the pieces together: making sense of the overall MBT structure d) Seeing the world differently due to MBT: a positive shift in experience+
Long, Manktelow, & Tracey 2016 [52]	N=10 Age: 19 – 42 (Mean=31) Sex: 8 (80%) Female United Kingdom	Not reported  Borderline personality disorder	Semi-structured interview  Grounded theory	a) Building up trust b) Seeing beyond the cutting c) Human contact d) Integrating experiences
McSherry et al., 2012 [53]	N=30 Age: 32-55 Sex: Not reported Ireland	Community Adult Mental Health  Borderline Personality Disorder or self-identified as having PD-related symptoms/needs	Semi-structured interview and focus group  Thematic analysis	a) Evaluation of therapy b) Treatment impact
Morant & King, 2003 [54]	N=15 Age: Not specified Sex: Not specified United Kingdom	Outreach Service Team  Personality Disorders	Semi-structured interview  Content thematic analysis	Not clearly specified

Morris, Smith, & Alwin, 2014 [55]	N=9 Age: 18-65 Sex: Not reported United Kingdom	Adult Mental Health Services Borderline Personality Disorder	Semi-structured interview Thematic analysis	a) The diagnostic process influences how service users feel about BPD b) Non-caring care c) It's all about the relationship
Mortimer-Jones et al., 2019 [56]	N=8 Age: Not reported Sex: 7 (88%) Female Australia	Short term residential service Borderline personality disorder	Semi-structured interview Inductive phenomenological analysis	a) Benefits of the programme b) Enhanced client outcomes c) Impact of the physical environment d) Ways of enhancing the service
Naismith et al., 2019 [57]	N=53 Age: 18 – 57 (Mean=32; SD=11.1) Sex: 44 (83%) Female United Kingdom	Outpatient personality disorder service Personality disorders (borderline, narcissistic, not specified)	Focus group Thematic analysis	a) Experience of treatment: compassion, relaxation, difficult, negative emotions b) Inhibitors: weak imagery ability, fear of compassion, lack of compassionate experiences, distressing affect/cognitions, lack of distress, psychological symptoms
Ng et al., 2019a [58]	N=102 Age: 18 – 56 (Mean=29.7; SD=8.84) Sex: 89 (87%) Female Australia	Community-based psychotherapy programme Borderline personality disorder	First assessment session for treatment Inductive conventional content analytic approach	a) Reducing symptoms b) Improve well-being c) Better interpersonal relationships d) Greater sense of self
Ng et al., 2019b [59]	N=14 Age: 18 – 52 (Mean=33.26; SD=10.26) Sex: 14 (100%) Female Australia	Online survey by mental health organisations Borderline personality disorder	Semi-structured interview Interpretive phenomenological analysis	a) Stages of recovery (Being stuck, Diagnosis, Improving experience) b) Developing greater awareness of emotions and thoughts c) Strengthening sense of self d) Developing greater awareness of emotions and thoughts e) Processes of recovery in borderline personality disorder f) Active engagement in the process of recovery g) Hope

				<ul style="list-style-type: none"> <li>h) Engagement with treatment services</li> <li>i) Engaging in meaningful activities and relationships</li> </ul>
<p>Perseius et al, 2003 [60]</p> <p>Same sample as Perseius, 2005</p>	<p>N=10</p> <p>Age: 22 – 49, (Median=27)</p> <p>Sex: 10 (100%) Female</p> <p>Sweden</p>	<p>Outpatient treatment</p> <p>Borderline personality disorder</p>	<p>Individual, focused interview</p> <p>Content analysis</p>	<ul style="list-style-type: none"> <li>a) The therapy is life-saving</li> <li>b) The therapy provides skills to help conquer suicidal and self-harm impulses</li> <li>c) Respect and confirmation is the foundation</li> <li>d) The method of therapy-brings understanding and focus on the problems</li> <li>e) Your own responsibility and the stubborn struggle with yourself</li> <li>f) The therapy contract brings support and challenge</li> <li>g) The group therapy - hard but necessary</li> <li>h) The telephone coaching – important crises support</li> <li>i) Not being understood and disrespectful attitudes</li> <li>j) Discontinuity and betrayal</li> <li>k) The poorly adapted tools of psychiatric care</li> </ul>
<p>Perseius et al., 2005 [61]</p> <p>Same sample as Perseius, 2003</p>	<p>N=10</p> <p>Age: 22 – 49, (Median=27)</p> <p>Sex: 10 (100%) Female</p> <p>Sweden</p>	<p>Outpatient treatment for self-harming</p> <p>Borderline personality disorder</p>	<p>Narrative interviews, supplemented by biographical material</p> <p>Hermeneutic approach</p>	<ul style="list-style-type: none"> <li>a) Life on the edge</li> <li>b) Struggle for health and dignity</li> <li>c) The good and the bad act of psychiatric care in the drama of suffering</li> </ul>
<p>Rogers &amp; Acton, 2012 [62]</p>	<p>N=7</p> <p>Age: 21 – 43</p> <p>Sex: 6 (86%) Female</p> <p>United Kingdom</p>	<p>Specialist service for personality disorder</p> <p>Borderline personality disorder</p>	<p>Semi-structured interview</p> <p>Thematic analysis</p>	<ul style="list-style-type: none"> <li>a) Staff knowledge and attitudes</li> <li>b) Lack of resources</li> <li>c) Recovery pathway</li> </ul>
<p>Rogers &amp; Dunne, 2013 [63]</p>	<p>N=7</p> <p>Age: 21-61</p> <p>Sex: 5 (71%) Female</p> <p>United Kingdom</p>	<p>Specialist Personality Disorder Service</p> <p>Personality Disorders</p>	<p>Focus groups</p> <p>Thematic analysis</p>	<ul style="list-style-type: none"> <li>a) Having a Voice</li> <li>b) Progression versus Consistency</li> <li>c) Moving On from Services</li> <li>d) Understanding Personality Disorder</li> <li>e) Understanding Recovery</li> <li>f) Lack of Information</li> <li>g) Follow Up</li> </ul>

				h) Accessing Treatment
Sheperd, Sanders, & Shaw, 2017 [64]	N=17 Age: 31-60 Sex: 12 (71%) Female United Kingdom	General Community Service Personality Disorders	Semi-structured interview Thematic analysis	a) Understanding early lived experience as informing sense of self b) Developing emotional control c) Diagnosis as linking understanding and hope for change d) The role of mental health services.
Smith, 2013 [65]	N=6 Age: 22 – 30 (Mean=26) Sex: 6 (100%) Female United Kingdom	NHS community-based DBT programme Borderline personality disorder	Semi-structured interview Interpretive phenomenological analysis	a) Therapeutic Group Factors b) Therapist factors c) Personal change d) Challenges to be overcome e) Personalised problem solving f) Opposing expectations
Stalker, Ferguson, & Barclay, 2010 [66]	N=10 Age: 27 – 52 Sex: 8 (80%) Female United Kingdom	Mental Health Resource Centres Personality disorder	Semi-structured interview Grounded theory	a) Understanding of personality disorder b) Perceived helpfulness of the diagnosis c) Difficulties faced by people with a personality disorder diagnosis d) Perceived causes of people's difficulties e) What helps?
van Veen et al., 2019, [67]	N=13 Age: 20-60 Sex: 11 (85%) Female Netherlands	Outpatient services Personality disorders (Borderline, Obsessive compulsive, Avoidant, Dependent))	Semi-structured interview Grounded theory	a) Goals that were mutually agreed on b) Mutually agreed-on tasks c) The interpersonal relationship between the CMHN and the patient d)
Veysey, 2013, [68]	N=8 Age: 25 – 65 Sex: 6 (75%) Female New Zealand	Mental health awareness newsletters Borderline personality disorder	Semi-structured interview Interpretive phenomenological analysis	a) Self-harm and discriminatory experiences b) Negative messages about BPD c) Negative impact on self-image d) Stigma and complaints e) Helpful behaviour: connecting; seeing more f) Individuals have an impact g) Contrasting ideas

Walker, 2009, [69]	<p>N=4</p> <p>Age: 30-54</p> <p>Sex: 4 (100%) Female</p> <p>United Kingdom</p>	<p>Community centres</p> <p>Borderline Personality Disorder</p>	<p>Narrative interview</p> <p>Narrative thematic analysis</p>	<p>a) 'Self-harm' - seeing beyond the scars</p> <p>b) 'Being known' as a self-harmer</p>
--------------------	--------------------------------------------------------------------------------	-----------------------------------------------------------------	---------------------------------------------------------------	------------------------------------------------------------------------------------------

\* Data incomplete