

## Use of machine learning to predict hypertension-related complication outcomes of varying severity

Jasmine M. McCammon<sup>1,3</sup>, Sricharan Bandhakavi<sup>1</sup>, Doreen Salek<sup>2</sup>, Zhipeng Liu<sup>1</sup>, Xianglian Ni<sup>1</sup>, Natalie Benner<sup>2</sup>, Ronda Rogers<sup>2</sup>, Hollie Yoder<sup>2</sup>, Shelley Riser<sup>2</sup>, Farbod Rahmanian<sup>2,3</sup>

<sup>1</sup> Geneia LLC 50 Commercial St, Manchester, NH 03101

<sup>2</sup> Geneia LLC 1000 N Cameron St Ste 500, Harrisburg, PA 17103

<sup>3</sup> To whom correspondence may be addressed ([Jasmine.McCammon@Geneia.com](mailto:Jasmine.McCammon@Geneia.com),  
[Fred.Rahmanian@Geneia.com](mailto:Fred.Rahmanian@Geneia.com))

\* Certain data used in this study were supplied by International Business Machines Corporation. Any analysis, interpretation, or conclusion based on these data is solely that of the authors and not International Business Corporation.

## **ABSTRACT**

### **Objective**

A challenge in hypertension-related risk management is identifying which people are likely to develop future complications. To address this, we present administrative-claims based predictive models for hypertension-related complications.

### **Materials and Methods**

We used a national database to select 1,767,559 people with hypertension and extracted 112 features from past claims data based on their ability to predict hypertension complications in the next year. Complications affecting kidney, brain, and heart were grouped by clinical severity into three stages. Extreme gradient boosting binary classifiers for each stage were trained and tuned on 75% of the data, and performance on predicting outcomes for the remaining data and an independent dataset was evaluated.

### **Results**

In the cohort under study, 6%, 17%, and 7% of people experienced a hypertension-related complication of stage 1, stage 2, or stage 3 severity, respectively. On an independent dataset, models for all three stages performed competitively with other published algorithms by the most commonly reported metric, area under the receiver operating characteristic curve, which ranged from 0.82-0.89. Features that were important across all models for predictions included total medical cost, cost related to hypertension, age, and number of outpatient visits.

### **Discussion**

The model for stage 1 complications, such as left ventricular hypertrophy and retinopathy, is in contrast to other offerings in the field, which focus on more serious issues such as heart failure and stroke, and affords unique opportunities to intervene during earlier stages.

### **Conclusion**

Predictive analytics for hypertension outcomes can be leveraged to help mitigate the immense healthcare burden of uncontrolled hypertension.

## LAY SUMMARY

As the leading preventable risk factor for morbidity and mortality in the world, identifying which people with hypertension are likely to exacerbate is critically important for development of effective intervention strategies. Here we present a suite of predictive models that can predict future risk of development of hypertension-related complications. To have utility for triaging as well as identifying mild cases before they progress to critical end phases, the models predict three different stages of severity of hypertension-related complications. Our algorithms utilize variables calculated for the most recent 12 months, and predict probability of a hypertension-related complication for the next 12 months using administrative claims as the data source. Because the types of complications that have been analyzed can also result from comorbidities besides hypertension, such as diabetes and hyperlipidemia, these diagnoses are included as variables. Other variables pertain to demographic characteristics, prescription information, relevant procedures, and utilization patterns. Overall, all three models exhibited strong predictive performance. The ability to use straightforward variables found in claims data to predict future risk of disease-related complications, complemented with targeted clinical intervention strategies, has the potential to reduce cost of care and improve health outcomes for the many people living with hypertension.

## **BACKGROUND AND SIGNIFICANCE**

Hypertension (HTN) is the chronic elevation of blood pressure due to changes in cardiac output and/or systemic vascular resistance, which can lead to organ damage and mortality if left unmanaged. The overall prevalence of HTN is high, nearly a third of the global adult population, making HTN one of the basic cost drivers in healthcare systems [1]. Despite continuing advances in treatment options, HTN remains uncontrolled in more than half of the population on medication [2]. As a result of its high prevalence and difficulty to adequately manage, HTN is the leading preventable risk factor globally for premature death and disability [3].

The contribution of HTN to morbidity and mortality is due to the long term effects of chronic, unmanaged high blood pressure. HTN itself is without symptoms, but left uncontrolled, will lead to systemic organ damage over time [4]. Initial stages of damage such as microalbuminuria and left ventricular hypertrophy are subtle and may go unrecognized until they've progressed to more serious complications such as chronic kidney disease and heart failure [5]. Estimates suggest that preventing hypertension could reduce cardiovascular death by 38% in females and 30% among males [6]. Another study found that 48% of population risk for stroke could be attributed to HTN, the highest of all factors examined [7]. After diabetes, HTN is the second leading cause of end-stage renal disease [8]. Therefore, the ability to predict who with HTN is likely to exacerbate, or present with HTN-related complications, before such events occur is a powerful opportunity to mitigate some of this morbidity and mortality burden.

We found a number of studies that used machine learning algorithms to predict various complications associated with HTN. Diverse data sources, including EHR, clinical trial data, and national healthcare databases from the US, Korea, China, and Europe were utilized to predict complications such as cardiovascular disease, dementia, myocardial infarction, acute coronary syndrome, cerebrovascular disease, stroke, kidney disease, heart failure, coronary heart disease, ischemic heart disease, and

cardiovascular death [9-17]. In general, the number of people included in these cohorts ranged from 3,395 to 133,176; only three included people below the age of 40 and one did not report age ranges [9, 10, 16, 17]. The area under the receiver operating characteristic (AUROC) was the most commonly reported evaluation metric, ranging from 0.56-0.84, with an average of 0.71 across seven studies [9-13, 15, 17].

From this, we saw an opportunity to contribute to this strong predictive modeling work by exploiting a larger dataset, a national collection of administrative claims from commercially-insured individuals, with hypertensive members in the millions. We refer to this source as the CCAE (Commercial Claims and Encounters) database within this manuscript. Including people in the age range of 18-64 represents a lower risk population for complications, but more opportunities for targeted intervention before the risks may become unmanageable. Our independent test set did include people over 65 to assess the model's generalizing ability to this demographic. In addition, rather than focusing on a specific type of complications, a specific organ system, or a composite of severe complication outcomes as has been done in previous studies, we chose to build separate models to predict the complications that reflect the progression of chronic HTN. Composite outcomes across organ systems were grouped into three stages of increasing clinical severity as described by Messerli and colleagues [18]. Interventions during earlier signs and symptoms of HTN complications are more likely to be successful than interventions at later stages and may help to prevent later stage HTN complications as well [19]. Features thought to correlate directly or indirectly with HTN-related complications were calculated for the intake window, a 12-month period before the year for prediction, and extreme gradient boosting (XGBoost) classifiers were trained to predict the likelihood of these outcomes in the following year. Overall, model performance was strong on the independent dataset (AUROC = 0.82-0.89), comparable or better than the previously published algorithms mentioned above, in addition to having the benefits of providing early intervention opportunities. These models exhibit practical utility from a care

management perspective to triage and manage hypertensive populations, which are inherently large, for different levels of HTN complication severity.

## **MATERIALS AND METHODS**

### **Study design and sample data**

We used administrative claims data generated between January 1, 2016 to December 31, 2017 from commercially-insured individuals in the CCAE database. The cohort of study was selected based on data from 2016 and HTN-related complication events were identified in 2017 data. To be included in the cohort, members were presumed to have HTN based on their medical and pharmacy claims: they either had to have at least two claims 14 or more days apart with a HTN diagnosis or at least one claim with a HTN diagnosis and at least two pharmacy claims with anti-HTN medications (for medical codes used see Supplementary Table S1). They also had to be continuously enrolled in 2016 and 2017 in medical and pharmacy benefits and be at least 18 years old. We also explored cohorts that did and did not include members that had complication events during the intake window of 2016.

Features for each cohort member were then calculated for 2016 to use for predicting hypertension complications in 2017. An independent dataset of administrative claims from an independent payer not in the CCAE database was used to process data in the exact same manner and validate final model performance.

### **Outcome variable: Defining a hypertension complication**

Outcomes were identified during the prediction window of January 1, 2017 to December 31, 2017. In order to maximize applications and utility, we chose to build three different models predicting different levels of complication severity across different target organ systems (Figure 1). Stage 1 complications are the least severe, and include proteinuria, left-ventricular hypertrophy, and retinopathy. Stage 2

complications, the next step in progression of unmanaged hypertension, include chronic kidney disease, coronary artery disease, and transient ischemic attack. The most severe complications, stage 3, include end-stage renal disease, heart failure, and stroke. As a result, stage 1 and stage 2 models can be used to target people in the early stages of HTN progression, while predictions for stage 3 complications can be used to triage for likelihood of severe HTN exacerbations for those that have already progressed to an advanced disease state. ICD-10-CM diagnosis codes [20] used to identify these complication events can be found in Supplementary Table S2. These labels were treated as non-mutually exclusive when training each model. In other words, the same cohort was used to fit all three models and members were not excluded if they had multiple stages of complications during the prediction window.

### **Feature candidates**

We compiled 112 different features based on previous literature and clinical information, all during the intake window of January 1, 2016 to December 31, 2016. To ascertain the feature of whether each member was taking anti-hypertensives for the first time in 2016, what we call a “progressor” [21], pharmacy data from 2015 was also used, but we allowed for progressor status as unknown if they were not enrolled in 2015. Demographic features were age and gender. Diagnoses included comorbidities common with hypertension and known to contribute to increased likelihood of disease exacerbation, such as diabetes and hyperlipidemia, as well as other conditions that could contribute to the complication set. For example, heart valve disorders could also lead to arrhythmias. The Charlson Comorbidity Index was calculated as well [22]. Prescription features pertained to anti-hypertensive drug classes: diuretics, calcium channel blockers, agents acting on the renin-angiotensin system, beta blockers, vasodilators, and adrenergic antagonists. Mono- and polytherapies as well as medication changes were evaluated [21]. Medications indicative of comorbidities, such as metformin for diabetes, were included, as well as medications known to interfere with anti-hypertensives, like steroids [23]. In



the absence of clinical data, counts of unique dates with particular procedure codes were used in place of laboratory results, including tests for HbA1c and creatinine levels. Finally, utilization was assessed as counts of unique visit dates in different care settings: outpatient (OP), inpatient (IP), and emergency department (ED), as well as two cost features: total medical spending for the year and spending for claims with hypertension diagnoses.

### **Machine learning approaches and prediction performance evaluation**

Several algorithm architectures were tested, and we decided to use the XGBoost classifier [24], which had the best performance during initial data exploration phases. Three separate models were constructed for each stage to allow flexibility in fine-tuning for the most accurate predictions of each stage of complication. For model training and evaluation, data were split 75%-25% for training and test sets using stratified sampling. Model hyperparameters tuned with random grid search and cross validation were learning rate, maximum depth, minimum child weight, and subsample rate.

Model performance was evaluated with several metrics, including area under the receiver operating characteristic (AUROC), area under the precision-recall curve (AUPRC) [25], sensitivity, specificity, negative predictive value (NPV), positive predictive (PPV) value, F1 score, and number needed to evaluate (NNE) – or the number of people needed to evaluate to get one person with the true outcome – on the test set and an independent dataset. The optimal threshold for prediction cutoff was chosen to balance sensitivity and specificity as identified by the Youden index [26]. We also report feature importance for the top 20 most important predictors for each model.

Analyses and visualizations were done using Python, version 2.7, with the scikit-learn, numpy, pandas, and seaborn libraries (Python Software Foundation).

## **RESULTS**

## **Descriptive statistics of the case population**

There were 1,767,559 members in the cohort of study; of these, 396,607 (22.4%) had at least one HTN-related complication of any stage. Stage 2 complications were most common with 303,150 members (17.1% of cohort), while stage 1 (99,829) and stage 3 (131,126) were less so (5.6% and 7.4%, respectively). Some members experienced complications from two or all three stages (6.5%) during the prediction window. There was a lower percentage of females (41.3% vs. 49.0%) as well as a higher average age (54.7 vs. 51.6 years old) among those that experienced a HTN-related complication versus those that did not (Figure 2). Because more than half the people who experienced a stage 1 complication also experienced a stage 2 and/or stage 3 complication, and more than a quarter of people who had a stage 2 complication also had a stage 3 complication, the summary statistics for the features below pertain to mutually exclusive roll-up categories where a person was counted for his or her most severe complication stage.

Select diagnosis and prescription features as they relate to HTN complication stages are shown in Figure 3. These were chosen as they are among the top 20 most important features for one or more of the models. Summary statistics of all diagnosis- and prescription-related features are in Tables 1 and 2, respectively. Charlson Comorbidity Index [22], a discrete risk score, increased as complication severity increased (Figure 3B). For diagnosis-related features scored categorically by the presence of at least one code (n=60), all but anxiety disorder and hemochromatosis were proportionally higher in all three of the complication stage groups compared to those that did not have any complications. Thirty-one of these diagnoses increased proportionally with increasing complication severity (Table 1). Discrete prescription features, such as number of different anti-hypertensive classes and number of anti-hypertensive treatment adjustment rounds, positively correlated with complication severity (Figure 3C). For prescription features scored categorically by the presence of at least one code (n=35), 20 were

proportionally higher in all complication stage groups compared to those without any hypertension-related complications. Six prescription predictors decreased with complication severity (Table 2).

Counts of relevant procedure codes (n=6 predictors) and utilization visits and costs (n=5 predictors) were all discrete features, and means and SDs of these predictors by complication stage can be found in Table 3. The mean for all of these features was lowest in the complication group versus all other complication stages. Mean utilization across all categories positively correlated with complication stage severity, as did all procedure code counts except for HbA1c and at home blood pressure monitor (Table 3, Figure 4).

Reducing the overall feature space to two dimensions with principal component analysis for 500 randomly selected cases shows some clustering of no complication cases, with greater spread for stage 2 and stage 3 complications (Supplemental Figure 1).

As some of the complications we are trying to predict, such as chronic kidney disease and dementia, are chronic, we evaluated their presence in our cohort during the intake window and how that may affect model performance. We found that 298,774 (17%) of the cohort had a diagnosis for one of the chronic complication events during the intake year, 216,817 of whom had a complication during the prediction year, accounting for 55% of members of the total cohort that experienced a HTN-related complication during this time. One concern is that the models are benefitting from predicting continued presence of chronic complications; however, not everyone from this group had a complication during the prediction window. Furthermore, models trained on cohorts with and without complication events during the intake window performed less well than when both groups are combined (Supplemental Table S3), so we elected to continue with the latter.

### **Prediction performance of ML algorithms**

After calculating the features and labels, the data were split randomly into train and test sets with stratified sampling. XGBoost models were fitted and tuned on the training data, and the performance evaluated on the test set, summarized in Supplemental Figure 2. On the independent dataset (Supplemental Figure 3), the model to predict stage 2 complications exhibited the best performance across thresholds (AUROC of 0.89, AUPRC of 0.76). The model to predict stage 3 complications was next best (AUROC of 0.87, AUPRC of 0.58), outperforming the model to predict stage 1 complications (AUROC of 0.81, AUPRC of 0.36) (Figure 5).

At the optimized threshold for specificity and sensitivity as determined by the Youden index, the model for stage 1 complications had a specificity of 66.8%, sensitivity of 79.5%, NPV of 97.2%, PPV of 18.4%, F1 score of 0.30, and NNE of 5.5. Meanwhile, the model for stage 2 complications exhibited a specificity of 81.4%, sensitivity of 93.1%, NPV of 92.5%, PPV of 63.4%, F1 score of 0.72, and NNE of 1.6. Finally, the model for stage 3 complications had a specificity of 71.0%, sensitivity of 84.4%, NPV of 96.4%, PPV of 33.2%, F1 score of 0.48, and NNE of 3.0 (Table 4).

Feature importances were extracted from the XGBoost classifier attributes and the top 20 for each model are shown in Figure 6. The top four predictors across models for all three complication stages were total medical cost, medical cost related to hypertension, outpatient visits, and age, although order varied depending on stage. Other features common to all three models were Charlson Comorbidity Index, count of anti-hypertensive drug classes, count of anti-hypertensive drugs, ED visits, IP visits, EKG count, round of treatment changes, and HbA1c count. Meanwhile, serum uric acid count (stages 1 and 2); valvular disorders and anticoagulants (stages 1 and 3); and sex, statins, beta blockers, breathing difficulties, and thiazide diuretics (stages 2 and 3) were common in two of the three models. Uniquely in the top 20 most important features for predicting stage 1 complications was previous stage 2 and stage 3 complications, edema, diabetes, and atherosclerosis. Unique to stage 2's top 20 was

hyperlipidemia and previous stage 1 complications. For stage 3, dizziness was a top 20 predictor not found for the other two models.

## **DISCUSSION**

There is already a substantial body of literature predicting HTN onset (see [27] for a review), but there remains much value to be added from forecasting HTN-related complications, of which there are more limited studies [9-17]. This would serve the substantial already-diagnosed population, and serve to mitigate the HTN morbidity and mortality burden due to complications. While HTN is associated with major complications such as chronic kidney disease, heart failure, and stroke [28-30], one area that has not been explored to our knowledge is algorithms to predict earlier stage complications. These subtler, sometimes non-specific symptoms, such as microalbuminuria and cognitive dysfunction, may not be recognized as signs of HTN progression like the later stage major complications will be, and yet it is a more effective time to intervene and review treatment and management options.

### **Findings**

To the above end, we built three separate models to predict different stages of complications that reflect the severity of HTN progression across the target organs of brain, heart, and kidney. On a large commercial population of medical and pharmacy administrative data, we identified prevalence rates of 6%, 17%, and 7%, for stage 1, stage 2, and stage 3 complications, respectively. We trained three XGBoost classifiers using 112 features to predict these different complication stages and found they performed as well or better on an independent dataset than previously published models by AUROC in predicting outcomes most similar to our stage 2 and stage 3 composites [9-13, 15, 17]. The precision or PPV of the models for stages 1 and 3 is low at the threshold chosen to optimize specificity and sensitivity, and could be improved by adjusting the threshold at the sacrifice of other metrics. PPV will

always be inherently low for imbalanced datasets, but the NNE of 5.5 and 3.0 for these models is encouraging from an implementation perspective as they reflect a low number of people needed to evaluate to detect one outcome [31].

When looking at the most important features for these models, we found that all five utilization calculated pertaining to cost and visit types (IP, ED, OP) were in the top 20 across models, perhaps because they are good proxies for overall health status. Diagnosis-related features seemed more important in discriminating stage 1 complications (7 features in top 20) than for stage 2 and stage 3 complications (4 features each in the top 20). Conversely, predictors related to medications featured more heavily in the top 20 for stage 2 and stage 3 models (6 and 7 predictors, respectively) than for stage 1 (4 predictors in top 20). A feature to incorporate in the future for all of these models is to look at medication adherence, which has previously been found to increase odds of HTN complications (ischemic heart disease and cerebrovascular disease) [32].

### **Care management use cases**

Care management for HTN involves educational programs encouraging self-management, including checking blood pressure regularly, understanding the importance of medication adherence even in the absence of symptoms, managing weight and diet, and recognizing signs indicative of HTN-related complications. Should a member become unstable, care managers can coordinate with physicians to schedule appointments, adjust medications, and recommend further lifestyle modifications. Because of the time needed to assess each patient's unique case, identify and eliminate his or her barriers to care, organize education and resources, and build a trusting relationship, care management assets must be allocated wisely.

Because the number of people with HTN is large and likelihood for HTN-related disease exacerbation is variable, these models can be leveraged to help identify and stratify risk for individuals

of a HTN population for care management. People can be rank-sorted by the algorithms' prediction probability for each complication stage and integrated with other clinical information to assess overall acuity. These predicted complication probabilities could add additional layers for prioritization of outreach in terms of surfacing unique members that may be lower risk by other assessments. The models can also identify patients without previous complication events. Stratification of care management resources could include identifying candidates for remote monitoring programs at home [33, 34], and designating outreach resources ranging from digital strategies to personalized contact with a population health consultant, an engagement specialist, or a clinician. In this way, leveraging these predicative models can help improve the financial and health outcomes impact of care management.

### **Limitations**

In addition to prevalence issues, part of improving the performance of the stage 1 complication model could entail specialized cohort selection. These models, which were intended to be applied to a hypertension population at large, utilized cohort selection criteria that would have included people at any stage of HTN progression. Since 58% of people that experienced a stage 1 complication also experienced a stage 2 and/or stage 3 complication, the model to predict these early complications is not necessarily fine-tuned to identify progression to these early signs and symptoms. In fact, the presence of stage 1 complications could be continued reporting of these symptoms as people progress to stages 2 and 3. Future iterations of the model will include longer longitudinal data to ensure selection of newly diagnosed HTN patients to improve stage 1 complication detection.

Another limitation of this study is that outside of the diagnoses codes pertaining specifically to hypertension complications (hypertensive heart disease, hypertensive retinopathy, and hypertensive kidney disease), other complication labels selected as part of the composite outcomes cannot necessarily be attributed directly to a person's hypertension using only administrative data. While using

only claims data could be another limitation, even in a clinical setting, determining whether one's heart attack was due to hypertension or hyperlipidemia or any other combination of factors is not always possible, and why these comorbidities were included as features for prediction. We maintain these models predict risk of events, and their relation to hypertension is important.

## **CONCLUSION**

Hypertension is a highly prevalent chronic disease, which left unmanaged can progress through increasingly severe complication outcomes, resulting in significant morbidity and mortality. We developed algorithms that could accurately predict different stages of HTN-related complications, grouped by severity level. The ability to predict severity of these outcomes rather than a single composite as most previous models have done allows for more nuanced use cases when these algorithms are utilized in clinical settings.

## **ACKNOWLEDGMENTS**

The authors thank Andrew Fairless, Mackenzie DeBoer, and Cindy Meck for helpful discussion.

## **COMPETING INTERESTS**

All authors are employees of Geneia LLC.

## **DATA AVAILABILITY**

The data used for this manuscript are commercially licensed from the CCAE database and not publically available. The independent dataset contains sensitive personal health information and is therefore also not publically available.



## TABLES AND FIGURES

	<u>No Complications</u>		<u>Stage 1 Complications</u>		<u>Stage 2 Complications</u>		<u>Stage 3 Complications</u>	
	N	%	N	%	N	%	N	%
Total	1,370,952	100	41,956	100	223,525	100	131,126	100
Alcohol abuse	16,917	1.2	574	1.4	3,504	1.6	2,902	2.2
Amyloidosis	239	0.0	15	0.0	93	0.0	135	0.1
Anemia	66,306	4.8	3,337	8.0	19,293	8.6	16,479	12.6
Aneurysm	6,100	0.4	593	1.4	4,000	1.8	3,392	2.6
Angina	9,810	0.7	455	1.1	12,593	5.6	7,016	5.4
Anxiety disorder	184,467	13.5	5,336	12.7	28,377	12.7	19,686	15.0
Arterial dissection	389	0.0	22	0.1	166	0.1	353	0.3
Atherosclerosis	9,368	0.7	2,417	5.8	8,263	3.7	7,532	5.7
Atrial fibrillation	6,453	0.5	259	0.6	26,320	11.8	15,139	11.5
Breathing difficulties	130,555	9.5	6,175	14.7	43,155	19.3	37,101	28.3
Cardiomyopathy	3,283	0.2	211	0.5	2,617	1.2	20,335	15.5
Cardiovascular disease	35,115	2.6	1,755	4.2	81,314	36.4	40,488	30.9
CCI, mean (SD)	0.7	(1.2)	1.4	(1.7)	1.6	(1.9)	2.3	(2.3)
Chronic kidney disease	13,926	1.0	1,118	2.7	34,209	15.3	18,219	13.9
Congenital heart defects	4,006	0.3	330	0.8	2,130	1.0	2,206	1.7
COPD	144,678	10.6	5,858	14.0	31,518	14.1	24,745	18.9
Coronary artery disease	23,120	1.7	1,189	2.8	74,911	33.5	34,880	26.6
Diabetes	324,832	23.7	17,060	40.7	79,750	35.7	50,041	38.2
Dizziness	92,532	6.7	3,936	9.4	24,779	11.1	22,668	17.3
Drug use	15,563	1.1	535	1.3	3,484	1.6	2,959	2.3
Edema	52,900	3.9	2,817	6.7	15,229	6.8	13,910	10.6
Electrolyte imbalance	49,444	3.6	2,467	5.9	15,412	6.9	16,402	12.5
Embolism	18,113	1.3	1,097	2.6	7,177	3.2	6,755	5.2
Fatty liver	43,063	3.1	1,913	4.6	9,086	4.1	5,639	4.3
Glomerulonephritis	1,731	0.1	479	1.1	2,621	1.2	1,857	1.4
Gout	38,489	2.8	1,423	3.4	10,773	4.8	6,220	4.7
Heart attack	2,437	0.2	120	0.3	6,397	2.9	7,928	6.0
Heart failure	5,942	0.4	467	1.1	5,146	2.3	25,011	19.1
Hemochromatosis	2,685	0.2	82	0.2	555	0.2	380	0.3
Hemolysis	211	0.0	9	0.0	83	0.0	121	0.1
Hyperlipidemia	749,727	54.7	26,734	63.7	166,048	74.3	92,899	70.8
Ischemic cardiomyopathy	411	0.0	20	0.0	2,414	1.1	4,739	3.6
Kidney cancer	2,411	0.2	140	0.3	1,387	0.6	736	0.6
Kidney infarction	153	0.0	19	0.0	98	0.0	106	0.1
Kidney stones	37,068	2.7	1,657	3.9	10,162	4.5	5,557	4.2
Left ventricular hypertrophy	15,268	1.1	2,769	6.6	9,208	4.1	13,215	10.1
Lung disease	572,315	41.7	19,491	46.5	100,830	45.1	66,791	50.9
Lupus	5,704	0.4	565	1.3	2,058	0.9	1,505	1.1
Mood disorder	147,162	10.7	4,712	11.2	24,613	11.0	17,896	13.6
Myocarditis	112	0.0	7	0.0	38	0.0	126	0.1
Nicotine use	105,604	7.7	3,923	9.4	26,750	12.0	19,183	14.6
Nutritional deficiencies	216,138	15.8	8,823	21.0	42,806	19.2	26,241	20.0
Obesity	288,107	21.0	11,176	26.6	55,485	24.8	35,526	27.1
Pericardial effusion	1,135	0.1	108	0.3	811	0.4	1,388	1.1
Periodontal disease	995	0.1	47	0.1	206	0.1	144	0.1
Polycystic kidney disease	2,686	0.2	162	0.4	1,903	0.9	1,109	0.8
Pulmonary hypertension	3,416	0.2	338	0.8	1,972	0.9	4,067	3.1
Renal dysfunction	26,951	2.0	1,767	4.2	13,462	6.0	12,753	9.7
Renal sclerosis	953	0.1	279	0.7	768	0.3	819	0.6
Renal structural abnormalities	172	0.0	26	0.1	163	0.1	99	0.1
Rheumatoid arthritis	19,875	1.4	928	2.2	4,815	2.2	3,299	2.5
Sarcoidosis	3,603	0.3	202	0.5	963	0.4	878	0.7
Sick sinus	1,391	0.1	67	0.2	1,787	0.8	1,693	1.3
Sleep disorder	232,941	17.0	8,813	21.0	52,839	23.6	35,515	27.1
Stage 1 complication (previous)	38,774	2.8	13,355	31.8	27,432	12.3	24,505	18.7
Stage 2 complication (previous)	81,649	6.0	4,472	10.7	151,273	67.7	66,790	50.9
Stage 3 complication (previous)	36,134	2.6	2,161	5.2	24,613	11.0	68,829	52.5
Tachycardia	24,916	1.8	1,054	2.5	6,999	3.1	6,919	5.3
Thyroid disorder	213,054	15.5	7,578	18.1	39,218	17.5	25,608	19.5
Valve disorder	34,748	2.5	2,639	6.3	19,083	8.5	20,260	15.5
Vasculitis	937	0.1	59	0.1	393	0.2	347	0.3

**Table 1.** Diagnosis-related features for four groups: those that experienced no hypertension-related complications, stage 1, stage 2, or stage 3 complications. Member counts and proportions for people in each group are shown for most features, scored as presence or absence of at least one code, unless the feature is discrete, in which case mean and standard deviation are presented. CCI, Charlson Comorbidity Index; COPD, chronic obstructive pulmonary disease; SD, standard deviation.

	No Complications		Stage 1 Complication		Stage 2 Complication		Stage 3 Complication	
	N	%	N	%	N	%	N	%
Total	1,370,952	100	41,956	100	223,525	100	131,126	100
ACE/ARB	936,143	68.3	30,750	73.3	156,592	70.1	91,565	69.8
ACE/ARB only	304,165	22.2	8,554	20.4	29,172	13.1	13,185	10.1
Anti-adrenergics	37,652	2.7	2,064	4.9	12,224	5.5	12,471	9.5
Anti-adrenergics only	3,365	0.2	89	0.2	315	0.1	241	0.2
Anticoagulants	45,699	3.3	2,433	5.8	55,357	24.8	36,144	27.6
Anti-hypertensive class count, mean (SD)	1.7	(1.0)	1.9	(1.1)	2.0	(1.1)	2.2	(1.2)
Anti-hypertensive type count, mean (SD)	1.7	(1.1)	1.9	(1.2)	2.1	(1.2)	2.2	(1.4)
Anti-hypertensive types - dual therapy	469,607	34.3	13,539	32.3	74,251	33.2	40,725	31.1
Anti-hypertensive types - monotherapy	500,500	36.5	13,249	31.6	61,739	27.6	30,688	23.4
Anti-hypertensive types - polytherapy	276,604	20.2	11,719	27.9	70,968	31.7	49,479	37.7
Aspirin	24,980	1.8	1,429	3.4	37,823	16.9	23,317	17.8
Beta blockers	348,493	25.4	12,835	30.6	115,874	51.8	76,909	58.7
Beta blockers only	85,039	6.2	1,941	4.6	20,768	9.3	10,037	7.7
Ca channel blockers	359,827	26.2	13,858	33.0	73,141	32.7	44,267	33.8
Ca channel blockers + ACE/ARB combo	239,059	17.4	10,215	24.3	53,147	23.8	31,658	24.1
Ca channel blockers only	62,952	4.6	1,650	3.9	7,223	3.2	3,549	2.7
Diuretics	620,183	45.2	19,734	47.0	93,836	42.0	65,100	49.6
Diuretics only	71,943	5.2	1,499	3.6	4,704	2.1	2,997	2.3
Meds interfering with anti-hypertensives	607,320	44.3	20,587	49.1	103,251	46.2	62,874	47.9
Metformin	243,835	17.8	12,269	29.2	50,932	22.8	27,248	20.8
No anti-hypertensive meds	103,649	7.6	2,689	6.4	12,691	5.7	7,417	5.7
NSAID	375,651	27.4	12,875	30.7	59,838	26.8	34,562	26.4
Oral contraceptives	59,036	4.3	1,354	3.2	4,020	1.8	2,710	2.1
Progressed to anti-HTN meds before 2016	1,016,718	74.2	32,393	77.2	176,985	79.2	102,279	78.0
Progressed to anti-HTN meds in 2016	109,019	8.0	2,836	6.8	12,609	5.6	8,066	6.2
Progressor status unknown	245,215	17.9	6,727	16.0	33,931	15.2	20,781	15.8
Refractory HTN	5,653	0.4	509	1.2	3,558	1.6	3,891	3.0
Resistant HTN	244,403	17.8	10,935	26.1	69,768	31.2	52,287	39.9
ROTO = 1	866,770	63.2	23,093	55.0	106,513	47.7	54,022	41.2
ROTO = 2	299,919	21.9	11,035	26.3	69,450	31.1	41,276	31.5
ROTO ≥ 3	80,022	5.8	4,379	10.4	30,995	13.9	25,594	19.5
ROTO, mean (SD)	1.3	(0.7)	1.4	(0.9)	1.6	(0.9)	1.7	(1.1)
Statins	532,174	38.8	20,171	48.1	141,506	63.3	78,458	59.8
Steroids	396,730	28.9	13,785	32.9	73,061	32.7	46,318	35.3
Thiazide diuretics	553,945	40.4	16,750	39.9	72,761	32.6	37,667	28.7
Vasodilators	5,900	0.4	259	0.6	2,874	1.3	1,520	1.2
Vasodilators only	505	0.0	20	0.0	129	0.1	70	0.1
Vitamin K antagonists	7,743	0.6	462	1.1	6,309	2.8	6,649	5.1

**Table 2.** Predictors pertaining to pharmacy claim data. An anti-hypertensive “type” refers to its 5 digit ATC4 hierarchy code, whereas “class” refers more broadly to beta blockers, diuretics, calcium channel blockers, etc., or its 3 digit ATC4 hierarchy code. Predictors are scored categorically and presented as proportions of total number of members in that complication class, unless denoted with “mean (SD),” in which case they are discrete features and summary statistics of mean and SD are reported.

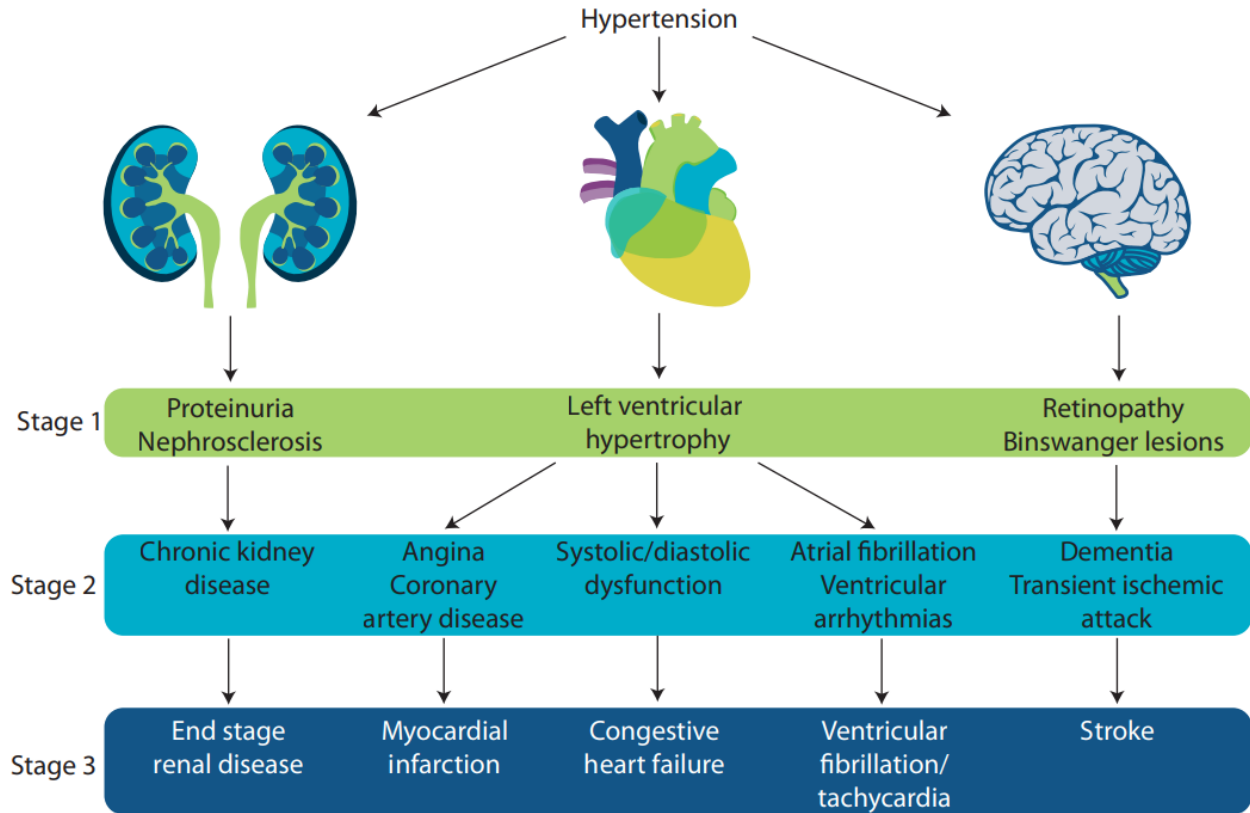
Abbreviations: ACE, angiotensin converting enzyme inhibitor; ARB, angiotensin II receptor blocker; Ca, calcium; HTN, hypertension; NSAID, nonsteroidal anti-inflammatory drug; ROTO, rounds of treatment options; SD, standard deviation.

	<u>No Complications</u>		<u>Stage 1 Complications</u>		<u>Stage 2 Complications</u>		<u>Stage 3 Complications</u>	
	Mean	SD	Mean	SD	Mean	SD	Mean	SD
At home BP monitor	0.0	0.1	0.0	0.1	0.0	0.1	0.0	0.1
Creatinine	0.1	0.4	0.1	0.6	0.1	0.6	0.2	1.0
EKG	0.5	1.0	0.8	1.3	1.3	2.1	1.9	2.9
HbA1c	0.7	1.1	1.2	1.4	1.0	1.3	1.1	1.4
Heart surgery	0.0	0.1	0.0	0.2	0.0	0.3	0.1	0.5
Serum uric acid	0.1	0.5	0.2	0.7	0.2	0.8	0.2	0.9
ED visits	2.3	4.6	3.2	6.0	3.8	6.8	5.7	10.6
IP visits	0.3	2.1	0.5	3.5	0.8	4.1	2.2	8.0
OP visits	11.2	11.6	14.8	13.8	15.5	14.5	21.0	27.0
Pay related to HTN	340.41	182-767	461.43	234-1230	528.95	247-1717	699.43	283-2824
Total medical pay	1979.16	753-5704	3254.31	1250-9083	4133.37	1436-12,990	6772.36	2157-25,654

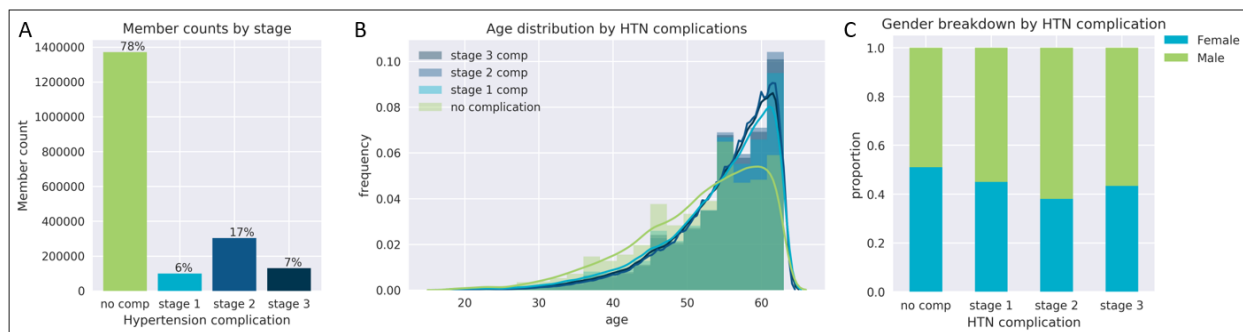
**Table 3.** Features related to utilization and procedure counts. For each complication group, mean and standard deviation are reported, except for pay features, where median and interquartile range are reported. For the procedures and visit types listed, unique claim dates were counted per person during the intake window. BP, blood pressure; EKG, electrocardiogram; HbA1c, hemoglobin A1c; ED, emergency department; IP, inpatient; OP, outpatient; HTN, hypertension.

	Stage 1 Complications	Stage 2 Complications	Stage 3 Complications
Specificity	0.668	0.814	0.710
Sensitivity	0.795	0.831	0.844
NPV	0.972	0.925	0.964
PPV	0.184	0.634	0.322
F1 score	0.298	0.719	0.476
NNE	5.445	1.576	3.014

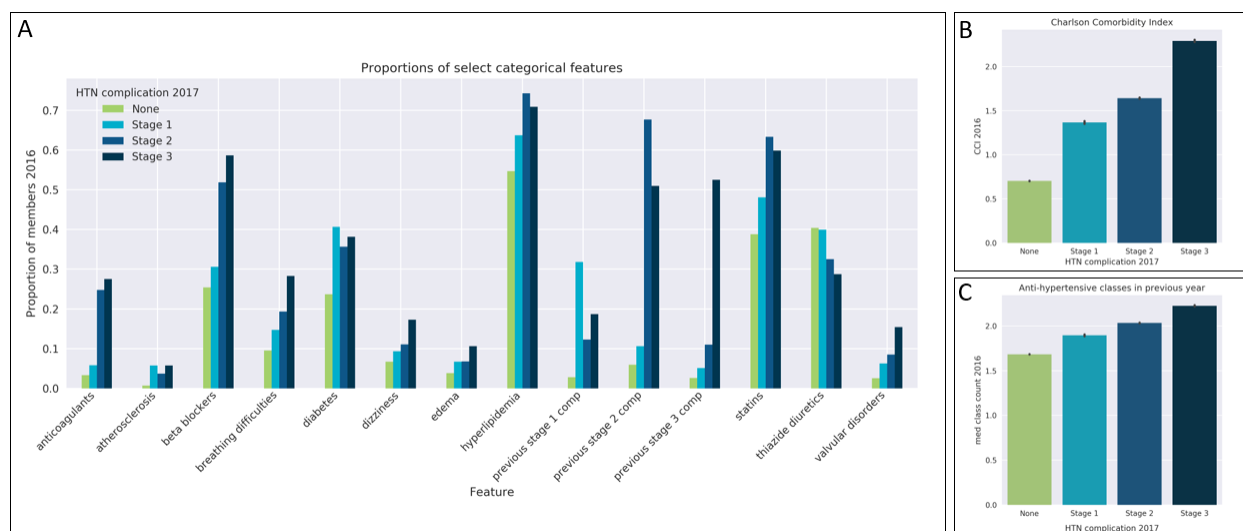
**Table 4.** Model performance metrics on independent dataset. Numbers calculated based on threshold cutoffs to optimize specificity and sensitivity on training data. NNE, number needed to evaluate; NPV, negative predictive value; PPV, positive predictive value.



**Figure 1.** Hypertension complications. Target organs affected are kidney, heart, and brain. Complications progress with increasing severity and can ultimately result in mortality. Adapted from [18].

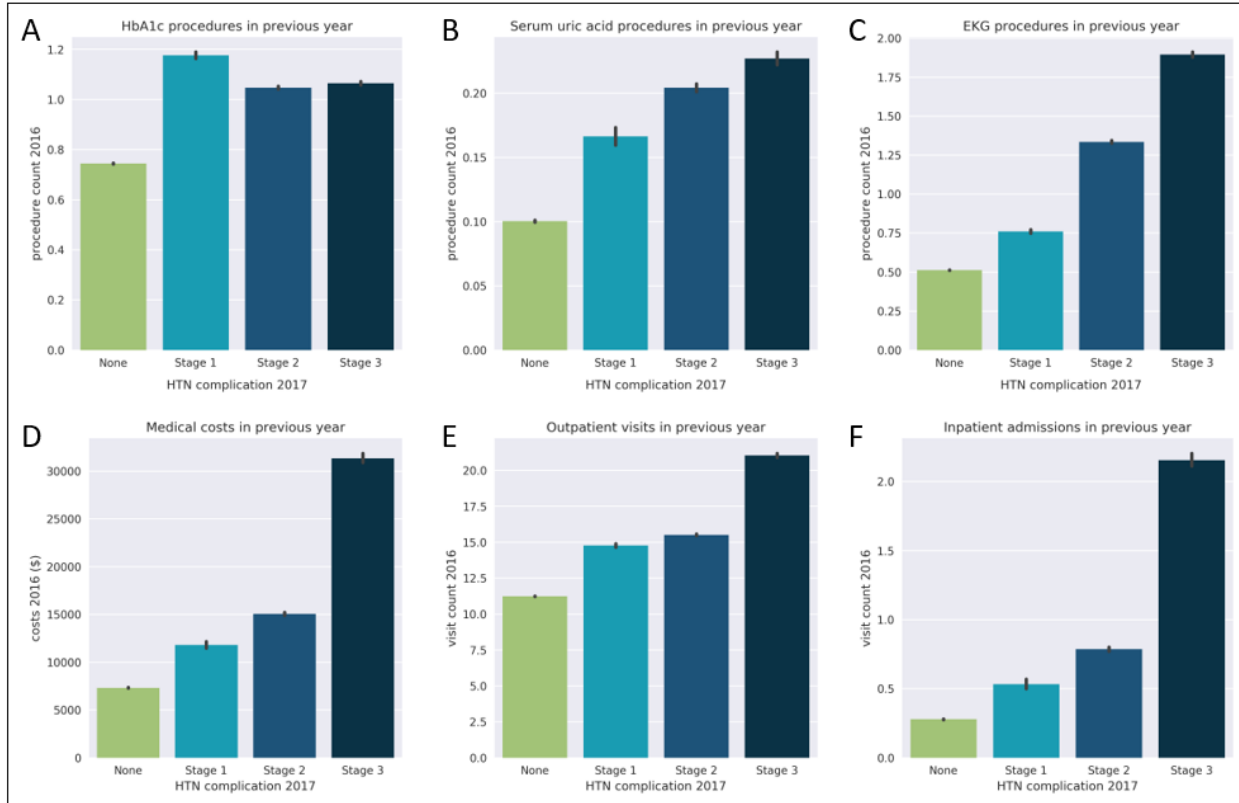


**Figure 2.** Hypertension complication prevalence and demographic summary. (A) Member counts by complication stage during prediction window. Members can experience complications from multiple stages, but are only counted as ‘no complication’ status if they do not experience complications of any stage. (B) Distribution of ages by complication status shows people that do not experience a complication tend to be slightly younger. This study design did not include people below the age of 18, and because it utilized administrative data from commercially insured individuals, does not include anyone over the age of 65. (C) Proportion of males and females by complication status shows roughly equal percentages of both sexes in the no complication group, but higher proportions of males in all three complication stage groups. Comp, complications; HTN, hypertension.

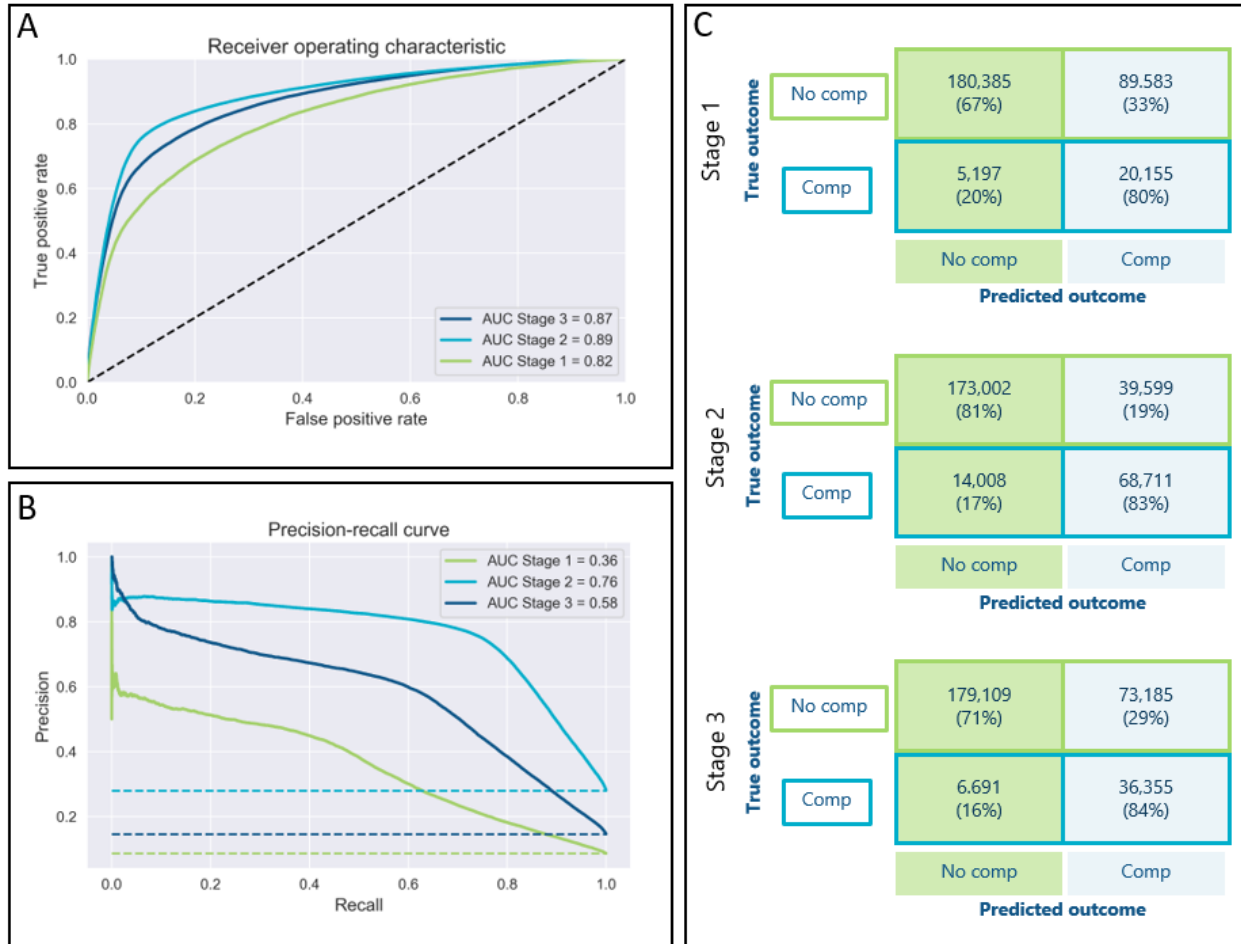


**Figure 3.** Selected diagnosis and medication features. (A) Features during intake year (2016) shown as proportion of members in each group with the presence of at least one diagnosis or drug code belonging to that category. A person is grouped according to his or her most severe complication stage experienced in 2017. (B) The Charlson Comorbidity Index, a composite weighted risk score of 19 different chronic diseases, increases with increasing complication severity. (C) The count of different anti-hypertensive drug classes (diuretics, calcium channel blockers, agents acting on the renin-angiotensin system, beta blockers, vasodilators, and adrenergic antagonists) increases with increasing complication severity. Bars represent 95% confidence intervals.

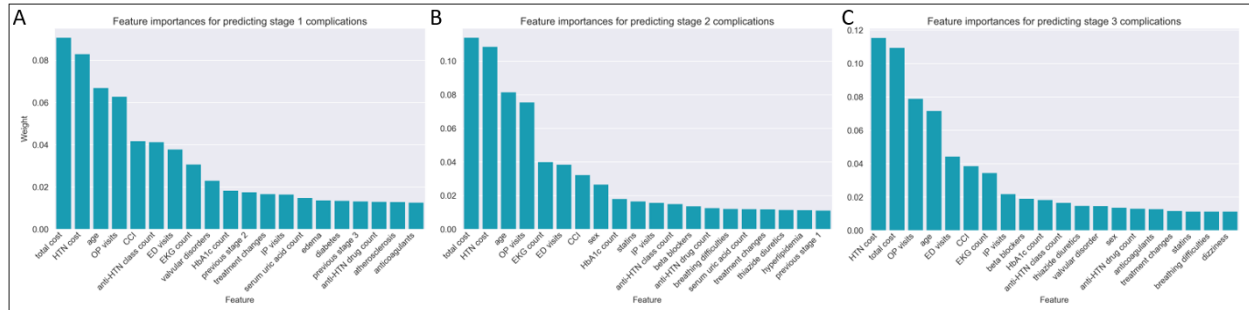




**Figure 4.** Selected procedure and utilization features. A person is grouped according to his or her most severe complication stage experienced in 2017. (A) Count of procedures for hemoglobin-A1c tests is higher if HTN-related complications experienced in the following year, particularly stage 1 complications. (B-C) Count of procedures for serum uric acid and electrocardiogram procedures increase with increasing complication severity. (D) Total medical spending in previous year increases with complication severity the follow year, particularly for stage 3 complications. (E-F) Number of outpatient visits and inpatient admissions, counted by unique dates of service per member, also increase as HTN-related complications become more serious. Bars represent 95% confidence intervals.



**Figure 5.** Model performance metrics on independent dataset. (A) Receiving operating characteristic and (B) precision-recall curves for models predicting stage 1, stage 2, and stage 3 complications across thresholds. Dashed lines indicate baseline random guess performance. (C) Confusion matrices based on optimized threshold cutoffs for stage 1, stage 2, and stage 3 models. AUC, area under curve; comp, complication.



**Figure 6.** Top 20 most important features for predicting (A) stage 1, (B) stage 2, and (C) stage 3 complications. CCI, Charlson Comorbidity Index; ED, emergency department; EKG, electrocardiogram; HbA1c, hemoglobin A1c; HTN, hypertension; IP, inpatient; OP, outpatient.

## REFERENCES

1. Mills, K.T., A. Stefanescu, and J. He, *The global epidemiology of hypertension*. *Nat Rev Nephrol*, 2020. **16**(4): p. 223-237.
2. Dorans, K.S., et al., *Trends in Prevalence and Control of Hypertension According to the 2017 American College of Cardiology/American Heart Association (ACC/AHA) Guideline*. *J Am Heart Assoc*, 2018. **7**(11).
3. GBD 2015 Disease and Injury Incidence and Prevalence Collaborators, *Global, regional, and national incidence, prevalence, and years lived with disability for 310 diseases and injuries, 1990-2015: a systematic analysis for the Global Burden of Disease Study 2015*. *Lancet*, 2016. **388**(10053): p. 1545-1602.
4. Benjamin, E.J., et al., *Heart Disease and Stroke Statistics-2018 Update: A Report From the American Heart Association*. *Circulation*, 2018. **137**(12): p. e67-e492.
5. Mennuni, S., et al., *Hypertension and kidneys: unraveling complex molecular mechanisms underlying hypertensive renal damage*. *J Hum Hypertens*, 2014. **28**(2): p. 74-9.
6. Patel, S.A., et al., *Cardiovascular mortality associated with 5 leading risk factors: national and state preventable fractions estimated from survey data*. *Ann Intern Med*, 2015. **163**(4): p. 245-53.
7. O'Donnell, M.J., et al., *Global and regional effects of potentially modifiable risk factors associated with acute stroke in 32 countries (INTERSTROKE): a case-control study*. *Lancet*, 2016. **388**(10046): p. 761-75.
8. US Renal Data System, *USRDS 2009 Annual Data Report: Atlas of chronic kidney disease and end-stage renal disease in the United States*. 2009, National Institutes of Health, National Institute of Diabetes and Digestive and Kidney Diseases: Bethesda, MD, USA.
9. Chen, R., et al., *3-year risk prediction of Coronary Heart Disease in hypertension patients: A preliminary study*. *Conf Proc IEEE Eng Med Biol Soc*, 2017. **2017**: p. 1182-1185.
10. de Simone, G., et al., *Does information on systolic and diastolic function improve prediction of a cardiovascular event by left ventricular hypertrophy in arterial hypertension?* *Hypertension*, 2010. **56**(1): p. 99-104.
11. Lacson, R.C., et al., *Use of machine-learning algorithms to determine features of systolic blood pressure variability that predict poor outcomes in hypertensive patients*. *Clin Kidney J*, 2019. **12**(2): p. 206-212.
12. Lee, W., et al., *Prediction of hypertension complications risk using classification techniques*. *Industrial Engineering & Management Systems*, 2014. **13**(4): p. 449-453.
13. Mehta, H.B., et al., *Development and Validation of the RxDx-Dementia Risk Index to Predict Dementia in Patients with Type 2 Diabetes and Hypertension*. *J Alzheimers Dis*, 2016. **49**(2): p. 423-32.
14. Park, J., et al., *Patient-Level Prediction of Cardio-Cerebrovascular Events in Hypertension Using Nationwide Claims Data*. *J Med Internet Res*, 2019. **21**(2): p. e11757.
15. Prieto-Merino, D., et al., *ASCORE: an up-to-date cardiovascular risk score for hypertensive patients reflecting contemporary clinical practice developed using the (ASCOT-BPLA) trial data*. *J Hum Hypertens*, 2013. **27**(8): p. 492-6.
16. Ren, Y., et al., *A hybrid neural network model for predicting kidney disease in hypertension patients based on electronic health records*. *BMC Med Inform Decis Mak*, 2019. **19**(Suppl 2): p. 51.
17. Wu, X., et al., *Value of a Machine Learning Approach for Predicting Clinical Outcomes in Young Patients With Hypertension*. *Hypertension*, 2020. **75**(5): p. 1271-1278.

18. Messerli, F.H., B. Williams, and E. Ritz, *Essential hypertension*. Lancet, 2007. **370**(9587): p. 591-603.
19. Nadler, D.L. and A. Poppas, *Can early management of hypertension by general practitioners improve outcome?* US Cardiology Review, 2019. **13**(1): p. 58-60.
20. World Health Organization, *ICD-10: international statistical classification of diseases and related health problems*. 2 ed. Vol. Tenth revision. 2004: World Health Organization.
21. Bandhakavi, S., et al., *Real world hypertension treatment patterns analysis identifies putative gaps and risk-associated patterns*. Manuscript in preparation, 2020.
22. Quan, H., et al., *Coding algorithms for defining comorbidities in ICD-9-CM and ICD-10 administrative data*. Med Care, 2005. **43**(11): p. 1130-9.
23. Hwang, A.Y., C.V. Dave, and S.M. Smith, *Use of Prescription Medications That Potentially Interfere With Blood Pressure Control in New-Onset Hypertension and Treatment-Resistant Hypertension*. Am J Hypertens, 2018. **31**(12): p. 1324-1331.
24. Chen, T. and C. Guestrin, *XGBoost: A Scalable Tree Boosting System*. KDD '16: Proceedings of the 22nd ACM SIGKDD international conference on knowledge discovery and data mining, 2016. **August 2016**: p. 785-794.
25. Saito, T. and M. Rehmsmeier, *The precision-recall plot is more informative than the ROC plot when evaluating binary classifiers on imbalanced datasets*. PLoS One, 2015. **10**(3): p. e0118432.
26. Fluss, R., D. Faraggi, and B. Reiser, *Estimation of the Youden Index and its associated cutoff point*. Biom J, 2005. **47**(4): p. 458-72.
27. Krittanawong, C., et al., *Future Direction for Using Artificial Intelligence to Predict and Manage Hypertension*. Curr Hypertens Rep, 2018. **20**(9): p. 75.
28. Cipolla, M.J., D.S. Liebeskind, and S.L. Chan, *The importance of comorbidities in ischemic stroke: Impact of hypertension on the cerebral circulation*. J Cereb Blood Flow Metab, 2018. **38**(12): p. 2129-2149.
29. Mahmoodi, B.K., et al., *Associations of kidney disease measures with mortality and end-stage renal disease in individuals with and without hypertension: a meta-analysis*. Lancet, 2012. **380**(9854): p. 1649-61.
30. Slivnick, J. and B.C. Lampert, *Hypertension and Heart Failure*. Heart Fail Clin, 2019. **15**(4): p. 531-541.
31. Romero-Brufau, S., et al., *Why the C-statistic is not informative to evaluate early warning scores and what metrics to use*. Crit Care, 2015. **19**: p. 285.
32. Kim, H.J., et al., *Medication Adherence and the Occurrence of Complications in Patients with Newly Diagnosed Hypertension*. Korean Circ J, 2016. **46**(3): p. 384-93.
33. Fisher, N.D.L., et al., *Development of an entirely remote, non-physician led hypertension management program*. Clin Cardiol, 2019. **42**(2): p. 285-291.
34. Kim, Y.N., et al., *Randomized clinical trial to assess the effectiveness of remote patient monitoring and physician care in reducing office blood pressure*. Hypertens Res, 2015. **38**(7): p. 491-7.

## SUPPLEMENTARY MATERIAL

Supplementary Table S1: HT diagnosis codes and HT medications

Code type	Code	Description
ICD-10-CM	I10	Essential (primary) hypertension
ICD-10-CM	I110	Hypertensive heart disease with heart failure
ICD-10-CM	I119	Hypertensive heart disease without heart failure
ICD-10-CM	I120	Hypertensive chronic kidney disease with stage 5 chronic kidney disease or end stage renal disease
ICD-10-CM	I129	Hypertensive chronic kidney disease with stage 1 through stage 4 chronic kidney disease, or unspecified chronic kidney disease
ICD-10-CM	I130	Hypertensive heart and chronic kidney disease with heart failure and stage 1 through stage 4 chronic kidney disease, or unspecified chronic kidney disease
ICD-10-CM	I1310	Hypertensive heart and chronic kidney disease without heart failure, with stage 1 through stage 4 chronic kidney disease, or unspecified chronic kidney disease
ICD-10-CM	I1311	Hypertensive heart and chronic kidney disease without heart failure, with stage 5 chronic kidney disease, or end stage renal disease
ICD-10-CM	I132	Hypertensive heart and chronic kidney disease with heart failure and with stage 5 chronic kidney disease, or end stage renal disease
ICD-10-CM	I150	Renovascular hypertension
ICD-10-CM	I151	Hypertension secondary to other renal disorders
ICD-10-CM	I152	Hypertension secondary to endocrine disorders
ICD-10-CM	I158	Other secondary hypertension
ICD-10-CM	I159	Secondary hypertension, unspecified
ICD-10-CM	I160	Hypertensive urgency
ICD-10-CM	I161	Hypertensive emergency
ICD-10-CM	I169	Hypertensive crisis, unspecified
ATC	C02	Antihypertensives
ATC	C03	Diuretics
ATC	C04	Peripheral vasodilators
ATC	C07	Beta blocking agents
ATC	C08	Calcium channel blockers
ATC	C09	Agents acting on the renin-angiotensin system

Supplementary Table S2: Complication diagnosis codes

Stage	Target organ	Broad category	ICD-10-CM code	Description		
Stage 1	Kidney	Proteinuria	R800	Isolated proteinuria		
			R801	Persistent proteinuria, unspecified		
			R802	Orthostatic proteinuria, unspecified		
			R803	Bence Jones proteinuria		
			R808	Other proteinuria		
			R809	Proteinuria, unspecified		
		Nephrosclerosis	N269	Renal sclerosis, unspecified		
		I701	Atherosclerosis of renal artery			
	Heart	LVH	I517	Cardiomegaly		
		Atherosclerosis	I70_	Atherosclerosis		
	Brain	Retinopathy	H35031	Hypertensive retinopathy, right eye		
			H35032	Hypertensive retinopathy, left eye		
			H35033	Hypertensive retinopathy, bilateral		
			H35039	Hypertensive retinopathy, unspecified eye		
		Binswanger lesions	I673	Progressive vascular leukoencephalopathy		
	Stage 2	Kidney	Chronic kidney disease	N181	Chronic kidney disease, stage 1	
				N182	Chronic kidney disease, stage 2 (mild)	
N183				Chronic kidney disease, stage 3 (moderate)		
N184				Chronic kidney disease, stage 4 (severe)		
N19				Unspecified kidney failure		
I129				Hypertensive chronic kidney disease, stage 1-4 or unspecified		
I1310				Hypertensive heart and chronic kidney disease without heart failure with stage 1 through stage 4 chronic kidney disease, or unspecified chronic kidney disease		
Heart		Angina	I200	Unstable angina		
			I201	Angina pectoris with documented spasm		
			I208	Other forms of angina pectoris		
			I209	Angina pectoris, unspecified		
			I2510	Atherosclerotic heart disease of native coronary artery without angina pectoris		
		CAD	I25110	Atherosclerotic heart disease of native coronary artery with unstable angina pectoris		
			I25111	Atherosclerotic heart disease of native coronary artery with angina pectoris with documented spasm		
			I25118	Atherosclerotic heart disease of native coronary artery with other forms of angina pectoris		
			I25119	Atherosclerotic heart disease of native coronary artery with unspecified angina pectoris		
			I739	Peripheral vascular disease, unspecified		
			I119	Hypertensive heart disease without heart failure		
			Atrial fibrillation	I480	Paroxysmal atrial fibrillation	
		I481		Persistent atrial fibrillation		
		I482		Chronic atrial fibrillation		
		I483		Typical atrial flutter		
		I484		Atypical atrial flutter		
		I4891		Unspecified atrial fibrillation		
		I4892		Unspecified atrial flutter		
		Other arrhythmias	I498	Other specified cardiac arrhythmias		
			I499	Cardiac arrhythmia, unspecified		
Brain		TIA	G450	Vertebro-basilar artery syndrome		
			G451	Carotid artery syndrome (hemispheric)		
			G452	Multiple and bilateral precerebral artery syndromes		
			G453	Amaurosis fugax		
			G454	Transient global amnesia		
			G458	Other transient cerebral ischemic attacks and related syndromes		
			G459	Transient cerebral ischemic attack, unspecified		
			Dementia	F0150	Vascular dementia without behavioral disturbance	
		F0151		Vascular dementia with behavioral disturbance		
		Stage 3	Kidney	ESRD	N185	Chronic kidney disease, stage 5
					N186	End stage renal disease

			I120	Hypertensive chronic kidney disease, stage 5 or ESRD	
			I1311	Hypertensive heart and chronic kidney disease without heart failure with stage 5 chronic kidney disease or end stage renal disease	
			I132	Hypertensive heart and chronic kidney disease with heart failure with stage 5 chronic kidney disease or end stage renal disease	
		Heart	Ventricular arrhythmias	I4901	Ventricular fibrillation and flutter
				I4902	Ventricular flutter
				I491	Atrial premature depolarization
				I492	Junctional premature depolarization
				I493	Ventricular premature depolarization
				I4940	Unspecified premature depolarization
				I4949	Other premature depolarization
				Myocardial infarction	I2101
		I2102	ST elevation (STEMI) myocardial infarction involving left anterior descending coronary artery		
		I2109	ST elevation (STEMI) myocardial infarction involving other coronary artery of anterior wall		
		I2111	ST elevation (STEMI) myocardial infarction involving right coronary artery		
		I2119	ST elevation (STEMI) myocardial infarction involving other coronary artery of inferior wall		
		I2121	ST elevation (STEMI) myocardial infarction involving left circumflex coronary artery		
		I2129	ST elevation (STEMI) myocardial infarction involving other sites		
		I213	ST elevation (STEMI) myocardial infarction of unspecified site		
		I214	Non-ST elevation (NSTEMI) myocardial infarction		
		I219	Acute myocardial infarction, unspecified		
		I21A1	Acute myocardial infarction type 2		
		I21A9	Other myocardial infarction type		
		I220	Subsequent ST elevation (STEMI) myocardial infarction of anterior wall		
		I221	Subsequent ST elevation (STEMI) myocardial infarction of inferior wall		
		I222	Subsequent non-ST elevation (NSTEMI) myocardial infarction		
		I228	Subsequent ST elevation (STEMI) myocardial infarction of other sites		
		I229	Subsequent ST elevation (STEMI) myocardial infarction of unspecified site		
		I230	Hemopericardium as current complication following acute myocardial infarction		
		I231	Atrial septal defect as current complication following acute myocardial infarction		
		I232	Ventricular septal defect as current complication following acute myocardial infarction		
		I233	Rupture of cardiac wall without hemopericardium as current complication following acute myocardial infarction		
		I234	Rupture of chordae tendineae as current complication following acute myocardial infarction		
		I235	Rupture of papillary muscle as current complication following acute myocardial infarction		
		I236	Thrombosis of atrium, auricular appendage, and ventricle as current complications following acute myocardial infarction		
		I237	Postinfarction angina		
		I238	Other current complications following acute myocardial infarction		
		I462	Cardiac arrest due to underlying cardiac condition		
		I468	Cardiac arrest due to other underlying condition		
		I469	Cardiac arrest, cause unspecified		
		CHF	I420	Dilated cardiomyopathy	
			I421	Obstructive hypertrophic cardiomyopathy	
			I422	Other hypertrophic cardiomyopathy	
			I423	Endomyocardial (eosinophilic) disease	
			I424	Endocardial fibroelastosis	
			I425	Other restrictive cardiomyopathy	
			I426	Alcoholic cardiomyopathy	
			I427	Cardiomyopathy due to drug and external agent	
			I428	Other cardiomyopathies	
			I429	Cardiomyopathy, unspecified	
			I501	Left ventricular failure, unspecified	
I5020	Unspecified systolic (congestive) heart failure				
I5021	Acute systolic (congestive) heart failure				



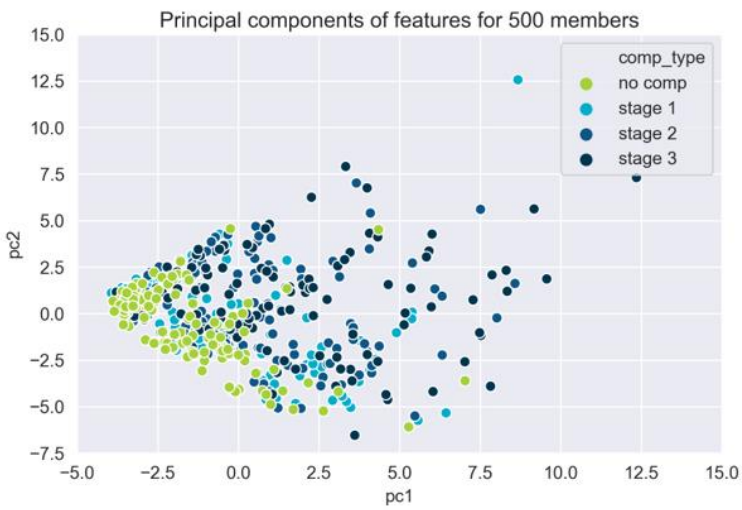
			I5022	Chronic systolic (congestive) heart failure
			I5023	Acute on chronic systolic (congestive) heart failure
			I5030	Unspecified diastolic (congestive) heart failure
			I5031	Acute diastolic (congestive) heart failure
			I5032	Chronic diastolic (congestive) heart failure
			I5033	Acute on chronic diastolic (congestive) heart failure
			I5040	Unspecified combined systolic (congestive) and diastolic (congestive) heart failure
			I5041	Acute combined systolic (congestive) and diastolic (congestive) heart failure
			I5042	Chronic combined systolic (congestive) and diastolic (congestive) heart failure
			I5043	Acute on chronic combined systolic (congestive) and diastolic (congestive) heart failure
			I5081	Right heart failure
			I50810	Right heart failure, unspecified
			I50811	Acute right heart failure
			I50812	Chronic right heart failure
			I50813	Acute on chronic right heart failure
			I50814	Right heart failure due to left heart failure
			I5082	Biventricular heart failure
			I5083	High output heart failure
			I5084	End stage heart failure
			I5089	Other heart failure
			I509	Heart failure, unspecified
			I130	Hypertensive heart and chronic kidney disease with heart failure and stage 1 through stage 4 chronic kidney disease, or unspecified chronic kidney disease
			I110	Hypertensive heart disease with heart failure
	Brain	Stroke	I60-I66	Cerebrovascular disease

Supplementary Table S3: Model performance on holdout data for cohorts with and without complications during the intake window

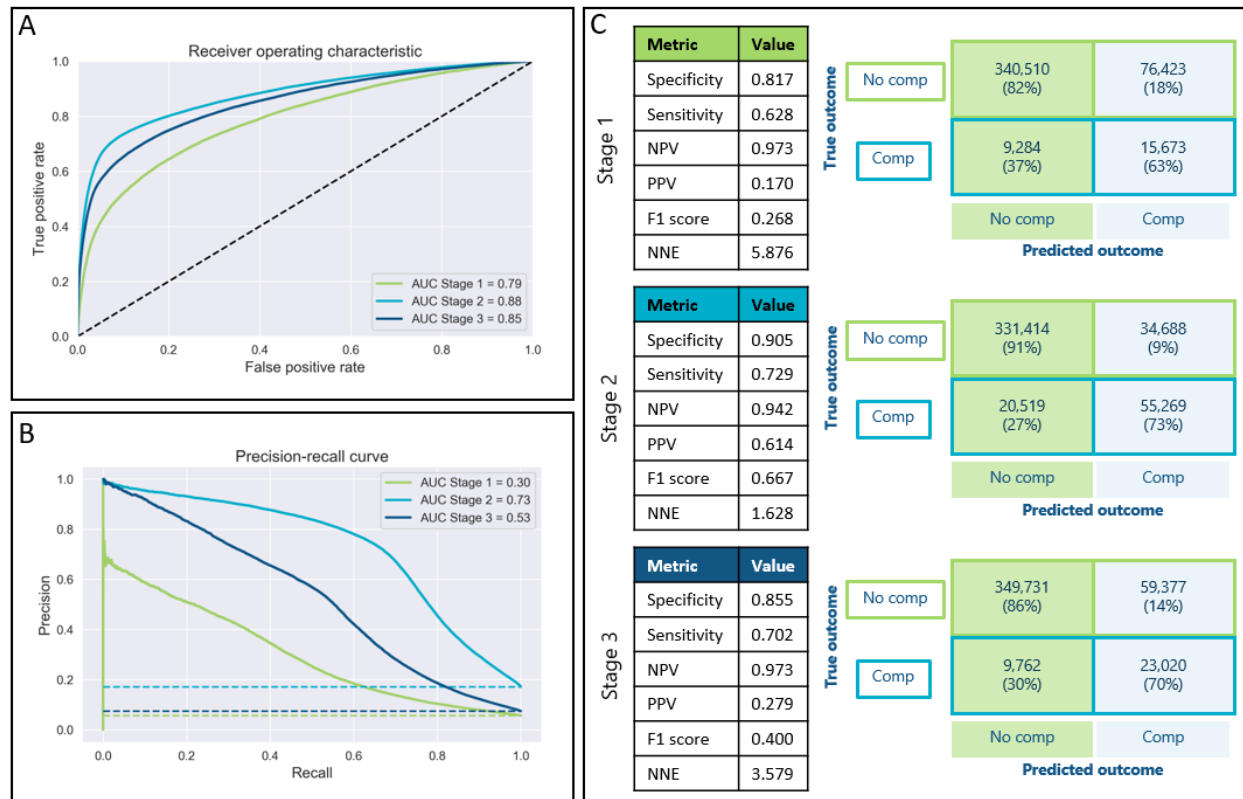
	Combined stage 1	With intake stage 1 chronic comp	Without intake stage 1 chronic comp	Combined stage 2	With intake stage 2 chronic comp	Without intake stage 2 chronic comp	Combined stage 3	With intake stage 3 chronic comp	Without intake stage 3 chronic comp
Member count	1,767,559	65,300	1,702,259	1,767,559	240,035	1,527,524	1,767,559	61,534	1,706,025
% with comp during prediction window	5.6	30.0	4.7	17.1	72.6	8.4	7.4	66.4	5.3
AUROC	0.791	0.670	0.757	0.879	0.749	0.759	0.850	0.757	0.787
Specificity	0.817	0.679	0.752	0.906	0.715	0.783	0.855	0.717	0.821
Sensitivity	0.628	0.569	0.624	0.728	0.659	0.596	0.703	0.660	0.613
NPV	0.973	0.786	0.976	0.942	0.442	0.955	0.973	0.516	0.974
PPV	0.170	0.431	0.111	0.616	0.860	0.202	0.279	0.822	0.161
F1 score	0.268	0.491	0.189	0.667	0.746	0.302	0.400	0.732	0.255

Combined refers to cohort including people both with and without complications during the intake window. AUROC, area under the receiver operating characteristic curve; comp, complication; NPV, negative predictive value; PPV, positive predictive value.

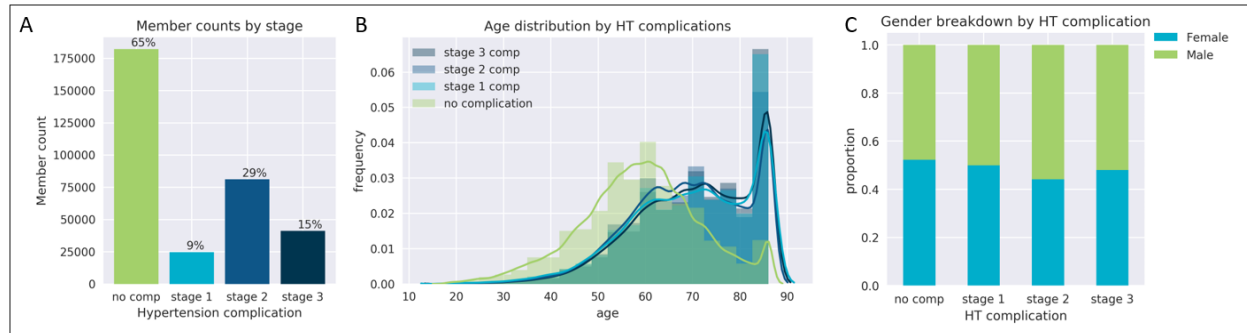
## SUPPLEMENTAL FIGURES



**Figure S1. Two dimensional representation of 112 feature inputs with principal component analysis.**



**Figure S2. Model performance on Truven holdout dataset.** (A) Receiving operating characteristic and (B) precision-recall curves for models predicting stage 1, stage 2, and stage 3 complications across thresholds. Dashed lines indicate baseline performance. (C) Other performance metrics and confusion matrices for stage 1, stage 2, and stage 3 models. AUC, area under curve; comp, complication; NNE, number needed to evaluate; NPV, negative predictive value; PPV, positive predictive value.



**Figure S3. Demographic characteristics of independent dataset population**