

1 **Evaluation of the Abbott Architect, Roche Elecsys and Virtus S1 SARS-CoV-2 antibody tests in**
2 **community-managed COVID-19 cases**

3
4 Sebastian L. Johnston MBBS PhD, Paul F McKay PhD, Tatiana Kebabze MD, Kai Hu PhD, Karnyart
5 Samnuan, Juliya Aniscenko, Aoife Cameron PhD, Neeta Patel PhD, Paul Randell, Robin J Shattock PhD,
6 Michael R Edwards PhD.

7
8 From:

9 Virtus Respiratory Research Ltd (SLJ, TK, JA, AC, NP, MRE)

10 National Heart and Lung Institute, Imperial College London, United Kingdom (SLJ, TK, JA, AC, MRE)

11 Department of Infectious Disease, Imperial College London, United Kingdom (PFM, KH, KS, RJS)

12 North West London Pathology, Charing Cross Hospital, Fulham Palace Rd, Hammersmith, London,
13 W6 8RF, United Kingdom (PR).

14
15
16 Corresponding author:

17 Sebastian L Johnston

18 Professor of Respiratory Medicine & Allergy

19 National Heart and Lung Institute

20 Imperial College London

21 Norfolk Place

22 London W2 1PG

23 United Kingdom

24 Tel: +44 20 7594 3764

25 e-mail: s.johnston@imperial.ac.uk

26

27 **Abstract**

28 **Background.** Antibody testing can help define how protective immunity to SARS-CoV-2 is and how
29 long this immunity lasts. Many antibody tests have been evaluated in hospitalised rather than
30 community based COVID-19 cases. Virtus Respiratory Research Ltd (Virtus) has developed its own
31 quantitative IgM and IgG SARS CoV-2 antibody assay. We report its validation and performance
32 characteristics and compare its performance with the Abbott Architect and Roche Elecsys assays in
33 community COVID cases.

34 **Methods** We developed a quantitative antibody test to detect IgM and IgG to the SARS-CoV-2 S1
35 spike protein (the Virtus test) and validated this test in 107 “true positive” sera from 106 community-
36 managed and 1 hospitalised COVID-19 cases and 208 “true negative” serum samples. We validated
37 the Virtus test against a neutralising antibody test. We determined sensitivities of the Abbott test in the
38 107 true positive samples and the Roche test in a subset of 75 true positive samples.

39 **Results** The Virtus quantitative test was positive in 93 of 107 (87%) community cases of COVID-19
40 and both IgM and IgG levels correlated strongly with neutralising antibody titres ($r=0.75$ for IgM, $r=0.71$
41 for IgG, $P<0.0001$ for both antibodies). The specificity of the Virtus test was 98.6% for low level
42 antibody positives, 99.5% for moderate positives and 100% for high or very high positives. The Abbott
43 test had a sensitivity of 68%. In the 75 sample subset, the Virtus test was positive in 91%, the Roche
44 test in 69%.

45 **Conclusions** The Abbott and Roche tests had sensitivities of 68% and 69% respectively in this
46 community set of COVID-19 sera, while the Virtus test had sensitivities of 87% and 91% in the same
47 sample sets. The strong positive correlation with virus neutralization suggests a positive Virtus
48 quantitative antibody test is likely predictive of protective against recurrent COVID-19.

49
50 **Funding** The development of the Virtus test and sample testing with all antibody tests was funded by
51 Virtus Respiratory Research Ltd. The research studies providing 111 of the 208 of the “true negative”
52 samples was supported by MRC Grant numbers MR/M025330/1 and G1100238 and by the National
53 Institute of Health Research (NIHR) Imperial Biomedical Research Centre (BRC), SLJ is a NIHR

54 Emeritus Senior Investigator and is funded in part by European Research Council Advanced Grant
55 788575 and the Asthma UK Clinical Chair (grant CH11SJ). The views expressed are those of the
56 author(s) and not necessarily those of the NIHR or the Department of Health and Social Care.

57

58 Word count for Abstract 296, for body – 4015 words.

59

50 **Key words:** COVID-19, SARS-CoV-2 antibody testing, SARS-CoV-2 immunity, Virtus S1 antibody
51 test, Abbott Architect IgG antibody test, Roche Elecsys total antibody test

52 Introduction

53 The global impact of COVID-19 is immense and the public health threat it poses is unprecedented,
54 immediate and ongoing(1). Public health responses to COVID-19, the disease caused by SARS-CoV-2
55 infection, depend upon understanding the degree to which SARS-CoV-2 infection results in immune
56 responses that protect people from future infections or illness, and the duration of such protection(2).
57 Individuals who have been infected with SARS-CoV-2 also want to know to what degree and for how
58 long they may be protected. The presence or absence of protective immunity to infection can be
59 assessed by studying antibody levels.

70 Experience with seasonal coronavirus infections indicates that of higher titres of virus-specific antibody
71 is protective against disease expression upon re-infection. An experimental study with coronavirus
72 229E demonstrated that 10 of 15 challenged volunteers became infected, and that those who did not
73 become infected had significantly higher serum IgG antibody levels than those that did, indicating that
74 higher levels of antibody were a marker of protection from infection(3). Nine of the 10 infected subjects
75 were re-challenged with the same dose of the same virus approximately one year later, when their
76 antibody levels had declined to around one third of the post-infection peak, but were still higher than
77 their levels before the first virus challenge. Six of the 9 re-challenged subjects became infected (shed
78 virus), but the duration of virus shedding was much shorter than on the first infection (2 vs 6 days) and
79 none of the 9 developed any symptoms (8 of the 10 infected subjects had cold symptoms on the first
80 infection(3). Thus virus shedding and illness were both reduced on re-infection when antibody levels
81 were higher, consistent with antibody being a marker of protection from disease upon re-infection(3),
82 and emphasising the merit of quantitative antibody testing, so that the strength of the immune
83 response can be assessed.

84 The Abbott Architect SARS-CoV-2 antibody test is a qualitative test that gives a positive/negative
85 result for IgG against the SARS-CoV-2 nucleoprotein. Based on validation in sera taken ≥ 14 days from
86 symptom onset from 31 cases (severity unspecified) of COVID-19, Abbott reported a sensitivity of
87 100% (95% confidence interval [CI] 95.89-100.00) and on validation in 997 sera taken pre-COVID-19,
88 a specificity of 99.6% (95% CI: 98.98-99.89)(4). The Roche Elecsys test is a qualitative test that gives

39 a positive/negative result for total antibodies (subtype unspecified) against the SARS-CoV-2
30 nucleoprotein. Based on validation in sera taken ≥ 14 days from symptom onset from 29 cases
31 (severity unspecified) of COVID-19, Roche also reported a sensitivity of 100% (95% CI 88.1-100) and
32 on validation in 5,272 sera taken pre-COVID-19, a specificity of 99.81% (95% CI: 99.65-99.91)(5).
33 Public Health England (PHE) evaluated the Abbott and Roche assays in 96 and 93 sera from
34 recovered COVID-19 cases respectively and reported sensitivities of 92.7% (95%CI 85.6-97.0)(6), and
35 83.9% (95%CI 74.8-90.7)(7), respectively. Both evaluations included hospitalised COVID-19 cases,
36 but precise numbers of hospitalised vs non-hospitalised cases and severities of disease were not
37 reported. Based on these company-reported sensitivities and PHE evaluations, these assays are now
38 very widely used in diagnostic laboratories.

39 Further reported sensitivities for the Abbott test are 99.1% in hospitalised patients(8), 97.9% in a mix of
40 hospitalised patients and infected healthcare workers(9), 100% in patients, the vast majority of whom
41 were hospitalised(10), 100 % in sera from patients whose disease severity was not specified(11) and
42 84.2% in patients admitted to a Singapore hospital, all of whom had respiratory symptoms and/or
43 fever, but disease severity was not further reported(12). Reported sensitivities for the Roche test are
44 98.3% in sera from mostly hospitalised patients(13). Abbott and Roche test sensitivities were 95.4%
45 and 87.9% respectively in sera from a mix of 40 hospitalised (25 in ICU) patients and 28 infected
46 healthcare workers (14), and 94.0% and 97.4% respectively in sera from hospitalised patients in
47 Taiwan(15) and 92.7% and 97.2% in a mix of infected healthcare workers, blood donors and
48 hospitalised patients(16). There is a paucity of data on the sensitivities of these tests in community-
49 managed COVID-19 cases.

10 Virtus Respiratory Research Ltd (Virtus) has developed its own in-house antibody test quantitating
11 (through use of a standard curve of proprietary pooled positive sera) levels of both IgM and IgG
12 antibodies to the SARS-CoV-2 S1 subunit of the spike protein. We chose the spike protein because it
13 is the major target of neutralising antibodies(17). Virtus has validated this test in sera from 106
14 community-managed and one hospitalised COVID-19 cases, including asymptomatic cases, as well as
15 against a neutralisation assay. The Abbott and Roche tests were also evaluated in the same panel of

16 sera.

17 **Methods**

18 **Sample collection for validation of the Virtus SARS-CoV-2 antibody test**

19 Social media approaches were used to invite 107 community cases of COVID-19 to donate blood to
20 Virtus for commercial development of novel COVID-19 antibody tests. Each donor gave signed
21 informed consent for donation of blood for service evaluation of new SARS-CoV-2 antibody testing
22 services and for use/storage of their data. A brief medical history was taken to ascertain type of testing
23 and date of testing used to verify SARS-CoV-2 infection, along with date of illness onset and a brief
24 description of the symptoms manifest and their severity during the COVID-19 illness.

25 Negative serum samples were 208 samples comprising 111 samples from healthy subjects collected
26 during two research studies conducted at Imperial College London with all 111 samples collected at
27 least 6 months prior to 31st December 2019 and stored long term at -80°C. Informed signed consent
28 for both research studies was obtained, including permission for future transfer of these samples to
29 commercial entities. The samples were transferred to Virtus under a Material Transfer Agreement with
30 Imperial College London. Research Ethics Committee approval reference numbers for these research
31 studies were 15/LO/1666 and 12/LO/1278. Eighty-two true negative serum samples came from healthy
32 subjects taking part in two Virtus commercially funded research studies with all samples collected at
33 least 6 months prior to 31st December 2019 and stored long term at -80°C. Informed signed consent
34 for both research studies was obtained, including permission for future testing of these samples. Ethics
35 approval numbers for these studies were 15/ES/0112 and 18/EM/0311. The final 15 negative serum
36 samples were sera from clinical test samples submitted to Virtus for commercial testing, having
37 previously been determined negative by the Abbott Architect SARS-CoV-2 IgG antibody assay in The
38 Doctors Laboratory commercial testing laboratory.

39 **The Virtus quantitative antibody test to detect IgM and IgG to the SARS-CoV-2 S1 spike protein**

40 This assay is an enzyme linked immunosorbent assay (ELISA) testing for serum antibody
41 immunoreactivity to the SARS CoV-2 Spike S1 subunit protein. This assay was built in house using
42 commercially sourced mammalian cell expressed S1 spike protein antigen. Antibodies used were goat
43 anti-human IgM and IgG antibodies used at a dilution of 1:1000. Raw data for antibody binding to S1

14 antigen and no antigen (background) is produced for each assay. Raw data is recorded as an
15 Absorbance (A) value at 450nm. From this, a mean of duplicates is calculated, and the mean value of
16 the blank plate duplicates is subtracted from that of antigen coated plates. The final value is the
17 A450nm value of antibody binding to S1 antigen – no antigen A450nm value. Negative values are
18 converted to a value of 0.000.

19 The standard curve used a pooled proprietary positive control serum (3 separate Virtus test-positive
20 serum samples pooled into a single sample) serially diluted 1/2-fold over 6 dilutions and run 21 times
21 for the top point and 8 times for the full standard curve to generate mean values for each point on the
22 standard curve to calibrate unknown samples against. For both IgM and IgG, each experimental point
23 (x) on each standard curve is assigned a known value (y), and values of unknown samples are thus
24 determined based on the performance of the standard curve. Results are expressed as A450nm
25 arbitrary units (AU). Intra-assay reproducibility is <5% Coefficient of Variation (CV) in n=188
26 duplicates, the inter-assay reproducibility is <15% CV in n=76 replicates.

27 **The SARS-CoV-2 neutralising antibody test**

28 Further validation was performed using a SARS-CoV-2 pseudo-virus neutralisation assay as
29 described(18). This assay utilises a plasmid encoding the SARS-CoV-2 spike protein, along with a
30 lentivirus plasmid encoding other structural proteins required for the lentivirus capsid, and a plasmid
31 encoding a luciferase reporter gene. When introduced by transfection into competent cells, virus-like
32 particles are produced in the supernatant with the lentivirus capsid expressing the SARS-CoV-2 Spike
33 protein. The virus-like particles are functional and infect the Caco-2 cell line used, which expresses the
34 SARS-CoV-2 receptor ACE2(19). Infection is measured by the production of luciferase, indicating virus
35 entry and production of luciferase protein by the luciferase plasmid. When mixed with serum as a
36 dilution series, infection is potentially blocked by serum antibodies, indicating the presence of SARS-
37 CoV-2 Spike protein neutralising antibody. Neutralisation assay data is expressed as an IC₅₀ of serum
38 antibody titre. All neutralisation assays were performed by Imperial College London in Professor Robin
39 Shattock's laboratory.

70 **Statistical analysis**

71 Data were presented as estimates with 95% CIs. Comparisons between positive and negative samples
72 was performed using the Mann-Whitney-u test. Correlation analyses were performed with Spearman's
73 correlation. Statistical analyses were performed using Prism 7.04 (GraphPad Software).

74

75 **Results**

76 **Validation of the Virtus quantitative antibody test for IgM and IgG antibodies to the SARS-CoV-2 S1**
77 **subunit spike protein.**

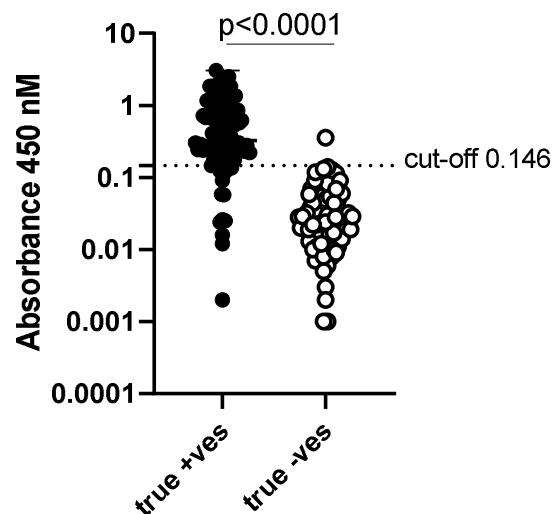
78 *Clinical description of the Virtus community COVID-19 positive case serum bank*

79 One hundred and seven (107) serum samples were collected between 11th and 28th April 2020 from
30 community-based individuals with previous test-confirmed COVID-19 infection at least 10 days after
31 the earlier of symptom onset or testing positive for SARS-CoV-2. The mean time of blood sampling
32 from symptom onset/test positive was 28 days (range 10-75). Of these 107 confirmed positive
33 samples, 94 were confirmed positive by PCR reported SARS-CoV-2 positive by NHS or commercial
34 testing laboratories, 13 were positive by a variety of commercially sourced lateral flow antibody tests
35 performed on finger prick capillary blood samples and 7 of the 94 were positive by both PCR and
36 lateral flow antibody tests.

37 Clinical illness severity varied from asymptomatic cases (n=3) through mild/moderate community-
38 managed disease, only a single case was severe enough to require admission to hospital for 5 days,
39 with oxygen requirement, but no intensive care or assisted ventilation.

30 *Determination of cut-off values for positivity*

31 After validation using 107 true positive sera and 208 true negative sera, cut-off values in A450nm were
32 chosen that defined the positive and negative population. These cut-off values were chosen to
33 optimise sensitivity and to meet the specificity requirement announced by the Medicines and
34 Healthcare Regulatory Authority (MHRA) that all COVID-19 antibody tests to be sold for testing of the
35 general public should have a minimum specificity of 98%. The cut off value chosen for positivity in the
36 IgM assay was 0.146AU - a value 9.8 times the mean and 4 times the standard deviation (SD) of the
37 true negative samples, while that in the IgG assay was 0.201AU - a value 7.1 times the mean and 3.85
38 times the standard deviation (SD) of the true negative samples. The absorbance values for the IgM
39 assay are depicted in Figure 1 and the data are summarised in Table1, while those for the IgG assay
40 are in Figure 2 and Table 2.



01

02 **Figure 1: Analysis of true positive and true negative samples for IgM antibodies to the SARS-**
 03 **CoV-2 S1 spike protein in the Virtus test.**

04 Absorbance values at 450nM (Log₁₀ transformed) results for testing the 107 true positive serum
 05 samples (black circles) and 208 true negative serum samples (open circles) for IgM antibody levels.
 06 The accepted cut-off for positivity of 0.146 is shown.

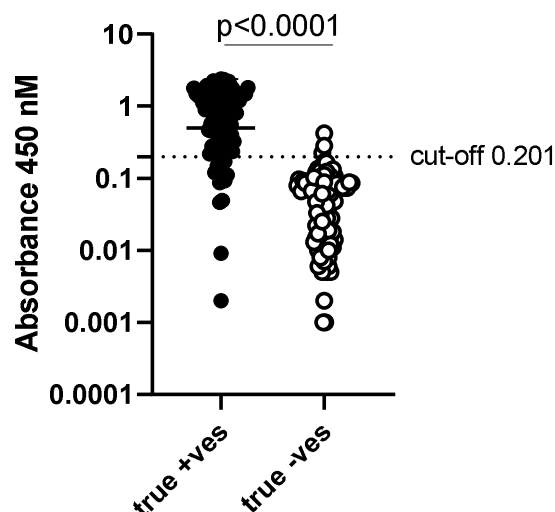
07

08 **Table 1: Summary of result data for analysis of true positive and true negative samples for IgM**
 09 **antibodies to the SARS-CoV-2 S1 spike protein in the Virtus test.**

	True +ves	True -ves
Number of values	107	208
Minimum	0	0
25% Percentile	0.19	0
Median	0.325	0
75% Percentile	0.826	0.01375
Maximum	3.067	0.357
Range	3.067	0.357
95% CI of median		
Lower confidence limit	0.26	0
Upper confidence limit	0.577	0
Mean	0.6273	0.01494

Std. Deviation	0.6616	0.03638
Std. Error of Mean	0.06396	0.002522
Lower 95% CI of mean	0.5005	0.009965
Upper 95% CI of mean	0.7541	0.01991

10



11

12 **Figure 2: Analysis of true positive and true negative samples for IgG antibodies to the SARS-**
 13 **CoV-2 S1 spike protein in the Virtus test.**

14 Absorbance values at 450nM (Log_{10} transformed) results for testing the 107 true positive serum
 15 samples (black circles) and 208 true negative serum samples (open circles) for IgM antibody levels.
 16 The accepted cut-off for positivity of 0.201 is shown.

17

18 **Table 2: Summary of result data for analysis of true positive and true negative samples for IgG**
 19 **antibodies to the SARS-CoV-2 S1 spike protein in the Virtus test.**

20

	True +ves	True -ves
Number of values	107	208
Minimum	0	0
25% Percentile	0.12	0

Median	0.497	0
75% Percentile	1.346	0.04675
Maximum	2.398	0.421
Range	2.398	0.421
95% CI of median		
Lower confidence limit	0.296	0
Upper confidence limit	0.827	0.006
Mean	0.7464	0.02846
Std. Deviation	0.7067	0.05217
Std. Error of Mean	0.06832	0.003617
Lower 95% CI of mean	0.6109	0.02133
Upper 95% CI of mean	0.8818	0.03559

21

22 *Determination of cut-off values for low, medium high and very high SARS-CoV-2 antibody positivity*

23 As the Virtus test is a quantitative antibody test giving absorbance values calculated from the standard
 24 curve generated from proprietary pooled positive samples, based on A450nM readings, positive
 25 samples were further categorised into; low, medium, high or very high positive samples, to permit
 26 calculation of specificity for each categorisation. Table 3 describes the cut-off values used to determine
 27 the different positive categories.

28

29 **Table 3: Categorisation of positive samples for IgM and IgG antibodies to the SARS-CoV-2 S1**
 30 **spike protein in the Virtus test.**

Category	IgM A450	IgG A450
Low positive	0.146-0.400	0.201-0.400
Medium positive	0.401-0.75	0.401-0.75
High positive	0.751-1.25	0.751-1.25
Very high positive	>1.25	>1.25

31

32 *Determination of sensitivity and specificity for low, medium high and very high SARS-CoV-2 antibody*
 33 *positivity*

34 The Virtus quantitative antibody test was positive for IgM and/or IgG in 93 (87%) of the 107 community
35 cases of COVID-19 giving a sensitivity of 86.9% (95% CI 79.0-92.7%).

36 The specificities for the various cut-offs for low, medium high and very high positivity are given in Table
37 4.

38

39 **Table 4: Specificities for the categorised positive samples for IgM and IgG antibodies to the**
40 **SARS-CoV-2 S1 spike protein in the Virtus test.**

	Low +ve	Medium +ve	High +ve	Very high +ve
IgM & IgG	98.6% (3/208)	99.5% (1/208)	100% (0/208)	100% (0/208)
95% CI	95.8% to 99.7%	97.4% to 100%	98.2% to 100%	98.2% to 100%

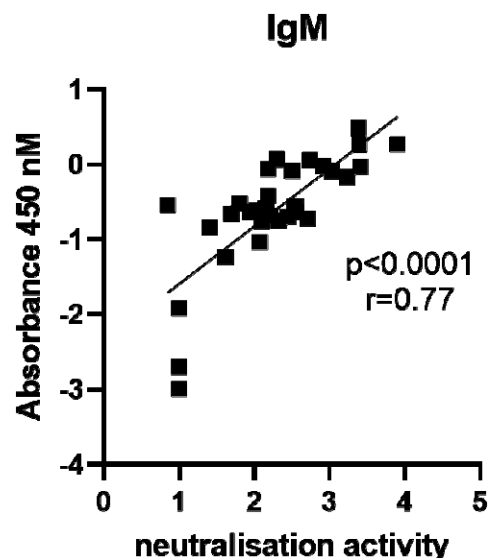
41

42 *Validation of the Virtus SARS-CoV-2 IgM and IgG quantitative serology assay against a virus*
43 *neutralisation assay*

44 Virus neutralisation tests identify antibodies that are able to block live virus from entering and infecting
45 live cells. To determine whether antibodies detected by the Virtus quantitative antibody test correlate
46 with live virus neutralising activity, we used samples from 32 true positive cases, exhibiting a wide
47 range of A450 values in the Virtus test and compared to data from a pseudo-virus neutralisation assay
48 in which live virus-like particles use the SARS-CoV-2 Spike protein to enter and infect cells(18).

49 Both IgM and IgG levels detected by the Virtus test correlated strongly with neutralising antibody titres
50 detected in the neutralisation test, with $r=0.77$, $P<0.0001$ for IgM (Figure 3) and $r=0.71$, $P<0.0001$ for
51 IgG antibodies (Figure 4).

52



33

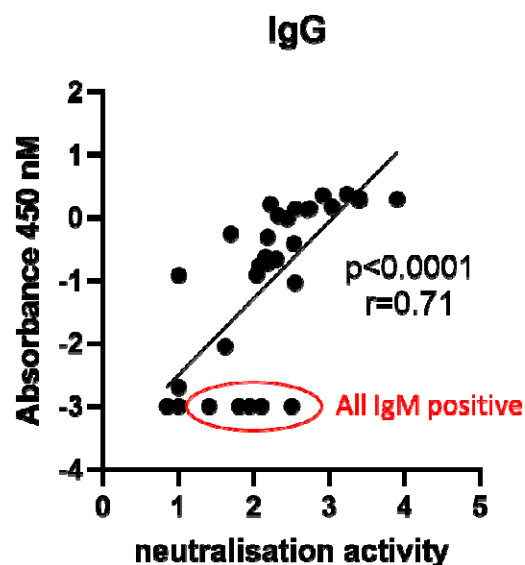
34 **Figure 3: Correlation of true positive samples for IgM antibodies to the SARS-CoV-2 S1 spike**
35 **protein in the Virtus test with neutralising activity in a neutralising antibody test.**

36 Correlation of IgM A450nM results with neutralising activity in the pseudo-virus neutralisation assay.

37 Neutralisation data (x-axis) and SARS-CoV-2 S1 ELISA IgM data (y-axis) are Log₁₀ transformed, n=32

38 samples, r and P values are a result of Spearman correlation.

39



50

51 **Figure 4: Correlation of true positive samples for IgG antibodies to the SARS-CoV-2 S1 spike**
52 **protein in the Virtus test with neutralising activity in a neutralising antibody test.**

53 Correlation of IgM A450nM results with neutralising activity in the pseudo-virus neutralisation assay.
54 Neutralisation data (x-axis) and SARS-CoV-2 S1 ELISA IgM data (y-axis) are Log₁₀ transformed, n=32
55 samples, r and P values are a result of Spearman correlation. Note the 5 samples circled in red with
56 detectable neutralising activity that were negative on IgG testing, all had positive results on testing for
57 IgM.

58
59 **Performance evaluation of the Abbott Architect SARS-CoV-2 IgG antibody test in the Virtus**
60 **community COVID-19 case serum sample bank**

61 All 107 sera from the Virtus COVID-19 test positive community-managed sample set, in which the
62 Virtus test was positive in 86.9% of samples, were analysed in an independent laboratory (North West
63 London Pathology [NWLP] at Charing Cross Hospital using the Abbot Architect test according to the
64 manufacturer's instructions. The Abbott test was positive in only 73 (68.2%) of these 107 samples, with
65 20 (18.7%) samples detected by the Virtus test, that were negative on the Abbott test, of these 20
66 samples, 8 were IgM alone positive samples while 3 were IgG alone and 9 were dual IgM and IgG
67 positive on the Virtus test. There were no samples that were Abbott test positive and Virtus test
68 negative (Supplementary Table 1).

69
70
71
72
73
74
75
76
77
78
79
80 **Performance evaluation of the Roche Elecsys SARS-CoV-2 total antibody test in the Virtus**
81 **community COVID-19 case serum sample bank**

82 Seventy five of the 107 samples in the Virtus community COVID-19 case serum sample bank underwent
83 testing by NWLP using the Roche assay. The Virtus test was positive in 68 (90.7%) of these 75 samples
84 while the Roche test was positive in only 52 (69.3%) of these 75 samples, with 16 (21.3%) samples
85 detected by the Virtus test, that were negative on the Roche test. As the Roche test is a total antibody
86 test that detects both IgM and IgG, we did not analyse the IgM/IgG positivity of these 16 Roche test
87 negative samples that were positive in the Virtus test. There were no samples that were Roche test
88 positive and Virtus test negative (Supplementary Table 2).

89

30 Discussion

31 The sensitivity of the Virtus quantitative test for IgM and IgG antibodies to the SARS-CoV-2 spike protein
32 S1 subunit in this set of sera from 106 community managed COVID-19 cases and only a single hospitalised
33 case, was 87%. The Virtus test failed to detect antibody positivity in only 13% of these cases. Despite
34 company claims of 100% sensitivity for both the Abbott and the Roche tests(4, 5), both tests were found in
35 this performance evaluation in community-managed cases of COVID-19 to have substantially lower
36 sensitivities of 68% and 69% respectively. Both Abbott and Roche tests failed to detect antibody positivity
37 in more than 30% of serum samples from community patients previously tested positive for SARS-CoV-2
38 infection. The majority of these false negative tests in the Abbott and Roche tests were detected as
39 antibody positive in the Virtus test (20/34 samples [59%] for Abbott test false negatives and 16/23 samples
40 [70%] for Roche test false negatives), and all samples which were negative in the Virtus test, were also
41 negative in the Abbott and Roche tests.

42 Most publications reporting sensitivities for the Abbott Architect and Roche Elecsys SARS-CoV-2
43 antibody tests have investigated mostly or exclusively hospitalised patients, which in most countries
44 means only people with severe COVID-19, who therefore have high virus loads stimulating very robust
45 immune responses, not unexpectedly resulting in reported sensitivities of 99.1%(8), 97.9%(9),
46 100%(10, 11), 98.3%(13), 95.4% and 87.9% respectively(14), 94.0% and 97.4% respectively(15) and
47 92.7% and 97.2% respectively(16). The lowest sensitivity reported is 84.2% in patients admitted to a
48 Singapore Hospital, all of whom had respiratory symptoms and/or fever, but disease severity was not
49 further reported, but possibly was milder in this low prevalence country(12).

10 There is little data on the sensitivities of antibody tests in community COVID-19 cases, however a pre-
11 print reported sensitivities of both tests in 26 individuals who had SARS-CoV-2 neutralising antibodies
12 detected by in-house neutralisation testing and who were social and working contacts of an index case
13 in a community outbreak in Germany. Only 5 of these 26 individuals were asymptomatic, with the rest
14 having typical symptoms including headache, sore throat, myalgia, cough, fatigue, anosmia, ageusia
15 and other typical symptoms. Twenty 23 (88.5%) of the 26 were also positive for SARS-CoV-2 IgG by
16 immunofluorescence testing. The sensitivity of the Abbott test in these 26 neutralising antibody-
17 positive sera was only 61.5% and that of the Roche test only 65.4%(20). These figures in very similar

18 to the sensitivities in our own community COVID-19 serum panel of 68% for the Abbott test and 69%
19 for the Roche test. Other commonly used tests were also assessed in these 26 neutralising antibody-
20 positive sera, with the Diasorin IgG to S1/S2 test performing similarly to the Abbott at 61.5% positive,
21 while the EUROIMMUN S1 IgA, S1 IgG and combined S1 IgA and/or IgG having positivities of only
22 46.2%, 46.2% and 53.8% respectively(20).

23 A low sensitivity for the Abbott test was suggested by personal communications from large numbers of
24 London GPs who had patients whom they were 100% certain had had significant clinical COVID-19 (at
25 a time when no community PCR testing was available in the UK), but who had subsequently tested
26 negative on the Abbott test. Low sensitivity was also strongly suggested by results from the Spanish
27 national serologic survey, in which the Abbott Architect test was used to screen 5118 people who had
28 typical COVID-19 symptoms (anosmia or ageusia, or at least three symptoms among: fever; chills;
29 severe tiredness; sore throat; cough; shortness of breath; headache; or nausea, vomiting, or
30 diarrhoea) at least 14 days prior to sampling, only 18.0% of whom were positive on the Abbott test(21).

31 The authors' interpretation of the fact that only 18% of symptomatic participants had antibodies against
32 SARS-CoV-2 was that "a sizable proportion of suspected cases might have had symptoms not caused
33 by this coronavirus"(21). We find the suggestion that up to 82% of people, with typical COVID-19
34 symptoms at a time when SARS-CoV-2 was rampant in Spain, did not have COVID-19, rather
35 implausible. A far likelier explanation in our view is that the Abbott test used had low sensitivity. This
36 interpretation is supported by our finding of 68% sensitivity for the Abbott test in our community cases
37 of COVID-19.

38 Our findings are also supported by a recent study reporting that 58% of 511 clinical samples that had
39 tested negative on the Abbott test, tested positive on an in-house double binding antigen ELISA (the
40 Imperial Hybrid DABA test), which detects total antibodies to SARS-CoV-2 spike protein receptor
41 binding domain (a subunit of the S1 protein used in the Virtus S1 test)(17).

42 Our findings have important implications for sero-epidemiologic surveys attempting to define
43 prevalence of past SARS-CoV-2 infections, in which the Abbott and Roche tests have been used to
44 determine prevalence of SARS-CoV-2 antibody positivity. The Abbott test was used in the Spanish

15 National survey(21) and our findings indicate that the prevalences reported therein have been
16 underestimated by at least 30%.

17 The Virtus test, as well as being the only quantitative test among the three tests evaluated, and thus
18 providing a measure of the strength of immune response generated against SARS-CoV-2, is also the
19 only one of the three tests which was validated against a pseudo-virus neutralisation assay. This assay
20 detects antibodies that are able to block SARS-CoV-2 spike protein-mediated viral entry, and thus
21 antibodies that are functional in preventing live virus infection(18). Given the highly significant and
22 strong correlations observed between IgM and IgG antibodies measured by the Virtus test, and
23 neutralising antibody titres in the same samples, it is highly probable that the antibodies measured by
24 the Virtus test are also likely to be functional, and capable of blocking SARS-CoV-2 spike protein-
25 mediated virus entry. As reported by others(17), this is less likely to be the case for tests like the
26 Abbott and Roche tests which use the nucleoprotein, rather than the surface expressed spike protein.
27 The Virtus test had a substantially better sensitivity than either the Abbott test or the Roche test,
28 detecting 87% compared with 68% and 69% respectively, however it still failed to detect antibody in
29 13% of this evaluation set of community COVID case sera. One possible explanation for this might be
30 that certain people produce antibodies that bind the SARS-CoV-2 nucleoprotein (the target antigen
31 used by both the Abbot and Roche assay) but not antibodies that bind the SARS-CoV-2 Spike S1
32 protein (the target antigen in the Virtus assay). The fact that there was not a single Abbott positive,
33 Virtus negative sample, nor a single Roche positive, Virtus negative sample suggests that this is
34 unlikely to be the explanation. An alternative explanation may be that the Virtus test, despite being
35 more sensitive than either the Abbott or Roche tests, may still be less sensitive than optimal. The cut-
36 offs for positivity for the Virtus test were required by the MHRA to be set such that positivity in pre-
37 COVID-19 sera was less than 2%, and therefore specificity >98%. This requirement makes the
38 unproven assumption that there is no, or almost no cross-reactivity in antibody responses between
39 antibodies generated by prior seasonal coronavirus exposure, and antibody responses to SARS-CoV-
40 2. Given that T cell responses to SARS-CoV-2 have been reported in large numbers of studies
41 investigating blood samples taken long before SARS-CoV-2 infected humans(22-27), it seems almost

72 certain that there is significant cross-reactive T cell immunity, and therefore highly likely there will be
73 cross-reactivity in antibody responses as well. The Virtus cut-off for positivity will, by definition, as
74 required by the MHRA, not detect such cross-reactive antibody responses in any more than 2% of
75 people not exposed to SARS-CoV-2. Studies with a quantitative antibody test, such as the Virtus test,
76 measuring antibody levels in large numbers of people on a monthly basis to determine initial as well as
77 long term antibody status, accompanied by regular swab testing (preferably twice weekly, as recurrent
78 infections can be very short-lived(3)) to identify asymptomatic as well as symptomatic SARS-CoV-2 re-
79 infections, will be needed to determine a cut off level for that antibody test that can be definitively
80 shown to provide protection against SARS-CoV-2 re-infection (both asymptomatic as well as
81 symptomatic). It is our belief that that cut-off will be lower than the current cut-off mandated by the
82 MHRA. Such studies are urgently needed.

83 In conclusion, we report the development and validation of the Virtus S1 antibody test, which is
84 quantitative and validated against a neutralising antibody test, and therefore likely detects antibodies
85 that are functional and protective. Further in a set of sera from recovered COVID-19 cases, all but one
86 of which were community-managed the Virtus test had a sensitivity of 87-91%. In contrast, contrary to
87 company claims of 100% sensitivity, and previous studies reporting mostly >95% sensitivity, the Abbott
88 and Roche tests failed to detect antibody responses in >30% of community cases of SARS-CoV-2
89 infection. Further refinement and development of antibody tests is needed, including studies
90 investigating quantitative levels of antibody that demonstrably provide protection against SARS-CoV-2
91 re-infections and disease.

92

93

34

35 **Author contributions**

36 All authors contributed to the writing of the manuscript and have approved the final version for publication.

37 Paul Randell supervised the Abbott and Roche test analyses and acts as guarantor for the Abbott and

38 Roche test data. Paul McKay, Karnyart Samnuan and Kai Hu performed, and Robin Shattock supervised

39 the neutralising antibody test analyses and act as guarantors for the neutralising antibody data. Michael

40 Edwards, Tatiana Keadze Juliya Aniscenko, Aoife Cameron and Neeta Patel performed the Virtus test

41 laboratory work. Michael Edwards and Sebastian Johnston led the Virtus assay test development and the

42 performance evaluations of each test and act as guarantors for Virtus data.

43

44

35 References

- 36 1. Wu F, Zhao S, Yu B, Chen YM, Wang W, Song ZG, et al. A new coronavirus associated with human respiratory
37 disease in China. *Nature*. 2020;579(7798):265-9.
- 38 2. Huang AT, Garcia-Carreras B, Hitchings MDT, Yang B, Katzelnick LC, Rattigan SM, et al. A systematic review of
39 antibody mediated immunity to coronaviruses: kinetics, correlates of protection, and association with severity. *Nat*
40 *Commun*. 2020;11(1):4704.
- 41 3. Callow KA, Parry HF, Sergeant M, Tyrrell DA. The time course of the immune response to experimental
42 coronavirus infection of man. *Epidemiol Infect*. 1990;105(2):435-46.
- 43 4. Abbott. Architect Anti-SARS-CoV-2 IgG test. . <https://www.fda.gov/media/137383/download>.
- 44 5. Roche. Elecsys® Anti-SARS-CoV-2. Package Insert. 2020;04 V1.0.:Material Numbers 09203095190 and 79190.
- 45 6. Duggan J, Brooks K, Andrews N, Brooks T, Migchelsen S. Evaluation of the Abbott SARS-CoV-2 IgG for the
46 detection of anti-SARSCoV-2 antibodies.
47 https://assets.publishing.service.gov.uk/government/uploads/system/uploads/attachment_data/file/890566/Evaluation_of_Abbott_SARS_CoV_2_IgG_PHE.pdf. 2020;May 18th.
- 48 7. Duggan J, Andrews N, Brooks T, Bown A, Migchelsen S. . Evaluation of Roche Elecsys AntiSARS-CoV-2
49 serology assay for the detection of anti-SARS-CoV-2 antibodies.
50 https://assets.publishing.service.gov.uk/government/uploads/system/uploads/attachment_data/file/891598/Evaluation_of_Roche_Elecsys_anti_SARS_CoV_2_PHE_200610_v81_FINAL.pdf. 2020;May 18th.
- 51 8. Batra R, Olivieri LG, Rubin D, Vallari A, Pearce S, Olivo A, et al. A comparative evaluation between the Abbott
52 Panbio COVID-19 IgG/IgM rapid test device and Abbott Architect SARS CoV-2 IgG assay. *J Clin Virol*.
53 2020;132:104645.
- 54 9. Manalac J, Yee J, Calayag K, Nguyen L, Patel PM, Zhou D, et al. Evaluation of Abbott Anti-SARS-CoV-2 CMIA
55 IgG and Euroimmun ELISA IgG/IgA Assays In a Clinical Lab. *Clin Chim Acta*. 2020.
- 56 10. Bryan A, Pepper G, Wener MH, Fink SL, Morishima C, Chaudhary A, et al. Performance Characteristics of the
57 Abbott Architect SARS-CoV-2 IgG Assay and Seroprevalence in Boise, Idaho. *J Clin Microbiol*. 2020.
- 58 11. Meschi S, Colavita F, Bordi L, Matusali G, Lapa D, Amendola A, et al. Performance evaluation of Abbott
59 ARCHITECT SARS-CoV-2 IgG immunoassay in comparison with indirect immunofluorescence and virus
60 microneutralization test. *J Clin Virol*. 2020;129:104539.
- 61 12. Chew KL, Tan SS, Saw S, Pajarillaga A, Zaine S, Khoo C, et al. Clinical evaluation of serological IgG antibody
62 response on the Abbott Architect for established SARS-CoV-2 infection. *Clin Microbiol Infect*. 2020.
- 63 13. Manthei DM, Whalen JF, Schroeder LF, Sinay AM, Li SH, Valdez R, et al. Differences in Performance
64 Characteristics Among Four High-Throughput Assays for the Detection of Antibodies Against SARS-CoV-2 Using a
65 Common Set of Patient Samples. *Am J Clin Pathol*. 2020.
- 66 14. Trabaud MA, Icard V, Milon MP, Bal A, Lina B, Escuret V. Comparison of eight commercial, high-throughput,
67 automated or ELISA assays detecting SARS-CoV-2 IgG or total antibody. *J Clin Virol*. 2020;132:104613.
- 68 15. Chen SY, Lee YL, Lin YC, Lee NY, Liao CH, Hung YP, et al. Multicenter evaluation of two chemiluminescence
69 and three lateral flow immunoassays for the diagnosis of COVID-19 and assessment of antibody dynamic responses
70 to SARS-CoV-2 in Taiwan. *Emerg Microbes Infect*. 2020;9(1):2157-68.
- 71 16. National SARS-CoV-Serology Assay Evaluation Group. Performance characteristics of five immunoassays for
72 SARS-CoV-2: a head-to-head benchmark comparison. *Lancet Infect Dis*. 2020.
- 73 17. Rosadas C, Randell P, Khan M, McClure MO, Tedder RS. Testing for responses to the wrong SARS-CoV-2
74 antigen? *Lancet*. 2020;396(10252):e23.
- 75 18. McKay PF, Hu K, Blakney AK, Samnuan K, Brown JC, Penn R, et al. Self-amplifying RNA SARS-CoV-2 lipid
76 nanoparticle vaccine candidate induces high neutralizing antibody titers in mice. *Nat Commun*. 2020;11(1):3523.
- 77 19. Liao K, Sikkema D, Wang C, Lee TN. Development of an enzymatic assay for the detection of neutralizing
78 antibodies against therapeutic angiotensin-converting enzyme 2 (ACE2). *J Immunol Methods*. 2013;389(1-2):52-60.
- 79 20. Mueller L, Ostermann PN, Walker A, Wienemann T, Mertens A, Adams O, et al. Sensitivity of commercial
80 Anti-SARS-CoV-2 serological assays in a high-prevalence setting. 2020:2020.06.11.20128686.
- 81 21. Pollan M, Perez-Gomez B, Pastor-Barriuso R, Oteo J, Hernan MA, Perez-Olmeda M, et al. Prevalence of SARS-
82 CoV-2 in Spain (ENE-COVID): a nationwide, population-based seroepidemiological study. *Lancet*.
83 2020;396(10250):535-44.

- 56 22. Braun J, Loyal L, Frentsch M, Wendisch D, Georg P, Kurth F, et al. SARS-CoV-2-reactive T cells in healthy
57 donors and patients with COVID-19. *Nature*. 2020.
- 58 23. Nelde A, Bilich T, Heitmann JS, Maringer Y, Salih HR, Roerden M, et al. SARS-CoV-2-derived peptides define
59 heterologous and COVID-19-induced T cell recognition. *Nat Immunol*. 2020.
- 50 24. Le Bert N, Tan AT, Kunasegaran K, Tham CYL, Hafezi M, Chia A, et al. SARS-CoV-2-specific T cell immunity in
51 cases of COVID-19 and SARS, and uninfected controls. *Nature*. 2020;584(7821):457-62.
- 52 25. Sekine T, Perez-Potti A, Rivera-Ballesteros O, Stralin K, Gorin JB, Olsson A, et al. Robust T Cell Immunity in
53 Convalescent Individuals with Asymptomatic or Mild COVID-19. *Cell*. 2020;183(1):158-68 e14.
- 54 26. Grifoni A, Weiskopf D, Ramirez SI, Mateus J, Dan JM, Moderbacher CR, et al. Targets of T Cell Responses to
55 SARS-CoV-2 Coronavirus in Humans with COVID-19 Disease and Unexposed Individuals. *Cell*. 2020;181(7):1489-501
56 e15.
- 57 27. Mateus J, Grifoni A, Tarke A, Sidney J, Ramirez SI, Dan JM, et al. Selective and cross-reactive SARS-CoV-2 T
58 cell epitopes in unexposed humans. *Science*. 2020;370(6512):89-94.

59

70

71

72

Supplementary appendix

73 **Evaluation of the Abbott Architect, Roche Elecsys and Virtus S1 SARS-CoV-2 antibody tests in**
74 **community-managed COVID-19 cases**

75

76 Sebastian L. Johnston MBBS PhD, Paul F McKay PhD, Tatiana Kebabze MD, Kai Hu PhD, Karnyart
77 Samnuan, Juliya Aniscenko, Aoife Cameron PhD, Neeta Patel PhD, Paul Randell, Robin J Shattock PhD,
78 Michael R Edwards PhD.

79

30 From:

31 Virtus Respiratory Research Ltd (SLJ, TK, JA, AC, NP, MRE)

32 National Heart and Lung Institute, Imperial College London, United Kingdom (SLJ, TK, JA, AC, MRE)

33 Department of Infectious Disease, Imperial College London, United Kingdom (PFM, KH, KS, RJS)

34 North West London Pathology, Charing Cross Hospital, Fulham Palace Rd, Hammersmith, London,
35 W6 8RF, United Kingdom (PR).

36

37 Corresponding author:

38 Sebastian L Johnston

39 Professor of Respiratory Medicine & Allergy

30 National Heart and Lung Institute

31 Imperial College London

32 Norfolk Place

33 London W2 1PG

34 United Kingdom

35 Tel: +44 20 7594 3764

36 e-mail: s.johnston@imperial.ac.uk

37

38 **Supplementary Table 1: Results of analysis of 107 sera from community based COVID-19 cases**
 39 **for antibodies to SARS-CoV-2 by the qualitative Abbott Architect test and by the Virtus S1 IgM**
 40 **& IgG quantitative test.**

Sample number	Abbott Architect test result		Virtus Test result			Virtus positive Abbott negative			
		n= positive	IgM A450AU	IgG A450AU	Overall n= positive	Virtus IgM alone	Virtus IgG alone	Virtus dual IgM & IgG	Total
1	Positive	1	0.300	0.000	1				
2	Positive	2	0.172	0.000	2				
3	Positive	3	1.834	2.076	3				
4	Positive	4	0.806	1.486	4				
5	Negative		0.233	0.000	5	1			1
6	Positive	5	0.272	1.371	6				
7	Negative		0.000	0.002					
8	Positive	6	0.925	1.351	7				
9	Positive	7	0.478	0.827	8				
10	Positive	8	1.144	1.396	9				
11	Positive	9	0.680	2.371	10				
12	Positive	10	0.120	0.497	11				
13	Positive	11	0.204	1.638	12				
14	Positive	12	0.057	0.454	13				
15	Negative		0.232	0.092	14	2			2
16	Positive	13	0.177	1.078	15				
17	Positive	14	0.176	0.668	16				
18	Negative		0.154	0.291	17			1	3
19	Positive	15	0.190	1.346	18				
20	Positive	16	0.619	1.227	19				
21	Positive	17	0.260	0.237	20				
22	Negative		0.016	0.149					
23	Positive	18	0.220	0.552	21				
24	Positive	19	0.958	2.247	22				
25	Positive	20	0.768	1.388	23				
26	Negative		0.221	0.190	24	3			4
27	Positive	21	0.192	1.065	25				
28	Positive	22	0.123	0.490	26				
29	Positive	23	0.278	0.000	27				
30	Negative		0.304	0.400	28			2	5
31	Positive	24	0.412	1.481	29				
32	Positive	25	0.206	0.120	30				
33	Positive	26	0.446	0.278	31				

34	Positive	27	0.252	0.949	32			
35	Negative		0.146	0.000	33	4		6
36	Negative		0.383	0.487	34		3	7
37	Positive	28	0.706	0.000	35			
38	Positive	29	0.321	0.355	36			
39	Negative		0.194	0.595	37		4	8
40	Positive	30	0.716	0.909	38			
41	Negative		1.205	0.794	39		5	9
42	Positive	31	0.909	1.318	40			
43	Negative		0.583	0.269	41		6	10
44	Negative		1.166	0.217	42		7	11
45	Positive	32	1.308	1.779	43			
46	Positive	33	1.343	2.212	44			
47	Positive	34	1.751	1.812	45			
48	Positive	35	0.800	0.897	46			
49	Negative		0.000	0.649	47		1	12
50	Positive	36	0.564	0.469	48			
51	Positive	37	0.205	1.623	49			
52	Positive	38	1.857	1.969	50			
53	Positive	39	2.021	0.569	51			
54	Positive	40	2.048	2.195	52			
55	Positive	41	1.371	1.401	53			
56	Positive	42	0.680	1.005	54			
57	Positive	43	1.856	2.218	55			
58	Positive	44	0.765	1.770	56			
59	Positive	45	0.283	0.112	57			
60	Negative		0.058	0.009				
61	Negative		0.858	0.187	58	5		13
62	Negative		0.091	0.172				
63	Negative		0.819	0.000	59	6		14
64	Positive	46	0.246	0.280	60			
65	Negative		0.024	0.000				
66	Negative		0.000	0.000				
67	Positive	47	0.826	0.000	61			
68	Positive	48	0.712	1.192	62			
69	Positive	49	0.724	1.280	63			
70	Negative		0.264	0.296	64		8	15
71	Positive	50	0.577	1.417	65			
72	Positive	51	0.325	1.060	66			
73	Negative		0.287	0.000	67	7		16
74	Positive	52	0.561	0.593	68			
75	Positive	53	0.723	1.106	69			

76	Positive	54	1.768	1.503	70				
77	Positive	55	0.273	0.389	71				
78	Negative		0.026	0.000					
79	Negative		0.012	0.121					
80	Negative		0.002	0.000					
81	Positive	56	3.067	1.919	72				
82	Positive	57	0.241	0.124	73				
83	Positive	58	0.931	1.926	74				
84	Negative		0.137	0.242	75		2		17
85	Positive	59	0.528	0.325	76				
86	Positive	60	0.304	0.439	77				
87	Positive	61	0.239	0.000	78				
88	Positive	62	0.243	0.000	79				
89	Positive	63	0.199	0.961	80				
90	Negative		0.000	0.046					
91	Positive	64	0.025	0.577	81				
92	Negative		0.395	0.000	82	8			18
93	Positive	65	0.671	0.219	83				
94	Negative		0.000	0.000					
95	Negative		0.000	0.049					
96	Positive	66	0.342	0.289	84				
97	Positive	67	1.992	1.484	85				
98	Negative		0.000	0.000					
99	Positive	68	2.215	0.761	86				
100	Positive	69	0.358	0.459	87				
101	Negative		0.000	0.087					
102	Negative		0.000	0.865	88		3		19
103	Positive	70	2.203	2.398	89				
104	Positive	71	2.506	1.823	90				
105	Positive	72	1.972	0.806	91				
106	Positive	73	1.213	0.000	92				
107	Negative		1.555	1.116	93			9	20
Total positive		73			93	8	3	9	20
Percent positive		68.2			86.9				

01 Positive results are shaded in grey

02

03

34 **Supplementary Table 2: Results of analysis of 75 sera from community based COVID-19 cases**
 35 **for antibodies to SARS-CoV-2 by the qualitative Roche Elecsys test and by the Virtus S1 IgM &**
 36 **IgG quantitative test.**

Sample number	Roche Elecsys test result		Virtus Test result		
		n= positive	IgM A450AU	IgG A450AU	Overall n= positive
1	Negative		0.300	0.000	1
4	Positive	1	0.806	1.486	2
5	Negative		0.233	0.000	3
6	Positive	2	0.272	1.371	4
7	Negative		0.000	0.002	
8	Positive	3	0.925	1.351	5
9	Positive	4	0.478	0.827	6
10	Positive	5	1.144	1.396	7
11	Positive	6	0.680	2.371	8
12	Positive	7	0.120	0.497	9
13	Positive	8	0.204	1.638	10
14	Positive	9	0.057	0.454	11
15	Positive	10	0.232	0.092	12
16	Positive	11	0.177	1.078	13
17	Positive	12	0.176	0.668	14
18	Negative		0.154	0.291	15
19	Positive	13	0.190	1.346	16
20	Positive	14	0.619	1.227	17
21	Negative		0.260	0.237	18
22	Negative		0.016	0.149	
23	Positive	15	0.220	0.552	19
24	Positive	16	0.958	2.247	20
25	Positive	17	0.768	1.388	21
26	Negative		0.221	0.190	22
27	Positive	18	0.192	1.065	23
28	Positive	19	0.123	0.490	24
29	Positive	20	0.278	0.000	25
30	Negative		0.304	0.400	26
31	Positive	21	0.412	1.481	27
32	Positive	22	0.206	0.120	28
33	Positive	23	0.446	0.278	29
34	Negative		0.252	0.949	30
35	Negative		0.146	0.000	31
36	Positive	24	0.383	0.487	32
37	Positive	25	0.706	0.000	33

38	Positive	26	0.321	0.355	34
39	Negative		0.194	0.595	35
40	Positive	27	0.716	0.909	36
41	Negative		1.205	0.794	37
42	Positive	28	0.909	1.318	38
43	Negative		0.583	0.269	39
44	Negative		1.166	0.217	40
45	Positive	29	1.308	1.779	41
46	Positive	30	1.343	2.212	42
47	Positive	31	1.751	1.812	43
48	Positive	32	0.800	0.897	44
49	Positive	33	0.000	0.649	45
50	Positive	34	0.564	0.469	46
51	Positive	35	0.205	1.623	47
52	Positive	36	1.857	1.969	48
53	Positive	37	2.021	0.569	49
54	Positive	38	2.048	2.195	50
55	Positive	39	1.371	1.401	51
56	Positive	40	0.680	1.005	52
57	Positive	41	1.856	2.218	53
58	Positive	42	0.765	1.770	54
59	Positive	43	0.283	0.112	55
60	Negative		0.058	0.009	
61	Negative		0.858	0.187	56
62	Negative		0.091	0.172	
63	Negative		0.819	0.000	57
64	Positive	44	0.246	0.280	58
65	Negative		0.024	0.000	
66	Negative		0.000	0.000	
67	Positive	45	0.826	0.000	59
68	Positive	46	0.712	1.192	60
69	Positive	47	0.724	1.280	61
70	Positive	48	0.264	0.296	62
101	Negative		0.000	0.087	
102	Negative		0.000	0.865	63
103	Positive	49	2.203	2.398	64
104	Positive	50	2.506	1.823	65
105	Positive	51	1.972	0.806	66
106	Negative		1.213	0.000	67
107	Positive	52	1.555	1.116	68
Total positive		52			68

Percent positive		69.3			90.7
------------------	--	------	--	--	------

37 Positive results are shaded in grey

38